

Quick

▶▶▶▶▶ installation guide

Wired 10/100Mbps Network Camera

HNC210



Website: www.hawkingtech.com
E-Mail: techsupport@hawkingtech.com

Copyright © 2005 Hawking Technologies, Inc. All rights reserved.

Table of Contents

Step 1: Check Contents & Installation Requirements	3
Step 2: Physical Description	5
Step 3: Hardware Installation	7
Step 4: Run the Quick Setup Wizard	9
Step 5: Viewing & Tips	24

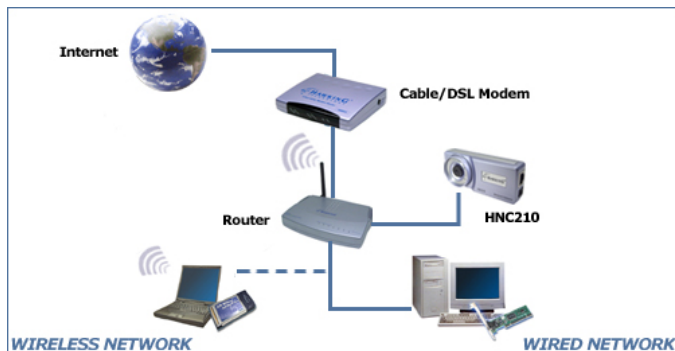
Step

1

Check Contents & Installation Requirements

Congratulations on the purchase of your new Hawking *Net-Vision*[™] HNC210 Wired 10/100Mbps Network Camera. The HNC210 is a high performance standalone camera system that provides an ideal solution for remote monitoring, surveillance, or sending live video over the Internet. The camera offers a broad array of applications and can be used to monitor various critical locations such as homes, offices, and other industrial and public areas. Please read this quick installation guide carefully before beginning your installation.

General Installation:



Step

1

Check Contents & Installation Requirements



HNC210 Wired Network Camera

This QIG Will Guide You Through
the Initial Setup of Your Product

What You Will Need To Get Started:

- Wired Router/Switch/Hub, or Wireless 802.11b/g Router with wired LAN ports
- One computer client, with CD-ROM drive, attached to your network
- Web Browser
- Operating System: Windows 98SE/ME/NT/2000/XP/Server 2003

Check Your Package Contents:



HNC210
Network Camera



Quick Installation
Guide



CD Containing:
Setup Wizard, Utilities



DC Power
Adapter



Camera Stand/
Mounting Kit

Step

2

Physical Description

Front Panel



LEDs

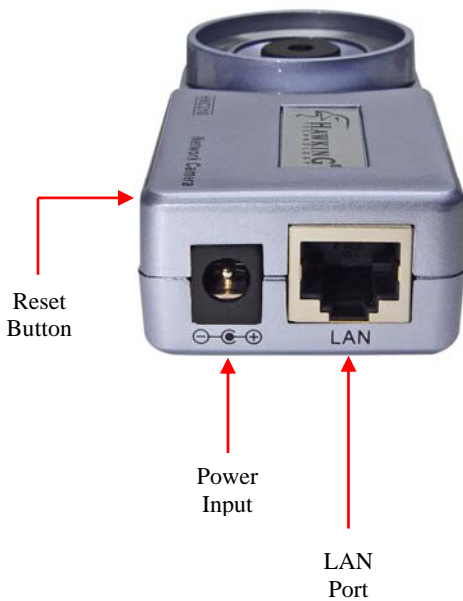
- Link/Activity: Green when monitoring; flashing for video transmission/reception
- Ready: Orange when device is powered on & ready for access

Step

2

Physical Description

Bottom Panel



Step

3

Hardware Installation

1 Locate the network cable connector (RJ-45 port) on the camera's bottom panel. Connect an Ethernet cable to the port. Connect the other end of the cable to the network.



Step

3

Hardware Installation

2 Locate the power input connector on the camera's bottom panel, and attach the external power supply. Then, plug the adapter into an available outlet. Please check to see that the orange "Ready" LED located next to the lens of the camera is lit to ensure that the camera is powered on. (To ensure that there is a network connection, please check to see that the green "Link/Activity" LED is lit or flashing.)



Step

4

Run the Quick Setup Wizard

1 Insert the Hawking *Net-Vision™* HNC210 Installation & Utilities CD into your CD-ROM Drive. When the main page loads, click on **Quick Setup Wizard**.



Step

4

Run the Quick Setup Wizard

HAWKING TECHNOLOGY

HNC210/HNC230G Wired/Wireless Network Cameras

Setup Wizard

2

MAC Address	Current IP Address	Model
00:11:5c:55:82:9a	192.168. 2. 3	HNC230G

Rescan camera

Next

2 The Setup Wizard will search for similar cameras available on your local area network. A “similar” camera will have the same code of four letters at the beginning of its serial number. This code is “HEMT” and can be found on either the right or left panel of the box, or on the label on the bottom of the camera.

Each available camera will be displayed in the camera list with its MAC address, current *default* IP address, and model number. (NOTE: The Setup Wizard may display an IP address for the camera that is already consistent with your network [LAN] settings, rather than the default one.) In the camera list, click on the camera you would like to configure so that it is highlighted blue, and then click **Next**. (If you are unsure about which camera you would like to configure, you can compare its MAC address displayed in the camera list to the one printed on the label on the underside of the camera.)

NOTE: If the camera list does not display any available cameras, you should:

- a. Click on the “Rescan Camera” button, and
- b. Make sure that all available similar network cameras are connected properly to the network.

If neither option above is successful, you can also perform a factory default reset by holding down the “Reset” button on the back panel of the camera for at least five seconds. Then, allow about 45 seconds to one minute for the camera to complete the reboot process. This should easily resolve the issue.

Step

4

Run the Quick Setup Wizard

3 Next, the login username and password screen will appear. Please type in the default login and password and then press “OK”. The **default values** are:

Login: admin

Password: 1234

If you have already set a username and password, enter them and press “OK”.



Step

4

Run the Quick Setup Wizard

4 The Setup Wizard will try to determine your network settings. If a DHCP server is present on your network, the Wizard will obtain your network settings and automatically configure your network camera to operate on your LAN by returning network settings that are consistent with your network.

If no DHCP server is present, the Wizard will poll your PC's internal network settings and suggest an appropriate static IP address in the "Manual IP" section to assign to the network camera. If you do not wish to use the suggested IP address, you may change your IP settings in the "Manual IP" section only.

NOTE: Typically, your Gateway address is the IP address of your network's router or Internet gateway. The Wizard will try and automatically fill in this address for you based on your PC's current settings.

Please click **Next** once your computer has found the appropriate IP settings.

NOTE: If you are unfamiliar with how to manually set an IP address, a detailed example is provided at the end of this section.

Step

4

Run the Quick Setup Wizard

HAWKING
TECHNOLOGY

HNC210/HNC230G Wired/Wireless Network Cameras

IP Settings

4

DHCP

IP	10	1	1	144
NetMask	255	255	255	0
Gateway	10	1	1	1
Dns				

MANUAL_IP

IP	10	1	1	144
NetMask	255	255	255	0
Gateway	10	1	1	1
Dns				

Back Next

Step

4

Run the Quick Setup Wizard

5 To protect your camera from unauthorized access and use, you will need to change the **Admin Password**, which is “1234” by default. The password can have a maximum of four characters. Confirm the new password by typing it again identically in the “Reconfirm” field.

Click **Next** once you have confirmed your new password.

HAWKING
TECHNOLOGY

HNC210/HNC230G Wired/Wireless Network Cameras

Password

If you wish to set an Admin's password to secure the camera, please do so here. If you do not wish to change the ID and Password, please click Finish to complete the setup

Admin ID

New Password

Reconfirm

5

Back Next

Step

4

Run the Quick Setup Wizard

6 The following status page will appear. It will display a summary of the changes you have made to the network camera's settings. If all the settings are correct, click **Next** to continue.

The screenshot shows the 'Summary / Status' page of the Hawking Technology Quick Setup Wizard. The page title is 'HNC210/HNC230G Wired/Wireless Network Cameras'. The page displays a summary of the configuration settings for the network camera. On the left, there are two circular images: the top one shows a camera with a red '6' and a red arrow pointing to it, and the bottom one shows a camera with a red arrow pointing to it. On the right, there are four input fields for configuration settings:

Admin ID	admin
Password	1234
IP Address	10.1.1.144
Subnet	255.255.255.0

At the bottom right, there are two buttons: 'Back' and 'Next'.

Step

4

Run the Quick Setup Wizard

7 The setup process has now been completed. Please briefly review the text on the page before clicking on **Reboot**. After clicking **Reboot**, the Setup Wizard will close. Please allow about 45 seconds to one minute for the camera to reboot. After the camera has finished rebooting, you can type in its new IP address in your web browser to begin accessing the camera.

The screenshot shows a web browser window with the title bar "HAWKING TECHNOLOGY". The main content area has a header "HNC210/HNC230G Wired/Wireless Network Cameras" and a sub-header "Setup Wizard". On the left, there are two circular images: the top one shows a silver HNC210 camera, and the bottom one shows a silver HNC230G camera. The main text area contains the following information:

HNC200 Series Network Camera Setup Wizard Version:

[How to View Your Camera via the Internet](#)

You Will need to click on Reboot in order for the new settings to take effect. After the Reboot process is completed, please return to the Setup Wizard to view the new IP address. If you wish to view your network camera outside your local area network(LAN) via the Internet, please refer to the section in the user's manual titled "How to View Your Camera via the internet" for detailed configuration instructions. Thank you for using the Setup Wizard. This computer program is protected by copyright law and international treaties. Unauthorized reproduction or distribution of this program, or any portion of it, may result in severe criminal and civil penalties, and will be prosecuted to the maximum extent possible under law.

At the bottom of the window, there is a navigation bar with a "Back" button (a yellow arrow pointing left) and a "Reboot" button (a grey button with a white border). A red arrow points from the "Back" button towards the "Reboot" button.

11

Example on How to Set the IP Address Manually

The example shown here illustrates how to manually set an IP address using the Windows XP operating system. However, the procedure is similar for all other versions of Windows.

When setting an IP address, you must make sure that the address you specify has the same first three octets (or segments) as the other devices on your LAN. In the figures on the previous pages, the camera has the following IP address: 10.1.1.144. The address is comprised of four segments separated by periods. Each segment is called an “octet”. All devices on your LAN must have the same first three octets, in this case “10.1.1”. Therefore, all devices on your LAN must have IP addresses of the form “10.1.1.x”, where “x” is a number between 0 and 254. When setting the IP address for the network camera, it is recommended (but not required) that you choose a number towards the end of the range between 0 and 254, excluding 254 itself. (Occasionally, the number 254 is used as the final segment for the *default* IP address of other devices.) Selecting a number towards the end of the range (preferably between 200 and 250) will help avoid conflicts with IP addresses that are already being used by other devices on the LAN.

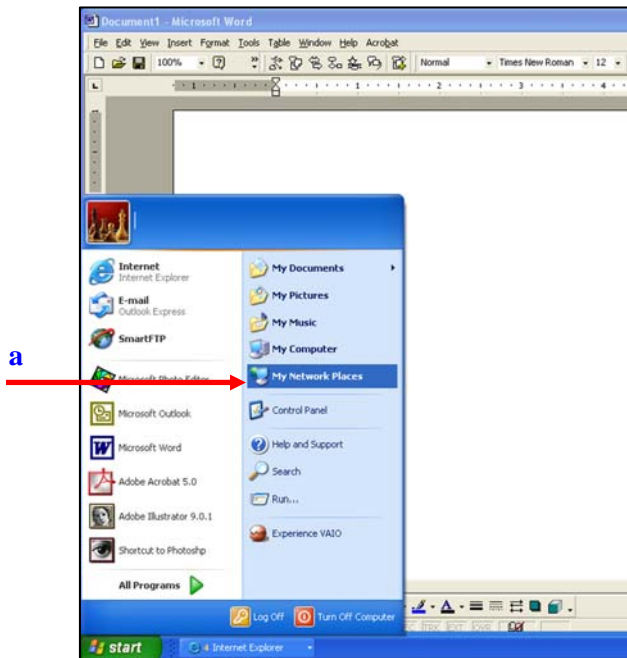
To determine the common octets/segments for your LAN settings, follow the steps outlined in the next two pages.

Step

4

Run the Quick Setup Wizard

- a. Click on **Start** in the bottom left corner of your screen. Then click on **My Network Places**.

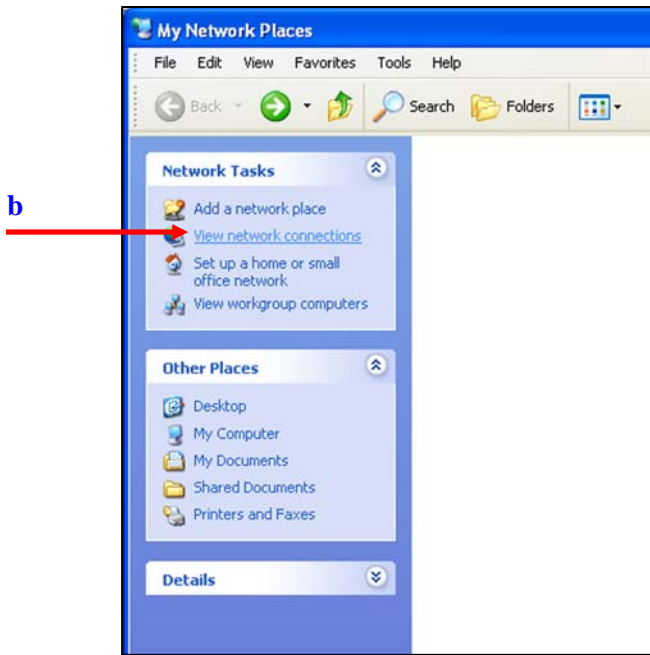


Step

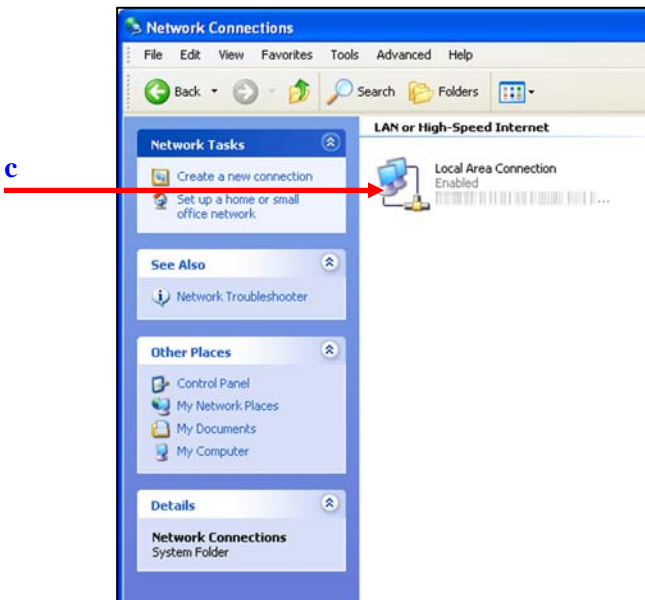
4

Run the Quick Setup Wizard

b. Click on **View Network Connections**.



c. In the **Network Connections** window, you should see an icon titled **Local Area Connection** (or something similar). You can access this icon in two ways: *a.* by clicking or double-clicking on it, or *b.* by right-clicking on it and then clicking on **Status** from the resulting menu.

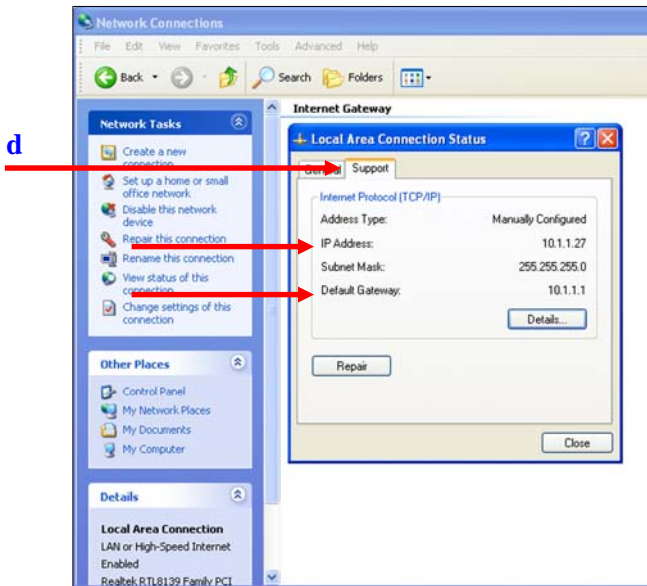


d. A window with the title **Local Area Connection Status** (or something similar) will appear. (See the figure on the following page.) Click on the **Support** tab. Under the heading **Address Type**, you will find an **IP Address** line and a **Default Gateway** line. These two lines will have IP addresses with the first three octets in common. Use this information to set the IP address for your network camera. You will use these same three octets as the first three octets for the IP address of your network camera. The final octet will be a number between 0 and 254.

Step

4

Run the Quick Setup Wizard



- You can access and view your network camera's images via a web browser by typing "http://**IPAddressofCamera**" in the address bar.
- You can also use the included software application to view, record, and playback the network camera's images.
- The example illustrated in the previous section "Step 4: Run the IP Setup Program" deals with setting up an IP address to view the network camera *within* your LAN. For an example of how to view your network camera outside of your existing LAN via the Internet, please refer to the section in the user's manual titled "**How to View Your Camera via the Internet**".
- If the image is blurry, this is most likely because the camera lens is out of focus. To focus the lens, gently rotate the lens in either direction until the desired level of focus is reached. **Please Note:** Do not aggressively turn or overturn the lens, as this could lead to an unscrewing or damaging of the lens.
- It is highly recommended that you install the network camera(s) before placing them in the desired physical location.