



▶ **Smart Wireless**

PCI Adapter 802.11b (95-20)

User Guide



Federal Communication Commission Interference Statement

This Equipment has been tested and found to comply with the limits for a class B digital device, pursuant to Part 15 of the FCC rules. These limits are designed to provide reasonable protection against harmful interference in a residential installation. This equipment generates, uses and can radiate radio frequency energy and, if not installed and used in accordance with the instructions, may cause harmful interference to radio communications. However, there is no guarantee that interference will not occur in a particular installation. If this equipment does cause harmful interference to radio or television reception, which can be determined by turning the equipment off and on, the user is encouraged to try to correct the interference by one or more of the following measures:

- Reorient or relocate the receiving antenna.
- Increase the separation between the equipment and receiver.
- Connect the equipment into an outlet on a circuit different from that to which the receiver is connected.
- Consult the dealer or an experienced radio/TV technician for help.

Warning:

You are cautioned that changes or modifications not expressly approved by the party responsible for compliance could void your authority to operate the equipment.

Contents

1	Introduction.....	1
1.1	Features	1
2	Package Contents.....	1
3	System Requirements	2
3.1	Hardware Requirements	2
3.2	Software Requirements	2
4	Software Setup.....	2
5	Hardware Setup	3
6	Inserting the Madge PCMCIA 802.11b Adapter.....	3
7	Specification	4
8	Troubleshooting.....	4

1 Introduction

The Madge PCI adapter (95-20) is a high-performance PCI-to-PC Card adapter, which supports one PC Card socket. It is compliant with the 16-bit PC Card specification defined in PCMCIA Release 2.1/JEIDA 4.1 and 32-bit CardBus; it can support any 8-bit/16-bit/32-bit PC Card in one socket, powered at 3.3V/5.0V as required.

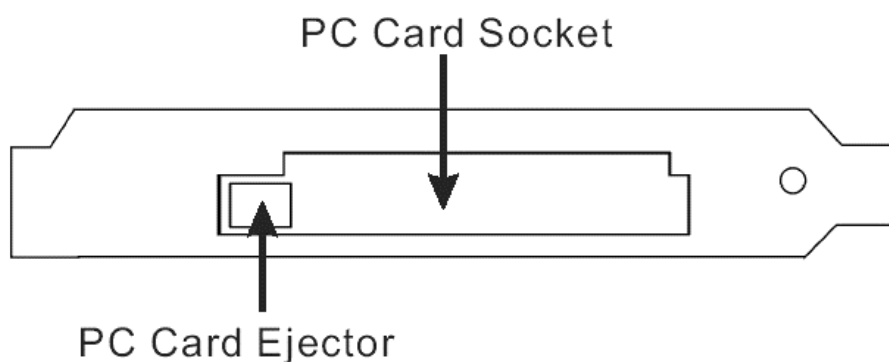
The PCI adapter provides a rich set of features, which make it a good choice for bridging between PCI and PC Card in desktop computers. Unique software configurable interrupt routing circuitry and necessary driver software are provided together for the PCI adapter to serve IO cards requiring “IRQ steering” functionality from the socket. These capabilities enable the PCI adapter to support almost all PC Card applications including: SRAM cards, Linear Flash cards, ATA cards, Modem cards and LAN cards.

The PCI adapter is an ideal partner for the Madge 802.11b PCMCIA wireless LAN adapter (95-31).

1.1 Features

- Supports 16-bit (PCMCIA 2.1/JEIDA 4.1) and 32-bit (CardBus) PC Card.
- One rear access PC Card socket.
- PCI Local Bus Specification Revision 2.1 compliant.
- PC Card Standard 95/97 compliant.
- 3.3V/5.0V operation.
- Intel 82365SL register compatible, ExCA compatible.
- Supports IRQ steering; software driver provided.
- Ideal for data transfer or backup between desktop PC and mobile computer.

The PCI adapter provides one rear PC Card socket that is capable of accepting Type I, Type II or Type III PC Cards.



2 Package Contents

The following items should be found in the package you have purchased:

- One Madge PCI adapter (95-20)
- A CD-ROM containing documentation and drivers

Please visit www.madge.com/software to check for the latest driver releases.

The CD-ROM also contains information on other Madge Smart Wireless products.

NOTE: Please contact your local dealer if anything is missing.

3 System Requirements

3.1 Hardware Requirements

- IBM PC Compatible Computer
- One free PCI Expansion Slot

3.2 Software Requirements

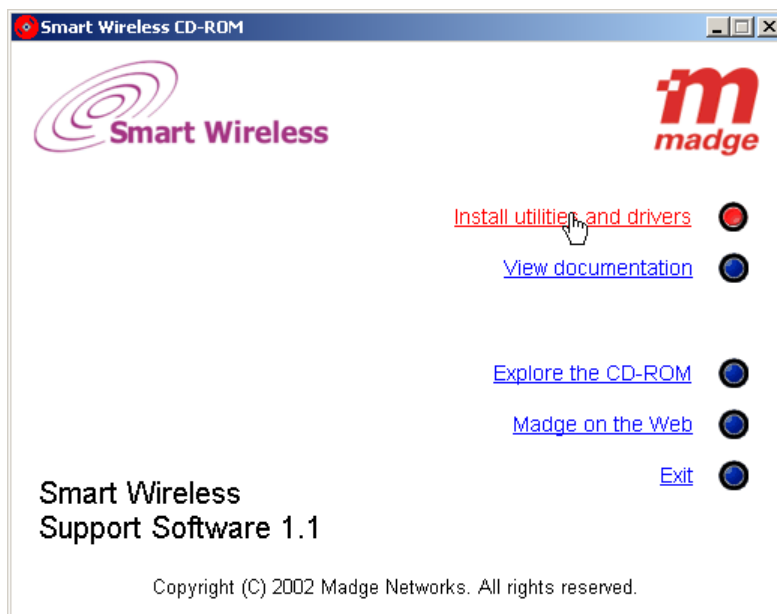
The PCI adapter is compatible with the following operating systems:

- Microsoft Windows 98
- Microsoft Windows 98SE
- Microsoft Windows Me
- Microsoft Windows 2000
- Microsoft Windows XP

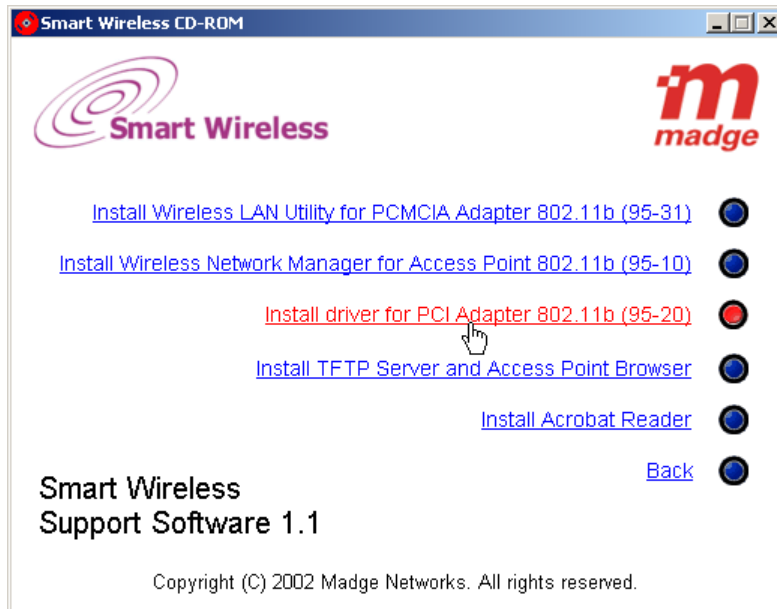
4 Software Setup

NOTE: If your system is Windows XP, you can skip this chapter.

1. Power on your computer with Windows 98/98SE/Me/2000.
2. Insert the accompanying CD-ROM into the CD-ROM drive of your computer.
3. A license agreement dialog box appears. If you agree, click **Accept** to continue.
4. The following dialog box appears for you to choose what to do:



5. Click **Install utilities and drivers**, the following dialog will appear:



6. Click the **Install driver for PCI Adapter 802.11b (95-20)** link to run the setup program. Now go to Step 9.
7. If the AutoPlay capability of the CD-ROM drive is disabled, click the **Start** button on the taskbar, click **Run**, and then the **Run** dialog box appears.
8. In the **Open** text box, type in **D:\Setup.exe** (where D: is the CD-ROM drive letter) to run the above setup program. Now go to step 5.
9. The welcome dialog box appears. Click **Next** to continue.
10. The **Software License Agreement** dialog box appears. Read through the Software License Agreement, and then click **Yes**.
11. The setup program will automatically identify the running system, install corresponding software, and configure your system for the PCI adapter.
12. Following the completion of software driver setup, the **Setup Complete** dialog box appears.
13. Click **Finish** to complete the software setup.

5 Hardware Setup

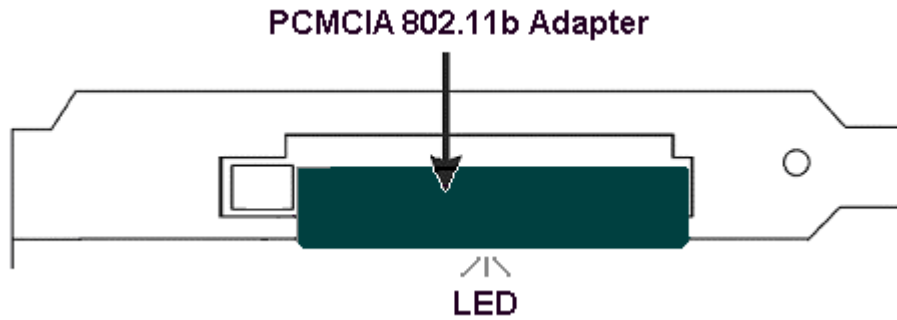
After software setup, follow the steps below to install your PCI adapter hardware.

1. Before installing your PCI adapter, power off your computer and remove the power plug from the wall outlet.
2. Remove the cover of your computer. For instructions on removing the cover, refer to the manual provided the vendor of your computer.
3. Install the PCI adapter into a free PCI slot and utilize the mounting screw to secure the PCI adapter in place.
4. Re-place and secure the cover of your computer.
5. Re-connect the power plug back to the wall outlet and power on your computer.

6 Inserting the Madge PCMCIA 802.11b Adapter

It is important to insert any PC Card correctly into the PCI adapter. Do not use excessive force. The PCI adapter is supplied with warning labels to show the correct insertion of a Madge PCMCIA 802.11b

wireless LAN adapter. The front of the PCMCIA adapter (which has the LED and “Smart Wireless” label on it) must be inserted such that it is next to the PCI adapter’s circuit board as follows:



7 Specification

- PCI Local Bus Specification Revision 2.1 compliant.
- PCMCIA 2.1, JEIDA 4.1, and CardBus compliant.
- 3.3V/5.0V operation.
- Intel 82365SL register compatible, ExCA compatible.
- ATA disk interface support.
- Supports Hot-Swapping—inserting and removing a PC Card without shutting down system.
- Power saving suspend mode support.
- Ambient temperature under bias 0°C to 70°C.
- Storage temperature -65°C to 150°C.
- PCI-to-PCMCIA host bridge R5C475 II.
- Max. Power Supply on sockets VCC at 3.3V for 1A and VCC at 5.0V for 1A.

8 Troubleshooting

If your computer is COMPAQ DeskPro EN series, you may encounter the following problem:

- System freezes while booting up after installing PCI adapter in the computer.

Solution:

- Before installing the PCI adapter, please go to <http://www.compaq.com/>
- Download the latest version of ROMPaq ROM Image (V2.11 or later), then follow the instructions COMPAQ provides to update the system BIOS. You can install the software and hardware of PCI adapter without problems after a BIOS update.

NOTE: only gentle effort is required to insert a PC card into the PCI adapter. If you have a problem inserting a PC Card into the socket, please do not force the card, because it may cause unexpected damage to the PC card or PCI adapter.

If you have any further questions, please contact your local dealer.