

# **XO**VISION

## **SHINER**

### User Manual



#### **Models**

**X140VIDB**

**X140VIDW**

**X140VIDP**

**Designed in the USA**

## Helpful Tips Before you Get Started:

### Conversion Disc (Included)

1. Insert the CD into the computer and then double click the disc icon
2. To install the Conversion Program (which will allow you to convert the below file types), please open the folder titled: "AMV Driver 4.18"
3. Double Click the file titled: "Setup.exe" and follow the instructions

Note: If you have Windows 98, please install the Win98 driver before you install the AMV Driver 4.18.

To charge your device, plug the USB cable into your computer and the other end of it into the player's USB Port. Make sure that your computer does not go into sleep mode. This device will not charge if your computer is in sleep mode. And do keep your player SWITCH ON when charging, if SWITCH OFF, it may cost you 8-9 hours to full fill it.

### Putting Songs/movies on the player:

1. Drag supported music/movie files from your hard drive onto the player's disc icon
2. You can also create folders within the player. Double click on the icon to open the player's folder. Then, right click and select "New" and click on "Folder".
3. You can then drag songs onto that folder and they will appear in the folder on your player
4. This player supports AMV Video formats. For all other Video Formats, please use the AMV Driver 4.18 to convert them to AMV and then drag into this player. This player also plays MP3 and WMA formats directly without conversion. It does not play

Protected WMA formats - please download music in MP3 format.

Available files which can be converted into AMV format:

- 1) AVI format files whose extended name as AVI;
- 2) Windows Media format files whose extended name as ASF.

WMV:

- 3) MPEG1 format files whose extended name as MPG, MPEG, DAT;
- 4) QuickTime format files whose extended name as MOV;
- 5) MPEG 2 format files whose extended name as VOB ;
- 6) Flash format files whose extended name as SWF;

Files which are already in AMV format do not need to be converted but can be dragged directly onto the player.

This player does not support or convert Mpeg4 formats. You may download/purchase a program to convert Mpeg4 to AMV. Please make sure that you use legal software and bear sole responsibility for it.

### NOTICE:

This player can also serve as a flash drive and store media, documents, etc. Please switch off your player when no need to use it to save power.

## User's manual

### FULL COLOR DISPLAY

This machine is a new MP3 video player, which support MP1, MP2, MP3, AVI, AMV, WMA, WAV formats (some will need to be converted via the conversion CD). It has perfect sound, and smart features, which make it be a perfect piece. We hope that you will enjoy your XO Vision MP3 Video Player.

### Introduction

Smart feature design

- Smart feature, small and compact

Support various voice frequency formats

MP1, MP2, MP3, WMA, WAV

### Firmware Upgrade

This device already contains the most updated firmware available. Please do not upgrade the firmware as this can damage the unit (not covered under the warranty) and is not necessary.

### FM radio

The powerful researching function can help you enjoy at most 40 different programs.

### Address book function

Convenient for taking your address information

### E-book

The word-noting function can help you copy the text into the disc and read it whenever you want

### USB disc (driver free) function

You can operate directly on the PC without installing the driver (WIN2000 or more advanced systems no driver needed)

### "Different space" mode

You can divide the disc into two parts and encode one of them with the tool in the machine, so as to avoid the personal things being disclosed.

### Replay

You can record voice with its built-in microphone and store it in certain format (WMA and ACT), moreover, you can set the section to be repeated.

### 7 EQ modes

Normal, rock, pop, classic, soft, jazz, DBB

### Playing modes

Normal, repeat, repeat folder, repeat all, random playing, skimming

### Power off time set

You can enjoy the two convenient modes: sleeping mode and power saving mode

### All flash menu

Stereo flash menu and relevant word display gives you perfect enjoyment.

### Data Storage

You can use this device as you would any flash drive. Simply drag your files onto the MP3 Video Player folder (on your computer). This allows you to store data and have it wherever you go.

### Acclamation

First, thank you for using our product.  
Before you operate the machine, please read the manual carefully.

Notice: the information of this manual is depending on the present edition of the product, and we have no responsibility to inform you the future improvement of the product.

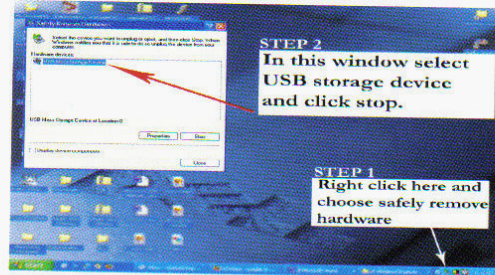
#### Getting Started

1. To charge device you must plug one end of the supplied USB cable into your computer and the other end into the Players USB port (located on the side of the unit). Let charge for 2-4 hrs.
2. Install Supplied Driver CD onto your computer
3. Once device is charged you may convert songs/movies/pics using the driver software that you have installed.

3

- a. Once songs/movies/pics have been converted and placed on the player you may eject player hard drive icon and unplug.

**VERY IMPORTANT:** Before unplugging player you must eject players' hard drive icon by right clicking on icon and pressing eject, or by choosing the "safely remove hardware" option from the bottom right icon bar located by your clock...



4. Plug the device into your car stereo or home theatre system using the ZpodLink cable (Sold Separately).

5. Device has a built-in Speaker

4

### Catalog

• Introduction .....	2
• acclamation .....	2
• about the player .....	7
feature and keys .....	7
screen .....	7
battery .....	7
basically function .....	7
enter the menu .....	7
skimming operation .....	7
enter different modes .....	7
volume adjusting .....	8
power on / off .....	8
play / pause .....	8
recording / stop .....	8
key operation .....	8
definition of the key function .....	8
definition of the key operating .....	8
music playing .....	8
simple operation .....	8
EQ mode .....	8
Lyric display (KALA OK function) .....	8
how to display song word .....	9
voice recording .....	9
recording in time .....	9
record in the voice recording mode .....	9
choose recording type .....	9
sound control recording .....	10
play recording text .....	11
transfer WAV into ACT .....	11
transfer ACT into WAV .....	11
use FM radio .....	11
Photo skimming .....	12
system setting .....	12
how to enter? .....	12

5

Introduction of appendix .....	13
"recording time" set .....	13
"language choosing" set .....	14
"power off" setting .....	14
"repeat" setting .....	15
"contrasting" setting .....	15
"connecting" mode .....	16
"storage condition" setting .....	17
"Firmware edition" setting .....	17
"Firmware upgrading" setting .....	17
e-book function .....	18
e-book choosing .....	18
use USB disc .....	19
use USB disc .....	20
build new files .....	20
upgrade the Firmware .....	21
choose different catalogs .....	21
canceled mode .....	22
playing mode .....	22
playing speed .....	23
replay mode .....	23
A-B replay .....	24
follow reading function .....	25
contrasting function .....	27
replay times .....	28
replay interval .....	29
how to learn language by the replay function .....	29
acknowledgment .....	29
different space function .....	30
breakdown .....	30
Spec .....	31

Know about the player

Feature and keys

6





#### Screen



**Important:** when playing a music file, the outside speaker will start working. When its power is 3.6V-3.7V (above 3.7V is normal), the playing system will turn off the outside speaker automatically, and will give out the following notice:



Click MODE to go back to the music playing interface, then plug in the earphone to let the player go on playing music, or the player will announce you again:

7



Avoid using or charging the player in extreme hot or cold.



**!!!!!!!!!!!!SAFELY EJECT PLAYERS HARD DRIVE ICON FROM COMPUTER BEFORE DISCONNECTING TO AVOID DAMAGE TO THE UNIT!!!!!!!!!!!!**



Please turn off the player when not in use

#### Basic function

##### Enter the menu

You can enter the menu by clicking "mode". The menu can be divided into main menu, playing song menu (shortly press to enter) and stopping song menu (shortly press to enter).

##### Skimming operation

Choose skimming menu

Go forward or upward when playing

##### Enter different modes

You can enter different functions from the main menu

Main menu: (long time press "mode" to enter it)

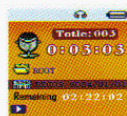
8



#### Music mode



#### Recording mode

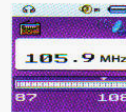


#### Voice playing mode

9



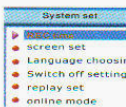
#### FM mode



#### Photos skimming



#### System setting



#### E-book

10



USB connecting

#### Volume adjusting

Shortly press "VOL-"; to decrease the volume  
Shortly press "VOL+"; to increase the volume

#### Power on / off

Long time press "play" at the stopping condition to power on  
Long time press "play" at the playing condition to power off

#### Play / stop (It can pause when recording), recede from the son menu

Under music mode, shortly press "play" to play music.  
Under playing mode, shortly press "play" to pause playing; long time press to stop

#### Start recording (shortly press) / stop recording (long time press)

Under the recording condition, shortly press "play" to stop recording

11

## Key operation

### Definition of the key function

1. Power on / play/ pause/ stop, which is called "PLAY" at the following
2. Press "mode" to enter the main menu or the Prev level menu
3. "VOL+, VOL-": Increase or decrease volume.
4. "Next": the next item
5. "Pre": the previous item
6. "REC": enter the recording interface
7. "EQ": enter the EQ choosing interface
8. "USB": USB plug
9. "Earphone hole": standard hole

### Definition of the key operation action

The key operation contains shortly press, long press, press and hold and single press. The following are all shortly press, except for specially noted.

Shortly press: press the keyboard once, and it will be effective immediately.

Long press: press and hold for 1-2 seconds, and can be used only once.

Single press: press the key, and it will be effective soon.

Press and hold: during the time you press and hold the key, it will work all the time. E.g.: "quick forward" and "quick back".

## 4. Music playing

1. Insert the earphone into the hole
2. Long timely press "play" to power on, enter "music mode", and then shortly press "play" to play music.
3. Choosing music:  
"Prev": choose the previous item of music  
"Next": choose the next item of music

Volume control: shortly press "VOL-"; to decrease volume; shortly press "VOL+" to increase volume.

### EQ mode

1. Music is being played

12



2. Shortly press "mode" to enter playing son menu.
3. Press "next" to choose "EQ mode"
4. Shortly press "mode" to enter "EQ"



### EQ choosing:

5. Various EQ modes:

Natural
Rock
Pop
Classical
Soft
Jazz
DBB

6. Press "next" to select; shortly press "mode" to confirm.

You also can shortly press "EQ" in the music-playing mode to enter the EQ set interface.

### Lyric display

The player support "\*LRC" text, which can help achieving the function  
How to use "\*LRC" text"

Keep the Lyric name consistent with the music.

13

E.g.:

Name of the music: 阿杜-黑夜.mp3

Name of the Lyric: 阿杜-黑夜.lrc

How to know whether there is lyric display

If the present song has Lyric display, the music mode "LRC" will become "LRC".



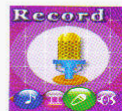
1. Check whether it has Lyric display
2. Long timely press "mode" to enter the condition
3. Lyrics displays
4. Shortly press "mode" to go back to music mode

### Voice recording

Please make sure the power is enough when recording  
The machine support storing 99 texts under each catalog

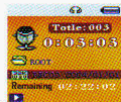
Record in the "voice recording" mode

1. Enter the main menu:



2. Press "next" to choose "voice recording" mode
3. Shortly press "mode" to enter the voice-recording mode. See the

14



following picture:

4. Shortly press "play" to start recording
5. Other operations are the same as "hot recording", you just need to s "play".

The recorded voice is stored in the present catalog in "stopping song menu / main menu".

If the screen displays "no space", it means there is no place for storing recording text, and you should delete some text to release space.

If the screens displays "catalog is full", it means there is already 99 recording texts, please change a new one.

Only the key "mode" is effective when recording.

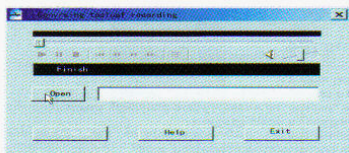
Select recording type

1. Under voice recording condition
2. Shortly press "mode" to enter recording song menu
3. Turn "next" to choose "REC type" song menu; shortly press "mode" to enter this item:

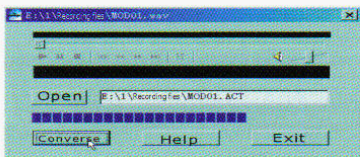
Fine REC	WAV format, good sound quality
Long REC	ACT format, ordinary sound quality
Fine VOR	WAV format, (sound control recording, and it will pause when no sound)
Long VOR	ACT format, (sound control recording, and it will pause when no sound)

4. Shortly press "next" to choose appropriate recording type, and then shortly press "mode" to confirm it.

15



3. Click "transfer" to start transferring it into WAV text



Besides the function of converting ACT format into WAV format, the machine can also play text of WAV and MP3 format.

#### Use FM radio

The mode you first enter is "playing" mode, then you need recover the program that stored previously, and the frequency is the minimum value.

About its interface

17

5. Press "play" to start recording

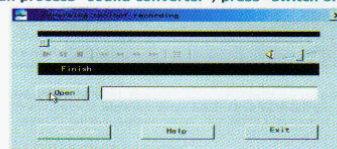
#### Play recording file

1. Enter the main menu
2. Turn "next" to choose "voice playing" mode
3. Shortly press "mode" to enter "voice playing" interface
4. Press "play" again to start playing
5. Choose recording text
  - "Pre": choose the previous recording text
  - "Next": choose the next recording text
6. Volume control: shortly press "VOL-" to decrease volume  
Shortly press "VOL+" to increase volume

#### Transfer ACT recording text into WAV text

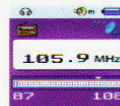
The text in ACT format can be transferred in WAV format by the process built in the machine.

1. Run process "sound converter", press "switch on"



2. Choose the ACT text need to be transferred

16



- The frequency value changes according to the marks position changing
- frequency showing mark
- Present program, at most 20
- 105.9 MHz, Present frequency

#### Research and listen the FM program

1. Enter the main menu
2. Mode "next" to choose FM mode
3. Shortly press "mode" to enter FM mode
4. Automatically researching
  - Press "Pre" / "next" for two seconds, the player searching forward or downward in 100KHz, and stops at the station searched; if you want to stop researching, you can turn "Pre" / "next".
5. Micro adjustment
  - Press "Pre": turn a single step (100KHz) backward
  - Press "next": turn a single step (100KHz) forward
6. Store the stations searched
  - Shortly press "mode" to enter song menu



18



Shortly press "mode" again to store it

7. Choose the stored station to listen

If there is at least 1 station stored, you can shortly press "play" to listen it in sequence

You can save the program you like, and

8. Inside recording function click "mode" to operate it.

Control: shortly press "VOL-" to decrease volume

Shortly press "VOL+" to increase volume

↓: "Normal frequency" and "Japanese frequency" can store at most 20 stations each.

#### ● JPEG skimming

You can use photo skimming

File selecting condition

When enter it from the main menu, it will be:



JPEG interface -file selecting-selecting file  
It will be blank when no file

press "play" to enter JPEG skimming condition

Press "Next/Last" to choose the next of previous item

Press "mode" to enter "stopping so menu": 1. catalog choosing, 2, playing set. 3 file deleting. 4 Exit

Playing condition: 1. Manual ; 2 auto

Auto turning time is 1-10 seconds

Photo skimming

19

the interface is :



Press :next / Last to choose

Press "play" to go back

Press "Mode" to turn back to the main menu

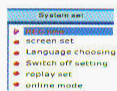
#### System setting

How to enter it

1. Enter the main menu

2. Turn "next" to choose "system setting"

3. Shortly press "mode" to enter "system setting"



Introduction of each item of appendix

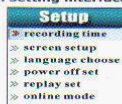
Recording time	Set the recorded date and time when the recording text recorded
Language choose	Set different languages
Power off set	Set a time of counting back, and once reached the time it will power off automatically
Replay set	Set the working condition of recording process
Contrast	Set the contrasting rate of the screen
Online mode	The item of "different space" function
Memory info	Check the storage space
Firmware version	Display the player's Firmware edition
Firmware upgrade	Specially for Firmware upgrading
Exit	Exit the present interface

20

#### Detailed operation instruction

##### "Recording time" setting

1. System setting interface



2. Shortly press "mode" to enter recording interface  
Recording time:



3. Shortly press "play" to set the time from "year", when you start setting, the "year" will start flashing.

4. Press "next" to increase the figure ("Prev" is by the contrary)

5. Press "mode" to exit

##### "Language choose" setting

Operation method refers to "EQ mode" setting.

##### "Power off" setting

The operation method refers to "EQ" mode.

"Power saving" mode: you set a time (unit: second), at the stopping condition, once it reaches the time, it will power off automatically. "0" means the function stopped.

"Sleeping mode": you set a time (unit: second), once it reaches the time, it will power off automatically no matter what condition it at, and this function is specially for sleeping. Notice: the sleeping mode can

21

only be effective for one time, and it will clean out the time set before after power off. If you need it, you should set again.

##### "Replay setting"

Operation method is refers to "EQ" setting

"manual" mode: it can't divide the sentence automatically but by hands when repeating.

"Auto mode": it automatically divides the sentence when repeating (specially for English reading when music is not on).

##### "Contrast"

Operation method refers to "back light time" setting

##### "online mode"

operation method refers to "EQ mode" setting.

Some operating system (before Windows 2K AP4) can't support one USB disc has two disc marks, so after it used "different space" function, you need to choose which disc you presently want (single normal disc or single encoded disc), so as to be displayed after connected to the computer.

##### "Memory info"

The figure presents the total volume of the disc, the percentage present the percentage between used space and total space.

##### "Firmware edition"

You can find out the present edition of the player

##### "Firmware upgrade"

Used for the upgrading Firmware



Skill notice: after set the item by press "mode", you can press the key "play" to exit. It is effective to all menus when pressing "play".

#### E-BOOK

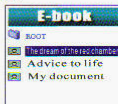
enter the main menu , press "NEXT", and press "mode" to enter the next

22



- catalog choosing: choosing the root catalog  
Press mode to enter the "catalog choosing" interface, press "NEXT/PRE" to turn page, and shortly press "mode" to confirm

- "choosing file": by "NEXT/PRE"



- Choose file name and press "mode"

- press "next" to choose "text reading" press "mode" to confirm, then you can choose your text

Press "NEXT/PRE" to turn page



#### USB disk using

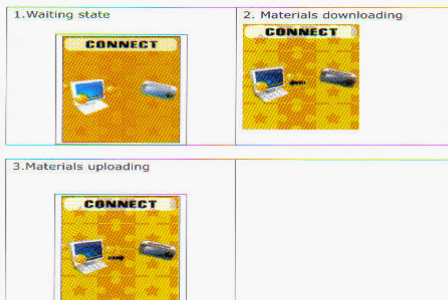
The player is the standard USB disk function that supports Windows 98 (Need install the drive procedure), above Windows 2K (Needn't install the drive procedure) system, Mac OS 10.3 or above, Linux Redhat 8.0 or above

The player supports the USB to supply power that can play when there is battery. Press MODE to exit the main menu in the state of waiting and choose the working mode to enter

The player supports the Suspend model

The player has three showing modes after connecting PC:

23

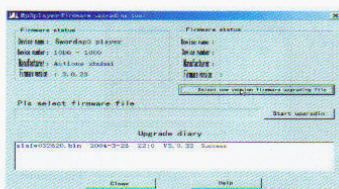


#### Player upgrading

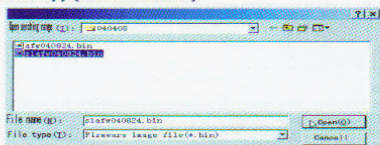
The player can upgrade and maintain system Firmware by using the installing tools

1. Main menu entering
2. Press NEXT to choose "System setting"
3. Press MODE to enter "System setting"
4. Press NEXT to choose "Firmware upgrading" to press MODE to enter
5. Connect the player to PC
6. Run the upgrading tool "MP3 Player Update" of PC and click "Choosing new edition files" button

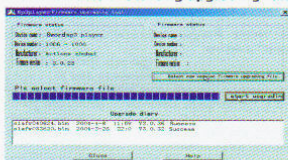
24



7. Choose the new Firmware procedure (It can be found in the disk and uploaded and downloaded form the website of factory) (Not Available)



8. Click the button "Starting upgrading" and begin the upgrading work



9. The player will show the indication after finishing upgrading

25



- ! Firmware upgrading can improve and refine the function of player. It will not affect the normal running of player if you don't use the Firmware upgrading

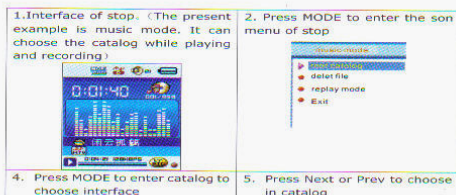
- ! Firmware upgrading may lead to the wrong operation so that the player can't work normally! Please read the instruction carefully. The operation fits for the person who has certain computer knowledge

- ! The Firmware upgrading software isn't fit for other serial players. The opposite is the same

#### Other settings

##### Different catalogs choosing (Stop son menu)

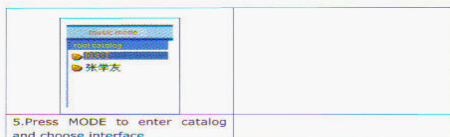
Users can put the different files into different catalogs (The catalog should be made in advance) so that play and manage the files selectively. The player supports the recognition of 9 one-level son catalogs



4. Press MODE to enter catalog to choose interface
5. Press Next or Prev to choose in catalog

26





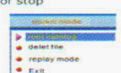
5. Press MODE to enter catalog and choose interface

**Notice:** Music mode, recording mode and playing mode can set the corresponding catalog that can correspond the different catalog Files deleting (Son menu of stop)

1. Interface of stop. (There is no interface in FM)

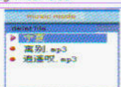


2. Press MODE to enter the son menu of stop



3. Press NEXT or PREV to choose 'single file' or 'All files' in the menu

4. Press MODE to enter the deleting interface



5. Press NEXT to change 'NO' into 'YES'

6. Press MODE to confirm and delete

27

#### ● Playing speed (Son menu playing)

You can choose different playing speed (like the fast and slow) while playing music (It takes effect for MP3), but the sound will not be changed

1. Music playing

2. Press MODE to enter the son menu playing

3. Pluck NEXT to choose the option "Playing speed"

4. Press MODE to enter the "Playing speed" to choose menu

5. Pluck NEXT to fasten playing, and pluck Prev to slow playing

Notice: It will point to every song after changing the speed until setting next time

#### ● Replay mode (Son menu playing)

■ Enter by playing son menu

##### A-B replay

1. Music playing or recording

2. Press MODE to enter the son menu playing

3. Press NEXT to choose the option of "Replay mode"

4. Press MODE to choose "Replay mode"

Replay mode: "A" is shining in the mark of replay until the starting "A"

5. Press NEXT to confirm the starting "A"

"B" is shining in the mark until confirming the starting "B"

6. Press NEXT to confirm the starting B

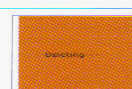
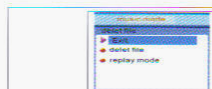
The mark of replay has fixed. Start repeating between A-B until arrives the setting time You can press VOL+ or VOL- to set the "Playing speed" under the replay mode

○ Follow reading function (There is not the function of the playing mode)

You can press to exit the repeating mode. Press Prev to restart A in the mode (The playing times should refer to the "Replay times")

○ Follow reading function (There is not the function of the playing mode)

29



"Delete all" will delete all the corresponding files in the present mode of present catalog (Such as deleting all files in the music mode. The recording files will not be deleted but the music files) The deleting interface of FM will be simpler which will come out the third step. It will delete the formal saving radio station



While deleting the files, please make sure bounce up the player and pull the USB cable out, or it will come out the phenomenon that the file can't be deleted

#### Playing mode (Son menu playing)

You can choose different playing mode while playing music or music files (Such as repeating and cycling)

The first item is "Playing mode" in the son menu playing. The player will play according to the setting regulation when you choose and confirm

##### ○ REPEAT

(Normal)	Continue to play the next song while finishing the present son until all files stop.
(Repeat One)	Repeat one music
(Folder)	Play all music of the file
(Repeat Folder)	Play and repeat all songs of the file
(Repeat All)	Play and repeat all the music

##### ○ SHUFFLE

(Random)	Play the music of present file randomly
----------	---

##### ○ INTRO

(Intro)	Play all the songs' 10 seconds of the present files by sequence.
---------	--

28



Press Prev to recede the state of "A-B replay in this state"

#### ○ Contrast function (There is not such function in the playing mode)

1. The mark of replay will change into " " after entering the contrast function when it plays the original sound. 2. The mark will change into " " after the original sound has finished when it plays the follow sound of users'.



Press Prev to recede the state of "Follow reading function" in this state

Press MODE to exit the replay mode in the above three states

#### ● Replay times (Son menu playing)

The operation method refers to "Backlight time" setting

The replay times decide how long A-B replay will exit

#### ● Replay interval (Son menu playing)

30

- Key points recommending



From now on, the thplayer supply the function "Outer space" which can settle the problem out.

Users can divide the USB disk into two part at any proportion by the thplayer. For example, you can supply two disk marks in the computer. Windows 2K needs to install SP4 or they can only see one disk mark. If you want to see the other disk mark, you should choose "Single disk" or "single coded disk" under "System setting/Connection mode". Coding one of the two (You can not code but using the two disks). Hiding the content. Others can't see the data that is the best "Outer space" function.

- 

31

The screenshot shows the 'Format' tab in the Windows NT Setup program. The 'Disk layout' section shows 'Disk 0' selected with 'NTFS' file system and '32 MB' allocation. The 'Set username or password' section shows the 'Set password' option selected. The 'Old user's name' field is empty, and the 'New password' field contains '1234'.

- 
- Format: [Partition and format disks]
- Partition:
- Partition 0: 27.1 MB
  - Partition 1: 27.1 MB
- Format and partition settings completed
- Format
- Cancel
- OK


- 32

Format and FSQ

File Name Size Type

Disk (C:) computer	24.8 KB	Disk (C:) computer
Disk (C:) (A:)	24.8 KB	Disk (C:) (A:)
Disk (C:) (B:)	24.8 KB	Disk (C:) (B:)
Disk (C:) (D:)	24.8 KB	Disk (C:) (D:)
Disk (C:) (E:)	24.8 KB	Disk (C:) (E:)
Disk (C:) (F:)	24.8 KB	Disk (C:) (F:)
Disk (C:) (G:)	24.8 KB	Disk (C:) (G:)
Disk (C:) (H:)	24.8 KB	Disk (C:) (H:)

Unallocated disk space: 24.8 KB

- 

-  **Warning:** please don't lose the name of uses' and code which you input, or you can't use the coded disk and delete the coded disk by combining the disk so that it will destroy the coded disk file

## 33

No supply power	Check whether the battery installing well or not Make sure whether it plays or not
No sound in the earphone	Make sure the volume is not under 0 and the earphone is connected Make sure to clean the earphone The destroyed MP3 can cause different noise so it will stop playing the music. Please make sure you have the complete files
There unusual state in the screen	Make sure that you choose the right language
Can't download the music normally	Check whether the USB connection is right or not Whether the drive procedure installing is right or not Check whether there is space or not

Size		
Weight	70g	
Screen	Full color display, 1.8 inch screen	
Computer connection	High-speed USB 1.1 (FS) Flash disk	
Build-in memory	128MB, 256MB, 512MB, 1GB,2GB	
Supply power	The longest playing time is 10 hours	
REC	Sample ratio	8KHz
	Recording format	WAV (32K bps) ; ACT (8K bps)
	Recording time	35hours (ACT, 128M Flash)
	The biggest outputting ratio	(L) 10mW+ (R) 10mW (32Ohm)
MP3, WMA, WMV, ASF	MP3 bit rate	8K bps ~ 320K bps
	WMA, WMV, ASF bit rate	5K bps ~ 384K bps
	Frequency corresponding	20Hz ~ 20KHz
	SNR	85dB
	Lack fidelity	<+ 0.05
FM radio	Frequency	76 MHz-90MHz/87MHz-108MHz

34

	Radio stations	20+20
	The biggest output rate of earphone	(L) 10mW +(R) 10mW (320)
	SNR	45dB
Music format	<b>M P 1. M P 2. M P 3. W M A. W A V</b>	
Temperature	-5 to 40 degree centigrade	
Multi languages	Traditional Chinese, English, simple Chinese, German, French, Italian and Spanish etc	
Operation system	Windows98/SE/ME/2K/XP, Mac OS 10, Linux 2.4.2	

Notice: specification changes without prior notice