



# **COMSPHERE 6700 SERIES NETWORK MANAGEMENT SYSTEM MULTIUSER FEATURE**

## **USER'S GUIDE**

Document No. 6700-A2-GB21-20

February 1998

---

**Copyright © 1998 Paradyne Corporation.**  
**All rights reserved.**  
**Printed in U.S.A.**

## **Notice**

This publication is protected by federal copyright law. No part of this publication may be copied or distributed, transmitted, transcribed, stored in a retrieval system, or translated into any human or computer language in any form or by any means, electronic, mechanical, magnetic, manual or otherwise, or disclosed to third parties without the express written permission of Paradyne Corporation, 8545 126th Ave. N., Largo, FL 33773.

Paradyne Corporation makes no representation or warranties with respect to the contents hereof and specifically disclaims any implied warranties of merchantability or fitness for a particular purpose. Further, Paradyne Corporation reserves the right to revise this publication and to make changes from time to time in the contents hereof without obligation of Paradyne Corporation to notify any person of such revision or changes.

Changes and enhancements to the product and to the information herein will be documented and issued as a new release to this manual.

## **Warranty, Sales, and Service Information**

Contact your local sales representative, service representative, or distributor directly for any help needed. For additional information concerning warranty, sales, service, repair, installation, documentation, training, distributor locations, or Paradyne worldwide office locations, use one of the following methods:

- **Via the Internet:** Visit the Paradyne World Wide Web site at <http://www.paradyne.com>
- **Via Telephone:** Call our automated call system to receive current information via fax or to speak with a company representative.
  - Within the U.S.A., call 1-800-870-2221
  - Outside the U.S.A., call 1-727-530-2340

## **Trademarks**

All products and services mentioned herein are the trademarks, service marks, registered trademarks or registered service marks of their respective owners.



Printed on recycled paper

---

# Contents

---

## About This Guide

- Document Purpose and Intended Audience ..... iii
- Document Summary ..... iii
- Product-Related Documents ..... iv

## 1 Introduction

- What is the Multiuser Feature? ..... 1-1
- Feature List ..... 1-1
- Sample Multiuser Network Topologies ..... 1-2
- Multiuser Feature Package Contents ..... 1-4

## 2 Installation

- Hardware Requirements ..... 2-1
- Supported Network Adapters ..... 2-3
- Software and Installation Requirements ..... 2-4
  - Installation Worksheet ..... 2-5
- Installing the Multiuser Feature ..... 2-6
- Configuring the Multiuser Feature ..... 2-8

## Index

---

# About This Guide

---

## Document Purpose and Intended Audience

This guide describes how to install and use the COMSPHERE 6700 Series Network Management System (NMS) Multiuser feature.

It is assumed that you have a basic understanding of modems and their operation, are knowledgeable about data communications, and are familiar with Windows terminology and conventions. You or your LAN administrator should also have knowledge of TCP/IP.

## Document Summary

Section	Description
Chapter 1	<i>Introduction.</i> Provides an introduction to the multiuser features and network topologies.
Chapter 2	<i>Installation.</i> Presents hardware and software requirements and installation steps.
Glossary	Refer to <i>COMSPHERE 6700 Series Network Management System User's Guide</i> , Document Number 6700-A2-GY31.
Index	Lists key terms, acronyms, concepts, and sections in alphabetical order.

## Product-Related Documents

<b>Document Number</b>	<b>Document Title</b>
3000-A2-GA31	<i>COMSPHERE 3000 Series Carrier, Installation Manual</i>
3610-A2-GB46	<i>COMSPHERE 3600 Series Data Service Units, Models 3610 and 3611, User's Guide</i>
3610-A2-GB48	<i>COMSPHERE 3600 Series Data Service Units, Models 3610 and 3611, Time Division Multiplexer, Multichannel Multipoint, and Digital Bridge Options Supplement</i>
3610-A2-GB49	<i>COMSPHERE 3600 Series Data Service Units, Models 3610 and 3611, Dial Backup Module Options Supplement</i>
3810-A2-GB30	<i>COMSPHERE 3800 Series Modems, Models 3810, 3811, and 3820, User's Guide</i>
3910-A2-GN32	<i>COMSPHERE 3900 Series Modems, Models 3910 and 3911, Point-to-Point/Multipoint, Installation and Operation Manual</i>
6700-A2-GB20	<i>COMSPHERE 6700 Series Network Management System SNMP Proxy Agent Feature User's Guide</i>
6700-A2-GB22	<i>COMSPHERE 6700 Series Network Management System Network Configuration Guide</i>
6700-A2-GB23	<i>COMSPHERE 6700 Series Network Management System Remote Monitor Feature User's Guide</i>
6700-A2-GB41	<i>COMSPHERE 6700 Series Network Management System Security Manager Feature Supplement</i>
6700-A2-GY31	<i>COMSPHERE 6700 Series Network Management System User's Guide</i>

Contact your sales or service representative to order additional product documentation.

Paradyne documents are also available on the World Wide Web at:

<http://www.paradyne.com>

Select *Service & Support* → *Technical Manuals*

## Product-Related Documents

<b>Document Number</b>	<b>Document Title</b>
3000-A2-GA31	<i>COMSPHERE 3000 Series Carrier, Installation Manual</i>
3610-A2-GB46	<i>COMSPHERE 3600 Series Data Service Units, Models 3610 and 3611, User's Guide</i>
3610-A2-GB48	<i>COMSPHERE 3600 Series Data Service Units, Models 3610 and 3611, Time Division Multiplexer, Multichannel Multipoint, and Digital Bridge Options Supplement</i>
3610-A2-GB49	<i>COMSPHERE 3600 Series Data Service Units, Models 3610 and 3611, Dial Backup Module Options Supplement</i>
3810-A2-GB30	<i>COMSPHERE 3800 Series Modems, Models 3810, 3811, and 3820, User's Guide</i>
3910-A2-GN32	<i>COMSPHERE 3900 Series Modems, Models 3910 and 3911, Point-to-Point/Multipoint, Installation and Operation Manual</i>
6700-A2-GB20	<i>COMSPHERE 6700 Series Network Management System SNMP Proxy Agent Feature User's Guide</i>
6700-A2-GB22	<i>COMSPHERE 6700 Series Network Management System Network Configuration Guide</i>
6700-A2-GB23	<i>COMSPHERE 6700 Series Network Management System Remote Monitor Feature User's Guide</i>
6700-A2-GB41	<i>COMSPHERE 6700 Series Network Management System Security Manager Feature Supplement</i>
6700-A2-GY31	<i>COMSPHERE 6700 Series Network Management System User's Guide</i>

Contact your sales or service representative to order additional product documentation.

Paradyne documents are also available on the World Wide Web at:

<http://www.paradyne.com>

Select *Service & Support* → *Technical Manuals*

---

# Introduction

# 1

---

## What is the Multiuser Feature?

The COMSPHERE 6700 Multiuser feature gives you the ability to connect multiple Windows workstations together to form a network of NMS users. With this feature, each user's workstation has a complete graphical interface that interacts with the NMS as if it were a single user workstation.

The Multiuser feature consists of two separately orderable packages: Server and Client.

You can install the Multiuser Server and Client packages on the COMSPHERE 6700 Series NMS at any time.

The Multiuser feature supports up to six simultaneous users. In addition, the software provides statistical data and Platform/Network Performance Monitoring.

## Feature List

In addition to all the features of the 6700 Series NMS, the Multiuser feature provides the following capabilities:

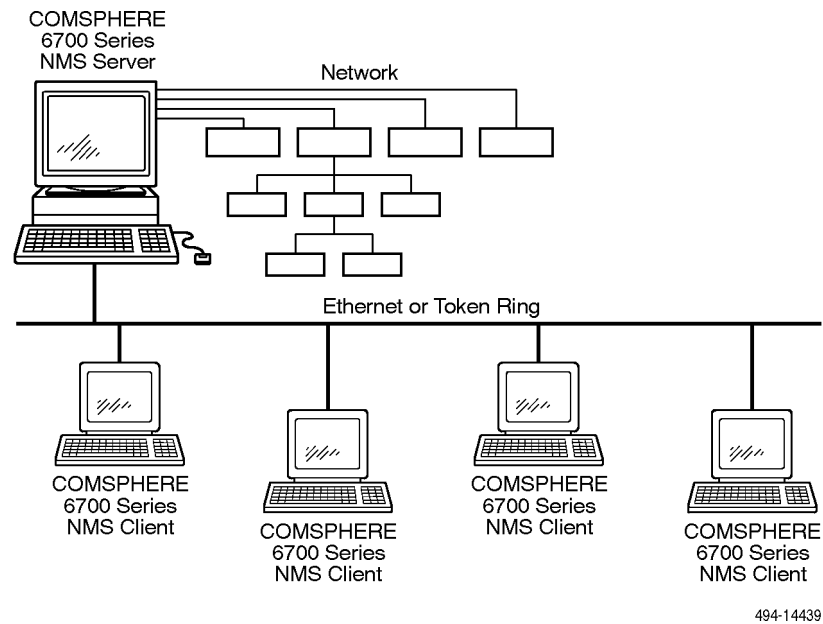
- Integrated TCP/IP, UDP/IP, and SNMP
- Concurrent Ethernet, Token Ring, FDDI, SLIP, and PPP interfaces
- Support for various network adapter vendors
- User-definable configuration via the COMSPHERE 6700 Series NMS Network Configuration feature
- Seamless multiuser (up to 6 users) via LAN and/or RS-232 connections via SLIP and/or PPP
- RS-232 Gateway to LAN via SLIP and/or PPP allowing dial-up multiuser
- Full graphical user interface features at all multiuser workstations
- Platform/Network Performance Monitoring
- Knowledge of more than one NMS server
- User-selectable active NMS server

## Sample Multiuser Network Topologies

When using the Multiuser feature, one workstation must be configured as the NMS *server* where the NMS database resides and the control channels are connected. The server is also the point of interface with all NMS devices.

All other networked workstations must be configured as an NMS *client*, which executes only the user interface portion of the NMS.

Figures 1-1, 1-2, and 1-3 show some sample Multiuser feature network topologies.



**Figure 1-1. Multiuser LAN Network**



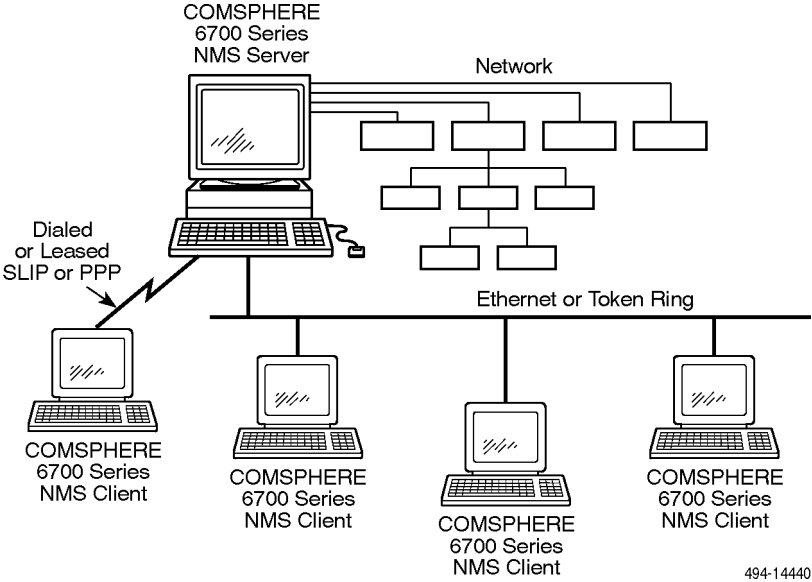


Figure 1-2. Multiuser Serial Network (Using SLIP and/or PPP)

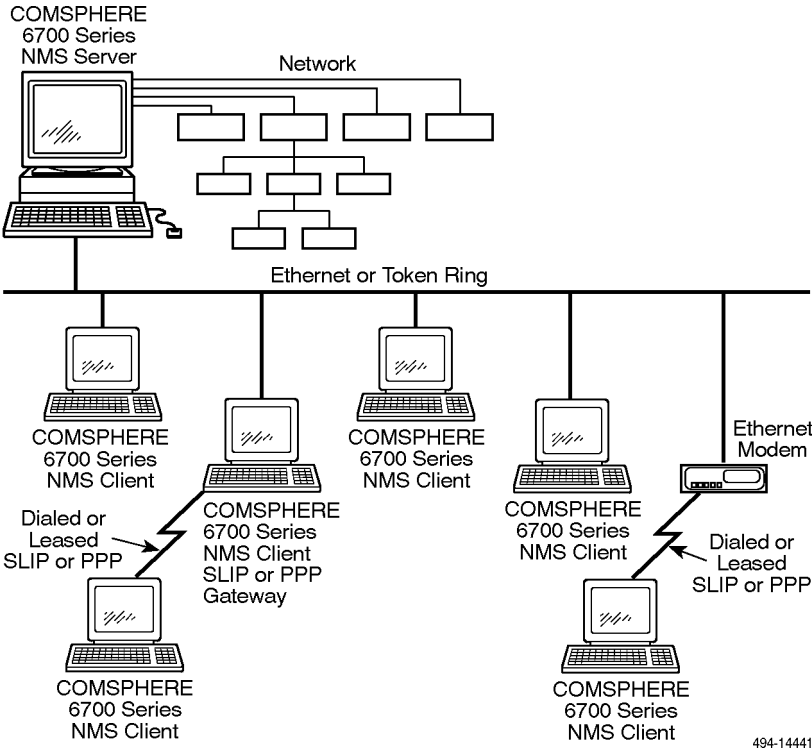


Figure 1-3. Multiuser Serial Gateway or Ethernet Modem (Using SLIP and/or PPP)

## Multiuser Feature Package Contents

The Multiuser feature package includes the following:

### Server:

- Multiuser server software on one or more 3 1/2" disks
- One *COMSPHERE 6700 Series Network Management System Multiuser Feature User's Guide*
- One *COMSPHERE 6700 Series Network Management System Network Configuration Guide*

### Client:

- Multiuser client software on one or more 3 1/2" disks
- One *COMSPHERE 6700 Series Network Management System Multiuser Feature User's Guide*
- One *COMSPHERE 6700 Series Network Management System Network Configuration Guide*

---

# Installation

# 2

---

## Hardware Requirements

The following are the hardware requirements for installation of the Multiuser feature server and client software:

### Server

- 486 processor, 66 MHz or higher PC (or compatible computer)
- 16 MB of RAM (32 MB of RAM recommended)
- Hard disk with 15 MB of free space and a minimum of 14 ms access time
- Super VGA (800 x 600 resolution) or higher with 256 colors
- Video accelerator card
- One of the following network interfaces:
  - NDIS-compliant network adapter
  - ODI network adapter
  - Additional serial port
- 1 serial port for device communication
- LAN adapter or additional serial port
- 1 parallel port for a printer
- 101 keyboard
- Mouse
- 3.5" 1.44 megabyte diskette drive
- DB-25 socket to 6-pin (RJ11) socket adapter (Part #002-0025-0031)

This configuration is sufficient for a network of 1–512 local and remote devices. If the number of devices increases, use the following table as a guideline for upgrading your hardware configuration:

<b>Number of Devices</b>	<b>Processor Required</b>	<b>Memory Required</b>
513–1024	486 (66 MHz)	16 megabytes
1025–1536	486 (90 MHz)	16 megabytes
1537–4000	Pentium (133 MHz)	32 megabytes

### **Client**

- 486 processor, 66 MHz or higher PC (or compatible computer)
- 16 MB of RAM (32 MB of RAM recommended)
- Hard disk with 15 MB of free space and a minimum of 14 ms access time
- Super VGA (800 x 600 resolution) or higher with 256 colors
- Video accelerator card
- One of the following network interfaces:
  - NDIS-compliant network adapter
  - ODI network adapter
  - Additional serial port
- 1 serial port for device communication
- LAN adapter or additional serial port
- 1 parallel port for a printer
- 101 keyboard
- Mouse
- 3.5" 1.44 megabyte diskette drive

This configuration is sufficient for a network of 1–512 local and remote devices. If the number of devices increases, use the following table as a guideline for upgrading your hardware configuration:

<b>Number of Devices</b>	<b>Processor Required</b>	<b>Memory Required</b>
513–1024	486 (66 MHz)	16 megabytes
1025–4000	Pentium (133 MHz)	32 megabytes

## Supported Network Adapters

To use the Multiuser feature on Ethernet, Token Ring, or FDDI, you must install a supported network adapter board. Supported boards are listed in Table 2-1.

**Table 2-1. Support Network Adapter Boards (1 of 2)**

Interface	Vendor	Modem	
Ethernet	3COM	3C501 Ether Link 3C503 Ether Link II 3C505 Ether Link Plus 3C507 Ether Link 16 3C509 Ether Link III 3C523 Ether Link/MC TP 3C527 Ether Link/MC 32	
	Allied Telesis	AT-1500 Network Adapter	
	Hewlett-Packard	HP27247/HP27252 Plus	
	Intel	EtherExpress 16 and 16T	
	Novell/Excelan	EXOS105T NE1000 NE2000	
	Racal InterLan	NI5210 NI6510	
	SMC	SMC 8000 SMC Elite 16	
	Ungermann-Bass		Networth EtherNext 16-Bit UTP
			NIUpc/EOTP
			NIUps
	Western Digital		EtherCard Plus EtherCard Plus Elite 16
Xircom		All PE Models All PE2 Models All PE3 Models	
Other		(NDIS Driver Required)	

**Table 2-1. Support Network Adapter Boards (2 of 2)**

<b>Interface</b>	<b>Vendor</b>	<b>Modem</b>
Token Ring	IBM	16/4 Token Ring Adapter
	Xircom	All PT Models
	Madge	Smart 16/4 RingNode adapter
	Proteon	p139X p189X p1990
	Raycone	16/4 Token Ring Adapter
	Other	(NDIS Driver Required)
FDDI	Any	(NDIS Driver Required)

## Software and Installation Requirements

You must have one of the following sets of software installed before you install the Multiuser feature server or client software:

- COMSPHERE 6700 Series NMS Release 5.0.0 or higher with Microsoft Windows 95 or Windows NT, or
- COMSPHERE 6700 Series NMS Release 4.0.0 or higher with Microsoft Windows 3.1.

Additional network installation requirements are based on the software installed:

- With COMSPHERE 6700 Series NMS Release 5.0.0 or higher, it is expected that the user has installed the TCP/IP stack and has a functioning network.
- With COMSPHERE 6700 Series NMS Release 4.0.0 or higher, NetManage software is supplied to meet licensing requirements. Do not separately install the NetManage software. During the *Installing the Multiuser Feature* procedure, the NetManage software is installed automatically.

## Installation Worksheet

Before installing and configuring the Multiuser feature, you need some system and network information. Use the following form to collect the necessary information before you start the installation process. Retain this form as a record of this information. Examples are shown in brackets [ ].

<b>Multiuser Feature Installation and Configuration Information</b>
<p><b>General</b></p> <p>Where to install the software [c:\pcnms]: _____</p> <p>Location of network drivers [c:\pcnms]: _____</p> <p>Software Serial Number [149301]: _____</p> <p>Software Key Number [dkjslmo]: _____</p> <p>Network Interface Name [Ethernet0]: _____</p> <p>Network Interface Type [Ethernet]: _____</p>
<p><b>Multiuser Workstation</b></p> <p>Internet Address of Workstation [192.0.2.2]: _____</p> <p>Unique Node Name [Largo Bldg. H]: _____</p> <p>NMS Server(s) Name [6700 Bldg. H]: _____</p> <p>NMS Server(s) IP Address [192.0.2.1]: _____</p>
<p><b>LAN/Hardware Interface</b></p> <p>Adapter Vendor Name [Western Digital]: _____</p> <p>Board Type [Ether Card Plus]: _____</p> <p>Interrupt Level [5]: _____</p> <p>I/O Base Address [0x300]: _____</p>
<p><b>SLIP Interface</b></p> <p>Baud Rate [9600]: _____</p> <p>Flow Control (Hardware): _____</p> <p>Modem Type [Hayes compatible]: _____</p> <p>Port [COM 1]: _____</p> <p>Telephone Number [9,1,813-530-2671]: _____</p>
<p><b>Optional</b></p> <p>Subnet Mask [255.255.255.0]: _____</p> <p>Default Gateway [192.0.2.254]: _____</p>

## Installing the Multiuser Feature

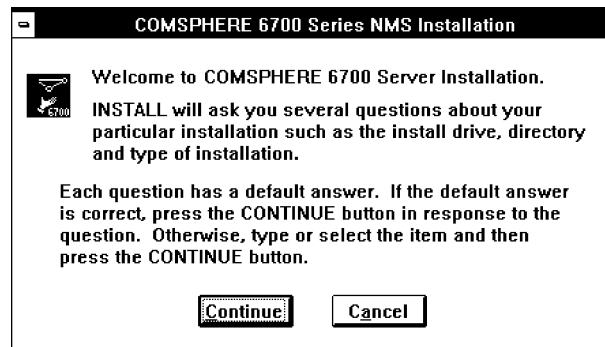
To install the Multiuser feature server or client software, start from the Program Manager window.

### NOTE:

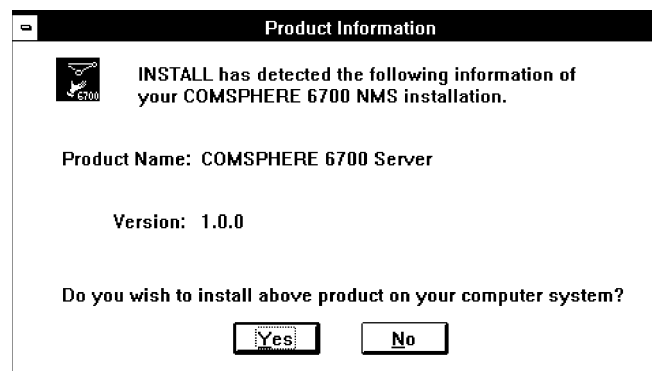
NMS is designed to be the primary application program running on a personal computer. If you use NMS with other applications, it is your responsibility to ensure compatibility.

### ► Procedure

1. Insert Disk #1 into Drive A.
2. From the Program Manager window, choose File.
3. From the File menu, choose Run.
4. In the Command Line field, type **A:\INSTALL**.
5. Choose OK. The Welcome window appears.

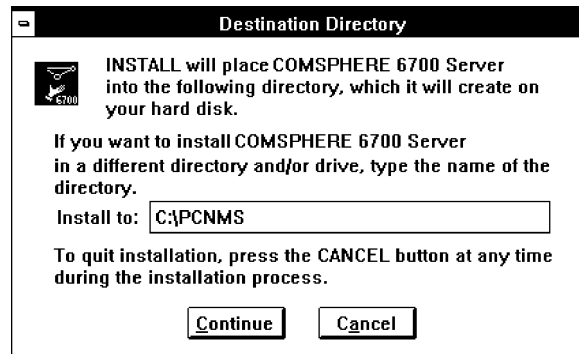


6. Choose Continue. The Product Information window appears.



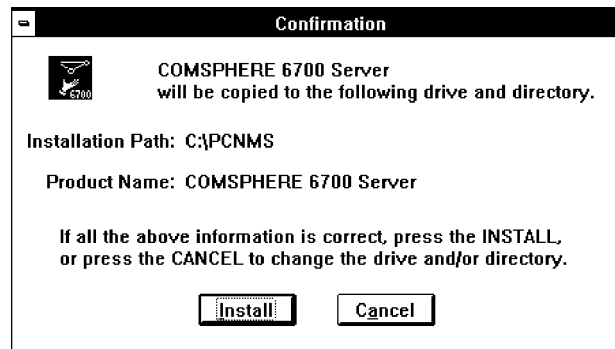


7. Choose Yes. The Destination Directory window appears.

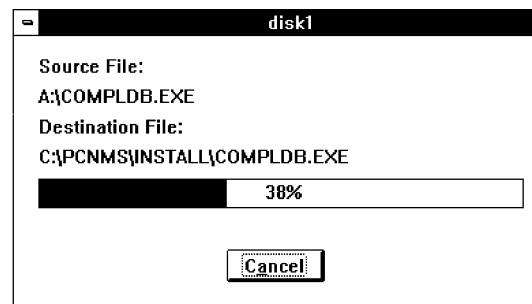


The Destination Directory window allows you to place the NMS software into a specific directory. A single directory within a single partition is required.

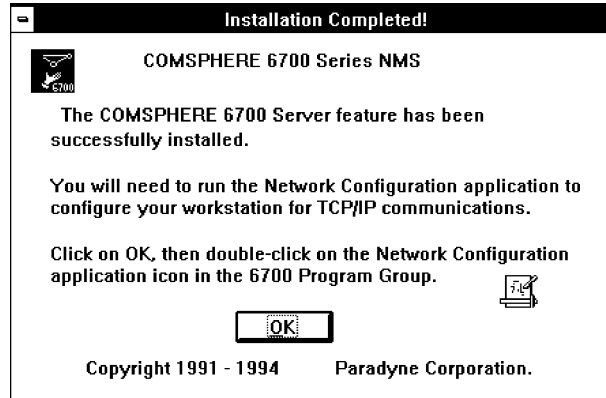
8. Enter a subdirectory location or choose the default setting of **C:\PCNMS**.
9. Choose Continue. The Confirmation window appears.



10. Choose Install to confirm the installation of the NMS software into the specified directory. The Completion status window appears.



This window displays a bar indicating the percentage of completion for the current installation. In addition, the names of the files being installed appear above the bar until the installation is complete. The Installation Completed! window appears.



11. Choose OK to return to Windows.
12. To start NMS, choose the NMS icon from the COMSPHERE 6700 Program Group window.

## Configuring the Multiuser Feature

After installation, use the Network Configuration application option to customize your configuration for TCP/IP networks if not already configured. For details on doing so, refer to the *COMSPHERE 6700 Series Network Management System Network Configuration Guide*.

---

# Index

---

## C

client  
    hardware requirements, 2-2  
    package contents, 1-4

## E

Ethernet, supported network adapters, 2-3  
Ethernet modem, sample topology, 1-3

## F

FDDI, supported network adapters, 2-3

## I

installation, procedure, 2-6

## L

LAN network, sample topology, 1-2

## S

sample topologies  
    Ethernet modem, 1-3  
    LAN network, 1-2  
    serial gateway, 1-3  
    serial network, 1-3  
serial gateway, sample topology, 1-3  
serial network, sample topology, 1-3  
server  
    hardware requirements, 2-1  
    package contents, 1-4, 2-1  
software requirements, 2-4  
supported network adapters, 2-3

## T

Token Ring, supported network adapters, 2-3  
topologies, 1-2