



SPECIFICATIONS

MODEL	EMR-16	EDR-10PV/EDR-16PV	EDR-20PH
Number of Video Inputs	16 analog	10/16 analog	16 analog + 4 IP
Maximum Record Speed	120 fps	120 fps	240 fps (analog and IP)
Maximum Display Speed	480 fps	120 fps	480 fps
Operating System	Embedded OS on flash drive	Win XP® embedded on flash drive	Win XP Pro® on isolated hard drive
Base Storage/Max. Internal Storage	250GB/1TB	500GB/1TB	1TB
External HD Expansion	SATA up to 4TB	NA	NA
Analog Video Input	1V p-p, 75 Ohm	1V p-p, 75 Ohm (dip switch)	1V p-p, 75 Ohm (dip switch)
Analog Video Loop-out	16	10/16 (optional cable required)	16 (optional cable required)
Recording Modes	Schedule, motion detection, alarm input and concurrent	Schedule, motion detection, alarm input and concurrent	Schedule, motion detection, alarm input and concurrent
Video Export	USB Drive, Network or optional DVD	DVD-R/RW and Network	DVD-R/RW and Network 4 with upgrade
Screen Display	1, 4, 6, 9 or 16	1, 4, 6, 9, 10,13 or 16	1, 4, 6, 9, 10,13,16 or 25
Pre/Post-alarm Record	Yes	Yes	Yes
Backup File Format	JPEG	Encrypted, AVI, BMP or JPEG	Encrypted, AVI, BMP or JPEG
IP Display	N/A	N/A	1@ 30 fps or 4, 6, 9, 10, 13, 16, 25 @ 1-2 fps
Main Monitor	1 NTSC/BNC	XGA (1024 x 768)	XGA (1024 x 768)
Spot Monitors	1 NTSC/BNC	1 NTSC/BNC	1 NTSC/BNC
Number of P.O.S. Channels	N/A	4 serial/16 IP	4 serial/16 IP
Remote Viewing	Browser-based	Client software	Client software/browser
Audio Input (Recording)	1 via RCA	1 via mini-jack	8 via breakout cable
Number Alarm In/Out	16/1	8/8 (terminal blocks)	8/8 (terminal blocks)
Alarm Relay Rating	12VDC/500mA	12VDC/500mA	12VDC/500mA
Number of RS485 Ports	1	4	4
Connectivity (LAN/WAN)	10/100 Base T/TX, RJ-45 x 1	10/100/1000 Base T/TX, RJ-45 x 1	10/100/1000 Base T/TX, RJ-45 x 1
Compression	MJPEG	MJPEG	MJPEG/MPEG4, analog and IP
Image Compression Dimensions	720 x 240 = 8-32 KB/frame	360 x 240 = 2-4 KB/frame 720 x 240 = 4-8 KB/frame 720 x 480 = 7-14 KB/frame	360 x 240 = 2-4 KB/frame 720 x 240 = 4-8 KB/frame 720 x 480 = 7-14 KB/frame
Power	120 VAC, 50-60 Hz, 70 W maximum	115-220 VAC, 50-60 Hz, 270 W (auto switch)	115-220 VAC, 50-60 Hz, 270 W (auto switch)
Environmental	5°-40°C or 41°-104°F < 90%, non-condensing	5°-40°C or 41°-104°F < 90%, non-condensing	5°-40°C or 41°-104°F < 90%, non-condensing
UL Certification	UL	UL/TUV	UL/TUV
Average Weight	16.72 lbs (7.6 kg) (1 HD)	26.4 lbs (11.97 kg) (1 HD)	26.4 lbs (11.97 kg) (1 HD)
Physical Dimensions	W - 14.5" (368 mm) D - 16.56" (420.5 mm) H - 3.46" (88 mm)	W - 16" (406.4 mm) D - 13.25" (336.55 mm) H - 5.75" (146.05 mm)	W - 16" (406.4 mm) D - 13.25" (336.55 mm) H - 5.75" (146.05 mm)

ELMO USA Corp.

Headquarters
1478 Old Country Road
Plainview, NY 11803-5034, U.S.A.
Tel. (516) 501-1400 Fax (516) 501-0429
Email: elmo@elmousa.com
Web: <http://www.elmousa.com>

West Coast Branch
Cypress Pointe Business Park
5676 Corporate Avenue
Cypress, CA 90630, U.S.A.
Tel. (714) 828-8457 Fax (714) 828-8429



Distributed by:

elmo@elmousa.com :: www.elmousa.com :: Copyright ELMO USA Corp. 2007. SUBJECT TO CHANGE WITHOUT NOTIFICATION



Digital Video Recorders

SECURE.
INTELLIGENT.
UPGRADEABLE.



ProVident™ Series

SECURE. INTELLIGENT. UPGRADEABLE.

ELMO
FOCUS ON THE FUTURE

Embedded Performance That Will Exceed Your Expectations

With the market and technology continually changing and evolving, you need a DVR supplier, such as ELMO, who fully understands and appreciates the ramifications of these changes. We know that it takes much more than simply having a reliable system. Instead, it takes uncommon robustness and innovative features that deliver extraordinary performance and value. These attributes are the hallmarks of ELMO's new ProVident Series DVRs.

Secure

ProVident delivers the stability and virus-free operation of embedded systems without sacrificing ease of use or functionality. When a DVR system crashes and crucial video is lost, the end-user's initial investment is wasted—and lost time and recovery costs put a strain on the integrator and end-user alike. Because each ProVident DVR operating system is isolated from the hard drive that stores video, these reliability issues are eliminated.

Intelligent

ELMO has added even more intelligence to our DVR system software. It provides proactive email notification to designated users or the administrator. Various fault conditions of the system, alarm inputs or motion detection events are reported, so that appropriate action can be initiated in a timely manner. Ease of use is enhanced through simplified setup procedures and on-screen menus.

Upgradeable

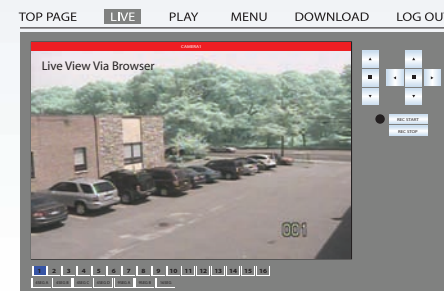
Powerful, optional extensions of the EDR series capabilities, such as P.O.S. integration, make them ideal for retail and other demanding environments. ELMO's hybrid DVR/NVR system can also ease the transition into the IP video domain when the application calls for a mix of analog and IP cameras. The EDR-20PH comes with VMS Pro software that includes one channel of configurable video analytic software. This enterprise-level software can be expanded to four video analysis channels and manages all EDR series DVRs.

EMR Model



EMR-16

- :: Embedded RTOS with simple mouse setup
- :: 16 video inputs with loop-outs
- :: 120 fps viewing and recording
- :: Sophisticated notification features
- :: Manage all functions via browser, including file downloads
- :: Dual analog monitors for alarms or sequencing
- :: 250GB to 1TB storage with mirroring



EDR Models

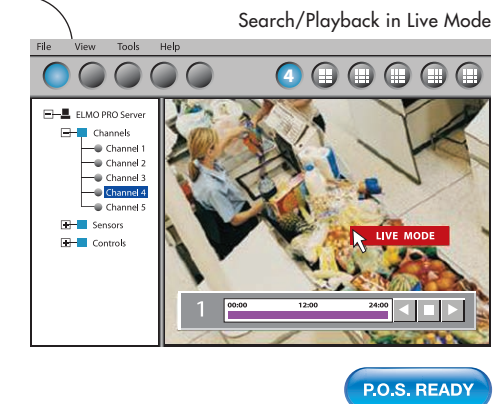


ELMO's latest DVRs have all new high-performance power supplies, CPUs and enhanced cooling capabilities for long life.

Typical EDR Applications

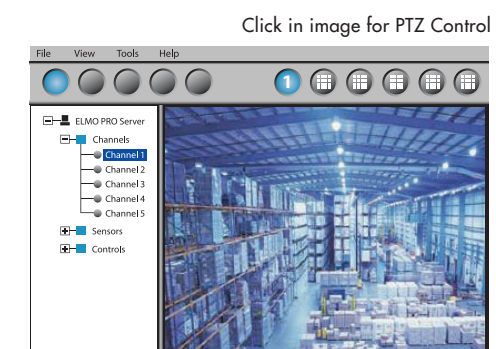
EDR-10PV

- :: Windows® XP embedded OS
- :: 120 fps viewing and recording
- :: Search/Playback in Live Mode
- :: 10 video channel inputs for EDR-10PV and 16 video channel inputs for the EDR-16PV
- :: Compact wall-mountable chassis
- :: 500GB expandable to 1TB
- :: DVD burner standard for file backup
- :: ELMO VMS Pro Lite software/ P.O.S. upgradeable



P.O.S. READY

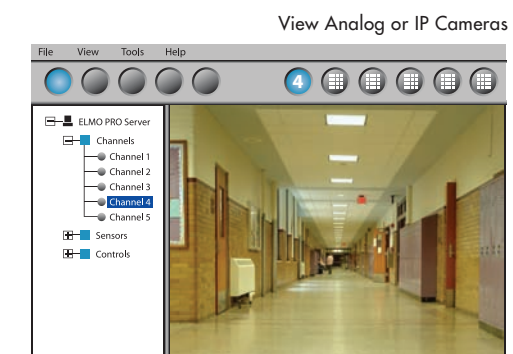
EDR-16PV



P.O.S. READY

EDR-20PH

- :: Windows® XP Pro on isolated HD
- :: Hybrid DVR/NVR handles up to 16 analog and 4 IP cameras
- :: 240 fps recording at up to 720 x 480 resolution
- :: Search/Playback in Live Mode
- :: 1TB on-board video storage
- :: DVD burner standard for file backup
- :: ELMO VMS Pro software with one channel of VL video analysis software



P.O.S. READY

**Top Quality.
Reliable Support.
That's the ELMO Edge.**

Quality Construction

ELMO DVR products are designed and manufactured with the finest materials, latest components, processors and hard drives, for long life and optimum performance.

Image Quality

Crystal-clear, color-accurate images for a wide range of applications.

Technical Support

All ELMO DVR products are backed by a solid warranty (two years parts and labor, one year hard drive), as well as the most knowledgeable, helpful and accessible technical support staff to assist you before and after your purchase.

For more information about the new ProVident Series or other ELMO products, call us at 516.501.1400 or visit www.elmoussa.com.