



**DESCRIPTION**

- Permanent installation system, selectable single-amp or bi-amp
- Rotatable HF horn provides mounting options

The MK5300 Series of 2-way, high output, trapezoidal loudspeakers are designed as main PA for smaller venues, including houses of worship, auditoriums/theaters, A/V systems, hotel ballrooms, and meeting rooms. The Series is also ideal for distributed or fill purposes in larger venues, including houses of worship, auditorium/theaters, arenas, stadiums, nightclubs, and themed-entertainment complexes.

To meet the design goals for the intended applications, EAW engineers developed a new, high performance, 3-inch voice coil, compression driver mating it to a selection of six different HF horns with patterns from 60° x 45° to 120° x 60°. The horns are as large as the enclosure size allows to maintain consistent directivity throughout the HF passband. A 4-inch voice coil, 15 inch LF driver, was designed to complement the sonic character and output of the HF driver. All MK5300 models are carefully voiced to sound similar, permitting diverse horn patterns to be mixed throughout an installation while maintaining the same sonic quality. The results are cleaner, usable, high-fidelity output to significantly higher levels than is normally expected from loudspeakers of this size and price.

Single-amp and bi-amp operating modes are user-selectable. In single-amp mode, the beamwidth-matching passive crossover is designed for even power response through crossover, low power losses, and high power handling. In bi-amp mode a digital signal processor (DSP) is required, providing sophisticated processing to maximize performance.

Foam-backed grilles hide the drivers from view for pleasing aesthetics. Thirteen mounting points allow enclosures to be mounted in virtually any configuration. Additional mounting points mate with OmniMount® 120.0 Series or similar brackets. Standard colors are black and white. Other colors can be specified as a special order items.

The MK5300 are the larger companions to the MK2300 Series loudspeakers. Enclosures for both series are the same height facilitating installation where more than one horn pattern and/or type of loudspeaker capability is needed. Six Year Warranty.

**2-WAY FULL-RANGE 60° x 45°**

See *NOTES TABULAR DATA* for details

**CONFIGURATION**

| Subsystem |  |                |
|-----------|--|----------------|
|           | <i>Transducer</i>                                  | <i>Loading</i> |
| LF        | 1x 15 in cone                                      | Vented         |
| HF        | 1x 1.4 in exit, 3 in voice coil compression driver | Horn-loaded    |

| Operating Mode |                           |                                   |
|----------------|---------------------------|-----------------------------------|
|                | <i>Amplifier Channels</i> | <i>External Signal Processing</i> |
| Single-amp     | LF/ HF                    | High pass filter                  |
| Bi-amp         | LF, HF                    | DSP w/2-way filters               |

**PERFORMANCE <sup>1</sup>**

|   |                 |  |
|---|-----------------|--|
| <b>Operating Range</b>                        | 62 Hz to 20 kHz |  |
| <b>Nominal Beamwidth</b> ( <i>rotatable</i> ) |                 |  |
| Horz  | 60°             |  |
| Vert  | 45°             |  |

| <b>Axial Sensitivity</b> ( <i>whole space SPL</i> ) |        |                   |
|---|--------|-------------------|
| LF/HF   | 97 dB  | 62 Hz to 20 kHz   |
| LF  | 97 dB  | 62 Hz to 1650 Hz  |
| HF  | 111 dB | 1200 Hz to 17 kHz |

| <b>Input Impedance</b> ( <i>ohms</i> ) |                |                |
|--|----------------|----------------|
|  | <i>Nominal</i> | <i>Minimum</i> |
| LF/HF                                  | 8              | 6.9 @ 145 Hz   |
| LF                                     | 8              | 7.0 @ 165 Hz   |
| HF                                     | 8              | 8.4 @ 5800 Hz  |

| <b>High Pass Filter</b> |                                   |  |
|-------------------------|-----------------------------------|--|
| High Pass               | =>50 Hz, 12 dB/octave Butterworth |  |

| <b>Accelerated Life Test <sup>2</sup></b> |      |               |
|---|------|---------------|
| LF/HF                                     | 80 V | 800 W @ 8 ohm |
| LF  | 80 V | 800 W @ 8 ohm |
| HF  | 35 V | 150 W @ 8 ohm |

| <b>Calculated Axial Output Limit</b> ( <i>whole space SPL</i> ) |                |             |
|---|----------------|-------------|
|   | <i>Average</i> | <i>Peak</i> |
| LF/HF   | 126 dB         | 132 dB      |
| LF  | 126 dB         | 132 dB      |
| HF  | 133 dB         | 139 dB      |

**ORDERING DATA**

| <i>Description</i>                           | <i>Part Number</i> |
|--|--------------------|
| MK5364 2-Way Full-Range Loudspeaker Black    | 0013151            |
| MK5364 2-Way Full-Range Loudspeaker White    | 0013763            |
| MK5364 2-Way Full-Range Loudspeaker Black-WP | 0013789            |

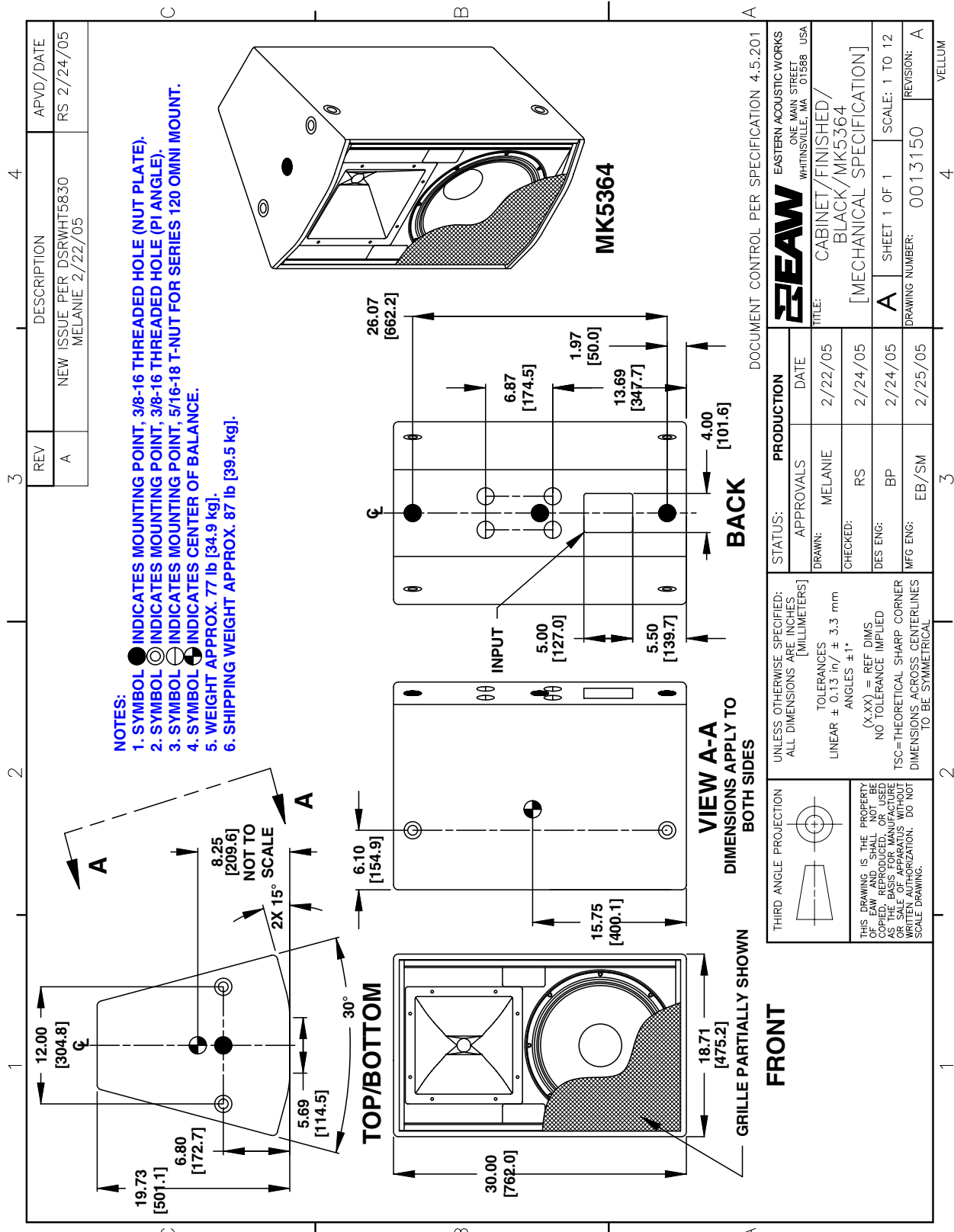
| <b>Optional Accessories</b>                |         |
|--|---------|
| Eyebolt/Forged Shoulder (3/8-16 x 1.25 in) | 104001  |
| MK2/5000 U-Bracket Black                   | 0007869 |
| MK2/5000 U-Bracket White                   | 0015076 |

<sup>1</sup> To achieve specified performance, the listed external signal processing with EAW-provided settings is required.

<sup>2</sup> For recommendations to select power amplifier size refer to : "HOW MUCH AMPLIFIER POWER DO I NEED?" on the EAW web site.

ENCLOSURE

|          |                                     |
|----------|-------------------------------------|
| Material | Baltic birch plywood                |
| Finish   | Wear resistant textured black paint |
| Grille   | Powder-coated perforated steel      |



NOTES: This drawing has been reduced. Do not scale. For WP version, add 0.25 in / 6.4 mm to the outside dimensions = 0.125 in / 3.2 mm all around.

