

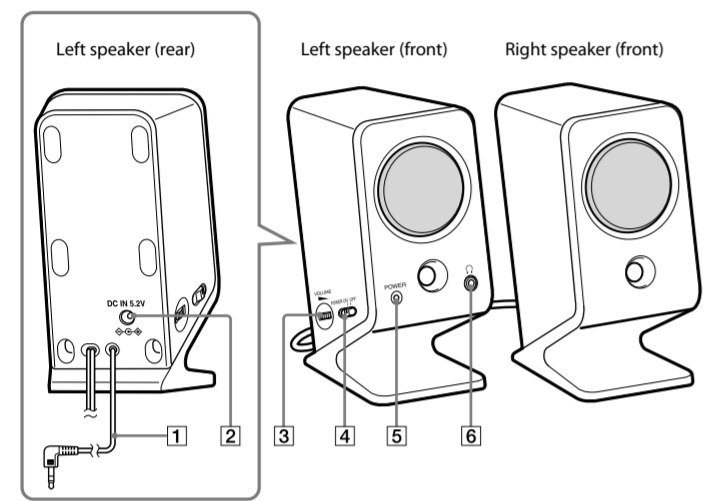
Active Speaker System

Operating Instructions
Mode d'emploi
Manual de instrucciones

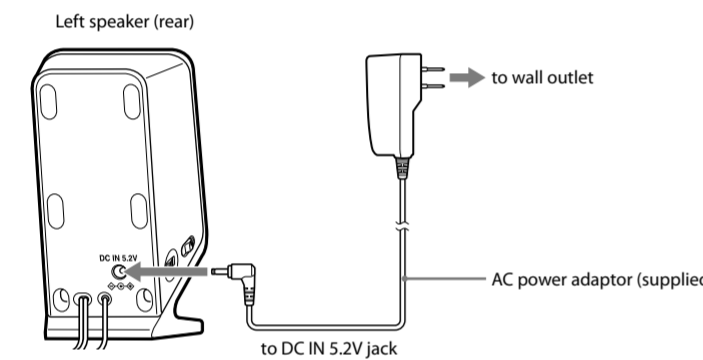
SRS-A3

©2010 Sony Corporation Printed in China

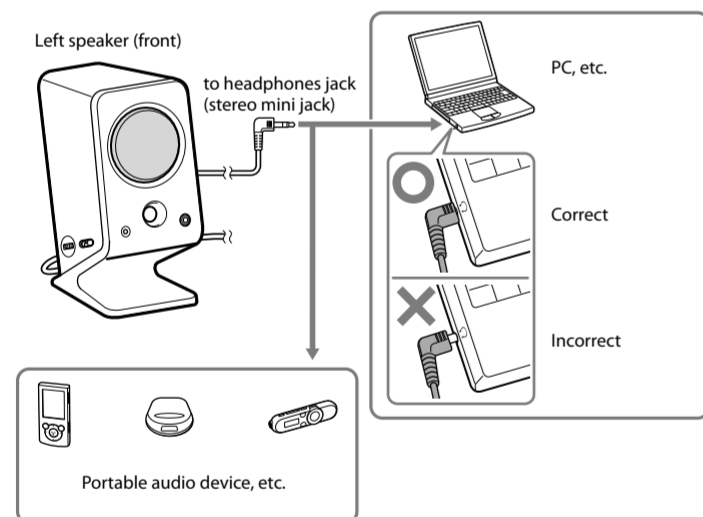
A



B



C



If connecting the system via a device with a built-in radio or tuner, radio broadcasts or TV sound may not be received, or sensitivity may be reduced significantly.

English

Before operating the system, please read this manual thoroughly and retain it for future reference.

WARNING

To reduce the risk of fire or electric shock, do not expose this apparatus to rain or moisture.

To reduce the risk of electrical shock, do not open the cabinet. Refer servicing to qualified personnel only.

To reduce the risk of fire, do not cover the ventilation opening of the apparatus with newspapers, tablecloths, curtains, etc. Do not place the naked flame sources such as lighted candles on the apparatus.

To reduce the risk of fire or electric shock, do not expose this apparatus to dripping or splashing, and do not place objects filled with liquids, such as vases, on the apparatus. Do not install the appliance in a confined space, such as a bookcase or built-in cabinet.

As the main plug of AC power adaptor is used to disconnect the AC power adaptor from the mains, connect it to an easily accessible AC outlet. Should you notice an abnormality in it, disconnect it from the AC outlet immediately.

The system is not disconnected from the mains as long as it is connected to the AC outlet, even if the system itself has been turned off.

Note

This equipment has been tested and found to comply with the limits for a Class B digital device, pursuant to Part 15 of the FCC Rules. These limits are designed to provide reasonable protection against harmful interference in a residential installation. This equipment generates, uses and can radiate radio frequency energy and, if not installed and used in accordance with the instructions, may cause harmful interference to radio communications. However, there is no guarantee that interference will not occur in a particular installation. If this equipment does cause harmful interference to radio or television reception, which can be determined by turning the equipment off and on, the user is encouraged to try to correct the interference by one or more of the following measures:

- Reorient or relocate the receiving antenna.
- Increase the separation between the equipment and receiver.
- Connect the equipment into an outlet on a circuit different from that to which the receiver is connected.
- Consult the dealer or an experienced radio/TV technician for help.

CAUTION

You are cautioned that any changes or modifications not expressly approved in this manual could void your authority to operate this equipment.

This Class B digital apparatus complies with Canadian ICES-003.

Precautions

On safety

The nameplate is located on the bottom exterior of the left speaker.

- Before operating the system, be sure that the operating voltage of the system is identical to that of your local power supply.

Where purchased	Operating voltage
All countries/regions	100 V ~ 240 V AC, 50/60 Hz

- Use only the supplied AC power adaptor.

On operation

- Should any solid object or liquid fall into the system, have the system checked by qualified personnel before operating it any further.
- Although this system is magnetically shielded, do not leave recorded tapes, watches, personal credit cards, or floppy disks with magnetic coding in front of the system for an extended period of time.

On placement

- Do not set the system in an inclined position.
- Do not leave the system in a location near heat sources, or in a place subject to direct sunlight, excessive dust, moisture, rain or mechanical shock.

On cleaning

Do not use alcohol, benzine or thinner to clean the cabinet.

If the TV picture or monitor display is magnetically distorted

Although this system is magnetically shielded, there may be cases that the picture on some TV sets/personal computers may become magnetically distorted. In such a case, turn off the power of the TV set/personal computer once, and after 15 to 30 minutes turn it on again. In the case of a personal computer, take appropriate measures such as data storage before turning off.

If no improvement is apparent, locate the system farther away from the TV set/personal computer. Furthermore, be sure not to place objects in which magnets are attached or used, such as audio racks, TV stands, toys, etc., near the TV set/personal computer. These may cause magnetic distortion to the picture due to magnetic interaction.

If you have any questions or problems concerning this system that are not covered in this manual, please consult your nearest Sony dealer.

Identifying parts (See fig. A)

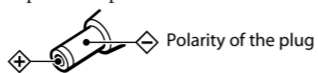
- 1 **Input (input) cable**
Connecting cord with stereo mini plug
- 2 **DC IN 5.2V jack**
- 3 **VOLUME (volume) control**
- 4 **POWER (power) switch**
- 5 **POWER (power) indicator**
- 6 **⌚ (headphones) jack**

Power Sources (See fig. B)

Connect the AC power adaptor to the DC IN 5.2V jack.

Notes on the AC power adaptor

- Use only the supplied AC power adaptor. To avoid damaging the system do not use any other AC power adaptor.



- Plug the AC power adaptor into a nearby AC outlet. In the case of a problem, unplug from the AC outlet immediately.
- Do not place the AC power adaptor on a bookshelf or in a confined place, such as a cabinet.
- To avoid fire or electric shock do not use the AC power adaptor in a place subject to liquid or moisture. Furthermore, do not place liquid-filled vessels, such as vases, etc., on the AC power adaptor.

Hooking up the system (See fig. C)

Connect the system to a source device.

When the system is connected to the monaural jack of a source device

The sound may not come through the right speaker.

Notes

- If the PC volume adjustment (master volume, WAV volume, etc.) is low, sound may be insufficient. If so, turn up the sound of the PC. For details on volume adjustment on your PC, refer to its operating instructions.
- Make sure the connection of the stereo mini plug and the jack of the source device is made properly.
- If connecting the system via a device with a built-in radio or tuner, radio broadcasts or TV sound may not be received, or sensitivity may be reduced significantly.
- If you remove the input cable while the source device (PC, etc) is working, the equipment or your ears may be damaged by unexpected loud sound. Be sure to lower the volume of the source device (PC, etc) and turn off the system when removing the input cable from the source device.

Listening to the sound

First, turn down the volume on this system. When connecting the system to the headphones output, turn down the volume of the source device.

1 Set the POWER switch to ON.

The POWER indicator lights up.

2 Start playback of the source device.

3 Adjust the volume.

Set the volume of the source device to a moderate level, and then turn up the VOLUME control on this system.

4 Set the POWER switch to OFF after use.

The POWER indicator goes off.

To use the headphones/earphones

Connect them to the ⌚ jack.

Note

If the source device has a bass boost function or equalizer function, set to off. If these functions are on, sound may be distorted.

Troubleshooting

Should you experience any problems with your speaker system, check the following list and take the suggested measures. If the problem persists, consult your nearest Sony dealer.

No sound

- Check that both this system and the source device are turned on.
- Turn up the volume of the system.
- Turn up the volume of the source device as high as possible before the onset of distortion. For details on volume adjustment, refer to the operating instructions supplied with the device.
- Make sure all connections have been correctly made.
- If the mute function of the volume adjustment of your PC is set, cancel it.
- Check if headphones are connected. If they are, disconnect them.
- Disconnect the connecting cord with stereo mini plug from the system and the PC or source device; then, firmly reconnect the connecting cord to the system and the headphone jack (stereo mini jack) of the PC or source device.

Low sound level

- Turn up the volume of the source device as high as possible before the onset of distortion. For details on volume adjustment, refer to the operating instructions supplied with the device.
- Turn up the volume of the system.
- Ensure that your PC sound balance is set to the center.
- Disconnect the connecting cord with stereo mini plug from the system and the PC or source device; then, firmly reconnect the connecting cord to the system and the headphone jack (stereo mini jack) of the PC or source device.

Distorted sound

- Turn down the volume of the source device to the point where the sound is no longer distorted. For details on volume adjustment, refer to the operating instructions supplied with the device.
- If the source device has a bass boost function, set it to off.
- Turn down the volume of the system.

There is hum or noise in the system output.

- Make sure all connections have been correctly made.
- Make sure no audio devices are positioned too close to the TV set.

The brightness of the POWER indicator is unstable.

The brightness of the POWER indicator may become unstable when the volume is turned up.

The sound comes through only one speaker.

If connecting the system to the monaural jack of a source device, the sound may come through only one speaker.

Specifications

Speaker section

Speaker system
46 mm (1 11/16 in) Full range, magnetically shielded

Enclosure type

Bass reflex

Impedance

3.2 Ω

Amplifier section

Reference output power
2.5 W + 2.5 W (10 % T.H.D., 1 kHz, 3.2 Ω)

Input
Connecting cord with stereo mini plug (approx. 1 m, 39 1/16 in) × 1

Input impedance

8 kΩ (at 1 kHz)

Output
Stereo mini jack × 1 (PHONES)

General

Power
DC 5.2 V (supplied AC power adaptor)

Dimensions (w/h/d)

Approx. 85 × 172 × 119 mm (3 3/8 × 6 7/8 × 4 3/4 in)

Mass

Left speaker:
Approx. 330 g (12 oz)
Right speaker:
Approx. 310 g (11 oz)

Supplied accessories

AC power adaptor (AC-E5212) (1)
Operating Instructions (1)

Design and specifications are subject to change without notice.

This warranty is valid only in the United States.
Cete garantie ne s'applique qu'aux États-Unis.
Esta garantía sólo es válida en Estados Unidos.

SONY®

Portable Audio

LIMITED WARRANTY (U.S. Only)

Sony Electronics Inc. ("Sony") warrants this product against defects in material or workmanship for the time periods and as set forth below when purchased directly from Sony or a Sony Retailer. Pursuant to this Limited Warranty, Sony will, at its option, (i) repair the product using new or refurbished parts or (ii) replace the product with a new or refurbished product. For purposes of this Limited Warranty, "refurbished" means a product or part that has been returned to its original specifications. **In the event of a defect, these are your exclusive remedies.**

Term: For a period of ninety (90) days from the original date of purchase of the product, Sony will, at its option, repair or replace with new or refurbished product or parts, any product or parts determined to be defective.

This Limited Warranty covers only the hardware components packaged with the Product. It does not cover technical assistance for hardware or software usage and it does not cover any software products whether or not contained in the Product; any such software is provided "AS IS" unless expressly provided for in any enclosed software Limited Warranty. Please refer to the End User License Agreements included with the Product for your rights and obligations with respect to the software.

Instructions: To obtain warranty service, you must deliver the product, freight prepaid, in either its original packaging or packaging affording an equal degree of protection to the Sony authorized service facility specified. **It is your responsibility to backup any data, software or other materials you may have stored or preserved during service and Sony will not be responsible for any such damage or loss.** A dated purchase receipt from Sony or a Sony Retailer is required. For specific instructions on how to obtain warranty service for your product.

The Address of the Laredo Fulfillment Center is:

Laredo Fulfillment Center
10227 Crossroads Loop Suite B
Laredo, TX 78045

Visit Sony's Web Site:
www.sony.com/support

Or call the **Sony Customer Information Service Center**
1-800-222-SONY (7669)

For an accessory or part not available from your authorized dealer, call:

1-800-488-SONY (7669)

Repair / Replacement Warranty: This Limited Warranty shall apply to any repair, replacement part or replacement product for the remainder of the original Limited Warranty period or for ninety (90) days, whichever is longer. Any parts or product replaced under this Limited Warranty will become the property of Sony.

This Limited Warranty only covers product issues caused by defects in material or workmanship during ordinary consumer use; it does not cover product issues caused by any other reason, including but not limited to product issues due to commercial use, acts of God, misuse, limitations of technology, or modification of or to any part of the Sony product or product purchased from other than Sony or a Sony Retailer. To determine if a retailer is part of the Sony Retailer Network, please contact Sony's Customer Service Call Center or go to www.sony.com/support. This Limited Warranty does not cover Sony products sold AS IS or WITH ALL FAULTS or consumables (such as fuses or batteries). This Limited Warranty is invalid if the factory-applied serial number has been altered or removed from the product. This Limited Warranty is valid only in the United States.

LIMITATION ON DAMAGES: SONY SHALL NOT BE LIABLE FOR ANY INCIDENTAL OR CONSEQUENTIAL DAMAGES FOR BREACH OF ANY EXPRESS OR IMPLIED WARRANTY ON THIS PRODUCT.

DURATION OF IMPLIED WARRANTIES: EXCEPT TO THE EXTENT PROHIBITED BY APPLICABLE LAW, ANY IMPLIED WARRANTY OF MERCHANTABILITY OR FITNESS FOR A PARTICULAR PURPOSE ON THIS PRODUCT IS LIMITED IN DURATION TO THE DURATION OF THIS WARRANTY.

Some states do not allow the exclusion or limitation of incidental or consequential damages, or allow limitations on how long an implied warranty lasts, so the above limitations or exclusions may not apply to you. This Limited Warranty gives you specific legal rights and you may have other rights which vary from state to state.

