



# **HP Premium Travel Phone User's Guide**

Version 1.0

Copyright © 2007 Hewlett-Packard Development Company, L.P.

The information contained herein is subject to change without notice.

The only warranties for HP products and services are set forth in the express warranty statements accompanying such products and services. Nothing herein should be construed as constituting an additional warranty. HP shall not be liable for technical or editorial errors or omissions contained herein.

### **Product Registration**

Registration is quick, easy and offers: e-mail updates containing notifications about product enhancements, the most recent support alerts, and driver updates specific to the product(s) you own.

For faster help, be sure to register your recently purchased product at **<https://register.hp.com>**

# Table of Contents

Welcome.....	1
Overview .....	1
Getting Started .....	2
What is Skype?.....	2
Glossary of terms .....	3
Minimum system requirements.....	3
Connecting the HP Premium Travel Phone.....	4
Display icons .....	4
Software Installation .....	4
HP software installation .....	5
Restoring your default audio device back to the sound card .....	8
Skype software installation .....	9
Registering as a Skype user.....	11
Another program wants to use Skype.....	13
Running the Software.....	13
Starting up .....	13
Closing down .....	13
Configuration.....	14
Making Calls .....	15
Receiving Calls .....	16
Listening to Voicemail.....	16
Collecting your voicemail messages.....	16
Troubleshooting.....	16
Uninstalling HP software .....	16
Uninstalling Skype software.....	16
Frequently asked questions .....	17
Identifying software versions.....	18
Software updates .....	19
Contacting support.....	19
Technical Specifications .....	20



## Welcome

Welcome to the HP Premium Travel Phone User's Guide.

Read this guide carefully to get the most out of your Hewlett-Packard product with Skype, and keep this guide in a safe place for future reference.

Thank you for purchasing your HP product. We hope that you spend many happy hours using it and chatting with Skype.

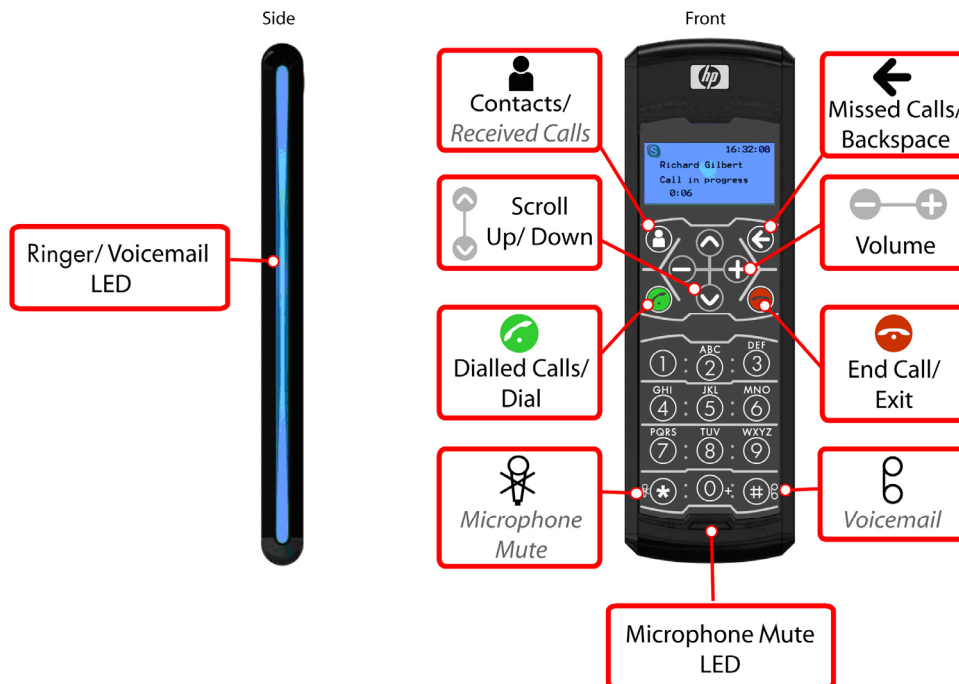
## Overview

The HP Premium Travel Phone is a single-piece USB phone with backlit LCD, keypad and a built-in ringer that connects to your computer USB port.



*HP Premium Travel Phone*

Apart from the usual number keys, the HP Premium Travel Phone has special keys. See [Making Calls](#) for more information on using these special keys.



## Getting Started

### What is Skype?

Skype software enables you to make free\* calls to your friends all over the world.

Skype also offers paid services such as SkypeOut, SkypeIn, and Skype Voicemail. SkypeOut is a service that allows you to call ordinary phones at low cost.

SkypeIn is a service that assigns you a telephone number, and people can call you from ordinary phones.

Skype Voicemail is a voicemail service for taking messages if you are away or your line is busy.

Visit [www.skype.com](http://www.skype.com) for more information about Skype and additional Skype services.

\*Requires the SkypeOut service for landline calls.

## Glossary of terms

The following terms are used in this user guide.

### **ADSL** (Asymmetric Digital Subscriber Line)

Broadband Internet connection where the download speed is faster than the upload speed.

### **Application**

Software running on your computer, such as the HP Travel Phone software.

### **CPU** (Central Processing Unit)

Main chip within any computer. Processor speeds are measured in MHz (Mega Hertz), which equals a million instructions per second, and GHz (Giga Hertz), which equals a billion instructions per second. The higher the number, the faster the processor speed.

### **HDD** (Hard Disk Drive)

Permanent memory within your computer that stores programs and settings.

### **MB** (Mega Byte)

Size of HDD or RAM, 1MB is equal to one million bytes.

### **RAM** (Random Access Memory)

Temporary memory within your computer. The larger the RAM, the faster applications run.

### **USB** (Universal Serial Bus)

Socket on your computer to connect USB hardware such as your HP Premium Travel Phone, keyboards, or mice.

### **Username**

Name used to gain access (log in) to a locked system. Usernames can contain letters and numbers.

### **Password**

Code used to gain access (log in) to a locked system. Good passwords contain an unpredictable combination of letters and numbers.

### **SysTray** (System Tray)

Area on your computer desktop next to the clock display. The SysTray shows various icons for applications that are running.

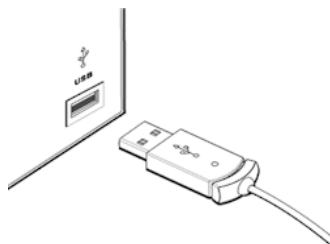
## Minimum system requirements

Before continuing the installation, you should have the following minimum system requirements:

- PC running Microsoft Windows 2000, XP, or Vista
- 400MHz processor (CPU)
- 128MB RAM
- 150MB free hard disk space
- One free USB port (USB1.1 or USB2.0)
- Internet connection (dialup: 33kbps minimum, or broadband: for example, cable or ADSL)

## Connecting the HP Premium Travel Phone




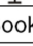






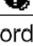




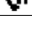

To connect the HP Premium Travel Phone, plug the USB cable from the phone into an available USB port on your computer or into a powered USB hub.



Insert the CD-ROM into your computer; this will install the HP Travel Phone and Skype software, and enable you to get the maximum benefit when using your HP Premium Travel Phone with Skype.

Refer to [Making Calls](#), [Receiving Calls](#), and [Listening to Voicemail](#) for information about using your HP Premium Travel Phone after setup is complete.

## Display icons

System Icon	Status
	Phone Book menu
	Dial menu
	Conference call
	Mute
Phone Book Icon	
	Online
	Offline
	Away
	Not available
	Do not disturb
	Skype me
	Invisible
	Unauthorized contact
Call Record Icon	
	Outgoing call
	Received calls
	Missed call
	Call in progress
	Call on hold

## Software Installation

This section describes how to install the software.

The software installation has two parts. The first part is the HP Travel Phone. The second part is the Skype software installation.

Your HP Premium Travel Phone should already be connected before installing any software. See [Overview](#) in this user guide.

If you already have a previous version of this software installed, make sure it is not running and remove it. See [Troubleshooting](#) in this user guide for software removal instructions.

If you already have Skype software installed and it is running, close it before continuing with the HP software installation.

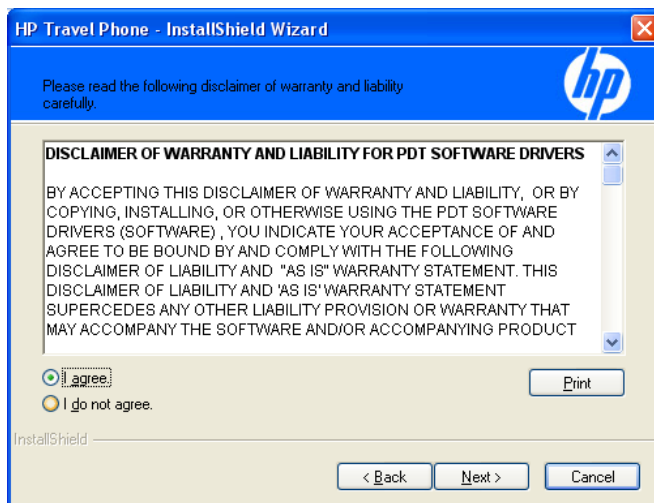


## HP software installation

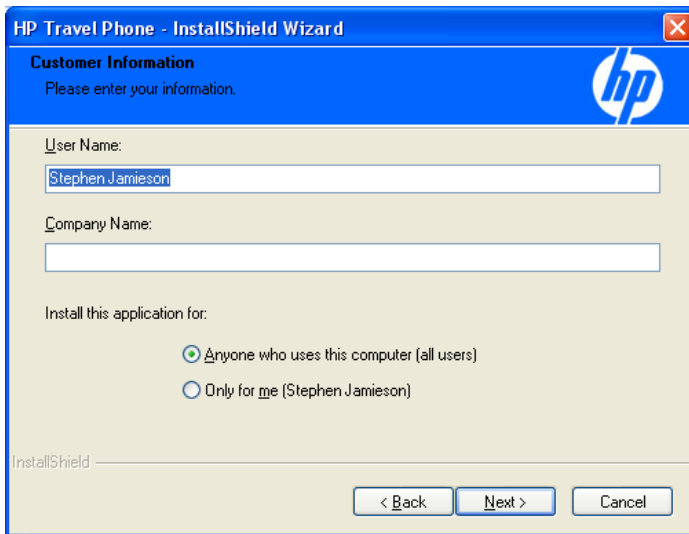
- 1 Insert the CD into your computer CD-ROM drive; the setup should start automatically.  
If it does not start automatically, browse the CD-ROM drive using My Computer or Windows Explorer and click **setup.exe**.
- 2 At the InstallShield Wizard welcome screen, click **Next** to continue, or click **Cancel** at any screen to stop the installation.



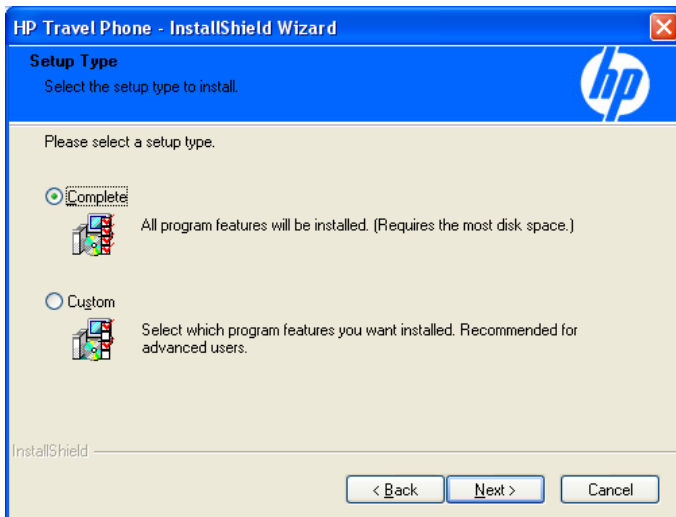
- 3 Read the software Licence Agreement. If you agree, click **I agree**, and then click **Next** to continue with the installation.



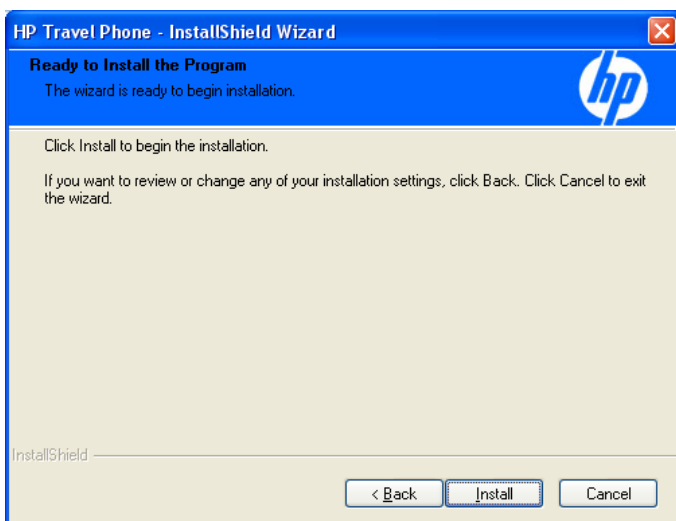
4 Enter your **User Name** and **Company Name**. We recommended selecting the **Anyone who uses this computer (all users)** option. Click **Next** to continue with the installation.



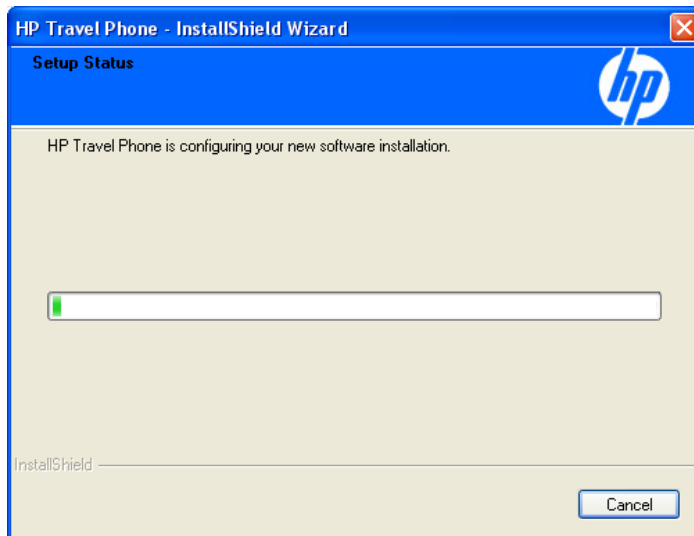
5 For ease of installation, select **Complete**. Click **Next** to continue with the installation.



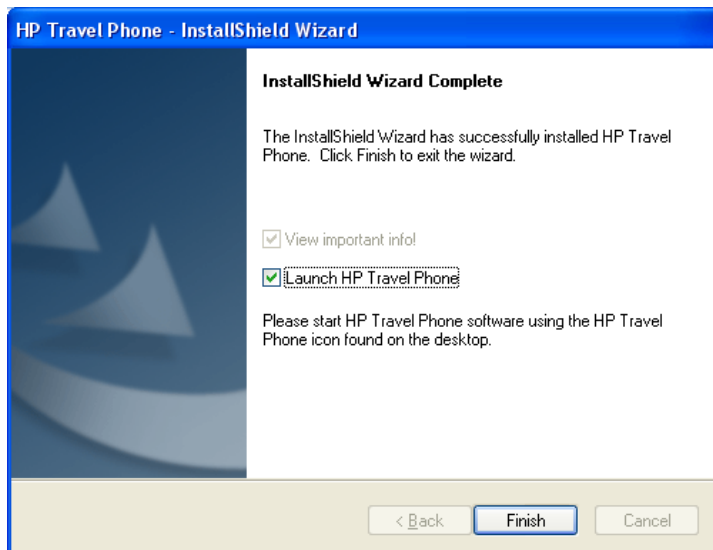
6 Click **Install** to continue with the installation.



The Setup Status screen shows the software installation progress, which can take several minutes to install.



**7** Click **Finish** to complete the installation of the HP Travel Phone software.



---

**NOTE:** Make sure you read and understand the important info before using your HP Premium Travel Phone for the first time.

---

## Restoring your default audio device back to the sound card

When you install the HP Premium Travel Phone on the computer, it is automatically set by Windows as the default audio device. All sounds, such as music, Windows, and game sounds, play through the phone and not the computer speakers. To play these sounds through the computer speakers, you need to change a few settings in the Sounds and Audio Devices Properties that should be displayed on screen at the end of the software installation. (Notice that HP Premium Travel Phone is the default device for both Sound playback and Sound recording.)

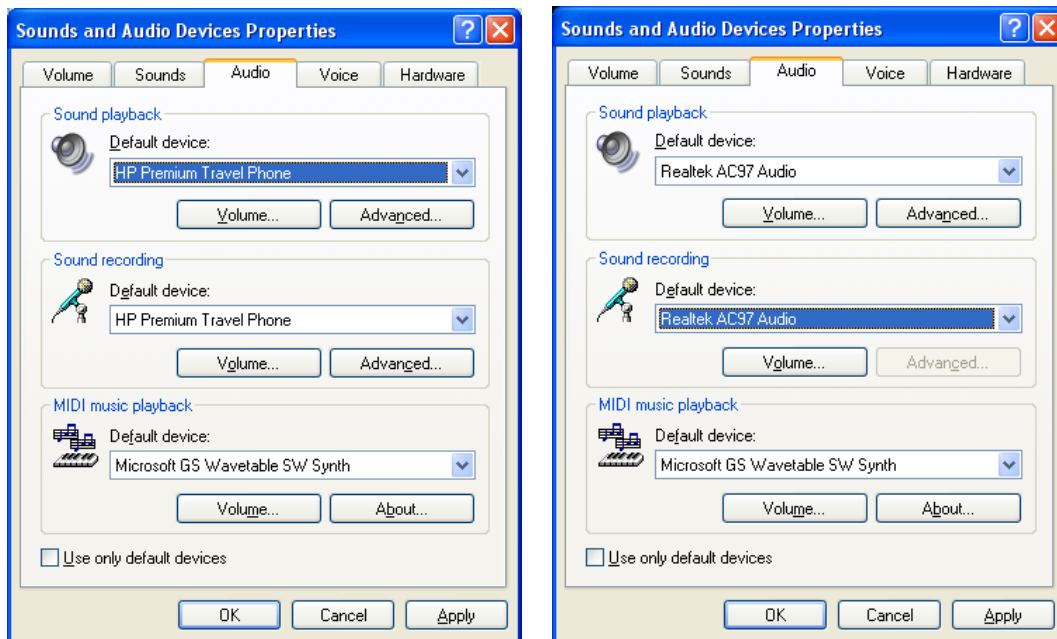
---

**NOTE:** Changing the settings to allow sounds to play through the computer speakers does not affect the functionality of the HP Premium Travel Phone.

---

- 1 Select your sound card from the **Sound playback** drop-down list.
- 2 Select your sound card from the **Sound recording** list.

In our example, the sound card is Realtek AC97 Audio; yours might be different.



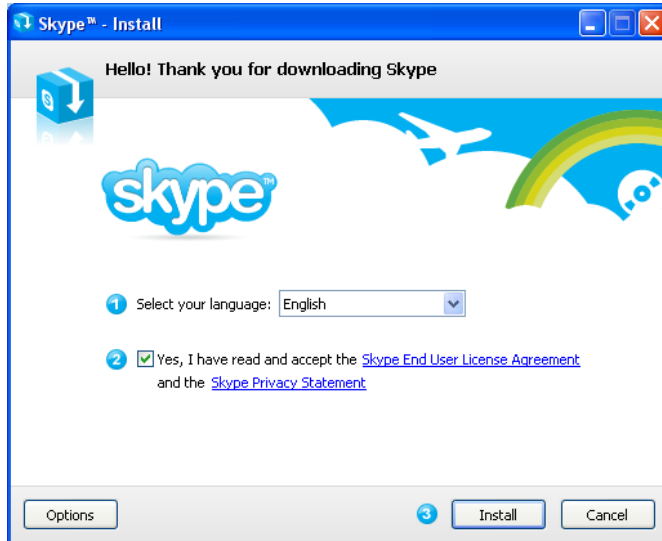
- 3 Click **OK** to play all music, Windows, and game sounds through the computer speakers.

## Skype software installation

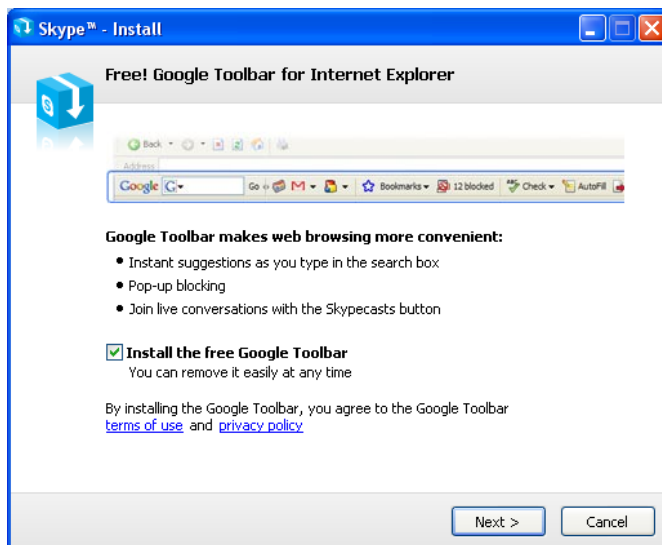
If you already have the latest version of the Skype software installed, you can cancel the Skype installation at this point and ignore this section.

### Skype Licence Agreement

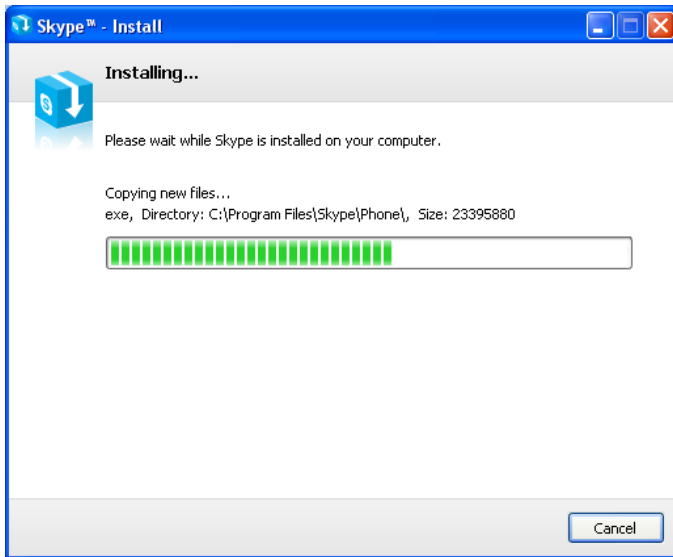
- 1 Read the Skype End User Licence Agreement. If you agree, click **Yes, I have read and accept the Skype End User License Agreement and the Skype Privacy Statement**, and then click **Install** to continue with the Skype Installation.



- 2 (Optional) Place a check in the **Install the free Google Toolbar** checkbox to install the Google toolbar. Click **Next**.



This screen shows the Skype software installation progress, which can take several minutes.



When the installation is complete, click **Start Skype**.



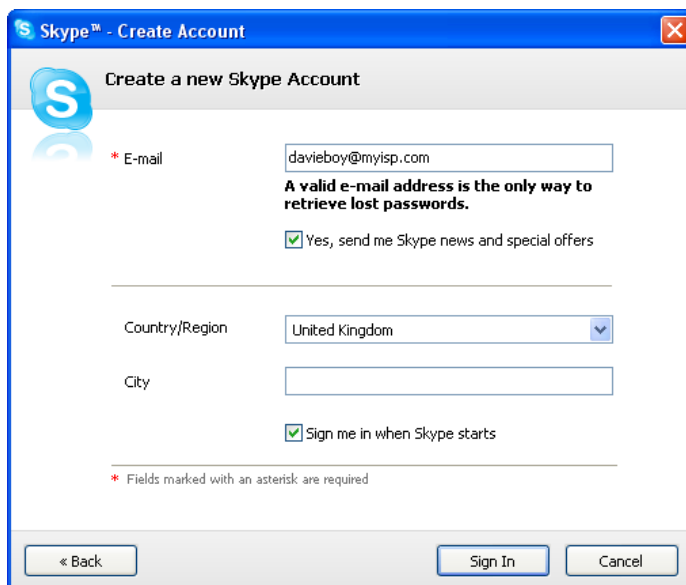
## Registering as a Skype user

After installing Skype, you can see the **Create Account** screen.



The screenshot shows the 'Skype™ - Create Account' window. The title bar is blue with the Skype logo and a close button. The main content area has a light gray background with the Skype logo and the text 'Create a new Skype Account'. There are four input fields, each with an asterisk indicating it is required: 'Full Name' (containing 'Dave'), '\* Choose Skype Name' (containing 'Davieboy', with a note 'Between 6 and 32 characters'), '\* Password' (containing '\*\*\*\*\*', with a note 'Minimum 4 characters'), and '\* Repeat Password' (containing '\*\*\*\*\*'). Below these fields is a checkbox that is checked, with the text 'Yes, I have read and I accept the [Skype End User License Agreement](#) the [Skype Terms of Service](#) and the [Skype Privacy Statement](#)'. At the bottom left, there is a note '\* Fields marked with an asterisk are required'. At the bottom right, there are two buttons: 'Next »' and 'Cancel'.

If you do not have a free Skype user account, enter your details as requested, and then click **Sign In** to continue.



The screenshot shows the 'Skype™ - Create Account' window. The title bar is blue with the Skype logo and a close button. The main content area has a light gray background with the Skype logo and the text 'Create a new Skype Account'. There are three input fields, each with an asterisk indicating it is required: '\* E-mail' (containing 'davieboy@myisp.com', with a note 'A valid e-mail address is the only way to retrieve lost passwords.'), 'Country/Region' (a dropdown menu showing 'United Kingdom'), and 'City' (an empty text box). Below these fields is a checkbox that is checked, with the text 'Yes, send me Skype news and special offers'. At the bottom left, there is a note '\* Fields marked with an asterisk are required'. At the bottom, there are three buttons: '« Back', 'Sign In', and 'Cancel'.

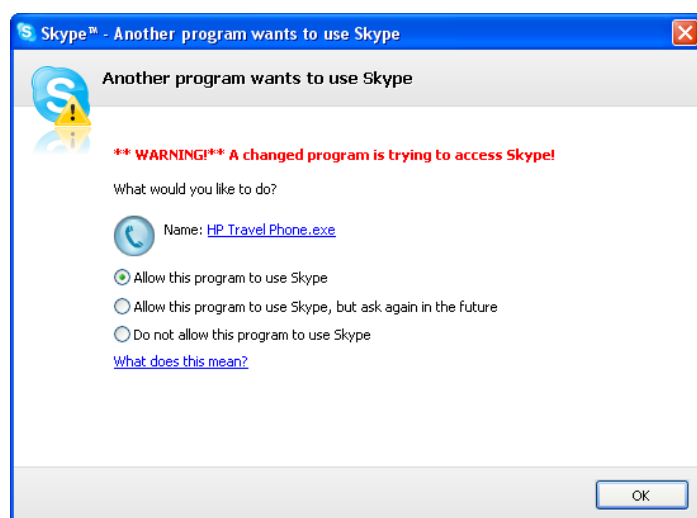
If you have a Skype account, the Create Account screen is not shown. Enter your Skype username and password, and then click **Sign in**.





## Another program wants to use Skype

The first time you sign into Skype with the HP application running, you must authorize the connection access by selecting **Allow this program to use Skype**, and then clicking **OK**.



## Running the Software

This section describes how to start and close the HP Travel Phone software.

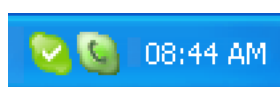
### Starting up

You must start the HP Travel Phone software *before* you start the Skype software. There are two ways to start the HP Travel Phone software: automatically as Windows starts, or manually.





To start the application manually, click the **HP Travel Phone** shortcut icon on your desktop, or click **HP Travel Phone** from the program option under **Program Files** in the **Windows Start Menu**.

To start the application automatically when Windows starts, place a check in the **When Windows starts, autorun HP Travel Phone software** box. See [Configuration](#).

When the HP Travel Phone runs, you see a small icon on the computer SysTray and the Skype icon.



The colour of this icon indicates the current status of HP Travel Phone application.

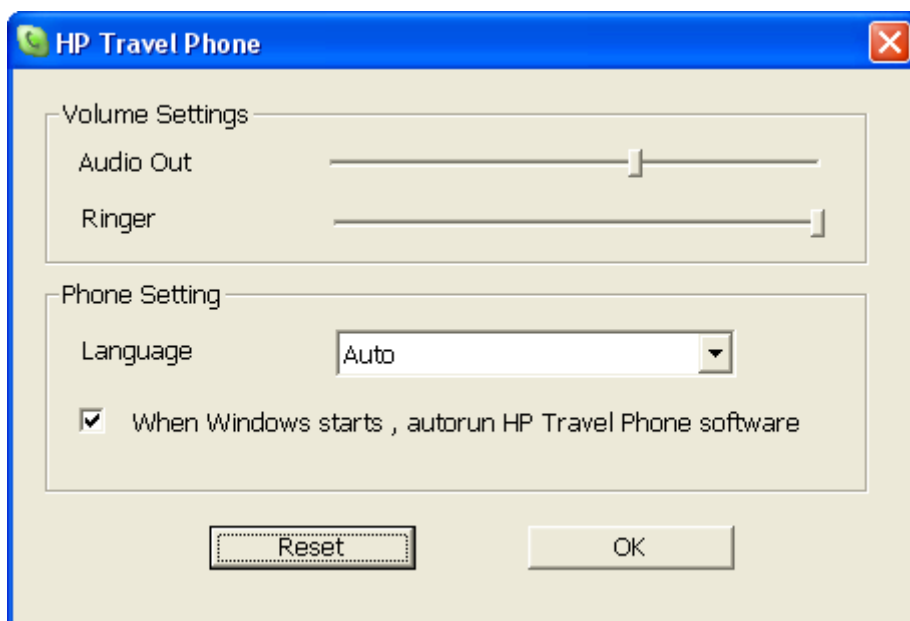
-  No connection with a HP Premium Travel Phone, check that the phone is connected to your USB port.
-  A HP Premium Travel Phone is connected, but Skype could not be connected. This could be because Skype is not running.
-  The HP Premium Travel Phone is off the hook and Skype is connected. This shows if you are on a call.
-  A HP Premium Travel Phone is connected and Skype is connected. This shows if you are not on a call.

### Closing down

To exit the HP Travel Phone application, right-click the **HP Travel Phone** icon on the Windows SysTray, and then click **Exit**.

# Configuration

- 1 Right-click the **HP Travel Phone** icon on the Windows SysTray.
- 2 Click **Setting**.



## Audio Out

Use the slider to adjust the volume for incoming calls. You can also use the volume keys on the phone during a call.

## Ringer

Use the slider to adjust the ringer volume. You can also use the volume keys on the phone when the phone is ringing.

## Language

Select the display language for the HP Premium Travel Phone and HP Travel Phone software list.

## When Windows starts, autorun HP Travel Phone software

Place a check in this check box to automatically start the HP Travel Phone and Skype software when Windows starts. This check box is checked by default and this is the recommended setting. To start these applications manually, remove the check from this check box.

## Reset

Click this button to restore the default settings for the HP Travel Phone software.

- 3 Click **OK** to make the changes.

# Making Calls

## Skype Contacts List

Pick up the premium travel phone and press the **Up/Down** keys to scroll through your Skype Contacts list. Simply press the **Dial** key to make a call to that contact.

## Contacts

Press the **Contacts** key to display your Skype contacts and their status on the phone display. Use the **Up/Down** keys to select a Skype contact and then press the **Dial** key to make the call.

## Dialled Calls List

From the main screen press the **Dial** key to display a list of previously dialled calls. Use the **Up/Down** keys to select the desired number and then press the **Dial** key to make the call.

## Missed Calls List

From the main screen press the **Backspace** key to display a list of missed calls. Use the **Up/Down** keys to select the desired number and then press the **Dial** key to make the call.

## Received Calls List

From the main screen press and hold the **Contacts** key to display a list of received calls. Use the **Up/Down** keys to select the desired number and then press the **Dial** key to make the call.

## Alpha-numeric Dialling

Press the **Contacts** key to open the phonebook and then enter your Skype username using the letter keys on your phone. For example to call "Steve" press the **7** key four times (S) and then press the **8** key (T). Use the **Up/Down** keys to highlight the matching contact and then press the **Dial** key to make the call.

## Speed-Dial Numbers

Set up speed-dial numbers by right-clicking a Skype contact, and then clicking **Set Speed Dial**. Enter the speed-dial number and click **OK**. After you set up speed-dial numbers, lift the premium travel phone, enter the speed-dial number, and then press the **Dial** key to make a call.

## SkypeOut Calls

Press and hold the **0/+** key to enter a +. Dial the country code, followed by the area code (excluding the first zero), followed by the phone number. Use the **Backspace** key to delete any incorrect digits. Press the **Dial** key to make the call.

## Other ways to dial Skype Contacts

Select the Skype contact on screen using the mouse and then click the on-screen **Dial** button.

## Three-way Conference Call

To start a conference call, first establish a conversation with the first contact. Press the **Contacts** key and use the **Up/Down** keys to select the second contact, and then press the **Dial** key. At this point the first contact is put on hold. After the second caller accepts the call, use the **Up/Down** keys to select the first contact, then press and hold the **Dial** key until the Hold icon disappears. The three-way conference call is then established. To end the conference call, press the **End Call** key.

## Hold

Press the **Dial** key during a call to put the call on hold. Press the **Dial** key again to take the call off hold.

## Microphone Mute

Press and hold the **\*** key during a call to mute/unmute the microphone.

## Volume Control

Press the volume **+** and **-** keys to adjust the received volume during a call.

## Receiving Calls

When you receive a Skype call, the HP Premium Travel Phone rings and the LED flashes. The name of the Skype caller appears on the phone display. Lift the premium travel phone and press the **Dial** key to answer the call. Press the **End call** key to reject the call.

## Listening to Voicemail

Visit [www.skype.com](http://www.skype.com) for more information about SkypeIn and Skype Voicemail services.

## Collecting your voicemail messages

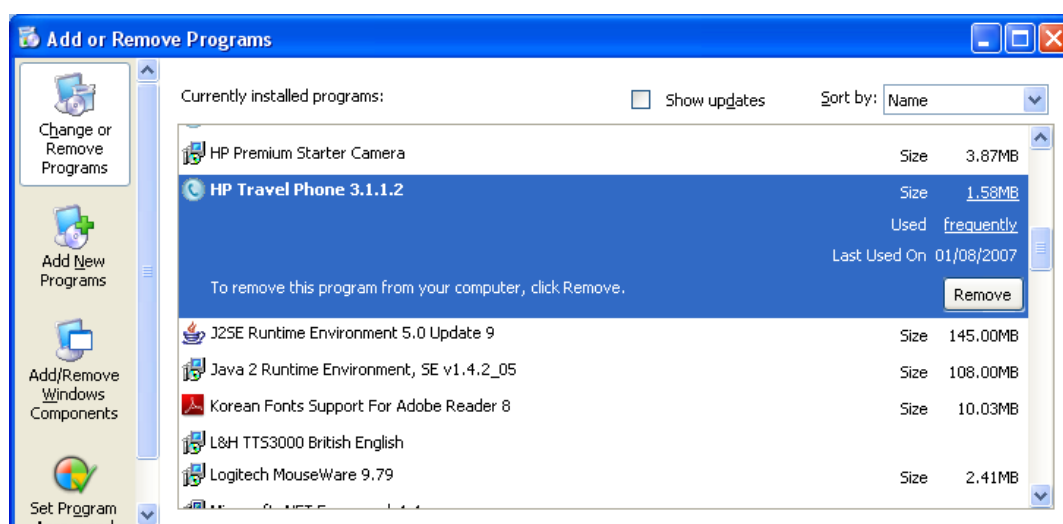
The LED on the side of the premium travel phone lights when a Voicemail message is received. Lift the premium travel phone and then press and hold the **#** (Voicemail) key for two seconds. Press the **Dial** key to listen to the message. Press the **End call** key to stop listening.

## Troubleshooting

This section covers uninstalling the software and general troubleshooting.

### Uninstalling HP software

- 1 Click the **Windows Start Button**® and select **Control Panel**.
- 2 Select **Add/Remove** programs.
- 3 Select **HP Travel Phone** and click **Remove**. Then follow the on-screen instructions.



- 4 After the uninstall finishes, click **Finish**, and restart your computer if prompted.

### Uninstalling Skype software

- 1 Click the **Windows Start Button** and select **Control Panel**.
- 2 Select **Add/Remove** programs.
- 3 Select **Skype** and click **Remove**. Then follow the on-screen instructions.

## Frequently asked questions

### Why does my HP Premium Travel Phone not ring for incoming calls?

See [I can't dial any numbers. What could be wrong?](#)

### I can't dial any numbers. What could be wrong?

There could be several reasons for this:

- If you just installed the HP Travel Phone software, try restarting the computer with the HP Premium Travel Phone attached to the USB port.
- Make sure there are no device conflicts in the computer Device Manager.
- Make sure both the **HP Travel Phone** and **Skype** icons are green on the SysTray.

### How do I dial a '+' sign when making International calls?

Pressing two zeros (00) is equivalent to entering + when dialling international numbers, or if you prefer press and hold the **0** key until the + appears.

### How do I rename a Skype contact?

Right-click the username you want to rename, click **Rename**, enter a new name, and then click **OK**.

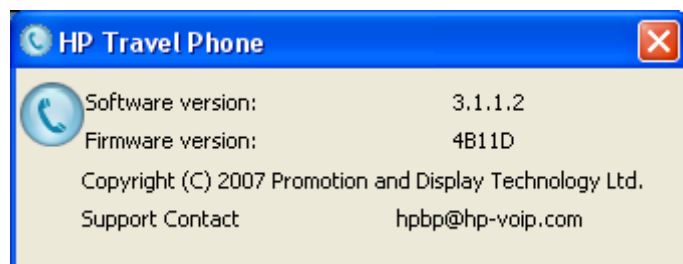
### How do I use Skype?

Visit [www.skype.com](http://www.skype.com) for full details about how to use Skype.

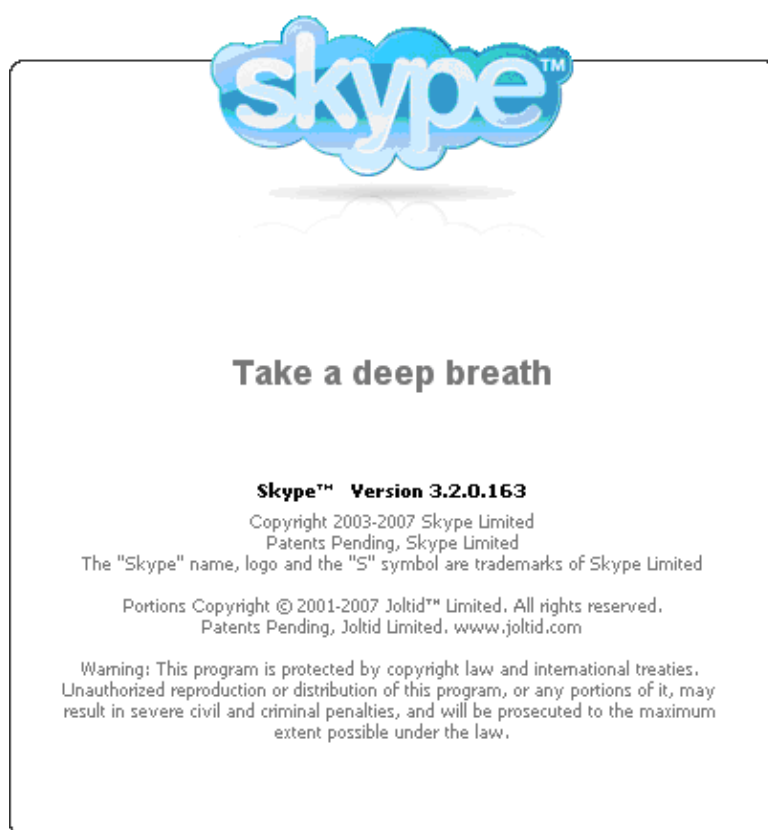
If you have a Skype specific issue, visit [www.skype.com](http://www.skype.com) and navigate to the Skype Forum.

## Identifying software versions

To identify the version of the HP Travel Phone software, right-click the **HP Travel Phone** icon on the SysTray and click **About**.



To identify the version of Skype software, within Skype, click **Help** and then click **About**. To close the window, click the window.



## Software updates

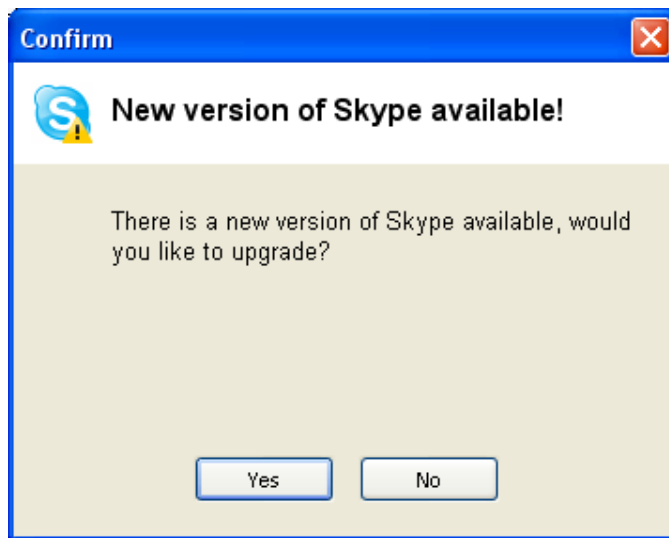
Periodically, software updates become available.

### HP Travel Phone Updates

From time to time software updates may become available on the HP support Web site.

### Skype Updates

If new versions of Skype are available, you are notified automatically, unless you disabled the Automatic updates option within Skype.



Click **Yes** to get the latest Skype update. When updating Skype, your Skype login, contacts, and call logs are not deleted.

You can visit [www.skype.com](http://www.skype.com), if automatic updates are disabled in Skype.

## Contacting support

We can only assist with HP Premium Travel Phone and HP Travel Phone software issues. To contact support directly, email [hpbp@hp-voip.com](mailto:hpbp@hp-voip.com) giving as much detail as possible.

---

**NOTE:** We cannot help with Skype software queries.

---

## Technical Specifications

Cable length	1.6 metres
Supply voltage	5 V DC $\pm$ 5% from PC USB port
Current consumption	In use < 200mA Standby, approx 500uA
Max power consumption	1W
Frequency response	Microphone 100 Hz to 7 kHz Speaker 100 Hz to 5 kHz
Ringer output	>70dBA SPL
Keys	0-9, * and # Scroll up/down Volume up/down Dial End call Microphone mute Voicemail Contacts/Received calls Missed calls/Backspace
LED's	Voicemail Ringer Microphone mute
LCD	128 x 64, backlit
USB	1.1 and 2.0 certified
Compatibility	Skype certified