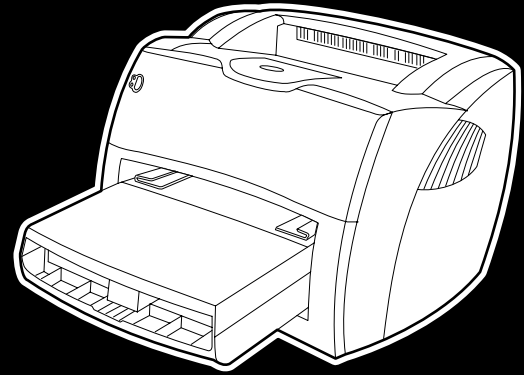




i n v e n t



hp LaserJet
1150 • 1300 • 1300n



use

hp LaserJet 1150 and
hp LaserJet 1300 series printer

user guide

Copyright Information

Copyright Hewlett-Packard Company 2003

All Rights Reserved. Reproduction, adaptation, or translation without prior written permission is prohibited, except as allowed under the copyright laws.

A user of the Hewlett-Packard printer associated with this user guide is granted a license to: a) print hard copies of this user guide for PERSONAL, INTERNAL or COMPANY use subject to the restriction not to sell, re-sell or otherwise distribute the hard copies; and b) place an electronic copy of this user guide on a network server, provided access to the electronic copy is limited to PERSONAL, INTERNAL users of the Hewlett-Packard printer associated with this user guide.

Part number: Q1334-90909

First Edition: April 2003

Warranty

The information contained in this document is subject to change without notice.

Hewlett-Packard makes no warranty of any kind with respect to this information.

HEWLETT-PACKARD SPECIFICALLY
DISCLAIMS THE IMPLIED WARRANTY
OF MERCHANTABILITY AND FITNESS FOR
A PARTICULAR PURPOSE.

Hewlett-Packard shall not be liable for any direct, indirect, incidental, consequential, or other damage alleged in connection with the furnishing or use of this information.

Trademark Credits

Microsoft®, Windows®, and Windows NT® are U.S. registered trademarks of Microsoft Corporation.

Energy Star® and the Energy Star logo® are U.S. registered marks of the United States Environmental Protection Agency.

Netscape is a U.S. trademark of Netscape Communications Corporation.

UNIX® is a registered trademark of The Open Group.

All other products mentioned herein may be trademarks of their respective companies.

Contents

1 Printer basics

Quick access to more information	2
WWW links for drivers, software, and support	2
User guide links	2
Where to look for more information	2
Printer configurations	3
hp LaserJet 1150	3
hp LaserJet 1300	4
hp LaserJet 1300n	4
Printer features	5
Print with excellent quality	5
Save time	5
Save money	5
Create professional documents	5
Walk around	6
hp LaserJet 1150 printer and hp LaserJet 1300 series printer	6
Printer control panel	8
Media paths	9
Main input tray	9
Priority input tray	9
Printer media guides	9
Straight-through output path	10
Output bin	10
Print cartridge access	11
Print cartridge door	11
Printer software	12
Supported operating systems	12
Installing printer software	12
Printer properties (driver)	13
Print setting priorities	14
Printer properties online help	14
Software for Windows	15
Software for Macintosh computers	17
hp LaserJet 1150 printer	17
hp LaserJet 1300 series printer	18
Accessing the print driver (Mac OS 9.x)	18
PostScript Printer Description files (PPDs)	18
Software for network installations only	19
Printer connections	20
USB connections	20
Parallel connections	21
Network connections	22
Wireless connections	22

2 Media

Choosing paper and other media	24
Media to avoid	25
Media that may damage the printer	25
Optimizing print quality for media types	26
Loading media into the input trays	27
Main input tray	27
Priority input tray	27
Specific types of media	27
Printing on transparencies or labels	28
Printing on envelopes	29
Printing one envelope	29
Printing multiple envelopes	31
Printing on letterhead and preprinted forms	33
To print letterhead or preprinted forms	33
Printing on custom-sized media and cardstock	34

3 Printing tasks

Manual feed	36
Printing watermarks	37
Accessing the watermark feature	37
Printing multiple pages on a single sheet of paper (N-up printing)	38
Accessing the multiple pages per sheet feature	38
Printing on both sides of the paper (manual duplexing)	39
Manual duplex using the top output bin	39
Manual duplex on heavy media or card stock	41
Printing booklets	42
Canceling a print job	44
Understanding print quality settings	45
Using EconoMode (Saves toner)	46

4 Maintenance

Using HP print cartridges	48
HP policy on non-HP print cartridges	48
Storing print cartridges	49
Print cartridge life expectancy	50
Saving toner	51
Redistributing toner	52
Changing the print cartridge	53
Cleaning the printer	55
Cleaning the print cartridge area	55
Cleaning the printer media path	56

5 Managing the printer

Printer information pages	58
Demo page	58
Configuration page	58
Using the hp toolbox	59
Supported operating systems	59
Supported browsers	59
To view hp toolbox	59
hp toolbox sections	60
Other links	60
Status tab	61
Troubleshooting tab	61

Alerts tab	62
Documentation tab	62
Advanced Printer Settings window	63
Network window	63
Using the embedded Web server	64
To open the embedded Web server	64
Information tab	65
Settings tab	65
Networking tab	66
Other links	66
Wireless printing	67
IEEE 802.11b standard	67
Bluetooth	67

6 Problemsolving

Finding the solution	70
Status light patterns	72
Common Macintosh problems	74
Selecting an Alternate PostScript Printer Description (PPD) for the hp LaserJet 1300 series printer	78
Renaming the Printer (hp LaserJet 1300 series only)	78
Troubleshooting PostScript (PS) errors	79
Paper handling problems	80
Printed page is different than what appeared on screen	82
Printer software problems	84
Improving print quality	85
Light print or faded	85
Toner specks	85
Dropouts	85
Vertical lines	85
Gray background	86
Toner smear	86
Loose toner	86
Vertical repetitive defects	86
Misformed characters	87
Page skew	87
Curl or wave	87
Wrinkles or creases	87
Toner scatter outline	88
Clearing jams	89
Removing a jammed page	90
Changing the pickup roller	92
Cleaning the pickup roller	95
Changing the printer separation pad	96

Appendix A Printer specifications

Specifications	100
FCC compliance	104
Environmental product stewardship program	105
Protecting the environment	105
Material safety data sheet	107
Regulatory statements	108
Declaration of Conformity	108
Declaration of Conformity	109
Laser safety statement	110
Canadian DOC regulations	110

Korean EMI statement	110
VCCI statement (Japan).	110
Laser statement for Finland	111

Appendix B Media specifications

Printer media specifications	114
Supported media sizes	115
Guidelines for using media	116
Paper	116
Labels.	117
Transparencies	117
Envelopes	118
Card stock and heavy media	119

Appendix C Warranty and licensing

Hewlett-Packard software license agreement	122
Hewlett-Packard limited warranty statement	123
Limited warranty for print cartridge life	124
Hardware service	125
Extended warranty	126
Guidelines for repacking the printer	127
How to contact HP	128

Appendix D Ordering supplies and accessories

Ordering supplies and accessories	129
10/100 networking and wireless print servers	131

Appendix E Network configuration

Installing a shared printer on Windows 98 and Millennium	133
Installing a shared printer on Windows 2000	134
Installing a shared printer on Windows XP	135

Appendix F Memory

Installing a memory DIMM (1300 series only)	138
Testing the DIMM installation	140
Removing a DIMM	141

Appendix G Working with the print server

Installing the print server	144
Printing a configuration page	144
Using the print server's embedded Web server	145
Changing the IP address	145
Troubleshooting the print server.	146
Installed print server stops working	146
Print server status light.	147
Restoring the factory default settings	148

1 Printer basics

This chapter provides information on the following topics:

- [Quick access to more information](#)
- [Printer configurations](#)
- [Printer features](#)
- [Walk around](#)
- [Printer control panel](#)
- [Media paths](#)
- [Print cartridge access](#)
- [Printer software](#)
- [Printer connections](#)

Quick access to more information

WWW links for drivers, software, and support

If you need to contact HP for service or support, use one of the following links:

hp LaserJet 1150 printer

- In the United States, see <http://www.hp.com/support/lj1150>
- In other countries/regions, see <http://www.hp.com>

hp LaserJet 1300 series printer

- In the United States, see <http://www.hp.com/support/lj1300>
- In other countries/regions, see <http://www.hp.com>

User guide links

- [Walk around](#) (location of printer components)
- [Changing the print cartridge](#)
- [Problemsolving](#)
- [Ordering supplies and accessories](#)
- [Index](#)

Where to look for more information

- **CD user guide:** Detailed information on using and troubleshooting the printer. Available on the CD-ROM that came with the printer.
- **Online Help:** Information on printer options that are available from within printer drivers. To view a Help file, access the online Help through the printer driver.
- **HTML (online) user guide:** Detailed information on using and troubleshooting the printer. Available at <http://www.hp.com/support/lj1150> or <http://www.hp.com/support/lj1300>. Once connected, select **Manuals**.

Printer configurations

Below are the standard configurations for the HP LaserJet 1150 and 1300 series printers.

hp LaserJet 1150

- 18 ppm for letter-size paper, 17 ppm for A4-size paper
- First page out in less than 10 seconds
- 600 x 2 dpi (FastRes 1200) resolution
- 250-sheet enclosed input tray
- 10-sheet priority input tray
- 8 MB RAM
- 2500-page print cartridge
- PCL 5e
- Host-based printing
- USB
- 1284-B parallel port
- Windows 98, Me, 2000, XP
- Mac OS 9.x
- Mac OS X v10.1 and v10.2
- Network and wireless printing options
- Power switch
- HP toolbox provides printer status information, troubleshooting information, and printer configuration information
- 26 PCL fonts

hp LaserJet 1300

- 20 ppm for letter-size paper, 19 ppm for A4-size paper
- First page out in less than 10 seconds
- 1200 dpi (ProRes 1200) resolution
- 250-sheet enclosed input tray
- 10-sheet priority feed tray
- Optional additional 250-sheet input tray
- 16 MB RAM
- Memory is upgradeable to 80 MB
- 4000- or 2500-page print cartridge
- PCL 6 and PCL 5e and PostScript® 2 emulation
- USB
- 1284-B parallel port (through LIO connectivity card)
- Windows 98, Me, 2000, XP
- Mac OS 9.x
- Mac OS X v10.1 and v10.2
- Internal LIO network and wireless printing options
- Power switch
- 45 PCL fonts
- 35 PS fonts

hp LaserJet 1300n

The HP LaserJet 1300n printer includes all the features of the 1300 model, plus an HP Jetdirect print server network card.

Printer features

Congratulations on the purchase of your new product. The HP LaserJet 1150 and HP LaserJet 1300 series printers provide the following benefits.

Print with excellent quality

- Print 1200 dots per inch.
- For the HP LaserJet 1150 printer, host-based and PCL 5e drivers are available.
- For the HP LaserJet 1300 series printer, PCL 5e, PCL 6, and PS drivers are available.
- The printer automatically determines and switches to the appropriate language for the print job.

Save time

- Fast printing at up to 18 pages per minute (ppm) for the HP LaserJet 1150 printer and up to 20 ppm for the HP LaserJet 1300 series printer.
- No waiting. The first page is out in less than 10 seconds.

Save money

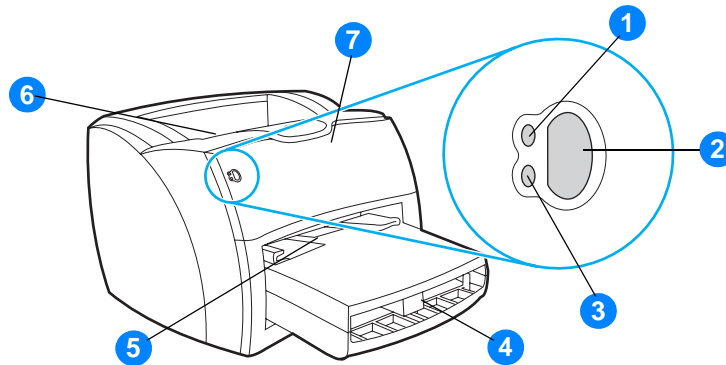
- Use EconoMode to save toner.
- Print multiple pages on a single sheet of paper (N-up printing).

Create professional documents

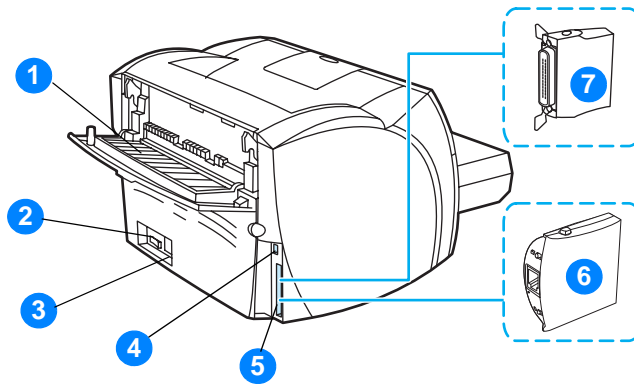
- Use watermarks, such as *Confidential*, to protect your documents.
- Print booklets. You can use this feature to easily print the pages in the order required to create cards or books. Once printed, all you have to do is fold and staple the pages.
- Print the first page on different media than the rest of the pages.

Walk around

hp LaserJet 1150 printer and hp LaserJet 1300 series printer



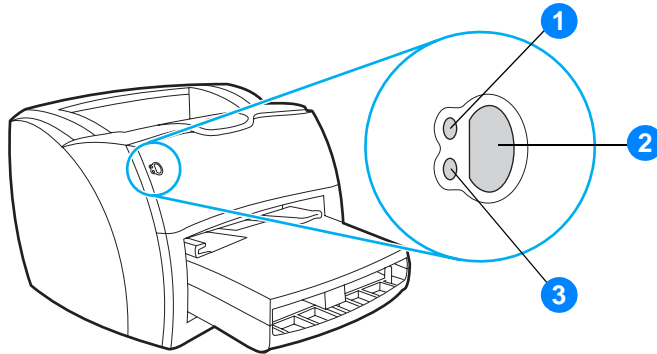
- 1 Ready light
- 2 Go button and light
- 3 Attention light
- 4 Main input tray
- 5 Priority input tray
- 6 Output bin
- 7 Print cartridge door



- 1 Straight-through output door
- 2 On/off switch
- 3 Power receptacle
- 4 USB port
- 5 Parallel port (HP LaserJet 1150 printer)
LIO connectivity slot (HP LaserJet 1300 series)
- 6 HP Jetdirect print server (HP LaserJet 1300n printer only)
- 7 Parallel LIO adaptor (HP LaserJet 1300 series only)

Printer control panel

The printer control panel is comprised of two lights and one lighted button. These lights produce patterns that identify your printer's status.



- 1 **Ready light:** Indicates that the printer is ready to print.
- 2 **Go button and light:** To print a demo page or to continue printing while in manual feed mode, press and release the **Go** button. To print a configuration page, press and hold the **Go** button for 5 seconds.
- 3 **Attention light:** Indicates printer media input tray is empty, print cartridge door is open, print cartridge is missing, or other errors.

Note

See [Status light patterns](#) for a description of the light patterns.

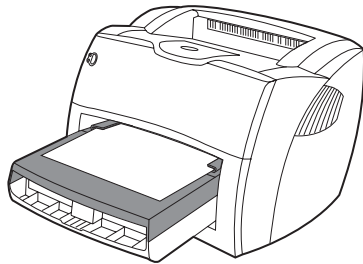
Media paths

Main input tray

The enclosed main input tray, located in front of the printer, holds up to 250 sheets of 20 lb paper, multiple envelopes, or other media.

Priority input tray

You should use the priority input tray when feeding up to 10 sheets of 20 lb paper or when printing single envelopes, postcards, labels, or transparencies. You can also use the priority input tray to print the first page on different media than the rest of the document.



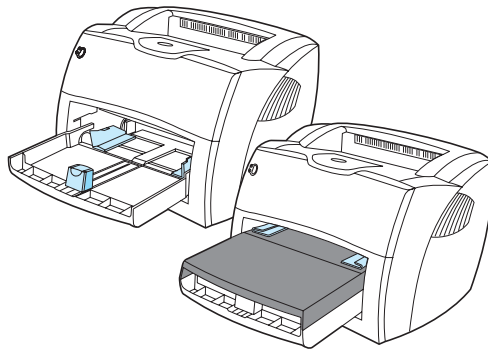
Note

The printer automatically prints from the priority input tray before printing from the main input tray.

See [Media](#) for more information about media types.

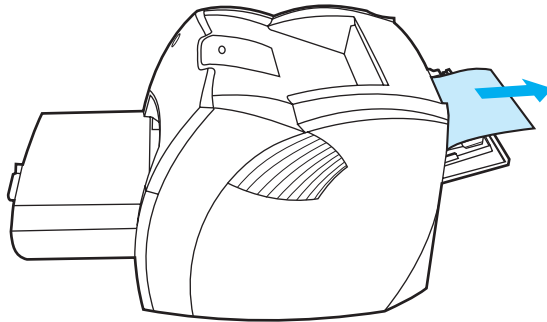
Printer media guides

Both input trays have side media guides. The main input tray also has a rear media guide. Media guides ensure that the media is correctly fed into the printer and that the print is not skewed (crooked on the media). When loading media, adjust the media guides to match the width and length of the media that you are using.



Straight-through output path

The straight-through output path is useful when you are printing envelopes, transparencies, heavy media, or any media that tends to curl when printed. Printed media exits in reverse order when the straight-through output door is open.

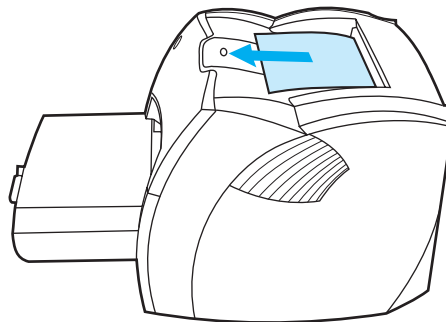


Note

Printed media does not stack when you use the straight-through output path. The media drops to the surface below unless you remove each sheet as it exits the printer.

Output bin

The output bin is located on the top of the printer. Printed media is collected here in the correct sequence when the straight-through output door is closed. Use the output bin when printing normal and large, collated documents.



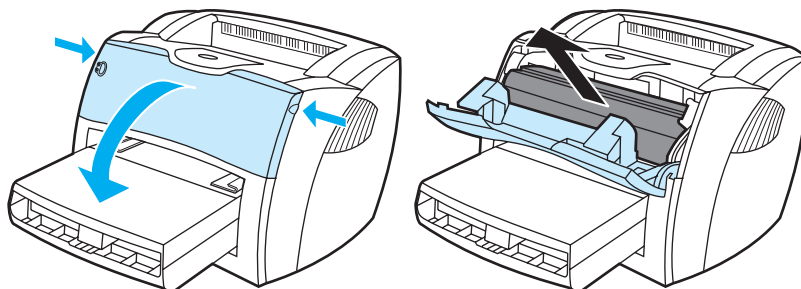
Print cartridge access

Print cartridge door

The print cartridge door is located on the front of the printer. You must open the print cartridge door to access the print cartridge, clear jams, and clean the printer. To open the print cartridge door, firmly grasp the left and right sides and pull the print cartridge door toward you.

Note

You will feel some resistance when opening the print cartridge door. Opening the print cartridge door conveniently lifts the print cartridge for easy removal.



Supported operating systems

For easy printer setup and access to the full range of printer features, HP strongly recommends that you install the software provided. Not all software is available in all languages. Install the software before setting up the printer. See the Readme for the latest software information.

The most recent drivers, additional drivers, and other software are available from the Internet and other sources.

The printer comes with software for the following operating systems:

- Windows 98
- Windows Me
- Windows 2000
- Windows XP (32-bit)
- Mac OS 9.x
- Mac OS X v10.1 and v10.2 (Apple encourages OS X v10.0 users to upgrade to v10.1)

Installing printer software

To install printer software for Windows 95 and Windows NT 4.0

To install the printer software for Windows 95 and Windows NT 4.0, you must use the Add Printer Wizard.

- 1 Click **Start**, and then point to **Settings**.
- 2 Click **Printers**.
- 3 Double-click **Add Printer**.
- 4 Select the port that the printer is connected to, and click **Next**.
- 5 Click **Have Disk**. Click **Browse**.
- 6 On the CD-ROM, browse to the driver you want to install as follows:
 - a Select your language from the directory list, and double-click.
 - b Select **drivers** from the directory list, and double-click.
 - c Select your operating system from the directory list, and double-click.
 - d Select the driver from the directory list, and double-click.
 - e Click **OK** to select the INF file.
 - f Click the HP LaserJet 1150 or HP LaserJet 1300 series printer, and click **OK** to begin the installation.
- 7 Follow the on-screen instructions to complete the software installation.

To install printer software for all other operating systems

Insert the software CD that came with the printer into the computer CD-ROM drive. Follow the on-screen installation instructions.

Note

If the Welcome screen does not open, click **Start** on the Windows task bar, click **Run**, type **Z:\setup** (where **Z** is your CD drive letter), and click **OK**.

Printer properties (driver)

Printer properties control the printer. You can change the default settings, such as media size and type, printing multiple pages on a single sheet of media (N-up printing), resolution, and watermarks. You can access the printer properties in the following ways:

- Through the software application that you are using to print. This only changes the settings for the current software application.
- Through the Windows® operating system. This changes the default settings for all future print jobs.

Note

Because many software applications use a different method of accessing the printer properties, the following section describes the most common methods used in Windows 98, 2000, Millennium, and Windows XP.

To only change the settings for the current software application

Note

Although the steps can vary between software applications, this is the most common method.

- 1 From the **File** menu in the software application, click **Print**.
- 2 On the **Print** dialog, click **Properties**.
- 3 Change the settings, and click **OK**.

To change the default settings for all future print jobs in Windows 98, 2000, and Millennium

- 1 In the Windows system tray, click **Start**, select **Settings**, and click **Printers**.
- 2 Right-click the HP LaserJet 1150 or HP LaserJet 1300 series printer icon.
- 3 Click **Properties**, (in Windows 2000, you can also click **Printing Preferences**).
- 4 Change the settings, and click **OK**.

Note

In Windows 2000, many of these features are available from the **Printing Preferences** menu.

To change the default settings for all future print jobs in Windows XP

- 1 In the Windows system tray, click **Start**, and click **Control Panel**.
- 2 Double-click **Printers and Other Hardware**.
- 3 Click **Printers and Faxes**.
- 4 Right-click the HP LaserJet 1150 or HP LaserJet 1300 series printer icon.
- 5 Click **Properties**, or click **Printing Preferences**.
- 6 Change the settings, and click **OK**.

Print setting priorities

There are three ways to change print settings for this printer: in the software application, in the printer driver, and in the HP toolbox. For the HP LaserJet 1300 series printer, you can also change print settings through the embedded Web server. Changes made to print settings are prioritized according to where the changes are made, as follows:

- Changes made in the software application override settings changed anywhere else. Within a software application, changes made in the Page Setup dialog box override changes made in the Print dialog box.
- Changes made in the printer driver (Printer Properties dialog box) override settings in the HP toolbox. Changes made in the printer driver do not override settings in the software application.
- Changes made in the HP toolbox and the embedded Web server have the lowest priority.

If a particular print setting can be changed in more than one of the ways listed above, use the method that has the highest priority.

Printer properties online help

The printer properties (driver) online help includes specific information about the functions in the printer properties. This online help guides you through the process of changing your printer's default settings. For some drivers, online Help gives instructions on using context-sensitive Help. Context-sensitive Help describes the options for the driver feature you are currently accessing.

To access the printer properties online help

- 1 From the software application, click **File**, and then click **Print**.
- 2 Click **Properties**, and then click **Help**.

Software for Windows

When you install the software for Windows, you can directly connect the printer to a computer using a USB cable, parallel cable, or using wireless technology. For the HP LaserJet 1300n printer, you can connect the printer to the network using an HP Jetdirect print server card.

The following software is available to all users of the printer, whether you connected the printer directly to a computer using a USB cable, parallel cable, wireless technology, or whether you connected the printer to the network using an HP Jetdirect print server card.

Printer drivers

A printer driver is the software component that provides access to printer features and provides the means for the computer to communicate with the printer. Choose a printer driver based on the way you use the printer.

- Use the host-based printer driver to optimize performance. (HP LaserJet 1150 printer only).
- Use the PCL 5e printer driver if you need print results to look consistent with those from older HP LaserJet printers. Certain features are not available in this printer driver. (Do not use the PCL 5e driver for this printer with older printers.)
- Use the PCL 6 printer driver to take full advantage of the printer features. Unless complete backward compatibility with previous PCL drivers or older printers is necessary, the PCL 6 driver is recommended (HP LaserJet 1300 series only).
- Use the PS printer driver for compatibility with PostScript® needs. Certain printer features are not available in this printer driver (HP LaserJet 1300 series only).

The printer automatically switches between PS and PCL printer languages depending on the driver you have selected.

Available printer drivers

The following printer drivers are included with the printer.

Available printer drivers

HP LaserJet 1150 printer	HP LaserJet 1300 series printer
<ul style="list-style-type: none">● host-based● PCL 5e	<ul style="list-style-type: none">● PCL 5e● PCL 6● PS

hp toolbox

You can view the HP toolbox when the printer is directly connected to your computer or when it is connected to a network. You must have performed a complete software installation to use the HP toolbox.

The HP toolbox is a Web application that you can use for the following tasks:

- Check the printer status.
- Configure the printer settings.
- View troubleshooting information.
- View online documentation.

See [Using the hp toolbox](#) for more information.

Embedded Web server (hp LaserJet 1300 series only)

The embedded Web server is available for HP LaserJet 1300 series printers with LIO network connections.

With the embedded Web server, you can gain access to the printer settings and information by typing an IP address or hostname of the printer in a Web browser (such as Netscape Navigator™ or Microsoft Internet Explorer) on any computer. You can use the embedded Web server to configure the printer, view status information, and obtain troubleshooting information.

The embedded Web server works with the following supported web browsers:

- Internet Explorer 5.0 (and later)
- Netscape Navigator 4.75 (and later)

See [Using the embedded Web server](#) for more information.

Software for Macintosh computers

hp LaserJet 1150 printer

Accessing the print driver (Mac OS 9.x)

- 1 From the **Apple** menu, select the **Chooser**.
- 2 Click the **HP LaserJet** icon in the left side of the Chooser dialog box.
- 3 Select either **USB** or **AppleTalk**, depending on how the computer and printer are connected.

Note

If you are using AppleTalk, you might also need to select the correct Zone from the second menu list.

- 4 Click the HP LaserJet 1150 printer name in the right side of the Chooser dialog box.
- 5 Do one of the following, depending on how the computer and the printer are connected:
 - **USB**: Go to step 6.
 - **AppleTalk**: Click **Setup**, and then select the correct printer type.
- 6 Close the Chooser.

Accessing the print driver (Mac OS X v10.1)

- 1 Click the hard drive icon on the desktop.
- 2 Click **Applications**, and then click **Utilities**.
- 3 Click **Print Center**.
- 4 Click **Add Printer**. The Add Printer List dialog box appears.
- 5 Select **USB** or **AppleTalk** from the top menu.

Note

If you are using AppleTalk, you might also need to select the correct Zone from the second menu list.

- 6 Select the printer name from the printer list.
- 7 Click **Add**.

Accessing the print driver (Mac OS X v10.2)

Follow the steps for v10.1 above. In step 5, select **Directory Services** to use the "Rendezvous" feature.

hp LaserJet 1300 series printer

Accessing the print driver (Mac OS 9.x)

- 1 Click the hard drive icon on the desktop.
- 2 Click **Applications**, and then click **Utilities**.
- 3 Launch the Desktop Printer utility.
- 4 Click **Printer (USB)**.
- 5 In the Printer USB section of the dialog box, click **Change**.
- 6 Select the HP LaserJet 1300 printer.
- 7 Click **Auto Setup**.
- 8 Click **Create** at the bottom of the Window.
- 9 Click **Save**.

Accessing the print driver (Mac OS X v10.1)

- 1 Click the hard drive icon on the desktop.
- 2 Click **Applications**, and then click **Utilities**.
- 3 Click **Print Center**.
- 4 Click **Add Printer**. The Add Printer List dialog box appears.
- 5 Select **USB** or **AppleTalk** from the top menu.

Note

If you are using AppleTalk, you might also need to select the correct Zone from the second menu list.

- 6 Select the printer name from the printer list.
- 7 Click **Add**.

Accessing the print driver (Mac OS X v10.2)

Follow the steps for v10.1 above. In step 5, select **Directory Services** to use the “Rendezvous” feature.

PostScript Printer Description files (PPDs)

PPDs, in combination with the Apple printer driver, access the printer features and allow the computer to communicate with the printer. An installation program for the PPDs is provided on the HP LaserJet 1300 series printer CD.

Software for network installations only

This software is available only when the printer is connected to a network.

hp Web Jetadmin

HP Web Jetadmin is intended for printer management in commercial and enterprise networks. While the embedded Web server is used to manage a single printer, HP Web Jetadmin is used to manage groups of printers and other devices. Download this software from the HP website at <http://www.hp.com/go/webjetadmin>. The HP Web Jetadmin website provides HP Web Jetadmin software in many languages.

HP Web Jetadmin is available only if the printer is connected to an IP-based network. This browser-based software can be installed on one of the following supported platforms:

- Microsoft Windows NT 4.0, XP, or 2000
- HP-UX
- Sun Solaris
- Red Hat Linux
- SuSE Linux

Starting hp Web Jetadmin

Once you install the HP Web Jetadmin software, you can start it in a supported Web browser on any computer by typing one of the following URLs:

- `http://server.domain:port/`
where “server.domain” is the server hostname and “port” is the port number that you entered during installation. (The default port is 8000.) This information is available in the url.txt file, which is stored in the folder where HP Web Jetadmin is installed.
- `http://ipaddress:port/`
where “ipaddress” is the IP address of the computer where HP Web Jetadmin is located.

For settings that appear in both the printer driver and HP Web Jetadmin, changes made in the printer driver override changes made in HP Web Jetadmin.

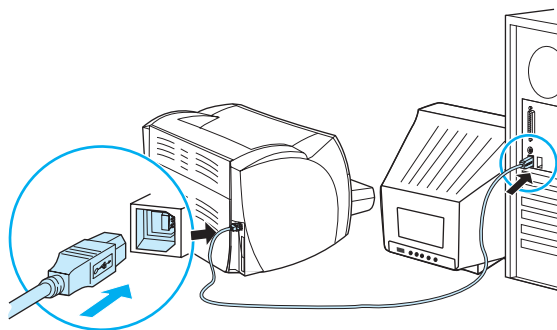
Printer connections

USB connections

All HP LaserJet 1150 and HP LaserJet 1300 series printer models support USB connections. The USB port is on the back of the printer.

Connecting the USB cable

Plug the USB cable into the printer. Plug the other end of the USB cable into the computer.

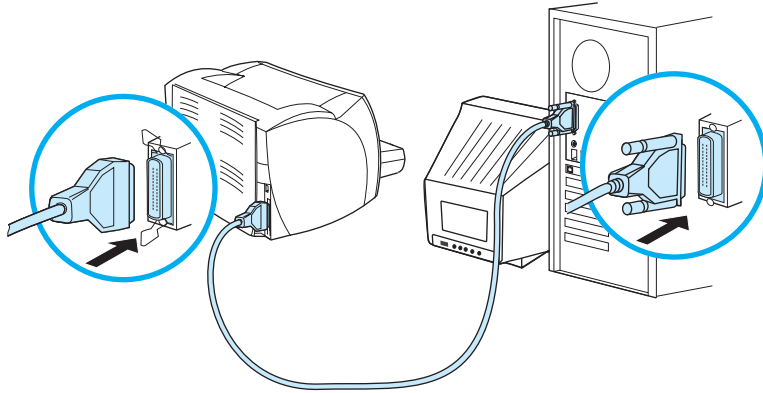


Parallel connections

All HP LaserJet 1150 and HP LaserJet 1300 series printer models support parallel connections. For the HP LaserJet 1300 series printer, the parallel port is in a low-cost input/output (LIO) adaptor that connects to the back of the printer. Use an IEEE 1284-compliant parallel cable.

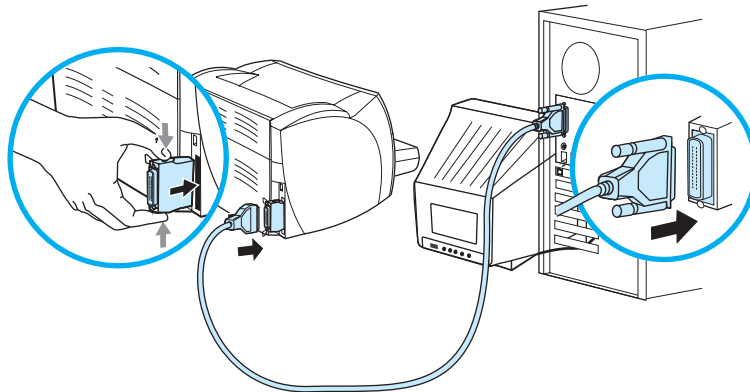
Connecting the parallel cable for the hp LaserJet 1150 printer

Connect the parallel cable to the printer. Connect the other end of the parallel cable to the computer.



Connecting the parallel cable for the hp LaserJet 1300 series printer

- 1 Insert the parallel LIO adaptor into the LIO connectivity slot on the back of the printer.
- 2 Connect the parallel cable to the adaptor. Connect the other end of the parallel cable to the computer.

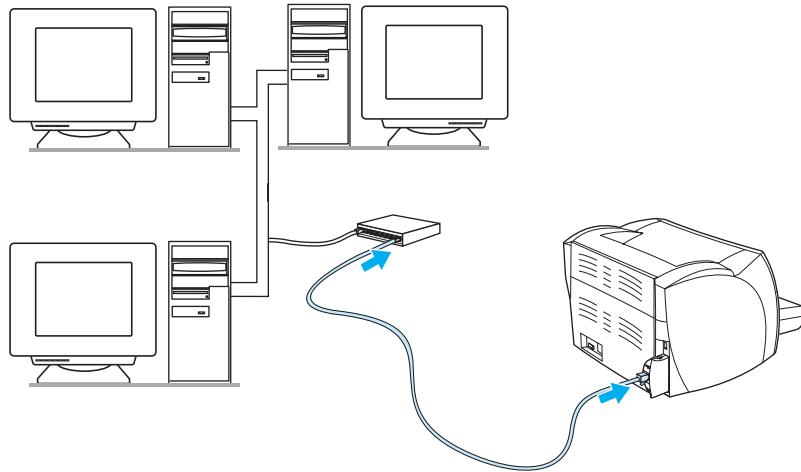


Network connections

The HP LaserJet 1300n printer also supports network connections with an HP Jetdirect print server. This print server is optional for the HP LaserJet 1300 printer. To order the print server, see [Ordering supplies and accessories](#).

Connecting to the network

- 1 Insert the HP Jetdirect print server into the LIO connectivity slot on the back of the printer.
- 2 Connect one end of a network cable to the print server, and connect the other end to the network. Be sure to install the printer driver on all computers that connect to the network.



Wireless connections

The HP LaserJet 1150 and HP LaserJet 1300 series printer models also support the IEEE 802.11b standard for wireless networking and Bluetooth wireless connectivity options. The available HP Jetdirect wireless print servers and HP Bluetooth printer adaptors attach on the back of the printer to either the USB port, the parallel port, or the LIO connectivity slot (for the HP LaserJet 1300 series).

For a complete list of available HP Jetdirect wireless print servers and HP Bluetooth adaptors, see [Ordering supplies and accessories](#).

For more information about wireless printing, see [Wireless printing](#).

2 Media

This chapter provides information on the following topics:

- [Choosing paper and other media](#)
- [Optimizing print quality for media types](#)
- [Loading media into the input trays](#)
- [Printing on transparencies or labels](#)
- [Printing on envelopes](#)
- [Printing on letterhead and preprinted forms](#)
- [Printing on custom-sized media and cardstock](#)

Choosing paper and other media

HP LaserJet printers produce excellent print quality documents. You can print on a variety of media, such as paper (including up to 100% recycled fiber content paper), envelopes, labels, transparencies, and custom-sized media. The following are the supported media sizes:

- Minimum: 76 by 127 mm (3 by 5 in.)
- Maximum: 216 by 356 mm (8.5 by 14 in)

Properties such as weight, grain, and moisture content are important factors that affect printer performance and quality. To achieve the best possible print quality, only use high-quality media designed for laser printers. See [Printer media specifications](#) for detailed paper and media specifications.

Note

Always test a sample of the media before you purchase large quantities. Your media supplier should understand the requirements specified in the *HP LaserJet printer family print media guide* (HP part number 5963-7863). See [Printer media specifications](#) for more information.

Media to avoid

The HP LaserJet 1150 and 1300 series printers can handle many types of media. Use of media outside the printer's specifications will cause a loss of print quality and increase the chance of paper jams occurring.

- Do not use paper that is too rough.
- Do not use paper with cutouts or perforations other than standard 3-hole punched paper.
- Do not use multipart forms.
- Do not use paper with a watermark if you are printing solid patterns.

Media that may damage the printer

In rare circumstances media can damage the printer. The following media must be avoided to prevent possible damage:

- Do not use media with staples attached.
- Do not use transparencies designed for inkjet printers or other low temperature printers. Use only transparencies that are specified for use with HP LaserJet printers.
- Do not use photo paper intended for inkjet printers.
- Do not use paper that is embossed or coated and is not designed for the temperatures of the printer's image fuser. Select media that can tolerate temperatures of 200° C (392° F) for 0.1 second. HP produces a selection of media that is designed for the HP LaserJet 1150 and 1300 series printers.
- Do not use letterhead paper with low temperature dyes or thermography. Preprinted forms or letterhead must use inks that can tolerate temperatures of 200° C (392° F) for 0.1 second.
- Do not use any media that produces hazardous emissions, or that melts, offsets, or discolors when exposed to 200° C (392° F) for 0.1 second.

To order HP LaserJet printing supplies, go to <http://www.hp.com/go/ljsupplies> in the U.S. or to <http://www.hp.com/ghp/buyonline.html> worldwide.

Optimizing print quality for media types

Media type settings control the temperature of your printer's fuser. You can change the settings for the media that you are using to optimize the print quality.

You can access the optimizing feature from the **Paper** tab in your printer driver or from HP Toolbox.

Printing speeds are automatically reduced when printing special-sized media.

Loading media into the input trays

Main input tray

The main input tray holds up to 250 pages of 20 lb paper or fewer pages of heavier media (25 mm or less stack). Load media with the top forward and the side to be printed facing up. To prevent jams and skewing, always adjust the side and rear media guides.

Priority input tray

The priority input tray holds up to 10 pages of 20 lb paper or one envelope, transparency, or card. Load media with the top forward and the side to be printed facing up. To prevent jams and skewing, always adjust the side media guides.

CAUTION

If you try to print on media that is wrinkled, folded, or damaged in any way, a jam might occur. See [Printer media specifications](#) for more information.

Note

When you add new media, make sure that you remove all of the media from the input tray and straighten the stack of new media. This helps prevent multiple sheets of media from feeding through the printer at one time, reducing media jams.

Specific types of media

- **Transparencies and labels:** Load transparencies and labels with the top forward and the side to be printed facing up. See [Printing on transparencies or labels](#) for more information.
- **Envelopes:** Load envelopes with the narrow, stamp side forward and the side to be printed facing up. See [Printing on envelopes](#) for more information.
- **Letterhead or preprinted forms:** Load with the top forward and the side to be printed facing up. See [Printing on letterhead and preprinted forms](#) for more information.
- **Cards and custom-sized media:** Load with the narrow side forward and the side to be printed facing up. See [Printing on custom-sized media and cardstock](#) for more information.

Printing on transparencies or labels

Only use transparencies and labels that are recommended for use in laser printers, such as HP transparency film and HP LaserJet labels. See [Printer media specifications](#) for more information.

CAUTION

Be sure to set the correct media type in the printer settings as instructed below. The printer adjusts the fuser temperature according to the media type setting. When printing on special media such as transparencies or labels, this adjustment prevents the fuser from damaging the media as it passes through the printer.

CAUTION

Inspect the media to make sure that it is not wrinkled or curled and that it does not have any torn edges or missing labels.

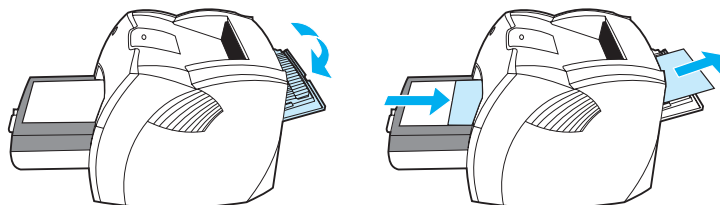
To print transparencies or labels

- 1 Open the straight-through output door.
- 2 Load a single page in the priority input tray or load multiple pages in the main input tray. Make sure that the top of the media is forward and the side to be printed (rough side) is facing up.
- 3 Adjust the media guides.
- 4 Access the printer properties (or printing preferences in Windows 2000 and XP). See [Printer properties \(driver\)](#) for instructions.
- 5 On the **Paper/Quality** tab or the **Paper** tab (the **Paper Type/Quality** tab for some Mac drivers), choose the correct media type.

Note

Not all printer features are available from all drivers or operating systems. See the printer properties (driver) online Help for information about availability of features for that driver.

- 6 Print the document. Remove the media from the back of the printer as it prints to prevent it from sticking together and place the printed pages on a flat surface.



Printing on envelopes

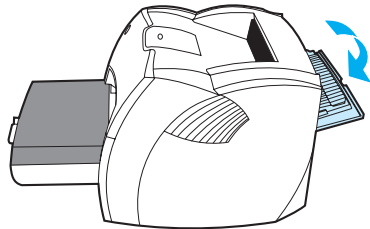
Printing one envelope

Only use envelopes that are recommended for laser printers. See [Printer media specifications](#) for more information.

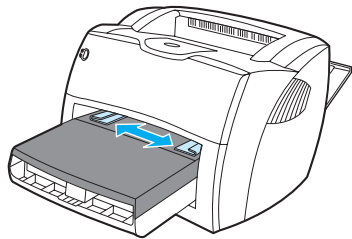
Note

Use the priority input tray for printing one envelope. Use the main input tray for printing multiple envelopes.

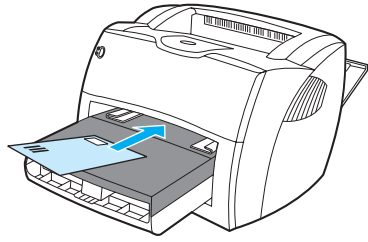
- 1 To prevent the envelopes from curling as they print, open the straight-through output door.



- 2 Before loading the envelopes, slide the media guides outward to slightly wider than the envelopes.



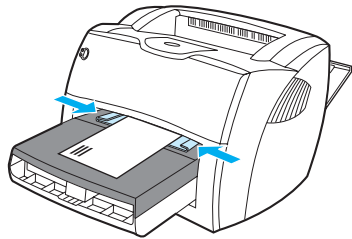
- 3 Place the envelope with the side to be printed facing up and the top edge along the left media guide.



Note

If the envelope has a flap on the short edge, feed that edge into the printer first.

- 4 Adjust the media guides to the length and width of the envelope.



- 5 Access the printer properties (or printing preferences in Windows 2000 and XP). See [Printer properties \(driver\)](#) for instructions.
- 6 On the **Paper/Quality** tab or the **Paper** tab (the **Paper Type/Quality** tab for some Mac drivers), select **Envelope** as the media type.

Note

Not all printer features are available from all drivers or operating systems. See the printer properties (driver) online Help for information about availability of features for that driver.

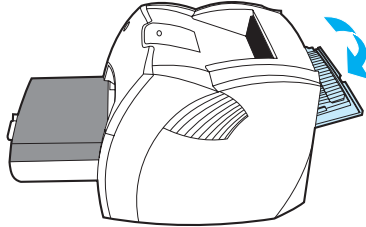
Printing multiple envelopes

Only use envelopes that are recommended for laser printers. See [Printer media specifications](#) for more information.

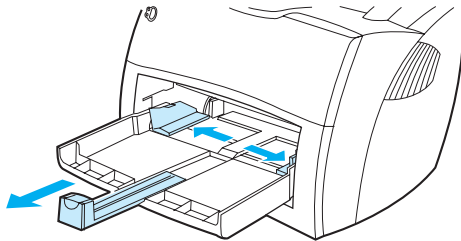
Note

Use the priority input tray for printing one envelope. Use the main input tray for printing multiple envelopes.

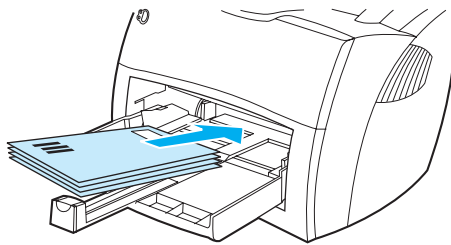
- 1 To prevent the envelopes from curling as they print, open the straight-through output door.



- 2 Before loading the envelopes, slide the media guides outward to slightly wider than the envelopes.



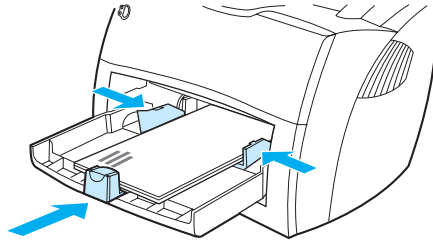
- 3 Place the envelopes with the side to be printed facing up and the top edge along the left media guide. Stack up to 30 envelopes.



Note

If the envelopes have a flap on the short edge, feed that edge into the printer first.

- 4 Adjust the media guides to the length and width of the envelopes.

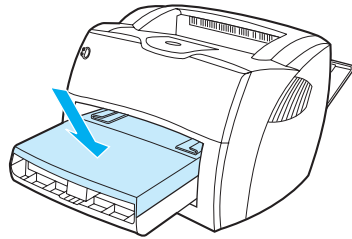


- 5 Access the printer properties (or printing preferences in Windows 2000 and XP). See [Printer properties \(driver\)](#) for instructions.
- 6 On the **Paper/Quality** tab or the **Paper** tab (the **Paper Type/Quality** tab for some Mac drivers), select **Envelope** as the media type.

Note

Not all printer features are available from all drivers or operating systems. See the printer properties (driver) online Help for information about availability of features for that driver.

- 7 Replace the priority input tray.



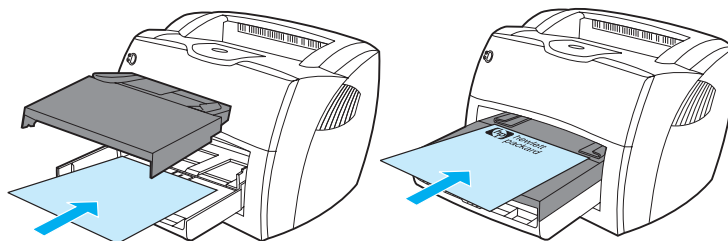
Printing on letterhead and preprinted forms

To print letterhead or preprinted forms

- 1 Load the paper with the top forward and the side to be printed facing up. Adjust the media guides to fit the width of the paper.
- 2 Print the document.

Note

To print a single-page cover letter on letterhead, followed by a multiple-page document, load the letterhead in the priority input tray and load the standard paper in the main input tray. The printer automatically prints from the priority input tray first.



Printing on custom-sized media and cardstock

The HP LaserJet 1150 and 1300 series printers can print on custom-sized media or cardstock between 76 by 127 mm (3 by 5 inches) and 216 by 356 mm (8.5 by 14 inches). Depending on the media, you can print up to 10 sheets from the priority input tray. Use the main input tray for multiple sheets.

CAUTION

Make sure that the sheets are not stuck together before you load them.

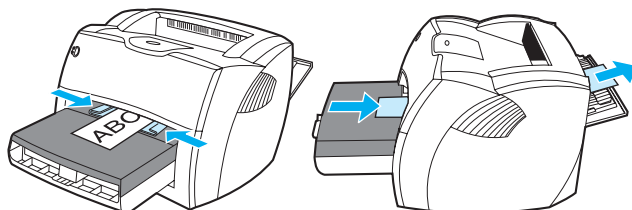
To print on custom-sized media or cardstock

- 1 Open the straight-through output door.
- 2 Load the media with the narrow side forward and the side to be printed facing up. Adjust the side and rear media guides to fit the media.
- 3 Select the correct size in the printer settings. (Software settings can override printer properties.
- 4 Access the printer properties (or printing preferences in Windows 2000 and XP). See [Printer properties \(driver\)](#) for instructions.
- 5 On the **Paper/Quality** tab or the **Paper** tab (the **Paper Type/Quality** tab for some Mac drivers), select the custom size option. Specify the dimensions of the custom-sized media.

Note

Not all printer features are available from all drivers or operating systems. See the printer properties (driver) online Help for information about availability of features for that driver.

- 6 Print the document.



3 Printing tasks

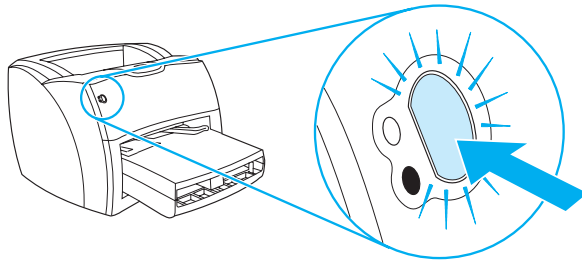
This chapter provides information on the following topics:

- [Manual feed](#)
- [Printing watermarks](#)
- [Printing multiple pages on a single sheet of paper \(N-up printing\)](#)
- [Printing on both sides of the paper \(manual duplexing\)](#)
- [Printing booklets](#)
- [Canceling a print job](#)
- [Understanding print quality settings](#)
- [Using EconoMode \(Saves toner\)](#)

Manual feed

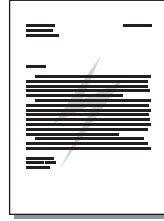
You can use manual feed when printing mixed media, for example, an envelope, then a letter, then an envelope, and so on. Load an envelope in the priority input tray and load letterhead in the main input tray. You can also use manual feed to protect your privacy when printing to a network printer.

To print using manual feed, access the printer properties or printer setup in your software application, and select **Manual Feed** from the **Source Tray** drop-down list. See [Printer properties \(driver\)](#) for instructions. After you have enabled the setting, press the **Go** button (blinking) each time to print.



Printing watermarks

You can use the watermark option to print text "underneath" (in the background) of an existing document. For example, you might want to have large gray letters reading *Draft* or *Confidential* printed diagonally across the first page or all of the pages of a document.



Accessing the watermark feature

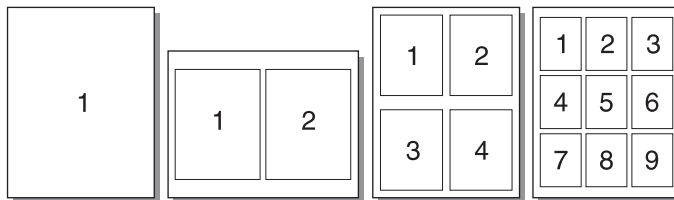
- 1 From your software application, access the printer properties (or printing preferences in Windows 2000 and XP). See [Printer properties \(driver\)](#) for instructions.
- 2 On the **Effects** tab (the **Watermark/Overlay** tab for some Mac drivers), select the watermark you want to use.

Note

Not all printer features are available from all drivers or operating systems. See the printer properties (driver) online Help for information about availability of features for that driver.

Printing multiple pages on a single sheet of paper (N-up printing)

You can select the number of pages that you want to print on a single sheet of paper. If you choose to print more than one page per sheet, the pages appear smaller and are arranged on the sheet in the order that they would otherwise be printed.



Accessing the multiple pages per sheet feature

- 1 From your software application, access the printer properties (or printing preferences in Windows 2000 and XP). See [Printer properties \(driver\)](#) for instructions.
- 2 On the **Finishing** tab (the **Layout** tab for some Mac drivers), select the correct number of pages per sheet.

Note

Not all printer features are available from all drivers or operating systems. See the printer properties (driver) online Help for information about availability of features for that driver.

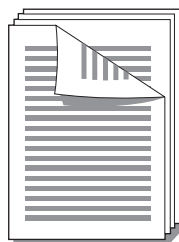
- 3 There is also a check box for page borders and a pull-down menu to specify the order of pages printed on the sheet.

Printing on both sides of the paper (manual duplexing)

To print on both sides of the paper (manual duplexing), you must run the paper through the printer twice. You can print using the media output bin or the straight-through output path. Hewlett-Packard recommends that you use the media output bin for lightweight paper and use the straight-through output path for any heavy media or media that curls when printed.

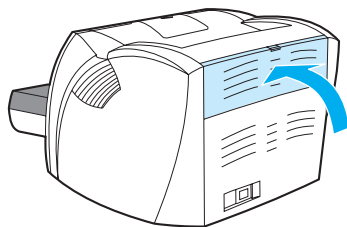
Note

Manual duplexing can cause the printer to become dirty, reducing print quality. See [Cleaning the printer](#) for instructions if the printer becomes dirty.



Manual duplex using the top output bin

- 1 Make sure that the straight-through output door is closed.

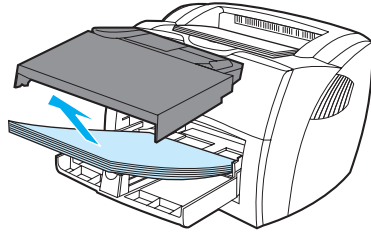


- 2 Access the printer properties (or printing preferences in Windows 2000 and XP). See [Printer properties \(driver\)](#) for instructions.
- 3 On the **Device Settings** tab, select the option to allow manual duplexing.
- 4 On the **Finishing** tab (the **Paper Type/Quality** tab for some Mac drivers), select the option to **Print on Both Sides**. Ensure that **Straight Paper Path** is *not* checked.
- 5 Print the document.

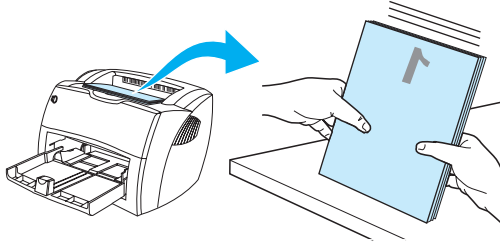
Note

Not all printer features are available from all drivers or operating systems. See the printer properties (driver) online Help for information about availability of features for that driver.

- 6 After side one has printed, remove the remaining paper from the input tray, and set it aside until after you finish your manual duplexing job.

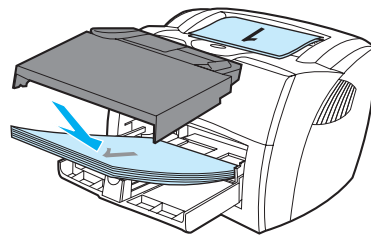


- 7 Gather the printed pages, and straighten the stack.



- 8 Place the stack back in the input tray. Side one should be facing down with the bottom edge feeding into the printer first. Replace the priority input tray.

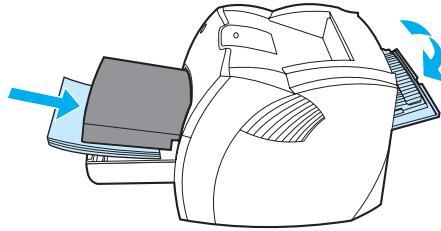
Click **OK** (on screen), and wait for side two to print.



Manual duplex on heavy media or card stock

For heavy media, such as card stock, use the straight-through output path.

- 1 Load the media, and open the straight-through output door.

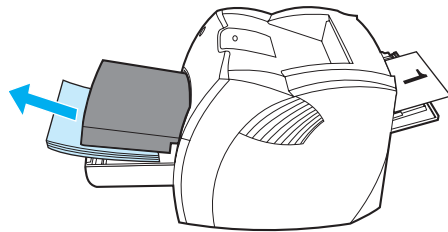


- 2 Access the printer properties (or printing preferences in Windows 2000 and XP). See [Printer properties \(driver\)](#) for instructions.
- 3 On the **Device Settings** tab, select the option to allow manual duplexing.
- 4 On the **Finishing** tab (the **Paper Type/Quality** tab for some Mac drivers), select the option to **Print on Both Sides**. Ensure that **Straight Paper Path** is checked.
- 5 Print the document.

Note

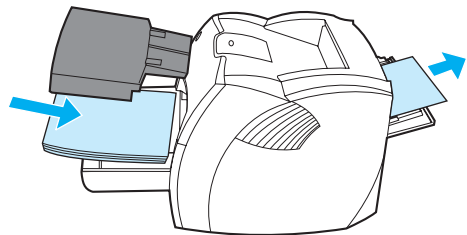
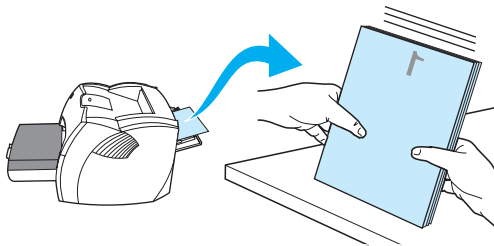
Not all printer features are available from all drivers or operating systems. See the printer properties (driver) online Help for information about availability of features for that driver.

- 6 After side one has printed, remove the remaining paper from the input tray and set it aside until after you finish your manual duplexing job.



- 7 Gather the printed pages, turn the printed side down, and straighten the stack before placing it back in the input tray. Side one should be facing down with the bottom edge feeding into the printer first.

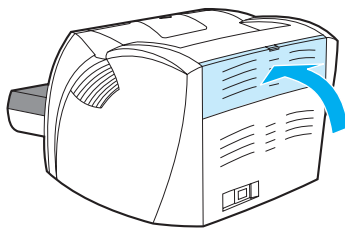
Click **OK** (on screen), and wait for side two to print.



Printing booklets

You can print booklets on letter, legal, executive, or A4 paper.

- 1 Load the paper, and make sure that the straight-through output door is closed.

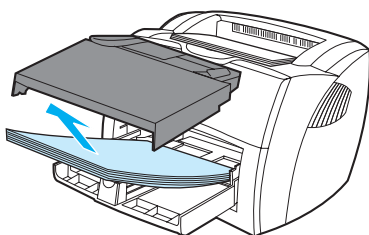


- 2 Access the printer properties (or printing preferences in Windows 2000 and XP). See [Printer properties \(driver\)](#) for instructions.
- 3 On the **Device Settings** tab, select the option to allow manual duplexing.
- 4 On the **Finishing** tab (the **Paper Type/Quality** tab for some Mac drivers), select the option to **Print on Both Sides**. Ensure that **Straight Paper Path** is *not* checked.
- 5 Set the number of pages per sheet to two. Select the appropriate binding option, and click **OK**. Print the document.

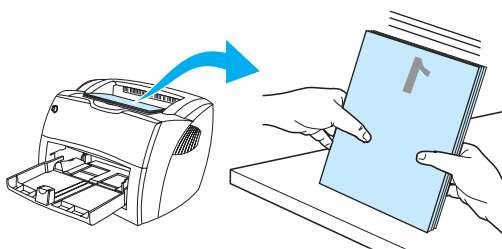
Note

Not all printer features are available from all drivers or operating systems. See the printer properties (driver) online Help for information about availability of features for that driver.

- 6 After side one has been printed, remove the remaining paper from the input tray, and set it aside until your booklet job is complete.

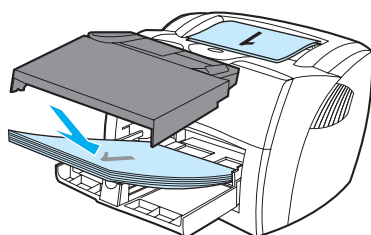


- 7 Gather the printed pages, turn the printed side down, and straighten the stack of paper.

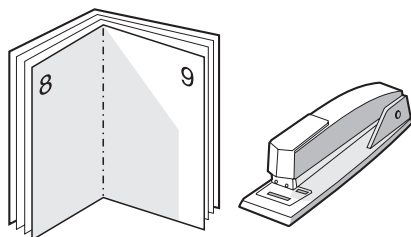


- 8 Place the pages from side one back in the input tray. Side one should be facing down with the bottom edge feeding into the printer first.

Click **OK** (on screen), and wait for side two to print.



- 9 Fold and staple the pages.



Canceling a print job

You can cancel a print job from a software application or a print queue.

To stop the printer immediately, remove the remaining paper from the printer. After the printer stops, use one of the following options.

- **Printer control panel:** To cancel the print job, press and release the **Go** button on the printer control panel.
- **Software application:** Typically, a dialog box appears briefly on your screen, allowing you to cancel the print job.
- **Windows print queue:** If a print job is waiting in a print queue (computer memory) or print spooler, delete the job there. Go to the **Printer** screen in Windows 98, Me, 2000, and XP click **Start, Settings, and Printers**. Double-click the **HP LaserJet 1150** or the **HP LaserJet 1300** icon to open the window, select your print job, and click **Delete**.
- **Desktop print queue (Mac OS):** Open the printer queue by double-clicking on the printer's icon in the **Finder**. Then highlight the print job and click **Trash**.

If the status lights on the control panel continue to blink after you cancel a print job, the computer is still sending the job to the printer. Either delete the job from the print queue or wait until the computer finishes sending data. The printer will return to the Ready state.

Understanding print quality settings

Print quality settings affect how light or dark the print is on the page and the style that the graphics are printed. You can also use the print quality settings to optimize the print quality for a specific media type. See [Optimizing print quality for media types](#) for more information.

You can change the settings in the printer properties to accommodate the types of jobs you are printing. The following are the settings:

- **600 dpi:** This is the default setting.
 - **FastRes 1200:** This setting provides better print quality, but jobs take longer to print.
 - **ProRes 1200:** This setting is available for the HP LaserJet 1300 series printer. It provides the best print quality.
 - **EconoMode (Saves Print Cartridges):** Text is printed using less toner. This setting is useful when you are printing drafts. You can turn on this option independently of other print quality settings.
- 1 Access the printer properties (or printing preferences in Windows 2000 and XP). See [Printer properties \(driver\)](#) for instructions.
 - 2 On the **Paper/Quality** tab or the **Finishing** tab (the **Paper Type/Quality** tab for some Mac drivers), select the print quality setting you want to use.

Note

Not all printer features are available from all drivers or operating systems. See the printer properties (driver) online Help for information about availability of features for that driver.

Note

To change the print quality settings for all future print jobs, access the properties through the **Start** menu in the Windows system tray. To change the print quality settings only for the current software application's use, access the properties through the **Print Setup** menu in the application you are using to print. See [Printer properties \(driver\)](#) for more information.

Using EconoMode (Saves toner)

An excellent way to extend the life of your print cartridge is by using EconoMode. EconoMode uses substantially less toner than normal printing. The printed image is much lighter, but it is adequate for printing drafts or proofs.

- 1 To enable EconoMode, access the printer properties (or printing preferences in Windows 2000 and XP). See [Printer properties \(driver\)](#) for instructions.
- 2 On the **Paper/Quality** tab or the **Finishing** tab (the **Paper Type/Quality** tab for some Mac drivers), select the **EconoMode** checkbox.

Note

Not all printer features are available from all drivers or operating systems. See the printer properties (driver) online Help for information about availability of features for that driver.

Note

See [Printer properties \(driver\)](#) for instructions on enabling EconoMode for all future jobs.

4 Maintenance

This chapter provides information on the following topics:

- [Using HP print cartridges](#)
- [Storing print cartridges](#)
- [Print cartridge life expectancy](#)
- [Saving toner](#)
- [Redistributing toner](#)
- [Changing the print cartridge](#)
- [Cleaning the printer](#)

Using HP print cartridges

HP policy on non-HP print cartridges

Hewlett-Packard Company cannot recommend the use of non-HP print cartridges, either new, refilled, or remanufactured. Since they are not HP products, Hewlett-Packard cannot influence their design or control their quality. Service or repair that is required as a result of using non-HP print cartridges will not be covered under the printer warranty.

Note

The warranty does not apply to defects resulting from software, interfacing, or parts not supplied by Hewlett-Packard.

Storing print cartridges

Do not remove the print cartridge from its package until you are ready to use it. The shelf life of a print cartridge in an unopened package is approximately 2.5 years. The shelf life of a print cartridge in an opened package is approximately 6 months.

CAUTION

To prevent damage to the print cartridge, minimize its exposure to direct light.

Print cartridge life expectancy

The life of the print cartridge depends on the amount of toner that your print jobs require. When printing text at 5 percent coverage, the print cartridge lasts for the following average amounts:

- HP LaserJet 1150 printer: 2,500 pages
- HP LaserJet 1300 series printer: 2,500 pages (a replacement cartridge that lasts for 4,000 pages is also available)

This life expectancy assumes that you set the print density to 3 and turn EconoMode off. (These are the default settings.)

Saving toner

While in EconoMode, the printer uses less toner on each page. Selecting this option will extend the life of the print cartridge and reduce your cost per page, but it will reduce print quality. See [Using EconoMode \(Saves toner\)](#) for more information.

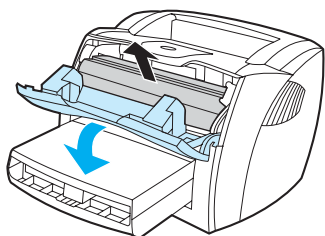
Redistributing toner

When toner is low, faded or light areas appear on the printed page. You might be able to temporarily improve print quality by redistributing the toner, which means that you might be able to finish the current print job before replacing the print cartridge.

Note

You will feel some resistance when you open the print cartridge door. Opening the print cartridge door conveniently lifts the print cartridge for removal.

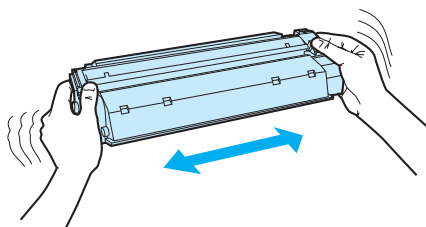
- 1 Open the print cartridge door, and remove the print cartridge from the printer.



CAUTION

To prevent damage, do not expose the print cartridge to light. Cover it with a sheet of paper.

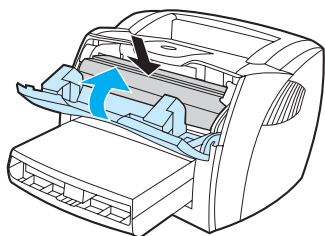
- 2 To redistribute the toner, gently shake the print cartridge from side to side.



CAUTION

If toner gets on your clothing, wipe it off with a dry cloth and wash the clothing in cold water. *Hot water sets toner into the fabric.*

- 3 Reinsert the print cartridge into the printer, and close the print cartridge door.



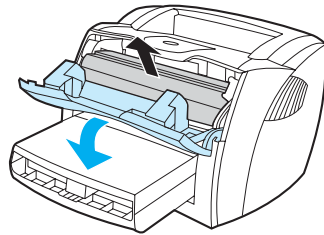
If the print is still light, install a new print cartridge. See [Changing the print cartridge](#) for instructions.

Changing the print cartridge

Note

You will feel some resistance when you open the print cartridge door. Opening the print cartridge door conveniently lifts the print cartridge for removal.

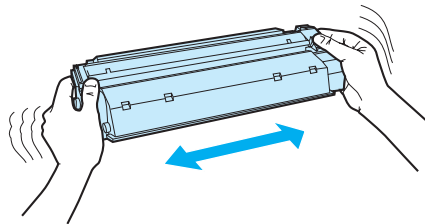
- 1 Open the print cartridge door, and remove the old print cartridge. See the recycling information inside the print cartridge box.



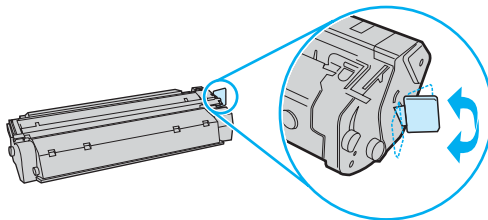
CAUTION

To prevent damage, do not expose the print cartridge to light. Cover it with a piece of paper.

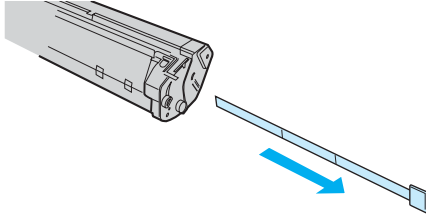
- 2 Remove the new print cartridge from the packaging, and gently shake it from side to side to distribute the toner evenly inside the cartridge.



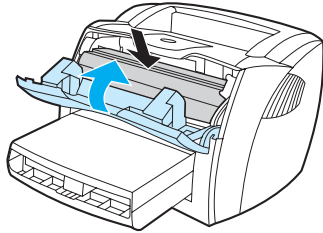
- 3 Bend the tab on the right side of the cartridge to break it loose.



- 4 Pull the tab until all the tape is removed from the cartridge. Put the tab in the print cartridge box to return for recycling.



- 5 Insert the print cartridge in the printer, making sure that the print cartridge is in position. Close the print cartridge door.



CAUTION

If toner gets on your clothing, wipe it off with a dry cloth and wash the clothing in cold water. *Hot water sets toner into the fabric.*

Cleaning the printer

Clean the outside of the printer with a clean, damp cloth when necessary.

CAUTION

Do not use ammonia-based cleaners on or around the printer.

During the printing process, paper, toner, and dust particles can accumulate inside the printer. Over time, this buildup can cause print quality problems, such as toner specks or smearing. To correct and prevent these types of problems, you can clean the print cartridge area and the printer media path.

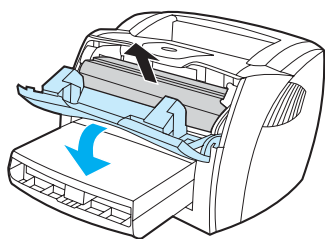
Cleaning the print cartridge area

You do not need to clean the print cartridge area often. However, cleaning this area can improve the quality of your printed sheets.

WARNING!

Before cleaning the printer, turn the printer off by unplugging the power cord, and wait for the printer to cool.

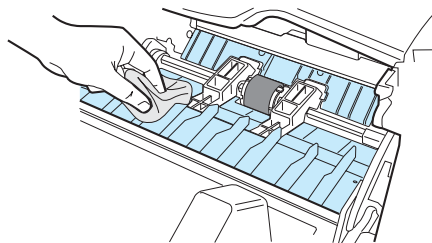
- 1 Open the print cartridge door, and remove the print cartridge.



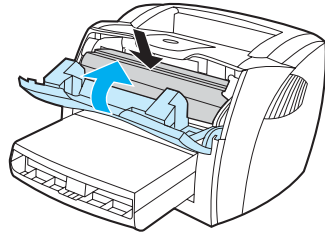
CAUTION

To prevent damage, do not expose the print cartridge to light. Cover the print cartridge if necessary. Also, do not touch the black sponge transfer roller inside the printer. By doing so, you can damage the printer.

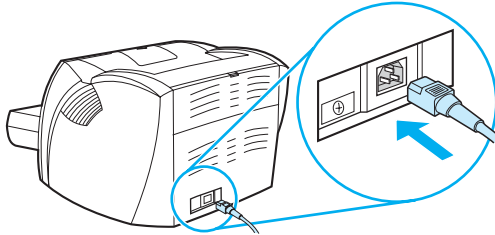
- 2 With a dry, lint-free cloth, wipe any residue from the media path area and the print cartridge cavity.



- 3 Replace the print cartridge, and close the print cartridge door.



- 4 Plug the power cord back into the printer.



Cleaning the printer media path

If you are experiencing toner specks or dots on the printouts, clean the printer media path. This process uses a transparency to remove dust and toner from the media path. Do not use bond or rough paper.



Note

For best results use a sheet of transparency. If you do not have any transparencies, you can use copier grade media (18 to 24 lb. or 70 to 90 g/m²) with a smooth surface.

- 1 Make sure that the printer is idle and the Ready light is on.
- 2 Load the media in the input tray.
- 3 Print a cleaning page using one of the following methods:
 - Access the HP toolbox. See [Using the hp toolbox](#) for instructions. Click the **Troubleshooting** tab, and click **Print Quality Tools**. Select the cleaning page.
Or
 - On the printer control panel, press and hold the **Go** button until all three lights come on (about 10 seconds). When all three lights come on, release the **Go** button.

Note

The cleaning process takes approximately 2 minutes. The cleaning page will stop periodically during the cleaning process. Do not turn the printer off until the cleaning process has finished. You might need to repeat the cleaning process several times to thoroughly clean the printer.

5 Managing the printer

This chapter provides information on the following topics:

- [Printer information pages](#)
- [Using the hp toolbox](#)
- [Using the embedded Web server](#)
- [Wireless printing](#)

Printer information pages

Special pages reside within the memory of the printer. These pages help you to diagnose and solve problems with the printer.

Demo page

To print the Demo page, press **Go** when the printer is ready (Ready light on) and not printing.

Configuration page

The Configuration page lists current settings and properties of the printer. It also contains a status log report. You can print a Configuration report from the printer, the embedded web server, or the HP Toolbox.

To print the Configuration page from the printer, press **Go** for 5 seconds when the printer is in the ready state. When the Go light turns on, release the Go button.

Note

You can also get the information contained in the Event log and the Configuration page through the HP Toolbox without printing the pages. See [Using the hp toolbox](#) for more information.

Using the hp toolbox

The HP toolbox is a Web application that you can use for the following tasks:

- Check the printer status.
- Configure the printer settings.
- View troubleshooting information.
- View online documentation.

You can view the HP toolbox when the printer is directly connected to your computer or when it is connected to a network. You must have performed a complete software installation to use the HP toolbox.

Note

You do not have to have Internet access to open and use the HP toolbox. However, if you click a link in the **Other Links** area, you must have Internet access in order to go to the site associated with the link. See [Other links](#) for more information.

Supported operating systems

HP toolbox is supported for the following operating systems:

- Windows 98, 2000, Me, and XP
- Mac OS X v10.1 and v10.2

Supported browsers

To use the HP toolbox, you must have one of the following browsers:

- Microsoft Internet Explorer 5 or later
- Netscape Navigator 6 or later.

All pages can be printed from the browser.

To view hp toolbox

- 1 On the **Start** menu, point to **Programs**, point to **HP LaserJet 1150** or **HP LaserJet 1300**, and choose the **HP toolbox**.
- 2 The HP toolbox opens in a Web browser.

Note

Once you open the URL, you can bookmark it so that you can return to it quickly in the future.

hp toolbox sections

The HP toolbox software contains these sections:

- [Status tab](#)
- [Troubleshooting tab](#)
- [Alerts tab](#)
- [Documentation tab](#)
- [Advanced Printer Settings window](#)
- [Network window](#) (available only for the HP LaserJet 1300 series printer and only when an LIO card is installed)

Other links

Each page in the HP toolbox contains links to the HP website for product registration, product support, and for ordering supplies. You must have Internet access in order to use any of these links. If you use a dial-up connection and did not connect when you first opened the HP toolbox, you must connect before you can visit these websites.

Status tab

The Status tab has links to these main pages:

- **Device Status.** View printer status information. This page will indicate printer conditions such as a paper jam or an empty tray. After you correct a problem with the printer, click the **Refresh** button to update the device status.
- **Supplies Status.** This page is available for the HP LaserJet 1300 series printer only. View detailed supplies status such as the percent of toner remaining in the print cartridge and the number of pages printed with the current print cartridge. This page also has links to order supplies and to find recycling information.
- **Print Info pages.** Print the configuration page and various other information pages that are available for the printer.

Troubleshooting tab

The Troubleshooting tab provides links to various printer troubleshooting information. For example, these pages provide information on how to clear a jam, how to resolve print quality problems, how to interpret the control panel lights, and how to resolve other problems with the printer.

Alerts tab

The Alerts tab allows you to configure the printer to automatically notify you of printer alerts. The Alerts tab has links to these main pages:

- Set up status alerts
- Set up e-mail alerts
- Administrative settings

Set up status alerts

On the Set up status alerts page you can choose to turn alerts on or off, specify when the printer should send an alert, and choose from two different types of alerts:

- a pop-up message
- a task bar icon

Click **Apply** to activate the settings.

Set up e-mail alerts

This page allows you to designate up to two e-mail addresses to notify of printer status alerts. Follow the instructions on the screen to set up e-mail alerts.

Administrative settings

This page allows you to set the frequency of how often the HP toolbox checks for printer alerts. Three settings are available:

- once per minute (every 60 seconds)
- twice per minute (every 30 seconds)
- twenty times per minute (every 3 seconds)

If you want to reduce network I/O traffic, reduce the frequency that the printer checks for alerts.

Documentation tab

The Documentation tab contains links to these information sources:

- **User Guide.** Contains the information about the printer usage, warranty, specifications, and support that you are currently reading. The user guide is available in both .html and .pdf format.
- **Read Me.** Contains information discovered after other documentation such as the user guide was developed.
- **Late Breaking News.** Contains late-breaking information about the printer. In English only.

Advanced Printer Settings window

When you click the **Advanced Printer Settings** link, a new window opens. The Advanced Printer Settings window has two tabs:

- Information tab
- Settings tab

Information tab

The Information tab provides quick links to the following information:

- Device status
- Configuration
- Supplies status (HP LaserJet 1300 series printer only)
- Event log
- Print Info pages

Settings tab

The Settings tab has links to several pages that allow you to view and change the printer's configuration.

Note

Software settings can override settings made in the HP toolbox.

- **Device Information.** View basic information about the printer.
- **Paper Handling.** View and change the settings for the printer's input tray.
- **Printing.** View and change the default printer job settings.
- **PCL.** View and change the PCL font information.
- **PostScript.** This page is available for the HP LaserJet 1300 series printer only. View and change the settings for PS errors and timeout.
- **Print Quality.** View and change the print quality settings.
- **Print Modes.** View and change the print modes for various media types.
- **System Setup.** View and change system information.
- **I/O.** View and change the I/O timeout setting.
- **Resets.** Change all the printer settings back to the factory default settings.

Network window

Note

This option is only available for the HP LaserJet 1300 series printer and only when an LIO card is installed.

When you click the **Network** link on the Advanced Printer Settings page, a new window opens. Use this section to configure network settings.

Using the embedded Web server

The embedded Web server is available for HP LaserJet 1300 series printers with LIO network connections. The embedded Web server provides the same functions as the Advanced Printer Settings section of the HP toolbox. The main differences between using the embedded Web server and using the HP toolbox are the following:

- You do not need to install any software on the computer. You only need to have a supported Web browser. To use the embedded Web server, you must have Microsoft Internet Explorer 5.0 or later or Netscape Navigator 4.75 or later.
- The embedded Web server is available in English only.
- The embedded Web server does not provide e-mail or status alerts.
- The embedded Web server is supported by more operating systems than the HP toolbox, including Windows 95, Windows NT, Linux, and UNIX[®].

The embedded Web server allows you to view printer and network status and to manage printing functions from your computer instead of from the printer control panel. Below are examples of what you can do using the embedded Web server:

- view printer status information
- view and print internal pages
- determine the remaining life on all supplies and order new ones
- set the type of paper loaded in each tray
- view and change tray configurations
- view and change the printer default configuration settings
- view and change network configuration

The embedded Web server works when the printer is connected to an IP-based network. The embedded Web server does not support IPX- or AppleTalk-based printer connections.

Note

You do not have to have Internet access to open and use the embedded Web server. However, if you click a link in the **Other Links** area, you must have Internet access in order to go to the site associated with the link.

To open the embedded Web server

- 1 In a supported Web browser, type the IP address or hostname for the printer. To find the IP address, print a Configuration page at the printer by pressing and holding **Go** for 5 seconds.

Note

Once you open the URL, you can bookmark it so that you can return to it quickly in the future.

- 2 The embedded Web server has three tabs that contain settings and information about the printer: the **Information** tab, the **Settings** tab, and the **Networking** tab. Click the tab that you want to view.

Information tab

The Information pages group consists of the following pages.

- **Device Status.** This page displays the printer status and shows the life remaining of HP supplies. This page also displays product information such as the network name, network address, and model information.
- **Configuration.** This page shows the information found on the printer Configuration page.
- **Supplies Status.** This page shows the life remaining of HP supplies and provides supplies part numbers. To order new supplies, click **Order Supplies** in the **Other Links** area on the left side of the window. To visit any web site, you must have Internet access.
- **Event log.** This page shows a list of all printer events and errors.
- **Print Info Pages.** This page has links that allow you to print the various information pages that reside within the memory of the printer.

Settings tab

This tab allows you to configure the printer from your computer. If this printer is networked, always consult with the printer administrator before changing settings on this tab.

The **Settings** tab contains the following pages.

- **Device Information.** View and change basic information about the printer.
- **Paper Handling.** View and change the settings for the printer's input tray.
- **Printing.** View and change the default printer job settings.
- **PCL.** View and change the PCL font information.
- **PostScript.** View and change the settings for PS errors and timeout.
- **Print Quality.** View and change the print quality settings.
- **Print Modes.** View and change the print modes for various media types.
- **System Setup.** View and change system information.
- **I/O.** View and change the I/O timeout setting.
- **Service.** Complete service tasks in the printer, such as changing all the printer settings back to the factory default settings.

Networking tab

This tab allows the network administrator to control network-related settings for the printer when it is connected to an IP-based network.

Other links

This section contains links that connect you to the Internet. You must have Internet access in order to use any of these links. If you use a dial-up connection and did not connect when you first opened the embedded Web server, you must connect before you can visit these web sites. Connecting might require that you close the embedded Web server and reopen it.

- **Product Registration.** Connects you to the product registration page on the HP web site.
- **Order Supplies.** Click this link to connect to the HP web site and order genuine HP supplies, such as print cartridges and paper.
- **Product Support.** Connects to the support site for the HP LaserJet 1300 series printer. You can search for help regarding general topics.

Wireless printing

Wireless networks offer a safe, secure, and cost-effective alternative to traditional wired network connections. See [Ordering supplies and accessories](#) for a list of available wireless print servers.

IEEE 802.11b standard

With the wireless HP Jetdirect 802.11b print server, HP peripherals can be placed anywhere in the office or home and connected to a wireless network running Microsoft, Apple, Netware, UNIX, or Linux network operating systems. This wireless technology provides a high-quality printing solution without the physical constraints of wiring. Peripherals can be conveniently placed anywhere in an office or home and can be easily moved without changing network cables.

Installation is easy with the HP Install Network Printer Wizard.

HP Jetdirect 802.11b print servers are available for USB and parallel connections.

Bluetooth

Bluetooth™ wireless technology is a low-power, short-range radio technology that can be used to wirelessly connect computers, printers, personal digital assistants, cell phones, and other devices.

Unlike infra-red technology, Bluetooth's reliance on radio signals means that devices do not have to be in the same room, office, or cubicle with an unobstructed line of sight in order to communicate. This wireless technology increases portability and efficiency within business network applications.

The HP LaserJet 1150 and 1300 series printers have incorporated Bluetooth wireless technology. Bluetooth adaptors are available for USB and parallel connections.

6 Problemsolving

This chapter provides information on the following topics:

- [Finding the solution](#)
- [Status light patterns](#)
- [Common Macintosh problems](#)
- [Troubleshooting PostScript \(PS\) errors](#)
- [Paper handling problems](#)
- [Printed page is different than what appeared on screen](#)
- [Printer software problems](#)
- [Improving print quality](#)
- [Clearing jams](#)
- [Changing the pickup roller](#)
- [Cleaning the pickup roller](#)
- [Changing the printer separation pad](#)

Finding the solution

You can use this section to find the solution to common printer problems.

Step 1: Is the printer set up correctly?

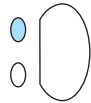
- Is the printer plugged into a power outlet that is known to work?
- Is the on/off switch in the on position?
- Is the print cartridge properly installed? See [Changing the print cartridge](#).
- Is paper properly loaded in the input tray? See [Loading media into the input trays](#).

Yes: If you answered yes to the questions above, go to [Step 2: Is the Ready light on?](#)

No: If the printer will not turn on, [Contact HP support](#).

Step 2: Is the Ready light on?

Do the control panel lights look like this picture?



Yes: Go to [Step 3: Can you print a demo page?](#)

No: If the control panel lights do not look like the picture above, see [Status light patterns](#).

If you are unable to resolve the problem, [Contact HP support](#).

Step 3: Can you print a demo page?

Press the **Go** button to print a demo page.

Yes: If the demo page printed, go to [Step 4: Is the print quality acceptable?](#)

No: If no paper came out, see [Paper handling problems](#).

If you are unable to resolve the problem, [Contact HP support](#).

Step 4: Is the print quality acceptable?

Yes: If the print quality is acceptable, go to [Step 5: Is the printer communicating with the computer?](#)

No: If the print quality is poor, see [Improving print quality](#).

Verify that the print settings are correct for the media you are using.

See the Media chapter for information on adjusting the settings for various types of media.

If you are unable to resolve the problem, [Contact HP support](#).

Step 5: Is the printer communicating with the computer?

Try printing a document from a software application.

Yes: If the document prints, go to [Step 6: Does the printed page look like you expected?](#)

No: If the document does not print, see [Printer software problems](#).

If you are using a Macintosh computer, see [Common Macintosh problems](#).

If you are using a PS driver, see [Troubleshooting PostScript \(PS\) errors](#).

If you are unable to resolve the problem, [Contact HP support](#).

Step 6: Does the printed page look like you expected?

Yes: The problem should be resolved. If it is not resolved, [Contact HP support](#).

No: See [Printed page is different than what appeared on screen](#).




If you are unable to resolve the problem, [Contact HP support](#).

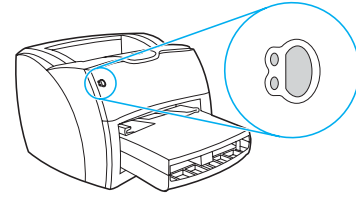
Contact HP support

- In the United States, see <http://www.hp.com/support/lj1150> for the HP LaserJet 1150 printer, or see <http://www.hp.com/support/lj1300> for the HP LaserJet 1300 series printer.
- In other locations, see <http://www.hp.com>

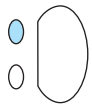
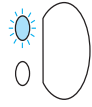
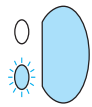
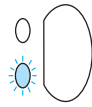
Status light patterns

Light status legend

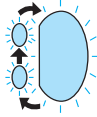
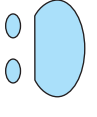
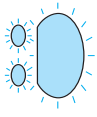
-  Symbol for "light off"
-  Symbol for "light on"
-  Symbol for "light blinking"



Control panel light message

Light status	Condition of the printer	Action
	<p>Ready The printer is ready to print.</p>	No action is necessary. To print a configuration page, press and release the Go button on the printer control panel.
	<p>Processing The printer is receiving or processing data.</p>	Wait for the job to print.
	<p>Manual feed or out of memory The printer is in manual feed mode or out of memory. You can continue printing.</p>	<p>Make sure that you have loaded the correct media. To continue printing, press and release the Go button.</p> <p>The software controls manual feed. If you do not want to be in manual feed mode, change the setting from your printer properties. See Printer properties (driver) for more information.</p> <p>The page being printed might be too complex for the printer's memory capacity.</p> <ul style="list-style-type: none"> ● To continue printing, press and release the Go button. ● Lower the resolution. See Understanding print quality settings for more information. ● Add more memory. See Installing a memory DIMM (1300 series only) for more information.
	<p>Door open, media out, no print cartridge, or media jam The printer is in an error state that requires operator intervention or help.</p>	<p>Check the following:</p> <ul style="list-style-type: none"> ● The print cartridge door is completely closed. ● Media is loaded. See Loading media into the input trays for instructions. ● The print cartridge is correctly installed in the printer. See Changing the print cartridge for instructions. ● There is a media jam. See Clearing jams for instructions. ● The left side panel is completely closed.

Control panel light message (continued)

Light status	Condition of the printer	Action
	<p>Printer initialization/Cancel Job/Cleaning Mode</p> <p>A printer initialization is taking place. If all lights blink for 1/2 of a second or longer in a sequence:</p> <ul style="list-style-type: none">● the printing is initializing● all previously sent print jobs are being purged● a cleaning page is being printed	<p>No action is necessary.</p>
	<p>Fatal error</p> <p>All lights are on.</p>	<ul style="list-style-type: none">● Turn the printer off and then back on.● Unplug the printer for 5 minutes, and then plug it back in.● If the printer still has an error, Contact HP support.
	<p>Accessory error</p> <p>All lights are blinking.</p>	<ul style="list-style-type: none">● Remove the DIMMs and replace if necessary. See Installing a memory DIMM (1300 series only) for instructions.● Contact HP support.

Return to [Finding the solution](#).

Common Macintosh problems

Choose the item that best describes the problem:

- [Problems in the Chooser](#)
- [Printing Errors](#)
- [USB Problems](#)
- [OS X problems](#)

Symptom	Possible Cause	Solution
Problems in the Chooser		
LaserWriter icon does not appear in the Chooser. (HP LaserJet 1300 series)	Software not installed correctly.	The LaserWriter 8 driver should be present as a part of the Mac OS. Make sure that the LaserWriter driver is in the Extensions folder within the systems folder. If not, install the LaserWriter driver from your Mac OS CD.
The HP LaserJet printer driver icon does not appear in the Chooser. (HP LaserJet 1150 printer)	The software was not installed properly.	Reinstall the software.
Printer name does not appear in the printer list.		Make sure the cables are connected correctly, the printer is on, and the Ready light is on. Verify that the printer driver is installed. Make sure the correct printer driver has been selected in the Chooser. Use the HP LaserJet driver for the HP LaserJet 1150 printer. Use the LaserWriter 8 driver for the HP LaserJet 1300 series printer. Make sure AppleTalk is on. (The button next to Active is selected in the Chooser.) If the printer resides on a network with multiple zones, make sure the correct zone is selected in the "AppleTalk Zones" box in the Chooser.
The printer driver does not automatically set up your selected printer even though you clicked Auto Setup in the Chooser. (HP LaserJet 1300 series)		Reinstall the printer software. Select an alternate PPD.

Symptom	Possible Cause	Solution
Printing Errors		
A print job was not sent to your desired printer.	Another printer with the same or similar name may have received your print job.	Check the AppleTalk name of the printer displayed on the configuration page.
You cannot use the computer while the printer is printing.	Background Printing has not been selected.	<p>LaserWriter 8.3</p> <p>Turn Background Printing on in the Chooser. Status messages will now be redirected to the Print Monitor allowing you to continue working while the computer is processing data to be sent to the printer.</p> <p>LaserWriter 8.4 and higher</p> <p>Turn Background Printing on by selecting File, Print Desktop, and Background Printing.</p>
An encapsulated PostScript (EPS) file does not print with the correct fonts.	This problem occurs with some software applications.	<p>Try downloading the fonts contained in the EPS file to the printer before printing.</p> <p>Send the file in ASCII format instead of binary encoding.</p>
Your document is not printing with New York, Geneva, or Monaco fonts.		Select Options in the Page Setup dialog box to deselect substituted fonts.

Symptom	Possible Cause	Solution
USB Problems		
Unable to print from a third-party USB card.	This error occurs when the software for USB printers is not installed.	When adding a third-party USB card, you might need Apple's USB Adapter Card Support software. The most current version of this software is available from Apple's web site.
A USB-connected HP LaserJet printer does not appear in the Chooser.	This problem is caused by either a software or hardware component.	<p>Software troubleshooting</p> <ul style="list-style-type: none"> ● Check that your Macintosh supports USB. ● Verify if your Macintosh has Mac OS 8.6 or later. <p>Hardware troubleshooting</p> <ul style="list-style-type: none"> ● Check that the printer is turned on. ● Verify that the USB cable is properly connected. ● Check that you are using the appropriate high-speed USB cable. ● Ensure that there are not too many USB devices drawing power from the chain. Disconnect all devices from the chain and connect the cable directly to the USB port on the host computer. ● Check to see if there are more than two non-powered USB hubs in a row on the chain. Disconnect all devices from the chain and connect the cable directly to the USB port on the host computer. <p>Note The iMac keyboard is a non-powered USB hub.</p>
	The LaserWriter driver does not display USB devices in the Chooser.	For the HP LaserJet 1300 series printer, use the Apple Desktop utility to set up the printer.

Symptom	Possible Cause	Solution
OS X problems		
Printer features do not appear.	The wrong PPD is selected for the printer.	<p>Verify which PPD is selected as follows: In the Print dialog box, click Summary. Verify that the "PPD for:" setting is correct.</p> <p>If the PPD setting is incorrect, delete the printer in the Print Center and add it again. You might need to manually select the PPD.</p>
When using OS X v10.2, the printer is not using "Rendezvous" (mDNS)		You might need to upgrade your HP Jetdirect card to a version that supports Rendezvous.
Tray 2 does not appear as an installed option, even though it is installed on the printer. (HP LaserJet 1300 series only)		The ability to manually select installable options is supported only in Mac OS X v10.2 and later.

Selecting an Alternate PostScript Printer Description (PPD) for the hp LaserJet 1300 series printer

Mac OS 9.x

- 1 Open the Chooser from the Apple menu.
- 2 Click the **LaserWriter** icon.
- 3 If you are on a network with multiple zones, select the zone in the AppleTalk Zones box where the printer is located.
- 4 Click the printer name you want to use in the Select a PostScript Printer box. (Double-clicking will immediately generate the next few steps.)
- 5 Click **Setup...** (This button may read Create for first-time setup.)
- 6 Click **Select PPD....**
- 7 Find the desired PPD in the list and click **Select**. If the desired PPD is not listed, choose one of the following options:
 - Select a PPD for a printer with similar features.
 - Select a PPD from another folder.
 - Select the generic PPD by clicking Use Generic. The generic PPD allows you to print, but limits your access to printer features.
- 8 In the Setup dialog box, click **Select**, and then click **OK** to return to the Chooser.

Note

If you manually select a PPD, an icon might not appear next to the selected printer in the Select a PostScript Printer box. In the Chooser, click **Setup**, click **Printer Info**, and then click **Update Info** to bring up the icon.

- 9 Close the Chooser.

Mac OS X

- 1 Delete the printer from the Print Center.
- 2 Add the printer again using the option to manually select the PPD.

Renaming the Printer (hp LaserJet 1300 series only)

If you are going to rename the printer, do this before selecting the printer in the Chooser. If you rename the printer after selecting it in the Chooser, you will have to go back into the Chooser and reselect it.

Use the Set Printer Name feature in the HP LaserJet Utility to rename the printer.

Return to [Finding the solution](#).

Troubleshooting PostScript (PS) errors

The following situations are PS language specific and may occur when several printer languages are being used.

Note

To receive a printed or screen displayed message when PS errors occur, open the Print Options dialog box and click the desired selection next to the PS Errors section. You can also access this from the embedded Web server.

PS Errors

Symptom	Possible Cause	Solution
The job prints in Courier (the printer's default typeface) instead of the typeface you requested.	The requested typeface is not downloaded. A personality switch may have been performed to print a PCL job just before the PS printing job was received.	Download the desired font and send the print job again. Verify the type and location of the font. Download to printer if applicable. Check with the software documentation.
A legal page prints with clipped margins.	Print job too complex.	You may need to print your job at 600 dots per inch, reduce the complexity of the page, or install more memory.
A PS error page prints.	Print job may not be PS.	Make sure the print job is a PS job. Check to see whether the software application expected a setup or PS header file to be sent to the printer.
Limit Check Error	Print job is too complex.	You may need to print your job at 600 dots per inch, reduce the complexity of the page, or install more memory.
VM Error	Font Error	Select unlimited downloadable fonts from printer driver.
Range Check	Font Error	Select unlimited downloadable fonts from printer driver.

Return to [Finding the solution](#).

Paper handling problems

Choose the item that best describes the problem:

- [Paper jam](#)
- [Print is skewed \(crooked\)](#)
- [More than one sheet of media feeds through the printer at one time](#)
- [Printer does not pull media from the media input tray](#)
- [Printer curled the media](#)
- [The printed media does not exit to the correct path](#)
- [Print job is extremely slow](#)

Media handling problems

Problem	Solution
Paper jam	<ul style="list-style-type: none">● See Clearing jams for more information.● Make sure that you are printing with media that meets specifications. See Printer media specifications for more information.● Make sure that you are printing with media that is not wrinkled, folded, or damaged.● Make sure that the printer is clean. See Cleaning the printer for more information.● If you are printing to the straight-through output path, close and open the door again to make sure that the green release levers are closed.
Print is skewed (crooked)	<ul style="list-style-type: none">● See Page skew for more information.● Adjust the media guides to the width and length of the media that you are using and try reprinting. See Printer media guides or Loading media into the input trays for more information.
More than one sheet of media feeds through the printer at one time	<ul style="list-style-type: none">● The media input tray might be too full. See Loading media into the input trays for more information.● Make sure that the media is not wrinkled, folded, or damaged.● The printer separation pad might be worn. See Changing the printer separation pad for more information.
Printer does not pull media from the media input tray	<ul style="list-style-type: none">● Make sure that the printer is not in manual feed mode. See Status light patterns for more information.● The pickup roller might be dirty or damaged. See Cleaning the pickup roller or Changing the pickup roller for instructions.
Printer curled the media	<ul style="list-style-type: none">● See Curl or wave for more information.● Open the straight-through output door to print straight through. See Media paths or Media for more information.
The printed media does not exit to the correct path	Open or close the straight-through output door to reflect the output path that you want to use. See Media paths for more information.

Media handling problems (continued)

Problem	Solution
Print job is extremely slow	<p data-bbox="686 231 1509 346">The maximum speed of the printer is up to 18 pages per minute for the HP LaserJet 1150 printer and up to 20 pages per minute for the HP LaserJet 1300 series printer. Your print job might be very complex. Try the following:</p> <ul data-bbox="686 346 1509 596" style="list-style-type: none"><li data-bbox="686 346 1509 409">● Reduce the complexity of your document (for example, reduce the number of multiple graphics).<li data-bbox="686 409 1509 514">● In the printer driver, set the media type to plain paper.<ul data-bbox="734 451 1509 514" style="list-style-type: none"><li data-bbox="734 451 1509 514">• This may cause toner to fuse improperly if using heavy media.<li data-bbox="686 514 1509 556">● Add printer memory. See Installing a memory DIMM (1300 series only)<li data-bbox="686 556 1509 596">● Narrow media or heavy media will slow printing. Use normal media.

Return to [Finding the solution](#).

Printed page is different than what appeared on screen

Choose the item that best describes the problem:

- [Garbled, incorrect, or incomplete text](#)
- [Missing graphics or text, or blank pages](#)
- [Page format is different than on another printer](#)
- [Graphics quality](#)

Printed page problems

Problem	Solution
Garbled, incorrect, or incomplete text	<p>The parallel or USB cable might be loose or defective. Try the following:</p> <ul style="list-style-type: none">● Disconnect the cable and reconnect it at both ends.● Try printing a job that you know works.● If possible, attach the cable and printer to another computer, and try printing a job that you know works.● Try using a new IEEE-1284 compliant parallel or USB cable. See Ordering supplies and accessories. <p>The wrong printer driver might have been selected when the software was installed. Make sure that the HP LaserJet 1150 or HP LaserJet 1300 is selected in the printer properties.</p> <p>There might be a problem with your software application. Try printing from another software application.</p>
Missing graphics or text, or blank pages	<ul style="list-style-type: none">● Make sure that your file does not contain blank pages.● The sealing tape might still be in the print cartridge. Remove the print cartridge, and pull out the sealing tape. Reinstall the print cartridge. See Changing the print cartridge for instructions. To check the printer, print a demo page by pressing the Go button.● The graphic settings in the printer properties might not be correct for the type of job that you are printing. Try a different graphic setting in the printer properties. See Printer properties (driver) for more information.● The printer driver might not work for the type of job that you are printing. Try using a different printer driver (software), such as the printer driver for the HP LaserJet III. <p>Note If you use a different printer driver, you will lose access to some product features.</p>

Printed page problems (continued)

Problem	Solution
Page format is different than on another printer	<p>If you used an older or different printer driver (printer software) to create the document or the printer properties settings in the software are different, the page format might change when you try to print using your new printer driver or settings. To help eliminate this problem, try the following:</p> <ul style="list-style-type: none">● Create documents and print them using the same printer driver (printer software) and printer property settings regardless of which HP LaserJet printer you use to print them.● Change the resolution, paper size, font settings, and other settings. See Printer properties (driver) for more information.
Graphics quality	<p>The graphics settings might be unsuitable for your print job. Try the following:</p> <ul style="list-style-type: none">● Check the graphic settings, such as resolution, in the printer properties and adjust them as necessary. See Printer properties (driver) for more information.● Try using a different printer driver (software), such as the printer driver for the HP LaserJet III. <p>Note If you use a different printer driver, you will lose access to some product features.</p>

Return to [Finding the solution](#).

Printer software problems

Printer software problems

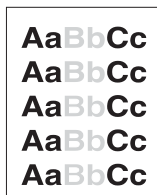
Problem	Solution
A printer driver for the HP LaserJet 1150 or the HP LaserJet 1300 printer is not visible in the Printer folder	<ul style="list-style-type: none">● Reinstall the printer software. In the Windows system tray, click Start, select Programs, and select HP LaserJet 1150 or HP LaserJet 1300 and click Uninstall. Turn the printer off. Install the printer software from the CD-ROM. Turn the printer back on. Note Close any applications that are running. To close an application that has an icon in the system tray, right-click the icon and select Close or Disable.● Try plugging the USB cable into a different USB port on the PC.● If you are trying to print to a shared printer, in the Windows system tray, click Start, select Settings, and select Printers. Double-click the Add Printer icon. Follow the instructions in the Add Printer Wizard.
An error message was displayed during the software installation	<ul style="list-style-type: none">● Reinstall the printer software. In the Windows system tray, click Start, select Programs, and select HP LaserJet 1150 or HP LaserJet 1300 and click Uninstall. Turn the printer off. Install the printer software from the CD-ROM. Turn the printer back on. Note Close any applications that are running. To close an application that has an icon in the system tray, right-click the icon and select Close or Disable.● Check the amount of free space on the drive where you are installing the printer software. If necessary, free up as much space as you can, and reinstall the printer software.● If necessary, run the Disk Defragmenter, and reinstall the printer software.
The printer is in Ready mode, but nothing prints	<ul style="list-style-type: none">● Reinstall the printer software. In the Windows system tray, click Start, select Programs, and select HP LaserJet 1150 or HP LaserJet 1300 and click Uninstall. Turn the printer off. Install the printer software from the CD-ROM. Turn the printer back on. Note Close any applications that are running. To close an application that has an icon in the system tray, right-click the icon and select Close or Disable.● Print a Demo page. Press the Go button to print a Demo page.

Return to [Finding the solution](#).

Improving print quality

This section provides information about identifying and correcting print defects.

Light print or faded



- The toner supply is low. See [Redistributing toner](#) for more information.
- The media might not meet Hewlett-Packard's media specifications (for example, the media is too moist or too rough). See [Printer media specifications](#) for more information.
- If the whole page is light, the print density adjustment is too light or EconoMode might be turned on. Adjust the print density and disable EconoMode in the printer properties. See [Saving toner](#) for more information.

Toner specks



- The media might not meet Hewlett-Packard's media specifications (for example, the media is too moist or too rough). See [Printer media specifications](#) for more information.
- The printer might need to be cleaned. See [Cleaning the printer](#) or [Cleaning the printer media path](#) for instructions.

Dropouts

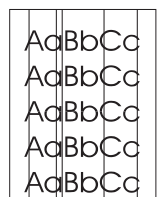


- A single sheet of media might be defective. Try reprinting the job.
- The media's moisture content is uneven or the media has moist spots on its surface. Try printing with new media. See [Printer media specifications](#) for more information.
- The media lot is bad. The manufacturing processes can cause some areas to reject toner. Try a different type or brand of media.
- The print cartridge might be defective. See [Changing the print cartridge](#) for more information.

Note

If these steps do not correct the problem, contact an HP-authorized dealer or service representative.

Vertical lines



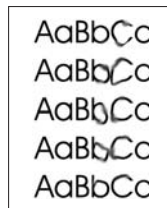
- Make sure that the priority input tray is in place.
- The photosensitive drum inside the print cartridge has probably been scratched. Install a new HP print cartridge. See [Changing the print cartridge](#) for instructions.

Gray background



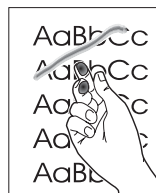
- Make sure that the priority input tray is in place.
- Decrease the print density setting through HP Toolbox or the embedded web server. This decreases the amount of background shading. See [Using the hp toolbox](#).
- Change the media to a lighter basis weight. See [Printer media specifications](#) for more information.
- Check the printer's environment. Very dry (low humidity) conditions can increase the amount of background shading.
- Install a new HP print cartridge. See [Changing the print cartridge](#) for instructions.

Toner smear



- If toner smears appear on the leading edge of the media, the media guides might be dirty. Wipe the media guides with a dry, lint-free cloth. See [Cleaning the printer](#) for more information.
- Check the media type and quality.
- Try installing a new HP print cartridge. See [Changing the print cartridge](#) for instructions.
- The fuser temperature might be too low. In your printer driver, make sure the appropriate media type is selected.

Loose toner



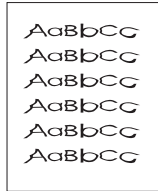
- Clean the inside of the printer. See [Cleaning the printer](#) for instructions.
- Check the media type and quality. See [Printer media specifications](#) for more information.
- Try installing a new HP print cartridge. See [Changing the print cartridge](#) for instructions.
- In your printer driver, make sure the appropriate media type is selected.
- Plug the printer directly into an AC outlet instead of into a power strip.

Vertical repetitive defects



- The print cartridge might be damaged. If a repetitive mark occurs at the same spot on the page, install a new HP print cartridge. See [Changing the print cartridge](#) for instructions.
- The internal parts might have toner on them. See [Cleaning the printer](#) for more information. If the defects occur on the back of the page, the problem will probably correct itself after a few more printed pages.
- In your printer driver, make sure the appropriate media type is selected.

Misformed characters



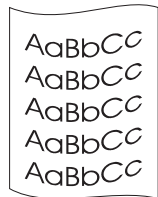
- If characters are improperly formed, producing hollow images, the media stock might be too slick. Try a different media. See [Printer media specifications](#) for more information.
- If characters are improperly formed, producing a wavy effect, the printer might need service. Print a configuration page. If the characters are improperly formed, contact an HP-authorized dealer or service representative. See [How to contact HP](#) for more information.

Page skew



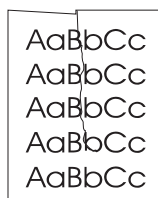
- Make sure that the media is loaded correctly and the media guides are not too tight or too loose against the media stack. See [Loading media into the input trays](#) for more information.
- The input bin might be too full. See [Loading media into the input trays](#) for more information.
- Check the media type and quality. See [Printer media specifications](#) for more information.

Curl or wave



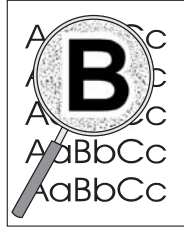
- Check the media type and quality. Both high temperature and humidity cause media to curl. See [Printer media specifications](#) for more information.
- The media might have been in the input tray too long. Turn over the stack of media in the tray. Also, try rotating the media 180° in the input tray.
- Open the straight-through output door and try printing straight through. See [Media paths](#) for more information.
- The fuser temperature might be too high. In your printer driver, make sure the appropriate media type is selected. If the problem persists, select a media type that uses a lower fuser temperature, such as transparencies or light media.

Wrinkles or creases



- Make sure that media is loaded properly. See [Loading media into the input trays](#) for more information.
- Check the media type and quality. See [Printer media specifications](#) for more information.
- Open the straight-through output door and try printing straight through. See [Media paths](#) for more information.
- Turn over the stack of media in the tray. Also, try rotating the media 180° in the input tray.

Toner scatter outline



- If large amounts of toner have scattered around the characters, the media might be resisting the toner. (A small amount of toner scatter is normal for laser printing.) Try a different media type. See [Printer media specifications](#) for more information.
- Turn over the stack of media in the tray.
- Use media designed for laser printers. See [Printer media specifications](#) for more information.

Return to [Finding the solution](#).

Clearing jams

Occasionally, media becomes jammed during a print job. Some of the causes include the following:

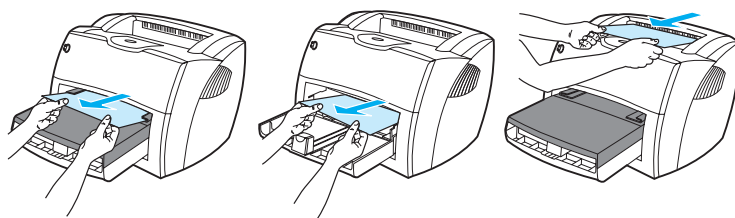
- The input trays are loaded improperly or too full. See [Loading media into the input trays](#) for more information.
- The media does not meet HP specifications. See [Printer media specifications](#) for more information.

Note

When you add new media, always remove all of the media from the input tray and straighten the stack of new media. This helps prevent multiple sheets of media from feeding through the printer at one time, reducing media jams.

You are notified of a media jam by an error in the software and the printer control panel lights. See [Status light patterns](#) for more information.

Typical media jam locations



- **Print cartridge area:** See [Removing a jammed page](#) for instructions.
- **Input tray areas:** If the page is still sticking out of the input tray, gently try to remove it from the input tray without tearing the page. If you feel resistance, see [Removing a jammed page](#) for instructions.
- **Output paths:** If the page is sticking out of the output bin, gently try to remove it without tearing the page. If you feel resistance, see [Removing a jammed page](#) for instructions.

Note

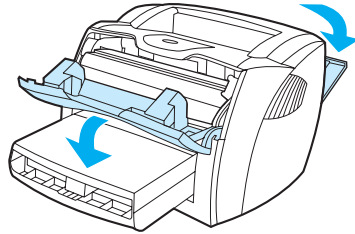
There might be loose toner in the printer after a media jam. This toner clears up after a few sheets print.

Removing a jammed page

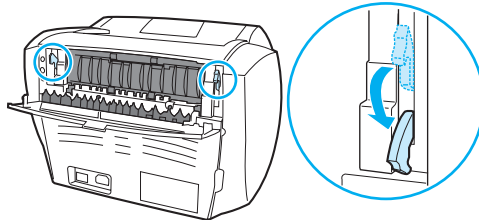
CAUTION

Media jams might result in loose toner on the page. If you get any toner on your clothes, wash them in cold water. *Hot water will permanently set the toner into the fabric.*

- 1 Open the print cartridge door and the straight-through output door.



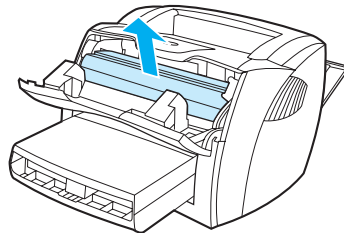
- 2 Rotate the green pressure release levers downward. If you can remove the media without removing the print cartridge, do so, and continue with step 4.



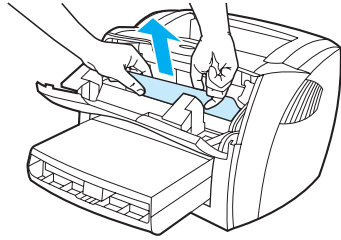
CAUTION

To prevent damage to the print cartridge, minimize its exposure to direct light.

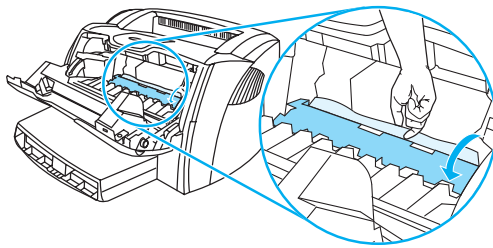
- 3 Remove the print cartridge, and place it aside.



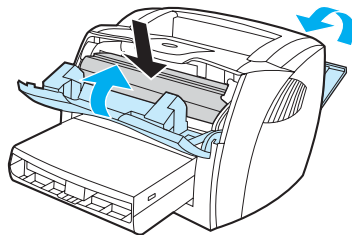
- 4 With both hands, grasp the side of the media that is most visible (this includes the middle), and carefully pull it free from the printer.



- 5 If no media is visible, grasp the tab on the right-hand side of the upper media guide and pull it forward. Carefully pull the media up and out of the printer.



- 6 When you have removed the jammed media, replace the print cartridge, and close the print cartridge door and the straight-through output door.



Note

The pressure release levers automatically close when you close the straight-through output door.
After clearing a media jam, you might need to turn the printer off and turn it back on.

Note

When you add new media, remove all of the media from the input tray and straighten the stack of new media.

Return to [Finding the solution](#).

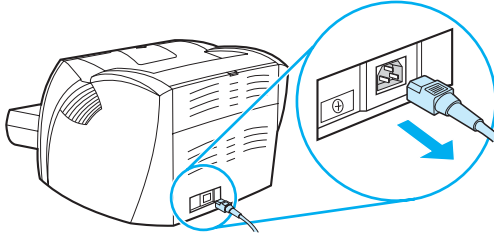
Changing the pickup roller

If the printer regularly mispicks (no media feeds through or more than one sheet feeds through), you might need to change or clean the pickup roller. See [Ordering supplies and accessories](#) to order a new pickup roller.

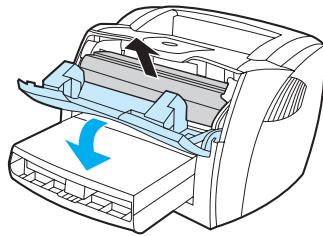
CAUTION

Failure to complete this procedure might damage the printer.

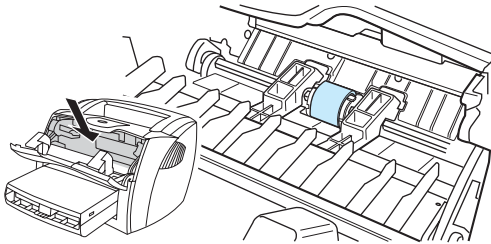
- 1 Unplug the power cord from the printer, and allow the printer to cool.



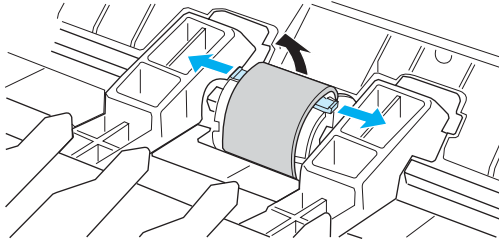
- 2 Open the print cartridge door, and remove the print cartridge.



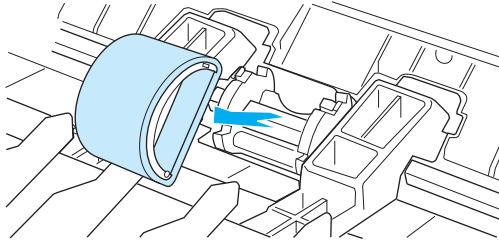
- 3 Find the pickup roller.



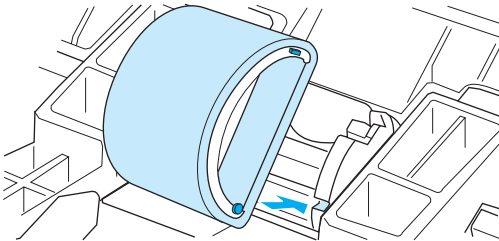
- 4 Release the small, white tabs on either side of the pickup roller, and rotate the pickup roller toward the front.



- 5 Gently pull the pickup roller up and out.



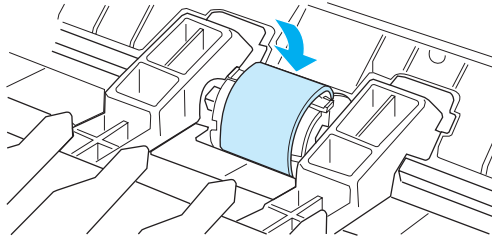
- 6 Position the new or cleaned part in the slot of the previous pickup roller. See [Cleaning the pickup roller](#) for instructions.



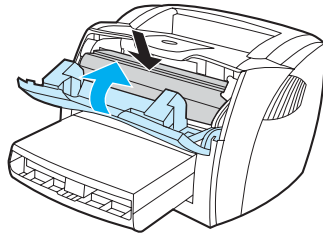
Note

Circular and rectangular pegs on each side prevent you from incorrectly positioning the pickup roller.

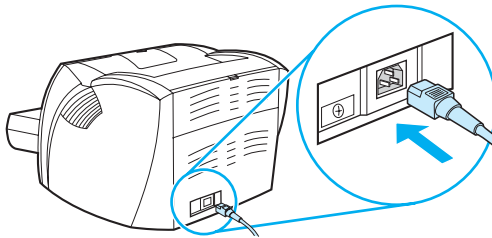
- 7 Rotate the top of the new pickup roller away from you until both sides snap into place.



- 8 Reinstall the print cartridge, and close the print cartridge door.



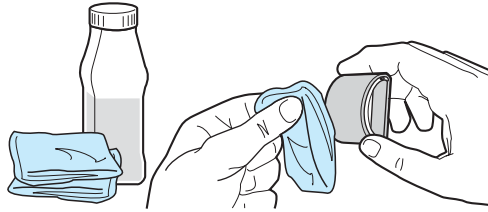
- 9 Plug the printer in to turn it back on.



Cleaning the pickup roller

If you want to clean the pickup roller rather than replace it, follow the instructions below:

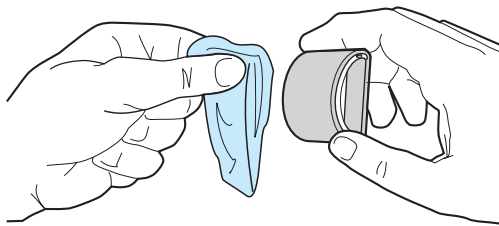
- 1 Remove the pickup roller as described in steps 1 through 5 of [Changing the pickup roller](#).
- 2 Dab a lint-free cloth in isopropyl alcohol, and scrub the roller.



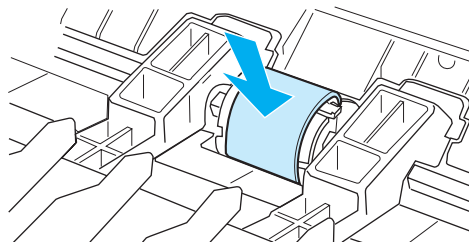
WARNING!

Alcohol is flammable. Keep the alcohol and cloth away from an open flame. Before you close the printer and plug in the power cord, allow the alcohol to dry completely.

- 3 Using a dry, lint-free cloth, wipe the pickup roller to remove loosened dirt.



- 4 Allow the pickup roller to dry completely before you reinstall it in the printer (see steps 6 through 9 of [Changing the pickup roller](#)).



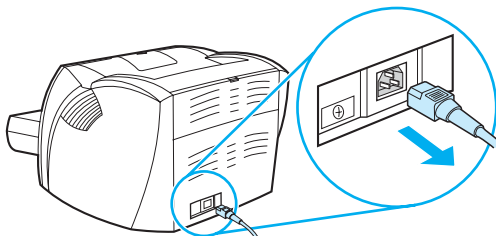
Changing the printer separation pad

Note

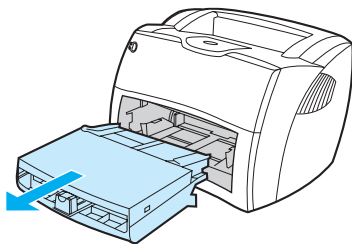
Before you change the separation pad, clean the pickup roller. Leave the pickup roller out of the printer while changing the separation pad. See [Cleaning the pickup roller](#) for instructions.

If your input tray feeds more than one page at a time, you might need to change the printer separation pad. Recurring feed problems indicate that the printer separation pad is worn. See [Ordering supplies and accessories](#) to order a new printer separation pad.

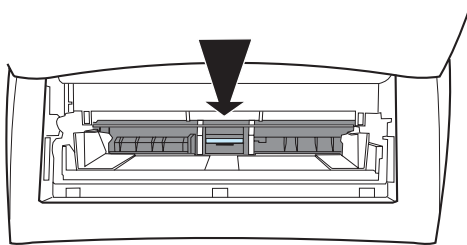
- 1 Unplug the power cord from the printer, and allow the printer to cool.



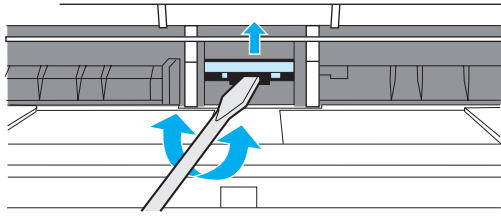
- 2 Remove the input trays.



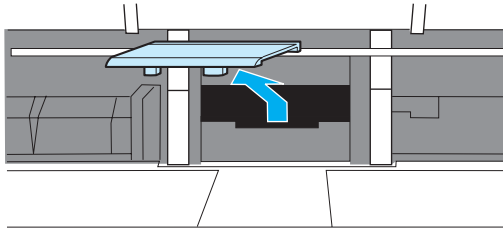
- 3 Find the blue separation pad.



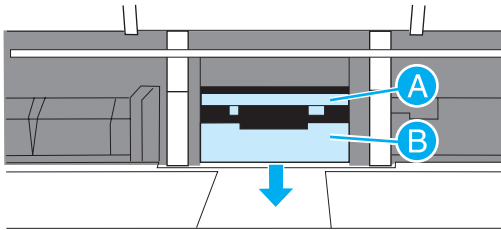
- 4 To pry the separation pad up from the spring-loaded base, insert a flat-edged screwdriver in the slot under the separation pad and twist until the tabs are free.



- 5 Reach in through the opening, push the spring-loaded base down with one hand, and pull the separation pad up with the other hand.



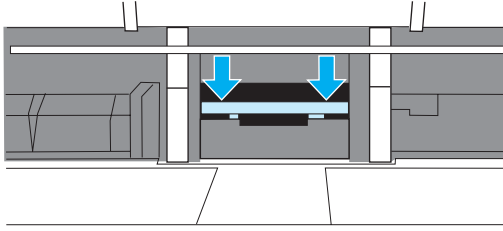
- 6 With one hand, position the new separation pad in the slot of the previous separation pad (A). With the other hand, reach through the input tray opening, and push the spring-loaded base down (B).



Note

The tab on the right is larger to help you position it correctly.

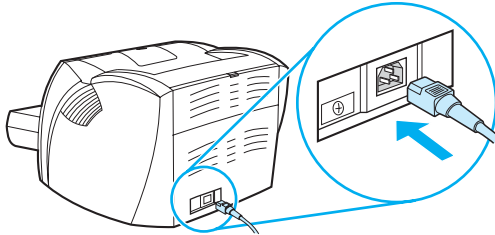
- 7 Snap both sides of the separation pad firmly into place.



CAUTION

Make sure that the separation pad is straight and that there is no space between the separation pad and the spring-loaded base. If the separation pad is not straight or you see space on one side, remove the separation pad, make sure that the larger tab is on the right, reinsert the separation pad, and snap both sides into place.

- 8 Reinsert the pickup roller, print cartridge, and input trays. Plug the printer in to turn it back on.



A Printer specifications

This appendix provides information on the following topics:

- [Specifications](#)
- [FCC compliance](#)
- [Environmental product stewardship program](#)
- [Material safety data sheet](#)
- [Regulatory statements](#)

Specifications

Printer specifications

Environmental specifications

Operating environment	Printer plugged into an AC outlet: <ul style="list-style-type: none">● Temperature: 10° C to 32.5° C (50° F to 90.5° F)● Humidity: 20 to 80 percent (no condensation)
-----------------------	--

Storage environment	Printer unplugged from an AC outlet: <ul style="list-style-type: none">● Temperature: 0° C to 40° C (32° F to 104° F)● Humidity: 10 to 80 percent (no condensation)
---------------------	--

Acoustic emissions¹

Declared per ISO 9296

HP LaserJet 1150

Sound power level	Printing (18 ppm): $L_{WA,d} = 6.1$ Bels (A) [61 dB (A)] PowerSave: essentially inaudible
-------------------	--

Sound power level bystander position	Printing (18 ppm): $L_{WA,d} = 6.1$ Bels (A) [61 dB (A)] PowerSave: essentially inaudible
---	--

HP LaserJet 1300

Sound power level	Printing (20 ppm): $L_{WA,d} = 6.1$ Bels (A) [61 dB (A)] PowerSave: essentially inaudible
-------------------	--

Sound power level bystander position	Printing (20 ppm): $L_{WA,d} = 6.1$ Bels (A) [61 dB (A)] PowerSave: essentially inaudible
---	--

HP LaserJet 1300n

Sound power level	Printing (20 ppm): $L_{WA,d} = 6.1$ Bels (A) [61 dB (A)] PowerSave: essentially inaudible
-------------------	--

Sound power level bystander position	Printing (20 ppm): $L_{WA,d} = 6.1$ Bels (A) [61 dB (A)] PowerSave: essentially inaudible
---	--

Printer specifications (continued)

Electrical specifications¹

Warning! Power requirements are based on the country/region where the printer is sold. Do not convert operating voltages. Doing so might damage the printer and void the product warranty.

HP LaserJet 1150

- Power requirements
- 110-127v (+/-10%), 50/60 Hz (+/-2)
- or**
- 220v-240v (+/-10%), 50/60 Hz (+/-2 Hz)
-

- Power consumption
- During printing (18 ppm): 285 watts (average)
 - During standby and PowerSave*: 7 Watts
- * Instant on fuser technology
- Off: 0 watts
-

- Minimum recommended circuit capacity for typical product
- 4.5 amps at 115 volts
 - 2.3 amps at 230 volts
-

HP LaserJet 1300

- Power requirements
- 110-127v (+/-10%), 50/60 Hz (+/-2)
- or**
- 220v-240v (+/-10%), 50/60 Hz (+/-2 Hz)
-

- Power consumption
- During printing (20 ppm): 285 watts (average)
 - During standby and PowerSave*: 7 Watts
- * Instant on fuser technology
- Off: 0 watts
-

- Minimum recommended circuit capacity for typical product
- 4.5 amps at 115 volts
 - 2.3 amps at 230 volts
-

HP LaserJet 1300n

- Power requirements
- 110-127v (+/-10%), 50/60 Hz (+/-2)
- or**
- 220v-240v (+/-10%), 50/60 Hz (+/-2 Hz)
-

- Power consumption
- During printing (20 ppm): 285 watts (average)
 - During standby and PowerSave*: 7 Watts
- * Instant on fuser technology
- Off: 0 watts
-

- Minimum recommended circuit capacity for typical product
- 4.5 amps at 115 volts
 - 2.3 amps at 230 volts
-

Printer specifications (continued)

Physical specifications

Dimensions	<ul style="list-style-type: none">● Width: 415 mm (16.3 inches)● Depth: 486 mm (19.1 inches)● Height: 253 mm (10.0 inches)
------------	--

Weight (cartridge installed)	8.5 kg (18.6 lb)
------------------------------	------------------

Printer capacities and ratings

Print speed	HP LaserJet 1150 printer: <ul style="list-style-type: none">● 17 ppm for A4, 18 ppm for letter● First page out in less than 10 seconds HP LaserJet 1300 series printer: <ul style="list-style-type: none">● 19 ppm for A4, 20 ppm for letter● First page out in less than 8 seconds
-------------	--

Main input tray capacity	250 sheets of regular weight 20 lb (75 g/m ²) paper or up to 30 envelopes
--------------------------	---

Priority input tray capacity	10 sheets of regular weight 20 lb (75 g/m ²) paper or 1 envelope
------------------------------	--

Output bin capacity	125 sheets of regular weight 20 lb (75 g/m ²) paper
---------------------	---

Minimum paper size	76 by 127 mm (3 by 5 inches)
--------------------	------------------------------

Maximum paper size	216 by 356 mm (8.5 by 14 inches)
--------------------	----------------------------------

Media weight	<ul style="list-style-type: none">● Output bin – 60 to 105 g/m² (16 to 28 lbs)● Straight through media path – 60 to 163 g/m² (16 to 43 lbs)
--------------	--

Base memory	8 MB of RAM (16 MB RAM on HP LaserJet 1300 series)
-------------	--

Upgrade memory expansion	HP LaserJet 1300 series printer only One DIMM slot available for an 8, 16, 32, or 64 MB RAM DIMM
--------------------------	---

Print resolution	1,200 dots per inch (dpi)
------------------	---------------------------

Duty cycle	<ul style="list-style-type: none">● 10,000 single-sided pages per month (maximum)● 1,000 single-sided pages per month (average)
------------	--

PCL	Level 5e
-----	----------

PS	PostScript 2 emulation
----	------------------------

Printer specifications (continued)

Memory specifications

DIMMs	100 pin, 66 MHz minimum speed
-------	-------------------------------

Port availability

USB	Compatible with the USB 2.0 specification
-----	---

Parallel	<ul style="list-style-type: none">● IEEE 1284 level 2 device with an IEEE 1284-B receptacle● Set host computer to ECP
----------	--

1 Values are subject to change. For current information see <http://www.hp.com/support/lj1150> or <http://www.hp.com/support/lj1300>.

FCC compliance

This equipment has been tested and found to comply with the limits for a Class B digital device, pursuant to Part 15 of the FCC rules. These limits are designed to provide reasonable protection against harmful interference in a residential installation. This equipment generates, uses, and can radiate radio frequency energy. If it is not installed and used in accordance with the instructions, it may cause harmful interference to radio communications. However, there is no guarantee that interference will not occur in a particular installation. If this equipment does cause harmful interference to radio or television reception, which can be determined by turning the equipment off and on, the user is encouraged to try to correct the interference by one or more of the following measures:

- Reorient or relocate the receiving antenna.
- Increase separation between equipment and receiver.
- Connect equipment to an outlet on a circuit different from that to which the receiver is located.
- Consult your dealer or an experienced radio/TV technician.

Note

Any changes or modifications to the printer that are not expressly approved by Hewlett-Packard could void the user's authority to operate this equipment.

Use of a shielded interface cable is required to comply with the Class B limits of Part 15 of FCC rules.

Environmental product stewardship program

Protecting the environment

Hewlett-Packard Company is committed to providing quality products in an environmentally sound manner. This product has been designed with several attributes to minimize the impact on our environment.

Ozone production

This product generates no appreciable ozone gas (O₃).

Energy consumption

Energy usage drops significantly while in PowerSave mode, which saves money without affecting the high performance of this product. This product qualifies for ENERGY STAR, which is a voluntary program to encourage the development of energy-efficient office products.



ENERGY STAR is a U.S. registered service mark of the U.S. EPA. As an ENERGY STAR partner, Hewlett-Packard Company has determined that this product meets ENERGY STAR guidelines for energy efficiency. For more information, see <http://www.energystar.gov>.

Toner consumption

EconoMode uses significantly less toner, which might extend the life of the print cartridge.

Paper use

This product's manual duplex (two-sided printing) and N-up printing (multiple pages printed on one page) features can reduce paper usage and the resulting demands on natural resources.

Plastics

Plastic parts over 25 grams are marked according to international standards that enhance the ability to identify plastics for recycling purposes at the end of the product's life.

HP LaserJet printing supplies

In many countries/regions, this product's printing supplies (such as print cartridge, drum, and fuser) can be returned to Hewlett-Packard through the HP printing supplies returns and recycling program. This easy-to-use, free takeback program is available in over 48 countries/regions. Multilingual program information and instructions are included in every new HP print cartridge and consumables package.

HP printing supplies returns and recycling program information

Since 1990, the HP printing supplies returns and recycling program has collected millions of used print cartridges that otherwise might have been discarded in the world's landfills. The HP LaserJet print cartridges and consumables are collected and bulk-shipped to our resource and recovery partners who disassemble the print cartridge. After a thorough quality inspection, selected parts are reclaimed for use in new print cartridges. Remaining materials are separated and converted into raw materials for use by other industries to make a variety of useful products.

U.S. recycling returns

For a more environmentally responsible return of used print cartridges and consumables, Hewlett-Packard encourages you to use bulk returns. Simply bundle two or more print cartridges together and use the single, prepaid, pre-addressed label that is supplied in the package. For more information in the U.S., call (800) 340-2445 or visit the HP LaserJet supplies Web site at <http://www.hp.com/recycle>.

Non-U.S. recycling returns

Non-U.S. customers should call the local HP sales and service office or visit the <http://www.hp.com/recycle> website more information regarding availability of the HP printing supplies returns and recycle program.

Paper

This printer is suited for the use of recycled papers when the paper meets the guidelines in the *HP LaserJet printer family print media guide*. See [Ordering supplies and accessories](#) for ordering information. This product is suitable for the use of recycled paper according to DIN 19309.

Material restrictions

This product does not contain added mercury (except lamps containing less than 10 mg).

This product does not contain added lead.

This product does not contain batteries.

Spare parts and supplies availability

Spare parts and consumable supplies for this product will be available for at least five years after production has stopped.

For more information

For more information on the following HP environmental programs, see <http://www.hp.com/go/environment>.

- Product environmental profile sheet for this and many related HP products
- HP's commitment to the environment
- HP's environmental management system
- HP's end-of-life product return and recycling program
- Material safety data sheets

Material safety data sheet

Material safety data sheets (MSDS) can be obtained by contacting the HP LaserJet supplies website at <http://www.hp.com/go/msds>.

Regulatory statements

Declaration of Conformity	
according to ISO/IEC Guide 22 and EN45014	
Manufacturer's Name:	Hewlett-Packard Company
Manufacturer's Address:	11311 Chinden Boulevard Boise, Idaho 83714-1021, USA
declares that the product	
Product Name:	HP LaserJet 1150 printer
Product Number:	Q1336A
Regulatory Model Number³	BOISB-0208-01
Product Options:	ALL
conforms to the following Product Specifications:	
Safety:	IEC 60950:1999 / EN 60950:2000 IEC 825-1:1993 +A1/ EN 60825-1:1994+A11 (Class 1 Laser/LED Product) GB4943:1995
EMC:	CISPR 22:1997/ EN 55022:1998 Class B ¹ EN 61000-3-2:1995/A14 EN 61000-3-3:1995 EN 55024:1998 FCC Title 47 CFR, Part 15 Class B ² / ICES-003, Issue 3 AS / NZS 3548:1995 +A1 +A2 / GB9254:1998
Supplementary Information:	
The product herewith complies with the requirements of the following EMC Directive 89/336/EEC and the Low Voltage Directive 73/23/EEC, and carries the CE-marking accordingly.	
1) The product was tested in a typical configuration with Hewlett-Packard Personal Computer Systems.	
2) This Device complies with Part 15 of the FCC Rules. Operation is subject to the following two conditions: (1) this device may not cause harmful interference, and (2) this device must accept any interference received, including interference that may cause undesired operation.	
3) For regulatory purposes, this product is assigned a Regulatory model number. This number should not be confused with the marketing name (HP LaserJet 1150 printer) or the product numbers (Q1336A).	
Boise, Idaho USA April 1, 2003	
For Regulatory Topics ONLY, contact:	
Australia Contact:	Product Regulations Manager, Hewlett-Packard Australia Ltd., 31-41 Joseph Street, Blackburn, Victoria 3130, Australia
European Contact:	Your Local Hewlett-Packard Sales and Service Office or Hewlett-Packard GmbH, Department HQ-TRE / Standards Europe, Herrenberger Straße 140, D-71034 Böblingen (FAX: +49-7031-14-3143)
USA Contact:	Product Regulations Manager, Hewlett-Packard Company, PO Box 15 Mail Stop 160, Boise, ID 83707-0015 (Phone: 208-396-6000)

Declaration of Conformity

according to ISO/IEC Guide 22 and EN45014

Manufacturer's Name: Hewlett-Packard Company
Manufacturer's Address: 11311 Chinden Boulevard
Boise, Idaho 83714-1021, USA

declares that the product

Product Name: HP LaserJet 1300 series
Product Number: Q1334A, Q1335A, Q2484A
Regulatory Model Number³ BOISB-0208-00
Product Options: ALL

conforms to the following Product Specifications:

Safety: IEC 60950:1999 / EN 60950:2000
IEC 825-1:1993 +A1/ EN 60825-1:1994+A11 (Class 1 Laser/LED Product)
GB4943:1995
EMC: CISPR 22:1997/ EN 55022:1998 Class B¹
EN 61000-3-2:1995/A14
EN 61000-3-3:1995
EN 55024:1998
FCC Title 47 CFR, Part 15 Class B² / ICES-003, Issue 3
AS / NZS 3548:1995 +A1 +A2 / GB9254:1998

Supplementary Information:

The product herewith complies with the requirements of the following EMC Directive 89/336/EEC and the Low Voltage Directive 73/23/EEC, and carries the CE-marking accordingly.

- 1) The product was tested in a typical configuration with Hewlett-Packard Personal Computer Systems.
- 2) This Device complies with Part 15 of the FCC Rules. Operation is subject to the following two conditions: (1) this device may not cause harmful interference, and (2) this device must accept any interference received, including interference that may cause undesired operation.
- 3) For regulatory purposes, this product is assigned a Regulatory model number. This number should not be confused with the marketing name (HP LaserJet 1300 series) or the product numbers (Q1334A, Q1335A, Q2484A).

**Boise, Idaho USA
April 1, 2003**

For Regulatory Topics ONLY, contact:

Australia Contact: Product Regulations Manager, Hewlett-Packard Australia Ltd.,
31-41 Joseph Street, Blackburn, Victoria 3130, Australia
European Contact: Your Local Hewlett-Packard Sales and Service Office or
Hewlett-Packard GmbH, Department HQ-TRE / Standards
Europe, Herrenberger Straße 140, D-71034 Böblingen
(FAX: +49-7031-14-3143)
USA Contact: Product Regulations Manager, Hewlett-Packard Company,
PO Box 15 Mail Stop 160, Boise, ID 83707-0015
(Phone: 208-396-6000)

Laser safety statement

The Center for Devices and Radiological Health (CDRH) of the U.S. Food and Drug Administration has implemented regulations for laser products manufactured since August 1, 1976. Compliance is mandatory for products marketed in the United States. The printer is certified as a “Class 1” laser product under the U.S. Department of Health and Human Services (DHHS) Radiation Performance Standard according to the Radiation Control for Health and Safety Act of 1968.

Since radiation emitted inside the printer is completely confined within protective housings and external covers, the laser beam cannot escape during any phase of normal user operation.

WARNING!

Using controls, making adjustments, or performing procedures other than those specified in this user guide could result in exposure to hazardous radiation.

Canadian DOC regulations

Complies with Canadian EMC Class B requirements.

«Conforme à la classe B des normes canadiennes de compatibilité électromagnétiques. «CEM».»

Korean EMI statement

사용자 안내문 (B급 기기)

이 기기는 비업무용으로 전자파장애검정을 받은 기기로서, 주거지역에서는 물론 모든 지역에서 사용할 수 있습니다.

VCCI statement (Japan)

この装置は、情報処理装置等電波障害自主規制協議会（VCCI）の基準に基づくクラスB情報技術装置です。この装置は、家庭環境で使用することを目的としていますが、この装置がラジオやテレビジョン受信機に近接して使用されると、受信障害を引き起こすことがあります。
取り扱い説明書に従って正しい取り扱いをして下さい。

Laser statement for Finland

LASERTURVALLISUUS

LUOKAN 1 LASERLAITE

KLASS 1 LASER APPARAT

HP LaserJet 1150, 1300 -laserkirjoitin on käyttäjän kannalta turvallinen luokan 1 laserlaite. Normaalisissa käytössä kirjoittimen suojakotelo estää lasersäteiden pääsyn laitteen ulkopuolelle.

Laitteen turvallisuusluokka on määritetty standardin EN 60825-1 (1993) mukaisesti.

VAROITUS!

Laitteen käyttäminen muulla kuin käyttöohjeessa mainitulla tavalla saattaa altistaa käyttäjän turvallisuusluokan 1 ylittävälle näkymättömälle lasersäteilylle.

VARNING!

Om apparaten används på annat sätt än i bruksanvisning specificerats, kan användaren utsättas för osynlig laserstrålning, som överskrider gränsen för laserklass 1.

HUOLTO

HP LaserJet 1150, 1300 -kirjoittimen sisällä ei ole käyttäjän huollettavissa olevia kohteita. Laitteen saa avata ja huoltaa ainoastaan sen huoltamiseen koulutettu henkilö. Tällaiseksi huoltotoimenpiteeksi ei katsota väriainekasetin vaihtamista, paperiradan puhdistusta tai muita käyttäjän käsikirjassa lueteltuja, käyttäjän tehtäväksi tarkoitettuja ylläpitotoimia, jotka voidaan suorittaa ilman erikoistyökaluja.

VARO!

Mikäli kirjoittimen suojakotelo avataan, olet alttiina näkymättömälle lasersäteilylle laitteen ollessa toiminnassa. Älä katso säteeseen.

VARNING!

Om laserprinterns skyddshölje öppnas då apparaten är i funktion, utsättas användaren för osynlig laserstrålning. Betrakta ej strålen.

Tiedot laitteessa käytettävän laserdiodin säteilyominaisuuksista:

Aallonpituus 770-795 nm

Teho 5 mW

Luokan 3B laser

B Media specifications

This appendix provides information on the following topics:

- [Printer media specifications](#)
- [Supported media sizes](#)
- [Guidelines for using media](#)

Printer media specifications

HP LaserJet printers produce excellent print quality. The printer accepts a variety of media, such as cut-sheet paper (including recycled paper), envelopes, labels, transparencies, vellum, and custom-sized paper. Properties such as weight, grain, and moisture content are important factors affecting printer performance and output quality.

The printer can use a variety of paper and other print media in accordance with the guidelines in this user guide. Media that does not meet these guidelines might cause the following problems:

- Poor print quality
- Increased media jams
- Premature wear on the printer, requiring repair

For best results, use only HP brand paper and print media. Hewlett-Packard Company cannot recommend the use of other brands. Because they are not HP products, HP cannot influence or control their quality.

It is possible for media to meet all of the guidelines in this user guide and still not produce satisfactory results. This might be the result of improper handling, unacceptable temperature and humidity levels, or other variables over which Hewlett-Packard has no control.

Before you purchase a large quantity of media, make sure that it meets the requirements specified in this user guide and in *Guidelines for Paper and Other Print Media*. (See [Ordering supplies and accessories](#) for more information about ordering the guidelines.) Always test media before you purchase a large quantity.

CAUTION

Using media that does not meet Hewlett-Packard's specifications might cause problems for the printer, requiring repair. This repair is not covered by the Hewlett-Packard warranty or service agreements.

Supported media sizes

The following are the supported media sizes:

- **Minimum:** 76 x 127 mm (3 x 5 in.)
- **Maximum:** 216 x 356 mm (8.5 x 14 in.)

Guidelines for using media

Paper

For best results, use conventional 20 lb (75 g/m²) paper. Make sure that the paper is of good quality and free of cuts, nicks, tears, spots, loose particles, dust, wrinkles, voids, and curled or bent edges.

If you are unsure about what type of paper you are loading (such as bond or recycled), check the label on the package of paper.

Some paper causes print quality problems, jamming, or damage to the printer.

Paper usage

Symptom	Problem with paper	Solution
Poor print quality or toner adhesion. Problems with feeding.	Too moist, too rough, too smooth, or embossed. Faulty paper lot.	Try another kind of paper: between 100-250 Sheffield and 4-6 percent moisture content.
Dropouts, jamming, or curl.	Stored improperly.	Store paper flat in its moisture-proof wrapping.
Increased gray background shading.	Might be too heavy.	Use lighter paper.
Excessive curl. Problems with feeding.	Too moist, wrong grain direction, or short-grain construction.	Use long-grain paper. Print using the straight-through output path.
Jamming or damage to printer.	Cutouts or perforations.	Do not use paper with cutouts or perforations.
Problems with feeding.	Ragged edges.	Use good quality paper.

Note

The printer uses heat and pressure to fuse toner to the paper. Make sure that any colored paper or preprinted forms use inks that are compatible with the printer temperature (200° C or 392° F for 0.1 second).

Do not use letterhead that is printed with low-temperature inks, such as those used in some types of thermography.

Do not use raised letterhead.

Do not use transparencies designed for inkjet printers or other low temperature printers. Use only transparencies that are specified for use with HP LaserJet printers.

Labels

Label construction

When selecting labels, consider the quality of the following components:

- **Adhesives:** The adhesive material should be stable at 200° C (392° F), the printer's maximum temperature.
- **Arrangement:** Only use labels with no exposed backing between them. Labels can peel off sheets that have spaces between the labels, causing serious jams.
- **Curl:** Prior to printing, labels must lie flat with no more than 13 mm (0.5 in.) of curl in any direction.
- **Condition:** Do not use labels with wrinkles, bubbles, or other indications of separation.

Transparencies

Transparencies must be able to withstand 200° C (392° F), the printer's maximum temperature.

Envelopes

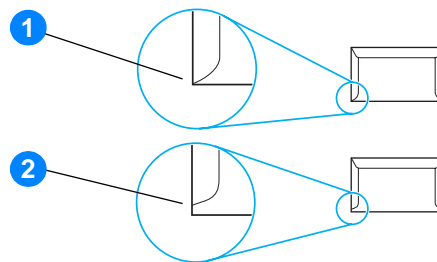
Envelope construction

Envelope construction is critical. Envelope fold lines can vary considerably, not only between manufacturers, but also within a box from the same manufacturer. Successful printing on envelopes depends upon the quality of the envelopes. When selecting envelopes, consider the following components:

- **Weight:** The weight of the envelope paper should not exceed 28 lb (105 g/m²), or jamming might result.
- **Construction:** Prior to printing, envelopes should lie flat with less than 6 mm (0.25 in.) curl and should not contain air. Envelopes that trap air may cause problems.
- **Condition:** Make sure that the envelopes are not wrinkled, nicked, or otherwise damaged.
- **Sizes:** From 90 x 160 mm (3.5 x 6.3 in.) to 178 x 254 mm (7 x 10 in.).

Envelopes with double-side seams

An envelope with double-side-seam construction has vertical seams at both ends of the envelope rather than diagonal seams. This style might be more likely to wrinkle. Make sure that the seam extends all the way to the corner of the envelope as shown in the following illustration:



- 1 acceptable envelope construction
- 2 unacceptable envelope construction

Envelopes with adhesive strips or flaps

Envelopes with a peel-off adhesive strip or with more than one flap that folds over to seal must use adhesives compatible with the heat and pressure in the printer: 200° C (392° F). The extra flaps and strips might cause wrinkling, creasing, or jams.

Envelope storage

Proper storage of envelopes contributes to good print quality. You should store envelopes flat. If air is trapped in an envelope, creating an air bubble, the envelope might wrinkle during printing.

Card stock and heavy media

You can print many types of card stock from the paper input tray, including index cards and postcards. Some card stock performs better than others because its construction is better suited for feeding through a laser printer.

For optimum printer performance, do not use paper heavier than 42 lb (157 g/m²). Paper that is too heavy might cause misfeeds, stacking problems, paper jams, poor toner fusing, poor print quality, or excessive mechanical wear.

Note

You might be able to print on heavier paper if you do not fill the input tray to capacity and if you use paper with a smoothness rating of 100-180 Sheffield.

Card stock construction

- **Smoothness:** 36-42 lb (135-157 g/m²) card stock should have a smoothness rating of 100-180 Sheffield. 16-36 lb (60-135 g/m²) card stock should have a smoothness rating of 100-250 Sheffield.
- **Construction:** Card stock should lie flat with less than 5 mm (0.2 in.) of curl.
- **Condition:** Make sure that the card stock is not wrinkled, nicked, or otherwise damaged.
- **Sizes:** Only use card stock within the following size ranges:
 - **Minimum:** 76 x 127 mm (3 x 5 in.)
 - **Maximum:** 216 x 356 mm (8.5 x 14.0 in.)

Card stock guidelines

Set margins at least 2 mm (0.08 in.) away from the edges.

C Warranty and licensing

This appendix provides information on the following topics:

- [Hewlett-Packard software license agreement](#)
- [Hewlett-Packard limited warranty statement](#)
- [Limited warranty for print cartridge life](#)
- [Hardware service](#)
- [Extended warranty](#)
- [Guidelines for repacking the printer](#)
- [How to contact HP](#)

Hewlett-Packard software license agreement

ATTENTION: USE OF THE SOFTWARE IS SUBJECT TO THE HP SOFTWARE LICENSE TERMS SET FORTH BELOW. USING THE SOFTWARE INDICATES YOUR ACCEPTANCE OF THESE LICENSE TERMS.

HP SOFTWARE LICENSE TERMS

The following License Terms govern your use of the accompanying Software unless you have a separate signed agreement with Hewlett-Packard.

License Grant. Hewlett-Packard grants you a license to use one copy of the Software. “Use” means storing, loading, installing, executing, or displaying the Software. You may not modify the Software or disable any licensing or control features of the Software. If the Software is licensed for “concurrent use,” you may not allow more than the maximum number of authorized users to Use the Software concurrently.

Ownership. The Software is owned and copyrighted by Hewlett-Packard or its third-party suppliers. Your license confers no title to, or ownership in, the Software and is not a sale of any rights in the Software. Hewlett-Packard’s third-party suppliers may protect their rights in the event of any violation of these License Terms.

Copies and Adaptations. You may only make copies or adaptations of the Software for archival purposes or when copying or adaptation is an essential step in the authorized Use of the Software. You must reproduce all copyright notices in the original Software on all copies or adaptations. You may not copy the Software onto any public network.

No Disassembly or Decryption. You may not disassemble or decompile the Software unless HP’s prior written consent is obtained. In some jurisdictions, HP’s consent may not be required for limited disassembly or decompilation. Upon request, you will provide HP with reasonably detailed information regarding any disassembly or decompilation. You may not decrypt the Software unless decryption is a necessary part of the operation of the Software.

Transfer. Your license will automatically terminate upon any transfer of the Software. Upon transfer, you must deliver the Software, including any copies and related documentation, to the transferee. The transferee must accept these License Terms as a condition to the transfer.

Termination. HP may terminate your license upon notice for failure to comply with any of these License Terms. Upon termination, you must immediately destroy the Software, together with all copies, adaptations, and merged portions in any form.

Export Requirements. You may not export or re-export the Software or any copy or adaptation in violation of any applicable laws or regulations.

U.S. Government Restricted Rights. The Software and any accompanying documentation have been developed entirely at private expense. They are delivered and licensed as “commercial computer software” as defined in DFARS 252.227-7013 (Oct 1988), DFARS 252.211-7015 (May 1991), or DFARS 252.227-7014 (Jun 1995), as a “commercial item” as defined in FAR 2.101(a) (Jun 1987), or as “Restricted computer software” as defined in FAR 52.227-19 (Jun 1987) (or any equivalent agency regulation or contract clause), whichever is applicable. You have only those rights provided for such Software and any accompanying documentation by the applicable DFARS or FAR clause or the HP standard software agreement for the product involved.

Hewlett-Packard limited warranty statement

DURATION OF WARRANTY:

One year from date of purchase.

1. HP warrants to you, the end-user customer, that HP hardware, accessories, and supplies, will be free from defects in materials and workmanship after the date of purchase, for the period specified above. If HP receives notice of such defects during the warranty period, HP will, at its option, either repair or replace products which prove to be defective. Replacement products may be either new or like-new.
2. HP warrants to you that HP software will not fail to execute its programming instructions after the date of purchase, for the period specified above, due to defects in material and workmanship when properly installed and used. If HP receives notice of such defects during the warranty period, HP will replace software media which does not execute its programming instructions due to such defects.
3. HP does not warrant that the operation of HP products will be uninterrupted or error free. If HP is unable, within a reasonable time, to repair or replace any product to a condition as warranted, you will be entitled to a refund of the purchase price upon prompt return of the product.
4. HP products may contain remanufactured parts equivalent to a new in performance or may have been subject to incidental use.
5. Warranty does not apply to defects resulting from (a) improper or inadequate maintenance or calibration, (b) software, interfacing, parts or supplies not supplied by HP, (c) unauthorized modification or misuse, (d) operation outside of the published environmental specifications for the product, or (d) improper site preparation or maintenance.
6. **HP MAKES NO OTHER EXPRESS WARRANTY OR CONDITION WHETHER WRITTEN OR ORAL. TO THE EXTENT ALLOWED BY LOCAL LAW, ANY IMPLIED WARRANTY OR CONDITION OR MERCHANTABILITY, SATISFACTORY QUALITY, OR FITNESS FOR A PARTICULAR PURPOSE IS LIMITED TO THE DURATION OF THE EXPRESS WARRANTY SET FORTH ABOVE.** Some countries/regions, states, or provinces do not allow limitations on the duration of an implied warranty, so the above limitation or exclusion might not apply to you. This warranty gives you specific legal rights and you might also have other rights that vary from country/region to country/region, state to state, or province to province.
7. **TO THE EXTENT ALLOWED BY LOCAL LAW, THE REMEDIES IN THIS WARRANTY STATEMENT ARE YOUR SOLE AND EXCLUSIVE REMEDIES. EXCEPT AS INDICATED ABOVE, IN NO EVENT WILL HP OR ITS SUPPLIERS BE LIABLE FOR LOSS OF DATA OR FOR DIRECT, SPECIAL, INCIDENTAL, CONSEQUENTIAL (INCLUDING LOST PROFIT OR DATA), OR OTHER DAMAGE, WHETHER BASED IN CONTRACT, TORT, OR OTHERWISE.** Some countries/regions, states, or provinces do not allow the exclusion or limitation of incidental or consequential damages, so the above limitation or exclusion may not apply to you.

FOR CONSUMER TRANSACTIONS IN AUSTRALIA AND NEW ZEALAND; THE WARRANTY TERMS CONTAINED IN THIS STATEMENT, EXCEPT TO THE EXTENT LAWFULLY PERMITTED, DO NOT EXCLUDE, RESTRICT OR MODIFY AND ARE IN ADDITION TO THE MANDATORY STATUTORY RIGHTS APPLICABLE TO THE SALE OF THIS PRODUCT TO YOU.

Limited warranty for print cartridge life

Note

The following warranty applies to the print cartridge that came with this printer.

HP print cartridges are warranted to be free from defects in materials and workmanship until the HP toner is depleted. The warranty covers any defects or malfunctions in a new HP print cartridge.

Frequently asked questions

How long does the coverage last?

The coverage lasts until the HP toner is depleted, at which time the warranty expires.

How do I know when the HP toner is running out?

The HP toner is depleted and the print cartridge has reached the end of its useful life when faded or light type appears on the printed page or when a print cartridge life-low message appears on the computer screen.

What will Hewlett-Packard do?

Hewlett-Packard will, at its option, either replace products that prove to be defective or refund the purchase price. If possible, please attach a printout sample illustrating what the defective print cartridge is printing.

What does this warranty not cover?

The warranty does not cover print cartridges that have been refilled or are emptied, abused, misused, or tampered with in any way.

How do I return the faulty print cartridge?

In the event that the print cartridge proves to be defective, complete the Service Information Form and attach a print sample illustrating the defect. Return the form and print cartridge to the place of purchase, where the print cartridge will be replaced.

How does State, Province, or Country/Region Law apply?

This limited warranty gives you specific legal rights, and you may also have other rights which vary from state to state, province to province, or country/region to country/region. This limited warranty is the sole warranty on the HP print cartridge and supersedes any other warranty relating to this product.

IN NO EVENT SHALL HEWLETT-PACKARD COMPANY BE LIABLE FOR ANY INCIDENTAL, CONSEQUENTIAL, SPECIAL, INDIRECT, PUNITIVE, OR EXEMPLARY DAMAGES OR LOST PROFITS FROM ANY BREACH OF THIS WARRANTY OR OTHERWISE.

FOR CONSUMER TRANSACTIONS IN AUSTRALIA AND NEW ZEALAND; THE WARRANTY TERMS CONTAINED IN THIS STATEMENT, EXCEPT TO THE EXTENT LAWFULLY PERMITTED, DO NOT EXCLUDE, RESTRICT OR MODIFY AND ARE IN ADDITION TO THE MANDATORY STATUTORY RIGHTS APPLICABLE TO THE SALE OF THIS PRODUCT TO YOU.

Hardware service

If your hardware fails during the warranty period, Hewlett-Packard offers the following support options:

- **Hewlett-Packard repair services:** Hewlett-Packard will arrange to pick up the unit, repair it, and return it to you within 5 to 10 days, depending on your location.
- **Hewlett-Packard authorized service provider:** You can return the unit to a local authorized service dealer.

Extended warranty

HP SupportPack provides coverage for the HP product and all HP-supplied internal components. The hardware maintenance covers a three-year period from date of the HP product purchase. The customer must purchase HP SupportPack within 180 days of the HP product purchase. For more information, contact the HP Customer Care Service and Support group. See [Quick access to more information](#).

Guidelines for repacking the printer

Use the following guidelines when repacking the printer:

- If possible, include print samples and 5 to 10 sheets of paper or other media that did not print correctly.
- Remove and keep any DIMMs (memory) installed in the printer. See [Installing a memory DIMM \(1300 series only\)](#) for more information.

CAUTION

Static electricity can damage DIMMs. When handling DIMMs, either wear a grounded antistatic wrist strap or frequently touch the surface of the DIMMs' antistatic package before touching bare metal on the printer.

- Remove and keep any cables, trays, and optional accessories installed in the printer.
- Remove and keep the print cartridge.

CAUTION

To prevent damage to the print cartridge, store the print cartridge in its original packing material, or store it so that it is not exposed to light.

- If possible, use the original shipping container and packing material. *Shipping damage as a result of inadequate packing is your responsibility.* If you have already disposed of the printer's packing material, contact a local mailing service for information on repacking the printer.
- Include a completed copy of the service information form.
- Hewlett-Packard recommends that you insure the equipment for shipment.

How to contact HP

If you need to contact HP for service or support, use one of the following links:

- In the United States, see <http://www.hp.com/support/lj1150> for the HP LaserJet 1150 printer, or see <http://www.hp.com/support/lj1300> for the HP LaserJet 1300 series printer.
- In other locations, see <http://www.hp.com>

D Ordering supplies and accessories

Ordering supplies and accessories

You can increase the printer's capabilities with optional accessories and supplies. Use accessories and supplies specifically designed for the HP LaserJet 1150 and HP LaserJet 1300 series printers to ensure optimum performance.

To order supplies, see <http://www.hp.com/support/lj1150> or <http://www.hp.com/support/lj1300>.

The HP LaserJet 1300 series printer features Smart Printing Supplies. When you print a Configuration page by pressing and holding the **Go** button for 5 seconds, a Supplies Status page prints after the Configuration page. The Supplies Status page has information on the amount of toner remaining in the print cartridge, part numbers for ordering supplies, and whether the installed print cartridge is a genuine HP supply item.

Supplies and accessories

Ordering information

	Item	Description or use	Order number
Printing supplies	HP Multipurpose paper	HP brand paper for a variety of uses (1 box of 10 reams, 500 sheets each). To order a sample, in the U.S., call 1-800-471-4701.	HPM1120
	HP LaserJet paper	Premium HP brand paper for use with HP LaserJet printers (1 box of 10 reams, 500 sheets each). To order a sample, in the U.S., call 1-800-471-4701.	HPJ1124
	HP LaserJet transparency film	HP brand transparency film for use with HP LaserJet monochrome printers.	92296T (letter) 92296U (A4)

Ordering information (continued)

	Item	Description or use	Order number
Print cartridge for the HP LaserJet 1150 printer	UltraPrecise print cartridge	Replacement print cartridges for the HP LaserJet 1300 series printers.	Q2624A
Print cartridges for the HP LaserJet 1300 series printer	UltraPrecise print cartridges	Replacement print cartridges for the HP LaserJet 1300 series printers.	Q2613A (2,500-page cartridge) Q2613X (4,000-page cartridge)
Supplementary documentation	<i>HP LaserJet family print media guide</i>	A guide to using paper and other print media with HP LaserJet printers.	5963-7863
Replacement parts	Media pickup roller	Used to pick the media from the input tray and advance it through the printer.	RF0-1008CN
	Input tray	Used to hold media for the printer.	RM1-0553-000CN
	Input tray cover	Used to cover the media in the input tray.	RM1-0554-000CN
	Separation pad for the printer	Used to keep multiple sheets from feeding through the printer path.	RF0-1007CN
Accessories	250-sheet paper feeder	This is an accessory for the HP LaserJet 1300 series printer. It provides an additional 250-sheet input tray.	Q2485A

10/100 networking and wireless print servers

Ordering information

hp LaserJet 1150 printer

Item and description	Order number
HP Jetdirect 175x fast-ethernet external print server (value line, USB port)	J6035B
HP Jetdirect 310x fast-ethernet external print server (full featured, USB port)	J6038A
HP Jetdirect 380x 802.11b wireless external print server (full featured, USB port)	J6061A
HP Jetdirect WP110 802.11b wireless print server (value line, parallel port)	J6062A
Bluetooth wireless printer adaptor for parallel port printers	MPIPA330

hp LaserJet 1300 series printer

Item and description	Order number
HP Jetdirect 200m fast-ethernet print server for LIO peripherals (value line)	J6039B
HP Jetdirect 250m fast-ethernet LIO print server (full featured)	J6042B
HP Jetdirect 280m 802.11b wireless LIO print server (full featured)	J6044A
HP Jetdirect 175x fast-ethernet external print server (value line, USB port)	J6035B
HP Jetdirect 310x fast-ethernet external print server (full featured, USB port)	J6038A
HP Jetdirect 380x 802.11b wireless external print server (full featured, USB port)	J6061A
HP Jetdirect WP110 802.11b wireless print server (value line, parallel port)	J6062A
Bluetooth wireless printer adaptor for parallel port printers	MPIPA330

E Network configuration

Installing a shared printer on Windows 98 and Millennium

- 1 Quit all programs.
- 2 From the Windows system tray, click **Start**, select **Settings**, and click **Printers**.
- 3 Double-click the **Add Printer** icon.
- 4 In the Add Printer Wizard, click **Next**.
- 5 Select **Network printer**, and click **Next**.
- 6 Type the network share name in **Network path or queue name** (for example, \\computer_name\printer_share_name), and click **Next**.
- 7 Click **Have Disk**.
- 8 Click **Browse**.
- 9 In the Open dialog, select the CD-ROM drive, select the appropriate .inf file, and click **OK**.
- 10 Select the HP LaserJet 1150 or HP LaserJet 1300 printer driver from the list, and click **Next**.
- 11 If you want to change the default printer name, type the new name in **Printer name**.
- 12 Click **Next**.
- 13 Select **Yes**, and click **Finish**. A test page prints verifying that the printer is set up properly.

Installing a shared printer on Windows 2000

- 1 Quit all programs.
- 2 From the Windows system tray, click **Start**, select **Settings**, and click **Printers**.
- 3 Double-click the **Add Printer** icon.
- 4 In the Add Printer Wizard, click **Next**.
- 5 Select **Local printer**, clear the **Automatically detect and install my Plug and Play printer** check box, and click **Next**.
- 6 Select **Create a new port**, select **Local Port** from the **Type** drop-down list, and click **Next**.
- 7 In the dialog displayed, type the new port name (for example, \\computer_name\printer_share_name), and click **OK**.
- 8 Select **Use the following port**, select the port name that you just created from the list, and click **Next**.
- 9 Click **Have Disk**.
- 10 Click **Browse**.
- 11 In the Open dialog, select the CD-ROM drive, select the appropriate .inf file, and click **Open**.
- 12 Click **OK**.
- 13 Select the HP LaserJet 1150 or HP LaserJet 1300 printer driver from the list, and click **Next**.
- 14 If you want to change the default printer name, type the new name in **Printer name**.
- 15 Click **Next**.
- 16 Click **Next**.
- 17 Select **Yes**, and click **Next**.
- 18 Click **Finish**. A test page prints verifying that the printer is set up properly.

Installing a shared printer on Windows XP

- 1 Quit all programs.
- 2 From the Windows system tray, click **Start**, and select **Control Panel**.
- 3 Double-click **Printers and Other Hardware**.
- 4 Click **Add a printer**.
- 5 In the Add Printer Wizard, click **Next**.
- 6 Select **Local printer**, clear the **Automatically detect and install my Plug and Play printer** check box, and click **Next**.
- 7 Select **Create a new port**, select **Local Port** from the **Type** drop-down list, and click **Next**.
- 8 In the dialog displayed, type the new port name (for example, \\computer_name\printer_share_name), and click **OK**.
- 9 Select **Use the following port**, select the port name that you just created from the list, and click **Next**.
- 10 Click **Have Disk**.
- 11 Click **Browse**.
- 12 In the Open dialog, select the CD-ROM drive, select the appropriate .inf file, and click **Open**.
- 13 Click **OK**.
- 14 Select the HP LaserJet 1150 or HP LaserJet 1300 printer driver from the list, and click **Next**.
- 15 If you want to change the default printer name, type the new name in **Printer name**.
- 16 Click **Next**.
- 17 Click **Next**.
- 18 Select **Yes**, and click **Next**.
- 19 Click **Finish**. A test page prints verifying that the printer is set up properly.

F Memory

This appendix provides information on the following topics:

- [Installing a memory DIMM \(1300 series only\)](#)
- [Testing the DIMM installation](#)
- [Removing a DIMM](#)

Installing a memory DIMM (1300 series only)

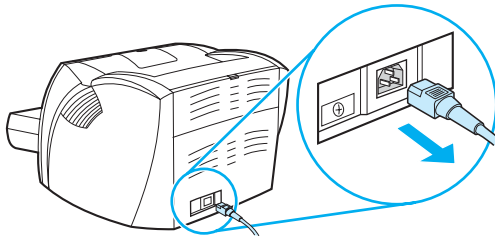
If you add memory (RAM only) to the HP LaserJet 1300 series printer, you can print more complex print jobs.

To install a DIMM, follow the instructions below:

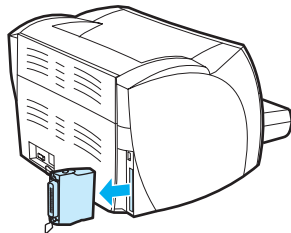
CAUTION

Handling a DIMM chip (memory) without wearing a grounded, antistatic device might damage the DIMM chip. Touch the printer or a piece of sheet metal before touching the DIMM.

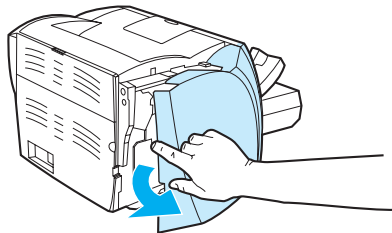
- 1 Turn off the power switch, and unplug the printer.



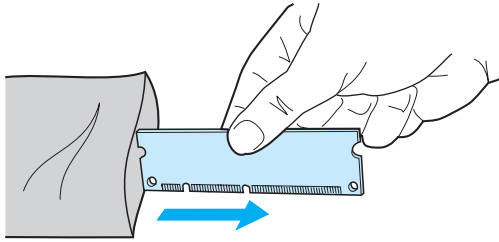
- 2 Remove the parallel adaptor or the print server from the LIO connectivity slot.



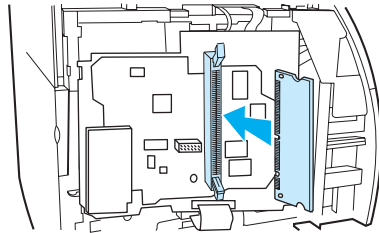
- 3 Open the print cartridge door. To open the left side panel, gently pull it out.



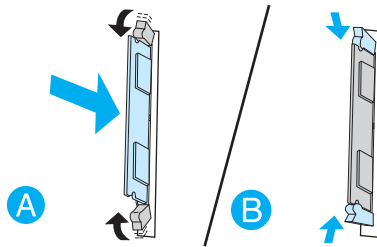
- 4 Remove the DIMM chip from the antistatic bag it came in, grasping the chip on the top edge.



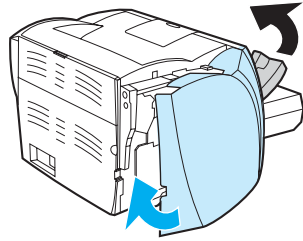
- 5 Position the DIMM chip in front of the slot located inside the I/O door. The gold contacts should be pointing toward the printer and the cutouts should be at the top and bottom.



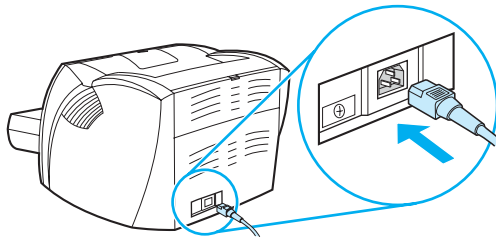
- 6 Carefully press the DIMM chip into the slot, making sure that it is straight and all the way in (A). The cam latches, located at the top and bottom, should rotate inward. To snap the cam latches into place, press the handles toward each other (B).



- 7 Close the left side panel and the print cartridge door. Reinstall the parallel adaptor or the print server.



- 8 Plug the printer back in, and turn on the power switch.



Testing the DIMM installation

To test the DIMM installation, print a configuration page, and check the Total Memory specified on the page. See [Printer information pages](#) for more information.

If all lights on the control panel are blinking, the DIMM installation was unsuccessful. Remove the DIMM and reinstall it.

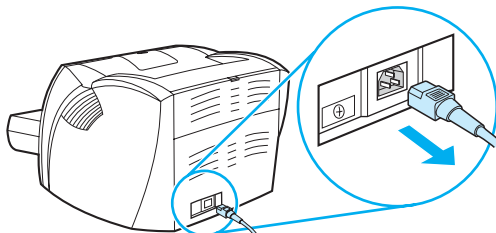
Removing a DIMM

To remove a DIMM, follow the instructions below:

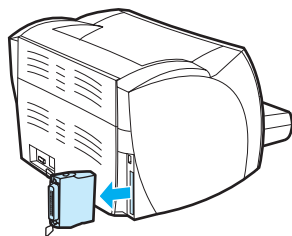
CAUTION

Handling a DIMM chip (memory) without wearing a grounded, antistatic device might damage the DIMM chip. Touch the printer or a piece of sheet metal before touching the DIMM.

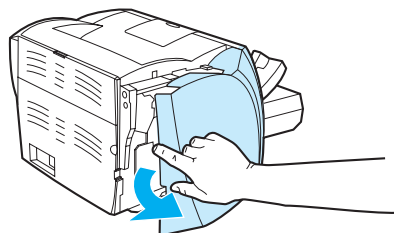
- 1 Turn off the power switch, and unplug the printer.



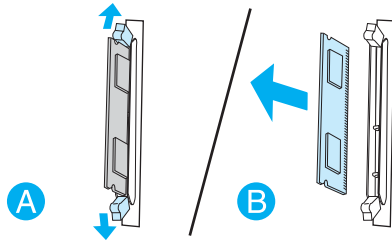
- 2 Remove the parallel adaptor or the print server from the LIO connectivity slot.



- 3 Open the print cartridge door. To open the left side panel, gently pull it out.



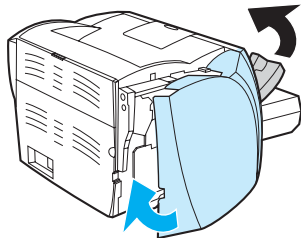
- To unlock the cam latches, press them outward (A). Grasp the DIMM chip on the edge, gently pull straight out, and remove the chip from the printer (B).



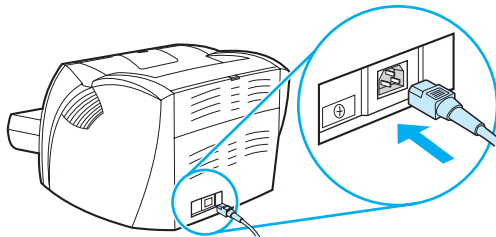
Note

Store the DIMM chip in an antistatic bag.

- Close the left side panel and the print cartridge door. Reinstall the parallel adaptor or the print server.



- Plug the printer back in, and turn on the power switch.



G Working with the print server

The HP LaserJet 1300n printer comes with an HP Jetdirect 200m print server. If you have an HP LaserJet 1150 printer or an HP LaserJet 1300 printer, you can order a variety of print servers from HP. See [Ordering supplies and accessories](#) for more information.

The information in this appendix is based on the HP Jetdirect 200m print server. Be aware that if you order a different print server, some of the following information might not apply.

This appendix provides information on the following topics:

- [Installing the print server](#)
- [Printing a configuration page](#)
- [Using the print server's embedded Web server](#)
- [Changing the IP address](#)
- [Troubleshooting the print server](#)
- [Restoring the factory default settings](#)

Installing the print server

Insert the HP Jetdirect 200m print server into the LIO connectivity slot on the back of the printer. Push the print server into the slot until it seats firmly and the latches click into place. See [Network connections](#) for more information.

The software for the print server is on the CD-ROM that comes with the HP LaserJet 1300n printer. If you ordered the print server separately from the printer, the print server comes with a CD-ROM containing the software.

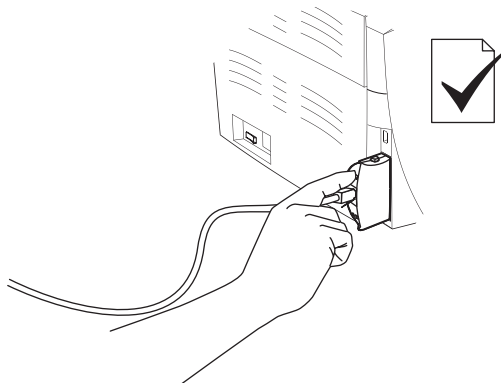
To install the print server software

- 1 Insert the CD into the computer's CD-ROM drive.
- 2 The setup program should start automatically. If the setup program does not start, browse to the CD-ROM drive and double-click **SETUP.EXE**.
- 3 Click **Install** to start the installation, and follow the on-screen instructions.

Printing a configuration page

The print server configuration page contains messages, network statistics, and status for the print server. The configuration page also lists the print server's IP address.

You can print the configuration page by pressing the Test button on the back of the print server.



You can also view the configuration page through the print server's embedded Web server. See [Using the print server's embedded Web server](#) for more information.

Using the print server's embedded Web server

The HP Jetdirect 200m print server has an embedded Web server that allows you to configure various print server parameters in a standard Web browser. The print server's supported Web browsers are Internet Explorer version 5.0 or later and Netscape Navigator version 4.75 or later.

To use the print server's embedded Web server, open the browser and type the print server's IP address as the URL. Print a configuration page to find the IP address. See [Printing a configuration page](#) for more information.

Changing the IP address

The easiest way to change the print server's IP address is to use the embedded Web server.

Note

Consult your network administrator before changing the print server's IP address. Be sure to notify other users of any changes.

- 1 Open a Web browser and type the print server's current IP address as the URL.
- 2 Click the **Networking** tab.
- 3 In the TCP/IP section, change the configuration method to **Manual**.
- 4 Type a new IP address in the IP address box.

Note

You will lose your connection to the embedded Web server when you change the IP address. To re-establish the connection, type the new IP address in the browser's URL field.

Troubleshooting the print server

Installed print server stops working

If you have successfully installed a network printer and you are no longer able to print to it, the problem might be related to Dynamic Host Configuration Protocol (DHCP).

In a DHCP environment, a DHCP server allocates IP addresses as computers and printers on the network need them. DHCP-supplied addresses are dynamic and might cause problems for computers and printers, which expect IP addresses to be static.

If your print server acquired its IP address via DHCP, the IP address might have changed after you set up the printer. In this case, the printer is no longer available to the network. HP recommends configuring the print server with a static IP address.

To assign a static IP address

Note

Consult your network administrator before changing the print server's IP address. Be sure to notify other users of any changes.

- 1 Open a Web browser and type the print server's current IP address as the URL.
- 2 Click the **Networking** tab.
- 3 In the TCP/IP section, change the configuration method to **Manual**.
- 4 Type a new IP address in the IP address box.

Note

You will lose your connection to the embedded Web server when you change the IP address. To re-establish the connection, type the new IP address in the browser's URL field.

Print server status light

The status light on the back of the print server can indicate problems with the print server. Use the table below to interpret the print server status light.

Print server status light

Light behavior	Description
Off	The print server is not receiving power.
On (solid green)	The print server is on and ready.
Blinking slowly (amber)	An error occurred during a self-test or operation. Disconnect and reconnect the print server. If the problem still exists, reinstall the print server software.
Blinking slowly (green)	<p>The print server is receiving power, but it is not ready, or a self-test might be in progress. Wait for the light to turn solid green.</p> <p>The print server might have lost its connection to the network. Check the 10/100 link lights, which are located near the network connection. If the 10 and 100 link lights are both off, there is no network connection.</p>
Blinking quickly (green)	The print server is processing the configuration page. Wait until the configuration page finishes.
Flashing intermittently (green)	The print server is on and ready, and there is activity on the network.

Restoring the factory default settings

Once you configure the HP print server, the configuration settings are retained in memory unless you manually reset them to factory defaults using the following procedure.

- 1 Make sure the printer is turned on.
- 2 Unplug the print server from the printer.
- 3 While holding down the Test button on the print server, plug the print server back into the printer. Continue to hold down the Test button for approximately 3 seconds.

Index

A

- access, print cartridge 11
- accessories, ordering 129
- Alerts tab (HP toolbox) 62
- Attention light 6

B

- blank pages 82
- Bluetooth wireless technology 67
- booklets, printing 42
- button, Go 6

C

- cable
 - parallel 21
 - USB 20
- canceling a print job 44
- cardstock
 - guidelines for using 119
 - manual duplexing 41
 - printing 34
- changing
 - pickup roller 92
 - separation pad 96
- choosing
 - media 24
 - paper 24
- cleaning
 - media path 56
 - pickup roller 95
 - print cartridge area 55
 - printer 55
- clearing jams 89
- configuration
 - HP LaserJet 1150 3
 - HP LaserJet 1300 4
 - HP LaserJet 1300n 4
- configuration page
 - print server 144
- Configuration report 58
- connecting to the network 22
- conserving toner 51
- contacting HP 128
- control panel 8
- custom-sized media, printing 34

D

- Demo page 58
- DIMM
 - adding 138
 - removing 141
 - testing 140
- Documentation tab (HP toolbox) 62
- door
 - print cartridge 6, 11
 - straight-through output 7
- duplexing 39

E

- EconoMode 46
- embedded Web server 16, 64
 - Configuration page 65
 - device status 65
 - event log 65
 - Information tab 65
 - Networking tab 66
 - order supplies 66
 - print info pages 65
 - print server 145
 - Product registration 66
 - product support 66
 - Settings tab 65
 - supplies status 65
- Energy Star 105
- envelopes
 - guidelines for using 118
 - printing multiple envelopes 31
 - printing one envelope 29
- Environmental Product Stewardship Program 105
- environmental specifications 100
- errors
 - PostScript 79
 - software 84
- EWS 16, 64
- extended warranty 126

F

- FCC compliance 104
- features
 - professional quality 5
 - quality 5
 - save money 5
 - speed 5
- forms, printing 33

G

- garbled text 82
- Go button 6
- Go light 6
- graphics
 - missing 82
 - poor quality 83
- guides, media 9

H

- heavy media, guidelines for using 119
- HP toolbox
 - Alerts tab 62
 - Documentation tab 62
 - Network window 63
 - printer settings 63
 - Status tab 61
 - Troubleshooting tab 61
 - viewing 59
- HP Web Jetadmin 19

I

- IEEE 802.11b standard 67
- improving print quality 85
- Information tab (embedded Web server) 65
- information, links to selected topics 2
- input tray
 - loading main input tray 27
 - loading priority input tray 27
 - main 6, 9
 - priority 6, 9
- installing
 - shared printer 133
- IP address
 - print server 145

J

- jams
 - clearing 89
 - removing a jammed page 90
 - typical media jam locations 89

L

- labels
 - guidelines for using 117
 - printing 28
- letterhead, printing 33
- license, software 122
- life expectancy, print cartridge 50
- lights
 - Attention 6
 - Go 6
 - Ready 6
 - status light patterns 72
- loading media
 - main input tray 27
 - priority input tray 27

M

- Macintosh
 - common problems 74
 - PPDs 18
 - printing errors 75
 - renaming the printer 78
 - selecting alternate PPD 78
 - software 17
 - troubleshooting 74
- main input tray 6, 9
 - loading 27
- manual duplexing (printing on both sides of paper) 39
- manual feed printing 36
- Material Safety Data Sheet (MSDS) 107
- media
 - cleaning the media path 56
 - clearing jams 89
 - different types 27
 - guidelines for use 116
 - loading 27
 - optimizing print quality for media types 26
 - printing custom-sized media 34
 - printing manually 36
 - removing a jammed page 90
 - selecting 24
 - supported sizes 115
 - types that may damage the printer 25
 - types to avoid 25
 - typical jam locations 89
- media guides 9

- media paths 9
 - main input tray 9
- media guides 9
- output bin 10
- priority input tray 9
- straight-through output path 10
- memory
 - adding 138
- missing graphics 82
- missing text 82
- multiple pages, printing on a single sheet of paper 38

N

- network
 - connections 22
- Network window (HP toolbox) 63
- Networking tab (embedded Web server) 66
- N-up printing 38

O

- on/off switch 7
- online help, printer properties 14
- operating systems, supported 12
- optimizing print quality for media types 26
- ordering supplies and accessories 129
- output bin 6, 10
- output path, straight-through 10
- overview, printer 6

P

- paper
 - problems and solutions 116
 - selecting 24
 - supported sizes 115
 - using 116
- paper handling problems 80
- parallel cable, connecting 21
- parallel port 7
- pickup roller
 - changing 92
 - cleaning 95
- port
 - parallel 7
 - USB 7
- PostScript, errors 79
- power switch 7
- PPDs 18
 - selecting alternate 78
- print cartridge
 - access 11
 - changing 53
 - cleaning the print cartridge area 55
 - door 6, 11
 - life expectancy 50
 - redistributing toner 52
 - storing 49
 - using HP cartridges 48
 - warranty 124
 - where to return for recycling 106
- print driver
 - installing 12
 - Macintosh 17
 - Windows 15
- print quality
 - creases 87
 - curl 87
 - dropouts 85
 - EconoMode 46

- gray background 86
- light or faded print 85
- loose toner 86
- misformed characters 87
- optimizing for media types 26
- page skew 87
- settings 45
- toner scatter outline 88
- toner smear 86
- toner specks 85
- vertical lines 85
- vertical repetitive defects 86
- wave 87
- wrinkles 87
- print quality settings 45
- print server
 - configuration page 144
 - embedded Web server 145
 - factory default settings 148
 - installing 144
 - IP address 145, 146
 - status light 147
 - troubleshooting 146
- print settings, changing 14
- printer
 - cleaning 55
 - configurations 3
 - connections 20
 - control panel 8
 - features 5
 - media guides 9
 - overview 6
 - renaming the printer (Macintosh) 78
 - repacking 127
 - software 12
 - software problems 84
 - specifications 100
 - Toolbox 16
- printer drivers
 - sites for download 2
- printer information pages
 - Configuration report 58
 - Demo page 58
- printer properties
 - accessing 13
 - online help 14
- printer settings
 - HP toolbox 63
- printer, specifications 102
- printing
 - booklets 42
 - canceling 44
 - cardstock 34
 - Configuration report 58
 - custom-sized media 34
 - Demo page 58
 - envelopes 29
 - forms, preprinted 33
 - labels 28
 - letterhead 33
 - manual feed 36
 - multiple envelopes 31
 - multiple pages on a single sheet of paper 38
 - N-up 38
 - on both sides of the paper (manual duplexing) 39
 - transparencies 28
 - watermarks 37
- priority input tray 6, 9
 - loading 27

R

- Ready light 6
- recycling
 - HP printing supplies returns and environmental program 105
 - where to return cartridges 106
- redistributing toner 52
- registration
 - embedded Web server 66
- regulatory statements
 - Canadian DOC regulations 110
 - declaration of conformity 108, 109
 - Korean EMI statement 110
 - laser safety statement 110
 - laser statement for Finland 111
- removing a jammed page 90
- renaming the printer 78
- repacking the printer 127
- repair
 - contacting HP 128
 - hardware service 125
- replacement parts 130

S

- saving toner 51
- selecting
 - alternate PPD 78
 - media 24
 - paper 24
- separation pad, changing 96
- service
 - contacting HP 128
 - hardware 125
- settings
 - changing default settings for Windows 98, 2000, ME 13
 - changing default settings for Windows XP 13
 - changing for current software only 13
- Settings tab (embedded Web server) 65
- settings, print quality 45
- shared printer, installing 133
- size, media 115
- software
 - HP Web Jetadmin 19
 - installing 12
 - Macintosh 17
 - network 19
 - printer drivers, Macintosh 17
 - printer drivers, Windows 15
 - problems 84
 - sites for download 2
 - software license agreement 122
 - supported operating systems 12
 - Windows 15
- specifications 100
 - acoustics 100
 - capacities and ratings 102
 - electrical 101
 - environmental 100
 - media 114
 - memory 103
 - physical 102
 - port availability 103
- status light patterns 72
- Status tab (HP toolbox) 61
- straight-through output door 7
- straight-through output path 10
- supplies, ordering 129
- support, web sites 2

- T**
 - text
 - garbled 82
 - missing 82
 - toner
 - changing the print cartridge 53
 - cleaning the print cartridge area 55
 - conserving 51
 - loose toner 86
 - low 85
 - opening the print cartridge door 11
 - print cartridge door 6
 - redistributing 52
 - scatter outline 88
 - smear 86
 - specks 85
 - storing print cartridges 49
 - Toolbox 16
 - transparencies
 - guidelines for using 117
 - printing 28
 - tray
 - main input 6
 - priority input 6
 - troubleshooting
 - blank pages 82
 - common Macintosh problems 74
 - contacting HP support 71
 - creases 87
 - curl 87
 - demo page 70
 - dropouts 85
 - garbled text 82
 - gray background 86
 - HP toolbox 59
 - incomplete text 82
 - light or faded print 85
 - loose toner 86
 - Macintosh printing problems 74
 - misformed characters 87
 - missing graphics or text 82
 - page skew 87
 - paper handling problems 80
 - poor graphics quality 83
 - PostScript errors 79
 - print quality 71
 - printed page and expectations 71
 - printed page differs from onscreen page 82
 - printer setup 70
 - printer software problems 84
 - printer-computer communication 71
 - Ready light 70
 - solutions 70
 - toner scatter outline 88
 - toner smear 86
 - toner specks 85
 - vertical lines 85
 - vertical repetitive defects 86
 - wave 87
 - wrinkles 87
 - Troubleshooting tab (HP toolbox) 61
 - two-sided (duplex) printing 39
 - types of media 27
- U**
 - USB
 - connecting the USB cable 20
 - port 7
 - user guide links 2
 - using HP print cartridges 48
- W**
 - warranty
 - extended 126
 - HP limited warranty statement 123
 - print cartridge 124
 - watermarks, printing 37
 - Web server, embedded 64
 - web-based support 2
 - Windows 2000, installing shared printer 134
 - Windows 98, installing shared printer 133
 - Windows Me, installing shared printer 133
 - Windows XP, installing shared printer 135
 - wireless printing
 - Bluetooth 67
 - IEEE 802.11b standard 67



i n v e n t

copyright © 2003
Hewlett-Packard Company

www.hp.com



Q1334-90909