



Xerox 700 Digital Color Press with Integrated  
Fiery® Color Server



## Printing from Windows

© 2008 Electronics for Imaging, Inc. The information in this publication is covered under *Legal Notices* for this product.

45072733  
21 April 2008

# CONTENTS

<b>INTRODUCTION</b>	5
Terminology and conventions	5
About this document	6
Setting up printing	6
User software	7
System requirements	7
<b>INSTALLING PRINTER DRIVERS</b>	8
Installing printer drivers by Point and Print	8
Downloading printer drivers using WebTools	10
Installing printer drivers	12
Installing and connecting to a virtual printer	15
Uninstalling printer drivers	16
<b>SETTING UP PRINTING CONNECTIONS</b>	18
Printing connections	18
Completing the SMB printing connection	18
Completing Standard TCP/IP Port (Raw or LPR) printing connections	19
Completing IPP connections	22
<b>CONFIGURING INSTALLABLE OPTIONS</b>	24
Configuring installable options manually	24
Configuring installed options and updating print options settings automatically	25

<b>PRINTING UTILITIES</b>	26
<b>Configuring the connection for Job Monitor</b>	26
<b>E-mail Service</b>	27
Printing using an e-mail client	28
Managing print jobs with e-mail commands	30
<b>Printing from a USB device</b>	31
<b>FTP printing</b>	32
<b>PRINTING</b>	33
<b>Printing from applications</b>	33
Setting options and printing	33
<b>Using presets</b>	40
<b>Customizing the Basic icon</b>	44
<b>Retrieving secure print jobs on the digital press control panel</b>	45
<b>Defining and printing custom page sizes</b>	47
Custom page sizes for Windows PostScript printer driver	47
Custom page sizes for Windows PCL printer driver	49
<b>Viewing the digital press status</b>	52
<b>Saving files to print at a remote location</b>	53
<b>INDEX</b>	55

## INTRODUCTION





This document describes how to install the printer drivers and printer description files for the Xerox 700 Digital Color Press with Integrated Fiery Color Server and how to set up printing from Microsoft Windows computers. It also describes several printing utilities and how to print to the Xerox 700 Digital Color Press with Integrated Fiery Color Server. For information about setting up network servers and clients to use the Xerox 700 Digital Color Press with Integrated Fiery Color Server, see *Configuration and Setup*. For general information about using the color digital press, your computer, application software, or your network, see the documentation that accompanies those products.



For information about supported operating systems and system requirements, see *Welcome*.

### Terminology and conventions

This document uses the following terminology and conventions.

Term or convention	Refers to
Aero	Integrated Fiery Color Server (in illustrations and examples)
Digital press	Xerox 700 Digital Color Press
Integrated Fiery Color Server	Xerox 700 Digital Color Press with Integrated Fiery Color Server
Titles in <i>italics</i>	Other documents in this set
Windows	Microsoft Windows 2000, Windows XP, Windows Server 2003, Windows Vista
	Topics for which additional information is available by starting Help in the software
	Tips and information
	Important information
	Important information about issues that can result in physical harm to you or others

## About this document

This document covers the following topics:

- Installing printer files on Windows computers
- Setting up printing connections on Windows computers
- Installing Integrated Fiery Color Server printing utilities
- Printing from Windows computers

## Setting up printing

The following table lists the procedures for installing printer drivers and setting up the printing connections for each Windows platform supported by the Integrated Fiery Color Server.

Action	Reference
Installing printer drivers	<a href="#">“Installing printer drivers by Point and Print”</a> on page 8
	<a href="#">“Downloading printer drivers using WebTools”</a> on page 10
	<a href="#">“Installing printer drivers”</a> on page 12
	<a href="#">“Installing and connecting to a virtual printer”</a> on page 15
Setting up SMB printing	<a href="#">“Completing the SMB printing connection”</a> on page 18
Setting up TCP/IP printing	<a href="#">“Completing Standard TCP/IP Port (Raw or LPR) printing connections”</a> on page 19
Setting up IPP printing	<a href="#">“Completing IPP connections”</a> on page 22

## User software

The following table lists the user software that is described in this document. This is the user software you need for setting up basic printing on the Fiery. Other documents may describe other user software depending on what you are trying to accomplish.

User Software	Description
PostScript Printer Description (PPD) file and associated files	These files provide information about the Integrated Fiery Color Server and your particular digital press model to your application and printer driver.
Job Monitor	Monitor the status of connected Integrated Fiery Color Servers and print jobs sent to them. The Job Monitor is automatically installed when the printer driver is installed on a Windows computer.  For more information, see <a href="#">“Configuring the connection for Job Monitor”</a> on page 26.
Printer Delete Utility	Uninstall the Windows printer driver.  For more information, see <a href="#">“Uninstalling printer drivers”</a> on page 16.

## System requirements

For detailed system requirements, see [Welcome](#), provided in your media pack.

## INSTALLING PRINTER DRIVERS

This chapter describes the procedures for installing printer drivers on a computer using a supported version of Windows. For the Windows versions supported, see “[Terminology and conventions](#)” on page 5. Installing printer drivers and printer description files is the first step in setting up the Integrated Fiery Color Server as a PostScript or PCL printer.

Install printer drivers as follows:

- From the Integrated Fiery Color Server through Point and Print using SMB printing.
- From WebTools, using the Downloads tab to download the printer driver files before installing the printer driver. For instructions, see “[Downloading printer drivers using WebTools](#)” on page 10.
- From the User Software DVD.

**NOTE:** WebTools is available if the administrator has enabled Internet access to the Integrated Fiery Color Server.

If the Integrated Fiery Color Server printer driver is already installed, you must uninstall it before you install a new one (see “[Uninstalling printer drivers](#)” on page 16).

### Installing printer drivers by Point and Print

SMB printing (also known as Windows or WINS printing) allows you to install PostScript or PCL printer drivers on your computer from the Integrated Fiery Color Server using Point and Print, and print to a particular connection (Print queue, Hold queue, or Direct connection).

Each connection (Print queue, Hold queue, or Direct connection) requires a separate installation. Repeat the procedure for each connection.

When you install the printer driver using Point and Print, you cannot configure installable options manually. The installed options are displayed in the printer driver when you enable Two-Way Communication. For more information, see [Configuring Installable Options](#).

**NOTE:** The procedures for setting up printing with the PostScript and PCL printer drivers are similar. The following illustrations show the PostScript drivers. Any differences are noted.



**BEFORE YOU BEGIN**

Ask your Integrated Fiery Color Server administrator to do the following in Setup on the Integrated Fiery Color Server:

- **Assign the Integrated Fiery Color Server a valid IP address.**

Ask the administrator for the IP address or DNS name because you need it in the following procedure.

- **Configure the Integrated Fiery Color Server for SMB printing.**

**NOTE:** SMB printing is referred to as Windows Printing in Setup and on the Configuration page.

- **Specify the printer driver type, PS or PCL.**

For more information, see [Configuration and Setup](#) or WebTools Configure Help.

**TO SET UP SMB PRINTING ON WINDOWS COMPUTERS**

- 1 **Windows 2000/XP/Server 2003: Right-click Network Neighborhood or My Network Places, and select Find Computer or Search for Computers.**

**Windows Vista: Click the Start button, choose Control Panel, double-click Network and Sharing Center, and then click the View computers and devices link.**

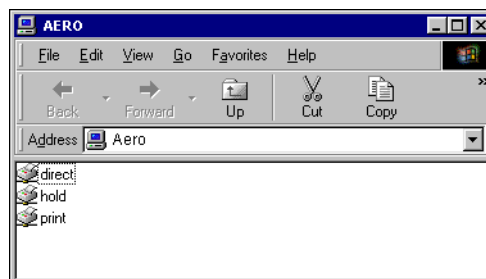
- 2 **Windows 2000/XP/Server 2003: Type the name or IP address of the Integrated Fiery Color Server and click Search Now or Search.**

**Windows Vista: Type the name or \\IP address of the Integrated Fiery Color Server in the Search field and click Enter.**

If you cannot locate the Integrated Fiery Color Server, contact your Integrated Fiery Color Server administrator.

- 3 **Double-click the name of the Integrated Fiery Color Server to display enabled print connections.**

**NOTE:** For a description of each print connection, see [Configuration and Setup](#).



You must now create a printer port and install the printer driver from the User Software DVD.

**NOTE:** You cannot use Point and Print to install the driver and configure the printing connection to the Integrated Fiery Color Server in a single procedure.

- 4 **Windows 2000:** Click Start, choose Settings, and then choose Printers.  
**Windows XP:** Click Start and choose Printers and Faxes.  
**Windows Server 2003:** Click Start, choose Control Panel, and then choose Printers and Faxes.  
**Windows Vista:** Click the Start button, choose Control Panel, and then double-click Printers.
- 5 **Windows 2000/XP:** Double-click Add Printer and click Next.  
**Windows Server 2003:** Choose Add a printer and click Next.  
**Windows Vista:** Click Add a printer.
- 6 Click Local Printer and click Next.
- 7 Click Create a New Port, choose Local Port from the menu, and then click Next.
- 8 In the Port Name dialog box, type the name of the Integrated Fiery Color Server, followed by the printing connection, and click OK.  
  
Enter the port name as follows: \\Aero\print where Aero is the name of the Integrated Fiery Color Server and print is the printing connection.
- 9 In the dialog box displaying lists of manufacturers and printers, click Have Disk.  
  
You will now install the printer driver from the User Software DVD.
- 10 Type the name of the DVD drive and browse to the Prntdrv\Ps\_drvr\Win\_2K\_XP\_VISTA folder.
- 11 Make sure "Oemsetup.inf" or "Oemsetup" is selected and click Open.
- 12 Verify that the path is correct in the Install From Disk dialog box and click OK.
- 13 Follow the on-screen instructions.

## Downloading printer drivers using WebTools

WebTools allows you to download installers for printer drivers to your computer directly from the Integrated Fiery Color Server.

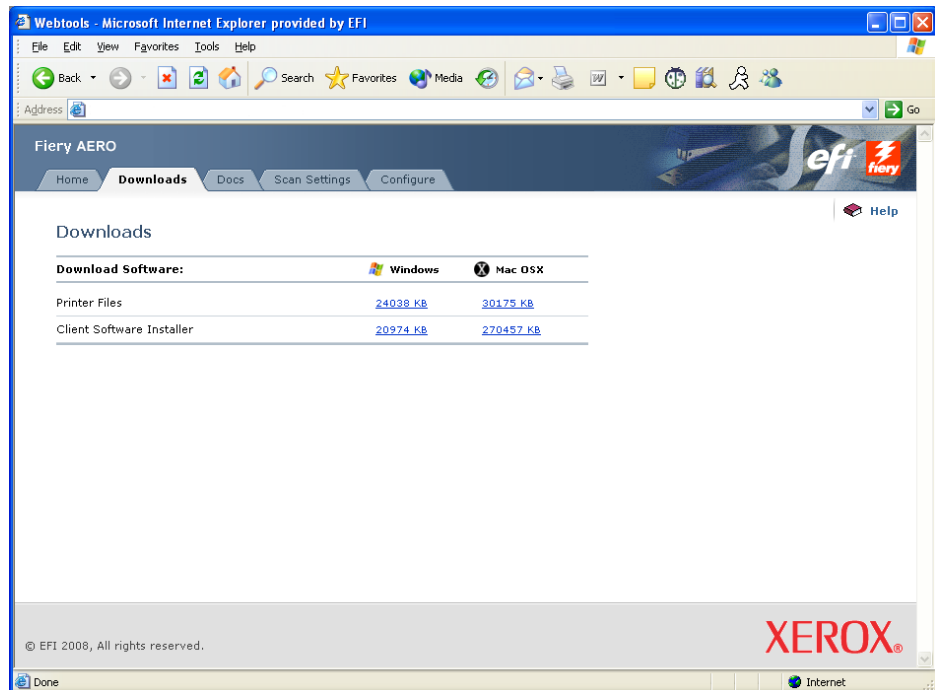
Download the printer driver files from the Integrated Fiery Color Server using WebTools and then follow the procedures on [page 12](#). Before you download the printer driver files, the administrator must set specific Integrated Fiery Color Server options in Setup. You must also prepare each client computer to communicate with the Integrated Fiery Color Server over the Internet or intranet.

For more information about Setup, see [Configuration and Setup](#).

For more information about setting up and starting WebTools, see [Utilities](#).

**To DOWNLOAD PRINTER DRIVER FILES WITH WEBTOOLS**

- 1 Start your Internet or intranet browser and type the DNS name or IP address of the Integrated Fiery Color Server.
- 2 Click the Downloads tab.



- 3 Click the link for the item that you want to install.

For Windows printer drivers, click the Printer Files link under the Windows heading.

- 4 If a dialog box prompts you to either open the file or save it to disk, choose to save it to disk.
- 5 Browse to the location where you want to save the PRNDRVE.EXE file and click Save.
- 6 Double-click the PRNDRVE.EXE file to extract the files.

The file is downloaded from the Integrated Fiery Color Server. This compressed file is an archive that contains multiple files.

Depending on your operating system, you might be prompted to select a location to extract the files to.

Follow the instructions for your operating system to install the printer driver. The procedures are the same as for installing from the DVD, except that after you click Have Disk, you browse to the location where you extracted the files, rather than to the DVD.

For instructions on installing the printer driver for Windows 2000/XP/Server 2003/Vista, see [“To install and complete the print connection for Windows”](#) on page 12.



For more information, see [WebTools Downloads Help](#).

## Installing printer drivers

The following procedures describe installing the printer driver from the User Software DVD.

The procedures for configuring the options for the PostScript and PCL printer drivers are similar. The following illustrations show the PostScript driver. Differences are noted.

**NOTE:** The following procedures use Windows XP illustrations.

This procedure describes the installation of a local printer (Port9100). You can modify the printing protocol later, according to your network type.

---

### TO INSTALL AND COMPLETE THE PRINT CONNECTION FOR WINDOWS

- 1 Windows 2000: Click Start, choose Settings, and then choose Printers.  
Windows XP: Click Start and choose Printers and Faxes.  
Windows Server 2003: Click Start, choose Control Panel, and then choose Printers and Faxes.  
Windows Vista: Click the Start button, choose Control Panel, and then double-click Printers.**
- 2 Windows 2000/XP: Double-click the Add Printer icon and click Next.  
Windows Server 2003: Choose Add a printer and click Next.  
Windows Vista: Click Add a printer.**
- 3 Windows 2000/XP/Server 2003: Specify printing using a Local printer, clear the “Automatically detect and install my Plug and Play printer” box, and then click Next.  
Windows Vista: Select Add a local printer.**
- 4 Select Create a New Port, choose Standard TCP/IP Port from the Type of port menu, and click Next.**

The Add Standard TCP/IP Printer Port Wizard dialog box appears.

- 5 Type the IP address of the Integrated Fiery Color Server.**
- 6 Click Next.**
- 7 Click Finish to close the Add Standard TCP/IP Printer Port Wizard dialog box.**

**NOTE:** If the device is not found on the network, the device is displayed instead of the Finish button. If a device is not found on the network, that could be for one of the following reasons:

- Integrated Fiery Color Server is not powered on.
- Network is not connected.

- Integrated Fiery Color Server is not configured properly.
- IP address is not correct.

If you encounter one of the situations mentioned, you can continue to set up the port by configuring the port manually. See “[To set up Standard TCP/IP Port \(Raw or LPR\) for Windows](#)” on page 19 and follow steps 10 through 13 before proceeding step 8.

**8 Click Have Disk in the dialog box displaying lists of manufacturers and printers.**

The Install From Disk dialog box prompts you for the disk.

**9 Insert the User Software DVD into the DVD drive, type the name of the drive (for example, D:\), and click Browse. Browse to the English\Prntdrv\Ps\_drvr\Win\_2K\_XP\_VISTA folder.**

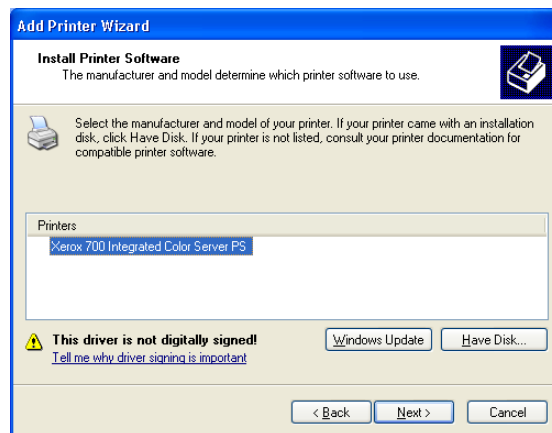
If you are installing from the files you downloaded from the Integrated Fiery Color Server using the Downloads tab in WebTools, browse to `prntdrv\Prntdrv\Ps_drvr\Win_2K_XP_VISTA` and click Open.

**10 Make sure that Oemsetup.inf or Oemsetup is selected and click Open.**

The path is copied to the Install From Disk dialog box.

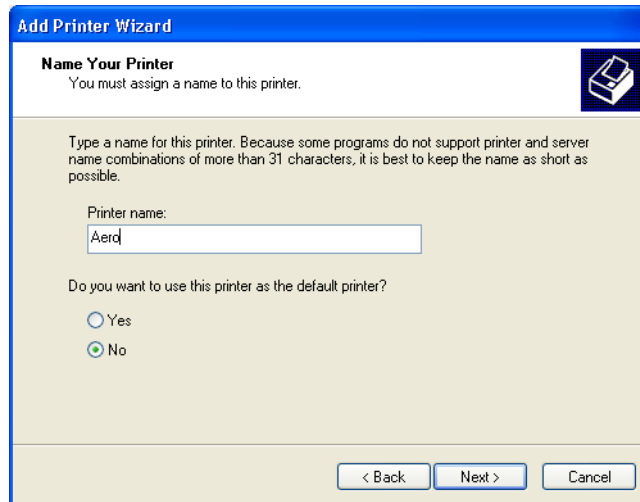
**11 Verify that the path is correct and click OK.**

**12 In the Printers box, select the Integrated Fiery Color Server printer driver as your printer and click Next.**



- 13 Type a name for the Integrated Fiery Color Server in the Printer name field, indicate whether you want to make it the default printer, and click Next.**

This name is used in the Printers window and the queues window.



- 14 Follow the on-screen instructions.**

Do not share the printer and do not print a Test Page at this time. Continue with the printer driver installation and at the last screen, click Finish.

The necessary files are installed on your hard disk. When installation is complete, the Printers window appears with an icon for the newly installed printer.

Now you are ready to configure the installable options (see [Configuring Installable Options](#)).

If you want to set up a connection other than port 9100, proceed to [Setting Up Printing Connections](#).

To use the printer driver, you must select the following options in the Advanced tab of the printer driver after installation is complete:

- Spool print documents
- Start printing immediately
- Print spooled documents first

## Installing and connecting to a virtual printer

A virtual printer allows you to print to the Integrated Fiery Color Server using a predefined set of job settings. You do not have to set print options manually. Before you can print to a virtual printer, the administrator must create and configure the virtual printer using Command WorkStation. After the virtual printer is set up, you can install the printer driver and printer description files on your computer from the Integrated Fiery Color Server using Point and Print.

For more information about setting up virtual printers, see [Utilities](#).

When you install the printer driver using Point and Print, you cannot configure installable options manually. Installable options are configured automatically.

---

### TO SET UP A VIRTUAL PRINTER ON WINDOWS COMPUTERS

- 1 Windows 2000/XP/Server 2003: Right-click Network Neighborhood or My Network Places, and select Find Computer or Search for Computers.  
Windows Vista: Right-click Network and choose Open from the menu.**

- 2 Type the Integrated Fiery Color Server name or IP address and click Search Now.**

If you cannot locate the Integrated Fiery Color Server, contact your network administrator.

- 3 Double-click the Integrated Fiery Color Server name to display enabled print connections.**

Virtual printers are listed along with the Print queue, Hold queue, and Direct connection (if those connections are enabled). Virtual printers usually have names that indicate the type of job they are set up for.

- 4 Windows 2000: Click Start, choose Settings, and then choose Printers.  
Windows XP: Click Start and choose Printers and Faxes.  
Windows Server 2003: Click Start, choose Control Panel, and then choose Printers and Faxes.  
Windows Vista: Click the Start button, choose Control Panel, and then double-click Printers.**

- 5 Windows 2000: Double-click Add Printer and click Next.  
Windows XP: Double-click Add a printer and click Next.  
Windows Server 2003: Click Start, Choose Add a printer and click Next.  
Windows Vista: Click Add a printer.**

- 6 Windows 2000/XP/Server 2003: Click Local Printer and click Next.  
Windows Vista: Select Add a local printer.**

- 7 Click Create a New Port, choose Local Port from the menu, and then click Next.**

- 8 In the Port Name dialog box, type the name of the Integrated Fiery Color Server server, followed by the printing connection, and click OK.**

Enter the port name as follows: \\Aero\print where Aero is the name of the Integrated Fiery Color Server and print is the printing connection.

- 9 In the dialog box displaying lists of manufacturers and printers, click Have Disk.**

You will now install the printer driver from the User Software DVD.

- 10 Type the name of the DVD drive and browse to the Prntdrvr\Ps\_drvr\Win\_2K\_XP\_VISTA folder.
- 11 Make sure "Oemsetup.inf" or "Oemsetup" is selected and click Open.
- 12 Verify that the path is correct in the Install From Disk dialog box and click OK.
- 13 Follow the on-screen instruction.

The virtual printer is displayed in the Printers or Printers and Faxes window.

You can print to a virtual printer as you would print to the Integrated Fiery Color Server, as described in [Printing](#). Depending on how the virtual printer is configured, you may not be able to set some print options.

## Uninstalling printer drivers

All installation of user software on a Windows computer is done through the Fiery User Software Installer. The procedures in [Utilities](#) describe installing from the User Software DVD. The Printer Delete Utility is installed and used locally. You do not need to connect to the Integrated Fiery Color Server before you use the software.

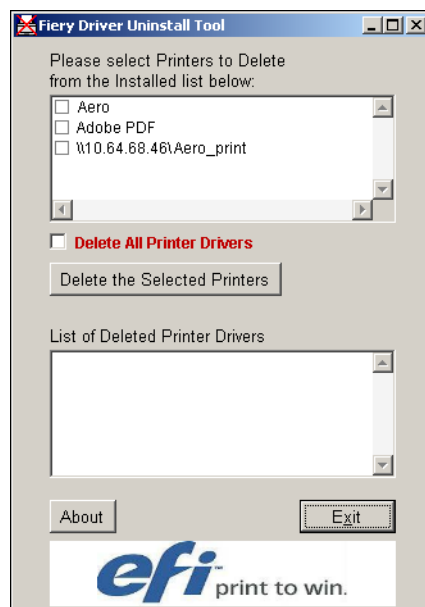
**NOTE:** This utility is supported on Windows 2000/XP/Server 2003/Vista.

---

### TO USE PRINTER DELETE UTILITY

- 1 Click Start, choose Programs, and then choose Fiery.
- 2 Click FieryPrinterDeleteUtility.

The Fiery Driver Uninstall Tool dialog box appears. Any Integrated Fiery Color Server printer drivers found on your computer are listed.





- 3 To delete a printer, select the check box next to the printer name and click Delete the Selected Printers.  
To delete all the installed printer drivers, select the Delete All Printer Drivers check box.
- 4 Click OK to delete the selected printer driver(s).
- 5 When you finish deleting printer drivers, click Exit and restart your computer.

## SETTING UP PRINTING CONNECTIONS

To print from Windows computers, you or the administrator must perform the following tasks if you want to set up a connection other than port 9100:

- Set up network servers, if any.
- Set up the Integrated Fiery Color Server to accept print jobs from your computer.
- Configure a port on each Windows computer for the network type.

### Printing connections

The Integrated Fiery Color Server supports the following printing connections:

- SMB
- Standard TCP/IP (RAW or LPR)
- IPP or IPP over SSL

### Completing the SMB printing connection

If your network does not have a Windows server, Windows computers can still print to the Integrated Fiery Color Server. This method of printing is SMB printing (also known as Windows or WINS printing). When users send print jobs, computers running Windows operate in a peer-to-peer environment and communicate directly with the Integrated Fiery Color Server.

Enabling SMB printing allows the Integrated Fiery Color Server to be listed on the network, so that Windows clients can print to a particular print connection (Print queue, Hold queue, or Direct connection) on the Integrated Fiery Color Server without using other networking software. Windows printing runs via TCP/IP. You must configure TCP/IP on the Integrated Fiery Color Server and on all computers that use SMB printing.

After you enable SMB printing on the Integrated Fiery Color Server, you can set up the Windows or SMB connection and install the printer driver in one procedure. For more information, see [“Installing printer drivers by Point and Print”](#) on page 8.

## Completing Standard TCP/IP Port (Raw or LPR) printing connections

After you install the PostScript and printer driver files, you can add or configure the setup for the Standard TCP/IP Port (Raw or LPR) connection as follows:

- Prepare the Integrated Fiery Color Server to accept print jobs using Standard TCP/IP Port (Raw or LPR) protocols. For details, see [Configuration and Setup](#).
- Enable LPD or Port 9100 on the Integrated Fiery Color Server. For details, see [Configuration and Setup](#).
- Configure the computer for the TCP/IP connection.

Before you complete the following procedure, contact your system administrator for the IP address assigned to the Integrated Fiery Color Server.

The TCP/IP protocol should be installed as a default on the Windows computer. For Port 9100, you can set up the connection and install the printer driver in one procedure.

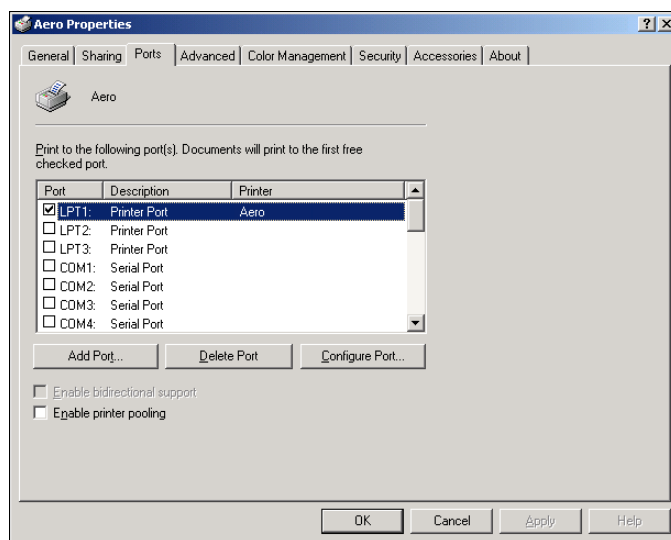
**NOTE:** You can also set up the LPR Port connection by installing Print Services for UNIX, which is supplied as an add-on Windows component with Windows 2000/XP/Server 2003/Vista. For more information, see the documentation that accompanies Windows.

---

### TO SET UP STANDARD TCP/IP PORT (RAW OR LPR) FOR WINDOWS

**NOTE:** The following procedures use Windows 2000 illustrations.

- 1 Click **Start**, choose **Settings**, and then choose **Printers**.
- 2 Right-click the **Integrated Fiery Color Server** icon and choose **Properties**.
- 3 Click the **Ports** tab.

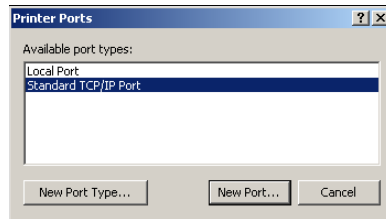


**4 To add a new port, click Add Port.**

To change the port settings, proceed to step 10.

**5 Windows 2000/XP/Server2003: Select Standard TCP/IP Port from the list of Available port types and click New Port Type.**

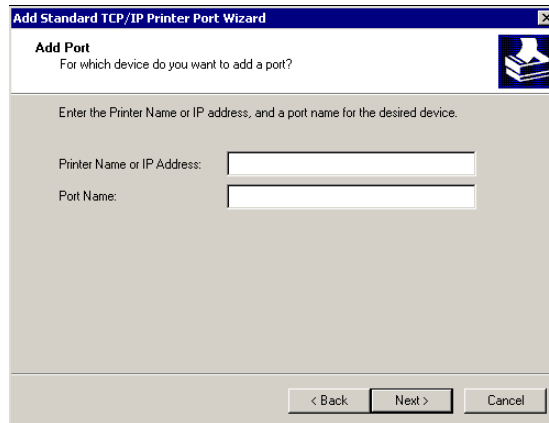
**Windows Vista: Double-click Standard TCP/IP Port from list.**



The Add Standard TCP/IP Printer Port Wizard dialog box appears.

**6 Click Next.**

**7 Type the Integrated Fiery Color Server IP address.**



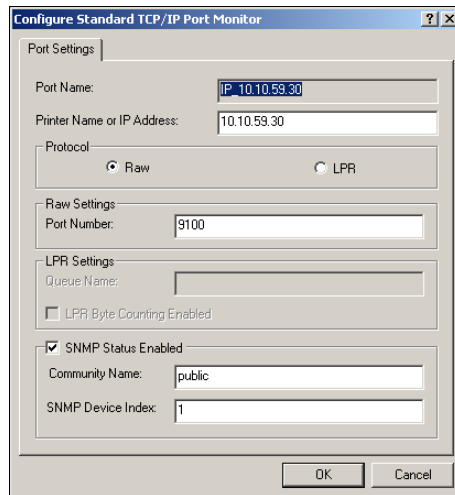
**8 Click Next.**

**9 Click Finish to close the Add Standard TCP/IP Printer Port Wizard dialog box, and then click Close in the Printer Ports dialog box.**

To change the default setting, proceed to [step 10](#).

**10 Click Configure Port on the Ports tab of the Properties dialog box.**

The Configure Standard TCP/IP Port Monitor dialog box appears.

**11 To use LPD printing, select LPR in the Protocol area and LPR Byte Counting Enabled in the LPR Settings area.**

**NOTE:** You can also proceed without selecting LPR Byte Counting Enabled.

**To use Port 9100 printing, select Raw in the Protocol area.**

The port number 9100 automatically appears in the Raw Settings area. This is the default port number. You can print to the printer connection selected for Port 9100 printing on the Integrated Fiery Color Server.

To specify a specific port number, see the following step.

**12 Type the name of the print connection.**

For LPR, type print, hold, or direct for Queue Name.

For Port 9100, type the following port numbers for each print connection in the Raw Settings area:

Integrated Fiery Color Server default: 9100

direct: 9101

print: 9102

hold: 9103

**NOTE:** Type the number *exactly* as shown.

**13 Click OK to close the Configure Standard TCP/IP Port Monitor dialog box.**

**NOTE:** The Integrated Fiery Color Server supports LPR printing in the IPv6 environment. LPR printing is supported on the Windows XP/Server 2003 computer from a command line, but other methods may work.

**14 Click Apply.**

## Completing IPP connections

With Internet Printing Protocol (IPP), print jobs are sent to the Integrated Fiery Color Server over the Internet.

Before you begin, perform the following tasks:

- Make sure the Integrated Fiery Color Server is configured for TCP/IP printing and IPP printing.



For more information, see WebTools Configure Help.

- Specify the printing destination on your computer.

**NOTE:** IPP over SSL connections are supported.

---

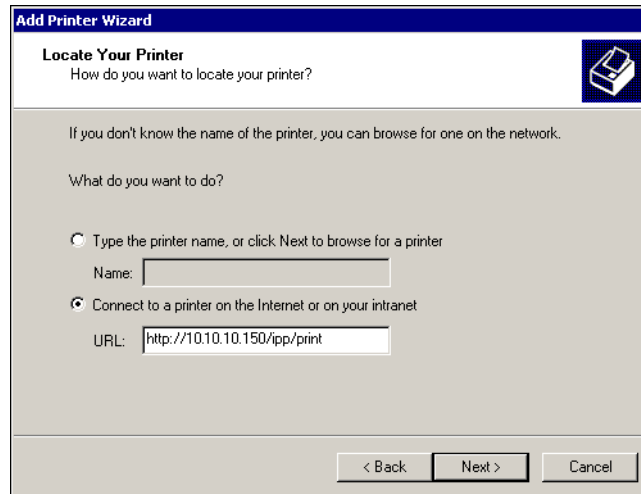
### TO SET UP IPP PRINTING WITH WINDOWS

- 1 Windows 2000: Click Start, choose Settings, and then choose Printers.**  
**Windows XP: Click Start and choose Printers and Faxes.**  
**Windows Server 2003: Click Start, choose Control Panel, and then choose Printers and Faxes.**  
**Windows Vista: Click the Start button, choose Control Panel, and then double-click Printers.**
- 2 Windows 2000/XP: Double-click the Add Printer icon and click Next.**  
**Windows Server 2003: Choose Add a printer and click Next.**  
**Windows Vista: Click Add a printer.**
- 3 Windows 2000/XP/Server 2003: Select Network printer and click Next.**  
**Windows Vista: Select Add a network printer.**
- 4 Select Connect to a printer on the Internet or on your intranet. Type an IP address or computer name in the URL field.**

The path for the printer is the IP address or DNS name followed by `ipp/print` for the Print queue. Insert slashes between the elements, for example, `http://10.10.10.150/ipp/print`.

When an IPP over SSL connection is used, the path for the printer is `https` followed by the IP address or DNS name and then by `ipp/print` for the Print queue. Insert slashes between the elements, for example, `https://10.10.10.150/ipp/print`.

**NOTE:** The URL for the printer is not case-sensitive.



**5 Click Next.**

The Connect to Printer dialog box appears.

**6 Click OK.**

The Add Printer Wizard dialog box appears.

**7 If you are installing the PostScript printer for the first time, follow the procedure [“To install and complete the print connection for Windows”](#) on page 12, step 8.**

**8 Indicate whether you want to make the Integrated Fiery Color Server the default printer and click Next.**

**9 Click Finish.**

## CONFIGURING INSTALLABLE OPTIONS

After you complete the printer driver installation, you must configure the Integrated Fiery Color Server for the options installed on the digital press to allow the Integrated Fiery Color Server to take advantage of the digital press options. Configure the options manually, or for TCP/IP network connections, use the Two-Way Communication feature to configure the options automatically.

### Configuring installable options manually

The following procedures describe how to manually configure the Integrated Fiery Color Server for the options installed on the digital press. The procedures for all Windows platforms are similar. Any differences are noted in the text. For more information about the print settings that use these options, see [Print Options](#).

When you configure installable options manually, be sure to match the actual configuration of the Integrated Fiery Color Server and digital press. Otherwise, the print options shown in the printer driver might not match the print options actually available.

---

#### TO CONFIGURE OPTIONS MANUALLY FROM THE POSTSCRIPT PRINTER DRIVER

- 1 Windows 2000:** Click Start, choose Settings, and then choose Printers.  
**Windows XP:** Click Start and choose Printers and Faxes.  
**Windows Server 2003:** Click Start, choose Control Panel, and then choose Printers and Faxes.  
**Windows Vista:** Click the Start button, choose Control Panel, and then double-click Printers.
- 2 In the Printers window, select the Integrated Fiery Color Server PostScript or PCL printer driver icon.**
- 3 PostScript driver:** Choose Properties from the File menu.  
**PCL driver:** Choose Printing Preferences from the File menu.
- 4 Click the Accessories tab.**
- 5 Select an installable option from the Available Options list.**
- 6 Click Add to move the option to the Installed Options list.**
- 7 Click Apply in the Properties or Printing Preferences dialog box.**
- 8 Click OK.**



## Configuring installed options and updating print options settings automatically

If you enabled a TCP/IP network, you can automatically update your printer driver to reflect the options currently installed on the digital press. When the printer driver is first installed, the options reflect the default settings that were set up in Integrated Fiery Color Server Setup or ColorWise Pro Tools. When you update the printer driver using the Two-Way Communication feature, you allow the printer driver to retrieve the settings from the Integrated Fiery Color Server.

The Two-Way Communication feature also updates the ColorWise print options in Expert Color Settings to reflect the current color settings and FreeForm Settings to reflect the current Master settings on the Integrated Fiery Color Server. For more information about ColorWise print options, see [Color Printing](#).

---

### TO ENABLE TWO-WAY COMMUNICATION

- 1 Windows 2000: Click Start, choose Settings, and then choose Printers.  
Windows XP: Click Start and choose Printers and Faxes.  
Windows Server 2003: Click Start, choose Control Panel, and then choose Printers and Faxes.  
Windows Vista: Click the Start button, choose Control Panel, and then double-click Printers.**
- 2 In the Printers window, select the Integrated Fiery Color Server PostScript or PCL printer driver icon.**
- 3 PostScript driver: Choose Properties from the File menu.  
PCL driver: Choose Printing Preferences from the File menu.**
- 4 Click the Accessories tab.**
- 5 Select Two-Way Communication.**
- 6 Type the Integrated Fiery Color Server IP address or DNS name.**
- 7 Select Update Fiery Driver When Opened to display the printer's current default settings when the printer driver is opened.**
- 8 Click Update.**

**NOTE:** To confirm that Two-Way Communication is enabled, click the About tab and check that the Integrated Fiery Color Server name and other server information are displayed.

- 9 Select Enable E-mail Notification to receive e-mail notification after your job has been printed, and type the e-mail address to which an e-mail notification is sent.**

You will receive e-mail notification of any errors that occur during printing.

**NOTE:** Enable E-mail Notification is displayed only if E-mail Service is enabled at Setup. For more information, see [Configuration and Setup](#).

- 10 Click the Advanced tab and clear Enable Advanced Printing Features.**
- 11 Click Apply in the Properties or Printing Preferences dialog box.**
- 12 Click OK.**

## PRINTING UTILITIES

In addition to printing jobs from the Integrated Fiery Color Server printer driver, you can print jobs using the following utilities:

- Job Monitor

You can view information about the print jobs sent to the Integrated Fiery Color Server.

**NOTE:** Job Monitor is automatically installed when you choose the printer driver to install on your computer. To use Job Monitor, you must enable it in the printer driver. (For more information, see [page 26](#).)

- E-mail Service

You can submit jobs to the Integrated Fiery Color Server as e-mail attachments.

You can also print to the Integrated Fiery Color Server in the following ways:

- USB device
- FTP printing

### Configuring the connection for Job Monitor

Use Job Monitor to monitor the status of Integrated Fiery Color Servers and view information about the print jobs sent to them.



For information about using Job Monitor, see Job Monitor Help.

---

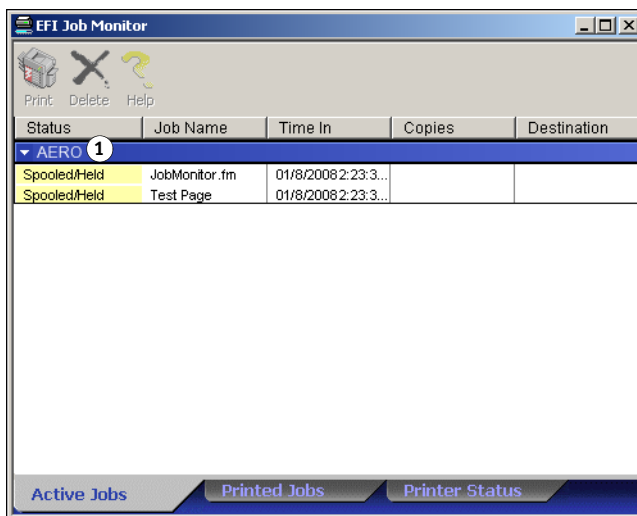
#### TO CONFIGURE THE CONNECTION TO INTEGRATED FIERY COLOR SERVERS

- 1 **Windows 2000:** Click Start, choose Settings, and then choose Printers.  
**Windows XP:** Click Start and choose Printers and Faxes.  
**Windows Server 2003:** Click Start, choose Control Panel, and then choose Printers and Faxes.  
**Windows Vista:** Click the Start button, choose Control Panel, and then double-click Printers.
- 2 In the Printers window, select the Integrated Fiery Color Server printer driver icon.
- 3 Right-click the Integrated Fiery Color Server icon and choose Printing Preferences.
- 4 Click the Fiery Printing tab.
- 5 Click the Printer icon.

**6 Select the Monitor my print job option.**


When you send your first print job to the Integrated Fiery Color Server, Job Monitor opens a utility window and establishes a connection to the Integrated Fiery Color Server. If you have installed and configured printer drivers for more than one digital press, Job Monitor automatically establishes connections to all the Integrated Fiery Color Servers.

1 Server



**7 Click Update, which is located in the upper-right corner of the Printer tab.**

**8 Click OK to close the Printing Preferences window.**

The Job Monitor icon (  ) appears on the desktop and in the Windows taskbar of your computer.

## E-mail Service

E-mail Service allows you to control the Integrated Fiery Color Server using your current e-mail infrastructure, print to remote locations, and bypass firewalls. E-mail Service is not application-specific. You can use any e-mail infrastructure.

The Integrated Fiery Color Server supports internal address books. Administrators can retrieve, add, delete, and clear addresses from the address books by sending requests through e-mail. For more information about address books, see *Configuration and Setup*.



To set up E-mail Service, see WebTools Configure Help.

Use E-mail Service in the following ways:

- Print a job from an e-mail application.

To print with an e-mail client, you send a file as an e-mail attachment. E-mail Service extracts the file and sends it to the Integrated Fiery Color Server. The attachment can be in any format the Integrated Fiery Color Server recognizes (PostScript, PDF, or TIFF).

**NOTE:** E-mail Service does not process files with .vbs, .exe, or .bat extensions.

- Manage jobs using an e-mail application.

You can manage your print jobs by submitting e-mail commands to the Integrated Fiery Color Server using e-mail.

- Scan to E-mail.

You can scan a document and send it to an e-mail address as an attachment or URL. For more information about Scan to E-mail, see [Utilities](#).

## Printing using an e-mail client

You can submit print jobs to the Integrated Fiery Color Server in the form of an e-mail attachment using your e-mail application. When you send an e-mail with an attachment, E-mail Service extracts the file and sends it to the Integrated Fiery Color Server Print queue. The file format must be one supported by the Integrated Fiery Color Server.

By default, anyone can print with an e-mail client, unless the Print address book has been set up by the administrator. If the Print address book has been set up and your e-mail address is not in it, you cannot send files to the Integrated Fiery Color Server via e-mail. For more information about address books, see [Configuration and Setup](#).

When User Authentication is enabled on the Integrated Fiery Color Server, the e-mail attachment must have the appropriate user name and password when it is printed through e-mail printing. As part of creating the e-mail attachment with the Integrated Fiery Color Server printer driver, type the appropriate user name and password in the Job Info tab of the printer driver. The user name and password must match those defined by the administrator in the Users and Groups section of Configure. For information about Users and Groups, see WebTools Configure Help.



**NOTE:** The Direct connection is not supported by the e-mail client feature.

**NOTE:** The following illustrations depict the Microsoft Outlook e-mail application.

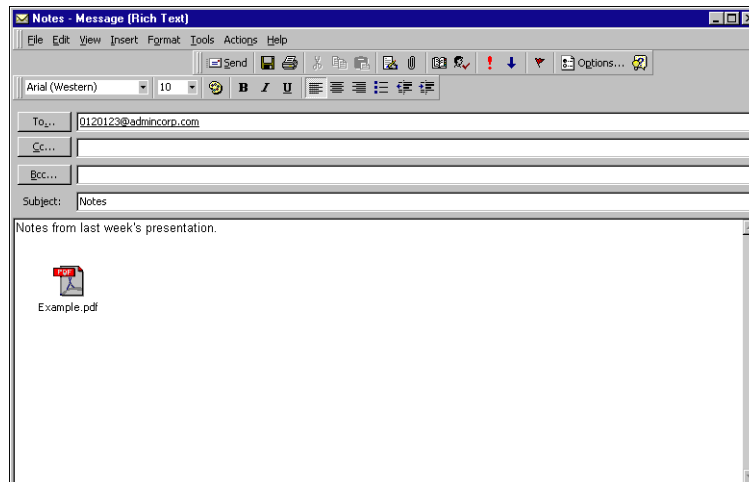
---

### TO PRINT USING AN E-MAIL CLIENT

- 1 **Open your e-mail application.**
- 2 **Type the Integrated Fiery Color Server e-mail address in the To: line.**
- 3 **Type text in the Subject line or leave the Subject line blank.**
- 4 **Attach the file that you want to print.**

The attachment can be in any format the Integrated Fiery Color Server recognizes (PostScript, PDF, or TIFF).

**NOTE:** If your attachment exceeds the file size limitation set by your e-mail system administrator, the e-mail is not sent.



**5 Optionally, you can type text in the body of the message. That text is printed with the file.**

**NOTE:** HTML-formatted e-mail messages are not supported, and they might not print as they appear on the remote workstation. Send e-mail messages in plain text format.

**6 Send the e-mail.**

The file is sent to the Integrated Fiery Color Server and the job is printed. After the Integrated Fiery Color Server receives the job, you receive an e-mail notification that the print job was accepted. The e-mail provides a job identification (ID). Use the job IDs to manage jobs with e-mail commands (see the following section). The e-mail notification indicates any current error at the digital press.

After the job has been printed, you are sent a second e-mail notification that indicates the job printed successfully.

## Managing print jobs with e-mail commands

You can manage your print jobs by submitting commands to the Integrated Fiery Color Server using e-mail. You can cancel a job, check job status, and get help on a job. When you send a command, the Integrated Fiery Color Server returns an e-mail response.

---

### To MANAGE PRINT JOBS WITH E-MAIL COMMANDS

**1 In your e-mail application, type the Integrated Fiery Color Server e-mail address in the To: line.**

**2 Type one of the following commands in the Subject line:**

**To check the status of a job, type #JobStatus<job id> in the Subject line.**

You receive a reply to your job status query. You can only get the status of the job if you sent the job or are an administrator.

**To cancel a job, type #CancelJob<job id> in the Subject line.**

You receive a notification indicating that the job has been cancelled and did not print to the Integrated Fiery Color Server. You can only cancel a job if you sent the job or are an administrator.

**To get help, type #Help in the Subject line.**

You receive an e-mail response that contains links that allow you to cancel jobs, check job status, and search and manage address books. Click any of the links to perform a command.

**3 Send the e-mail to the Integrated Fiery Color Server.**

## Printing from a USB device

You can print files on a USB device to the Integrated Fiery Color Server. To do so, save files to the USB device and download them directly to the Integrated Fiery Color Server. You can print files that originated on Windows computers.

You can print files automatically from a USB device to one of the standard print queues on the Integrated Fiery Color Server (Print, Hold, or Direct) or to published virtual printers. Verify with your administrator that these connections are published in Setup. For more information about virtual printers, see [Utilities](#).

Before you print files from a USB device, ask your administrator to configure the appropriate options. For more information about configuring the appropriate options, see [Configuration and Setup](#).

### Automatic printing

To print automatically to Print, Hold, or Direct queues, or to published virtual printers with the Print All setting, set up folders on your USB device with the names Print, Hold, and Direct, and the names of any published virtual printers. When you plug the USB device into a USB port on the Integrated Fiery Color Server, the files in those folders are sent automatically to the corresponding queues.

---

#### TO PRINT FILES FROM THE USB DEVICE



**1 Configure the USB printing options in Setup.**

For more information, see Configure Help.

**2 Create folders at the top (root) level of the USB device named Print, Hold, and Direct.**

**3 Copy the files (PS, EPS, PCL, TIFF, and PDF) from the user's computer to the USB device.**

Files copied to the Print, Hold, and Direct, folders are downloaded to the corresponding print connection on the Integrated Fiery Color Server automatically when you connect the USB device to the Integrated Fiery Color Server. Files copied to the root level of the USB device are downloaded to the Print queue.

**4 Remove the USB device from the computer and connect it to the USB connector on the Integrated Fiery Color Server.**

For the location of the USB port, see [Configuration and Setup](#).



Make sure that the USB device is properly stopped before you disconnect it from the computer.

## FTP printing

If FTP Services are enabled on the Integrated Fiery Color Server, the Integrated Fiery Color Server is set up as an FTP server. You can send jobs to the Integrated Fiery Color Server using FTP printing. For more information about configuring FTP Services, see [Configuration and Setup](#).

You can use any FTP client software. Before you use FTP printing, the FTP client software requires the following information (see your administrator):

- IP address or DNS name for the Integrated Fiery Color Server
- Directory or path to send the job to, such as the Print Queue, Hold Queue, or published virtual printers (if supported)

**NOTE:** You cannot print to the Direct connection using FTP printing.

- User name and password (if required)

You can send PostScript (PS), Printer Control Language (PCL), Tagged Image File Format (TIFF), and Portable Document Format (PDF) files to the Integrated Fiery Color Server. Encapsulated PostScript (EPS) files are not supported for FTP printing.

---

### TO PRINT FILES TO THE INTEGRATED FIERY COLOR SERVER USING THE FTP PROTOCOL

#### 1 Connect to the Integrated Fiery Color Server with your FTP client software.

Folders corresponding to the Print queue and Hold queue are displayed. Folders for any published virtual printer are also displayed.

#### 2 Navigate to the folder representing the print connection or published virtual printer.

#### 3 Upload your job to the folder that you want.

After the job is printed, it is deleted from the Integrated Fiery Color Server.



## PRINTING

This chapter describes printing to the Integrated Fiery Color Server. You can print from a networked Windows computer or a computer using Windows (WINS) printing. You can also print to a file so that it can be printed at a remote location (see [“Saving files to print at a remote location”](#) on page 53). In addition to these methods, you can download certain types of files to the Integrated Fiery Color Server using the Docs tab in WebTools (see [Utilities](#)) and Command WorkStation (see [Utilities](#)), and print documents using Hot Folders (see [Utilities](#)) and E-mail Services (see [“E-mail Service”](#) on page 27).

For information about setting up the Windows environment for printing with Windows servers connected to the Integrated Fiery Color Server, see [Configuration and Setup](#). For information about connecting to the Integrated Fiery Color Server over the network, see [Setting Up Printing Connections](#). For information about installing printer drivers, see [Installing Printer Drivers](#).

**NOTE:** The following procedures use Windows XP illustrations unless specified.

### Printing from applications

After you install the Integrated Fiery Color Server printer driver and configure the proper port, you can print directly from most Windows applications. Set the print options for the job and choose Print from your application.

To achieve optimal printing results from specific applications, see [Color Printing](#) and [Fiery Color Reference](#).

### Setting options and printing

To print from Windows platforms, install the PostScript printer driver or PCL printer driver. For instructions, see [Installing Printer Drivers](#). Be sure to configure the options in the Advanced tab of the printer driver after installation is complete, as described on [page 12](#).

If you print to a virtual printer, you may not be able to set some print options, depending on how the virtual printer is configured.

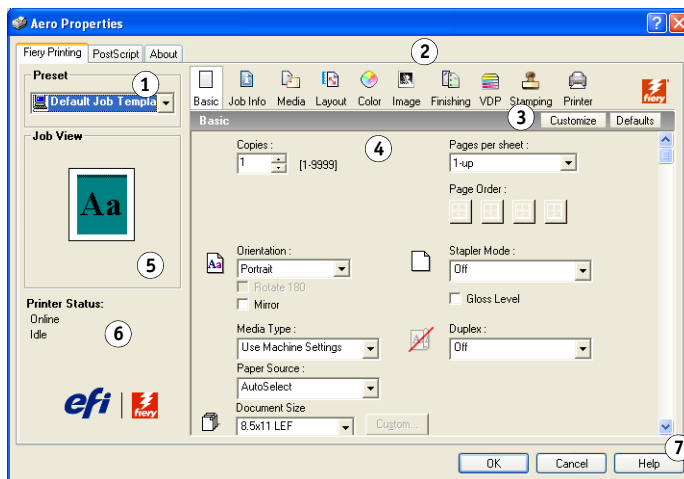
The following procedures explain how to use the printer driver to specify print options for a particular job and print it to the Integrated Fiery Color Server. You can also set default print settings using the driver. For information about specific print options, see [Print Options](#).

**NOTE:** The following procedures use Windows XP illustrations. The interface may vary slightly depending on whether you are using the PostScript or PCL driver. Major differences are noted.

**TO SET PRINT OPTIONS FOR A SPECIFIC WINDOWS PRINT JOB USING THE PCL OR POSTSCRIPT PRINTER DRIVER**

- 1 Choose Print in your application.
- 2 Select the Integrated Fiery Color Server as your printer and click Properties.
- 3 Click the Fiery Printing tab.

- 1 Presets (Job Templates), see Help
- 2 Print Option icons
- 3 Customize (Shortcuts), see Help
- 4 Active area
- 5 Job View
- 6 Printer Status
- 7 Help

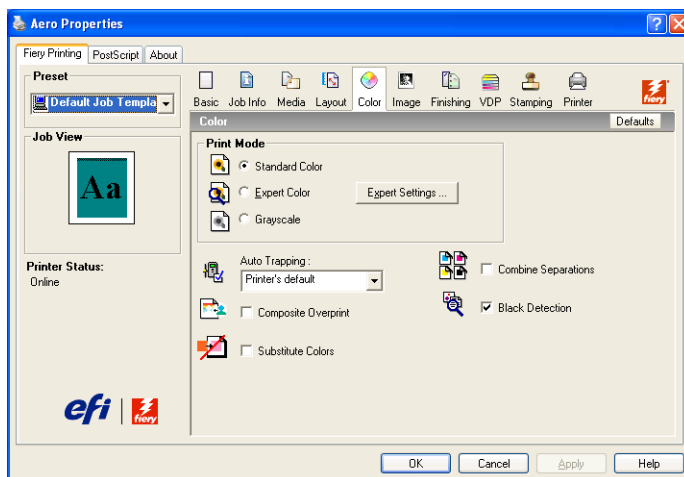


The Fiery Printing tab serves as the control center for all frequently used printing functions.

**NOTE:** Supported tabs and print options may vary between Windows PostScript and PCL printer drivers. For a complete list of print options, see [Print Options](#).

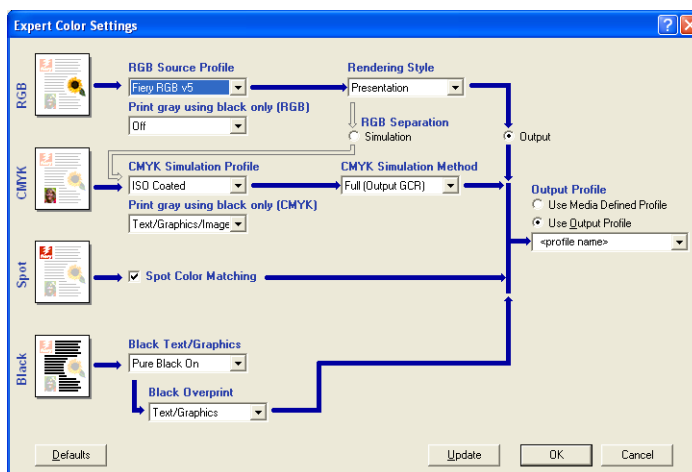
- 4 Click the Color icon and specify the color profile options for the job.

In the Print Mode area, select a color mode for the job. To use advanced color management features, such as Rendering Style, click Expert Settings and proceed to [step 5](#). Otherwise, proceed to [step 7](#).

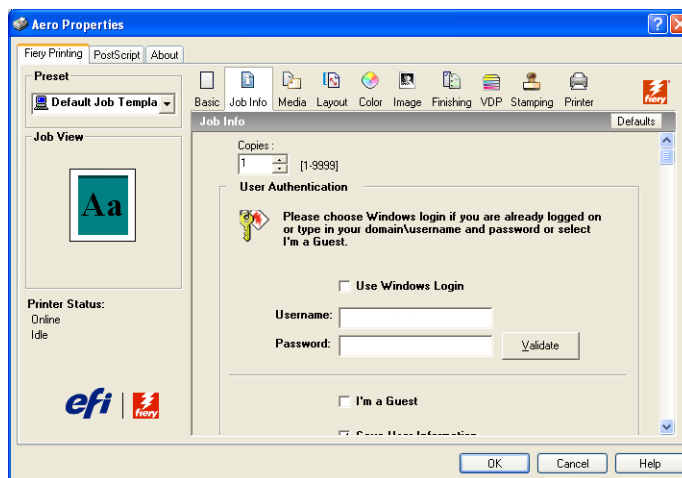


- 5 In the Expert Color Settings dialog box, click Update to display the current Integrated Fiery Color Server settings.

If the Update button does not appear, make sure that the Two-Way Communication option is selected, as described in “Configuring installed options and updating print options settings automatically” on page 25.



- 6 Specify the color settings for the print job and click OK.
- 7 Click the Job Info icon.



- 8 Type information in the Notes 1 and Notes 2 fields.

Enter user and job identification information for managing purposes, or other information that is required at your site.

The information that you type in this field can be viewed and edited by the operator in Command WorkStation and also appears in the Job Log.

For more information about Command WorkStation, see [Utilities](#).

**9 Type instructions to the operator about the job in the Instructions field.**

These instructions are displayed in Command WorkStation, but do not appear in the Job Log. These instructions can be edited by the operator.

**10 Type a user name and password in the User Authentication area.**

The user name that you type in the User Authentication area can be your network domain\user name or a local user name. Check with your system administrator about the requirements for your system.

If you do not have a user name and password, select the I'm a Guest option. The print server must be configured to allow guest printing. Otherwise, clear the I'm a Guest option.

If you are not using a network user name and password, you can type your domain\user name and password in the fields provided. Click Validate to validate the user name and password.

When the Use Windows Login option is selected, the LDAP domain user name and password are used as an authenticated user name. This is available only if the user has logged on to the Windows computer as a domain user.

Select the Save User Information option to save your user name and password.

**11 Type a password in the Secure Print field if you are sending a secure print job.****12 Click the remaining print option icons to specify the appropriate settings for the print job and click OK.**

These print options are specific to the Integrated Fiery Color Server and the digital press. They override settings specified in Integrated Fiery Color Server Printer Setup, but can be overridden from Command WorkStation. For information about these options and overrides, see [Print Options](#). For more information about Command WorkStation, see [Utilities](#).

Some print options are available only if a particular installable option has been configured. For information about configuring installable options, see [Configuring Installable Options](#).

If you choose Printer's default, the job prints according to the settings specified in Setup. For more information, see [Print Options](#).

**NOTE:** If you specify incompatible print settings, the Conflict dialog box provides instructions to resolve the conflict.

**13 From your application, click OK to send your print job.**

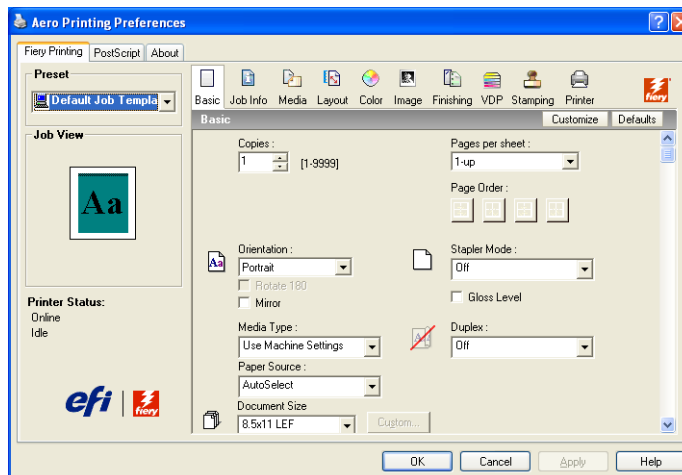
Make sure that the Integrated Fiery Color Server is selected as your current printer.

**NOTE:** Some print options that are selectable from an application are similar to print options that are specific to the Integrated Fiery Color Server and the digital press. In these cases, use the print options specific to the Integrated Fiery Color Server and the digital press. These options appear in the Fiery Printing tab. The application may not set up the file properly for printing on the Integrated Fiery Color Server, resulting in unexpected finishing, printing errors, or longer processing time.

**NOTE:** With the E-mail Notification feature enabled in the printer driver as described in “[To enable Two-Way Communication](#)” on page 25, you receive an e-mail notification after your job is printed or when a printing error occurs.

#### TO SET DEFAULT PRINT OPTIONS FOR WINDOWS PRINT JOBS USING THE POSTSCRIPT PRINTER DRIVER

- 1 **Windows 2000:** Click Start, choose Settings, and then choose Printers.  
**Windows XP:** Click Start and choose Printers and Faxes.  
**Windows Server 2003:** Click Start, choose Control Panel, and then choose Printers and Faxes.  
**Windows Vista:** Click the Start button, choose Control Panel, and then double-click Printers.
- 2 Right-click the Integrated Fiery Color Server icon and choose Printing Preferences.
- 3 If the Fiery Printing tab is not displayed, click it.



- 4 Specify the default settings for your print job, as described on [page 34](#).
- 5 Click OK to close the dialog box.

### Adding and editing watermarks

The Windows printer driver provides the watermarks feature. This feature allows you to select from a list of available watermarks; create new watermarks; edit text, font, font size, color, position, and orientation of the watermark; delete the currently selected watermark; and specify other settings. The watermark feature is a stamp and writes over the text in the document.



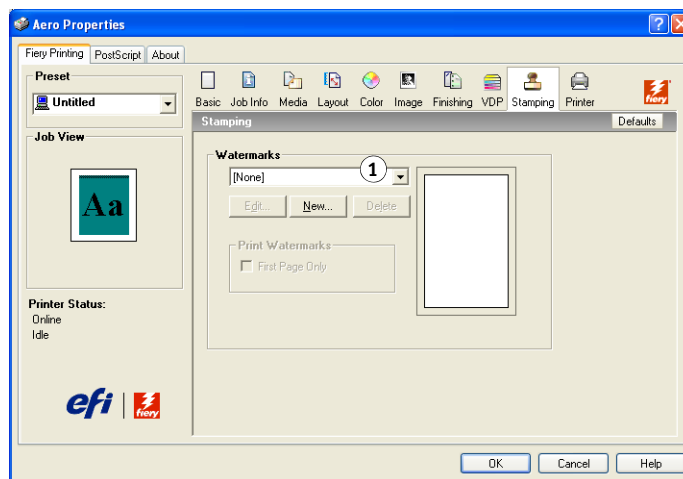
The following procedure describes how to edit watermarks. For more information, see Driver Help.

---

#### TO ADD AND EDIT WATERMARKS

- 1 On the Fieri Printing tab, click the Stamping icon.

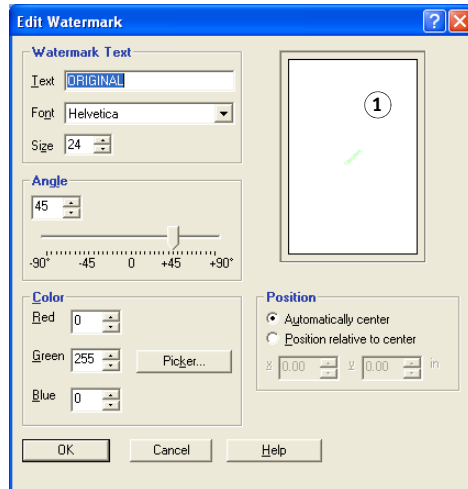
- 1 Select an available watermark



**2 Select a watermark from the menu and click Edit.**

The Edit Watermark dialog box appears.

**1 Preview area**



**3 Specify Font and Size of the text in the Watermark Text area.**

**4 Specify an angle for the watermark text in the Angle area.**

Alternatively, you can click and hold one end of the watermark text in the preview area and drag it to the desired orientation.

**5 Specify a color for the watermark text in the Color area.**

**6 Specify the position of the watermark text in the Position area.**

Alternatively, you can click and hold the center of the watermark text in the preview area and drag it to the desired position.

**7 Click OK.**

**8 Specify how you want the watermark text to appear on the output in the Print Watermarks area.**

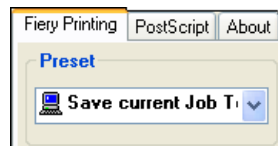
## Using presets

Saving print option settings to your hard disk enables you to load specifically configured settings for a particular job as a preset. You can also share presets over a network, using the Import and Export features.

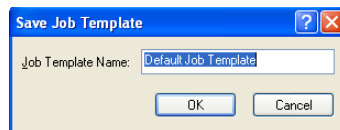
---

### TO CREATE A PRESET

- 1 Windows 2000:** Click Start, choose Settings, and then choose Printers.  
**Windows XP:** Click Start and choose Printers and Faxes.  
**Windows Server 2003:** Click Start, choose Control Panel, and then choose Printers and Faxes.  
**Windows Vista:** Click the Start button, choose Control Panel, and then double-click Printers.
- 2 Right-click the Integrated Fiery Color Server icon and choose Printing Preferences.**
- 3 Click the Fiery Printing tab.**
- 4 Adjust the print settings on the Fiery Printing tab as desired.**
- 5 Under Preset, choose Save current Job Template.**



- 6 Enter a descriptive name for the preset (a maximum of 32 characters) and click OK.**



The preset is added to the list of available presets.

The presets are available any time you access the Fiery Printing tab. They remain on your local disk until you delete them.

---

### TO CHOOSE A PRESET FOR PRINT JOBS

The Fiery Printing tab shows which, if any, presets are available for all print jobs.

- 1 Windows 2000:** Click Start, choose Settings, and then choose Printers.  
**Windows XP:** Click Start and choose Printers and Faxes.  
**Windows Server 2003:** Click Start, choose Control Panel, and then choose Printers and Faxes.  
**Windows Vista:** Click the Start button, choose Control Panel, and then double-click Printers.
- 2 Right-click the Integrated Fiery Color Server icon and choose Printing Preferences.**
- 3 Click the Fiery Printing tab.**



**4 Under Preset, select a different preset.**

The preset is used until you select another one.

**NOTE:** When you access the Fiery Printing tab from an application's Print dialog box and select a preset, the preset is used only for the current application session.

If the preset you want is not displayed, but you previously backed it up to a disk (exported it), you can import it to use again.

---

**TO DELETE PRESETS****1 Windows 2000: Click Start, choose Settings, and then choose Printers.**

**Windows XP: Click Start and choose Printers and Faxes.**

**Windows Server 2003: Click Start, choose Control Panel, and then choose Printers and Faxes.**

**Windows Vista: Click the Start button, choose Control Panel, and then double-click Printers.**

**2 Right-click the Integrated Fiery Color Server icon and choose Printing Preferences.****3 Click the Fiery Printing tab.****4 Under Preset, choose Save and manage list of Job Temp.**

The Job Templates dialog box appears.

**5 Select the preset that you want to delete and click Delete.****6 Click OK to close the Job Templates dialog box.**

---

**TO REVERT TO THE DEFAULT PRESET****1 Windows 2000: Click Start, choose Settings, and then choose Printers.**

**Windows XP: Click Start and choose Printers and Faxes.**

**Windows Server 2003: Click Start, choose Control Panel, and then choose Printers and Faxes.**

**Windows Vista: Click the Start button, choose Control Panel, and then double-click Printers.**

**2 Right-click the Integrated Fiery Color Server icon and choose Printing Preferences.****3 Click the Fiery Printing tab.****4 Under Preset, choose Default Job Template.**

---

**TO EXPORT (OR BACK UP) A PRESET TO A HARD DISK****1 Windows 2000: Click Start, choose Settings, and then choose Printers.**

**Windows XP: Click Start and choose Printers and Faxes.**

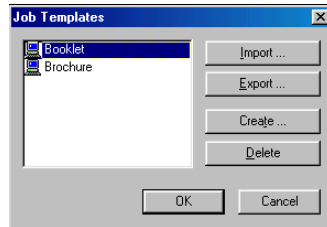
**Windows Server 2003: Click Start, choose Control Panel, and then choose Printers and Faxes.**

**Windows Vista: Click the Start button, choose Control Panel, and then double-click Printers.**

**2 Right-click the Integrated Fiery Color Server icon and choose Printing Preferences.****3 Click the Fiery Printing tab.**

**4 Under Preset, choose Save and manage list of Job Temp.**

The Job Templates dialog box appears.

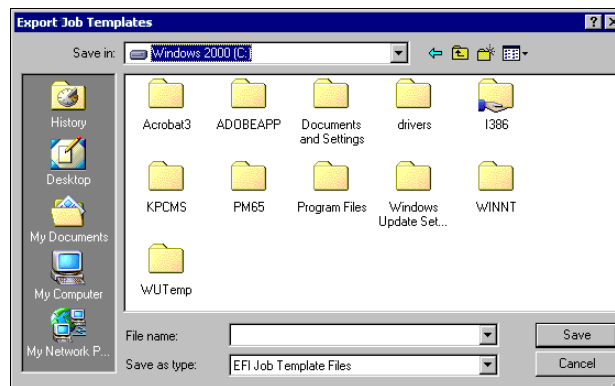


**5 Click a name to select the saved preset that you want to export or back up.**

**6 Click Export.**

**7 In the Export Job Templates dialog box, browse to select a folder in which to save the preset.**

**8 Enter a short file name for the exported preset and click Save.**



The file includes the long name that you gave the preset when you created it and has the .sav extension.

---

**TO IMPORT (RESTORE) A PRESET SAVED ON A DISK**

**1 Windows 2000: Click Start, choose Settings, and then choose Printers.**

**Windows XP: Click Start and choose Printers and Faxes.**

**Windows Server 2003: Click Start, choose Control Panel, and then choose Printers and Faxes.**

**Windows Vista: Click the Start button, choose Control Panel, and then double-click Printers.**

**2 Right-click the Integrated Fiery Color Server icon and choose Printing Preferences.**

**3 Click the Fiery Printing tab.**

**4 In the Fiery Printing tab, under Preset, choose Save and manage list of Job Temp.**

The Job Templates dialog box appears.

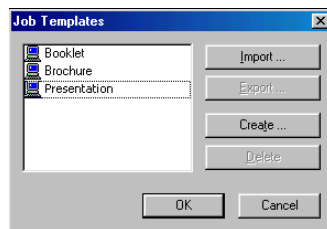
**5 Click Import.**

**6 Browse to the disk and folder containing the preset that you want to import.**

7 Select the preset file and click Open.



8 Click OK to close the Job Templates dialog box.



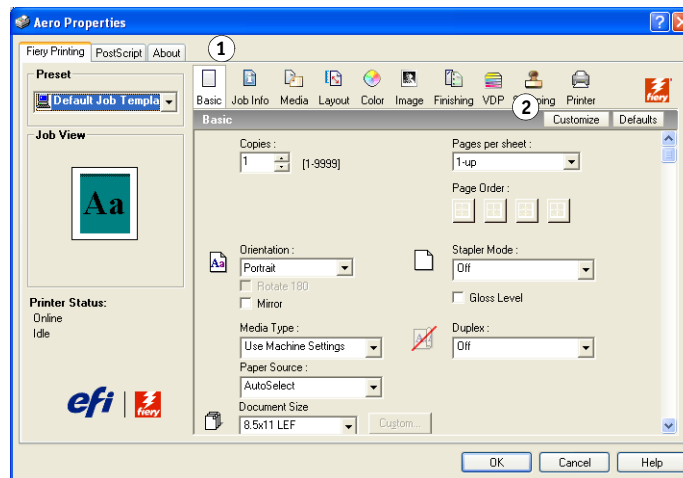
**NOTE:** When you import presets, they appear in the Preset menu under the preset name, not the file name. In the preceding examples, the file present.sav (file name) was imported, but it appears in the Preset menu as Presentation (preset name).

## Customizing the Basic icon

The Basic icon is on the Fiery Printing tab. You can customize it with the print options you use frequently. This saves time because you do not have to open all of the other print option icons if you only want to set the options in Basic. Basic initially contains a default group of print options. You can remove these options and add others.

**NOTE:** When you place a print option in Basic, it still appears under its appropriate print option icon. You can set the option from either location.

- 1 Basic icon
- 2 Customize (Shortcuts)

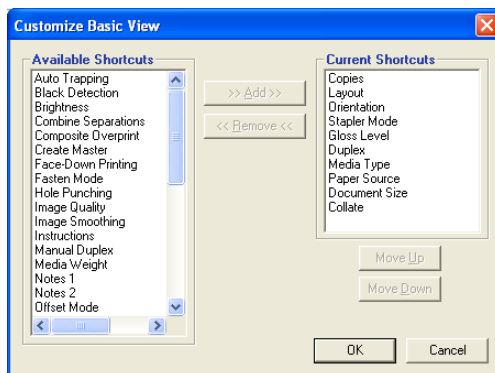


### TO CUSTOMIZE THE BASIC ICON:

- 1 **Windows 2000:** Click Start, choose Settings, and then choose Printers.  
**Windows XP:** Click Start and choose Printers and Faxes.  
**Windows Server 2003:** Click Start, choose Control Panel, and then choose Printers and Faxes.  
**Windows Vista:** Click the Start button, choose Control Panel, and then double-click Printers.
- 2 Right-click the Integrated Fiery Color Server icon and choose Printing Preferences.
- 3 Click the Fiery Printing tab.

**4 Click the Basic icon and then click Customize.**

The Customize Basic View dialog box is displayed. The dialog box contains the shortcuts for print options. The print options that currently appear in Basic are listed under Current Shortcuts.



**5 To add an option to Basic, select the desired option in the Available Shortcuts list and click Add.**

**6 To remove an option from Basic, select the desired option in the Current Shortcuts list and click Remove.**

**7 To reorder the display of options in Basic, select an option in the Current Shortcuts list and click Move Up or Move Down.**

**8 Click OK to save your changes.**

**NOTE:** The Basic window cannot be empty. If you remove all options from the Basic window, it reverts to the default group of options.

## Retrieving secure print jobs on the digital press control panel

The Secure Print feature allows you to print sensitive or confidential jobs only when you are present at the digital press. Before you send a job to print, you first type a password into the Secure Print field in the printer driver. To print your Secure Print job, you re-type the password at the digital press control panel as described in the following procedures.

---

### TO SEND A SECURE PRINT JOB

- 1 Choose Print from the application's File menu.
- 2 Choose the Integrated Fiery Color Server as your printer and click Properties.
- 3 Click the Fiery Printing tab.
- 4 Click the Job Info tab.
- 5 Type a password in the Secure Print field.

**NOTE:** The password is limited to alphanumeric characters (do not use symbols).

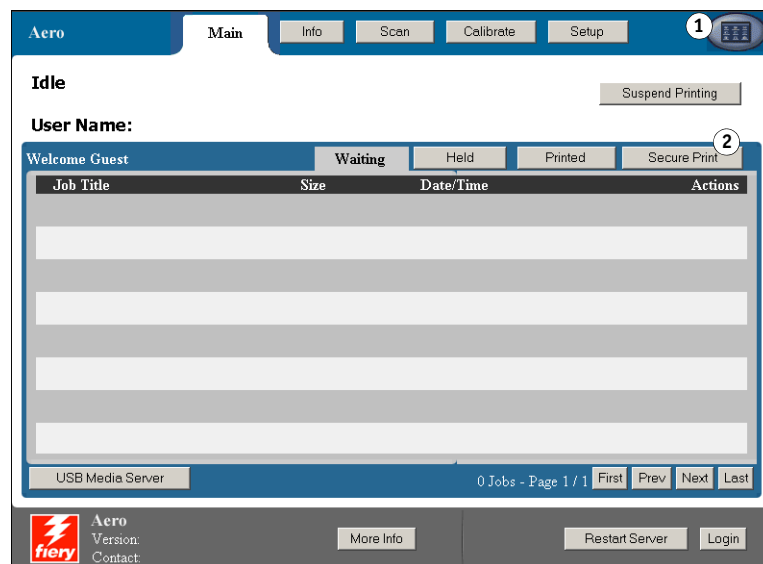
- 6 Type values for the other fields as needed and then send your job to the Integrated Fiery Color Server.
- 7 Click OK.
- 8 Click OK.

---

#### TO RETRIEVE A SECURE PRINT JOB

- 1 At the digital press control panel, press the All Services button.
- 2 Select Web Applications.

- 1 All Services button
- 2 Secure Print



- 3 Select Secure Print from the Main page.

The Secure Print password window appears.

- 4 Type the same password you entered in the Secure Print field of the printer driver.

The jobs that match the password are displayed in the Login window.

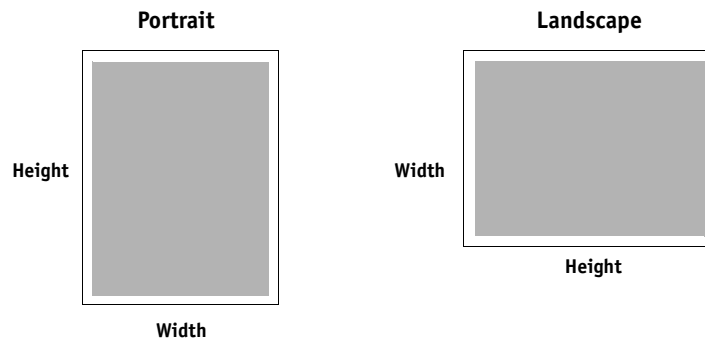
- 5 Select your print job and choose either Print or Delete.

The screen returns to the Main page after 45 seconds without activity. After the screen returns to the Main page, you must re-type the Secure Print password.

- 6 Select the desired number of copies and select Print, Print and Hold, or Cancel.

## Defining and printing custom page sizes

With custom page sizes, you define the dimensions of a printed page. After you define a custom page size, you can use it from within an application without redefining it each time you print. When you create custom page sizes, specify Width dimensions to correspond with the shorter side of your job and specify Height dimensions to correspond with the longer side of your job. Set custom page sizes in this way, regardless of the orientation settings in the application.



**NOTE:** Custom page sizes are not supported with Imposition jobs.

When you define or edit a custom page size, or print your job on a custom page size in the Windows PostScript printer driver, use the following procedures.

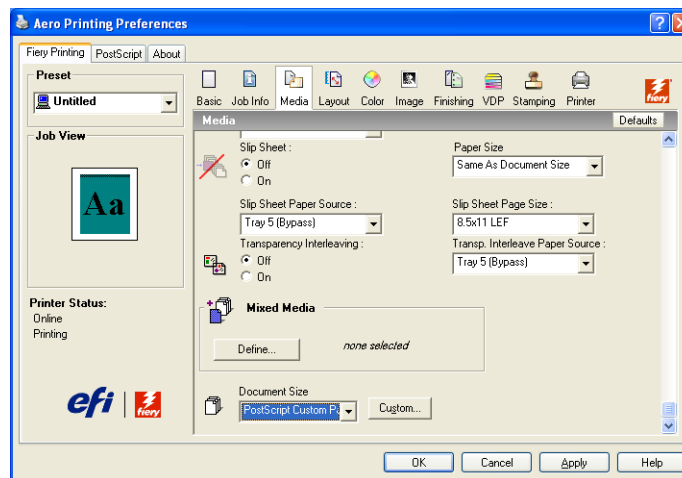
**NOTE:** Windows 2000/XP/Server 2003/Vista have a similar interface when setting options and printing. The following procedures use Windows 2000 illustrations with Windows XP/Server 2003/Vista differences noted.

### Custom page sizes for Windows PostScript printer driver

When you define or edit a custom page size, or print your job on a custom page size in the PostScript printer driver, use the following procedures.

### TO DEFINE A CUSTOM PAGE SIZE WITH THE WINDOWS POSTSCRIPT PRINTER DRIVER

- 1 **Windows 2000:** Click Start, choose Settings, and then choose Printers.  
**Windows XP:** Click Start and choose Printers and Faxes.  
**Windows Server 2003:** Click Start, choose Control Panel, and then choose Printers and Faxes.  
**Windows Vista:** Click the Start button, choose Control Panel, and then double-click Printers.
- 2 Right-click the Integrated Fiery Color Server PS icon and choose Printing Preferences.
- 3 Click the Media icon.

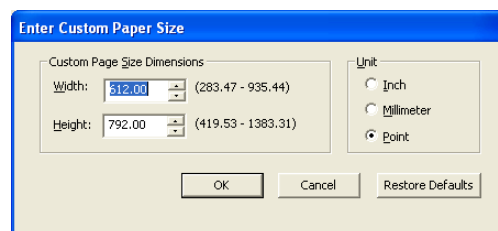


**NOTE:** Document Size is the page size defined in your original application's Print setup (or Page Setup) dialog box. Paper size is the size of the actual sheet of paper on which your job will print.

In cases when printing one document page per sheet of paper, Document size is usually the same as the Paper size. However, it may differ when printing booklets or imposing multiple document pages on a single sheet.

- 4 **Choose PostScript Custom Page Size from the Document Size menu and then click Custom.**

The Enter Custom Paper Size dialog box appears.





**5 Specify options to define the custom page size.**

**Custom Page Size Dimensions:** Specify the width and height of the print job.

**Unit:** Select a unit of measurement for the print job.

**6 Click OK to close the Enter Custom Paper Size dialog box.**

**7 Click OK to close the Printing Preferences dialog box.**

You can now specify the custom page size from an application.

---

**TO EDIT A CUSTOM PAGE SIZE WITH THE WINDOWS POSTSCRIPT PRINTER DRIVER**

**1 Windows 2000: Click Start, choose Settings, and then choose Printers.**

**Windows XP: Click Start and choose Printers and Faxes.**

**Windows Server 2003: Click Start, choose Control Panel, and then choose Printers and Faxes.**

**Windows Vista: Click the Start button, choose Control Panel, and then double-click Printers.**

**2 Right-click the Integrated Fiery Color Server icon and choose Printing Preferences.**

**3 Click the Media icon.**

**4 Choose PostScript Custom Page Size from the Document Size menu and then click Custom.**

The Enter Custom Paper Size dialog box appears.

**5 Edit the settings, as described on [page 49](#), and click OK.**

---

**TO PRINT A CUSTOM PAGE SIZE WITH THE WINDOWS POSTSCRIPT PRINTER DRIVER**

**1 Choose Print from your application.**

**2 Select the Integrated Fiery Color Server as the printer and click Properties.**

**3 Click the Fiery Printing tab and then click the Media icon.**

**4 From the Paper Source menu, choose the paper tray that contains the custom-size paper for the job.**

The Paper Source selection is valid for the current job only.

**5 Select PostScript Custom Page Size from the Document Size menu.**

**6 Click the Layout icon.**

**7 Select a setting from Orientation, according to the way the custom size paper is loaded.**

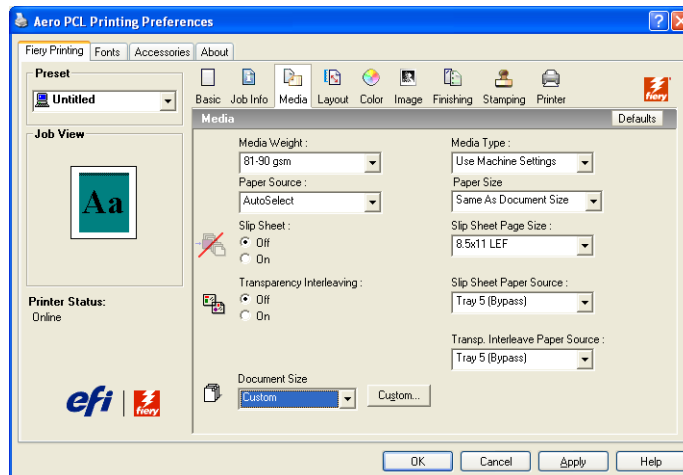
**8 Click OK, and then click OK again to print the job.**

### **Custom page sizes for Windows PCL printer driver**

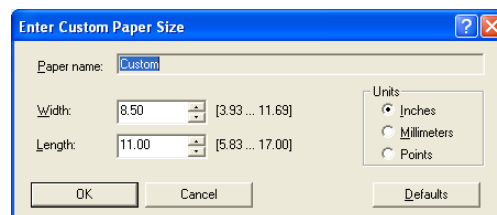
When you define or edit a custom page size, or print your job on a custom page size in the PCL printer driver, use the following procedures.

### TO DEFINE A CUSTOM PAGE SIZE WITH ALL WINDOWS PCL PRINTER DRIVERS

- 1 Click Start.
- 2 Windows 2000: Choose Settings and then Printers.  
Windows XP: Choose Printers and Faxes.  
Windows Server 2003: Choose Settings and then Printers and Faxes.  
Windows Vista: Choose Control Panel and then double-click Printers.
- 3 Right click the Integrated Fiery Color Server PCL icon and choose Printing Preferences.
- 4 Click the Fiery Printing tab and click the Media icon.
- 5 Select Custom from the Document Size menu and click Custom.



- 6 Specify options to define the custom page size.



**Width:** Specify the width of the print job.

**Length:** Specify the length of the print job.

**Units:** Select a unit of measurement for the print job.

- 7 Click OK to close the Enter Custom Paper Size dialog box.
- 8 Click OK to close the Integrated Fiery Color Server printer driver.

---

**TO EDIT A CUSTOM PAGE SIZE WITH ALL WINDOWS PCL PRINTER DRIVERS**

- 1 Click Start.
- 2 **Windows 2000: Choose Settings and then Printers.**  
**Windows XP: Choose Printers and Faxes.**  
**Windows Server 2003: Choose Settings and then Printers and Faxes.**  
**Windows Vista: Choose Control Panel and then double-click Printers.**
- 3 Right-click the Integrated Fiery Color Server PCL icon and choose Printing Preferences.
- 4 Click the Fiery Printing tab and click the Media icon.
- 5 Select Custom from the Document Size menu and then click Custom.
- 6 Specify the new options to define the custom page size.  
**Width:** Specify the width of the print job.  
**Length:** Specify the length of the print job.  
**Units:** Select a unit of measurement for the print job.
- 7 Click OK to close the Enter Custom Paper Size dialog box.
- 8 Click OK to close the Integrated Fiery Color Server printer driver.

---

**TO PRINT A CUSTOM PAGE SIZE WITH ALL WINDOWS PCL DRIVERS**

- 1 Choose Print from your application.
- 2 Select the Integrated Fiery Color Server PCL icon as the printer and click Properties.
- 3 Click the Fiery Printing tab, and then click the Media icon.
- 4 From the Paper Source list, choose the paper tray that contains the custom-size paper for the job.  
  
The Paper Source selection is valid for the current job only.
- 5 Select Custom from the Document Size menu.
- 6 Click OK and then click OK again to print the job.

## Viewing the digital press status

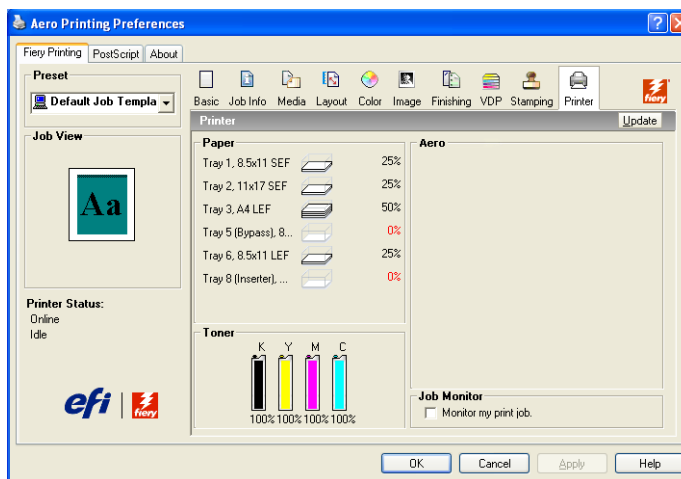


If you have enabled Two-Way Communication for your printer, you can monitor the status of the printer, including the levels of consumable materials, such as paper and toner. For more information, see Driver Help.

For information about enabling Two-Way Communication, see [“To enable Two-Way Communication”](#) on page 25.

### TO VIEW THE STATUS OF THE DIGITAL PRESS CONSUMABLES

- 1 **Windows 2000:** Click Start, choose Settings, and then choose Printers.  
**Windows XP:** Click Start and choose Printers and Faxes.  
**Windows Server 2003:** Click Start, choose Control Panel, and then choose Printers and Faxes.  
**Windows Vista:** Click the Start button, choose Control Panel, and then double-click Printers.
- 2 **Right-click the Integrated Fiery Color Server icon and choose Printing Preferences.**
- 3 **Click the Fiery Printing tab.**
- 4 **Click the Printer icon and click Update.**



Printer status is displayed in two places on the Fiery Printing tab:

- **Printer Status (on the left side of the window under the document thumbnail image):** Displays error conditions that can prevent you from printing.
- **Under the Printer icon:** Displays information about the level of both available paper in each tray and available toner (if applicable), as well as a thumbnail image of the printer and its installed options.

To update this status information, click Update.

## **Saving files to print at a remote location**

If you do not have an Integrated Fiery Color Server onsite and are preparing files to take to a service bureau or other location, print the final files to the File port (as opposed to one of the local ports). You can also print to the File port to create a file to download using the Docs WebTool. For instructions on printing to the File port, see the documentation that accompanies Windows.



# INDEX

## C

- ColorWise print options 25
- custom page size, *see* defining a custom page size, printing a custom page size

## D

- default print options 37
- defining a custom page size
  - all Windows PCL printer drivers 47, 49
  - Windows 2000/XP/Server 2003/Vista 47
- digital press status 52
- Docs tab in WebTools 33
- Downloads tab in WebTools 11

## E

- E-mail Notification 25
- E-mail Service
  - about 27
  - Manage print jobs 30

## F

- File port, saving files to 53
- FTP Printing 32

## I

- installable options
  - configuring from printer driver 24
  - updating automatically 25
- installing
  - Job Monitor 26
  - printer driver from User Software DVD 12
  - printer drivers using Point and Print 8
  - virtual printers using Point and Print 15
- IPP connection 22

## J

- Job Info icon 35
- Job Monitor
  - configuring server connection 26
  - installing 26
  - on User Software DVD 7

## L

- LPR connection 19

## M

- Manage print jobs with e-mail commands 30
- managing print jobs 30

## N

- Notes field 35

## O

- overriding Printer Setup settings 36

## P

- PCL printer driver 33
- Point and Print 8, 15
- PostScript Printer Description file, *see* PPD
- PostScript printer driver
  - deleting 16
  - download using WebTools 11
  - installing from User Software DVD 12
  - installing using Point and Print 8

## PPD

- overview 7
- Windows 13
- print options 34
- Printer Delete Utility 16
- Printer's default 36
- printing
  - from an application 33
  - to File port 53
  - using an E-mail client 28
- printing a custom page size
  - Windows 2000/XP/Server 2003/Vista 49
- printing connections, supported types 18
- Prntdrv.exe file 11

## S

- secure print jobs
  - sending and receiving 45
- SMB printing
  - completing connection 18
  - setup 9

**T**

TCP/IP connection 19  
Two-Way Communication 25, 35

**U**

USB device 31  
User Authentication 36

**V**

virtual printer  
installing using Point and Print 15  
setup 15

**W**

watermarks  
adding and editing 38  
WebTools  
Docs tab 33  
Downloads tab 11  
Windows  
IPP connection 22  
LPR or Port 9100 connection 19  
printer driver, installing from User Software  
DVD 12  
TCP/IP connection 19