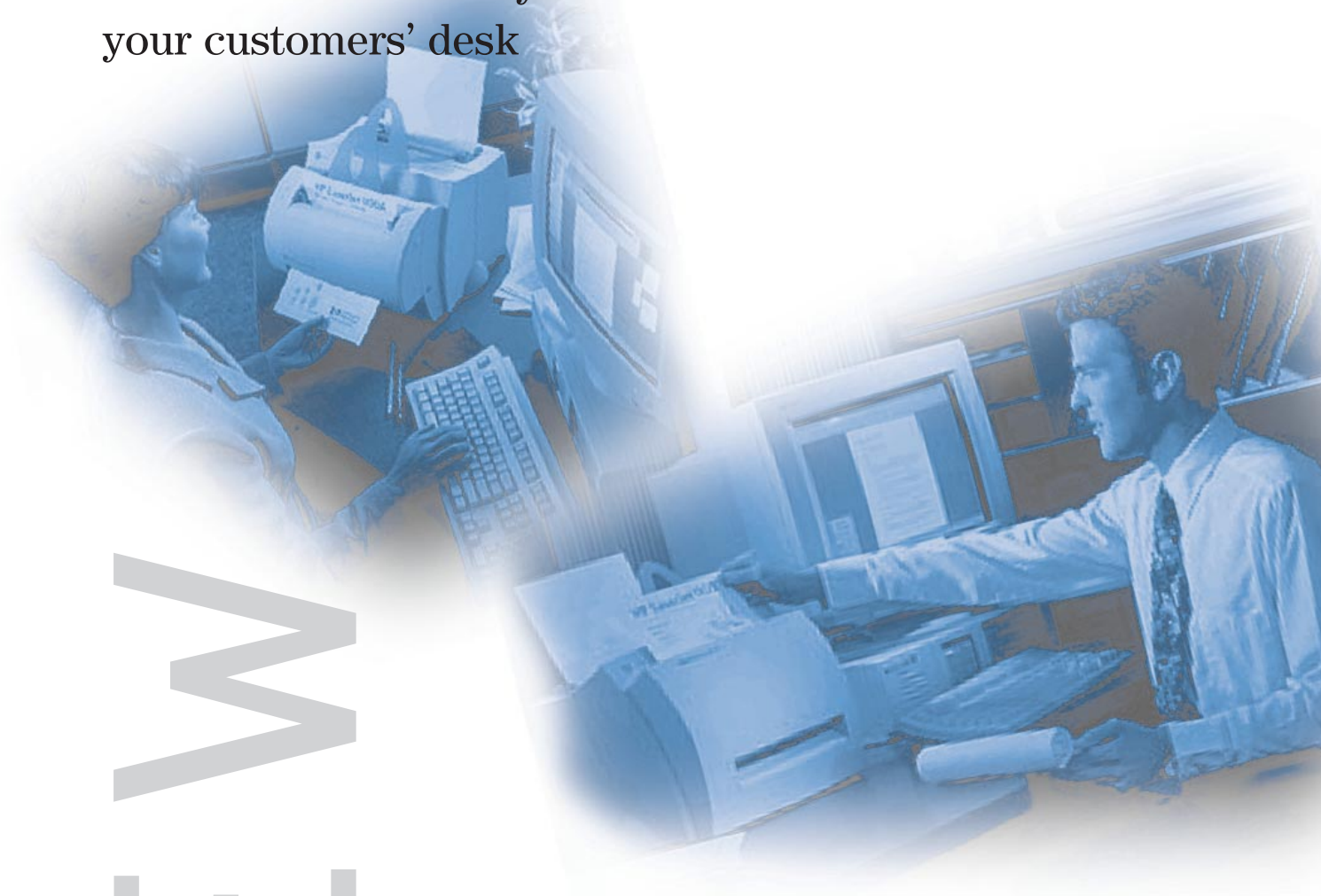


HP LaserJet 1100 Printer

HP LaserJet 1100A Printer • Copier • Scanner

HP LaserJet efficiency at
your customers' desk

NEW



HP LaserJet efficiency at your customers' desk

The personal HP LaserJet 1100 and the HP LaserJet 1100A Printer • Copier • Scanner provide your customer with high-performance print functions for all office printing needs. For even more efficiency, the HP LaserJet 1100A Printer • Copier • Scanner integrates copy and scan functions for state-of-the-art management and communication of business documents.

HP LaserJet 1100 Printer

- Quickly print professional looking documents at 8 pages per minute with true 600 dpi, HP Resolution Enhancement technology (REt) and the HP UltraPrecise™ toner cartridge
- Print the business documents you need with 2 MB standard memory (can be increased to 18 MB for complex print jobs)
- Alternative paper paths for a wide variety of print media
- Work with standard operating systems such as Windows® 3.1x, Windows® 95/98, Windows® NT 4.0, DOS
- Superior HP LaserJet quality and reliability

HP LaserJet 1100A

Printer • Copier • Scanner

All the features of the HP LaserJet 1100 **plus** more efficiency at your desktop with advanced functions

- Copy documents at the push of a button
- Scan documents for your business applications: file, retrieve, OCR, attach to e-mail, etc.
- HP desktop software for efficient document management
- All features are designed to work perfectly together and run under standard PC operating systems

NEW



NEW



1100/1100A

Targets

Target customer for the HP LaserJet 1100 Printer

- Individual business users in offices of any size (corporate, small and micro businesses, home offices). The key common thread is the desire for professional laser results: print quality, speed, volume printing.

Corporate business customer needs

- Convenience – high-quality documents right at the desk, without the need to access network printers
- Compatibility with existing office systems and applications
- Confidentiality

Small, micro and home business customer needs

- Professional quality results
- Fast results
- Dependability
- Value for money

Target customer for the HP LaserJet 1100A Printer • Copier • Scanner

- Individual business users who handle extensive amounts of documents and information during their normal work. They communicate with a variety of people via a variety of media, including hardcopy originals, copied documents and electronic messages.

Target customer needs

- Access to more document management tools at the desktop
- Flexibility in ways to communicate and share information
- Easy exchange between electronic and paper media
- Easy-to-use tools to manage extensive amounts of data

Family Overview

HP LaserJet 6P

The fast versatile laser printer for business users with growing needs



HP LaserJet 1100 Printer

The fast personal laser printer for business users



HP LaserJet 3100 Printer • Fax • Copier • Scanner

The business communications workhorse



HP LaserJet 1100A Printer • Copier • Scanner

The fast personal laser printer, copier and scanner, all-in-one



Three Minutes to Sell

Your fast personal printer: HP LaserJet 1100 Printer

Quickly print all the high-quality business documents you need

- Fast print output at 8 pages per minute
- High-quality results for high-impact documents with true 600 dpi, HP Resolution Enhancement technology (REt) and the HP UltraPrecise™ toner cartridge
- First page out in 18 seconds

Easy to set up and use, and extremely reliable

- Print the business documents you need with 2 MB standard memory
- Work with all leading operating systems such as Windows® 3.1x, Windows® 95/98, Windows® NT 4.0 and DOS
- Alternative paper paths for a wide variety of print media
- Superior HP LaserJet product quality and reliability

Additional functions for efficient document management

- Copier/scanner attachment to increase the range of desktop tools available
- Handle complex print jobs with greater efficiency by increasing printer memory to up to 18 MB
- Connect to a network with an HP JetDirect external print server



For more efficiency at your desktop, the HP LaserJet 1100A Printer • Copier • Scanner combines all the features of the HP LaserJet 1100 with additional copy and scan functions to optimise the management and communication of your business documents



Print high-quality documents fast

Your fast personal document manager:
HP LaserJet 1100A
Printer • Copier • Scanner



Copy direct

Make fast, high-quality copies at the push of a button, even with your PC switched off. For more advanced features such as multiple copies, image enhancement or contrast adjustment, use the software provided for your PC.

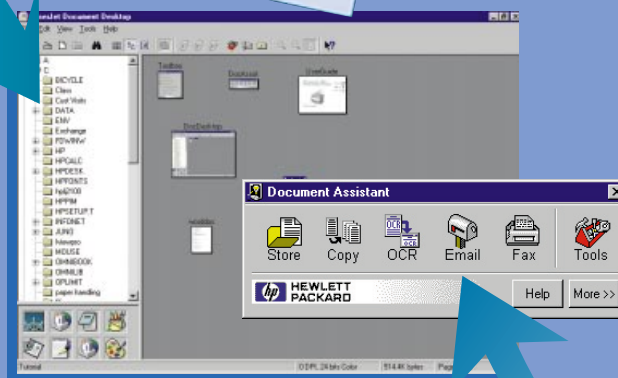


File and retrieve

The easy-to-use HP LaserJet 1100A desktop software includes an efficient filing system. The LaserJet document desktop allows users to drag "thumbnail" icons of scanned images and drop them into file folders as electronic documents. These documents can be opened, viewed, annotated or sent electronically right from the desktop.

No need for re-typing

The HP LaserJet 1100A includes the highly efficient ReadIris® OCR (optical character recognition) software for converting hardcopy documents to editable text. A document scanned to text via OCR is automatically sent to the word processor application on your PC for editing.



Distribute documents by e-mail or PC fax

For efficient business communications with workgroups or customers, the HP LaserJet 1100A allows users to convert hardcopy documents into electronic format for easy distribution via e-mail or PC fax applications. The necessary links to users' existing e-mail and PC fax applications are made automatically during software installation.

The Document Assistant* gives users quick and easy access to the document management and communications functions of the HP LaserJet 1100A. This software feature allows users to send a scanned image directly to the appropriate application for the task they wish to perform by just clicking on the icon.

* Under Windows 3.1x all functions are available via the desktop software, not via the Document Assistant



Print high-quality documents fast



Make copies in various formats at the push of a button



Create and edit documents quickly with highly efficient ReadIRIS® Optical Character Recognition (OCR) software



File and retrieve business documents at any time with the easy-to-use desktop software



Distribute documents by e-mail or PC fax

Technical Specifications

Technical Specifications

HP LaserJet 1100/HP LaserJet 1100A Printer • Copier • Scanner

Print Speed and Processor	8 ppm-rated engine speed; first page out in 18 seconds; instant-on fusing eliminates warm-up time. Microprocessor: Motorola ColdFire 5202, 35 MHz
Resolution	600 x 600 dpi plus HP's Resolution Enhancement technology (RET) and HP UltraPrecise™ Toner Cartridge
Printer Language	PCL 5e
Fonts	26 Intellifont scalable typefaces built in
Media Types	Plain paper, envelopes, transparencies, card stock, postcards and labels
Media Weights	60 to 105 g/m ² (16 to 28 lb) using paper output bin; 60 to 157 g/m ² (16 to 42 lb) using front output slot
Media Size	A4: 210 x 297 mm, Letter: 216 x 279 mm, Legal: 216 x 356 mm, and custom paper sizes Executive: 184 x 267 mm, B5: 176 x 250 mm, C5: 229 x 162 mm, DL: 220 x 110 mm, Monarch: 98 x 190 mm, Com-10: 105 x 241 mm and custom envelope sizes
Media Handling	One 125-sheet paper input bin with single-sheet priority feed slot. One 100-sheet paper output bin with alternate straight-through path for wrinkle-free envelope printing
Printer Control Panel	Simplified front panel with one operator button/LED plus two LEDs for status
Memory	2 MB standard plus HP's Memory Enhancement technology (MET). Expandable to 18 MB with industry-standard DIMM (Dual-In-Line Memory Module)
Toner	HP UltraPrecise™ toner cartridge; average 2,500 pages at 5% coverage. Economode printing uses up to 50% less toner
Estimated Usage	Up to 7,000 pages per month (Duty Cycle)

Copying & Scanning

(HP LaserJet 1100A Printer • Copier • Scanner only)

Copy Speed	8 ppm
Scanner Resolution	600 dpi enhanced (300 dpi optical) with 256 levels of grey; Text Mode, Photo Mode and Combination Mode for optimal results
Scanner Control Panel	Simple 2 button panel, one button for copying and one button for scanning to the PC
Scanner Compatibility	Twain 1.6
Scan Media Size	Minimum: 51 x 89 mm (2 x 3.5 in); Maximum: 216 x 762 mm (8.5 x 30 in)
Software	Includes drivers for printing and scanning, integrated desktop for organizing scanned documents, drag-and-drop links to key applications, self-viewing portable document creation, easy access to device configurations, and scan to copy functions, ReadIRIS® professional OCR software

System Specifications

Minimum System Requirements	Windows® 3.1x requires 486 with 4 MB RAM and 25 MB of free hard disk space Windows® 95 requires 486 with 8 MB RAM and 25* MB of free disk space Windows® 98 requires 486 with 16 MB RAM and 25* MB of free disk space Windows® NT 4.0 requires Pentium 90 with 32 MB RAM and 25* MB of free disk space HP LaserJet 1100A: CD-ROM required. ECP parallel port recommended Only printing is compatible with DOS & OS/2
Weight 1100	7.3 kg (16.1 lb)
Weight 1100 A	8.7 kg (19.2 lb)
Dimensions 1100	W x D x H 367 x 325 x 378 mm (14.5 x 12.8 x 14.9 in) with paper supports
Dimensions 1100 A	W x D x H 367 x 402 x 378 mm (14.5 x 15.8 x 14.9 in) with paper supports
Power Requirements	200/240 V AC
Power Consumption	7 W PowerSave (sleep) mode; 170 W printing, 185 W copying
Product Certifications	UL listed; CSA certified; complies with IEC 825-1/EN 60825-1 and IEC 950/EN 60950; FCC Class B certified; CISPR-22 class B; CDHR certified Class 1 Laser Product (safe for office/EDP use); Energy Star compliant, BLUE ANGEL (HP LaserJet 1100 only)
Operating and Environmental Range	Acoustics (ISO 9296). Printing: 55 dB operator position, 46 dB bystander, 6.1 Bels sound power level, Powersave mode 0 dB. Quick copy: 61 dB operator position, 53 dB bystander, 6.5 Bels sound Operating Temperature: 10 to 32.5 C (50 to 90.5 F) Relative Operating Humidity: 20% to 80% (no condensation)
Warranty	1 year

* HP LaserJet 1100A Printer • Copier • Scanner: 54 MB free hard disk space

Service and Support

Country	Phone
Austria	0660 6386
Belgium	
Dutch	02 626 8806
French	02 626 8807
Czech Republic	(+42 02) 471 7321
Denmark	39 29 4099
English (non-UK)	+44 171 512 52 02
Finland	0203 47 288
France	01 43 62 34 34
Germany	0180 52 58 143 (0.48 DM per minute)
Hungary	(+361) 461 8111
Ireland	01 662 5525
Italy	02 264 10350
Netherlands	020 606 8751
Norway	22 11 6299
Poland	(+48 22) 37 50 65
Portugal	01 441 7199
Russia	(+70 95) 923 50 01
Spain	902 321 123
Sweden	08 619 2170
Switzerland	0848 80 11 11
Turkey	90 1 224 59 25
United Kingdom	0171 512 52 02



For More Information: <http://www.hp.com>

Ordering Information:

Number	Description
Standard Unit	
C4224A	HP LaserJet 1100 Printer
C4218A	HP LaserJet 1100A Printer • Copier • Scanner
Accessories	
C4092A	HP UltraPrecise™ Toner Cartridge
C4221A	Copier/Scanner for the HP LaserJet 1100
DIMM Memory Modules	
C4135A	4 Mbyte
C4136A	8 Mbyte
C4137A	16 Mbyte
Cable/Network Interfaces	
C2945A	2 m HP LaserJet parallel cable, IEEE 1284-compliant; DB-25 to small 36-pin high-density male (c-type)
C2946A	3 m HP LaserJet parallel cable, IEEE 1284-compliant; DB-25 to small 36-pin high-density male (c-type)
TBD	10 m HP LaserJet parallel cable, IEEE 1284-compliant; DB-25 to small 36-pin high-density male (c-type)
J3258A	HP JetDirect 170X external print server, single port, 10Base-T
J3263A	HP JetDirect 300X external print server, single port, 10/100Base-TX
J3265A	HP JetDirect 500X external print server, three ports – 10/100Base-TX



Box Contents

HP LaserJet 1100 Printer

- HP LaserJet 1100 Printer
- HP UltraPrecise™ toner cartridge
- Quick reference guide
- Hardcopy user guide
- Localised software (drivers, user guide) on CD
- Driver disks
- Power cord
- IEEE 1284 parallel cable - C size
- Input and output bin paper supports
- Box Weight: 12.25 kg
- Box Dimensions: 511 x 250 x 601mm (WxHxD)

HP LaserJet 1100A Printer • Copier • Scanner

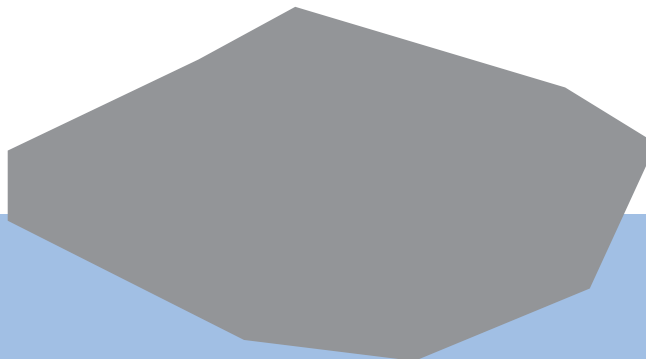
- HP LaserJet 1100A Printer • Copier • Scanner
- HP UltraPrecise™ toner cartridge
- Quick reference guide
- Localised software (drivers, user guide) on CD only
- Power cord
- IEEE 1284 parallel cable - C size
- Input and output bin paper supports
- Box Weight: 12.25 kg
- Box Dimensions: 511 x 250 x 601mm (WxHxD)

Year 2000 Compliance

Year 2000 Compliant means that if the product processes date data (including, but not limited to, calculating, comparing, and sequencing), it does so accurately from, into and between the twentieth and twenty-first centuries, including leap year calculations, when used in accordance with the product documentation provided by HP, provided that all listed or unlisted products (e.g., hardware, software, firmware) used in combination with such listed product properly exchanges date data with it.

The Hewlett-Packard Company states that the HP LaserJet 1100 Printer and HP LaserJet 1100A Printer • Copier • Scanner products and solutions including all the software, hardware, firmware, and the accessories for these products correctly process date data and meet Year 2000 Compliance.

HP LaserJet 1100 Printer and HP LaserJet 1100A Printer • Copier • Scanner products and solutions will function with all the reliability and quality that you have always associated with HP as you enter the 21st century.



HP has custom-designed the HP LaserJet 1100 Printer and HP LaserJet 1100A Printer • Copier • Scanner and their supplies to work together to optimise print quality

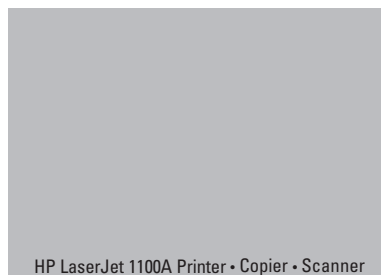
The HP Connect reseller web site

<http://www.connect.hp.com>

For more information please see the HP Connect reseller web site or contact your local HP representative for a complete range of marketing materials such as:

- Photos
- Line Art
- Logos

These tools will assist you in the development of your own advertising programmes and promotional materials for the HP LaserJet 1100 printer and the HP LaserJet 1100A Printer • Copier • Scanner



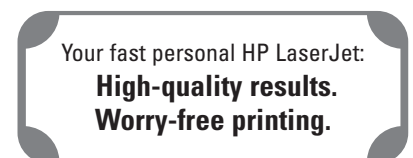
Suggested Copy

For the HP LaserJet 1100 Printer:
The new HP LaserJet 1100 printer is the ideal fast personal LaserJet printer. It offers high-speed printing at 8 pages per minute, so you get all the business documents you need very quickly. High-quality results for high-impact documents are guaranteed by true 600 dpi with HP Resolution Enhancement technology (REt) and the HP UltraPrecise™ toner cartridge. The HP LaserJet 1100 printer comes with 2 MB memory to cover all standard business printing needs. For more complex print jobs memory can even be increased to up to 18 MB. An alternative paper path allows you to print on a variety of media. The HP LaserJet 1100 printer is easy to set up and use, and extremely reliable, as are all HP LaserJets. It runs under standard PC operating systems such as Windows® 3.1x, Windows® 95/98 Windows® NT and DOS.

For the HP LaserJet 1100A Printer • Copier • Scanner:
The new HP LaserJet 1100A Printer • Copier • Scanner combines all the print functions of the HP LaserJet 1100 with additional copy and scan functions to provide an all-in-one device for efficient management and communication of documents. Make copies in various formats at the push of a button, create and edit documents quickly with the highly efficient ReadIRIS® Optical Character Recognition (OCR) software, file and retrieve business documents at any time with the easy-to-use desktop software, attach scanned documents to e-mail or PC fax. The new HP LaserJet 1100A Printer • Copier • Scanner is easy to set up and use, and extremely reliable, as are all HP LaserJets. It runs under standard PC operating systems such as Windows® 3.1x, Windows® 95/98 Windows® NT and DOS.

Bursts and Banners

For the HP LaserJet 1100 Printer:



For the HP LaserJet 1100A Printer • Copier • Scanner:



The information contained in this document is subject to change without notice

© Hewlett-Packard Company
Printed in the Netherlands 08/98

5967-5821 EN