



A KOHLER COMPANY

BATH CLASSICS™

DELUXE BY-PASS BATH DOORS

5900

ALSO 5910, 5920, 5930

Features

- Heavy-duty, anodized aluminum-framed sliding glass doors
- Out-of-plumb adjustability allows for easy installation
- Panels are guided by a unique continuous bottom track guide system
- Aluminum components extruded from alloy 6063-T5
- Reversible top track and towel bar allow a choice between a rounded or accented design
- Easy-to-clean bottom track
- Tempered glass ensures maximum safety and durability
- Stainless steel hardware prevents rusting or corrosion

Codes/Standards Applicable

Specified model meets or exceeds the following:

- ANSI Z97.1 (tempered glass)



Colors/Finishes

- S: Silver
- PB: Polished Brass
- W: White

Specified Model

Model	Application	Glass Texture	Pattern	Frame Colors/Finishes*		
5900-56*	Bath	Pebbled	None	<input type="checkbox"/> S		
5900-57*	Bath	Pebbled	None	<input type="checkbox"/> S	<input type="checkbox"/> PB	
5900-59*	Bath	Pebbled	None	<input type="checkbox"/> S	<input type="checkbox"/> PB	
5910-57*	Bath	Pebbled	None	<input type="checkbox"/> S		
5920-54*	Bath	Pebbled	None	<input type="checkbox"/> S		
5930-56*	Bath	Pebbled	None	<input type="checkbox"/> S	<input type="checkbox"/> PB	
5935-56*-G51	Bath	Moraine™	None	<input type="checkbox"/> S	<input type="checkbox"/> PB	
5935-56*-G52	Bath	Naturalist™	None	<input type="checkbox"/> S	<input type="checkbox"/> PB	
5935-56*-G18	Bath	Smooth	Leaflet™	<input type="checkbox"/> S		
5935-56*-G22	Bath	Smooth	Florescence™	<input type="checkbox"/> S		
5937-56*	Bath	Smooth	Ellipse	<input type="checkbox"/> S	<input type="checkbox"/> PB	
5940-59*	Bath	Pebbled	None	<input type="checkbox"/> S		
5962-59*	Bath	Smooth	White Stripes	<input type="checkbox"/> S	<input type="checkbox"/> PB	<input type="checkbox"/> W

* Note: Add appropriate frame color/finish code to the end of the unit model # when ordering.

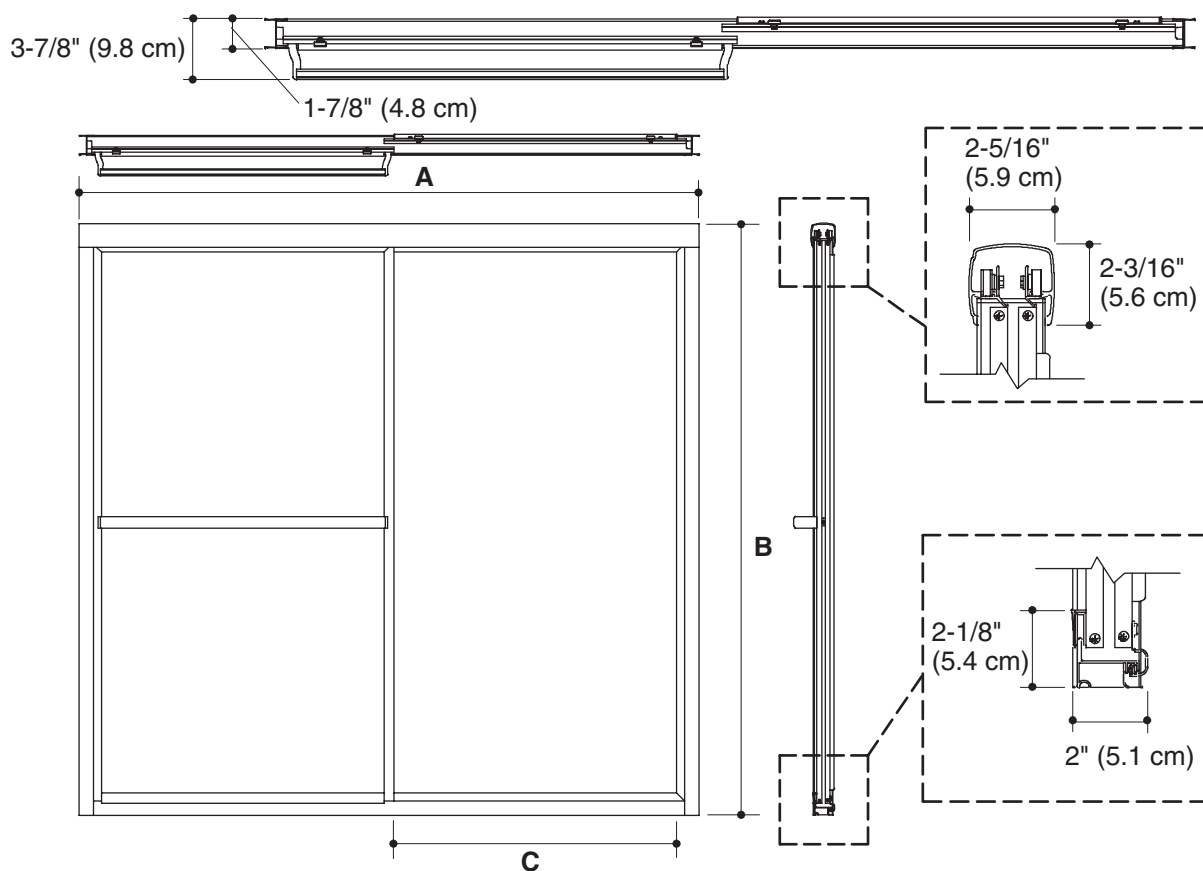
SterlingPlumbing.com

Visit us online for fixture color choices, detailed product information, color photos, installation instructions, care guides, and warranties. Sterling offers additional lines of plumbing products to complement the Sterling product you've chosen. Sign up for the Sterling monthly e-newsletter which showcases our latest product innovations. You may also call our Sterling Plumbing Answer Center from within the USA at 1-888-STERLING in addition to consulting with your local dealer. Sterling. Strong. Professional. Design.

BATH CLASSICS™

Technical Information

Model	A (Max Width)	B (Height)	C (Walk Through Max)
5900-56	56-1/4" (142.9 cm)	55-1/4" (140.3 cm)	26-1/4" (66.7 cm)
5900-57	57-3/4" (146.7 cm)	56-1/4" (142.9 cm)	26-15/16" (68.4 cm)
5900-59	59-3/8" (150.8 cm)	56-1/4" (142.9 cm)	27-3/4" (70.5 cm)
5910-57	57" (144.8 cm)	55-3/4" (141.6 cm)	26-1/4" (66.7 cm)
5920-54	54" (137.2 cm)	53-3/8" (135.6 cm)	25-1/8" (63.8 cm)
5930-56	56-1/4" (142.9 cm)	55-1/4" (140.3 cm)	26-1/4" (66.7 cm)
5935-56	56-1/4" (142.9 cm)	55-1/4" (140.3 cm)	26-1/4" (66.7 cm)
5937-56	56-1/4" (142.9 cm)	55-1/4" (140.3 cm)	26-1/4" (66.7 cm)
5940-59	59" (149.9 cm)	58" (147.3 cm)	27-3/4" (70.5 cm)
5962-59	59-3/8" (150.8 cm)	56-1/4" (142.9 cm)	27-3/4" (70.5 cm)



Product Diagram