



Perfect Image Webcam



Model 98090

Rev. 12/22/09

Contents

Introduction.....	2
System Requirements.....	2
Package Contents.....	3
PC Camera Introduction.....	3
Set up PC Camera.....	4
WebCam Companion Introduction.....	5
Software Installation	
ArcSoft WebCam Companion 3.0.....	8
ArcSoft Magic-i.....	10
Snapshot by ArcSoft WebCam Companion 3.0.....	12
Camera Specification.....	13

Introduction

Welcome to the world of digital imaging. The following information will help you to use your camera to its full capabilities.

For viewing pictures or video, camera must be connected to your personal computer.

This camera is support Microsoft Video Class and plug & play directly without driver.

System Requirements

- Pentium[®] P4 1.2G CPU
- Free USB2.0 port
- 256MB RAM internal memory minimum
- 500MB free hard disk space
- Internet connection
- CD-ROM drive
- Windows compatible sound card and speakers
- Windows[®] XP Service Pack II
- Windows Vista[™] / Windows 7

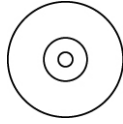
Note:

1. **If your system is Windows XP Service Pack I, please go to www.microsoft.com . It's free to update your system to Windows XP Service Pack II.**
2. **System requirement required by webcam only.**
3. **Before using WCC3, please make sure you have Media Player V.9 or above.**

Package Contents



PC camera

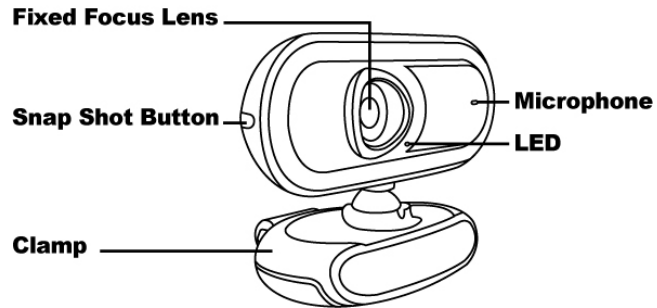


CD-disc



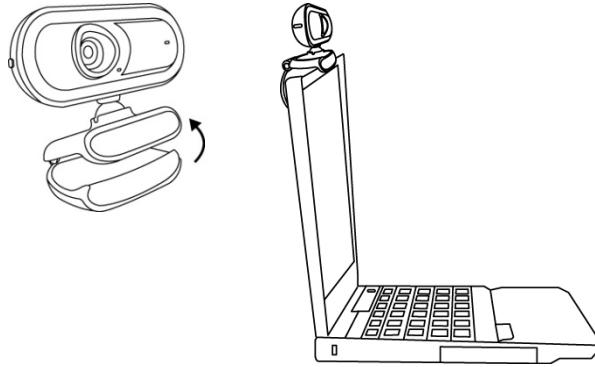
QOG

PC Camera Introduction



Set up PC camera

You may mount the PC camera to your laptop, LCD monitor or stand on the desk. Plug the PC camera into the USB port of PC or laptop properly. The best focus range is from 30cm to 100cm.



WebCam Companion 3

New ways to get creative with your webcam!

Photo and Video Capturing

You don't need a high-end digital video camera to make fun movies, and share them with friends and family.

WebCam Companion makes capturing and editing video from your webcam fast and fun. Also preview photos and videos in full screen view, add animation effects to photos, and upload to YouTube.

Smart Video Enhancement

By using ArcSoft Noise Reduction, noise on webcam video will be greatly minimized. The video quality is always poor for scenes with lighting variations such as shadows and when color shifts in illumination occurs. You can use the ArcSoft Dynamic Lighting technology to improve the quality of real time video preview.

Pose Detection

With the Fun Frame application, automatically snap

photos, adjust the pose detection sensitivity, select a variety of layouts and templates for printing, and select frame templates by category.

Masque your photos

Have fun and get creative with a morphing tool to integrate your face into another character, and then snap a photo. Preview your pictures with picture in picture, fit in view, portrait view, zoom in/out, and flip tools. Create a template by loading any pictures and then edit them with a variety of tools.

Editing Snapshots

Webcams are used primarily to stream video, but WebCam Companion lets you take snapshots with a variety of editing tools: adjust lighting with easy-to-use brightness and contrast controls, even sharpness to help compensate for movements; flip photos around to create mirror images, undo/redo changes with a single click; resize images by pixel resolution or by

percentage, and now you can even crop your photos while you edit them.

Album Managing

As time goes by, your video and image file collections may grow large and become unmanageable; finding the file you want then becomes a difficult task. WebCam Companion has a convenient album-managing function that allows you to organize your files as soon as you create them. Captured images and video clips are organized into albums so that you can quickly find the right one.

Intelligent Video Surveillance

It incorporates efficient in-house face detection and motion detection technology to detect a face or object moving in front of the webcam and can report it by alerting the user by email or FTP with captured images. It also lets you set your recording to begin as soon as an abnormal event is detected by your webcam.

Furthermore, it gives a convenient way to browse and review recorded videos by event.

Software Installation ArcSoft WebCam Companion 3.0

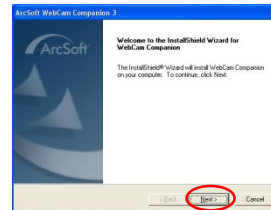
1. Turn on the computer and insert CD installation Disc into your CD-ROM drive. Select and click “ArcSoft WebCam Companion”



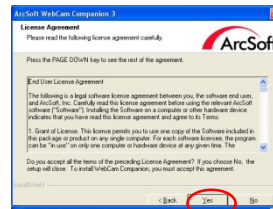
2. Choose Setup Language



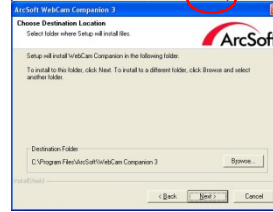
3. Click “Next”



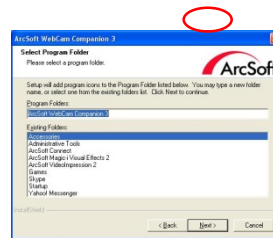
4. Click "Yes"



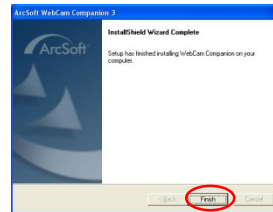
5. Click "Next"



6. Click "Next"



7. Click "Finish"



Software Installation ArcSoft Magic-i

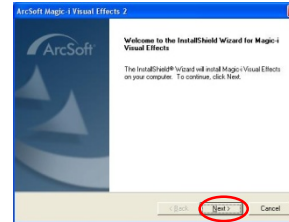
1. Turn on the computer and insert CD installation Disc into your CD-ROM drive. Select and click “ArcSoft Magic-i”



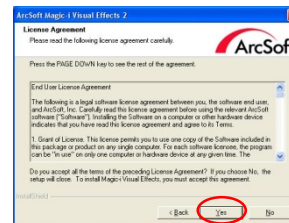
2. Choose Setup Language



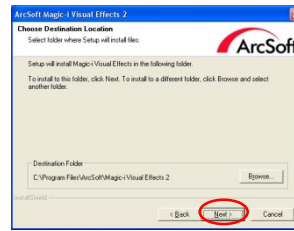
3. Click “Next”



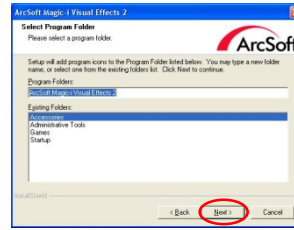
4. Click “Yes”



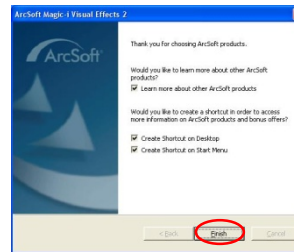
5. Click "Next"



6. Click "Next"



7. Click "Finish"



Snapshot by ArcSoft WebCam Companion 3.0

1. Click on the “WebCam Companion 3.0” icon on the desktop.



2. Click “Capture”



3. Click “Capture” for capture image and the picture is saved.



4. Click “Record Video” for recording.



Note:

The Snapshot button and its featuring functions are not supported under Windows Vista and Win7. To access this function, please use the bundled software -ArcSoft Webcam Companion 3.0

Camera Specification

Image Sensor	1280x1024 pixels, CMOS
Lens Specification	F2.8, f=4.9mm, fixed
White Balance	Auto
Exposure	Auto
Frame Rate	1280x1024 pixels @ 10~15fps 640x480 pixels @ 25~30fps
Focus Range	Fixed focus
Depth of Field	40cm to Infinity
PC Interface	USB2.0
Video Format	WMV
Audio	Built-in microphone
Video Capture Res.	1280x1024/640x480/352X288 pixels
System Requirements	Support Microsoft Video Class Win XP Service Pack II above Without driver
Snapshot	Software
Still Capture Res.	Up to 5M pixels (by WCC3 interpolation)
Power	From USB port
Bundled Software	ArcSoft WebCam Companion 3.0 ArcSoft Magic-i

Specifications are subject to change without prior notice.

Two Year Limited Warranty

Jasco Products Company warrants this product to be free from manufacturing

defects for a period of two years from the original date of consumer purchase. This warranty is limited to the repair or replacement of this product only and does not extend to consequential or incidental damage to other products that may be used with this unit. This warranty is in lieu of all other warranties express or implied. Some states do not allow limitations on how long an implied warranty lasts or permit the exclusion or limitation of incidental or consequential damages, so the above limitations may not apply to you. This warranty gives you specific rights, and you may also have other rights which vary from state to state. If unit should prove defective within the warranty period, return prepaid with dated proof of purchase to:

Jasco Products Company
10 E. Memorial Road
Oklahoma City, OK 73114

FCC Statement

Notice: Federal Communications Commission (FCC) requirements, Part 15

This equipment has been tested and found to comply with the limits for a class B digital device, pursuant to part 15 of the FCC Rules. These limits are designed to provide reasonable protection against harmful interference in a residential installation. This equipment generates, uses and can radiate radio frequency energy and, if not installed and used in accordance with the instructions, may cause harmful interference to radio communications. However, there is no guarantee that interference will not occur in a particular installation. If this equipment does cause harmful interference to radio or television reception, which can be determined by turning the equipment off and on, the user is encouraged to try to correct the interference by one or more of the following measures:

- Reorient or relocate the receiving antenna.
- Increase the separation between the equipment and receiver.

- Connect the equipment into an outlet on a circuit different from that to which the receiver is connected.
- Consult the dealer or an experienced radio/TV technician for help.

CAUTION: Any changes of modifications not expressly approved by the grantee of this device could void the users authority to operate the equipment.

This device complies with Part 15 of the FCC Rules. Operation is subject to the following two conditions: (1) this device may not cause harmful interference, and (2) this device must accept any interference received, including interference that may cause undesired operation

This symbol on the product or in the instructions means that your electrical and electronic equipment should be disposed at the end of its life separately from your household waste. There are separate collection systems for recycling in the EU. For more information, please contact the local authority or your retailer where you purchased the product.

