

---

# 2 Bay SATA NAS RAID Server

NAS-7201

Quick Installation Guide

Version 1.0

---

# Table of Contents

<b>1. OVERVIEW .....</b>	<b>3</b>
<b>2. PACKAGE CONTENTS .....</b>	<b>3</b>
<b>3. HARDWARE INSTALLATION .....</b>	<b>4</b>
<b>4. HARDWARE CONNECTION .....</b>	<b>8</b>
<b>5. BASIC CONFIGURATION .....</b>	<b>9</b>
5.1. WEB CONFIGURATION ACCESS .....	9
5.2. HDD FORMATION AND RAID SETTING .....	10
<b>FURTHER INFORMATION .....</b>	<b>10</b>

---

## 1. Overview

Thank you for purchasing NAS-7201, the 2-bay SATA RAID NAS server, this guide provides physical installation and initial HDD configuration for the this NAS RAID Server. Please read the information before your installation.

## 2. Package Contents

NAS-7201

Power adapter

Quick Installation Guide

User's Manual CD

RJ-45 cable

---

### 3. Hardware Installation

#### Step 1: Remove the Front Case

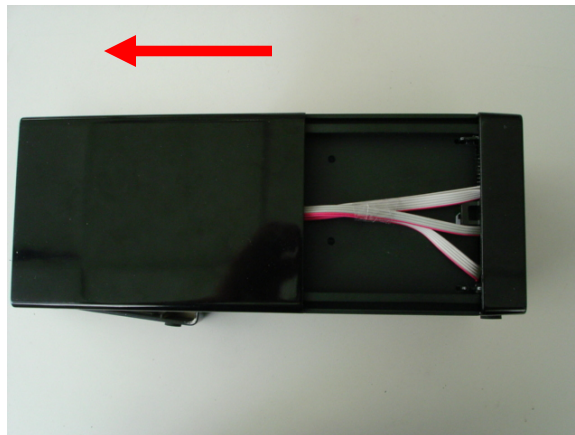
Follow the figure below to release the screws and open the front case with the direction. Slightly push the front case and lift up the plastic case.



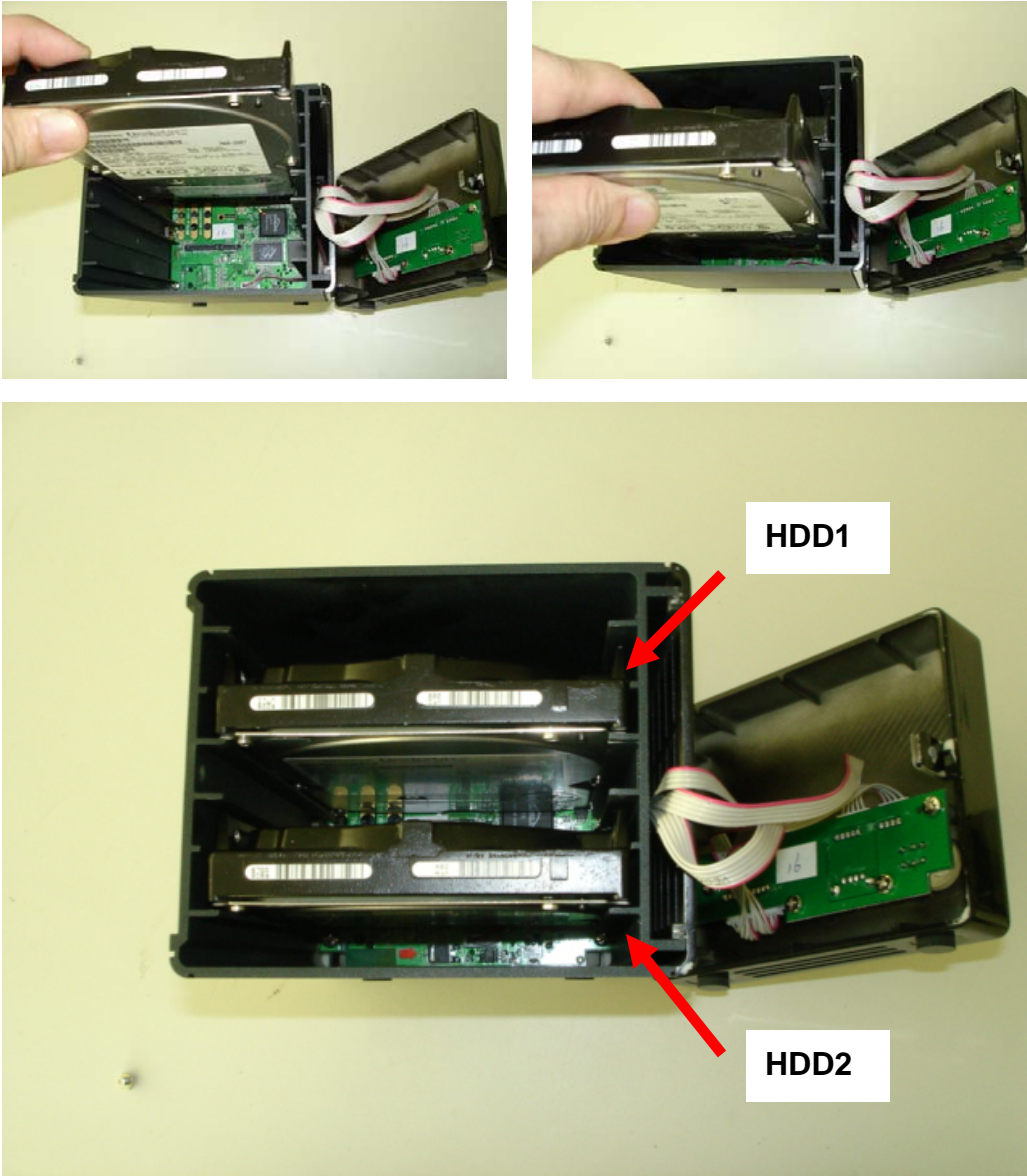
Note	When lift up the front case, please be careful for the LED wire that connect to the front panel LED
------	---

#### Step 2: Pull out the side case

Also pull out the side case to locate the HDD mounting screws. This operation is optional



**Step 3: Slide in the HDDs**



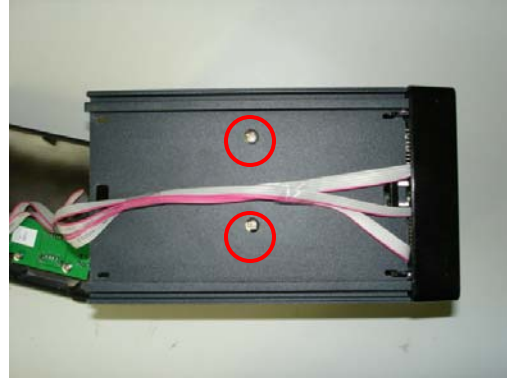
Gently slide in the SATA HDD one by one as the figure. When HDD touch the SATA connector, slightly push the HDD to make it well connected to the SATA interface of the RAID Server

<b>Caution</b>	Before slide in the HDD, please do make sure the HDD is in the correct direction. Slide in and push the HDD with violent could damage the SATA interface of the RAID Server.
----------------	--

---

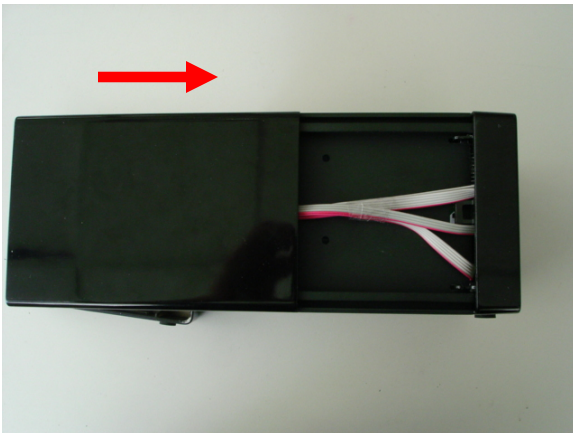
#### Step 4. Lock the HDD

To lock the HDD through two screws so that the HDD can well connected to the NAS server.



#### Step 5 Slide back the side case

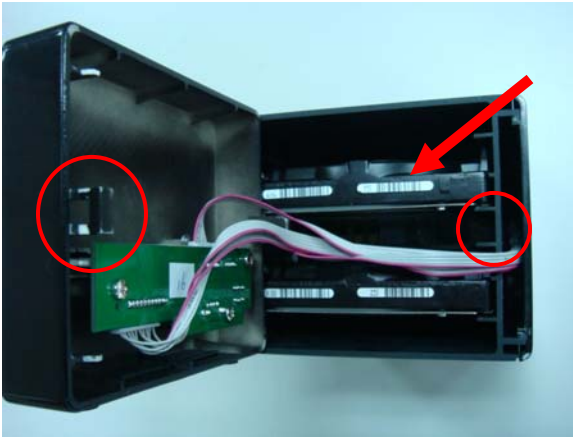
After the HDD is installed, lock the HDD with screws and slide back the case.



---

**Step 6 Lock the front case**

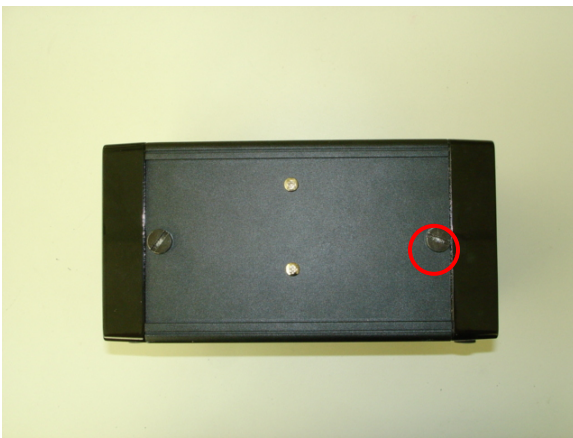
Follow the figure below to put back the front case.



Be careful for the LED wires. Please align the LED wires to the space between the two HDD and close the case gently then push with the direction

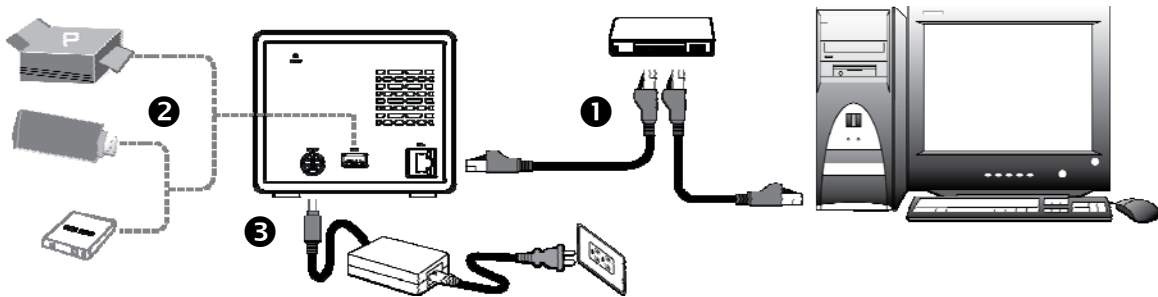


Pull the case back and follow the arrow direction to push the front case.



Lock the case with the screw.

## 4. Hardware Connection



Steps	Description
1	Connect NAS-7201 and a Switch, Hub, Router, or computer with RJ-45 Ethernet cable.
2	Connect USB printer(s) or USB storage device(s) to this device with USB cable(s). NAS-7201 can automatically mount the USB devices connected.
3	Connect the power supply to NAS-7201.
4	Press the "Power button" to turn on NAS-7201. The HDD activate LED on the front panel will light up during booting-up. NAS-7201 will be ready to use when the blue LED lights up steadily.





---

## 5. Basic Configuration

### 5.1. Web configuration access

The NAS-7201 provides GUI (Web based, Graphical User Interface) for management and administration.

The default IP address of NAS server is **192.168.0.100**. You may now open your web browser, and insert `http://192.168.0.100` in the address bar of your web browser to login web configuration page.

The NAS server will prompt for login username / password please enter: **admin / admin** to continue the NAS Server administration.



The screenshot shows the login interface for the Planet NAS-7201. The header features the Planet logo and the product name "2-Bay SATA NAS RAID Server". The main content area is mostly blank, with the login form positioned at the bottom. The form includes a "Username" label and an input field, a "Password" label and an input field, and a "Login" button.

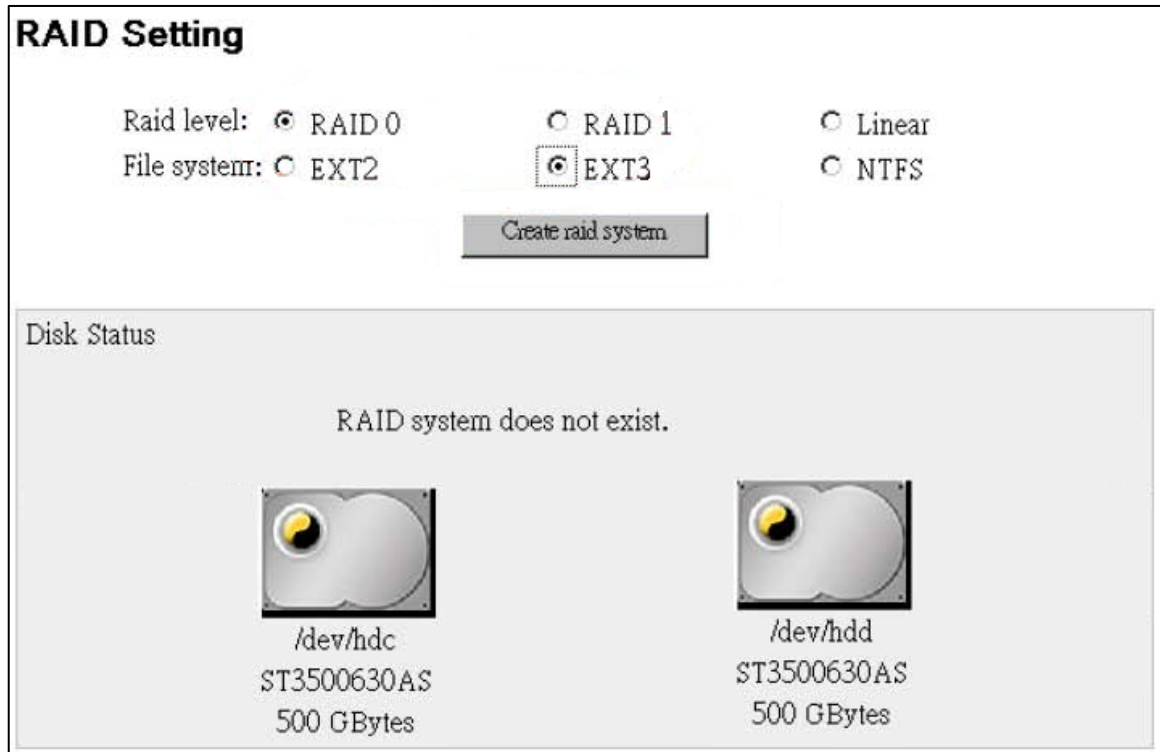
#### Note

In order to connect machine for administration, please locate your PC in the same network segment (192.168.0.x) of NAS server. If you're not familiar with TCP/IP, please refer to related chapter on user's manual CD or consult your network administrator for proper network configurations.

---

## 5.2. HDD Formation and RAID Setting

For new attached hard disk, you should format the HDD before any setting.



1. Go to 『Maintenance』 → 『RAID Setting』 to configure the server RAID level and File system.
2. Please press the **Create raid system** button to make configuration after modified whole configurations, then it will be automatically reboot.
3. After format completed, you can then start to access the storage of the RAID NAS server accordingly.

## Further Information

This guide is used to help you startup your 2 Bay NAS server settings. It is also recommended to check the user manual CD-ROM for more details of the system and user configuration.