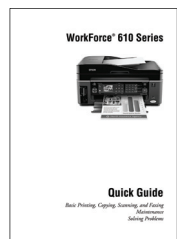
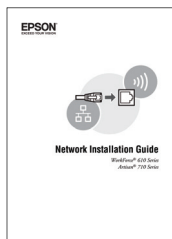
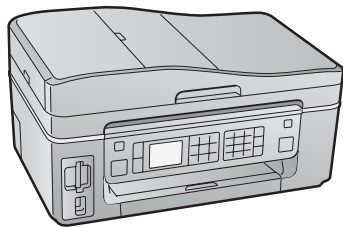
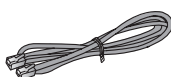


WORKFORCE® 610 Series Start Here

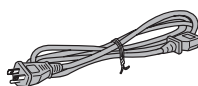
1 Unpack



(Included for
Canada only)



Phone cord



Power cord

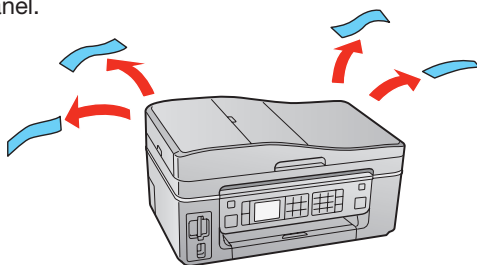
If anything is missing, contact Epson as described on the back under “Any questions?”.

Note: The model name of your product may vary slightly from the one shown above. The included CD and documentation apply to all products in the series.

Caution: Do not open ink cartridge packages until you are ready to install the ink. Cartridges are vacuum packed to maintain reliability.

Canada only: For French speakers, remove stickers from the backing sheet and place over corresponding text on the control panel.

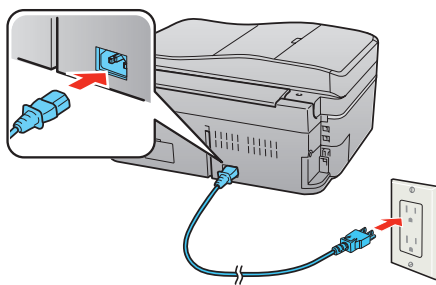
Remove all protective materials.



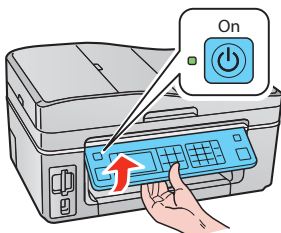
2 Turn on and adjust

- 1 Connect the power cable.

Caution: Do not connect to your computer yet.



- 2 Lift the control panel to raise it, then press the  **On** button.



Note: To lower the control panel, squeeze the release lever underneath and push the control panel down. For more information on using and adjusting the control panel, see your *Quick Guide*.



411688400

3

Make settings

1 Select your language.

Press ▲ or ▼ to select the desired option.

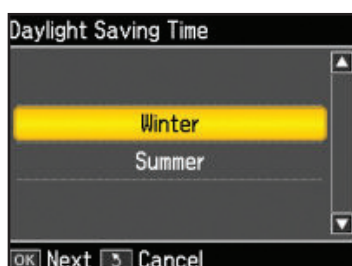


Press **OK** when done.

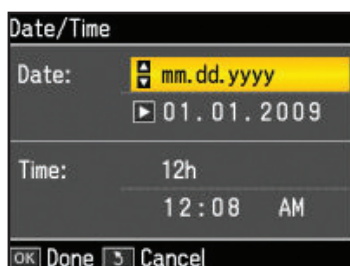


2 Select your country/region, then press **OK**.

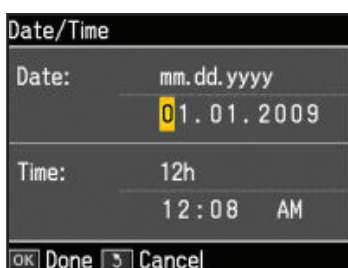
3 For the Daylight Saving Time setting, select **Summer** if your region uses Daylight Saving Time and it's currently in effect. (DST is effective from spring through summer.) Otherwise, select **Winter** to turn off the setting. Press **OK**.



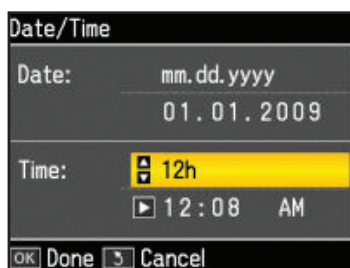
4 Press ▲ or ▼ to select the date format, then press ►. **Don't press OK yet.**



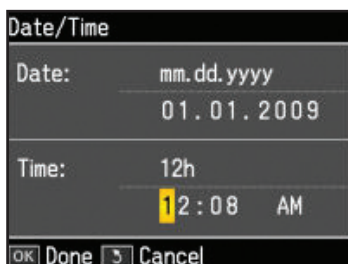
5 Use the numeric keypad to set the date. **Don't press OK yet.**



6 Press ▲ or ▼ to select the time format, then press ►. **Don't press OK yet.**



7 Use the numeric keypad to set the time.



8 If you selected **12h** as the time format, press ▲ or ▼ to select **AM** or **PM**.

9 Press **OK** when done.

Note: You can change the date and time settings by pressing the **Home** button, selecting **Setup**, selecting **Printer Setup**, then selecting **Date/Time**.

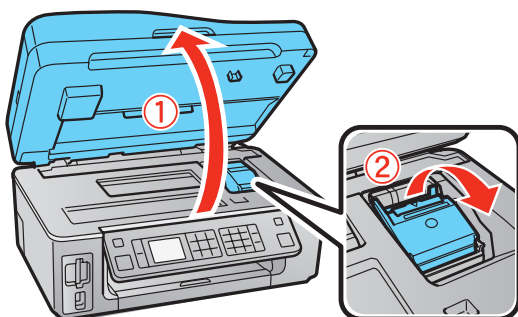
4

Install ink cartridges

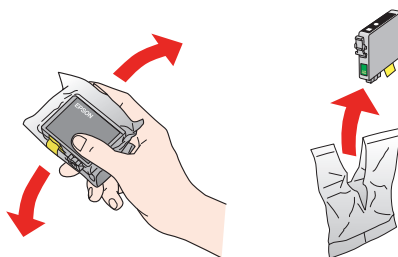
Note: Don't load paper before installing the ink cartridges.

1 Lift up the scanner.

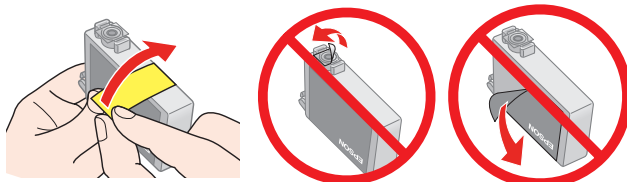
2 Open the cartridge cover.



3 Shake the ink cartridges gently 4 or 5 times, then unpack them.

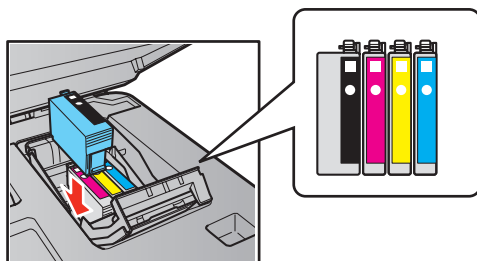


4 Remove only the yellow tape from each cartridge.

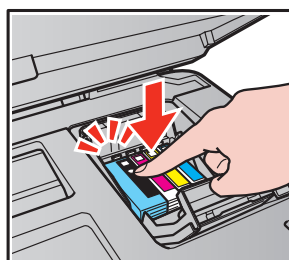


Caution: Don't remove any other seals or the cartridges may leak.

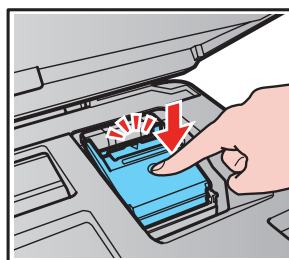
5 Insert the cartridges in the holder for each color.



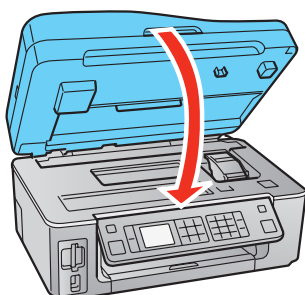
6 Press each cartridge down until it clicks.



7 Close the ink cartridge cover and press it down until it clicks.



8 Lower the scanner.



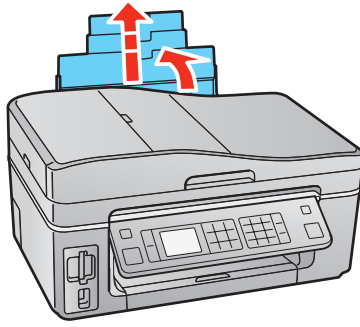
9 Press the **OK** button to charge the ink. Charging takes about 3 minutes.

Note: Your product ships with full cartridges and part of the ink from the first cartridges is used for priming the product.

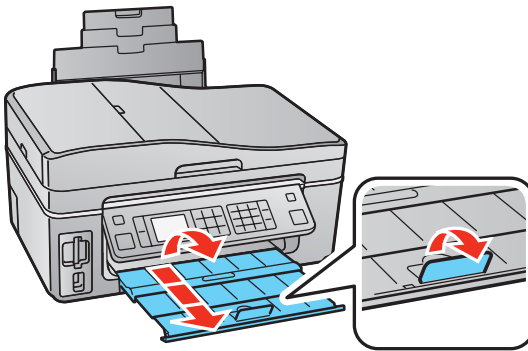
Caution: Don't turn off the product while the ink system is charging or you'll waste ink.

5 Load paper

- 1** Open the paper support and pull up the extensions.

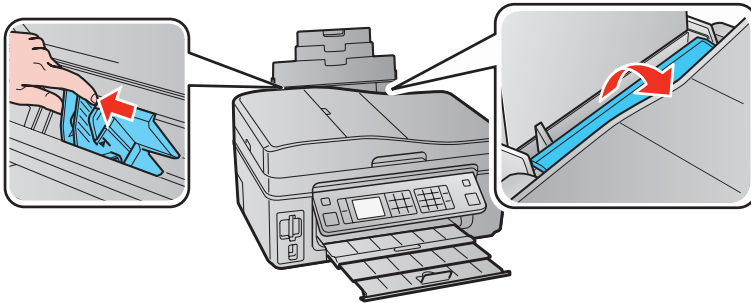


- 2** Extend the output tray and raise the stopper.

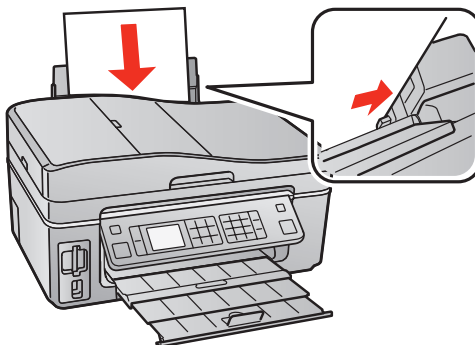


Note: If you are using legal-size paper, do not raise the stopper.

- 3** Hold the feeder guard forward, then squeeze the edge guide and slide it to the left.



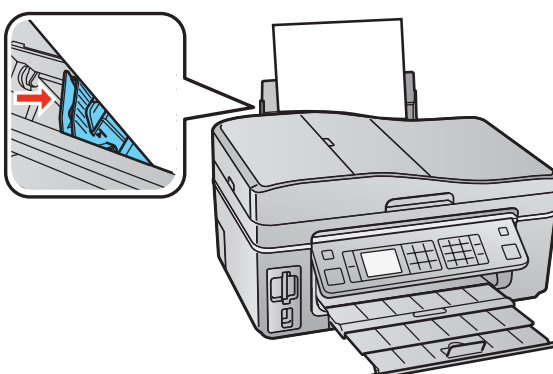
- 4** Load paper against the right edge guide and behind the tab, with the printable side face up.



Note: Don't load the paper sideways; always load it short edge first.



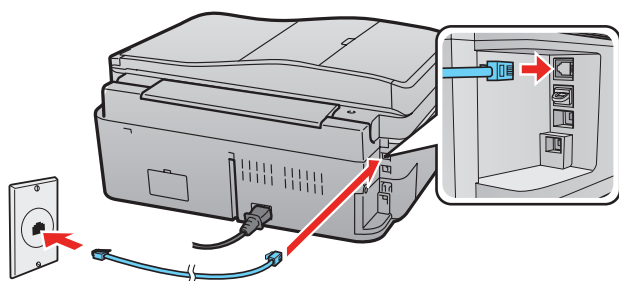
- 5** Slide the edge guide over.



6

Connect the phone cord

To use your product for faxing, connect the included phone cord from a telephone wall jack to the **LINE** port on the product. To connect a telephone or answering machine, see the *Quick Guide* for instructions.



Note: If you're connecting to a DSL phone line, you must use a DSL filter or you won't be able to fax. Contact your DSL provider for the necessary filter.

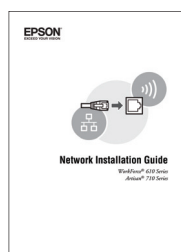
7

Choose your connection



Network (wireless or wired)

See your *Network Installation Guide*. You can't install your software as described below.



OR



USB connection

Make sure you have a USB cable (not included). Then follow the steps below.

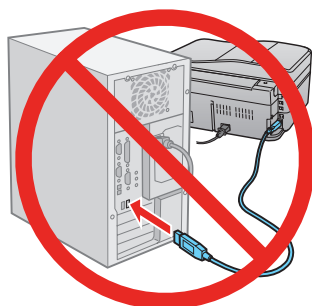


USB connection

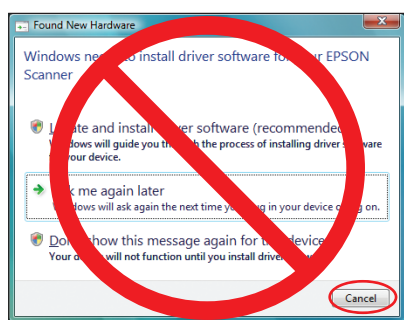
Follow these steps to connect your product directly to your computer using a USB cable (not included).

Windows

- 1 Make sure the product is **NOT CONNECTED** to your computer.

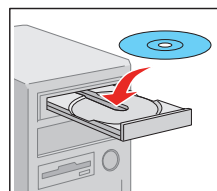


Note: If you see a Found New Hardware screen, click **Cancel** and disconnect the USB cable. You can't install your software that way.



- 2 Insert the WorkForce 610 Series software CD.

With Windows Vista®, if you see the AutoPlay window, click **Run SETUP.EXE**. When you see the User Account Control screen, click **Continue**.



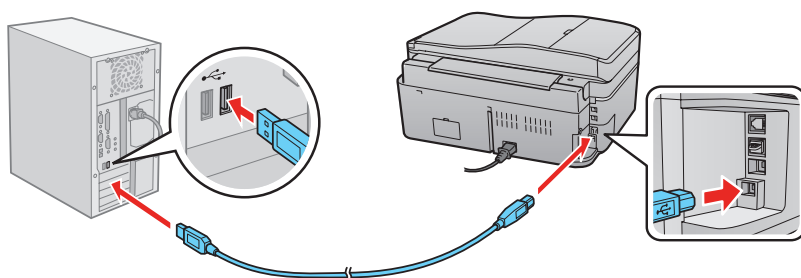
- 3 Click **Install** and follow the on-screen instructions.



- 4** When you see this screen, select **Install driver for direct USB connection** and then click **Next**.



- 5** When prompted, connect a USB cable. Use any open USB port on your computer.



Note: If installation doesn't continue after a moment, make sure you securely connected and turned on the product.

- 6** Follow the on-screen instructions to install the rest of the software and register your product.

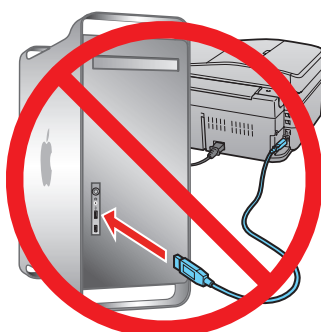
Be sure to register your product to receive these great benefits: 2-year limited warranty and 2-year toll-free customer support.*

- 7** When you're done, remove the CD.

You're ready to print, copy, scan, and fax! See your *Quick Guide* or online *Epson Information Center*.


Macintosh®

- 1** Make sure the product is **NOT CONNECTED** to your computer.



- 2** Insert the WorkForce 610 Series software CD.

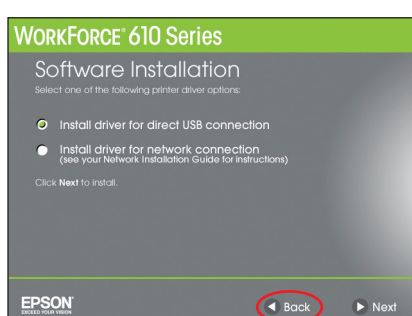


- 3** Double-click the  **Epson** icon.

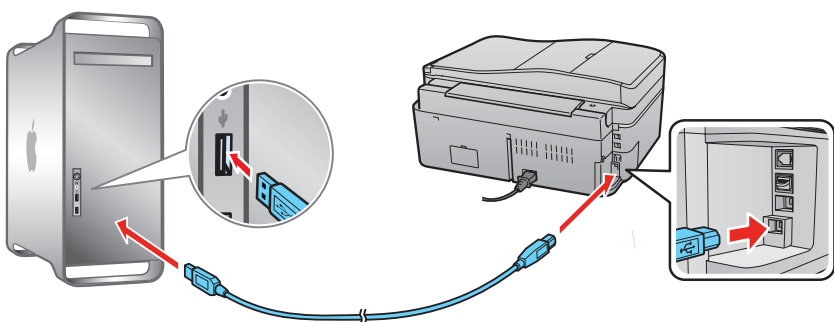
- 4** Click **Install** and follow the on-screen instructions.



- 5** When you see this screen, select **Install driver for direct USB connection** and then click **Next**.



- 6** When prompted, connect a USB cable. Use any open USB port on your computer. Make sure the product is securely connected and turned on.



Mac OS® X 10.5 users: skip to step 9. Other users: continue with step 7.

- 7** When you see this screen, click **Add Printer**. Follow the steps on the right side of the screen to add the product.

- 8** Click **Next** again, if necessary.



- 9** Follow the on-screen instructions to install the rest of the software and register your product.

Be sure to register your product to receive these great benefits: 2-year limited warranty and 2-year toll-free customer support.*

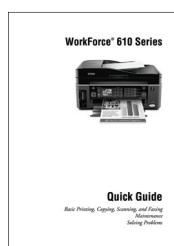
- 10** When you're done, eject the CD.

You're ready to print, copy, scan, and fax! See your *Quick Guide* or online *Epson Information Center*.

Any questions?

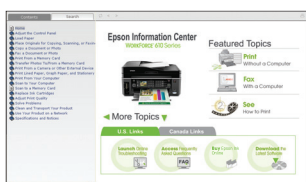
Quick Guide

Basic instructions for printing, copying, scanning, and faxing.



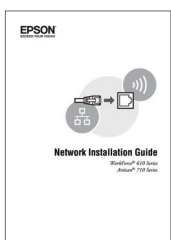
Online Epson Information Center

Click the desktop shortcut for easy access to the user's guide, FAQs, online troubleshooting advice, and software downloads. You can also purchase paper and ink.



Network Installation Guide and Video

Instructions on configuring the product for a network. For a video tutorial and other information about setting up a wireless network, go to: epson.com/support/wireless



On-screen help with your software

Select **Help** or **?** when you're using your software.

Epson Technical Support

Internet Support

Visit Epson's support website at epson.com/support and select your product for solutions to common problems. You can download drivers and documentation, get FAQs and troubleshooting advice, or e-mail Epson with your questions.

Speak to a Support Representative

Call (562) 276-4382 (U.S.) or (905) 709-3839 (Canada), 6 AM to 6 PM, Pacific Time, Monday through Friday. Days and hours of support are subject to change without notice. Toll or long distance charges may apply.

Software Technical Support

ArcSoft Print Creations™
www.arcsoft.com/support

NewSoft® Presto! PageManager®
(408) 503-1212
Fax (408) 503-1201
ContactUs@newsoftinc.com

Need paper and ink?

Try Epson paper with DURABrite® Ultra Ink for professional results. For the right supplies at the right time, you can purchase them at Epson Supplies CentralSM at **www.epson.com/ink3** (U.S. sales) or **www.epson.ca** (Canadian sales). You can also purchase supplies from an Epson authorized reseller. To find the nearest one, call 800-GO-EPSON (800-463-7766).

Genuine Epson Paper

Epson offers a wide variety of papers to meet your needs; visit Epson Supplies Central for more information.



Presentation Paper Matte
Ultra smooth, non-glare, instant-drying paper for scrapbooks, newsletters, and graphical presentations.

Genuine Epson Inks



Look for the numbers below to find your cartridges. It's as easy as remembering your number!



Color	Standard-capacity	High-capacity	Extra High-capacity
● Black	69	68	97
● Cyan	69	68	—
● Magenta	69	68	—
● Yellow	69	68	—

* 1-year limited warranty to all purchasers; 2-year toll-free support and second year warranty require registration within 60 days of purchase. For California and Québec residents, failure to submit this product registration form does not diminish your warranty rights.

Epson is a registered trademark, Epson Exceed Your Vision is a registered logomark, and Supplies Central is a service mark of Seiko Epson Corporation. DURABrite and WorkForce are registered trademarks of Epson America, Inc.

General Notice: Other product names used herein are for identification purposes only and may be trademarks of their respective owners. Epson disclaims any and all rights in those marks.

This information is subject to change without notice.

© 2009 Epson America, Inc. 4/09

CPD-27495

Cut out the card to the right and keep it with you when purchasing replacement ink cartridges.

Printed in XXXXXX

Printed in XXXXXX

WORKFORCE® 610 Series Ink Cartridges

Color	Standard-capacity	High-capacity	Extra High-capacity
● Black	69	68	97
● Cyan	69	68	—
● Magenta	69	68	—
● Yellow	69	68	—