
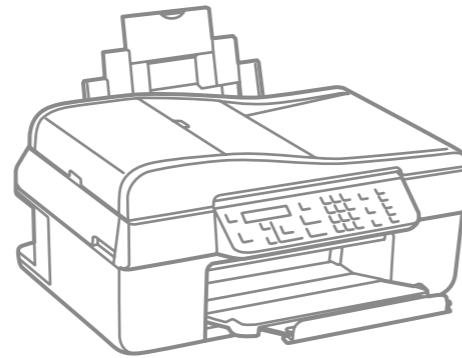


**EN** Start Here

**ID** Mulai di sini

 Warnings must be followed carefully to avoid bodily injury.  
Peringatan harus diikuti hati-hati untuk menghindari terjadinya cacat fisik.



Copyright © 2008 Seiko Epson Corporation. All rights reserved.  
Printed in XXXXXX

No. Reg: 03/DJPDN/MG/III/2001  
Tgl.13 Maret 2001

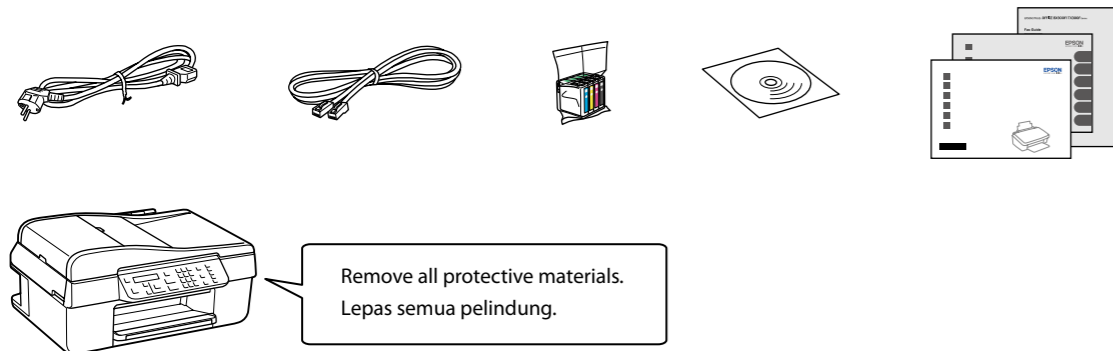


Unpacking  
Buka Kemasan

**1**

Contents may vary by location.  
Isi tergantung lokasi.

Do not open the ink cartridge package until you are ready to install it in the printer. The cartridge is vacuum packed to maintain its reliability.  
Jangan buka kemasan kartrid tinta sampai Anda siap memasangnya pada printer. Kartrid dikemas kedap udara untuk menjaga mutunya.

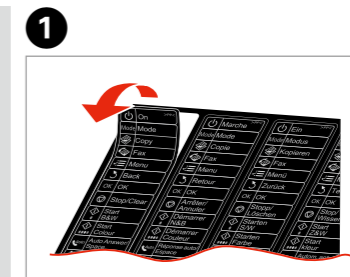


Remove all protective materials.  
Lepas semua pelindung.

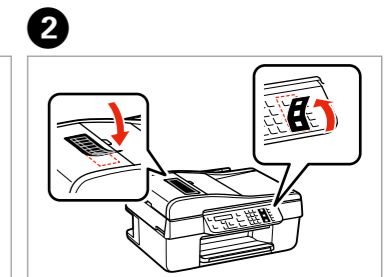
Attaching Panel Supplement Sticker  
Memasang Stiker Tambahan Panel

**2**

Depending on the location, the supplementary stickers may not be available.  
Tergantung pada lokasi, stiker tambahan mungkin tidak tersedia.



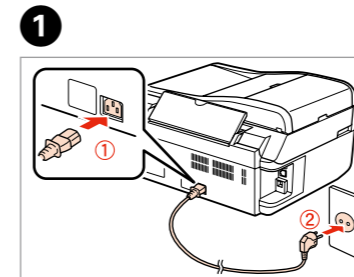
Peel off.  
Kelupas.



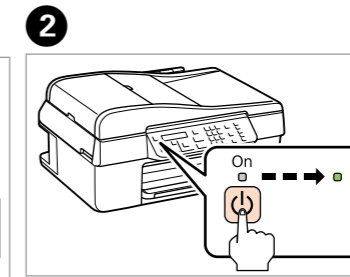
Stick.  
Tempelkan.

Turning On and Setting Up  
Menyalakan dan Menyetting

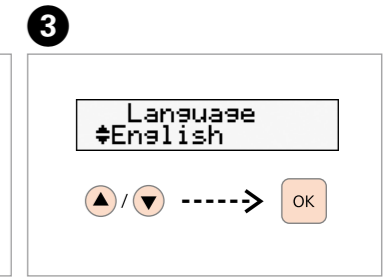
**3**



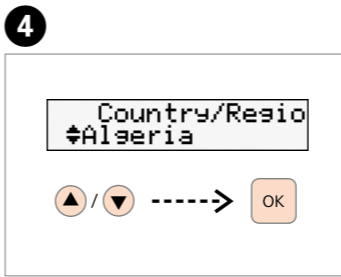
Connect and plug in.  
Hubungkan dan colokkan.



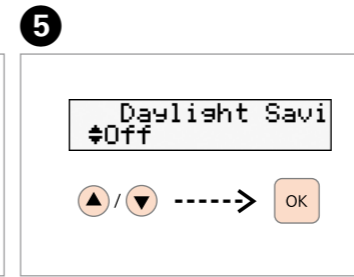
Turn on.  
Nyalakan.



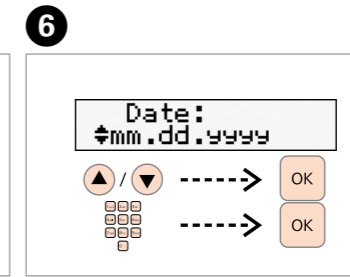
Select a language.  
Pilih bahasa.



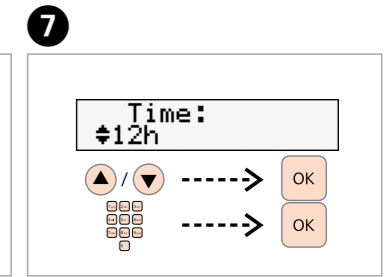
Select.  
Pilih.



Select.  
Pilih.



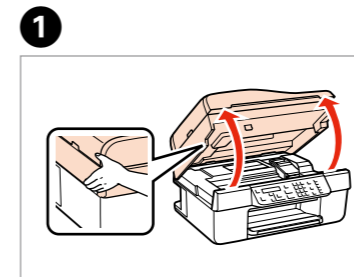
Set the date.  
Atur tanggal.



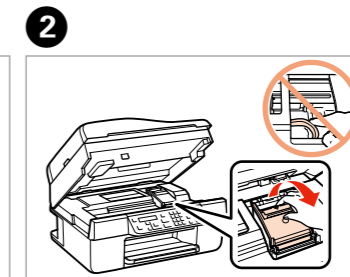
Set the time.  
Atur waktu.

Installing the Ink Cartridges  
Memasang Kartrid Tinta

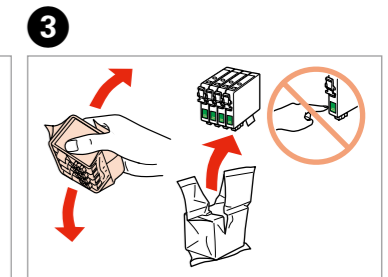
**4**



Open.  
Buka.



Open.  
Buka.



Shake and unpack.  
Kocok dan buka.

**4** Remove yellow tape. Lepas pita kuning.

**5** Install. Pasang.

Press (click). Tekan (klik).

**6** Close. Tutup.

**7** Press and wait about 2 min. Tekan dan tunggu sekitar 2 menit.

Charging ink... Complete initialization i

The ink cartridges first installed in your printer will be partly used to charge the print head. These cartridges print fewer pages compared to subsequent ink cartridges. Kartrid tinta yang pertama dipasang pada printer Anda sebagian akan digunakan untuk mengisi kepala cetak. Kartrid ini akan mencetak lebih sedikit halaman daripada cartridge tinta berikutnya.

**5** Installing the Software Menginstal Perangkat Lunak

Do not connect the USB cable until you are instructed to do so. Jangan hubungkan kabel USB sampai Anda diminta untuk melakukannya.

If this screen appears, click **Cancel**. Jika layar ini muncul, klik **Cancel (Batal)**.

**1** Insert. Masukkan.

Mac OS X Windows

Windows: No installation screen? → Windows: Tidak ada layar instalasi? →

**2** Click. Klik.

**3** Follow the instructions. Ikuti petunjuk.

**4** Connect to your PC. Hubungkan komputer Anda.

**5** Check and proceed. Periksa dan jalankan.

**6** Installation complete. Instalasi selesai.

Getting More Information Memperoleh Informasi Tambahan

Fax Guide Panduan Faksimili

Setting up and using the Fax feature Menyetting dan menggunakan fitur-fitur faksimili

Basic Operation Guide Panduan Dasar Pemakaian

Copying without a computer Menyalin tanpa komputer

Troubleshooting and maintenance Pemecahan Masalah dan pemeliharaan

User's Guide Panduan Pengguna

Printing and scanning with a computer Mencetak dan memindai dengan komputer

Troubleshooting and maintenance Pemecahan Masalah dan pemeliharaan