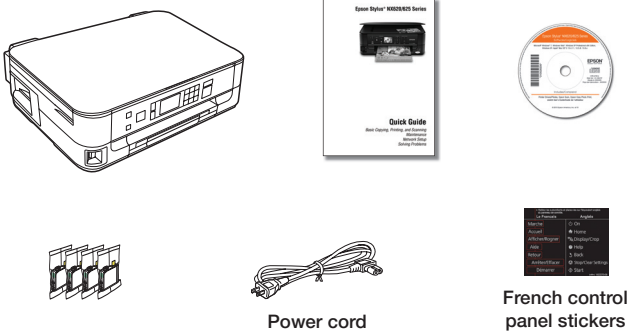


# Epson Stylus® NX620/625 Series Start Here

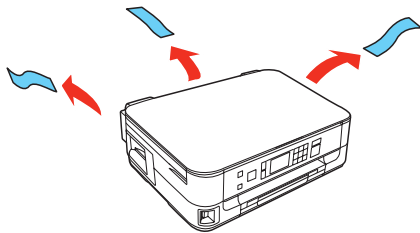
Read these instructions before using your product.

## 1 Unpack



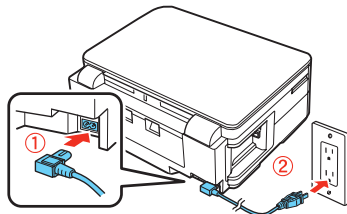
**Caution:** Do not open ink cartridge packages until you are ready to install the ink. Cartridges are vacuum packed to maintain reliability.

Remove all protective materials.



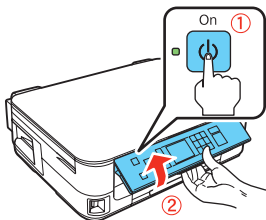
## 2 Turn on and adjust

1 Connect the power cable.



**Caution:** Do not connect to your computer yet.

2 Press the **On** button, then raise the control panel.

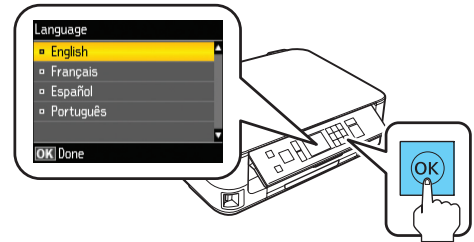


To lower the control panel, press the release bar underneath and push the control panel down.

**Caution:** To avoid damaging your Epson Stylus NX620/625 Series, always press the release bar to lower the control panel.

## 3 Select language

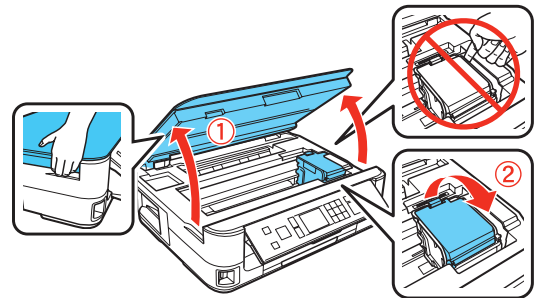
To select **English** as your language, press **OK**.



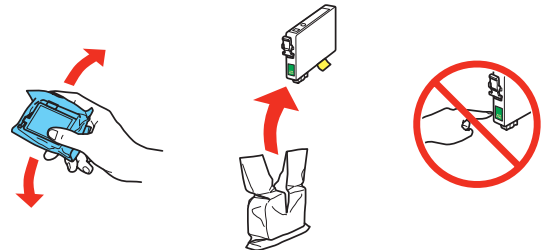
**Note:** If you want to change the language, press ▲ or ▼ to select it, then press **OK**.

## 4 Install ink cartridges

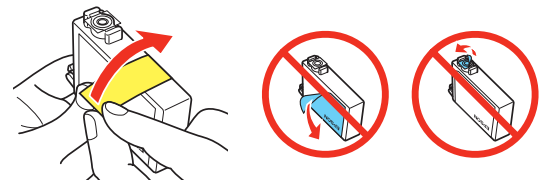
1 Lift up the scanner, then open the cartridge cover.



2 Shake the ink cartridges gently 4 or 5 times, then unpack them.



3 Remove only the yellow tape from each cartridge.



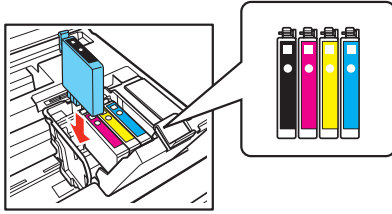
**Caution:** Don't remove any other seals or the cartridges may leak.



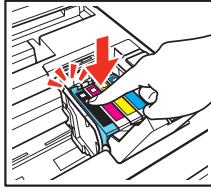
\*411835000\*

**EPSON®**  
EXCEED YOUR VISION

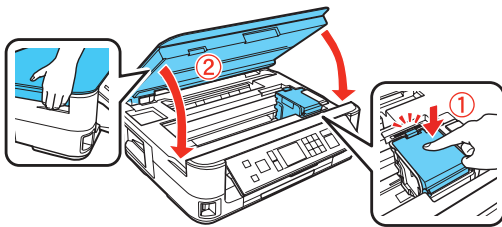
- 4 Insert the cartridges in the holder for each color.



- 5 Press each cartridge down until it clicks.



- 6 Close the cartridge cover. Press down until it clicks. Then lower the scanner.



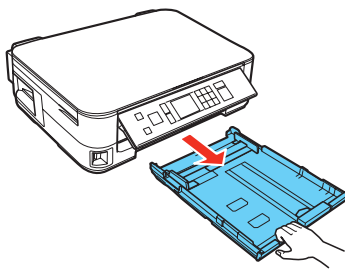
- 7 Wait while the ink delivery system primes. Priming takes about 5 minutes.

**Note:** Your printer ships with full cartridges and part of the ink from the first cartridges is used for priming the printer.

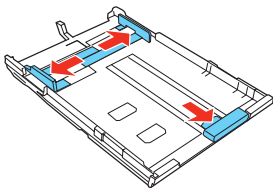
**Caution:** Don't turn off the printer while it is priming or you'll waste ink.

## 5 Load paper

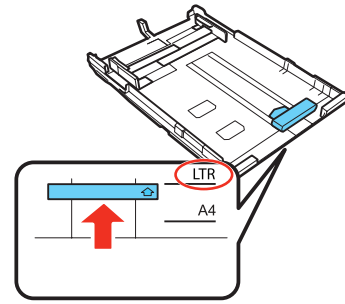
- 1 Pull out the paper cassette.



- 2 Slide the edge guides to the sides of the cassette.

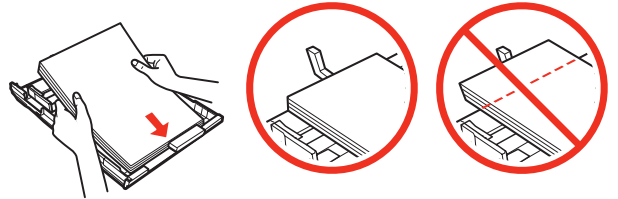


- 3 Slide the edge guide to your paper size.

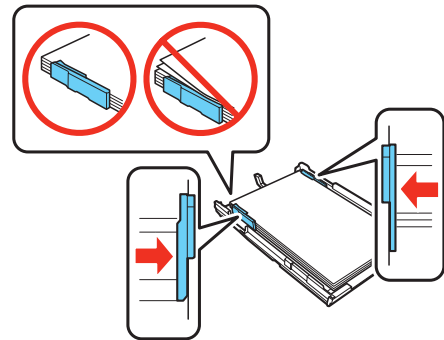


- 4 Load paper against the edge guide, with the glossy or printable side face-down.

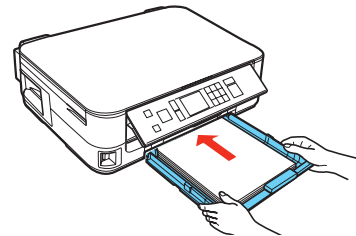
**Note:** Make sure the paper is loaded against the edge guide and not sticking out from the end of the cassette.



- 5 Slide the edge guides against the edges of the paper, but not too tightly.

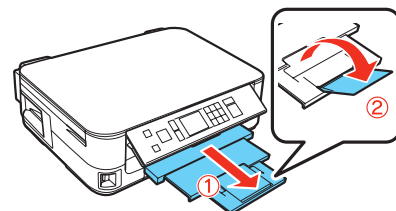


- 6 Keep the cassette flat as you insert it.



**Note:** The paper may slide forward slightly as you insert the cassette. This is normal.

- 7 Extend the output tray and flip up the paper stopper.



## 6 Choose your connection

You can connect your printer to your existing network (wireless or wired) or directly to your computer using a USB cable (not included). See below for details on each connection method.

### Wireless Connection

You must install the software on every computer from which you want to print. For the first installation, we recommend using a USB cable (not included) to simplify wireless setup. After the printer is connected to the network, you will be prompted to remove the cable.

If you're using Mac OS® X 10.6 or don't have a USB cable, you will need to use the buttons on the printer to select wireless settings.

Make sure you know your network name (SSID) and network password:

- Network name \_\_\_\_\_
- Network password \_\_\_\_\_

If you don't have this information, contact the person who set up your network.

### Direct USB Connection

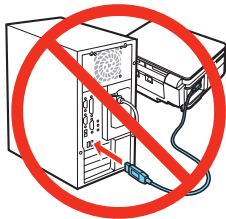
Make sure you have a USB cable (not included). Do not connect the printer to your computer until you're instructed to do so.

### Wired Ethernet® Connection

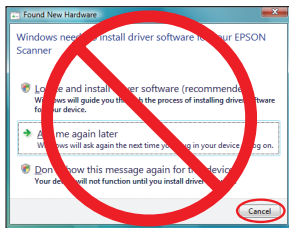
Make sure you have an Ethernet network cable (not included). You must install the software on every computer from which you want to print.

## 7 Install software

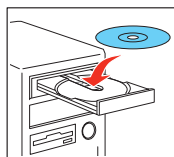
- 1 Make sure the printer is **NOT CONNECTED** to your computer.



**Windows®:** If you see a Found New Hardware screen, click **Cancel** and disconnect the USB cable. You can't install your software that way.



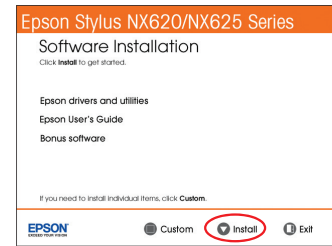
- 2 Insert the product CD.



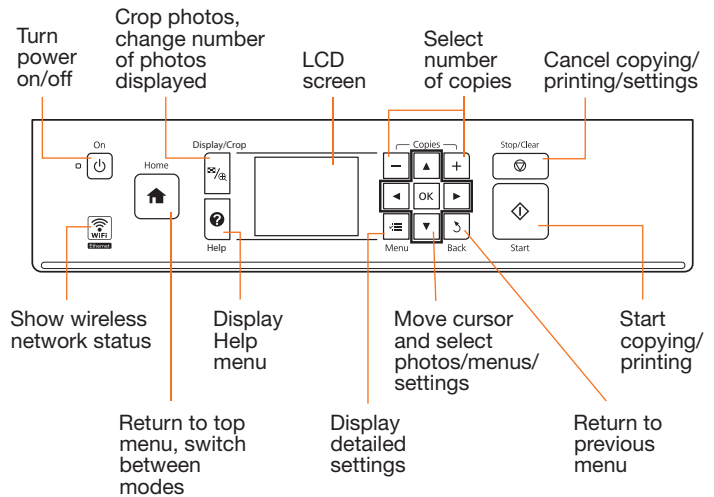
**Windows:** If you see the AutoPlay window, click **Run Setup.exe**. If you see the User Account Control screen, click **Yes** or **Continue**.

**Macintosh®:** Double-click the  **Epson** icon, if necessary.

- 3 Click **Install** and follow the on-screen instructions.



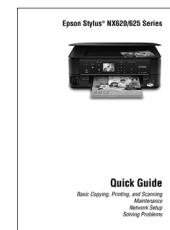
## Control panel overview



## Any questions?

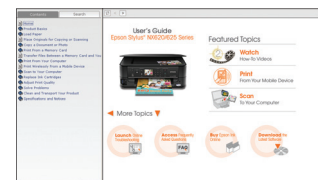
### Quick Guide

Basic instructions for copying, printing, scanning, and network setup.



### User's Guide

Click the desktop shortcut to access the online *User's Guide*, software downloads, Epson Supplies Central<sup>SM</sup>, and more (requires an Internet connection).



## On-screen help with your software

Select **Help** or **?** when you're using your software.

## Epson Technical Support

Visit [epson.com/support](http://epson.com/support) (U.S.) or [epson.ca/support](http://epson.ca/support) (Canada) where you can download drivers, view manuals, get FAQs, or e-mail Epson.

You may also speak with a support specialist by calling (562) 276-4382 (U.S.), 6 AM to 8 PM, Pacific Time, Monday through Friday, and 7 AM to 4 PM, Pacific Time, Saturday or (905) 709-3839 (Canada), 6 AM to 6 PM, Pacific Time, Monday through Friday.

Days and hours of support are subject to change without notice. Toll or long distance charges may apply.

## Any problems?

If you experience problems during setup, see below:

### Network setup was unsuccessful.

- Make sure you select the right network name.
- If you see a firewall alert message, click **Unblock** or **Allow** to let setup continue.
- If your network has security enabled, make sure you enter your network password (WEP key or WPA passphrase) correctly. If it has uppercase (**ABC**) or lowercase (**abc**) letters, make sure you enter them correctly.



Function buttons

Press ▲, ▼, ►, or ◀ on the printer to highlight a letter or function button on the screen. Press **OK** to select it.

Use the function buttons to select uppercase (**AB12**), lowercase (**ab12**), symbols (!#%@), or spaces ( ), or to delete characters (◀).

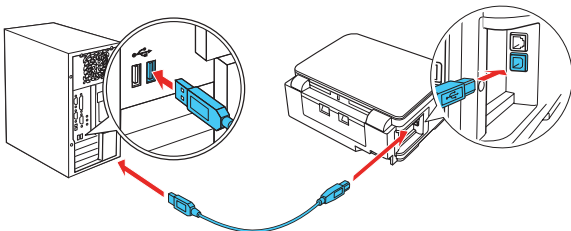
When you're finished, highlight **Done** and press **OK**.

### You see error messages on the printer's LCD screen.

See your *Quick Guide* for troubleshooting information.

### Setup is unable to find my printer after connecting it with a USB cable.

Make sure it is securely connected as shown:



## Need paper and ink?

Try Epson paper with DURABrite® Ultra Ink for professional results. For the right supplies at the right time, you can purchase them at Epson Supplies Central at [www.epson.com/ink3](http://www.epson.com/ink3) (U.S. sales) or [www.epson.ca](http://www.epson.ca) (Canadian sales). You can also purchase supplies from an Epson authorized reseller. To find the nearest one, call 800-GO-EPSON (800-463-7766).

DESIGNED *for* EXCELLENCE™

Epson printers, ink and specialty papers.

### Genuine Epson Paper

Epson offers a wide variety of papers to meet your needs; visit Epson Supplies Central for more information.



#### Premium Presentation Paper Matte

Heavy weight, non-glare card stock for school and business projects plus photos.

### Genuine Epson Inks



Look for the numbers below to find your cartridges. It's as easy as remembering your number!



### Epson Stylus NX620/625 Series Ink Cartridges

Color	Standard-capacity	Extra High-capacity
Black	125	127
Cyan	125	127
Magenta	125	127
Yellow	125	127

Epson and Epson Stylus are registered trademarks, Epson Exceed Your Vision is a registered logomark, and Supplies Central is a service mark of Seiko Epson Corporation. Designed for Excellence is a trademark and DURABrite is a registered trademark of Epson America, Inc.

General Notice: Other product names used herein are for identification purposes only and may be trademarks of their respective owners. Epson disclaims any and all rights in those marks.

This information is subject to change without notice.

© 2010 Epson America, Inc. 5/10

CPD-27815

Printed in XXXXXX