

Media

Paper name	Size	Part number
EPSON 360 dpi Ink Jet Paper	Letter	S041060
	A4 (8.3 x 11.7 inches)	S041059
EPSON High Quality Ink Jet Paper	Letter	S041111
	A4 (8.3 x 11.7 inches)	S041117
EPSON Photo Quality Ink Jet Paper	Letter	S041062
	A4 (8.3 x 11.7 inches)	S041061
	Legal	S041067
Matte Paper - Heavyweight	Letter	S041257
EPSON Photo Quality Glossy Film	Letter	S041072
	A4 (8.3 x 11.7 inches)	S041071
	A6 (4.1 x 5.8 inches)	S041107
EPSON Photo Paper	4 x 6 inches	S041134
	Letter	S041141
	A4 (8.3 x 11.7 inches)	S041140
	Panoramic (8.3 x 23 inches)	S041145
EPSON Photo Quality Glossy Paper	Letter	S041124
	A4	S041126
EPSON Photo Quality Ink Jet Cards	A6 (4.1 x 5.8 inches)	S041054
	8 x 10 inches	S041122
EPSON Photo Stickers Kit (CD-ROM/paper)	A6 (4.1 x 5.8 inches)	S041144-KIT
EPSON Photo Stickers (refill)	A6 (4.1 x 5.8 inches)	S041144
EPSON Ink Jet Transparencies	Letter	S041064
EPSON Photo Quality Self Adhesive Sheets	A4 (8.3 x 11.7 inches)	S041106
EPSON Iron-On Cool Peel Transfer Paper	Letter	S041153/ S041155

Accessories

Ink Cartridges

Cartridge	Part number
Black	S020189
Color	S020191

Options

Option	Part number
Automatic document feeder (standard with EPSON Stylus Scan Pro model)	B813142
Transparency unit	B813172

System Requirements

Windows®

- ❑ An IBM® compatible PC with at least a 486/66 MHz processor (Pentium® processor recommended)
- ❑ Microsoft® Windows 95 or 98
- ❑ At least 16 MB of RAM (32MB or more recommended)
- ❑ At least 50MB of free hard disk space (100MB recommended)
- ❑ VGA or better display adapter and monitor (24-bit color recommended)
- ❑ Double-speed (2x) CD-ROM drive for installing the software (quad-speed [4x] or faster recommended) for installing the software

Your system should also have one of the following interfaces (USB recommended):

- ❑ Windows 98 only: Available USB port or hub connection, with shielded USB “AB” interface cable, from Series A (computer) to series B (EPSON Stylus Scan), up to 6.5 feet (2 m) long*
- ❑ Windows 95 or 98: Available parallel port with a high-speed, bidirectional, IEEE-1284-compliant parallel cable (6 to 10 feet long). The cable must have a D-SUB, 25-pin, male connector for your computer and a 36-pin, Centronics® compatible connector for the Stylus Scan.**

Caution:

Using an improperly shielded USB cable—especially a cable more than 6.5 feet long—may cause the Stylus Scan to malfunction.

Notes:

- * If you’re using a USB connection, Windows 98 must be reinstalled on your system—not an upgrade from Windows 95.
- * If you’re using a USB hub, use only a first tier hub (the hub closest to the host computer).
- ** The EPSON Stylus Scan must be connected to a built-in parallel port (LPT 1 only). It cannot be used with a switch box or pass-through port (for example, on a Zip drive).

Macintosh®

- ❑ iMac® series or other Macintosh computer with built-in USB port
- ❑ Mac OS 8.1 or later (OS 8.5 or later recommended)
- ❑ At least 32MB of available memory (64MB recommended)
- ❑ At least 50MB of free hard drive space (100MB recommended)
- ❑ VGA or better monitor (24-bit color recommended)

- ❑ Double-speed (2x) CD-ROM (quad-speed [4x] or faster recommended) for installing the software
- ❑ Available USB port or hub connection, with shielded USB “AB” interface cable, from Series A (computer) to Series B (EPSON Stylus Scan), up to 6.5 feet (2 m) long

Note:

If your iMac is running Mac OS 8.1, you need to install the iMac Update 1.0 before installing the EPSON Stylus Scan software. If your iMac is running Mac OS 8.5 or 8.51, Apple recommends that you install iMac Update 1.1.

These updates are available online from Apple at <http://swupdates.info.apple.com>. Contact Apple if you have problems installing them.

Specifications

Mechanical

Paper feed method	Friction
Paper path	Sheet feeder, rear entry
Sheet feeder capacity	About 100 sheets at 17 lb (64 g/m ²) paper
Dimensions	Storage Width: 20.4 inches (517 mm) Depth: 20.8 inches (529 mm) Height: 11.8 inches (300 mm)
	Printing Width: 20.4 inches (517 mm) Depth: 22.6 inches (575 mm) Height: 11.8 inches (300 mm)
Weight	26.5 lb (12 kg) without the ink cartridges

Printing

Printing method	On-demand ink jet
Nozzle configuration	Monochrome (black) 144 nozzles Color (cyan, magenta, yellow) 144 nozzles (48 [each color] × 3)
Resolution	Maximum 1440 dpi × 720 dpi
Print direction	Bidirectional with logic seeking
Control code	ESC/P raster EPSON Remote
Input buffer	64 KB

Paper

Paper type	Size	Paper types	Thickness	Weight
Single sheets	Letter (8.5 × 11 inches) Legal (8.5 × 14 inches) Half letter (statement, 5.5 × 8.5 inches) Executive (7.5 × 10 inches) A4 (210 × 297 mm) A5 (148 × 210 mm) B5 (182 × 257 mm)	Plain bond paper, special papers distributed by EPSON	0.003 to 0.004 inch (0.08 to 0.11 mm) for plain bond paper	17 to 24 lb (64 to 90 g/m ²)
Transparencies, Glossy film	Letter (8.5 × 11 inches) A4 (210 × 297 mm) A6 (105 × 148 mm), glossy film only	Special papers distributed by EPSON	—	—
Self-adhesive sheets	A4 (210 × 297 mm)	Special papers distributed by EPSON	—	—
Envelopes	No. 10, 9.5 × 4.1 inches (240 × 104 mm) DL, 8.7 × 4.3 inches (220 × 110 mm) C6, 4.4 × 6.4 inches (114 × 162 mm) 132 × 220 mm	Plain bond paper or air mail paper	0.006 to 0.02 inch (0.16 to 0.52 mm)	12 to 20 lb (45 to 75 g/m ²)
Index cards	A6 (105 × 148 mm) 5 × 8 inches (127 × 203 mm) 10 × 8 inches (254 × 203 mm)	Special papers distributed by EPSON	—	—
Photo paper	Letter (8.5 × 11 inches) A4 (210 × 297 mm) 4 × 6 inches (102 × 152 mm) Panoramic (210 × 594 mm) 100 × 150 mm 200 × 300 mm	Special papers distributed by EPSON	—	—
Photo stickers	A6 (105 × 148 mm) with 4 or 16 frames	Special papers distributed by EPSON	—	—
Matte paper - Heavyweight	A4 (210 × 297 mm)	Special papers distributed by EPSON	—	—

Note:

Since the quality of any particular brand or type of paper may be changed by the manufacturer at any time, EPSON cannot attest to the quality of any non-EPSON brand or type of paper. Always test samples of paper stock before purchasing large quantities or printing large jobs.

Poor quality paper may reduce print quality and cause paper jams and other problems. If you encounter problems, switch to a higher grade of paper.

Do not load curled or folded paper.

Use paper under normal conditions:

Temperature: 59 to 77 °F (15 to 25 °C)

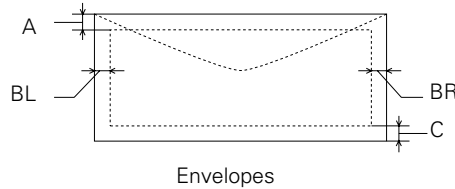
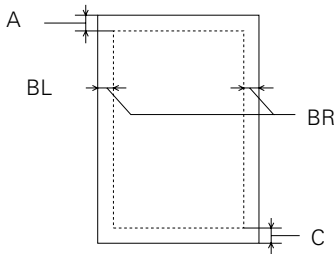
Humidity: 40 to 60% RH

EPSON Photo Quality Glossy Film and Self Adhesive Sheets should be stored under the following conditions:

Temperature: 59 to 86 °F (15 to 30 °C)

Humidity: 20 to 60% RH

Printable Area



Single sheets (including panoramic size) and index cards

- A The minimum top margin is 0.12 inch (3.0 mm). When printing multiple sheets of EPSON Photo Quality Glossy Film, the minimum top margin is 1.2 inches (30 mm).
- BL The minimum left margin is 0.12 inch (3.0 mm).
- BR The minimum right margin is:
 1.10 inches (28 mm) for #10 envelopes
 0.28 inch (7.0 mm) for DL envelopes
 0.12 inch (3.0 mm) for all other paper sizes.
- C The minimum bottom margin is 0.55 inch (14.0 mm).
 You can extend the minimum bottom margin to 0.12 inch (3.0 mm) by selecting Maximum as the Printable Area setting on the printer driver's Paper menu (for Windows) or Page Setup dialog box (for Macintosh). Please note that print quality may decline in the expanded area. Before printing large jobs using this setting, print a single sheet to confirm printout quality.

Note:

Always load paper into the sheet feeder short edge first. Load envelopes flap edge first with the flap side down.

Ink Cartridges

Specification	Black ink cartridge (S020189)	Color ink cartridge (S020191)
Color(s)	Black	Cyan, magenta, and yellow
Print capacity*	900 pages (A4, text at 360 dpi)	300 pages (A4, 360 dpi, 5% duty each color)
Cartridge life	2 years from production date (within 6 months after opening package, at 77 °F (25 °C))	
Storage temperature	-4 to 104 °F (-20 to 40 °C) 1 month at 104 °F (40 °C)	
Transit temperature	-22 to 140 °F (-30 to 60 °C) 1 month at 104 °F (40 °C) 120 hours at 140 °F (60 °C)	
Freezing temperature**	3.2 °F (-16 °C)	-0.4 °F (-18 °C)
Dimensions	1.09 (W) × 2.1 (D) × 1.5 (H) inches 27.8 (W) × 52.7 (D) × 38.5 (H) mm	1.7 (W) × 2.1 (D) × 1.5 (H) inches 42.9 (W) × 52.7 (D) × 38.5 (H) mm

* The figure given is based upon continuous printing after ink replacement. The actual print capacity may vary, depending on how often you use the print head cleaning function and how often you turn the printer on.

** The ink thaws and is usable after approximately 3 hours at 77 °F (25 °C).

Caution:

To ensure good results, use genuine EPSON cartridges and do not refill them. Other products may cause damage to your printer not covered by EPSON's warranty.

Do not use an ink cartridge after the expiration date on the package.

Scanning

- Scanner type: Flatbed color image scanner
- Photoelectric device: Color CCD line sensor
- Effective pixels: 5100 × 7020 pixels at 600 dpi, 100%
- Document size: 8.5 × 11.7 inches (216 × 297 mm) A4 or US letter size (The reading area can be specified from your software.)
- Scanning resolution: 600 dpi (main)
2400 dpi (sub)
- Output resolution: 50 dpi to 9600 dpi (50 to 4800 dpi in 1 dpi increments, 7200 dpi and 9600 dpi performed with zoom function)
- Color separation: RGB color filters on CCD
- Zoom: 50 to 200% in 1% increments
- Image data: 12 bits per pixel per color internal
8 bits per pixel per color external
- Brightness: 7 levels

Line Art settings: Fixed threshold
Text Enhancement Technology
(enable/disable selectable)

Halftoning process: AAS (Auto Area Segmentation)
Error Diffusion 3 mode (A, B, C)
Dither (Resident) 4 mode (A, B, C, D)
Dither (User defined) 2 mode (A, B)

Gamma correction: CRT display 2 level
Printer 3 level (A, B, C)
User defined 1 level

Color correction: 1 type for CRT display
Impact-Dot Printer
Thermal Printer
Ink-jet Printer
1 type for user-defined

Interface: USB + IEEE1284.4

Light source: White cold cathode fluorescent lamp

Reliability: 30,000 cycles of carriage movements
(main unit MCBF)
Lamp: Life 10,000 hours

Electrical

Specification	100–120 V model	220–240 V model
Input voltage range	99 to 132 V	198 to 264 V
Rated frequency range	50 to 60 Hz	
Input frequency range	49.5 to 60.5 Hz	
Rated current	0.7 A	0.4 A
Power consumption	Approx. 32 W (ISO 10561 Letter Pattern)	

Environmental

Temperature Operation: 50 to 95 °F (10 to 35 °C)
Storage*: –4 to 104 °F (–20 to 40 °C)
1 month at 104 °F (40 °C)
Transit*: –4 to 140 °F (–20 to 60 °C)
120 hours at 140 °F (60 °C)

Humidity Operation: 20 to 80% RH
Storage*: 5 to 85% RH (without condensation)

* Stored in shipping container

Safety Approvals

Safety standards UL 1950 with D3, CSA 22.2 No. 950

EMC FCC part 15 subpart B class B

Interfaces

USB interface

Specification	Description
Standard	Based on Universal Serial Bus Specifications Revision 1.0, Universal Serial Bus Device Class Definition for Printing Devices Version 1.0
Bit rate	12 Mbps (full speed device)
Data encoding	NRZI
Adaptable connector	USB Series B
Recommended cable length	6.5 feet (2 meters)

Parallel interface

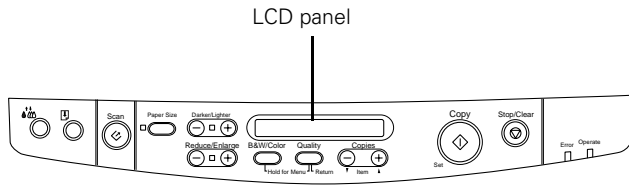
Forward channel

Specification	Description
Data format	8-bit parallel, IEEE-1284 compatibility mode, IEEE-1284 ECP mode
Synchronization	STROBE pulse
Handshake timing	BUSY and ACKNLG signals
Signal level	TTL compatible
Connector	57-30360 Amphenol connector or equivalent

Reverse channel

Specification	Description
Transmission mode	IEEE-1284 Nibble mode, IEEE-1284 ECP mode
Adaptable connector	57-30360 Amphenol connector or equivalent
Synchronization	Refer to the IEEE-1284 specification
Handshaking	Refer to the IEEE-1284 specification
Signal level	IEEE-1284 Level 1 device
Data transmission timing	Refer to the IEEE-1284 specification

Control Panel



The LCD panel displays the current copy settings. When you first turn on the EPSON Stylus Scan, you see these default settings: 100% B&W Normal 1. This means you're set to produce one black and white copy, of the same size as the original document, at Normal quality (360 dpi resolution for everyday copying).

Accessing Menu Mode

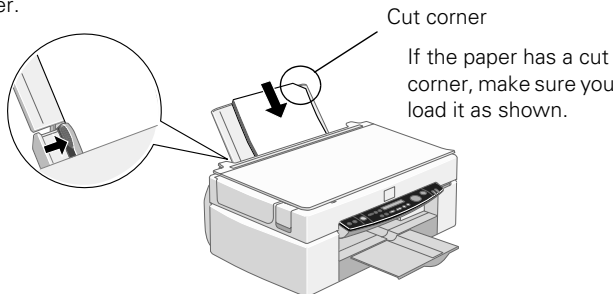
You can use the control panel's Menu Mode to print a status sheet, set the bottom margin, change from U.S. to metric paper sizes, set the language on the LCD panel, or reset the control panel to the factory defaults.

- ❑ To access Menu Mode, hold down the **B&W/Color** and **Quality** buttons until **Menu Mode** appears in the LCD panel.
- ❑ To exit Menu Mode, hold down the **B&W/Color** and **Quality** buttons until the LCD panel displays the copy mode settings.

Loading Paper

To load paper, slide out the left edge guide and place the stack of paper against the right side of the sheet feeder. Then slide the left edge guide against the paper.

Slide the left edge guide against the paper.



Testing the Printer

You can run a printer check to determine whether the problem comes from the EPSON Stylus Scan or your computer.

1. Make sure both the EPSON Stylus Scan and your computer are turned off.
2. Disconnect the interface cable from the EPSON Stylus Scan.
3. Make sure paper is loaded.
4. Hold down the load/eject button, then press and release the Operate button. Continue holding down the load/eject button until the **Operate** light starts to flash, then release it.

A check page is printed, showing the ROM version number, ink counter, and a nozzle check pattern.

5. After the page is printed, turn off the power. Then reconnect the interface cable and turn on your EPSON Stylus Scan and computer.
 - ❑ If the results are satisfactory, the problem lies in your software settings, the interface cable, or your computer.
 - ❑ If the check page does not print correctly, you may have a problem with your EPSON Stylus Scan.

Using Special Media

Selecting Special Media

When you print on special media, you need to choose the correct Media Type and Paper Size settings in your printer software. The table below lists the available EPSON media and the corresponding Media Type setting for each one.

Media name	Media Type setting
Plain paper sheets or envelopes	Plain paper
EPSON 360 dpi Ink Jet Paper EPSON Iron-On Cool Peel Transfer Paper	360 dpi Ink Jet Paper
EPSON High Quality Ink Jet Paper EPSON Photo Quality Ink Jet Paper EPSON Photo Quality Ink Jet Cards EPSON Photo Quality Self Adhesive Sheets	Photo Quality Ink Jet Paper
EPSON Photo Paper EPSON Photo Quality Glossy Paper	Photo Paper
EPSON Photo Quality Glossy Film EPSON Photo Stickers	Photo Quality Glossy Film
EPSON Ink Jet Transparencies	Ink Jet Transparencies
EPSON Matte Paper-Heavyweight	Matte Paper-Heavyweight

Paper Loading and Handling Guidelines

The following tips help you get the best results:

- ❑ Always load the printable side (the whiter and brighter side) face up. Some special papers come with a cut corner to help you load them correctly.
- ❑ Load letterhead or preprinted paper so the top of the paper feeds into the printer first.
- ❑ Don't load paper above the arrow on the left edge guide.
- ❑ You can load up to 20 sheets of Photo Paper, 30 transparencies, and 30 Photo Quality Ink Jet Cards. For Photo Quality Ink Jet Paper, you can load up to the arrow mark on the left edge guide.
- ❑ Use a support sheet if you find it in the paper package.
- ❑ Return unused paper to the original package as soon as you finish printing.

Replacing an Ink Cartridge

When you're low on ink or one of the cartridges is empty, you'll see a message on the LCD status display panel. It's a good idea to keep new cartridges on hand, since you can't print if either ink cartridge is empty.

Caution:

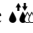
To ensure good results, use genuine EPSON cartridges and do not refill them. Other products may cause damage to your printer not covered by EPSON's warranty.

Use these EPSON ink cartridges within six months of installing them and before the expiration date on the package:

- ❑ Black ink cartridge: S020189
- ❑ Color ink cartridge: S020191

If you need to replace an ink cartridge **before** you see a message (because the ink is too old, for example) follow the instructions in "Replacing an Outdated Ink Cartridge" on page 9.

Removing and Installing Ink Cartridges

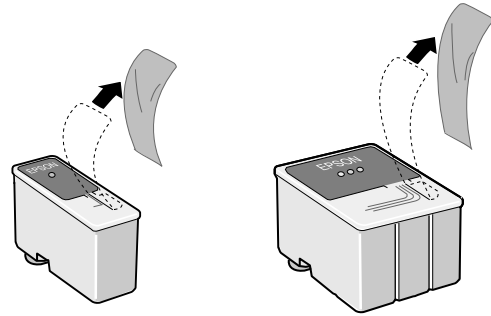
You can replace a cartridge whenever you see a message that the cartridge is low on ink or empty. (If you press the  cleaning button before you see a message, the EPSON Stylus Scan cleans the print head, as described on page 9. Follow these steps:

1. Remove the new ink cartridge from its package.

Caution:

You must remove the yellow tape from the top of the cartridge or you will permanently damage it. Do not remove the clear seal from the bottom of the cartridge, or ink will leak out.

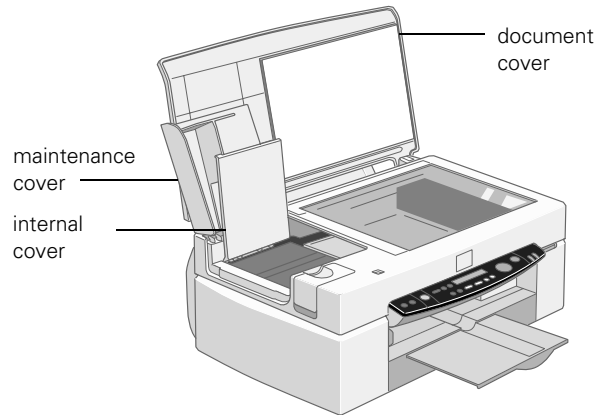
2. Remove only the yellow part of the tape seal on top. Don't pull off the blue portion or try to remove the clear seal underneath the cartridge.




Note:

If you have an automatic document feeder, remove it from the EPSON Stylus Scan, but don't disconnect it from the option interface.

3. Make sure the EPSON Stylus Scan is turned on and not printing. Open the document cover, and then open the maintenance cover. The internal cover opens automatically.



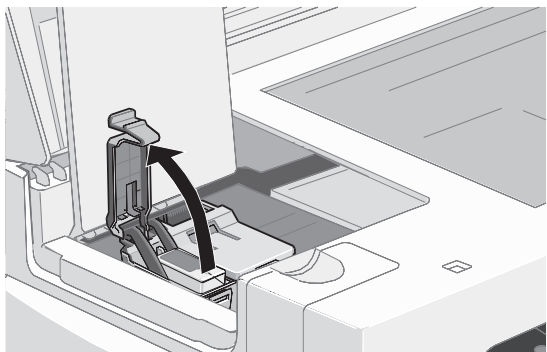
4. Press the  cleaning button and hold it for about three seconds until the print head moves left and the **Operate** light begins flashing.

Caution:

Don't open the clamp or remove a cartridge except to replace it with a new one. Once you remove a cartridge, you can't reuse it, even if it contains ink.

Also, never move the print head by hand.

5. Pull up the ink cartridge clamp. The cartridge rises up from its holder.

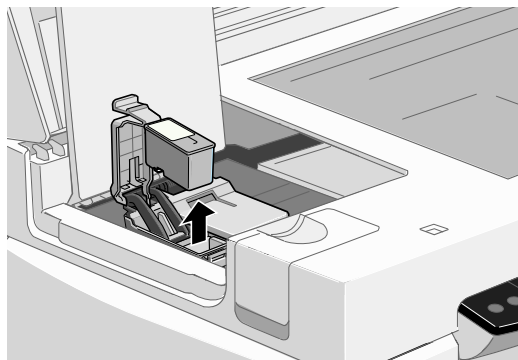


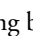
Warning:

If ink gets on your hands, wash them thoroughly with soap and water. If ink gets into your eyes, flush them immediately with water.

Keep ink cartridges out of the reach of children.

6. Lift the cartridge out of the EPSON Stylus Scan and dispose of it carefully.
7. Lower the new ink cartridge into its holder with the label facing up and toward the back of the printer. Don't press down on the cartridge.
8. Press down the ink cartridge clamp until it locks in place.



9. If you need to replace the other ink cartridge, repeat the preceding steps before going on to step 10.
10. Close the maintenance and document covers, and then press the  cleaning button.

Caution:

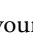
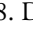

Never turn off the printer while the Operate light is flashing, unless the printer hasn't moved or made any noise for more than five minutes.

The EPSON Stylus Scan moves the print head and begins charging the ink delivery system. The Operate light flashes and the printer makes various sounds. Charging takes about 60 seconds. When it's finished, the Operate light stops flashing and stays on.

Replacing an Outdated Ink Cartridge

Even if you don't see a message that a cartridge is low on ink or empty, you may need to replace it if it's more than six months old. If your printouts don't look as good as they used to, try cleaning and aligning the print head first. If print quality doesn't improve, try replacing one or both cartridges.

Follow these steps to replace an ink cartridge **before** you see a message on the LCD status display panel:

1. Prepare your new ink cartridge for installation as described in "Removing and Installing Ink Cartridges" on page 8.
2. Make sure the EPSON Stylus Scan is turned on and not printing. Then open the document and maintenance covers.
3. Press the  load/eject button and hold it down for about three seconds until the print head moves left. The Operate light begins flashing.
4. Remove the old ink cartridge and install the new cartridge as described in "Removing and Installing Ink Cartridges" on page 8. Don't press the  cleaning button, however.
5. Close the maintenance and document covers and press the  load/eject button.

Caution:

To avoid damaging the printer, never move the print head by hand.

The EPSON Stylus Scan moves the print head and begins charging the ink delivery system. The Operate light flashes and the printer makes various sounds. Charging takes about 60 seconds. When it's finished, the Operate light stops flashing and stays on.

Cleaning the Print Head


If your printouts are light or have gaps in the image, you may need to clean the print head. This unclogs the nozzles so they can deliver ink properly.

Cleaning the print head uses ink, so clean it only if print quality declines. You can clean the print head using either:

- The Head Cleaning utility in your printer software (with the printer connected to a local port, not over a network)
- The EPSON Stylus Scan's control panel buttons.

Using the Head Cleaning Utility

1. Make sure the EPSON Stylus Scan is turned on but not printing. Also, make sure that there's no ink out message on the LCD status display panel.

2. Start an application and open a document. Access the printer settings dialog box.
3. Click the **Utility** tab (Windows) or the  Utility icon (Macintosh). You see the Utility menu.
4. Click the **Head Cleaning** icon. Follow the instructions on the screen to print a test page.
5. Follow the instructions on the screen to clean the print head.

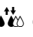

Caution:

Never turn off the EPSON Stylus Scan while the Operate light is flashing, unless it hasn't moved or made any noise for more than 5 minutes.

Cleaning takes a couple minutes, during which the EPSON Stylus Scan makes some noise and the Operate light flashes. When the Operate light stops flashing, continue with the next step.

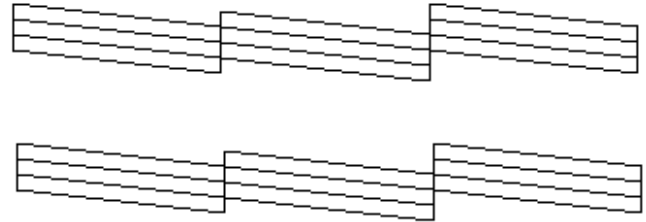
6. Make sure paper is loaded in the EPSON Stylus Scan and click **Print nozzle check pattern** (Windows) or **Confirmation** (Macintosh). The nozzle check pattern prints. (See page 10 for details.)
7. If the nozzle check pattern is complete, click **Finish**.
If the pattern is missing dots, click **Clean** to run another cleaning cycle.

Using the Control Panel to Clean the Print Head

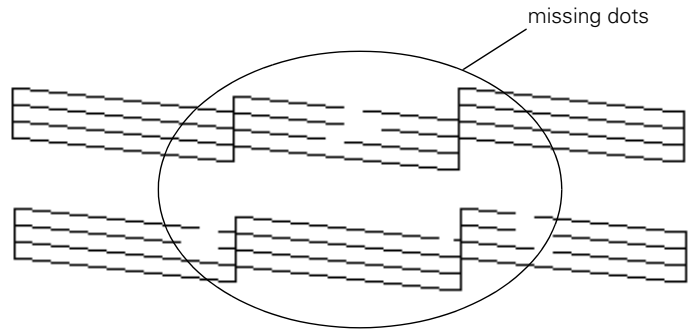
1. Make sure the EPSON Stylus Scan is turned on but not printing. Also, make sure that there's no ink out message on the LCD status display panel.
2. Press the  cleaning button and hold it down for three seconds. Cleaning takes a couple minutes, during which the EPSON Stylus Scan makes some noise and the Operate light flashes.
3. After the Operate light stops flashing, start an application and open a document. If you're connected directly to the EPSON Stylus Scan, continue with step 4.
If you're on a network, print the document. Then go to step 7.
4. Access the printer settings dialog box. Then click the **Utility** tab (Windows) or the  Utility icon (Macintosh). You see the Utility menu.
5. Click the **Nozzle Check** icon, then follow the instructions on the screen to run the nozzle check and clean the print head.

Examining the Nozzle Check Pattern

Examine the nozzle check pattern you print. It should look something like this (the upper pattern should be black; the lower section is divided into blue, red, and yellow sections):



Each staggered horizontal and straight vertical line should be complete, with no gaps in the dot pattern. If your printout looks okay, you're done. If any dots are missing, as shown below, clean the print head again.




Aligning the Print Head

Caution:

Load paper that's at least letter-size width to prevent ink from spraying inside the EPSON Stylus Scan and smudging your printouts. For best results, load EPSON ink jet paper whenever you check the print head alignment.

If your printouts contain vertical bands or crooked vertical lines, you may need to use the Print Head Alignment utility in your printer software. Your EPSON Stylus Scan must be connected directly to a local port, not over a network, to use this utility. Follow these steps:

1. Make sure the EPSON Stylus Scan is turned on and paper is loaded.
2. Start an application and open a document.
3. Access the printer settings dialog box.
4. Click the **Utility** tab (Windows) or the  Utility icon (Macintosh). You see the Utility menu.

5. Click the Print Head Alignment icon. Follow the instructions on the screen to print a test page and select the correct alignment.

Cleaning the EPSON Stylus Scan

To keep your EPSON Stylus Scan operating at its best, clean it several times a year. Follow these steps:

1. Turn the EPSON Stylus Scan off, unplug the power cord, and disconnect the cable.

Warning:

Be careful not to touch the internal gears.

2. Remove all paper from the sheet feeder.
3. Use a soft brush to clean loose dust and dirt.
4. Use a soft, clean cloth and mild detergent to clean the outer case and inside of the sheet feeder. Be careful not to soak the cloth—just dampen it. Keep the document and maintenance covers closed to prevent moisture from getting inside.
5. Clean the document table with a soft, dry cloth, or with a blower brush.
6. If ink leaks inside the EPSON Stylus Scan, wipe it away with a damp cloth.

Caution:

Never use alcohol or thinners, and never spray lubricants inside the EPSON Stylus Scan. You could damage the printer mechanisms.

Transporting the EPSON Stylus Scan

Caution:

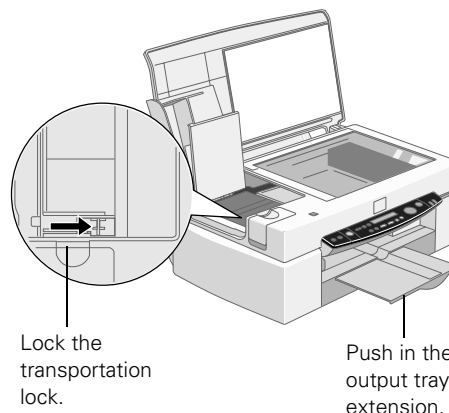
To avoid damage, always leave the ink cartridges installed when transporting the EPSON Stylus Scan. Also, remember to lock the print head and the transportation lock.

For short moves, you can just pick up the EPSON Stylus Scan and set it down. For longer moves, you need to repack it in its original box and lock the print head and transportation lock.

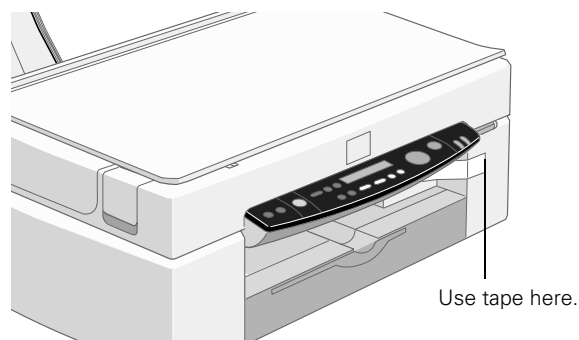
Follow these steps:

1. Turn on the EPSON Stylus Scan and wait until the print head locks in position. Then turn off the EPSON Stylus Scan.
2. Unplug the power cord, and then disconnect the interface cable.
3. Open the document and maintenance covers.

4. Push the transportation lock right to lock the scanner carriage.



5. Close the maintenance and document covers.
6. Remove all paper from the sheet feeder, and then remove the paper support.
7. Push in the output tray extension.
Caution:
Be sure to remove the tape used in step 8 before printing.
8. Use tape to secure the document cover. Secure the ink cartridge holder to the printer with tape, as shown below.



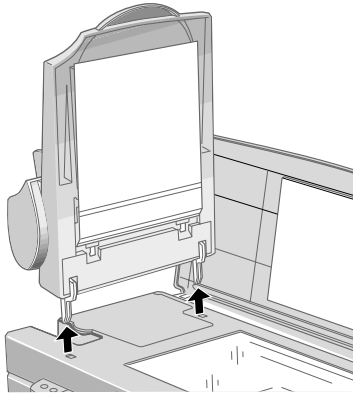
9. Use the original box and packing materials to repack the EPSON Stylus Scan.
10. Keep the EPSON Stylus Scan level during transport.

Cleaning the Automatic Document Feeder's Paper Path Guide

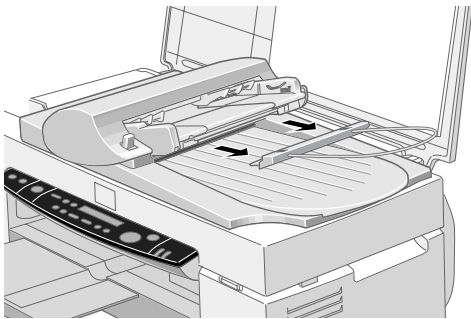
If you have an automatic document feeder and the quality of your scans or copies declines, cleaning the paper path guide might fix the problem.

Turn off the EPSON Stylus Scan, then follow these steps to clean the guide:

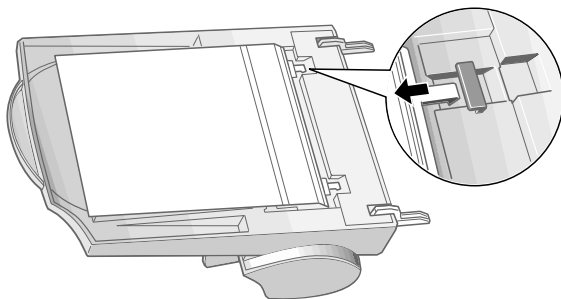
1. Disconnect the automatic document feeder's connector from the EPSON Stylus Scan's option interface.
2. Lift the automatic document feeder straight up to remove it.



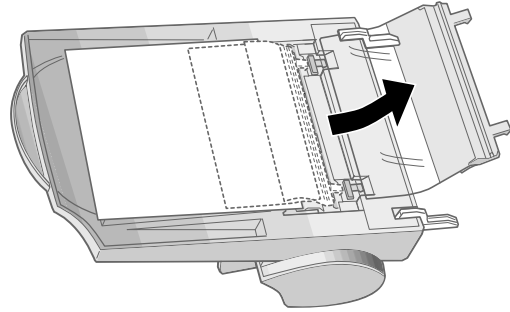
3. Remove the paper support.



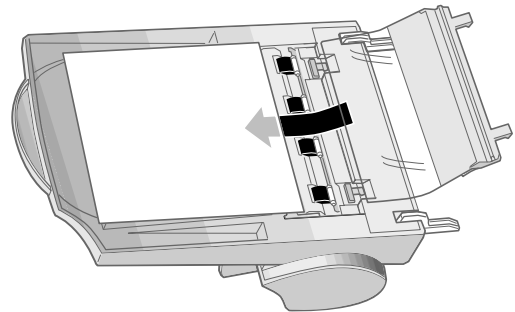
4. Place the automatic document feeder on a flat surface and turn it over. Locate the two white tabs at one end of the paper path guide. Pull the tabs slightly up, then push them through the brackets.



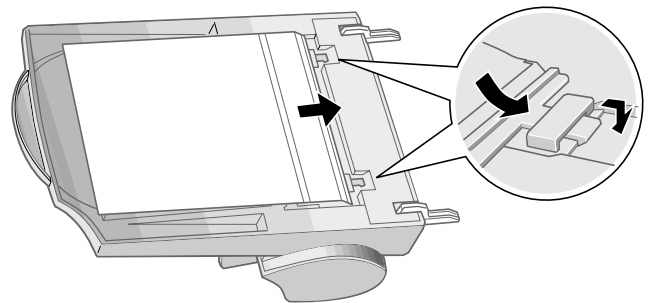
5. Pull the paper path guide up and out.



6. Using a soft, dry cloth, gently wipe any dust from the guide's transparent plastic sheet. Be careful not to scratch the guide.
7. Reattach the paper path guide. Insert the transparent plastic sheet under the white mat.



8. Insert the guide's tabs through the brackets at the back of the automatic document feeder. Push until the tabs clip into place.



Related Documentation

TM-SCAN2500	EPSON Stylus Scan 2500 Service Manual
PL-SCAN2500	EPSON Stylus Scan 2500 Parts Price List
CPD-8875	EPSON Stylus Scan 2500 <i>User's Guide</i>
CPD-8874	EPSON Stylus Scan 2500 <i>Start Here</i> sheet