

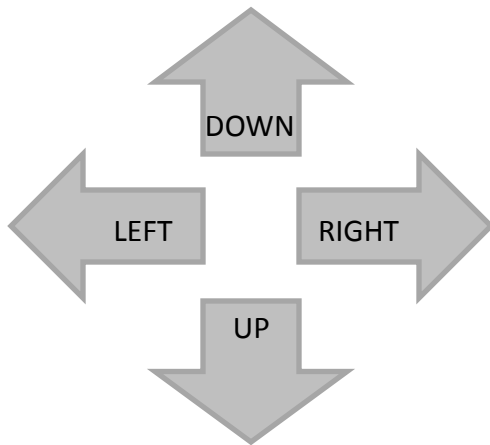


Installing Your Multifunction to Additional Computers on Your Network

PIXMA MX340/ PIXMA MX350/ PIXMA MX870

Mac OS

Navigation Tips for Macintosh Users



To navigate this guide, please use the arrows on the MAC keyboard or use the PAGE UP and Page DOWN keys.



Installing Your Multifunction to Additional Computers on Your Network

PIXMA MX340/ PIXMA MX350/ PIXMA MX870

Mac OS

Important Information You Need Before Adding Your Multifunction	4
Installing the Drivers & Software	5
Registering the Printer & Scanner	10

Important Information You Need Before Adding Your Multifunction

Important Information You Need Before Adding Your Multifunction

Before connecting the machine to the network, make sure that configuration of the computer and access point or router is complete, and that the computer is connected to the network.

If your Multifunction printer has already been setup on another computer in your wireless network, it is only necessary to install the Drivers and software and register the printer and scanner. No further settings need to be made on the printer itself.

Installing the Drivers & Software

Installing the Drivers & Software

To use the machine by connecting it to a computer, software including the drivers needs to be copied (installed) to the computer's hard disk. The installation process takes about 20 minutes. (The installation time varies depending on the computer environment or the number of applications to be installed.)

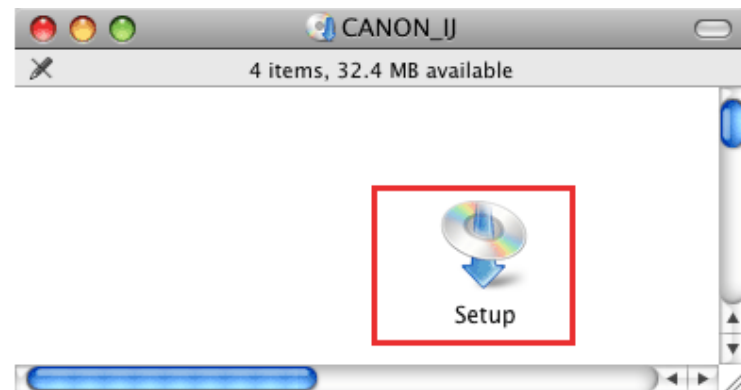
Step One

Turn on the computer, then insert the **Setup CDROM** into the CD-ROM drive

Step Two

Double-click the **Setup** icon of the CD-ROM folder to proceed to the following screen.

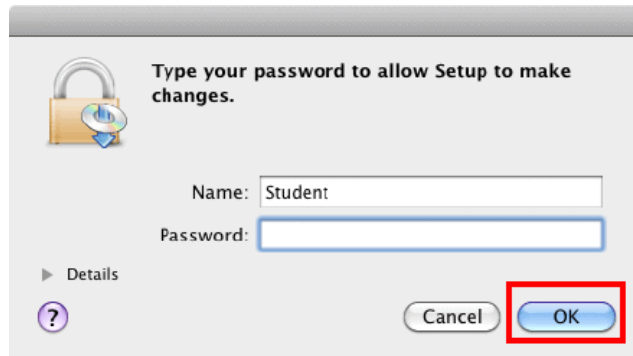
If the CD-ROM folder does not open automatically, double-click the CD-ROM icon on the desktop.




Installing the Drivers & Software

Step Three

Enter your administrator name and password. Click **OK**.



If you do not know your administrator name or password, click Help , then follow the on-screen instructions.

Step Four

Click **Easy Install**. Click **Install**.

The drivers, application software, and on-screen manuals are installed all together.

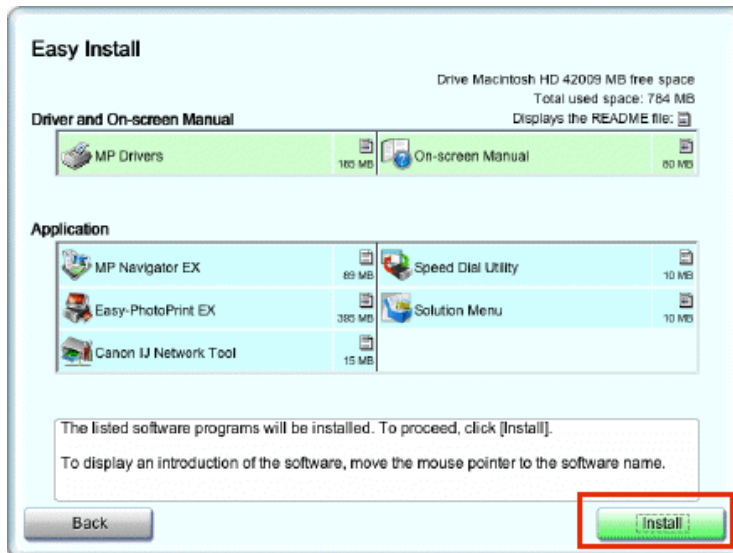


Installing the Drivers & Software

Step Five

Click **Install**

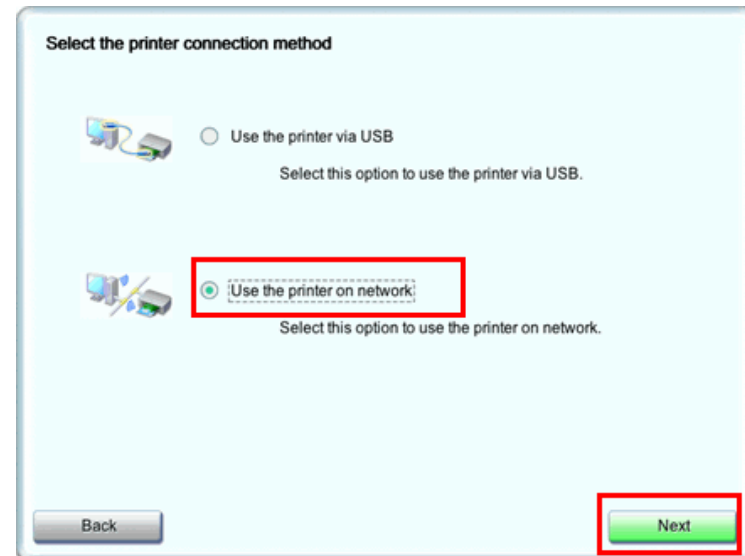
*Applications may vary by model



Step Six

Select **Use the printer on network**, then click **Next**.

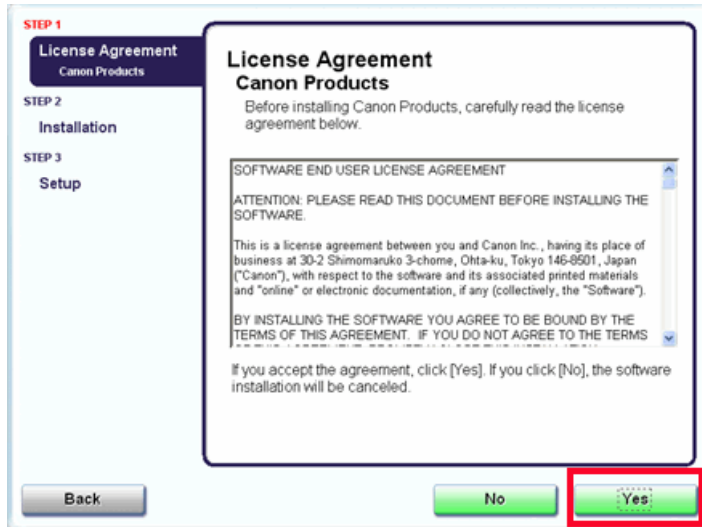
Follow any on-screen instructions to proceed with the software installation.



Installing the Drivers & Software

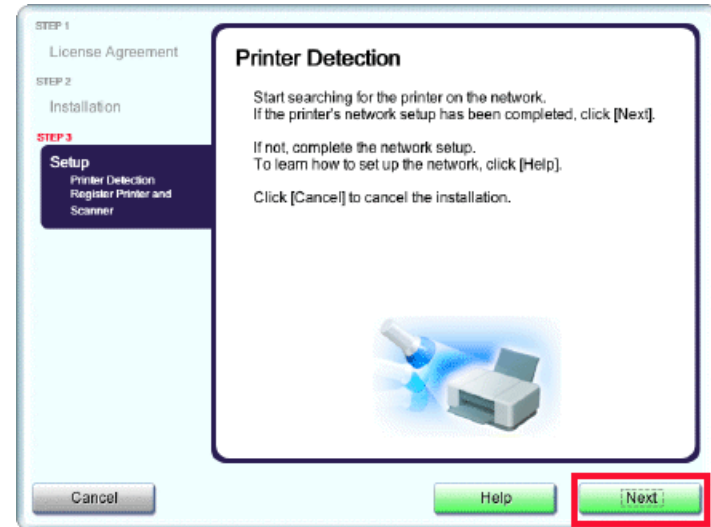
Step Seven

Read the License Agreement screen carefully and click **Yes**.



Step Eight

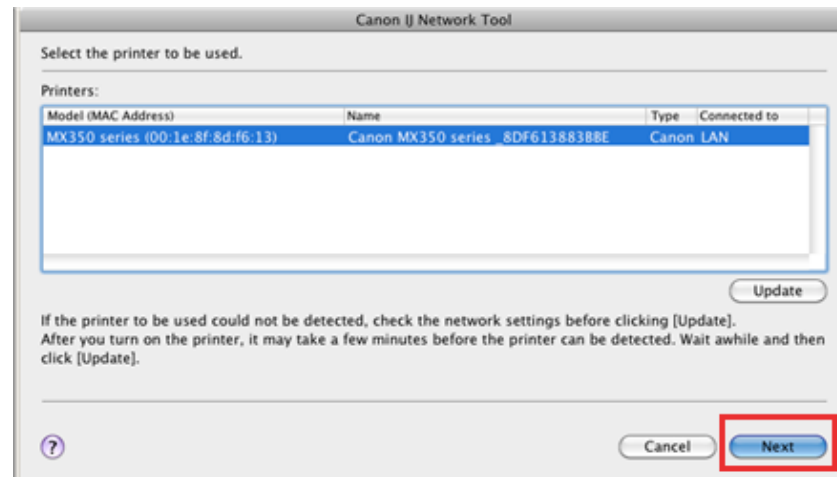
When the **Printer Detection** screen appears, click **Next**



Installing the Drivers & Software

Step Nine

On the **Canon IJ Network Tool** screen, choose your model and click **Next**.



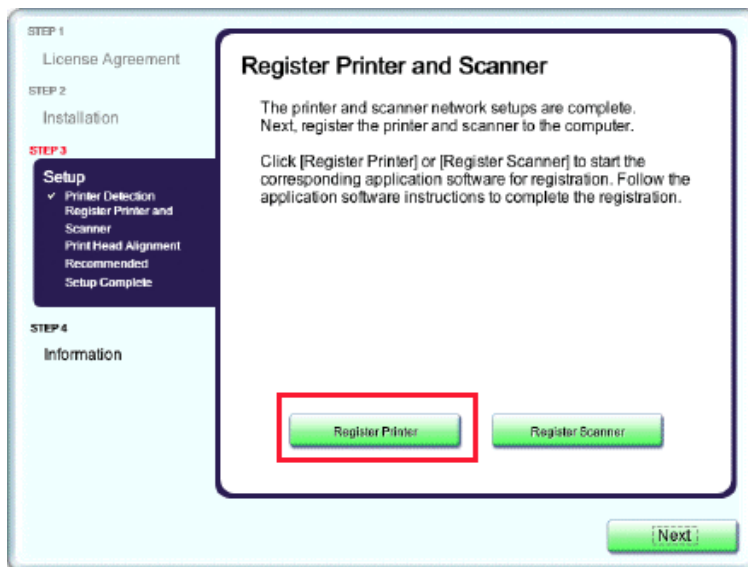
Registering the Printer & Scanner

Registering the Printer & Scanner

This section describes how to register the machine on a Macintosh computer.

Step One

When the **Register Printer and Scanner** screen appears, click **Register Printer**.



Proceed to the section that relates to your operating system for further installation instructions

Mac OS X v. 10.5.x / 10.6.x: Go to Step **2-A**

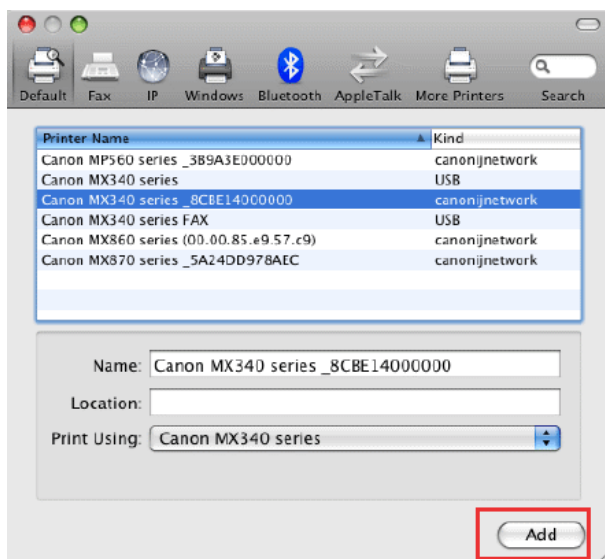
Mac OS X v. 10.4.11: Go to Step **2-B**

Registering the Printer & Scanner

Step Two

2-A

1. Select **Canon IJ Network** in the pop-up menu, select **Canon MXxxx series** in the list of printers, then click **Add** .
***xxx** refers to the model number. **MX340 series** shown in example, below



2. Go to Step Three, [page 13](#).

*The alphanumeric characters after Canon xxxx series is the machine's Bonjour service name or MAC address

Step Two

2-B

1. When the **Printer List** window appears, click **Add**.

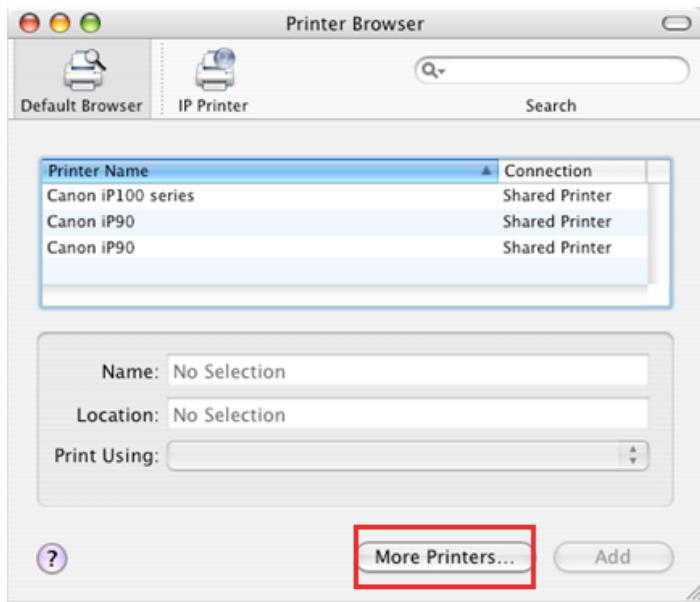


Registering the Printer & Scanner

Step Two (cont)

2-B

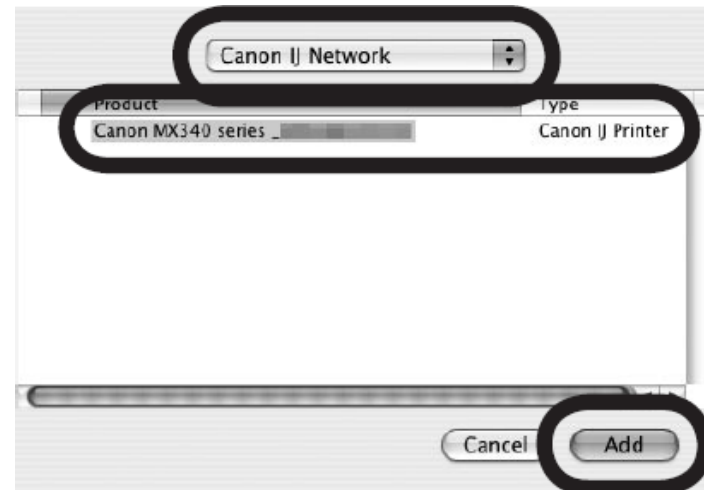
2. Click **More Printers** in the **Printer Browser** window.



Step Two (cont)

2-B

3. Select **Canon IJ Network** in the pop-up menu, select **Canon MXxxx series** in the list of printers, then click **Add**. *xxx refers to the model number. **MX340 series** shown in example, below



Registering the Printer & Scanner

Step Two (cont)

2-B

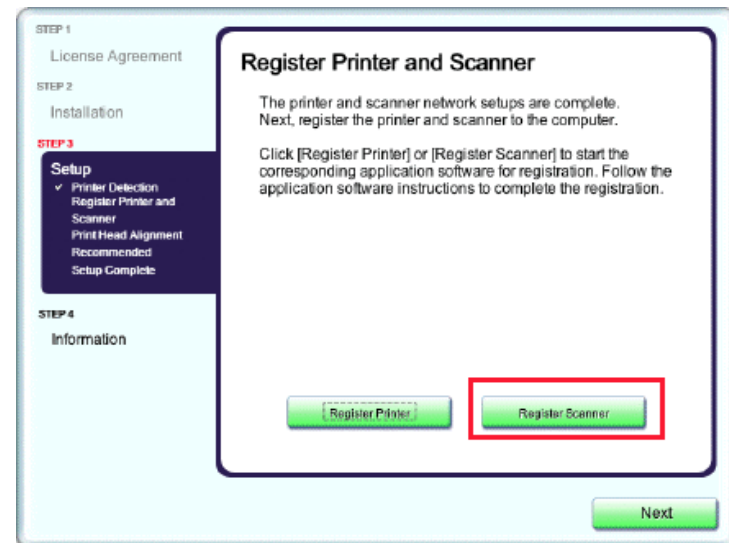
4. Make sure that the **Canon MXxxx series** is added to the list of printers.



*xxx refers to the model number. MX340 series shown in above example.

Step Three

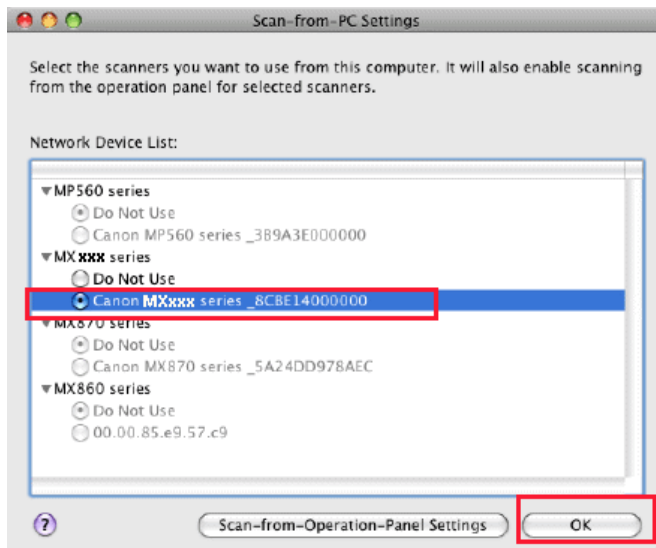
When the **Register Printer and Scanner** screen appears, click **Register Scanner**.



Registering the Printer & Scanner

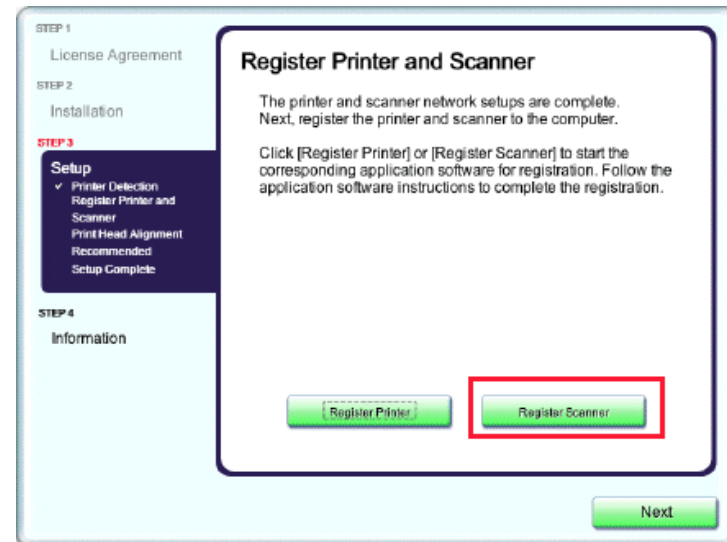
Step Four

Select **Canon MXxxx series** on the **Scan-from-PC Settings** screen, then click **OK**. *xxx refers to the model number.



Step Five

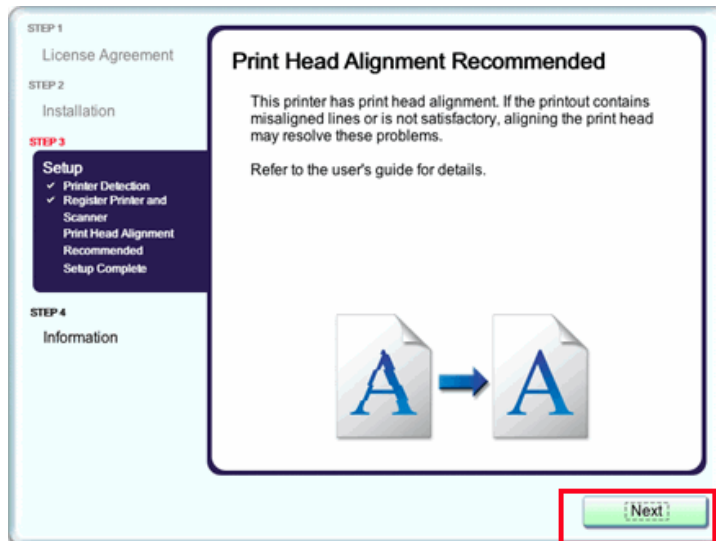
Click **Next** on the **Register Printer and Scanner** screen.



Registering the Printer & Scanner

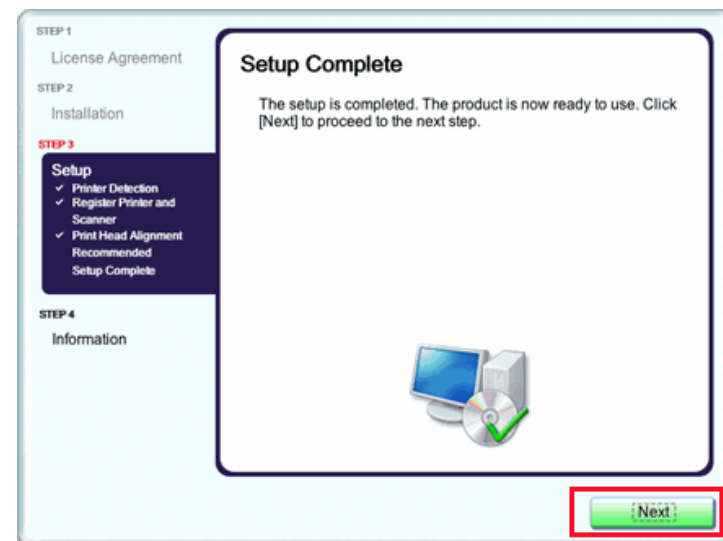
Step Six

Click **Next** on the **Print Head Alignment Recommended** screen.



Step Seven

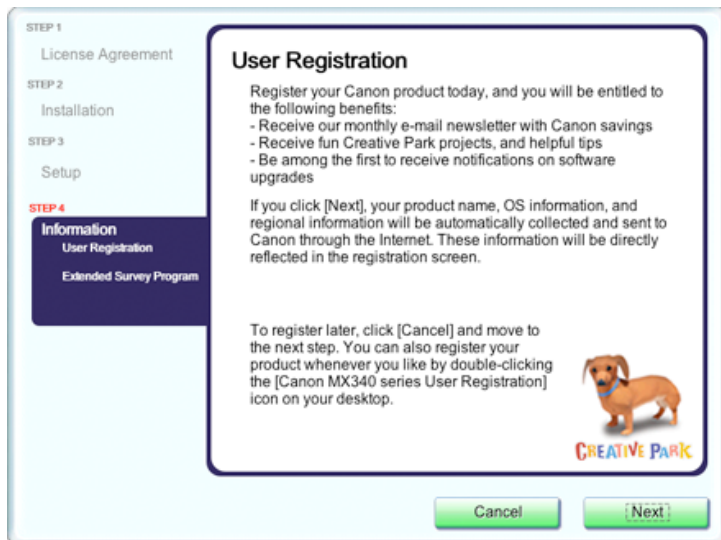
Click **Next** on the **Register Printer and Scanner** screen.



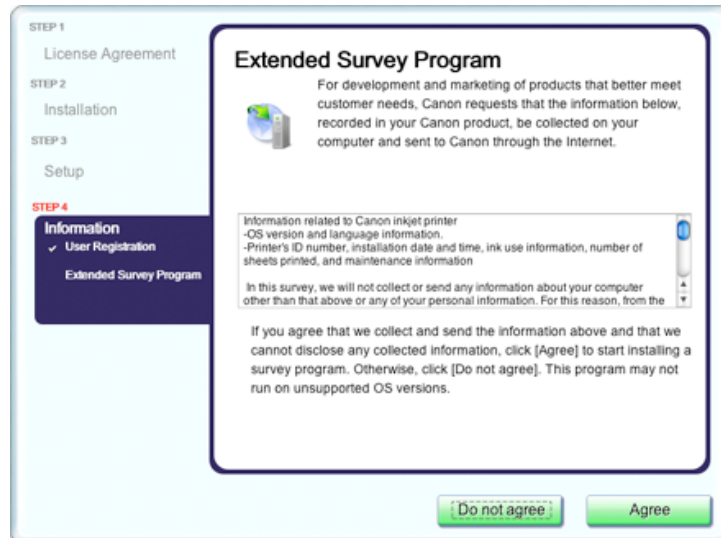
Registering the Printer & Scanner

Step Eight

If the **User Registration** screen appears, read the information and click **Next** or **Cancel**.



If the **Extended Survey Program** screen appears: If you can agree to Extended Survey Program, click **Agree**. If you click **Do not agree**, the Extended Survey Program will not be installed. (This has no effect on the machine's functionality.).



Registering the Printer & Scanner

Step Nine

Click **Exit**. Setup is complete



*It is necessary to restart the computer before scanning using the Operation Panel on the machine for the first time.