

READ THIS SHEET FIRST




Thank you for purchasing the Canon PIXMA MP760. To prepare your machine for use, please follow these Easy Setup Instructions before referring to any other documentation.

Windows

▲ IMPORTANT
Do not connect the USB cable until after the software is installed. See the rear side of this sheet for details.

1 Unpack and install the machine.

Check the package contents.

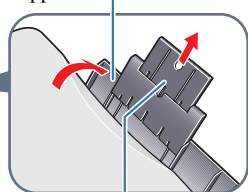
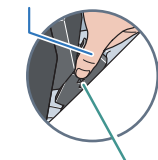
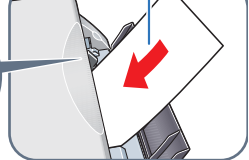
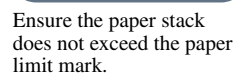
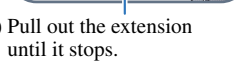
- Machine 
 - Ink tanks
 Black BCI-3eBK 
 - Easy Setup Instructions • Quick Start Guide
 - Setup CD-ROM (Windows: silver, Macintosh: white)
The Setup CD-ROM contains the MP Drivers, as well as the *User's Guide*, *Software Guide* and *Photo Application Guide* in electronic format. Please read these guides.
- Power cord
 - Print head
 - Black BCI-6BK
 - Cyan BCI-6C
 - Magenta BCI-6M
 - Yellow BCI-6Y 

A printer cable is not included. You must purchase a USB cable (less than 10 ft./3 m) to connect your machine to a computer.

2 Connect the power cord.

- 1 Connect the power cord.**
 1. Connect one end of the power cord to the rear of the machine.
 2. Connect the other end to the AC outlet.
- 2 If the message <There is no print head installed. Install the print head.> appears, go to Step 4, "Install the print head."**


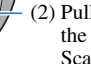
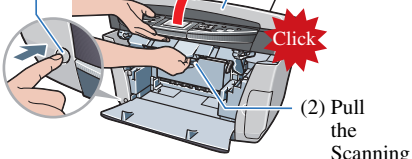
3 Load the paper.

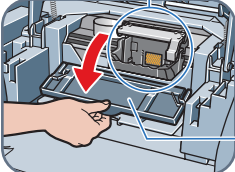
- 1 Open the Paper Support, then pull out the extension.**
- 2 Load a few sheets of letter-size blank paper into the Auto Sheet Feeder.**
 - (1) Open the Paper Support. 
 - Pinch and adjust the paper guide to the width of the stack. 
 - Load the paper with the print side face up. 
 - Ensure the paper stack does not exceed the paper limit mark. 
- (2) Pull out the extension until it stops. 

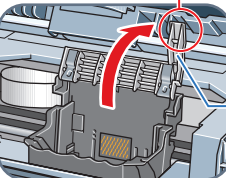
4 Install the print head.


- 1 Ensure that the Paper Output Tray is open. Then lift the Scanning Unit (Printer Cover) until it locks into place.**

▲ IMPORTANT
Be sure to hold the Scanning Unit firmly with one hand.

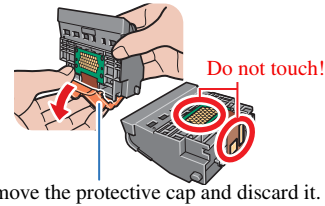
 - (1) If the Paper Output Tray is not open, press the Open Button. 
 - (2) Pull the Scanning Unit Lever. 
 - (3) Lift the Scanning Unit. 
- 2 Remove shipping tape from the Inner Cover and Open Both Inner Covers.**

The Print Head Holder moves to the center. Do not touch the Print Head Holder while it is moving. 
- 3 Raise the lock lever.**

Touch only the lock lever! 

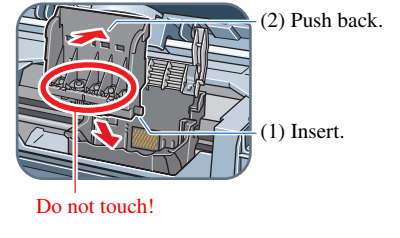
Raise lock lever completely. 

4 Prepare the print head.



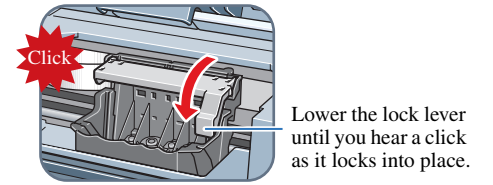
Remove the protective cap and discard it.

5 Insert the print head.



Do not touch!

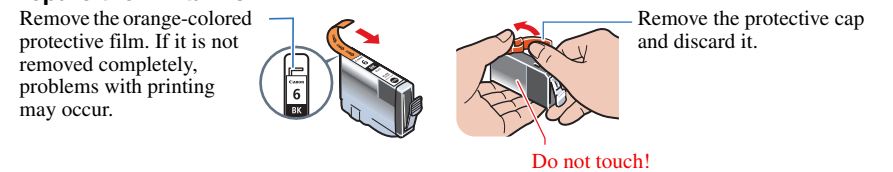
6 Lower the lock lever.



Lower the lock lever until you hear a click as it locks into place.

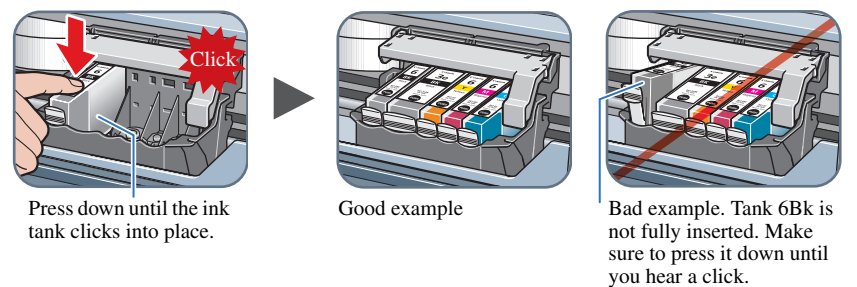
5 Install the ink tanks.

1 Prepare the ink tanks.



Remove the orange-colored protective film. If it is not removed completely, problems with printing may occur.

2 Insert the ink tanks.

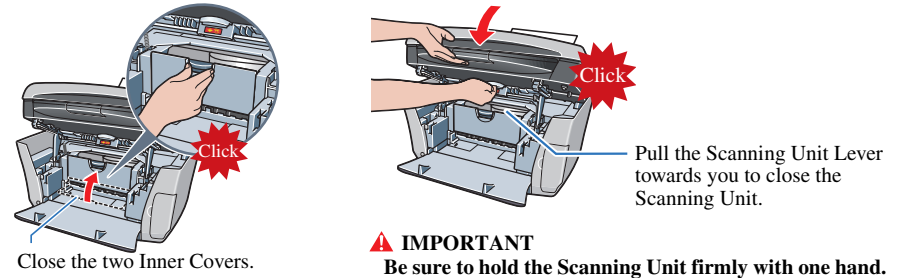


Press down until the ink tank clicks into place.

Good example

Bad example. Tank 6Bk is not fully inserted. Make sure to press it down until you hear a click.

3 Close the Inner Covers and the Scanning Unit (Printer Cover).



Close the two Inner Covers.

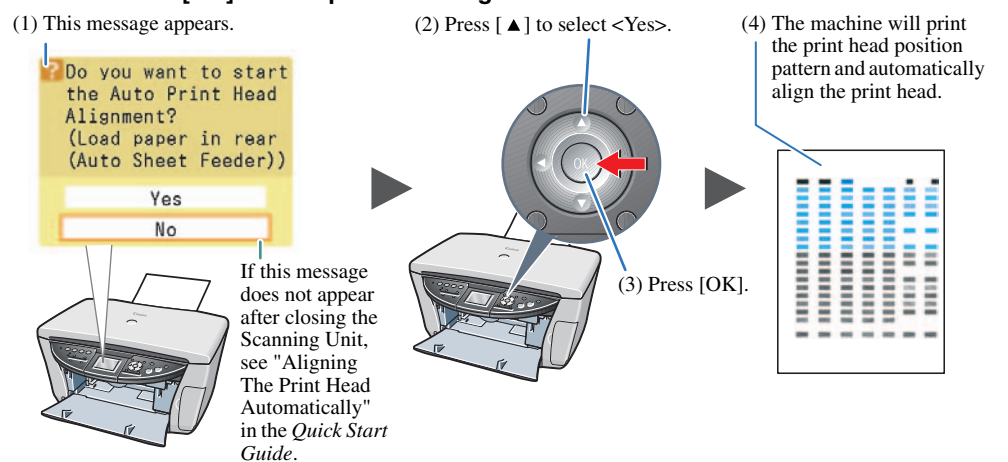
Pull the Scanning Unit Lever towards you to close the Scanning Unit.

▲ IMPORTANT
Be sure to hold the Scanning Unit firmly with one hand.

6 Align the print head from the Operation Panel.

Be sure to align the print head to ensure print quality.

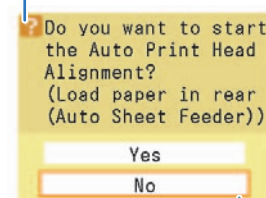
1 Press [OK] to start print head alignment.



(1) This message appears.

(2) Press [▲] to select <Yes>.

(4) The machine will print the print head position pattern and automatically align the print head.



If this message does not appear after closing the Scanning Unit, see "Aligning The Print Head Automatically" in the *Quick Start Guide*.

(3) Press [OK].

If the printed pattern matches the illustration, print head alignment is complete.

You can change the language displayed on the LCD.

For details, see "Selecting The Language For The LCD" in the *Quick Start Guide*.

Hardware setup and print head alignment is complete.

If you are connecting the machine to a computer for use, see the rear side of this sheet for instructions on installing the software.

Install the software.

Select Easy Install in order to install the application software, electronic manual and MP drivers. Select Custom Install in order to choose the options you would like to install. This sheet explains Easy Install Only.

▲ IMPORTANT
Temporarily disable any firewall software and close any open applications, including anti-virus software. Computer security programs can be re-started after software installation.

Windows

The following software programs are included on the Setup CD-ROM:

On-screen Manual	MP Drivers	MP Navigator
Easy-PhotoPrint	Easy-WebPrint	ScanSoft OmniPage SE
ArcSoft PhotoStudio		

▲ IMPORTANT

- Do not connect the USB cable until Step 3, "Connect the USB cable."
- You must log on as an administrator or have administrative privileges in order to install the software in Windows XP or Windows 2000.
- If you have an earlier version of the MultiPASS Suite software installed on your computer, uninstall this version before installing the new version. For instructions on uninstallation, see the guides for that version of MultiPASS Suite.

Step 1: Prepare the Setup CD-ROM and get ready to install.

- Turn ON your computer, and start Windows.
- Insert the Setup CD-ROM (silver) into the CD-ROM drive.
 - The setup program should automatically run. If the installer in the CD-ROM does not run automatically, click [Start] and select [My Computer], then double-click the CD-ROM icon.

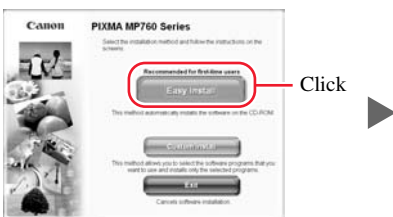
▲ IMPORTANT
If the following screen appears, the USB cable is connected.

- Perform the following steps.
 - Disconnect the USB cable.
 - Click [Cancel].



Step 2: Install the software and follow on screen instructions.

- Click [Easy Install], then click [Install].
 - To read descriptions of the software programs, click the icon.
 - To read restrictions of the software programs, click the icon.



- Click [Yes].
 - Installation begins. Follow the on-screen instructions to install the software.



- Click [Exit].
 - If prompted to, restart your computer.



When the Registration Screen appears, follow on screen instructions to register your product. You will need your product serial number, which is located on the back of the machine.

Step 3: Connect the USB cable.

- Make sure both your machine and the computer are turned ON.
- When you connect the USB cable, the computer will automatically detect and configure any necessary settings.

In Windows 2000, the machine may not be set as the default printer.

You now have completed installation of the software.

Macintosh

The following software programs are included on the Setup CD-ROM:

On-screen Manual	MP Drivers	MP Navigator
Easy-PhotoPrint	ScanSoft OmniPage SE	ArcSoft PhotoStudio

▲ IMPORTANT
Do not connect the machine to Mac OS 9 or Mac OS X Classic environments since they are not supported.

Step 1: Connect the USB cable.

- Make sure the machine is turned ON.

Step 2: Prepare the Setup CD-ROM.

- Turn ON your computer, and start Mac OS X.
- Insert the Setup CD-ROM (white) into the CD-ROM drive.
 - The setup program should automatically run. If the setup program does not automatically run, double-click [Setup] on the Setup CD-ROM, or click [Setup] on the Setup CD-ROM and click [File] menu and then select [Open].

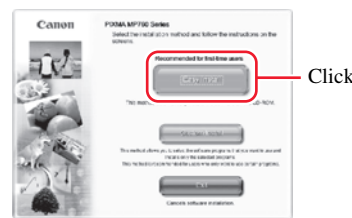
Step 3: Enter the name and password for an Administrator Account.

- Enter the name for Administrator.
- Enter the password and then click [OK].



Step 4: Install the software and follow on screen instructions.

- Click [Easy Install], then click [Install].
 - To read descriptions of the software programs, click the icon.
 - To read restrictions of the software programs, click the icon.



- Click [Yes].
 - Installation begins. Follow the on-screen instructions to install the software.



- Click [Continue].
 - Follow the displayed instructions.



- Click [Restart] to restart your computer.



*** When connecting from Mac OS X v.10.3.3 or earlier:**
Restarting the computer while connected to the machine may cause the machine not to be detected. To resolve this, either unplug the USB cable then plug it back in again, or turn the machine OFF then back ON again.

When the Registration Screen appears, follow on screen instructions to register your product. You will need your product serial number, which is located on the back of the machine.

- Perform the following to make sure the driver has been installed correctly.
 - Double-click the Macintosh HD icon where you installed the MP Drivers, then double-click the [Applications] folder.
 - Double-click the [Utilities] folder, then double-click the [Printer Setup Utility] ([Print Center] when using Mac OS X v.10.2.x) icon.
 - If the printer is displayed in the [Printer List], the printer driver is installed.
 - If the printer is not displayed in the [Printer List], click [Add] in the [Printer List] and select [USB] from the pop-up menu. Select [MP760] from the [Product] list and click [Add].

You now have completed installation of the software.