

## Please read these instructions

Congratulations! You have a state-of-the-art flat widescreen digital LED Backlight TV (ML2241/ML2441/ML2442)/ LCD TV (MK2443) which should provide you the years of viewing pleasure. Please take a few minutes to read these quick start instructions through before installing and using the TV.

### About Quick Start Guide

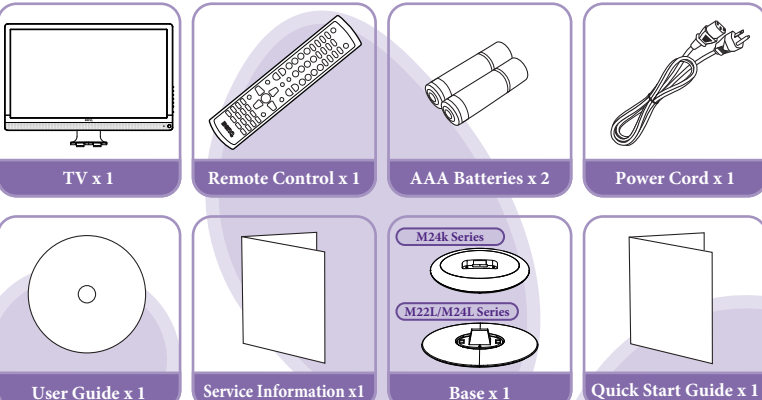
This Quick Start Guide will provide you the introduction of various names and functions, and the relative information of installation of your TV.

### About User Manual

This LED Backlight TV (ML2241/ML2441/ML2442)/ LCD TV (MK2443) also includes the User Manual. It details the features and functions of the TV, and provides product specifications and troubleshooting information for your further assistance. The User Manual also describes how to customize the TV settings so that you can gain the best viewing experience possible to suit your preference and viewing environment.

### Check Package Contents

Unpack the TV and check that all the following items are included:



- The type of power cable supplied may differ from that illustrated, dependant upon your region of purchase.
- Please contact your place of purchase immediately if any question and keep the product documents in a safe place for reference.

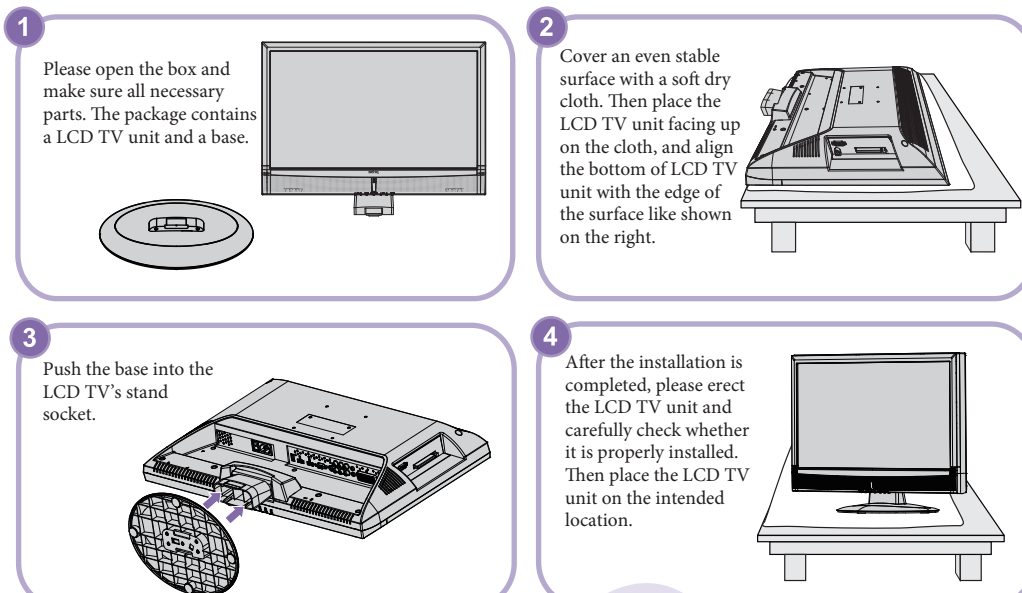
#### Please dispose the packaging wisely:

- The cardboard carton can be recycled.
- Do not leave plastic bags within reach of young children or babies.
- If possible, please properly store all packaging materials to facilitate the delivery of this TV in the future.
- Check that you have not left an accessory inside the packaging before discarding.

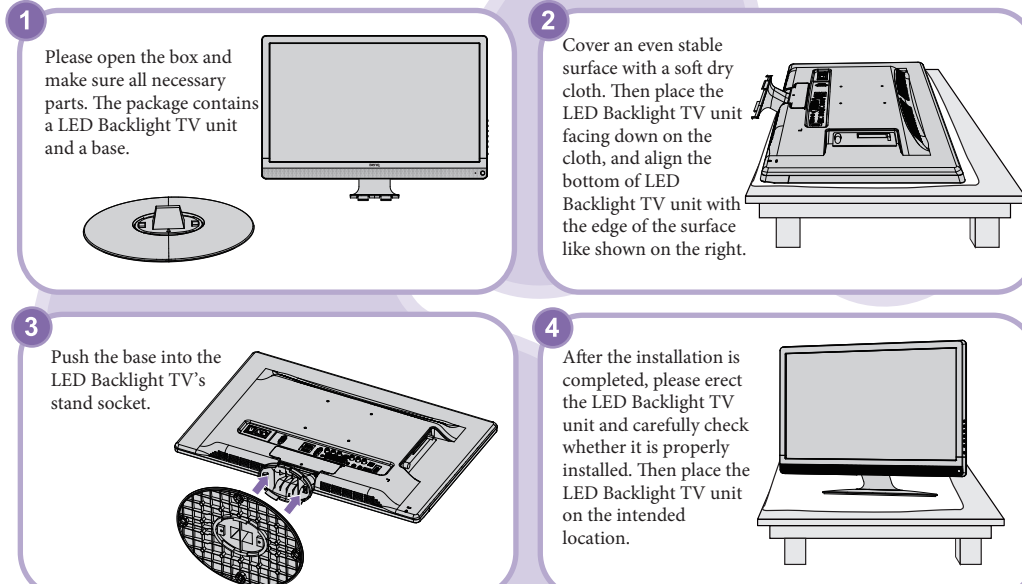
- For the primary safety, this TV should be handled with care to avoid damage to it or to persons which come into contact with it.
- All LCD screens have a very thin protective layer of glass which is liable to marking or scratching, and cracking if struck or pressured. The liquid crystal substrate is also liable to damage under excessive force or extreme temperatures. Please handle with care.
- If you are installing using wall mount, please be noted that screw holes can withstand the maximum torque of 20kgf.cm.

## M24K Series

## Installing the Base

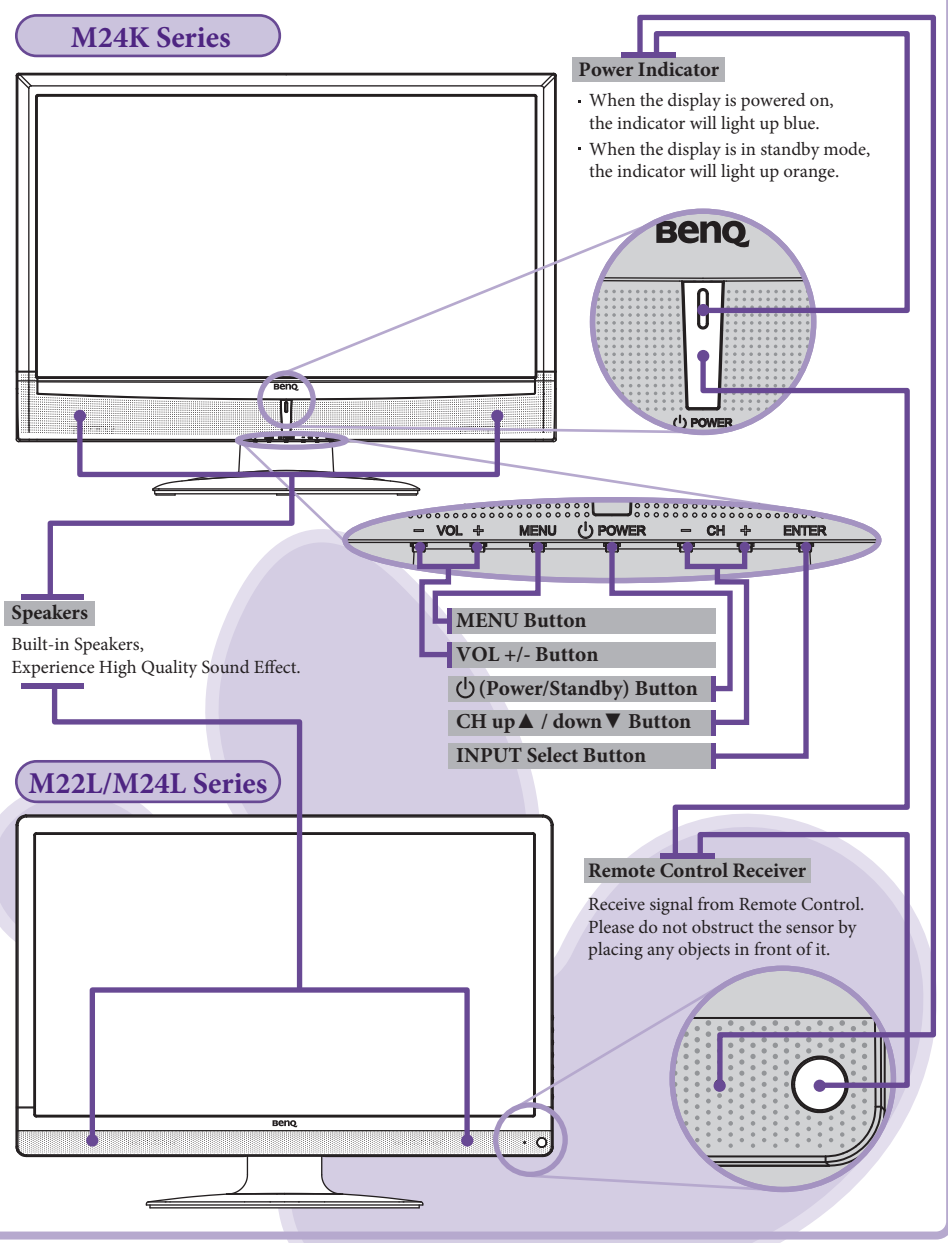


## M22L/M24L Series



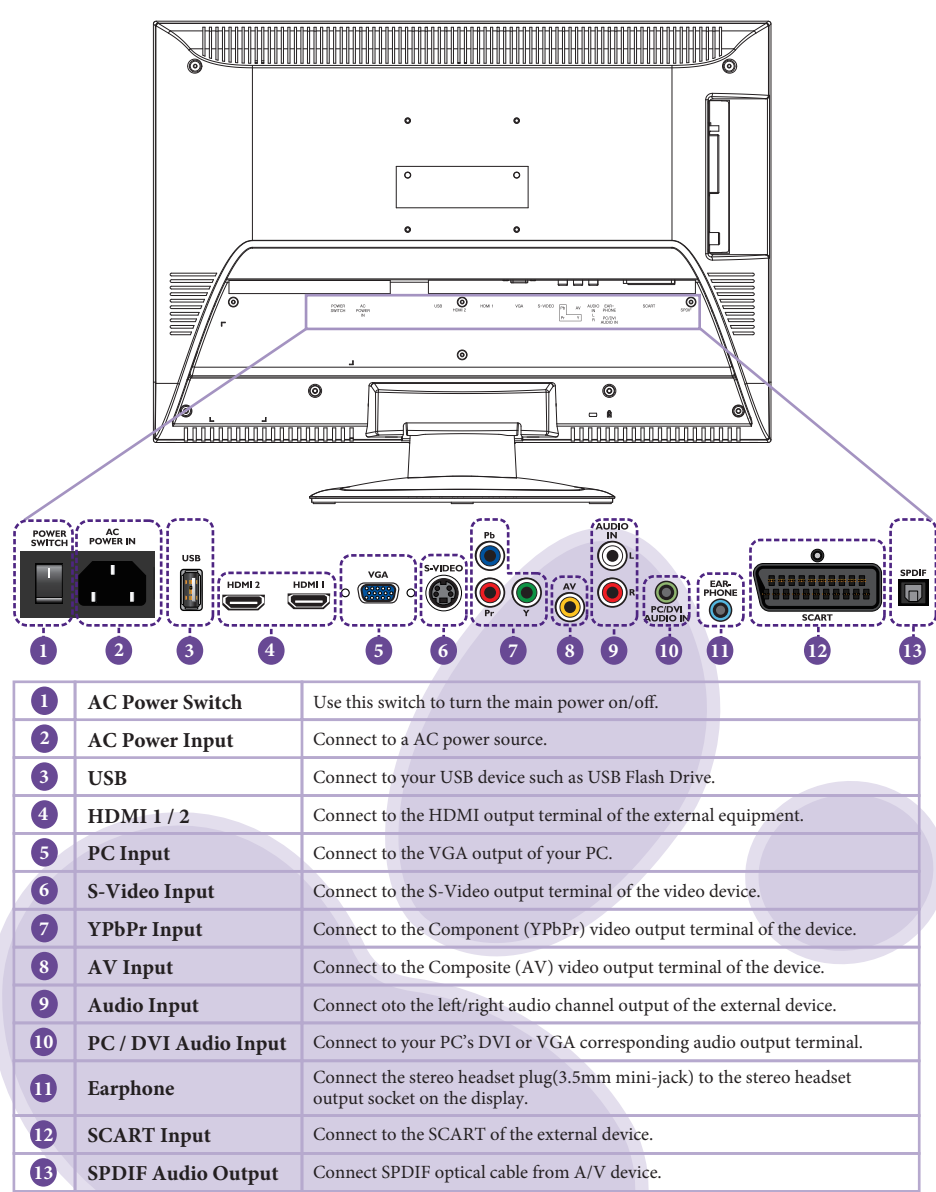
## Know your LCD TV

### Front View of LCD TV/LED Backlight TV



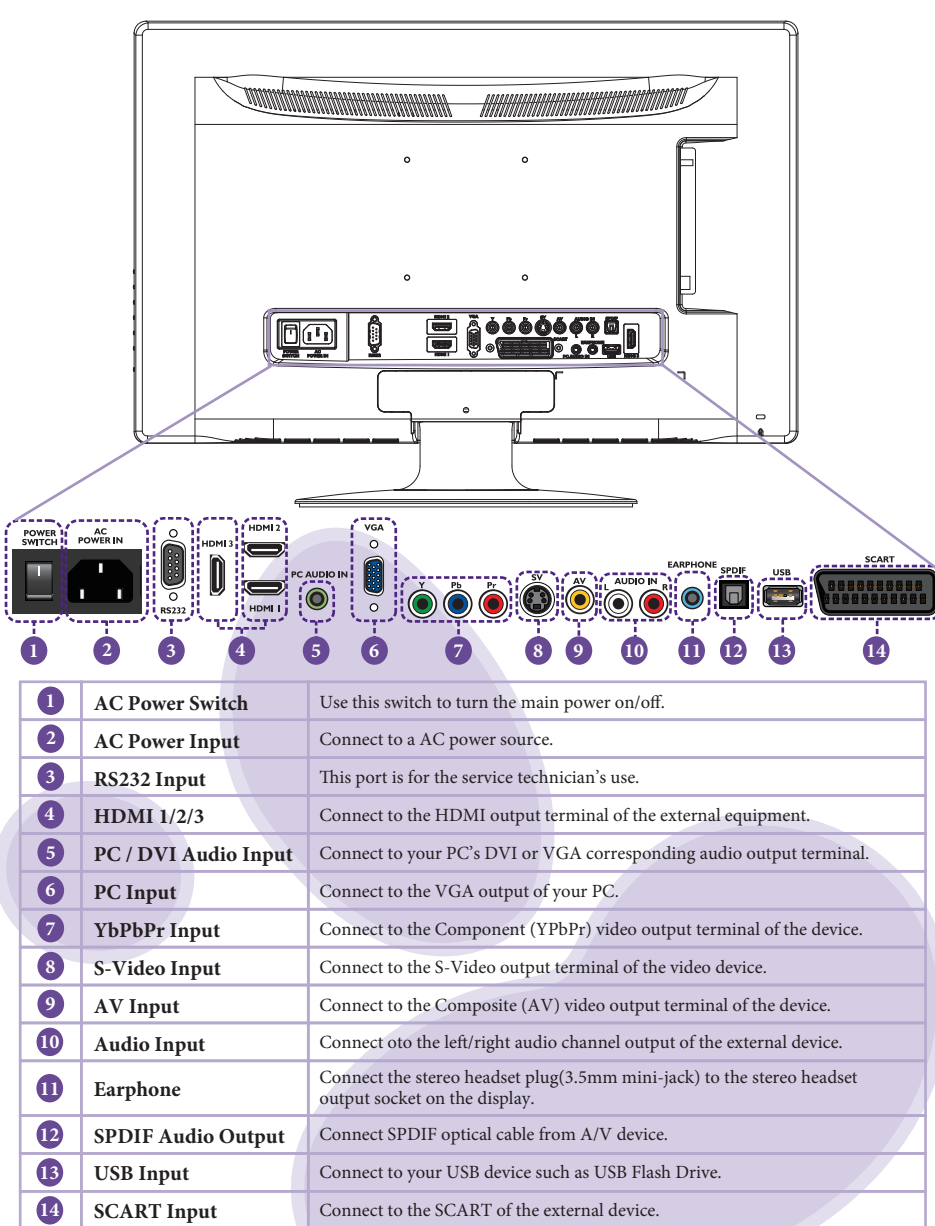
## Know your LCD TV

### Rear View of M24K LCD TV



## Know your LCD TV

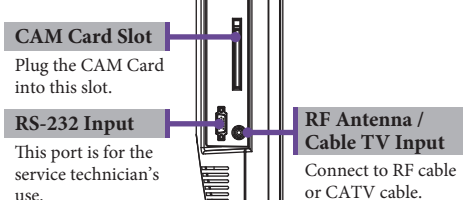
### Rear View of M22L/M24L Series LED Backlight TV



## M24K Series

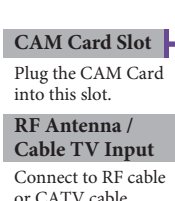
## Know your LCD TV

### Left Side View

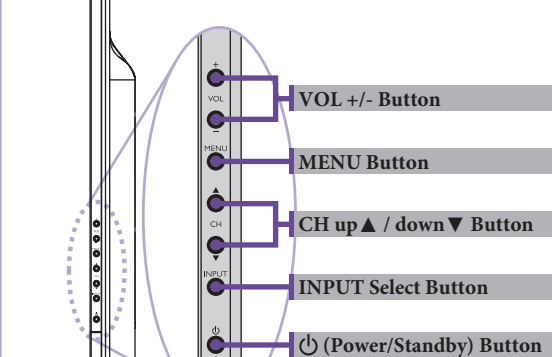


## M22L/M24L Series

### Left Side View



### Right Side View



## Connected External Audio/Video Device

The following table lists a variety of different terminals to connect an external audio/ video device, provided by the difference in picture quality as a reference. Recommendation: Please choose the high picture quality connection if your audio/video device is supported for better effect and experience.

Names	Terminal Appearance / Color	Page Number on User Manual	Blu-Ray Player	DVD Player	Game Console	VHS Video Player	PC
HDMI		29					
Component Y Pb Pr		27					
SCART		27					
S-Video		28					
Composite AV		26					
DVI		29					
PC D-Sub		28					

Best Picture Quality
 Better Picture Quality
 Good Picture Quality
 Average Picture Quality
 Not Recommended



#### Notice while connected

For safety reasons, please do not connect the power of this LED Backlight TV (ML2241/ML2441/ML2442)/ LCD TV (MK2443) before connecting to any external audio/video device(s). Please make sure the power of the external device is also switched off.