

Canon



ENTERPRISE PRINTING SOLUTIONS



imageRUNNER 5075
shown with optional accessories



imagePASS-S2

ENTERPRISE PRINTING SOLUTIONS

ACHIEVING HIGH-END PRINTING FOR DEMANDING ENVIRONMENTS

Mid-range production printing environments often have tight deadlines, high customer expectations, and different platforms. The imagePASS-S2 controller offers a powerful and flexible foundation for managing environments with distributed operations, multiple platforms, and different operator skill levels. It provides businesses with outstanding performance and seamless workflow management.



imageRUNNER 7105*



The imagePASS-S2 server incorporates the newest controller technology for production printing and corporate environments, offering a sophisticated, scalable solution. With its process automation, high productivity, and advanced user features, it extends beyond other digital output device offerings. The imagePASS-S2 controller offers expert tools through optional packages for customers with extreme requirements and advanced skills. It also delivers the most comprehensive set of security tools to help meet stringent government and corporate standards.

Its high-performance and flexible, scalable technology also allow users to customize the imagePASS-S2 to their business needs. When combined with the black-and-white Canon imageRUNNER® devices, the imagePASS-S2 handles even the most advanced digital printing requirements,** such as saddle-stitched sales proposals, tabs, 3-hole-punched training manuals, Z-folded spreadsheets and C-folded letters or mailings, or even perfect-bound employee handbooks.

* Shown with optional accessories

** Optional finishing capabilities vary depending on imageRUNNER device

POWERFUL FOUNDATION WITH FLEXIBILITY TO EXPAND

BOOSTS PRODUCTIVITY WITH HIGH PERFORMANCE

The imagePASS-S2 controller's powerful architecture shortens turnaround times so companies can process and print those mission-critical documents on a tight deadline. Its production features allow it to RIP a new file while printing another file, increasing the printing throughput. Bottlenecks are also reduced at the RIPping stage—with new SmartRIP technology so output is delivered quickly to the printing device, which increases productivity and saves time.

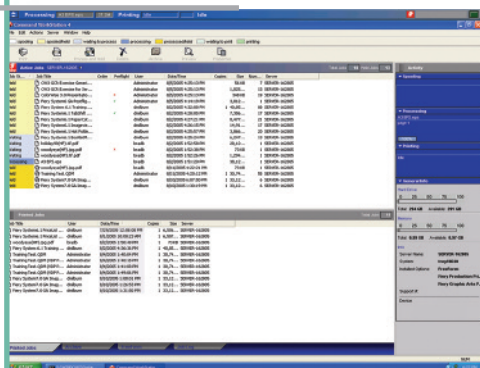
CENTRALIZED CONTROL AND AUTOMATED MANAGEMENT

Distributed printing environments often pose major challenges. The imagePASS-S2 controller offers a centralized solution with the award-winning Command WorkStation®, which supports PC and Macintosh® clients.

The Command WorkStation interactive WYSIWYG interface enables administrators to monitor, control, and troubleshoot production from multiple desktops. In addition, operators also have direct access to all imagePASS functionality and bi-directional communication with the driver. Automated features such as optional Hot Folder and Virtual Printers automate repetitive tasks to reduce waste and errors for greater efficiency and quality assurance.



imageRUNNER 5075 Device Shown with Optional Accessories



Command WorkStation

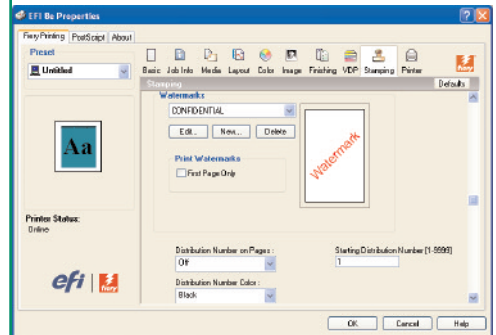
UTILITIES FOR EFFICIENCY

INTUITIVE DRIVER

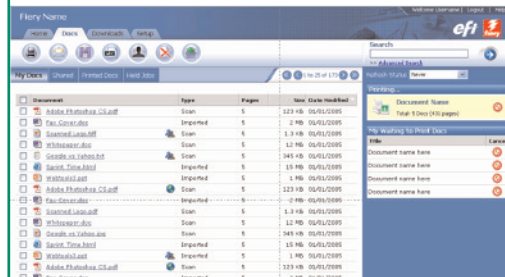
A new graphical layout that's icon-driven gives the users a more intuitive navigation that can provide real-time status of paper and toner levels, as well as monitor printing activity. For even faster steering, "Basic" tab will allow quick access to common selections that can be customized.

WebTools

Users can administer the imagePASS-S2 and conveniently print jobs through any Java-enabled browser as well as view the current status of jobs, install print drivers, and access utilities from their desktop. Completely redesigned, WebTools boasts a fast, perceptive new user interface that simplifies the process of printing.



imagePASS Driver with Watermark



WebTools



SECURITY

Protection you can trust

imagePASS-S2 AUTHENTICATION

imagePASS-S2 administrators can define Administrator, Operator, and Guest users with different management privileges, delegating these roles to manage the controller and limit privileges only to those who require them. Administrators can also limit access using existing LDAP settings as well as Group Printing, IP Filtering, and E-mail Printing features.

LDAP support enables imagePASS-S2 communication with corporate servers using the Lightweight Directory Access Protocol (LDAP) v3. Through LDAP v3, the imagePASS-S2 controller supports the following features:

- E-mail address access
- E-mail address authentication
- User password validation

IP Filtering restricts authorized connections to IP addresses that fall within a particular IP range. Administrators can control which workstations may print to a specific imagePASS-S2 connected device.

E-mail Printing allows administrators to restrict which users may submit jobs to the controller via e-mail. Additionally administrators can store a list of authorized e-mail addresses on the imagePASS-S2 controller to manage use of the e-mail print function.

Only users with administrator access have the ability to activate or deactivate security features on the imagePASS-S2 controller. Administrators may also selectively enable or disable network ports and network services, closing unused network entry points that may otherwise be exploited by unauthorized users.

The imagePASS-S2 controller comes with standard features that repel unauthorized attempts to disable the controller, including General Authentication, Disabling Network Ports and Services, and IP Filtering.

imagePASS-S2 DATA CONFIDENTIALITY

Secured Print keeps printed documents away from prying eyes by requiring users to enter a job-specific password to allow the job to print.

SECURE ERASE

Removes the job file from the HDD by overwriting it multiple times, as well as any electronic data and latent file images.



HOT FOLDERS WITH VIRTUAL PRINTER*

Streamline your workflow

HOT FOLDERS

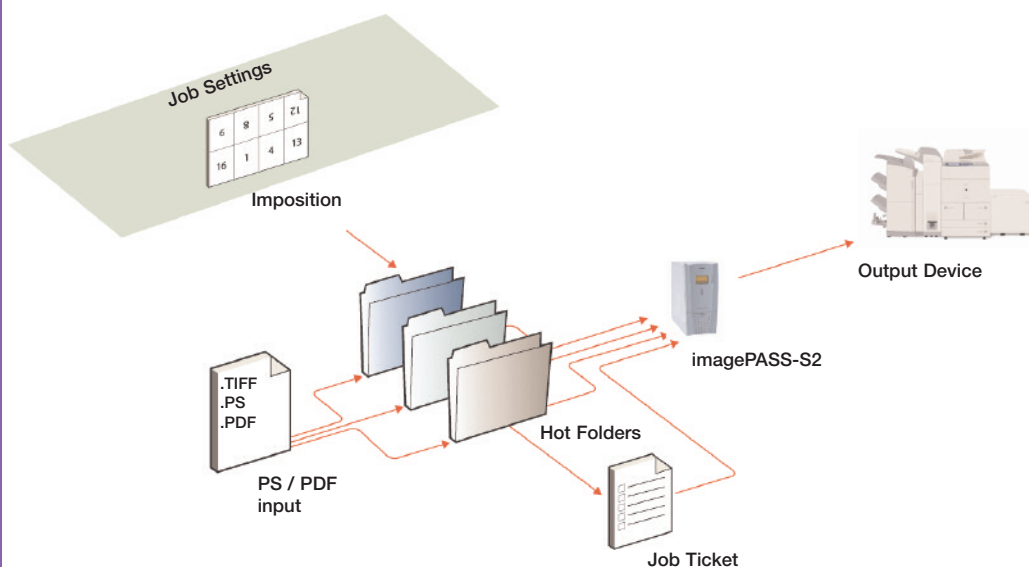
The Hot Folders utility enhances productivity by automating the job submission process and reducing errors caused by mistakes in the job setup. Documents can be printed via drag-and-drop or print-to-file, providing users with optional methods of printing to a print engine.

Hot Folders also cuts down on repetitive workflows for faster, error-free printing by enabling users to work beyond their normal levels of expertise, even on complex jobs. The PDF to PostScript® converter can convert any PDF 1.2-1.6 document to PostScript before submitting to the server, enabling support of newer PDF versions, as well as transparency for the imagePASS server.

VIRTUAL PRINTERS

Virtual Printers gives users a method of printing to the imagePASS that allows administrators to predefine settings to configure redundant print jobs, reduce repetitive steps, and streamline workflow for faster, error-free printing. Administrators can use virtual printers to centrally manage and configure printers as well as enter files with preconfigured settings to automate job submission and shorten turnaround times. Because relevant settings can be preserved by lockable constraints, with Virtual Printers administrators can also ensure that print processes conform to organizational standards.

Hot Folders



IMPOSE*

Enhancing efficiency for complete print jobs

REDUCES TIME AND ERRORS

Impose is an intuitive WYSIWYG solution designed for production environments. The robust tool set delivers a fast, automated approach to time-consuming and tedious tasks that leave operators open to errors.

EFFICIENT DOCUMENT ASSEMBLY

Impose extends the driver-based imposition capabilities offered by Booklet Maker. It allows users to edit and assemble documents on the imagePASS before RIPping for final output. These features include editing without modifying native files, adding or deleting pages, and the ability to do a preflight check for potential errors.

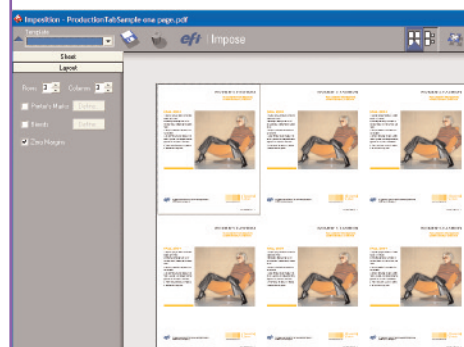
IMPOSITION FOR COMPLEX DOCUMENTS

Raster Preview allows operators to view thumbnail and full-size previews of raster data (post-RIP) for the imposition layout. The ability to preview raster data on-screen or preview and print at the same time provides a late-stage proofing and control point before submitting a job to print production.

INCREASED PRODUCTIVITY

The solution's productivity features streamline workflow in busy production operations and leverage automation, helping to reduce errors. Users can:

- Create unlimited user-definable imposition templates to streamline the imposition process and eliminate repetitive tasks.
- Quickly and easily view thumbnails and full-screen previews of actual page content in the imposition signature.
- Leverage the imagePASS controller's Hot Folder utility to automatically impose documents using imposition templates.
- Manage production of imposed jobs with mixed media requirements.
- Start cutting, sorting, and packing before a job has finished printing.



Impose Zero Margins

SPECIFICATIONS

Hardware

- Intel® Celeron® D Processor
 - 2.8GHz
 - 256+MB DDR SDRAM
 - 80GB Hard Drive
 - CD-ROM

Utilities

- Driver
 - Windows® Edition
 - Macintosh Edition
- WebTools™

Video Interface Card

- RIPChips™
- ECT Compression for flexible compression ratios and visually lossless image quality

Operating System

- Linux

imagePASS Options

- Hot Folders/Virtual Printers
- Impose
- 256MB RAM

Networking/Connectivity

- Simultaneous Auto-switching Protocols
- EtherTalk® II
- TCP/IP
- Novell® IPX

Autosensing Ports

- RJ-45 for On-Board 10/100/1000Base-T and 10/100Base-T
- Automatic IP Configuration

SNMP Printing Support

- AppleTalk®
- Pserver
- SMB (Peer-to-Peer)
- LPD

Safety

- CE Mark
- CSA
- TUV/GS
- UL
- CB Scheme
- RoHS

EMC

- EN55022 Part B (CE Marked)
- FCC Class B
- VCCI II

Power Supply and Consumption

- Auto-switching 90–135/180–265VAC, 47–63Hz
- 6A @ 115VAC; 3A @ 230VAC

Dimensions (H x W x D)

- 15.5" x 7.5" x 16"
393.7mm x 190.5mm x 406.4mm

Note: Supported Canon devices include imageRUNNER 7105/7095/7086/5075/5065/5055 models

Canon
*image*ANYWARE

Command WorkStation, RIPChips, and WebTools are trademarks of Electronics For Imaging, Inc. PostScript is a registered trademark or trademark of Adobe Systems Incorporated in the United States and/or other countries. Macintosh, AppleTalk, and EtherTalk are registered trademarks of Apple Computer, Inc. Windows is a registered trademark of Microsoft Corporation in the United States and/or other countries. Intel and Celeron are trademarks or registered trademarks of Intel Corporation or its subsidiaries in the United States and/or other countries. Novell is a registered trademark of Novell, Inc. in the United States and other countries. CANON and IMAGEPASS are registered trademarks of Canon Inc. in the United States and may also be registered trademarks or trademarks in other countries. IMAGEANYWARE is a trademark of Canon. All referenced product names and other marks are trademarks of their respective owners.

Specifications and availability subject to change without notice.
©2007 Canon U.S.A., Inc. All rights reserved.

1-800-OK-CANON
www.usa.canon.com

Canon U.S.A., Inc.
One Canon Plaza
Lake Success, NY 11042