

FAX-EB15

FAX-EB10

PARTS

CATALOG

REVISION 0

FAX-EB15	H12-2063	230V	EC
FAX-EB15	H12-2073	230V	EC
FAX-EB10	H12-2083	230V	EC
FAX-EB10	H12-2093	230V	EC
TELEPHONE 7	H12-3784	230V	UK
TELEPHONE 7	H12-3786	230V	HUN/POL
TELEPHONE 7	H12-3787	230V	CZO/LAT
TELEPHONE 7	H12-3796	230V	SLO
TELEPHONE 7	H12-3797	230V	S.A.

Canon

APR. 2001

HY8-30AN-000

Application

This manual has been issued by Canon Inc. for qualified persons to learn technical theory, installation, maintenance, and repair of products. This manual covers all localities where the products are sold. For this reason, there may be information in this manual that does not apply to your locality.

Corrections

This manual may contain technical inaccuracies or typographical errors due to improvements or changes in products. When changes occur in applicable products or in the content of this manual, Canon will release technical information as the need arises. In the event of major changes in the contents of this manual over a long or short period, Canon will issue a new editions of this manual.

The following paragraph does not apply to any countries where such provisions are inconsistent with local law.

Trademarks

The product names and company names described in this manual are the registered trademarks of the individual companies.

Copyright

This manual is copyrighted with all rights reserved. Under the copyright laws, this manual may not be copied, reproduced or translated into another language, in whole or in part, without the written consent of Canon Inc.

Copyright © 2001 by Canon Inc.

CANON INC.

Consumer Imaging Products Quality Assurance Dept. 1

5-1 Hakusan 7-Chome, Toride-city, Ibaraki 302-8501, Japan

DTP System

The data contained on this manual were created using Windows 95 computers.

Document creation and page layout were performed using Adobe® PageMaker® 6.5.

Logos and illustrations were created using Adobe® Illustrator® 9.0J.

I. CONTENTS

1. ILLUSTRATION INDEX
2. PARTS LAYOUT & PARTS LIST
3. TOOL
4. LUBRICATIONS
5. NUMERICAL INDEX

II. ABOUT THIS MANUAL

1. ILLUSTRATION INDEX

For illustration index, the parts layout illustrations in this parts catalog are listed in abbreviated form in order of illustration number to identify the pages they appear on. To find an illustration of a part, see the ILLUSTRATION INDEX.

2. PARTS LAYOUT & PARTS LIST

Parts layout illustration

a) Parts search

Find a part from the parts layout illustration and find its key number from the parts list to identify the part number and name.

Further, screws, nuts, washers, grip rings, pins and spacers are mentioned in the parts list.

Note: If parts have the same or similar shape but different specifications, their key number is assigned to several part numbers and names in the parts list.

b) Parts replacement procedure

The parts layout illustrations are arranged according to the disassembly procedure of the product. When a unit in the illustration can be disassemble further, a reference illustration page of the disassembly will be included.

Parts where grease is to be applied are displayed as "Lubrication". When replacing parts, or if grease has accidentally been wiped off, refer to "4". (Lubrications), and reapply the grease.

The letters (A , B etc.) in the illustration indicate the connection locations of cables and screws.

Parts list

a) FIGURE & KEY No.

The FIGURE & KEY No. column corresponds to the key numbers assigned to the parts in the parts layout illustration.

It also corresponds to the part locations printed on the PC board.

b) PART NUMBER

The PART NUMBER column gives the part numbers corresponding to the key numbers. To order a part, indicate the part number clearly.

Note: Parts marked NPN are not service parts.

c) RANK

The service parts with N in the RANK column are order parts.

d) QTY

The QTY column gives the number of parts in the corresponding components layout illustration.

e) DESCRIPTION

The DESCRIPTION column gives the part names in English.

To order a part, indicate the part name, too.

3. TOOL

This is a list of tools used for servicing products.

4. LUBRICATIONS

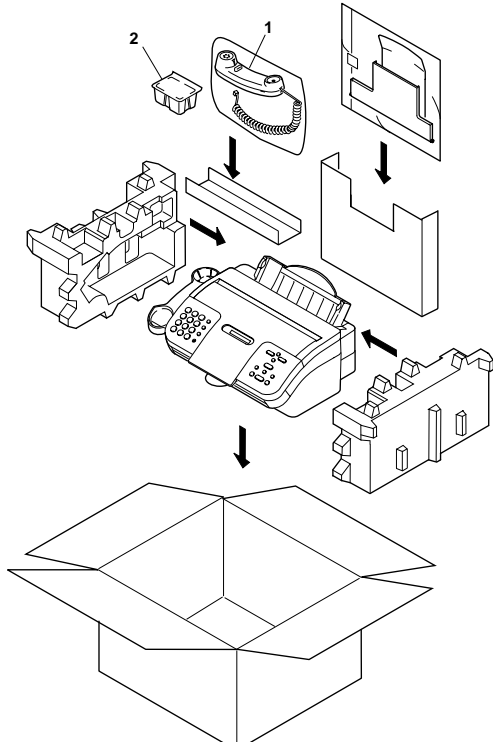
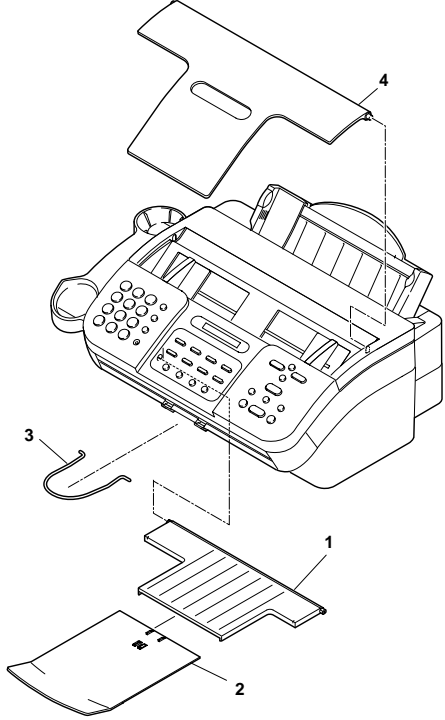
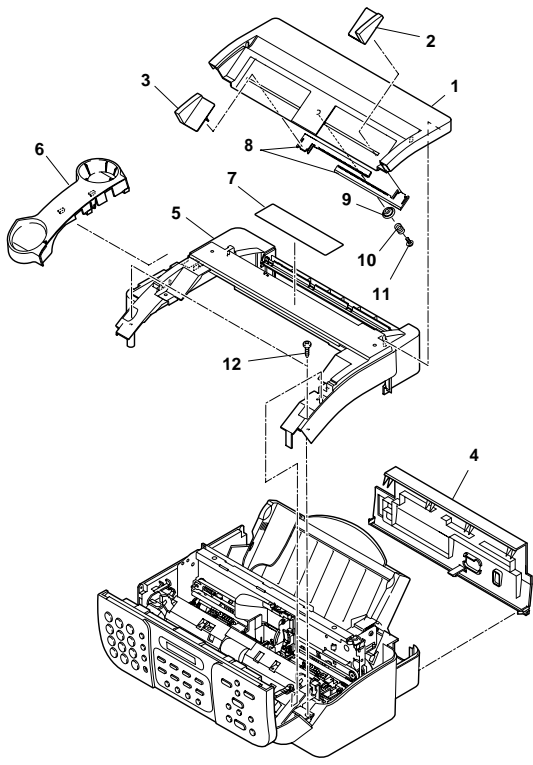
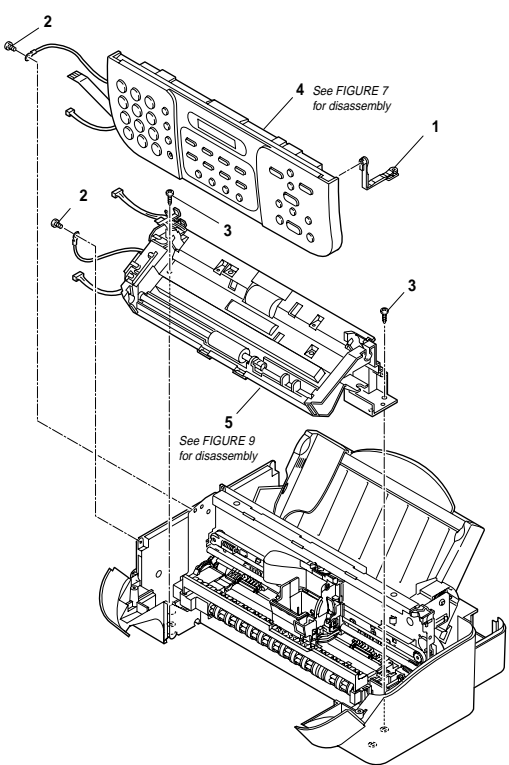
Where grease is to be applied in order to allow moving parts to work smoothly, and to increase conductivity, the type and amount of grease to be used will be mentioned.

5. NUMERICAL INDEX

All the parts listed in this parts catalog are arranged in order of part number. You can identify part locations and names from the NUMERICAL INDEX.

This page intentionally left blank

1. ILLUSTRATION INDEX

<p>FIGURE 1 PACKAGE CONTENTS</p>	<p>See Page 2-1</p>	<p>FIGURE 2 TRAY</p>	<p>See Page 2-3</p>
			
<p>FIGURE 3 EXTERNAL COVERS</p>	<p>See Page 2-5</p>	<p>FIGURE 4 SCANNER & OPERATION PANEL</p>	<p>See Page 2-7</p>
			

<p>FIGURE 5 PRINT ASS'Y</p>	<p>See Page 2-9</p>	<p>FIGURE 6 CIRCUIT BOARDS & POWER SUPPLY</p>	<p>See Page 2-11</p>
<p>FIGURE 7 OPERATION PANEL & ADF UPPER</p>	<p>See Page 2-13</p>	<p>FIGURE 8 ADF UPPER</p>	<p>See Page 2-15</p>

FIGURE 9 ADF LOWER (1)

See Page
2-17

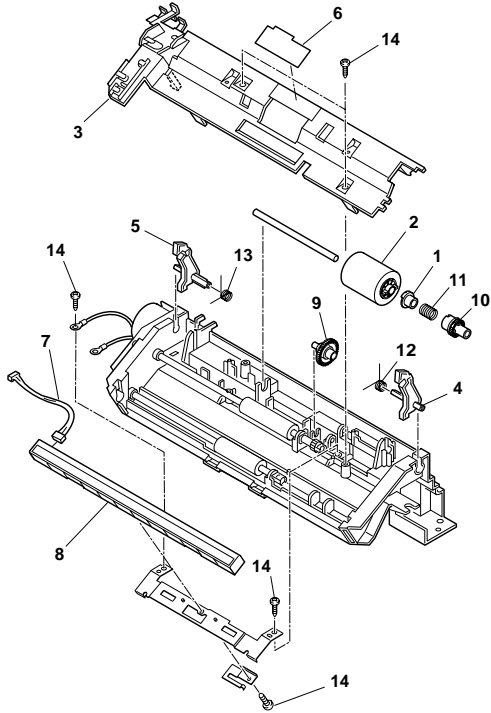


FIGURE 10 ADF LOWER (2)

See Page
2-19

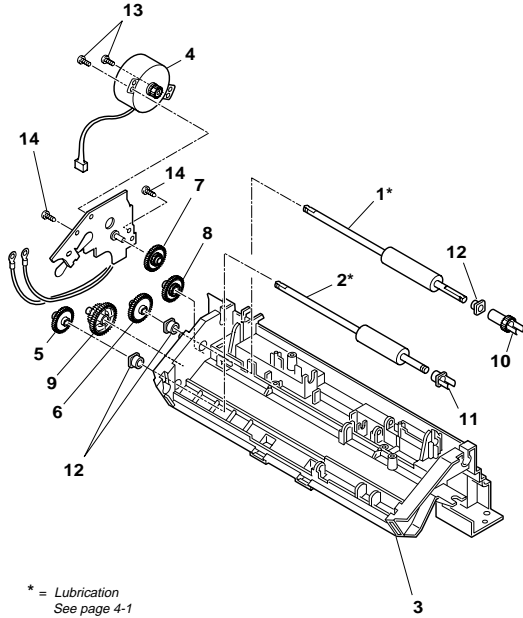


FIGURE 11 AUTO SHEET FEEDER & PCNT BOARD

See Page
2-21

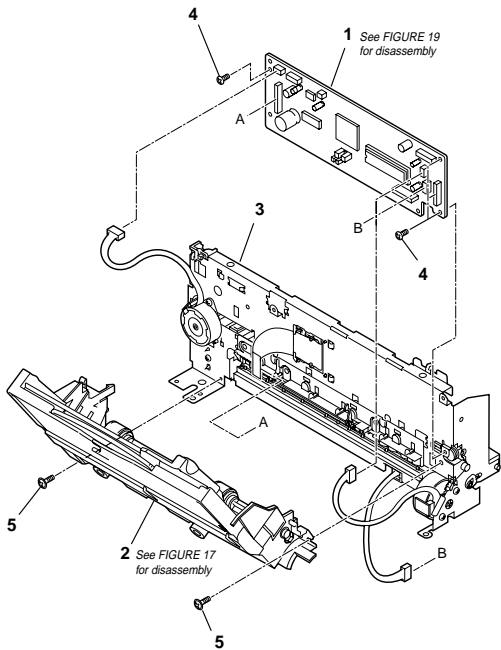


FIGURE 12 CARRIAGE SECTION

See Page
2-23

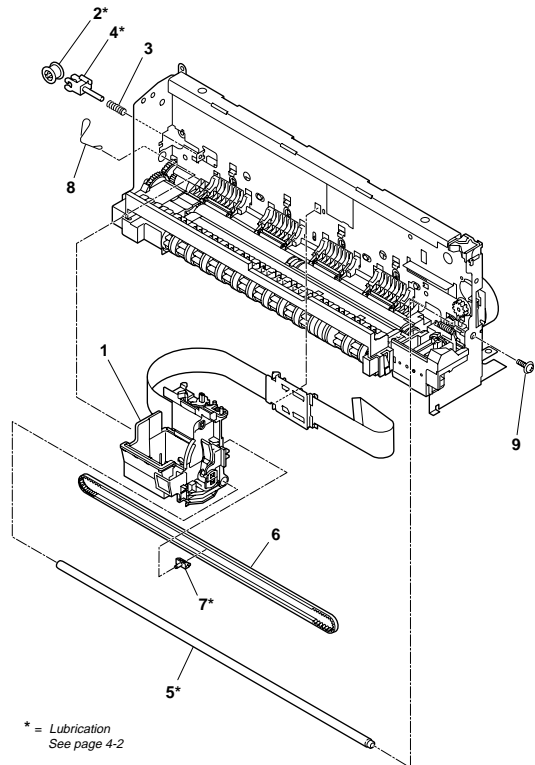


FIGURE 13 MOTORS

See Page
2-25

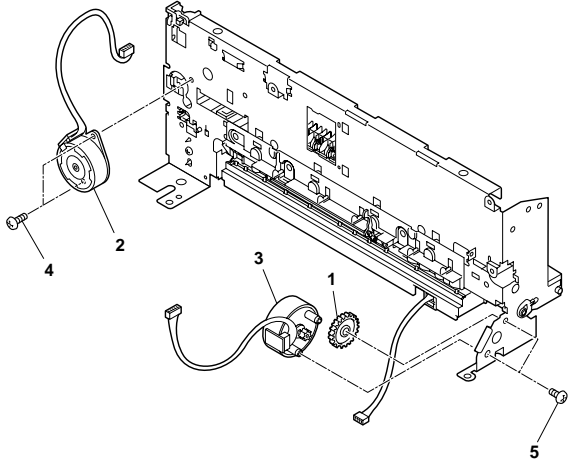
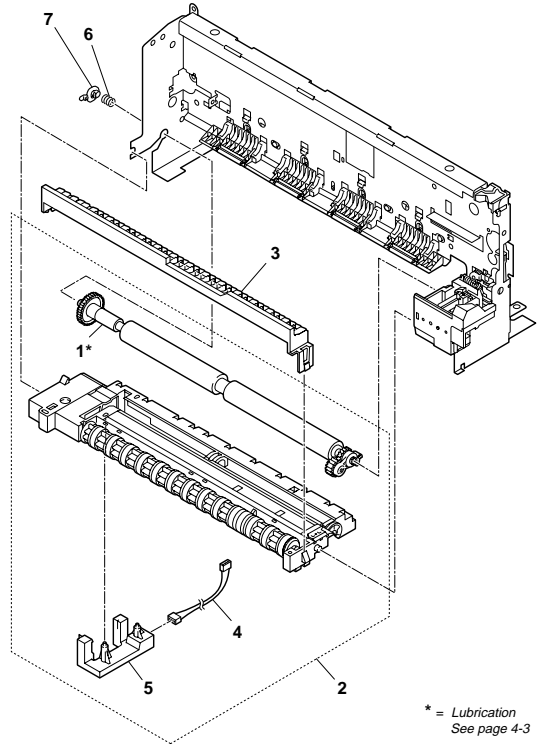


FIGURE 14 PAPER FEED SECTION

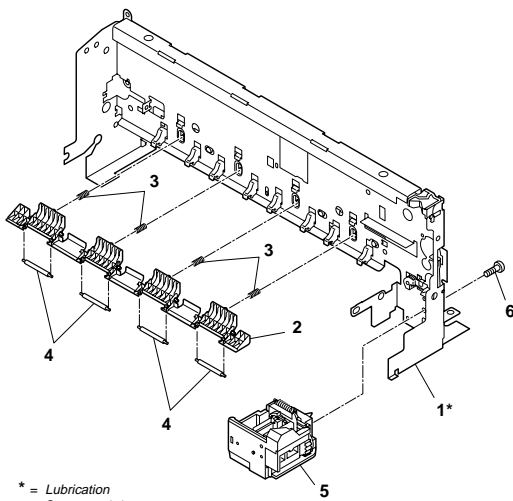
See Page
2-27



* = Lubrication
See page 4-3

FIGURE 15 PURGE UNIT

See Page
2-29



* = Lubrication
See page 4-4

FIGURE 16 PRINT FRAME

See Page
2-31

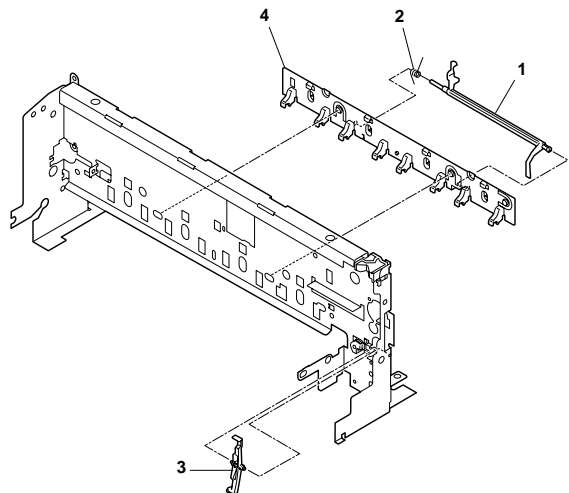


FIGURE 17 AUTO SHEET FEEDER

See Page
2-33

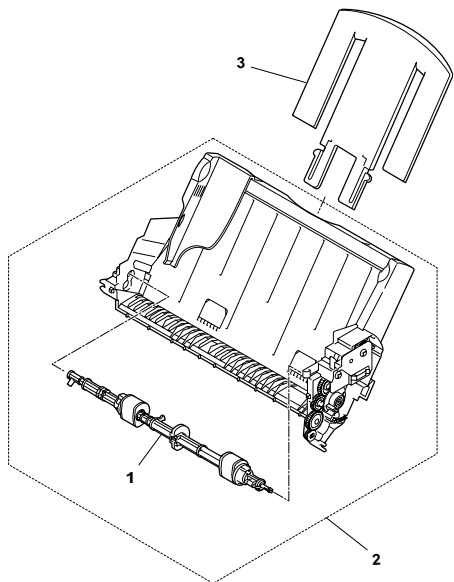


FIGURE 18 SCNT BOARD

See Page
2-35

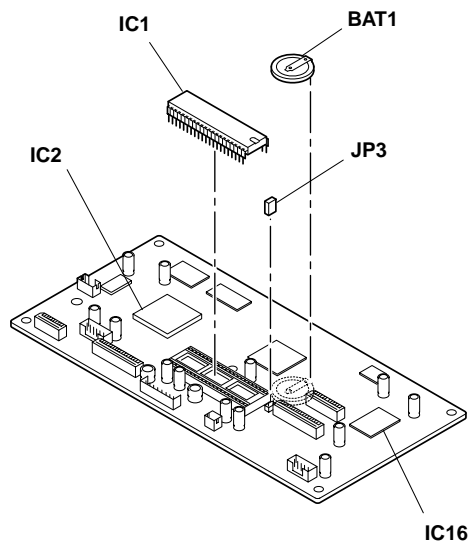


FIGURE 19 PCNT BOARD

See Page
2-37

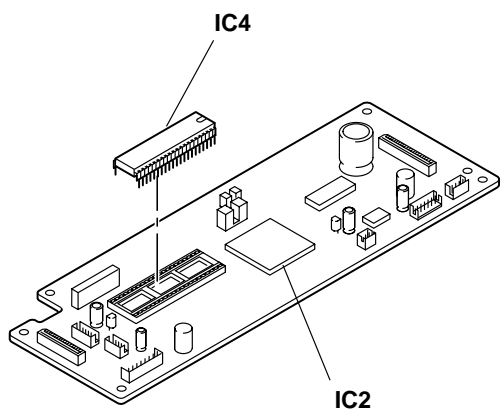
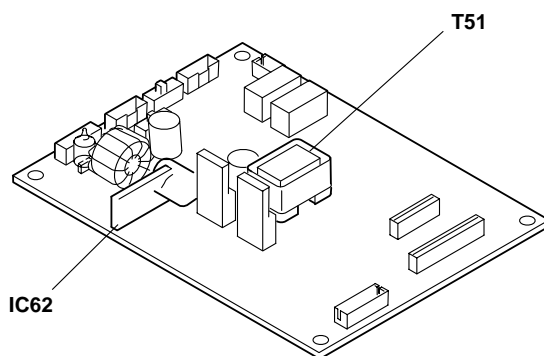
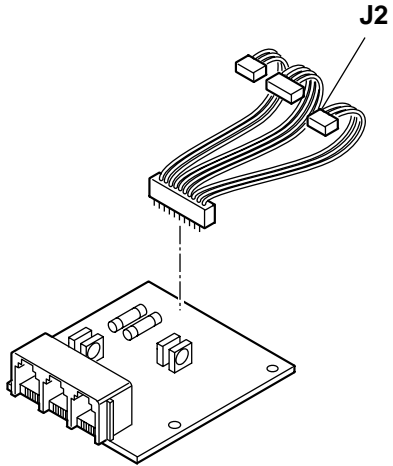
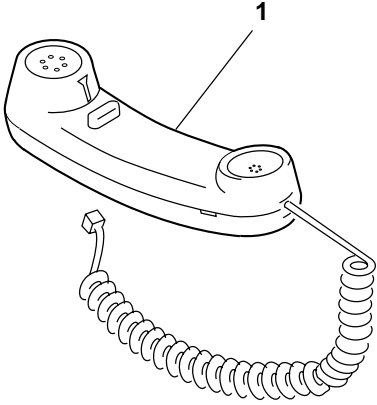
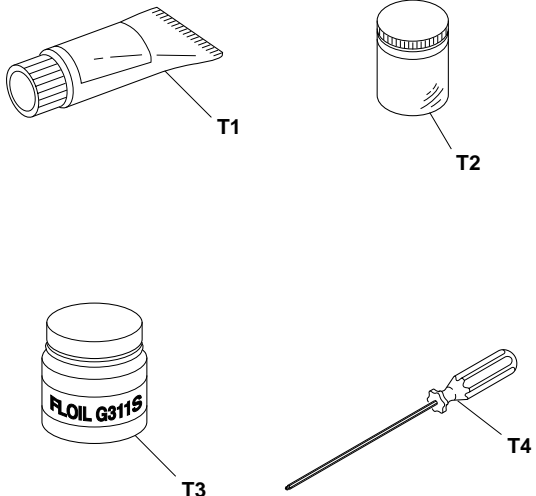


FIGURE 20 NCU BOARD

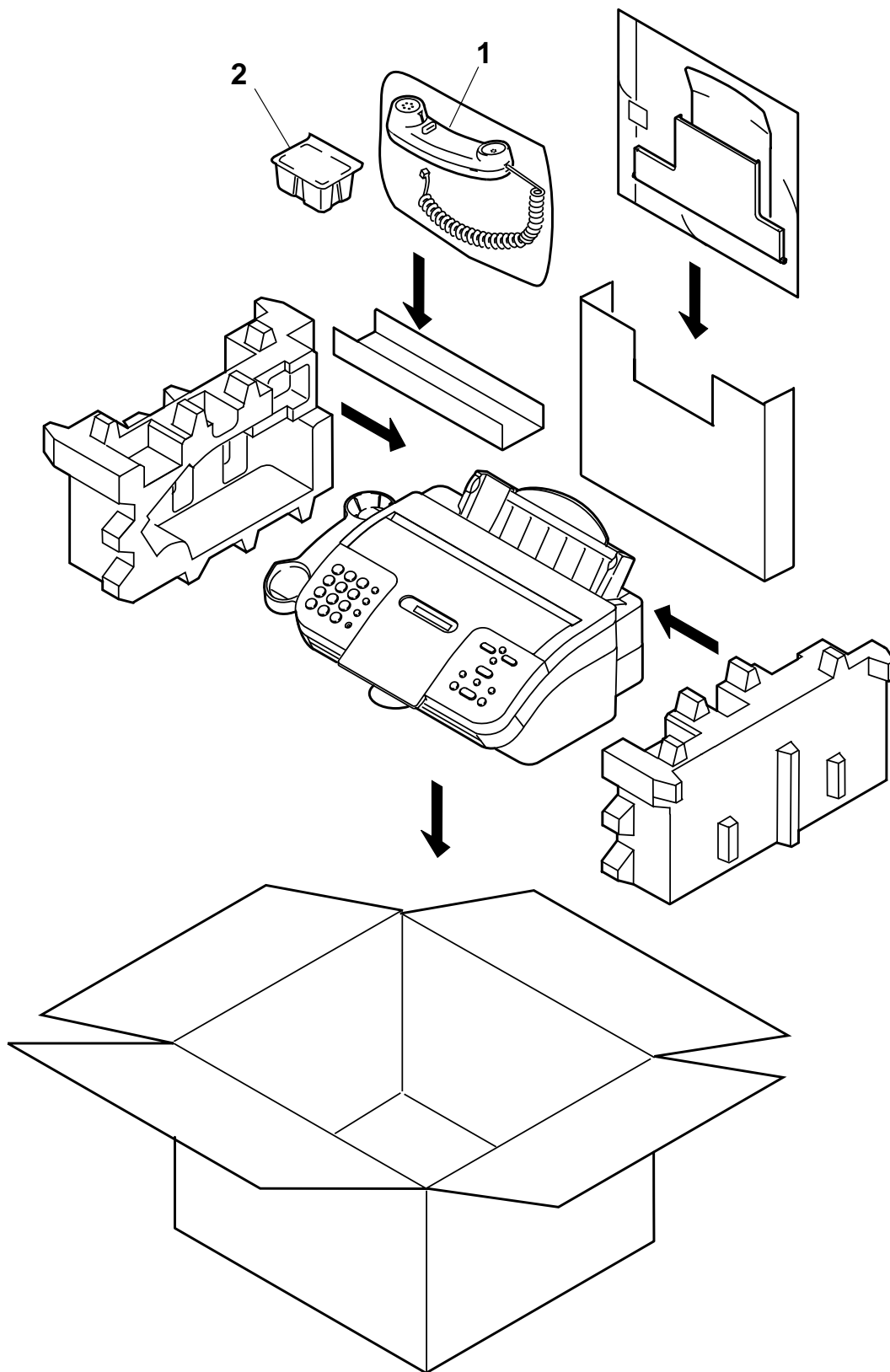
See Page
2-39



<p>FIGURE 21 MODULAR JACK BOARD</p>	<p>See Page 2-41</p>	<p>FIGURE 22 TELEPHONE 7</p>	<p>See Page 2-43</p>
 <p>The diagram shows a modular jack board with several ports. A cable with a multi-wire shielded connector, labeled J2, is shown being inserted into one of the ports. A dashed line indicates the alignment of the cable with the port.</p>		 <p>The diagram shows a telephone handset, labeled 1, with a coiled cord. The handset has a receiver and a transmitter, both with four small circular openings. A small button is visible on the side of the handset.</p>	
<p>FIGURE 23 TOOLS</p>	<p>See Page 3-1</p>		
 <p>The diagram shows four tools labeled T1, T2, T3, and T4. T1 is a tube of grease. T2 is a small jar. T3 is a jar labeled FLOIL G3115. T4 is a screwdriver.</p>			

2. PARTS LAYOUT & PARTS LIST

FIGURE 1 PACKAGE CONTENTS



FAX-EB15/EB10 2.PARTS LAYOUT & PARTS LIST

FIGURE & KEY No.	PART No.	R A N K	Q T Y	DESCRIPTION	REMARKS
1 - 1	HH7-2530-000		1	HANDSET UNIT	FAX-EB15/EB10(H12-2063/2083)
2	NPN		1	BX-20 BLACK BJ CARTRIDGE	

FIGURE 2 TRAY

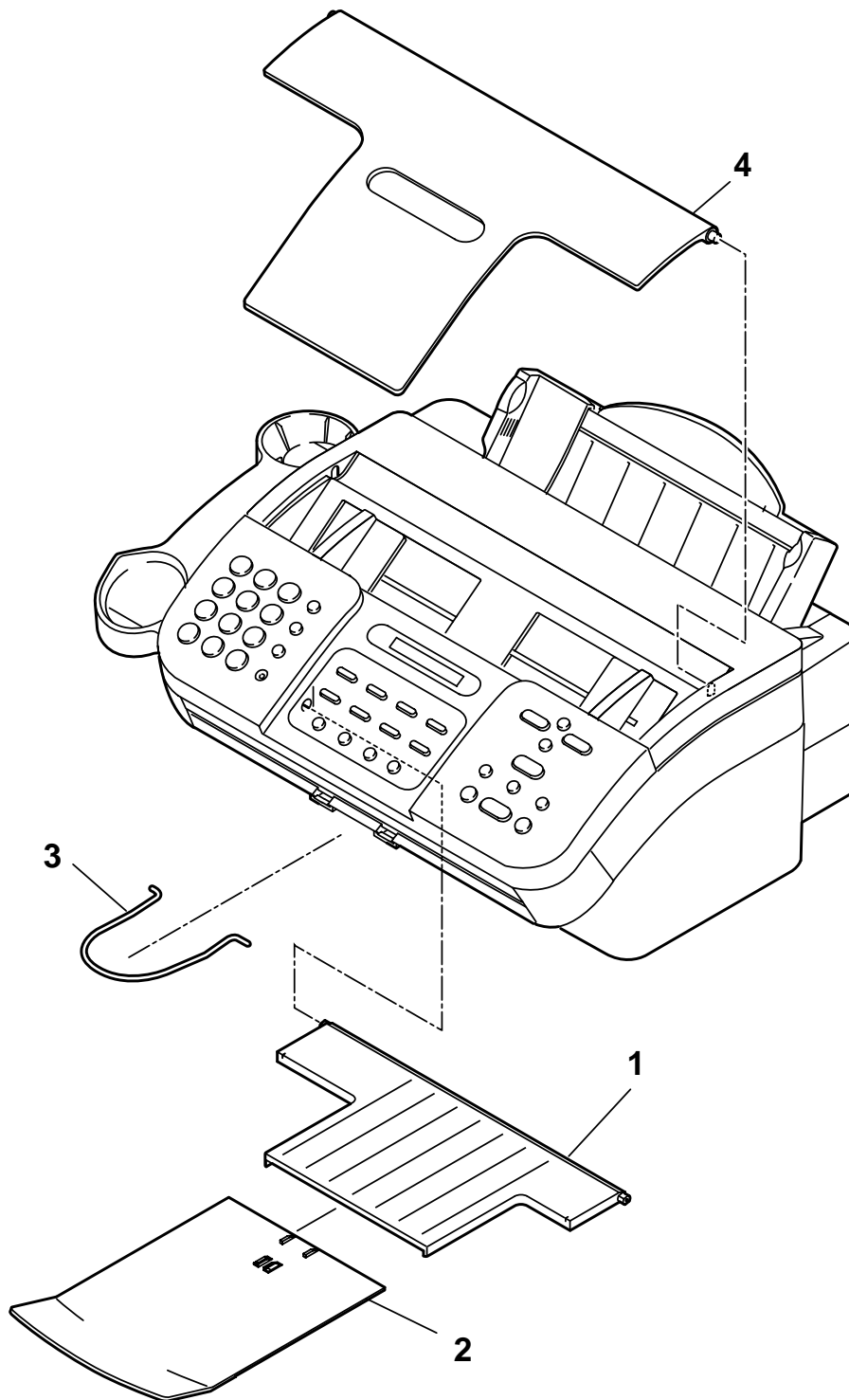


FIGURE 3 EXTERNAL COVERS

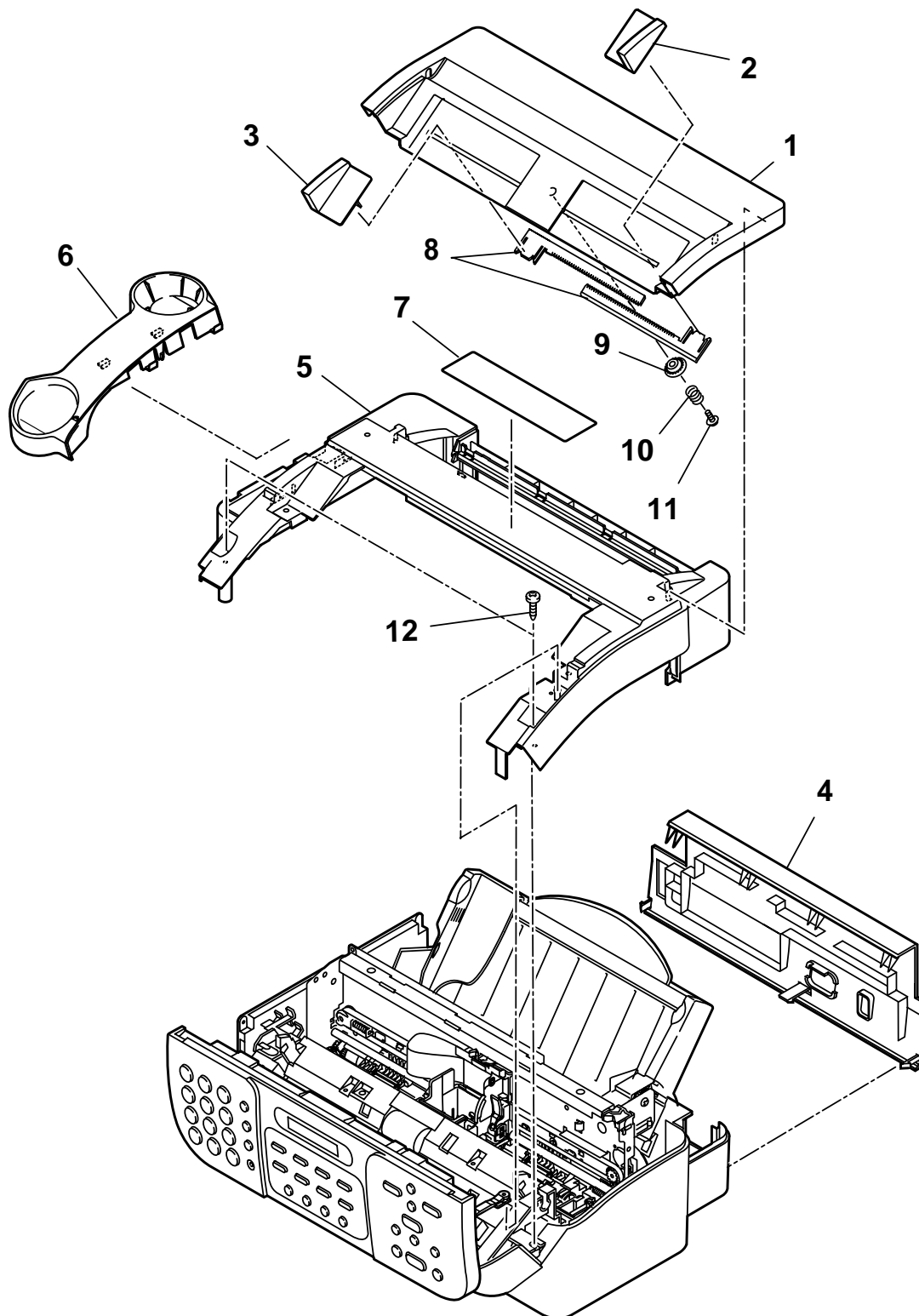


FIGURE & KEY No.	PART No.	RANK	QTY	DESCRIPTION	REMARKS
3 - 1	HB1-4873-000		1	COVER, PRINTER	
2	HB1-4874-000		1	GUIDE, DOCUMENT, RIGHT	
3	HB1-4875-000		1	GUIDE, DOCUMENT, LEFT	
4	HB1-4882-000		1	COVER, REAR	
5	HB1-4891-000		1	COVER, UPPER	
6	HB1-4892-000		1	HOLDER, HANDSET REST	
7	HB1-4897-000		1	LABEL, CARTRIDGE SET	
8	HB1-4953-000		2	RACK	
9	HS5-0172-000		1	PINION, 18T	
10	HS5-2094-000		1	SPRING	
11	XA9-0283-000		1	SCREW, TP, PH3X6	
12	XB4-7300-809		2	SCREW, TAP, BINDING HEAD, M3X8	

FIGURE 4 SCANNER & OPERATION PANEL

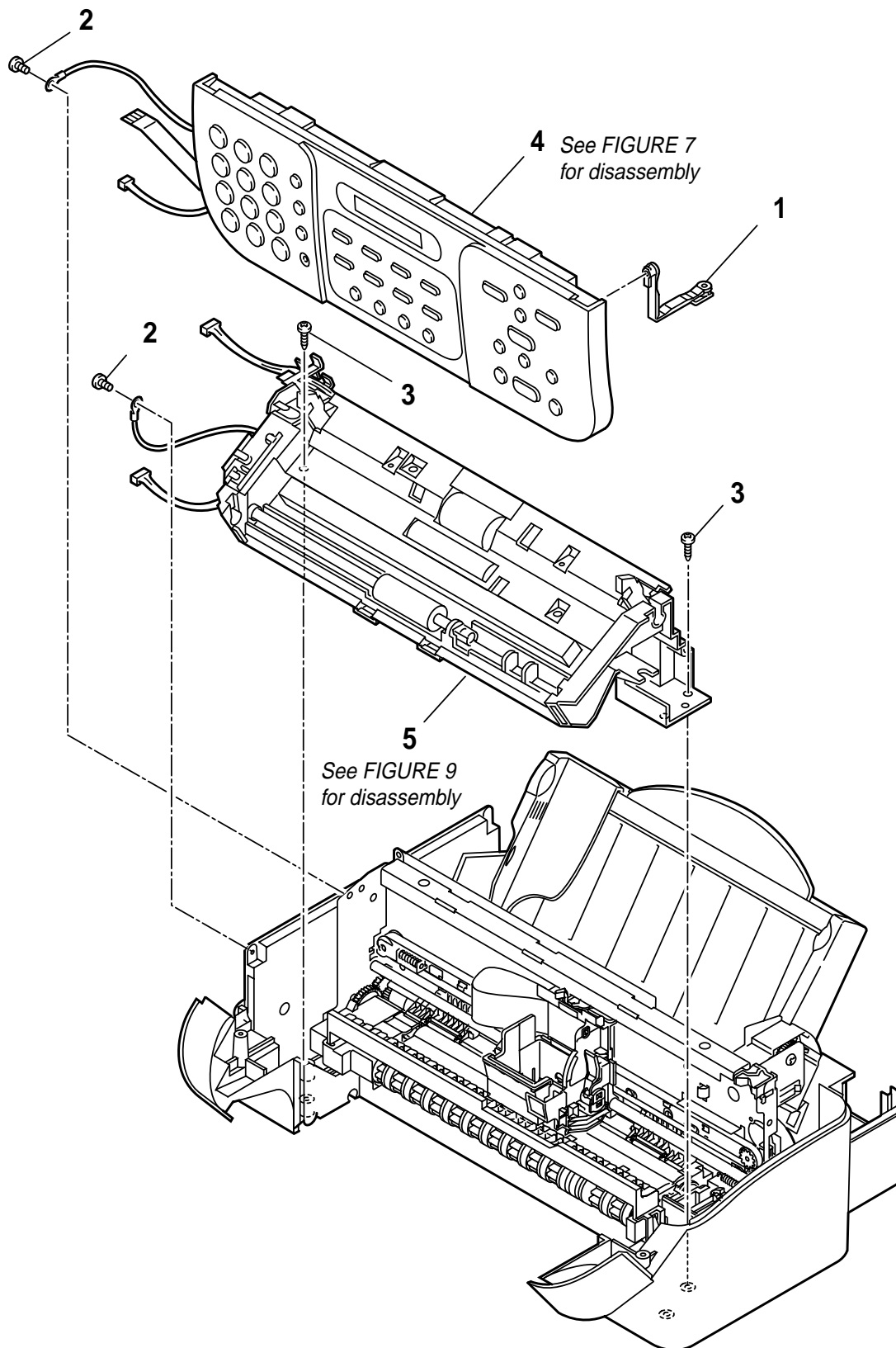
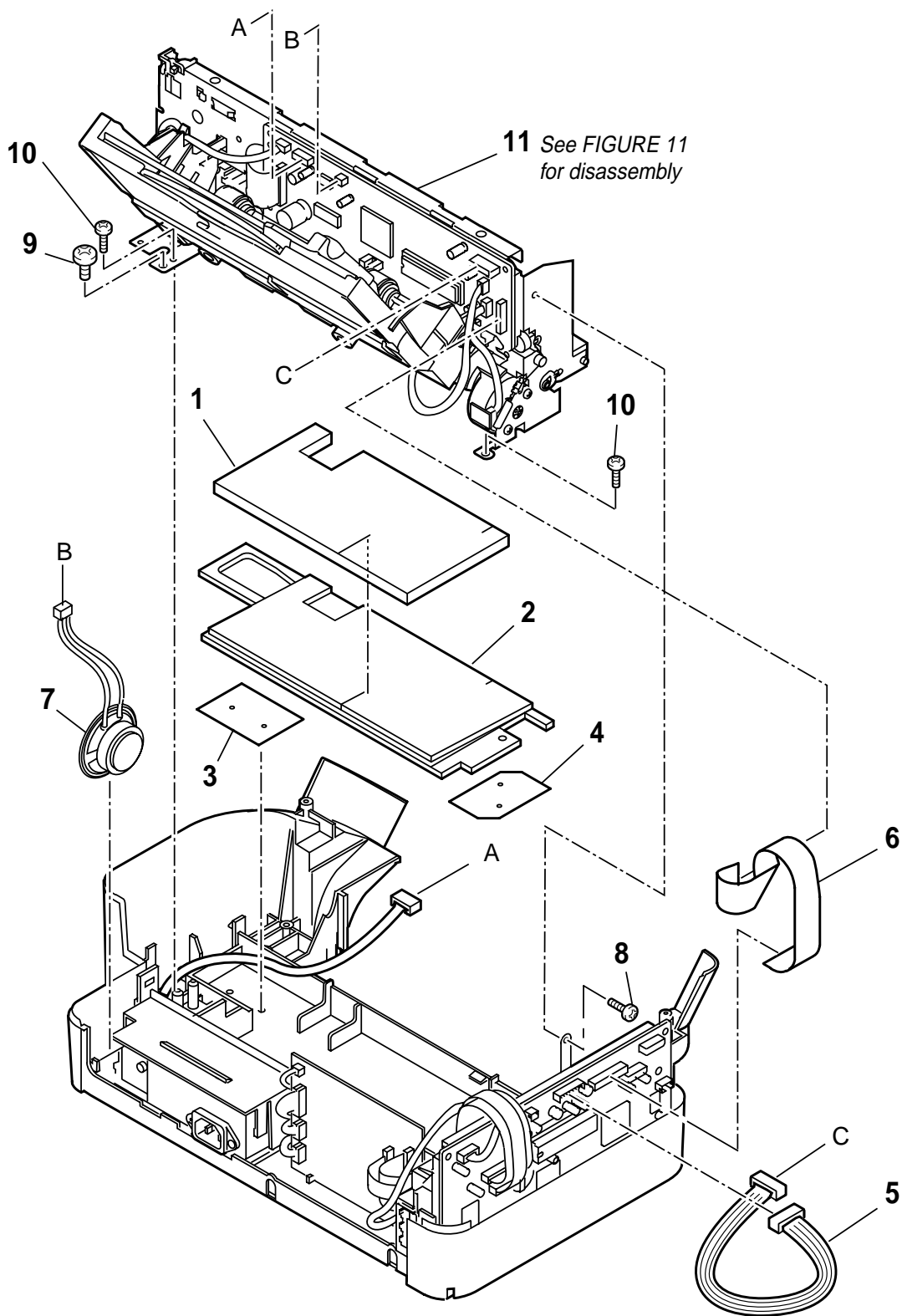


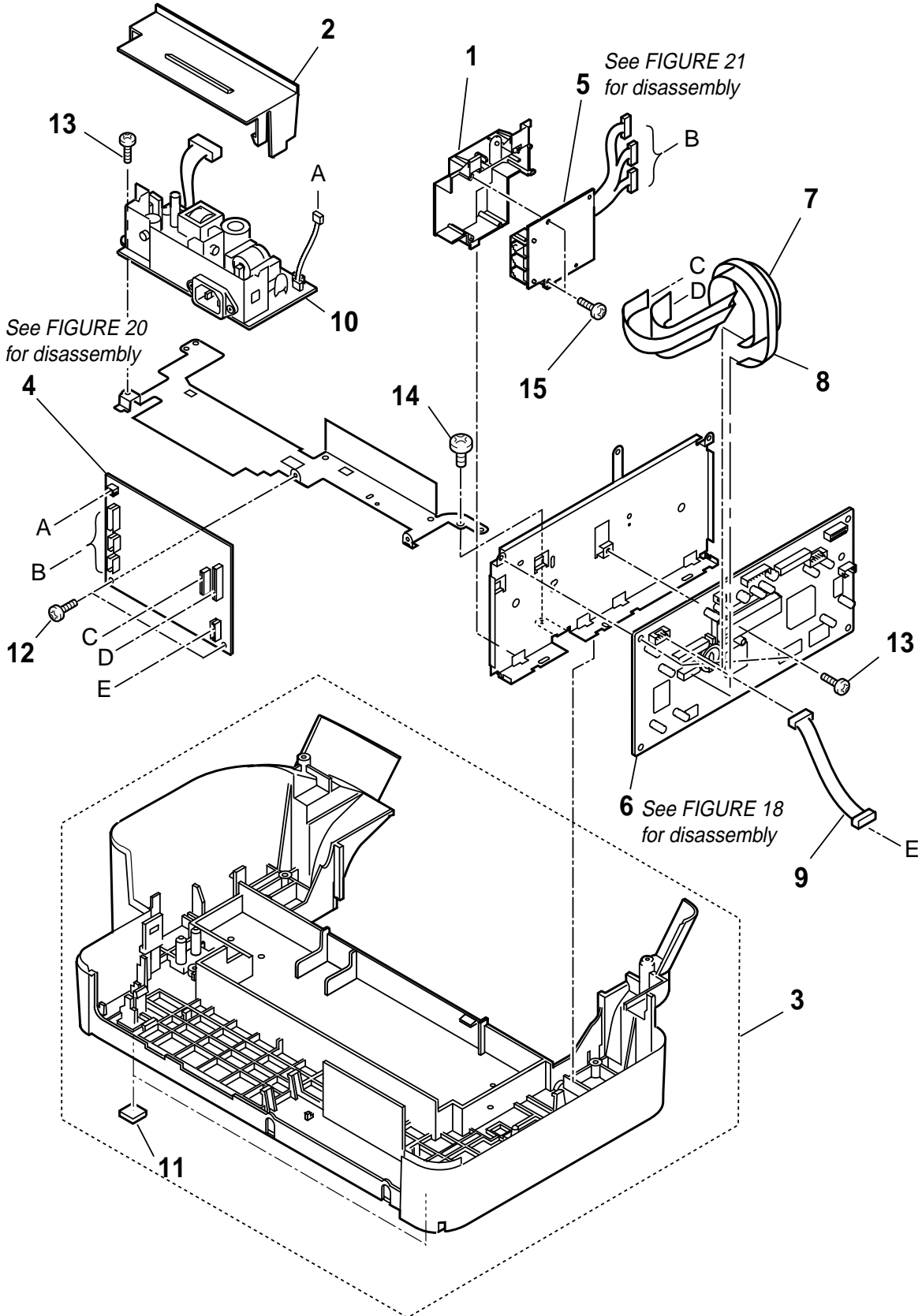
FIGURE 5 PRINT ASS'Y



FAX-EB15/EB10 2.PARTS LAYOUT & PARTS LIST

FIGURE & KEY No.	PART No.	R A N K	Q T Y	DESCRIPTION	REMARKS
5 - 1	HB1-4886-000		1	ABSORBER, WASTE INK	
2	HB1-4887-000		1	ABSORBER, WASTE INK	
3	HB1-4888-000		1	ABSORBER, WASTE INK	
4	HB1-4966-000		1	ABSORBER, WASTE INK	
5	HH2-3063-000		1	CABLE WITH CONNECTOR, 8P	
6	HH2-3064-000		1	CABLE, FLAT, 25P	
7	HH7-2373-000		1	SPEAKER UNIT	
8	XB2-7300-607		1	SCREW, M3X6	
9	XB2-7400-607		1	SCREW, TOOTHED WASHER, M4X6	
10	XB4-7300-809		2	SCREW, TAP, BINDING HEAD, M3X8	
11	NPN		1	PRINT & ASF ASS'Y	

FIGURE 6 CIRCUIT BOARDS & POWER SUPPLY



FAX-EB15/EB10 2.PARTS LAYOUT & PARTS LIST

FIGURE & KEY No.	PART No.	RANK	QTY	DESCRIPTION	REMARKS
6 - 1	HB1-4884-000	N	1	COVER, MODULAR BOARD	
2	HB1-4885-000	N	1	COVER, POWER SUPPLY	
3	HF5-0625-000	N	1	MAIN FRAME ASS'Y	
4	HG5-2587-000		1	NCU BOARD ASS'Y	
5	HG5-2603-000		1	MODULAR JACK BOARD ASS'Y	
6	HG5-2604-000		1	SCNT BOARD ASS'Y	FAX-EB15
	HG5-2622-000		1	SCNT BOARD ASS'Y	FAX-EB10
7	HH2-3116-000		1	CABLE, FLAT, 23P	
8	HH2-3118-000		1	CABLE, FLAT, 14P	
9	HH2-3065-000		1	CABLE WITH CONNECTOR, 6P	
10	HH3-5367-000		1	POWER SUPPLY UNIT	
11	QB1-3593-000		2	FOOT, PRINTER	
12	XB1-2300-407		2	SCREW, BH3X4 (S)	
13	XB2-7300-607		3	SCREW, M3X6	
14	XB2-7400-607		1	SCREW, TOOTHED WASHER, M4X6	
15	XB4-7300-809		2	SCREW, TAP, BINDING HEAD, M3X8	

FIGURE 7 OPERATION PANEL & ADF UPPER

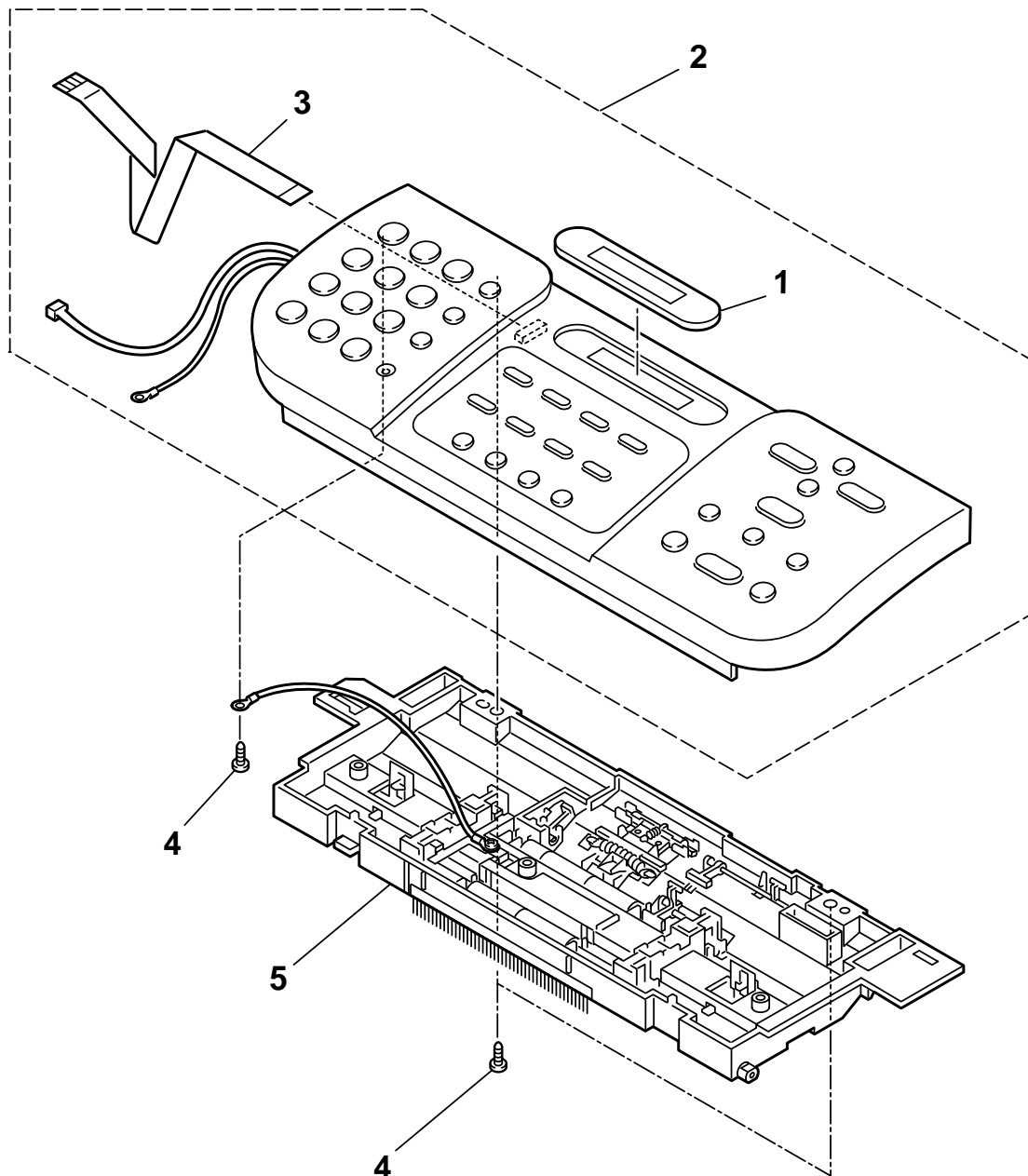


FIGURE 8 ADF UPPER

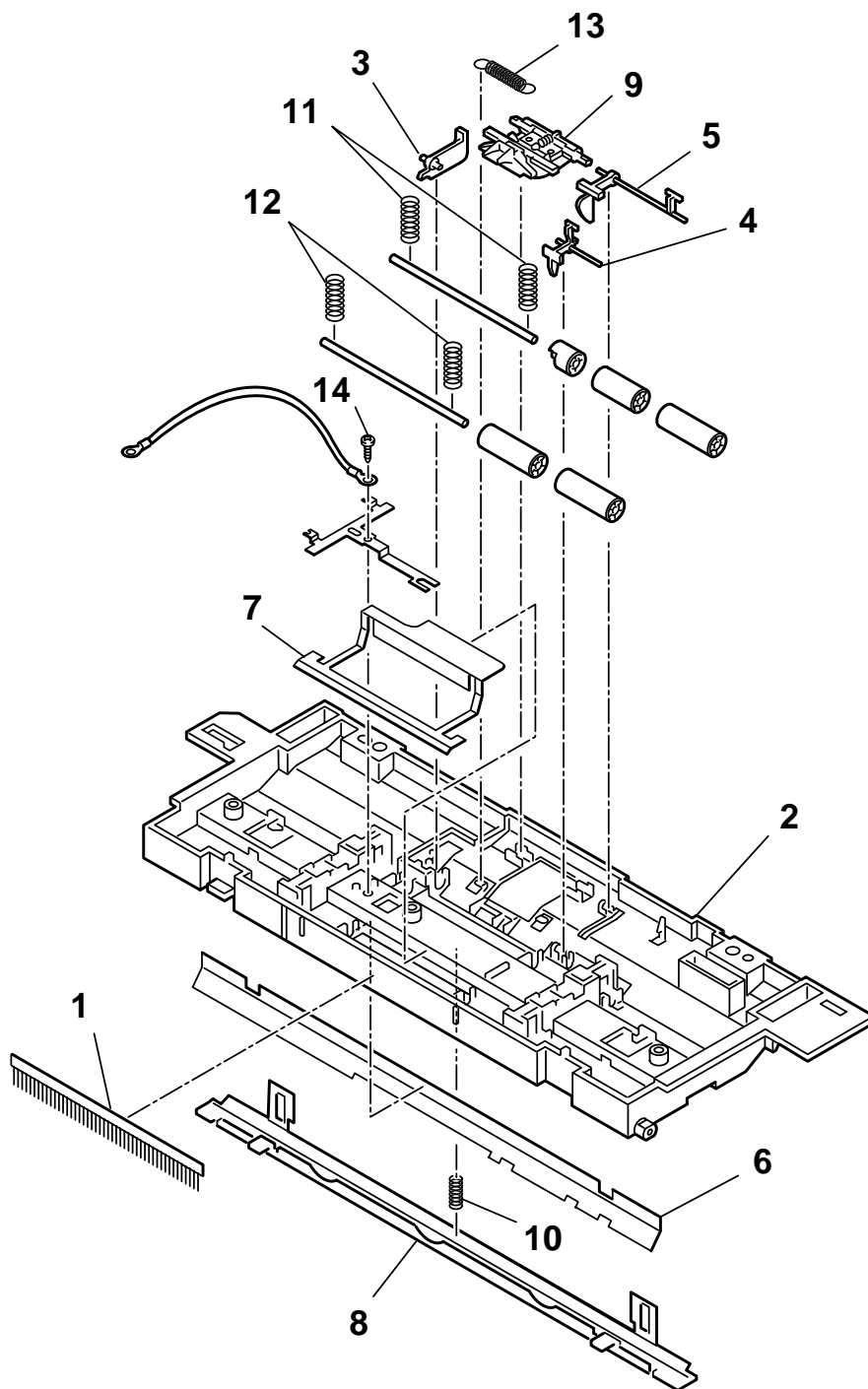


FIGURE & KEY No.	PART No.	RANK	QTY	DESCRIPTION	REMARKS
8 - 1	HB1-4072-000	N	1	BRUSH, STATIC DISCHARGE	
2	HB1-4898-000		1	FRAME, ADF, UPPER	
3	HB1-4903-000		1	STOPPER, DOCUMENT	
4	HB1-4906-000		1	ARM, DETECTION (DES)	
5	HB1-4907-000		1	ARM, DETECTION (DS)	
6	HB1-4964-000		1	SHEET, LIGHT SHIELD	
7	HB1-4965-000		1	SHEET	
8	HF5-0626-000		1	WHITE REFERENCE SHEET UNIT	
9	HG5-2609-000		1	SEPARATION GUIDE ASS'Y	
10	HS5-2170-000		1	SPRING, WHITE SHEET	
11	HS5-2234-000		2	SPRING	
12	HS5-2235-000		2	SPRING	
13	HS5-2239-000		1	SPRING, ADF	
14	XB4-7300-809		1	SCREW, TAP, BINDING HEAD, M3X8	

FIGURE 9 ADF LOWER (1)

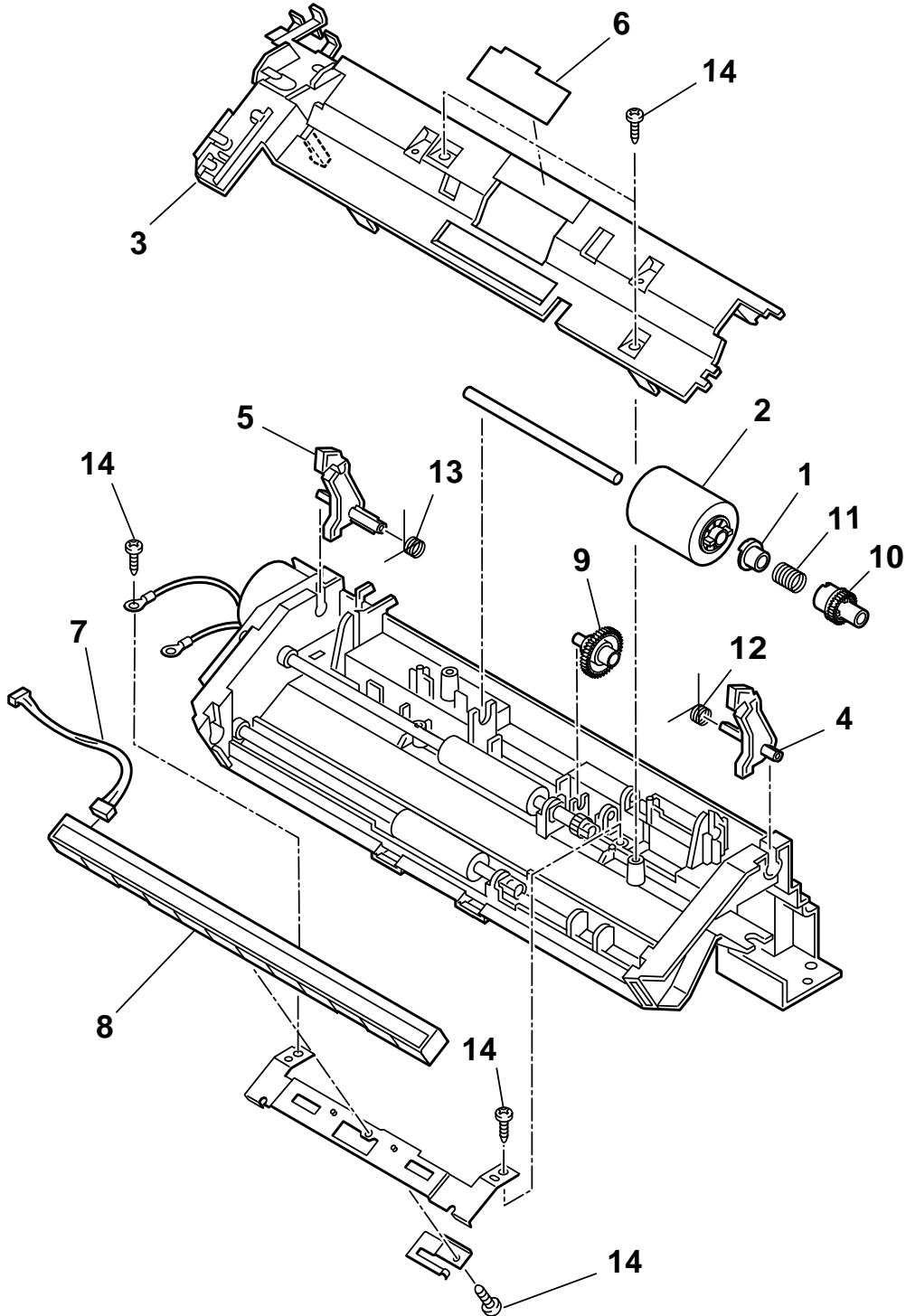


FIGURE & KEY No.	PART No.	RANK	QTY	DESCRIPTION	REMARKS
9 - 1	HB1-1779-000		1	SPACER	
2	HB1-4561-000		1	ROLLER, SEPARATION	
3	HB1-4928-000		1	COVER, ADF, LOWER	
4	HB1-4929-000		1	ARM, LOCK, RIGHT	
5	HB1-4930-000		1	ARM, LOCK, LEFT	
6	HB1-4969-000		1	SHEET, SEPARATION	
7	HH2-3062-000		1	CABLE WITH CONNECTOR, 7P	
8	HH7-2520-000		1	CONTACT SENSOR UNIT	
9	HS5-0335-000		1	GEAR, 31T/42T	
10	HS5-0342-000		1	GEAR, 32T	
11	HS5-2077-000		1	SPRING, CLUTCH	
12	HS5-2236-000		1	SPRING, TORSION	
13	HS5-2237-000		1	SPRING, TORSION	
14	XB4-7300-809		5	SCREW, TAP, BINDING HEAD, M3X8	

FIGURE 10 ADF LOWER (2)

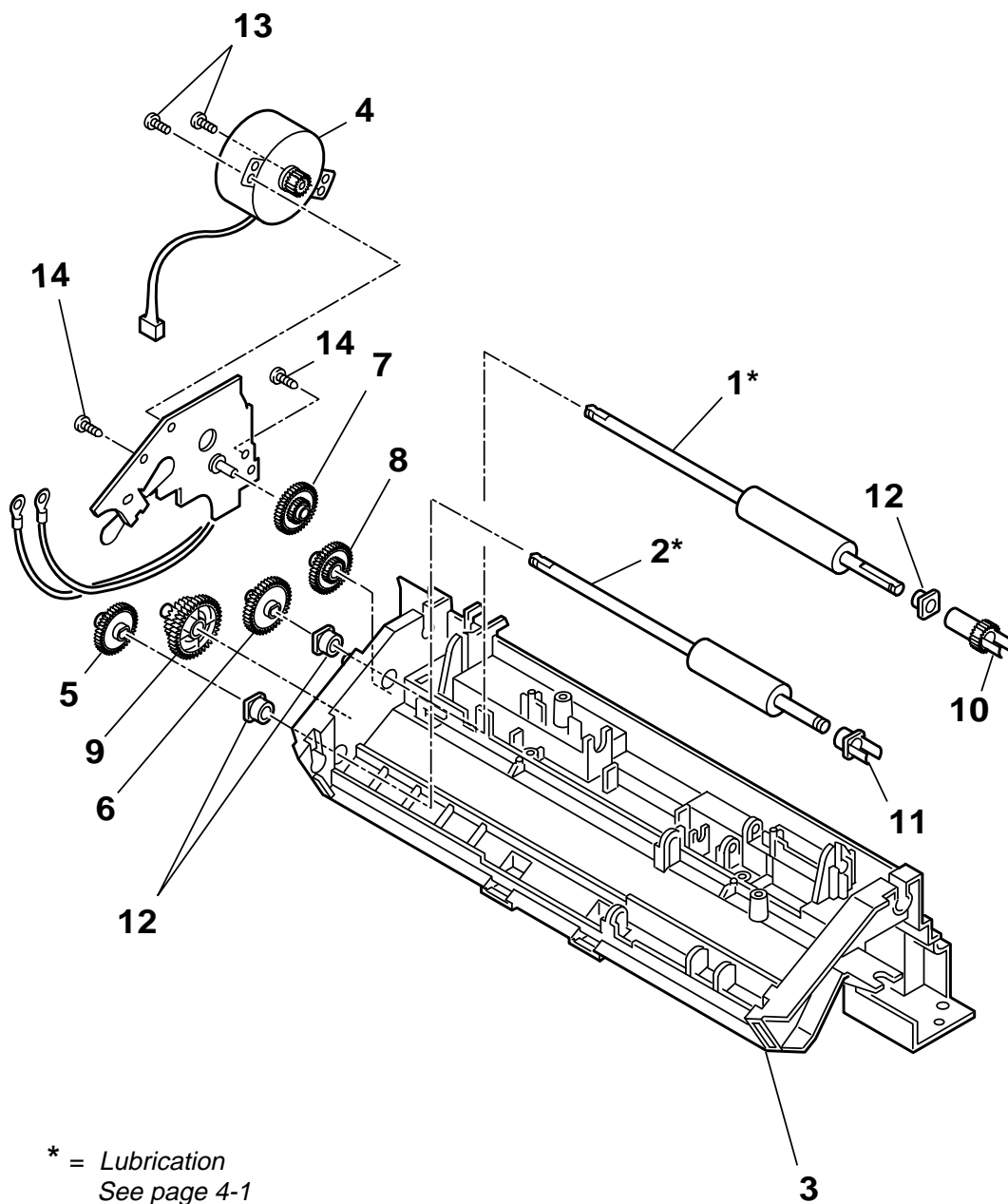


FIGURE & KEY No.	PART No.	RANK	QTY	DESCRIPTION	REMARKS
10 - 1	HB1-4926-000	N	1	ROLLER, DOCUMENT FEED	
2	HB1-4927-000		1	ROLLER, DOCUMENT EJECT	
3	HB1-4946-000		1	FRAME, ADF, LOWER	
4	HH7-2534-000		1	MOTOR, STEPPING, READER	
5	HS5-0333-000		1	GEAR, 36T	
6	HS5-0334-000		1	GEAR, 45T	
7	HS5-0336-000		1	GEAR, 19T/40T	
8	HS5-0337-000		1	GEAR, 19T/42T	
9	HS5-0340-000		1	GEAR, 39T/49T	
10	HS5-0341-000		1	GEAR, 19T	
11	HS5-1092-000		1	BUSHING	
12	HS5-1093-000		3	BUSHING	
13	XB1-2300-407		2	SCREW, BH3X4 (S)	
14	XB4-7300-809		2	SCREW, TAP, BINDING HEAD, M3X8	

FIGURE 11 AUTO SHEET FEEDER & PCNT BOARD

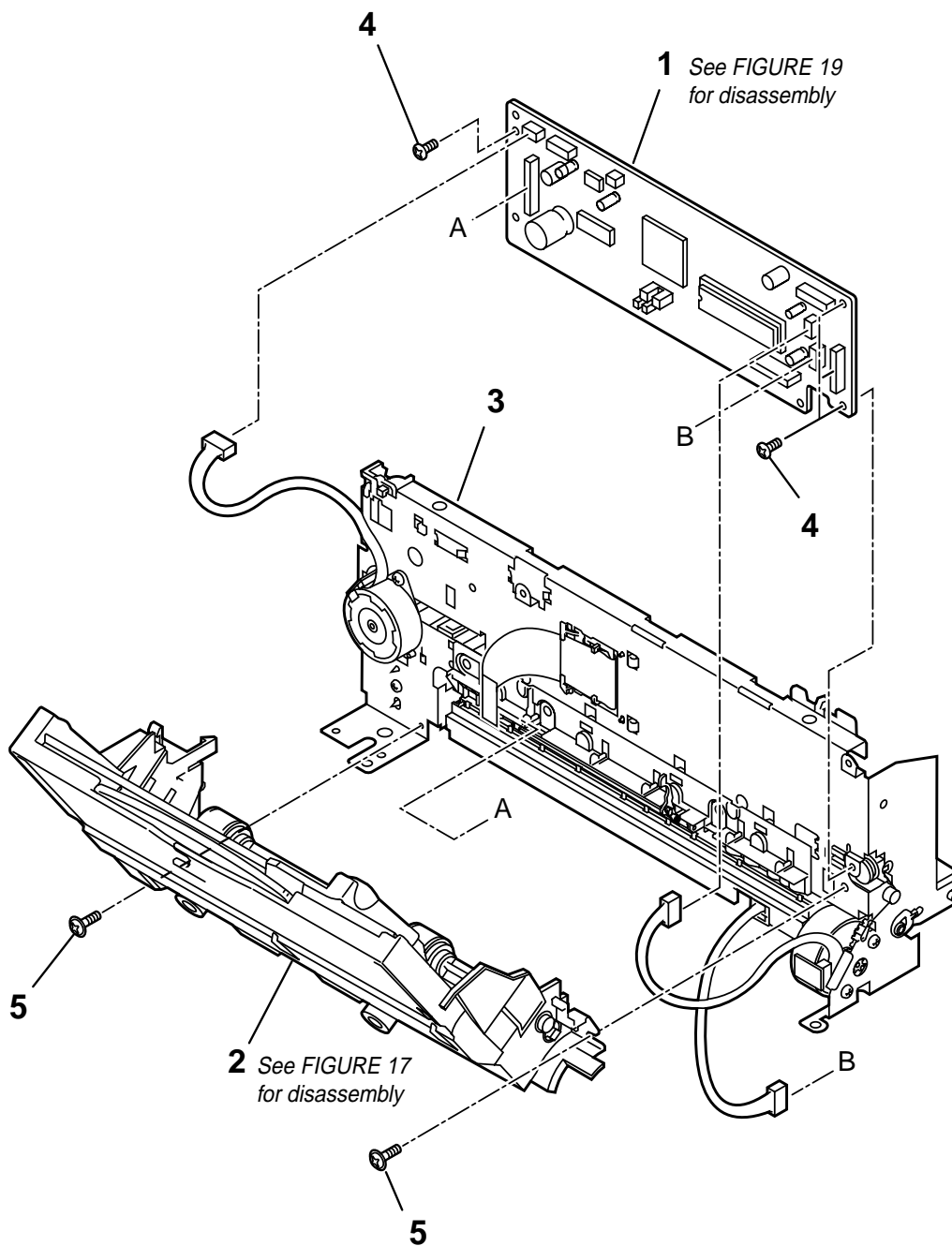


FIGURE 12 CARRIAGE SECTION

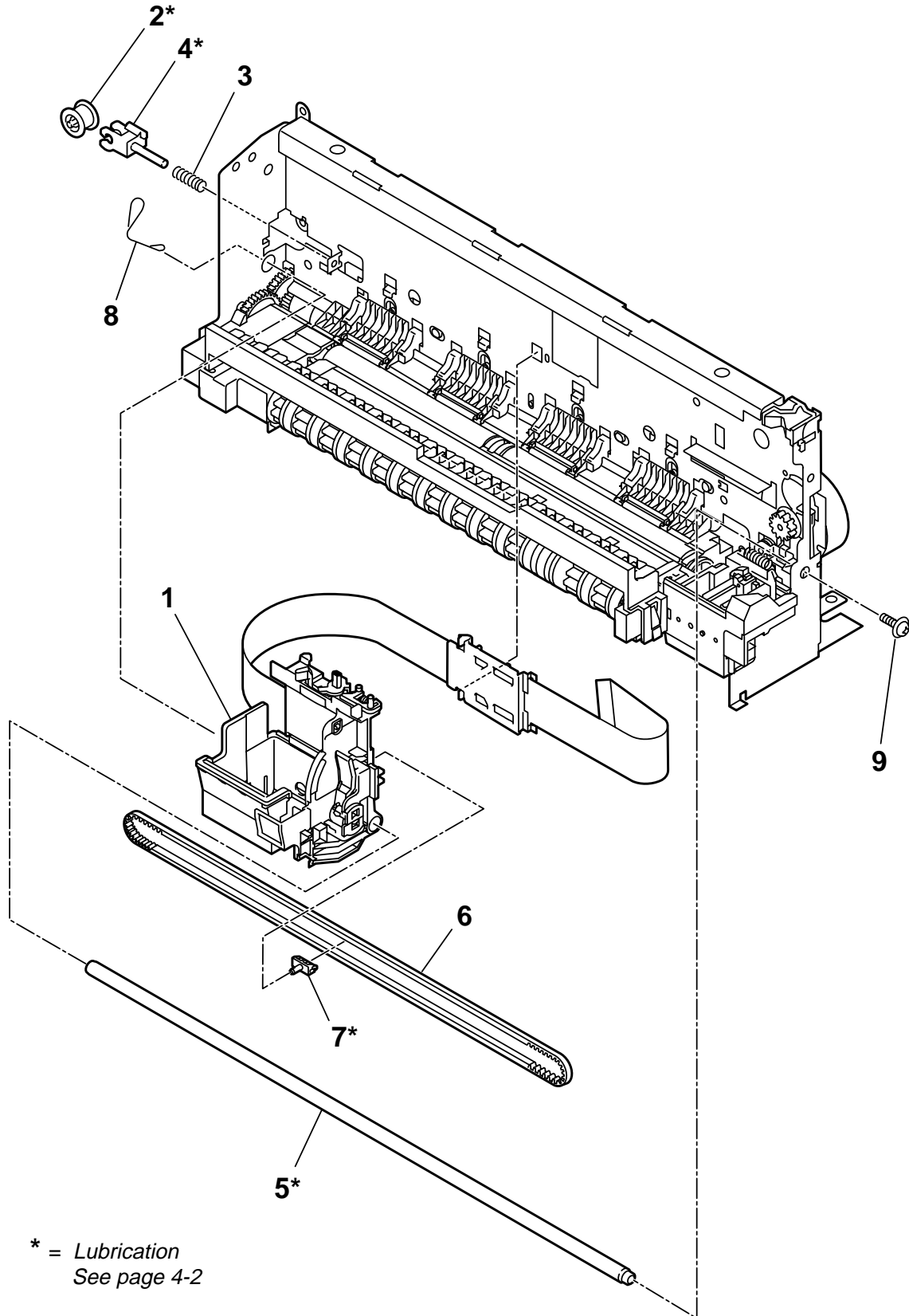


FIGURE 13 MOTORS

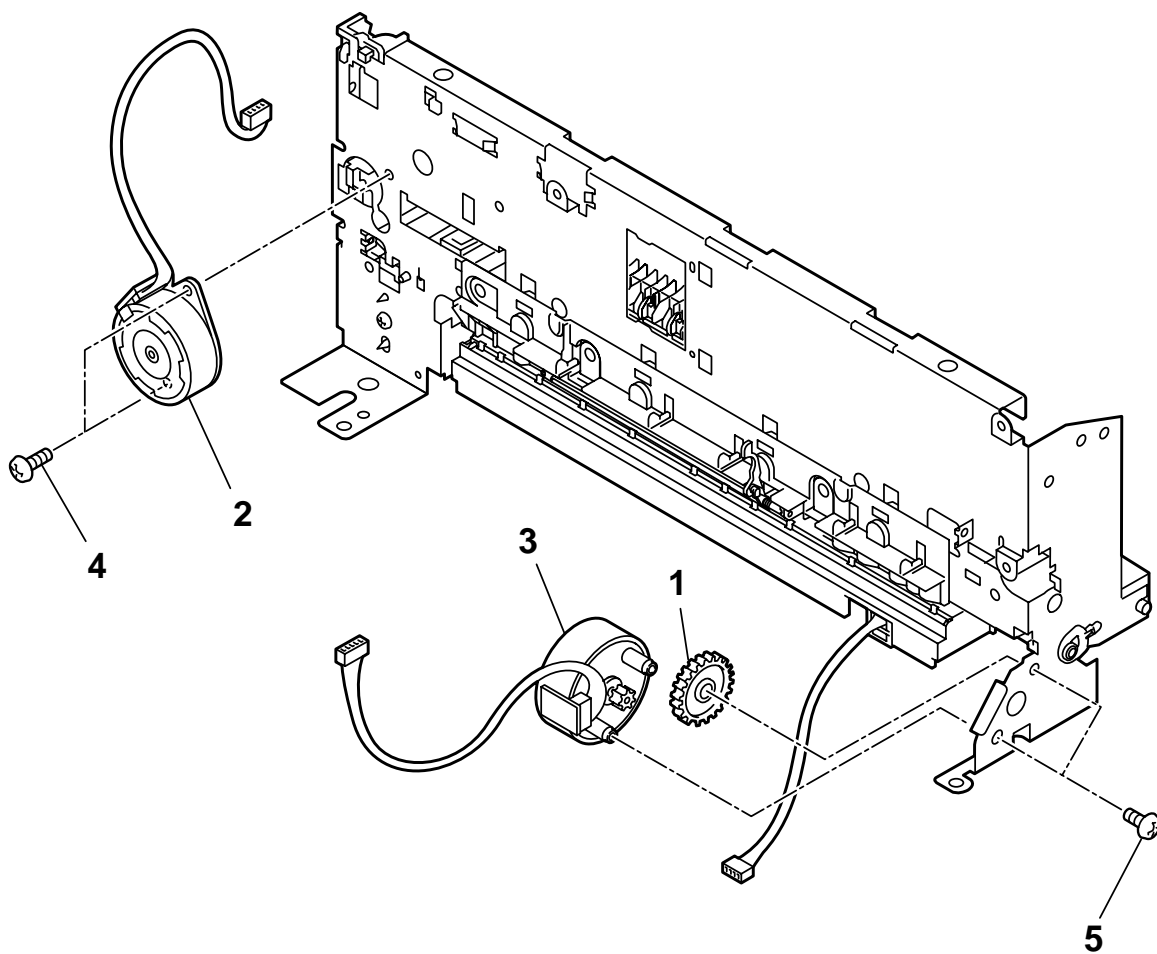


FIGURE 14 PAPER FEED SECTION

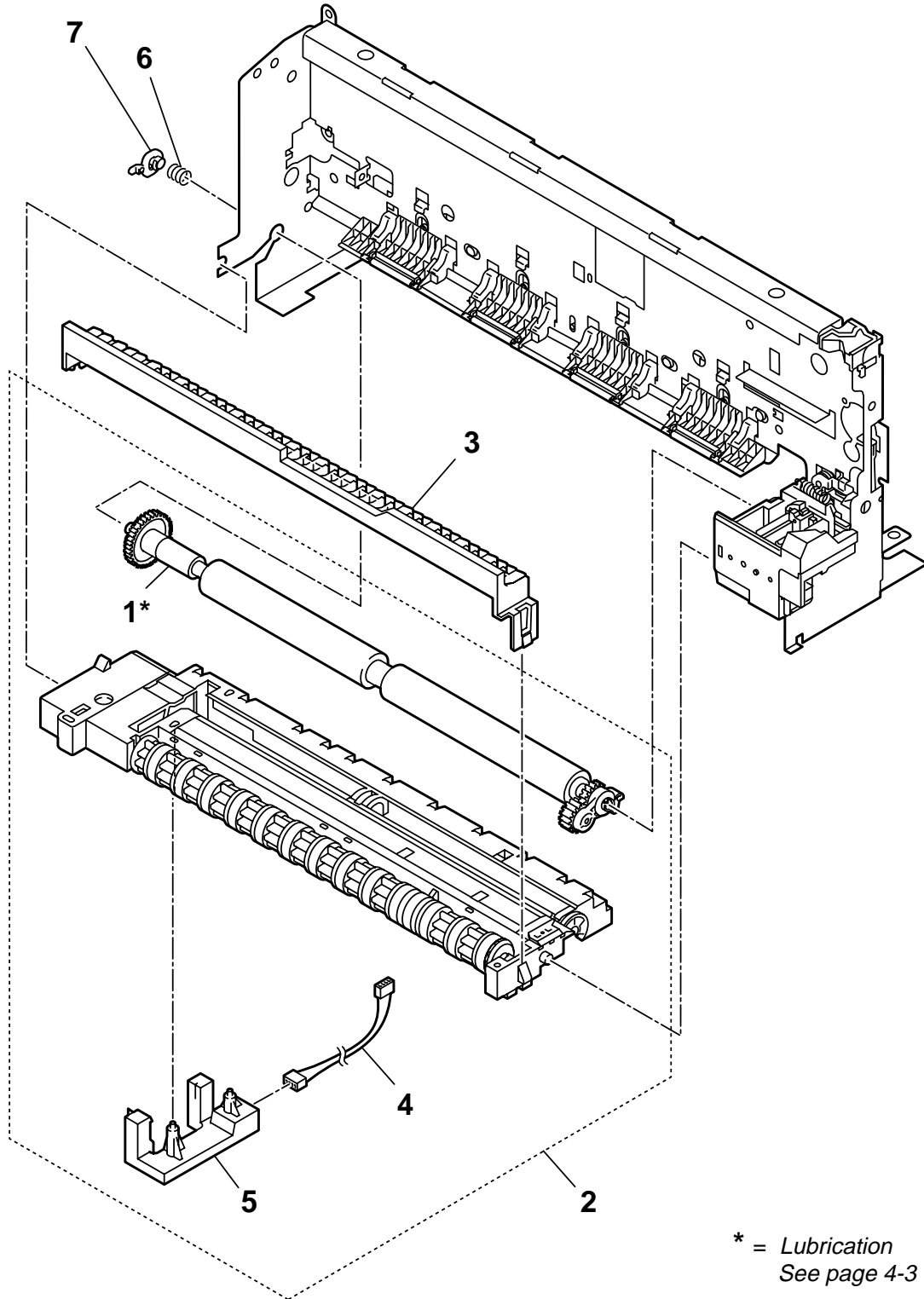
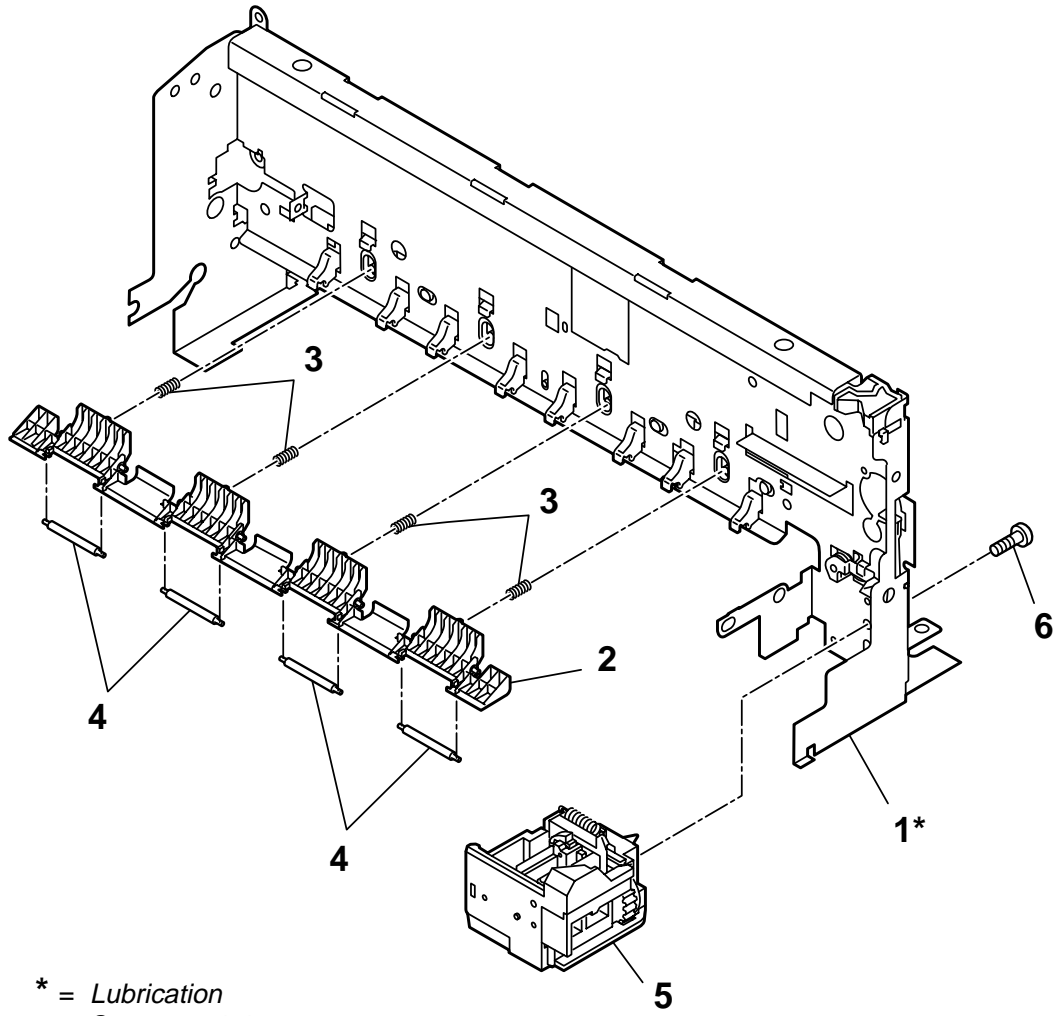


FIGURE 15 PURGE UNIT



* = Lubrication
See page 4-4

FIGURE 16 PRINT FRAME

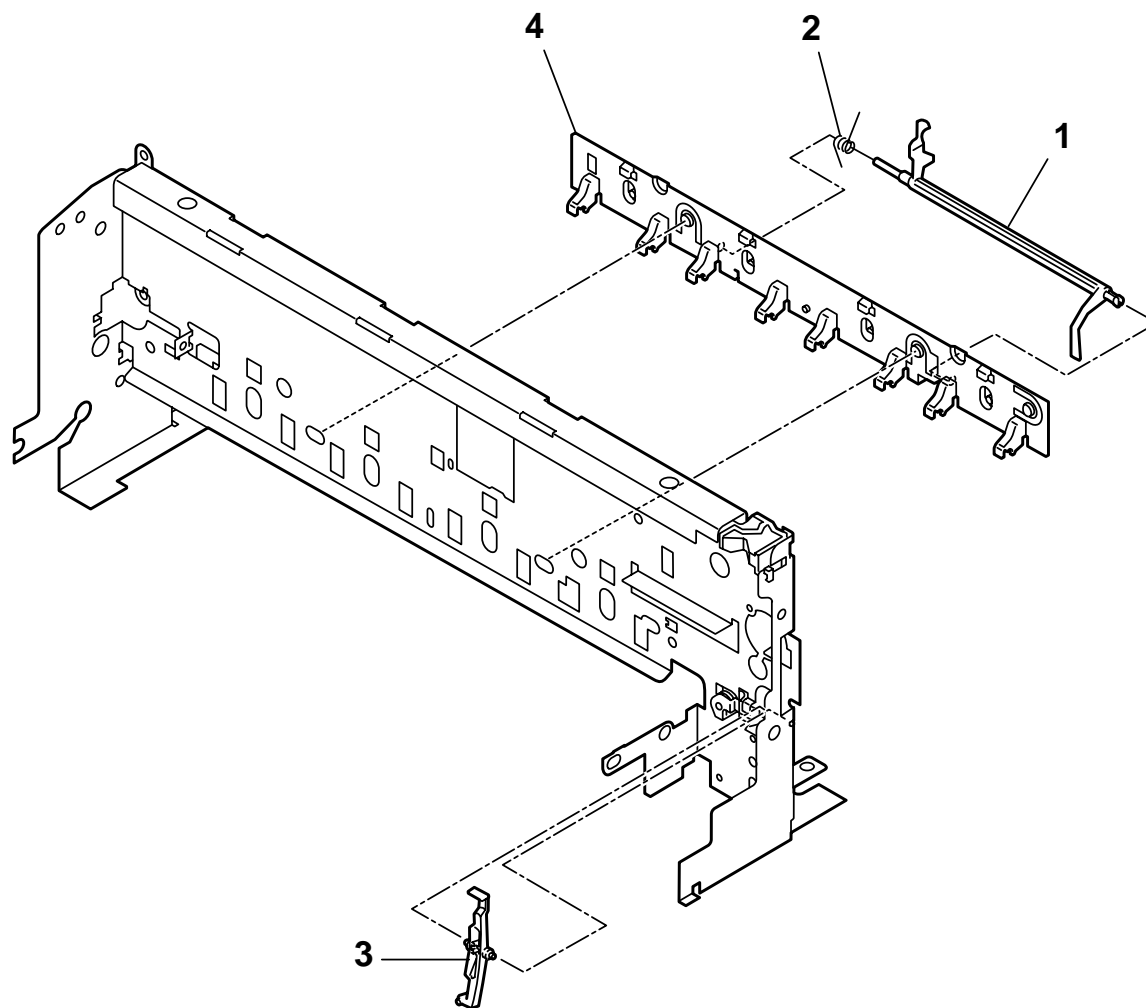


FIGURE 17 AUTO SHEET FEEDER

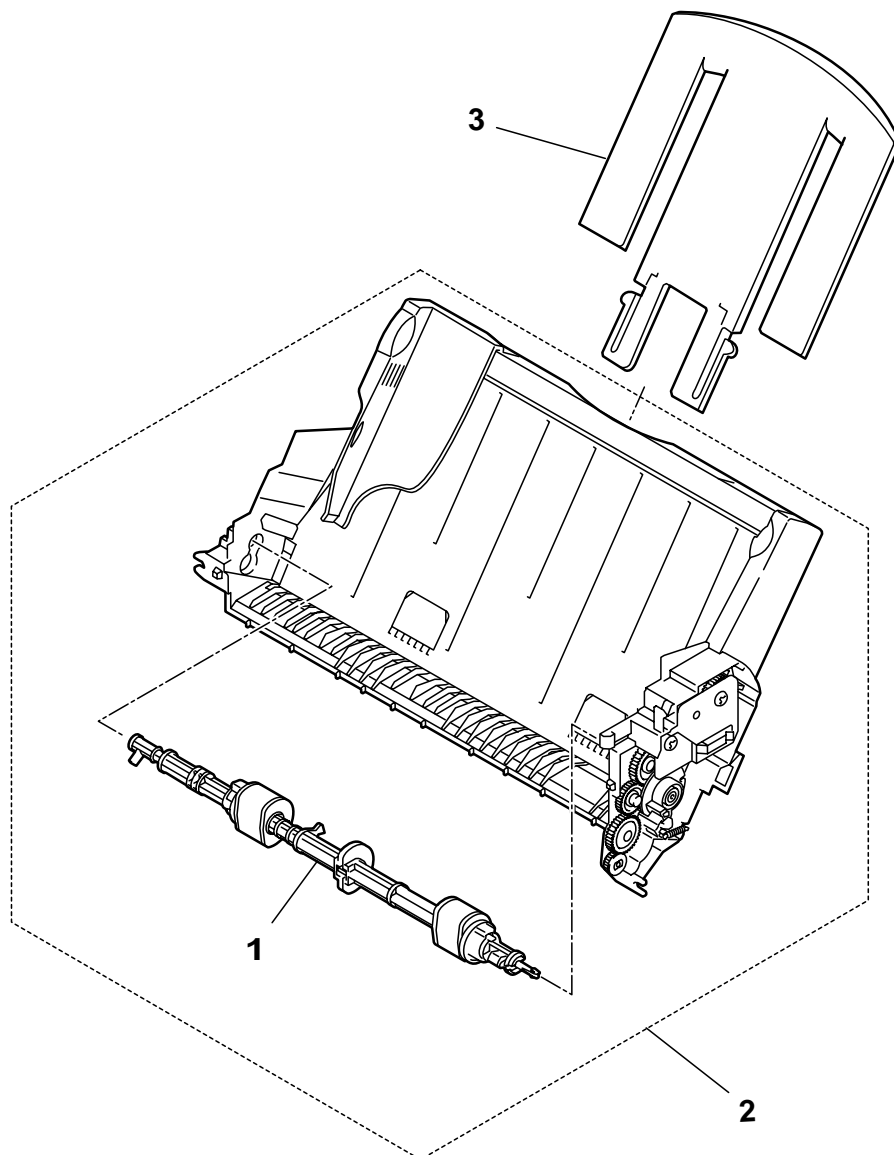


FIGURE 18 SCNT BOARD

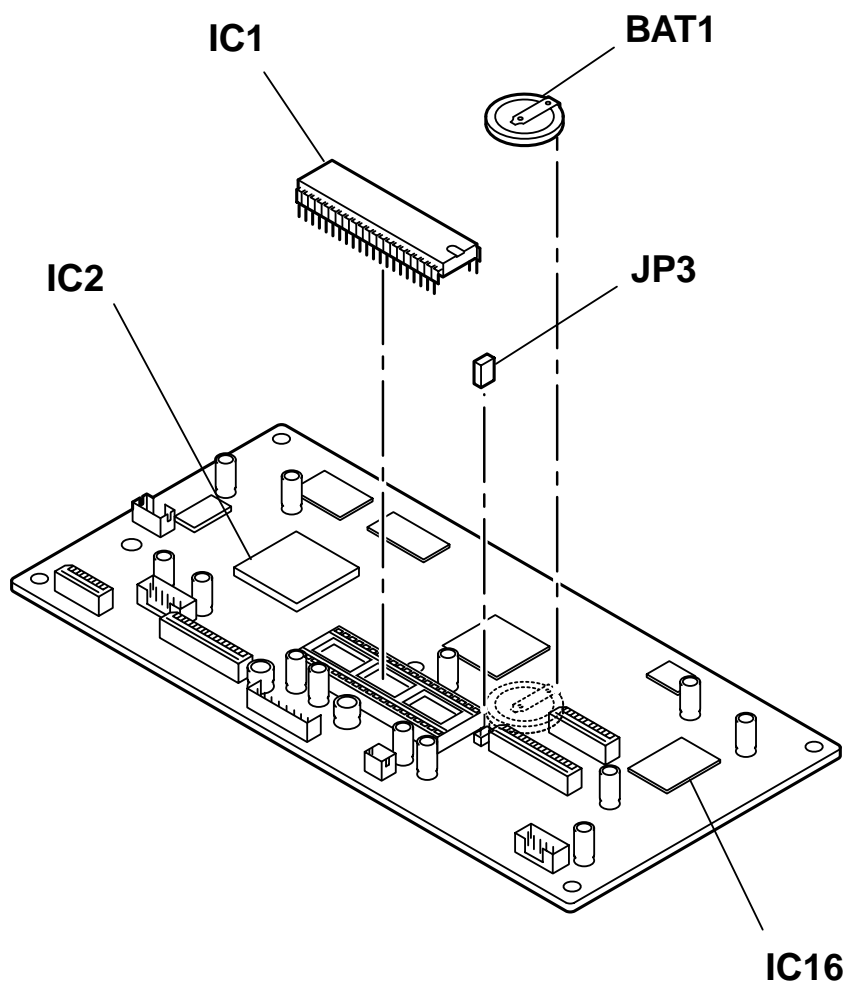


FIGURE 19 PCNT BOARD

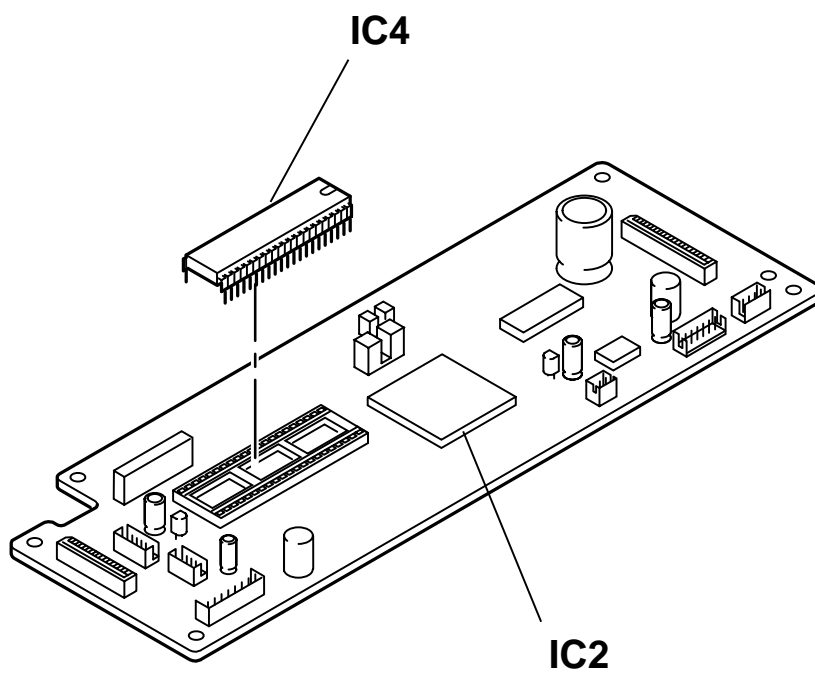


FIGURE 20 NCU BOARD

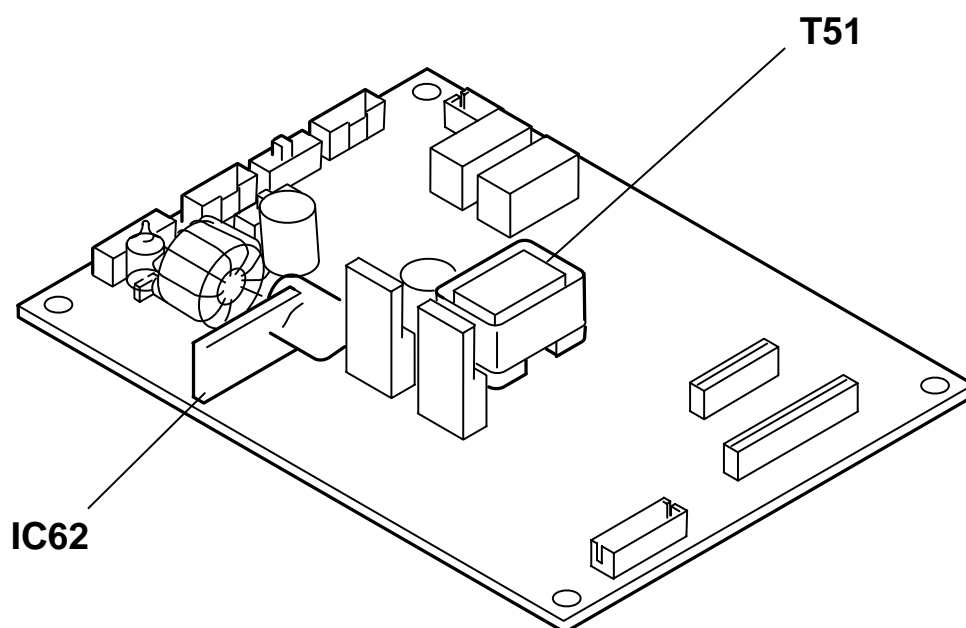


FIGURE & KEY No.	PART No.	R A N K	Q T Y	DESCRIPTION	REMARKS
20 - IC62 T51	HH7-2528-000 HH7-2427-000		1 1	IC, THS-65, HYBRID TRANSFORMER, AUDIO	

FIGURE 21 MODULAR JACK BOARD

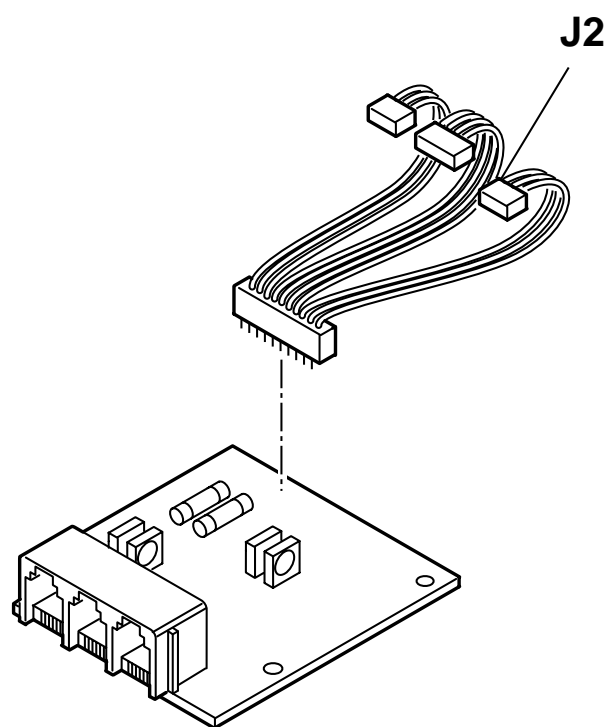
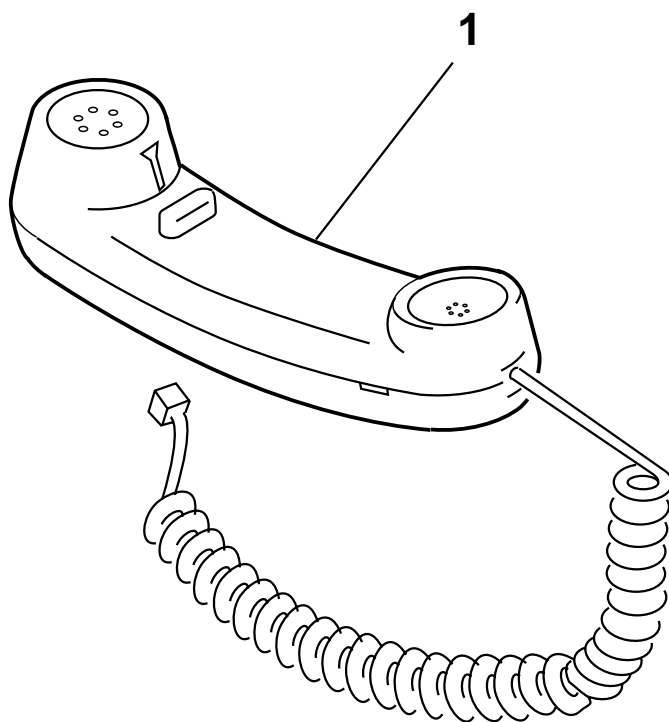
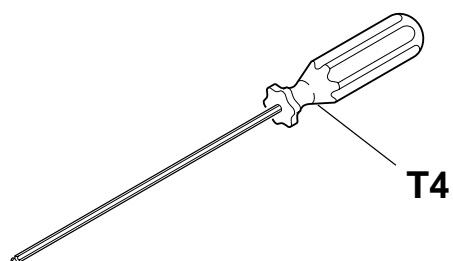
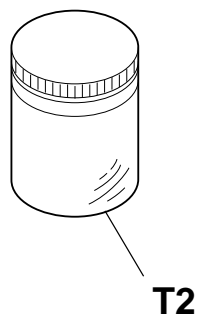
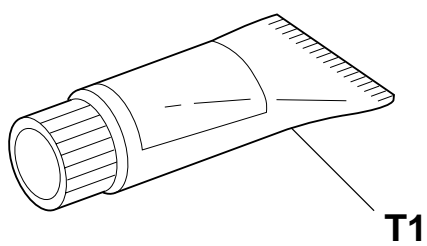


FIGURE 22 TELEPHONE 7



3.TOOL

FIGURE 23 TOOLS

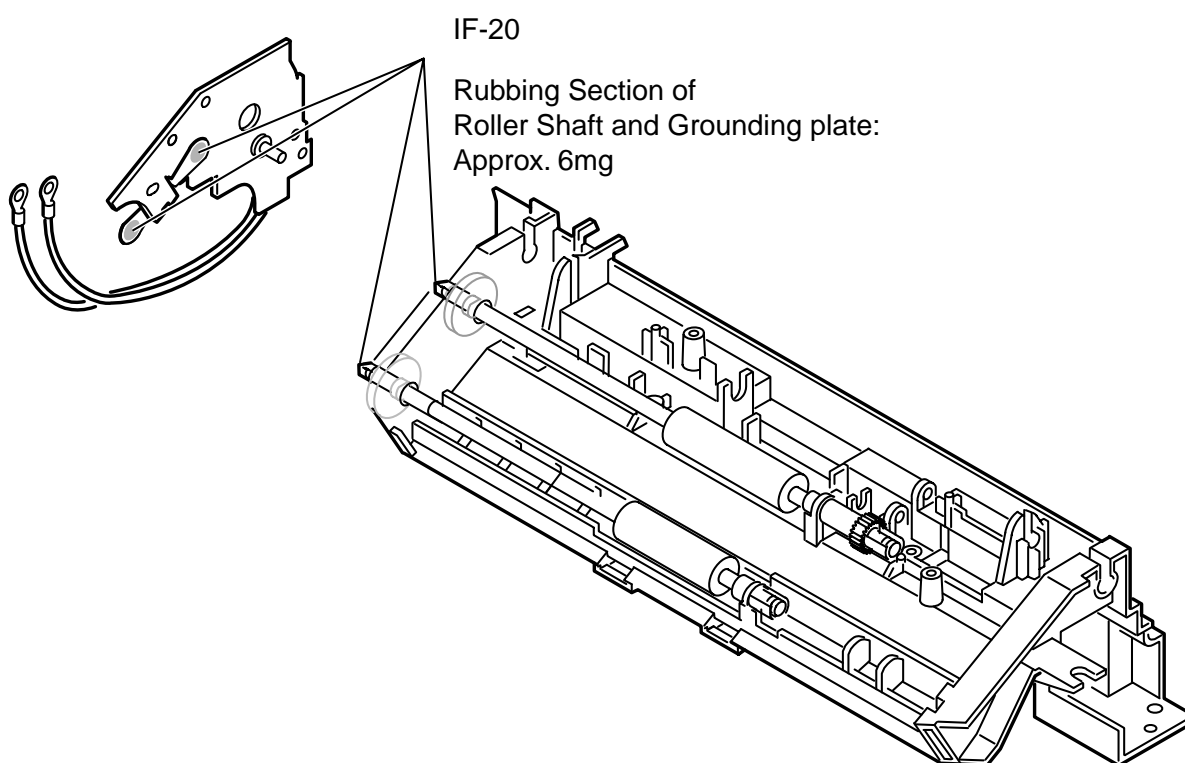


4. LUBRICATIONS

4.1 Locations

Some parts are lubricated with grease to ensure smooth operation and to increase conductivity. If lubricated parts are replaced or grease is removed, grease must be reapplied.

4.1.1 ADF LOWER

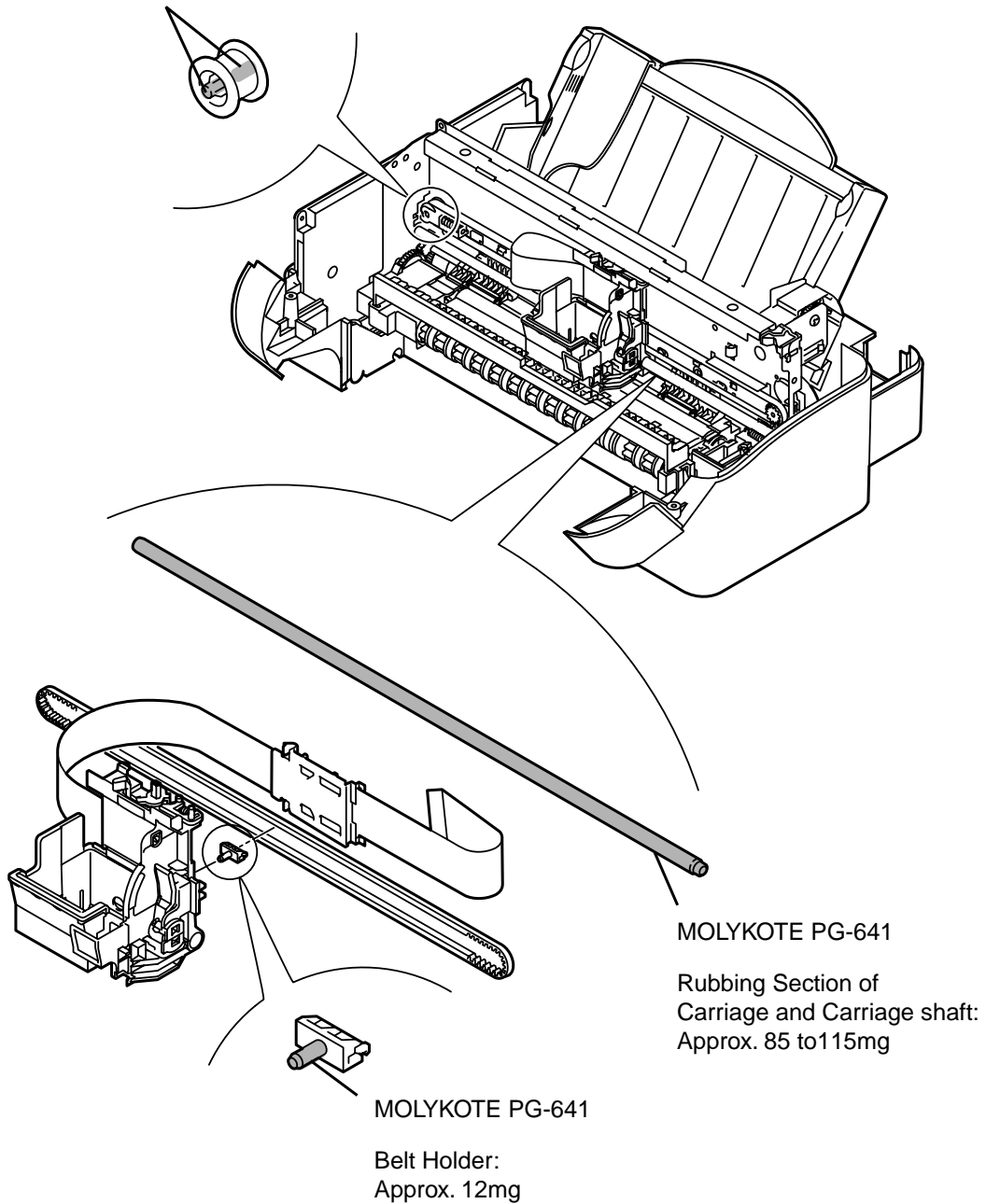


See FIGURE 10 for disassembly

4.1.2 PRINT ASS'Y

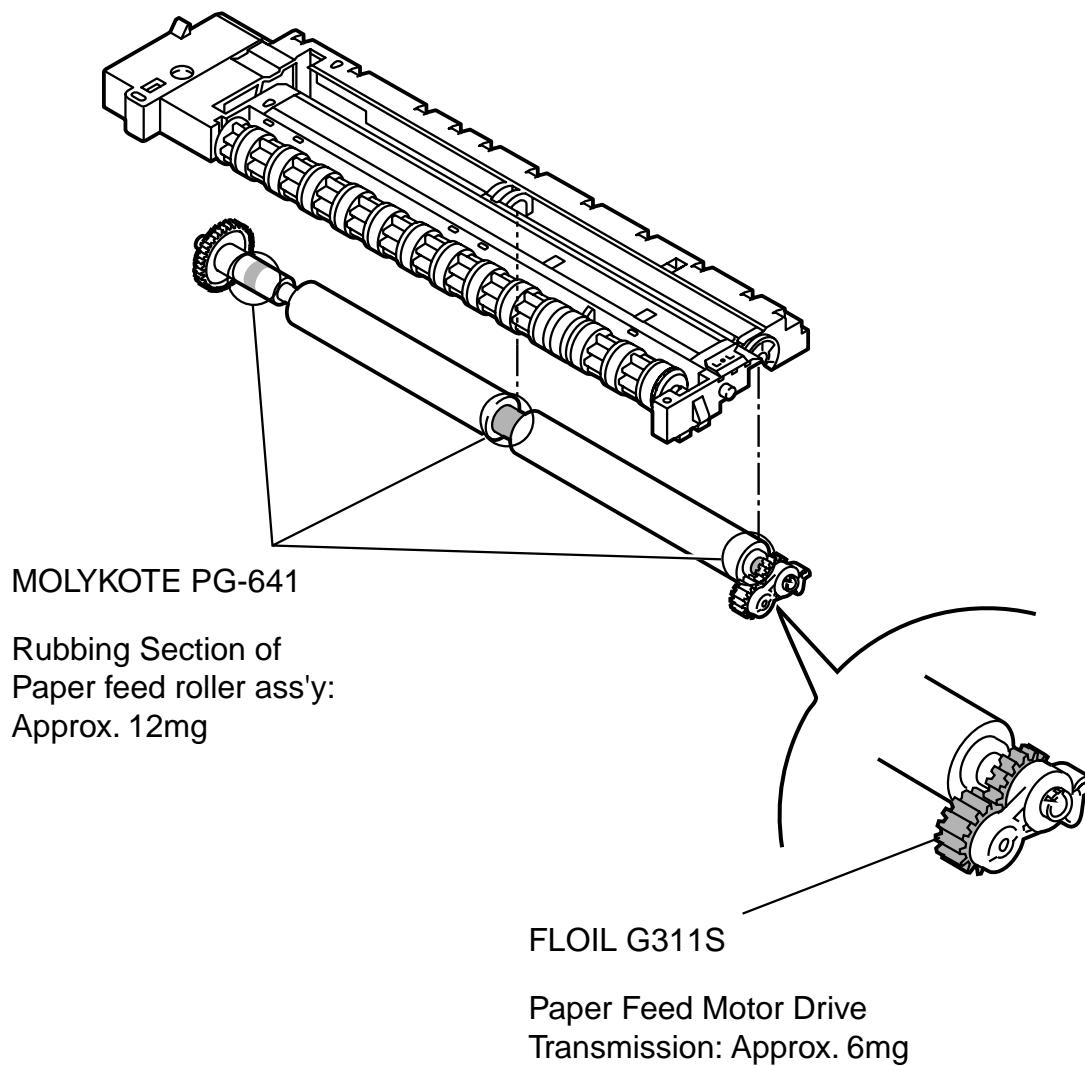
MOLYKOTE PG-641

Idler Roller Shaft Section:
Approx. 6mg



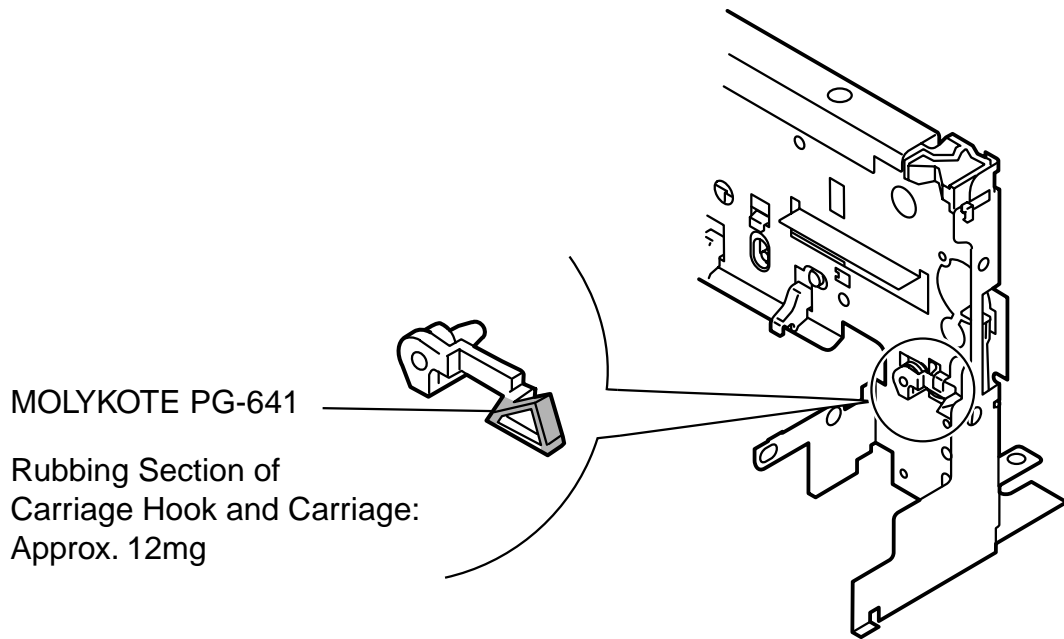
See FIGURE 12 for disassembly

4.1.3 PAPER FEED ASS'Y



See FIGURE 14 for disassembly

4.1.4 CARRIAGE HOOK



See FIGURE 15 for disassembly

5. NUMERICAL INDEX

PART NUMBER	FIGURE & KEY NO	DESCRIPTION	PART NUMBER	FIGURE & KEY NO	DESCRIPTION
CK-0562-000	23 - T1	LUBE, MOLYKOTE PG-641 GREASE	HG5-2616-000	15 - 1	PRINTER FRAME ASSY
CK-8006-000	23 - T2	ELECTRICITY GREASE (IF-20)	HG5-2618-000	7 - 2	OPERATION PANEL UNIT
HB1-1779-000	9 - 1	SPACER	HG5-2622-000	6 - 6	SCNT BOARD ASSY
HB1-2867-000	4 - 1	STOPPER, OPERATION PANEL	HG5-2623-000	14 - 2	PAPER FEED ASSY
HB1-4072-000	8 - 1	BRUSH, STATIC DISCHARGE	HG5-2626-000	12 - 1	CARRIAGE UNIT
HB1-4086-000	16 - 1	ARM, PAPER SENSOR	HG5-2630-000	14 - 3	SPUR ASSY
HB1-4561-000	9 - 2	ROLLER, SEPARATION	HH2-2729-020	14 - 4	CABLE WITH CONNECTOR, 4P
HB1-4873-000	3 - 1	COVER, PRINTER	HH2-2989-000	7 - 3	CABLE, FLAT, 13P
HB1-4874-000	3 - 2	GUIDE, DOCUMENT, RIGHT	HH2-3062-000	9 - 7	CABLE WITH CONNECTOR, 7P
HB1-4875-000	3 - 3	GUIDE, DOCUMENT, LEFT	HH2-3063-000	5 - 5	CABLE WITH CONNECTOR, 8P
HB1-4877-000	2 - 1	TRAY, PAPER EXIT	HH2-3064-000	5 - 6	CABLE, FLAT, 25P
HB1-4878-000	2 - 2	TRAY, PAPER EXTENSION	HH2-3065-000	6 - 9	CABLE WITH CONNECTOR, 6P
HB1-4881-000	2 - 3	TRAY, DOCUMENT EXIT	HH2-3067-000	21 - J2	CABLE WITH CONNECTOR, 15P
HB1-4882-000	3 - 4	COVER, REAR	HH2-3116-000	6 - 7	CABLE, FLAT, 23P
HB1-4884-000	6 - 1	COVER, MODULAR BOARD	HH2-3118-000	6 - 8	CABLE, FLAT, 14P
HB1-4885-000	6 - 2	COVER, POWER SUPPLY	HH3-5367-000	6 - 10	POWER SUPPLY UNIT
HB1-4886-000	5 - 1	ABSORBER, WASTE INK	HH4-3475-000	18 - IC2	IC, MB87L1930, GATE-ARRAY
HB1-4887-000	5 - 2	ABSORBER, WASTE INK	HH4-3476-000	18 - IC16	IC, CX06829-11, MODEM
HB1-4888-000	5 - 3	ABSORBER, WASTE INK	HH4-3477-000	18 - IC16	IC, CX06831-12, MODEM
HB1-4891-000	3 - 5	COVER, UPPER	HH4-3478-000	18 - IC1	IC, MR27V1652DRA, OTP-ROM
HB1-4892-000	3 - 6	HOLDER, HANDSET REST	HH4-3479-000	19 - IC4	IC, MSM27C402CZ, OTP-ROM
HB1-4894-000	2 - 4	TRAY, DOCUMENT	HH7-2371-000	14 - 5	INK DETECTION UNIT
HB1-4897-000	3 - 7	LABEL, CARTRIDGE SET	HH7-2373-000	5 - 7	SPEAKER UNIT
HB1-4898-000	8 - 2	FRAME, ADF, UPPER	HH7-2427-000	20 - T51	TRANSFORMER, AUDIO
HB1-4903-000	8 - 3	STOPPER, DOCUMENT	HH7-2520-000	9 - 8	CONTACT SENSOR UNIT
HB1-4906-000	8 - 4	ARM, DETECTION (DES)	HH7-2528-000	20 - IC62	IC, THS-65, HYBRID
HB1-4907-000	8 - 5	ARM, DETECTION (DS)	HH7-2530-000	1 - 1	HANDSET UNIT
HB1-4920-000	7 - 1	PANEL, DISPLAY	HH7-2532-000	22 - 1	HANDSET UNIT
HB1-4923-000	17 - 3	TRAY, EXTENSION	HH7-2534-000	10 - 4	MOTOR, STEPPING, READER
HB1-4926-000	10 - 1	ROLLER, DOCUMENT FEED	HH7-2594-000	22 - 1	HANDSET UNIT
HB1-4927-000	10 - 2	ROLLER, DOCUMENT EJECT	HH7-2595-000	22 - 1	HANDSET UNIT
HB1-4928-000	9 - 3	COVER, ADF, LOWER	HH7-2596-000	22 - 1	HANDSET UNIT
HB1-4929-000	9 - 4	ARM, LOCK, RIGHT	HH7-2597-000	22 - 1	HANDSET UNIT
HB1-4930-000	9 - 5	ARM, LOCK, LEFT	HS5-0172-000	3 - 9	PINION, 18T
HB1-4946-000	10 - 3	FRAME, ADF, LOWER	HS5-0333-000	10 - 5	GEAR, 36T
HB1-4953-000	3 - 8	RACK	HS5-0334-000	10 - 6	GEAR, 45T
HB1-4954-000	2 - 4	TRAY, DOCUMENT	HS5-0335-000	9 - 9	GEAR, 31T/42T
HB1-4964-000	8 - 6	SHEET, LIGHT SHIELD	HS5-0336-000	10 - 7	GEAR, 19T/40T
HB1-4965-000	8 - 7	SHEET	HS5-0337-000	10 - 8	GEAR, 19T/42T
HB1-4966-000	5 - 4	ABSORBER, WASTE INK	HS5-0340-000	10 - 9	GEAR, 39T/49T
HB1-4969-000	9 - 6	SHEET, SEPARATION	HS5-0341-000	10 - 10	GEAR, 19T
HF5-0625-000	6 - 3	MAIN FRAME ASSY	HS5-0342-000	9 - 10	GEAR, 32T
HF5-0626-000	8 - 8	WHITE REFERENCE SHEET UNIT	HS5-1092-000	10 - 11	BUSHING
HG5-2026-000	17 - 1	PICK-UP ROLLER ASSY	HS5-1093-000	10 - 12	BUSHING
HG5-2032-000	14 - 1	PAPER FEED ROLLER ASSY	HS5-2077-000	9 - 11	SPRING, CLUTCH
HG5-2587-000	6 - 4	NCU BOARD ASSY	HS5-2094-000	3 - 10	SPRING
HG5-2603-000	6 - 5	MODULAR JACK BOARD ASSY	HS5-2170-000	8 - 10	SPRING, WHITE SHEET
HG5-2604-000	6 - 6	SCNT BOARD ASSY	HS5-2234-000	8 - 11	SPRING
HG5-2605-000	11 - 1	PCNT BOARD ASSY	HS5-2235-000	8 - 12	SPRING
HG5-2609-000	8 - 9	SEPARATION GUIDE ASSY	HS5-2236-000	9 - 12	SPRING, TORSION
HG5-2610-000	7 - 2	OPERATION PANEL UNIT	HS5-2237-000	9 - 13	SPRING, TORSION
HG5-2611-000	17 - 2	AUTO SHEET FEEDER ASSY	HS5-2239-000	8 - 13	SPRING, ADF
HG5-2615-000	11 - 3	PRINT ASSY	HY9-0021-000	23 - T4	SCREWDRIVER, HEX HEAD (1.27MM)

PART NUMBER	FIGURE & KEY NO	DESCRIPTION
QB1-0412-000	16 - 2	SPRING, TORSION
QB1-0423-000	14 - 6	SPRING, COIL
QB1-0500-000	13 - 1	GEAR, SLOW DOWN
QB1-0501-020	12 - 2	ROLLER, IDLER
QB1-0503-000	12 - 3	SPRING, COIL
QB1-3593-000	6 - 11	FOOT, PRINTER
QB1-3832-000	15 - 3	SPRING, COIL
QB1-3833-000	15 - 4	ROLLER, PRESSURE
QB1-3834-000	12 - 4	BRACKET, IDLER
QB1-3835-000	14 - 7	BUSHING
QB1-3837-000	12 - 5	SHAFT, CARRIAGE
QB1-3865-000	12 - 6	BELT, CARRIAGE
QB1-3866-000	12 - 7	HOLDER, BELT
QB1-3897-000	12 - 8	CLIP, SHAFT
QB1-3905-000	16 - 3	ARM, SENSOR
QB1-4879-000	15 - 2	PLATE, PRESSURE
QG5-1319-020	15 - 5	PURGE UNIT
QH4-4241-000	13 - 2	MOTOR, CARRIAGE
QH4-4245-000	13 - 3	MOTOR, PAPER FEED
QH8-0158-000	19 - IC2	IC,T6W91,ASIC,
TKC-0953-000	23 - T3	GREASE, FLOIL G311S (20GS)
WK1-5130-000	18 - BAT1	BATTERY, LITHIUM, CR2032/1HS
WS1-5792-000	18 - JP3	PLUG, SHORT
XA9-0283-000	3 - 11	SCREW, TP, PH3X6
XA9-1116-000	13 - 4	SCREW, M3X5
XB1-2300-405	13 - 5	SCREW, MACH. BH, M3X4
XB1-2300-407	6 - 12	SCREW, BH3X4 (S)
	10 - 13	
	11 - 4	
XB2-7300-607	4 - 2	SCREW, M3X6
	5 - 8	
	6 - 13	
XB2-7400-607	5 - 9	SCREW, TOOTHED WASHER, M4X6
	6 - 14	
XB4-7300-509	15 - 6	SCREW, TAPPING, M3X5
XB4-7300-809	3 - 12	SCREW, TAP, BINDING HEAD, M3X8
	4 - 3	
	5 - 10	
	6 - 15	
	7 - 4	
	8 - 14	
	9 - 14	
	10 - 14	
XB5-6300-605	12 - 9	SCREW, TP, PH3X6
XB6-7300-607	11 - 5	SCREW, TP, M3X6

This page intentionally left blank

Canon