

**Installation of
Field Feature Bill of Material (FFBM)**

PN 26L0451

**Install Network Node Control Point (NNP-B)
Type 3
(Based on 6275)
Feature Code 5423**

on IBM 3746-900.

Written by: C. Vallee
Checked by: C. Franoux
Approved by: A. Badino
Reviewed by: R. Lympany

3746 FFBM	PN 42L2445 1 of 10	EC F52322 09 Oct 1998	EC F12701A 14 DEC 1998	EC F70078 22 APR 1999		
--------------	-----------------------	--------------------------	---------------------------	--------------------------	--	--



Before Installation (Steps 1-8)

1.0 Machines Affected

3746 Model 900 with service processor and network node processor type: 6275-56U, 6275-83U, 7585-P02, or 3172-P90.

This feature should only be applied on the machine serial number for which it is specified.

2.0 Related BMs and ECs

2.1 Prerequisites

(Must be installed prior to this installation)

Feature	Title
5053	Service Processor type 6275-56U or 6275-83U or
5052	Service Processor type 7585-P02 or
5021	Service Processor type 3172-P90
5423	Network Node Processor-A type 6275-56U or 6275-83U or
5122	Network Node Processor-A type 7585-P02 or
5022	Network Node Processor-A type 3172-P90
EC	Title
F12720	Licensed Internal Code (Minimum level)

Checkpoint: Check that the APPN EC Level is F12721.000 or higher.

Note: Refer to the *SPIM* or the *Service User's Guide* shipped with the service processor, verify that the code is at EC **F12720** or above.

Use the procedure: **Displaying the EC Level of the Code installed on the hard disk**. If the EC of the code installed is prior to F12720, use the installation instructions to install the new level of code shipped.

3746 FFBM	PN 42L2445 3 of 10	EC F52322 09 Oct 1998	EC F12701A 14 DEC 1998	EC F70078 22 APR 1999		
--------------	-----------------------	--------------------------	---------------------------	--------------------------	--	--

2.2 Concurrent ECs

(Must be installed together)

None.

2.3 Companion ECs

(May be installed together)

None.

3.0 BMs to be Installed

Feature

B/M	Title
26L0451	Network Node Processor B (NNP-B) Feature Code 5423

4.0 Preparation

1. Familiarize yourself with the purpose and details of the installation instruction before negotiating machine time with the customer.
2. Check all items listed on the BM(s) to determine that all parts have been received. Refer to chapter 1 in the *Network Node Processor Installation and Maintenance (Based on 6275)*, SY33-2126.
3. The set up of the NNP-B has no impact on customer operations.
4. Obtain from the customer the **Parameter worksheet**.

5.0 Programming

None.

6.0 Purpose and Description

6.1 Purpose

To increase the reliability of the 3746-9X0 by adding a backup NNP.

PN 42L2445	EC F52322 09 Oct 1998	EC F12701A 14 DEC 1998	EC F70078 22 APR 1999		
------------	--------------------------	---------------------------	--------------------------	--	--

6.2 Description

The installation of the NNP-B is divided into two main steps:

1. Installing the 6275-56U or the 6275-83U system unit
2. Loading the code on the NNP-B.

Note: These steps are documented in the *Network Node Processor Installation and Maintenance (Based on 6275)*, SY33-2126.

3746 FFBM	PN 42L2445 5 of 10	EC F52322 09 Oct 1998	EC F12701A 14 DEC 1998	EC F70078 22 APR 1999		
--------------	-----------------------	--------------------------	---------------------------	--------------------------	--	--

7.0 Installation Time

FFBM	Machine Hrs.	System Hrs.	Nbr of CEs
26L0451	0.2	0.0	1

Note: To reduce the MES installation time it is recommended that you load the Network Node Processor Code on the Service Processor and install the system unit at the same time.

No impact on 3745 customer operations.

8.0 Tools/Material Required

None.

Installation (Steps 9-12)

9.0 Safety

Review the **Safety Notices** and the **Safety Inspection Procedures** located at the beginning of the *IBM 3745 Communication Controller All Models, IBM 3746 Expansion Unit Model 900, IBM 3746 Nways Multiprotocol Controller Model 950 Safety Information, GA33-0400*.

10.0 Details of Installation.

10.1 Installing and Connecting the NNP

Note: For any unexpected message or error concerning the NNP-B, go to **Chapter 3. Network Node Processor Problem Determination** of the *Network Node Processor Installation and Maintenance (Based on 6275), SY33-2126*.

- ___ 1. Using the *Network Node Processor Installation and Maintenance (Based on 6275), SY33-2126*., go to chapter 1 and install the NNP following the instructions to install a NNP-B. When completed go to next step.
- ___ 2. Ask the customer for a maintenance window on 3746-900 with traffic deactivated.

3746 FFBM	PN 42L2445 6 of 10	EC F52322 09 Oct 1998	EC F12701A 14 DEC 1998	EC F70078 22 APR 1999		
--------------	-----------------------	--------------------------	---------------------------	--------------------------	--	--

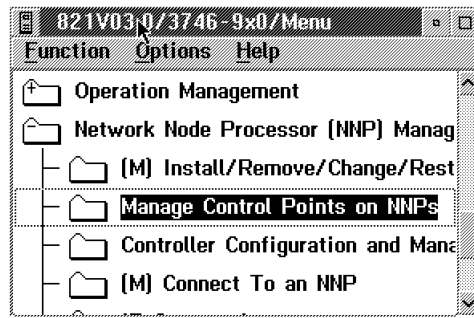
- 3. Shutdown and restart the Service Processor and re-iml the 3746-9x0

10.2 Enabling the NNP Back-up Function

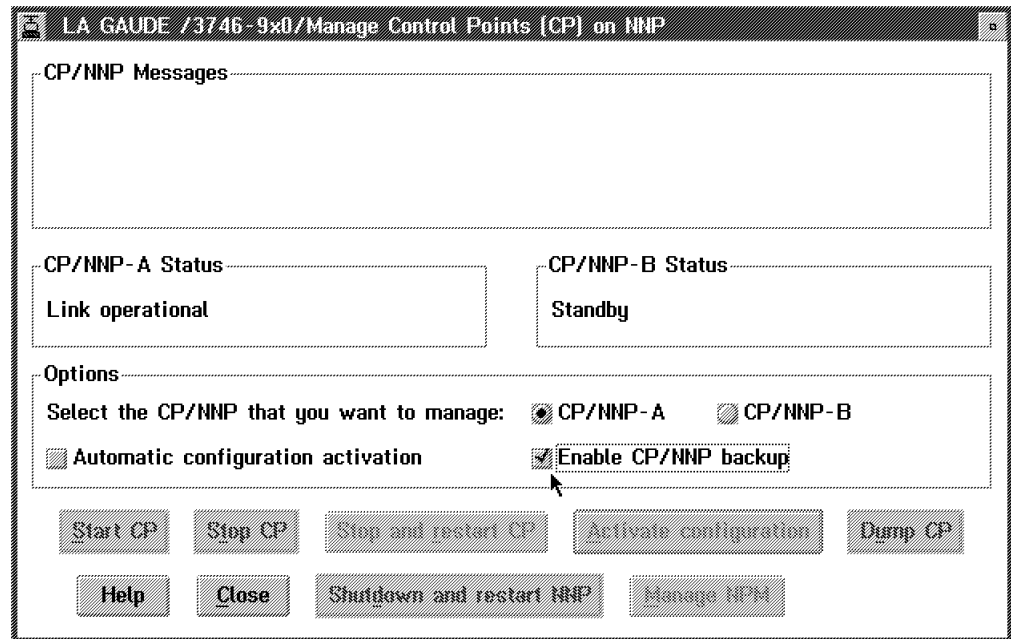
Important

It's a customer task, but ask the customer if he wants you to perform this task.

- 1. On the **3746-9X0** main menu, Click on **Network Node Processor Management**.
- 2. Double click on **Manage Control Point on NNPs**.



- 3. Click on **Enable the CP/NNP back-up**.



- 4. Click on **Close** to exit from the function.

Note: For details refer to chapter **Working with the NNP Functions** on the *3746-950 User's Guide, SA33-0356*, or the *3745-17A to 61A and 3746-900 Basic Operation Guide, SA33-0177*.

3746 FFBM	PN 42L2445 7 of 10	EC F52322 09 Oct 1998	EC F12701A 14 DEC 1998	EC F70078 22 APR 1999		
--------------	-----------------------	--------------------------	---------------------------	--------------------------	--	--

10.3 Log Off the MOSS-E

- ___ 1. On the **3746-9x0 Menu** window, click on **Function**, then click on **Exit**.
- ___ 2. On the **MOSS-E View** window, click on **Program**.
- ___ 3. Click on **LOG OFF MOSS-E**.
- ___ 4. Close the front and rear doors of the controller expansion.

10.4 Returning the Machine to the Customer

Inform the customer that the NNP backup is installed and operational.

11.0 Test Procedures

No test required.

12.0 Field Updating

None.

After Installation (Steps 13-15)

13.0 Field Updating

None.

14.0 Publications Update

None.

15.0 Parts Disposition

3746 FFBM	PN 42L2445 8 of 10	EC F52322 09 Oct 1998	EC F12701A 14 DEC 1998	EC F70078 22 APR 1999		
--------------	-----------------------	--------------------------	---------------------------	--------------------------	--	--

15.1 Purchased Machines

Refer to the parts ownership matrix to determine the correct owner of removed/unused parts.

- For EMEA/APG/AG Areas, refer to *Hardware and General Service Code Description*.
- For Domestic Areas, return parts to the customer.

16.0 Machine Records

- Install the new **MACHINE HISTORY** supplied.
- Report installation and quality problems using existing procedures.

End of instructions.

3746 FFBM	PN 42L2445 9 of 10	EC F52322 09 Oct 1998	EC F12701A 14 DEC 1998	EC F70078 22 APR 1999		
--------------	-----------------------	--------------------------	---------------------------	--------------------------	--	--

3746 FFBM	PN 42L2445 10 of 10	EC F52322 09 Oct 1998	EC F12701A 14 DEC 1998	EC F70078 22 APR 1999		
--------------	------------------------	--------------------------	---------------------------	--------------------------	--	--