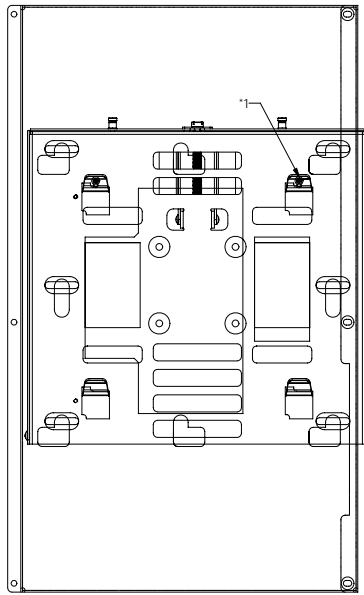
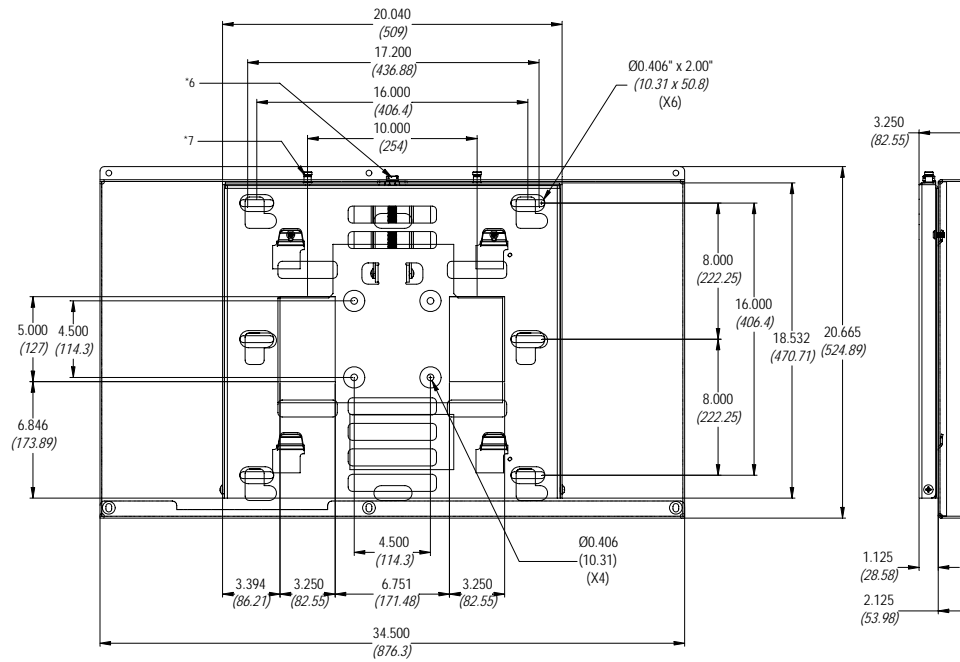


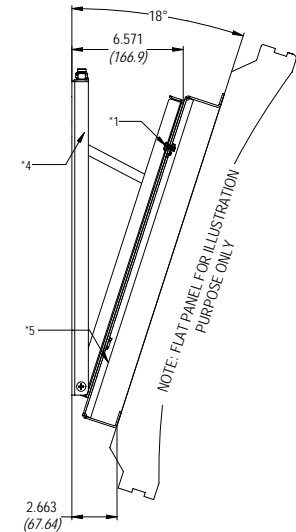
Dimensions shown in inches and (mm)



VERTICAL MOUNTING



HORIZONTAL MOUNTING



NOTES:

- *1 - M6 x 12 phillips screws for additional security when mounting to tilt mounts, ceiling adapters and floor stands only.
- *2 - Cable access holes
- *3 - 4.5" hole pattern for ceiling adapters and floor stands.
- *4 - Wall plate
- *5 - Mounting bracket
- *6 - Jack screw
- *7 - Set Pins (X2)

BID SPECIFICATIONS

- CONSTRUCTION OF THE PWM-6121 - 12 (ga) CRS
- MOUNTING TO 16" WOOD STUDS
- ALL SHARP EDGES ARE BROKEN FOR A SMOOTH FINISH
- MAXIMUM BEND RADIUS ARE (.06) (.03)
- DRAWINGS ARE INTERPRET BY (Y14.5)

TITLE

PWM-6121