



ML-95 Parts Manual 1996 Thru February 1999

American Dryer Corporation
88 Currant Road
Fall River, MA 02720-4781
Telephone: (508) 678-9000 / Fax: (508) 678-9447
E-mail: techsupport@amdry.com
www.amdry.com

Retain This Manual In A Safe Place For Future Reference

American Dryer Corporation products embody advanced concepts in engineering, design, and safety. If this product is properly maintained, it will provide many years of safe, efficient, and trouble-free operation.

ONLY qualified technicians should service this equipment.

OBSERVE ALL SAFETY PRECAUTIONS displayed on the equipment or specified in the installation manual included with the dryer.

The following “**FOR YOUR SAFETY**” caution **must be** posted near the dryer in a prominent location.

FOR YOUR SAFETY

Do not store or use gasoline or other flammable vapors and liquids in the vicinity of this or any other appliance.

POUR VOTRE SÉCURITÉ

Ne pas entreposer ni utiliser d'essence ni d'autres vapeurs ou liquides inflammables à proximité de cet appareil ou de tout autre appareil.

We have tried to make this manual as complete as possible and hope you will find it useful. ADC reserves the right to make changes from time to time, without notice or obligation, in prices, specifications, colors, and material, and to change or discontinue models.

Important

For your convenience, log the following information:

DATE OF PURCHASE _____ MODEL NO. **ML-95 Phase 6**

RESELLER'S NAME _____

Serial Number(s) _____

Replacement parts can be obtained from your reseller or the ADC factory. When ordering replacement parts from the factory, you can FAX your order to ADC at (508) 678-9447 or telephone your order directly to the ADC Parts Department at (508) 678-9000. Please specify the dryer **model number** and **serial number** in addition to the **description** and **part number**, so that your order is processed accurately and promptly.

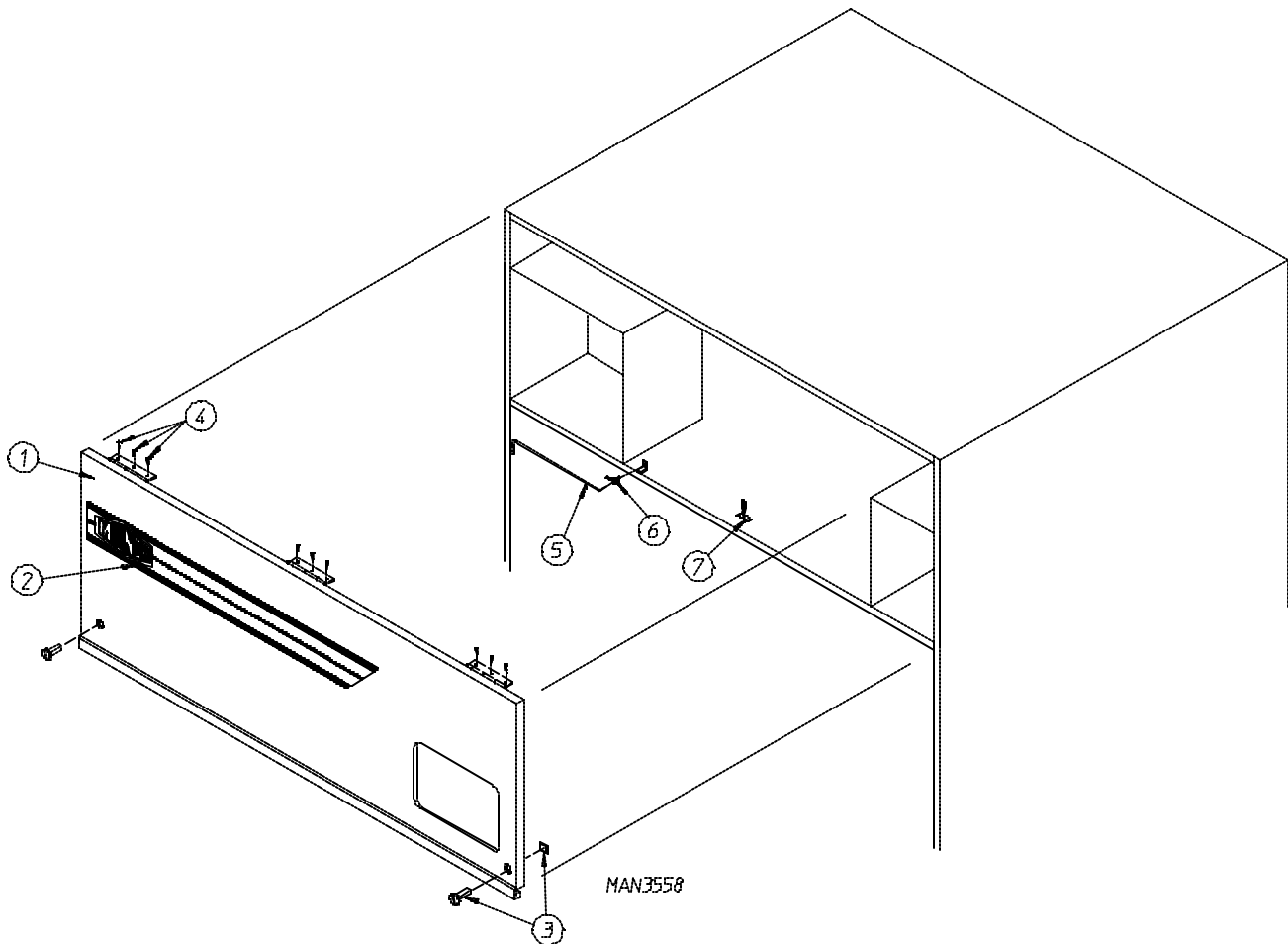
The illustrations on the following pages may not depict your particular dryer exactly. The illustrations are a composite of the various dryer models. Be sure to check the descriptions of the parts thoroughly before ordering.

“IMPORTANT NOTE TO PURCHASER”

Information **must be** obtained from your local gas supplier on the instructions to be followed if the user smells gas. These instructions **must be** posted in a prominent location near the dryer.

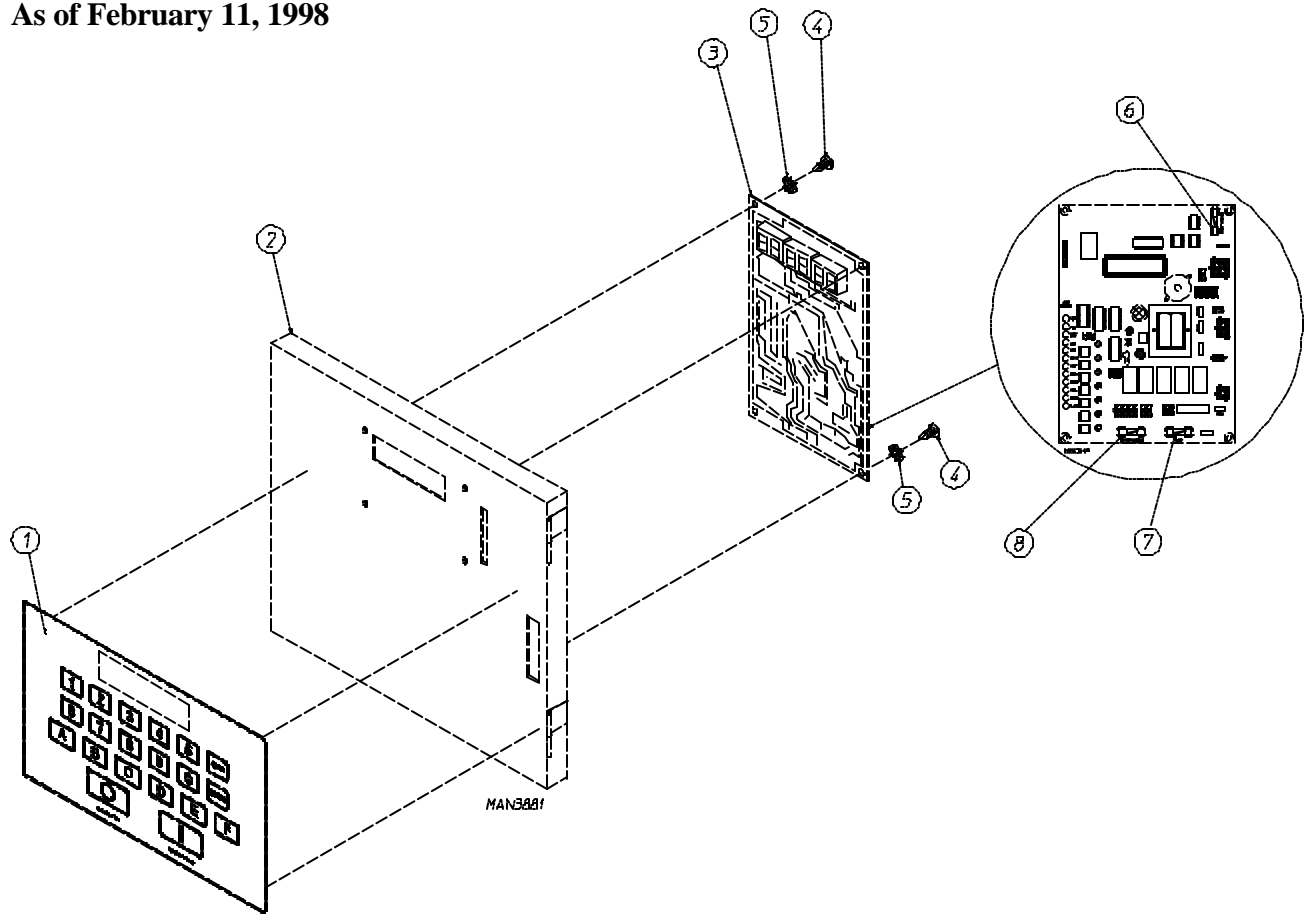
Table of Contents

| | |
|--|--------|
| Control Door Assembly | 2 |
| Phase 6 Microprocessor Panel Assembly for models mfd. as of February 11, 1998..... | 3 |
| Phase 6 Microprocessor Panel Assembly for models mfd. prior to February 11, 1998..... | 4 |
| Sensor Bracket Assembly | 5 |
| Front Panel/Main Door Assemblies for models mfd. as of October 24, 1997 | 6, 7 |
| Front Panel/Main Door Assemblies for models mfd. prior to October 24, 1997 | 8, 9 |
| Main Door Switch for models mfd. as of October 24, 1997 | 10 |
| Main Door Switch for models mfd. prior to October 24, 1997 | 11 |
| Lint Door Assembly | 12, 13 |
| Basket (Tumbler) Assembly | 14 |
| Front Thruster Wheel Assembly for models mfd. between September 15, 1997 and April 6, 1998 | 15 |
| Front Thruster Wheel Assembly for models mfd. prior to September 15, 1997..... | 16 |
| Rear Thruster Wheel Assembly for models mfd. between September 15, 1997 and April 6, 1998 | 17 |
| Rear Thruster Wheel Assembly for models mfd. prior to September 15, 1997..... | 18 |
| Front Thruster Wheel Assembly for models mfd. as of April 6, 1998 | 19 |
| Rear Thruster Wheel Assembly for models mfd. as of April 6, 1998 | 20 |
| Idler Shaft Assembly for models mfd. as of December 15, 1997 | 21 |
| Idler Shaft Assembly for models mfd. prior to December 15, 1997 | 22 |
| Drive Shaft Assembly for models mfd. as of December 15, 1997 | 23 |
| Drive Shaft Assembly for models mfd. prior to December 15, 1997 | 24 |
| Drive Motor Assembly | 25 |
| Blower (Fan/Impellor) Motor Assembly | 26 |
| Sail Switch Assembly | 27 |
| Blower (Fan/Impellor) Wheel Assembly (with Air Jet) for models mfd. as of July 1, 1998..... | 28, 29 |
| Blower (Fan/Impellor) Wheel Assembly (without Air Jet) for models mfd. prior to July 1, 1998 | 30, 31 |
| Burner Assembly | 32, 33 |
| Reversing Relay Panel Assembly for 208/230/240/380/416 Volt Models Only | 34, 35 |
| Reversing Relay Panel Assembly for 460/480 Volt Models Only | 36 |
| Transition Piece Assembly with Damper for models mfd. as of September 12, 1997 | 37 |
| Exhaust Adapter Assembly for models mfd. prior to September 12, 1997 | 38 |
| Pneumatic Valve Assembly for models mfd. as of July 1, 1998 | 39 |



| <u>Illus. No.</u> | <u>Part No.</u> | <u>Qty.</u> | <u>Description</u> |
|-------------------|-----------------|-------------|---|
| 1 | 882093 | 1 | White Control Door Assembly (As of February 11, 1998) |
| | 882092 | 1 | Blue Control Door Assembly (As of February 11, 1998) |
| | 881732 | 1 | White Control Door Assembly ONLY (Prior to February 11, 1998) |
| | 881731 | 1 | Blue Control Door Assembly ONLY (Prior to February 11, 1998) |
| 2 | 112368 | 1 | Milnor Logo ONLY |
| 3 | 160005 | 2 | Spring Turn Latch (2-piece) |
| 4 | 150309 | 9 | #10-16 x 1/2" Hex Head TEK Crimptite Screw |
| 5 | 102505 | 1 | Control Door Support Rod |
| 6 | 102601 | 1 | Control Door Retainer Clip |
| 7 | 102600 | 1 | Control Door Rod Catch |

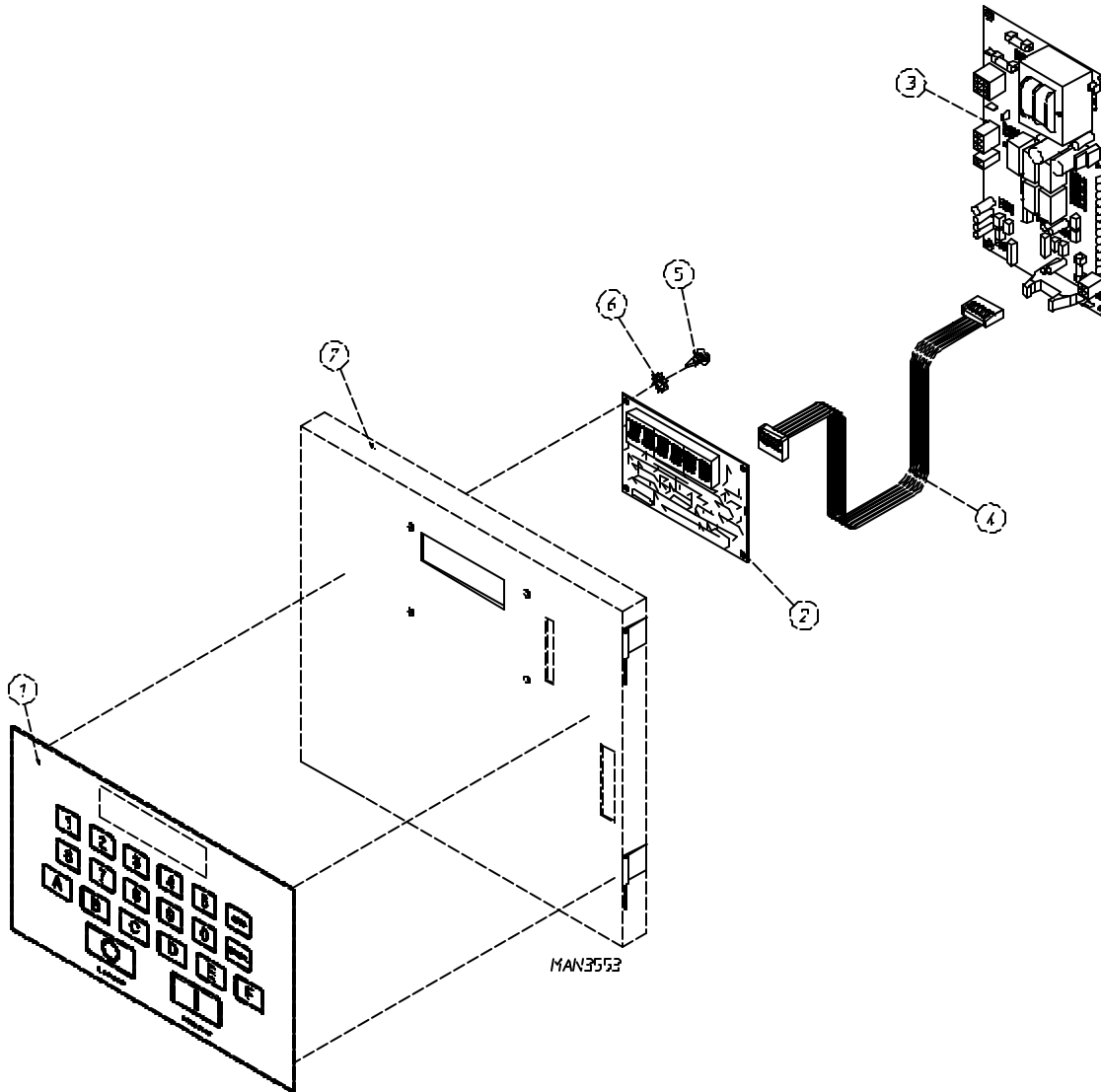
As of February 11, 1998



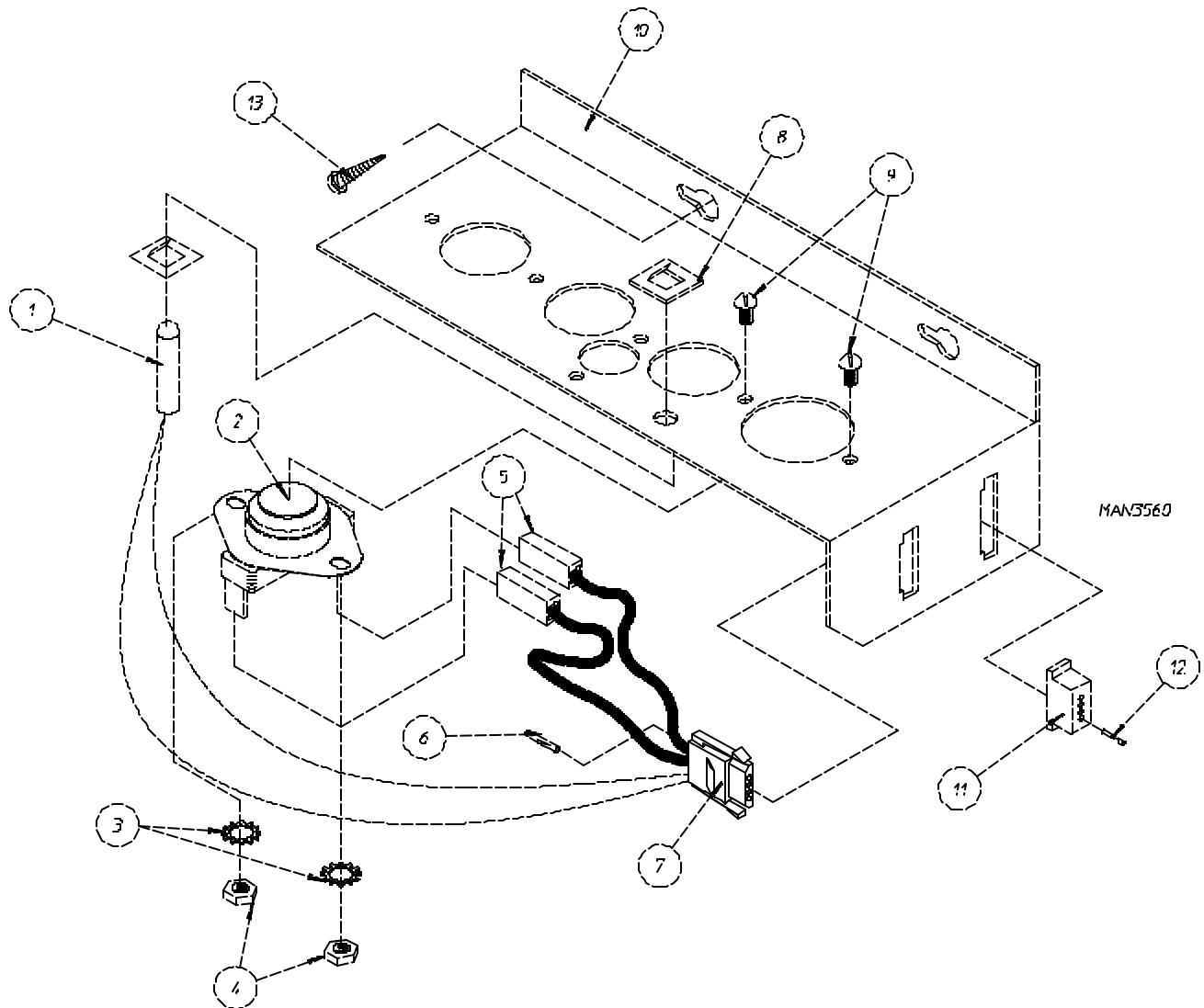
| Illus. No. | Part No. | Qty. | Description |
|------------|----------|------|---|
| 1 | 112537 | 1 | Phase 6 OPL Keyboard (touch pad) |
| | 112276 | 1 | OPL Stick-On Labels (English Only) Not Illustrated |
| | 112275 | 1 | 3 Language OPL Stick-On Labels (Spanish, Italian, and Hebrew) Not Illustrated |
| | 112277 | 1 | 3 Language OPL Stick-On Labels (English, Spanish, and Hebrew) Not Illustrated |
| | 112278 | 1 | 5 Language OPL Stick-On Labels (Italian, Dutch, French, German, and Chinese) Not Illustrated |
| 2 | 824480 | 1 | Phase 6 Microprocessor Controller (computer) Panel ONLY |
| 3 | 137124 | 1 | Phase 6 Reversing Microprocessor Controller (computer) with Air Jet (As of June 26, 1998) |
| | 137122* | 1 | Phase 6 Reversing Microprocessor Controller (computer) without Air Jet (For models mfd. between February 11, 1998 and June 26, 1998) |
| 4 | 150005 | 6 | #6-32 x 3/4" Phillips Round Head Machine Screw |
| 5 | 153010 | 6 | #6 Star Washer |
| 6 | 136048 | 1 | 1/8-Amp (Slo Blo) Fuse |
| 7 | 136017 | 1 | 3.5-Amp (Fast Acting) Fuse |
| 8 | 136019 | 1 | 1-Amp (Fast Acting) Fuse |

* For dryers manufactured between February 11, 1998 and June 26, 1998 with air jet added, use Part No. 137124 Phase 6 reversing microprocessor controller (computer) with air jet.

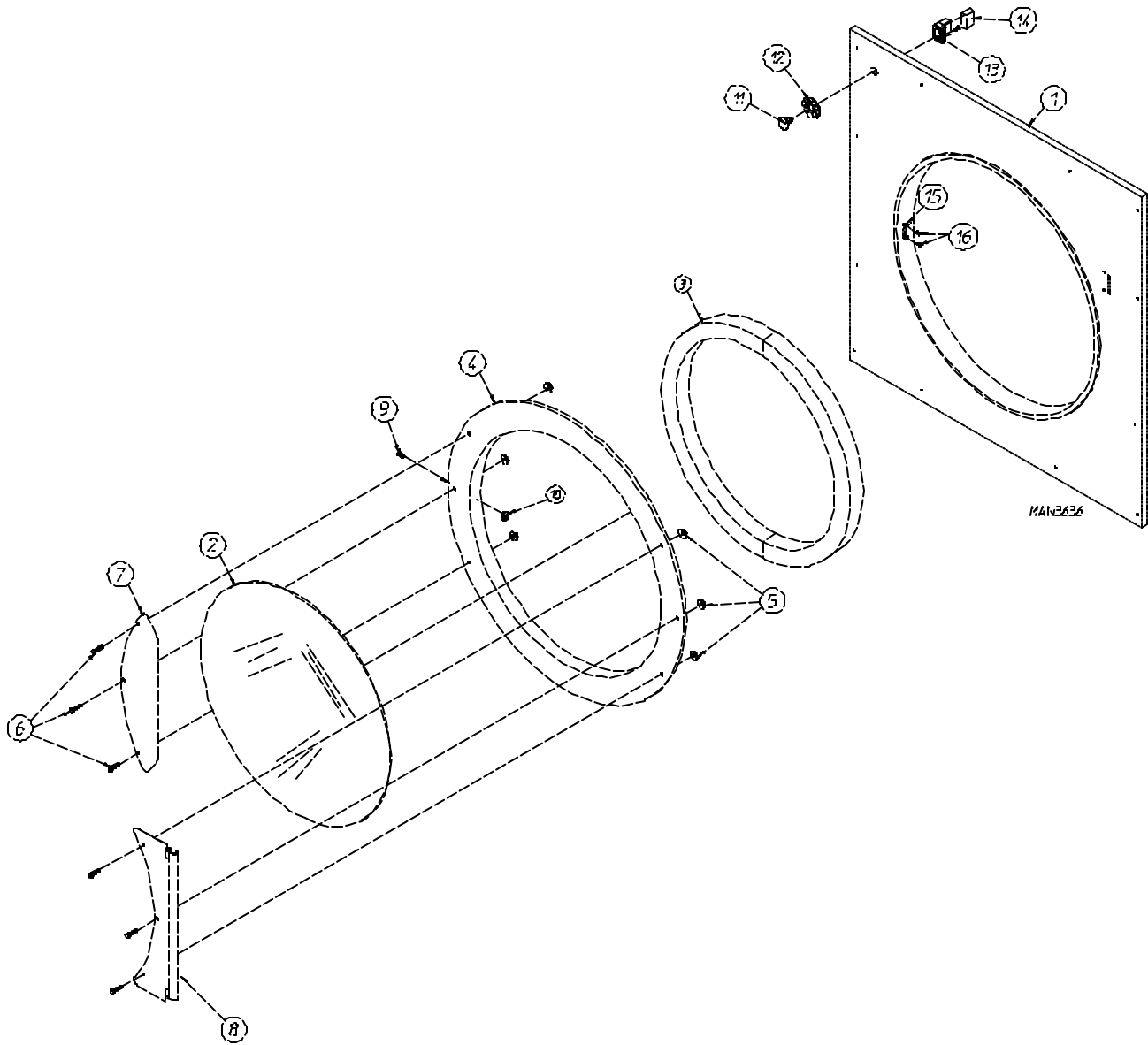
Prior to February 11, 1998



| <u>Illus. No.</u> | <u>Part No.</u> | <u>Qty.</u> | <u>Description</u> |
|-------------------|-----------------|-------------|---|
| 1 | 112537 | 1 | Phase 6 OPL Keyboard (touch pad) |
| | 112276 | 1 | OPL Stick-On Labels (English Only) Not Illustrated |
| | 112275 | 1 | 3 Language OPL Stick-On Labels (Spanish, Italian, and Hebrew) Not Illustrated |
| | 112277 | 1 | 3 Language OPL Stick-On Labels (English, Spanish, and Hebrew) Not Illustrated |
| | 112278 | 1 | 5 Language OPL Stick-On Labels (Italian, Dutch, French, German, and Chinese) Not Illustrated |
| 2 | 137116 | 1 | Phase 6 Microprocessor Controller (computer) |
| 3 | 137118 | 1 | Phase 6 OPL Input/Output (I/O) Board, Reversing |
| 4 | 137121 | 1 | 12" Ribbon Cable Assembly |
| 5 | 150005 | 6 | #6-32 x 3/4" Phillips Round Head Machine Screw |
| 6 | 153010 | 6 | #6 Star Washer |
| 7 | 881730 | 1 | Microprocessor Controller (computer) Panel ONLY |



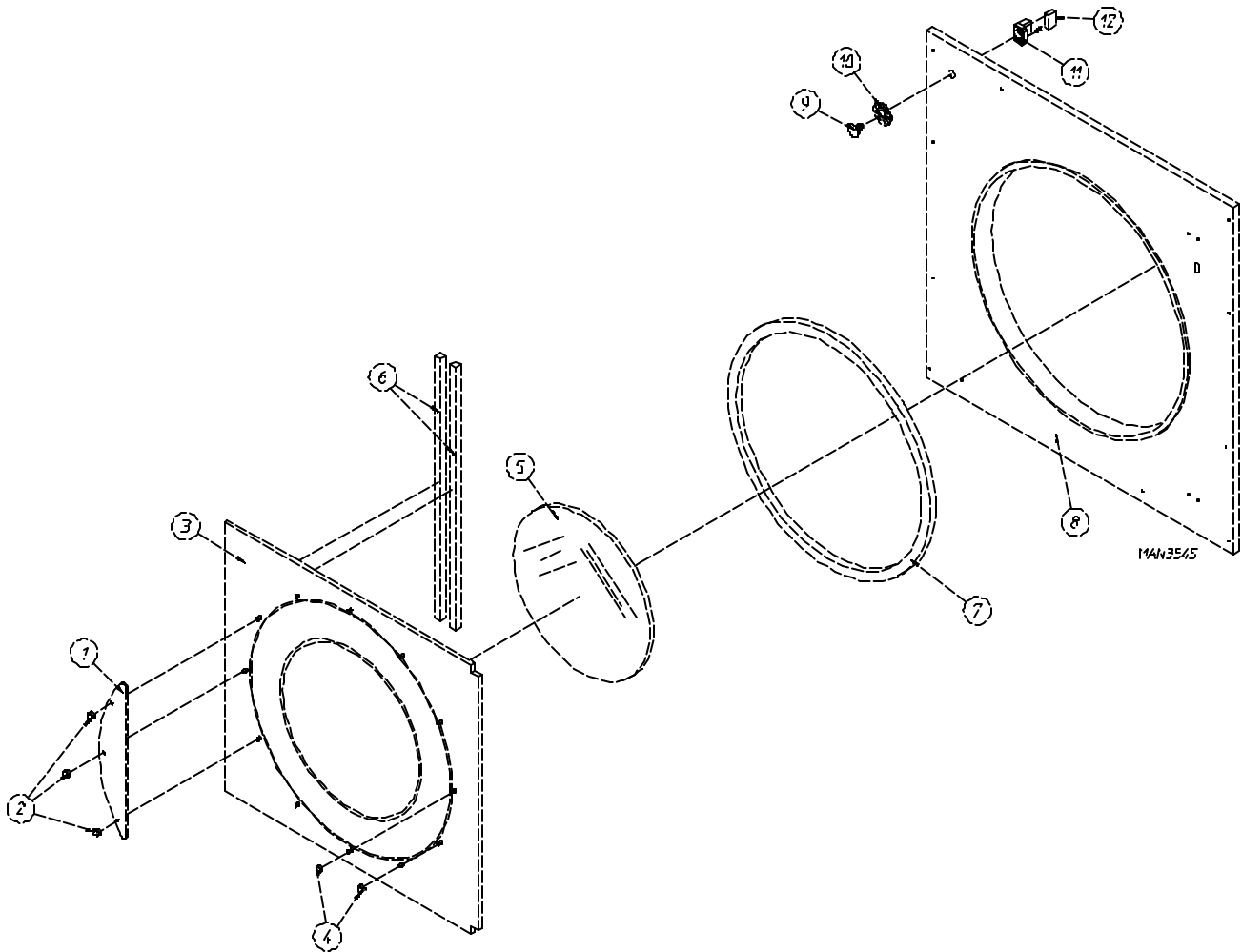
| <u>Illus. No.</u> | <u>Part No.</u> | <u>Qty.</u> | <u>Description</u> |
|-------------------|-----------------|-------------|---|
| 1 | 880251 | 1 | 1/4" Temperature Sensor Probe Assembly Complete (includes illus. nos. 1 and 5 through 8) |
| 2 | 130103 | 1 | 225° Large Automatic Thermostat ONLY |
| 3 | 153010 | 2 | #6 Star Washer |
| 4 | 152000 | 2 | #6-32 Hex Nut |
| 5 | 121028 | 2 | Insulated Terminal ONLY |
| 6 | 122701 | 4 | Socket Terminal ONLY |
| 7 | 122605 | 1 | 4-Pin Socket Connector ONLY |
| 8 | 154007 | 2 | 1/4" Tinnerman Push-on Fastener |
| 9 | 150005 | 2 | #6-32 x 1/4" Phillips Round Head Machine Screw |
| 10 | 881710 | 1 | Sensor Mounting Bracket Assembly Complete (includes illus. nos. 1 through 10) |
| | 390121 | 1 | Universal Sensor Bracket ONLY |
| 11 | 122604 | 1 | 4-Pin Connector ONLY |
| 12 | 122700 | 4 | Pin Terminal ONLY |
| 13 | 150301 | 2 | #8-18 x 7/16" Phillips Pan Head TEK Screw |



As of October 24, 1997

| <u>Illus. No.</u> | <u>Part No.</u> | <u>Qty.</u> | <u>Description</u> |
|-------------------|-----------------|-------------|---|
| 1 | 881804 | 1 | White Front Panel Assembly (includes illus. nos. 1, 15, and 16) For models mfd. as of December 3, 1997 |
| | 881696 | 1 | White Front Panel Assembly (includes illus. nos. 1, 15, and 16) For models mfd. prior to December 3, 1997 |
| | 881805 | 1 | Blue Front Panel Assembly (includes illus. nos. 1, 15, and 16) For models mfd. as of December 3, 1997 |
| | 881762 | 1 | Blue Front Panel Assembly (includes illus. nos. 1, 15, and 16) For models mfd. prior to December 3, 1997 |
| 2 | 102214 | 1 | 29-7/8" Door Glass |
| | 170730 | 1 | Door Glass Adhesive (10.3 oz. cartridge) |
| 3 | 102357 | 1 | Main Door Gasket |
| 4 | 881689 | 1 | White Main Door Assembly Complete (includes illus. nos. 2 through 10) |
| | 881761 | 1 | Blue Main Door Assembly Complete (includes illus. nos. 2 through 10) |
| | 881684 | 1 | White Main Door Ring |
| | 881756 | 1 | Blue Main Door Ring |
| 5 | 881806 | 6 | 1/4-20 Free Spin Wash Nut (White) |
| | 881807 | 6 | 1/4-20 Free Spin Wash Nut (Blue) |
| 6 | 881740 | 6 | 1/4-20 x 5/8" (White) Carriage Bolt |
| | 881739 | 6 | 1/4-20 x 5/8" (Blue) Carriage Bolt |
| 7 | 881688 | 1 | White Main Door Handle |
| | 881737 | 1 | Blue Main Door Handle |
| 8 | 881685 | 1 | White Main Door Hinge |
| | 881757 | 1 | Blue Main Door Hinge |
| 9 | 150120 | 1 | Main Door Latch Screw (#10-32 Dome Hex Head Screw) |
| 10 | 151010 | 1 | #10-32 Acorn Nut |
| 11 | 122351 | 1 | "EMERGENCY STOP" Push-Pull Button |
| 12 | 122419 | 1 | "EMERGENCY STOP" Nameplate |
| 13 | 132387 | 1 | Normally Closed (N.C.) Contact Block |
| 14 | 132395 | 1 | Normally Closed (N.C.) Contact Block with Base |
| 15 | 170330 | 1 | Friction Door Latch |
| 16 | 154215 | 2 | 5/32" Pop Rivet |

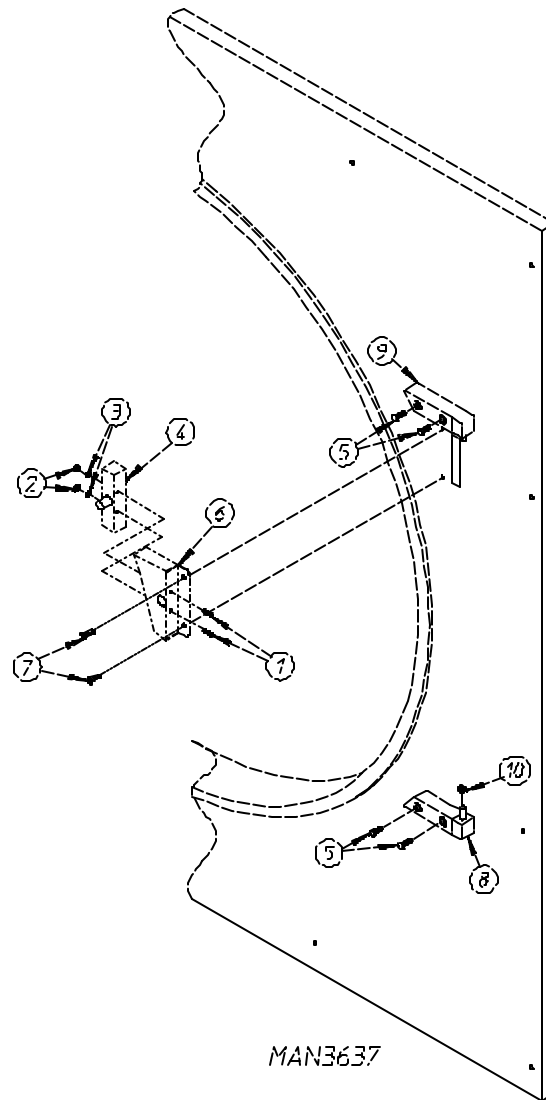
Prior to October 24, 1997



Prior to October 24, 1997

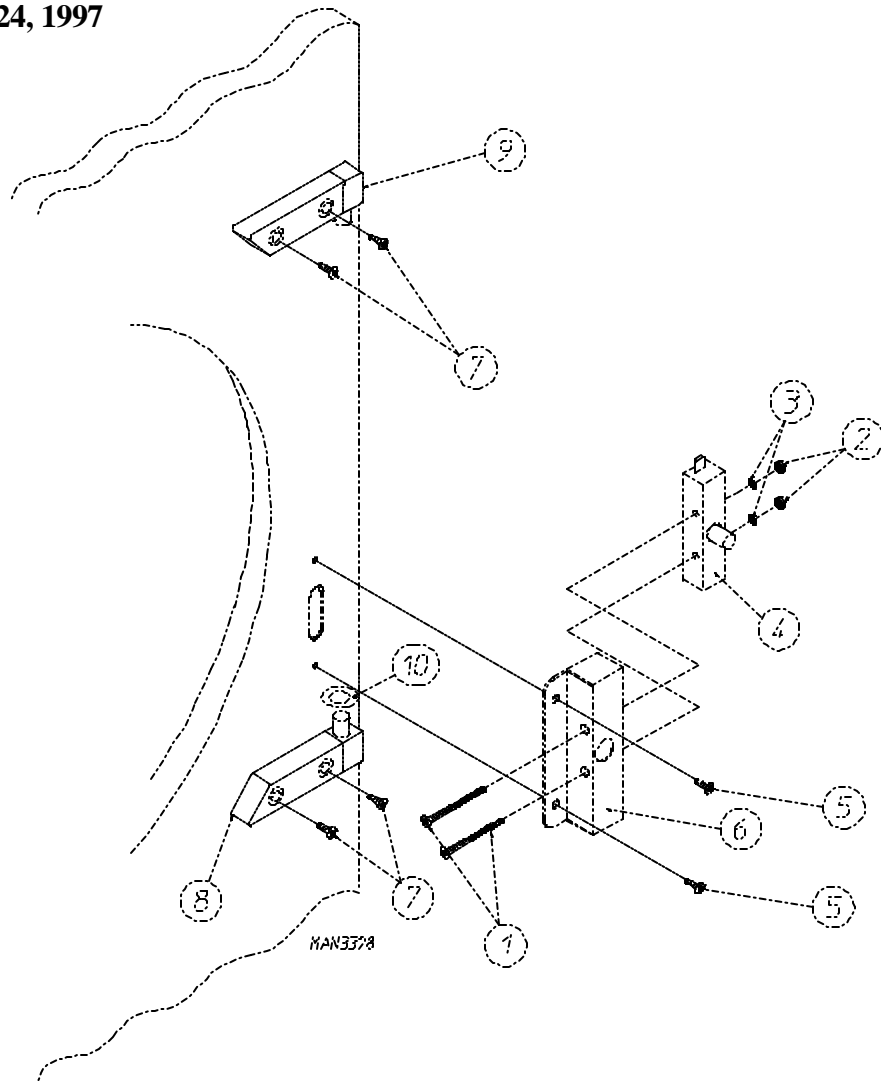
| <u>Illus. No.</u> | <u>Part No.</u> | <u>Qty.</u> | <u>Description</u> |
|-------------------|-----------------|-------------|--|
| 1 | 881741 | 1 | White Main Door Handle |
| | 881760 | 1 | Blue Main Door Handle |
| 2 | 151011 | 3 | 5/16-18 Acorn Nut |
| 3 | 881817 | 1 | White Front Panel/Main Door Assemblies with "EMERGENCY STOP" Button (includes illus. nos. 1 through 12) |
| | 881822 | 1 | Blue Front Panel/Main Door Assemblies with "EMERGENCY STOP" Button (includes illus. nos. 1 through 12) |
| | 881815 | 1 | White Front Panel/Main Door Assemblies without "EMERGENCY STOP" Button (includes illus. nos. 1 through 8) |
| | 881819 | 1 | Blue Front Panel/Main Door Assemblies without "EMERGENCY STOP" Button (includes illus. nos. 1 through 8) |
| 4 | 151011 | 9 | 5/16-18 Acorn Nut |
| 5 | 102210 | 1 | 20-7/16" Door Glass |
| | 170730 | 1 | Door Glass Adhesive (10.3 oz. cartridge) |
| 6 | 102112 | 2 | Door Magnet (5/16" x 1/4" x 34-3/4") |
| 7 | 102356 | 1 | Main Door Gasket (13-1/6" x 1-3/8" x 97-1/2") |
| 8 | 881729 | 1 | White Front Panel ONLY for "EMERGENCY STOP" |
| | 881824 | 1 | Blue Front Panel ONLY for "EMERGENCY STOP" |
| | 881728 | 1 | White Front Panel ONLY |
| | 881821 | 1 | Blue Front Panel ONLY |
| 9 | 122351 | 1 | "EMERGENCY STOP" Push-Pull Button |
| 10 | 122419 | 1 | "EMERGENCY STOP" Nameplate |
| 11 | 132387 | 1 | Normally Closed (N.C.) Contact Block |
| 12 | 132395 | 1 | Normally Closed (N.C.) Contact Block with Base |

As of October 24, 1997

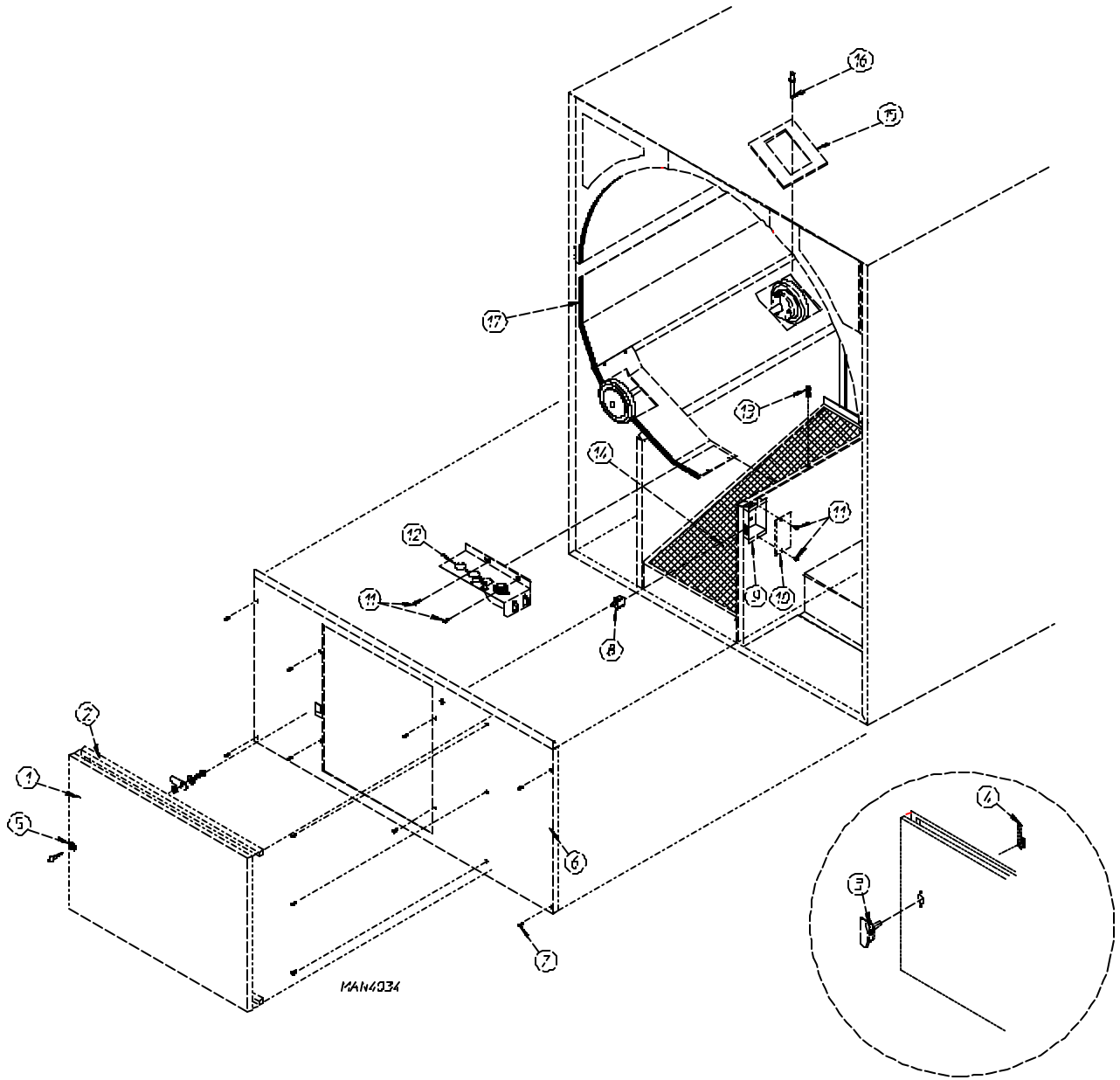


| <u>Illus. No.</u> | <u>Part No.</u> | <u>Qty.</u> | <u>Description</u> |
|-------------------|-----------------|-------------|--|
| 1 | 150006 | 2 | #6-32 x 7/8" Phillips Pan Head Machine Screw |
| 2 | 152013 | 2 | #6-32 Hex Nut |
| 3 | 153010 | 2 | #6 Star Washer |
| 4 | 137005 | 1 | Single Pole Door Switch |
| 5 | 150443 | 4 | 1/4-20 x 3/4" Stainless Steel Cap Screw |
| 6 | 881687 | 1 | White Main Door Switch Housing ONLY |
| | 881695 | 1 | Blue Main Door Switch Housing ONLY |
| | 881702 | 1 | White Main Door Switch with Housing Assembly (includes illus. nos. 1 through 4 and 6) |
| | 881700 | 1 | Blue Main Door Switch with Housing Assembly (includes illus. nos. 1 through 4 and 6) |
| 7 | 150443 | 2 | 1/4-20 x 3/4" Stainless Steel Cap Screw |
| 8 | 881441 | 1 | White Bottom Hinge Block |
| | 881735 | 1 | Blue Bottom Hinge Block |
| 9 | 881440 | 1 | White Top Hinge Block |
| | 881736 | 1 | Blue Top Hinge Block |
| 10 | 153031 | 1 | Nylon Washer |

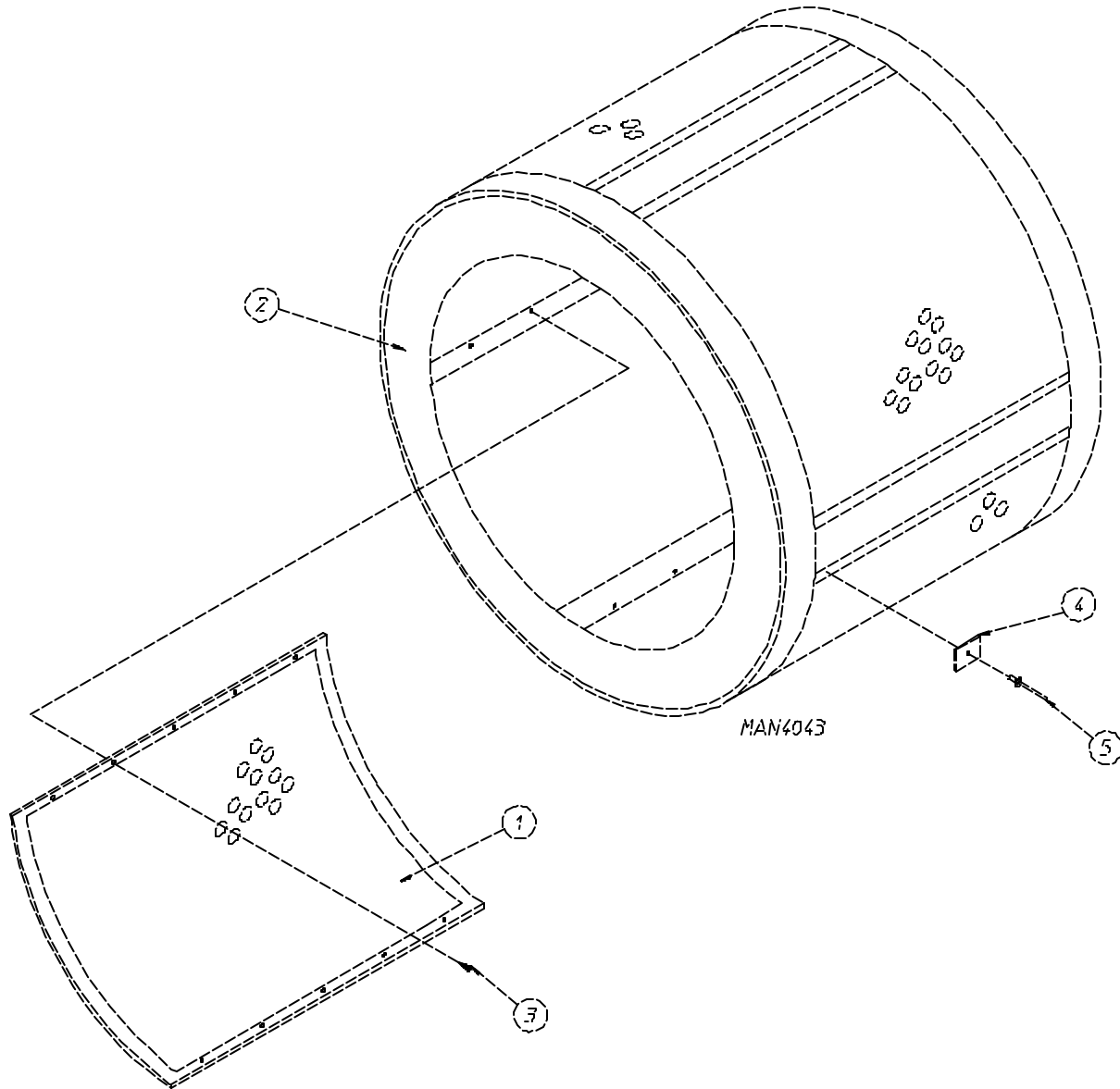
Prior to October 24, 1997



| <u>Illus. No.</u> | <u>Part No.</u> | <u>Qty.</u> | <u>Description</u> |
|-------------------|-----------------|-------------|--|
| 1 | 150006 | 2 | #6-32 x 7/8" Phillips Pan Head Machine Screw |
| 2 | 152013 | 2 | #6-32 Hex Nut |
| 3 | 153010 | 2 | #6 Star Washer |
| 4 | 137005 | 1 | Single Pole Door Switch |
| 5 | 150443 | 4 | 1/4-20 x 3/4" Stainless Steel Cap Screw |
| 6 | 881726 | 1 | White Main Door Switch Housing ONLY |
| | 881727 | 1 | Blue Main Door Switch Housing ONLY |
| | 881698 | 1 | White Main Door Switch with Housing Assembly (includes illus. nos. 1 through 4 and 6) |
| | 881699 | 1 | Blue Main Door Switch with Housing Assembly (includes illus. nos. 1 through 4 and 6) |
| 7 | 150443 | 2 | 1/4-20 x 3/4" Stainless Steel Cap Screw |
| 8 | 881441 | 1 | White Bottom Hinge Block |
| | 881735 | 1 | Blue Bottom Hinge Block |
| 9 | 881440 | 1 | White Top Hinge Block |
| | 881736 | 1 | Blue Top Hinge Block |
| 10 | 153031 | 1 | Nylon Washer |

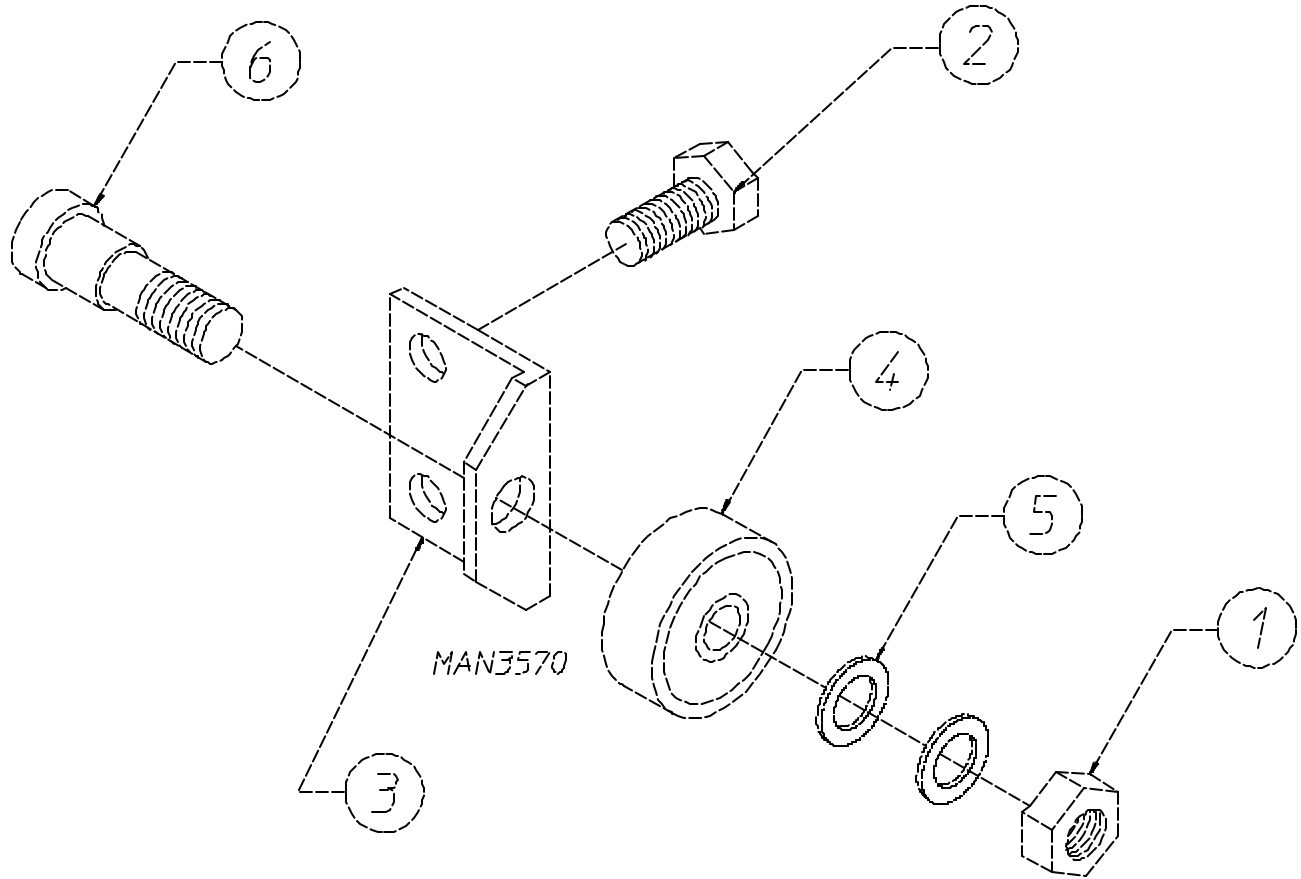


| <u>Illus. No.</u> | <u>Part No.</u> | <u>Qty.</u> | <u>Description</u> |
|-------------------|-----------------|-------------|---|
| 1 | 882115 | 1 | White Lint Door Assembly ONLY (includes illus. nos. 1 and 2) |
| | 881724 | 1 | White Lint Door and Panel Assembly for models with Knob Latch (includes illus. nos. 1, 2, and 6) |
| | 882114 | 1 | Blue Lint Door Assembly ONLY (includes illus. nos. 1 and 2) |
| | 881811 | 1 | Blue Lint Door and Panel Assembly for models with Knob Latch (includes illus. nos. 1, 2, and 6) |
| | 881725 | 1 | White Lint Door Assembly for models with Door Lock (includes illus. nos. 1, 2, and 6) |
| | 881812 | 1 | Blue Lint Door Assembly for models with Door Lock (includes illus. nos. 1, 2, and 6) |
| 2 | 117605 | 6 | 1/4" Noise Suppressor Tape (sold by the foot) |
| 3 | 800150 | 1 | Knob Latch Kit (includes illus. nos. 3 and 4) |
| 4 | 160009 | 1 | Lock Cam ONLY |
| 5 | 160001 | 1 | Lint Door Lock with Key |
| 6 | 881723 | 1 | White Lint Door Front Panel |
| | 881810 | 1 | Blue Lint Door Front Panel |
| 7 | 150309 | 11 | #10-16 x 1/2" Hex Head TEK Crimptite Screw |
| 8 | 122116 | 1 | Normally Open (N.O.) Lint Door Switch - 24 VAC |
| 9 | 300400 | 1 | Lint Door Switch Bracket |
| 10 | 390136 | 1 | Lint Door Switch Bracket Cover |
| 11 | 150301 | 2 | #8 x 7/16" Phillips Pan Head TEK Screw |
| 12 | ----- | 1 | Sensor Bracket (refer to Sensor Bracket Assembly on page 5) |
| 13 | 824807 | 1 | Rotational Sensor Assembly |
| 14 | 881734 | 1 | Lint Screen (15-7/8" x 37") with foam gasket For models mfd. as of August 22, 1997 |
| | 881733 | 1 | Lint Screen (16-3/8" x 37") with foam gasket For models mfd. prior to August 22, 1997 |
| 15 | 115900 | 3 | Drive Wheel Felt |
| 16 | 152000 | 12 | Pop Rivet |
| 17 | 102358 | 1 | Wrapper Gasket |



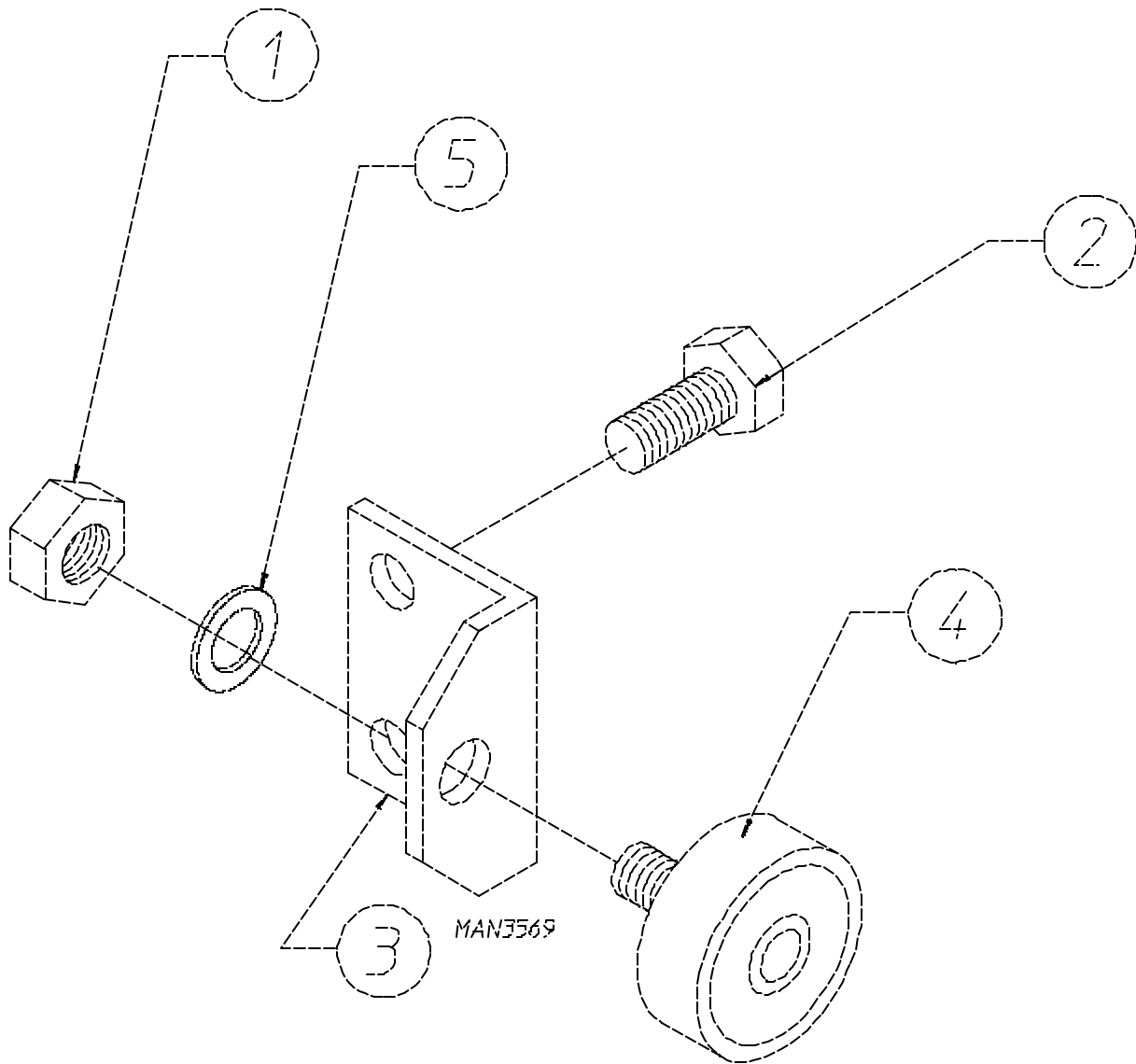
| <u>Illus. No.</u> | <u>Part No.</u> | <u>Qty.</u> | <u>Description</u> |
|-------------------|-----------------|-------------|---|
| 1 | 882100 | 4 | Basket (Tumbler) Side |
| | 170068 | 4 | Stainless Steel Basket (Tumbler) Side |
| 2 | 881722 | 1 | Basket (Tumbler) Assembly (includes illus. nos. 1 through 3) |
| | 881703 | 1 | Basket (Tumbler) (includes illus. nos. 2, 4, and 5) |
| | 881721 | 1 | Stainless Steel Basket (Tumbler) Assembly (includes illus. nos. 1 through 3) |
| | 881767 | 1 | Stainless Steel Basket (Tumbler) (includes illus. nos. 2, 4, and 5) |
| 3 | 150123 | 40 | 1/4-20 x 1/4" Socket Button Head Screw |
| 4 | 102102 | 1 | Rotational Sensor Magnet |
| 5 | 154200 | 1 | 5/32" Pop Rivet |

Between September 15, 1997 and April 6, 1998



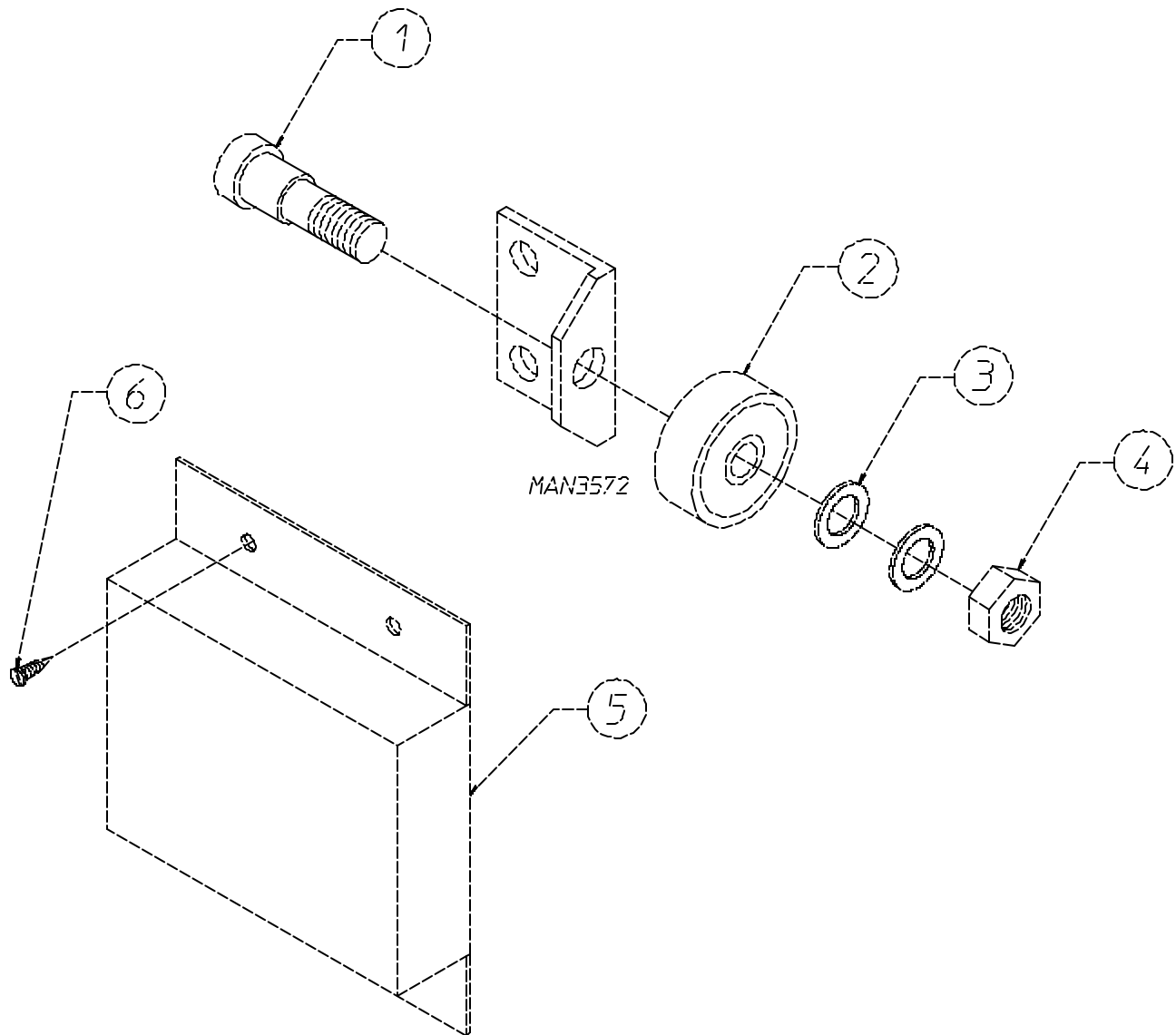
| <u>Illus. No.</u> | <u>Part No.</u> | <u>Qty.</u> | <u>Description</u> |
|-------------------|-----------------|-------------|---|
| 1 | 150220 | 2 | 3/8-24 Hex Nut (for models with 3/8" Hardware) |
| | 152004 | 2 | 5/16" Hex Nut (for models with 5/16" Hardware) |
| 2 | 150501 | 2 | 5/16-18 x 3/4" Hex Head Machine Bolt |
| 3 | 882096 | 2 | Front Thruster Wheel Bracket |
| 4 | ----- | 2 | Front Thruster Wheel Assembly Complete (discontinued) Use wheel assembly on page 19 |
| | ----- | 2 | Front Thruster Wheel with hardware (includes illus. nos. 1, 4, and 5) Use wheel assembly on page 19 |
| 5 | 153001 | 2 | 5/16" Flat Washer |
| 6 | 154277 | 2 | 5/16" x 3/8" Shoulder Bolt |

Prior to September 15, 1997



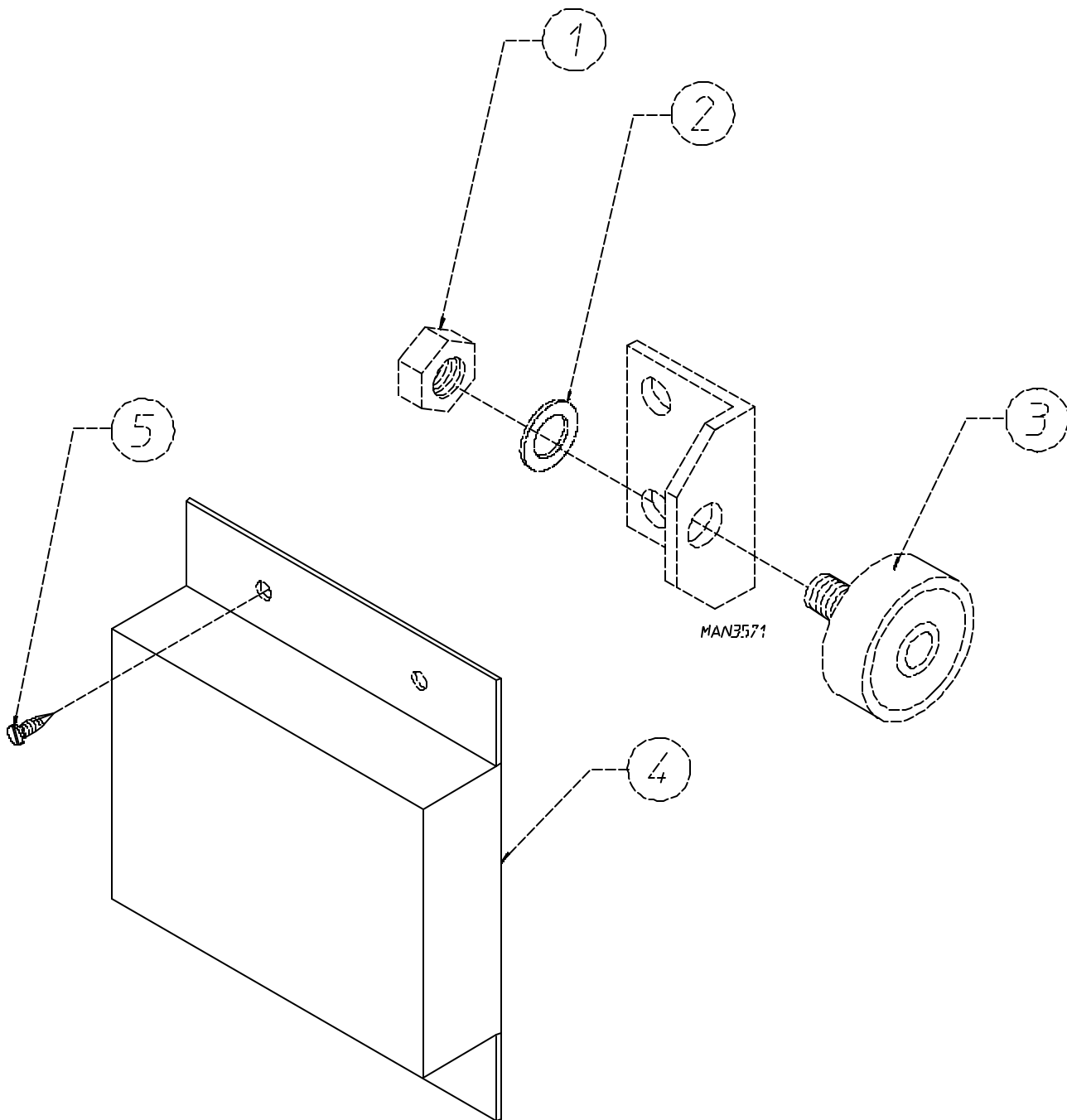
| <u>Illus. No.</u> | <u>Part No.</u> | <u>Qty.</u> | <u>Description</u> |
|-------------------|-----------------|-------------|--------------------------------------|
| 1 | 152004 | 1 | 5/16" Hex Nut |
| 2 | 150501 | 2 | 5/16-18 x 3/4" Hex Head Machine Bolt |
| 3 | 882097 | 1 | Front Thruster Wheel Bracket |
| 4 | 881758 | 1 | Front Thruster Wheel Assembly |
| | 180046 | 1 | Front Thruster Wheel ONLY |
| 5 | 153001 | 1 | 5/16" Flat Washer |

Between September 15, 1997 and April 6, 1998



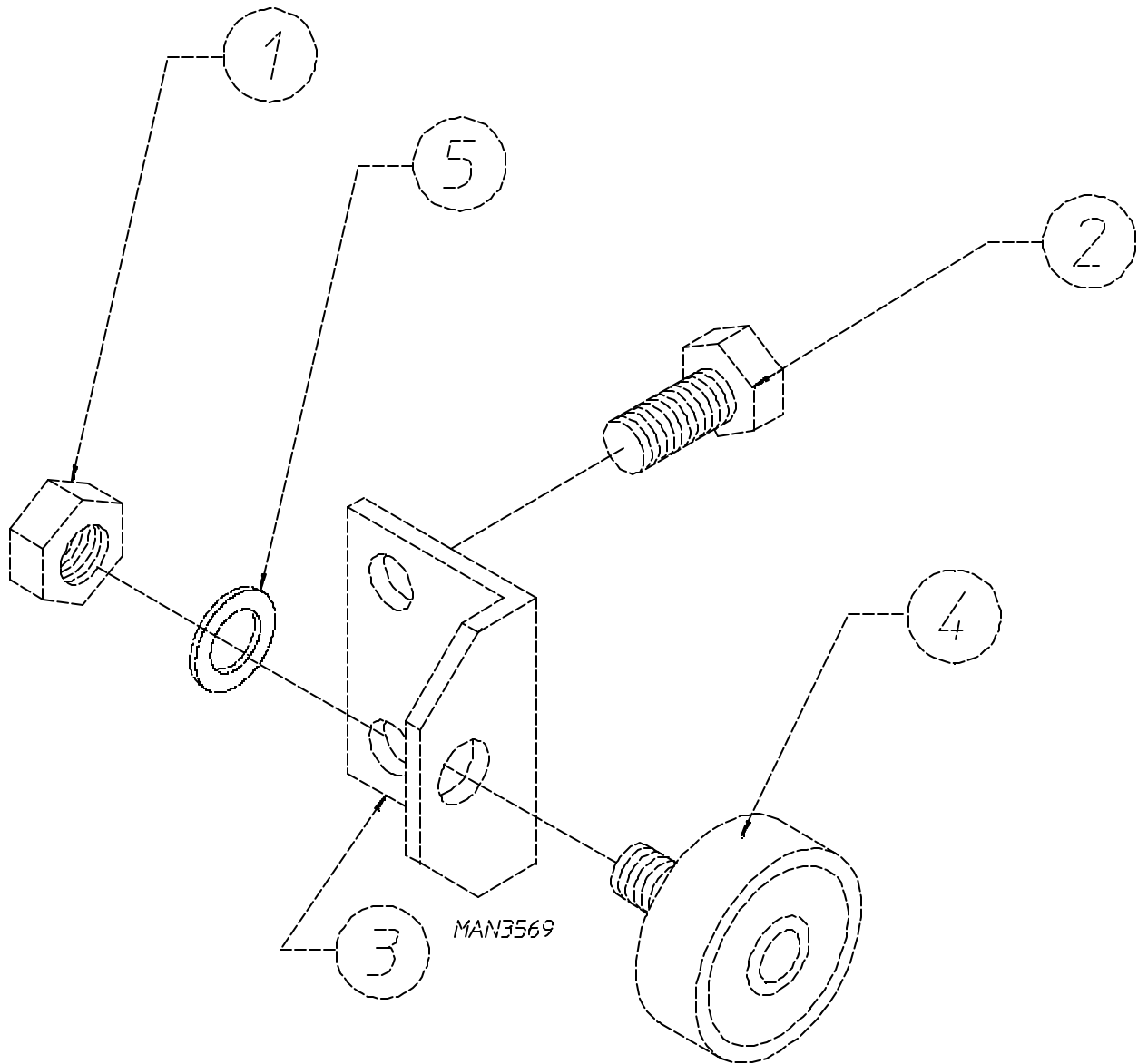
| <u>Illus. No.</u> | <u>Part No.</u> | <u>Qty.</u> | <u>Description</u> |
|-------------------|-----------------|-------------|---|
| 1 | 154277 | 1 | 5/16" x 3/8" Shoulder Bolt |
| 2 | ----- | 1 | Rear Thruster Wheel with hardware (use wheel assembly on page 20) |
| 3 | 153001 | 2 | 5/16" Flat Washer |
| 4 | 150220 | 2 | 3/8-24 Hex Nut (for models with 3/8" Hardware) |
| | 152004 | 2 | 5/16" Hex Nut (for models with 5/16" Hardware) |
| 5 | 881752 | 1 | White Rear Thruster Wheel Cover |
| | 881753 | 1 | Blue Rear Thruster Wheel Cover |
| 6 | 150301 | 4 | #8-18 x 7/16" Phillips Pan Head TEK Screw |

Prior to September 15, 1997

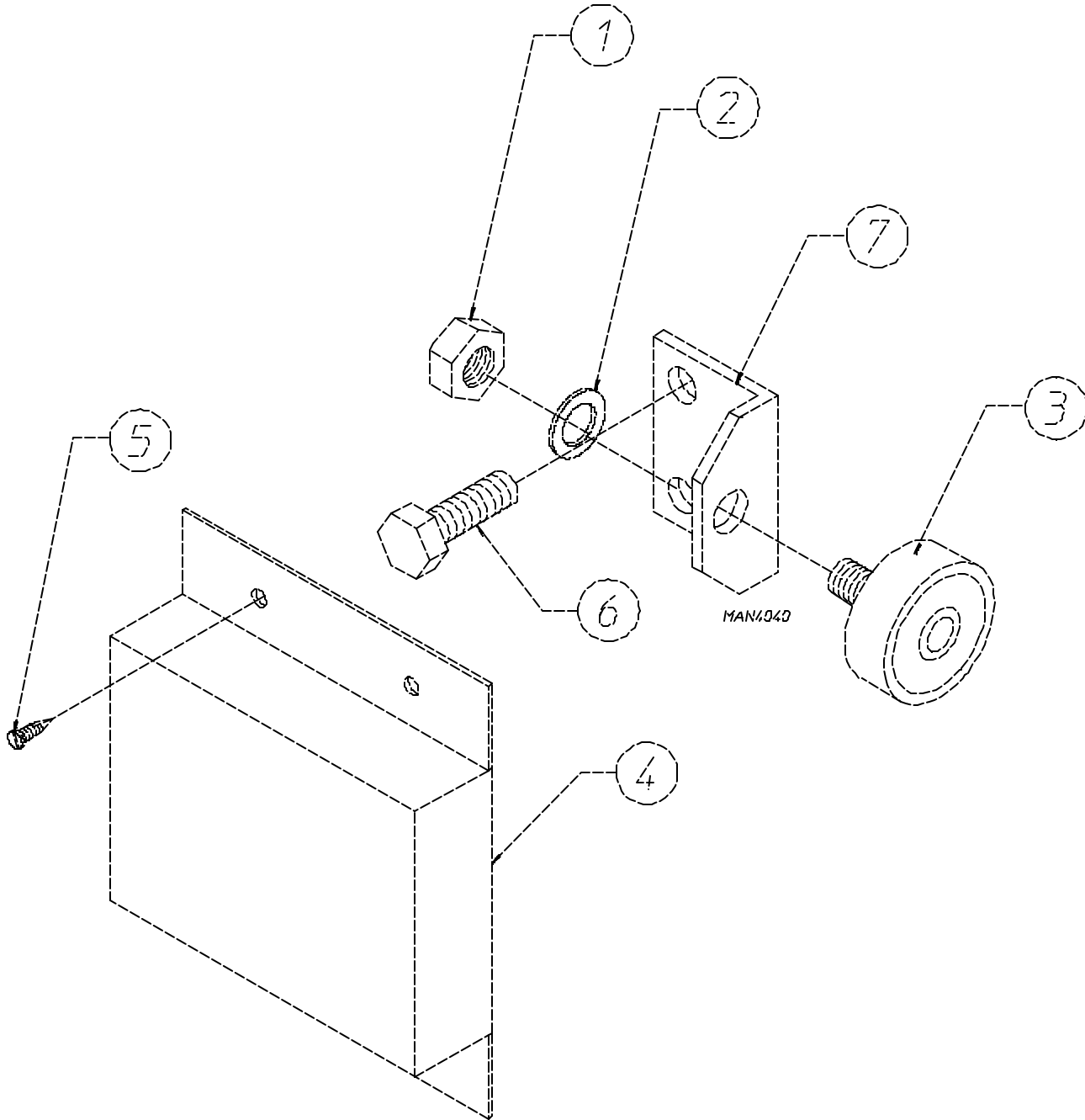


| <u>Illus. No.</u> | <u>Part No.</u> | <u>Qty.</u> | <u>Description</u> |
|-------------------|-----------------|-------------|---|
| 1 | 152004 | 1 | 5/16" Hex Nut |
| 2 | 153001 | 1 | 5/16" Flat Washer |
| 3 | 180046 | 1 | Rear Thruster Wheel ONLY |
| 4 | 881752 | 1 | White Rear Thruster Wheel Cover |
| | 881753 | 1 | Blue Rear Thruster Wheel Cover |
| 5 | 150301 | 4 | #8-18 x 7/16" Phillips Pan Head TEK Screw |

As of April 6, 1998

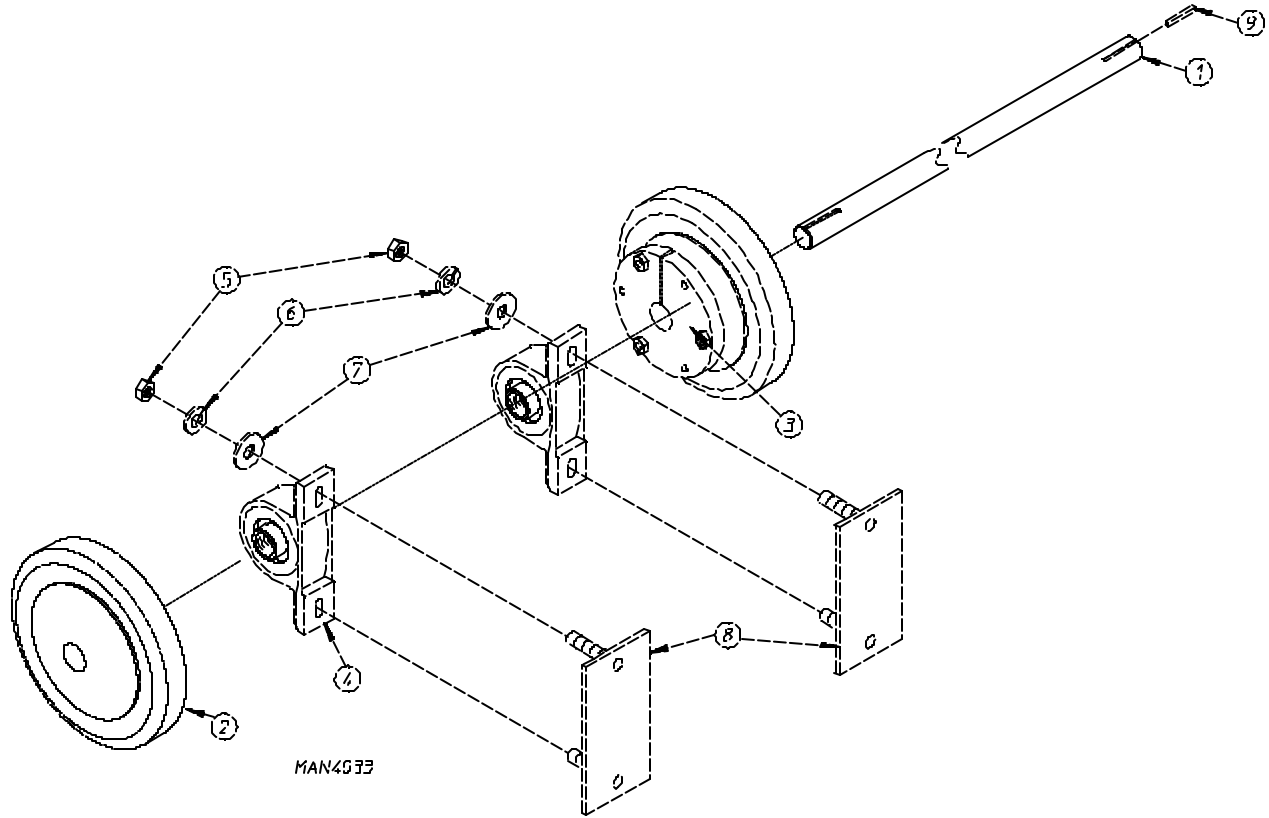


| <u>Illus. No.</u> | <u>Part No.</u> | <u>Qty.</u> | <u>Description</u> |
|-------------------|-----------------|-------------|--|
| 1 | 150220 | 1 | 3/8-24 Hex Nut |
| 2 | 150501 | 2 | 5/16-18 x 3/4" Hex Head Machine Bolt |
| 3 | 882096 | 1 | Front Thruster Wheel Bracket |
| 4 | 881720 | 1 | Front Thruster Wheel Assembly (includes illus. nos. 1 and 3 through 5) |
| | 881988 | 1 | Front Thruster Wheel ONLY (includes illus. nos. 1, 4, and 5) |
| 5 | 153001 | 1 | 5/16" Flat Washer |



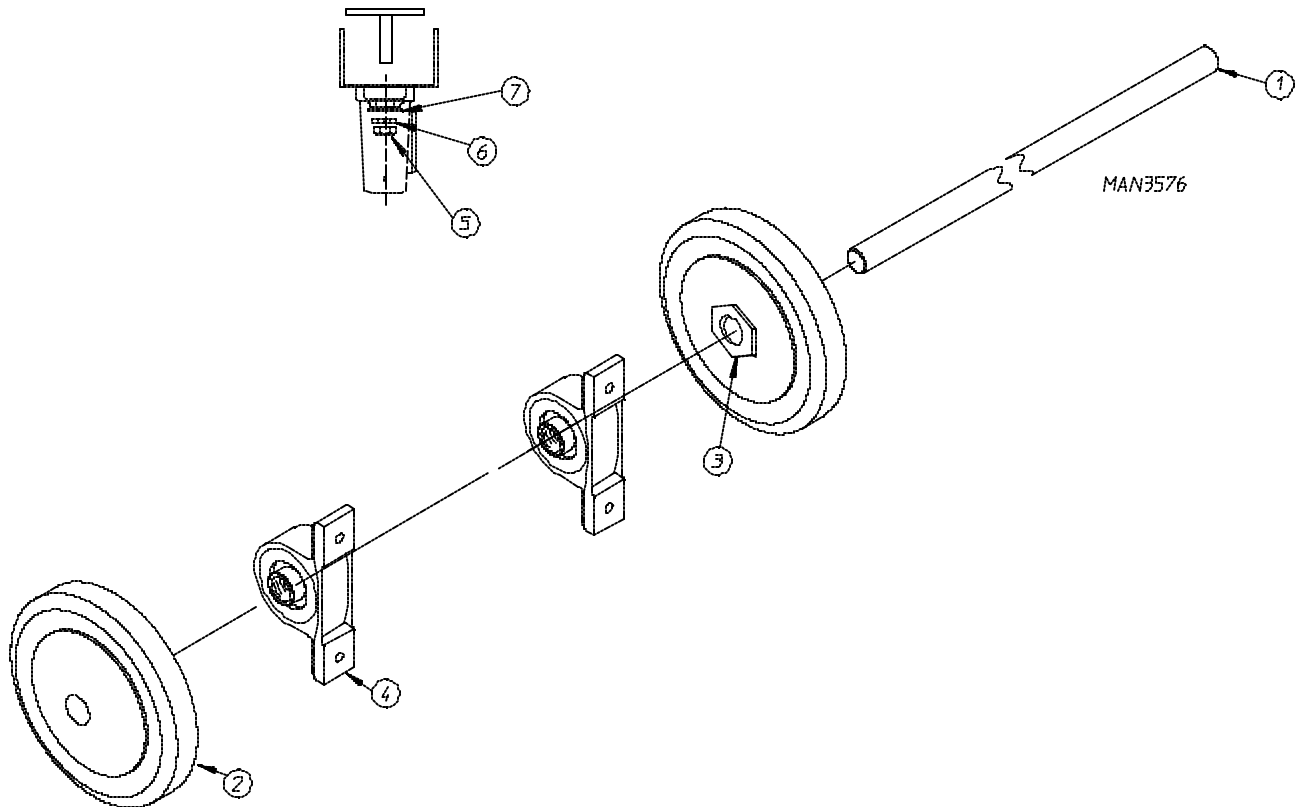
| <u>Illus. No.</u> | <u>Part No.</u> | <u>Qty.</u> | <u>Description</u> |
|-------------------|-----------------|-------------|--|
| 1 | 150220 | 1 | 3/8-24 Hex Nut |
| 2 | 153001 | 1 | 5/16" Flat Washer |
| 3 | 881988 | 1 | Front Thruster Wheel ONLY (includes illus. nos. 1 through 3) |
| 4 | 881752 | 1 | White Rear Thruster Wheel Cover |
| | 881753 | 2 | Blue rear Thruster Wheel Cover |
| 5 | 150301 | 4 | #8-18 x 7/16" Phillips Pan Head Screw |
| 6 | 150501 | 2 | 5/16-18 x 3/4" Hex Head Machine Bolt |
| 7 | 882096 | 2 | Front Thruster Wheel Bracket |

As of December 15, 1997



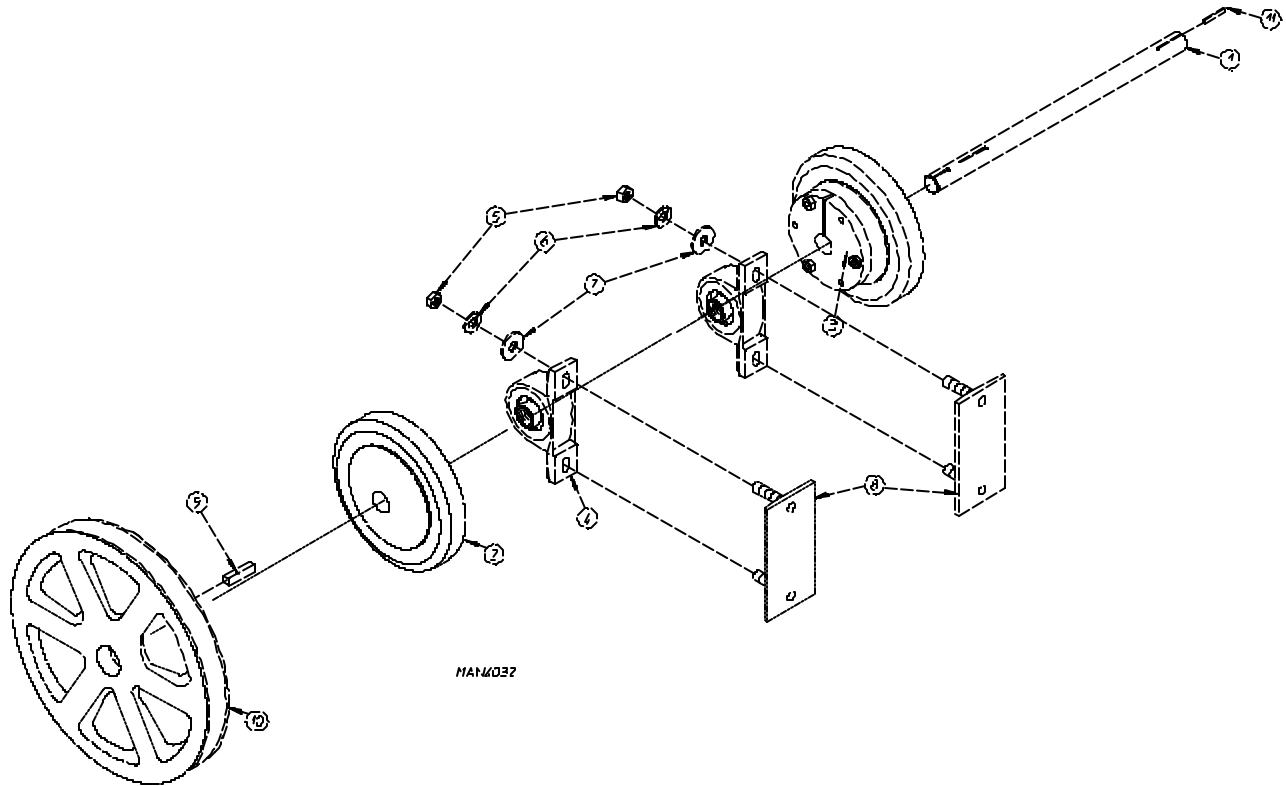
| <u>Illus. No.</u> | <u>Part No.</u> | <u>Qty.</u> | <u>Description</u> |
|-------------------|-----------------|-------------|--|
| 1 | 881825 | 1 | Idler Shaft Assembly Complete (includes illus. nos. 1 through 7) For models mfd. as of December 15, 1997 |
| | 390134 | 1 | Drive Shaft ONLY |
| 2 | 180037 | 2 | 6" Drive Wheel |
| 3 | 180038 | 2 | 1" Taperlock |
| 4 | 880205 | 2 | 1" Pillow Block Bearing |
| 5 | 152004 | 4 | 5/16-18 Hex Nut |
| 6 | 153002 | 4 | 5/16" Lock Washer |
| 7 | 153001 | 4 | 5/16" Flat Washer |
| 8 | 859008 | 2 | Bearing Bolt Plate Assembly |
| 9 | 100704 | 2 | 1/4" x 1/4" x 1 3/4" Key |

Prior to December 15, 1997

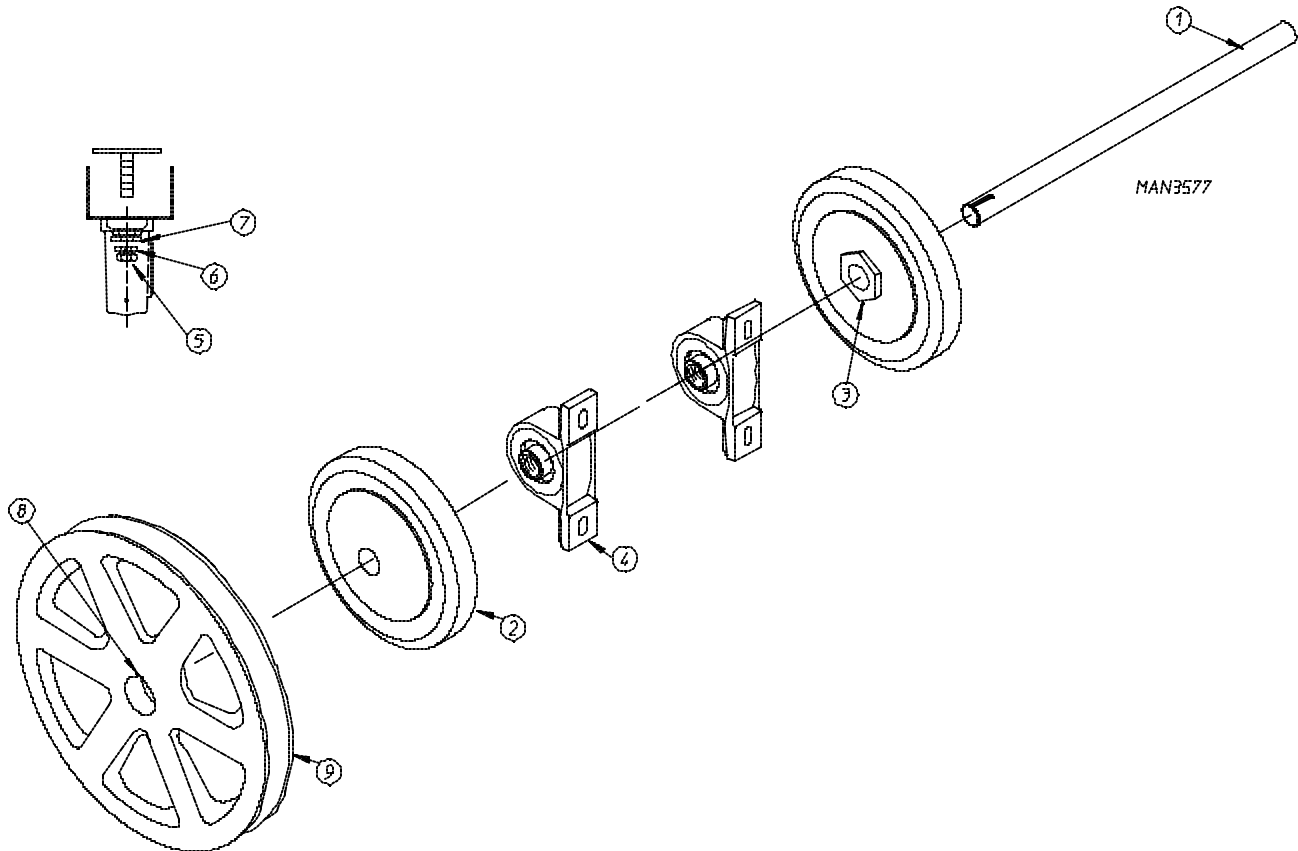


| <u>Illus. No.</u> | <u>Part No.</u> | <u>Qty.</u> | <u>Description</u> |
|-------------------|-----------------|-------------|---|
| 1 | 881718 | 1 | Idler Shaft Assembly Complete (includes illus. nos. 1 through 7) For models mfd. prior to December 15, 1997 |
| | 390009 | 1 | Idler Shaft ONLY |
| 2 | 180039 | 2 | 6" Wheel |
| 3 | 180006 | 2 | 1" Trantorque |
| 4 | 100205 | 2 | 1" Pillow Block Bearing |
| 5 | 152004 | 4 | 5/16" Hex Nut |
| 6 | 153002 | 4 | 5/16" Lock Washer |
| 7 | 153001 | 4 | 5/16" Flat Washer |

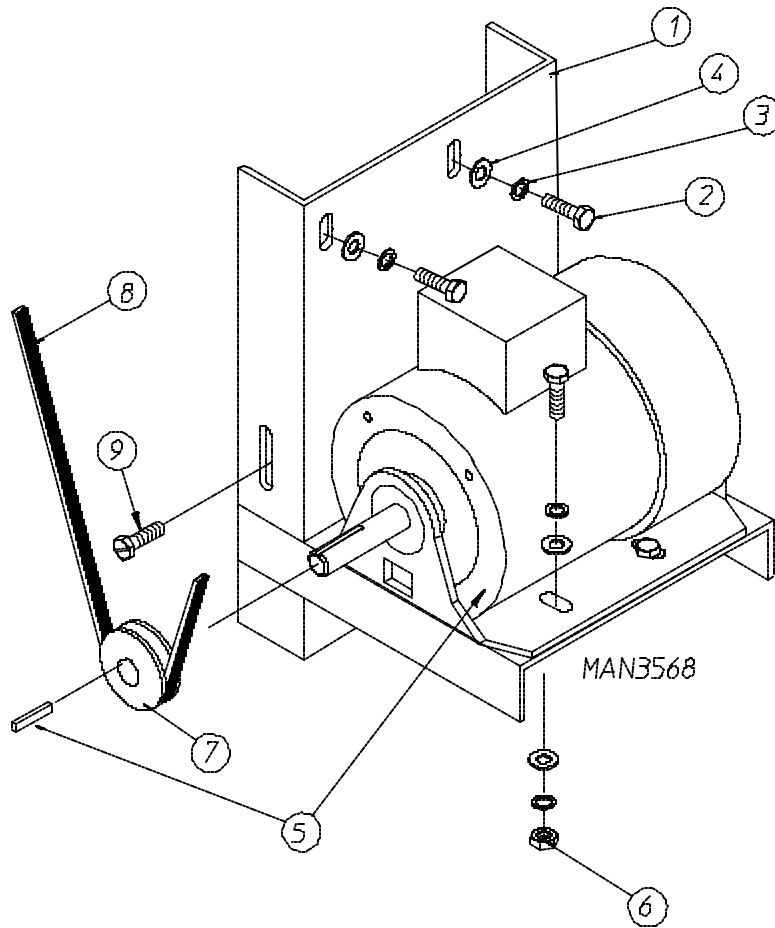
As of December 15, 1997



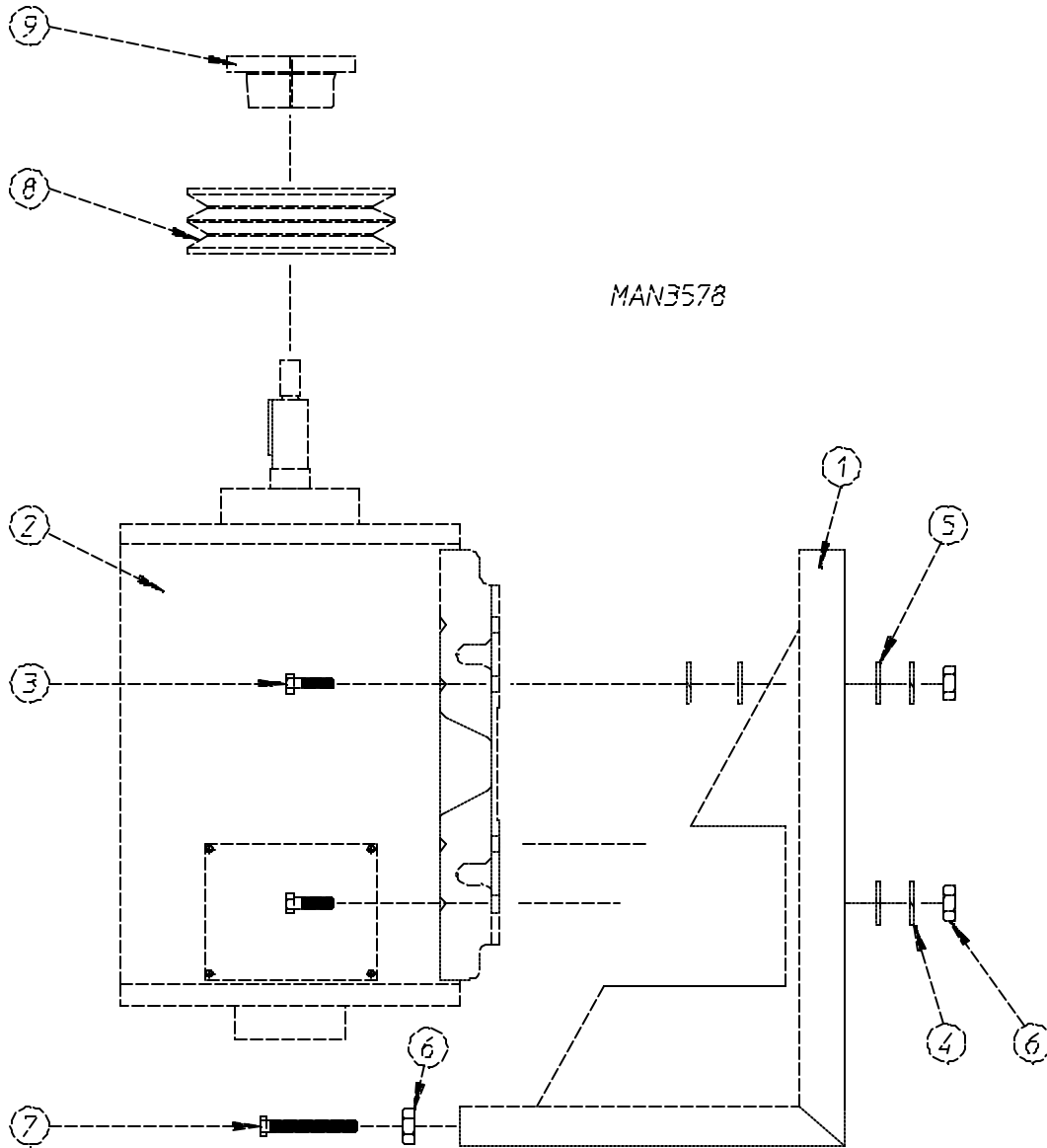
| <u>Illus. No.</u> | <u>Part No.</u> | <u>Qty.</u> | <u>Description</u> |
|-------------------|-----------------|-------------|---|
| 1 | 881826 | 1 | Drive Shaft Assembly Complete (includes illus. nos. 1 through 11) |
| | 390154 | 1 | Drive Shaft ONLY |
| 2 | 180037 | 2 | 6" Drive Wheel |
| 3 | 180038 | 2 | 1" Taperlock |
| 4 | 880205 | 2 | 1" Pillow Block Bearing |
| 5 | 152004 | 4 | 5/16"-18 Hex Nut |
| 6 | 153002 | 4 | 5/16" Lock Washer |
| 7 | 153001 | 4 | 5/16" Flat Washer |
| 8 | 859008 | 2 | Bearing Bolt Plate Assembly |
| 9 | 100700 | 1 | 1/4" x 1/4" x 1 1/16" Key |
| 10 | 101209 | 1 | 9" Pulley |
| 11 | 100704 | 2 | 1/4" x 1/4" x 1 3/4" Key |



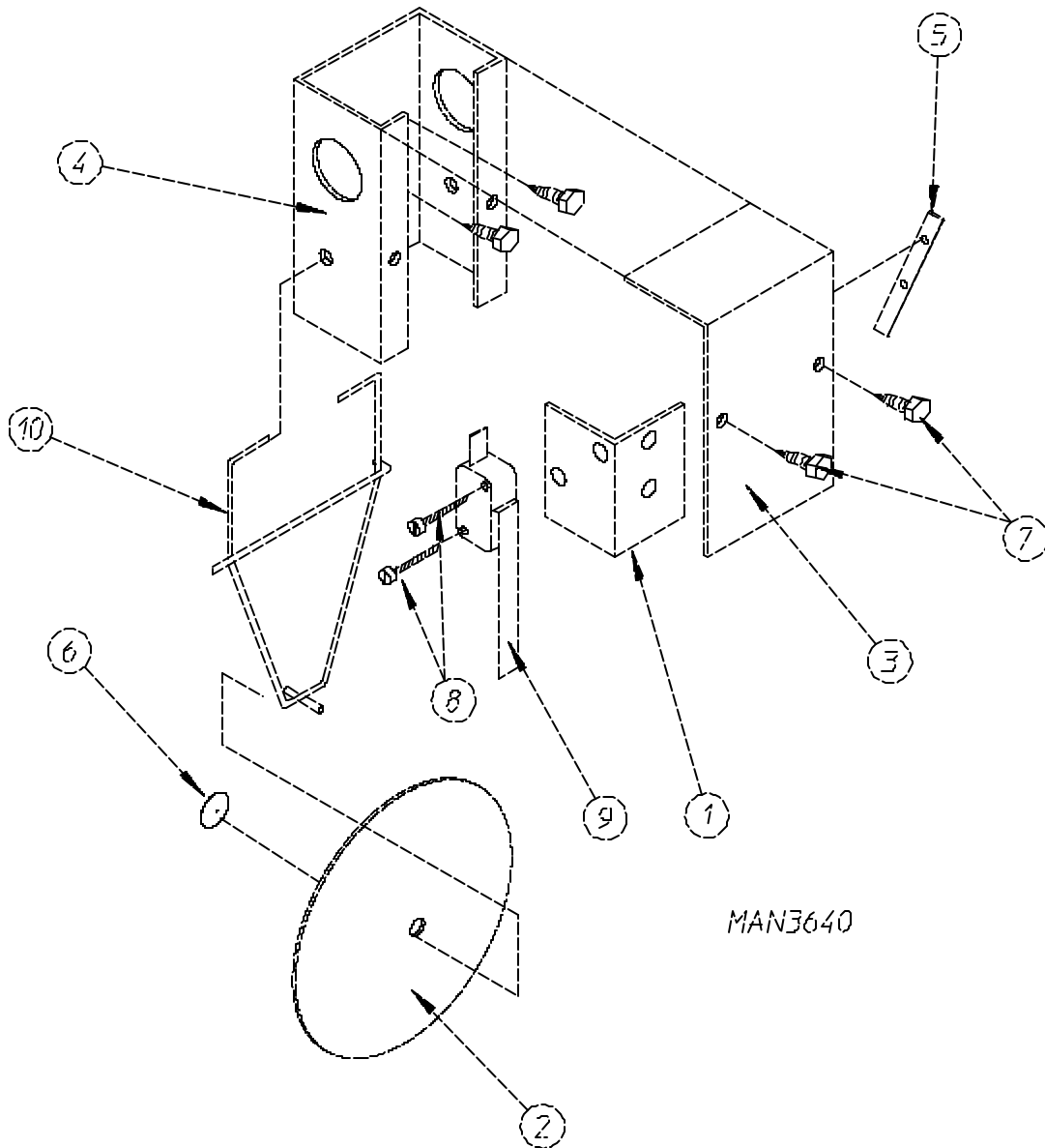
| <u>Illus. No.</u> | <u>Part No.</u> | <u>Qty.</u> | <u>Description</u> |
|-------------------|-----------------|-------------|---|
| 1 | 881717 | 1 | Drive Shaft Assembly Complete (includes illus. nos. 1 through 9) For models mfd. prior to December 15, 1997 |
| | 390008 | 1 | Drive Shaft ONLY |
| 2 | 180039 | 2 | 6" Wheel |
| 3 | 180006 | 2 | 1" Trantorque |
| 4 | 880205 | 2 | 1" Pillow Block Bearing |
| 5 | 152004 | 4 | 5/16" Hex Nut |
| 6 | 153002 | 4 | 5/16" Lock Washer |
| 7 | 153001 | 4 | 5/16" Flat Washer |
| 8 | 100700 | 1 | 1/4" x 1/4" x 1-1/16" Key |
| 9 | 101209 | 1 | 9" Pulley |



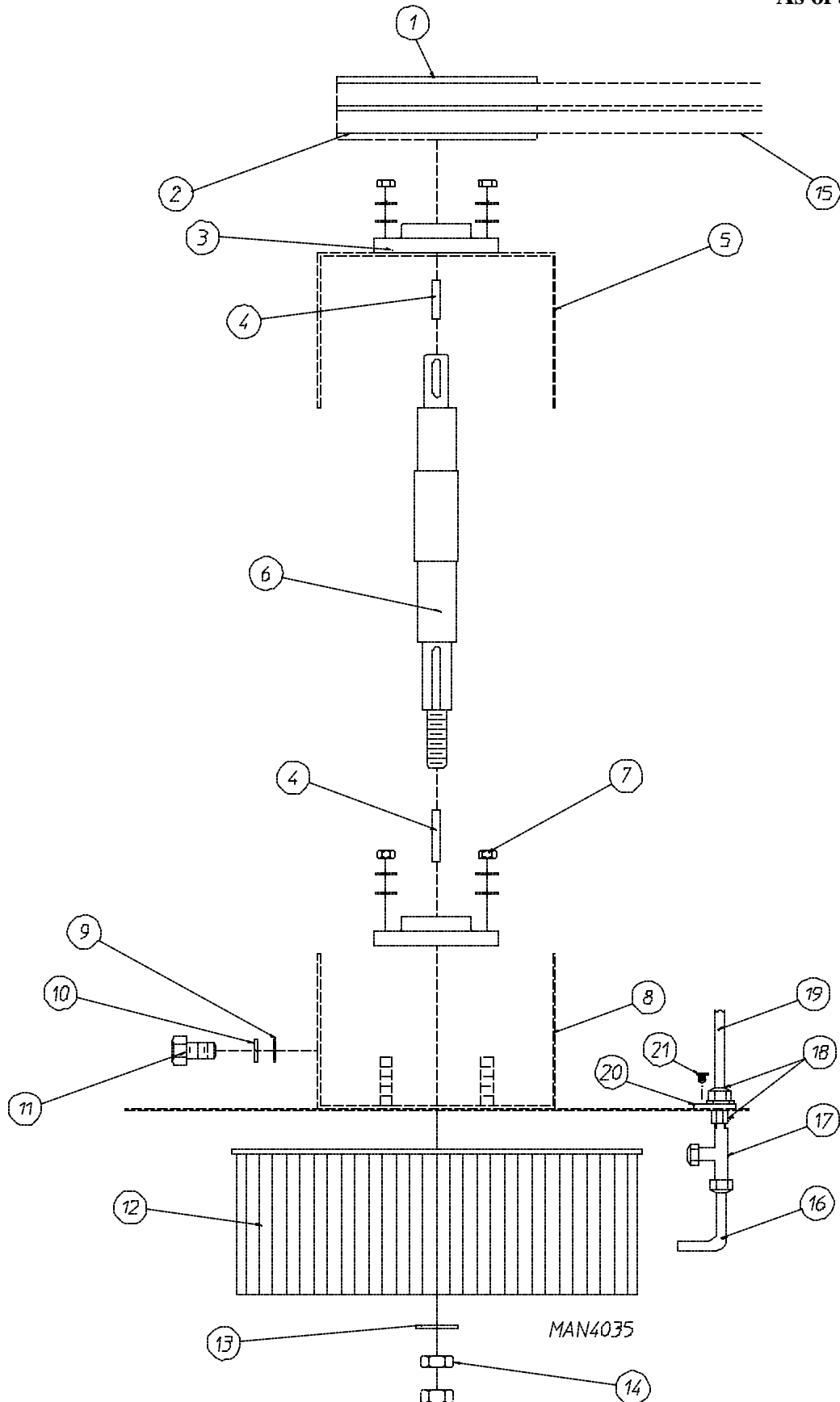
| <u>Illus. No.</u> | <u>Part No.</u> | <u>Qty.</u> | <u>Description</u> |
|-------------------|-----------------|-------------|---|
| 1 | 881715 | 1 | Drive Motor Assembly Complete - 60 Hz (includes illus. nos. 1 through 7 and 9) |
| | 881716 | 1 | Drive Motor Assembly Complete - 50 Hz (includes illus. nos. 1 through 7 and 9) |
| | 859012 | 1 | Drive Motor Mount Assembly ONLY |
| 2 | 150501 | 7 | 5/16-18 x 3/4" Hex Head Machine Bolt |
| 3 | 153002 | 11 | 5/16" Lock Washer |
| 4 | 153001 | 11 | 5/16" Flat Washer |
| 5 | 181106 | 1 | 1/2 HP / 3 ϕ / 50/60 Hz Totally Enclosed, Fan-Cooled (T.E.F.C.) Motor |
| 6 | 152004 | 4 | 5/16" Hex Nut |
| 7 | 101132 | 1 | 5/8" Bore x 2" Pulley - 60 Hz |
| | 101130 | 1 | 5/8" Bore x 2-1/2" Pulley - 50 Hz |
| 8 | 100174 | 1 | AX-53 Cogged Belt - 60 Hz (for models mfd. as of August 8, 1997) |
| | 100151 | 1 | AX-54 Cogged Belt - 60 Hz (for models mfd. prior to August 8, 1997) |
| | 100174 | 1 | AX-54 Cogged Belt - 50 Hz (for models mfd. as of May 13, 1998) |
| | 100175 | 1 | AX-55 Cogged Belt - 50 Hz (for models mfd. prior to May 13, 1998) |
| 9 | 150523 | 1 | 1/4-20 x 3/4" Hex Washer TEK Screw |



| Illus. No. | Part No. | Qty. | Description |
|------------|----------|------|---|
| 1 | 881713 | 1 | Blower (Fan/Impellor) Motor Assembly Complete - 60 Hz (includes illus. nos. 1 through 9) |
| | 881714 | 1 | Blower (Fan/Impellor) Motor Assembly Complete - 50 Hz (includes illus. nos. 1 through 9) |
| | 859039 | 1 | Blower (Fan/Impellor) Motor Slide Assembly ONLY |
| 2 | 181105 | 1 | 3 HP / 3 ϕ / 50/60 Hz Totally Enclosed, Non-Vent (T.E.N.V.) Motor |
| 3 | 150504 | 4 | 5/18-18 x 1" Hex Head Machine Bolt |
| 4 | 153002 | 8 | 5/16" Lock Washer |
| 5 | 153001 | 8 | 5/16" Flat Washer |
| 6 | 152004 | 6 | 5/16" Hex Nut |
| 7 | 150514 | 2 | 5/16-18 X 2-1/4" Hex Bolt |
| 8 | 101135 | 1 | 2B x 5.4 Pulley - 60 Hz |
| | 101185 | 1 | 2B x 6.2 Pulley - 50 Hz |
| 9 | 101194 | 1 | 1-3/8" x SDS Bushing |



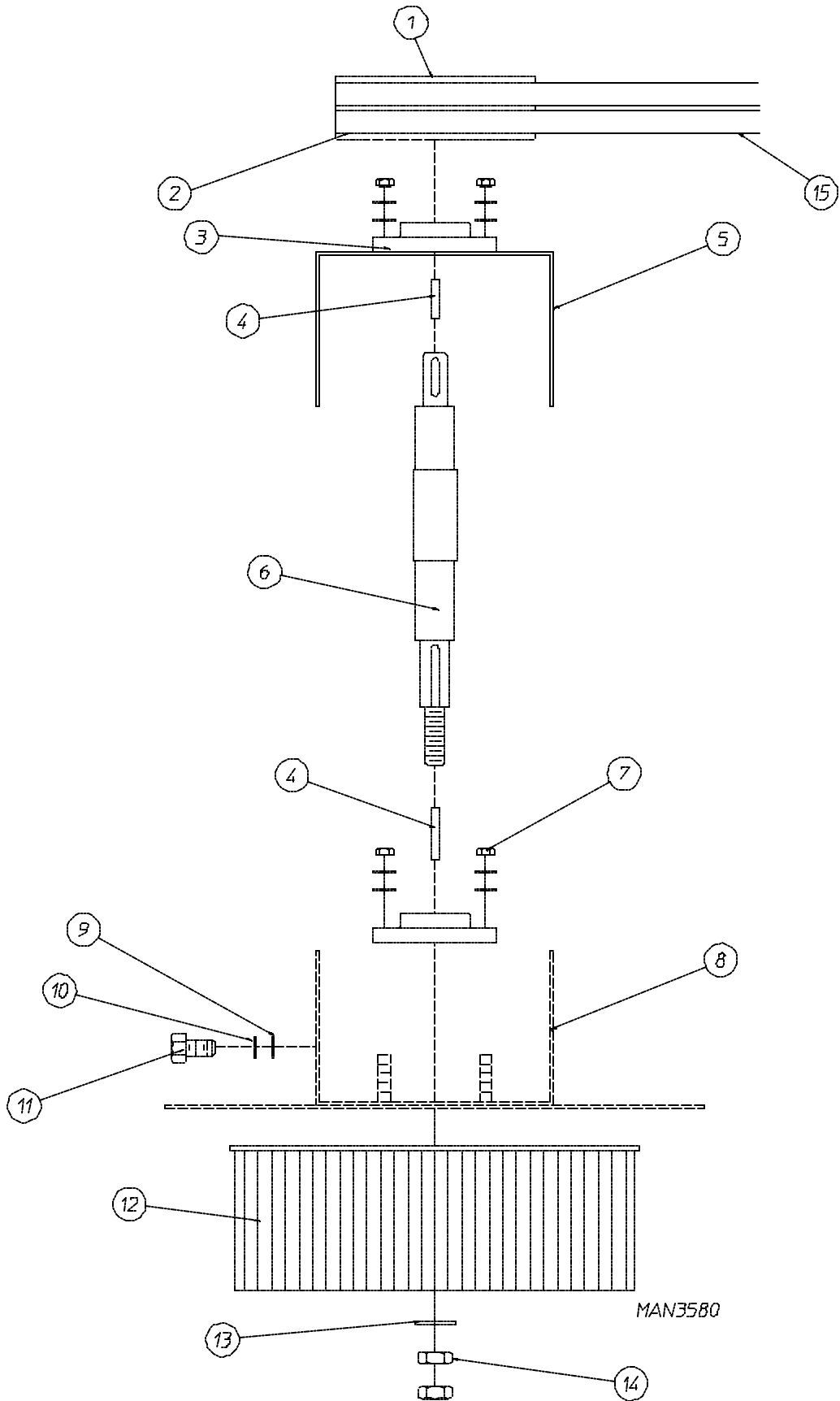
| <u>Illus. No.</u> | <u>Part No.</u> | <u>Qty.</u> | <u>Description</u> |
|-------------------|-----------------|-------------|--|
| 1 | 319203 | 1 | Sail Switch Mounting Bracket |
| 2 | 319202 | 1 | Sail Switch Damper (flat) |
| 3 | 319201 | 1 | Sail Switch Box Cover |
| 4 | 319200 | 1 | Sail Switch Box |
| 5 | 154004 | 1 | Twin Speed Nut |
| 6 | 154002 | 1 | 1/8" Push-on Fastener |
| 7 | 150309 | 4 | #10-16 x 1/2" Hex Head TEK Crimptite Screw |
| 8 | 150303 | 2 | #4 x 3/4" Pan Head "A" Machine Screw |
| 9 | 122200 | 1 | Sail Switch ONLY |
| | 881706 | 1 | Sail Switch Box Assembly Complete (includes illus. nos. 1 through 10) |
| 10 | 105500 | 1 | Sail Switch Actuator Rod |



As of July 1, 1998

| <u>Illus. No.</u> | <u>Part No.</u> | <u>Qty.</u> | <u>Description</u> |
|-------------------|-----------------|-------------|--|
| 1 | 101215 | 1 | 5/8" x SH Bushing |
| 2 | 101216 | 1 | 2B x 4.2 Pulley - 50/60 Hz |
| 3 | 100240 | 2 | 1" Flange Bearing |
| 4 | 100701 | 2 | 3/16" x 3/16" x 1" Key |
| 5 | 859014 | 1 | Idler Mount - Top |
| 6 | 390053 | 1 | Impellor (Fan/Blower) Shaft |
| 7 | 152004 | 8 | 5/16-18 Hex Nut |
| 8 | 859013 | 1 | Impellor (Fan/Blower) Cover |
| 9 | 153001 | 12 | 5/16" Flat Washer |
| 10 | 153002 | 12 | 5/16" Lock Washer |
| 11 | 150501 | 4 | 5/16-18 x 3/4" Hex Head Machine Bolt |
| 12 | 100615 | 1 | 9-15/16" x 5" Squirrel Cage Fan (Impellor/Blower) |
| | 881711 | 1 | Blower (Fan/Impellor) Wheel Assembly Complete - 60 Hz (includes illus. nos. 1 through 14) |
| | 881712 | 1 | Blower (Fan/Impellor) Wheel Assembly Complete - 50 Hz (includes illus. nos. 1 through 14) |
| 13 | 153050 | 1 | 1/2" Flat Washer |
| 14 | 152012 | 2 | 1/2-20 Hex Nut |
| 15* | 100149 | 2 | BX-44 Cogged Belt - 60 Hz |
| | 100176 | 2 | BX-46 Cogged Belt - 50 Hz |
| 16 | 143100 | 2.5" | 1/4" Aluminum Tubing |
| 17 | 143287 | 1 | Tee Fitting |
| 18 | 143259 | 2 | Bulkhead Fitting |
| 19 | 143110 | 9' | 1/4" Poly Flo Tubing |
| 20 | 882101 | 1 | Air Jet Mounting Plate |
| 21 | 150309 | 2 | #10-16 x 1/2 Hex Head Crimptite Screw |

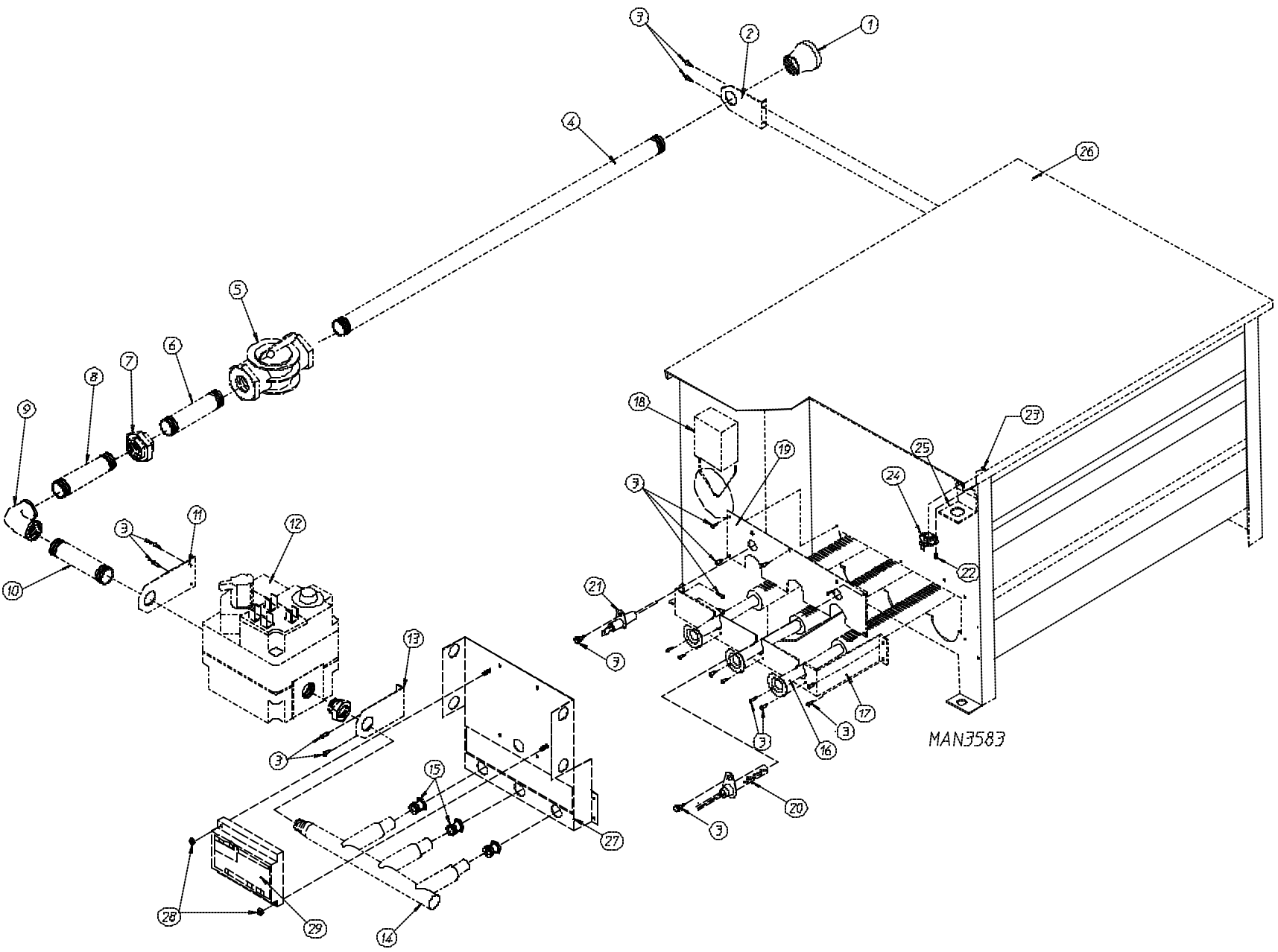
* Replace in matched sets (both belts).



Prior to July 1, 1998

| <u>Illus. No.</u> | <u>Part No.</u> | <u>Qty.</u> | <u>Description</u> |
|-------------------|-----------------|-------------|--|
| 1 | 101215 | 1 | 5/8" x SH Bushing |
| 2 | 101216 | 1 | 2B x 4.2 Pulley - 50/60 Hz |
| 3 | 100240 | 2 | 1" Flange Bearing |
| 4 | 100701 | 2 | 3/16" x 3/16" x 1" Key |
| 5 | 859014 | 1 | Idler Mount - Top |
| 6 | 390053 | 1 | Impellor (Fan/Blower) Shaft |
| 7 | 152004 | 8 | 5/16-18 Hex Nut |
| 8 | 859013 | 1 | Impellor (Fan/Blower) Cover |
| 9 | 153001 | 12 | 5/16" Flat Washer |
| 10 | 153002 | 12 | 5/16" Lock Washer |
| 11 | 150501 | 4 | 5/16-18 x 3/4" Hex Head Machine Bolt |
| 12 | 100615 | 1 | 9-15/16" x 5" Squirrel Cage Fan (Impellor/Blower) |
| | 881711 | 1 | Blower (Fan/Impellor) Wheel Assembly Complete - 60 Hz (includes illus. nos. 1 through 14) |
| | 881712 | 1 | Blower (Fan/Impellor) Wheel Assembly Complete - 50 Hz (includes illus. nos. 1 through 14) |
| 13 | 153050 | 1 | 1/2" Flat Washer |
| 14 | 152012 | 2 | 1/2-20 Hex Nut |
| 15* | 100149 | 2 | BX-44 Cogged Belt - 60 Hz |
| | 100176 | 2 | BX-46 Cogged Belt - 50 Hz |

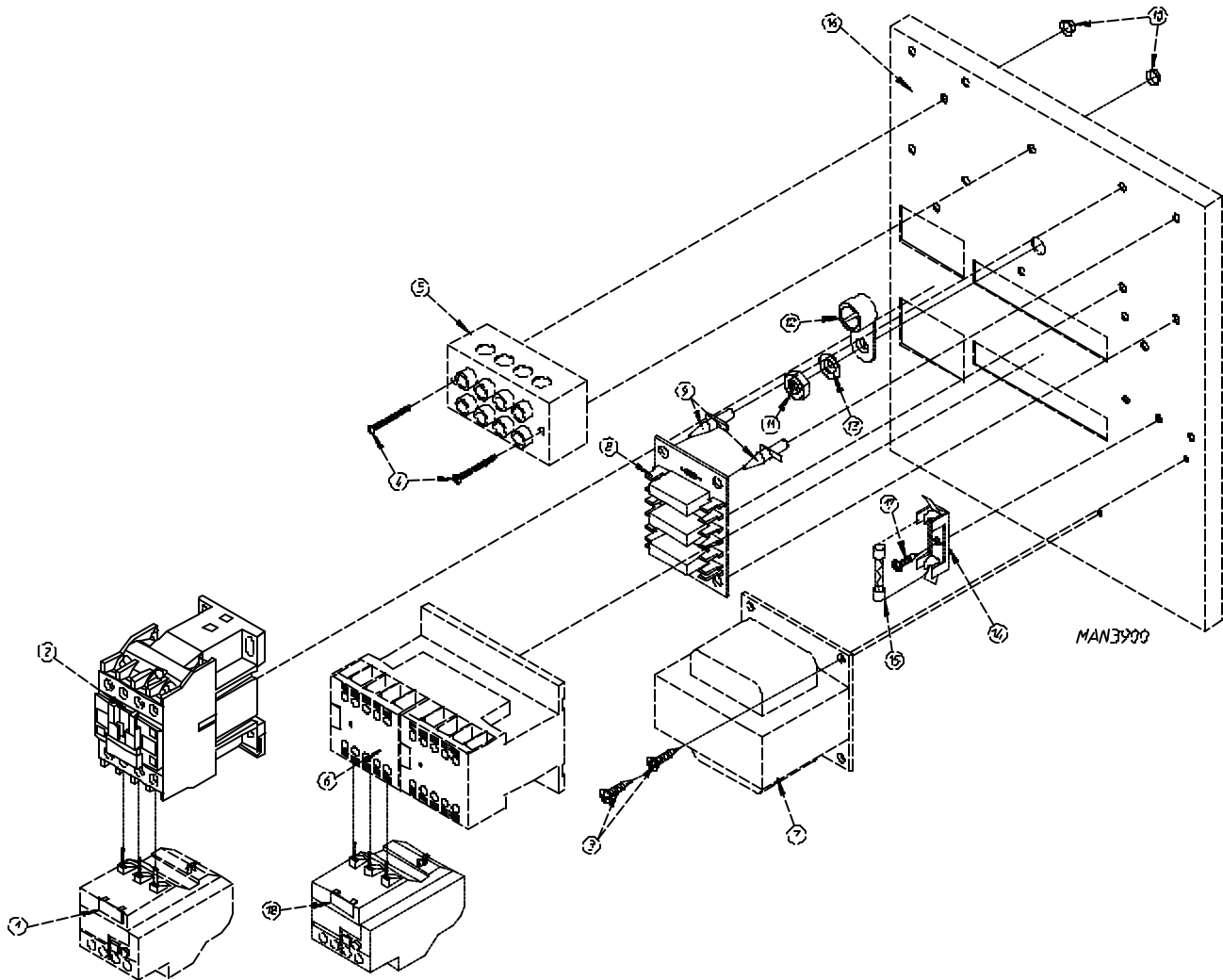
* Replace in matched sets (both belts).



| <u>Illus. No.</u> | <u>Part No.</u> | <u>Qty.</u> | <u>Description</u> |
|-------------------|-----------------|-------------|--|
| 1 | 142924 | 1 | 1" to 3/4" Reducing Coupling |
| 2 | 331291 | 1 | Pipe Bracket |
| 3 | 150309 | 20 | #10-16 x 1/2" Hex Head TEK Crimptite Screw |
| 4 | 142829 | 1 | 3/4" x 20" Nipple |
| 5 | 141300 | 1 | 3/4" Union Shut-off |
| 6 | 142701 | 1 | 3/4" Closed Nipple |
| 7 | 142601 | 1 | 3/4" Union |
| 8 | 142710 | 1 | 3/4" x 4" Nipple |
| 9 | 142504 | 1 | 3/4" x 90° Elbow |
| 10 | 142734 | 1 | 3/4" x 5-1/2" Nipple |
| 11 | 390125 | 1 | Pipe Bracket |
| 12 | 140026 | 1 | 3/4" 24 VAC Redundant (natural gas) Gas Valve |
| | 882098 | 1 | 3/4" x 24" VAC Redundant (liquid propane [L.P.] gas) Gas Valves |
| | 140411 | 1 | 24 VAC Gas Valve Liquid Propane (L.P.) Conversion Kit |
| 13 | 331291 | 1 | Pipe Bracket |
| 14 | 141208 | 1 | 3-Port Manifold |
| 15* | 140836 | 3 | #10 Burner Orifice (natural gas) ONLY |
| | 140855 | 3 | #33 Burner Orifice (liquid propane [L.P.] gas) ONLY |
| 16 | 141123 | 3 | Burner Tube ONLY |
| 17 | 390124 | 1 | Burner Tube Support ONLY |
| 18 | ----- | 1 | Sail Switch (refer to Sail Switch Assembly on page 27) |
| 19 | 390098 | 1 | Burner Box Cover Plate ONLY |
| 20 | 881597 | 1 | Hot Surface Ignition (HSI) Ignitor |
| 21 | 128921 | 1 | Hot Surface Ignition (HSI) Flame Sensor |
| 22 | 150001 | 2 | #6-32 x 1/2" Phillips Round Head Machine Screw |
| 23 | 151000 | 2 | #6-32 Pal Nut |
| 24 | 130401 | 1 | 330° Hi-Limit ONLY |
| 25 | 319703 | 1 | Hi-Limit Bracket |
| 26 | 881709** | 1 | Natural Gas Burner Assembly Complete (includes illus. nos. 1 through 14 and 16 through 29) For models mfd. with Natural Gas ONLY |
| | 881708** | 1 | Liquid Propane (L.P.) Gas Burner Assembly Complete (includes illus. nos. 1 through 14 and 16 through 29) For models mfd. with Liquid Propane (L.P.) Gas ONLY |
| | 881707 | 1 | Burner Box ONLY |
| | 881498* | 1 | Hot Surface Ignition (HSI) L.P. Conversion Kit |
| 27 | 335031 | 1 | Hot Surface Ignition (HSI) Module Mounting Bracket/Manifold Rest |
| 28 | 151001 | 2 | #8-32 Pal Nut |
| 29 | 881797 | 1 | Hot Surface Ignition (HSI) Module II |

* Consult factory for elevations over 2,000 feet.

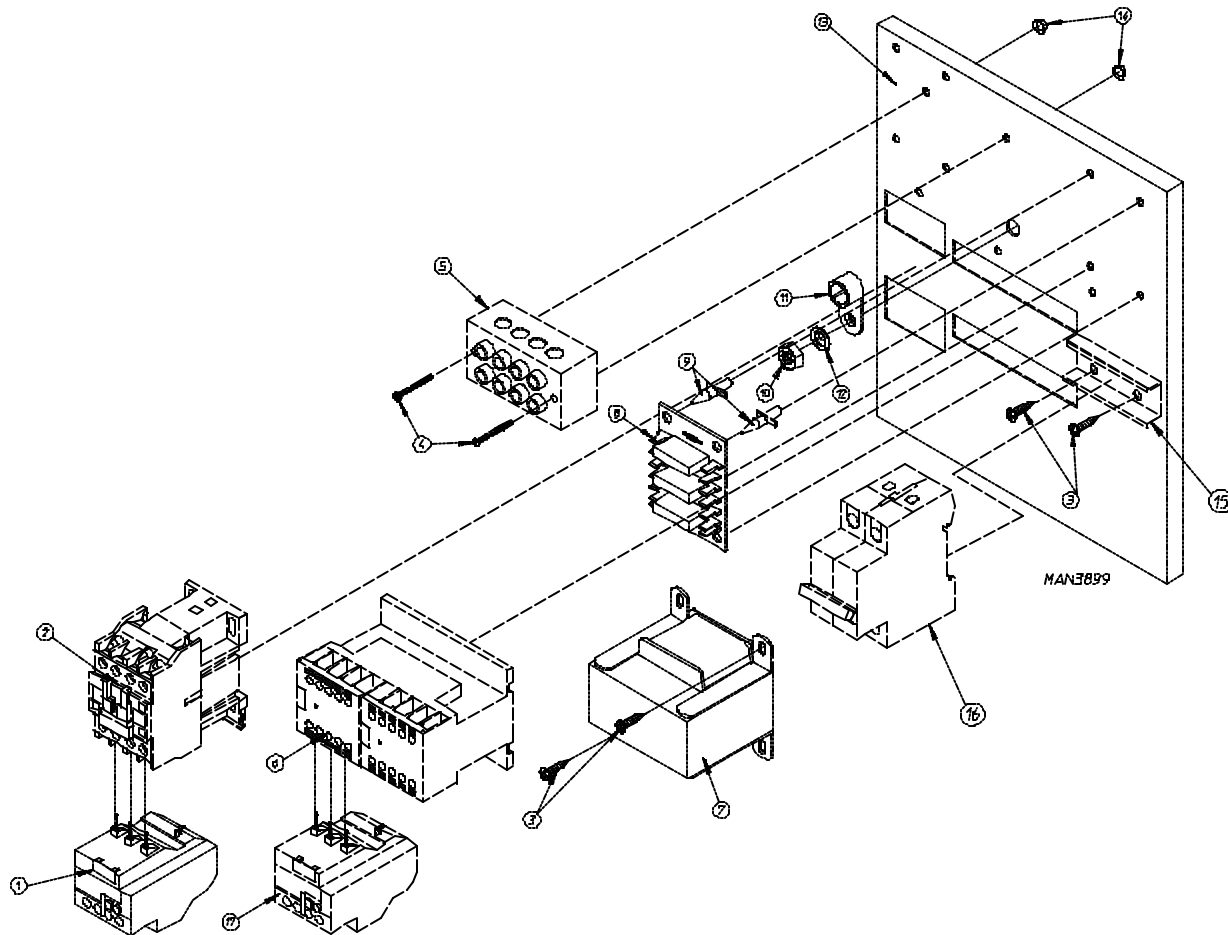
** Burner assemblies **DO NOT** include burner orifices, which **must be** ordered separately.



For 208/230/240/380/416 Volt Models ONLY

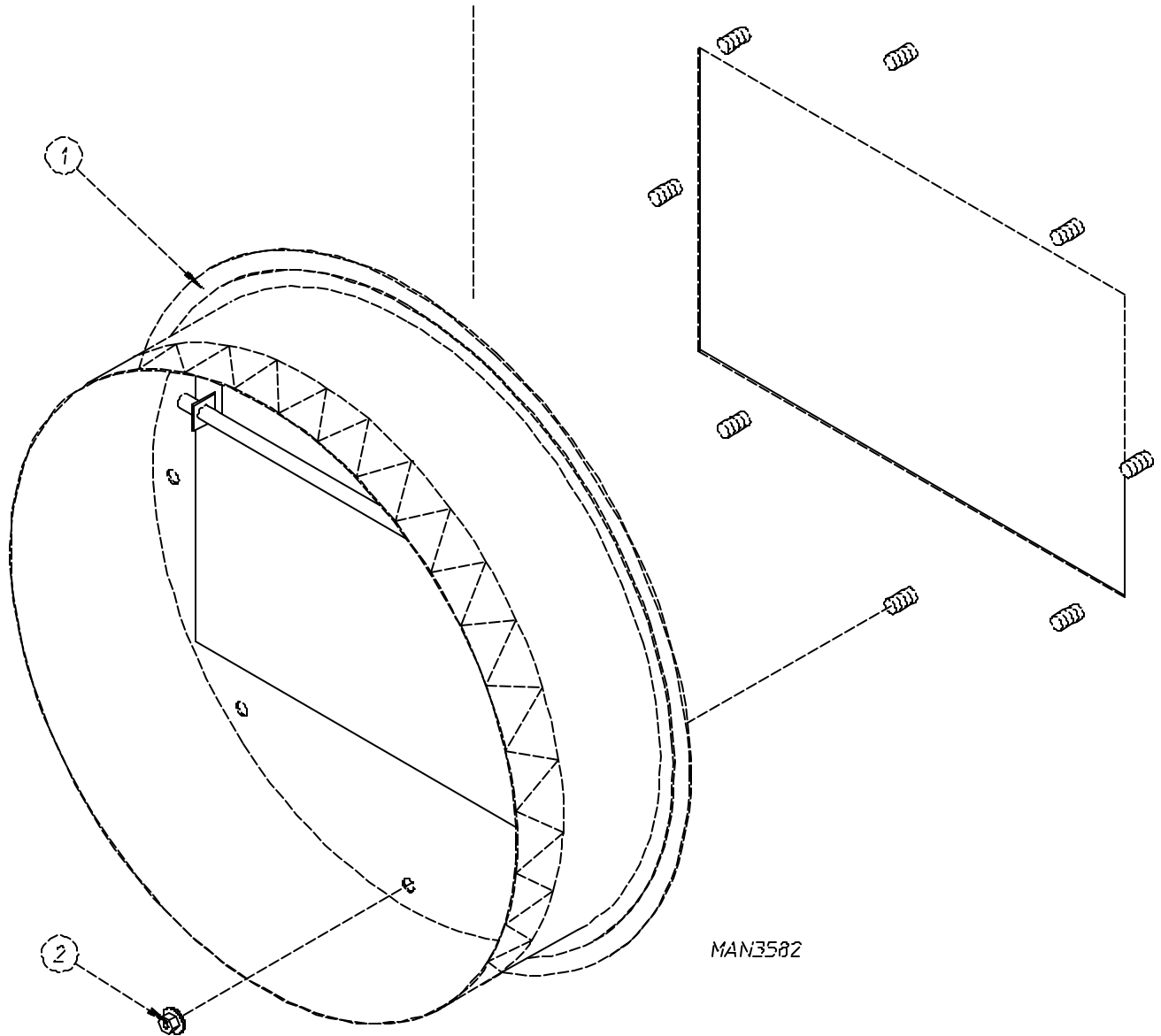
| <u>Illus. No.</u> | <u>Part No.</u> | <u>Qty.</u> | <u>Description</u> |
|-------------------|-----------------|-------------|--|
| 1 | 132467 | 1 | 9-13-Amp Blower Overload (for 208/230/240 volt models Only) |
| | 132468 | 1 | 4-6-Amp Blower Overload (for 380/416 volt models Only) |
| 2 | 132445 | 1 | 12-Amp 3 ϕ Contactor - 24 VAC |
| 3 | 150300 | 2 | #10 x 1/2" Hex Washer TEK Screw |
| 4 | 150008 | 2 | #6-32 x 1-1/4" Phillips Round Head Machine Screw |
| 5 | 120701 | 1 | 4-Position Terminal Block |
| 6 | 132448 | 1 | Reversing Contactor - 24 VAC |
| 7 | 132070 | 1 | 208-230/240 Volt Transformer ONLY |
| | 132082 | 1 | 380/416 Volt Transformer ONLY |
| | 881763 | 1 | ML Transformer Termination Kit |
| 8 | 137060 | 1 | Arc Suppressor (A.S.) Board |
| 9 | 137013 | 4 | Nylon Standoff |
| 10 | 151000 | 2 | #6-32 Pal Nut |
| 11 | 152004 | 1 | 5/16-18 Hex Nut |
| 12 | 121012 | 1 | Ground Lug |
| 13 | 153002 | 1 | 5/16" Lock Washer |
| 14 | 136008 | 1 | Fuse Holder ONLY |
| 15 | 136057 | 1 | 1/2-Amp (Slo Blo) Fuse (for 208/230/240 volt models Only) |
| | 136057 | 2 | 1/2-Amp (Slo Blo) Fuse (for 380/416 volt models Only) |
| 16 | 881992 | 1 | Reversing Relay Panel Assembly Complete (includes illus. nos. 1 through 18) For 208 volt models ONLY |
| | 881991 | 1 | Reversing Relay Panel Assembly Complete (includes illus. nos. 1 through 18) For 230/240 volt models ONLY |
| | 881701 | 1 | Reversing Relay Panel Assembly Complete (includes illus. nos. 1 through 18) For 380/416 volt Models ONLY |
| | 323743 | 1 | Relay Panel ONLY |
| 17 | 150301 | 1 | #8-18 x 7/16" Phillips Pan Head TEK Screw |
| 18 | 132457 | 1 | 2.6-3.7-Amp Drive Motor Overload (for 208 volt models Only) |
| | 132456 | 1 | 1.8-2.6-Amp Drive Motor Overload (for 230/240 volt models Only) |
| | 132454 | 1 | 1.2-1.8-Amp Drive Motor Overload For 380/416 volt - 50 Hz Models ONLY For 460 volt - 60 Hz Models ONLY |

For 460/480 Volt Models ONLY

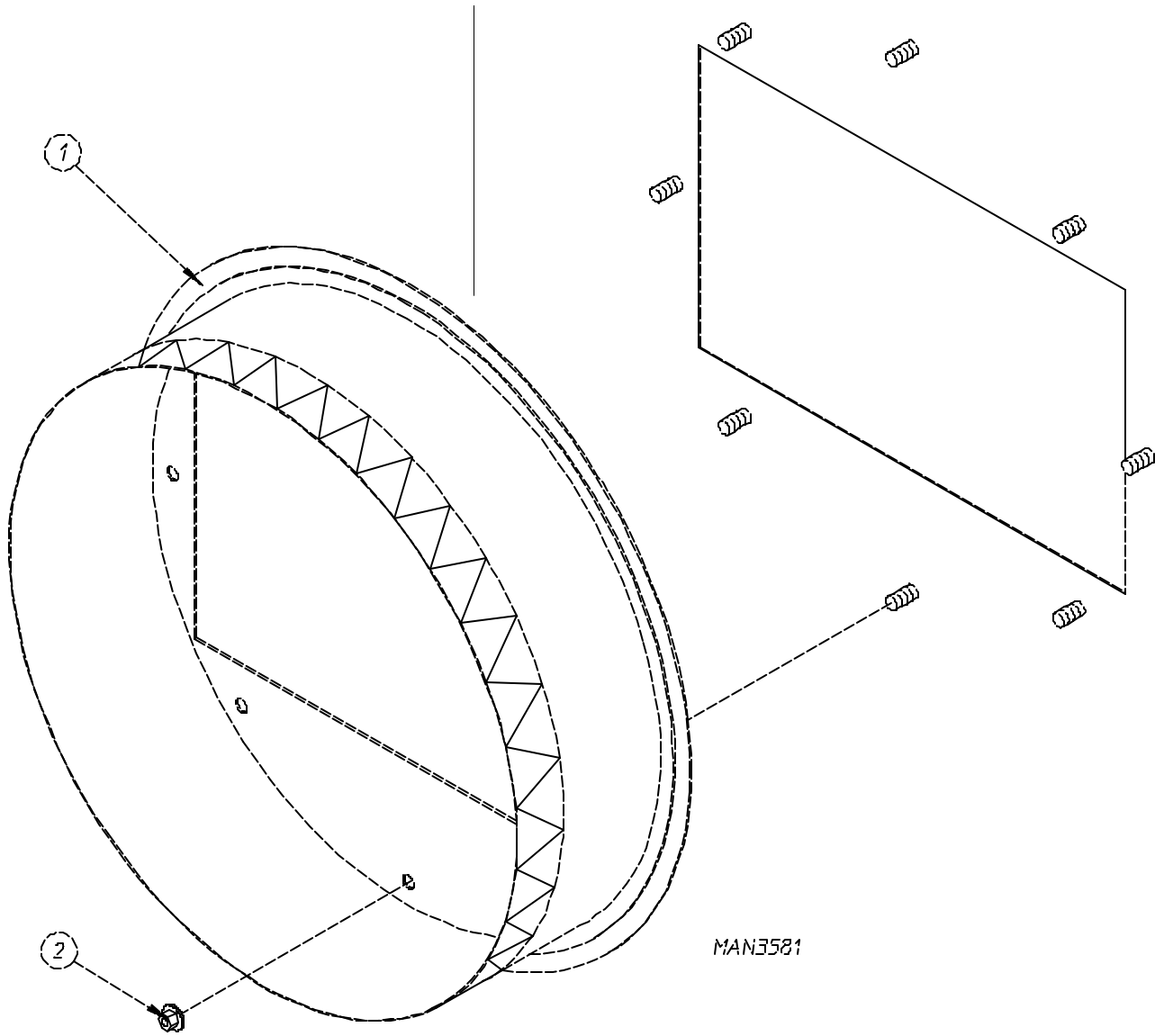


| <u>Illus. No.</u> | <u>Part No.</u> | <u>Qty.</u> | <u>Description</u> |
|-------------------|-----------------|-------------|--|
| 1 | 132468 | 1 | 4-6-Amp Blower Overload (for 460/480 volt models Only) |
| 2 | 132445 | 1 | 12-Amp 3 ϕ Contactor - 24 VAC |
| 3 | 150300 | 2 | #10 x 1/2" Hex Washer TEK Screw |
| 4 | 150008 | 2 | #6-32 x 1-1/4" Phillips Round Head Machine Screw |
| 5 | 120701 | 1 | 4-Position Terminal Block |
| 6 | 132448 | 1 | Reversing Contactor - 24 VAC |
| 7 | 132067 | 1 | 460/480 Volt Transformer |
| 8 | 137060 | 1 | Arc Suppressor (A.S.) Board |
| 9 | 137013 | 4 | Nylon Standoff |
| 10 | 152004 | 1 | 5/16-18 Hex Nut |
| 11 | 121012 | 1 | Ground Lug |
| 12 | 153002 | 1 | 5/16" Lock Washer |
| 13 | 881615 | 1 | Reversing Relay Panel Assembly Complete (includes illus. nos. 1 through 17) |
| | 881763 | 1 | ML Transformer Termination Kit |
| | 323743 | 1 | Relay Panel ONLY |
| 14 | 151000 | 2 | #6-32 Pal Nut |
| 15 | 120768 | 2 | Din Rail (sold by the inch) |
| 16 | 135501 | 1 | 1-Amp Double Pole Circuit Breaker |
| 17 | 132454 | 1 | 1.2-1.8-Amp Drive Motor Overload (for 460 volt Models Only) |

As of September 12, 1997

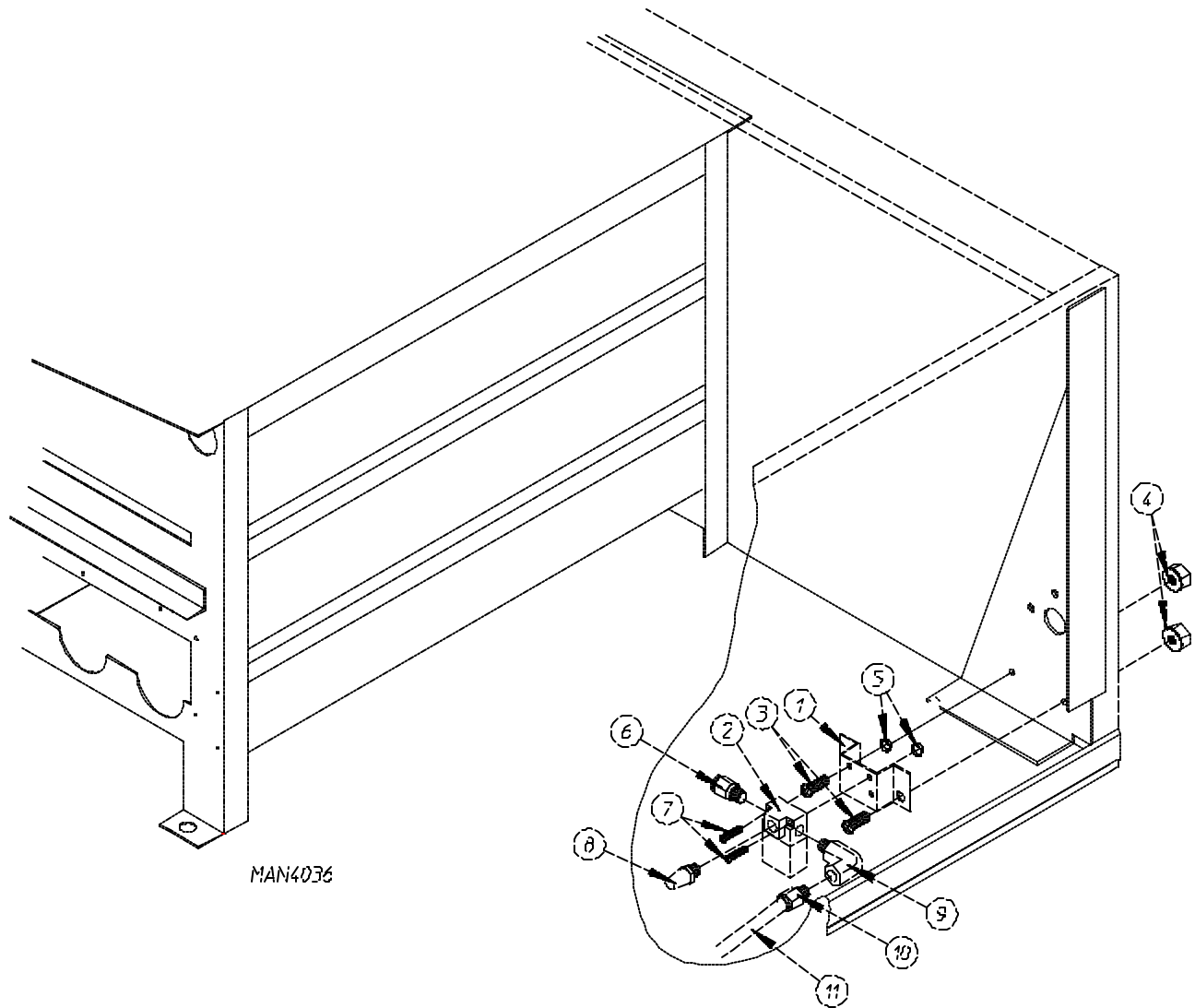


| <u>Illus. No.</u> | <u>Part No.</u> | <u>Qty.</u> | <u>Description</u> |
|-------------------|-----------------|-------------|--|
| 1 | 881705 | 1 | White Transition Piece Assembly with Damper Complete |
| | 881809 | 1 | Blue Transition Piece Assembly with Damper Complete |
| 2 | 152014 | 8 | 1/4-20 Free Spin Wash Nut |



| <u>Illus. No.</u> | <u>Part No.</u> | <u>Qty.</u> | <u>Description</u> |
|-------------------|-----------------|-------------|---|
| 1 | 881704 | 1 | White Exhaust Adapter Assembly without Damper |
| | 881808 | 1 | Blue Exhaust Adapter Assembly without Damper |
| 2 | 152014 | 8 | 1/4-20 Free Spin Wash Nut |

As of July 1, 1998



| <u>Illus. No.</u> | <u>Part No.</u> | <u>Qty.</u> | <u>Description</u> |
|-------------------|-----------------|-------------|-----------------------------------|
| 1 | 330987 | 1 | Micro Valve Bracket |
| 2 | 836002 | 1 | Air Jet Solenoid |
| 3 | 150111 | 2 | 1/4-20 Phillips Machine Screw |
| 4 | 152014 | 2 | 1/4-20 Free Spin Wash Nut |
| 5 | 151000 | 2 | #6-32 Pal Nut |
| 6 | 100472 | 1 | 1/4" x 1/8" Male Connector |
| 7 | 150002 | 2 | #6-32 x 1" Phillips Machine Screw |
| 8 | 100520 | 1 | 1/8" N.P.T. Silencer |
| 9 | 143268 | 1 | 1/8" 90° Brass Straight Elbow |
| 10 | 100472 | 1 | 1/4" x 1/8" Male Connector |
| 11 | 143110 | 9' | 1/4" Poly Flo Tubing |

ADC 450155

1 - 12/16/97-50
4 * 08/12/98-50
7 * 02/26/02-25

2 * 01/15/98-50
5 * 12/23/98-50

3 * 05/21/98-50
6 * 03/02/00-50

