

Instant TV Deluxe USB

ADS Tech

Instant TV Deluxe USB

English

Watch and Record TV shows on CD or DVD

Hardware User's Guide



website: www.adstech.com

Support: www.adstech.com/support/support.asp

Table of Contents

<u>Quick Installation Guide</u>	4
<u>Driver Installation</u>	5
<u>IR Blaster Installation</u>	7
<u>Capture Wizard</u>	8
<u>Service and Warranty</u>	28

© 2004 ADS Technologies. All Rights Reserved
Revision 4 March 2004

Apple and Macintosh are registered trademarks of Apple Computer, Inc. Microsoft, Windows, & Windows 98 are registered trademarks of Microsoft Corporation. IBM is a registered trademark of the International Business Machines, Inc. ADS is a registered trademark of ADS Technologies Inc. ADS Technologies (ADS) makes no warranty of any kind with regard to this material, including but not limited to, the implied warranties of merchantability and fitness for a particular purpose. The information furnished within this written document is for information purposes only and is subject to change without notice. ADS Technologies assumes no responsibility or liability for any errors or inaccuracies that may appear herein. ADS makes no commitment to update or to keep current information contained within this document. (rtt)

Quick Installation Guide:

This Quick Installation Guide should be used as a reference guide only. It is highly recommended that you read the complete Instant TV Deluxe Manual before using this product to help ensure you get the most of your Instant TV Deluxe.

Follow these instructions when using the Instant TV Deluxe for the first time.

Instant TV Deluxe Hardware Installation

- 1) Connect the Coaxial cable or Audio/Video cables from your video source to the Instant TV Deluxe.
- 2) Insert the Instant TV Deluxe CD into your CD-ROM drive.
- 3) Plug in the Power and connect the Instant TV Deluxe to an open USB port on the back of your computer.
- 4) Drivers for the Instant TV Deluxe are located on the root of the CD. When prompted for drivers, direct the driver installation to your CD-ROM.

(USB Instant TV Deluxe connection diagram image)



ADS IR Blaster Hardware Installation:

- 1) Insert the Instant TV Deluxe CD into your CD-ROM drive.
- 2) Connect the ADS IR Blaster into an open USB port on the back of your computer.
- 3) Drivers for the IR Blaster will be located on the Instant TV Deluxe CD. When prompted for drivers, direct the driver installation to your CD-ROM.



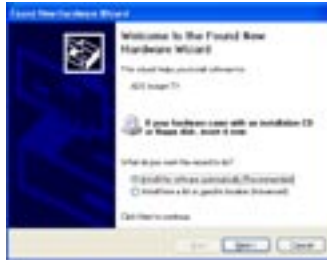
Step by Step Driver Installation:

Step 1:

Insert the Instant TV Deluxe CD into your CD ROM drive, then plug the USB cable from the Instant TV Deluxe to an open USB port on the back.

Step 2:

After plugging in the USB Instant TV Deluxe into an open USB port on the back of your computer, the "Found New Hardware Wizard" will come up, click "Next" to proceed with the driver installation.



Step 3:

Please wait for the computer to search for the proper drivers and once the "Next" button is highlighted, click on "Next" to go to the next step of the driver installation.



Step 4:

You now have finished installing the drivers, click the "Finish" button to finalize the driver installation.



IR Blaster

The IR Blaster is an infra-red transmitter and receiver. As an IR Receiver the IR Blaster acts as a receiver for the Instant TV Deluxe remote control. As an IR Blaster the device gives you the power to control external TV receiver devices.

The IR Blaster is a very powerful addition to a TV Capture card. Today many people do not receive TV signals over conventional analog cable systems. Many households today get TV content delivered via digital cable or satellite TV receivers. Instant TV Deluxe, the IR Blaster and included software allow you to schedule recordings of your favorite TV shows and capture those programs to your computer hard drive, no matter how the TV signal is delivered to your home. The IR Blaster communicates with these external tuning devices and allows you to record TV shows to your computer via the RCA or S-Video cables instead of the cable ready tuner.

Important Note: The IR Blaster is a powerful IR transmitter/receiver device but please keep in mind that Infra-red signals are a line of sight technology. IR signals cannot pass through walls. The IR Blaster can control devices that are in the same room or proximity to the IR Blaster device.

IR Blaster as a Remote Control Receiver

The Remote control and IR Receiver function of the IR Blaster gives you complete navigation and control of the Beyond TV and Quick DVD applications.

(See the Remote Control overview section for complete remote control review.)

Applications supported by IR Blaster receiver and Remote Control

- SnapStream Beyond TV 3.5 SE
- ArcSoft Quick DVD
- CapWiz – coming soon via a free internet download.

Note: Currently only the on-screen remote control is available for CapWiz. We will have a free download patch that adds remote control to CapWiz in the near future.

IR Blaster as an IR Code Transmitter – Blaster function

The IR Blaster is also a transmitter. It has been designed to allow you to control external TV tuning devices such as Cable Set Top boxes and Satellite receivers.

Applications supported by IR Blaster function:

- SnapStream Beyond TV 3.5 SE

When you run the Beyond TV Setup Wizard and choose Cable box or Satellite receiver as your TV source the IR Blaster will send codes to your tuning device to change channels. The Beyond TV setup Wizard lists several remotes in it's database. If your device is not in the list you can "Teach" the IR Blaster your remote control codes. The IR Blaster will learn your TV Remote TV tuning codes so that the IR Blaster can change the channels on your Cable Set Top box or satellite receiver so you can schedule recordings and automatically change channels to record the correct show.

(see instructions on Beyond TV Setup Wizard for complete setup instructions)

IR Blaster and the Instant TV Deluxe Remote

Once you have programmed the IR Blaster to send TV channel changing codes to your set top box, you can use the Instant TV Remote in conjunction with the IR Blaster to control your set top box.

- 1) Point the Instant TV Deluxe remote at the IR Blaster – press 4 and Enter – the IR Blaster will receive the code and then transmit the correct code to change to channel 4 on your set top box.
- 2) Use the computer keyboard to change channels on your set top box – press 4 followed by enter and the IR Blaster will send a code to change your set top box to channel 4.

Note: The Instant TV Deluxe Remote is not a learning remote. The IR Blaster is a learning IR Blaster when used in conjunction with the Beyond TV software. The Instant TV Remote cannot directly control your TV or set top box....the IR Blaster does.

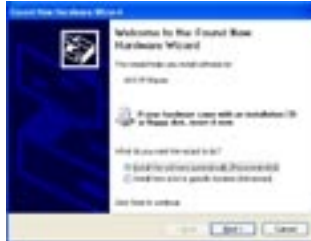
IR Blaster Installation:

NOTE: Make sure that you have the Instant TV Deluxe CD inserted into your CD-ROM drive when plugging in your hardware.

The ADS IR Blaster is a plug 'n' play USB Device, so it's easy to setup. Simply plug it into any PC running Windows and you will automatically be prompted for the driver disk.

Step 1:

Plug the USB IR Blaster into an open USB port on the back of you computer; and a “Found New Hardware Wizard” window will come up to start the driver install, click “Next” to continue on.



Step 2:

The Windows Logo testing window will come up, to continue with the driver install click on “Continue Anyways”.



Step 3:

You are now finished with the hardware driver install of the ADS IR Blaster, click "Finish" to finalize the installation.



This USB device creates a wireless, infrared connection between your cable box or satellite receiver and the PC running Beyond TV.

The USB IR Blaster," allows any USB-equipped PC to exchange infrared signals with common audio/video equipment. For Beyond TV users who receive their television signal via satellite or cable boxes, the USB IR Blaster completes a critical link: it allows the PC running Beyond TV to tune to the channels received on your receiver box so you can watch live TV and make recordings. Best of all...the infrared signal means that the connection between PC and receiver box is wireless. Additionally, this USB device does away with the hassles of similar devices that use a serial connection.

Capture Wizard

Capture Wizard: Easy Video Capture and Playback

Introduction:

This is the fastest and easiest way to Watch TV, capture MPEG-1 (VCD), MPEG-2 (SVCD, DVD) and DivX video on your PC. Use the Capture Wizard screens to verify your video connections, video compression format and where you want to store your captured video files on your computer drive.

Use CapWiz to quickly capture Video or just watch TV. CapWiz also allows you to set timed recordings, schedule a recording and delayed recordings. You can also easily set capture quality settings with DVD Good, Better and Best Settings or use the custom settings to capture video just the way you want. CapWiz also features advanced controls such as variable bit rates, preprocessing temporal and spatial filters to help clean up noisy TV signals or old VHS tapes.

With CapWiz you can even use the Direct to Disc feature (for DVD, SVCD or VCD) to capture and burn directly to a CD or DVD disc. Direct to Disc can save hours in your effort to convert old VHS tapes to DVD disc or record your favorite show direct to disc and watch in your home theatre DVD player.

Step One: Open Capture Wizard (Cap Wiz.)

Click the Cap Wiz icon on your Desktop
Or Click “Start” -> “Programs” -> “ADS Tech Instant TV Deluxe” and click on “Capwiz”

Choose worldwide video standard based on country –
For Users in North America, you will select NTSC.
For Users in Europe and many other countries you will select PAL.

For more information on these standards, click on
“Learn more about worldwide video standards”



Step Two: Select Video Inputs

Choose RCA or S-Video or TV Tuner based upon your video source.



Step Three: Create file name and select file location

We will automatically select ‘My Documents\My Videos’ as the default location to store your video files. You can select a different location if you desire.

Type in the file name for your video capture.



Step Four: Choose video format

In this step you will select between MPEG-1 and MPEG-2 video compression formats. Select MPEG-2 if you wish to capture video in the highest quality DVD format. Select MPEG-1 if you want to capture video in the VCD format.

The Disk Space indicator shows the amount of disk space you have available and an example of how much video you can capture if you selected MPEG-2 at 3 Mb/sec.

For more information on these MPEG, click on “Learn more about video formats”.



Ready

Now you are ready to start viewing and capturing video. You will need to start your camcorder or VCR playing. Press Play on your video source (VCR, DVD player, etc.).

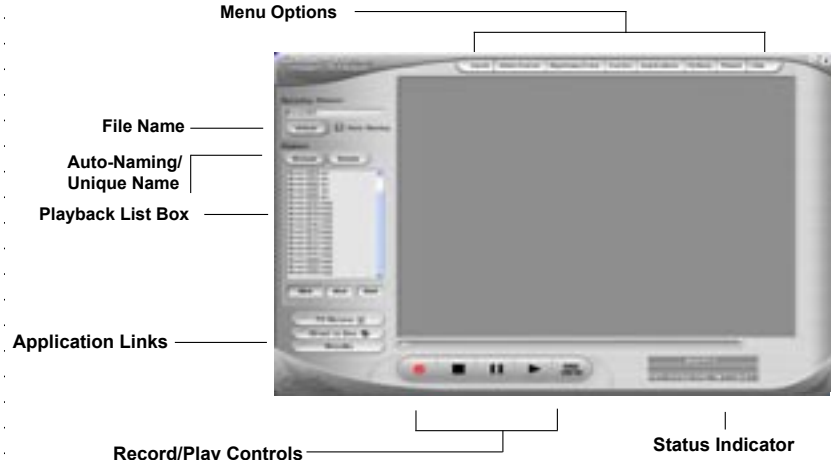
Click Finish and the Wizard screen will disappear and you will see the full Capture Wizard interface.



Using Capture Wizard Video Capture/Playback tool for the first time:

You have just completed the Wizard screens to ensure that you have connected your video cables, selected your video format and now you are ready to capture video.

The Capture Wizard Interface



Preview and Record Video

- 1) Be sure your video device is playing a video
- 2) Click "Preview" and you will see video playing in the preview window. You will notice the status indicators are Blue and are displaying "Preview".
- 3) Click the "Stop" (■) button or press the "esc" key on your keyboard to stop video preview.
- 4) If you Click the Red "Record" (●) button while previewing video, the video will stop momentarily, then start again. When the video preview starts again, you are recording. You will notice the status indicators have turned red and are displaying "Record".
- 5) To Stop recording, press the "Stop" (■) button or press the "esc" key on your keyboard.
- 6) You will notice that the file name has been added to the playback list box.

Ways to begin Recording

1. You can start recording from the Stop or idle status in CapWiz or while you are previewing video.
2. Click the red record(●) button to begin recording at any time.
3. To Stop recording, Click the “Stop” (■) button or the “esc” key on your keyboard.
4. The video will be displayed in the resolution you selected for the video capture:
 - a. VCD 352 x 240 NTSC / 352 x 288 PAL
 - b. SVCD 480 x 480 NTSC / 480 x 576 PAL
 - c. DVD 720 x 480 NTSC / 720 x 576 PAL

Playback Captured Video

This is the default setting. Video will be played back at the resolution it was captured in.

- 1) Click on the file name in the Playback List Box, then click on the “Play” (▶) button. You may also double click on the file name for Instant Playback. You will notice that the status indicator turns Green and the display changes to Play.
- 2) To Stop Playback, Click the Stop (■) button or press the “esc” key on your keyboard.

Seek through the video

If you have recorded a long video, you may want to jump ahead to a specific point in the video file and continue playback from that point.

- 1) Use your mouse to drag the playback position slider to the point you desire.
- 2) Click the “Play” (▶) button, or press the “Space” bar on your keyboard to resume playback.

Keyboard Short Cuts:

Preview = Enter key

Record = “R” key

Instant Playback = double click file name

Play/Pause = space bar

Stop Record = esc key

Stop Preview = esc key

Advance 1 second (in Pause mode) = right arrow key

Rewind 1 second (in Pause mode) = left arrow key

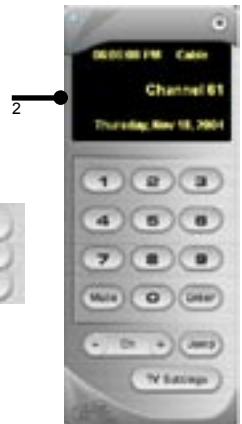
TV Tuning and the Remote Control Button

You can tune TV channels by clicking on the Remote Control button.

This launches an on screen remote control.

The on screen remote displays:

- Time of day
- Cable or Antenna
- Current channel tuned
- Date



Channel Number pad – You can click the number pad to change channels. Click the TV channel you want to watch, and then click Enter.

Mute – Click the Mute button to mute audio

Jump – The Jump button lets you toggle between TV channels. Click Jump and you will tune to the previously tuned station.

Close Remote – Click the X at the upper Right of the remote to close the On-Screen Remote Control.

Click the Remote Control button on CapWiz to launch the remote again.

Keyboard commands – you can change channels and move up and down the channel list via the computer keyboard.

Please note: You can use keyboard commands only when the Remote Control is active (look for the blue icon on the remote). If the blue dot is not lit, click anywhere on the remote to make it the active application.

- Number Keys on keyboard - enter the channel desired and press Enter
- Up button – tune Up
- Down button – tune down

TV Settings

Click the TV Settings button on the remote - Here you can:

- Scan Channels – scan the active channels. All channels that can be properly tuned will have a check mark by them. If you wish to remove a channel from the channel list, un-check it.
- Cable – Antenna – Choose either cable TV or antenna.
- Click OK or Cancel to close the TV Settings box.



Capture Wizard Features and Functions

Recording File Name:

Before Recording, check the Recording Filename box in the upper left hand corner of the application. The file name you selected in the Wizard Screen is listed here.

1. Keep this file name if you wish or run the Wizard to use a new file name.
2. Check the "Auto Naming" box and CapWiz will automatically name each captured file in sequential order; i.e. if your video file is "My Video", the first file captured will be named "My Video-000", the second "My Video-001" and so on.
3. Every time you stop a capture, the new file name will be displayed in Playback List box.
4. You can also uncheck "auto-naming" and click the "Unique" button and CapWiz will use the file name you enter in the filename box. You need to provide a new file name for each video clip captured. If you do multiple captures without changing the unique file name, the file will be written over each time you capture.

Playback List Box

The Playback list box shows the file names of your video captures. This list will match the directory location you selected in the Capture Wizard screens. If you are unsure of the location you selected, run the Wizard again.

Browse: The Browse button will allow you to browse to other file directories or hard drives. If you select another directory, any MPEG video files located there will appear in the Playback list box.

Details: The Details button will allow you examine the details of the files in the Playback List box. Click on the Details Button and a dialog box will open showing detailed information about each file such as: Date, File Size, File Name and location on your system.

Click on any file in this dialog box and then click Details again and you will see more details about this individual files such as:

- 1) Video bit rate
- 2) Audio sampling rate
- 3) Audio bit rate
- 4) Frame rate

Deleting a File:

From the detailed information box you can delete a file by clicking the "Remove" button. CapWiz will ask you if you are sure, click OK and the file is deleted from your system.

Application Links

The icons at the side of the CapWiz screen allow you to easily jump from CapWiz to the bundled applications that came with your product. You can quickly jump to VideoStudio or review the Capture Wizard screens anytime video is not playing in the preview area. When you click on an application icon, that application will start and CapWiz will automatically close.

Disable Wizard

You can repeat the Wizard steps and make changes to your settings by clicking the Capture Wizard icon anytime video is not playing. The Wizard will run every time you start CapWiz unless you can disable this by clicking Options at the top of the application and click on "Show Wizard" to uncheck this selection.

- 1) Click or uncheck - Show Splash Screen to not have splash screen appear at startup
- 2) Click or uncheck - Show Wizard to not have Wizard screens appear at startup.

You can re-enable these features at anytime by re-selecting the options.

CapWiz Direct to Disc

Direct to Disc Wizard Overview

Capture Direct to Optical Disc:

CapWiz now includes the ability to *capture directly to VCD, SVCD or DVD disc*.

Burn an MPEG file to Optical Disc:

You can also load a previously captured MPEG-1 or MPEG-2 video file and burn to disc. You can select and burn a single video file only to disc, so if you want to edit several clips and join them together on a disc, you can use the other software applications included with your product (Video Studio or DVD Movie Factory). While writing a file to a disc, you will see the video progress bar advance to let you know the DVD writing progress.

No Hard disc space used...no worries about deleting files after your project or filling your hard disc.

The most exciting and revolutionary capability is the real-time direct to disc capability. You can create a VCD, SVCD or DVD without ever storing the video on your computer hard drive. Many users have expressed the desire for a fast and simple way to archive video tape to optical disc and the Direct to Disc Wizard in CapWiz 3.5 will allow customers to accomplish that goal. Just capture and burn to disc without having to store on your hard drive first. No worries about hard disc space, file maintenance; just capture and burn.

Support for All Media Types:

You can capture to any type of optical media (CD-R, CD-RW, DVD+R, DVD+RW, DVD-R, DVD-RW).

Simple DVD Authoring:

Direct to Disc capture in CapWiz has been designed to be very simple so don't expect too many fancy DVD Authoring tools. We always include either DVD Movie Factory or Ulead Video Studio for users who want to be more creative. CapWiz and the DTD feature are meant to be the fast and easy ways to capture video to the PC or to get video on disc.

Single Session only:

In speaking with Customers we found that most people just want a fast and simple way to archive video tape to DVD. We have excluded features such as leaving a disc open for multi-session recording (adding more video files at a later time), editing the DVD, and other features found on full featured DVD Authoring packages. You do have those capabilities with other software bundled with your Instant DVD or DVD Xpress product. Again, the goal was to keep the Direct to Disc capability in CapWiz very fast, simple easy and un-confusing.

What is Single Session?

Single Session means that once you have recorded to the disc, the disc cannot be appended or added to. You can record only one time to a disc, one home movie one video capture session. You can only record video to a blank disc. If there is existing video content or some other type of file on the disc, you cannot capture video to that disc. The disc must be blank. Therefore if you are using a re-writable disc with video content on the disc, you will have the ability to playback the file (so you can see what is on the disc) but if you want to capture to that RW disc, you will be forced to erase the video file before capturing, or you can choose a different disc to record.

DVD Authoring Features:

Record to any type of Optical Media

Select Optical drive

Confirmation of Optical drive capabilities

Confirmation of media type in drive and media condition (disc must be blank to allow recording)

Select video compression format

Display of available video record time based on video compression settings and disc type

Create Movie Title (Volume name)

Create Video Clip name

Set record duration time (display of available time)

Set Chapter point interval

Select menu Background template

Quick Guide – CapWiz Direct to Disc Wizard

We have tried to make the Direct to Disc Wizard simple to use. You can begin recording video directly to a disc in as few as 4 Clicks. Here are the quick step by step instructions to start recording to disc in real time.

- 1) Insert a Blank CD or DVD disc into your disc drive.
- 2) Click the Direct to Disc Wizard button.
- 3) Select Capture Direct to Disc or load a file to write to disc.
- 4) Select the Video format you want to record (VCD, SVCD, DVD)
- 5) Choose the disc drive you want to use for recording.
- 6) Check disc status information on the Step 1 Screen.
- 7) Click NEXT
- 8) Type in the name your movie title and video clip
- 9) Set Duration time or choose "None" for manual control
- 10) Set Capture point time intervals or "None"
- 11) Click Record to Disc
- 12) Click Yes to begin recording after disc has been initialized.

Direct to Disc Wizard Instructions

Direct to Disc Wizard:

You will notice that we have added a link button on the lower left hand corner of the CapWiz screen called "Direct to Disc" –





Clicking the Direct to Disc button launches the Direct to Disc (DTD) Wizard. The DTD Wizard can be launched while CapWiz is idle (no video preview) or while video is being previewed. You cannot start the DTD Wizard while you are recording to the hard drive or if you are playing back a previously recorded video file.

Splash Screen:

The splash screen introduces the user to the DTD capabilities. This splash screen can be disabled so it will not appear again. **Click NEXT to Continue**

DTD Wizard Step 1:



In Step one you select if you want to capture and burn or load a file to burn, select your drive and video format you want to capture and burn and verify the drive capabilities and your optical media.

Capture and Burn or Load a file to burn.

The default setting is to capture and burn. If you want to burn a previously captured file, choose this setting and browse for the file.

Video Compression Settings:

Select the video format (VCD, SVCD or DVD) and compression setting (Good, Better or Best for DVD or choose Custom). You will be shown the amount of time available for recording on the disc based on the disc media and quality setting.

These settings over-ride any capture setting you have previously selected in CapWiz. However, if you choose "Custom" - the DTD Wizard will use the custom capture settings you have selected in CapWiz.

Select Disc Drive:

If you have more than one Optical drive you can select the drive you want to use for disc burning.

The DTD Wizard will examine the drive and show the type of media supported by the drive. This will show the capabilities of your drive. Not all optical drives support burning to all media types.

You must have a blank CD or DVD disk in the disc drive before starting the DTD Wizard. When you select the drive the DTD Wizard not only examines the capability of your drive, but also detect the type of media in the drive. The Media Type will be displayed and the type of contents on the disc (if any) will also be displayed. You need to use a Blank disc for recording, so be sure that the "Contents detected on the disc" message shows that the disc is **Blank**.



What can I burn to what?

<u>Type of Drive</u>	<u>Common Media Type</u>	<u>Video Format on Disc</u>
CD burners	CD-R or CD-R/RW	VCD or SVCD
DVD Burners	CD-R, CD-R/RW DVD-R, DVD-RW,	VCD or SVCD DVD
	DVD+R, DVD+RW	DVD

Check the capabilities of your drive and the type of media you have before starting your video project.

Error Proof :if you select a drive with a CD-R inside the video format will automatically change to the best video format for this media, which would be SVCD. You cannot capture DVD to a CD-R disc. You cannot capture VCD to a DVD disc. These are formats that are incompatible with the media type and we don't want you to make a mistake.....so we will try our best to make you Error Proof.

DTD Wizard Step 2:

In step 2 you customize your video disc with Movie and video clip titles, set video capture duration times, auto chapter timing points and back ground template.

Background Template:



You can select from several background templates. CapWiz 3.5 includes a dozen templates to choose from. Scroll through the background menus. The menu that is visible is the one that will be created on your video disc.

Movie title Name:

You type in the main title of your DVD movie. Movie Title name has a limit of 10 characters.

Video Title Name:

You can also name the video clip to customize your video disc. The Video Title name has a limit of 12 characters.

Capture Duration:

The DTD Wizard shows you the approximate record time available on the disc and also allows you to select preset record duration times or you can click the Custom button to set your own exact record time settings. If you want to have manual control of the record time, use the "None" selection choice in the duration time drop down menu.

Stop Recording:

If you have selected a Record duration time, recording will stop when the record time duration has been met. At this point the disc will be finalized and after a few seconds or up to a few minutes (depends on your drive speed and media type) the finished disc will be ejected.

You can also click the **Stop button** on CapWiz or press the **Escape key (ESC)** on your keyboard to stop recording at any time. Please **BE AWARE** that if or when you stop recording, the disc will be finalized and you will have a CD or DVD with a background menu and a video file recorded on the disc even if you stop capture after a few seconds.

The disc will have been written to and will no longer be recordable. Avoid mistakes and wasted discs with a bit of pre-planning to know what you want to capture before you get started.

Error Proof: If you do not set a capture duration time you can possibly capture beyond the capacity of the disc space. CapWiz monitors how much video is recorded on the disc and the available disc space. When you reach 99% capacity CapWiz will automatically stop recording and finalize your disc.

Auto Chapter Setting:

When creating DVD movies, the DTD Wizard allows you to select how often you want to set a chapter point. You can set a chapter point to occur at specific time intervals (1minute, 3 minutes, 10 minutes, etc.). Chapter points make it easier to navigate through a long movie. When playing the video on your DVD player, you can use the NEXT or PREVIOUS buttons to jump from one chapter to the next.

Note that on the DVD Templates you will see a space for only one (1) video thumbnail. This is because there is only one (1) video title (video clip) recorded to each disc. The chapters you set are spaced within this video clip. You will not see a video thumbnail for each chapter point, but you will be able to use the NEXT and PREVIOUS buttons on your DVD player remote control to jump from chapter to chapter.

Auto chapter setting is not supported for VCD or SVCD disc formats – so this selection will be grayed out when you are creating a VCD or SVCD.

Record to Disc:



Click the Record to Disc button to begin the recording process. Before actual direct to disc recording can take place, the CD-R or DVD disc must be initialized. The initialization process can take from a couple of seconds or up to a minute depending upon your disc drive and media type. When you click the Record to Disc button you will be presented with the “Disc Initialization Advisory” message. This message is to advise you of the initialization process. After you are familiar with this process you can select “Don’t show again” and the message will not appear in future recording sessions.

Ready to Record:



Once the disc has been initialized you will see the record confirmation dialog box. Recording will not start until you click the “YES” button. This provides you the opportunity to cue up your video to the exact start position. Once you click YES, recording will start in approx. 1 second. If you decide you are not ready or you want to make a change to any record settings, click NO to return to the Step 2 Wizard screen.

Recording to Disc:

Once you have started to capture directly to optical disc you will see the preview video screen appear and the CapWiz indicator will display “Recording DTD”. CapWiz will also display the current record time as well as audio and video formats being recorded. After 30-40 seconds you will see the indicator LED on your optical drive begin to flash. This indicates that audio and video are being written to your disc.



Once the duration time has been reached or after you have stopped capture the navigation menu will be written to disc and the disc will be finalized so it is ready to play in a DVD player or with DVD player software on your PC.

Menu Options

This section will describe all settings and choices for all of the menu options along the top of the CapWiz Interface.

• Video Inputs/Outputs:

This dialog box allows you to quickly change your video input choices. Here you can choose between RCA, S-video These settings can also be changed by running the Capture Wizard Screens.

• Video Format:

The Video format dialog box allows you to quickly change your video format for NTSC or PAL. If you are not sure of the correct selection, run the Capture Wizard and read the document called "Learn more about worldwide Video Standards". The Video format box also allows you to quickly set your video resolution and quality setting. You can choose:

- a. DVD at Good, Better or Best Quality
- b. Super Video CD (SVCD)
- c. VCD

There are no quality settings for SVCD or VCD as these formats have standard video and audio bit rates. CapWiz will display the following standard video capture settings based upon your USB Connection.

USB 2.0 Connection

DVD Settings - 4, 6 or 9 Megabits per second (Mb/sec.)
SVCD - MPEG-2 video at 2.4 Mb/sec.
VCD - MPEG-1 video at 1.15 Mb/sec.

USB 1.1

2.5, 3 or 4 MB/sec.*
Same
Same

The Video format and bit rate (4, 6 or 9 Mb/sec) for DVD video will be displayed in a status area of the CapWiz interface so you will always know what video format and bit rate you are recording. *If connected at USB 1.1 Full Speed the maximum video bit rate is 4 Mb/sec.

Video Format:

- a. DVD at Good, Better or Best Quality
- b. Super VideoCD (SVCD)
- c. VCD
- d. DivX



DivX is a highly compressed video format. Many users like DivX video because you can capture video at 352 x 240 (352 x 288 PAL) and get about 2 hours of video on a single CD. DivX files can be played back by several models of new DVD Players. DivX capture is supported in CapWiz for PC's with CPU speed of 1.8 GHz or faster. If your PC does not have a 1.8 GHz CPU, you will see the following message.



Home Theatre Profile – 640 x 480 resolution - To capture DivX files in the Home Theatre profile your PC needs to have a CPU speed of 2.4 GHz or faster.

If your CPU does not meet this requirement, you will not be able to capture DivX at the higher resolution.



If your system meets the minimum requirement you should be able to capture very nice quality DivX video files in real time

Custom User Defined video settings:

CapWiz lets you set custom capture settings. The custom settings give you lots of flexibility in reating capture settings to meet your individual needs. To access the Custom Settings dialog box, click on the “Custom Settings” button.

Video Bit Rates:

Set the video standard you want to capture in. The standard you select must match the standard of your video player and video content. When you select PAL, you will notice that the Video Resolutions choices automatically change to PAL resolutions.

MPEG-1 – When MPEG-1 is selected the only video resolution allowed is 352 x 240 (NTSC) or 352 x 288 (PAL), however you can select video capture bit rates from 1 Mb/sec. up to 15 Mb/sec.

MPEG-2 – You can select any Video capture resolution and any video capture rate from 1 Mb/sec. to 15 Mb/sec.

Video Resolution:

You can select from the following video capture resolutions

<u>NTSC</u>	<u>PAL</u>
325 x 240 (VCD)	352 x 288 (VCD)
352 x 480 (1/2 D1)	352 x 576 (1/2 D1)
480 x 480 (SVCD)	480 x 576 (SVCD)
704 x 480 (DVD)	704 x 576 (DVD)
720 x 480 (DVD)	720 x 576 (DVD)

Video Bit Rate:

You will notice that you have the ability to select a video capture rate of up to 15 Mb/sec. You will also notice that any bit rate over 9 Mb/sec. is **red in color**. This is because any bit rate above 9 Mb/sec. is not supported by DVD players and DVD burners. We allow you to capture at higher rates because some users may want to have the capability to capture at the highest rate possible and don't have DVD burning as a project goal. Just keep in mind that if you want to burn your video onto a CD or DVD disk, don't use a setting higher than 9 Mb/sec. or lower than 2 Mb/sec.

DivX Custom Settings:

Set Video format to DivX and you now can select the following capture resolutions:

<u>DivX Profile</u>	<u>NTSC</u>	<u>PAL</u>
Portable	352 x 240	352 x 288
Home Theatre	640 x 480	640 x 576

Note: DivX video is highly compressed and takes more CPU Umph (power) than MPEG-1 or MPEG-2 captures. Therefore we have set the minimum CPU spec as follows:

<u>DivX Profile</u>	<u>CPU Speed</u>
Portable	1.8 GHz or faster
Home Theatre	2.4 GHz or faster

Since captures at lower CPU speeds will not be acceptable, CapWiz will not allow DivX captures on slower machines.

DivX Audio

DivX is a video codec only. Our friends at DivX networks have set the standard for compatibility of DivX files with DivX certified playback devices to use either MP3 audio or MPEG-1 Layer 2 (MP2) audio. CapWiz supports hardware compression of MPEG-1 Layer 2 audio.

The audio sampling rate can be selected by the user as 44.1 kHz or 48 kHz and the audio bit rate setting ranges from 192 kbps to 384 kbps. A higher bit rate will make the resulting file size larger.

Custom Settings Caveats

We have provided lots of flexibility in the manner in which you can capture video at various resolutions and audio/ video bit rates. We have provided this flexibility because many customers have asked for this kind of capability. However, think about your project goal before you begin recording. If your intent is to capture video to be burned to CD or DVD disk, then capture at resolutions and bit rates that are "**Legal**" for burning and playing back in players. If not, you may find that you have spent hours capturing video only to find that it the DVD authoring software will not directly burn it, or your player will not play it back.

VCD, SVCD and DVD Legal Settings (check our web site for F.A.Q's and other updates to this list):

Format	Video Bit Rates	Audio Bit Rates
VCD	1.15 Mb/sec.	224 kbits/sec.
SVCD	1.5 Mb/sec. - 2.5 Mb/sec.	128-384 kbits/sec.
DVD	2 Mb/sec. - 5 Mb/sec.	192 - 448 kbits/sec.

Audio Bit Rates

The audio format is always compressed in MPEG-1 Layer 2 audio. CapWiz also automatically sets the audio sampling rate to 44.1 Khz for VCD and SVCD settings and 48 Khz for DVD video. We give you the choice to select the audio bit rate for your custom video captures in the range from 192 kbits/sec to 384 kbits/sec.

Use Variable Bitrate

Capturing with variable bit rate will result in overall smaller file sizes than using constant bit rates. When the Variable bit rate setting is enabled Instant DVD examines the frames of video being captured and will automatically increase the bit rate in areas of fast motion or action and decrease the bit rate in areas where not much is changing. This will result in improved overall quality and an overall smaller file size. The default capture settings are set to constant bit rate.

Video Preprocessing Filters

DVD Xpress includes video preprocessing filters which provide the ability to remove some of the noise found on old video tapes, TV reception or other noisy video sources.

Spatial Filtering

This refers to filtering pixel data that are all located in the same video frame. The Spatial filter is a low-pass filter. This filter removes part of the high frequency noise components. Too much filtering can reduce image sharpness to the point of looking very smooth or blurry. The selection range for this filter is from 0 to 7.

Temporal Filter

This filter processes pixel data that are located in the same pixel coordinates but across two frames of video, usually the current video frame and the previous frame. Because of motion in video sequences, and object located in one position may have moved in the next video frame. Thus, if there is a log of motion, temporal filtering may cause blurring or introduce other artifacts. The selection range for this filter is from 0 to 255. What is the best filter to use for your video? There is no magic formula, you will need to experiment with different filter settings and pick the filter level that removes noise but does not create blur.

Use Deinterlacing (Preview/Playback)

The MPEG-2 software playback codec that we use does not de-interlace video by default. Interlaced video will show horizontal lines when you preview or playback the video. This interlacing does not affect video quality. All NTSC and PAL video is interlaced. You will not see the interlacing when playing back a DVD disk on TV. De-interlacing the video during preview and playback makes the video quality look better on the computer screen. The default capture settings have de-interlacing turned on by default. De-interlacing the video takes a bit more CPU processing power. Some slower PC's may experience jerky video. In the custom settings, you have the ability to enable or disable de-interlacing. Experiment with your system and your personal preferences to

determine if you want to preview with de-interlacing enabled or disabled.

Setting Custom Capture Settings

- 1) Click Custom Settings button
- 2) When the custom settings dialog box opens, make your selections.
- 3) Click OK to save
- 4) Click "Use Custom Format" to capture with the settings selected.

• **Brightness/Color**

Here you can make changes to Brightness, Chroma, Contrast, Hue and Saturation.

You can make changes to the Brightness/Color settings only while Previewing or recording video.

1. Move the slider for each setting choice and you will see the adjustment over the next second or two.
2. If you mess up, Click Reset to restore factory default settings.
3. Click OK to close the box.

• **Control**

The Control menu gives you another way to control video recording and playback:

The selections are: Preview, Record, Stop, Pause and Play.

• **Applications**

The Applications menu gives you another way to jump to bundled applications and you can also change the path of these applications if you happened to install them on a different drive.

1. Click the Applications menu button
2. Click on DVD Movie Factory or Video Studio to Jump to the selected application.
Capture Wizard will automatically close when you do this.
3. Click the Edit button. This will show the default or standard directory path the applications are normally installed.
4. To change the directory path click the box with the "... " and you can browse to the directory path you installed the application.

• **Options:**

The Options menus provides more selections in customizing your use of the Capture Wizard application: Click the Options button at the top of the interface to view the Options menu.

Show Splash

If there is a check mark next to this an "ADS" splash screen will appear on your screen when you start Capture Wizard. To disable, click on "Show Splash" and the check mark will disappear.

Show Wizard

If there is a check mark next to this, the "Capture Wizard" screens will appear on your screen when you start Capture Wizard. To disable, click on "Show Wizard" and the check mark will disappear.

Preview Immediately at Startup

If this has a check mark next to it; video will begin previewing automatically when you start Capture Wizard.

Playback...

This will allow you to playback captured video at any standard playback resolution regardless of the capture resolution:

- 1) Click Options at the top of the screen.
- 2) Click Advanced
- 3) Click Playback Options
- 4) Select the desired playback resolution.
- 5) If you select Full Screen, then you can manually drag the playback window to any size.

Selecting this will open a dialog box that allows you to change the playback resolution of captured video. This will allow you for example to playback SVCD (480 x 480) video at 720 x 480 if you like, and so forth. You can also set to playback all video at full screen resolution. When this setting is chosen, a full screen video window will open, but it is manually sizable by dragging any edge of the window.

Use RenderGraph

This setting is off by default. Only use this setting if you have some trouble using the "Seek" bar for playback. When this is enabled, CapWiz will use any MPEG decoder that is found on your system. If you have more than one MPEG software decoder installed there could be some confusion between MPEG decoders. To ensure that you use the DVD Xpress software encoder, uncheck this setting.

Skins...

This will bring up the Skin Chooser. Currently CapWiz includes 2 skins. You can easily choose the skin of your choice. In the future there may be lots of skins to select.

Recording

This presents a Recording Options dialog box with the following selections:

Prompt to Confirm Recording

If this is enabled, you will receive a confirming prompt when ever you click the Record button. This may be used to more accurately time the beginning of a recording session.

Prompt Delay Record

Enabling this feature will cause the "Recording Options" box to appear when you click the Record Button. Click "Prompt" Delay Record" again to disable. When you click the Record button you will be presented with a dialog box with allows you to set the hours, minutes and seconds for recording delay. For example if you want to start recording in 1 hour, set to one hour, after one hour, recording will start automatically.

Disable Screen Saver during recording

If you are doing a long capture you may want to disable your screen saver. Sometimes, depending upon the graphics card you are using, a screensaver, can disrupt the video capture.

Record Duration

You can set a time limit for your recording. If you know you want to record for exactly 1 hour, you can set the record duration, hours, minutes and seconds exactly. Start recording and walk away knowing that the recording will stop at the time limit you determine. You can use Record delay and Record duration in combination.

VCR Style Event Timer

The VCR style event timer allows you to set a date, start and end time for a recording event.

- Set start date and start time.
- Set end date and end time.
- Click – Set start and stop recording times –
- Click OK to close the Recording Options menu
- Click Record on the main CapWiz interface and the count down timer will appear showing the current time, seconds remaining and Recording Start time.
- You can click Skip to immediately begin recording or Cancel to clear the recording event.



Disk space

You can set up to be warned if you don't have enough disk space available when you begin recording. Check this box to enable the feature and set the slider to the amount of disk space you feel comfortable as a warning level.

• **Help**

About

The About box so you can check the version number you are running and it will also display the amount of disk space available on your C: drive.

Help Using CapWiz

This will bring up an Adobe Acrobat file that will display this CapWiz manual.

System Info

This will bring up a dialog box with all of your system information. You can click the copy button and paste this information in an e-mail and send to the ADS tech support person if he/she requests it.

Service and Warranty:

If you require assistance with the installation, operation, or application of your ADS Technologies, Inc. product there are several options available to you as described in the technical support section of this manual. Your primary source for information and assistance is always your computer store or computer parts dealer. If your ADS product needs repair or replacement, contact your dealer for on-site repair service. The ADS Technologies technical support and customer service staff can aid in solving many problems. Our technical support department is available to repair any ADS Technologies product. You or your dealer must return products to our factory for repair or warranty replacement.

Return/Replacement:

If you need to return your ADS Technologies product you should return the product directly to the dealer or store where you purchased the product. Each individual computer store or dealer sets product returns policies for their customers. ADS Technologies, Inc. cannot be responsible for the actions or policies set by our dealers. If you desire to return the product for a refund, you must get the refund from the dealer or store you purchased the product from. If you purchased the product directly from ADS please see the "Terms and Conditions of Sale" on the reverse side of your sales invoice.

Returns to ADS Technologies, Inc. are for repair or warranty replacement only. If you need to return product to ADS Technologies, Inc. for repair or replacement you must follow these steps:

1. Call our Technical Support department at (562) 926-4338 in the USA or +353-61-702042 in Europe to obtain a Return Merchandise Authorization (RMA) number.
2. The RMA number is valid for 30 days.
3. Ship the product to the ADS factory with the RMA number marked on the inside and outside of the package. If there is no RMA number on the package or the RMA number has expired, the shipment will be refused. ADS will not be liable for lost or mis-shipped products.
4. Replacement product cannot be shipped to you until the defective product has been received by ADS.
5. Once the product is received at the factory it will be tested and then repaired or replaced.
6. Turn around time is approximately one week. A repaired or replacement product will be shipped back to you.

Warranty:

This ADS Technologies, Inc. product comes with a One (1) year hardware warranty, ADS Technologies, Inc. (ADS) warrants this product against defects in material and workmanship for a period of One (1) year from the date of original purchase from ADS or an authorized ADS dealer. This warranty applies only to the original purchase of the product and is not transferable. This warranty does not cover any incompatibilities due to the user's computer, hardware, software or other related system configuration in which the product interfaces. Proof of purchase will be required before any warranty consideration by ADS occurs.

This warranty does not cover any damage caused by negligence, non-authorized modifications, or parts installed without prior written permission from ADS. This warranty does not apply if the product has been damaged by accident, abuse, or misapplication, nor as a result of service to the product by anyone other than ADS.

If your ADS product is not in working order, your only recourse is repair or warranty replacement, as described above. UNDER NO CIRCUMSTANCES will ADS Technologies, Inc. be liable for consequential damages, including but not limited to any lost savings, lost profits, or any other damages, caused by the use of any ADS Technologies, Inc. product or inability to use the product, even if the dealer or ADS Technologies, Inc. has been advised of such liability or other claims. This includes damage to property and, to the extent permitted by law, damages for personal injury. This warranty is in lieu of all other warranties including implied warranties of merchantability and fitness for a particular purpose.

FCC Information:

Federal communications Commission Radio Frequency Interference Statement

Note: This equipment has been tested and found to comply with the limits for a class B digital device, pursuant to Part 15 of the FCC Rules. These limits are designed to provide reasonable protection against harmful interference when the equipment is operated in a residential installation. This equipment generates, uses and can radiate radio frequency energy and if not installed and used in accordance with the instruction manual may cause harmful interference to radio communications. However, there is no guarantee that interference will not occur in a particular installation. If this equipment does cause harmful interference to radio or television reception, which can be determined by turning the equipment off and on, the user is encouraged to try to correct the interference by one or more of the following measures:

- Reorient or relocate the receiving antenna
- Increase the separation between the equipment and receiver.
- Connect the equipment into an outlet on a circuit different from that to which the receiver is connected.
- Consult the dealer or an experienced radio TV technician for help.

Notice:

- The changes or modifications not expressly approved by the party responsible for compliance could void the user's authority to operate the equipment.
- Shielded interface cables and AC power cord, if any, must be used in order comply with the emission limits.

If you have any problems or questions on this product, please call:

ADS Tech

Technical Support - 562.926.4338

North America Support Hours:

Mon-Fri: 8am - 5pm, PST

Support: www.adstech.com/support/support.asp
www.adstech.com



European Technical Support: +353.61.702042

North America Support Hours

Phone: 562-926-4338

M-F: 8:00 am - 5:00 pm, PST

www.adstech.com

Support: www.adstech.com/support/support.asp

ADS TECH

NORTH AMERICAN OFFICE

Cerritos, CA 90703
Phone. 562.926.1928
Support. 562.926.4338

EUROPE OFFICE

Unit 1b, Shannon Industrial Estate,
Shannon, County Clare, Ireland
Phone. +353.61.702042
Support. +353.61.702001

Southern Europe Office

51-55 rue Hoche
94200 Ivry sur Seine, France
Phone. +33 1.43.90.19.20
Fax. +33 1.46.58.67.06



www.adstech.com

Part no. 705-521

Instant TV Deluxe USB