

Quantum.



Installation Guide Installation Guide Installation Guide Installation Guide

StorNext® 3.1.3

StorNext

6-00360-15

StorNext 3.1.3 Installation Guide, 6-00360-15 Rev B, September 2009, Made in USA.

Quantum Corporation provides this publication “as is” without warranty of any kind, either express or implied, including but not limited to the implied warranties of merchantability or fitness for a particular purpose. Quantum Corporation may revise this publication from time to time without notice.

COPYRIGHT STATEMENT

© Copyright 2000 - 2009 Quantum Corporation. All rights reserved.

US Patent No: 5,990,810 applies. Other Patents pending in the US and/or other countries.

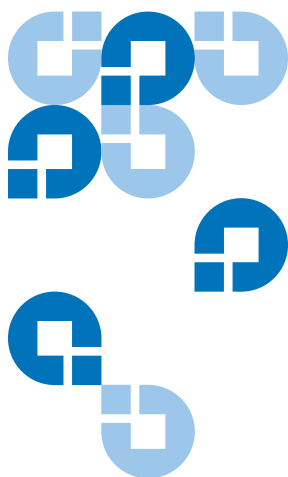
StorNext is either a trademark or registered trademark of Quantum Corporation in the US and/or other countries.

Your right to copy this manual is limited by copyright law. Making copies or adaptations without prior written authorization of Quantum Corporation is prohibited by law and constitutes a punishable violation of the law.

TRADEMARK STATEMENT

ADIC, Quantum, DLT, DLTtape, the Quantum logo, and the DLTtape logo are all registered trademarks of Quantum Corporation. SDLT and Super DLTtape are trademarks of Quantum Corporation.

Other trademarks may be mentioned herein which belong to other companies.



Contents

Chapter 1	Installing StorNext File System and Storage Manager	1
	Storage Manager System Requirements.....	2
	Operating System Requirements.....	2
	Hardware Requirements	2
	LAN Requirements.....	4
	Getting Ready to Install	5
	Configuring Storage Devices	5
	Planning for LUNs Larger than 1 TB.....	5
	Installing the Linux Kernel Source Code	7
	Verifying Hostname Length.....	7
	Pre-Installation Script.....	8
	Before You Begin.....	8
	Running snPreInstall.....	9
	Interpreting snPreInstall Output.....	10
	StorNext Installation Script	12
	Launching the StorNext Installation Script.....	12
	Changing Installation Configuration Options.....	14
	Performing an Installation Operation.....	17
Chapter 2	Installing StorNext File System	18
	File System Requirements.....	19
	Operating System Requirements.....	19

Hardware Requirements	20
LAN Requirements.....	20
Getting Ready to Install	21
Configuring Storage Devices	21
Planning for LUNs Larger than 1 TB.....	22
Installing the Linux Kernel Source Code	23
Installing StorNext File System on Linux or Unix	24
Launching the SNFS Installation Script.....	24
Changing Installation Configuration Options.....	25
Performing an Installation Operation.....	26
Installing StorNext File System on Windows	27
Removing a Previous Version of StorNext	28
Running the Setup Wizard	29
Restoring a Previous Client Configuration.....	33

Chapter 3

Installing the StorNext Client

36

Client System Requirements	37
Operating System Requirements.....	37
Hardware Requirements	38
Downloading the StorNext Client Software	39
Installing the StorNext Client on Linux or Unix	42
Installing the StorNext Client on Linux.....	42
Installing the StorNext Client on Sun Solaris	44
Installing the StorNext Client on HP-UX	46
Installing the StorNext Client on IBM AIX	47
Installing the StorNext Client on SGI IRIX	49
Installing the StorNext Client on Windows	51
Removing a Previous Version of StorNext	51
Running the Setup Wizard	52
Restoring a Previous Client Configuration.....	56

Chapter 4

Configuring StorNext

59

StorNext GUI	60
Accessing the StorNext GUI.....	60
Configuration Wizard	62
Displaying the Configuration Wizard	63
Using the Configuration Wizard	63
Configuring a Distributed LAN Client Server	67

Configuring a Distributed LAN Client on Linux.....	68
Configuring a Distributed LAN Server on Linux.....	68
Windows Configuration Utilities	72
Client Configuration.....	73
Disk Device Labeler.....	83
License Identifier.....	86
Simple File System Configuration.....	86
Start File System Services	88
Stop and Remove File System Services	88
Stop File System Services.....	88
Version Information	88
Check (Read-Only) a File System	89
File System Startup List	89
Re-initialize a File System.....	91
Repair a File System	91
Server Administration.....	91
Server Configuration.....	97

Appendix A

Uninstalling StorNext

108

Uninstalling StorNext on Unix and Linux	108
Uninstalling SNSM and SNFS	109
Uninstalling the StorNext Client Software	110
Uninstalling StorNext on Windows	111

Appendix B

StorNext Administration Tasks

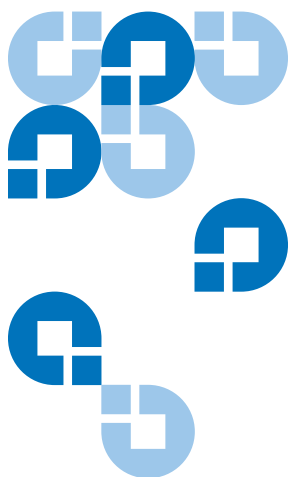
112

Sharing a Library Between Applications.....	112
Manually Modifying Storage Manager Configuration	114
fs_sysparm_override Configuration File.....	114
filesize.config Configuration File	115
log_params Configuration File	115
Connecting to a StorNext Network Using Xsan 1.4.2.....	116
Mounting SNFS on the OSx Computer	116
Creating the automount.plist File	118
Connecting to a StorNext Network Using Xsan 2.....	119
Mounting SNFS on the Mac OS X Computer	119
Viewing a Fibre Channel Device	122
StorNext Log Rolling Administration.....	123
Changing Log Rolling Times	123

Log Rolling Options	123
Avoiding Poor System Performance.....	124

Appendix C	StorNext Files	125
	The example.cfg File	125
	Commonly Used SNFS Files	132

Appendix D	Quality of Service Guide	135
	Overview	136
	Active vs. Passive.....	136
	Supported Platforms	136
	Configuration	137
	Unit of I/O.....	137
	Converting MB/sec to I/O/sec.....	137
	Real-time I/O.....	142
	SetRtio.....	143
	Oversubscription	143
	Handles	143
	Ungated files.....	144
	Calculating Available RTIO	145
	Callbacks	145
	Callback Failures.....	147
	Tokens	148
	Failure Semantics	149
	FSM Failures	150
	Client Failures	150
	Client Token Releases	151
	Monitoring	151
	Sharing Disk Resources.....	152



Figures

Figure 1	Pre-Installation Script	10
Figure 2	StorNext Installation Script.....	13
Figure 3	Configuration Menu	15
Figure 4	StorNext Installation Status	17
Figure 5	SNFS Installation Script.....	25
Figure 6	Configuration Menu	26
Figure 7	StorNext Installation Status	27
Figure 8	StorNext Installation Window: Remove StorNext	28
Figure 9	StorNext Installation Window: Install StorNext.....	29
Figure 10	SNFS Setup: Welcome	30
Figure 11	SNFS Setup: End-User License Agreement	30
Figure 12	SNFS Setup: Customer Information	31
Figure 13	SNFS Setup: Choose Setup Type.....	31
Figure 14	SNFS Setup: Ready to Install	32
Figure 15	SNFS Setup: Finish	32
Figure 16	StorNext Installation Window: Configure StorNext.....	33
Figure 17	StorNext Configuration Window.....	34

Figure 18 Import/Export Client Configuration Window 35

Figure 19 Select Platform Window 40

Figure 20 Download Client Software Window 41

Figure 21 StorNext Installation Window: Remove StorNext 52

Figure 22 StorNext Installation Window: Install StorNext..... 53

Figure 23 SNFS Setup: Welcome 53

Figure 24 SNFS Setup: End-User License Agreement 54

Figure 25 SNFS Setup: Customer Information 54

Figure 26 SNFS Setup: Choose Setup Type..... 55

Figure 27 SNFS Setup: Ready to Install 55

Figure 28 SNFS Setup: Finish 56

Figure 29 StorNext Installation Window: Configure StorNext..... 57

Figure 30 StorNext Configuration Window..... 57

Figure 31 Import/Export Client Configuration Window 58

Figure 32 StorNext Home Page: File System and Storage Manager 61

Figure 33 StorNext Home Page: File System Only 61

Figure 34 StorNext Configuration Wizard: Storage Manager..... 62

Figure 35 StorNext Configuration Wizard: File System Only..... 63

Figure 36 sndpscfg Configuration Utility 69

Figure 37 Client Configuration: Drive Mappings 74

Figure 38 Client Configuration: FS Name Servers 76

Figure 39 Client Configuration: Authentication 77

Figure 40 Client Configuration: Mount Options..... 79

Figure 41 Client Configuration: Syslog Level..... 80

Figure 42 Client Configuration: Cache Parameters 81

Figure 43 Client Configuration: Distributed LAN..... 82

Figure 44 Disk Device Labeler 84

Figure 45 Disk Labeler Dialog Box..... 85

Figure 46 Simple File System Configuration 87

Figure 47 File System Startup List..... 90

Figure 48 Server Administration 92

Figure 49 Server Administration: File System Properties..... 93

Figure 50 Server Administration: Stripe Group Properties..... 94

Figure 51 Server Administration: Quota Properties 96

Figure 52 Configuration Administrator 98

Figure 53 Server Configuration: Global Settings..... 99

Figure 54 Server Configuration: Disk Types..... 102

Figure 55 Server Configuration: Enter New Disk Type 103

Figure 56 Server Configuration: Disk Definitions..... 104

Figure 57 Server Configuration: Stripe Groups..... 105

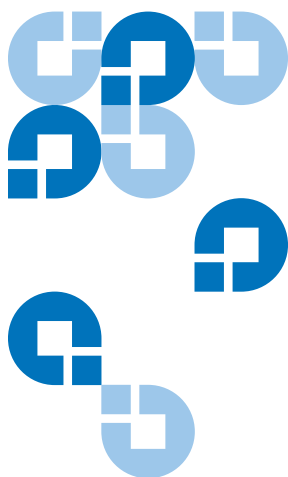
Figure 58 StorNext Remove Main Menu..... 110

Figure 59 Sharing Access to Files..... 144

Figure 60 Callback Flow for Initial RTIO Request 146

Figure 61 Callback Retraction Example..... 147

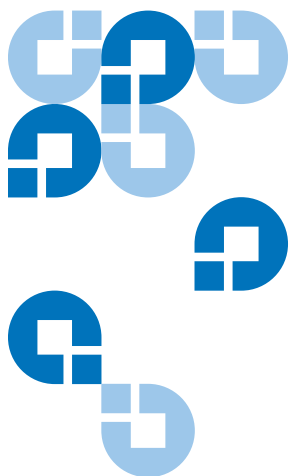
Figure 62 Non-Real-time Token Adjustments 149



Tables

Table 1	Storage Manager Supported Platforms.....	2
Table 2	Storage Manager Hardware Requirements.....	3
Table 3	Required Disk LUN Labels.....	6
Table 4	StorNext Support Directories.....	8
Table 5	Pre-Installation Script Recommendation Types.....	11
Table 6	StorNext Installation Main Menu Options.....	14
Table 7	File System Supported Platforms.....	19
Table 8	File System Hardware Requirements.....	20
Table 9	Required Disk LUN Labels.....	22
Table 10	SNFS Installation Main Menu Options.....	25
Table 11	StorNext Client Supported Platforms.....	37
Table 12	Distributed LAN Server Parameters.....	70
Table 13	Distributed LAN Client and Server Commands.....	71
Table 14	Client Configuration: Drive Mappings.....	74
Table 15	Client Configuration: FS Name Servers.....	76
Table 16	Client Configuration: Authentication.....	77
Table 17	Client Configuration: Distributed LAN.....	82

Table 18	Disk Labeler Dialog Box	85
Table 19	Simple File System Configuration	87
Table 20	File System Startup List	90
Table 21	Server Administration: File System Properties	93
Table 22	Server Administration: Stripe Group Properties	95
Table 23	Server Administration: Quota Properties	96
Table 24	Server Configuration: Global Settings.....	99
Table 25	Server Configuration: Enter New Disk Type	103
Table 26	Server Configuration: Disk Definitions.....	104
Table 27	Server Configuration: Stripe Groups.....	106
Table 28	QOS Configuration Keywords	138



Preface

StorNext provides high performance data sharing and intelligent archiving that is compatible with an industry-leading range of operating systems, server platforms, and storage devices.

StorNext includes two main components:

- StorNext File System (SNFS) is high performance data sharing software that lets applications on multiple operating systems access a single data set.
- StorNext Storage Manger (SNSM) is an intelligent, policy-based data mover that automatically moves and locates data across multiple storage tiers.

You can choose to install both StorNext File System and Storage Manager, or install StorNext File System only. In addition, StorNext includes client software that allows client systems to mount and work with StorNext file systems.

Audience

This document is intended for service professionals and system administrators who install StorNext software. The installer should have strong familiarity with the operating system on which StorNext is installed.

Only service professionals, experienced StorNext users, or individuals who have successfully completed StorNext training should configure StorNext. Attempting to configure StorNext without proper experience or training can affect system performance and may result in data loss.

Purpose

This document provides information about installing and configuring StorNext. The following topics are covered:

- System requirements
- Pre-installation tasks
- Installation
- Configuration
- Uninstalling StorNext

Document Organization

This document contains the following chapters:

- [Chapter 1](#), “Installing StorNext File System and Storage Manager,” provides system requirements, pre-installation information, and instructions for installing StorNext File System and Storage Manager on a metadata controller (MDC).
- [Chapter 2](#), “Installing StorNext File System,” provides system requirements, pre-installation information, and instructions for installing StorNext File System (without Storage Manager) on a metadata controller (MDC).
- [Chapter 3](#), “Installing the StorNext Client,” provides system requirements, pre-installation information, and instructions for installing the StorNext client software.
- [Chapter 4](#), “Configuring StorNext,” describes how to use the StorNext configuration wizard and the Windows configuration utilities to create a basic StorNext configuration, and how to configure a distributed LAN client or server.
- [Appendix A](#), “Uninstalling StorNext,” describes how to remove StorNext software from a server or client system.

Notational Conventions

This manual uses the following conventions:

Convention	Example
User input is shown in Arial regular font.	<code>./install.stornext</code>
User input variables are enclosed in angle brackets and are shown in Arial italic font.	<code>mkdir -p <mount point></code>
For UNIX and Linux commands, the command prompt is implied.	<code>./install.stornext</code> is the same as <code># ./install.stornext</code>
File and directory names, menu commands, button names, and window names are shown in Arial bold font.	/stornext/snfs1
Menu names separated by arrows indicate a sequence of menus to be navigated.	Admin > Download Client Software

The following formats indicate important information:

Note: Notes emphasize important information related to the main topic.

Tech Tip: Tech Tips provide technical information which may be helpful in performing the procedure.

Caution: Cautions indicate potential hazards to equipment and are included to prevent damage to equipment.

Warning: Warnings indicate potential hazards to personal safety and are included to prevent injury.

Related Documents

Documents related to StorNext are shown below:

Quantum StorNext Documentation

Document No.	Document Title	Document Description
6-01658-06	<i>StorNext User's Guide</i>	Provides in-depth information about using StorNext to create and manage StorNext File Systems.
6-01376-10	<i>StorNext File System Tuning Guide</i>	Provides information for maximizing file system performance.
6-01620-09	<i>StorNext Upgrade Guide</i>	Provides procedures for upgrading from earlier versions of StorNext.
6-01688-06	<i>StorNext CLI Reference Guide</i>	Provides procedures for performing common tasks using the command line interface.

Document No.	Document Title	Document Description
6-01564-02	<i>AMASS Conversion Guide</i>	Provides information about migrating systems running AMASS to StorNext.
6-00431-23	<i>StorNext 3.1.3 Release Notes</i>	Includes the latest product information, fixes, and issues.

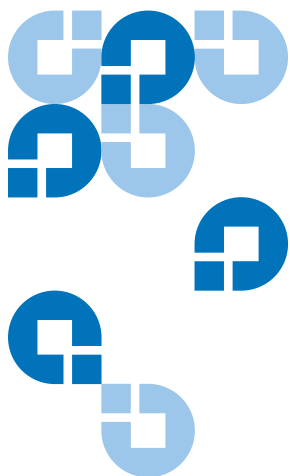
Contacting Quantum

More information about this product is available on the Quantum Service and Support website at www.quantum.com/ServiceandSupport. The Quantum Service and Support website contains a collection of information, including answers to frequently asked questions (FAQs). You can also access software, firmware, and drivers through this site.

To request a software upgrade, visit www.quantum.com/ServiceandSupport/Upgrade/Index.aspx. For further assistance, or if training is desired, contact Quantum Global Services:

North America	+1 800-284-5101 Option 5
EMEA	00800 9999 3822
Online Service and Support	www.quantum.com/OSR
World Wide Web	www.quantum.com/ServiceandSupport

(Local numbers for specific countries are listed on the Quantum Service and Support Website.)



Chapter 1 Installing StorNext File System and Storage Manager

This chapter describes how to install StorNext File System (SNFS) and StorNext Storage Manager (SNSM) on a metadata controller (MDC). Install both SNFS and SNSM for storage systems that require policy-based data movement (for example, systems that include tape drives or libraries).

To ensure successful operation, do the following tasks before installing StorNext:

- Make sure the MDC meets all operating system and hardware requirements (see [Storage Manager System Requirements](#)).
- Make sure all storage devices are correctly configured and are visible to the MDC (see [Getting Ready to Install](#) on page 5)
- (Optional) Run the pre-installation script to check for available disk space and view recommended locations for support directories (see [Pre-Installation Script](#) on page 8).

When you are ready to install StorNext File System and Storage Manager on the MDC, run the installation script (see [StorNext Installation Script](#) on page 12).

Note: To install only StorNext File System (without Storage Manager), see [Chapter 2](#), “Installing StorNext File System.” To install the StorNext client software, see [Chapter 3](#), “Installing the StorNext Client.”

Storage Manager System Requirements

To run StorNext File System and Storage Manager, the metadata controller must meet all operating system, hardware, and LAN requirements.

Operating System Requirements

The operating systems, kernel versions, and hardware platforms supported by StorNext SNFS and SNSM are presented in [Table 1](#). Make sure the MDC uses a supported operating system and platform, and if necessary update to a supported kernel version before installing StorNext.

Table 1 Storage Manager Supported Platforms

Operating System	Kernel	Platform
Red Hat Enterprise Linux 4	2.6.9-55.EL (Update 5) 2.6.9-67.EL (Update 6) 2.6.9-78.EL (Update 7)	x86 32-bit x86 64-bit Itanium 64-bit
Red Hat Enterprise Linux 5	2.6.18-53.EL (Update 1) 2.6.18-92.EL (Update 2)	x86 64-bit
SUSE Linux Enterprise Server 10	2.6.16.21-0.8 2.6.16-46-0.12 (SP1) 2.6.16-60-0.27 (SP2)	x86 32-bit x86 64-bit Itanium 64-bit
Sun Solaris 10	Generic 120011-14	SPARC 64-bit

Hardware Requirements

The minimum amount of RAM and available hard disk space required to run StorNext SNFS and SNSM are presented in [Table 2](#). Because support files (such as database and journal files) are stored on the MDC, the amount of local disk space that is required increases with the number of data files stored on StorNext file systems.

If necessary, upgrade the RAM and local disk storage in the MDC to meet the minimum requirements before installing StorNext.

Note: The RAM requirements in [Table 2](#) are for running StorNext File System and Storage Manager only. Running additional software (including the StorNext client software) requires additional RAM.

Table 2 Storage Manager
Hardware Requirements

File Systems	RAM	Disk Space
1-4*	2 GB	<ul style="list-style-type: none"> • For application binaries, log files, and documentation: up to 30GB (depending on system activity) • For support directories: 3 GB per million files stored • For metadata: 25GB minimum
5-8**	4 GB	

* Two CPUs recommended for best performance.

** Two CPUs required for best performance.

Note: If a file system uses deduplicated storage disks (DDisks), note the following additional requirements:

- Requires 2 GB RAM per DDisk in addition to the base RAM noted in [Table 2](#).
- Requires an additional 5GB of disk space for application binaries and log files.
- Deduplication is supported only for file systems running on a Linux operating system (x86 32-bit or x86 64-bit).
- An Intel Pentium 4 or later processor (or an equivalent AMD processor) is required. For best performance, Quantum recommends an extra CPU per blockpool.

Partitioning Local Hard Disks

StorNext can be installed on any local file system (including the root file system) on the MDC. However, for optimal performance, as well as to aid disaster recovery, follow these recommendations:

- Avoid installing StorNext on the root file system.
- Partition local hard disks so that the MDC has four available local file systems (other than the root file system) located on four separate hard drives.

Note: You can run the pre-installation script to help determine the estimated size of and optimal location for StorNext support directories. For more information, see [Pre-Installation Script](#) on page 8.

LAN Requirements

The following LAN requirements must be met before installing StorNext on the MDC:

- In cases where gigabit networking hardware is used and maximum StorNext performance is required, a separate, dedicated switched Ethernet LAN is recommended for the StorNext metadata network. If maximum StorNext performance is not required, shared gigabit networking is acceptable.
- A separate, dedicated switched Ethernet LAN is mandatory for the metadata network if 100 Mbit/s or slower networking hardware is used.
- The MDC and all clients must have static IP addresses.

Verify network connectivity with pings, and also verify entries in the **/etc/hosts** file.

- If using Gigabit Ethernet, disable jumbo frames and TOE (TCP offload engine).

Note: StorNext does not support file system metadata on the same network as iSCSI, NFS, CIFS, or VLAN data when 100 Mbit/s or slower networking hardware is used.

Getting Ready to Install

Before installing StorNext SNFS and SNSM, complete the following tasks to ensure successful installation:

- Correctly configure all storage devices (see [Configuring Storage Devices](#)).
- If using LUNs larger than 1 TB, decide on a label type and install any necessary operating system patches (see [Planning for LUNs Larger than 1 TB](#)).
- (Linux only) Install the kernel source code (see [Installing the Linux Kernel Source Code](#) on page 7).

Configuring Storage Devices

Before installing StorNext SNFS and SNSM, make sure that all LUNs are visible to the MDC. (A LUN, or logical unit number, is a logical device that corresponds to one or more disks, drives, or storage devices.)

If there are any connection issues, resolve them before installing StorNext. For assistance in configuring storage devices, refer to the documentation that came with the storage device, or contact the manufacturer.

Note: LUNs that you plan to use in the same stripe group must be the same size. Consider this when configuring storage devices. (For more information about stripe groups, see the *StorNext 3.1.3 User's Guide*.)

Caution: StorNext does not support the connection of multiple devices through fibre channel hubs. Multiple devices must be connected using fibre channel switches.

Planning for LUNs Larger than 1 TB

StorNext supports LUNs greater than 1 TB in size if they are allowed by the operating system. To enable support for 1 TB or larger LUNs, all StorNext LUNs must be correctly labeled according to the requirements

of the operating system running on the MDC as well as the operating system running on all connected clients. Disk LUNs can have one of three labels: VTOC, EFI, or sVTOC (short VTOC).

Required disk LUN label settings based on operating system and LUN size are presented in [Table 3](#). Before installing StorNext, decide what label type will be used, and then install any required operating system patches or updates (for both MDC and client) as indicated in the notes for [Table 3](#).

Note: After labeling a disk LUN, you must reboot systems running Solaris before they can access the disk LUN.

Table 3 Required Disk LUN Labels

Operating System	Label for LUNs < 1 TB	Label for LUNs 1–2 TB	Label for LUNs > 2 TB
Windows XP ^a	VTOC, EFI	VTOC, EFI	EFI, sVTOC
Windows 2003 Server	VTOC, EFI	VTOC, EFI	EFI, sVTOC
Linux 2.6 Kernel	VTOC, EFI	VTOC, EFI	EFI, sVTOC
Linux 2.4 Kernel	VTOC, EFI	VTOC, EFI	Not supported
Solaris 9 ^b	VTOC, EFI	EFI	Not supported
Solaris 10 ^c	VTOC, EFI	EFI	EFI
HP-UX ^a	VTOC, EFI	VTOC, EFI	EFI, sVTOC
IBM AIX ^d	VTOC, EFI	VTOC, EFI	EFI, sVTOC
SGI IRIX	VTOC	VTOC	Not supported
Apple Xsan 1.3 (MacOS X 10.4 Tiger)	VTOC, EFI	VTOC, EFI	EFI, sVTOC
Apple Xsan 1.3 (MacOS X 10.3 Panther) ^a	VTOC, EFI	VTOC, EFI	EFI, sVTOC

Operating System	Label for LUNs < 1 TB	Label for LUNs 1–2 TB	Label for LUNs > 2 TB
Apple Xsan 1.2 ^a	VTOC	VTOC	sVTOC

- a. Supports only the first 2 TB of LUNs larger than 2 TB.
- b. Support for EFI labels requires the Multiterabyte Disk Support patch.
- c. Support for 2 TB or larger LUNs requires Solaris 10 Update 2 (06/06).
- d. Supports only LUNs of 2.2 TB or less.

Note: For best results, Quantum recommends using persistent binding for disk LUNs. For more information, contact the vendor of your HBA (host bus adapter).

Installing the Linux Kernel Source Code

For management servers running Red Hat Enterprise Linux version 4 or 5, before installing SNFS and SNSM you must first install the kernel header files (shipped as the kernel-devel or kernel-devel-smp RPM, depending on your Linux distribution).

For servers running SUSE Linux Enterprise Server, you must install the first kernel source code (shipped as the kernel-source RPM). StorNext will not operate correctly if these packages are not installed. You can install the kernel header files or kernel source RPMs by using the installation disks for your operating system.

Verifying Hostname Length

The maximum hostname length for a StorNext server is limited to 25 characters. Before you begin the installation, verify that the destination hostname is not longer than 25 characters. (The hostname is read during the installation process, and if the hostname is longer than 25 characters the installation process could fail.)

Pre-Installation Script

The StorNext pre-installation script (**snPreInstall**) is included on the StorNext installation CD. When you run **snPreInstall**, you are prompted for information about your system. The pre-installation script uses this information to estimate the amount of local disk space required for SNFS and SNSM support directories. In addition, the script recommends the optimal locations for support directories.

StorNext uses five directories to store application support information. These directories are stored locally on the metadata controller, except for the **Backup** directory, which is stored on the managed file system.

The StorNext support directories are described in [Table 4](#).

Table 4 StorNext Support Directories

Support Directory	Description
Database /adic/database	Records information about where and how data files are stored.
Journal /adic/database_jnl	Records changes made to the database.
Mapping /adic/mapping_dir	Contains index information that enables quick searches on the file system.
Metadata /adic/database_meta	Stores metadata dumps (backups of file metadata).
Backup /backup	Contains configuration files and support data required for disaster recovery.

Before You Begin

Before running the pre-installation script, be prepared to answer the following questions:

- Is this an upgrade installation?
- What local file systems can be used to store support information?
- Which version of StorNext will be installed?

- What is the maximum number of directories expected (in millions)?
- What is the maximum number of files expected (in millions)?
- How many copies will be stored for each file?
- How many versions will be retained for each file?

Note: Keep in mind that storage needs typically grow rapidly. Consider increasing the maximum number of expected directories and files by a factor of 2.5x to ensure room for future growth.

Note: The pre-installation script ignores unmounted file systems. Before running **snPreInstall**, be sure to mount all local file systems that will hold StorNext support information.

Running snPreInstall

To run the pre-installation script, use the StorNext installation CD.

- 1 Log on to the MDC as root.
- 2 Mount the StorNext installation CD and change to the CD root directory.
- 3 List the installation directories on the CD. At the command prompt, type:

```
ls -l
```
- 4 Identify the correct installation directory for your operating system and hardware platform, and then change to that directory.

For example, for Red Hat Linux 4 running on an x86 64-bit platform, change to the **RedHat40AS_26x86_64** directory.

- 5 Run the script. At the command prompt, type:

```
./snPreInstall
```

The pre-installation script runs ([figure 1](#)).

Figure 1 Pre-Installation Script

```
-----  
This script will determine the disk space requirements for  
performing a StorNext install/upgrade. It will then report  
whether or not the local system has the required disk space  
for the operation. Output will be one of these four types:  
  
RECOMMEND: A recommendation of how to set up the  
StorNext directories on your system.  
NOTE: An advisory message indicating that the system  
can run with the given configuration, at the  
desired capacity, but the configuration  
is not optimal.  
SPACE: Due to space issues the system cannot be  
configured to run at the desired capacity  
without adding more disk space.  
Aborting: An error has occurred, or invalid input has been  
provided, and no further analysis can be done.  
  
The script will exit with one of these values:  
0 - disk space fine, ok to proceed with install/upgrade  
1 - disk space available, but not optimal file system layout  
2 - disk space not available for install/upgrade  
3 - invalid args etc. kept script from completing normally  
  
-----  
Are you upgrading ?? [y/<n>]:
```

6 Follow the onscreen instructions, and answer each question when prompted.

The script outputs results based on the information you entered.

Interpreting snPreInstall Output

After you enter all requested information, the pre-installation script outputs the following results:

- Estimated disk space required for each support directory.
- Recommended file system location for each support directory.

Tech Tip: For optimal performance, each support directory (other than the **Backup** directory) should be located on its own local file system, and each local file system should reside on a separate physical hard disk in the MDC.

There are three types of directory recommendations, as indicated by the text preceding the recommendation. The three types of recommendations are described in [Table 5](#).

Table 5 Pre-Installation Script Recommendation Types

Type	Description
RECOMMEND	The suggested directory locations will result in optimal system performance.
NOTE	The suggested directory locations are valid but system performance will not be optimal.
SPACE	Additional hard disk space is required to store the required support directories.

The pre-installation script bases directory location recommendations on the following criteria:

- To aid disaster recovery, the **Database** and **Journal** directories should be located on different file systems.
- For optimal performance, the **Metadata** directory should not be located on the same file system as (in order of priority) the **Journal**, **Database**, or **Mapping** directory.

Note: Do not change the location of support directories manually. Instead, use the installation script to specify the location for support directories. For more information, see [StorNext Installation Script](#).

StorNext Installation Script

When you are ready to install StorNext, use the StorNext installation script to install StorNext File System and Storage Manager on the metadata controller. The installation script also installs the client software on the MDC.

Launching the StorNext Installation Script

The StorNext installation script lets you choose installation configuration options and install StorNext. To launch the script, use the correct StorNext installation CD for your operating system.

- 1 Log on to the MDC as root.
- 2 Mount the StorNext installation CD and change to the CD root directory.

Note: When you mount a CD in a Red hat 4 or 5 system, CDs are mounted by default with a noexec (non-executable) option which prevents you from proceeding with the installation.

For Red Hat users only, before proceeding you must remount the CD by typing `mount -o remount, exec ...`

- 3 List the installation directories on the CD. At the command prompt, type:

```
ls -l
```

- 4 Identify the correct installation directory for your operating system and hardware platform, and then change to that directory.

For example, for Red Hat Linux 4 running on an x86 64-bit platform, change to the **RedHat40AS_26x86_64** directory.

- 5 Run the script. At the command prompt, type:

```
./install.stornext
```

The installation script runs ([figure 2](#)).

Figure 2 StorNext Installation Script

```
Stornext Install 3.1.3(4) MAIN MENU

  1) Installation Configuration
  2) Install stornext
  3) Show Status
  4) Quit

Enter your choice <2>: 
```

- 6 Type the number corresponding to a menu option and press **<Enter>**. Installation menu options are described in [Table 6](#).

Table 6 StorNext Installation
Main Menu Options

Menu Option	Description
1	Change installation options, including the location of application directories and the default media type (see Changing Installation Configuration Options).
2	Install StorNext using the installation options specified on the Configuration Menu (see Performing an Installation Operation on page 17).
3	View the status of an installation operation that is currently in progress.
4	Exit the StorNext installation script.

Changing Installation Configuration Options

Use the Configuration Menu to change StorNext installation options. You can specify the location of application and support directories and change the default media type for storage devices.

On the Main Menu, type 1 and press **<Enter>**. The Configuration Menu appears ([figure 3](#)).

Figure 3 Configuration Menu

```
Stornext 3.1.3 (5) Configuration Menu

  __ VALUE __                __ DESCRIPTION __
1) /usr/adic/perl           Perl installation directory
2) /usr/adic/docs           Docs installation directory
3) /usr/adic/PCL            Pcl installation directory
4) /adic/database           Dbm installation directory
5) /usr/adic/SRVLOG         Srvclog installation directory
6) /usr/adic/PSE            Pse installation directory
7) /usr/adic/MSM            Media Manager installation directory
8) /usr/adic/TSM            Tertiary Manager installation directory
9) /usr/adic/www            GUI installation directory
10) /usr/adic/apache         Web installation directory
11) /usr/cvfs                Disk Manager installation directory
12) /adic/database_meta     Metadumps directory
13) /adic/mapping_dir       TSM mapping directory
14) /adic/database_jnl      Database journal directory
15) LTO                      Default media type

Enter number to modify or hit <RETURN> to continue install █
```

Changing Application Directory Locations

When you first enter the Configuration Menu, it displays recommended locations for StorNext application directories based on the available file systems detected by the installation script. To accept the recommended directory locations and return to the Main Menu, press **<Enter>**.

Alternately, customize the installation by specifying the file systems where application and support files are stored.

- 1 On the Configuration Menu, type the number that corresponds to the directory location you want to customize (1–14), and then press **<Enter>**.

A list of available local file systems is shown.

- 2 To change the file system where the directory is located, type the name of the file system and press **<Enter>**.

- 3 To confirm the change, type *yes* and press **<Enter>**.
To customize additional directory locations, repeat steps 1–3.
- 4 When you are done customizing the installation, press **<Enter>** to return to the Main Menu.

Note: To help determine the optimal location for StorNext support directories, use the StorNext pre-installation script. For more information, see [Pre-Installation Script](#) on page 8.

Changing the Default Media Type

If you do not specify a different media type, the StorNext installation script selects LTO as the default media type for storage devices. If storage devices in your system use a different media type, change the default media type before installing StorNext.

- 1 On the Configuration Menu, type 15 and press **<Enter>**.
A list of valid default media types is shown. The valid media types are: DDISK, SDISK, LTO, LTOW, 3590, 3592, 9840, 9940, AITW, AIT, DLT4, and T10K.

Note: The DDISK option is available only for MDCs running x86 (32-bit or 64-bit) versions of Linux.

- 2 Type the correct default media type for storage devices in your system and press **<Enter>**.
- 3 To confirm the change, type *yes* and press **<Enter>**.
- 4 When you are done customizing the installation, press **<Enter>** to return to the Main Menu.

Note: For multiple libraries or systems with mixed media types, specify the media type used in the primary backup.

Performing an Installation Operation

To install StorNext using the options specified on the Configuration Menu, perform an installation operation.

- 1 On the Main Menu, type 2 and press **<Enter>**.

The StorNext installation script runs ([figure 4](#)). The script displays the current progress of the installation.

Figure 4 StorNext Installation Status

```
Stornext Install 3.1.3 (5) Status

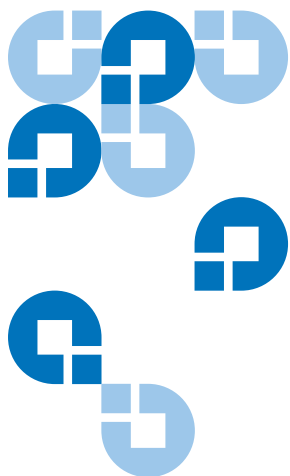
1)  Install Pre-Install  3.5.0(6375)           Complete
2)  Install perl        5.8.3_3.0.0(23)        Complete
3)  Install docs        3.5.0(6375)           Complete
4)  Install PCL         3.5.0(6375)           Complete
5)  Install database    5.9.28.95_1.4.3.0(12)       Complete
6)  Install SRVLOG      2.2.0(8)             Complete
7)  Install PSE         3.5.0(6375)           Complete
8)  Install MSM         3.5.0(6375)           Complete
9)  Install TSM         3.5.0(6375)           Complete
10) Install www          3.5.0(6375)           Complete
11) Install apache      2.0.54_2.0.54(25)       Complete
12) Install DSM         3.5.0(6375)           Complete
13) Install Post-Install 3.5.0(6375)           Complete

Hit <RETURN> to continue. █
```

- 2 When the installation is complete, press **<Enter>** to return to the Main Menu.
- 3 To exit the installation script, type 4 and press **<Enter>**.

Note: The script displays the URL at which the MDC can be accessed. Make a note of this information.

You can now access StorNext File System and Storage Manager, and run the configuration wizard. For more information, see [Chapter 4](#), “Configuring StorNext.”



Installing StorNext File System

This chapter describes how to install StorNext File System (SNFS) on a metadata controller (MDC). Install SNFS to create data sets that can be shared by clients and applications running on multiple operating systems.

To ensure successful operation, do the following tasks before installing StorNext:

- Make sure the MDC meets all operating system and hardware requirements (see [File System Requirements](#)).
- Make sure all storage devices are correctly configured and are visible to the MDC (see [Getting Ready to Install](#) on page 21).

When you are ready, install StorNext File System on the MDC using the appropriate method for your operating system (see [Installing StorNext File System on Linux or Unix](#) on page 24 or [Installing StorNext File System on Windows](#) on page 27).

Note: To install both StorNext File System and StorNext Storage Manager, see [Chapter 1](#), “Installing StorNext File System and Storage Manager.” To install the StorNext client software, see [Chapter 3](#), “Installing the StorNext Client.”

File System Requirements

To run StorNext File System, the metadata controller must meet all operating system and hardware requirements.

Operating System Requirements

The operating systems, releases and kernels, and hardware platforms supported by StorNext SNFS are presented in [Table 7](#). Make sure the MDC uses a supported operating system and platform, and if necessary update to a supported release or kernel version before installing StorNext.

Table 7 File System Supported Platforms

Operating System	Release or Kernel	Platform
Windows 2003 Server	SP2	x86 32-bit x86 64-bit
Windows 2008 Server	SP1	x86 32-bit x86 64-bit
Red Hat Enterprise Linux 4	2.6.9-55.EL (Update 5) 2.6.9-67.EL (Update 6) 2.6.9-78.EL (Update 7)	x86 32-bit x86 64-bit Itanium 64-bit
Red Hat Enterprise Linux 5	2.6.18-53.EL (Update 1) 2.6.18-92.EL (Update 2)	x86 64-bit
SUSE Linux Enterprise Server 10	2.6.16.21-0.8 2.6.16.46-0.12 (SP1) 2.6.16-60-0.27 (SP2)	x86 32-bit x86 64-bit Itanium 64-bit
Sun Solaris 10	Generic 120011-14	SPARC 64-bit

Hardware Requirements

The minimum amount of RAM and available hard disk space required to run StorNext SNFS are presented in [Table 8](#).

If necessary, upgrade the RAM and local disk storage in the MDC to meet the minimum requirements before installing StorNext.

Note: The RAM requirements in [Table 8](#) are for running StorNext File System only. Running additional software (including the StorNext client software) requires additional RAM.

Table 8 File System Hardware Requirements

File Systems	RAM	Disk Space
1-4*	2 GB	2 GB
5-8**	4 GB	4 GB

* Two CPUs recommended for best performance.

** Two CPUs required for best performance.

Note: On 32-bit versions of Windows, for best performance, run SNFS on a dedicated system. Do not run other applications on the MDC.

LAN Requirements

The following LAN requirements must be met before installing StorNext on the MDC:

- In cases where gigabit networking hardware is used and maximum StorNext performance is required, a separate, dedicated switched Ethernet LAN is recommended for the StorNext metadata network. If maximum StorNext performance is not required, shared gigabit networking is acceptable.
- A separate, dedicated switched Ethernet LAN is mandatory for the metadata network if 100 Mbit/s or slower networking hardware is used.
- The MDC and all clients must have static IP addresses.

Verify network connectivity with pings, and also verify entries in the **/etc/hosts** file.

- If using Gigabit Ethernet, disable jumbo frames and TOE (TCP offload engine).

Note: StorNext does not support file system metadata on the same network as iSCSI, NFS, CIFS, or VLAN data when 100 Mbit/s or slower networking hardware is used.

Getting Ready to Install

Before installing StorNext SNFS, complete the following tasks to ensure successful installation:

- Correctly configure all storage devices (see [Configuring Storage Devices](#) on page 21).
- If using LUNs larger than 1 TB, decide on a label type and install any necessary operating system patches (see [Planning for LUNs Larger than 1 TB](#) on page 22).
- (Linux only) Install the kernel source code (see [Installing the Linux Kernel Source Code](#) on page 23).

Configuring Storage Devices

Before installing StorNext SNFS, make sure that all LUNs are visible to the MDC. (A LUN, or logical unit number, is a logical device that corresponds to one or more disks, drives, or storage devices.)

If there are any connection issues, resolve them before installing StorNext. For assistance in configuring storage devices, refer to the documentation that came with the storage device, or contact the manufacturer.

Note: LUNs that you plan to use in the same stripe group must be the same size. Consider this when configuring storage devices. (For more information about stripe groups, see the *StorNext 3.1.3 User's Guide*.)

Caution: StorNext does not support the connection of multiple devices through fibre channel hubs. Multiple devices must be connected using fibre channel switches.

Planning for LUNs Larger than 1 TB

StorNext supports LUNs greater than 1 TB in size if they are allowed by the operating system. To enable support for 1 TB or larger LUNs, all StorNext LUNs must be correctly labeled according to the requirements of the operating system running on the MDC as well as the operating system running on all connected clients. Disk LUNs can have one of three labels: VTOC, EFI, or sVTOC (short VTOC).

Required disk LUN label settings based on operating system and LUN size are presented in [Table 9](#). Before installing StorNext, decide what label type will be used, and then install any required operating system patches or updates (for both MDC and client) as indicated in the notes for [Table 9](#).

Note: After labeling a disk LUN, you must reboot systems running Solaris before they can access the disk LUN.

Table 9 Required Disk LUN Labels

Operating System	Label for LUNs < 1 TB	Label for LUNs 1–2 TB	Label for LUNs > 2 TB
Windows XP ^a	VTOC, EFI	VTOC, EFI	EFI, sVTOC
Windows 2003 Server	VTOC, EFI	VTOC, EFI	EFI, sVTOC
Linux 2.6 Kernel	VTOC, EFI	VTOC, EFI	EFI, sVTOC
Linux 2.4 Kernel	VTOC, EFI	VTOC, EFI	Not supported
Solaris 9 ^b	VTOC, EFI	EFI	Not supported
Solaris 10 ^c	VTOC, EFI	EFI	EFI
HP-UX ^a	VTOC, EFI	VTOC, EFI	EFI, sVTOC

Operating System	Label for LUNs < 1 TB	Label for LUNs 1–2 TB	Label for LUNs > 2 TB
IBM AIX ^d	VTOC, EFI	VTOC, EFI	EFI, sVTOC
SGI IRIX	VTOC	VTOC	Not supported
Apple Xsan 1.3 (MacOS X 10.4 Tiger)	VTOC, EFI	VTOC, EFI	EFI, sVTOC
Apple Xsan 1.3 (MacOS X 10.3 Panther) ^a	VTOC, EFI	VTOC, EFI	EFI, sVTOC
Apple Xsan 1.2 ^a	VTOC	VTOC	sVTOC

- a. Supports only the first 2 TB of LUNs larger than 2 TB.
- b. Support for EFI labels requires the Multiterabyte Disk Support patch.
- c. Support for 2 TB or larger LUNs requires Solaris 10 Update 2 (06/06).
- d. Supports only LUNs of 2.2 TB or less.

Note: For best results, Quantum recommends using persistent binding for disk LUNs. For more information, contact the vendor of your HBA (host bus adapter).

Installing the Linux Kernel Source Code

For MDCs running Red Hat Linux or SUSE Linux Enterprise Server you must install the kernel source code as well as all tools required to compile the kernel before installing SNFS. StorNext will not operate correctly if the kernel source code is not installed.

The kernel source code can be installed using the installation disks for your operating system.

Installing StorNext File System on Linux or Unix

When you are ready to install StorNext, use the SNFS installation script to install StorNext File System on a metadata controller running Linux or Unix. The installation script also installs the client software on the MDC.

StorNext can be installed on any local file system (including the root file system) on the MDC. However, for optimal performance, avoid installing StorNext on the root file system.

Launching the SNFS Installation Script

The SNFS installation script lets you choose installation configuration options and install StorNext. To launch the script, use the correct StorNext installation CD for your operating system.

- 1 Log on to the MDC as root.
- 2 Mount the StorNext installation CD and change to the CD root directory.

Note: When you mount a CD in a Red hat 4 or 5 system, CDs are mounted by default with a noexec (non-executable) option which prevents you from proceeding with the installation.

For Red Hat users only, before proceeding you must remount the CD by typing `mount -o remount, exec ...`

- 3 List the installation directories on the CD. At the command prompt, type:

```
ls -l
```

- 4 Identify the correct installation directory for your operating system and hardware platform, and then change to that directory.

For example, for Red Hat Linux 4 running on an x86 64-bit platform, change to the **RedHat40AS_26x86_64** directory.

- 5 Run the script. At the command prompt, type:

```
./install.snfs
```

The installation script runs ([figure 5](#)).

Figure 5 SNFS Installation Script

```
Snfs Install 3.1.3(4) MAIN MENU
1) Installation Configuration
2) Install snfs
3) Show Status
4) Quit
Enter your choice <2>:
```

- 6 Type the number corresponding to a menu option and press **<Enter>**. Installation menu options are described in [Table 10](#).

Table 10 SNFS Installation Main Menu Options

Menu Option	Description
1	Change installation options for the location of application directories (see Changing Installation Configuration Options on page 25).
2	Install StorNext using the installation options specified on the Configuration Menu (see Performing an Installation Operation on page 26).
3	View the status of an installation operation that is currently in progress.
4	Exit the SNFS installation script.

Changing Installation Configuration Options

Use the Configuration Menu to change the location of application directories.

On the Main Menu, type 1 and press **<Enter>**. The Configuration Menu appears ([figure 6](#)).

Figure 6 Configuration Menu

```
Snfs 3.1.3 (5) Configuration Menu

  VALUE                                     DESCRIPTION
  -----                                     -
1) /usr/adic/perl                          Perl installation directory
2) /usr/adic/docs                          Docs installation directory
3) /usr/adic/PSE                           Pse installation directory
4) /usr/adic/www                           GUI installation directory
5) /usr/adic/apache                        Web installation directory
6) /usr/cvfs                               Disk Manager installation directory

Enter number to modify or hit <RETURN> to continue install []
```

When you first enter the Configuration Menu, it displays recommended locations for StorNext application directories based on the available file systems detected by the installation script. To accept the recommended directory locations and return to the Main Menu, press **<Enter>**.

Alternately, customize the installation by specifying the file systems where application and support files are stored.

- 1 On the Configuration Menu, type the number that corresponds to the directory location you want to customize (1–6), and then press **<Enter>**.

A list of available local file systems is shown.

- 2 To change the file system where the directory is located, type the name of the file system and press **<Enter>**.
- 3 To confirm the change, type **yes** and press **<Enter>**.

To customize additional directory locations, repeat steps 1–3.

- 4 When you are done customizing the installation, press **<Enter>** to return to the Main Menu.

Performing an Installation Operation

To install StorNext using the options specified on the Configuration Menu, perform an installation operation.

- 1 On the Main Menu, type 2 and press **<Enter>**.

The installation script runs ([figure 7](#)). The script displays the current progress of the installation.

Figure 7 StorNext Installation Status

```
Snfs Install 3.1.3(5) Status

1) Install Pre-Install 3.5.0(6375) Complete
2) Install perl 5.8.3_3.0.0(23) Complete
3) Install docs 3.5.0(6375) Complete
4) Install PSE 3.5.0(6375) Complete
5) Install www 3.5.0(6375) Complete
6) Install apache 2.0.54_2.0.54(25) Complete
7) Install DSM 3.5.0(6375) Complete
8) Install Post-Install 3.5.0(6375) Complete
```

Hit <RETURN> to continue. █

- 2) When the installation is complete, press <Enter> to return to the Main Menu.
- 3) To exit the installation script, type 4 and press <Enter>.

Note: The script displays the URL at which the MDC can be accessed. Make a note of this information.

You can now access StorNext File System and run the configuration wizard. For more information, see [Chapter 4](#), “Configuring StorNext.”

Installing StorNext File System on Windows

The StorNext setup wizard guides you through the process of installing StorNext File System on a metadata controller running Windows 2003 Server. (The installation wizard also installs the client software on the MDC.)

Before installing StorNext, remove any previously installed versions (see [Removing a Previous Version of StorNext](#) on page 28).

When you are ready, use the setup wizard to install StorNext (see [Running the Setup Wizard](#) on page 29).

(Optional) After installation, restore the previous client configuration (see [Restoring a Previous Client Configuration](#) on page 33).

Note: You must log on as an Administrator to install StorNext.

Removing a Previous Version of StorNext

If a previous version of StorNext exists on the system, you must remove it before installing the new version.

- 1 Insert the StorNext installation CD.
- 2 Browse to the root directory of the installation CD and double-click the file **SnfsSetup32.exe** (32-bit systems) or **SnfsSetup64.exe** (64-bit systems).

The **StorNext Installation** window appears ([figure 8](#)).

Figure 8 StorNext Installation Window: Remove StorNext



- 3 Click **Remove StorNext**.

A dialog box appears informing you that the current client configuration has been saved.

- 4 Note the name and location of the saved configuration file, and then click **OK**.
- 5 If prompted, click **Yes** to continue, and then click **OK** to finish the removal.
- 6 When the removal is complete, click **Yes** to reboot the system.

Note: After installing the new version of StorNext, you can restore the saved client configuration (see [Restoring a Previous Client Configuration](#) on page 33).

Running the Setup Wizard

To launch the setup wizard, use the correct StorNext installation CD for your operating system.

- 1 Insert the StorNext installation CD.
- 2 Browse to the root directory of the installation CD and double-click the file **SnfsSetup32.exe** (32-bit systems) or **SnfsSetup64.exe** (64-bit systems).

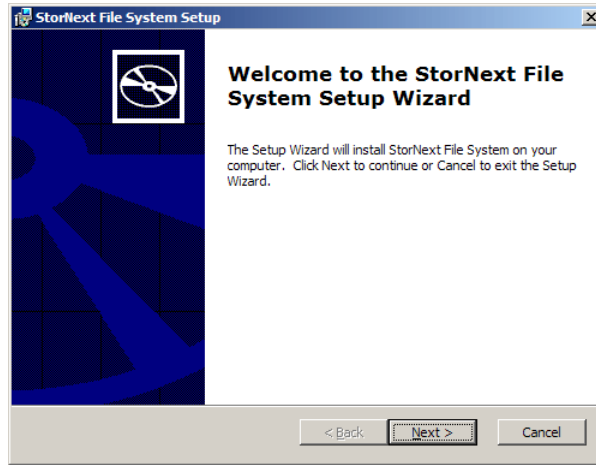
The **StorNext Installation** window appears ([figure 9](#)).

Figure 9 StorNext Installation Window: Install StorNext



- 3 Click **Install StorNext** to begin installation.
The StorNext setup wizard appears ([figure 10](#)).

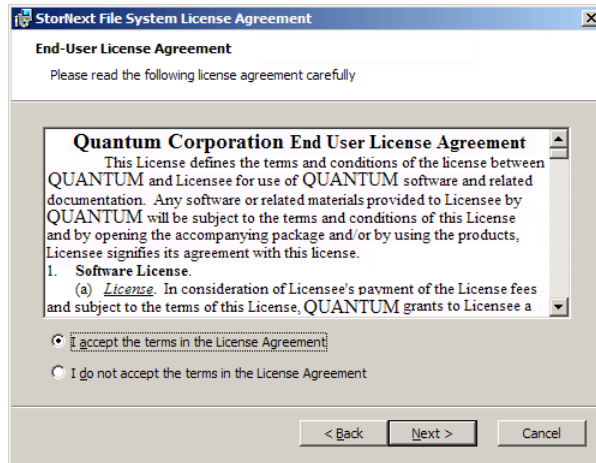
Figure 10 SNFS Setup:
Welcome



- 4 Click **Next** to continue.

The **License Agreement** window appears ([figure 11](#)).

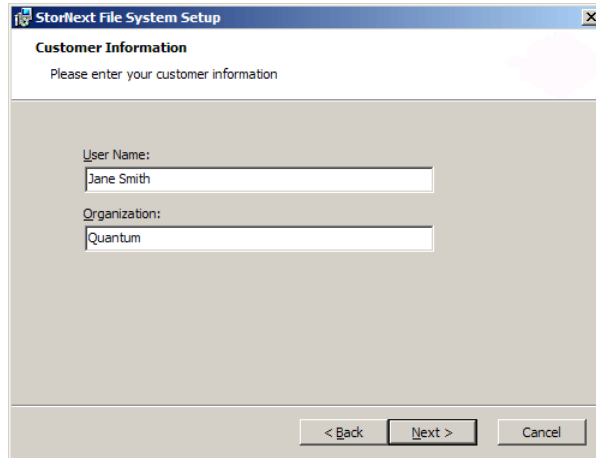
Figure 11 SNFS Setup: End-
User License Agreement



- 5 Click the option to accept the license agreement, and then click **Next** to continue.

The **Customer Information** window appears ([figure 12](#)).

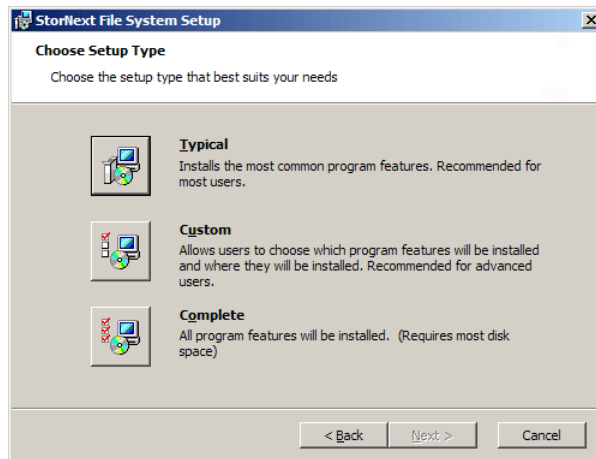
Figure 12 SNFS Setup:
Customer Information



- 6 Type your name and the name of your company or organization in the boxes, and then click **Next** to continue.

The **Choose Setup Type** window appears ([figure 13](#)).

Figure 13 SNFS Setup:
Choose Setup Type

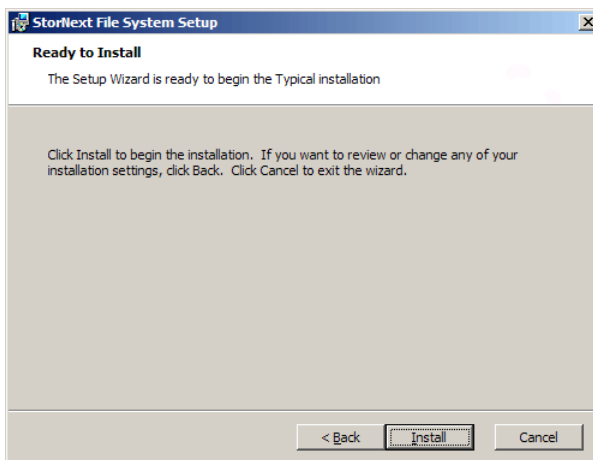


- 7 Click an installation option:
 - **Typical:** (Recommended) Installs StorNext File System, client software, and help files in the default location (**C:\Program Files\StorNext**).

- **Custom:** Lets you choose which components to install and specify an installation location. When ready, click **Next**.
- **Complete:** Same as a typical installation.

The **Ready to Install** window appears ([figure 14](#)).

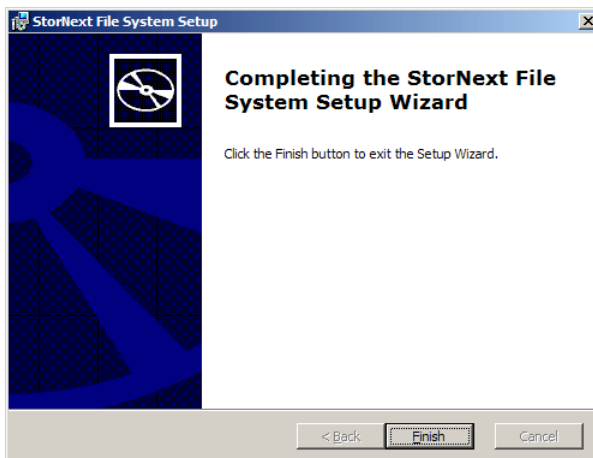
Figure 14 SNFS Setup: Ready to Install



8 Click **Install** to continue.

Wait while the setup wizard installs StorNext. When installation is complete, the **Finish** window appears ([figure 15](#)).

Figure 15 SNFS Setup: Finish



- 9 Click **Finish** to close the setup wizard.
- 10 On the **StorNext Installation** window, click **Exit**.

You are prompted to reboot the system.

- 11 Click **Yes** to reboot.

You can now configure StorNext File System. For more information, see [Chapter 4](#), “Configuring StorNext.” Or, to restore a previous client configuration, see the next section.

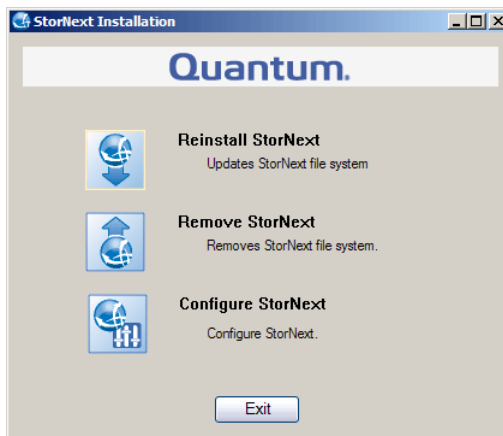
Restoring a Previous Client Configuration

If you saved a client configuration file (for example, when removing a previous version of StorNext), you can import it after installing StorNext. This configures StorNext using the same settings as the previous installation.

- 1 Insert the StorNext installation CD.
- 2 Browse to the root directory of the installation CD and double-click the file **SnfsSetup32.exe** (32-bit systems) or **SnfsSetup64.exe** (64-bit systems).

The **StorNext Installation** window appears ([figure 16](#)).

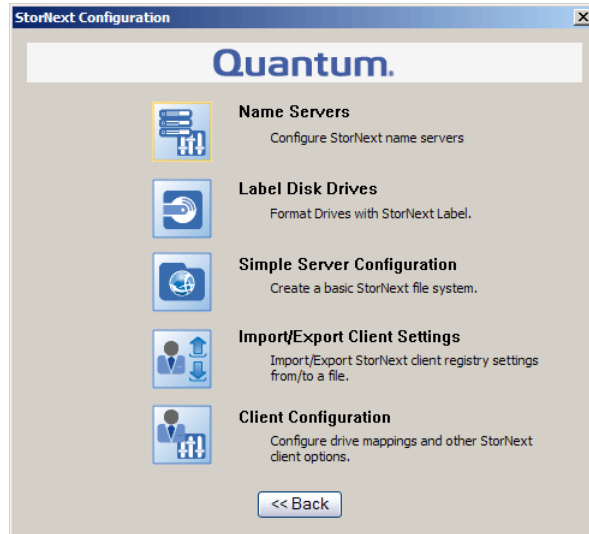
Figure 16 StorNext Installation Window: Configure StorNext



- 3 Click **Configure StorNext**.

The **StorNext Configuration** window appears ([figure 17](#)).

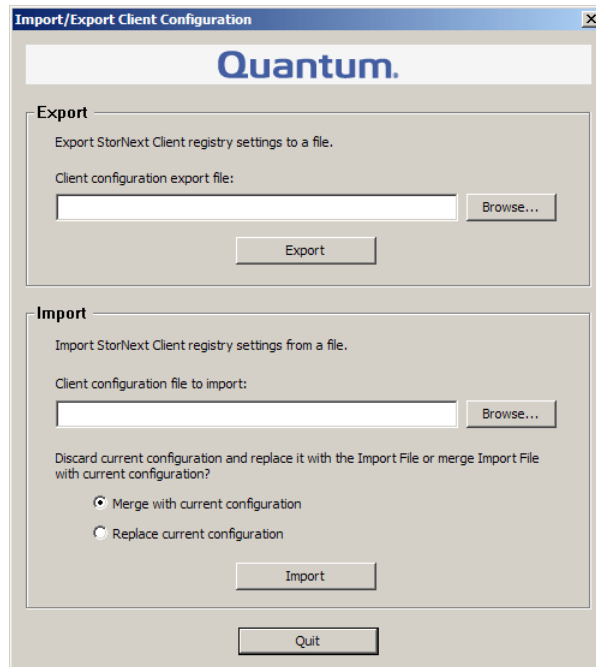
Figure 17 StorNext
Configuration Window



4 Click **Import/Export Client Settings**.

The **Import/Export Client Configuration** window appears ([figure 18](#)).

Figure 18 Import/Export Client Configuration Window



- 5 Under **Import**, click **Browse**. Locate the client configuration (*.reg) file to import, and then click **Open**.

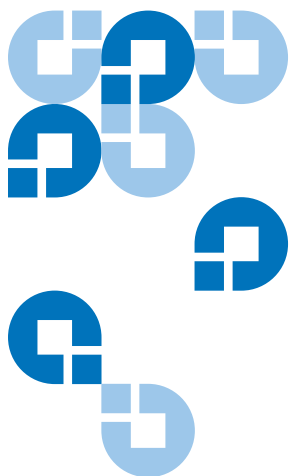
Client configuration files saved during removal of a previous version of StorNext are located in one of the following directories:

- **C:\SNFS\config**
- **C:\Program Files\StorNext\config**

- 6 Click an option for handling current configuration settings:
 - **Merge with current configuration:** The imported configuration is merged with the current configuration settings.
 - **Replace current configuration:** The imported configuration overwrites the current configuration settings.
- 7 Click **Import**, and then click **Yes** to confirm.

A message appears informing you the configuration settings were successfully added to the registry.

- 8 Click **OK**, and then click **Quit** to close the **Import/Export Client Configuration** window.



Installing the StorNext Client

This chapter describes how to install the StorNext client software. The StorNext client software lets you mount and work with StorNext file systems.

To ensure successful operation, make sure the client system meets all operating system and hardware requirements (see [Client System Requirements](#)).

To install the StorNext client software, first download the client software from the metadata controller (MDC) (see [Downloading the StorNext Client Software](#) on page 39).

After downloading the client software, install and configure it using the appropriate method for your operating system (see [Installing the StorNext Client on Linux or Unix](#) on page 42 or [Installing the StorNext Client on Windows](#) on page 51).

Note: Before installing the StorNext client software, you must install and configure StorNext on an MDC. For more information, see [Chapter 1](#), “Installing StorNext File System and Storage Manager” or [Chapter 2](#), “Installing StorNext File System.”

Client System Requirements

To run the StorNext client software, the client system must meet all operating system and hardware requirements.

Operating System Requirements

The operating systems, releases and kernels, and hardware platforms supported by the StorNext client software are presented in [Table 11](#). Make sure the client system uses a supported operating system and platform, and if necessary update to a supported release or kernel version before installing StorNext.

Table 11 StorNext Client Supported Platforms

Operating System	Release or Kernel	Platform
Windows XP	SP2 SP3	x86 32-bit x86 64-bit
Windows 2003 Server	SP2	x86 32-bit x86 64-bit
Windows Vista	SP1	x86 32-bit x86 64-bit
Red Hat Enterprise Linux 4	2.6.9-55.EL (Update 5) 2.6.9-67.EL (Update 6) 2.6.9-78.EL (Update 7)	x86 32-bit x86 64-bit Itanium 64-bit
Red Hat Enterprise Linux 5	2.6.18-53.EL (Update 1) 2.6.18-92.EL (Update 2)	x86 64-bit
SUSE Linux Enterprise Server 10	2.6.16.21-0.8 2.6.16-46-0.12 (SP1) 2.6.16-60-0.27 (SP2)	x86 32-bit x86 64-bit Itanium 64-bit
Sun Solaris 9	–	SPARC 64-bit

Operating System	Release or Kernel	Platform
Sun Solaris 10	Generic 120011-14 Generic 127128-11	SPARC 64-bit Opteron and Intel x86 64-bit
HP-UX	11i v2	Itanium 64-bit
IBM AIX	5.3	64-bit Power Architecture
SGI-IRIX	6.5.30	64-bit MIPS
Apple MacOS X 10.5	With Xsan 1.4.2 or Xsan 2.1.1	x86 32-bit

Hardware Requirements

To install and run the StorNext client software, the client system must meet the following minimum hardware requirements.

For SAN (FC-attached) clients or for distributed LAN clients:

- 1 GB RAM
- 500 MB available hard disk space

For SAN clients acting as a distributed LAN server:

- 2 GB RAM
- 500 MB available hard disk space

Note: Distributed LAN servers may require additional RAM depending on the number of file systems, distributed LAN clients, and NICs used. See the *StorNext 3.1.3 Release Notes* for distributed LAN server memory tuning guidelines.

Downloading the StorNext Client Software

The StorNext client software can be downloaded from a metadata controller. (To download the client software, the client system must have network access to the MDC.)

Note: You can download the client software only from MDCs running Linux or Unix.

- 1 On the client system, point a web browser to the URL (host name and port number) of the MDC. For example, **http://servername:81**

Use one of the following web browsers to access the MDC (make sure pop-up blockers are turned off):

- Internet Explorer 6.0 or later (including 7.0)
- Mozilla Firefox 1.5 or later (including 2.0 or later)

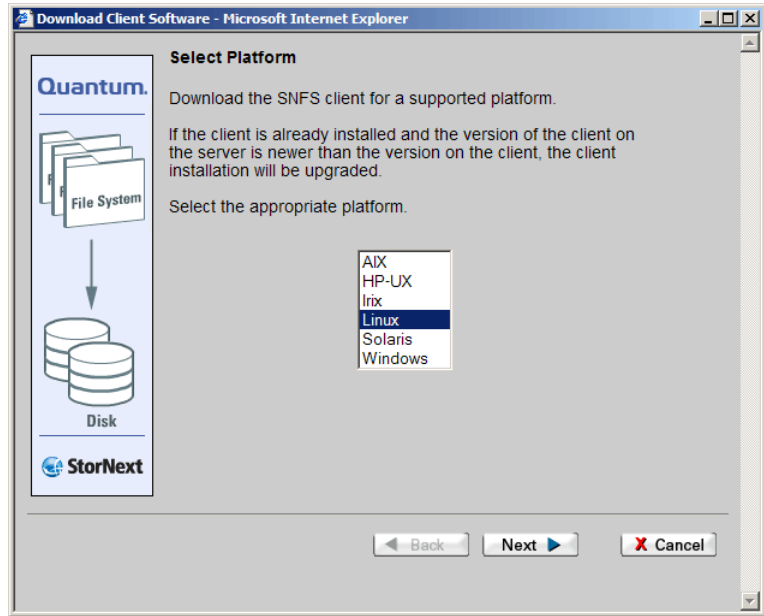
- 2 When prompted, type the username and password for the MDC, and then click **OK**. (The default value for both username and password is admin.)

The StorNext home page appears.

- 3 Do one of the following:
 - For a MDC running SNFS and SNSM: On the **Admin** menu, click **Download Client Software**.
 - For a MDC running SNFS only: On the home page, click **Download Client Software**.

The **Select Platform** window appears ([figure 19](#)).

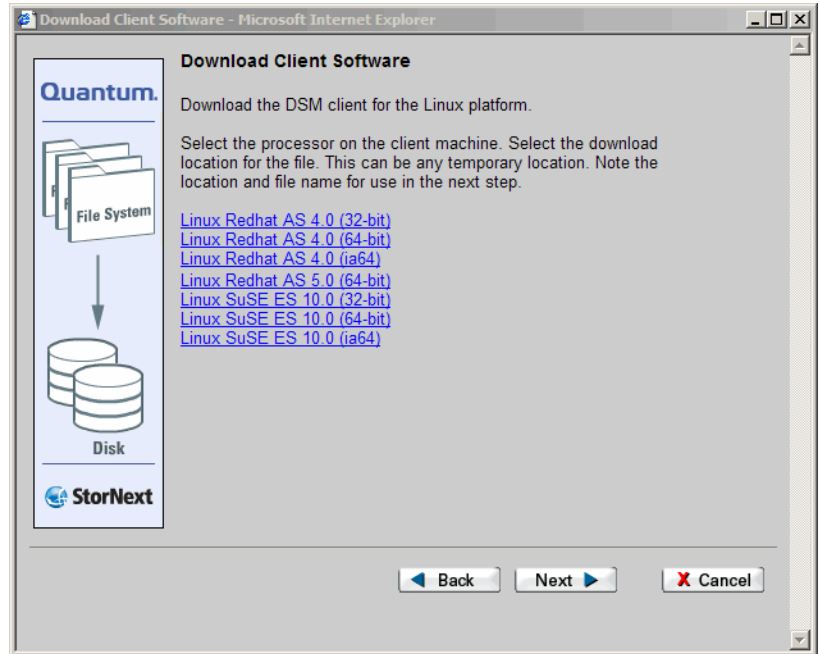
Figure 19 Select Platform Window



- 4 In the list, click the operating system running on the client system, and then click **Next**.

The **Download Client Software** window appears ([figure 20](#)).

Figure 20 Download Client Software Window



- 5 Click the download link that corresponds to your operating system version and hardware platform. (Depending on the operating system, you may have only one choice.)

For example, for Red Hat Linux 4 running on an x86 64-bit platform, click **Linux Redhat AS 4.0 (Intel 64bit)**.

- 6 When prompted, click **Save** or **OK** to download the file to the client system.

Make sure to note the file name and the location where you save the file.

- 7 After the download is complete, click **Cancel** to close the **Download Client Software** window.

Do not follow the onscreen installation instructions. Instead, continue with the correct procedure for your operating system:

- [Installing the StorNext Client on Linux or Unix](#) on page 42
- [Installing the StorNext Client on Windows](#) on page 51.

Installing the StorNext Client on Linux or Unix

After downloading the StorNext client software from the metadata controller, install it on the client system using the correct procedure for your operating system:

- [Installing the StorNext Client on Linux](#) on page 42
- [Installing the StorNext Client on Sun Solaris](#) on page 44
- [Installing the StorNext Client on HP-UX](#) on page 46
- [Installing the StorNext Client on IBM AIX](#) on page 47
- [Installing the StorNext Client on SGI IRIX](#) on page 49

Installing the StorNext Client on Linux

To run the StorNext client software on Red Hat Linux or SUSE Linux Enterprise, first install the client software package, and then configure the client.

Caution: Before installing the StorNext client software, you must install the kernel source code. You can install the kernel source code by using the installation disks for your operating system.

- 1 Log on to the client system as root.
- 2 Change to the directory where the client software archive file you downloaded from the MDC is located.
- 3 Extract the software archive file. At the command prompt, type:

```
tar xf <archive name>
```

where <archive name> is the name of the software archive file you downloaded from the MDC.

- 4 List the packages extracted from the software archive file. At the command prompt, type:

```
ls -l
```

Identify the correct package to install. The correct package begins with **snfs-client** and ends with the **.rpm** file name extension.

Note: The file that ends with **.rpm.md5sum** is a checksum file, not the client software package.

- 5 Install the client software package. At the command prompt, type:

```
rpm -ivh <package name>
```

where *<package name>* is the name of the client software package you identified in [step 4](#).
- 6 Configure the boot order for system services. Do one of the following:
 - For Red Hat Linux, at the command prompt, type:

```
chkconfig --level 3456 cvfs on
```
 - For SUSE Linux Enterprise, at the command prompt, type:

```
chkconfig -s raw 235  
chkconfig -s cvfs 345
```
- 7 Edit the **/usr/cvfs/config/fsnameservers** text file to contain the IP address of the MDC the client will connect to.

The **fsnameservers** file on the client must be exactly the same as on the MDC. If the **fsnameservers** file does not exist, use a text editor to create it.

Note: The **fsnameservers** file only needs to contain the name of the MDC. For example, if the MDC is named **snsrver**, then the **fsnameservers** file should contain a single line with a single word: **snsrver**

- 8 Create a mount point for the file system. At the command prompt, type:

```
mkdir -p <mount point>  
chmod 777 <mount point>
```

where *<mount point>* is the directory path where you want the file system to be mounted. For example: **/stornext/snfs1**

- 9 Configure the file system to automatically mount after reboot. To do this, edit the **/etc/fstab** file so that it contains the following line:

```
<file system> <mount point> cvfs verbose=yes 0 0
```

where *<file system>* is the name of the StorNext file system and *<mount point>* is the directory path created in [step 8](#).

- 10 Reboot the client system.

After reboot, the StorNext file system is mounted at the mount point you specified.

Note: To manually mount a file system, at the command prompt, type:

```
mount -t cvfs <file system> <mount point>
```

where *<file system>* is the name of the StorNext file system and *<mount point>* is the directory path where you want the file system to be mounted.

Installing the StorNext Client on Sun Solaris

To run the StorNext client software on Sun Solaris, first install the client software package, and then configure the client.

- 1 Log on to the client system as root.
- 2 Change to the directory where the client software archive file you downloaded from the MDC is located.
- 3 Extract the software archive file. At the command prompt, type:

```
tar xf <archive name>
```

where *<archive name>* is the name of the software archive file you downloaded from the MDC.
- 4 Install the client software package. At the command prompt, type:

```
pkgadd -d .
```
- 5 Type 1 to select the **ADICsnfs** package.
- 6 Type y to confirm installation of the **ADICsnfs** package. When installation is complete, type q to quit the installation program.

- 7 Edit the `/usr/cvfs/config/fsnameservers` text file to contain the IP address of the MDC the client will connect to.

The `fsnameservers` file on the client must be exactly the same as on the MDC. If the `fsnameservers` file does not exist, use a text editor to create it.

Note: The `fsnameservers` file only needs to contain the name of the MDC. For example, if the MDC is named `snsrver`, then the `fsnameservers` file should contain a single line with a single word: `snsrver`

- 8 Create a mount point for the file system. At the command prompt, type:

```
mkdir -p <mount point>
chmod 777 <mount point>
```

where `<mount point>` is the directory path where you want the file system to be mounted. For example: `/stornext/snfs1`

- 9 Configure the file system to automatically mount after reboot. To do this, edit the `/etc/vfstab` file so that it contains the following line:

```
<file system> - <mount point> cvfs 0 auto rw
```

where `<file system>` is the name of the StorNext file system and `<mount point>` is the directory path created in [step 8](#).

- 10 Reboot the client system.

After reboot, the StorNext file system is mounted at the mount point you specified.

Note: To manually mount a file system, at the command prompt type:

```
mount -F cvfs <file system> <mount point>
```

where `<file system>` is the name of the StorNext file system and `<mount point>` is the directory path where you want the file system to be mounted.

Installing the StorNext Client on HP-UX

To run the StorNext client software on HP-UX, first install the client software package, and then configure the client.

- 1 Log on to the client system as root.
- 2 Change to the directory where the client software archive file you downloaded from the MDC is located.
- 3 Extract the software archive file. At the command prompt, type:

```
tar xf <archive name>
```

where *<archive name>* is the name of the software archive file you downloaded from the MDC.
- 4 List the packages extracted from the software archive file. At the command prompt, type:

```
ls -l
```

Identify the correct package to install. The correct package begins with **snfs-client** and ends with the **.depot** file name extension.
- 5 Install the client software package. At the command prompt, type:

```
swinstall -s <package path and name> -x mount_all_filesystems=false \*
```

where *<package path and name>* is the full path and name of the client software package you identified in [step 4](#).
- 6 Edit the **/usr/cvfs/config/fsnameservers** text file to contain the IP address of the MDC the client will connect to.

The **fsnameservers** file on the client must be exactly the same as on the MDC. If the **fsnameservers** file does not exist, use a text editor to create it.

Note: The **fsnameservers** file only needs to contain the name of the MDC. For example, if the MDC is named **snsrver**, then the **fsnameservers** file should contain a single line with a single word: **snsrver**

- 7 Create a mount point for the file system. At the command prompt, type:

```
mkdir -p <mount point>
```

```
chmod 777 <mount point>
```

where *<mount point>* is the directory path where you want the file system to be mounted. For example: **/stornext/snfs1**
- 8 Configure the file system to automatically mount after reboot. To do this, edit the **/etc/fstab** file so that it contains the following line:

```
<mount point> <mount point> cvfs rw,fsname=<file system> 0 0
```

where *<mount point>* is the directory path created in [step 7](#) and *<file system>* is the name of the StorNext file system.
- 9 Reboot the client system.
After reboot, the StorNext file system is mounted at the mount point you specified.

Note: To manually mount a file system, at the command prompt, type:

```
mount -F cvfs <mount point> <mount point>
```

where *<mount point>* is the directory path where you want the file system to be mounted.

Installing the StorNext Client on IBM AIX

To run the StorNext client software on IBM AIX, first install the client software package, and then configure the client.

- 1 Log on to the client system as root.
- 2 Change to the directory where the client software archive file you downloaded from the MDC is located.
- 3 Extract the software archive file. At the command prompt, type:

```
tar xf <archive name>
```

where *<archive name>* is the name of the software archive file you downloaded from the MDC.

- 4 List the packages extracted from the software archive file. At the command prompt, type:

```
ls -l
```

Identify the correct package to install. The correct package begins with **snfs** and ends with the **.bff** file name extension.

- 5 Install the client software package. At the command prompt, type:

```
installp -ac -d <package name> all .
```

where *<package name>* is the name of the client software package you identified in [step 4](#).

- 6 Edit the **/usr/cvfs/config/fsnameservers** text file to contain the IP address of the MDC the client will connect to.

The **fsnameservers** file on the client must be exactly the same as on the MDC. If the **fsnameservers** file does not exist, use a text editor to create it.

Note: The **fsnameservers** file only needs to contain the name of the MDC. For example, if the MDC is named **snsrver**, then the **fsnameservers** file should contain a single line with a single word: **snsrver**

- 7 Create a mount point for the file system. At the command prompt, type:

```
mkdir -p <mount point>
```

```
chmod 777 <mount point>
```

where *<mount point>* is the directory path where you want the file system to be mounted. For example: **/stornext/snfs1**

- 8 Configure the file system to automatically mount. At the command prompt, type:

```
crfs -v cvfs -d <file system> -a verbose=yes -a type=cvfs -A yes -m <mount point>
```

where *<file system>* is the name of the StorNext file system and *<mount point>* is the directory path created in [step 7](#).

The StorNext file system is mounted at the mount point you specified.

Note: To manually mount a file system, at the command prompt, type:

```
mount <mount point>
```

where <mount point> is the directory path where you want the file system to be mounted.

Installing the StorNext Client on SGI IRIX

To run the StorNext client software on SGI IRIX, first install the client software package, and then configure the client.

- 1 Log on to the client system as root.
- 2 Change to the directory where the client software archive file you downloaded from the MDC is located.
- 3 Extract the software archive file. At the command prompt, type:

```
tar xf <archive name>
```

where <archive name> is the name of the software archive file you downloaded from the MDC.
- 4 Install the client software package. At the command prompt, type:

```
inst -f .
```
- 5 Type go to confirm installation. When installation is complete, type quit to quit the installation program.
- 6 Configure the boot order for system services. At the command prompt, type:

```
chkconfig cvfs on  
chkconfig verbose on
```
- 7 Edit the **/usr/cvfs/config/fsnameservers** text file to contain the IP address of the MDC the client will connect to.

The **fsnameservers** file on the client must be exactly the same as on the MDC. If the **fsnameservers** file does not exist, use a text editor to create it.

Note: The **fsnameservers** file only needs to contain the name of the MDC. For example, if the MDC is named **snsrver**, then the **fsnameservers** file should contain a single line with a single word: **snsrver**

- 8 Create a mount point for the file system. At the command prompt, type:

```
mkdir -p <mount point>
```

```
chmod 777 <mount point>
```

where *<mount point>* is the directory path where you want the file system to be mounted. For example: **/stornext/snfs1**

- 9 Configure the file system to automatically mount after reboot. To do this, edit the **/etc/fstab** file so that it contains the following line:

```
<file system> <mount point> cvfs verbose=yes 0 0
```

where *<file system>* is the name of the StorNext file system and *<mount point>* is the directory path created in [step 8](#).

- 10 Reboot the client system.

After reboot, the StorNext file system is mounted at the mount point you specified.

Note: To manually mount a file system, at the command prompt, type:

```
mount -t cvfs <file system> <mount point>
```

where *<file system>* is the name of the StorNext file system and *<mount point>* is the directory path where you want the file system to be mounted.

Installing the StorNext Client on Windows

The StorNext setup wizard guides you through the process of installing the StorNext client software on Windows XP, Windows 2003 Server, or Windows Vista.

Before installing StorNext, remove any previously installed versions (see [Removing a Previous Version of StorNext](#) on page 51).

When you are ready, use the setup wizard to install StorNext (see [Running the Setup Wizard](#) on page 52).

(Optional) After installation, restore the previous client configuration (see [Restoring a Previous Client Configuration](#) on page 56).

Note: You must log on as an Administrator to install StorNext.

If you are installing on Windows Vista, answer Yes to any messages asking if you want to run the installation process with administrative privileges.

Removing a Previous Version of StorNext

If a previous version of StorNext exists on the system, you must remove it before installing the new version.

- 1 Unzip the client software archive file you downloaded from the MDC.
- 2 Open the unzipped folder and double-click the client software installer file. This file is named **SnfsSetup32.exe** (32-bit systems) or **SnfsSetup64.exe** (64-bit systems).

The **StorNext Installation** window appears ([figure 21](#)).

Figure 21 StorNext Installation Window: Remove StorNext



3 Click **Remove StorNext**.

A dialog box appears informing you that the current client configuration has been saved.

- 4** Note the name and location of the saved configuration file, and then click **OK**.
- 5** If prompted, click **Yes** to continue, and then click **OK** to finish the removal.
- 6** When the removal is complete, click **Yes** to reboot the system.

Note: After installing the new version of StorNext, you can restore the saved client configuration (see [Restoring a Previous Client Configuration](#) on page 56).

Running the Setup Wizard

To launch the setup wizard, use the correct StorNext installation CD for your operating system, or use the client software installer you downloaded from the MDC.

- 1** If necessary, unzip the client software archive file you downloaded from the MDC.
- 2** Open the unzipped folder and double-click the client software installer file. This file is named **SnfsSetup32.exe** (32-bit systems) or **SnfsSetup64.exe** (64-bit systems).

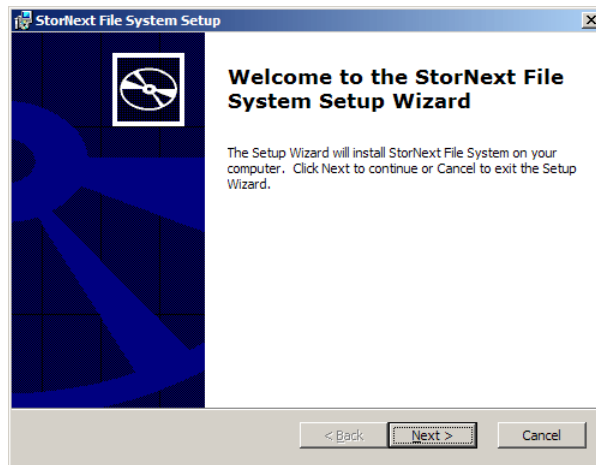
The **StorNext Installation** window appears ([figure 22](#)).

Figure 22 StorNext Installation Window: Install StorNext



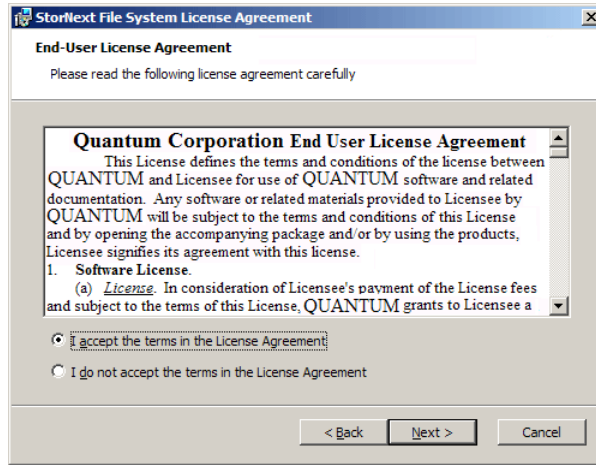
- 3 Click **Install StorNext** to begin installation.
The StorNext setup wizard appears ([figure 23](#)).

Figure 23 SNFS Setup: Welcome



- 4 Click **Next** to continue.
The **License Agreement** window appears ([figure 24](#)).

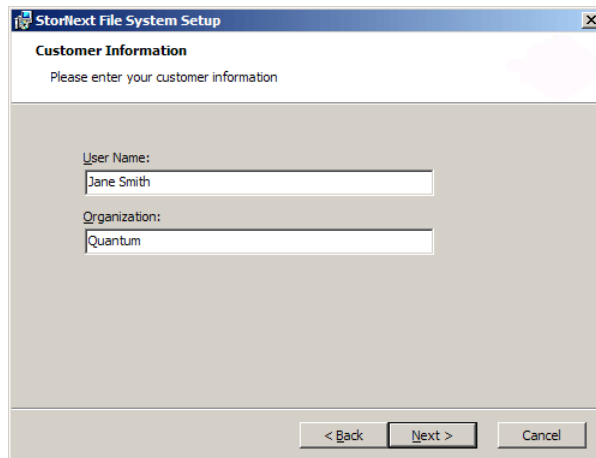
Figure 24 SNFS Setup: End-User License Agreement



- 5 Click the option to accept the license agreement, and then click **Next** to continue.

The **Customer Information** window appears ([figure 25](#)).

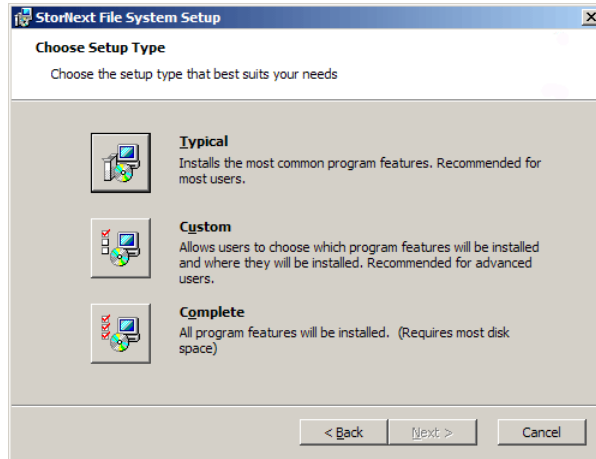
Figure 25 SNFS Setup: Customer Information



- 6 Type your name and the name of your company or organization in the boxes, and then click **Next** to continue.

The **Choose Setup Type** window appears, ([figure 26](#)).

Figure 26 SNFS Setup:
Choose Setup Type

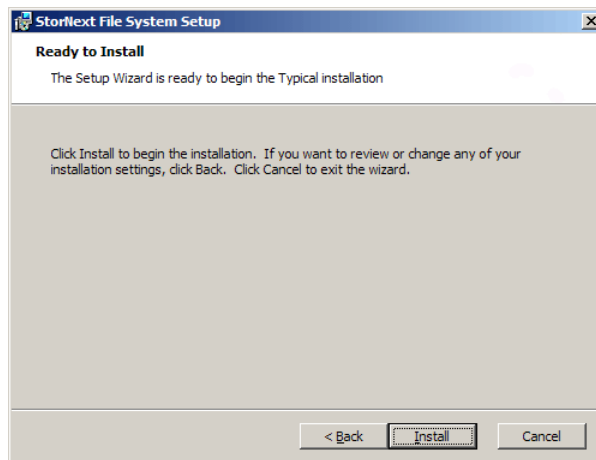


7 Click an installation option:

- **Typical:** (Recommended) Installs the StorNext client software and help files in the default location (**C:\Program Files\StorNext**).
- **Custom:** Lets you choose which components to install and specify an installation location. When ready, click **Next**.
- **Complete:** Same as a typical installation.

The **Ready to Install** window appears ([figure 27](#)).

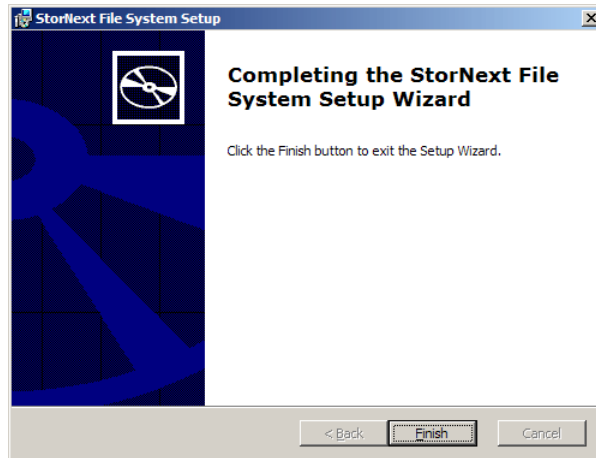
Figure 27 SNFS Setup: Ready
to Install



- 8 Click **Install** to continue.

Wait while the setup wizard installs StorNext. When installation is complete, the **Finish** window appears ([figure 28](#)).

Figure 28 SNFS Setup: Finish



- 9 Click **Finish** to close the setup wizard.
- 10 On the **StorNext Installation** window, click **Exit**.

You are prompted to reboot the system.

- 11 Click **Yes** to reboot.

You can now configure StorNext File System. For more information, see [Chapter 4](#), “Configuring StorNext.”

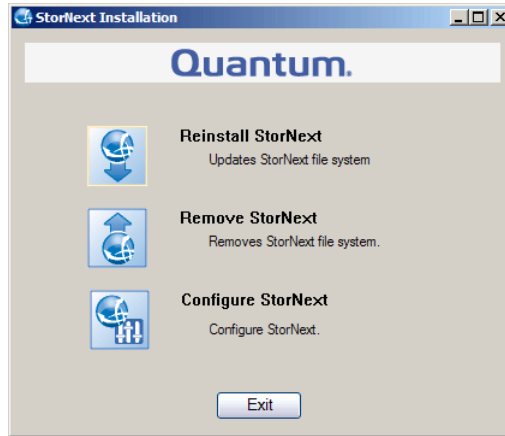
Restoring a Previous Client Configuration

If you saved a client configuration file (for example, when removing a previous version of StorNext), you can import it after installing StorNext. This configures StorNext using the same settings as the previous installation.

- 1 If necessary, unzip the client software archive file you downloaded from the MDC.
- 2 Open the unzipped folder and double-click the client software installer file. This file is named **SnfsSetup32.exe** (32-bit systems) or **SnfsSetup64.exe** (64-bit systems).

The **StorNext Installation** window appears ([figure 29](#)).

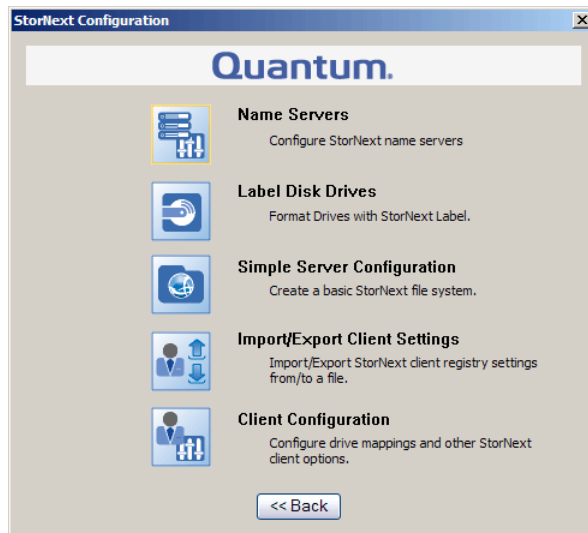
Figure 29 StorNext Installation Window: Configure StorNext



3 Click **Configure StorNext**.

The **StorNext Configuration** window appears ([figure 30](#)).

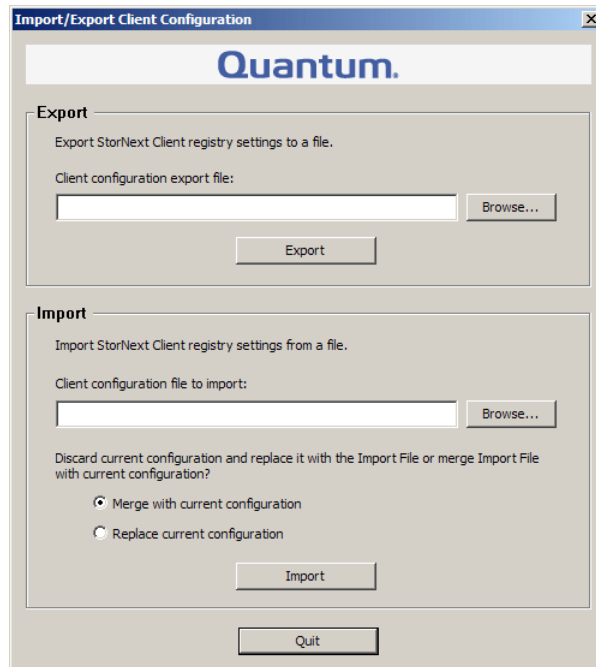
Figure 30 StorNext Configuration Window



4 Click **Import/Export Client Settings**.

The **Import/Export Client Configuration** window appears ([figure 31](#)).

Figure 31 Import/Export Client Configuration Window



- 5 Under **Import**, click **Browse**. Locate the client configuration (*.reg) file to import, and then click **Open**.

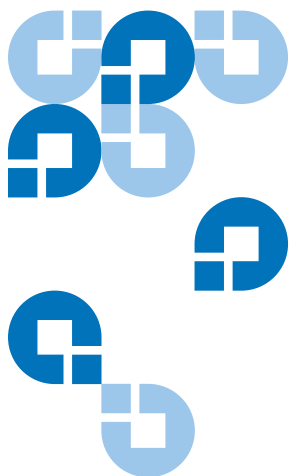
Client configuration files saved during removal of a previous version of StorNext are located in one of the following directories:

- C:\SNFS\config\
- C:\Program Files\StorNext\config\

- 6 Click an option for handling current configuration settings:
 - **Merge with current configuration:** The imported configuration is merged with the current configuration settings.
 - **Replace current configuration:** The imported configuration overwrites the current configuration settings.
- 7 Click **Import**, and then click **Yes** to confirm.

A message appears informing you the configuration settings were successfully added to the registry.

- 8 Click **OK**, and then click **Quit** to close the **Import/Export Client Configuration** window.



Chapter 4 Configuring StorNext

This chapter describes how to configure StorNext after installation. To configure StorNext, enter license information and create one or more file systems. In addition, on metadata controllers (MDCs) running StorNext Storage Manager, you can add storage devices and media, create storage policies, and set up e-mail notifications. In addition, Linux or Windows SAN clients can be configured as a distributed LAN client or a distributed LAN server.

For system running Unix or Linux, use the web-based GUI (graphical user interface) to access StorNext running on an MDC (see [StorNext GUI](#)).

The first time you log on to StorNext, the Configuration Wizard appears. The wizard guides you through the process of setting up StorNext (see [Configuration Wizard](#) on page 62).

To configure a StorNext client as a distributed LAN client or server, edit the distributed LAN configuration file (see [Configuring a Distributed LAN Client Server](#) on page 67).

For systems running Windows, use the Windows-based configuration utilities to set up server and client features (see [Windows Configuration Utilities](#) on page 72).

StorNext GUI

The StorNext GUI provides access to StorNext features and displays system status information. Use the StorNext GUI to create and work with file systems. In addition, on metadata controllers running Storage Manager, you can use the StorNext GUI to configure storage devices and media, and to set up storage policies.

Note: The StorNext GUI is available only for MDCs running on Unix or Linux. For MDCs running on Windows, use the configuration utilities to configure StorNext (see [Windows Configuration Utilities](#) on page 72).

Accessing the StorNext GUI

To log on to the StorNext GUI, use a web browser running on the MDC, or on any system that has network access to the MDC.

- 1 Point a web browser to the URL of the MDC.

The URL consists of the host name or IP address of the MDC followed by the port number at which StorNext can be reached. (The default port number is **81**.) For example: **http://servername:81**

Use one of the following web browsers to access the MDC (make sure pop-up blockers are turned off):

- Internet Explorer 6.0 or later (including 7.0)
 - Mozilla Firefox 1.5 or later (including 2.0 or later)
- 2 When prompted, type the user name and password for the MDC, and click **OK**. (The default value for both user name and password is admin.)

The StorNext home page appears. The appearance of the home page differs depending on if both Storage Manager and File System are installed on the MDC, or if File System only is installed.

The StorNext home page for an MDC running File System and Storage Manager is shown in [figure 32](#). The StorNext home page for an MDC running File System only is shown in [figure 33](#).

Figure 32 StorNext Home Page: File System and Storage Manager

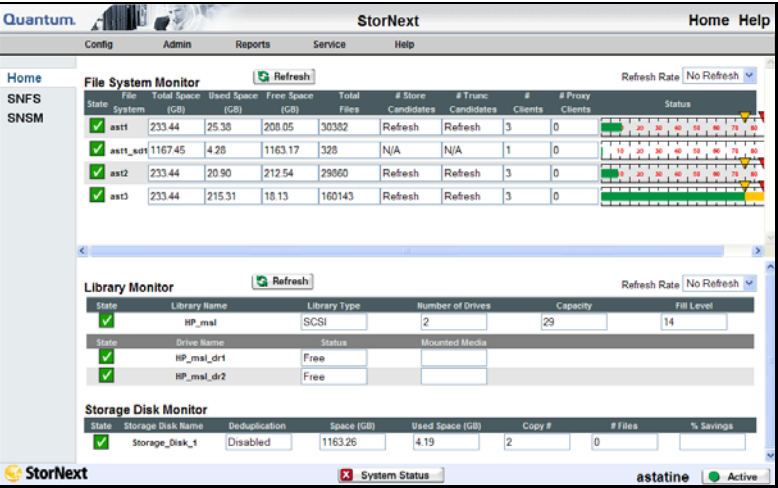
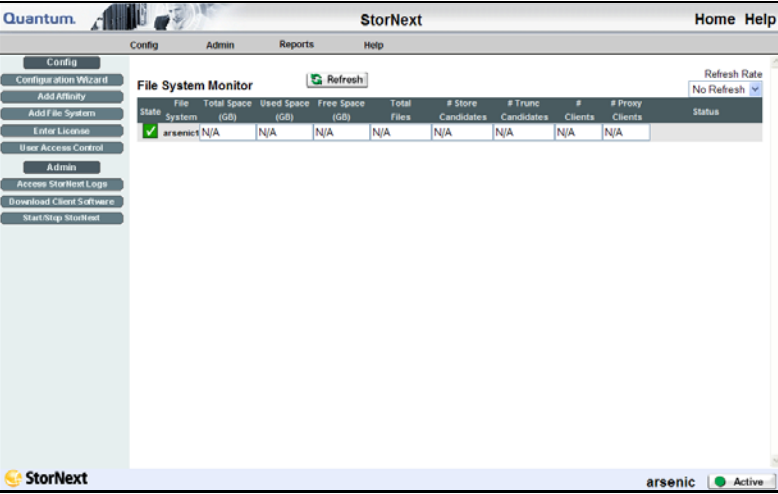


Figure 33 StorNext Home Page: File System Only



Configuration Wizard

The first time you log onto the StorNext GUI, the Configuration Wizard appears. The wizard guides you step-by-step through the process of configuring StorNext.

The appearance of the wizard differs depending on if both Storage Manager and File System are installed on the MDC, or if File System only is installed.

The Configuration Wizard for an MDC running File System and Storage Manager is shown in [figure 34](#). The Configuration Wizard for an MDC running File System only is shown in [figure 35](#).

Figure 34 StorNext
Configuration Wizard: Storage
Manager

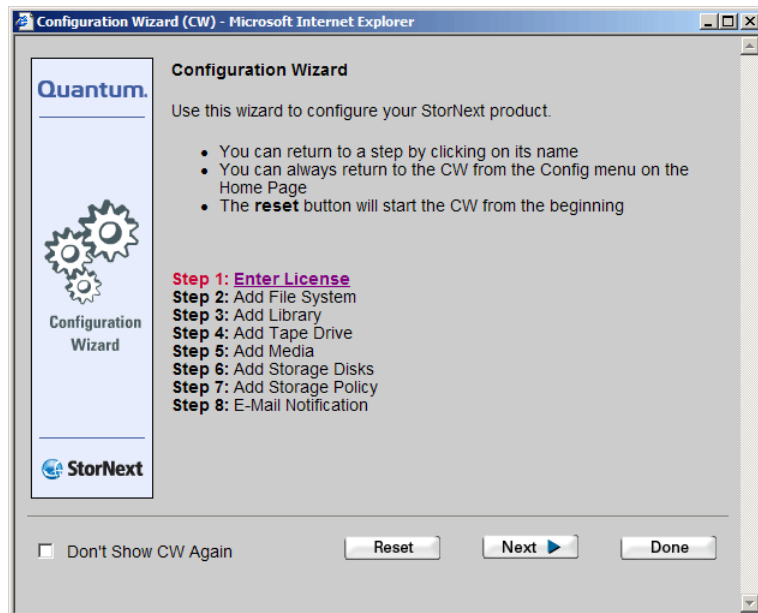


Figure 35 StorNext
Configuration Wizard: File
System Only



Displaying the Configuration Wizard

The Configuration Wizard appears each time you log on to StorNext until all steps of the wizard are completed. You can also control the wizard manually:

- To set the Configuration Wizard to not appear the next time you log in, select the **Don't Show CW Again** check box.
- To display the Configuration Wizard at any time, on the **Config** menu, click **Configuration Wizard**.

Using the Configuration Wizard

The Configuration Wizard consists of eight steps. (If Storage Manager is not installed on the MDC, only the first two steps appear.) The wizard lets you navigate between steps and tracks your progress as you complete each step.

- To go to the next step, click **Next**.
- To return to a previous step, click the step in the list.
- To start the wizard over from the beginning, click **Reset**.
- To exit the wizard, click **Done**.

The following sections describe each step of the Configuration Wizard. Each step consists of a separate wizard that guides you through a task. To complete a task, follow the onscreen instructions. To see more detailed instructions for completing a task, refer to the indicated section in the *StorNext User's Guide*.

Note: Using the Configuration Wizard to configure StorNext is optional. All configuration tasks can be accessed at any time using the StorNext main menu, as described in the following sections.

Step 1: Enter License

The Enter License Wizard guides you through the steps of entering a license string. A license string must be entered before you can configure or use StorNext.

You can generate a temporary license that is valid for 30 days. To obtain a permanent license, contact the Quantum Technical Assistance center at licenses@quantum.com and provide the following information:

- The product serial number from the StorNext box or CD.
- The number of client machines connecting to the MDC.
- The StorNext Server ID number. (This number can be found on the **Enter License String** window of the Enter License Wizard.)

To display the Enter License Wizard at any time, on the **Config** menu, click **Enter License**. For more information about entering a license, see Chapter 4, "Common StorNext Tasks," in the *StorNext User's Guide*.

Step 2: Add File System

The Add New File System Wizard guides you through the steps of creating and configuring a new file system. The wizard also lets you establish a mount point for the file system, specify disk block size, and customize stripe groups.

A file system is a shared data pool that can be accessed by client systems and applications. Each file system contains one or more stripe groups. (A stripe group is a logical volume that consists of one or more disks.)

To display the Add New File System Wizard at any time, on the **Config** menu, click **Add File System**. For more information about adding file systems, see Chapter 6, “Managing the File System,” in the *StorNext User’s Guide*.

Step 3: Add Library

The Add Library wizard guides you through the steps of adding and configuring a tape library or vault. The wizard lets you specify the type of library (SCSI, ACSLS, DAS, or vault) and set the appropriate parameters for that library type.

To display the Add Library Wizard at any time, on the **Config** menu, click **Add Library**. For more information about adding libraries, see Chapter 7, “Managing Libraries,” in the *StorNext User’s Guide*.

Step 4: Add Tape Drive

The Add Drive Wizard guides you through the steps of adding and configuring tape drives. The wizard lets you associate hardware devices with libraries and, if necessary, map them to slots.

To display the Add Drive Wizard at any time, on the **Config** menu, click **Add Tape Drive**. For more information about adding tape drives, see Chapter 8, “Managing Drives and Disks,” in the *StorNext User’s Guide*.

Step 5: Add Media

The Add Media Wizard guides you through the steps of adding media to a configured library. The wizard lets you specify a media type and, for vaults, specify media IDs. (Before adding media, make sure no tape drives contain media.)

To display the Add Media Wizard at any time, on the **Config** menu, click **Add Media**. For more information about adding media, see Chapter 9, “Managing Media,” in the *StorNext User’s Guide*.

Step 6: Add Storage Disks

The Add Storage Disk wizard guides you through the steps of adding external storage disks to a managed system. The wizard lets you specify which file systems to define as storage disks. Once defined, storage disks can be used as a target media type when creating storage policies.

To display the Add Storage Disk Wizard at any time, on the **Config** menu, click **Add Storage Disk**. For more information about adding storage disks, see Chapter 10, “Managing Storage Disks,” in the *StorNext User’s Guide*.

Step 7: Add Storage Policy

The Add New Storage Policy Wizard guides you through the steps of adding disk-to-disk policy classes to a managed system. Storage policies allow data to be intelligently moved between disks (stripe groups) without affecting the file name space.

To display the Add New Storage Policy Wizard at any time, on the **Config** menu, click **Add Storage Policy**. For more information about adding storage policies, see Chapter 11, “Data Migration Management,” in the *StorNext User’s Guide*.

Step 8: E-Mail Notification

The E-mail Notification Wizard guides you through the steps of setting up e-mail notifications on the MDC. The wizard lets you specify the SMTP server to use for outgoing e-mail, and the addresses to which system alerts and notifications are sent. (Make sure the SMTP server is configured before setting up e-mail notifications.)

To display the E-mail Notification Wizard at any time, on the **Config** menu, click **E-Mail Notification**. For more information about setting up e-mail notifications disks, see Chapter 4 “Common StorNext Tasks,” in the *StorNext User’s Guide*.

Configuring a Distributed LAN Client Server

Traditional StorNext SAN clients access data disks using a high throughput, low-latency fibre channel connection. In addition, using the distributed LAN client and server feature, StorNext clients can access data disks over a network instead of directly accessing disks.

A StorNext client running on Linux or Windows can be configured as a distributed LAN client or a distributed LAN server. (This is a licensed feature.)

- **Distributed LAN Server:** A distributed LAN server has direct access to data disks (using fibre channel) and makes the shared storage pool available to distributed LAN clients over a network.
- **Distributed LAN Client:** A distributed LAN client does not have direct access to data disks and instead accesses the shared storage pool by connecting to a distributed LAN server over a network. (Distributed LAN clients have full StorNext client functionality.)

Note: A StorNext client configured as a distributed LAN server requires a dedicated system. Do not run other applications or services on a system configured as a distributed LAN server.

To configure a Linux client as a distributed LAN client, see [Configuring a Distributed LAN Client on Linux](#). To configure a Linux client as a distributed LAN server, see [Configuring a Distributed LAN Server on Linux](#).

To configure a Windows client as a distributed LAN server or a distributed LAN client, use the Windows Client Configuration utility. For more information, see [Client Configuration](#) on page 73 and [Distributed LAN](#) on page 81.

Configuring a Distributed LAN Client on Linux

To configure a StorNext client as a distributed LAN client, edit mount options in the **/etc/fstab** file.

- 1 Stop the StorNext client. At the command prompt, type:

```
/etc/init.d/cvfs stop
```

- 2 Configure the client to mount a file system as a distributed LAN client. To do this, edit the **/etc/fstab** file so that it contains the following line:

```
<file system> <mount point> cvfs rw,diskproxy=client 0 0
```

where *<file system>* is the name of the StorNext file system and *<mount point>* is the directory path where the file system is mounted.

- 3 Start the StorNext client. At the command prompt, type:

```
/etc/init.d/cvfs start
```

Configuring a Distributed LAN Server on Linux

To configure a StorNext client as a distributed LAN server, edit mount options in the **/etc/fstab** file, and then configure distributed LAN server options.

- 1 Stop the StorNext client. At the command prompt, type:

```
/etc/init.d/cvfs stop
```

- 2 Configure the client to mount a file system as a distributed LAN server. To do this, edit the **/etc/fstab** file so that it contains the following line:

```
<file system> <mount point> cvfs rw,diskproxy=server 0 0
```

where *<file system>* is the name of the StorNext file system and *<mount point>* is the directory path where the file system is mounted.

- 3 Change to the **/usr/cvfs/bin/** directory.
- 4 Launch the StorNext distributed LAN server configuration utility. At the command prompt, type:

```
./sndpscfig -e
```

Note: To get help for the **sndpscfig** utility, at the command prompt, type: `./sndpscfig -h`

The distributed LAN server configuration utility appears ([figure 36](#)).

Figure 36 sndpscfcg
Configuration Utility

```
# Disk Proxy Server Configuration
# -----

# =====
# Tunable Parameters
# =====

# Un-comment and modify any of the following lines to override the default
# values for tunable parameters.
#tcp_window_size_kb 64
#transfer_buffer_size_kb 256
#transfer_buffer_count 16
#server_buffer_count 8
#daemon_threads 8

# =====
# Interface Configuration
# =====

# One or more interfaces must be configured for Disk Proxy Server I/O.

# Un-comment one (and only one) of the 2 lines below to allow Disk Proxy
# Server I/O on interface 'eth0' and to select the address to listen for
# connections on.
#interface eth0
interface eth0 address fec0::215:f2ff:fe68:afa2
```

5 Edit the default distributed LAN server configuration:

- (Required) Uncomment (delete the # next to) the line that corresponds to the network interface used by the distributed LAN server when connecting to distributed LAN clients. (For best performance, do not choose the network used for metadata.)
- (Optional) To change a tunable parameter from the default value, uncomment the parameter, and then specify a new value. [Table 12](#) describes the tunable parameters.

Note: The distributed LAN server configuration utility uses the default text editor. If a default text editor has not been specified, the utility uses the vi editor.

Table 12 Distributed LAN
Server Parameters

Field / Button	Description
tcp_window_size_kb	The TCP window size (in KB) used by the distributed LAN server. (Default: 64)
transfer_buffer_size_kb	The transfer buffer size (in KB) used by the distributed LAN server. A larger buffer may increase performance for larger files. (Default: 256)
transfer_buffer_count	The number of transfer buffers used by the distributed LAN server. This parameter is used only by Windows servers and clients. Linux servers pass the value of this parameter to Windows clients. (Default: 16)
server_buffer_count	The number of I/O buffers allocated for each network interface on the distributed LAN server. This parameter is used only by Linux servers. (Default: 8)
daemon_threads	The maximum number of daemon threads used by the distributed LAN server. (Default: 8)

- 6 When you are done making edits, type :x to save and close the configuration file.

The configuration is saved in the file **dpserver** in the **/user/cvfs/config/** directory.

Note: To edit this file at a later date, you can run the **sndpscfcg** utility again or edit the **dpserver** file directly.

- 7 Start the StorNext client. At the command prompt, type:

```
/etc/init.d/cvfs start
```

Creating an Override Configuration

By default, the settings specified in the **dpserver** configuration file are used for all file systems mounted by the distributed LAN server. To use different settings for a file system, create an override configuration file for that file system. At the command prompt, type:

```
./sndpscfg -E <file system>
```

where *<file system>* is the name of the file system to which the override settings apply. Edit the configuration file, and then save and exit. A new configuration file with the name **dpserver.<file system>** is created in the **/user/cvfs/config/** directory.

Using Distributed LAN Client and Server Commands

Use the cvadmin commands described in [Table 13](#) to see information about distributed LAN servers and clients. (For more information about using cvadmin commands, see the *CLI Reference Guide*.)

Table 13 Distributed LAN Client and Server Commands

Command	Description
proxy	Lists all distributed LAN servers for the currently selected file system.
proxy long	Lists all distributed LAN servers for the currently selected file system, as well as tunable parameters and attached disks.
proxy who <i><distributed LAN client></i>	Lists distributed LAN servers connected to the specified distributed LAN client, as well as current I/O statistics.
proxy who <i><distributed LAN server></i>	Lists distributed LAN clients connected to the specified distributed LAN server, as well as current I/O statistics.

Windows Configuration Utilities

To configure StorNext File System or the StorNext client software on Windows operating systems, use the Windows configuration utilities. The configuration utilities let you set up a Windows-based metadata controller, configure a StorNext client, and work with StorNext file systems.

To run a configuration utility, on the Windows **Start** menu, click **All Programs > StorNext File System**, and then click the utility.

The StorNext client software includes the following configuration utilities:

- [Client Configuration](#) on page 73
- [Disk Device Labeler](#) on page 83
- [License Identifier](#) on page 86
- [Simple File System Configuration](#) on page 86
- [Start File System Services](#) on page 88
- [Stop and Remove File System Services](#) on page 88
- [Stop File System Services](#) on page 88
- [Version Information](#) on page 88

StorNext File System server includes all the configuration utilities installed by the client software as well as the following additional utilities:

- [Check \(Read-Only\) a File System](#) on page 89
- [File System Startup List](#) on page 89
- [Re-initialize a File System](#) on page 91
- [Repair a File System](#) on page 91
- [Server Administration](#) on page 91
- [Server Configuration](#) on page 97

Client Configuration

The Client Configuration utility lets you view and modify properties for the StorNext client software. Use the utility to add name servers, map file systems to drives, and configure a distributed LAN server or a distributed LAN client.

To run the Client Configuration utility, on the Windows **Start** menu, click **All Programs > StorNext File System > Client Configuration**.

The Client Configuration utility includes six tabs:

- [Drive Mappings](#) on page 73
- [FS Name Servers](#) on page 75
- [Authentication](#) on page 76
- [Mount Options](#) on page 78
- [Syslog Level](#) on page 79
- [Cache Parameters](#) on page 80
- [Distributed LAN](#) on page 81

Click a tab to view or modify StorNext client properties. After making changes on one or more tabs, click **OK** to save the changes. A message appears prompting you to restart the system. Click **Yes**. Most changes do not take affect until the system is restarted.

Drive Mappings

To access a StorNext file system, it must be mapped to a local drive letter on the client system.

Use the **Drive Mappings** tab ([figure 37](#)) to map file systems to local drives. [Table 14](#) describes the fields on the **Drive Mappings** tab.

<p>Note: You must specify a file system name server on the FS Name Servers tab before mapping drives.</p>

Note: You must disable the Windows Recycle Bin for each local drive that is mapped to a file system. Right click the **Recycle Bin** icon and click **Properties**. On the **Global** tab, click **Configure Drives Independently**. On the appropriate **Local Disk** tab, select the **Do not move files to the Recycle Bin** check box, and then click **OK**.

Figure 37 Client Configuration:
Drive Mappings

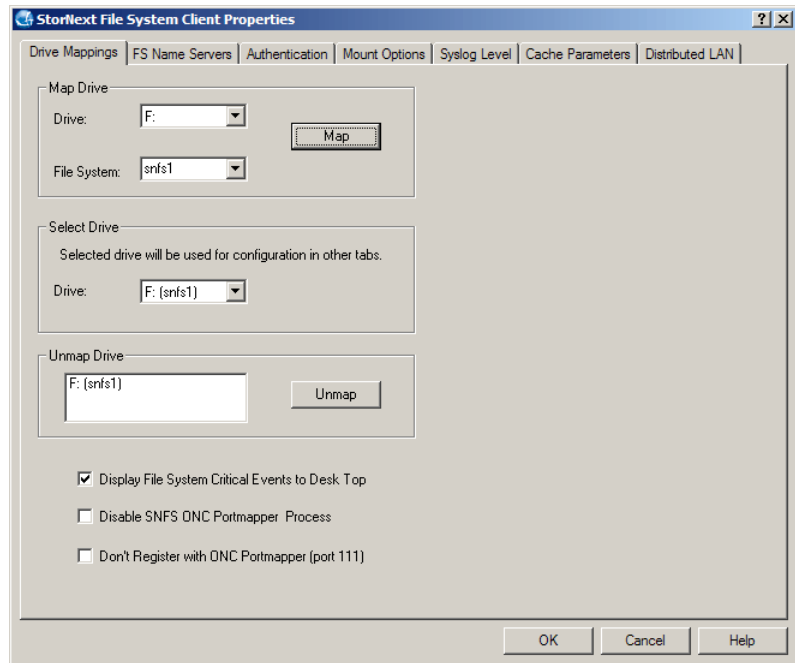


Table 14 Client Configuration:
Drive Mappings

Field / Button	Description
Map Drive - Drive	Select a local drive letter to associate with a file system.
Map Drive - File System	Type or select the name of the file system to associate with the selected local drive letter.
Map Drive - Map	Click to associate the selected local drive letter with the selected file system.

Field / Button	Description
Select Drive - Drive	Select the mapped drive to configure on the other tabs of the Client Configuration utility.
Unmap Drive	Select a drive to unmap.
Unmap	Click to unmap the selected drive.
Display File System Critical Events to Desk Top	Select to display a notification dialog box if a critical event occurs. (Because the dialog box must be manually dismissed, clear this check box for unattended client systems.)
Disable SNFS ONC Portmapper Process	Select to disable the SNFS portmapper service. (Disable this service only if a product that provides equivalent functionality is installed, for example, the portmapper installed with Microsoft Services for Unix).
Don't Register with ONC Portmapper (port 111)	Select to not register with the SNFS portmapper service.

FS Name Servers

To access a file system, you must first specify the name server (StorNext host) where the file system is located. The first host in the list is the primary name server. Additional hosts are backups for use in the event of a failover.

Use the **FS Name Servers** tab ([figure 38](#)) to specify the primary StorNext host. [Table 15](#) describes the fields on the **FS Name Servers** tab.

Note: Make sure the host list is the same for all clients on the SAN. An incorrect or incomplete host list may prevent the client from connecting to the file system.

Figure 38 Client Configuration:
FS Name Servers

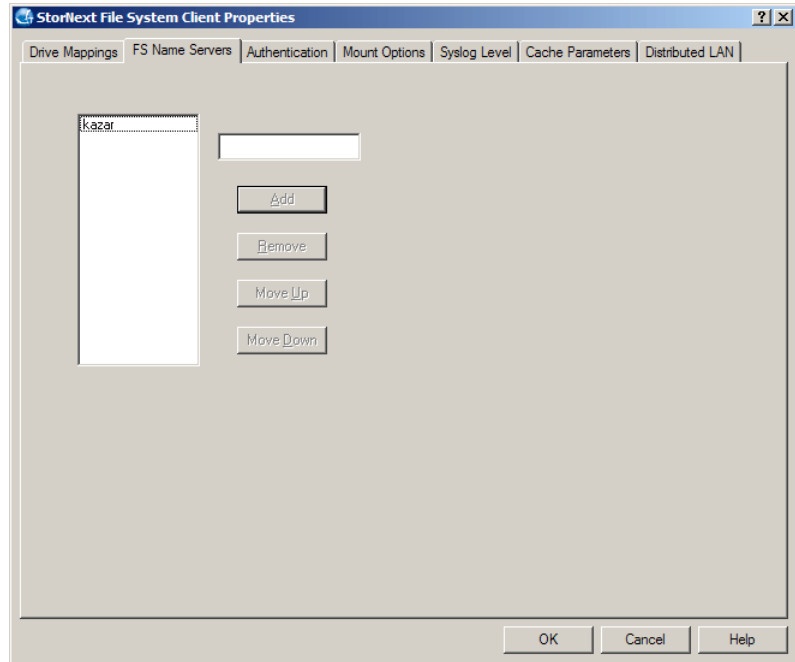


Table 15 Client Configuration:
FS Name Servers

Field / Button	Description
Add	Click to add the name server entered in the box.
Remove	Click to remove the name server selected in the list.
Move Up	Click to move the selected name server up in the list.
Move Down	Click to move the selected name server down in the list.

Authentication

If a Windows client accesses file systems that are also accessed by non-Windows clients, you must specify an authentication method: Active Directory, PCNFSD, or NIS. This method is used to map the Windows

user to a user ID and group on the SAN. (Changes are applied when you click **Apply**. You do not need to restart the client system.)

Use the **Authentication** tab (figure 39) to specify an authentication method. Table 16 describes the fields on the **Authentication** tab.

Note: If your StorNext installation is Windows-only and you do not plan to add non-Windows clients, you do not need to specify an authentication method.

Figure 39 Client Configuration:
Authentication

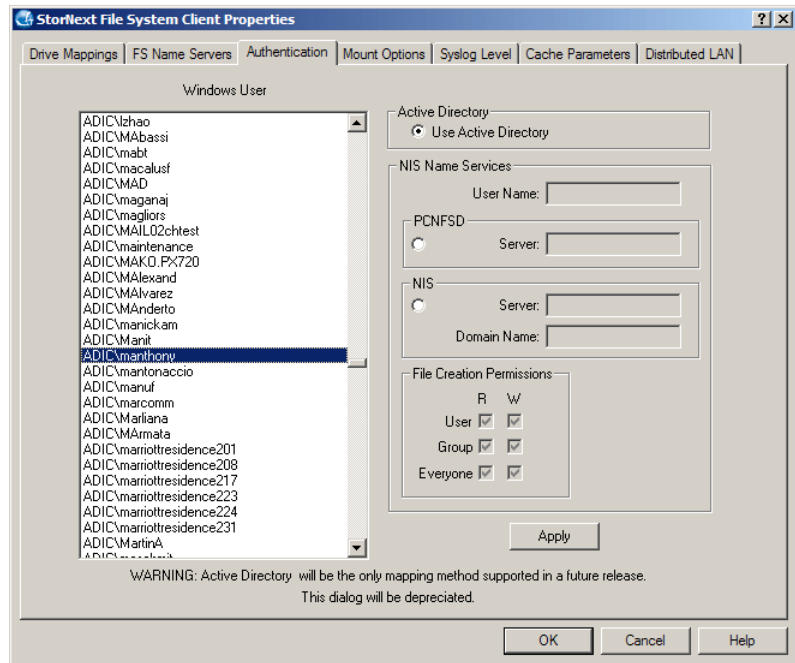


Table 16 Client Configuration:
Authentication

Field / Button	Description
Windows User	Select the Windows user to map to a user ID and group on the SAN.

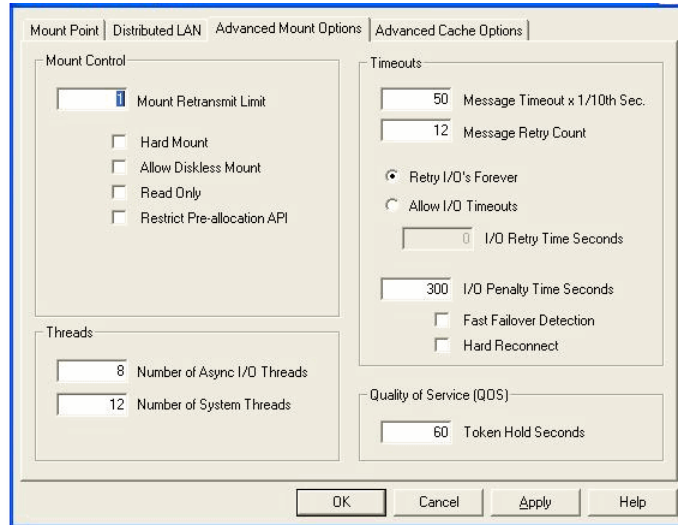
Field / Button	Description
Use Active Directory	Click to use LDAP to obtain the Active Directory/Services for UNIX (SFU) mapping for the selected user. (The client system must be part of an Active Directory domain.)
User Name	Type the user name that should be sent to the authentication server. (PCNFSD and NIS methods only.)
PCNFSD	Click to use a PCNFSD server for authentication.
PCNFSD - Server	Type the IP address of the PCNFSD server.
NIS	Click to use an NIS server for authentication.
NIS - Server	Type the name of the NIS server.
NIS - Domain Name	Type the domain name of the NIS server.
File Creation Permissions	Select the default UNIX permissions for new files created by the selected user. (PCNFSD and NIS methods only.)
Apply	Click to Apply changes. (You do not need to restart the client system.)

Mount Options

The **Mount Options** tab ([figure 40](#)) displays the mount options for the drive currently selected on the **Drive Mappings** tab.

Caution: Changing the values on the **Mount Options** tab can affect system performance and stability. Do not change mount options unless instructed to do so by the Quantum Technical Assistance Center.

Figure 40 Client Configuration:
Mount Options



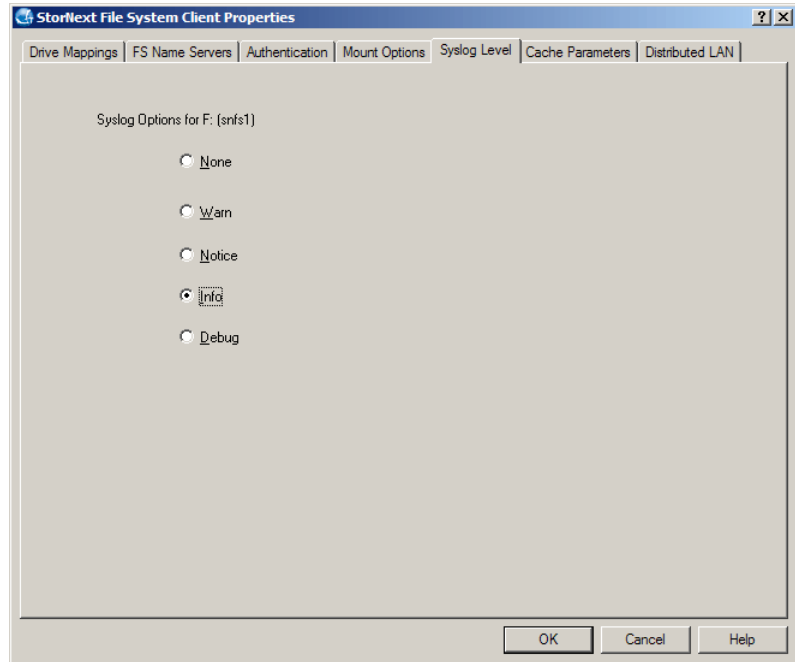
Note: Selecting the **Read Only** check box has no effect. This feature has been disabled.

Syslog Level

The system log level determines the types of messages the file system records in the system event log.

Use the **Syslog Level** tab ([figure 41](#)) to specify the system log level. The **None** level setting provides the least amount of logging and the **Debug** level provides the most. The default level is **Info**.

Figure 41 Client Configuration:
Syslog Level

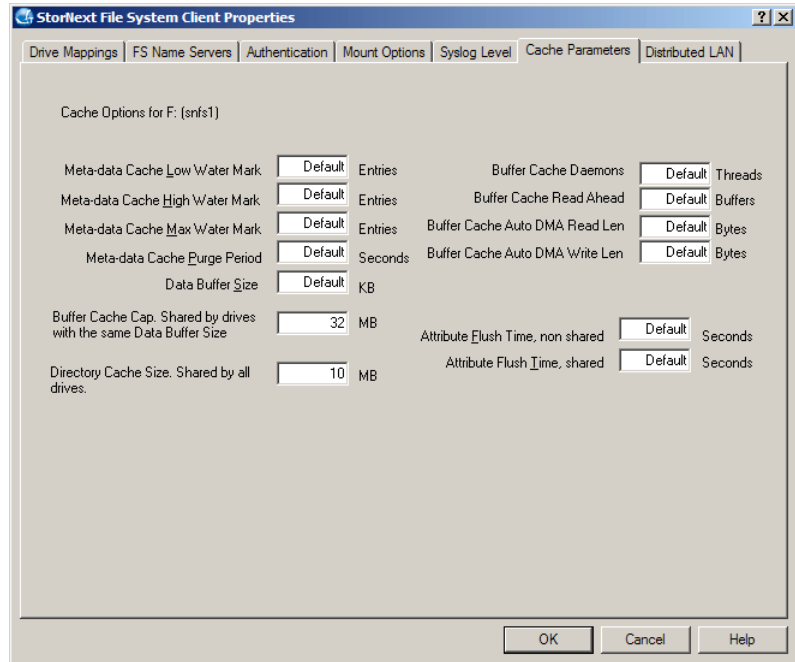


Cache Parameters

The **Cache Parameters** tab ([figure 42](#)) displays performance values that control how many file system lookup names are kept in memory.

Caution: Changing the values on the **Cache Parameters** tab can affect system performance and stability. Do not change cache parameters unless instructed to do so by the Quantum Technical Assistance Center.

Figure 42 Client Configuration:
Cache Parameters



Distributed LAN

A StorNext client running on Windows can be configured as a distributed LAN client or a distributed LAN server. (This is a licensed feature.)

- **Distributed LAN Server:** A distributed LAN server has direct access to data disks (using fibre channel) and makes the shared storage pool available to distributed LAN clients over a network.
- **Distributed LAN Client:** A distributed LAN client does not have direct access to data disks and instead accesses the shared storage pool by connecting to a distributed LAN server over a network. (Distributed LAN clients have full StorNext client functionality.)

Note: A StorNext client configured as a distributed LAN server requires a dedicated system. Do not run other applications or services on a system configured as a distributed LAN server.

Use the **Distributed LAN** tab (figure 43) to configure a distributed LAN server or a distributed LAN client. Table 17 describes the fields on the **Distributed LAN** tab.

Figure 43 Client Configuration:
Distributed LAN

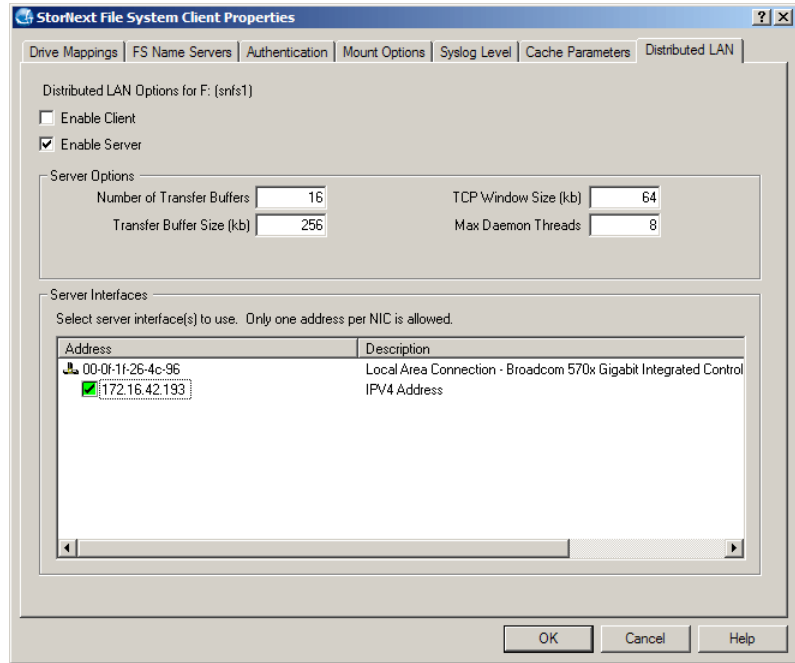


Table 17 Client Configuration:
Distributed LAN

Field / Button	Description
Enable Client	Select to configure the StorNext client as a distributed LAN client. The StorNext client will connect to all available distributed LAN servers. (If you select this check box, all other fields on the tab become unavailable.)
Enable Server	Select to configure the StorNext client as a distributed LAN server. The StorNext client will make the disks for this file system available to distributed LAN clients over the specified LAN.

Field / Button	Description
Number of Transfer Buffers	Type the number of transfer buffers used by the distributed LAN server. (Default: 16)
Transfer Buffer Size (kb)	Type the transfer buffer size (in KB) used by the distributed LAN server. A larger buffer may increase performance for larger files. (Default: 256)
TCP Window Size (kb)	Type the TCP window size (in KB) used by the distributed LAN server. (Default: 64)
Max Daemon Threads	Type the maximum number of daemon threads used by the distributed LAN server. (Default: 8)
Server Interfaces	Select the server interface (network interface card) to use when connecting to distributed LAN clients. If a network interface has more than one address configured, you must select one of the addresses to use for distributed LAN connections. (For best performance, do not choose the network used for metadata.)

Disk Device Labeler

The Disk Device Labeler utility lets you configure StorNext File System storage area network (SAN) disks. Use the Disk Device Labeler to create a list of disk labels, associated device names, and (optional) the sectors to use.

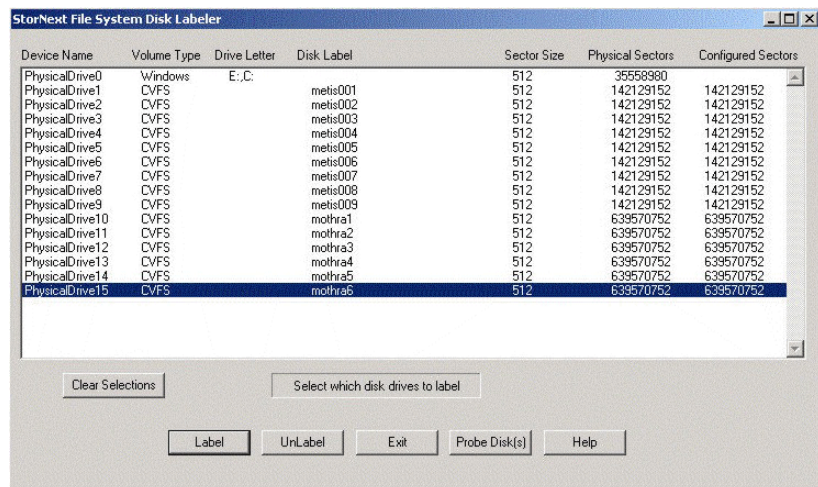
Note: Run the Disk Device Labeler on a system that has visibility to all disk devices on the SAN.

The file system uses the volume labels to determine which disk drives to use. The label name written to a disk device must match the disk name specified in the Server Configuration utility. For more information, see [Server Configuration](#) on page 97.

Caution: Modifying the label of a system disk may render the system inoperable and require you to repair the volume. Only label disk devices that are intended for use with the StorNext File System SAN.

To run the Disk Device Labeler utility, on the Windows **Start** menu, click **All Programs > StorNext File System > Disk Device Labeler**. The **Disk Labeler** window ([figure 44](#)) appears.

Figure 44 Disk Device Labeler



On the **Disk Labeler** window, do one of the following:

- Click **Label** to write a volume label to the selected device(s) (see [Labeling Disks](#) below).
- Click **UnLabel** to remove the existing volume label from the selected device(s).
- Click **Exit** to quit the Disk Device Labeler utility.
- Click **Probe Disk(s)** to pulse the activity light of the selected device(s). Use this feature to correctly identify disks before labeling them.
- Click **Clear Selections** to deselect all devices in the list.

Labeling Disks

When you select one or more disks and click **Label**, a confirmation screen appears asking if you are sure you want to proceed. Click **OK** to continue. The **Disk Labeler** dialog box appears (figure 45). Table 18 describes the fields on the on the **Disk Labeler** dialog box.

Figure 45 Disk Labeler Dialog Box

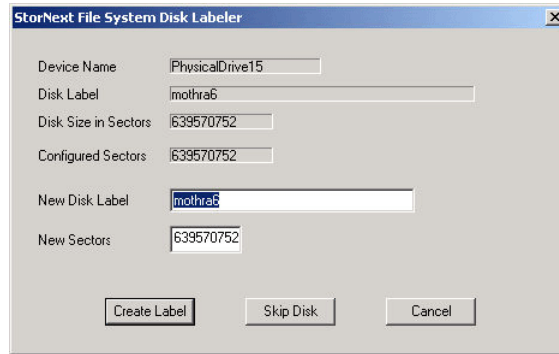


Table 18 Disk Labeler Dialog Box

Field / Button	Description
New Disk Label	Type the label for the disk.
New Sectors	(Optional) Type the number of sectors on the disk.
Create Label	Write the new label to the disk and proceed to the next selected disk.
Skip Disk	Do not write a label to the disk and proceed to the next selected disk.
Cancel	Close the Disk Labeler dialog box.

License Identifier

Use the License Identifier utility to display the host license identifier. The host license identifier is required to obtain a permanent license for StorNext.

To run the License Identifier utility, on the Windows **Start** menu, click **All Programs > StorNext File System > License Identifier**. A dialog box displays the host license identifier. Record this information.

To obtain a license, use the Configuration Wizard. For more information, see [Using the Configuration Wizard](#) on page 63. Alternately, you can manually copy a license file to the StorNext Configuration directory.

To obtain a permanent license, contact the Quantum Technical Assistance center at licenses@quantum.com and provide the following information:

- The product serial number from the StorNext box or CD.
- The number of client machines connecting to the MDC.
- The host license identifier you recorded.

A Quantum support representative will send you a **license.dat** file. Copy the file to the **C:\Program Files\StorNext\config** directory. (If there is a temporary license file, overwrite the file.)

Simple File System Configuration

The Simple File System Configuration utility can be used instead of the [Server Configuration](#) utility to configure a basic StorNext file system with a single stripe group.

Note: Before configuring a file system, you should label disk devices. For more information, see [Disk Device Labeler](#) on page 83.

To run the Simple File System Configuration utility, on the Windows **Start** menu, click **All Programs > StorNext File System > Simple File System Configuration**. The **Simple Configuration Setup** window appears ([figure 46](#)). [Table 19](#) describes the fields on the **Simple Configuration Setup** window.

To configure a simple file system, select the disks to use in the configuration. Specify settings (file system name, block size, stripe size, and maximum connections), and then click **Configure**.

Figure 46 Simple File System Configuration

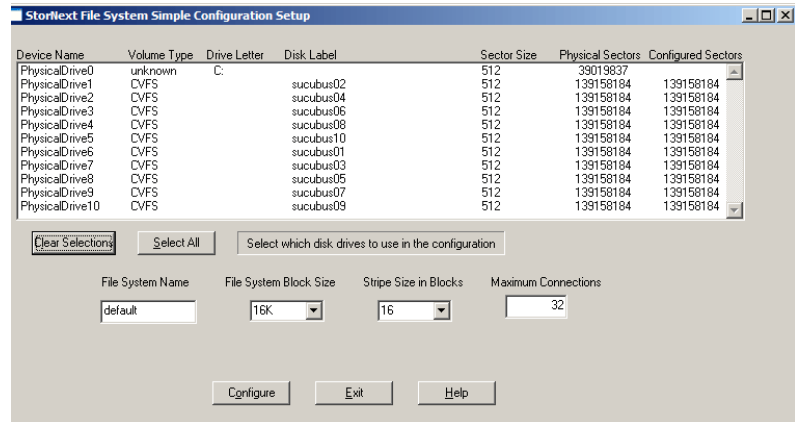


Table 19 Simple File System Configuration

Field / Button	Description
Clear Selections	Click to deselect all devices in the list.
Select All	Click to select all devices in the list.
File System Name	Type the name of the file system. This is the name used by clients when establishing a mount point for the file system.
File System Block Size	Select the file system block size (in bytes). This is the minimum allocation size used by the file system.
Stripe Size in Blocks	Select the stripe size (in blocks). This is the number of file system blocks to write before switching to the next disk in the stripe group.
Maximum Connections	Type the maximum number of clients that can simultaneously mount the file system. (This value may be overridden by values in your product license code.)
Configure	Click to save the configuration using the current settings. The configuration file is saved in the StorNext configuration directory.
Exit	Click to quit the Simple File System Configuration utility.

Start File System Services

The Start File System Services utility starts all StorNext services on an MDC or StorNext client.

The StorNext services must be running on the MDC for file systems to be active and available. In addition, the StorNext services must be running to use the StorNext configuration utilities and to mount file systems using the client software.

To start StorNext File System services, on the Windows **Start** menu, click **All Programs > StorNext File System > Start File System Services**.

Stop and Remove File System Services

The Stop and Remove File System Services utility stops all StorNext services on an MDC or StorNext client, and also removes registry entries that automatically start the services on bootup.

To stop and remove StorNext File System services, on the Windows **Start** menu, click **All Programs > StorNext File System > Stop and Remove File System Services**.

To start the StorNext services again, you must use the Start File System Services utility. Rebooting the system will not restart services. For more information, see [Start File System Services](#).

Stop File System Services

The Stop File System Services utility stops all StorNext services on an MDC or StorNext client.

To stop StorNext File System services, on the Windows **Start** menu, click **All Programs > StorNext File System > Stop System Services**.

To start the StorNext services again, reboot the system or use the Start File System Services utility. For more information, see [Start File System Services](#).

Version Information

The Version Information utility displays information about the currently installed version of the StorNext server and/or client software, such as the version number, build number, and platform.

To run the Version Information utility, on the Windows **Start** menu, click **All Programs > StorNext File System > Version Information**. A dialog box displays version information for the StorNext server and/or client software installed on your system.

Check (Read-Only) a File System

The Check (Read-Only) a File System utility allows you to check a StorNext file system for metadata corruption (due to a system crash, bad disk, or other failure). Run the utility on an MDC that contains the file system you want to check.

To check a file system, on the Windows **Start** menu, click **All Programs > StorNext File System > Check (Read-Only) a File System**. Type the number that corresponds to the file system you want to check, and then press **<Enter>**.

Because the file system check is run in read-only mode, any problems that exist are not repaired. If the utility identifies errors or corruption in metadata, you must repair the file system (see [Repair a File System](#) on page 91).

File System Startup List

The File System Startup List utility lets you modify the File System Manager (FSM) services list and set file system priority.

The File System Manager is a process that manages the name space, allocations, and metadata coherency for a file system. Each file system uses its own FSM process. When there are multiple file systems (and therefore multiple FSM processes), the FSM services list controls which FSM processes are run when the server starts up, and also sets the priority for each file system (for failover configurations).

To run the File System Startup List utility, on the Windows **Start** menu, click **All Programs > StorNext File System > File System Startup List**. The **FSM Services List** window appears ([figure 47](#)). [Table 20](#) describes the fields on the **FSM Services List** window.

Figure 47 File System Startup List

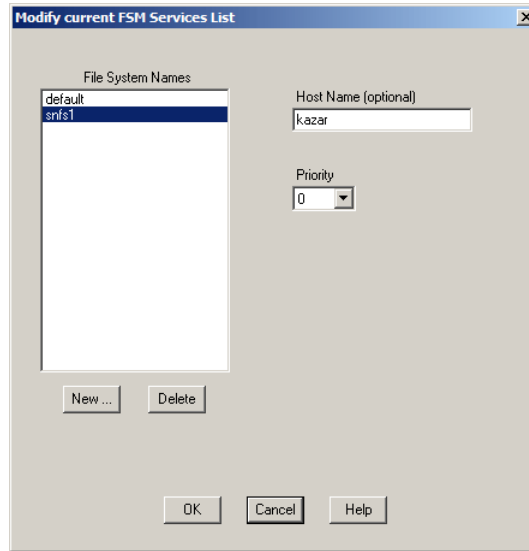


Table 20 File System Startup List

Field / Button	Description
New	Click to add a file system to the FSM services list. Type the name of the file system and click OK .
Delete	Click to remove the selected file system from the FSM services list.
Host Name	(Optional) Type the name of the host on which the file system is running.
Priority	(Optional) Select the priority for the selected file system. This priority is used for failover configurations. 0 is highest priority and 9 is lowest priority.
OK	Click to save changes to the FSM services list.
Cancel	Click to quit the File System Startup List utility without saving changes.

Re-initialize a File System

The Re-initialize a File System utility allows you to initialize an existing file system. Initializing a file system prepares it for use.

Caution: Re-initializing a file system will destroy all data on the file system.

To initialize a file system, on the Windows **Start** menu, click **All Programs > StorNext File System > Re-initialize a File System**. Type the number that corresponds to the file system you want to re-initialize, and then press **<Enter>**.

Repair a File System

The Repair a File System utility lets you repair corrupted metadata on a file system. Repair a file system if errors were identified when checking the file system (see [Check \(Read-Only\) a File System](#) on page 89).

The file system must be inactive in order to be repaired. To stop a file system, use the Server Administration utility (see [Server Administration](#)).

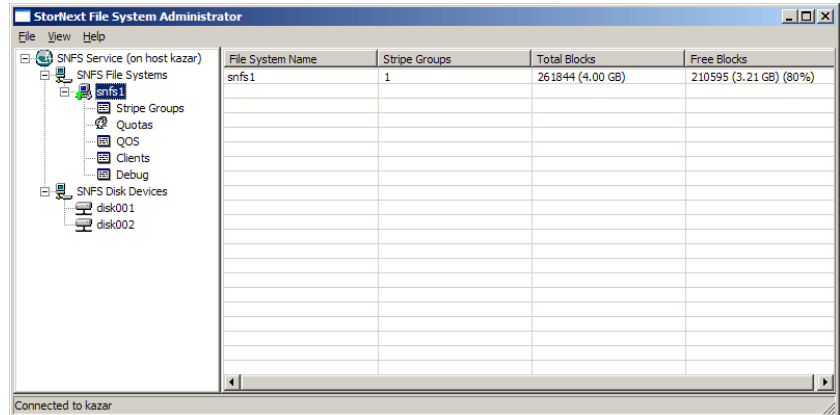
To repair a file system, on the Windows **Start** menu, click **All Programs > StorNext File System > Repair a File System**. Type the number that corresponds to the file system you want to repair, and then press **<Enter>**.

Server Administration

The Server Administration utility lets you view and modify stripe group properties and set quotas. A stripe group is a logical storage unit made up of one or more disks. A quota is a space limit that is set for specified users or groups.

To run the Server Administration utility, on the Windows **Start** menu, click **All Programs > StorNext File System > Server Administration**. The **Administrator** window appears ([figure 48](#)). The left pane shows file systems running on the currently connected MDC. Expand a file system to see stripe groups, quotas, and other properties.

Figure 48 Server Administration



On the **Administrator** window, do one of the following:

- To connect to an MDC, click **File > Connect to**. Type the host name and click **OK**. File systems on the server appear in the left pane.
- To start a file system, click it in the left pane. Click **File > Start File System**, and then click **Start**.
- To activate a file system, click it in the left pane. Click **File > Activate File System**, and then click **Activate**.
- To stop a file system, click it in the left pane. Click **File > Stop File System**, and then click **Stop**.
- To update the list of file systems in the left pane, click **View > Refresh**.

For more information about viewing and modifying file system properties and quotas, see the following sections:

- [File System Properties](#) on page 93
- [Stripe Group Properties](#) on page 94
- [Quota Properties](#) on page 95
- [Quality of Service Information](#) on page 97
- [Clients Information](#) on page 97

Note: Do not change settings on the **Debug Settings** dialog box unless directed to do so by the Quantum Technical Assistance Center.

File System Properties

To view or change file system properties, click a file system in the left pane, and then click the file system name in the right pane. The **File System Properties** dialog box appears (figure 49). Table 21 describes the fields on the **File System Properties** dialog box.

After making changes, click **OK**. (Not all fields can be modified on this dialog box.)

Figure 49 Server Administration: File System Properties

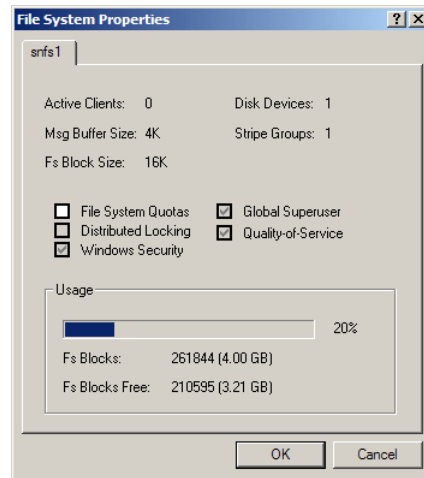


Table 21 Server Administration: File System Properties

Field / Button	Description
Active Clients	The number of active clients on the file system.
Msg Buffer Size	The size of the message buffer.
Fs Block Size	The file system block size.
Disk Devices	The number of disk devices in the file system.
Stripe Groups	The number of stripe groups in the file system.
File System Quotas	Select to enable file system quotas.

Field / Button	Description
Distributed Locking	Indicates if distributed locking is enabled or disabled.
Windows Security	Indicates if Windows security is enabled or disabled.
Global Superuser	Indicates if the global superuser is enabled or disabled.
Quality-of-Service	Indicates if Quality of Service is enabled or disabled.
Usage	Displays the amount of used and free storage space in the file system.

Stripe Group Properties

To view or change stripe group properties, expand a file system in the left pane, click **Stripe Groups**, and then click the stripe group name in the right pane. The **Stripe Group Properties** dialog box appears ([figure 50](#)). [Table 22](#) describes the fields on the **Stripe Group Properties** dialog box.

After making changes, click **OK**. (Not all fields can be modified on this dialog box.)

Figure 50 Server Administration: Stripe Group Properties

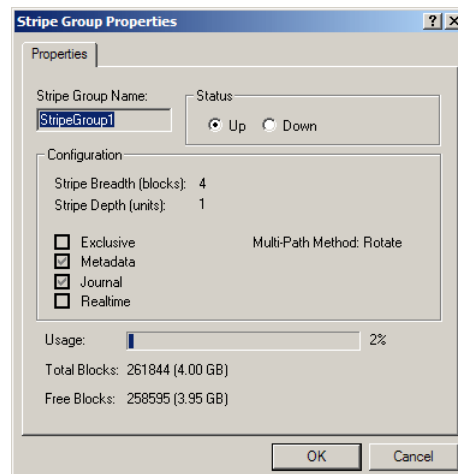


Table 22 Server
Administration: Stripe Group
Properties

Field / Button	Description
Stripe Group Name	The name of the stripe group.
Status	Shows the current status of the stripe group. Click Up to make the stripe group active or click Down to make the strip group inactive.
Stripe Breadth	The number of file system blocks to write before switching to the next disk in the stripe group.
Stripe Depth	The number of disks in the stripe group.
Exclusive	Indicates if only specified file types (associated with the stripe group affinities) can be stored on the stripe group.
Metadata	Indicates if file system metadata can be stored on the stripe group.
Journal	Indicates if the file system logging journal can be stored on the stripe group.
Realtime	(no longer supported)
Multi-Path Method	Indicates the method the file system uses to access the disk: round, static, or sticky.
Usage	Displays the amount of used and free storage space in the stripe group.

Quota Properties

Quotas define the amount of storage space a specified user or group is allowed to own. You can set hard or soft quota limits.

To view or change quota properties, expand a file system in the left pane, and then click **Quotas**. The **Quota Properties** dialog box appears ([figure 51](#)). There are two tabs:

- Set quotas for users on the **User Quotas** tab.
- Set quotas for groups on the **Group Quotas** tab.

[Table 23](#) describes the fields on the **User Quotas** and **Group Quotas** tabs. After making changes, click **OK**. (Not all fields can be modified on this dialog box.)

Figure 51 Server Administration: Quota Properties

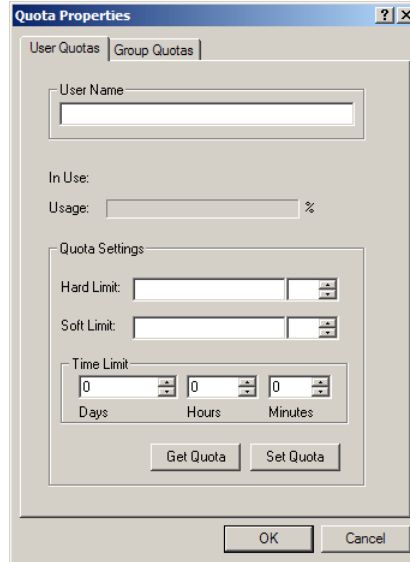


Table 23 Server Administration: Quota Properties

Field / Button	Description
User Name / Group Name	Type the name of the user or group to set a quota for.
Usage	Displays the percentage of the quota that has been used.
Hard Limit	Specify an amount in B, KB, MB, GB, or TB, or EB. This is the maximum amount of space the specified user or group can use.
Soft Limit	Specify an amount in B, KB, MB, GB, or TB, or EB. Once the user or group uses this amount of space, a warning is sent. (Typically this is 80% of the hard limit.)

Field / Button	Description
Time Limit	Specify the amount of time it takes for the soft limit to turn into a hard limit.
Get Quota	Click to get quota settings for the specified user or group.
Set Quota	Click to set a quota for the specified user or group using the current settings.

Quality of Service Information

To view Quality of Service (QOS) information for a file system, expand a file system in the left pane, and then click **QOS**. Quality of Service information appears in the right pane, including stripe group, real-time limit, non-real-time reserve, committed RTIO, and the number of non-real-time clients.

Clients Information

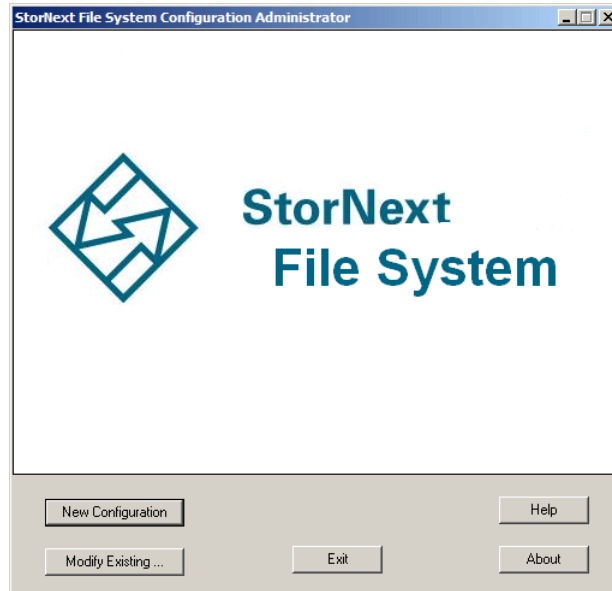
To view information about clients connected to the file system, expand a file system in the left pane, and then click **Clients**. Information about the currently connected clients appears in the right pane, including client ID, type, location, up time, and when the client license expires.

Server Configuration

The Server Configuration utility lets you view and modify properties for an MDC. Use this utility to create a new server configuration or modify an existing configuration.

To run the Server Configuration utility, on the Windows **Start** menu, click **All Programs > StorNext File System > Server Configuration**. The **Configuration Administrator** window appears ([figure 52](#)).

Figure 52 Configuration Administrator



On the **Configuration Administrator** window, do one of the following:

- Click **New** to create a new configuration file.
- Click **Modify** to edit an existing configuration file. Browse for the configuration (*.cfg) file and click **Open**.
- Click **Exit** to close the Configuration Administrator window.

When you create a new configuration file or open an existing configuration file for editing, the StorNext File System Configuration window appears. This window includes four tabs:

- [Global Settings](#) on page 99
- [Disk Types](#) on page 101
- [Disk Definitions](#) on page 103
- [Stripe Groups](#) on page 105

Click a tab to view or modify StorNext File System properties. After making changes on one or more tabs, click **OK** to save the changes. Specify a name and a location for the *.cfg file, and then click **Save**.

Note: Before configuring a file system, you should label disk devices. For more information, see [Disk Device Labeler](#) on page 83.

Global Settings

Use the **Global Settings** tab ([figure 53](#)) to specify general file system properties. [Table 24](#) describes the fields on the **Global Settings** tab.

Figure 53 Server Configuration: Global Settings

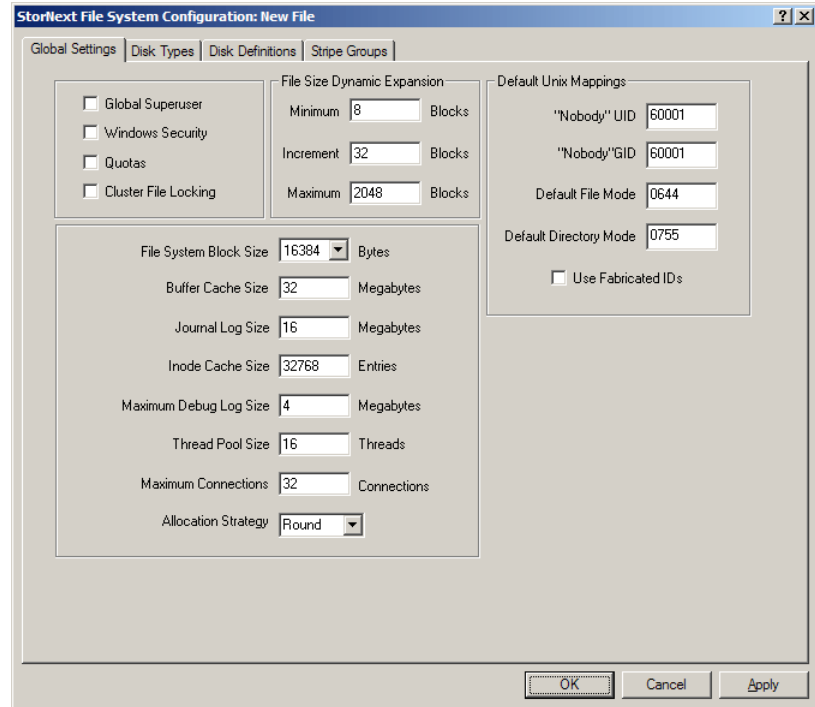


Table 24 Server Configuration: Global Settings

Field / Button	Description
Global Superuser	(Optional) Select to allow a user with superuser privileges to have global access rights on the file system.
Windows Security	(Optional) Select to use Windows Security Reference Monitor (ACLs) on Windows clients.

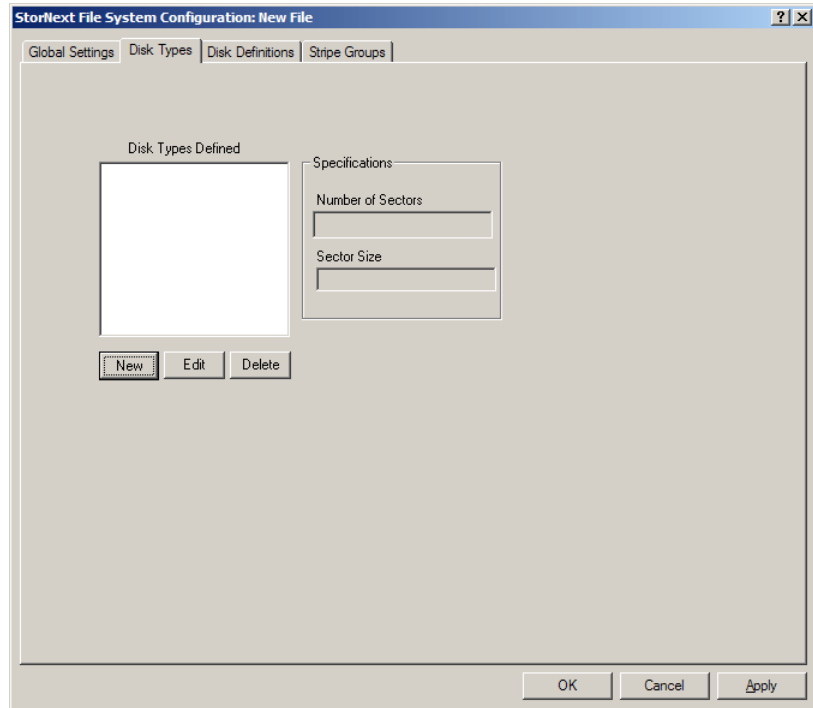
Field / Button	Description
Quotas	(Optional) Select to enforce file system quotas and track storage usage for individual users and groups.
Cluster File Locking	(Optional) Select to send a warning when a user attempts to access a file that is locked or already in use.
File Size Dynamic Expansion - Minimum	Type the minimum number (in blocks) to allocate when a file is created.
File Size Dynamic Expansion - Increment	Type the initial increment (in blocks) by which a file is expanded.
File Size Dynamic Expansion - Maximum	Type the maximum increment (in blocks) by which a file is expanded.
File System Block Size	Select the file system block size (in bytes).
Buffer Cache Size	Type the amount of memory (in MB) used for general metadata information caching.
Journal Log Size	Type the maximum size (in MB) for the journal log.
Inode Cache Size	Type the number of entries in the inode cache.
Maximum Debug Log Size	Type the maximum size (in MB) for the debug log.
Thread Pool Size	Type the number of threads the FSS uses when reading and storing files.
Maximum Connections	Type the maximum number of simultaneous connections (SNFS clients and Administrative Tap clients) allowed by the FSS.

Field / Button	Description
Allocation Strategy	Select the method of allocation for new disk blocks: <ul style="list-style-type: none"> • Round: Alternate between similar stripe groups. (Default) • Fill: Fill the first stripe group before using the second. • Balance: Use the stripe group with the most free space.
“Nobody” UID	Type the Windows user ID to use when no user ID can be found using Active Directory.
“Nobody” GID	Type the Windows group ID to use when no group ID can be found using Active Directory.
Default File Mode	Type the permission mode to use when creating files.
Default Directory Mode	Type the permission mode to use when creating directories.
Use Fabricated IDs	Select if the metadata controller is running on Apple MacOS X.

Disk Types

Use the Disk Types tab ([figure 54](#)) to define disk types used in the file system.

Figure 54 Server
Configuration: Disk Types



On the **Disk Types** tab, do one of the following:

- To add a new disk type, click **New**.
- To modify a disk type, select the disk type in the list and click **Edit**.
- To delete a disk type, select it in the list and click **Delete**.

When you add or modify a disk type, the **Enter New Disk Type** dialog box appears ([figure 55](#)). [Table 25](#) describes the fields on the **Enter New Disk Type** dialog box.

Note: The **Sector** and **Sector Size** fields are populated with values from the Disk Device Labeler utility. For more information, see [Disk Device Labeler](#) on page 83.

Figure 55 Server Configuration: Enter New Disk Type

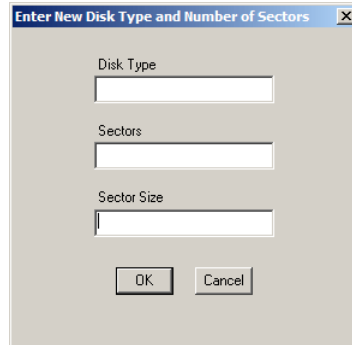


Table 25 Server Configuration: Enter New Disk Type

Field / Button	Description
Disk Type	Type a descriptive name for the disk.
Sectors	Type the number of physical sectors on the disk.
Sector Size	Type the size of sectors on the disk.
OK	Click to create the new disk type with the specified properties.
Cancel	Click to close the Enter New Disk Type dialog box without saving changes.

Disk Definitions

Use the **Disk Definitions** tab ([figure 56](#)) to create disk definitions and modify disk specifications. [Table 26](#) describes the fields on the **Disk Definitions** tab.

Figure 56 Server Configuration: Disk Definitions

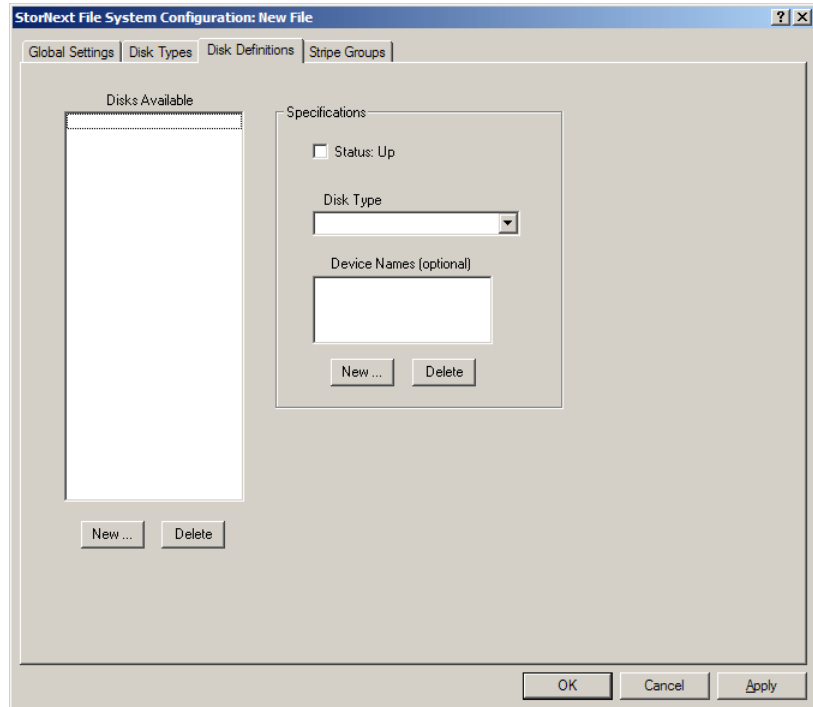


Table 26 Server Configuration: Disk Definitions

Field / Button	Description
Disks Available - New	Click to create a new disk definition. Type a name for the disk and click OK .
Disks Available - Delete	Click to delete the selected disk definition.
Status: Up	Select to enable the selected disk definition. When enabled, the defined disk is available to the configured file system for I/O.
Disk Type	Select a disk type for the selected disk definition. (Disk types are defined on the Disk Types tab.)
Device Names - New	Click to add a device name to the disk definition. Type a device name and click OK .

Field / Button	Description
Device Names - Delete	Click to delete the selected device name.

Stripe Groups

Use the Stripe Groups tab ([figure 57](#)) to define stripe groups. (A stripe group is a logical storage unit consisting of one or more disk drives.) [Table 27](#) describes the fields on the Stripe Groups tab.

Figure 57 Server Configuration: Stripe Groups

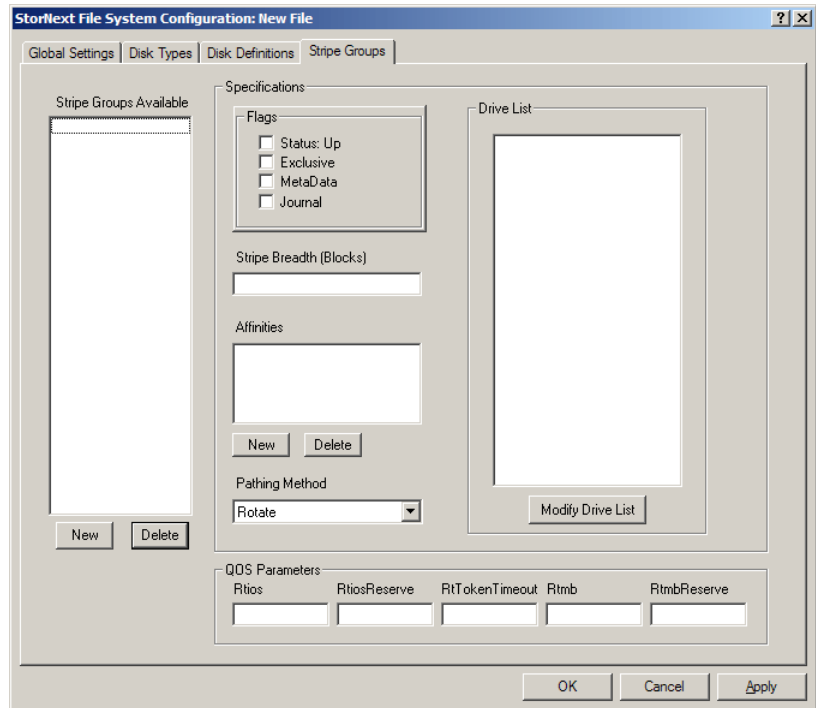
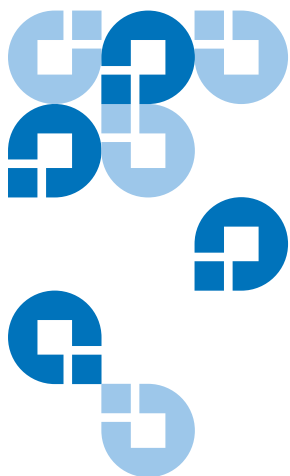


Table 27 Server Configuration:
Stripe Groups

Field / Button	Description
Stripe Groups Available - New	Click to create a new stripe group. Type a name for the stripe group and click OK .
Stripe Groups Available - Delete	Click to delete the selected stripe group.
Status: Up	Select to enable the selected stripe group. When enabled, the stripe group is available to the configured file system for I/O.
Exclusive	Select to allow only file types associated with the affinities specified under Affinities to be stored on the stripe group.
MetaData	Select to allow file system metadata to be stored on the stripe group.
Journal	Select to allow the file system logging journal to be stored on the stripe group.
Affinities - New	Click to add a new affinity to the stripe group. Type the name of the new affinity and click OK . (Affinity names cannot be longer than eight characters.)
Affinities - Delete	Click to the delete the selected affinity.
Pathing Method	Select a method for how the file system accesses the disk: <ul style="list-style-type: none"> • Rotate: Chooses an I/O path based on load. • Static: Always uses the same I/O path. • Sticky: Chooses an I/O path based on the identity of the target file.
Rtios	Type the number of disk I/O operations per second available to real-time applications using the Quality of Service (QOS) API.
RtiosReserve	Type the minimum number of disk I/O operations per second reserved for non-real-time applications.

Field / Button	Description
RtTokenTimeout	Type the number of seconds to wait for clients to respond to a token callback.
Rtmb	Type the number of MBs per second available to real-time applications using the Quality of Service (QOS) API.
RtmbReserve	Type the minimum number of MBs per second reserved for non-real-time applications.
Modify Drive List	Click to add or remove disks for the selected stripe group. Use the left and right arrows to add or remove disks in the Primary Disks list, and then click OK .

Caution: When adding a disk to an existing stripe group, make sure the disk is added to the bottom of the **Drive List**. If the disk is inserted in the middle of the list, the file system behaves as if files on the file system are corrupted.



Appendix A Uninstalling StorNext

If you no longer need to use StorNext, uninstall the software to remove it from your system. To uninstall StorNext, use the appropriate method for your operating system:

- [Uninstalling StorNext on Unix and Linux](#) on page 108
- [Uninstalling StorNext on Windows](#) on page 111

Uninstalling StorNext on Unix and Linux

To uninstall StorNext on a metadata controller (MDC), use the installation script (see [Uninstalling SNSM and SNFS](#) on page 109).

To uninstall the StorNext client software, use the appropriate method for your operating system (see [Uninstalling the StorNext Client Software](#) on page 110).

Uninstalling SNSM and SNFS

To uninstall StorNext File System and Storage Manager on an MDC running Unix or Linux, run the installation script with the `-remove` option. To launch the script, use the correct StorNext installation CD for your operating system.

- 1 Log on to the MDC as root.
- 2 Mount the StorNext installation CD and change to the CD root directory.

Note: When you mount a CD in a Red hat 4 or 5 system, CDs are mounted by default with a `noexec` (non-executable) option which prevents you from proceeding with the installation.

For Red Hat users only, before proceeding you must remount the CD by typing `mount -o remount, exec ...`

- 3 List the installation directories on the CD. At the command prompt, type:
`ls -l`
- 4 Identify the correct installation directory for your operating system and hardware platform, and then change to that directory.

For example, for Red Hat Linux 4 running on an x86 64-bit platform, change to the **RedHat40AS_26x86_64** directory.
- 5 Do one of the following:
 - To uninstall StorNext Storage Manager and File System, at the command prompt, type:
`./install.stornext -remove`
 - To uninstall StorNext File System, at the command prompt, type:
`./install.snfs -remove`

The installation script runs ([figure 58](#)).

Figure 58 StorNext Remove
Main Menu

```
Stornext Remove 3.1.3 (5)  MAIN MENU
1) Installation Configuration
2) Remove stornext
3) Show Status
4) Quit
Enter your choice <2>:
```

- 6 Type 2 and press **<Enter>**.
- 7 After the uninstall process is complete, type 4 and press **<Enter>** to exit the installation script.

Uninstalling the StorNext Client Software

To uninstall the StorNext client software, unmount all file systems and stop StorNext software. Then remove the client software package using the appropriate command for your operating system.

Note: This procedure removes the client software only. To uninstall StorNext File System and Storage Manager, see [Uninstalling SNSM and SNFS](#) on page 109.

- 1 Unmount all file systems. To unmount a file system, at the command prompt, type:
`umount <mount point>`
where *<mount point>* is the location where the file system is mounted.
- 2 Stop the StorNext client software. At the command prompt, type:
`/etc/init.d/cvfs fullstop`
- 3 Remove the StorNext software package using the correct commands for your operating system.
 - Linux:
`rpm -e <package name>`
where *<package name>* is the name of the client software package that was installed.
 - Solaris:
`pkgrm ADICsnfs`
 - HP-UX:

```
swremove -x mount_all_filesystems=false snfsclient
```

- IBM AIX:

```
installp -u <package name>
```

where <package name> is the name of the client software package that was installed.

- SGI IRIX:

```
Inst
```

```
remove cv_base
```

```
remove cv_clnt
```

```
go
```

Note: If you do not know the package name, you can download the client software for your operating system and check the package name (see [Downloading the StorNext Client Software](#) on page 39).

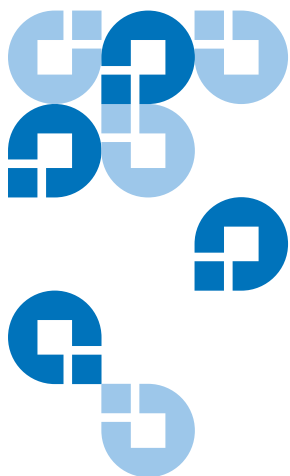
Uninstalling StorNext on Windows

To uninstall StorNext (server or client) on a Windows system, use the Add or Remove Programs control panel.

- 1 Open the Windows Control Panel, and then double-click **Add or Remove Programs**.

The **Add or Remove Programs** window appears.

- 2 In the list of currently installed programs, click **StorNext File System**, and then click **Remove**.
- 3 Click **Yes** to confirm the removal.
- 4 After the uninstall process is complete, reboot the system.



StorNext Administration Tasks

Use the following information to perform specific file system configuration tasks that do not apply to a typical StorNext set up.

Sharing a Library Between Applications

If two or more software applications (on one or multiple machines), are configured to use the same library, then you must use the following procedure to enable the library to be shared and to prevent media being overwritten when these applications are used. This task must be performed when the Configuration Wizard (CW) is run during initial StorNext setup and configuration. For more information on using the CW, refer to the StorNext Installation Guide.

Note: For library sharing to be effective, the steps in the following procedure must be performed in the order in which they are presented.

You must have root privileges to perform this task.

- 1 When you match hardware devices to their correct slots on the **Matched Devices With Slots** screen (you will see this screen during the execution of Step 4 of the Configuration Wizard, **Add Tape Drive**), only configure the tape drives that your software application will use. You do not need to configure all tape drives listed as part of the library.
- 2 Once the tape drives are added and configured in Step 4 of the CW (**Add Tape Drive**), but before continuing to Step 5 of the CW (**Add Media**), go to a metadata controller and perform these steps:
 - a Change directory to the **config** directory. Type:

```
cd /usr/adic/MSM/internal/config
```
 - b List all files in the config directory. Type:

```
ls -l
```
 - c Using a text editor, edit the **media_file_<library_name>** file. For example:

```
vi media_file_<library_name>
```

The **media_file** contains a filter for barcode labels that are read by StorNext. This action is performed by using regular expressions. (A regular expression provides a mechanism to select strings from a set of character strings. In the above example, the character strings refer to the barcode labels.) In the example above, *<library_name>* is the library that was configured in Step 3, **Add Library**, of the CW.
 - d Set up the pattern matching of the media file.

Multiple entries may exist in the media file. Read the examples in the file to learn how to set up pattern matching.

These are examples of pattern matching:

```
scsi_archive 1111.. (brings in all media with the 1111 prefix)
```

```
scsi_archive AB9... (brings in all six-character media labels with the AB9 prefix)
```

```
scsi_archive CLN1.. (brings in all media that have the CLN1 prefix)
```
- 3 Continue to the **Add Media section of the Configuration Wizard**.

Manually Modifying Storage Manager Configuration

StorNext employs global parameters that define the Storage Manager configuration. Although the default values in these files are sufficient for most installations, you can edit the files to customize the StorNext software for your specific installation. This section provides a procedure that can be used to modify the following StorNext configuration files:

- `/usr/adic/TSM/config/fs_sysparm_override`
- `/usr/adic/TSM/config/filesize.config`
- `/usr/adic/TSM/logs/log_params`

fs_sysparm_override Configuration File

The `fs_sysparm_override` configuration file is used to tune items related to system administration, drives and media, media manager interface, and other miscellaneous items. For more information about the parameters that can be placed into the `fs_sysparm_override` configuration file, refer to the `fs_sysparm.README` file.

Caution: Incorrect modification of the `fs_sysparm_override` configuration file can cause a serious, adverse effect on StorNext functionality. Before modifying this file, Quantum recommends that you contact Quantum Global Services.

Caution: If you have files larger than 100GB and are using LTO2 media, the `MED_SEG_OVER_LTO` parameter may be modified to a value less than or equal to 190G to reduce file fragmentation. This has the adverse effect of reducing the potential for parallel I/O for multiple file segments. Setting the `MED_SEG_OVER_LTO` parameter to a value larger than 190GB may result in allocation failures that prevent file movement to tape.

filesize.config Configuration File

The **filesize.config** configuration file is used to control the file steering feature and has these characteristics:

- Allows the placement of files on different media types, based on the size of the files
- Specifies which drive pool a policy class should use when storing data
- Contains specific syntax and usage information
- Enables the system administrator to make changes without recycling the Tertiary Manager software

log_params Configuration File

The **log_params** configuration file is used to control various levels of trace logging. The file specifies each log level and how to enable and/or disable it.

Use the following procedure to modify the **fs_sysparm_override**, **filesize.config**, or **log_params** configuration files.

- 1 Use a text editor to open one of the following configuration files:
 - **/usr/adic/TSM/config/fs_sysparm_override**
 - **/usr/adic/TSM/config/filesize.config**
 - **/usr/adic/TSM/logs/log_params**
- 2 Locate the parameter you want to modify and replace the setting with a new, valid value.

When editing a file, be sure to follow the format used by entries in the file. For example, in the **fs_sysparm_override** and **filesize.config** files, all entries must be in the format: **name=value;**

- 3 Recycle the Tertiary Manager software.
 - a Stop the software by typing **TSM_control stop**
 - b Restart the software by typing **TSM_control start**

Connecting to a StorNext Network Using Xsan 1.4.2

If you are using Apple Xsan 1.4.2, follow the procedure below to connect to a StorNext network. The procedure consists of mounting the StorNext file system onto the OSx computer, and then creating an automount.plist to enable mounting the StorNext file system whenever the Macintosh is rebooted.

Do not use the procedure if you are using Xsan2, which has a slightly different procedure described in [Connecting to a StorNext Network Using Xsan 2](#) on page 119.

Mounting SNFS on the OSx Computer

Follow this procedure to mount the StorNext file system.

- 1 Connect the Apple computer to the SAN's metadata Ethernet and Fibre Channel networks.
- 2 Install Xsan 1.4.2 software on the Apple computer.
- 3 After Xsan 1.4.2 is installed, follow these steps to configure the software:
 - a On the Apple client, open **Xsan Admin**, which is located under the **Finder > Applications > Server** folder, and then connect to the Apple computer.
 - b Select the SAN in the **SAN Components** list.
 - c Click **Setup**, and then click **Computers**.
 - d Double-click the client in the list (located in the center of the window).
 - e Enter the Xsan serial number (printed on a sticker on the Xsan Installation disc sleeve).
 - f Click **Save**, and then quit Xsan Admin.
- 4 Navigate to an existing StorNext client on the SAN and print a copy of its `fsnameservers` file.

On Unix: the `fsnameservers` file is located at `/usr/cvfs/config/`.

On Windows: the `fsnamerservers` file is located at `%cvfsroot%\config\` (where `%cvfsroot%` is the directory where the StorNext software is installed). This directory is usually located in `C:\Program Files\Stornext\config\`.

- 5 Create a new plaintext file called `fsnameservers` in the `/Library/FileSystems/Xsan/config/` directory. Populate the file with the content of the StorNext file you printed in the previous step.

Note: If the content of the `fsnameservers` file specifies the metadata controller by its fully qualified domain name (FQDN), you must convert this to the metadata controller's IP address by using the command `host <FQDN>`

- 6 Type the command `sudo rm /Library/Filesystems/Xsan/config/.auth_secret` to remove the `.auth_secret` file from the Macintosh OS X client.

Caution: If you do not remove the `.auth_secret` file from the Macintosh OS X client, the metadata controller server and the client will be unable to communicate and FSMPM could fail.

- 7 Restart the Macintosh OS X system by typing on the terminal `sudo reboot`. Alternatively, you can restart by selecting **Restart** in the Apple menu.
- 8 Verify that the file system has started by typing in the terminal `/Library/FileSystems/Xsan/bin/cvadmin`. You should see a list of file systems that contain the StorNext filesystem. If the file system does not appear in the list, repeat step 3.
- 9 Create a mount point for the file system by creating a new folder at `/Volumes` where the file system will be mounted. The name of this directory should be the name of the file system. In the terminal type the following commands:

```
mkdir -p /Volumes/file_system_name  
chmod -R 777 /Volumes/file_system_name
```
- 10 Mount the StorNext FS file system to the mount point by typing the following command in the terminal:

`sudo mount -t acfs fsname /Volumes/fsname` (where `<fsname>` is the name of the file system). The SNFS filesystem should now be mounted on the OS X computer.

Creating the automount.plist File

In order to mount the StorNext file system whenever the Macintosh client is rebooted, configure the `automount.plist` file. Xsan 1.4.2 uses the `automount.plist` file to mount SAN volumes.

- 1 Use the command `vi /Library/Filesystems/Xsan/config/automount.plist` to create the `automount.plist` file.
- 2 Copy and paste the text from the `automount.plist` template below into the file you just created.
- 3 Change `Volume_name` to the name of your mounted file system.

The automount.plist Template

Copy and paste the text from the following template into the `automount.plist` file as described in step 2 above.

```
<?xml version="1.0" encoding="UTF-8"?>
<!DOCTYPE plist PUBLIC "-//Apple Computer/DTD PLIST 1.0//EN"
"http://www.apple.com/DTDs/PropertyList-1.0.dtd">
<plist version="1.0"?>
<dict>
<key>Volume_name</key>
<dict>
<key>AutoMount</key>
<string>rw</string>
<key>MountOptions</key>
<dict/>
</dict>
<key>Another_volume_name</key>
<dict>
<key>AutoMount</key>
<string>rw</string>
<key>MountOptions</key>
<dict/>
</dict>
</dict>
</plist>
```

Connecting to a StorNext Network Using Xsan 2

If you are using Apple Xsan 2.2 or earlier, follow the procedure below to connect to a StorNext network. The procedure consists of mounting the StorNext file system onto the Mac OS X computer, and then creating an automount.plist to enable mounting the StorNext file system whenever the Macintosh is rebooted.

Do not use the procedure if you are using Xsan 1.4.2, which has a slightly different procedure described in [Connecting to a StorNext Network Using Xsan 1.4.2](#) on page 116.

Mounting SNFS on the Mac OS X Computer

Follow this procedure to mount the StorNext file system.

- 1 Connect the Apple computer to the SAN's metadata Ethernet and Fibre Channel networks.
- 2 Install Xsan 2 software on the Apple computer. (Xsan 2.1.1 is supported only by the Leopard operating system. Snow Leopard operating systems require Xsan 2.2.)
- 3 Create the file `/etc/systemserialnumbers/xsan` using that Macintosh's Xsan serial number.

You must create the directory `/etc/systemserialnumbers` if it doesn't already exist. The format of the serial number file is a two-line file:

```
XSAN-020-XXX-XXX-X-XXX-XXX-XXX-XXX-XXX-XXX-X  
registered to|organization
```

Note: The file does not have a trailing return on the last line. Use the following:
`cat > /etc/systemserialnumbers/xsan` and end with `^D^D` (where `^D^D` is control-D control-D)

If you are unable to browse to the `systemserialnumbers` directory, use the `cat` or `echo` commands to insert information into the Xsan file under that directory.

- 4 Copy from the following template and paste into the file to create the file `config.plist` in `/Library/Filesystems/Xsan/config/`.

Note: Items in **red** indicate data you should enter which applies to your configuration. Do not enter the literal red text shown in the template.

For example, for `<string>My IP Address</string>` you would enter the netmask in the format X.Y.Z.0/24 (for example, `<string>10.65.182.0/24</string>`) not the words "My IP Address."

```
<?xml version="1.0" encoding="UTF-8"?>
<!DOCTYPE plist PUBLIC "-//Apple//DTD PLIST 1.0//EN" "http://
www.apple.com/DTDs/PropertyList-1.0.dtd">
<plist version="1.0">
<dict>
  <key>computers</key>
  <array/>
  <key>metadataNetwork</key>
  <string>My IP Address</string>
  <key>ownerEmail</key>
  <string>me@mycompany.com</string>
  <key>ownerName</key>
  <string>My Name</string>
  <key>role</key>
  <string>CLIENT</string>
  <key>sanName</key>
  <string>My SAN name</string>
  <key>serialNumbers</key>
  <array>
    <dict>
      <key>license</key>
      <string>xsan client license number</string>
      <key>organization</key>
      <string>organization name</string>
      <key>registeredTo</key>
      <string>registered to name</string>
    </dict>
  </array>
</dict>
</plist>
```

- 5 Copy from the following template and paste into the file to create an automount.plist file located in /Library/Filesystems/Xsan/config/.

Note: Items in **red** indicate data you should enter which applies to your configuration. Do not enter the red text shown in the template.

For example, for `<key>file system</key>` you would enter the name of your file system, not “file system.”

```
<?xml version="1.0" encoding="UTF-8"?>
<!DOCTYPE plist PUBLIC "-//Apple Computer//DTD PLIST 1.0//EN" "http://
www.apple.com/DTDs/PropertyList-1.0.dtd">
<plist version="1.0">
  <dict>
    <key>file system</key>
    <dict>
      <key>AutoMount</key>
      <string>rw</string>
      <key>MountOptions</key>
      <dict/>
    </dict>
  </plist>
```

- 6 Navigate to an existing StorNext server on the SAN and copy the `fsnameservers` file to your Macintosh client in `/Library/Filesystems/Xsan/config/`. This file should contain the IP addresses of the name server machines.

On Unix: the `fsnameservers` file is located at `/usr/cvfs/config/`.

On Windows: the `fsnameservers` file is located at `%cvfsroot%\config\` (where `%cvfsroot%` is the directory where the StorNext software is installed). This directory is usually located in `C:\Program Files\Stornext\config\`.

Note: If the content of the `fsnameservers` file specifies a fully qualified domain name (FQDN), you must convert this to the metadata controller's IP address by using the command `host <FQDN>`.

- 7 Run `RegisterSeRV` in Terminal to ensure that the serial number is recognized. Text will be returned if the serial number is not recognized. (No messages are displayed if the serial number is successfully registered.)

- 8 Run the following in Terminal to update Xsan with the new file system information:

```
launchctl unload /System/Library/LaunchDaemons/com.apple.xsan.plist  
launchctl load /System/Library/LaunchDaemons/com.apple.xsan.plist
```

Note: Unload will fail if plist is not loaded.

If the file system does not mount automatically, manually mount the StorNext file system. In the Terminal type `xsanctl mount <fsname>` Where `<fsname>` is the file system name displayed in `cvadmin`. The SNFS file system should now be mounted on the Mac OS X computer.

Viewing a Fibre Channel Device

Use this procedure to add a Fibre Channel (FC) device. Before adding a FC device, first configure the Host Bus Adapter (HBA) card so you can view the device. Use the `fs_scsi -p` command to make sure you can view your devices over FC. FC devices include tape libraries, individual drives, or RAID disk.

Note: The `fs_scsi -p` command is only available if the storage manager is installed on the FSM server.

- 1 Type the `/usr/adic/TSM/util/fs_scsi -p` command to make sure that the necessary devices can be viewed over FC.
 - To view tape libraries, access the StorNext GUI to view your tape libraries.
 - To view individual drives or RAID LUNs, access either the StorNext or SNFS GUI.

To add a disk, see Chapter 6, “Managing the File System,” in the *StorNext User’s Guide*. To add a tape drive to a configured library, see Chapter 8, “Managing Drives and Disks,” in the *StorNext User’s Guide*.

StorNext Log Rolling Administration

Use the following procedures to configure StorNext log rolling options.

Changing Log Rolling Times

Use this procedure to change the frequency of rolling the StorNext logs. This process requires that you edit the **tdlm crontab** to set log times. Use this procedure to edit **tdlm crontab**.

- 1 Log on as root.
- 2 Edit the **tdlm crontab** and update the **sn_log_update script**.

Below is an example crontab:

```
0 1,7,13,19 * * * /usr/adic/www/bin/cmdwrap /usr/adic/util/sn_log_update /usr/adic
```

where 0 1,7,13,19 * * * designates the times when logs run.

Log Rolling Options

In this release of StorNext the **sn_log_update** information is overwritten and no longer contains the **\$DEF_SIZE** or the **\$DEF_LOGS** variables. These entries are now contained in the **sn_log_update.cfg** file

You can change these options to optimize log rolling.

- **-s**: This option sets the directory where logs are saved (copied) to as they are rolled. This directory is typically a managed directory. For example:

```
sn_log_update [-s <dir>]
```

where *<dir>* is the directory where you want the logs to reside.
- **\$DEF_SIZE = 2000000**: This is the default size at which logs are rolled. Edit this entry in the **/usr/adic/util/sn_log_update.cfg** file if you want the log sizes to be larger or smaller.
- **\$DEF_LOGS = 28**: This is the default number of logs that are saved before they are deleted. Edit this entry in the **/usr/adic/util/sn_log_update.cfg** file if you want to save less than 28 logs or are saving the logs to a managed directory.

Avoiding Poor System Performance

Most systems run administrator scripts to rebuild namespace databases and/or to remove certain files. Unfortunately, running these scripts can degrade StorNext performance. It is recommended that you review administrator scripts to determine if they may adversely affect your StorNext installation and its performance.

For example, many UNIX systems have a `find` command in the **root crontab** that traverses the entire directory hierarchy while searching for old temporary and core files. Typically, the `find` commands are configured only to run on the local file system. However by default, these commands do not skip StorNext file systems because they are considered to be local, even though the file system manager may be running remotely. StorNext performance can be dramatically degraded when these commands visit a StorNext file system if the system contains a large number of files.

If StorNext performance is degraded to an unacceptable level due to the operation of administrator scripts, you can modify them to skip StorNext file systems. A sample command (original and modified is shown below:

On IRIX, by default, the **root crontab** contains the following `find` command:

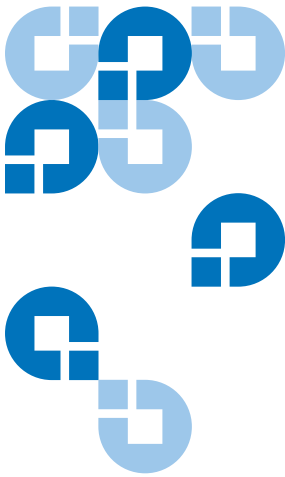
```
find / -local -type f '(' -name core -o -name dead.letter ')' -atime +7 -mtime +7  
-exec rm -f '{}' ';' ;
```

To prevent the `find` command from searching in StorNext file systems, modify it as shown:

```
('' -type d -fstype cvfs -prune ')' -o
```

The modified `find` command looks like this:

```
find / -local '(' -type d -fstype cvfs ')' -o -type f '(' -name core -o -name  
dead.letter ')' -atime +7 -mtime +7 -exec rm -f '{}' ';' ;
```



Appendix C StorNext Files

StorNext creates a series of files that are used and modified to configure a file system. This section includes an expanded `example.cfg` file and a listing of the most commonly used StorNext files with descriptions and locations for each.

The `example.cfg` File

The following is listing of the configuration file created by StorNext. This file is modified during the configuration of a file system. The location for this file is: `/usr/cvfs/examples/example.cfg`

```
# *****  
  
# A global section for defining file system-wide parameters.  
#  
# For Explanations of Values in this file see the following:  
#  
# UNIX Users:  man cvfs_config  
# Windows Users: Start > Programs > StorNext File System > Help >  
# Configuration File Internal Format
```

```
# *****
GlobalSuperUser    Yes  ## Must be set to Yes for SNMS Managed File
Systems ##
WindowsSecurity    No
Quotas             No
FileLocks          No
DataMigration      No  ## SNMS Managed File Systems Only ##
InodeExpandMin     32K
InodeExpandInc     128K
InodeExpandMax     8M
FsBlockSize        16K
JournalSize        16M
AllocationStrategy Round
MaxConnections     32
ForceStripeAlignment Yes
Debug              0x0
MaxLogSize         4M
MaxLogs            4

#
# Globals Defaulted
#

# ThreadPoolSize      64 # default 16, 2 MB memory per thread
# InodeCacheSize      32K # 800-1000 bytes each, default 8K
# BufferCacheSize     64M # default 32MB
# StripeAlignSize     2M # auto alignment, default MAX(StripeBreadth)
# MaxMBPerClientReserve 50 # in MBs, default 100MB reserved per client
# OpHangLimitSecs    300 # default 180 secs
# DataMigrationThreadPoolSize 128 # Managed only, default 8
# *****
# A disktype section for defining disk hardware parameters.
# *****
```

```
[DiskType MetaDrive] ##1+1 Raid 1 Mirrored Pair##  
Sectors XXXXXXXX ## Sectors Per Disk From Command "cvlabel -l" ##  
SectorSize 512
```

```
[DiskType JournalDrive] ##1+1 Raid 1 Mirrored Pair##  
Sectors XXXXXXXX  
SectorSize 512
```

```
[DiskType VideoDrive] ##8+1 Raid 5 Lun for Video##  
Sectors XXXXXXXX  
SectorSize 512
```

```
[DiskType AudioDrive] ##4+1 Raid 3 Lun for Audio##  
Sectors XXXXXXXX  
SectorSize 512
```

```
[DiskType DataDrive] ##4+1 Raid 5 Lun for Regular Data##  
Sectors XXXXXXXX  
SectorSize 512
```

```
# *****  
# A disk section for defining disks in the hardware configuration.  
*****
```

```
[Disk CvfsDisk0]  
Status UP  
Type MetaDrive
```

```
[Disk CvfsDisk1]  
Status UP  
Type JournalDrive
```

```
[Disk CvfsDisk2]
```


Status UP
Type VideoDrive

[Disk CvfsDisk3]
Status UP
Type VideoDrive

[Disk CvfsDisk4]
Status UP
Type VideoDrive

[Disk CvfsDisk5]
Status UP
Type VideoDrive

[Disk CvfsDisk6]
Status UP
Type VideoDrive

[Disk CvfsDisk7]
Status UP
Type VideoDrive

[Disk CvfsDisk8]
Status UP
Type VideoDrive

[Disk CvfsDisk9]
Status UP
Type VideoDrive

[Disk CvfsDisk10]
Status UP
Type AudioDrive

[Disk CvfsDisk11]

Status UP

Type AudioDrive

[Disk CvfsDisk12]

Status UP

Type AudioDrive

[Disk CvfsDisk13]

Status UP

Type AudioDrive

[Disk CvfsDisk14]

Status UP

Type DataDrive

[Disk CvfsDisk15]

Status UP

Type DataDrive

[Disk CvfsDisk16]

Status UP

Type DataDrive

[Disk CvfsDisk17]

Status UP

Type DataDrive

A stripe section for defining stripe groups.

[StripeGroup MetaFiles]

Status UP
MetaData Yes
Journal No
Exclusive Yes
Read Enabled
Write Enabled
StripeBreadth 256K
MultiPathMethod Rotate
Node CvfsDisk0 0

[StripeGroup JournFiles]

Status UP
Journal Yes
MetaData No
Exclusive Yes
Read Enabled
Write Enabled
StripeBreadth 256K
MultiPathMethod Rotate
Node CvfsDisk1 0

[StripeGroup VideoFiles]

Status UP
Exclusive Yes##Exclusive StripeGroup for Video Files Only##
Affinity VidFiles
Read Enabled
Write Enabled
StripeBreadth 4M
MultiPathMethod Rotate
Node CvfsDisk2 0
Node CvfsDisk3 1
Node CvfsDisk4 2
Node CvfsDisk5 3

Node CvfsDisk6 4

Node CvfsDisk7 5

Node CvfsDisk8 6

Node CvfsDisk9 7

[StripeGroup AudioFiles]

Status UP

Exclusive Yes##Exclusive StripeGroup for Audio File Only##

Affinity AudFiles

Read Enabled

Write Enabled

StripeBreadth 1M

MultiPathMethod Rotate

Node CvfsDisk10 0

Node CvfsDisk11 1

Node CvfsDisk12 2

Node CvfsDisk13 3

[StripeGroup RegularFiles]

Status UP

Exclusive No##Non-Exclusive StripeGroup for all Files##

Read Enabled

Write Enabled

StripeBreadth 256K

MultiPathMethod Rotate

Node CvfsDisk14 0

Node CvfsDisk15 1

Node CvfsDisk16 2

Node CvfsDisk17 3

Commonly Used SNFS Files

The following is a list of commonly used SNFS files and provides the name and location of the files installed during a SNFS installation. Each entry also includes a brief description of the file's utility in SNFS functionality.

- **/usr/cvfs/bin/**

`cvadmin` – Allows you to view and modify the active SNFS system(s).

`cvaffinity` – Associates a stripe group with a media type.

`cvcp` – A high-speed file copy utility.

`cvdb` – A client debugging tool.

`cvdbset` – A wrapper for `cvdb`.

`cvfsck` – A utility to check and repair a SNFS file system.

`cvfsd` – SNFS server daemon launched at mount time.

`cvfsdb` – A metadata debugging tool.

`cvfsid` – Provides the SNFS site identifier

`cvlabel` – Lists and labels SNFS drives.

`cvmkdir` – Associates an affinity with a directory.

`cvmkfile` – Pre-allocates space and attributes for a file.

`cvmkfs` – Initializes a SNFS file system

`cvupdatefs` – Modifies the configuration of an existing SNFS file system.

`cvversions` – Lists SNFS version information.

`fsm` – A SNFS server daemon.

`fspm` – A SNFS portmapper daemon.

`mount_cvfs` – A mount helper for SNFS.

`snfsdefrag` – Defragments files and file systems.

- **/usr/cvfs/config/**

`fsmlist` – A list of SNFS file systems that have been serviced.

fsnameservers – Identifies the SNFS name service coordinators.

license.dat – The SNFS license file.

- **/usr/cvfs/data/<FS Name>/log/**

Cvlog – debug and runtime messages

- **/usr/cvfs/debug/**

cvfsd.out – Displays debug and status messages from cvfsd.

fsmpm.out – Displays debug and status messages from fsmpm.

mountall.out – Displays debug and status messages from mount_cvfs.

nssdbg.out – Displays debug and status messages from fsmpm.

- **/usr/cvfs/CLIENTS/** – The following are client installation files for various operating systems.

sn_dsm_aix52_client.tar

sn_dsm_irix65f_client.tar

sn_dsm_irix65m_client.tar

sn_dsm_linuxRH_80i386smp_client.tar

sn_dsm_linuxRH_80i386up_client.tar

sn_dsm_linuxRH_AS_3i386smp_client.tar

sn_dsm_linuxRH_AS_3ia64smp_client.tar

sn_dsm_linuxSuSE_81i386smp_client.tar

sn_dsm_linuxSuSE_81i386up_client.tar

sn_dsm_solaris58sparc64_client.tar

sn_dsm_solaris59sparc64_client.tar

sn_dsm_win2k_client.exe

sn_dsm_winnt_client.exe

- **/usr/cvfs/docs/**

external_api.pdf – Documentation for the SNFS API.

- **/usr/cvfs/examples/** – The following are examples of files that are present in certain file system configurations. For example, the cvfail.example will be in the configuration file of a system running failover.

cvfail.example

cvlabels.example

cvpaths.example

example.cfg

fsmlist.example

fsnameservers.example

fsports.example

fsroutes.example

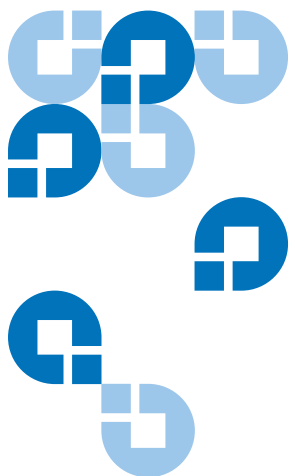
- **/usr/cvfs/lib/**

cvextapi.a — A SNFS API library.

- **libcvfsdmapi.a** — A SNFS DMAPAPI library.

- **/usr/cvfs/src/**

cvapi.c — A sample API application.



Quality of Service Guide

This appendix describes how to configure and use the StorNext File System (SNFS) Quality of Service (QOS) feature. QOS allows real-time applications to reserve some amount of bandwidth on the storage system. This is known as real-time I/O (RTIO). SNFS gates (that is, throttles) non-real-time applications so their I/O accesses do not interfere with the real-time application.

QOS is a *passive* implementation in that it does not actively monitor a process' activity and then schedule the process so that it receives the bandwidth it has requested. It is up to real-time applications to gate their own I/O requests to the desired rate. SNFS QOS provides a “get out of the way” gating for non-real-time I/O requests so they do not hinder the real-time requests.

QOS is fully functional in SNFS version 2.1.2 and later. Earlier versions of SNFS do not support QOS. If a pre-QOS client connects, the file system manager (FSM) logs a message to **syslog**. If the pre-QOS client connects while real-time I/O is in progress, the message is logged at the critical event level.

The remainder of this document explains the client and server configuration settings for QOS; describes the use of tokens and callbacks for gating non-real-time I/O; describes setting real-time I/O on a file; and discusses the performance monitoring tools that are available for diagnosis.

Overview

QOS is stripe-group centric; all configuration and operations act on a specific stripe group. This allows stripe groups with differing access characteristics to use different real-time settings. When a client requests a certain amount of real-time I/O, the FSM informs all connected clients of the amount remaining and available for non-real-time I/O accesses.

This information is encapsulated in a token. Think of the token as a capability that enables the client to perform I/O without contacting the FSM. When the amount of real-time I/O on a stripe group changes, the FSM informs all connected clients about the change via a callback.

In both the client and the server, QOS is implemented as a state machine. Each state has a set of events and allowable actions. In this document, the term *state* thusly refers to the internal state machine.

Active vs. Passive

QOS is a passive, not active implementation of real-time I/O. In an active implementation (such as the SGI IRIX guaranteed rate I/O known as GRIO), the scheduler is tightly coupled with the I/O subsystem. The qualities of the disk subsystem are well known so the scheduler can guarantee that a process will be scheduled such that it will receive the required amount of bandwidth. Since SNFS is a cross-platform file system that does not have hooks in the operating system scheduler, it cannot provide such a guarantee.

In a passive implementation, a real-time process gates its I/O according to some outside metric (such as a frame rate for specific video formats). The file system then gates all other non-real-time I/O so they do not interfere.

These differences cannot be over-stressed. It is a misconception to think that QOS, despite its name, guarantees a specific amount of real-time I/O to a process.

Supported Platforms

QOS has been tested on Windows XP, Linux, IRIX, and Solaris. In the Windows world, an application gets a handle to a file to perform I/O, usually via the Win32 CreateFile() API. In the UNIX world, an application receives a file descriptor (fd) via the open(2) system call. In this document, "handle" is synonymous with fd.

Configuration

The primary configuration for QOS is in the FSM configuration file. No client configuration is required, although there is a QOS tuning parameter that can be specified when the file system is mounted.

Unit of I/O

Real-time I/O is based on well-formed I/O. This means that for the purposes of determining bandwidth rates, well-formed I/O is characterized as being a stripe width in size. This makes the best utilization of the disks in the stripe group and maximizes the transfer rate. Internally, non-real-time I/O is tracked by number of I/O operations per second. An I/O operation is a minimum of a file system block size, and a maximum of the file system block size multiplied by the stripe breadth

(FsBlocksize * StripeBreadth).

$$\text{FsBlockSize} \leq \text{I/O} \leq (\text{FsBlockSize} * \text{StripeBreadth})$$

Converting MB/sec to I/O/sec

Typically, it is easier to qualify an I/O subsystem in terms of MB/sec that can be sustained. However, internally the file system tracks everything on an I/O/sec basis. Note that the file system tracks only non-real-time I/O (that is, it gates only non-real-time I/O). An I/O is a minimum of the file system block size, and is typically the point at which the file system hands the request off to the disk driver (IoCallDriver in Windows, or a strategy call in UNIX).

The file system counts the number of I/Os that have taken place during a given second. If the number exceeds that which is allotted, the request is pended until I/O becomes available (typically in the next second). I/O is honored in FIFO fashion; no priority is assigned.

To convert between I/Os and MB/sec, SNFS uses a somewhat unique formula that quantifies I/O as well-formed. The rationale behind this is due to the way in which many video applications make real-time I/O requests. To optimize the disk subsystem, real-time I/Os are well-formed so they saturate the disks. In SNFS terminology, this would be an I/O that covers all of the disks in a stripe. This can be expressed as follows:

$$\text{ios_sec} = \text{mb_sec} /$$

$$(\text{stripe_breadth} * \text{stripe_depth} * \text{fs_blocksize})$$

For example, with a file system blocksize of 4k, a stripe_breadth of 384, and a stripe_depth of four, the equivalent number of I/Os/sec for each well-formed I/O would be 216 Mb/sec / (384 * 4 * 4k). This is equivalent to 221184 k/sec / 6144k = 36 I/O/sec.

Server Configuration

All storage subsystems are different, so users must qualify the I/O subsystem and determine the maximum amount of I/O bandwidth available. SNFS relies on the correct setting in the configuration file; if the storage system changes (for example, because of a new disk array,) the user must re-qualify the I/O subsystem to determine the amount of bandwidth available. This amount will be specified in the FSM configuration file. The user can also specify the minimum amount of bandwidth to be provided to non-real-time applications.

There are five keywords controlling QOS that can be specified in the stripe group section of the FSM configuration file. Not all keywords need be present. Typically, the user specifies the RTIO bandwidth in terms of either number of I/O operations per second (rtios) or megabytes per second (rtmb). Keywords are not case sensitive.

For a minimum configuration, only the real-time limit (either rtios or rtmb) need be specified. All other configuration variables default to reasonable values.

Table 28 QOS Configuration
Keywords

Name	Description	Default
Rtios	The maximum number of real-time I/Os allowed in a stripe group during any one-second period.	0 (no real-time)
Rtmb	Maximum amount of real-time MB/sec allowed on the stripe group during any one-second period.	0 (no real-time)

Name	Description	Default
RtiosReserve	Amount of reserve in I/Os/sec from the maximum allowed for non-real-time I/Os. Must be greater than the equivalent to 1MB/sec or the amount that can be transferred to a single stripe line.	Equivalent to 1MB/sec
RtmbReserve	Amount to reserve in MB/sec from the maximum allowed for non-real-time I/O.	Must be greater than 1. 1MB/sec
RtTokenTimeout	Time in seconds to wait for clients to respond to a token callback.	2 seconds

RTIO Upper Bound

The limit will be specified in terms of I/Os per second (parameter Rtios) or in terms of MB/sec (parameter Rtmb). Case is not sensitive. Note that I/Os per second are I/Os of any size to the disk subsystem. Either or both may be specified. If both are specified, the lower limit is used to throttle I/O. If neither is specified, no real-time I/O is available on the stripe group. These parameters are applied to a stripe group definition.

```
[StripeGroup MyStripeGroup]
```

```
Rtios 2048
```

```
Rtmb 10
```

The above example specifies that the storage system can support a maximum of 2048 I/Os per second at any instant, aggregate among all the clients, or 10 MB/sec, whichever is lower.

Most real-time I/O requests will be a stripe line at a time to maximize performance. Non-real-time I/Os will be a minimum of a file system block size.

Note: It is important to realize that the `rtios` and `rtmb` settings refer to the total amount of sustained bandwidth available on the disk subsystem. Any I/O, either real-time or non-real-time, will ultimately be deducted from this overall limit. The calculations of available real-time and non-real-time are discussed later.

Specifying `rtmb` in the FSM configuration file is only recommended if all I/Os are well formed (that is, a full stripe width). Otherwise, the conversion between MB/sec and I/Os/sec using the well-formed I/O calculation could lead to unexpected results.

Reserve

To prevent deadlock, the QOS implementation never allows zero I/O/sec for non-real-time I/O. Otherwise, a system could block with many critical file system resources held waiting for I/O to become available. This is especially true via flush-on-close I/O via the buffer cache. It becomes extremely difficult to diagnose system hangs because no I/O is available. For this reason, QOS always reserves some amount of I/O for non-real-time I/O.

The minimum amount of non-real-time I/O reserved for non-real-time applications is one MB/sec. This can be changed via the stripe group section parameters (again, case is not sensitive). If both are specified, the lower of the two amounts is chosen. This amount is shared by all non-real-time applications on each client.

```
[StripeGroup MyStripeGroup]
```

```
RtiosReserve 256
```

```
RtmbReserve 2
```

Token Timeouts

The `RtTokenTimeout` parameter controls the amount of time the FSM waits for clients to respond to callbacks. In most normal SANs, the default two-second setting is sufficient. This value may need to be changed for a SAN that has a mixture of client machine types (Linux, NT, IRIX, etc.) that all have different TCP/IP characteristics. Also, large numbers of clients (greater than 32) may also require increasing the parameter.

For example, if the FSM should ever fail, the clients will attempt to reconnect. When the FSM comes back online, the amount of time the clients take to re-establish their TCP/IP connection to the FSM can differ wildly. To avoid unnecessary timeouts, the `RtTokenTimeout` parameter can be increased, meaning the FSM waits longer for callback responses.

If a client times out on a token retraction, the original requestor receives an error from the FSM that includes the IP address of the offending client. This error is logged to **syslog**, and alternatively to the desktop on Windows clients. This can help in diagnosing reconnect failures, and in determining if the token time value should be increased.

Client Configuration

When a client obtains a non-real-time I/O token from the FSM, the token allows the client a specific amount of non-real-time I/O. If the client is inactive for a period of time, the token is relinquished and the non-real-time I/O released back to the FSM for distribution to other clients. The timeout period is controlled by the `nrtiotokenhold` mount option on UNIX platforms, and the QOS Token Hold Time parameter in the mount options tab of the SNFS control panel on Windows platforms. The default is sixty (60) seconds.

This means that after sixty seconds without non-real-time I/O on a stripe group, the non-real-time token for that stripe group is released. The parameter should be specified in five (5) second increments. If it is not, it will be silently rounded up to the next five-second boundary. If the **syslog** level is set to debug, the file system dumps out its mount parameters so the value can be seen.

Real-time I/O

A process requests real-time (ungated) I/O by using the SNFS External API `SetRtio` call (`F_SETRIO ioctl`). A library function is included in the External API sample source code that provides all the required cross-platform handling.

As an example, assume that a video playback application requires a constant rate of 186 MB/sec to correctly display images without dropping any frames. The application gates itself; that is, it requests I/O at a rate to satisfy the requirements of correctly displaying an image. QOS provides a mechanism so other I/O requests do not perturb the real-time display.

In the following example, assume the I/O subsystem has been qualified at 216 MB/sec. The file system block size is 4k. The disk subsystem is actually a large RAID array that internally maps many drives to a single LUN. There are four LUNs in the stripe group; each LUN is optimized for a 1.5 MB transfer. This corresponds to the following in the fsm configuration file:

```
[StripeGroup MyStripeGroup]
  StripeBreadth 384
  Node CvfsDisk0 0
  Node CvfsDisk1 1
  Node CvfsDisk2 2
  Node CvfsDisk3 3
  Rtmb 216
```

Also, assume there is only one stripe group for user data in the file system. As recommended by Quantum, there may be other stripe groups for metadata and journal that are not shown.

SetRtio

Initially, all stripe groups in the file system are in non-real-time mode. Clients make their requests directly to the I/O subsystem without any gating. In our example, the process requires 186 MB/sec and the system designers know there will never be a need to support more than one stream at 186 MB/sec.

The `SetRtio` request has a number of flags and parameters to control its operation. These are all documented in the [external_api.pdf](#) file that describes the external API in detail. For this example, set the handle for the indicated stripe group using the `RT_SET` parameter.

Oversubscription

In most cases, system designers ensure that the amount of `rtio` is not oversubscribed. This means that processes will not ask for more `rtio` than is specified in the configuration file. However, it is possible to request more `rtio` than is configured. The API uses the `RT_MUST` flag to indicate that the call must succeed with the specified amount. If the flag is clear, the call allocates as much as it can. In both cases, the amount allocated is returned to the caller.

Handles

The `SetRtio` call accepts two different types of handles. The first is a handle to the root directory. In this mode the stripe group is put into real-time mode, but no specific file handle is tagged as being ungated. Real-time I/O continues on the stripe group until it is explicitly cleared with a `SetRtio` call on the root directory that specifies the `RT_CLEAR` flag; the file system is unmounted; or the system is rebooted. It is up to the application to make a subsequent call to `EnableRtio` (`F_ENABLERTIO`) on a specific handle.

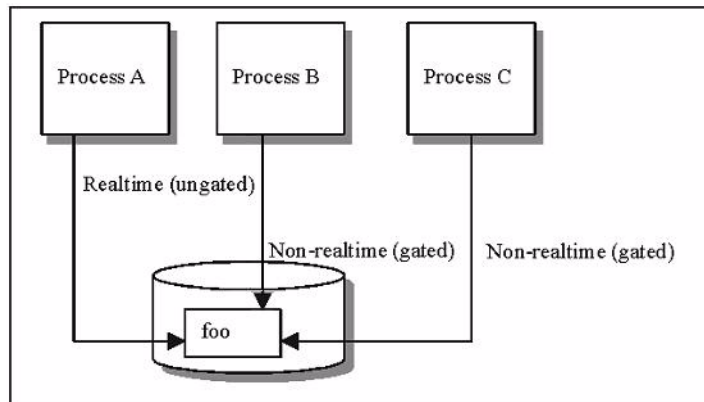
If the handle in the `SetRtio` call refers to a regular file, it is the equivalent of a `SetRtio` call on the root directory followed by an `EnableRtio` call. The file handle will be ungated until it is closed, cleared (`RT_CLEAR` in a `SetRtio` call), or disabled (`DisableRtio`). When the handle is closed, the amount of real-time I/O is released back to the system. This causes the FSM to readjust the amount of bandwidth available to all clients by issuing a series of callbacks.

The client automatically issues a call to the FSM with the `RT_CLEAR` flag specifying the amount of real-time I/O set on the file. If multiple handles are open on the file—each with a different amount of real-time I/O—only the last file close triggers the releasing action; all aggregate `rtio` are released.

This automatic clearing of real-time I/O is carried out in the context of the process that is closing the file. If the FSM cannot be reached for some reason, the request is enqueued on a daemon and the process closing the file is allowed to continue. In the background, the daemon attempts to inform the FSM that the real-time I/O has been released.

Different processes can share the same file in real-time and non-real-time mode. This is because the level of gating is at the handle level, not the file level. This allows a real-time process to perform ingest of material (video data) at the same time as non-real-time processes are performing other operations on the file.

Figure 59 Sharing Access to Files



In [Figure 59](#), Process A has un gated access to file **foo**. Processes B and C also are accessing file **foo**, but the client gates their I/O accesses. If multiple handles are open to the same file and all are in real-time mode, only the last close of the handle releases the real-time I/O back to the system. This is because on most platforms the file system is informed only on the last close of a file.

Ungated files

It is also possible to denote using the `RT_NOGATE` flag that a handle should not be gated without specifying any amount of real-time I/O. This is useful for infrequently accessed files (such as index files) that should not be counted against the non-real-time I/O. System designers typically allow for some amount of overage in their I/O subsystem to account for non-gated files.

Calculating Available RTIO

When the FSM receives a request for `rtio`, it takes the amount reserved into consideration. The reserve amount functions as a soft limit beyond which the FSM will not traipse. The calculation for `rtio` is as follows:

```
avail_rtio = rtio_limit - rtio_current
```

```
avail_rtio -= rtio_reserve
```

All internal calculations are done in terms of I/O/sec.

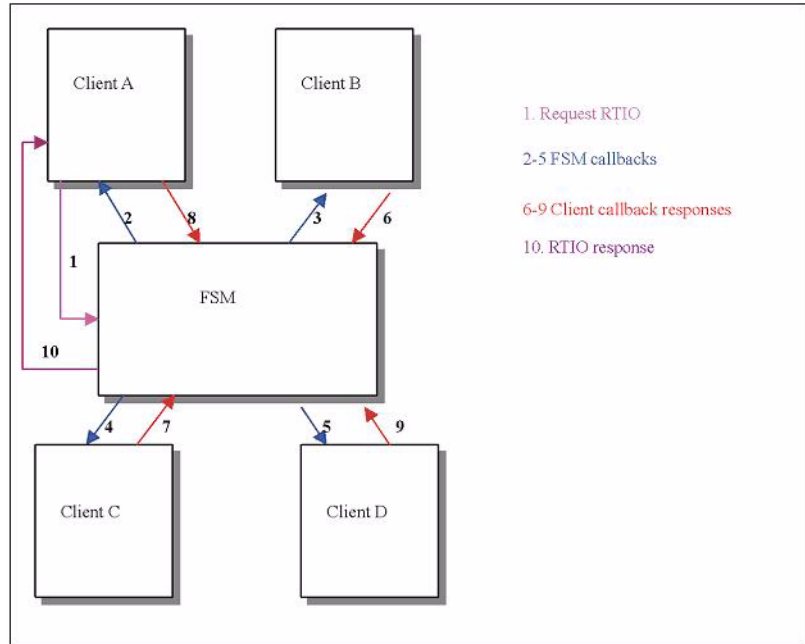
Callbacks

The cornerstones of the communications between the FSM and the client are callbacks and tokens. A callback is an unsolicited message from the FSM to the client requesting that the client adjust its real-time I/O parameters. The callback contains a token that specifies the amount of non-real-time I/O available on a stripe group.

Initially, all stripe groups in a file system are in non-real-time (ungated) mode. When the FSM receives the initial request for real-time I/O, it first issues callbacks to all clients informing them that the stripe group is now in real-time mode. The token accompanying the message specifies no I/O is available for non-real-time I/O. Clients must now obtain a non-real-time token before they can do any non-real-time I/O.

After sending out all callbacks, the FSM sets a timer based on the `RtTokenTimeout` value, which by default is set to five seconds. If all clients respond to the callbacks within the timeout value the `rtio` request succeeds, and a response is set to the requesting client.

Figure 60 Callback Flow for Initial RTIO Request



In the above diagram, a process on client A requests some amount of RTIO in Step 1. Since this is the first request, the FSM issues callbacks to all connected clients (Steps 2-5) informing them that the stripe group is now in real-time mode. The clients respond to the FSM in Steps 6-9. After all the clients have responded, the FSM responds to the original requesting client in Step 10.

If the timer expires and one or more clients have not responded, the FSM must retract the callbacks. It issues a response to the requesting client with the IP number of the first client that did not respond to the callback. This allows the requesting client to log the error with the IP number so system administrators have a chance of diagnosing the failure. It then sends out callbacks to all the clients to which it first sent the callbacks, retracting them to the original state. In our example, it would set the stripe group back to non-real-time mode.

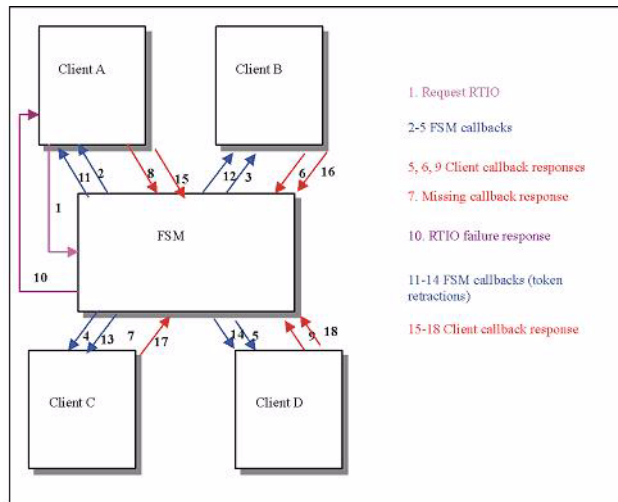
After sending out the callbacks, the FSM waits for a response using the `RtTokenTimeout` value as before. If a client again does not respond within the timeout value, the callbacks are retracted and sent out again. This repeats until all clients respond. During this time of token retractions, real-time requests cannot be honored and will only be enqueued.

Callback Failures

The FSM must handle a case where a client does not respond to a callback within the specified timeout period (RtTokenTimeout). If a client does not respond to a callback, the FSM must assume the worst: that it is a rogue that could wreak havoc on real-time I/O. It must retract the tokens it just issued and return to the previous state.

As mentioned earlier, the original requestor will receive an error (EREMOTE) and the IP address of the first client that did not respond to the callback. The FSM enters the token retraction state, and will not honor any real-time or token requests until it has received positive acknowledgement from all clients to which it originally sent the callbacks.

Figure 61 Callback Retraction Example



In [Figure 61](#), Client A requests some amount of rto as in [Figure 60](#). However, assume that Client C did not respond to the initial callback in time (step 7). The FSM will return a failure to Client A for the initial rto request, then send out callbacks to all clients indicating the stripe group is no longer real-time (steps 11-14). In the example, Client C responds to the second callback, so the FSM will not send out any more callbacks. The stripe group is back in non-real-time mode.

Note that this can have interesting repercussions with file systems that are soft mounted by default (such as Windows). When the caller times out because other clients are not responding and then gives up and returns an error to the application, if at some point the FSM is able to process the rto request it may result in the stripe group being put into

real-time mode after the original caller has received an error code. Both the FSM and clients log their actions extensively to **syslog**, so if this situation arises it can be detected.

In [Figure 61](#), if the stripe group were already in real-time mode the FSM would only send out callbacks to those clients that already have tokens. Once all clients responded to the token callbacks, the stripe group would be back in its original state.

Tokens

A token grants a client some amount of non-real-time I/O for a stripe group. Tokens are encapsulated in callback messages from the FSM. Initially, no tokens are required to perform I/O. Once a stripe group is put into real-time mode, the FSM sends callbacks to all clients informing them that they will need a token to perform any non-real-time I/O. The first I/O after receiving the callback will then request a non-real-time I/O token from the FSM.

The FSM calculates the amount of non-real-time bandwidth using the following formula:

```
avail_nrtio = rtio_limit - rtio_current;
```

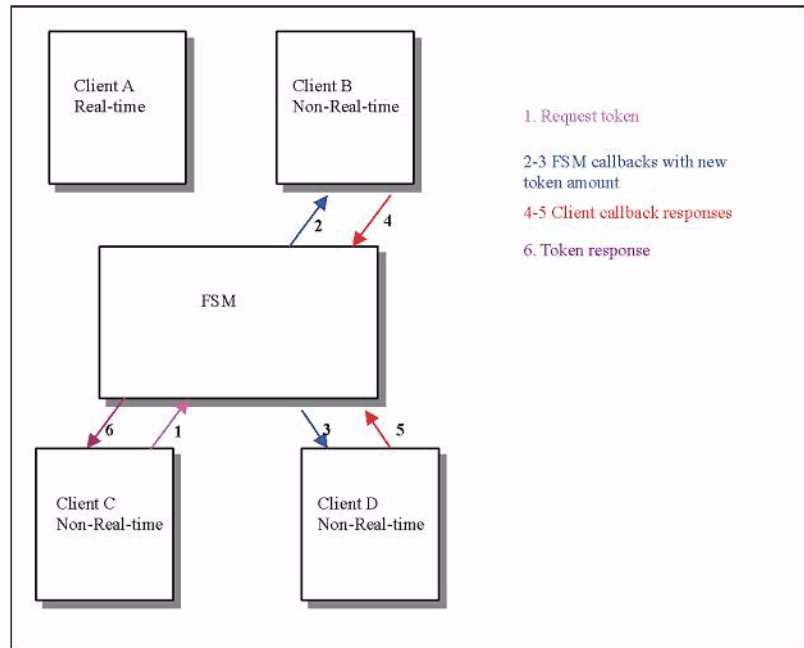
```
avail_nrtio /= current_num_nonrtio_clients + 1
```

In the above calculation, the amount of existing real-time I/O (`rtio_current`) has already been adjusted with the reserve parameter. As each client requests a non-real-time I/O token, the number of clients increases (`current_num_nonrtio_clients` in the above formula) and the amount of available non-real-time I/O decreases.

Each time there is a change in the amount of non-real-time I/O available, the FSM sends callbacks to the clients with tokens. It is important to note that unlike the initial set of callbacks where the FSM sent callbacks to all connected clients, it is now only necessary to send callbacks to those clients that have an existing token.

Once a client has a token, it can perform as much I/O per second as is allowed by that token. It does not need to contact the FSM on every I/O request. The FSM will inform the client whenever the token changes value.

Figure 62 Non-Real-time
Token Adjustments



In [Figure 62](#), assume the stripe group is already in real-time mode as a result of an `rtio` request from client A. Clients B and D are doing non-real-time I/O to the stripe group and have a token that specifies the amount of non-real-time I/O available. Client C then requests a non-real-time I/O token in Step 1. The FSM calls back to Clients B and D and specifies the new token amount in Steps 2-3. The clients respond in Steps 4-5, acknowledging the new token amount. The FSM then responds to Client C with the new token in Step 6.

Failure Semantics

There are two major failures that affect QOS: FSM crashes and client crashes. These can also be loss of communication (network outages). For client and server failures, the system attempts to readjust itself to the pre-failure state without any manual intervention.

FSM Failures

If the FSM crashes or is stopped, there is no immediate affect on real-time (ungated) I/O. As long as the I/O does not need to contact the FSM for some reason (attribute update, extent request, etc.), the I/O will continue. From the standpoint of QOS, the FSM being unavailable has no affect.

Non-real-time I/O will be pended until the FSM is re-connected. The rationale for this is that since the stripe group is in real-time mode, there is no way to know if the parameters have changed while the FSM is disconnected. The conservative design approach was taken to hold off all non-real-time I/O until the FSM is reconnected.

Once the client reconnects to the FSM, the client must re-request any real-time I/O it had previously requested. The FSM does not keep track of QOS parameters across crashes; that is, the information is not logged and is not persistent. Therefore, it is up to the clients to inform the FSM of the amount of required rtio and to put the FSM back into the same state as it was before the failure.

In most cases, this results in the amount of real-time and non-real-time I/O being exactly the same as it was before the crash. The only time this would be different is if the stripe group is oversubscribed. In this case, since more rtio had been requested than was actually available, and the FSM had adjusted the request amounts, it is not deterministically possible to re-create the picture exactly as it was before. Therefore, if a deterministic picture is required across reboots, it is advisable to not oversubscribe the amount of real-time I/O.

The process of each client re-requesting rtio is exactly the same as it was initially; once each client has reestablished its rtio parameters, the non-real-time I/O is allowed to proceed to request a non-real-time token. It may take several seconds for the SAN to settle back to its previous state. It may be necessary to adjust the RtTokenTimeout parameter on the FSM to account for clients that are slow in reconnecting to the FSM.

Client Failures

When a client disconnects either abruptly (via a crash or a network partition,) or in a controlled manner (via an unmount), the FSM releases the client's resources back to the SAN. If the client had real-time I/O on the stripe group, that amount of real-time I/O is released back to the system. This causes a series of callbacks to the clients (all clients if the stripe group is transitioning from real-time to non-real-time,) informing them of the new amount of non-real-time I/O available.

If the client had a non-real-time I/O token, the token is released and the amount of non-real-time I/O available is recalculated. Callbacks are sent

to all clients that have tokens informing them of the new amount of non-real-time I/O available.

Client Token Releases

While it is not a failure case, the handling of a client token release is exactly the same as in the case where the client disconnected. All clients retain non-real-time tokens for a fixed amount of time. The default is 60 seconds. This can be controlled via the `nrtiotokentimeout` mount option. After the specified period of inactivity (i.e., no non-real-time I/O on the stripe group), the client will release the token back to the FSM. The FSM will re-calculate the amount of non-real-time bandwidth available, and send out callbacks to other clients.

Therefore, if a situation exists where a periodic I/O operation occurs every 70 seconds, it would be beneficial to set the `nrtiotokentime` mount option to something greater than or equal to 70 seconds to cut down on system and SAN overhead.

Monitoring

The current real-time statistics are available via the `cvadmin` utility. The `show long` command has been enhanced to provide information as to the current limit, the minimum amount reserved for non-real-time I/O, the number of active clients, the amount currently committed, and the amount a non-real-time application could hope to get when requesting I/O.

Whenever the stripe group status changes (such as from non-real-time to real-time mode), an event is logged to **syslog** (system event log on Windows platforms).

On the NT platform, real-time performance is also available via the **perfmon** utility. There are counters for both the client (SNFS Client) and FSM (SNFS File System Server [FSS]). In the client, a number of `rtio_XXX` counters are available to track the number of real-time I/Os/sec, number of non-real-time I/O requests, non-real-time I/O starvation, and other counters. A full explanation of each counter is provided with the **perfmon** utility by clicking Explain. In the FSM, information about the number of outstanding non-real-time clients, available `rtio`, and other QOS information is available.

Performance counters are not enabled by default in the client. To enable them, you must execute `cvdb -P`; this toggles the state of collection. To turn off the **perfmon** counters, do another `cvdb -P`. To re-enable, again do `cvdb -P`, and so on. To clear all client counters to zero, disable, then re-enable the counters with `cvdb -P`.

Sharing Disk Resources

As a final example, consider the case of a full-featured disk subsystem (Redundant Array of Very Expensive Disks, or RAVED) using a very high speed interconnect. Many clients can share these disk arrays, but it is sometimes desirable to limit a client's access to the array. QOS provides a mechanism for political bandwidth management so that no one client can consume all the bandwidth of the channel interconnects.

In such a scenario, the stripe group would always be in real-time mode. Each client would have a token specifying the number of I/Os/sec permissible. In the current version of QOS, it is unfortunately not possible to assign different non-real-time limits to different clients.

The foundation of such an approach is a simple program that puts the stripe group into real-time mode as soon as the FSM is up and servicing requests. An example of such a program is included in the source code for the External API.

Once the stripe group is in real-time mode, the bandwidth as specified in the FSM configuration file is shared by all clients. In cases such as this, the real-time limit (`rtios` or `rtmb`) is calculated to be the total bandwidth desired to each client times the number of possible clients.

As each client attempted to access the disk subsystem, it would obtain a token. The FSM would send out callbacks adjusting down the amount of bandwidth available. No one client would be allowed to exceed the threshold specified in the non-real-time token. This assures fairness among all the clients.