

Installing Your Multifunction to Your Network for the First Time

PIXMA MP499

Mac OS

Installing Your Multifunction to Your Network for the First Time

PIXMA MP499

Mac OS

Preparing to Connect My Multifunction to My Network	3
Network Requirements	3
Notes on Wireless Connection	4
Installing the Drivers & Software	5
Registering the Printer & Scanner	14

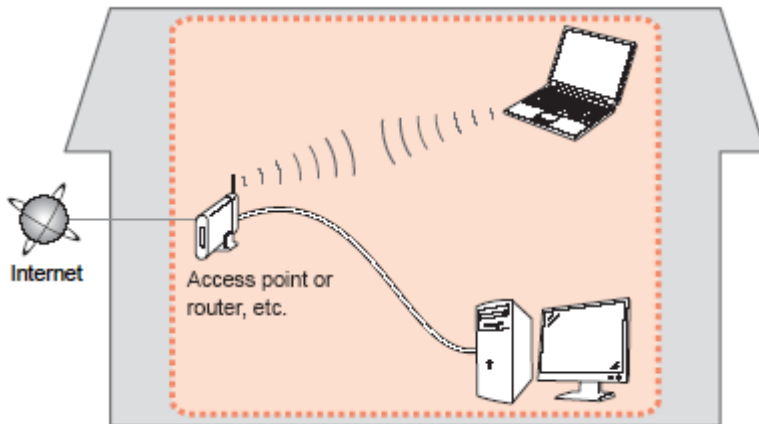
Preparing to Connect My Multifunction To My Network

[<< Previous](#)

[Next >>](#)

Network Requirements

Before connecting the machine to the network, make sure that configuration of the computer and access point or router is complete, and that the computer is connected to the network.



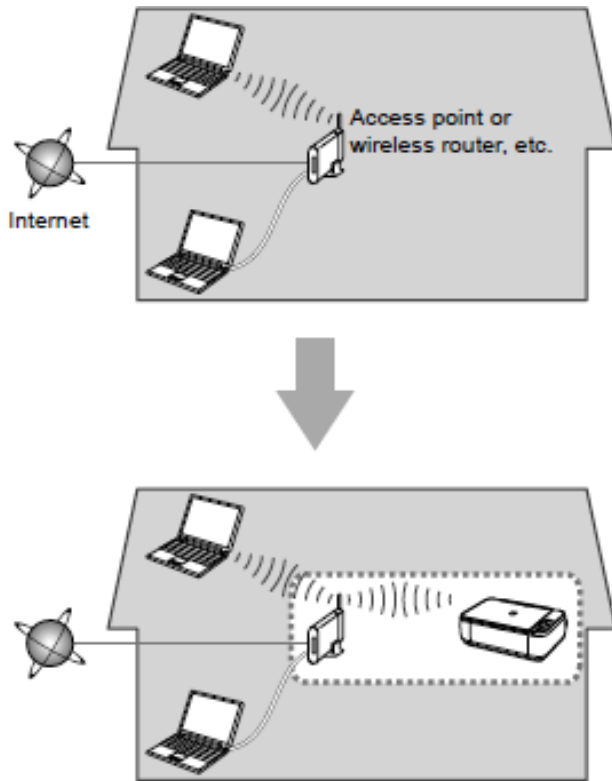
Wireless Connection

Before connecting the machine to the network, the computer needs to be connected to the network. Make sure that configuration of the computer and access point or router is complete.

Preparing to Connect My Multifunction To My Network

[<< Previous](#)

[Next >>](#)



An "Ad-hoc connection," which establishes a direct connection to the computer over a wireless connection without using an access point, is not supported.

Notes on Network Connection

The configuration, router functions, setup procedures and security settings of the network device vary depending on your system environment. For details, refer to your device's instruction manual or contact its manufacturer.

The machine cannot be used over a wireless and wired connection at the same time.

Software Installation

To use the machine by connecting it to a computer, software including the drivers needs to be copied (installed) to the computer's hard disk. The installation process takes about 20 minutes. (The installation time varies depending on the computer environment or the number of application software to be installed.)

IMPORTANT

- Log on as the administrator (or a member of the Administrators group).
- Quit all running applications before installation.
- Do not switch users during the installation process.
- Internet connection may be required during the installation. Connection fees may apply. Consult the internet service provider.
- It may be necessary to restart your computer during the installation process. Follow the on-screen instructions and do not remove the Setup CD-ROM during restarting. The installation resumes once your computer has restarted.
- If the firewall function of your security software is turned on, a warning message may appear that Canon software is attempting to access the network. If such a warning message appears, set the security software to always allow access.

Software Installation



Do not connect the wireless LAN setup cable yet. Software installation requires temporary use of the wireless LAN setup cable.

Step One

Turn on the computer, then insert the Setup **CD-ROM** into the CD-ROM drive.



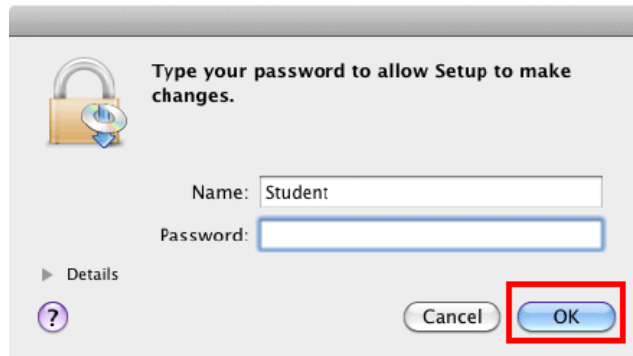
Step Two

Double-click the **Setup** icon of the CD-ROM folder to proceed to the following screen.




Step Three

Enter your administrator name and password. Click **OK**.



If the CD-ROM folder does not open automatically, double-click the CD-ROM icon on the desktop.



If you do not know your administrator name or password, click Help , then follow the on-screen instructions.

Step Four

Click **Easy Install**. Click **Install**.

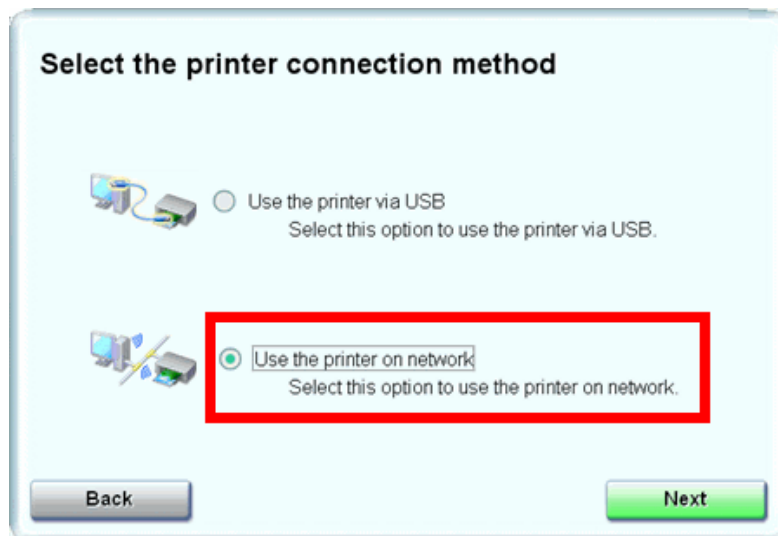
The drivers, application software, and on-screen manuals are installed.

Note: If you want to select particular items to install, click Custom Install.



Step Five

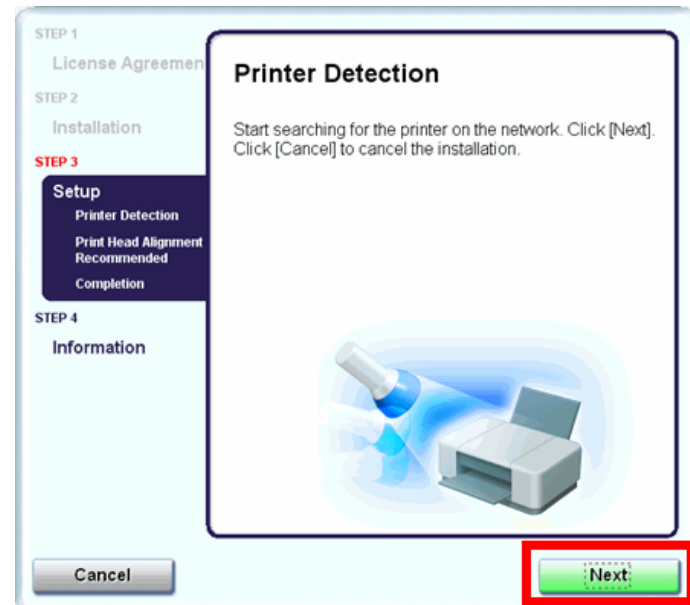
Select **Use the printer on network**, then click **Next**.



Follow any on-screen instructions to proceed with the software installation.

Step Six

When the Printer Detection screen appears, click **Next**.



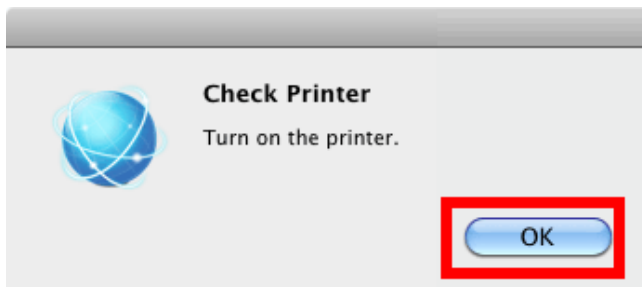
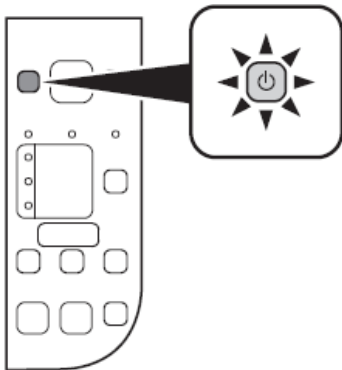
IMPORTANT

If the Printer Connection screen appears instead of the screen above, the connection method is not correctly selected in 5.

Follow on-screen instructions and proceed with the installation. Click Exit on the installation complete screen, then start again from 2 and be sure to select Use the printer on network in 5.

Step Seven

Make sure the machine is turned on, then click **OK**.



Step Eight

When the **Set Up New Printer** screen appears, click **Next**.

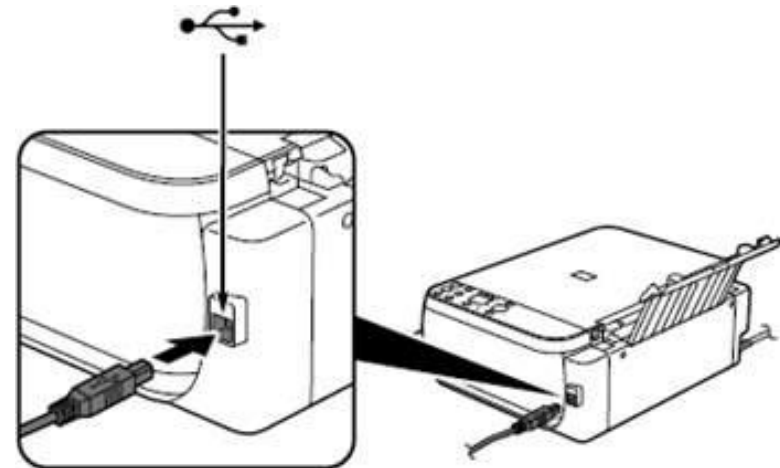
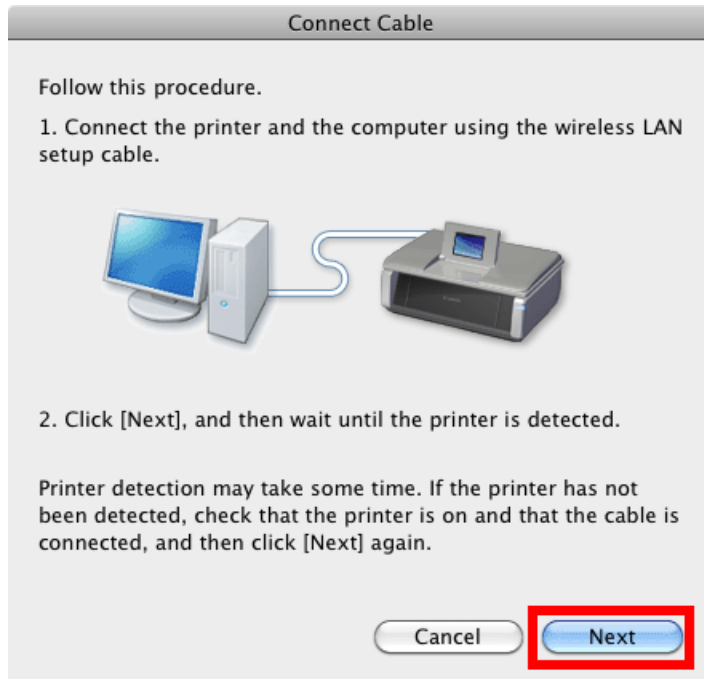


Note:

If the Detected Printers List screen appears, click Set Up New Printer.

Step Nine

When the **Connect Cable** screen appears, connect the machine to the computer with the wireless LAN setup cable. Follow the on-screen instructions and click **Next**.



Step Ten 10-A

If the **Detected Access Points List** screen appears:
If the screen below does not appear, perform **10-B**.

The screenshot shows the 'Access Points' screen with the following content:

The following access points were detected.
Select the access point to connect to, and click [Connect].

Detected Access Points:			
Level	Encryption	Access Point Name (SSID)	Channel
T	WPA	abcdefg (1)	6
T	WPA2	abcdefg	6
T	WPA	MyNetwork	11

Network Password: [.....] (2)

Buttons: Manual Setup, Cancel, Back, Connect (3)

1. Select the target access point name/network name (SSID).
2. Enter the network key.
Enter upper and lower case letters of the alphabet correctly.
Letters are case sensitive.
To use WEP key number 2, 3 or 4, click WEP Key Number, then specify the WEP key number.
3. Click **Connect**

Go to Step Eleven.

Note:

If the target access point is not displayed on the Detected Access Points List or Access Points screen, refer to the printed manual: Network Setup Troubleshooting.

For details on how to check the access point name/network name (SSID) and network key, refer to the manual supplied with your access point or contact its manufacturer.

Step Ten 10-B

If the **Confirm Connection Access Point** screen appears.



Make sure that the target access point is displayed, then click **Yes**. If a screen asking for permission to access the keychain appears, click **Allow** or **Allow Once**.

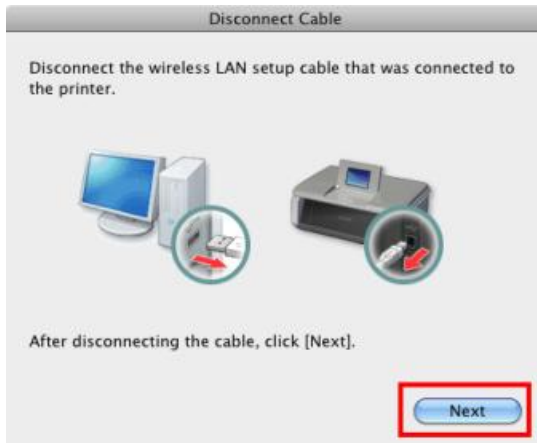


Note:

If the target access point is not displayed in the **Confirm Connection Access Point** screen, click **No**, then perform **10-A**.

Step Eleven

When the Disconnect Cable screen appears, remove the wireless LAN setup cable, then click **Next**.



Step Twelve

Click **Complete** or **OK** on the **Setup Completion** screen.



Registering the Printer & Scanner

This section describes how to register the machine on a Macintosh computer.

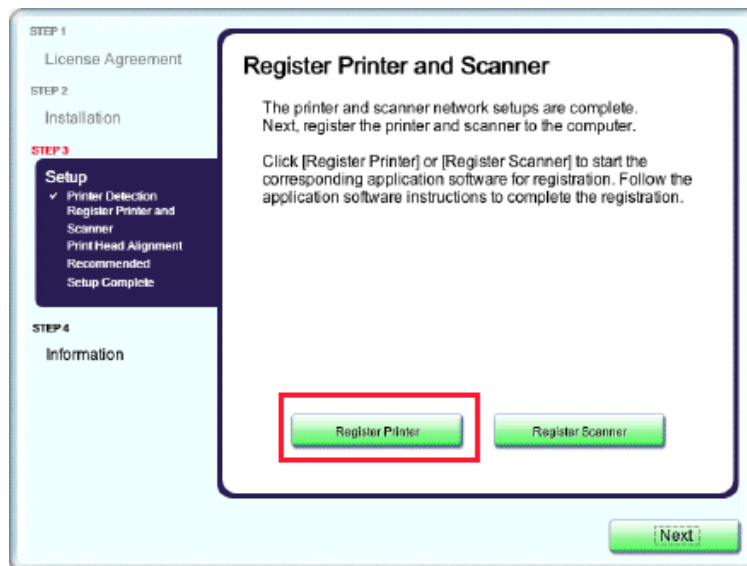
Note:

The alphanumeric characters after Canon MP499 series is the machine's Bonjour service name or MAC address. If the machine has not been detected, make sure of the following.

- The machine is turned on.
- The firewall function of any security software is turned off.
- The computer is connected to the access point.

Step One

When the Register Printer and Scanner screen appears, click **Register Printer**.



Proceed to the section that relates to your operating system for further installation instructions

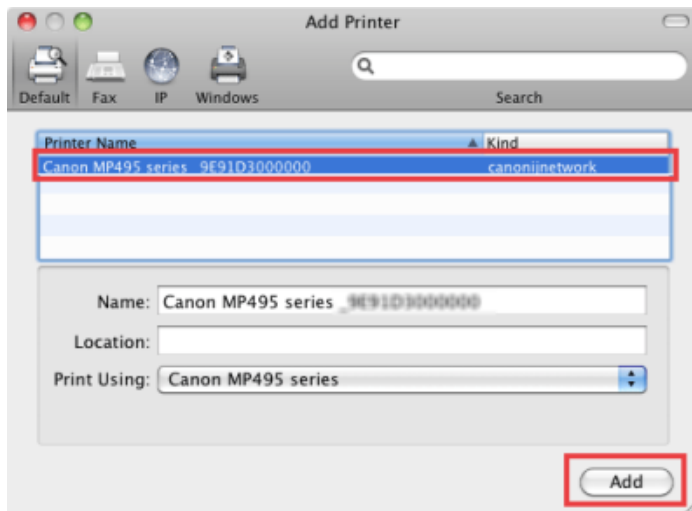
Mac OS X v. 10.5.x / 10.6.x: Go to Step **2-A**

Mac OS X v. 10.4.11: Go to Step **2-B**

Step Two

2-A

Select Canon MP499 series canonijnetwork and click **Add**.



Step Two

2-B

1. When the Printer List window appears, click **Add**.



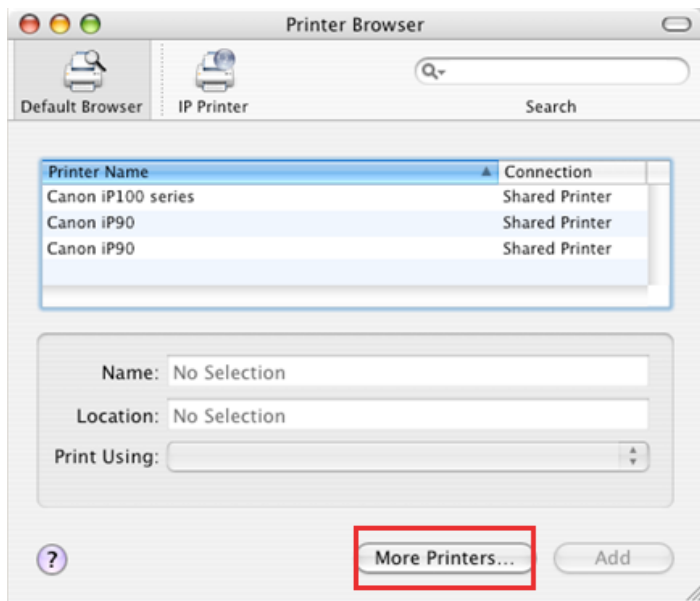
Note:

When the You have no printers available. screen appears, click **Add**.

Step Two

2-B

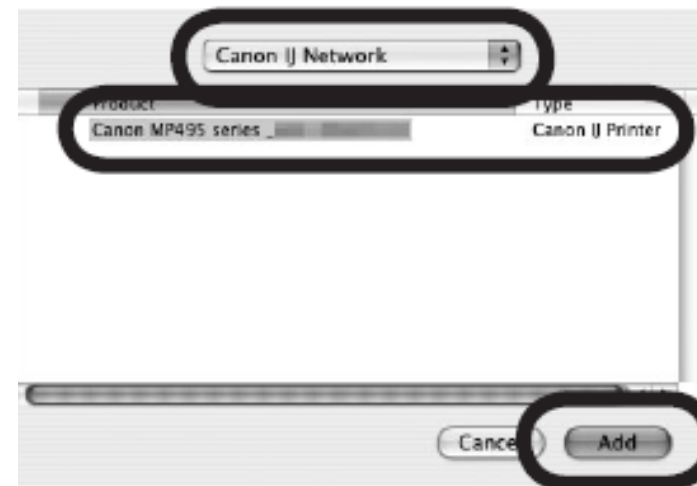
2. Click **More Printers** in the Printer Browser window.



Step Two

2-B

3. Select Canon IJ Network in the pop-up menu, select Canon MP499 series in the list of printers, then click **Add**.



Step Two

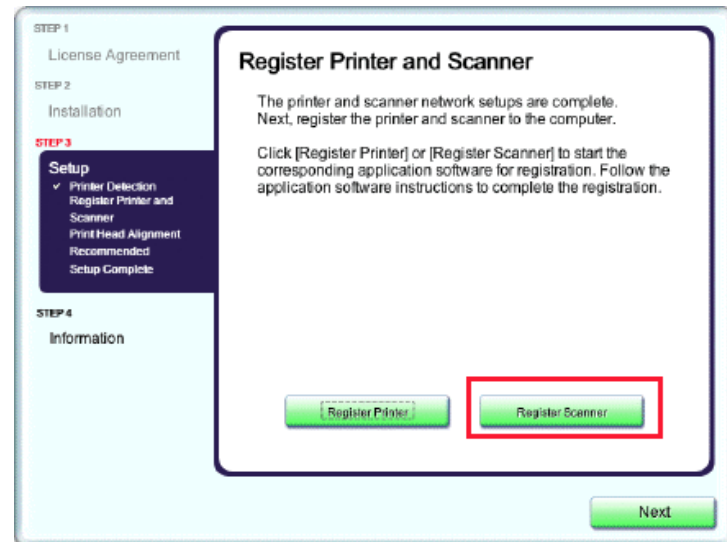
2-B

4. Make sure that Canon MP499 series is added to the list of printers.

Go to Step Three.

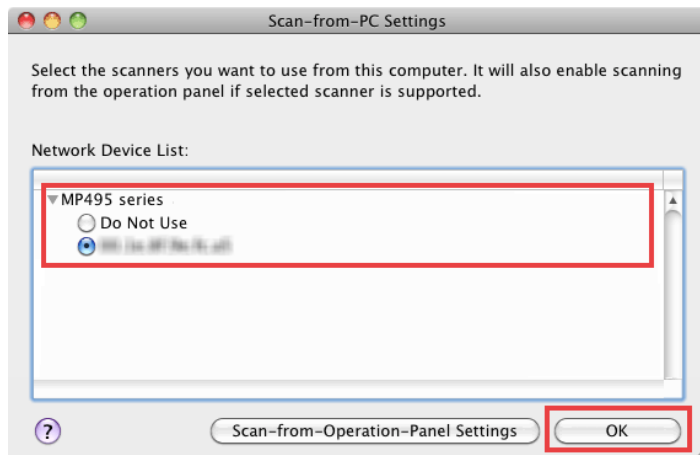
Step Three

When the **Register Printer and Scanner** screen appears, click **Register Scanner**.



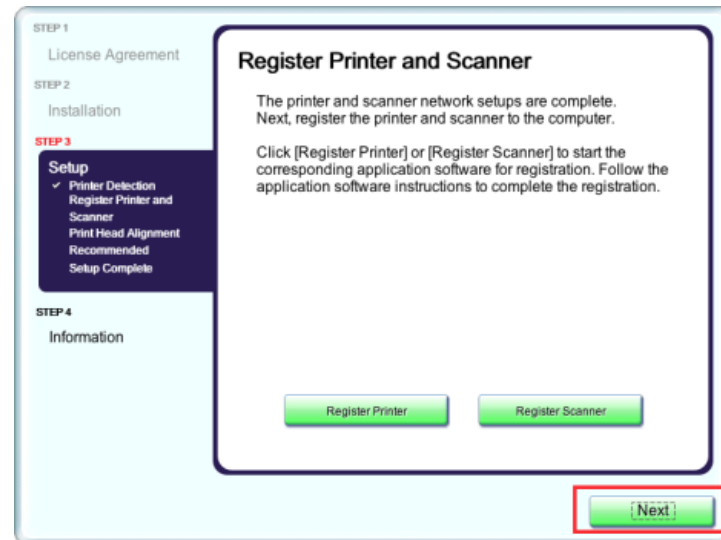
Step Four

Select **Canon MXxxx series** on the **Scan-from-PC Settings** screen, then click **OK**. *xxx refers to the model number.



Step Five

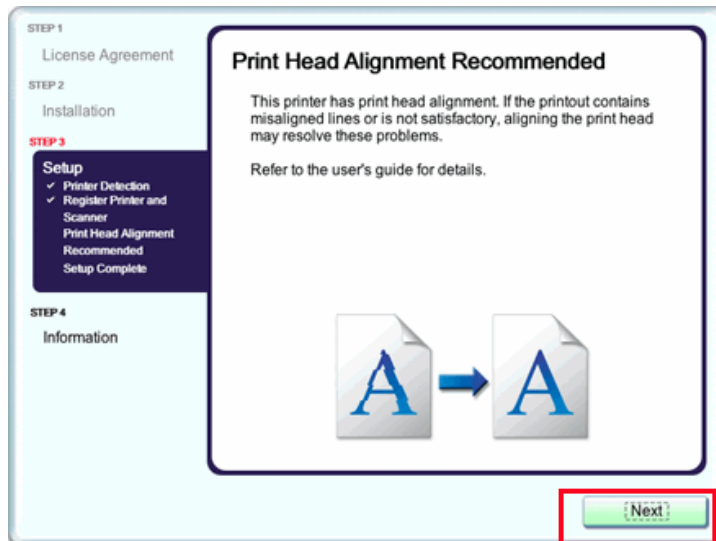
Click **Next** on the **Register Printer and Scanner** screen.



Wireless setup is now complete.

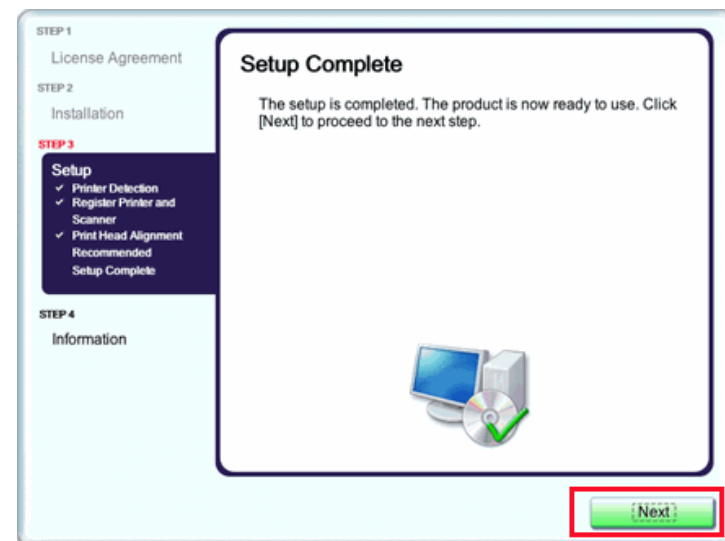
Step Six

Click **Next** on the **Print Head Alignment Recommended** screen.



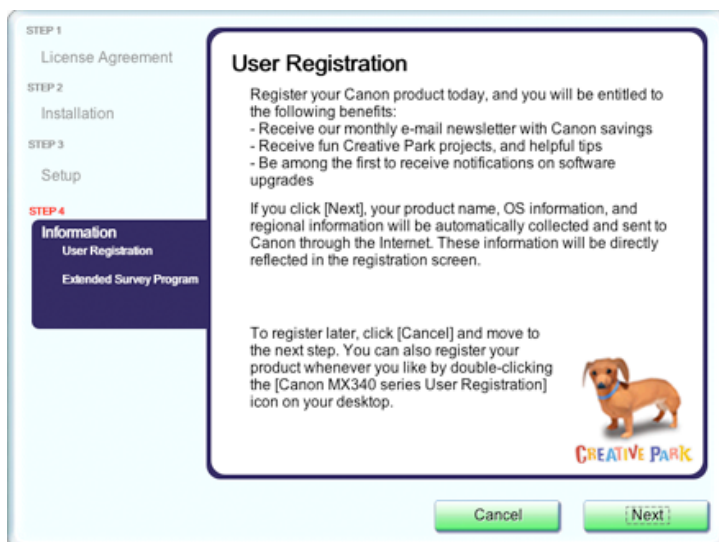
Step Seven

Click **Next** on the **Register Printer and Scanner** screen.

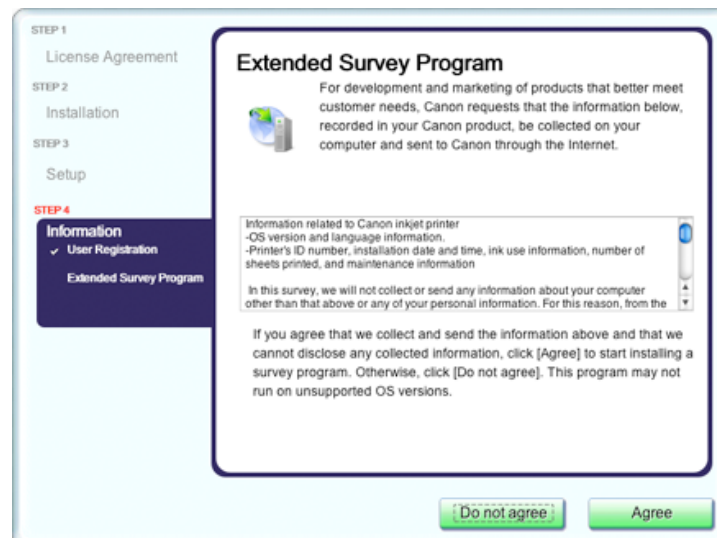


Step Eight

If the **User Registration** screen appears, read the information and click **Next** or **Cancel**.



If the **Extended Survey Program** screen appears: If you can agree to Extended Survey Program, click **Agree**. If you click **Do not agree**, the Extended Survey Program will not be installed. (This has no effect on the machine's functionality.).



Step Nine

Click **Exit**. Setup is complete



*It is necessary to restart the computer before scanning using the Operation Panel on the machine for the first time.