



Item # _____

Project _____

Model # XAL135

Product Name: PROOFER for Cadco Half Size Digital Convection Oven Models* XAF-115 & XAF-135
8 Half Size Sheet Pan Capacity



Half Size Proofer for Cadco Digital Convection Ovens *

NEW!



Model XAL135 - HALF SIZE PROOFER for Cadco Digital Convection ovens which have Dynamic Control Panel & Humidity (Current oven models XAF-115 & XAF-135)

Our proofers are made to Cadco Ltd. specifications by UNOX S.p.A., Italy ♦ NSF, UL through CSA Standards
Cadco Model XAL135 = UNOX Model XAL135

Standard Features

*** NOTE: This proofer is not a stand-alone item. It can only be run and controlled when stacked in modular configuration with a Cadco Digital Convection Oven with DYNAMIC Control Panel (Half Size Oven Models XAF-115 & XAF-135. Proofer requires a separate power outlet from the oven, but is controlled by the DYNAMIC Control Panel on the oven.)**

- Handles 8 half size sheet pans (not included) ● 2-5/8" between pan brackets
- Heat settings from 90° - 122° F
- Requires a water supply for humidity ● Water filter required - Call Cadco for current filter model
- Dimensions are designed to accommodate modular stacking for customized configuration
- NSF, UL through CSA Standards / listed by UNOX S.p.A. ● Chef Support – on-line and via phone
- **One Year On-site Warranty**
- 208-240 Volts / 1,200 Watts / 5.5 Amps / Single Phase ● NEMA 6-15P Plug
- Freight class 85 NOTE: This model must ship by truck, not UPS

Wheels Kit also available: XR621

Model	Color	Electrical			Unit Dimensions	Ship Wt./lbs.	Carton Dimensions	UPC#
		Volts	Watts	Amps				
XAL135	Yellow / Brushed Stainless	208-240	1,200	5.5	w:23-5/8", h:29-7/8", l:22-13/16"	57*	w:26", h:32", l:25-1/2"	654796-52235-4

*does not include weight of shipping skid

For more information, please contact Cadco, Ltd, 145 Colebrook River Road, Winsted, CT 06098
Tel. (860)738-2500 ♦ Fax (860) 738-9772 ♦ E-mail: info@cadco-ltd.com ♦ Web site: www.cadco-ltd.com

Due to continual product improvement, specifications and design are subject to change without notice.

11/20/2006 RV00

Cadco, Ltd. Proofer for Digital Convection Ovens - 8 half size sheet pan capacity Model # XAL135



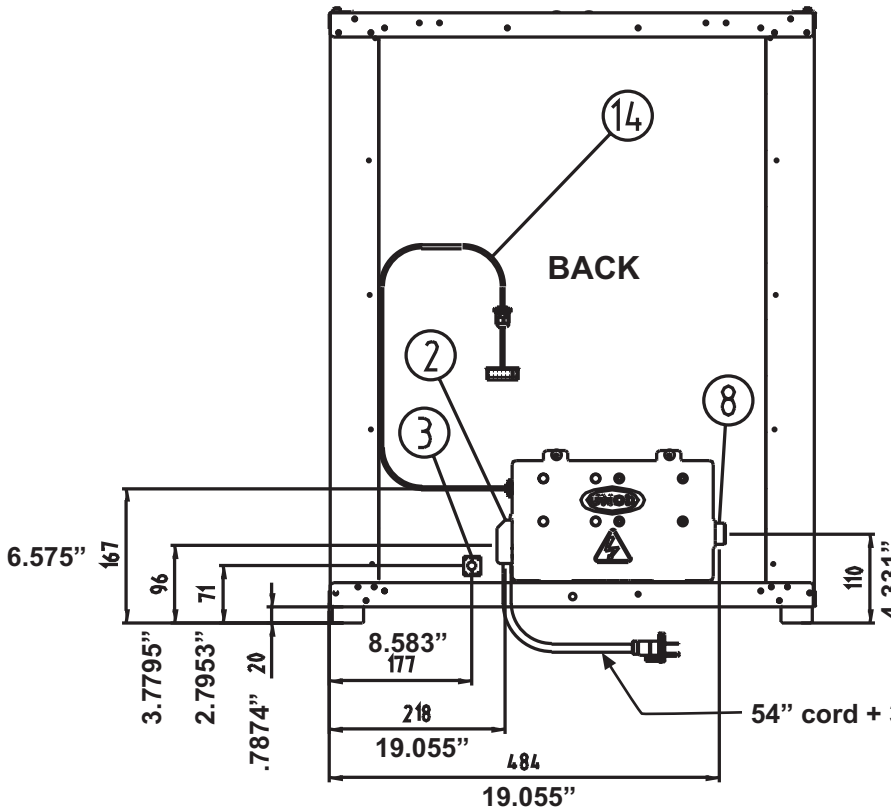
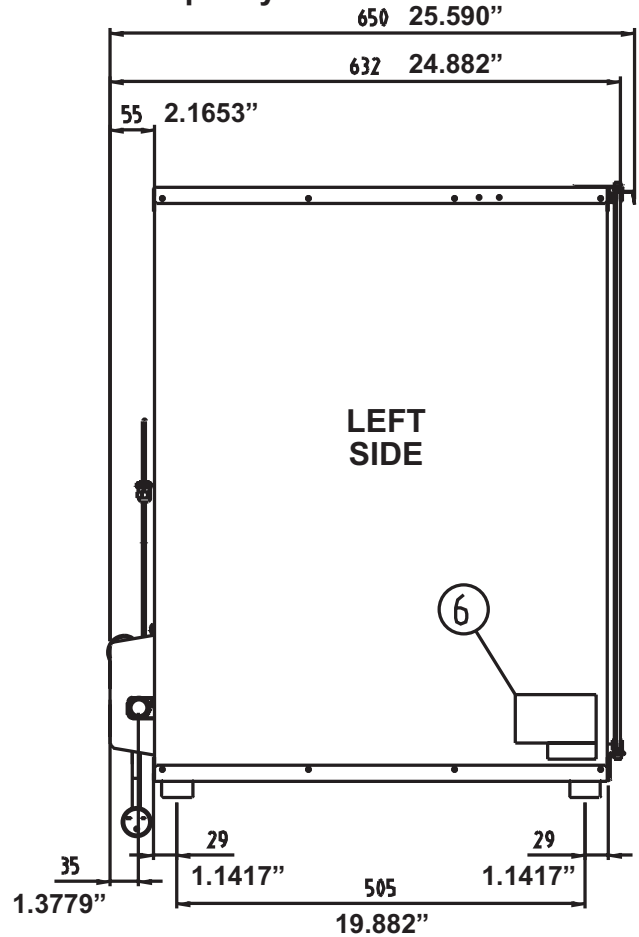
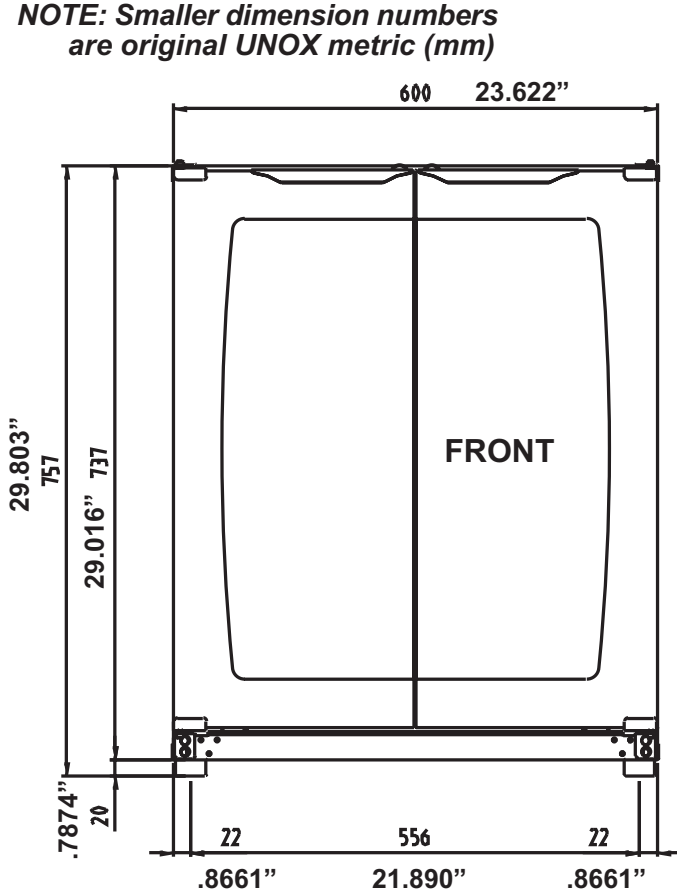
Item # _____

Project _____

Model # XAL135

Product Name: PROOFER for Cadco Half Size Digital Convection Oven
(for oven Models XAF-115 & XAF-135)
8 Half Size Sheet Pan Capacity

NOTE: Smaller dimension numbers are original UNOX metric (mm)



- CALLOUTS**
- 2. Terminal Board Power Supply
 - 3. Unipotential Terminal
 - 6. Technical Data Plate
 - 8. 3/4" Thread Water Inlet
 - 14. Oven Connection Cable (74" cable + 1-1/4" connector)

Humidity: When the "Manual" water button is pressed on the Digital Oven's Dynamic Control Panel, water is injected directly into the water reservoir in the bottom of the proofing chamber, and slowly vaporized in the warm reservoir. Water should be connected to the proofer water inlet by a mechanical filter and a cut-off valve. Water must have a pressure value between 0.5 - 5 bar (7.25 - 72.5 PSI.)