



WELLS BLOOMFIELD, LLC
 2 ERIK CIRCLE, P. O. Box 280 Verdi, NV 89439
 telephone: 775-689-5703
 fax: 775-689-5976
 www.wellsbloomfield.com

PARTS LIST

PL505

WVOC-2HFG WVOC-2HSG VENTLESS CONVECTION OVEN WITH GRIDDLE/HOTPLATE COOKTOP

CONTENTS

Description	page
Parts List	2
WVOC-2H(F)(S)G Hood Section	
Cabinet	4
Hood Electrical and Vacuum	5
WVOC-2H(F)(S)G Convection Oven Section	
Cabinet Components	6
Electrical Components	7
WVOC-2H(F)(S)G Cooktop Components	8
Ansul© Fire Detection & Suppression	9

PRINTED IN UNITED STATES OF AMERICA

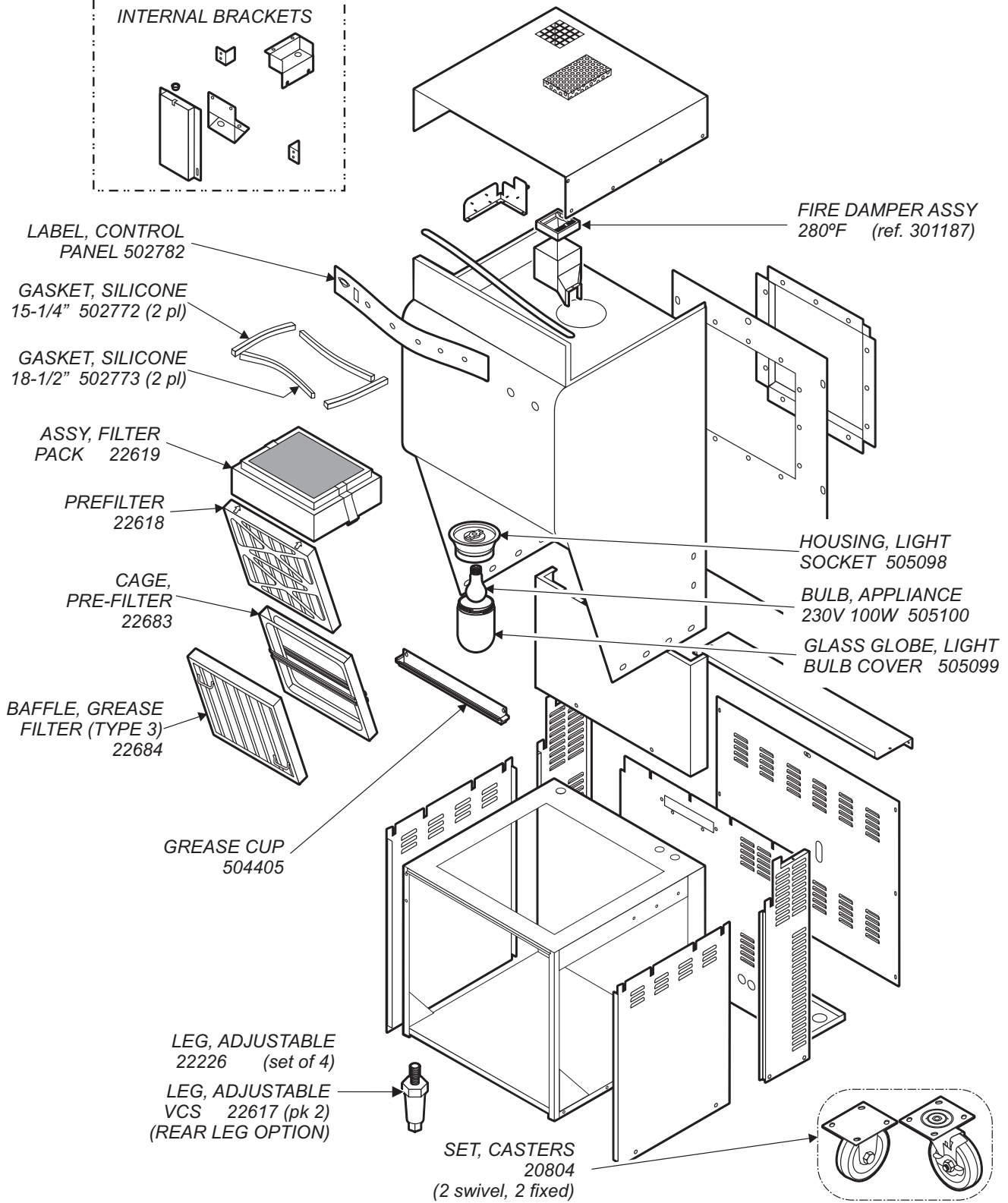
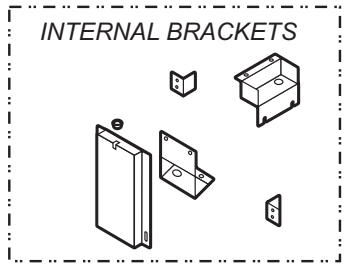
PART #	DESCRIPTION	PART #	DESCRIPTION	PART #	DESCRIPTION
OPTIONAL ACCESSORIES		MECHANICAL		MECHANICAL	
20804	SET, CASTER, (2 FIXED, 2 SWIVEL)	51968	CLAMP, ELEM CTR SMALL GRIDDLE	500356	KNOB, BLACK (NOTE: GRAY OBS)
21375	SUPPORT, OVEN RACK (M4200)	51969	CLAMP, ELEM END SMALL GRIDDLE	500984	SPACER, LATCH STRIKE PLATE
21376	RACK, OVEN (M4200)	51973	HANDLE, DOOR	501389	REMOTE PULL STA ASSY
22617	LEG, ADJ. (pk 2)	53302	SEALANT 1/4x37 LONG	501451	BKT, SOLID ELEMENT HOLD-DOWN
22618	PREFILTER	53474	CLIP, TIE-DOWN INSUL (pk 12)	501774	ASSEMBLY, GREASE DRAWER
22619	FILTER PACK	53948	PANEL, FRONT GREASE DRAWER	502588	TUBING ASSY VACUUM UNIV HOOD
22682	POWER CORD NEMA 15-60P 4'	55677	BRKT ELEM MTG RW	502772	GASKET SILICONE .25X.5X15.25
22683	CAGE, PRE-FILTER	57407	INSUL FG (1" x 2ft x 4ft)	502773	GASKET SILICONE .25X.5X18.5
22684	GREASE BAFFLE (TYPE 3)	57748	FITTING, CONDUIT STRAIGHT 3/8	502782	FACEPLATE FRNT PNL UNIV HOOD
		63738	BOOT, ROCKER SWITCH	503252	GASKET, CLOSED CELL, OVEN POT
		63787	BRACKET, PROX. SWITCH	504112	LINK, FUSIBLE TYPE B 212°F
		63797	WHEEL, BLOWER	504184	KIT, CONTROLLER SHIELD
		63804	TRIM, LOWER FRONT	504405	GREASE TRAY, HOOD DRIP
		63817	GASKET, OVEN DOOR TOP&BTM	504444	ASSEMBLY, OVEN DOOR
		63918	GASKET, OVEN DOOR SIDES	504724	OVERLAY, CONTROL PANEL OC-1
		63836	COVER, ELEM GASKET, INNER	505099	GLASS GLOBE VCS HOOD
		63837	COVER, ELEM GASKET, OUTER	505610	PIN, DOOR HINGE
		63889	CLIP, RACK SUPPORT (M4200)	505612	HANDLE, DOOR (M4200)
		63896	DOOR HINGE, BOTTOM ASSY	505615	ASSEMBLY, DOOR LATCH
LITERATURE & DOCUMENTATION		63899	PLATE, DOOR PIVOT	505616	STRIKER, DOOR LATCH
302731	PLUMBING LAYOUT, VAC	63900	SLEEVE, DOOR HINGE	505619	BUSHING, UPPER DOOR HINGE
302796	GLD VENTLESS SYS WOV-2HG	63948	MAGNET, PERMANENT OVEN DOOR		
302874	ANSUL FIRE SUPPRESSION SYS	65278	ASSEMBLY, GREASE TRAY		
304350	INSTR INSTALL LEGS	65644	KNOB, BLACK LLSC		
304906	DIA WIRING WVOC-2HG 208/240V 3P	65647	SHIELD, PROX. SWITCH		
304963	OPMANUAL WVOC-2HG-SERIES	65653	KNOB, OVEN CONTROLLER		
304982	SCHEMATIC WIRING WVOC	67439	KNOB OC-1 RS		
SV505	SERVICE MANUAL WVOC-2HG	68746	ADAPTER BAYONET 3/8-24x7/8		
		68989	GASKET, CLOSE CELL (rl 50ft)		

PL505 Service Parts List for WVOC-2H Ventless Cook Center

PART #	DESCRIPTION	PART #	DESCRIPTION
ELECTRICAL		HARDWARE	
50131	TERMINAL BLOCK 3P 85A	51053	NUT, 8-32 KEPS SS (pk 100)
50293	ELEM, SPIRAL HOTPLATE 240V	51038	RETAINER TRADEMARK (pk 10)
50496	ELEM, GRIDDLE 240V 2250W	51040	GROMMET INSULATION 7/8D HEYCO
50516	LIGHT, INDICATOR AMBER 240V	51053	NUT, 8-32 KEPS (pk 100)
50562	INF. SWITCH 240V HOTPLATE	51717	SCREW, 8-32x7/8 (pk 40)
50516	LIGHT, SIGNAL AMBER 240V	51718	SCREW, 6-32x3/16 (pk 10)
51157	LIGHT, INDICATOR RED 240V	52428	SPRING, HEAD SUPPORT ROD
52054	JUMPER, ELEM SHORT GRIDDLE	53890	SCREW, 12-24x3/4 (pk 10)
53068	TERMINAL BLOCK 2P (FIRE ALARM)	53935	SCREW 6X1/4 SHEET METAL (pk 100)
54005	JUMPER, FLAME SENSOR	53977	SCREW, 8-32x3/8PHBD (pk 100)
54769	FUSEHOLDER HPA-EE 10A 240V	54136	FTG FLEX COND 90DEGx1/2IN
54871	FUSE SC-10 (pk 4)	54222	WASHER FLAT #10
55697	LIGHT, INDICATOR GREEN 240V	54284	RIVET, POP 3/32Dx1/8
60877	LIGHT, SIGNAL WHITE 240V	54285	SCREW, 8-32x3/8 (pk 50)
63738	BOOT, ROCKER SWITCH	55135	SCREW, 6-32x1/4 RD (pk 25)
63783	ELEMENT, OVEN INNER 240V	55485	NUTS, 1/4-20 (pk 100)
63800	ELEMENT, OVEN CENTER 240V	55487	SCREW, 8-32x11/16 (pk 50)
63880	RELAY, 208/240V	55530	SCREW, 8-32x3/8 (pk 100)
63932	MOTOR, OVEN 1/4HP 208/230V 2SPD	55565	WASHER 2-1/4 DRWR BACK RWS
64514	RELAY, BLDG FIRE ALARM	55566	SCREW, 6x1/4 SS (pk 100)
64834	BUZZER 240V	55736	NUT, 8-32 KEPS GREEN (pk 10)
65180	THERMO, SNAP-DISC	57748	FTG CONDUIT STRAIGHT 1/2IN
65239	PROXIMITY SWITCH, OVEN	60612	SCREWS, 1/4-20x1/2
65651	SWITCH, DPDT 250V 15A	60680	NUTS, 10-32 KEPS SS (pk 10)
65846	CONTROLLER 400°F GRIDDLE	61262	RIVET 1/8X1/4SS ROLL WRMR (pk 50)
67273	SWITCH ELECTRIC (FIRE ALARM)	61974	NUT, 8-32x7/8 LONG AL (pk 10)
69623	PROBE, TEMP 1/4 TURN GRIDDLE	62504	CLAMP BULB SAFETY (pk 4)
69823	CAPACITOR, MOTOR START	63271	CLIP RETAINER PILOT LIGHT (pk 10)
500407	SWITCH FILTER INTERLOCK	65405	SPACER DRWR STOP SS RWS
502584	ASSY, BLOWER FAN & MOTOR	500102	STRAIN RELIEF
502590	VACUUM SWITCH #1	504420	STRAIN RELIEF 1 1/4NPT
502591	VACUUM SWITCH #2	18-302	NUT, 8-32 HEX SS
502592	VACUUM SWITCH #3	8543-74	NUT, 4-40 HEX SS
502593	VACUUM SWITCH #4		
502789	CONTACTOR 208/240V 3ø 50A		
503973	ELEMENT, SOLID HOTPLATE 240V		
504712	PROBE, TEMP OVEN		
504713	CONTROLLER TIME/TEMP OVEN		
504892	E-SAFE RELAY 208/240V 40A		
505098	HOUSING, LIGHT SOCKET		
505100	LIGHT BULB APPLIANCE 230V 100W		
8528-40	SWITCH, POWER (NO LIGHT)		

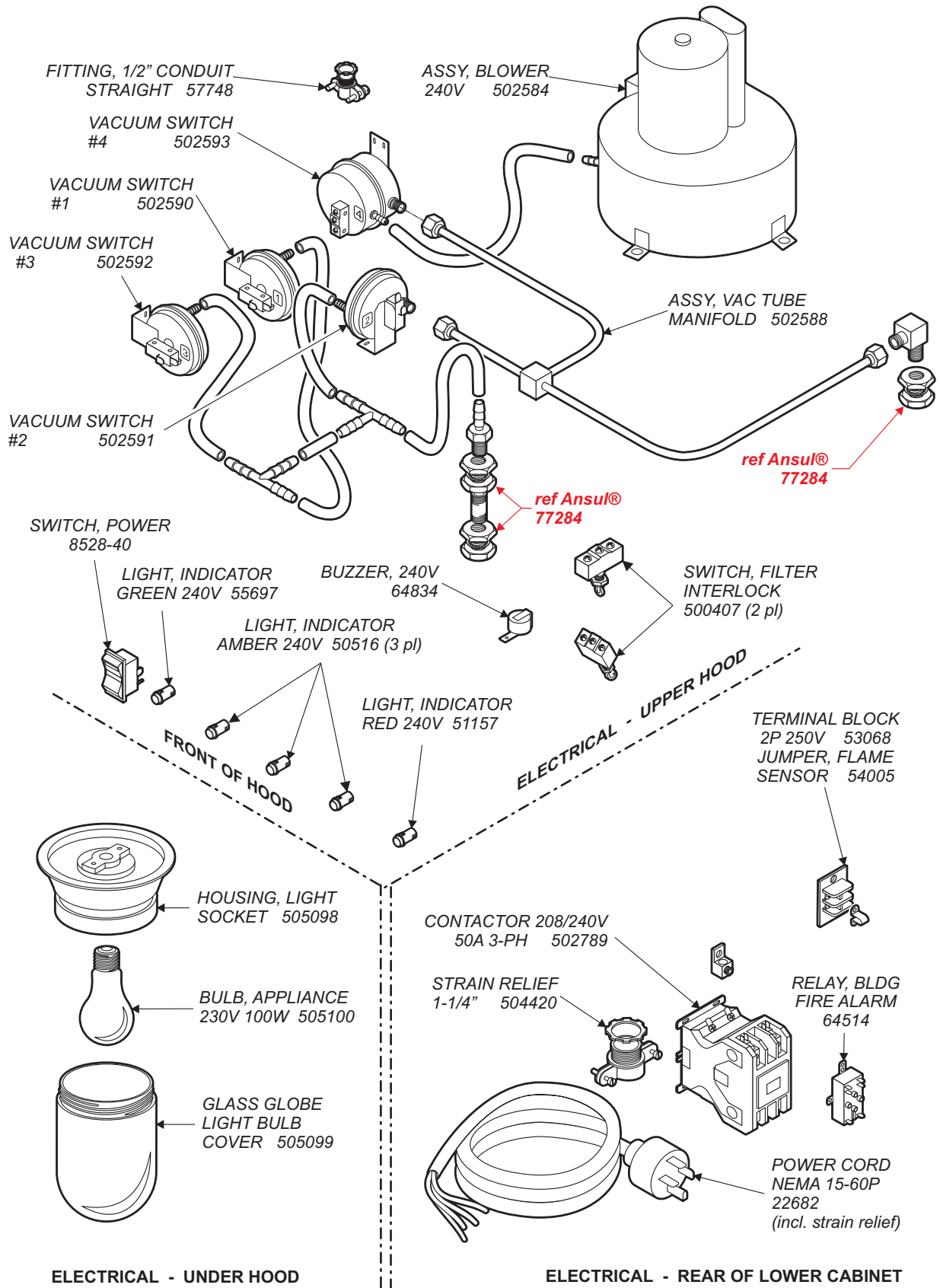
PART #	DESCRIPTION
ANSUL® COMPONENTS	
<p><i>NOTE: Provided for reference only All servicing of the fire detection and suppression system must be performed by an authorized Ansul technician</i></p>	
53068	TERMINAL BLOCK 2P (no Ansul p/n)
67273	SWITCH ELECTRIC (Ansul p/n 423575)
501389	ASSY, PULL STATION ANSUL® (Ansul p/n 4835)
502583	FUSIBLE LINK 165°F Model K (no Ansul p/n)
504112	FUSIBLE LINK 212°F Type B (no Ansul p/n)
	CABLE, WIRE ROPE , 50 FT/15m (Ansul p/n 15821)
	ANSULEX® FIRE EXTINGUISHING MEDIA, 1.5 GAL. (Ansul p/n 79694)
	EXPELLANT GAS CARTRIDGE ASSY LT-20-R (Ansul p/n 67099)
	QUICK-SEAL ADAPTER, 3/8" (Ansul p/n 77284)
	QUICK-SEAL ADAPTER, 1/4" (Ansul p/n 78195)
	MOUNTING BRACKET, RELEASE MECH. R-102 (Ansul p/n 79493)
	CABLE, WIRE ROPE , 500 FT/152m (Ansul p/n 79653)
	<u>DESIGN, INSTALLATION, RECHARGE AND MAINTENANCE MANUAL FOR R-102 RESTAURANT FIRE SUPPRESSION SYSTEM (STD. UL 300 LISTED) (Ansul p/n 418087-05)</u>
	NOZZLE 1W (Ansul p/n 419336)
	NOZZLE 290 (Ansul p/n 419342)
	PULLEY ELBOW, COMPRESSION ENDS (Ansul p/n 423250)
	TANK, 1.5 GAL ANSULEX® (Ansul p/n 429864)

WVOC-2H... CABINET AND HOOD SECTION COMPONENTS



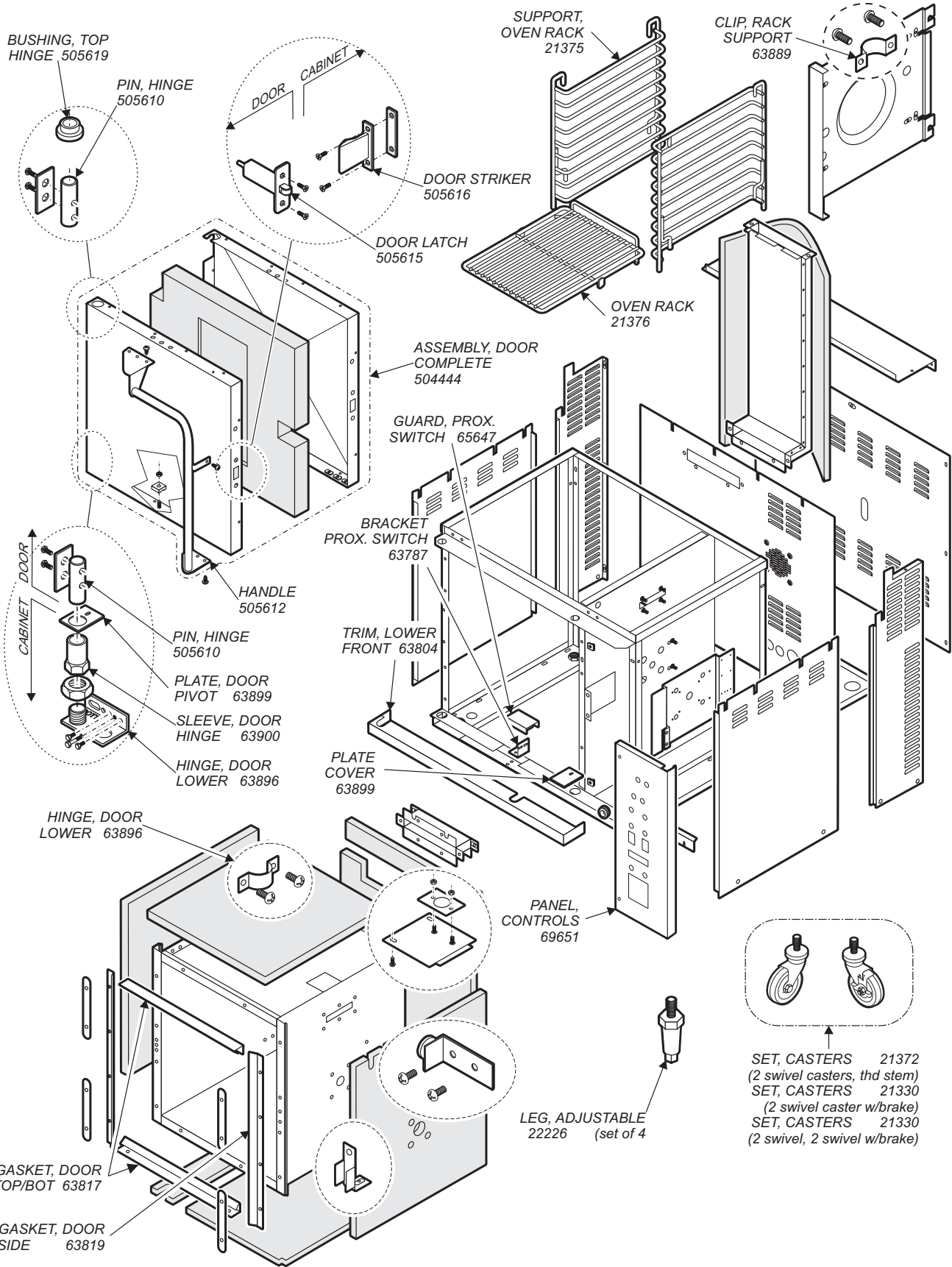
PL505 Service Parts List for WVOC-2H Ventless Cook Center

WVOC-2H... HOOD ELECTRICAL AND VACUUM COMPONENTS



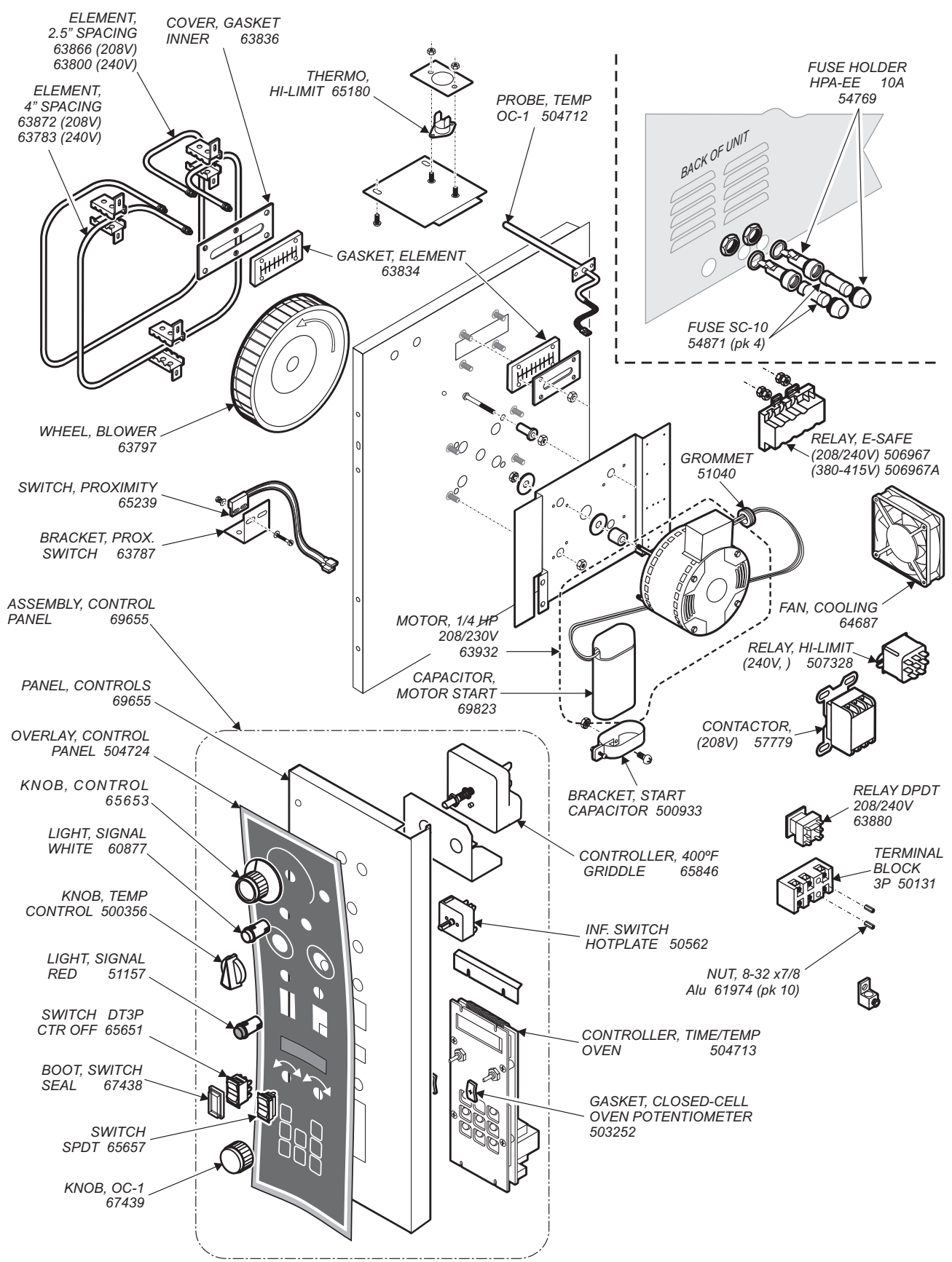
PL505 Service Parts List for WVOC-2H Ventless Cook Center

WVOC-2H... CONVECTION OVEN CABINET COMPONENTS



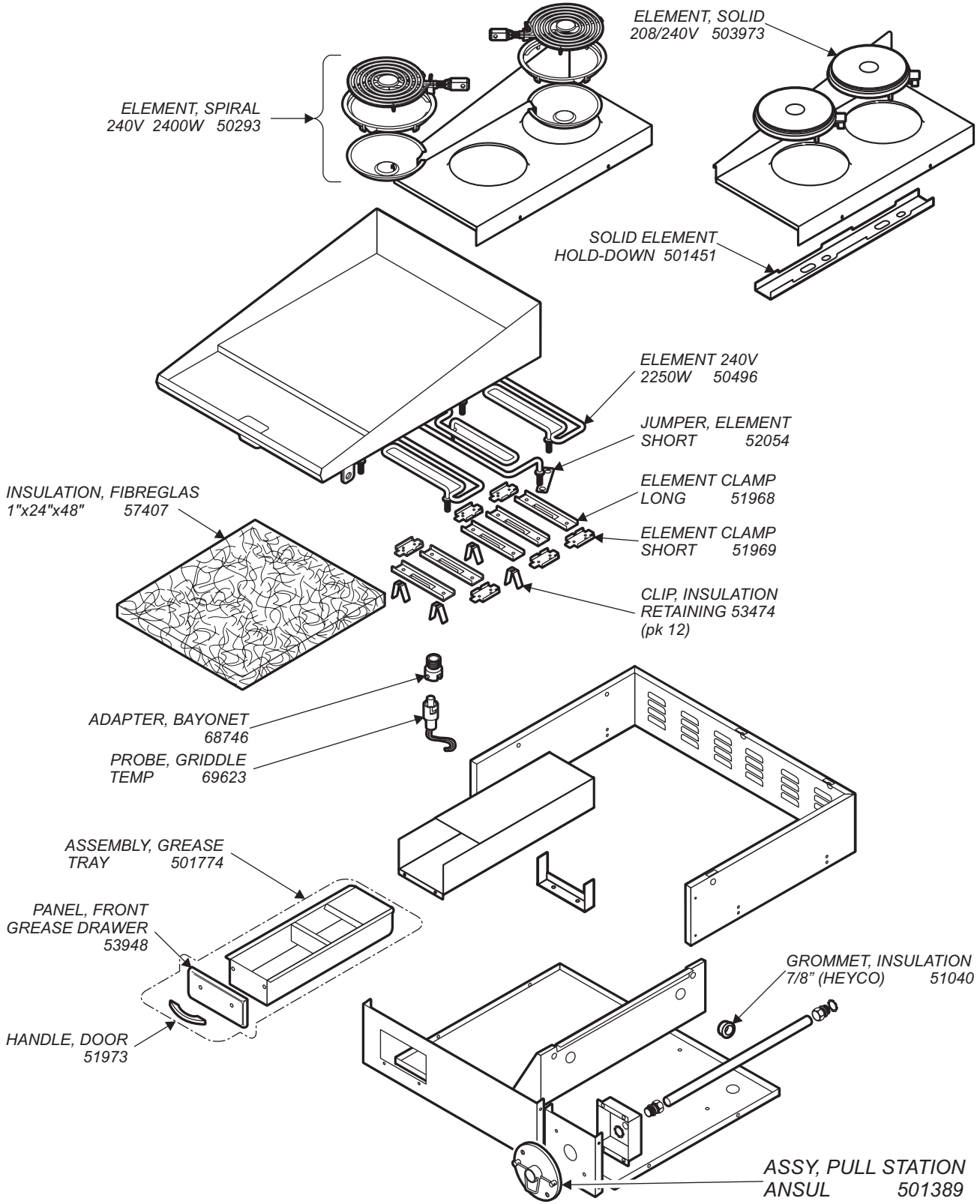
PL505 Service Parts List for WVOC-2H Ventless Cook Center

WVOC-2H... CONVECTION OVEN ELECTRICAL COMPONENTS



PL505 Service Parts List for WVOC-2H Ventless Cook Center

WVOC-2H... COOKTOP COMPONENTS

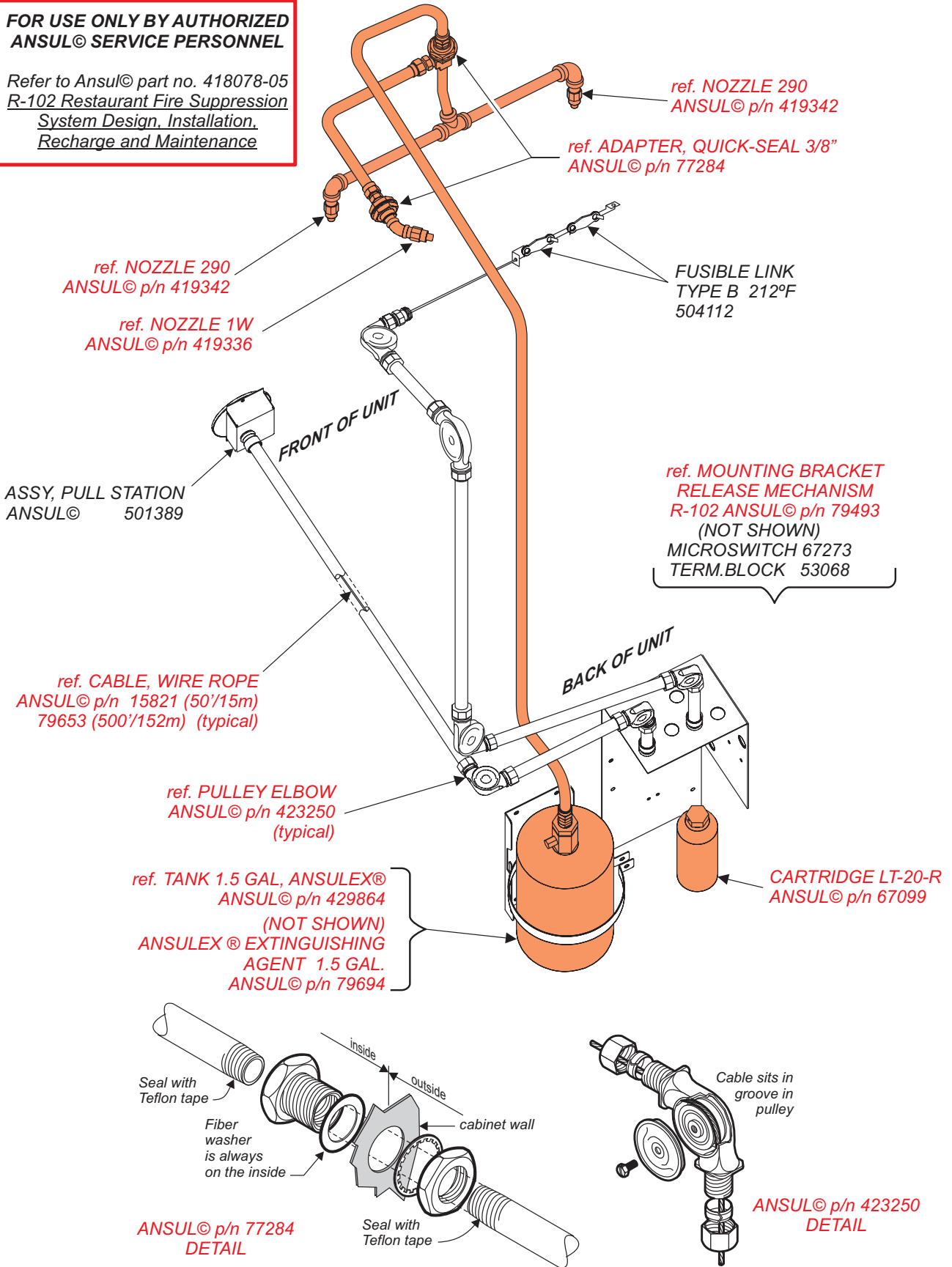


PL505 Service Parts List for WVOC-2H Ventless Cook Center

WVOC-2H... FIRE DETECTION AND SUPPRESSION SYSTEM COMPONENTS

**FOR USE ONLY BY AUTHORIZED
ANSUL® SERVICE PERSONNEL**

Refer to Ansul® part no. 418078-05
R-102 Restaurant Fire Suppression
System Design, Installation,
Recharge and Maintenance



PL505 Service Parts List for WVOC-2H Ventless Cook Center



Wells Bloomfield proudly supports CFESA
Commercial Food Equipment Service Association

SERVICE TRAINING - QUALITY SERVICE



CUSTOMER SATISFACTION



WELLS BLOOMFIELD, LLC
2 ERIK CIRCLE, P. O. Box 280 Verdi, NV 89439
telephone: 775-689-5703
fax: 775-689-5976
www.wellsbloomfield.com

PRINTED IN UNITED STATES OF AMERICA