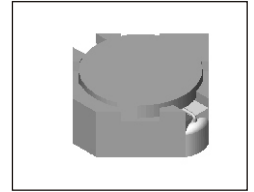


SMT Power Inductor

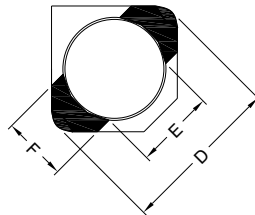
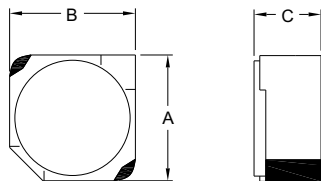
SILM4018H Type

Features

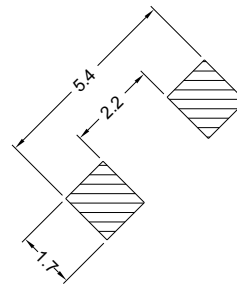
- RoHS compliant.
- Low profile (1.8mm max. height) SMD type.
- Magnetically shielded, suitable for high density mounting.
- Self-leads, suitable for high density mounting.
- High energy storage and low DCR.
- Provided with embossed carrier tape packing.
- Ideal for power source circuits, DC-DC converter, DC-AC inverters inductor applications.
- In addition to the standard versions shown here, customized inductors are available to meet your exact requirements.



Mechanical Dimension:



RECOMMENDED PAD PATTERNS



UNIT:mm/inch
 A = 4.0 / 0.157 Max.
 B = 4.0 / 0.157 Max.
 C = 1.8 / 0.071 Max.
 D = 4.8 / 0.189 Max.
 E = 2.9 / 0.114
 F = 1.0 / 0.039

Electrical Characteristics: 25°C: 100KHz, 0.1V

PART NO.	L ¹ (uH)	DCR (mΩ) MAX	Isat ² (Adc)	I _r ³ (Adc)
SILM4018H - 1R7	1.7	51	2.00	2.40
SILM4018H - 2R2	2.2	59	1.75	2.30
SILM4018H - 3R3	3.3	85	1.40	1.80
SILM4018H - 4R7	4.7	116	1.20	1.50
SILM4018H - 6R8	6.8	180	1.00	1.10
SILM4018H - 100	10.0	230	0.84	1.00
SILM4018H - 150	15.0	410	0.65	0.75
SILM4018H - 220	22.0	610	0.55	0.52
SILM4018H - 330	33.0	870	0.46	0.41

1. Tolerance of inductance: ±30% for 1.7~6.8uH; ±20% for 10~33uH.
2. Isat is the DC current which cause the inductance drop 35% typical of its nominal inductance without current.
3. Ir is the DC current which cause the surface temperature of the part increase less than 45°C.
4. Operating temperature : -20°C to 105°C (including self-temperature rise).



DELTA ELECTRONICS, INC.

(TAOYUAN PLANT CPBG) 252, SAN YING ROAD, KUEISAN INDUSTRIAL ZONE, TAOYUAN SHIEN, 333, TAIWAN, R.O.C.

TEL: 886-3-3591968; FAX: 886-3-3591991

<http://www.deltawww.com>