



PT1510MX
Touchscreen LCD Monitors

USER'S GUIDE

www.planar.com

The information contained in this document is subject to change without notice.
This document contains proprietary information that is protected by copyright. All rights are reserved. No part of this document may be reproduced, translated to another language or stored in a retrieval system, or transmitted by any means, electronic, mechanical, photocopying, recording, or otherwise, without prior written permission. Windows is a registered trademark of Microsoft, Inc.
Other brand or product names are trademarks of their respective holders.

Important Recycle Instruction:


 LCD Lamp(s) inside this product contain mercury. This product may contain other electronic waste that can be hazardous if not disposed of properly. Recycle or dispose in accordance with local, state, or federal Laws. For more information, contact the Electronic Industries Alliance at WWW.EIAE.ORG. For lamp specific disposal information check WWW.LAMPRECYCLE.ORG.

Table of Contents

Usage Notice

<i>Precautions</i>	2
--------------------------	---

Introduction

<i>About Planar's PT1510MX</i>	3
<i>Touch Screen for PT1510MX</i>	4
<i>Package Overview</i>	5

Installation

<i>Product Overview</i>	6
<i>VESA Mount your monitor</i>	9
<i>Start Your Installation</i>	10


User Controls


<i>Front Panel Controls</i>	14
<i>How to Use the OSD Menus</i>	15
<i>On-Screen Display Menus For PT1510MX Product</i>	16

Appendices

<i>Troubleshooting</i>	17
<i>Warning Signal</i>	18
<i>Product Dimensions</i>	19
<i>Compatibility Modes</i>	20
<i>Touch Screen Driver Installation</i>	21

Usage Notice

 **Warning-** To prevent the risk of fire or shock hazards, do not expose this product to rain or moisture.

 **Warning-** Please do not open or disassemble the product as this may cause electric shock.

Precautions

Follow all warnings, precautions and maintenance as recommended in this user's manual to maximize the life of your unit.

Do:

- Turn off the product before cleaning.
- Touch screen surface may be cleaned using a soft clean cloth moistened with mild window glass commercial cleaners or 50/50 mixture of water and isopropyl alcohol.
- Use a soft cloth moistened with mild detergent to clean the display housing.
- Use only high quality and safety approved AC/DC adapter that comes with your monitor.
- Disconnect the power plug from AC outlet if the product is not going to be used for an extended period of time.

Don't:

- Do not touch the LCD Display screen surface with sharp or hard objects.
- Do not use abrasive cleaners, waxes or solvents for your cleaning.
- Do not operate the product under the following conditions:
 - Extremely hot, cold or humid environment.
 - Areas susceptible to excessive dust and dirt.
 - Near any appliance generating a strong magnetic field.
 - In direct sunlight.

Introduction

About Planar's PT1510MX

The PT1510MX is a 15" flat panel screen with an active matrix, thin-film transistor (TFT) liquid crystal display (LCD).

Features include:

- ❑ Direct Analog signal input
- ❑ Active matrix TFT LCD technology
- ❑ 1024x768 XGA resolution
- ❑ 15" diagonal screen size
- ❑ 31.5 ~ 60 kHz horizontal scan
- ❑ 56 ~ 75 Hz high refresh rate
- ❑ Auto adjustment function
- ❑ Multilingual OSD user controls
- ❑ VESA DPMS power saving
- ❑ Kensington security slot
- ❑ Built-in speakers for multimedia application
- ❑ 75 mm VESA mount
- ❑ Removable base for flexible mounting solutions
- ❑ Gunze 5-wire Resistive touch screen with dual RS-232 Serial/USB controller
- ❑ Built-in Speakers – 1W/channel

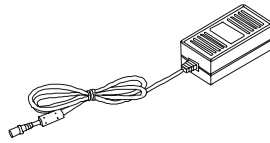
Touch Screen for PT1510MX

- ❑ Gunze analog 5-wire resistive touch screen for finger and stylus input
- ❑ Surface: Anti-glare treatment
- ❑ Interface: Dual RS-232 Serial/USB controller
- ❑ Durability: 35 million touches at a single point
- ❑ Hardness of surface: 2H MIN (As provided in JIS K 5400)
- ❑ Operating force: 0.10~1.96N(10g~200g when using a silicon tipped pen with a 3 mm radius and a hardness of 60 degree.)
- ❑ Transmissivity: 78% (Typ.)
- ❑ Driver: Gunze® Touch Panel Device Driver: TBDD. Supports Microsoft Windows® Me. 2000. XP

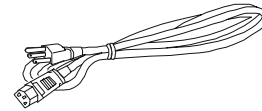
Package Overview



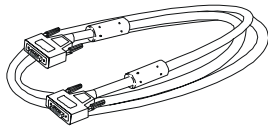
LCD Display



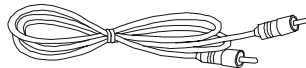
Power Adapter



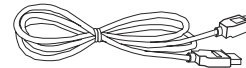
Power Cord



VGA Signal Cable



Audio-in Cable



USB Cable



RS-232 Cable



Landing Strip



Touchscreen Driver
Installation CD-ROM

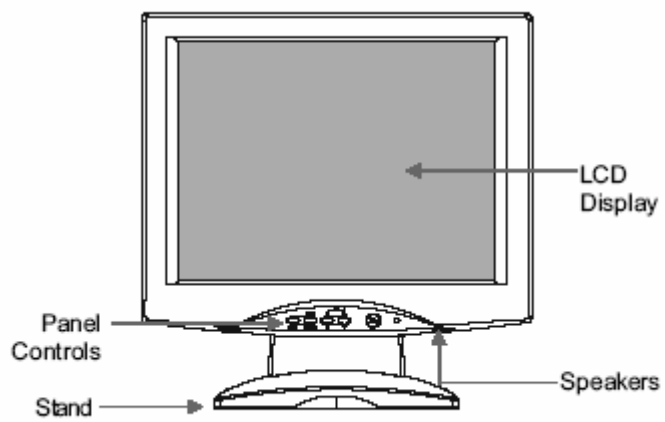


User's Guide

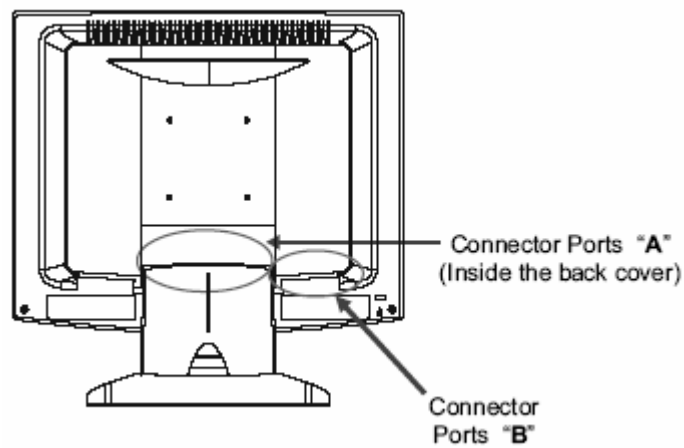
Installation

Product Overview

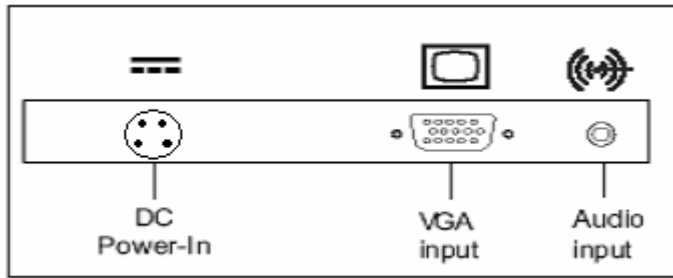
◆ Front View



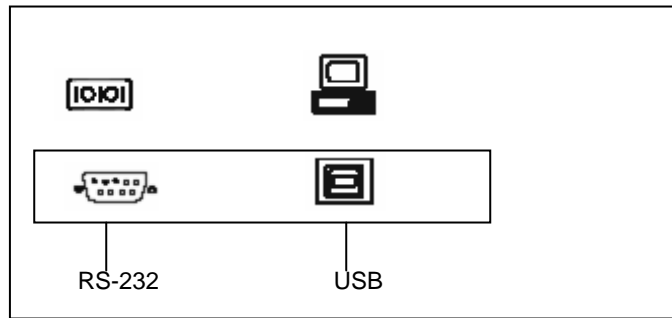
◆ Back View



◆ Connector Ports “A”

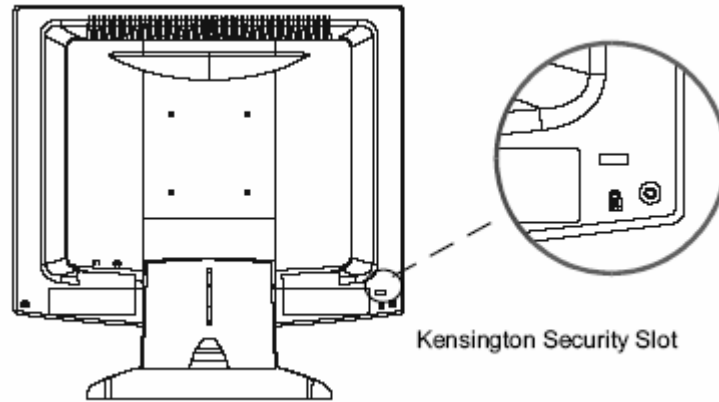


◆ Connector Ports “B”



◆ Kensington Security Slot

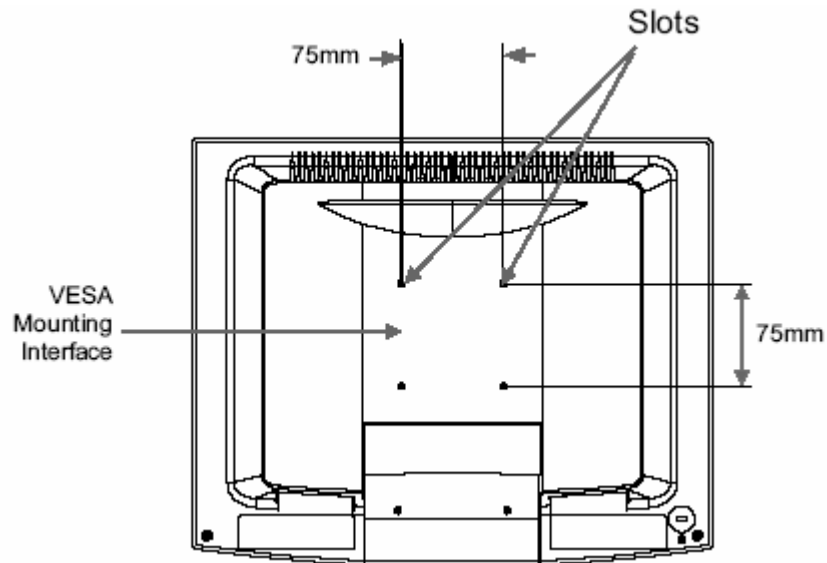
The monitor can be secured to your desk or any other fixed object with Kensington lock security products. The Kensington lock is not included.



VESA Mount your monitor

This monitor conforms to the VESA Flat Panel Mounting Physical Mounting Interface Standard which defines a physical mounting interface for flat panel monitors, and corresponding standards for flat panel monitor mounting devices, such as wall and table arms. The VESA mounting interface is located on the back of your monitor.

To mount the monitor on a swing arm or other mounting fixture, follow the instructions included with the mounting fixture to be used.



Warning!

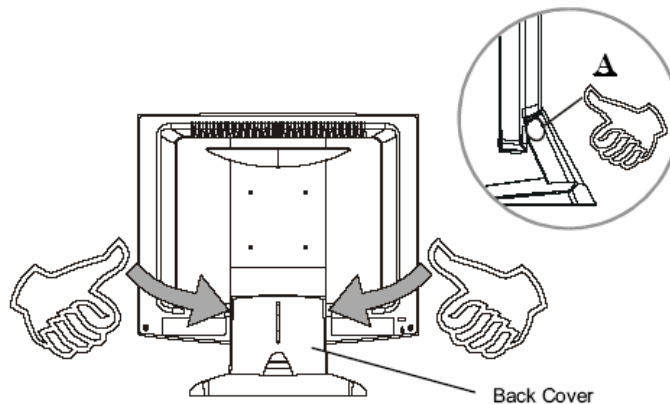
Please select the proper screws!

The distance between the back cover surface and the bottom of the screw hole is 8mm. Please use M4 screw diameter with a maximum length of 8 mm.

Start Your Installation

◆ Remove the Back Cover

Please follow these instructions to remove the cover on the back panel of the LCD so that you can connect the cables in “Connector Ports B.”



1. To remove the back cover, follow the arrows in Figure A and press with both your thumbs. The cover should be removed by pressing firmly along the edges while pulling on the cover.
2. Follow the instructions on P. 11 (Figure 11.1) to connect the cables in “Connector Ports B.”
3. Fix the cover back to the LCD by pressing firmly until the tabs snap into place. You may also keep the cables in order by using the cable organizer.



⚠ Note!

You can place the LCD flat horizontally to make it easier to connect the cables. Please make sure that you place it on an even surface lest the LCD should be damaged by scratches or collision.

◆ Connecting the Display (Figure 11.1, 11.2)

To setup this display, please refer to the following figure and procedures.

1. Be sure all equipment is turned off.
2. Connect the DC power cord to the power connector on the monitor; plug one end of the AC power cord into the power adapter, and the other end into an electrical outlet (11.1 ❶).
3. Connect the VGA signal cable from the display's VGA input connector to the 15-pin connector of your host computer and tighten the screws (11.1 ❷).
4. Connect the Audio-In cable from the audio input port of your display to the Audio-out port of your computer (11.1 ❸).
5. Connect the RS-232 or USB cable from the RS-232 or USB port of your display to the RS-232 port (11.1 ❹) or USB port (11.2 ❺) of your computer.
6. Configure the touch screen. Refer to the "Touch Screen Driver Installation" section on P. 21.
7. Once the touch screen is configured, monitor is ready for use.

Notice!

To ensure the LCD display works well with your computer, please configure the display mode of your graphics card to make it less than or equal to 1024 x 768 resolution and make sure the timing of the display mode is compatible with the LCD display.

We have listed the compatible "Video Modes" of your LCD display in the appendix for your reference.

Figure 11.1

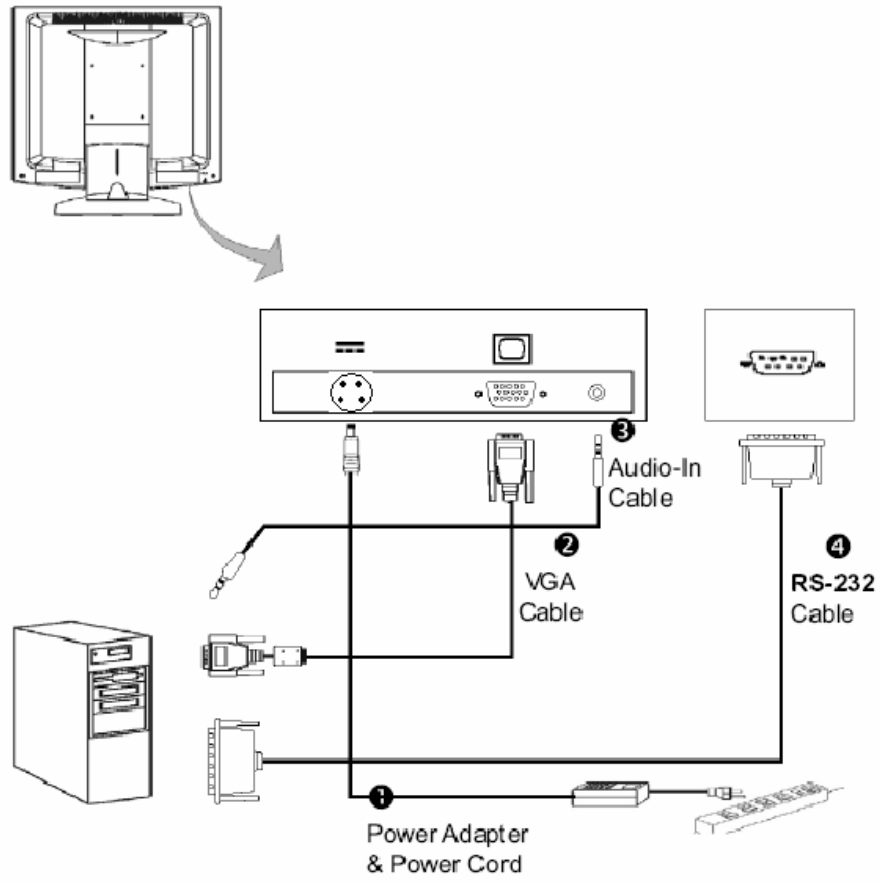
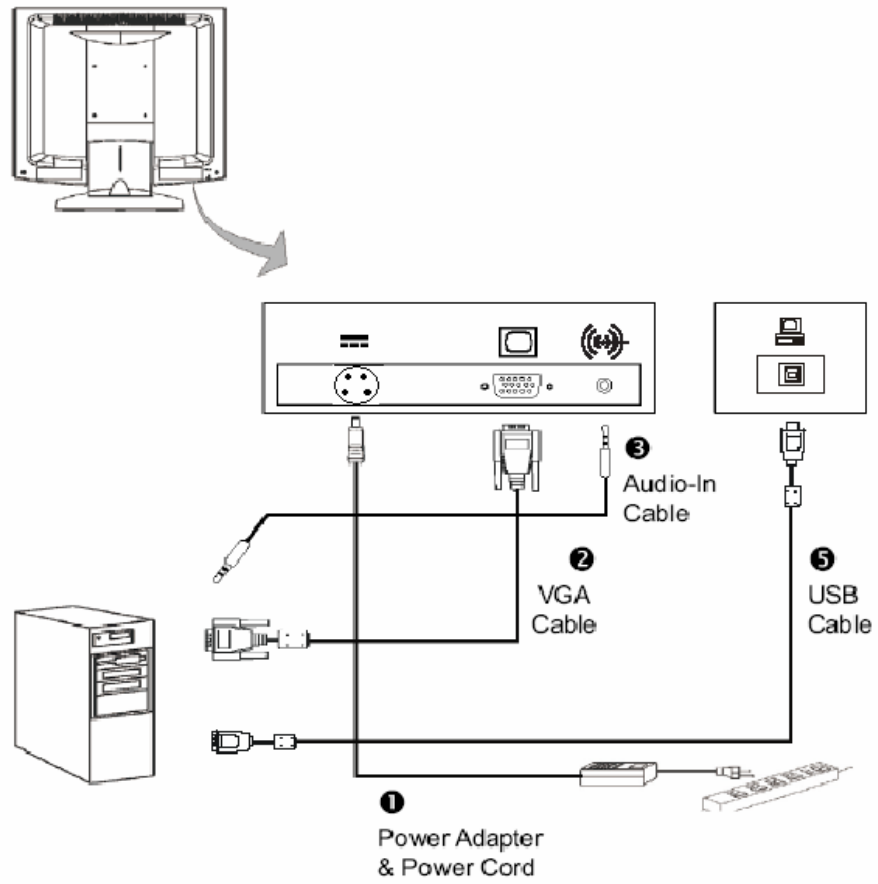
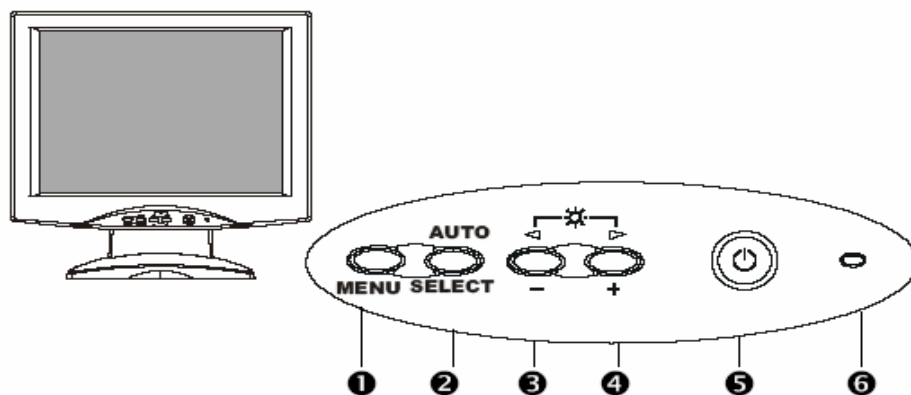


Figure 11.2



User Controls

Front Panel Controls



No / Icon	Control	Function
1 MENU	Menu button	Display the OSD menus
2 SELECT/AUTO	Select/Auto	Select – To select the adjustment items from OSD menus. Auto – To activate the “Auto Adjustment” function to obtain an optimum image.
3 ◀	Brightness Minus/Minus	1. Decreases the brightness of the display image. 2. Decreases value of the adjustment items.
4 ▶	Brightness Plus/Plus	1. Increases the brightness of the display image. 2. Increases value of the adjustment items.
5 ⏻	Power Switch	Switches on/off the power of the LCD display.
6	Power LED	1. Green indicates the display is turned on. 2. Amber indicates the display is in power-saving mode.

How to Use the OSD Menu

1. Press the "MENU" button to pop up the "on-screen menu" and to select among the four Main Menus.
2. Choose the adjustment items by pressing the "Select/Auto" button.
3. Adjust the value of the adjustment items by pressing the "◀" or "▶" button.
4. The OSD menu will automatically close, if you have left it idle for a pre-set time.

On-Screen Display Menus for the PT1510MX Product

Main Menu	Menu Level 2	Function Description	Remark
Brightness		Choose this function to adjust the brightness of the image.	Default 30
Contrast		Choose this function to adjust the contrast of the image.	Default 40
LCD Adjustment	Clock	Minimizes any vertical bars or stripes visible on the screen.	
	Phase	Minimizes any horizontal distortion and clears or sharpens the displayed characters.	
	H. Position	Changes the horizontal position of the image.	
	V. Position	Changes the vertical position of the image.	
Color Temperature		Opens the color temperature sub-menu where you can select the desired color temperature of the image. (SRGB / 9300K / 7200K / 6500K / 5000K / USER)	Default is 7200K
ECO mode		Enables or disables the power savings mode. (On/Off)	
Language		Opens the language sub-menu where you can select the desired language of the OSD.	
Other Setup	Smooth	Adjusts the smoothness of the image.	
	OSD H. Position	Changes the horizontal position of the OSD.	
	OSD V. Position	Changes the vertical position of the OSD.	
	OSD Transparency	Changes the opaqueness of the OSD background.	
	OSD Time out	Adjusts the amount of time the OSD menu will be displayed for after inactivity.	Default 30
	Volume	Adjusts the sound volume.	Default 50
	Mode Message	Enables or disables the display of information.	
	Reset	Resets the display parameters back to its factory default settings.	
Exit		Exit the OSD menu.	

Appendix

Troubleshooting

If you are experiencing trouble with the LCD display, refer to the following. If the problem persists, please contact your local dealer or our service center.

Problem: No image appears on screen.

- ▶ Check that all the I/O and power connectors are correctly and well connected as described in the "Installation" section.
- ▶ Make sure the pins of the connectors are not crooked or broken.

Problem: Partial Image or incorrectly displayed the image.

- ▶ Check to see if the resolution of your computer is higher than that of the LCD display.
- ▶ Reconfigure the resolution of your computer to make it less than or equal to 1024 x 768.

Problem: Image has vertical flickering line bars.

- ▶ Use "Clock" to make an adjustment.
- ▶ Check and reconfigure the display mode of the vertical refresh rate of your graphic card to make it compatible with the LCD display.

Problem: Image is unstable and flickering

- ▶ Use "Phase" to make an adjustment.

Problem: Image is scrolling

- ▶ Check and make sure the VGA signal cable (or adapter) is securely connected.
- ▶ Check and reconfigure the display mode of the vertical refresh rate of your graphics card to make it compatible with the LCD Display.

Problem: Vague image (characters and graphics)

- ▶ Use "Clock" to make an adjustment. If this problem still exists, use "Phase" to make an adjustment.

Warning Signal

If you see warning messages on your LCD screen, this means that the LCD display cannot receive a clean signal from the computer graphics card.

There may be two sources for this problem. Please check the cable connections or contact Planar for more information.

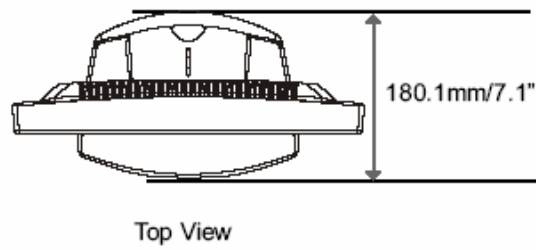
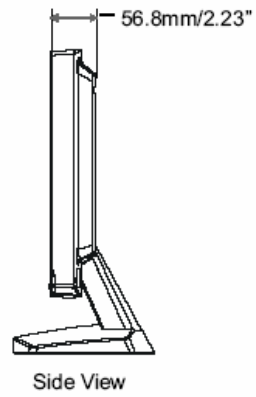
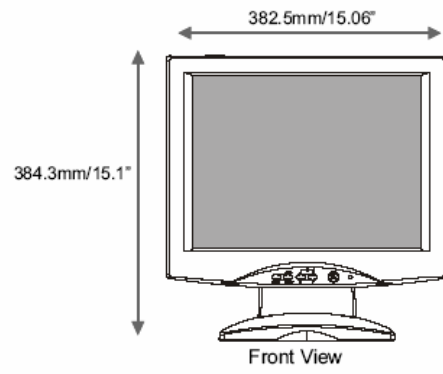
▶ **No Signal**

This message means that the LCD Display has been powered on but it cannot receive any signal from the computer graphics card. Check all the power switches, power cables, and VGA signal cable.

▶ **Out of Range**

This message means that the signal of the computer graphic card is not compatible with the LCD display. When the signal is not included in the "Video Modes" list we have listed in the Appendices of this manual, the LCD display will display this message.

Product Dimensions



Compatibility Modes

Mode	Resolution	V. Frequency (Hz)	H. Frequency (kHz)
IBM VGA	640 x 350	70	31.5
IBM VGA	640 x 400	70	31.5
IBM VGA	720 x 400	70	31.5
IBM VGA	640 x 480	60	31.5
VESA VGA	640 x 480	72	37.9
VESA VGA	640 x 480	75	37.5
VESA SVGA	800 x 600	56	35.2
VESA SVGA	800 x 600	60	37.9
VESA SVGA	800 x 600	72	48.1
VESA SVGA	800 x 600	75	46.9
VESA XGA	1024 x 768	60	48.4
VESA XGA	1024 x 768	70	56.5
VESA XGA	1024 x 768	75	60.0
Apple Mac LC	640 x 480	67	34.9
Apple Mac II	640 x 480	67	35.0
Apple Mac	832 x 624	75	49.7
Apple Mac	1024 x 768	75	60.2

Touch Screen Driver Installation

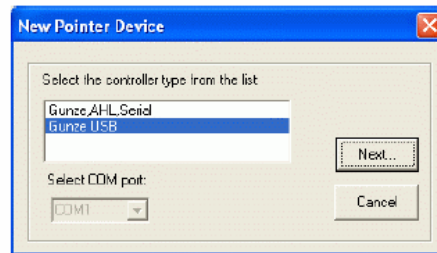
The touch driver is located on the enclosed CD-ROM for these operating systems: Windows Me/2000/98/XP series.

Driver Installation Process:

1. Before you start to install the touch driver, please be sure the USB or the RS-232 Serial cable is disconnected from the PC or the LCD display. Select Setup.exe
2. Follow driver installation instructions.
3. After installation is complete, click Finish” and restart your computer to complete installation.

Touch Panel Setting and Calibration:

1. After restarting your Windows, click “start” on the Windows toolbar.
2. Select “All Programs” and select “Gunze TPDD”.
3. Select “Adjust Settings”.
4. Select “Devices” tab and click “Add”.
5. Select “Gunze USB” if using a USB cable to connect between the monitor and PC from the **New Pointer Device** menu.



See Figure 1

6. For RS-232 Serial connection select “Gunze, AHL, Serial” and the COM port to connect to the touch panel. See Figure 2

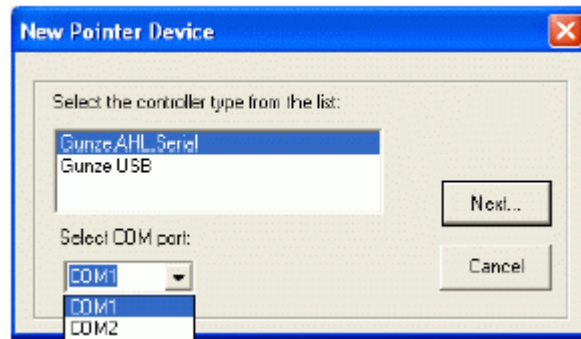


Figure 2

7. The operation area of the touchscreen can be assigned by the “Logical desktop segment” function. Select your preference. Most common choice will be “Whole Desktop” or “Primary Monitor” if you have multiple monitors. See Figure 3

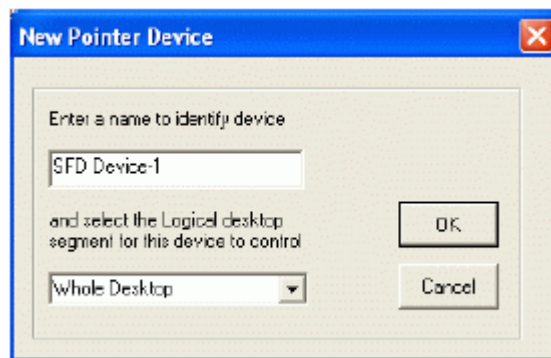


Figure 3

8. The Touch Panel Device Properties screen appears again. Click “Apply”. See Figure 4.

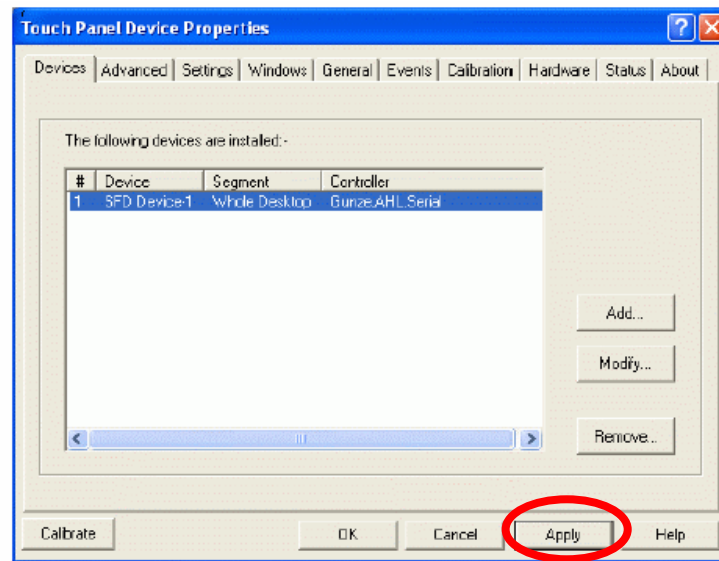


Figure 4

9. After clicking "Apply" connect your USB or RS-232 cable from your display to your PC.
10. Steps 11-14 apply to USB connection only. For Serial connection go to Step 15.
11. "Found New Hardware Wizard" screen will appear. Follow on screen instructions.
12. When the "Hardware Installation" screen appears, click "Continue Anyway".
13. "Found New Hardware Wizard" screen re-appears in the case of MS operating system Windows XP SP2. Choose "No, not this time" and click "Next".
14. "Found New Hardware Wizard" screen appears. Click "Finish".
15. From the MS Windows Tool Bar Select "Start". Select "Programs" and select "Gunze TPDD" and select "Calibrate". See Figure 5.

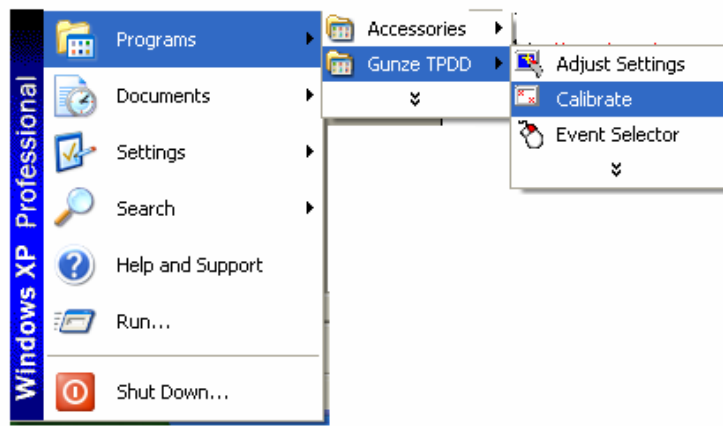


Figure 5

16. Make contact with the "X" markings on the screen. Be sure your stylus or finger is centered on each "X" point See Figure 6

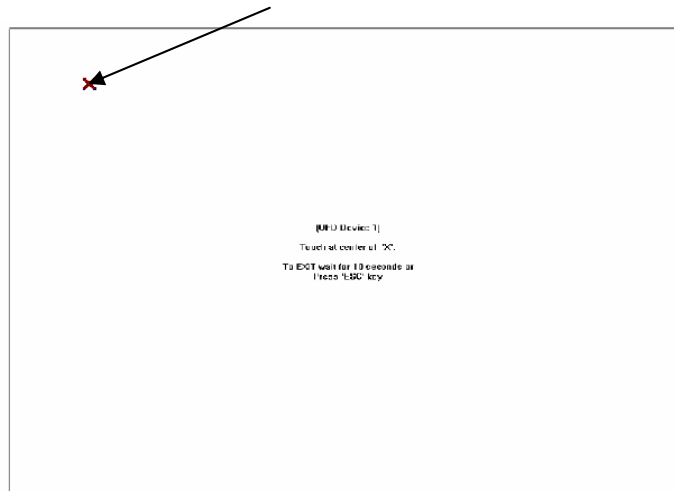


Figure 6

17. Your touchscreen is now calibrated and is ready for operation.

Uninstall Instructions

1. Click “start” in the Windows toolbar.
2. Select “Gunze TPDD” and select “TPDD Uninstall”.
3. Follow instructions.
4. Alternate method of uninstall is to use Windows “Control Panel”.
5. Select “Add or Remove Programs”.
6. Select “Gunze TPDD” and click “Change/Remove”.
7. Follow instructions.

Planar Systems, Inc

Customer service

OnlineSupport: <http://www.planar.com/support>

Email: PlanarSupport@planar.com

Tel: 1-886-PLANAR-1 (1-886-752-6271)

Hours: M-F, 8am-8pm Eastern Time (5am-5pm Pacific Time)

© 2006 **Planar Systems, Inc. 05/06** Planar is a registered trademark
of Planar System, Inc.

Other brands and names are the property of their respective owners.

Technical information in this document is subject to change without notice.

P/N:36.57724G001 Rev.A

020-0454-00A