

SETTING UP YOUR GATEWAY MONITOR



1 Connect your monitor to your computer

Follow the instructions that came with your computer.



2 Plug in the monitor

To protect your monitor from power fluctuations, use a surge protector.



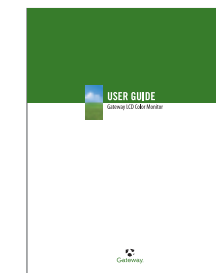
3 Turn on the monitor



Getting Help

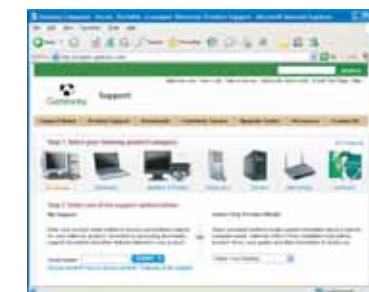
See your documentation

Refer to the documentation that came with your monitor or go to gateway.com to get the online documentation.



Check Gateway Support

For frequently-asked questions, setup help, and immediate information on common technical issues, go to gateway.com



Connecting Your Flat Panel LCD Speaker Bar*

1 Tilt the screen back, center the speaker bar below the screen, then tighten the thumb screws.



2 Connect the USB power cord to a USB port on your computer.



3 Connect the speaker bar's headphone and microphone cables to your computer, then turn on the speaker.



* Available at www.gateway.com © 2005 Gateway, Inc. All rights reserved. Gateway is a trademark or registered trademark of Gateway, Inc. in the U.S. and other countries. Product specifications subject to change without notice. Actual product may vary from image shown.



MAN FPD2085/2185 POSTER R2 12/05

