

Interactive Touchscreen User Guide

For serial Interface



Interactive Touchscreen User Guide

For use with models:
42LM4WPTC
42LM5WPTC
42LM4RTC
42LM5RTC

Version 1.3 September 2007

TABLE OF CONTENTS

ABOUT THIS MANUAL.....	4
CONTACT INFORMATION.....	4
SHIPPING DAMAGE/UNPACKING	4
CARE AND CLEANING OF THE TOUCHSCREEN.....	4
INTRODUCTION	5
COMPATIBILITY.....	5
INSTALLATION	6
LOADING THE TOUCH DRIVER SOFTWARE ONTO PC	6
STARTING THE DRIVER CONTROL PROGRAM.....	7
CONFIGURING THE COMMUNICATIONS PORT	7
EXPLANATION OF THE STATUS SECTION	8
ADJUSTING THE TOUCH SENSITIVITY LEVEL	10
CALIBRATION.....	12
SETTING THE TOUCH OUTPUT TO SUIT THE APPLICATION PROGRAM	13
DIAGNOSTICS AND FREQUENTLY ASKED QUESTIONS	15
MONITOR MODE	16
USING EDGE ENHANCEMENT	17
DELAYED STARTING OF THE DRIVER OUTPUT	17
FAULT FINDING GUIDE.....	18
DRIVER DOES NOT SEE THE TOUCHSCREEN	18
TOUCHSCREEN PERFORMS BADLY NEAR THE EDGES OF THE DISPLAY	18
FALSE TOUCHES.....	18
FAILURE TO SEE TOUCH EFFECT	18
MOUSE MOVEMENT IS NOT SMOOTH.....	18
CHANGES TO THE DRIVER ARE NOT BEING SAVED	18
MOUSE CURSOR MOVES RANDOMLY OR SEEMS STUCK.....	18
PROBLEMS WITH WINDOWS™ AUTOMATICALLY RUNNING THE DRIVER FROM START-UP ..	18
SLOW TOUCH SCREEN RESPONSE WHEN USING POWER HUNGRY APPLICATIONS.....	18
CHECK OR CHANGE THE VIRTUAL MEMORY SETTINGS	19
DRIVER PRIORITY CHANGE	19

ABOUT THIS MANUAL

This manual is intended as a reference guide for the **Interactive Touchscreen** running under Windows XP™ or Windows Vista™.

This User Manual provides the information needed to set up the touchscreen. In addition, this manual describes basic technical information about the touchscreen and troubleshooting.

CONTACT INFORMATION

If you have any questions or issues, please contact your original equipment supplier

SHIPPING DAMAGE/UNPACKING

Every precaution is taken in testing and packing this monitor prior to shipment.

On delivery of the monitor, check the shipping carton for damage. If any damage is seen that could have caused damage to the contents, keep all packing materials for later inspection by the carrier who are responsible for any shipping damage.

CARE AND CLEANING OF THE TOUCHSCREEN

Thorough cleaning of the touch screen should be performed regularly in order to assure optimum performance.

The touch screen surface should be kept free of dust, dirt, fingerprints and other foreign material as contamination of the screen can affect its optical properties such as brightness and clarity of image.

Use a soft, clean, slightly damp cloth with any commercially available window cleaner for cleaning the glass surface of the touch screen. Avoid applying the cleaner directly onto the screen but apply it to the cloth instead.

INTRODUCTION

This manual will explain the workings and setup of the touchscreen fitted to your display. An explanation of the monitor and its workings is covered in the Monitor Manual that came with this product. The following pages will tell you how to install the software needed by the touchscreen to function and go through the adjustments that user's can change to enable the screen to perform effectively in many different environments.



The **Ma7 Driver** software has been written to interface between the **Interactive Touchscreen** and a computer running the Windows XP™ operating system.



Windows Vista™

Limited testing has been carried out using Windows Vista™ with no noticeable issues. Further testing is ongoing.

Contact your supplier for more information on other operating systems.

The software comes in three executable files:

The Driver (**Ma7_Driver.exe**) controls the mouse pointer and activates the mouse left button in various modes when a user touches the touchscreen.

The Control Program (**Ma7_Control_En.exe**) is used to set up the driver.

The Setup Program (**Ma7_Setup_En.exe**) is used to set up the calibration and sensitivity of the driver from the touchscreen without using the mouse.

The configuration of the touchscreen is stored in a file called **Ma7.ini**, this file is saved in the same directory as the **Ma7_Driver.exe** file. Once set up, only these files are required to run the driver.

COMPATIBILITY

This program is compatible with Windows XP™.

Limited Windows Vista™ testing has not shown up any issues with running the touch software but has shown up an issue with one of the program element; **Ma7_Setup_En.exe**. Further tests are ongoing. In the mean time see the installation instructions listed for Windows Vista™.



The default settings for the touchscreen driver disable the mouse cursor movement of the touchscreen. The user must enable this in the later stages of the touchscreen driver setup. You must save the configuration before closing the Ma7_Control.En.exe program after the following setup procedure.

INSTALLATION

LOADING THE TOUCH DRIVER SOFTWARE ONTO PC

1. Switch on monitor



Do not plug the touchscreen interface cable into your computer.

2. Insert the '**Information & Touch Software installation CD**' into the PC and follow the automatic installation instructions.

If the installation does not start automatically;

1. Click **START** on the Windows™ Taskbar; then click **RUN**.
2. Type d:\Autorun.exe where d is the letter of your CD-ROM drive. Click **OK**
3. Select the 'Touch software' button from the on-screen menu.

The software will create a subdirectory call **TouchScreen** on your PC in the '**Program Files**' sub directory and copy all the relevant files necessary to run the touchscreen into it. Once completed, '**launch the application**' will finish the installation. Please follow the instructions in the next section to complete the installation and the setting up of your touch screen.



For Windows Vista™ users; When the installation has finished and the dialogue box asks if you want to launch the application, un-tick the box. Instead, Select 'Start', 'All Programs', 'Touchscreen' and select Ma7_Control_En.exe to continue.

STARTING THE DRIVER CONTROL PROGRAM

Connect the touchscreen cable to a free serial port of the.

1. If the Touchscreen control panel is not already running, start the driver by clicking the icon on the desktop or select the Windows™ **START** button and **RUN "Ma7_Control_En.exe"** with the necessary path or **double click Ma7_Control_En.exe** from 'Windows Explorer™' or click the short cut placed on the desktop.

When the program is started it displays the following window (Fig 1):



Fig 1

CONFIGURING THE COMMUNICATIONS PORT

When the program has loaded:

1. Select the **Comms** tab.
2. Select the comm port the Touchscreen is connected to.
3. Make sure the driver box called '**Present**' is red and select the appropriate port that the touchscreen is connected to.
4. Select a Baud rate of 19,200.
5. Tick the '**Open**' box in the **Status** section.
6. When the driver recognizes the screen, the **Open**, **Active** and **Valid** boxes will go red (fig 2).
7. The button called **Reset** will reset the touchscreen driver when pressed.

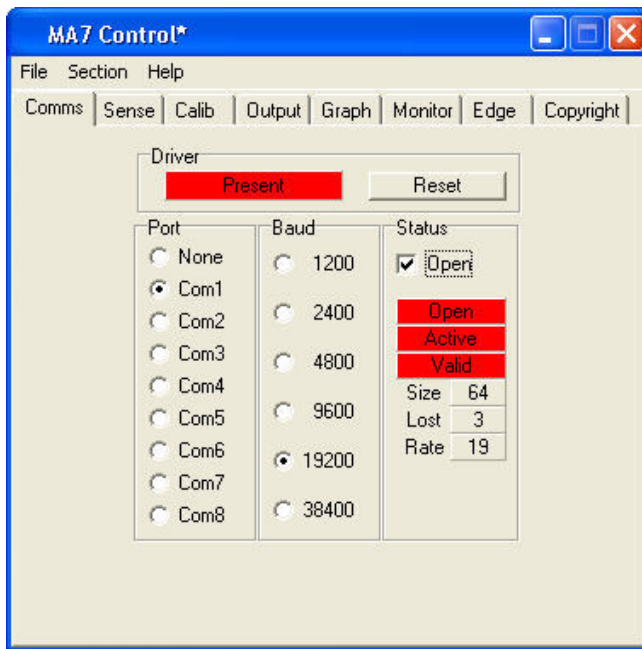


Fig 2

EXPLANATION OF THE STATUS SECTION

1. The following explanation of the **Status** section assumes that the touchscreen is physically attached to a serial port of the PC:

Open - will go red and remain red only when the driver is present, the correct port is chosen and the Baud rate is set correctly.

If the **Open** box does not go red then the driver is not loaded or another driver has taken the port.

If the **Open** box goes on and off repeatedly then the driver is loaded but another piece of hardware is on that port or the Baud rate is set incorrectly.

Active - will go red and remain red only when the driver is present, the correct port is chosen and set to the correct Baud rate and when **Open** is red.

Active - will flash on and off to indicate there is activity on the port but it is some other hardware device.

Valid - will only go red and remain in this state when both **Open** and **Active** are red and the Baud rate is set correctly.

Only when **Open**, **Active** and **Valid** boxes have all changed to red and remain red is the touchscreen ready for the next stage of driver setup.

When communications exist between the driver and the touchscreen, the three boxes **Size**, **Lost**, **Rate**, will display data. These indicate the following information:

Size - number of wires in the touch sensor.

Lost - how many data scans have not been captured by the driver.

Rate - how many scans of the touchscreen per 1 second.

Reasons why the driver does not see the touchscreen are usually:

- Touchscreen is on a different port to the one selected
- The Baud rate is incorrect
- Another device, driver or program is using the port



The mouse pointer will not respond to a touch until it has been enabled in the Output section of the Control Program. Details of this will follow later in this manual.

The **Reset** button loads fresh data from the touchscreen. This is used as a reference for detecting any new touches. This may be necessary if the touchscreen environment has been changed; for example, the touchscreen has been moved.

ADJUSTING THE TOUCH SENSITIVITY LEVEL

Automatic Setup

When you receive your unit, the sensitivity settings will have been optimised when the unit was manufactured. These settings should only be altered if you are experiencing problems such as an electrically noisy environment. Contact your supplier if you need further explanation.

1. To select the sensitivity setup click on the **Sense** tab.

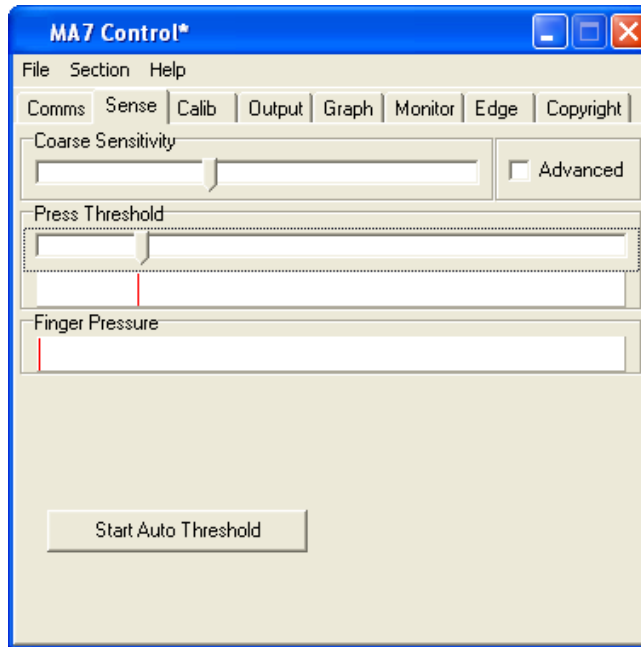


Fig 3

2. First set the **Course Sensitivity** to approximately two thirds by dragging the bar with your mouse.
3. Set the **Press Threshold** to approximately one third by dragging the bar with your mouse.
4. Click on **Start Auto Threshold**. The following image appears:

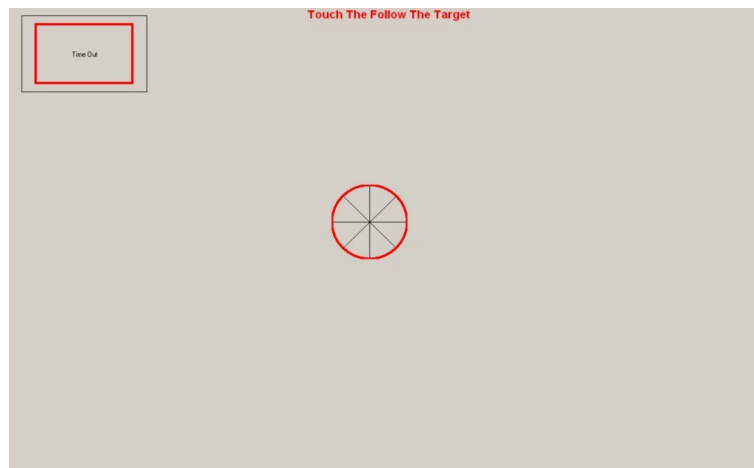


Fig 4

5. Place your finger over the centre red circle (Fig4.) and follow it with your finger until it turns green, then remove your finger. The automatic adjustment of sensitivity is now complete and the screen returns to Fig 3.

Manual Sensitivity Setup

6. The **Coarse Sensitivity** slider is used to set the sensitivity of the touchscreen. If the slider is set to the right, the touchscreen is more sensitive to detecting a touch. More or less sensitivity may be required, dependent upon glass thickness or if the system is to be used with gloved hands.

7. The moving indicator under **Finger Pressure** shows the strength of touchscreens signal. Nominally the **Coarse Sensitivity** slider is adjusted so the **Finger Pressure** indicator moves about a third of the way along in response to a light touch.
8. The **Press Threshold** slider is used to adjust the sensitivity of the touch to simulate a mouse button press. The driver recognises a touch when the **Finger Pressure** indicator exceeds the position of the **Press Threshold** slider. As default this is the same sensitivity level as required for mouse movement.
9. To make certain that the touch is sensitive enough all over the display area, move a finger around the touchscreen and make certain that the **Finger Pressure** indicator always exceeds the **Press Threshold** slider position.

CALIBRATION

1. Select the **Calib** tab as shown below (Fig 5), click the '**Start Calibration**' box.

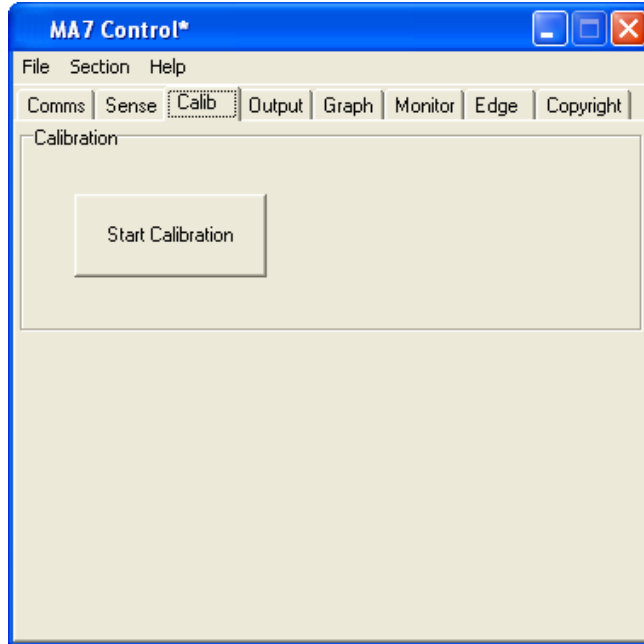


Fig 5

2. You will see the following screen (Fig 6); there are three targets to touch in total, like the one shown below:

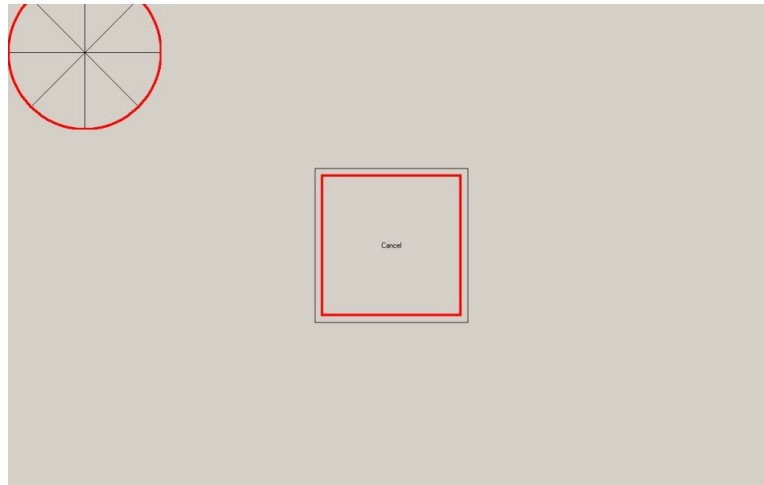


Fig 6

3. When each of these targets is displayed, touch and hold your finger on the centre of the circular target. **You must touch all three targets in turn.**
4. The red circle in the target slowly moves towards the centre of the target.
5. Remove your finger only when the next target appears and touch that one.



If the touch calibration is not correct after this procedure, please run the process again and adjust your finger position on the targets to compensate for the misalignment.

SETTING THE TOUCH OUTPUT TO SUIT THE APPLICATION PROGRAM

1. Select the **Output** tab.

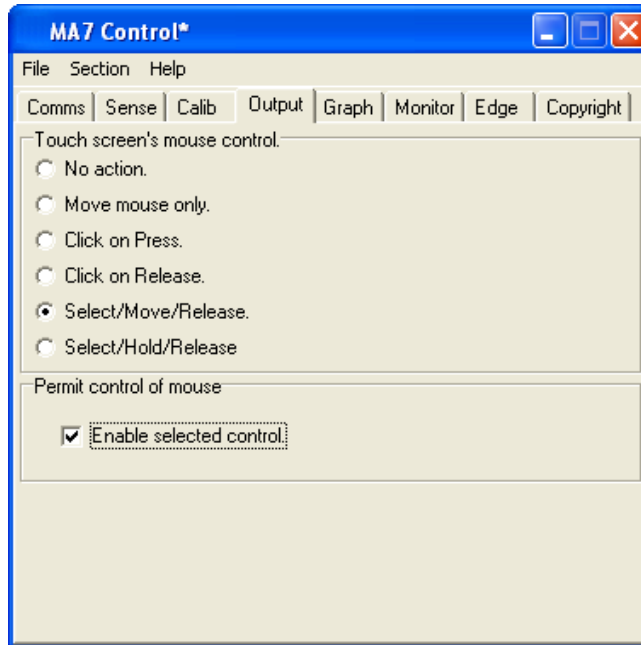


Fig 7

2. Select the mouse control required for your application (Fig 7).



To enable the touch function on the screen, tick the **Enable** check box.

3. **No action** selects no mouse pointer movement or button pressing when touching the touchscreen.
4. **Move mouse only** enables mouse pointer movement but no button movement when touching the screen.
5. **Click on press** enables mouse pointer movement and left button click when touching the screen.
6. **Click on release** enables mouse pointer movement when touching the screen and left button click when the finger moves away from the touchscreen. This can be used in applications where the user needs confirmation the correct target has been selected before being activated with a button click by removing the finger.
7. **Select/Move/Release** (Previously Drag and Drop) enables the mouse pointer movement and left button down when the screen is touched. The left button stays down as the finger is moved around the screen and left button click up does not occur until the finger is removed from the screen. The item selected is dragged around the screen following the mouse cursor movement and it is released only when the finger is removed from the screen.
8. **Select/Hold/Release** enables the mouse pointer movement and left button down when the screen is touched. The left button stays down as the finger is moved around the screen and left button up does not occur until the finger is removed from the screen. The item selected remains selected but remains in its original position, it stays selected until the finger is removed from the screen.

This mode is useful for Web pages where scroll bars can be manipulated by touching the end buttons but text cannot be highlighted. If the user selects a target and then moves away from target when removing the finger, the target selection is still valid.

You must now save the settings

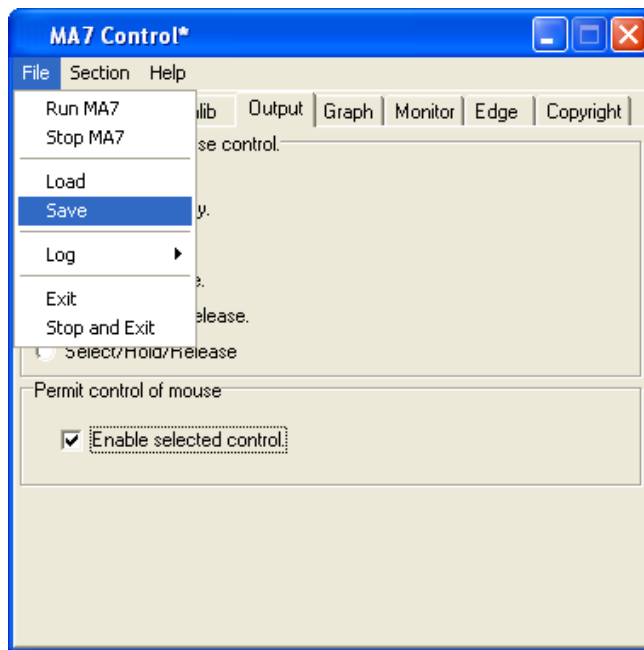


Fig 8

1. (Fig 8) Click on file.
2. Click on save to save the current settings.



When the touchscreen driver has been set up and there is no requirement to change it.

DIAGNOSTICS AND FREQUENTLY ASKED QUESTIONS

Testing the Hardware with 'Graph'

1. Select the **Graph** tab.

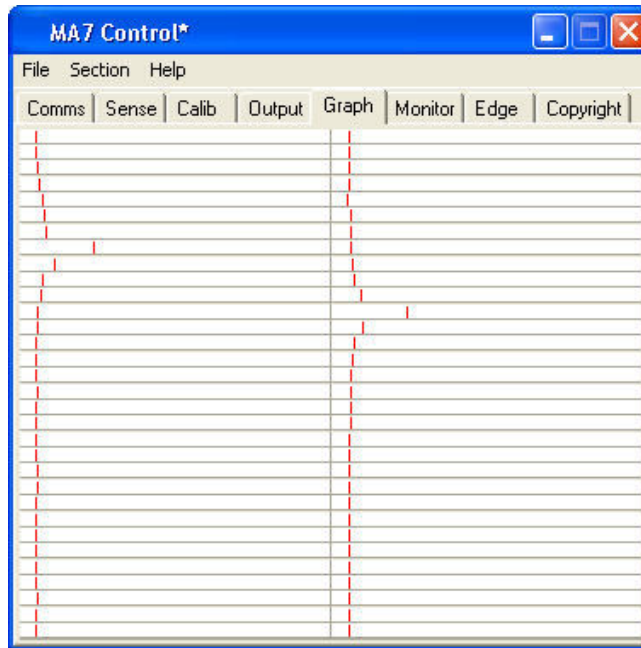


Fig 9

2. Run a finger around the sensor, the effect of the finger on nearby wires can be seen by a visible movement on the indicators (Fig 9), each representing one wire. The algorithm in the driver interpolates the response curve to generate an accurate co-ordinate for the finger position.

The following hardware checks can now be made:

Wire Integrity Test

3. Run a finger in both horizontal and vertical directions slowly and check that each wire indicator moves in a similar manner to the others. This test will identify touchscreen hardware and communication problems, which must be resolved before continuing with the driver setup. Contact your supplier for more information.

Signal to Noise Check

4. There will always be some noise pickup on the touchscreen; this can be seen by slight movement of the 64 indicators. The system can cope with this providing the noise is not excessive. Compare the signal strength of a finger against the noise. The touchscreen should function acceptably providing the peak noise is no more than one-third worst-case signal strength.
5. If the system is very noisy then the source of the noise must be investigated. The most likely source is high voltage switching near the touchscreen from nearby electronics. Try solving problems by earthing metalwork or moving the display further away. If the problem persists, contact your supplier.

Inter-Wire Linearity

6. Checking the shape of the waveform in response to a touch may assist in setting up the **Inter-Wire Linearity** described in the **Monitor** section.

MONITOR MODE

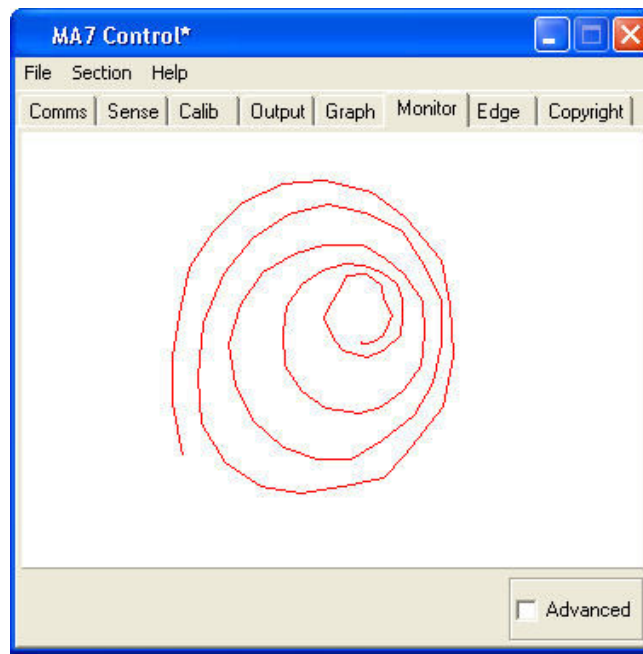


Fig 10

1. This section is used to check the output of the touchscreen over the whole display area represented by the white box in the centre. It is useful in checking for any dead areas on the touchscreen and the performance of the touchscreen being able to follow the finger accurately and responsibly (Fig 10).
2. When using this feature make sure that the touchscreen output is disabled by un-ticking the **Enable Selection Control** in the output section. When the finger is removed for a few seconds the display will automatically clear for more testing.
3. When the **Advanced** box is ticked the **Inter-Wire Linearity** can be adjusted if necessary. This allows the driver to handle different response curves caused by different sizes of touchscreen and different glass thickness.
4. The linearity can be adjusted for correct positioning between the wires. The default setting is centre, which should be satisfactory for most applications (Fig 11/12).
5. If the touch sensor is large and there is a large gap between the wires or the signal is very strong the slider may need to be moved to the right. This is because the peak is very strong and involves very few wires and the algorithm to select touch position needs to change.



Fig 11
Inter-Wire Linearity set correctly



Fig 12
Inter-Wire Linearity set incorrectly

USING EDGE ENHANCEMENT

1. To allow easy access to the sliders and buttons at the edge of the display, the cursor can be positioned nearer the edge of the screen. The amount of enhancement can be adjusted via the screen shown.

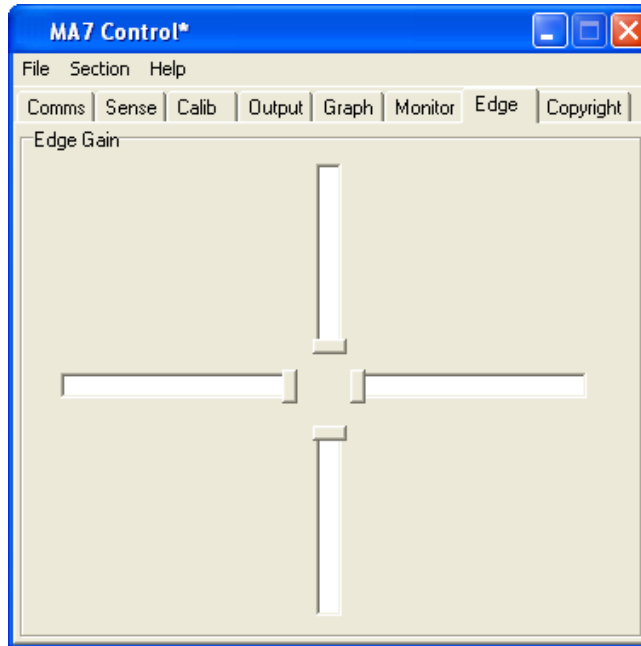


Fig 13

2. Each of the sliders represents one edge of the sensor; the default position is as illustrated above (Fig 13).
3. **Edge Gain** can also be used to counteract the effects of nearby metalwork that surrounds the display area.
4. The further the sliders are away from the centre, the greater enhancement is given to the appropriate edge.



Too much edge enhancement will force the cursor to the edge of the display where it may not have the desired effect.

DELAYED STARTING OF THE DRIVER OUTPUT

1. When starting a touchscreen computer system, it is sometime desirable to be able to prevent users from interfering with the start-up procedures from the touchscreen. Delaying the action from the touchscreen driver to the application can do this.
2. This can be done by editing the **MA7.ini** file. This is found in the same directory as the **MA7_Control_En** and **MA7_Driver_En** programs. There is a line, **StartDelayInt1=0**. By changing the 0 to a number between 1 and 120 adds a delay of up to 120 seconds between the time when the driver is loaded and when it can be used to control an application program.

FAULT FINDING GUIDE

The following are some possible reasons why the touch screen might not work. If they do not solve your problem or you have a situation not covered please contact your supplier.

DRIVER DOES NOT SEE THE TOUCHSCREEN

Touchscreen on a different comm port than the one selected.
The Baud rate is incorrect.
Another device, driver or program is using the port.

TOUCHSCREEN PERFORMS BADLY NEAR THE EDGES OF THE DISPLAY

Metal framework near to the touchscreen may interfere with the touchscreens performance. This effect can be diminished by increasing the distance between metalwork and the touch sensor or by coating the metalwork with an insulating paint or plastic coating. The driver can compensate by utilising the **Edge Enhancement** feature described in this document. The effects of the framework can be stabilised if it is grounded.

FALSE TOUCHES

If the noise on the system is great, then the **Finger Pressure** indicator may move by small amounts without the presence of a finger. If the **Press Threshold** is set too low, then the noise on the system could trigger false touches. This can be remedied by adjusting **Coarse Sensitivity** to a lower level, thus making the system less sensitive.

FAILURE TO SEE TOUCH EFFECT

The default settings for the touchscreen driver are set so that the mouse cursor movement is disabled during setup. The user must enable this output option by following **Setting the Output Mode for the Driver**.

If the selected option is enabled and touches are still not being registered, then adjustment to the **Press Threshold** is required to ensure the setting is to the left of the **Finger Pressure** indicator, all over the display area, when a finger is present.

MOUSE MOVEMENT IS NOT SMOOTH

Refer to **Monitor Mode** and the effects of **Inter-Wire Linearity**. Adjustment to the **Press Threshold** may be required to ensure the setting is to the left of the **Finger Pressure** indicator, all over the display area, when a finger is present.

CHANGES TO THE DRIVER ARE NOT BEING SAVED

Make sure that after making changes to the setup program that the **Save** command is used, in the **File** pull down menu. Make sure no other versions of Ma7.ini files exist on the system, this problem normally occurs when an old Ma7 files exists in a Windows™ main directory.

MOUSE CURSOR MOVES RANDOMLY OR SEEMS STUCK

For the touchscreen to work properly and effectively, it must be provided with a steady environment, therefore if the monitor is moved, this will upset the system. The driver should reset itself. However, a reset can be forced. Alternatively, by pressing **CTRL+ALT+DELETE**, the driver can be stopped from running and restarted by selecting **File** and **Run Ma7** to restart.

PROBLEMS WITH WINDOWS™ AUTOMATICALLY RUNNING THE DRIVER FROM START-UP

If it is required to start the driver every time Windows™ is started then a **short-cut** to **Ma7_Driver.exe** can be put in the **Start-Up folder**. The program itself must **NOT** be put into the **Start-Up** menu. If this is done then the driver will place a copy of the Ma7.ini into the start-up menu and Notepad will open and display the Ma7.ini file information. To correct this problem the machine must be returned to pre-MA7 driver installation condition. **ALL** MA7 related files must be removed from the machine including the Start-up Menu and the driver re-installed.

SLOW TOUCH SCREEN RESPONSE WHEN USING POWER HUNGRY APPLICATIONS

There are several ways to improve system performance.

Optimise the Background performance against the Applications, to do this follow the simple instructions below:

Select the Windows™ START Button; go into Settings and Control Panel.
Open the System folder and select the **Advance** tab.
Press the Performance Options button.
Change the selection from Optimise Performance for Applications to Optimise Performance for Background Services.

CHECK OR CHANGE THE VIRTUAL MEMORY SETTINGS

In the System folder under Advanced change the size of the page file. The rule of thumb is that the page size should be 1½ times bigger than the installed Ram. Therefore if the system has 256MB of ram the page size should be 384MB. If Page size is less than the above rule change it. If this rule has been followed then increase the size by say 3 times. Check the system performance each time the size has been increased.

DRIVER PRIORITY CHANGE

All Programs and Applications are given a priority in windows™. Increasing the priority given to it by Windows™ can boost the performance of an application. The user can do this as follows: Run Task Manager by pressing CTRL, ALT and DELETE in that order and all at the same time.

Select Task Manager followed by Processes.
Scroll down the list of running processes until the MA7 driver is found and right-click it.
Highlight the Set Priority and the following list should appear:

LOW, BELOW NORMAL, NORMAL, ABOVE NORMAL, HIGH and REALTIME

The driver should be running in NORMAL, change this to ABOVE NORMAL.
Test the response of the touch screen, the highest recommended setting is HIGH.



Do not select REALTIME as this would set the driver priority to be the same as the operating system itself; this can make the Windows™ operating system unstable.



A priority change is only valid on the Windows™ session that it was performed in. Hence when Windows™ is restarted or the machine is powered off then the changes are lost, the driver will be set back to a NORMAL priority level.

To set the priority settings permanently when the system restarts:

Create a touch priority batch file called touchp.bat in
C:\Documents and Settings\All users\Start Menu\Programs\Startup
containing the following lines.

```
@echo off  
start /high c:\program files\TouchScreen\MA7_Driver.exe
```

Where c:\program files\TouchScreen is the directory where the MA7_Driver.exe exists on your system.



A copy of touchp.bat will have been loaded into your startup group when the software was installed.