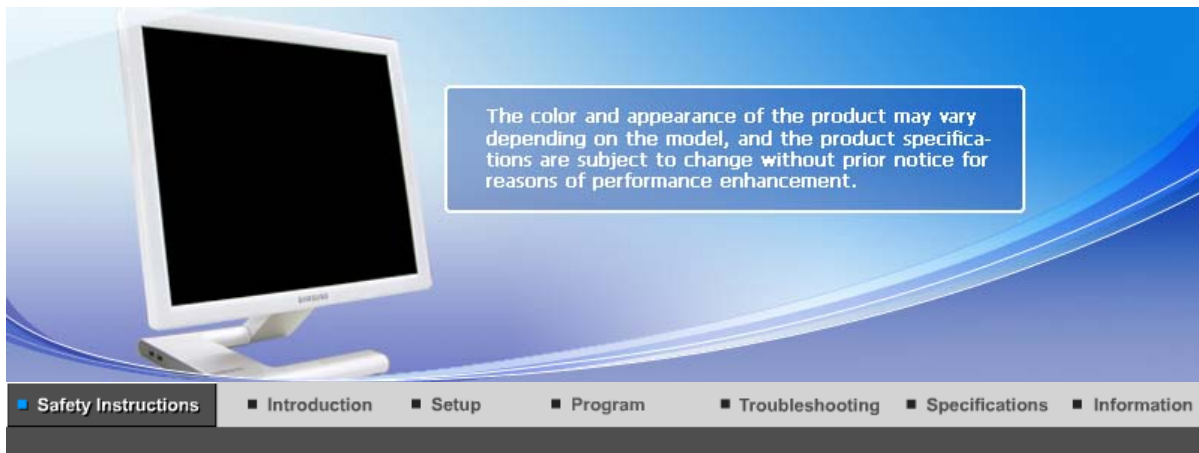




# SyncMaster 971P





Notational | Power | Installation | Clean | Others

## Notational

Please read the following safety instructions as they are designed to prevent damage to property and harm to the user.

### Warning / Caution



Failure to follow directions noted by this symbol could result in bodily harm or damage to the equipment.

### Notational Conventions



Prohibited



Important to read and understand at all times



Do not disassemble



Disconnect the plug from the outlet



Do not touch



Ground to prevent an electric shock

Notational | Power | Installation | Clean | Others

## Power

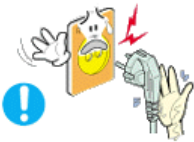


When not used for an extended period of time, set your computer to DPMS. If using a screen saver, set it to active screen mode.

The images here are for reference only, and are not applicable in all cases (or countries).



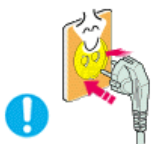
- **Do not use a damaged or loose plug.**
  - This may cause electric shock or fire.



- **Do not pull the plug out by the wire nor touch the plug with wet hands.**
  - This may cause electric shock or fire.



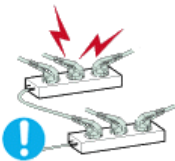
- **Use only a properly grounded plug and receptacle.**
  - An improper ground may cause electric shock or equipment damage.



- **Insert the power plug firmly so that it does not come loose.**
  - A bad connection may cause fire.



- **Do not excessively bend the plug and wire nor place heavy objects upon them, which could cause damage.**
  - This may cause electric shock or fire.



- **Do not connect too many extension cords or plugs to one outlet.**
  - This may cause fire.



- **Do not disconnect the power cord while using the monitor.**
  - A surge may be caused by the separation and may damage the monitor.



- **Do not use the power cord when the connector or plug is dusty.**
  - If the connector or plug of the power cord is dusty, clean it with a dry cloth.
  - Using the power cord with a dusty plug or connector may cause an electric shock or fire.

## Installation



Be sure to contact an authorized Service Center, when installing your monitor in a location with heavy dust, high or low temperatures, high humidity, and exposed to chemical substances and where it operates for 24 hours such as at airports, train stations etc.

Failure to do so may cause serious damage to your monitor.



- **Place your monitor in a location with low humidity and a minimum of dust.**

- Failure to do so may cause electric shock or fire inside the monitor.



- **Do not drop the monitor when moving it.**

- This may cause damage to the product or the person carrying it.



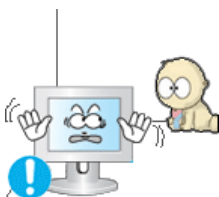
- **Install the monitor base in a showcase or shelf so that the end of the base does not protrude from the showcase or shelf.**

- Dropping the product may cause a malfunction or injury to the person carrying it.



- **Do not place the product on an unstable or small surface area.**

- Place the product on an even and stable surface, as the product may fall and cause harm to someone walking by, specifically children.



- **Do not place the product on the floor.**

- Take care, as someone, specifically children may trip over it.



- **Keep any flammable objects such as candles, insecticides or cigarettes away from the product.**

- Otherwise, this may cause fire.



- **Keep any heating devices away from the power cable.**

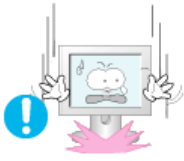
- A melted coating may cause electric shock or fire.

- **Do not install the product in places with poor ventilation, for instance, a**



**bookshelf, closet, etc.**

- Any increase in the internal temperature may cause fire.



**Put down the monitor carefully.**

- Failing to do so may damage the monitor.



**Do not place the monitor face down.**

- This may damage the TFT-LCD surface.



**The installation of the bracket must be done by a qualified professional.**

- Installing the bracket by unqualified personnel may result in injury.
- Always use the mounting device specified in the owner's manual.



**When installing the product, make sure to keep it away from the wall (more than 10 cm/4 inches ) for ventilation purposes.**

- Poor ventilation may cause an increase in the internal temperature of the product, resulting in a shortened component life and degraded performance.



**Keep the plastic packaging (bag) out of children's reach.**

- The plastic packaging (bag) may cause suffocation if children play with it.

Notational

Power

Installation

**Clean**

Others

**Clean**



When cleaning the monitor case or the surface of the TFT-LCD screen, wipe with a slightly moistened, soft fabric.



**Do not spray water or detergent directly onto the monitor.**

- This may cause damage, electric shock or fire.



- Use the recommended detergent with a smooth cloth.



- If the connector between the plug and the pin is dusty or dirty, clean it properly using a dry cloth.
  - A dirty connector may cause electric shock or fire.



- Make sure to unplug the power cord before cleaning the product.
  - Otherwise, this may cause electric shock or fire.



- Unplug the power cord from the power outlet and wipe the product using a soft, dry cloth.
  - Do not use any chemicals such as wax, benzene, alcohol, thinners, insecticide, air freshener, lubricant or detergent.



- Contact the **SAMSUNG customer care center** or Customer Center for interior cleaning once a year.
  - Keep the product's interior clean. Dust which has accumulated in the interior over an extended period of time may cause a malfunction or fire.

Notational

Power

Installation

Clean

Others

## Others



- Do not remove the cover (or back).
  - This may cause electric shock or fire.
  - Refer to a qualified servicing company.



- If your monitor does not operate normally - in particular, if there is any unusual sound or smell coming from the monitor - unplug it immediately and contact an authorized dealer or the **Service Center**.
  - This may cause electric shock or fire.

- Keep the product away from places exposed to oil, smoke or moisture; do not install inside a vehicle.
  - This may cause a malfunction, electric shock or fire.
  - In particular, avoid operating the monitor near water or outdoors where



the monitor could be exposed to snow or rain.



- **If the monitor is dropped or the casing is damaged, turn the monitor off and unplug the power cord. Then contact a [Service Center](#) .**

- The monitor may malfunction, causing electric shock or fire.



- **Disconnect the plug from the outlet during storms or lightning or if it is not used for a long period of time.**

- Failure to do so may cause electric shock or fire.



- **Do not try to move the monitor by pulling only the wire or the signal cable.**

- This may cause a breakdown, electric shock or fire due to damage to the cable.



- **Do not move the monitor right or left by pulling only the wire or the signal cable.**

- This may cause a breakdown, electric shock or fire due to damage to the cable.



- **Do not cover the vents on the monitor cabinet.**

- Bad ventilation may cause a breakdown or fire.



- **Do not place water containers, chemical products or small metal objects on the monitor.**

- This may cause a malfunction, electric shock or fire.
- If a foreign substance enters the monitor, unplug the power cord and contact [the Service Center](#).



- **Keep the product away from combustible chemical sprays or inflammable substances.**

- This may cause an explosion or fire.



- **Never insert anything metallic into the monitor openings.**

- This may cause electric shock, fire or injury.



- **Do not insert metal objects such as chopsticks, wire and tools or inflammable objects such as paper or matches into the vent, headphone port or AV ports or etc.**

- This may cause electric shock or fire. If an alien substances or water enters the product, turn the product off, unplug the power connector from the wall outlet and contact the [Service Center](#).



- **When viewing a fixed screen for an extended period of time, residual image or blurriness may appear.**

- Change the mode to energy saving mode or set a screensaver to a changing picture when away from the monitor for an extended period of time.



- **Adjust the resolution and frequency to the levels appropriate for the model.**

- An inappropriate resolution may cause undesirable picture quality.

19 inch (48 cm) - 1280 x 1024



- **Viewing the monitor continuously at a too close angle may result in damage to your eyesight.**



- **To ease eye strain, take at least a five-minute break after every hour of using the monitor.**



- **Do not install the product on an unstable, uneven surface or a location prone to vibrations.**

- Dropping the product may cause damage to the product or the person carrying it. Using the product in a location prone to vibrations may shorten the lifetime of the product or may cause the product to catch fire.



- **When moving the monitor, turn off and unplug the power cord. Make sure that all cables, including the antenna cable and cables connected to other devices, are disconnected before moving the monitor.**

- Failure to disconnect cables may damage it and cause fire or electric shock.



- **Place the product out of children's reach, as they could damage by hanging onto it.**

- A falling product may cause injury to the person or even fatality.

- **When not using the product for an extended period of time, keep the product unplugged.**





- Otherwise, this may cause heat emission from the accumulated dirt or degraded insulation, causing electric shock or fire.



• **Do not place your children's favorite toys or any other objects of interest on the product.**

- Children may try to climb on the product to retrieve an object. The product could fall, causing injury or even fatality.



• **When lifting up or moving the monitor, do not lift the monitor upside down while holding only the stand.**

- This may cause your monitor to fall, and become damaged or cause personal injury.

• **Good Postures When Using the Monitor**



• Try to maintain a good posture when using the monitor.

- Keep your back straight.
- Keep a distance of about 45 ~ 50 cm between your eyes and the monitor screen. Look at the screen from slightly above it, and have the monitor directly in front of you.
- Tilt the monitor upwards by 10 ~20 degrees. Adjust the monitor height so that the top of the monitor is slightly below eye level.
- Adjust the monitor angle so that there is no reflected light on the screen. Try to maintain your arms perpendicular to your armpits.
- Keep your arms level with the back of your hands.
- Keep the angle of the elbow perpendicular.
- Keep the angle of the knees at more than 90 degree. Do not let your feet fall up from the floor. Adjust the arm position so that it is below the heart.



[List of Features](#) | [Unpacking](#) | [Front](#) | [Rear](#) |

## List of Features

- Magic Contrast: Implements a deep color contrast of 4000:1 ratio.
- Magic Speed: Provides a clear screen without afterimages with fast response speed of 6ms.
- Magic Stand: Provides a high availability to fit your environmental needs with a height adjustable stand (up to 60mm).
- Magic Rotation: Adjusts screen automatically to fit to monitor angle when it is changed with the Rotation function.

[List of Features](#) | [Unpacking](#) | [Front](#) | [Rear](#) |

Please make sure the following items are included with your monitor.  
If any items are missing, [contact your dealer](#).  
[Contact a local dealer](#) to buy optional items.

## Unpacking



Monitor

## • Manual



**Quick Setup Guide**



**Warranty Card**  
(Not available in all locations)



**User's Guide,  
Monitor Driver,  
Natural Color software,  
AutoRotation software**

## • Cable



**'DVI to D-SUB' Cable**



**Power Cord**



**DC-Adapter**



**USB Cable  
(A-B Type cable)**

## • Others



**Cleaning Cloth**

## • Sold separately



**DVI Cable**



Do not use other cables except the dedicated cables, such as DVI/D-Sub and DVI cables, for the product.  
To purchase DVI/D-Sub or DVI cable additionally, contact your local product distributor.

List of Features

Unpacking

Front

Rear

## • Front



- 1 Customized Key** [∞] You can customize key assignment for the Custom button according to your preferences. (Custom Key functionality)

**How to Adjust : MagicTune → Optional → Custom Key → MagicBright, MagicColor, Auto Setup, Source Select, Color Tone**

**1) MagicBright**

MagicBright is a new feature providing optimum viewing environment depending on the contents of the image you are watching. Currently seven different modes are available: Custom, Text, Internet, Game, Sport, Movie and Dynamic Contrast. Each mode has its own pre-configured brightness value. You can easily select one of seven settings by simply pressing MagicBright control button.

[>>Click here to see an animation clip](#)

**2) MagicColor**

MagicColor is a new technology that Samsung has exclusively developed to improve digital image and to display natural color more clearly without disturbing image quality.

[>>Click here to see an animation clip](#)

**3) Auto Setup**

Press this button to self-adjust to the incoming Analog signal.

[>>Click here to see an animation clip](#)

**4) Source Select**

Select the video signal. (Analog/Digital)

[>>Click here to see an animation clip](#)

**5) Color Tone**

The tone of the color can be changed.

[>>Click here to see an animation clip](#)

- 2 Power indicator / Power button** [⏻] The blue light is on in its normal working condition and blinks when setting the adjustments of the monitor.  
Use this button for power the monitor on and off, change the input source, or perform Auto Adjustment.

**1) Power On/Off**

When you press the power button, the monitor is on/off.  
>>[Click here to see an animation clip](#)

## 2) Input Source

When you press the power button, the input source may be changed to Analog or Digital, blinking once with blue light.  
>>[Click here to see an animation clip](#)

## 3) Auto adjustment

When you press the power button, the Auto Adjustment function is activate, blinking twice with blue light.  
(Analog only)  
>>[Click here to see an animation clip](#)



The buttons to the right of the monitor are touch-sensitive buttons.  
Touch a button lightly with your finger.



See [PowerSaver](#) described in the manual for further information regarding power saving functions. For energy conservation, turn your monitor OFF when it is not needed or when leaving it unattended for long periods.

[List of Features](#)

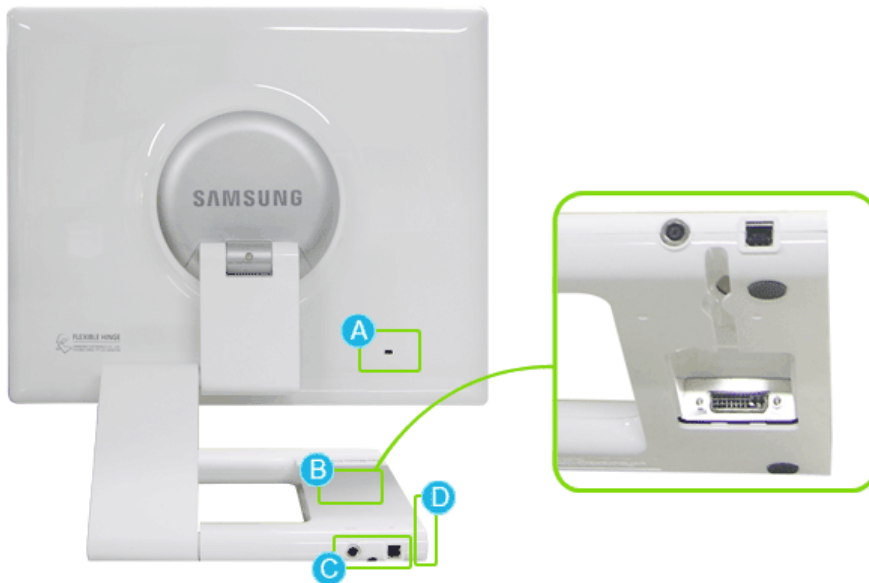
[Unpacking](#)

[Front](#)

[Rear](#)

## Rear

(The configuration at the back of the monitor may vary from product to product.)



A



### Kensington Lock :

The Kensington lock is a device used to physically fix the system when using it in a public place.  
(The locking device has to be purchased separately.)



For using a locking device, contact where you purchase it.

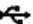
**B****DVI :**

Connect the **DVI** terminal of your monitor to your computer using a DVI/D-Sub cable.


**C****DC 12V :**

Connect a power line to a direct current power supply and then plug it into the relevant power port.




**UP (USB upstream port):**

Connect the  **UP** port of the monitor and the USB port of the computer with the USB cable.

**D****DOWN (USB downstream port):**

Connect the  **DOWN** port of the USB monitor and a USB device with the USB cable.



- To use  **DOWN** (Downstream Port), you have to connect the  **UP** (Upstream Cable ) to the PC.
- Make sure to use the USB cable supplied with this monitor to connect the monitor's  **UP** port and your computer's USB port.



See [Connecting the Monitor](#) for further information regarding cable connections.

The color and appearance of the product may vary depending on the model, and the product specifications are subject to change without prior notice for reasons of performance enhancement.

■ Safety Instructions ■ Introduction ■ **Setup** ■ Program ■ Troubleshooting ■ Specifications ■ Information

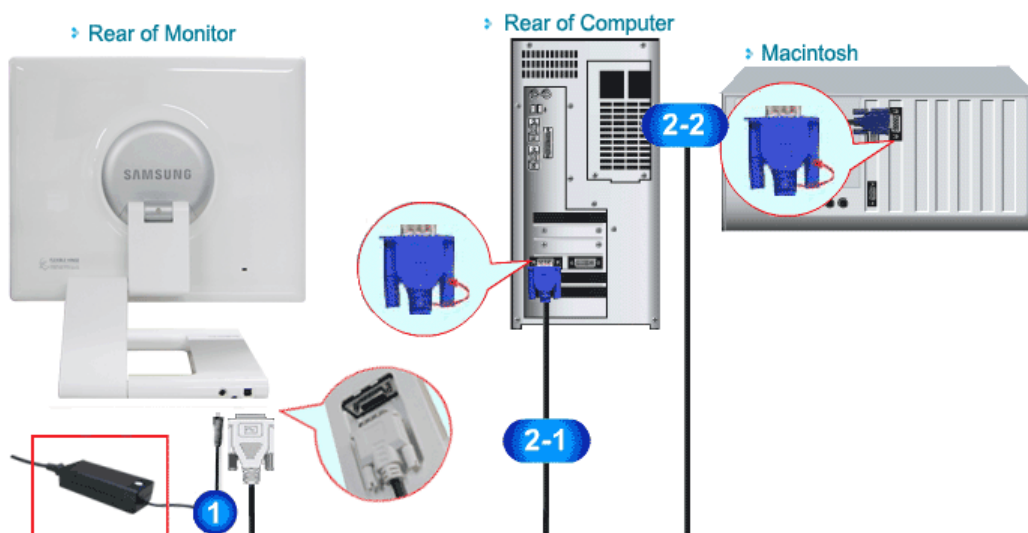
↑ TOP

↑ MAIN

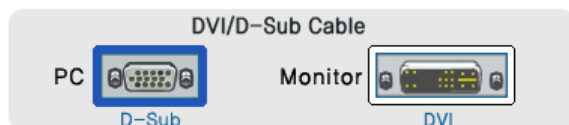
↑ ↺

Connecting the Monitor | Rotating the monitor | Installing the Monitor Driver (Automatic) | Installing the Monitor Driver (Manual) | Natural Color |

## Connecting the Monitor



1. Connect a power line to a direct current power supply and then plug it into the relevant power port.
2. Use a connection appropriate for your computer.
  - 2-1. Using the D-Sub (analog) connector on the video card.  
Connect the **DVI** terminal of your monitor to the D-Sub terminal of your computer using a DVI/D-Sub cable.



- 2-2. Connected to a Macintosh.  
Connect the monitor to the Macintosh computer using the 'DVI to D-SUB' connection cable.



Turn on your computer and monitor. If your monitor displays an image, installation is complete.



If you properly connect your monitor using the DVI connector but get a blank screen, check to see if the monitor status is set to analog. In this case, turn the Power off and on so that your monitor rechecks the input signals.

## Rotating the monitor

### Rotating the monitor



(When pivoting the monitor, rotation angle is displayed on screen of the monitor.)



When rotating the screen, make sure to tilt the monitor 45 to 65 degrees so that it does not touch the floor. When tilting the screen backwards, do not tilt it more than 65 degrees.

## Installing the Monitor Driver (Automatic)



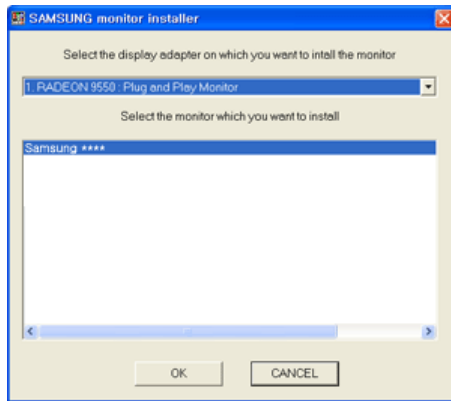
**When prompted by the operating system for the monitor driver, insert the CD-ROM included with this monitor. Driver installation is slightly different from one operating system to another. Follow the directions appropriate for the operating system you have.**

Prepare a blank disk and download the driver program file at the Internet web site shown here.

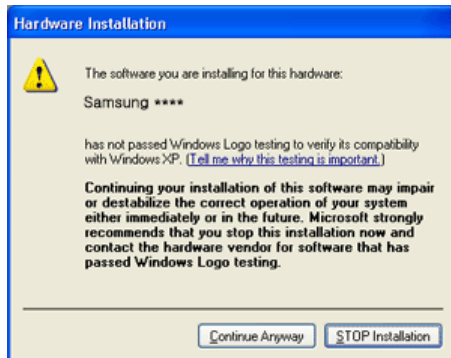
- Internet web site : <http://www.samsung.com/> (Worldwide)  
<http://www.samsung.com/monitor> (U.S.A)  
<http://www.sec.co.kr/monitor> (Korea)  
<http://www.samsungmonitor.com.cn/> (China)

1. Insert CD into the CD-ROM drive.
2. Click **"Windows"**
3. Choose your monitor model in the model list, then click the **"OK"** button.





4. If you can see following message window, then click the "**Continue Anyway**" button. Then click "**OK**" button. (Microsoft® Windows® XP Operating System)



This monitor driver is under certifying MS logo, and this installation don't damage your system. The certified driver will be posted on Samsung Monitor homepage.  
<http://www.samsung.com/>.

5. Monitor driver installation is completed.

## Installing the Monitor Driver (Manual)

[Windows Vista](#) | 
 [Windows XP](#) | 
 [Windows 2000](#) | 
 [Windows Me](#) | 
 [Windows NT](#) | 
 [Linux](#)




**When prompted by the operating system for the monitor driver, insert the CD-ROM included with this monitor. Driver installation is slightly different from one operating system to another. Follow the directions appropriate for the operating system you have.**

Prepare a blank disk and download the driver program file at the Internet web site shown here.

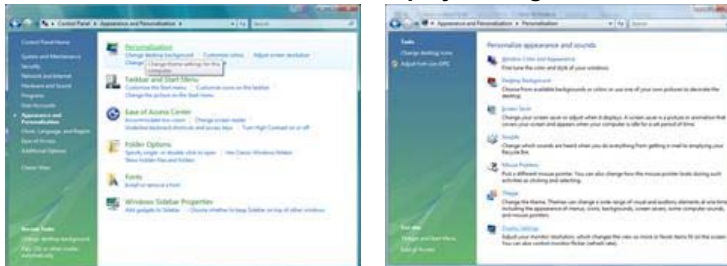
- Internet web site :
  - <http://www.samsung.com/> (Worldwide)
  - <http://www.samsung.com/monitor> (U.S.A)
  - <http://www.sec.co.kr/monitor> (Korea)
  - <http://www.samsungmonitor.com.cn/> (China)

## Microsoft® Windows Vista™ Operating System

1. Insert your Manual CD into your CD-ROM drive.
2. Click  (Start) and "**Control Panel**". Then, double-click on "**Appearance and Personalization**".



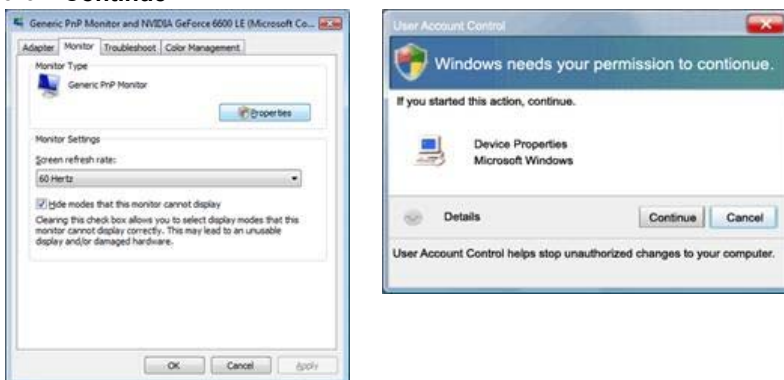
- Click **"Personalization"** and then **"Display Settings"**.



- Click **"Advanced Settings..."**.



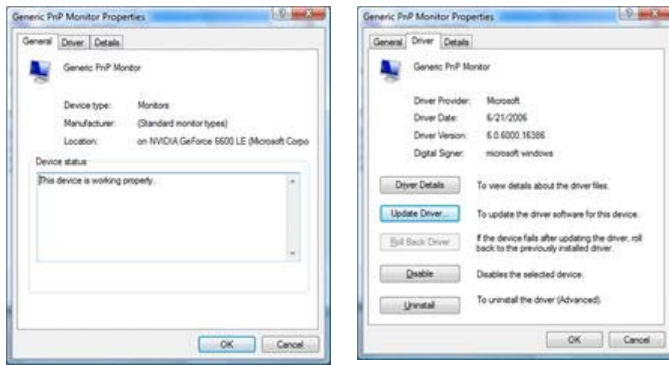
- Click **"Properties"** in the **"Monitor"** tab. If the **"Properties"** button is deactivated, it means the configuration for your monitor is completed. The monitor can be used as is. If the message **"Windows needs..."** is displayed, as shown in the figure below, click **"Continue"**.



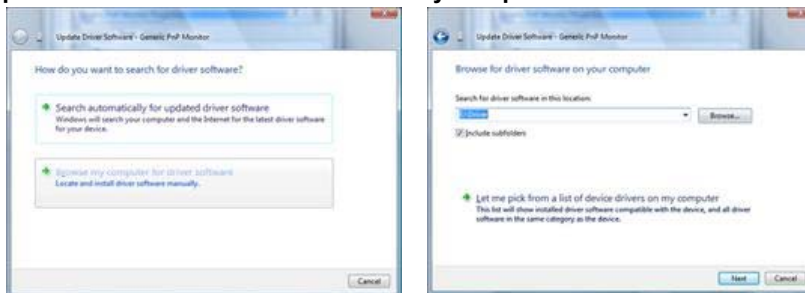
This monitor driver is under certifying MS logo, and this installation doesn't damage your system.  
The certified driver will be posted on Samsung Monitor homepage

<http://www.samsung.com/>

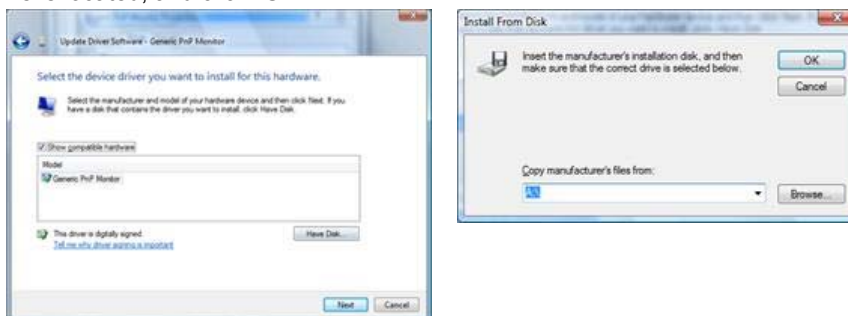
- Click **"Update Driver..."** in the **"Driver"** tab.



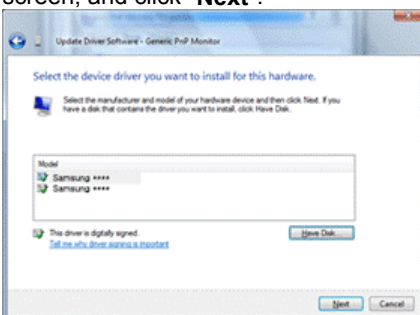
7. Check the "**Browse my computer for driver software**" checkbox and click "**Let me pick from a list of device drivers on my computer**".



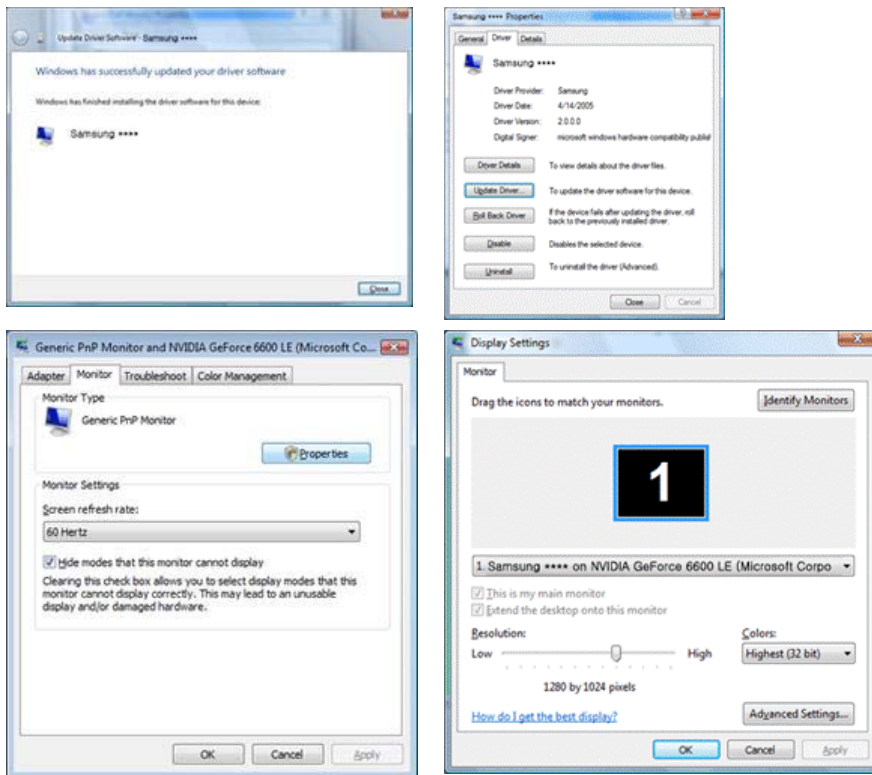
8. Click "**Have Disk...**" and select the folder (for example, D:\Drive) where the driver setup file is located, and click "**OK**".



9. Select the model that matches your monitor from the list of monitor models on the screen, and click "**Next**".

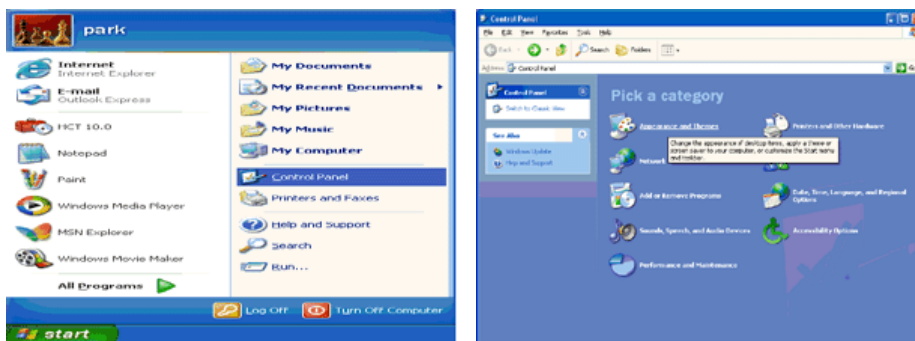


10. Click "**Close**" → "**Close**" → "**OK**" → "**OK**" on the following screens displayed in sequence.

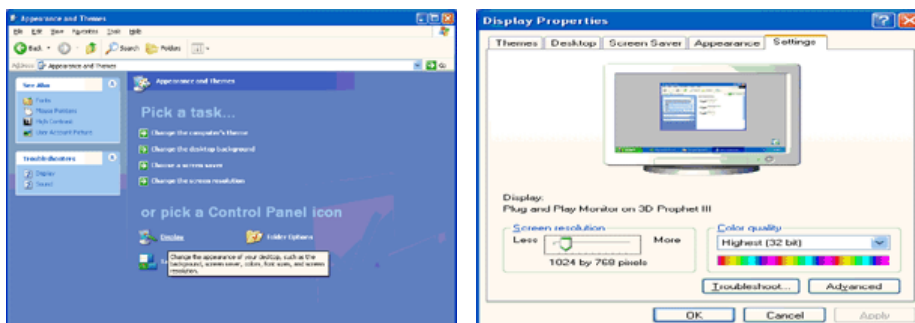


## Microsoft® Windows® XP Operating System

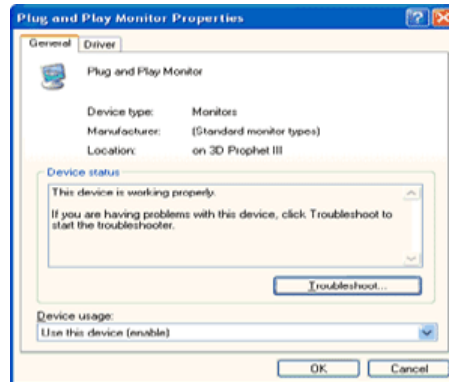
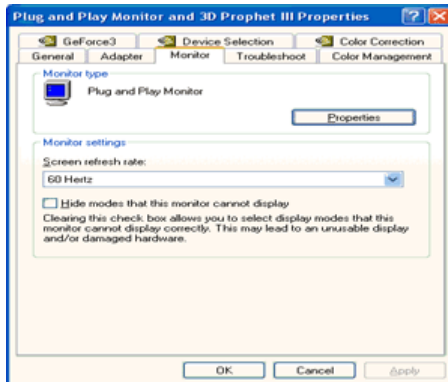
1. Insert CD into the CD-ROM driver.
2. Click **"Start"** —> **"Control Panel"** then click the **"Appearance and Themes"** icon.



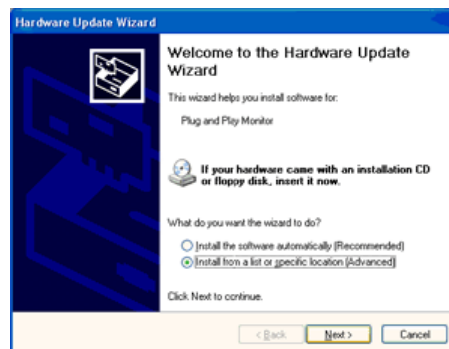
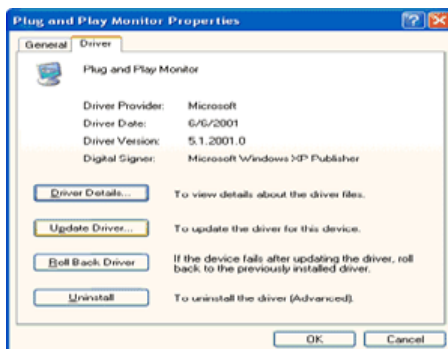
3. Click **"Display"** icon and choose the **"Settings"** tab then click **"Advanced.."**.



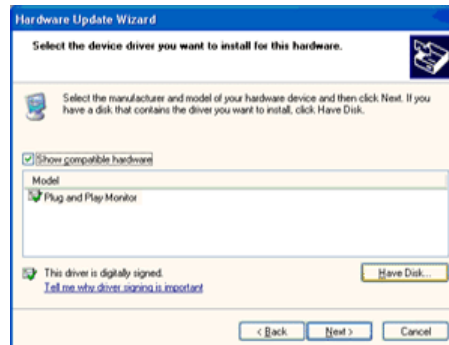
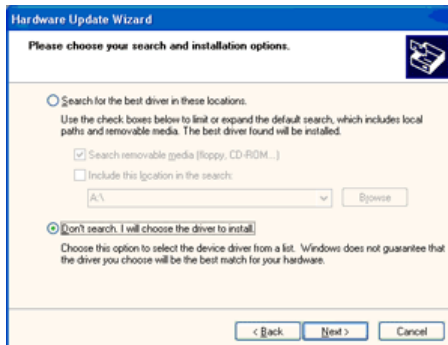
4. Click the **"Properties"** button on the **"Monitor"** tab and select **"Driver"** tab.



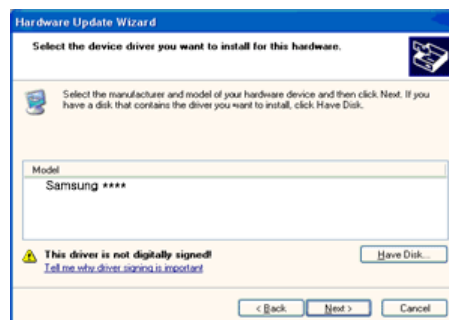
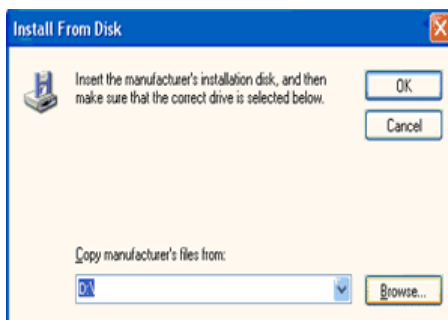
5. Click **"Update Driver.."** and select **"Install from a list or.."** then click **"Next"** button.



6. Select **"Don't search ,I will.."** then click **"Next"** and then click **"Have disk"**.



7. Click the **"Browse"** button then choose A:(D:\Driver) and choose your monitor model in the model list and click the **"Next"** button.

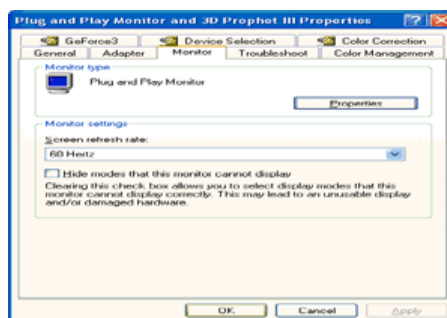
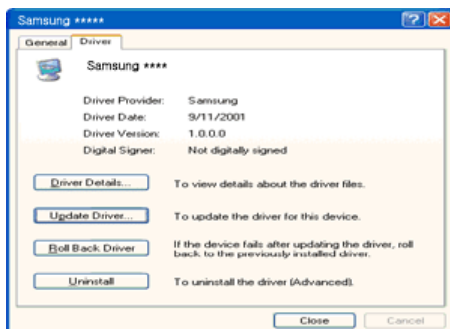
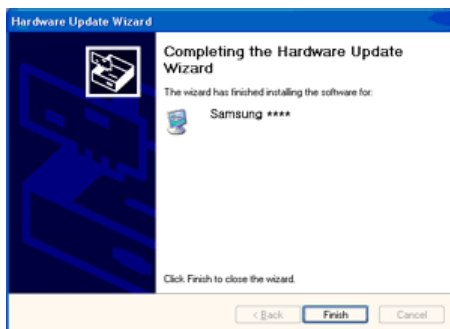


8. If you can see following message window, then click the **"Continue Anyway"** button. Then click **"OK"** button.



This monitor driver is under certifying MS logo, and this installation don't damage your system. The certified driver will be posted on Samsung Monitor homepage. <http://www.samsung.com/>

9. Click the "Close" button then click "OK" button continually.



10. Monitor driver installation is completed.

## Microsoft® Windows® 2000 Operating System

### When you can see "Digital Signature Not Found" on your monitor, follow these steps.

1. Choose "OK" button on the "Insert disk" window.
2. Click the "Browse" button on the "File Needed" window.
3. Choose A:(D:\Driver) then click the "Open" button and then click "OK" button.

### How to install

1. Click "Start", "Setting", "Control Panel".
2. Double click the "Display" Icon.
3. Choose the "Settings" tab and then click "Advanced..".
4. Choose "Monitor".
  - Case1: If the "Properties" button is inactive, it means your monitor is properly configured. Please stop installation
  - Case2: If the "Properties" button is active, click the "Properties" button then follow next steps continually.
5. Click "Driver" and then click on "Update Driver.." then click on the "Next" button.
6. Choose "Display a list of the known drivers for this device so that I can choose a specific driver" then click "Next" and then click "Have disk".
7. Click the "Browse" button then choose A:(D:\Driver).
8. Click the "Open" button, then click "OK" button.
9. Choose your monitor model and click the "Next" button then click "Next" button.
10. Click the "Finish" button then the "Close" button.



If you can see the "**Digital Signature Not Found**" window then click the "**Yes**" button.  
And click the "**Finish**" button then the "**Close**" button.

---

#### ● Microsoft® Windows® Millennium Operating System

1. Click "**Start**", "**Setting**", "**Control Panel**".
2. Double click "**Display**" icon.
3. Select the "**Settings**" tab and click "**Advanced Properties**" button.
4. Select the "**Monitor**" tab.
5. Click the "**Change**" button in the "**Monitor Type**" area.
6. Choose "**Specify the location of the driver**".
7. Choose "**Display a list of all the driver in a specific location..**" then click "**Next**" button.
8. Click the "**Have Disk**" button
9. Specify A:\(D:\driver) then click "**OK**" button.
10. Select "**Show all devices**" and choose the monitor that corresponds to the one you connected to your computer and click "**OK**".
11. Continue choosing "**Close**" button and "**OK**" button until you close the Display Properties dialogue box.

---

#### ● Microsoft® Windows® NT Operating System

1. Click **Start, Settings, Control Panel**, and then double-click **Display** icon.
2. In Display Registration Information window, click Settings Tab and then click **All Display Modes**.
3. Select a mode that you wish to use (Resolution, Number of colors and Vertical frequency) and then click **OK**.
4. Click **Apply** button if you see the screen working normally after clicking **Test**. If the screen is not normal, change to a different mode (lower mode of resolution, colors or frequency).



If there is no Mode at **All Display Modes**, select the level of resolution and vertical frequency by referring to the [Preset Timing Modes](#) in the user guide.

---

#### ● Linux Operating System

To execute X-Window, you need to make the X86Config file, which is a type of system setting file.

1. Press Enter at the first and the second screen after executing the X86Config file.
2. The third screen is for **setting your mouse**.
3. Set a mouse for your computer.
4. The next screen is for **selecting a keyboard**.
5. Set a keyboard for your computer.
6. The next screen is for **setting your monitor**.
7. First of all, set a **horizontal frequency** for your monitor. (You can enter the frequency directly.)
8. Set a **vertical frequency** for your monitor. (You can enter the frequency directly.)
9. Enter the **model name of your monitor**. This information will not affect the actual execution of X-Window.
10. You have **finished** setting up your monitor.  
**Execute X-Window** after setting other requested hardware.

#### ● Natural Color

#### ● Natural Color Software Program



One of the recent problems in using a computer is that the color of the images printed out by a printer or other images scanned by a scanner or a digital camera are not the same as those shown on the monitor.

The Natural Color S/W is the very solution for this problem. It is a color administration system developed by Samsung Electronics in association with Korea Electronics & Telecommunications Research Institute (ETRI).

This system is available only for Samsung monitors and makes the color of the images on the monitor the same as the printed or scanned images.

For more information, refer to Help (F1) in the software program.

#### **How to install the Natural Color software**

Insert the CD included with the Samsung monitor into the CD-ROM Drive. Then, the initial screen of the program Natural Color will be executed. Click Natural Color on the initial screen to install the Natural Color software.

To install the program manually, insert the CD included with the Samsung monitor into the CD-ROM Drive, click the [Start] button of Windows and then select [Run...].

Enter D:\color\NCProSetup.exe and then press the <Enter> key.

(If the drive where the CD is inserted is not D:\, enter the applicable drive.)

#### **How to delete the Natural Color software program**

Select "**Setting/Control Panel**" on the "**Start**" menu and then double-click "**Add/Delete a program**".

Select Natural Color from the list and then click the "**Add/Delete**" button.





## Installation

1. Insert the installation CD into the CD-ROM drive.
2. Click the AutoRotation installation file.
3. Select installation Language, Click "Next".
4. When the Installation Shield Wizard window appears, click "Next."
5. Select "I agree to the terms of the license agreement" to accept the terms of use.
6. Choose a folder to install the AutoRotation program.
7. Click "Install."
8. The "Installation Status" window appears.
9. Click "Finish."
10. When the installation is complete, the MagicRotation, MagicTune™ executable icon appears on your desktop.

Double-click the icon to start the program.



MagicTune™ execution icon may not appear depending on specification of computer system or monitor.  
If that happens, press F5 Key.



### ? Installation Problems (MagicTune™)

The installation of MagicTune™ can be affected by such factors as the video card, motherboard and the network environment.  
See "[Troubleshooting](#)" if you have trouble during installation.



### ! System Requirements

#### OS

- MAC OS X
- Windows 2000
- Windows XP Home Edition
- Windows XP Professional
- Windows Vista™

**It is recommended using MagicTune™ in Windows® 2000**



or later.

## Hardware

- 32MB Memory above
- 60MB Hard disk space above

\* For more information, visit the MagicTune™ [website](#).

## ? Installation Problems (MagicRotation)

The installation of MagicRotation can be affected by such factors as the video card, motherboard and the network environment.

See "[Troubleshooting](#)" if you have trouble during installation.

## ● Limitation

1. The "Display Driver" should be properly loaded for the MagicRotation to work properly. The installed "Display Driver" should be the latest driver supplied by the vendor.
2. If some applications like Windows® Media Player, Real Player, etc. are not displaying movie files properly in 90, 180 and 270 orientations then do the following :
  - Close the application.
  - Select the Orientation (90, 180, 270) you want to view the application.
  - Relaunch the application.In most cases this should fix the problem.
3. User Applications using OpenGL and DirectDraw (3D drawing) will not function as per the orientation mode selected (90, 180, 270).  
e.g. 3D games
4. DOS based applications in Full Screen Mode will not function as per the orientation mode selected (90, 180, 270).
5. Dual is not supported in Windows® 98, ME, NT 4.0.
6. MagicRotation does not provide support for 24 bits per pixel (Bit depth/Color Quality).
7. If you are changing your Graphic Card it is recommended that you uninstall the MagicRotation Software before doing so.

## ● System Requirements

### OS

- MAC OS X
- Windows 2000
- Windows XP Home Edition
- Windows XP Professional
- Windows Vista™

### Hardware

- 128MB Memory above(recommended)
- 60MB Free Hard disk space above

### Service Packs

- It is recommended that your System has the latest Service Pack installed.
- For Windows® NT 4.0, it is recommended to install Internet Explorer 5.0 and above with

Active Desktop component.

\* For more information, visit the MagicRotation [website](#).

\* Windows® is registered trademark of Microsoft Corporation, Inc.

## Uninstall

The AutoRotation program can be removed only by using the "Add or Remove Programs" option of the Windows® Control Panel.

Perform the following steps remove AutoRotation.

1. Go to [Task Tray] ' [Start] ' [Settings] and select [Control Panel] in the menu. If the program runs on Windows® XP, go to [Control Panel] in the [Start] menu.
2. Click the "Add or Remove Programs" icon in Control Panel.
3. In the "Add or Remove Programs" screen, scroll down to find "AutoRotation". Click on it to highlight it.
4. Click the "Change/Remove" button to remove the program.
5. Click "Yes" to begin the uninstall process.
6. Wait until the "Uninstall Complete" dialog box appears.

Visit the AutoRotation [website](#) for technical support for AutoRotation, FAQs (questions and answers) and software upgrades.



[Overview](#) | [OSD Mode](#) | [Color Calibration](#) | [Troubleshooting](#)

## Overview



### What is MagicTune™?

Monitor performance can vary due to the graphics card, host computer lighting conditions and other environmental factors. In order to get the best image on a monitor requires you to adjust it for your unique setting. Unfortunately, the manual controls available to tune the image often prove to be challenging. Proper adjustment (tuning) requires an easy to use program that goes through a step-by-step process to obtain the best overall picture quality.

In most cases even simple adjustments to Brightness, or Contrast require navigation of the multi-level, on-screen display (OSD) menus that are not easy to understand. Furthermore, there is no feedback to assist in correctly setting the controls of the monitor. MagicTune™ is a software utility that guides you through the tuning process with easy to understand instructions and background patterns designed for each monitor control.



## Basic Functionality

MagicTune™ is a software utility that allows monitor adjustment and color tuning using the Display Data Channel Command Interface (DDC/CI) protocol. All adjustments to the display are controlled via software to eliminate the need to use the monitor on-screen display (OSD).

MagicTune™ supports Windows® 2000, XP Home, and XP Professional.

**It is recommended using MagicTune™ in Windows® 2000 or later.**

MagicTune™ allows for quick accurate tuning of the display with the ability to easily save and use monitor configurations that are best suited for you.



## OSD Mode

The OSD mode allows easy adjustment of monitor settings without taking pre-defined steps. You can access the desired menu item to set with ease.

Overview | **OSD Modes** | Color Calibration | Troubleshooting

MagicTune™ allows for quick accurate tuning of the display with the ability to easily save and use monitor configurations that are best suited for you.

- **OSD mode may appear inconsistent with the explanation in guidance book depending on specification of each monitor.**
- **When Pivot is functioning, part of MagicTune™ Program may not operate normally.**
- **AutoRotation : AutoRotation will automatically pivots the monitor to 0, 90, 180 degrees when you pivots the monitor.**



**To execute Rotation, it should be done as below.**

- **Please install both MagicRotation and MagicTune™ programs in your computer.**
- **Launch MagicTune™**
- **Option → Preference → Click the small box in the enable task tray menu.**
- **MagicTune™ control mode will be different according to monitor models.**
- **The permitted angle of rotation of the monitor is determined by the model of the monitor.**

## OSD Mode

The OSD mode makes the adjustment of settings on all monitors easy. When selected, each tab on top of the control window displays the general descriptions of the sub-menu items for adjustment.

When selected, each tab displays a list of menus. For quick adjustment of the monitor settings, the OSD mode allows easy and convenient access to all tabs and sub-menu items.



## Button Tab Definition

---

<b>OK</b>	Applies any changes made and exits MagicTune™.
-----------	--

---

<b>Reset</b>	Restores the display settings to the factory settings.
--------------	--

---

---

## Picture Tab Definition

Allows the user to adjust the screen settings to the desired values.

---

<b>Brightness</b>	Makes the entire screen brighter or darker. The detailed data of the images in the dark areas can be lost if the brightness is not adjusted to the proper level. Adjust the brightness for best viewing conditions.
-------------------	---

---

<b>Contrast</b>	Adjusts the difference in brightness between the bright and dark areas on screen. Determines the crispness of the images.
-----------------	---

---

<b>Resolution</b>	Lists all display resolutions supported by the program.
-------------------	---

---

MagicBright™ is a new feature providing the optimum viewing environment depending on the contents of the image you are watching.

<b>MagicBright™</b>	<ol style="list-style-type: none"><li>1. Text: For documentations or works involving heavy text.</li><li>2. Internet: For working with a mixture of images such as text and graphics.</li><li>3. Game : For watching motion pictures such as a Game.</li><li>4. Sport : For watching motion pictures such as a Sport.</li><li>5. Movie: For watching motion pictures such as a DVD or Video CD.</li><li>6. Dynamic Contrast : Dynamic Contrast is to automatically detect distribution of inputted visual signal and adjust to create optimum contrast.</li><li>7. Custom: Although the values are carefully chosen by our engineers, the pre-configured values may not be comfortable to your eyes depending on your taste. If this is the case, adjust the Brightness and Contrast by using the OSD menu.</li></ol>
---------------------	---



MagicBright control mode will be different according to monitor models.  
Some monitor will only support Four modes(Text, Internet, Entertain, Custom)

---

## Color Tab Definition

Adjusts the "warmth" of the monitor background or image color.



MagicColor and Gamma will be shown only in the monitor that supports these functions.

---

The tone of the color can be changed.

- Warm2 - Warm1 - Cool 1 - Cool 2 - Cool 3 - Cool 4 - Cool 5 - Cool 6 - Cool 7
- Off

#### ColorTone



ColorTone mode will be different according to monitor models.  
Some monitor will only support Four modes( Warm, Normal, Cool, Custom)

---

#### Color Control

Adjusts of the monitor image color.  
You can change the monitor color to your desired color.

- R- G - B

---



#### Calibration

The process through which the colors of your choice are optimized and maintained. You will find MagicTune™ extremely useful if you are one of those who wish to view images with their full details accurately reproduced - including web images and ones produced by a digital camera or scanner.

---

MagicColor is a new technology that Samsung has exclusively developed to improve digital image and to display natural color more clearly without disturbing image quality.

#### MagicColor

1. OFF : Returns to the original mode.
2. DEMO : The screen before applying MagicColor appears on the right and the screen after applying MagicColor appears on the left.
3. Full : Displays not only vivid natural color but also more realistic natural skin color with clearness.
4. Intelligent : Displays vivid natural color with clearness.
5. MagicZone
  - The MagicZone ensures the clear and sharp display of animated multimedia or photo images by enhancing the brightness, sharpness, saturation, Hue of a certain area on the screen. This offers an easy-to-use interface that highlights the video-playing portion of your multimedia program by automatically detecting and highlight the desired area by dragging.
  - When the mouse cursor is activated() and it is necessary to de-activate it to use it for other tasks, right click your mouse, or put the activated cursor () on the taskbar and click. When de-activated, the icon on the screen changes back to the one shown before activation.
  - Especially, MagicZone is appropriate to using the moving picture.
  - **Auto Detect** : If you run the Movie in some players, MagicZone will automatically get the play screen highlighted (it will be supported in players of Gom, Adrenalin, KCP, Window Media, and Power DVD etc., ) Some other players also can be highlighted but could have some problems.
  - Tusk menu

---

**HUE** Adjust the tint of the color.

---

**Saturation** Adjusts the color saturation.

---

**Brightness** Adjusts the Brightness.

---

**Sharpness** Adjusts the difference between the lightest

	and darkest areas of the display.
<b>Zone Off</b>	Turn off the zone that you have captured.
<b>Reset</b>	Returns to the the default setting that vendor has set.

\*\*\*\*\*



- Depending on the monitor models **Color Control**, **Sharpness**, **Contrast**, **ColorTone** will not be adjustable in MagicColor mode of **Full and Intelligent**.
- MagicTune™ will be disappear if you excute MagicZone, and closing the MagicZone after adjusting, will show the MagicTune™ again. (System Tray is Unchecked)  
MagicTune™ will be disappear if you excute MagicZone, and closing the MagicZone after adjusting. will not show MagicTune™ again. (System Tray is Checked)
- MagicColor mode will be different according to monitor models.  
MagicZone mode will show if the monitor supports the function.

\*\*\*\*\*

Color Innovation function provides optimized color for personal favor to view effectively with WCG-CCFL which was applied to Samsung Electronics for the first time.

#### Color Innovation

- Brilliant : If you select "Brilliant", you can view a more clear and vibrant image.
- Mild : If you select "Mild", you can view a more natural and soft image.
- Custom : The pre-configured values may not be comfortable to your eyes depending on your taste. If this is the case, adjust the Picture and Color menu by using the OSD to fit your eyes.

Gamma correction changes the luminance of the colors with intermediate luminance.

#### Gamma



Gamma mode will be different according to monitor models. Some monitor will only support Three modes. ( Mode1, Mode2, Mode3)

\*\*\*\*\*

#### 6-Color

This refers to the process that optimizes the color according to the user's needs and maintains the optimized color. MagicTune™ will be helpful for users wishing to view images including web images, as well as pictures taken by a digital camera or scanner through Windows.

- Saturation - To adjust the chroma.
- Hue - To adjust the color tone.
- Reset - To reset the monitor settings to the factory defaults.

\*\*\*\*\* 

#### Image Tab Definition

Adjusts the Fine , Coarse and Position values.

- Fine : Removes noise such as horizontal stripes.  
If the noise persists even after Fine tuning, repeat it after adjusting the frequency (clock speed).

<b>Image Setup</b>	<ul style="list-style-type: none"> <li>• Coarse : Removes noise such as vertical stripes. Coarse adjustment may move the screen image area. You may relocate it to the center using the Horizontal Control menu.</li> <li>• Auto Setup : Auto adjustment allows the monitor to self-adjust to the incoming video signal. The values of fine, coarse and position are adjusted automatically.</li> </ul>
<b>Position</b>	Adjusts the screen location horizontally and vertically.
<b>Sharpness</b>	Changes the clearance of image.



## Option Tab Definition

You can configure MagicTune™ using the following options.

	Loads the Preferences Dialog Box. Preferences in use will have an "V" in the check box. To turn on or off any Preference, position the cursor over the box and click.
<b>Preferences</b>	<ul style="list-style-type: none"> <li>• Transparency</li> <li>• Enable task tray menu . <ul style="list-style-type: none"> <li>- To access the MagicTune™ menus, click the icon on the [task tray menu].</li> <li>The menus are not displayed if the [Enable System Tray] is deselected in [Options] ' [Basic Settings].</li> </ul> </li> </ul>
<b>Source Select</b>	<ul style="list-style-type: none"> <li>• Analog</li> <li>• Digital</li> </ul>
<b>Color Weakness</b>	<p>This refers to the process that optimizes the color and maintains the optimized color.</p> <ul style="list-style-type: none"> <li>• Off - To cancel Partial Color Blindness Mode.</li> <li>• Custom - Partial Color Blindness Test</li> <li>• Reset - To reset the monitor settings to the factory defaults.</li> </ul>
	When external A/V devices such as VCRs or DVDs are connected to the monitor, PIP allows you to watch video from those devices in a small window super-imposed on the PC Video signal. (Off / On)
<b>PIP</b>	<p><b>PIP</b> Turn the PIP Screen on or off.</p> <p><b>Source</b> Select the input source for the PIP.</p> <p><b>Size</b> Change the Size of the PIP window.</p> <p><b>Position</b> Change the Position of the PIP window.</p>
	<p>Applied only in specific monitors.</p> <p>Changing languages in MagicTune™ will be applied to monitor OSD (On Screen Display) languages.OSD language will be changed to current language settings of MagicTune™ .</p> <p><b>MagicBright</b> Set Customized Key to MagicBright.</p>
<b>Customized</b>	



<b>Key</b>	<b>MagicColor</b>	Set Customized Key to MagicColor.
	<b>Auto Setup</b>	Set Customized Key to Auto Setup.
	<b>Source Select</b>	Set Customized Key to Source Select
	<b>ColorTone</b>	Set Customized Key to ColorTone



## Support Tab Definition

Shows the Asset ID and the version number of the program, and allows you to use the Help feature.

<b>Help</b>	Visit the MagicTune™ website or click to open the Help files (User Manual) if you need any help installing or running MagicTune™ . The User Manual opens within a basic browser window.
	you can use the server to control the Client monitor. (Server program should be installed to use this program as Client)
	<b>When selecting the Customize checkbox at the bottom you can enter your personal information.</b>
<b>Asset ID</b>	
	<b>User Name</b> Shows the user name that is registered in PC.
	<b>User ID</b> Shows the user ID that is register in PC.
	<b>Server IP</b> Write down the server IP .
	<b>Department</b> Write down the department.
	<b>Location</b> Write down the location.
<b>Version</b>	Displays the version of MagicTune™ .

Overview | OSD Mode | **Color Calibration** | Troubleshooting

## Color Calibration



## Color Calibration

Color Calibration guides you to get optimal color condition for your monitor.

Proceed following 5steps for getting optimal monitor color condition .

1. Control "Brightness control bar" for matching the brightness of control patch and the brightness of background pattern
2. When you detect specific color tone on "Control patch", move the control cursor toward to the direction of the color tone referring to "Color reference Circle".  
=> Adjustment is finished properly, you won't detect any color tone on Control patch.
3. When you finish adjustment for step1, Click "Next" button .
4. Repeat 1), 2), 3) procedures for remaining step2 ~ step5.
5. You can easily view the calibration effect through clicking "Preview " button!

### How multiple users can use adjusted color values

#### Definition

When monitor is used by multiple users, color values which are adjusted via Color calibration for each users can be saved and used. Up to 5 users can use the saved color values.

1. How to save adjusted color values:  
Press Next to make it change into Apply and then you can save adjusted color values.  
As many as 5 values can be saved.
2. How to apply the saved color values:  
Press Multi User button on main screen to select and use one of the saved color values.



### Preview

Press "Preview" button on the Color Calibration.  
The above picture will be shown.


1. Press "View Calibrated" button to see the calibration effect which you adjusted.
2. Press "View Uncalibrated" button to see the original image.


Overview | OSD Mode | Color Calibration | **Troubleshooting**


## Troubleshooting


**The current computing system is not compatible with MagicTune™.**


 **Please press OK and click on the "Shortcut to the MagicTune™ site" to view our home page for further reference.**

 An error may occur when your video/graphic card is not in the 'Available' list.  
(The latest or oldest video cards may not be compatible.)


 Please visit our homepage to see the Troubleshooting section.


 An error may occur if the card maker has modified the video card driver or the graphics chip even when the video card is in the list.

 Please visit our homepage to see the Troubleshooting section.

 Check if your monitor is manufactured by Samsung.  
Products from other manufacturers may cause errors.

 Only Samsung products are able to support this feature.

 An error may occur even when your monitor is manufactured by Samsung but is out of date. Check if your monitor is able to support MagicTune™.

 This feature is only supported by those monitors that are registered on our homepage.  
Check for the monitor before purchasing it as out-of-date models are not supported.

- ❗ An error occurs when no information on EDID (Extended Display Identification Data) exists for the current monitor.  
This happens when from your desktop, Start → Setup → Control Panel → System → Hardware → Device Manager → Monitor is selected, the current "Plug-and-play monitor" is removed and new hardware is searched for but the system couldn't find any "Plug-and-play monitor".



Please visit our homepage to see the Troubleshooting section.

- ❗ An error occurs when replacing the monitor with a new one when the system power is off but the system has not been restarted.



Please restart the system each time the monitor is replaced before using MagicTune™.

- ❗ An error occurs when the video card driver is not installed properly.  
This happens when the current video card list is not displayed normally. You can check this via Start → Setup → System → Hardware → Device Manager → Display Adapter.



Visit the video card maker's homepage and download and install the latest driver.  
For more information about the video card, contact the card manufacturer.

---

### ? To ensure normal operation, please restart your system.

- ❗ An error occurs when the system is not restarted after installing MagicTune™.  
(This is for Win98SE and WinMe only.)



Restart the system before use.

---

### ? For the best performance of MagicTune™, adjust to the optimal resolution. Refer to the User Guide for the optimal resolution.

- ❗ If you do not adjust to the optimal resolution and perform Color Calibration, the monitor cannot be adjusted to the optimal condition.



Refer to the manual for the optimal resolution.

---

### ? This video card does not support MagicTune™. Please install a new video card driver.

- ❗ An error occurs when the video card driver is not installed properly.  
This happens when the current video card list is not displayed normally. You can check this from Start → Setup → System → Hardware → Device Manager → Display Adapter.



Visit the video card manufacturer's homepage and download and install the latest driver.  
For more information about the video card, contact the card manufacturer.

---

### ? As the Highlight program uses the communication lines, please exit the Highlight program before you can access MagicTune™.

- ❗ Some of Samsung CDT monitors support the Highlight feature.  
When using both the Highlight feature and MagicTune™ simultaneously, conflicts occur, which cause errors.



Make sure to turn OFF Highlight before using MagicTune™.

---

## Troubleshooting

- MagicTune™ may not work in case monitor is replaced or driver of graphic card is updated while MagicTune™ is operating. If so, please restart the system.

Symptom	Check List	Solutions
Check when MagicTune™ does not function properly.	MagicTune™ feature is found only on PC (VGA) with Window OS that supports Plug and Play.	<p>* To check whether your PC is available for MagicTune™ feature, follow the steps below (When Windows® is XP);</p> <p>Control Panel → Performance and Maintenance → System → Hardware → Device Manager → Monitors → After deleting Plug and Play monitor, find 'Plug and Play monitor' by searching new Hardware.</p> <p>MagicTune™ is an additional software for the monitor. Some graphic cards may not support your monitor. When you have a problem with the graphic card, visit our website to check the compatible graphic card list provided.  <a href="http://www.samsung.com/monitor/magicTune">http://www.samsung.com/monitor/magicTune</a></p>
MagicTune™ doesn't work properly.	<p>Have you changed your PC or video graphic card?</p> <p>Did you install the program?</p>	<p>Download the latest program. The program can be downloaded  <a href="http://www.samsung.com/monitor/magictune">http://www.samsung.com/monitor/magictune</a>.</p> <p>Reboot the computer after installing the program for the first time. If a copy of the program is already installed, remove it, reboot the computer, and then install the program again. You need to reboot the computer for it to operate normally after installing or removing the program.</p>

- Visit the MagicTune™ [website](#) for technical support for MagicTune™, FAQs (questions and answers) and software upgrades.
- Visit the MagicTune™ [website](#) and download the installation software for MagicTune™ MAC.

The MagicTune™ program is an additional program for monitor products.  
Some computing systems that install either an older or the latest video driver are not compatible with MagicTune™.  
Please visit the MagicTune™ Website for technical support for MagicTune™.

Specifications subject to change without notice.  
MagicTune™ is a trademark of SAMSUNG ELECTRONICS CO., Inc.  
Windows™ is a registered trademark of Microsoft Corp.  
Other trademarks are property of their respective holders.



Overview

| Interface

| Troubleshooting

## Overview



## ● What is MagicRotation?



Traditionally, computer displays allowed the user to view only in landscape mode. In today's information age, more users need to view documents, web pages, emails, etc. in their day to day life. These types of applications can be better viewed in portrait mode where the entire contents are available on the screen. This greatly improves the user's productivity allowing him the flexibility to switch between landscape and portrait modes.

The MagicRotation Software from Samsung Electronics, Inc. provides the user with a rotation feature (0, 90, 180, 270 orientation) that facilitates the optimum utilization of computer display screen, better viewing and improved user productivity.

---

## ● Basic Function

MagicRotation will support Windows® 2000, XP Home and XP Professional.

\* Windows® is registered trademark of Microsoft Corporation, Inc.

Overview

| **Interface**

| Troubleshooting

- 
- **When Rotation is functioning, part of MagicTune™ Program may not operate normally.**
  - **AutoRotation : AutoRotation will automatically AutoRotations the monitor to 0, 90, 180degrees when you AutoRotations the monitor.**

**To execute AutoRotation, it should be done as below.**

- Please install both of Rotation program and MagicTune™ in your PC.
- Launch MagicTune™
- **Option → Preference → click the small box as "V" in enable task tray menu.**

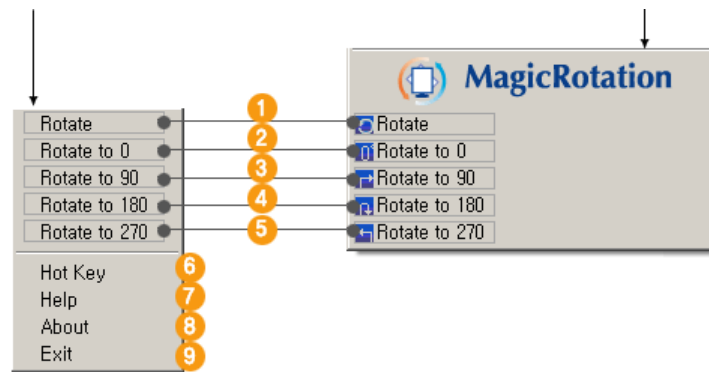
**\* The angle of rotation may vary depending on your monitor spec.**

---

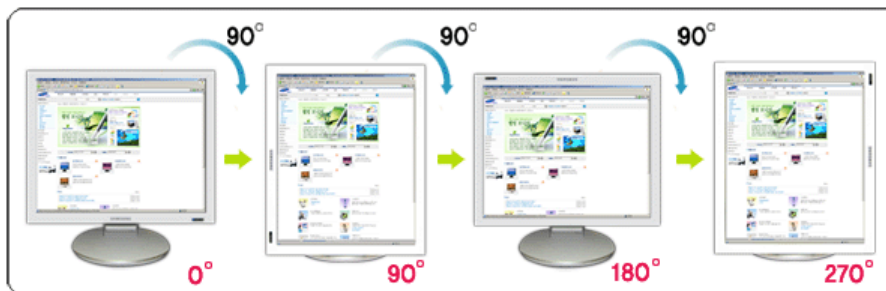
## ● Interface

The Menu on task bar

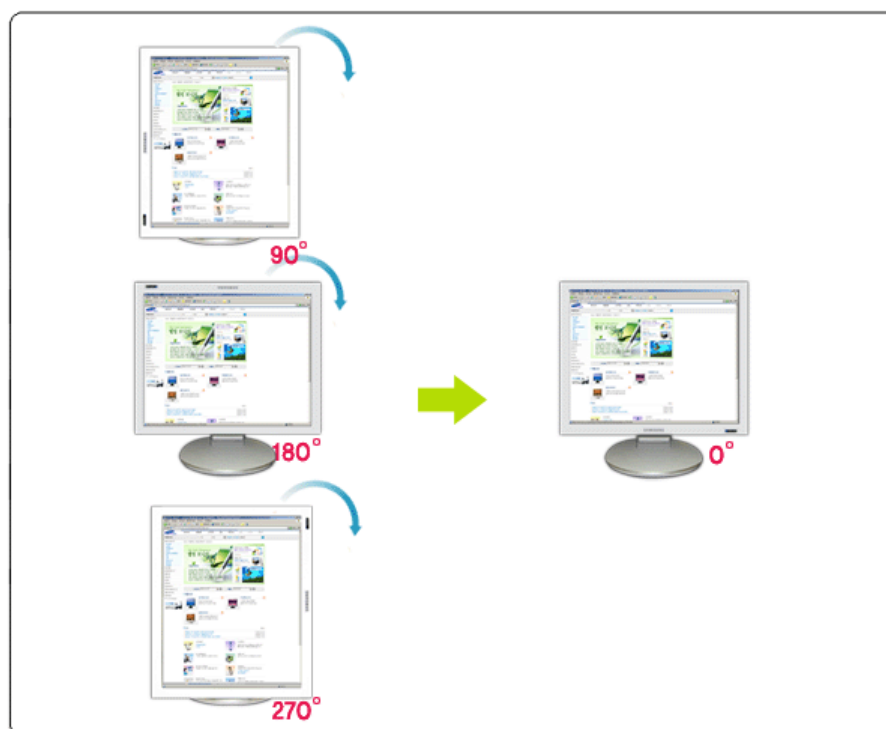
Menu pop up at the mouse right button click.



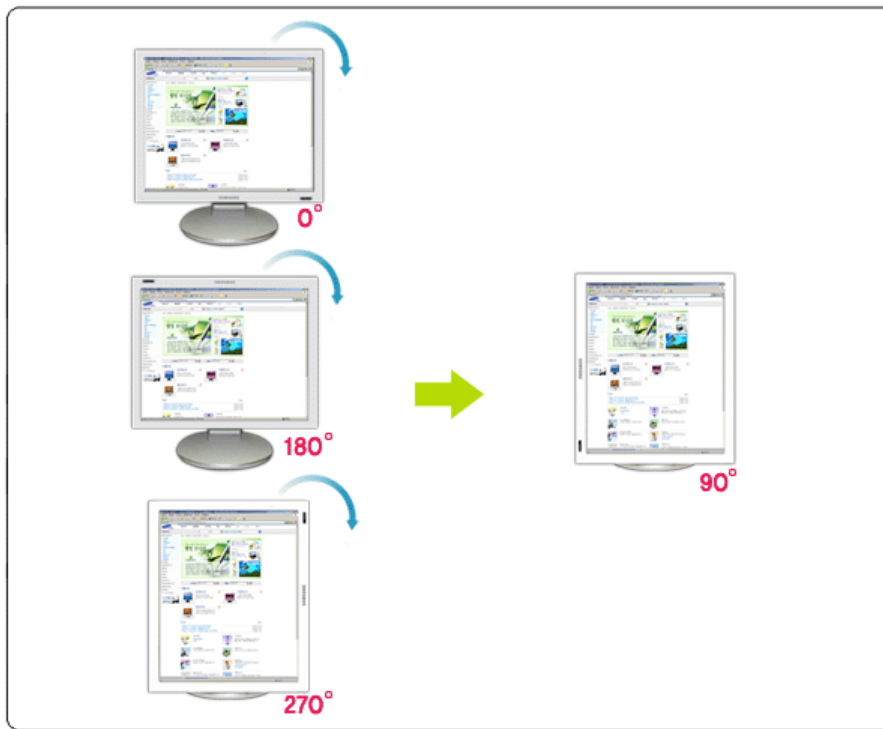
1 **Rotate** : Display will get rotated by the unit of 90 degree



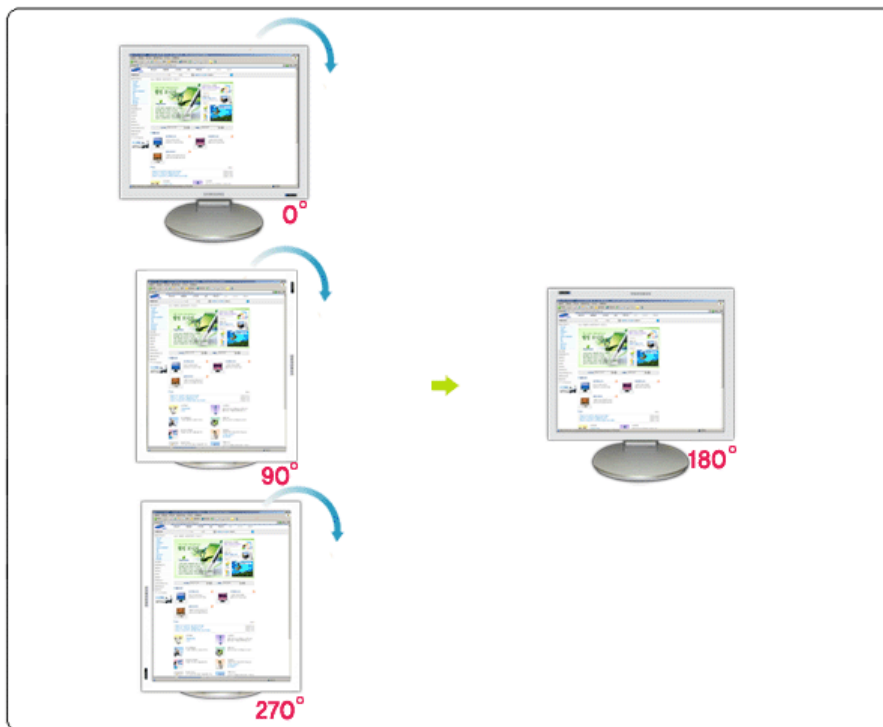
2 **Rotate to 0** : Display will get rotated to 0 degree from the current angle of rotation.



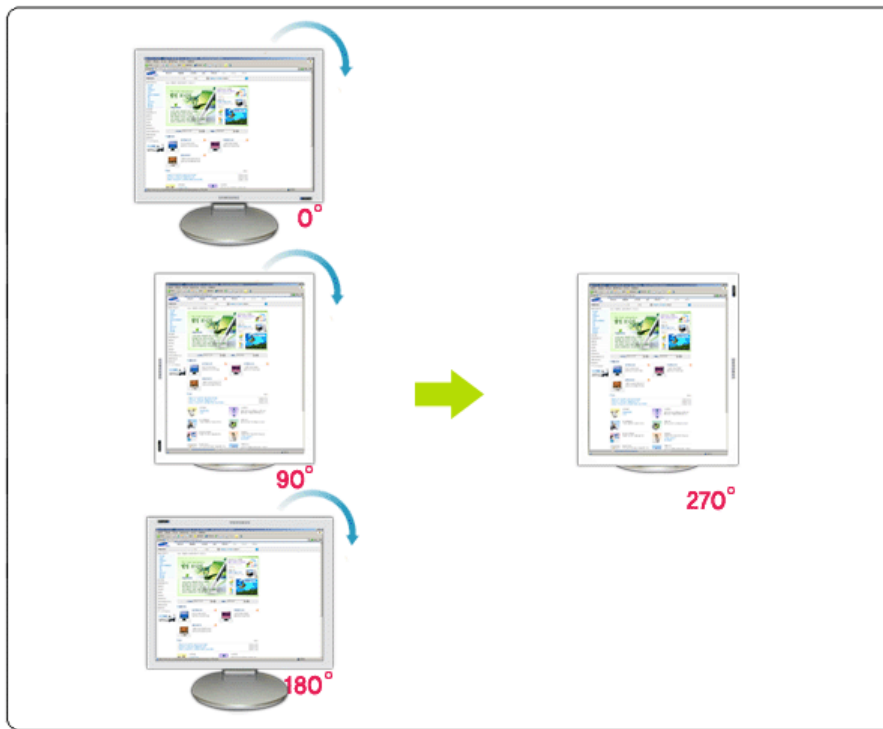
3 **Rotate to 90** : Display will get rotated to 90 degree from the current angle of rotation.



**4 Rotate to 180** : Display will get rotated to 180 degree from the current angle of rotation.



**5 Rotate to 270** : Display will get rotated to 270 degree from the current angle of rotation.



- .....
- 6 Hot key :** Hot Keys are available by default and can be changed by user. It can be assigned by user directly with keyboard after changing the existing HotKey. User can create the hot key with the combination of Shift, Ctrl, Alt and general keys. In case only general key is pressed, it will be assigned in the form of Alt+general key.

- .....
- 7 Help :** It shows the HELP of MagicRotation program.

- .....
- 8 About :** It shows the version and copyright of MagicRotation program.

- .....
- 9 Exit :** It exits from MagicRotation program.

Overview

| Interface

| Troubleshooting

## Troubleshooting

### ● Before You Call Technical Support

- MagicRotation Software works with the installed "Display Driver" supplied by your Graphic Card Vendor to provide screen rotation capabilities. If the installed "Display Driver" is working incorrectly or has bugs in it, then these bugs would still exist even after MagicRotation Software is installed. Any incorrect/random behaviour resulting due to problems in the installed "Display Driver" are not due to MagicRotation Software.

In order to verify if a problem exists in the installed "Display Driver" , you can perform the following diagnostic steps :

1. Check if the problem is occurring in both 0 orientation (Landscape mode) and 90 orientation (Portrait mode).



2. Check if the problem occurs with different color depths (8/16/32 bits per pixel) and different resolution modes (800 x 600, 1024 x 768).
3. Check if the problem occurs without installing MagicRotation Software.

If the problem is repeating in any/all of the following scenarios then it may be the problem with your installed "Display Driver" :

In order to correct the problem you need to perform the following steps :

1. Uninstall MagicRotation Software.
  2. Obtain the latest "Display Driver" from your Graphic Card Vendor.  
The latest "Display Driver" from (ATI, NVIDIA, MATROX, INTEL, etc.) are easily available for download from their respective websites.
  3. Install the latest "Display Driver"
  4. Install MagicRotation Software. In most of the cases this should correct the problem.
- MagicRotation may not work in case monitor is replaced or driver of graphic card is updated while MagicRotation is operating.  
If so, please restart the system.
  - Visit the MagicRotation [website](#) for technical support for MagicRotation, FAQs (questions and answers) and software upgrades.

The specifications are subject to change without notice.  
MagicRotation is a trademark of SAMSUNG ELECTRONICS CO., LTD.  
All other product trademarks mentioned in this document may be registered trademarks of their respective companies.

The color and appearance of the product may vary depending on the model, and the product specifications are subject to change without prior notice for reasons of performance enhancement.

■ Safety Instructions ■ Introduction ■ Setup ■ Program ■ Troubleshooting ■ Specifications ■ Information

↑ TOP

↶ MAIN

↑ ↻

Check List

Q & A

Self-Test Feature Check

## Check List



Before calling for service, check the information in this section to see if you can remedy any problems yourself. If you do need assistance, please call [the phone number on the Information section](#) or [contact your dealer](#).

Symptom	Check List	Solutions
No images on the screen. I cannot turn on the monitor.	Is the power cord connected properly?	Check the power cord connection and supply.
	Can you see <b>"No Connection Check Signal Cable"</b> on the screen?	<b>(When connecting 'DVI-A to D-Sub' Cable)</b> Check the signal cable connection. <b>(When connecting DVI cable)</b> If the message appears on the screen, even when the cable is properly connected, check the video source of the monitor by using the Power button on the front panel of the monitor. This may happen because the monitor is set to Analog.
	If the power is on, reboot the computer to see the initial screen (the login screen), which can be seen.	If the initial screen (the login screen) appears, boot the computer in the applicable mode (the safe mode for Windows ME/XP/2000) and then change the frequency of the video card. (Refer to the <a href="#">Preset Timing Modes</a> )
	Can you see <b>"Not Optimum Mode", "Recommended Mode 1280 x 1024 60 Hz"</b> on the screen?	Note: If the initial screen (the login screen) does not appear, <a href="#">contact the Service Center or your dealer</a> .  You can see this message when the signal from the video card exceeds the maximum resolution and frequency that the monitor can properly handle.  Adjust the maximum resolution and frequency that the monitor can properly handle.
	There is no image on the screen.	The monitor is in PowerSaver mode.  Press any key on the keyboard to activate the monitor and restore the image on the screen.  If the monitor does not respond, activate the source conversion feature located on the front of the monitor, or try moving the mouse or pressing a key on the keyboard again.

	Is the monitor connected using the DVI cable?	You may get a blank screen if you boot the system before you connect the DVI cable, or disconnect and then reconnect the DVI cable while the system is running as certain types of graphic cards do not send out video signals. Connect the DVI cable and then reboot the system.
The screen shows strange colors or just black and white.	Is the screen displaying only one color as if looking at the screen through a cellophane paper?	Check the signal cable connection. Make sure the video card is fully inserted in it's slot.
	Have the screen colors become strange after running a program or due to a crash between applications?	Reboot the computer.
	Has the video card been set properly?	Set the video card by referring to the video card manual.
The screen suddenly has become unbalanced.	Have you changed the video card or the driver?	Adjust screen image position and size using the MagicTune™ program.
	Have you adjusted the resolution or frequency to the monitor?	Adjust the resolution and frequency at the video card. (Refer to the <a href="#">Preset Timing Modes</a> ).
	The screen can be unbalanced due to the cycle of the video card signals. Readjust position by referring to the MagicTune™ program.	
The screen is out of focus.	Have you adjusted the resolution or frequency on the monitor?	Adjust the resolution and frequency of the video card. (Refer to the <a href="#">Preset Timing Modes</a> ).
There are only 16 colors shown on the screen. The screen colors have changed after changing the video card.	Have the Windows colors been set properly?	Windows ME/2000/XP: Set the colors properly at the <b>Control Panel → Display → Settings</b> .
	Has the video card been set properly?	Set the video card by referring to the video card manual.
There is a message that reads "Unrecognized monitor, Plug & Play (VESA DDC) monitor found".	Have you installed the monitor driver?  See the video card manual to see if the Plug & Play (VESA DDC) function can be supported.	Install the monitor driver according to the <a href="#">Driver Installation Instructions</a> .
Check when MagicTune™ does not function properly.	MagicTune™ feature is found only on PC (VGA) with Window OS that supports Plug and Play.	* To check whether your PC is available for MagicTune™ feature, follow the steps below (When Windows™ is XP);  Control Panel → Performance and Maintenance → System → Hardware → Device Manager → Monitors → After deleting Plug and Play monitor, find 'Plug and Play monitor' by searching new Hardware.  MagicTune™ is an additional software for the monitor. Some graphic cards may not support your monitor. When you have a problem with the graphic card, visit our website to check the compatible graphic card list provided. <a href="http://www.samsung.com/monitor/magictune">http://www.samsung.com/monitor/magictune</a>
MagicTune™ doesn't work properly.	Have you changed your PC or video	Download the latest program. The program can be downloaded

graphic card?

<http://www.samsung.com/monitor/magictune>

Did you install the program?

Reboot the computer after installing the program for the first time. If a copy of the program is already installed, remove it, reboot the computer, and then install the program again. You need to reboot the computer for it to operate normally after installing or removing the program.



Visit our website and download the installation software for MagicTune™ MAC.



#### Check the following items if there is trouble with the monitor.

1. Check if the power cord and the video cables are properly connected to the computer.
2. Check if the computer beeps more than 3 times when booting.  
(If it does, request an after-service for the main board of the computer.)
3. If you installed a new video card or if you assembled the PC, check if the installed the adapter (video) driver and the monitor driver.
4. Check if the scanning ratio of the video screen is set at 56 Hz ~ 75 Hz.  
(Do not exceed 60 Hz when using the maximum resolution.)
5. If you have problems in installing the adapter (video) driver, boot the computer in Safe Mode, remove the Display Adapter at the "**Control Panel→System→Device Administrator**" and then reboot the computer to reinstall the adapter (video) driver.



If problems repeatedly occur, [contact an authorized service center](#).

[Check List](#)

[Q & A](#)

[Self-Test Feature Check](#)



#### Q & A

Question	Answer
How can I change the frequency?	Frequency can be changed by reconfiguring the video card.  Note that video card support can vary, depending on the version of the driver used. (Refer to the computer or the video card manual for details.)
How can I adjust the resolution?	Windows ME/XP/2000 : Set the resolution at the <b>Control Panel→Display→Settings</b> .  * Contact the video card manufacturer for details.
How can I set the Power Saving function?	Windows ME/XP/2000 : Set the function at BIOS-SETUP of the computer or the screen saver. (Refer to Windows/Computer Manual).
How can I clean the outer case/LCD Panel?	Disconnect the power cord and then clean the monitor with a soft cloth, using either a cleaning solution or plain water.  Do not leave any remains of the detergent nor scratch the case. Do not allow any water to go inside the monitor.

[Check List](#)

[Q & A](#)

[Self-Test Feature Check](#)



#### Self-Test Feature Check

[Self-Test Feature Check](#) | [Warning Messages](#) | [Environment](#) | [Useful Tips](#)

Your monitor provides a self test feature that allows you to check whether your monitor is

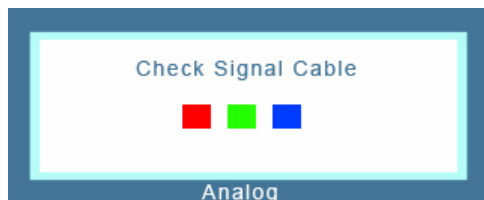
functioning properly.

---

### ● Self-Test Feature Check

1. Turn off both your computer and the monitor.
2. Unplug the video cable from the back of the computer.
3. Turn on the monitor.

If the monitor is functioning properly, you will see a box in the illustration below.



This box appears during normal operation if the video cable becomes disconnected or damaged.

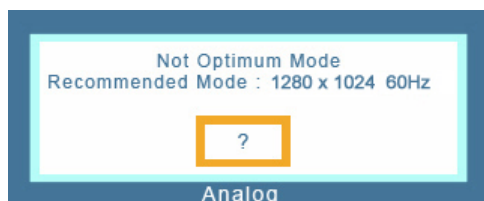
4. Turn off your monitor and reconnect the video cable; then turn on both your computer and the monitor.

If your monitor screen remains blank after using the previous procedure, check your video controller and computer system; your monitor is functioning properly.

---

### ● Warning Messages

If there is something wrong with the input signal, the message below appears on the screen or the screen goes blank although the power indicator LED is still on. The message may indicate that the monitor is out of scan range or that you need to check the signal cable.



### ● Environment

**The location and the position of the monitor may influence the quality and other features of the monitor.**

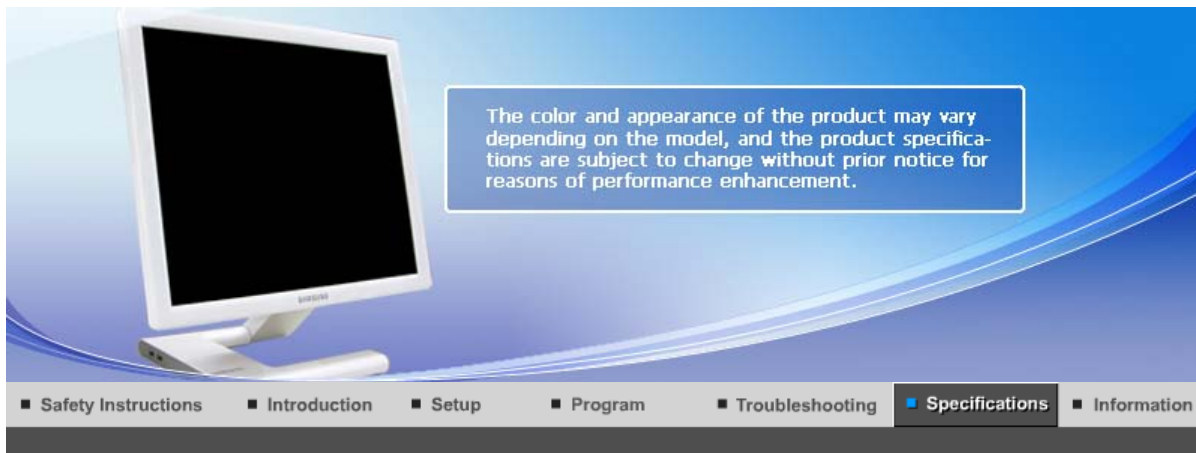
1. If there are any sub woofer speakers near the monitor, unplug and relocate the woofer to another room.
  2. Remove all electronic devices such as radios, fans, clocks and telephones that are within 3 feet (one meter) of the monitor.
- 

### ● Useful Tips

- A monitor recreates visual signals received from the computer. Therefore, if there is trouble with the computer or the video card, this can cause the monitor to become blank, have poor coloring, noise, video mode not supported, etc. In this case, first check the source of the problem, and then contact a service center or your dealer.
- **Judging the monitor's working condition**  
If there is no image on the screen or a **"Not Optimum Mode", "Recommended Mode 1280 x 1024 60 Hz"** message comes up, disconnect the cable from the computer while the monitor is still powered on.
  - If there is a message coming up on the screen or if the screen goes white, this means the monitor is in working condition.
  - In this case, check the computer for trouble.



Model SyncMaster 971P ▼

[General](#) | [PowerSaver](#) | [Preset Timing Modes](#) |

## General

### General

Model Name SyncMaster 971P

### LCD Panel

Size 19" Diagonal (48 cm)

Display area 376.32 mm (H) x 301.056 mm (V)

Pixel Pitch 0.294 mm (H) x 0.294 mm (V)

### Synchronization

Horizontal 30 ~ 81 kHz

Vertical 56 ~ 75 Hz

### Display Color

16.7 M Colors

### Resolution

Optimum resolution 1280 x 1024@60 Hz

Maximum resolution 1280 x 1024@75 Hz

### Input Signal, Terminated

RGB Analog, DVI(Digital Visual Interface) Compliant Digital RGB  
0.7 Vp-p±5 %, positive bright 75 Ω±10 %  
Separate H/V sync, Composite, SOG, TTL level, positive or negative

### Maximum Pixel Clock

140 MHz

### Power Supply

AC 100 - 240 VAC +/-10 %, 60/50 Hz ± 3 Hz

### Signal Cable

'DVI-A to D-SUB' Cable , Detachable  
DVI-I to DVI-I connector, Detachable (Option)

### Dimensions (WxHxD)/ Weight

423 x 433 x 228 mm(16.7 x 17 x 9 inch) / 6 kg / 13.2 lbs  
348 x 72 x 425 mm(13.7 x 2.8 x 16.7 inch) / 6 kg / 13.2 lbs (When the stand is folded)

## Environmental considerations

Operating	Temperature: 50 °F ~ 104 °F (10 °C ~ 40 °C) Humidity: 10 % ~ 80 %, non-condensing
Storage	Temperature: -4 °F ~ 113 °F (-20 °C ~ 45 °C) Humidity: 5 % ~ 95 %, non-condensing

## Plug and Play Capability

This monitor can be installed on any Plug & Play compatible system. Interaction of the monitor and computer systems will provide the best operating conditions and monitor settings. In most cases, monitor installation will proceed automatically, unless the user wishes to select alternate settings.

## Dot Acceptable

TFT LCD panel manufactured by using advanced semiconductor technology with precision of 1ppm (one millionth) above is used for this product. But the pixels of RED, GREEN, BLUE and WHITE color seem to be bright sometimes or some of black pixels could be seen. This is not from bad quality and you can use it without uneasiness.

- For example, the number of TFT LCD sub pixels that is contained in this product are 3,932,160.

**Note: Design and specifications are subject to change without prior notice.**

## Class B Equipment (Information Communication equipment for residential use)

This product complies with the Electromagnetic Compatibility Directives for residential use and can be used in all areas including common residential areas.  
(Class B equipment emits less electromagnetic waves than Class A equipment.)



Though their model names (**pet names**) are same, the products may have different performance or specifications depending on the model code.

General | **PowerSaver** | Preset Timing Modes

## PowerSaver

This monitor has a built-in power management system called PowerSaver. This system saves energy by switching your monitor into a low-power mode when it has not been used for a certain amount of time. The monitor automatically returns to normal operation when you press a key on the keyboard. For energy conservation, turn your monitor OFF when it is not needed, or when leaving it unattended for long periods. The PowerSaver system operates with a VESA DPMS compliant video card installed in your computer. Use a software utility installed on your computer to set up this feature.

State	Normal Operation	Power saving mode	Power off EPA/ENERGY 2000
Power Indicator	Blue	Off	Off
Power Consumption	Less than 36 W	Less than 1 W (Off-mode)	Less than 1 W



This monitor is EPA ENERGY STAR® compliant and ENERGY2000 compliant when used with a computer equipped with VESA DPMS functionality.

As an ENERGY STAR® Partner, SAMSUNG has determined that this product meets the ENERGY STAR® guidelines for energy efficiency.

General | PowerSaver | **Preset Timing Modes**

## **Preset Timing Modes**

If the signal transferred from the computer is the same as the following Preset Timing Modes, the screen will be adjusted automatically (Exception : 640 x 480/60 Hz, 720 x 400/70Hz, 800 x 600/60 Hz) However, if the signal differs, the screen may go blank while the power LED is on. Refer to the video card manual and adjust the screen as follows.

**Table 1. Preset Timing Modes**

Display Mode	Horizontal Frequency (kHz)	Vertical Frequency (Hz)	Pixel Clock (MHz)	Sync Polarity (H/V)
IBM, 640 x 350	31.469	70.086	25.175	+/-
IBM, 640 x 480	31.469	59.940	25.175	-/-
IBM, 720 x 400	31.469	70.087	28.322	-/+
MAC, 640 x 480	35.000	66.667	30.240	-/-
MAC, 832 x 624	49.726	74.551	57.284	-/-
MAC, 1152 x 870	68.681	75.062	100.00	-/-
VESA, 640 x 480	37.861	72.809	31.500	-/-
VESA, 640 x 480	37.500	75.000	31.500	-/-
VESA, 800 x 600	35.156	56.250	36.000	+/+
VESA, 800 x 600	37.879	60.317	40.000	+/+
VESA, 800 x 600	48.077	72.188	50.000	+/+
VESA, 800 x 600	46.875	75.000	49.500	+/+
VESA, 1024 x 768	48.363	60.004	65.000	-/-
VESA, 1024 x 768	56.476	70.069	75.000	-/-
VESA, 1024 x 768	60.023	75.029	78.750	+/+
VESA, 1152 x 864	67.500	75.000	108.00	+/+
VESA, 1280 x 960	60.000	60.000	108.00	+/+
VESA, 1280 x 1024	63.981	60.020	108.00	+/+
VESA, 1280 x 1024	79.976	75.025	135.00	+/+

### Horizontal Frequency

The time to scan one line connecting the right edge to the left edge of the screen horizontally is called Horizontal Cycle and the inverse number of the Horizontal Cycle is called Horizontal Frequency. Unit: kHz



### Vertical Frequency

Like a fluorescent lamp, the screen has to repeat the same image many times per second to display an image to the user. The frequency of this repetition is called Vertical Frequency or Refresh Rate. Unit: Hz





Model SyncMaster 971P ▼



Contact SAMSUNG WORLDWIDE | Terms | For Better Display | Authority | Image Retention Free | Correct Disposal |

## Contact SAMSUNG WORLDWIDE



If you have any questions or comments relating to Samsung products, please contact the SAMSUNG customer care center.

### North America

U.S.A	1-800-SAMSUNG (7267864)	<a href="http://www.samsung.com">http://www.samsung.com</a>
CANADA	1-800-SAMSUNG (7267864)	<a href="http://www.samsung.com/ca">http://www.samsung.com/ca</a>
MEXICO	01-800-SAMSUNG (7267864)	<a href="http://www.samsung.com/mx">http://www.samsung.com/mx</a>

### Latin America

ARGENTINE	0800-333-3733	<a href="http://www.samsung.com/ar">http://www.samsung.com/ar</a>
BRAZIL	4004-0000	<a href="http://www.samsung.com/br">http://www.samsung.com/br</a>
CHILE	800-726-7864 (SAMSUNG)	<a href="http://www.samsung.com/cl">http://www.samsung.com/cl</a>
COLOMBIA	01-8000112112	<a href="http://www.samsung.com.co">http://www.samsung.com.co</a>
COSTA RICA	0-800-507-7267	<a href="http://www.samsung.com/latin">http://www.samsung.com/latin</a>
ECUADOR	1-800-10-7267	<a href="http://www.samsung.com/latin">http://www.samsung.com/latin</a>
EL SALVADOR	800-6225	<a href="http://www.samsung.com/latin">http://www.samsung.com/latin</a>
GUATEMALA	1-800-299-0013	<a href="http://www.samsung.com/latin">http://www.samsung.com/latin</a>
JAMAICA	1-800-234-7267	<a href="http://www.samsung.com/latin">http://www.samsung.com/latin</a>
PANAMA	800-7267	<a href="http://www.samsung.com/latin">http://www.samsung.com/latin</a>
PUERTO RICO	1-800-682-3180	<a href="http://www.samsung.com/latin">http://www.samsung.com/latin</a>
REP. DOMINICA	1-800-751-2676	<a href="http://www.samsung.com/latin">http://www.samsung.com/latin</a>
TRINIDAD & TOBAGO	1-800-7267-864	<a href="http://www.samsung.com/latin">http://www.samsung.com/latin</a>
VENEZUELA	0-800-100-5303	<a href="http://www.samsung.com/latin">http://www.samsung.com/latin</a>

### Europe

BELGIUM	02 201 2418	<a href="http://www.samsung.com/be">http://www.samsung.com/be</a>
CZECH REPUBLIC	844 000 844	<a href="http://www.samsung.com/cz">http://www.samsung.com/cz</a>
Distributor pro Českou republiku: Samsung Zrt., česká organizační složka Vyskočilova 4, 14000 Praha 4		
DENMARK	70 70 19 70	<a href="http://www.samsung.com/dk">http://www.samsung.com/dk</a>
FINLAND	030-6227 515	<a href="http://www.samsung.com/fi">http://www.samsung.com/fi</a>
FRANCE	3260 SAMSUNG(7267864) (€ 0,15/min)	<a href="http://www.samsung.com/fr">http://www.samsung.com/fr</a>
GERMANY	01805-121213 (€ 0,14/Min)	<a href="http://www.samsung.de">http://www.samsung.de</a>
HUNGARY	06-80-SAMSUNG (7267864)	<a href="http://www.samsung.com/hu">http://www.samsung.com/hu</a>
ITALIA	800 SAMSUNG (7267864)	<a href="http://www.samsung.com/it">http://www.samsung.com/it</a>
LUXEMBURG	0032 (0)2 201 24 18	<a href="http://www.samsung.lu">http://www.samsung.lu</a>
NETHERLANDS	0900 20 200 88 (€ 0,10/Min)	<a href="http://www.samsung.com/nl">http://www.samsung.com/nl</a>
NORWAY	815-56 480	<a href="http://www.samsung.com/no">http://www.samsung.com/no</a>
POLAND	0 801 801 881	<a href="http://www.samsung.com/pl">http://www.samsung.com/pl</a>
PORTUGAL	80 8 200 128	<a href="http://www.samsung.com/pt">http://www.samsung.com/pt</a>
REPUBLIC OF IRELAND	0818 717 100	<a href="http://www.samsung.com/uk">http://www.samsung.com/uk</a>
SLOVAKIA	0800-SAMSUNG (7267864)	<a href="http://www.samsung.com/sk">http://www.samsung.com/sk</a>
SPAIN	902 10 11 30	<a href="http://www.samsung.com/es">http://www.samsung.com/es</a>
SWEDEN	0771-400 200	<a href="http://www.samsung.com/se">http://www.samsung.com/se</a>
SWITZERLAND	0800-7267864	<a href="http://www.samsung.com/ch">http://www.samsung.com/ch</a>
U.K	0870 SAMSUNG (7267864)	<a href="http://www.samsung.com/uk">http://www.samsung.com/uk</a>

CIS		
ESTONIA	800-7267	<a href="http://www.samsung.ee">http://www.samsung.ee</a>
LATVIA	800-7267	<a href="http://www.samsung.com/lv">http://www.samsung.com/lv</a>
LITHUANIA	8-800-77777	<a href="http://www.samsung.lt">http://www.samsung.lt</a>
KAZAKHSTAN	8 800 080 1188	<a href="http://www.samsung.kz">http://www.samsung.kz</a>
RUSSIA	8-800-200-0400	<a href="http://www.samsung.ru">http://www.samsung.ru</a>
UKRAINE	8-800-502-0000	<a href="http://www.samsung.com/ur">http://www.samsung.com/ur</a>
UZBEKISTAN	140-1234	<a href="http://www.samsung.uz">http://www.samsung.uz</a>

Asia Pacific		
AUSTRALIA	1300 362 603	<a href="http://www.samsung.com/au">http://www.samsung.com/au</a>
CHINA	800-810-5858, 010- 6475 1880	<a href="http://www.samsung.com.cn">http://www.samsung.com.cn</a>
HONG KONG	3698-4698	<a href="http://www.samsung.com/hk">http://www.samsung.com/hk</a>
INDIA	3030 8282, 1800 1100 11	<a href="http://www.samsung.com/in">http://www.samsung.com/in</a>
INDONESIA	0800-112-8888	<a href="http://www.samsung.com/id">http://www.samsung.com/id</a>
JAPAN	0120-327-527	<a href="http://www.samsung.com/jp">http://www.samsung.com/jp</a>
MALAYSIA	1800-88-9999	<a href="http://www.samsung.com/my">http://www.samsung.com/my</a>

PHILIPPINES	1800-10-SAMSUNG (7267864)	<a href="http://www.samsung.com/ph">http://www.samsung.com/ph</a>
SINGAPORE	1800-SAMSUNG (7267864)	<a href="http://www.samsung.com/sg">http://www.samsung.com/sg</a>
THAILAND	1800-29-3232, 02-689-3232	<a href="http://www.samsung.com/th">http://www.samsung.com/th</a>
TAIWAN	0800-329-999	<a href="http://www.samsung.com/tw">http://www.samsung.com/tw</a>
VIETNAM	1 800 588 889	<a href="http://www.samsung.com/vn">http://www.samsung.com/vn</a>

Middle East & Africa		
SOUTH AFRICA	0860 7267864 (SAMSUNG)	<a href="http://www.samsung.com/za">http://www.samsung.com/za</a>
U.A.E	800SAMSUNG (7267864) 8000-4726	<a href="http://www.samsung.com/mea">http://www.samsung.com/mea</a>

[Contact SAMSUNG WORLDWIDE](#) | [Terms](#) | [For Better Display](#) | [Authority](#) | [Image Retention Free](#) | [Correct Disposal](#) |

## Terms

### • Dot Pitch

The image on a monitor is composed of red, green and blue dots. The closer the dots, the higher the resolution. The distance between two dots of the same color is called the 'Dot Pitch'. Unit: mm

### • Vertical Frequency

The screen must be redrawn several times per second in order to create and display an image for the user. The frequency of this repetition per second is called Vertical Frequency or Refresh Rate. Unit: Hz

Example: If the same light repeats itself 60 times per second, this is regarded as 60 Hz.

### • Horizontal Frequency

The time to scan one line connecting the right edge to the left edge of the screen horizontally is called Horizontal Cycle. The inverse number of the Horizontal Cycle is called Horizontal Frequency. Unit: kHz

### • Interlace and Non-Interlace Methods

Showing the horizontal lines of the screen from the top to the bottom in order is called the Non-Interlace method while showing odd lines and then even lines in turn is called the Interlace method. The Non-Interlace method is used for the majority of monitors to ensure a clear image. The Interlace method is the same as that used in TVs.

### • Plug & Play

This is a function that provides the best quality screen for the user by allowing the computer and the monitor to exchange information automatically. This monitor follows the international standard VESA DDC for the Plug & Play function.

### • Resolution

The number of horizontal and vertical dots used to compose the screen image is called 'resolution'. This number shows the accuracy of the display. High resolution is good for performing multiple tasks as more image information can be shown on the screen.

Example: If the resolution is 1280 x 1024, this means the screen is composed of 1280 horizontal dots (horizontal resolution) and 1024 vertical lines (vertical resolution).

[Contact SAMSUNG WORLDWIDE](#) | [Terms](#) | [For Better Display](#) | [Authority](#) | [Image Retention Free](#) | [Correct Disposal](#) |

## For Better Display

1. Adjust computer resolution and screen injection rate (refresh rate) on computer as described below to enjoy the best quality of picture. You can have an uneven quality of picture in the screen if the best quality of picture is not provided in TFT-LCD.
  - o Resolution: 1280 x 1024
  - o Vertical frequency (refresh rate): 60 Hz
2. TFT LCD panel manufactured by using advanced semiconductor technology with precision of 1ppm (one millionth) above is used for this product. But the pixels of RED, GREEN, BLUE and WHITE color seem to be bright sometimes or some of black pixels could be seen. This is not from bad quality and you can use it without uneasiness.
  - o For example, the number of TFT LCD sub pixels that is contained in this product are 3,932,160.
3. When you clean the monitor and the panel outside, please apply the recommended small amount of cleaner by using soft and dry cloth and polish it. Let LCD area not to be forced but to be scrubbed out softly.  
If excessive force is applied, you can have a stain on it.
4. If you are not satisfied with the quality of picture, you can get better quality of picture by executing "auto adjustment function" in display screen that is appeared as window termination button is pressed.  
If there's still noise after automatic adjustment, use FINE/COARSE adjustment function.
5. If you view a fixed screen for an extended period of time, residual image or blurriness may appear.  
Change the mode to energy save or set a screensaver to moving picture when you need to be away from the monitor for an extended period of time.

---

[Contact SAMSUNG WORLDWIDE](#) | [Terms](#) | [For Better Display](#) | [Authority](#) | [Image Retention Free](#) | [Correct Disposal](#) |

#### **Authority**

**Information in this document is subject to change without notice.**  
**© 2007 Samsung Electronics Co., Ltd. All rights reserved.**

Reproduction in any manner whatsoever without the written permission of Samsung Electronics Co., Ltd. is strictly forbidden.

Samsung Electronics Co., Ltd. shall not be liable for errors contained herein or for incidental or consequential damages in connection with the furnishing, performance, or use of this material.

*Samsung* is the registered trademark of Samsung Electronics Co., Ltd.; *Microsoft*, *Windows* and *Windows NT* are registered trademarks of Microsoft Corporation; *VESA*, *DPMS* and *DDC* are registered trademarks of Video Electronics Standard Association; the *ENERGY STAR*® name and logo are registered trademarks of the U.S. Environmental Protection Agency (EPA). As an ENERGY STAR® Partner, Samsung Electronics Co., Ltd. has determined that this product meets the ENERGY STAR® guidelines for energy efficiency. All other product names mentioned herein may be the trademarks or registered trademarks of their respective owners.



**MÉXICO**

IMPORTADO POR: SAMSUNG ELECTRONICS MÉXICO. S.A. de C.V.  
Vía Lopez Portillo No. 6, Col. San Fco. Chilpan  
Tultitlán, Estado de México, C.P. 54940  
Tel: 01-55-5747-5100 / 01-800-726-7864

EXPORTADO POR: Samsung Electronics CO.,LTD.  
416, Mae tan-3dong, Yeongtong - gu,  
Suwon City, Gyeonggi-do Korea

## PRODUCT INFORMATION (Image Retention Free)

LCD Monitors and TVs may have image retention when switching from one image to another especially after displaying a stationary image for a long time. This guide is to demonstrate correct usage of LCD products in order to protect them from Image retention.

### • Warranty

Warranty does not cover any damage caused by image retention.  
Burn-in is not covered by the warranty.

### • What is Image retention ?

During normal operation of a LCD panel, pixel image retention doesn't occur. However, if the same image is displayed for a long time, a slight difference in electric charge accumulates between the two electrodes which encase the liquid crystal. This may cause the liquid crystal to build up in a certain areas of the display. Thus, the previous image is retained when switching to a new video image. All display products, including LCD, are subject to image retention. This is not a product defect.

Please follow the suggestions below to protect your LCD from image retention

### • Power Off, Screen Saver, or Power Save Mode

Ex)

- Turn the power off when using a stationary pattern.
  - Turn the power off for 4 hours after 20 hours in use
  - Turn the power off for 2 hours after 12 hours in use
- Use a Screen saver if possible
  - Screen saver in one color or a moving image is recommended.
- Set the Monitor to power off with the PC Display Properties Power Scheme.

### • Suggestions for specific applications

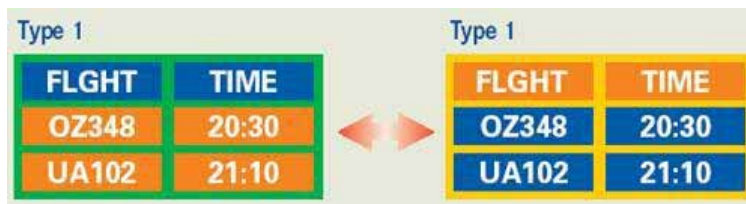
Ex) Airports, Transit Stations, Stock Markets, Banks, and Controlling Systems  
We recommend that you follow set up of your display system program as below:

### • Display Information together with Logo or Moving image cycle.

Ex) Cycle : Display Information for 1 hour followed by a  
Display Logo or moving image for 1 minute.

### • Change the Color Information periodically (Use 2 different colors).

Ex) Rotate the Color Information with 2 colors every 30 minutes.



Avoid using a combination of characters and background color with large difference in luminance.

Avoid using Grey colors, which can cause Image retention easily.

- Avoid: Colors with big difference in luminance (Black & White, Grey)

Ex)



- Recommended settings: Bright colors with little difference in luminance
  - Change the characters color and background color every 30 minutes

Ex)



- Every 30 minutes, change the characters with movement.

Ex)

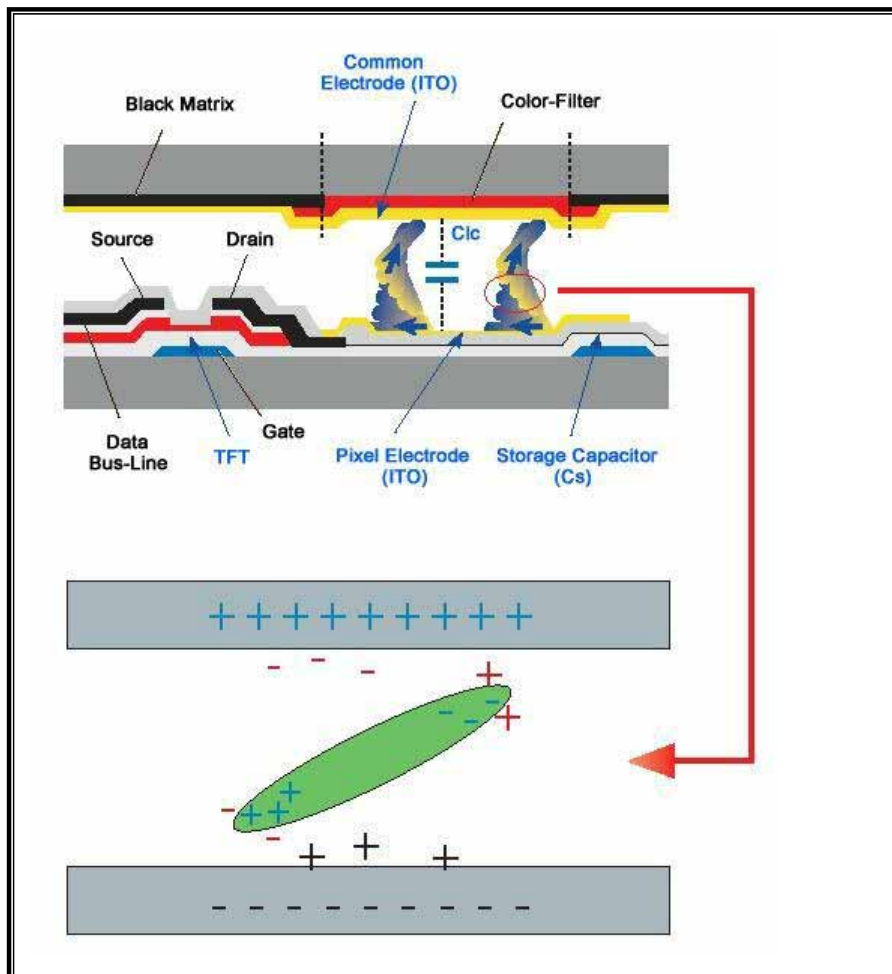


- The best way to protect your monitor from Image retention is to set your PC or System to operate a Screen Saver program when you are not using it.

Image retention may not occur when a LCD panel is operated under normal conditions.

Normal conditions are defined as continuously changing video patterns. When the LCD panel is operated for a long time with a fixed pattern (-over 12 hours-), there may be slight difference in voltage between electrodes that work the liquid crystal (LC) in a pixel. The voltage difference between electrodes increases with time, forcing the liquid crystal to lean. When this occurs, the previous image may be seen when the pattern is changed.

To prevent this, the accumulated voltage difference must be decreased.



- Our LCD Monitor satisfies ISO13406-2 Pixel fault Class II

## Correct Disposal of This Product (Waste Electrical & Electronic Equipment) - Europe only

---



**(Applicable in the European Union and other European countries with separate collection systems)**

This marking shown on the product or its literature, indicates that it should not be disposed with other household wastes at the end of its working life. To prevent possible harm to the environment or human health from uncontrolled waste disposal, please separate this from other types of wastes and recycle it responsibly to promote the sustainable reuse of material resources.

Household users should contact either the retailer where they purchased this product, or their local government office, for details of where and how they can take this item for environmentally safe recycling.

Business users should contact their supplier and check the terms and conditions of the purchase contract. This product should not be mixed with other commercial wastes for disposal.