



LCD MONITOR

quick start guide

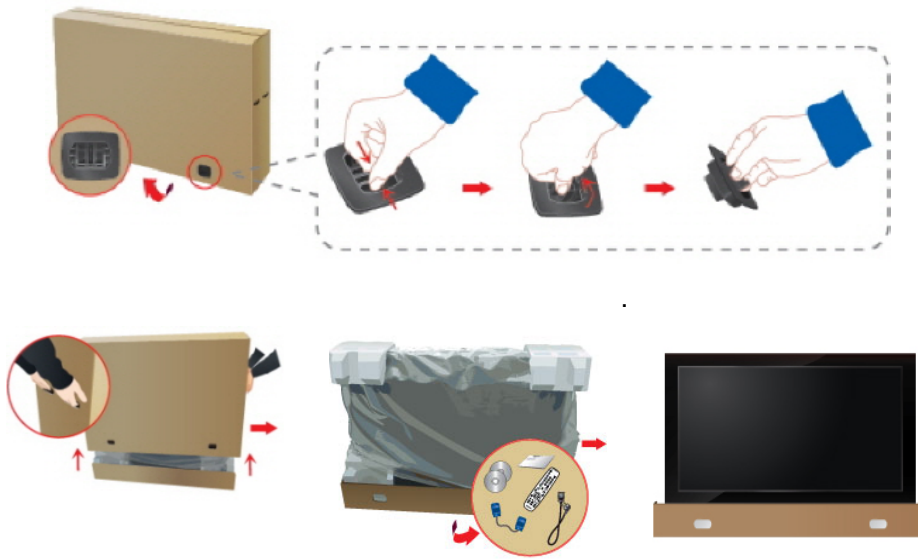
650MP, 650FP

제품 설명

제품 구성



구성품 확인



"

"

"

구성품



LCD Display



D-Sub



(BP59-00138A)



(AAA X 2)



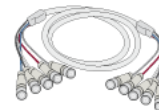
BNC-RCA



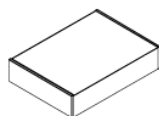
DVI



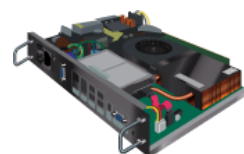
RGB -BNC



BNC-BNC



KIT

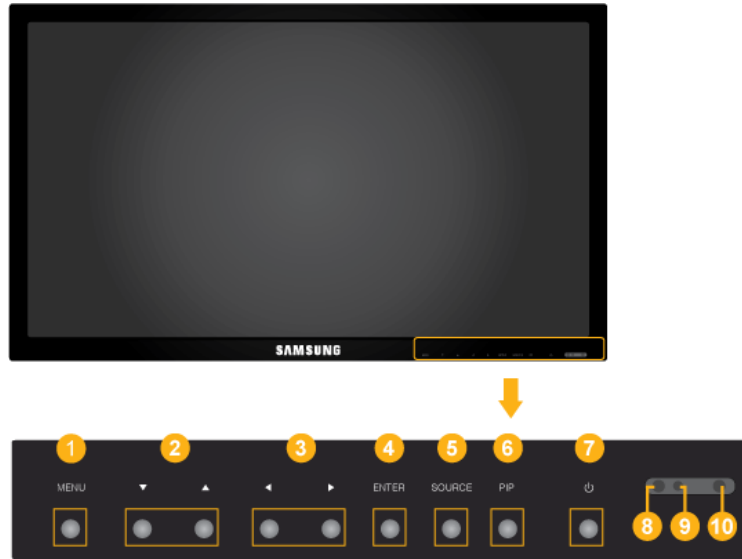




" "

각부의 명칭

앞면



1 MENU [MENU]

2

3 /

4 ENTER [ENTER]

5 SOURCE [SOURCE]

[PC] → [DVI] → [] → [] → [HDMI] → [MagicInfo]
→ [BNC]



" MagicInfo

" HDMI

6 PIP

" PC : DVI / / / HDMI

" BNC : DVI / / HDMI

" DVI / : PC / BNC

" : PC

" HDMI : PC / BNC

7 []

8 ()

가



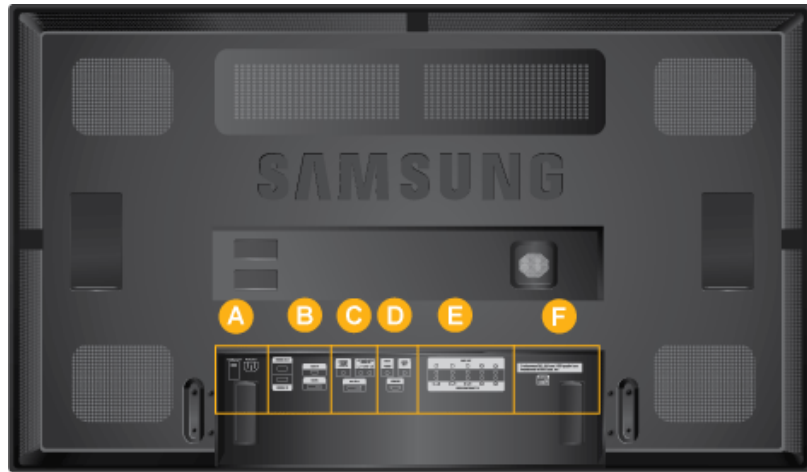
가

9

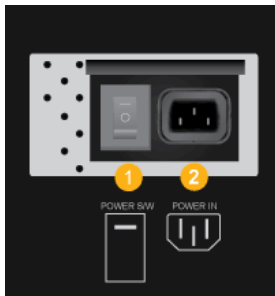


뒷면





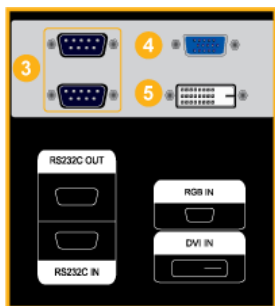
A



1 POWER S/W ON [I] / OFF [O]

2 POWER

B



3 RS232C OUT/IN (RS232C / MDC(Multiple Display Control) /)

4 RGB IN (PC)

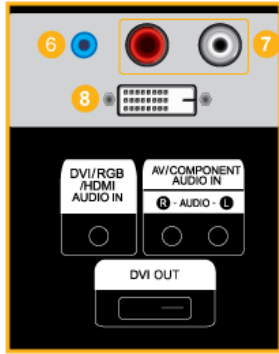
" D-SUB PC RGB [RGB]

" RGB-BNC PC BNC RGB

5 DVI IN (PC)

DVI [DVI IN] PC

C



6 DVI/RGB/HDMI AUDIO IN (PC/DVI/HDMI(PC) ())

7 AV/COMPONENT AUDIO IN [R- AUDIO- L]

[R-AUDIO-L]

8 DVI OUT

" DVI

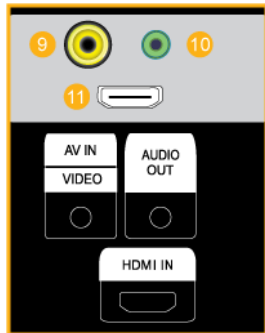
" DVI-HDMI [DVI OUT] [HDMI IN]

" DVI, HDMI, [DVI OUT] (DVI IN)



Full HD 6 , HD 10 가 . (.)

D



9 AV IN [VIDEO]

VIDEO [AV IN [VIDEO]]

10 AUDIO OUT

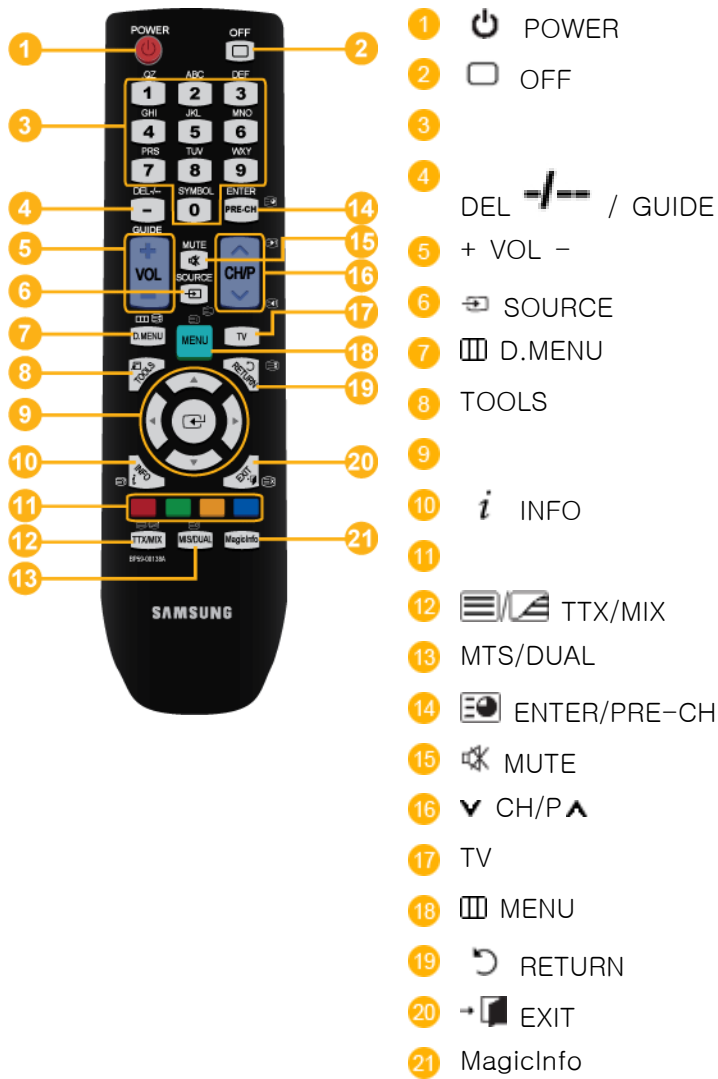
11 HDMI IN

HDMI HDMI HDMI IN

HDMI HDMI

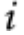
HDMI 1.0

E



- 1. POWER
- 2. Off
- 3.
- 4. DEL / GUIDE "- " DTV DTV MMS()
- 5. + VOL -
- 6. SOURCE TV/
- 7. D.MENU DTV
- 8. TOOLS
- 9.
- 10.
- 11.
- 12.
- 13.
- 14. ENTER/PRE-CH
- 15. MUTE
- 16. CH/P
- 17. TV
- 18. MENU
- 19. RETURN
- 20. EXIT
- 21. MagicInfo

9.

10.  INFO

가

11.

12.  TTX/MIX

TV

- Teletext



13. MTS/DUAL

MTS-

MTS (Multichannel Television Stereo)

		MTS/S_Mode
FM	Mono	Mono
	Stereo	Mono ↔ Stereo
	SAP	Mono ↔ SAP Mono

DUAL-

TV DUAL
STEREO/MONO, DUAL I / DUAL II, MONO/NICAM
MONO/NICAM STEREO



14.  ENTER/PRE-CH

15.  MUTE

가

(+)

가

16.  CH/P 

TV

17. TV

TV

18.  MENU

19.  RETURN

20. →  EXIT .

21.MagicInfo

MagicInfo 가 .

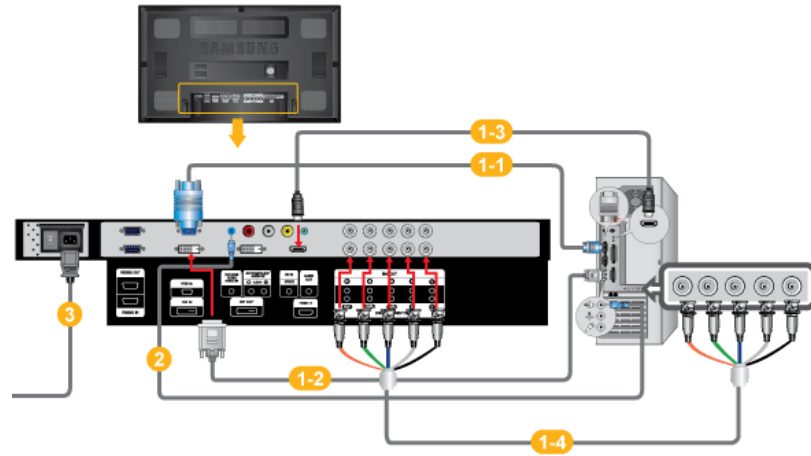


MagicInfo

.

제품 연결 및 사용

컴퓨터와 연결하기



1

가

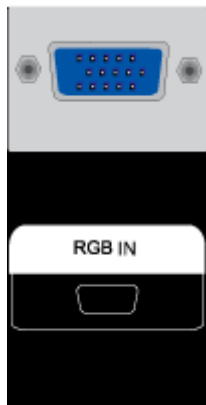
1-1

D-Sub()

" D-Sub

[RGB IN]

D-Sub



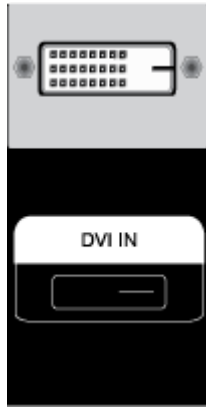
1-2

DVI()

" DVI

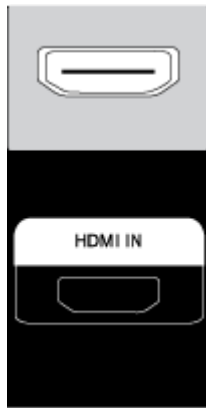
[DVI IN]

DVI



1-3

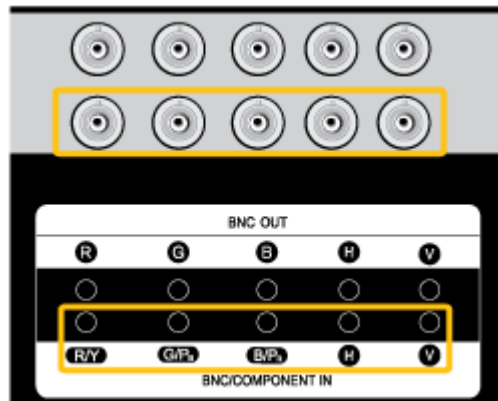
HDMI()
 " HDMI [HDMI IN] PC HDMI



HDMI PC HDMI PC DVI HDMI
 PC 가 , 2

1-4

BNC()
 " BNC-BNC LCD Display [BNC/COMPO-
 NENT IN] PC BNC



2

3

220V 110V



"

"

다른 장치와 연결하기



" DVD, VCR

AV

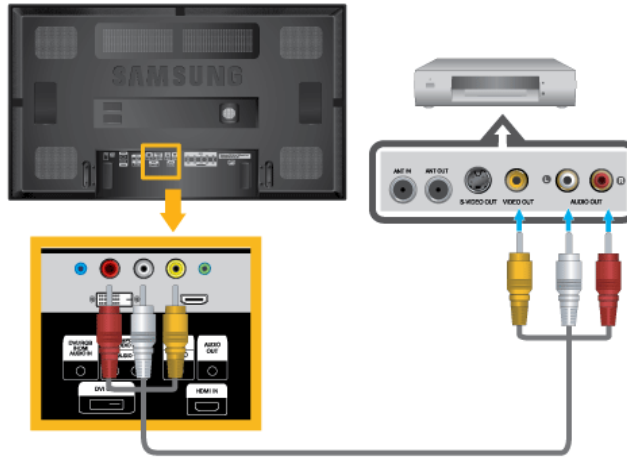
가

AV

가

"

AV 장치와 연결하기



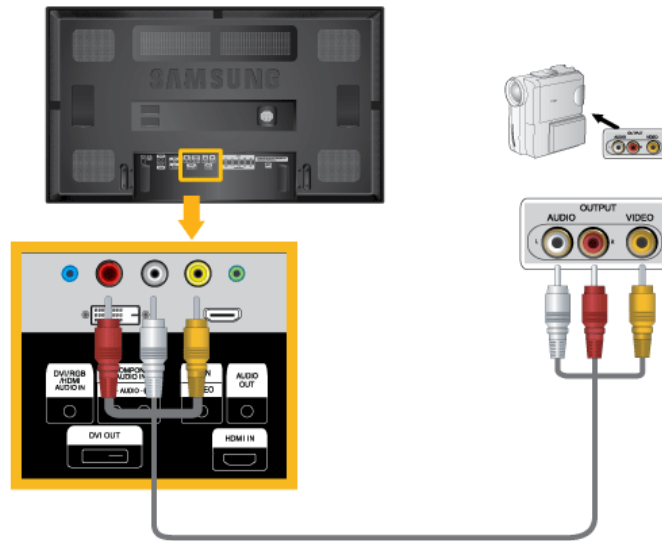
1. AUDIO IN[R-AUDIO-L]
[AV IN [VIDEO]]


[AV/COMPONENT

2. DVD, VCR DVD

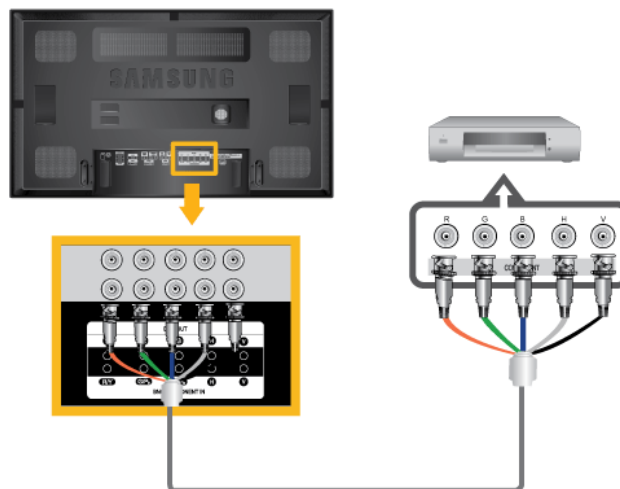
3. SOURCE

캠코더와 연결하기



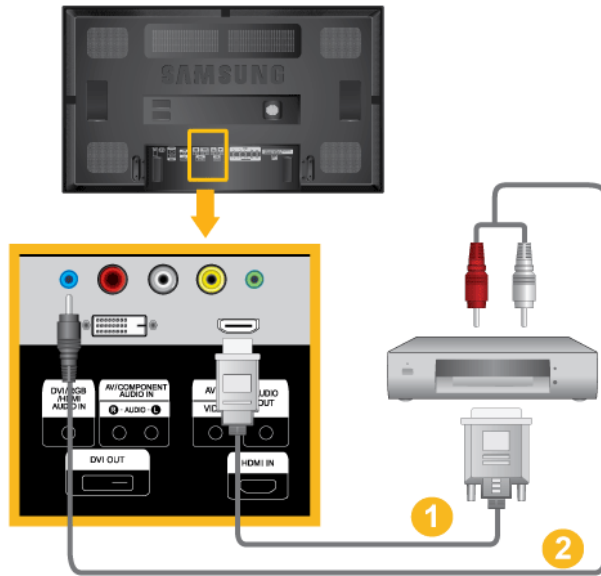
1. A/V [AV /COMPONENT AUDIO IN [R-AUDIO-L]]
 2. [AV IN [VIDEO]]
 3. SOURCE
 4. 
- 가 . (

BNC-BNC 케이블로 연결하기



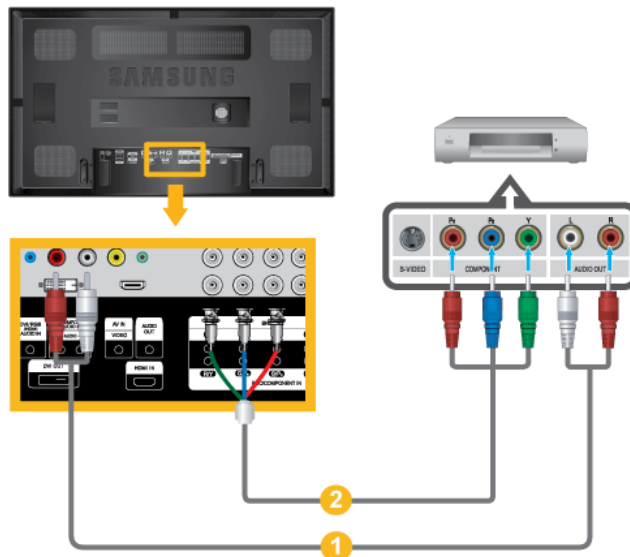
1. [BNC/COMPONENT IN [R/Y, G/P_B, B/P_R]] BNC
BNC-BNC

DVI - HDMI케이블로 연결



1. DVI - HDMI DVI [HDMI IN]
2. RCA -(PC)stereo [DVI / RGB / HDMI AUDIO IN]
3. SOURCE HDMI

DVD 플레이어와 연결하기

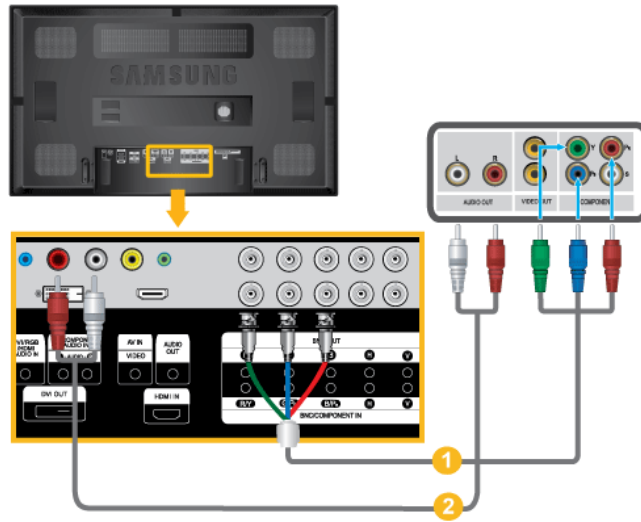


1. [AV/COMPONENT AUDIO IN [R-AUDIO-L]] DVD
2. [BNC/COMPONENT IN [R/Y, G/P_B, B/P_R]]



" 'SOURCE'
 " DVD
 " DVD

DTV 셋톱박스 연결하기

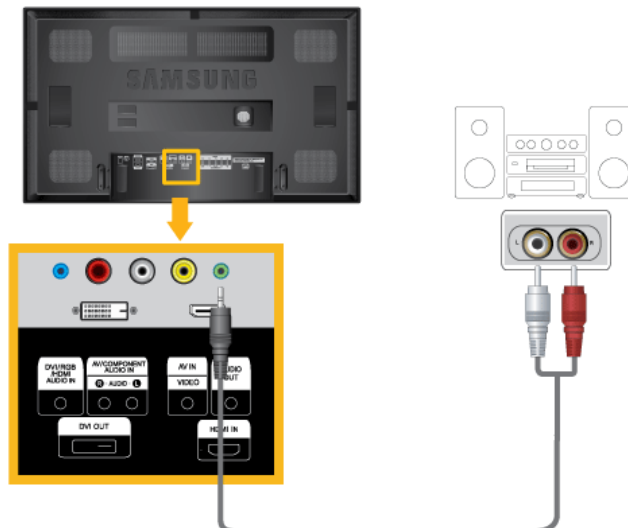


1. [BNC/COMPONENT IN [R/Y, G/P_B, B/P_R]] P_R, Y, P_B
2. [AV COMPONENT AUDIO IN [R-AUDIO-L]]



" 'SOURCE'
 "

오디오 시스템 연결하기



1.

AUX L, R

[AUDIO OUT]

문제 해결 방안

모니터 자체 진단



가 . 가

모니터 자체 진단

가

- 1.
- 2.
- 3.

가 ()

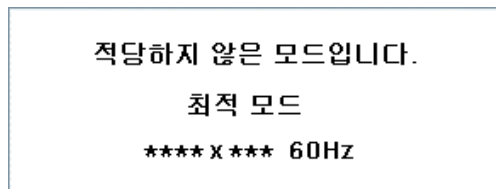
LED



- 4.

적당하지 않은 모드입니다

1920 x 1080
가 1 . 85Hz



가 >

손질 및 청소 방법

- 1)



2)

()



고장 발생시 확인/조치 사항



PC

PC

가

1

1.

2.

3

(" " 가 3

.)

3.

PC

4.

50Hz ~ 85Hz

(,

60Hz

.)

5.

" " " "

확인해 보세요



"

설치와 관련된 문제 (PC 모드)



Q:

A:

()

화면과 관련된 문제



Q:

A:

()

Q: " ." 가

A:

()

A:

Q: " ." 가

A: 가

A:

Q:

A:

()

Q:

A:

A: ()

A:

Q:

A: 가 가
가

Q: 가

A: 가 가
가

Q:

A:

(,)

Q:

A:

Q:

A:

Q:

A:

Q:

0.5 1

A: 가

A:

Q:

A: MENU

"TEST GOOD"

음향과 관련된 문제



Q: 가

A:

()

A:

Q: 가

A:

A: 가

Q: 가

A:

리모컨과 관련된 문제



Q:

A: + /- 가 ?

A: 가 ?

A: 가 ?

A: 가 ?

A: ?

궁금해요

Q: ?

A:  .

. (.)

Q: ?

A: Windows XP:

A: Windows ME/2000:

*

Q: ?

A: Windows XP:

BIOS SETUP . (Windows/

)

A: Windows ME/2000:

BIOS SETUP . (Windows/

)

Q: /LCD ?

A:

, LCD 가 ,
가 .

Q: ?

A: Movie WMV, MPEG1 가 .(WMV,
MPEG1) ,



, 가 . 가