

FOR PRODUCTION-INTENSIVE ENVIRONMENTS

MX-M850/MX-M950/MX-M1100

With exceptional usability, simplified workflow, comprehensive print management and support for variable data printing (VDP) offered as standard features, the Fiery System 8e embedded controller is a powerful solution for any printing task.

Optional applications like EFI Hot Folders and Virtual Printers take automated printing to the next level. Users can “Drag-and-Drop” files into hot folders that are preconfigured with job specific settings, or to virtual printers that appear as network printers. Other options include EFI Impose® Fiery Edition, which provides advanced booklet and imposition capabilities, adding flexibility and functionality for all productive office, Corporate Reprographics Departments (CRD) and print-for-pay environments.



WORKFLOW PRODUCTION

Produce Complex Documents More Quickly, Easily, and Efficiently!

With System 8e, the Fiery embedded controller is a robust utilization of Fiery smart RIP technology, productivity tools and logical workflows that drive increased performance for all users.

Controller Highlights:

- Powerful 2.8 GHz CPU with 256MB RAM standard (upgradable to 512MB)
- Latest Fiery System 8e architecture for greater productivity
- Workstation and Internet tools allow administrators to streamline workflow
- IT tools to facilitate seamless integration into almost any network infrastructure
- Compatible with the Sharp MX-M850, MX-M950 and MX-M1100

Seamless integration with your infrastructure

Designed to fit into networked business environments, the Fiery controller provides an intuitive and flexible platform to manage the entire document printing process—forming a single interface for productivity. Additionally, all standard network protocols are supported, simplifying installation and deployment. And with Fiery WebTools™, users can access remote management of their jobs and devices via an easy-to-use web interface.

Intuitive, easy-to-use desktop interface

The driver provides organized access to print functions and settings. Pop-up menu information provides convenient overview and sub-menu choices for each option, so navigation is simple.

Features like Drag-and-Drop Watermark, Job Monitor and Booklet Maker help you generate complex jobs without purchasing additional software, so you can perform sophisticated features quickly and easily.

EFI Impose Fiery Edition (optional)

The EFI Impose Fiery Edition option offers an Intuitive WYSIWIG imposition solution for large or complex documents that's easy-to-use and versatile. With EFI Impose Fiery Edition operators can view thumbnails and full-screen previews, edit non-native files, add or delete pages, and preflight to check for errors before RIPping.

FreeForm™ and Command WorkStation®

Get the sophistication of variable data printing in a flexible, scalable, and easy-to-use interface. As the industry's leading variable data printing solution, FreeForm enables you to tap into one-to-one marketing.

You can also centralize print management with the extensive Command WorkStation features. Monitor devices and jobs and add, delete or re-order jobs to optimize workflow in production-intensive environments.



MX-PEX3 FIERY CONTROLLER

SPECIFICATIONS FOR MX-PEX3 CONTROLLER

Compatibility	MX-M850, MX-M950 and MX-M1100
Controller	Intel® Celeron® 2.8GHz CPU, 256MB RAM (max 512MB), 80GB Hard disk drive, ECT Compression and Fiery SmartRIP®
OS	System 8e
Functions	Network print, network scan, document filing, Sharpdesk® and Facsimile with Fax options.
Interface	RJ-45 Ethernet -10/100BaseT, 1000BaseT (Fiery), USB 2.0 (USB media port)
Firmware	Update via USB and/or network
PDL	Adobe® PostScript® 3™, PCL®6/PCL5c
Resolution	1200 x 1200 dpi, 600 x 600 dpi PS, PCL6
Drivers	Windows® 2000, Windows XP 32-bit edition Vista 32/64-bit editions, Windows 2003 Server, Mac® OSX (including 10.5)
Utilities	Command WorkStation (Windows/Mac), EFI Driver, EFI Fiery WebTools, Fiery FreeForm, Job Monitor, and Printer Administration Utility™
OS Support	Windows 2000, Windows XP 32-bit edition Vista 32/64-bit editions, Windows 2003 Server, Mac 10.2.8 to 10.4
Protocols	TCP/IP for Windows (IPv4, IPv6) and Unix® environments IPX/SPX for Novell® and EtherTalk for Macintosh® environments
Networking	Auto Protocol switching, Auto Port switching, Pserver (8 connections), NDS, Netware 6™ compliance (IPP, NDPS gateway printing, point and print), Webjet Admin capable, IP Sec Support, SSL Support (IPP over SSL, LDAP over SSL), IPv6 support, SMB, AppleTalk, TCP/IP, Static IP, Auto IP (DHCP/BOOTP), Point and Print (Win 2000/2003/XP), Rendezvous/Bonjour support, SNMP (SNMP v3 Security, Common Printer MIB, SNMP Configurable Community Name, SNMP On/Off), Port 9100 (w/BiDi), IPP, E-mail client (Print via E-mail-PS/PDF), Network Time Protocol, EFI SDK v1.0, IP Filtering, Port Blocking (Filtering)
Security	Confidential Print, Secure Socket Layer, IP/MAC address filtering, protocol enable/disable, port management, user authentication and document administration.

NETWORK SCANNING OPERATIONS WHEN MX-PEX3 FIERY CONTROLLER IS INSTALLED¹

Scan Output	Resolution: 600, 400, 300, 200
Formats	Monochrome: TIFF, PDF Color: Encrypted PDF, TIFF, JPG, PDF ²
Compression	Mono: Uncompressed, G3(MH), G4(MR/MMR) Color/Grayscale: JPEG(high,middle,low) Internet Fax: MH/MMR (option)
Destinations	E-mail, Desktop, FTP, Folder (SMB), USB, Internet fax (option), Super G3 fax (option)
One-Touch	Up to 999 destinations (combined with scan destinations) and up to 500 Groups
Programs	48
Security	E-mail server user authentication and user account control, SSL
Configuration	Web-based management; user/administrator
Method	Level login security

MX-PEX3 FIERY CONTROLLER OPTIONS

EFI Hot Folders/Virtual Printers

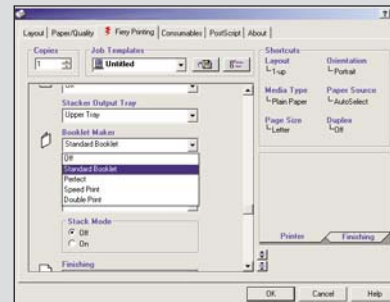
EFI Impose Fiery Edition

EFI Secure Erase

¹Requires optional network scanner expansion kit MX-NSX1.

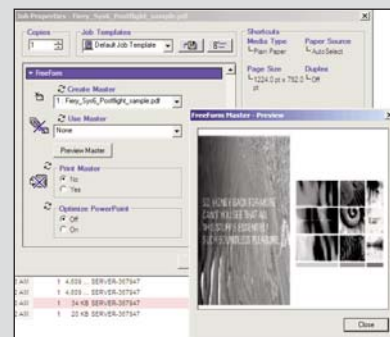
²Requires optional color expansion kit (for scanning) MX-EBX1.

STANDARD TOOLS



Booklet Maker

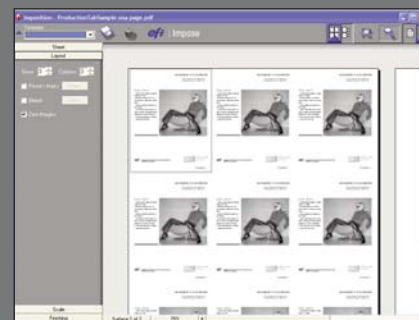
Print multiple pages in booklet style without requiring a more advanced imposition program. Windows and Macintosh Editions—available through EFI Driver, Hot Folders, and EFI Command WorkStation—support all file formats and applications, and offer the ability to add mixed media settings.



EFI's FreeForm Preview

Preview master in variable printing jobs to ensure correct data use. Bi-directional communication allows EFI driver to retrieve FreeForm master already resident on the Sharp Fiery Controller.

OPTIONAL TOOLS



EFI Impose Fiery Edition

Allows operators to edit and assemble entire documents before processing or RIPping the files. Quickly and easily view thumbnails and full-screen previews, edit without native files, add or delete pages, or preflight to check for errors before sending to print.



SHARP ELECTRONICS CORPORATION
Sharp Plaza, Mahwah, NJ 07495-1163
1-800-BE-SHARP • www.sharppusa.com

Design and specifications subject to change without notice. Sharp, Sharp OSA, Sharpdesk, My Sharp, and all related trademarks are trademarks or registered trademarks of Sharp Corporation and/or its affiliated companies. Windows, Windows NT, Windows Server and Windows Vista are registered trademarks of Microsoft Corporation in the United States and other countries. MAC OS is a registered trademark of Apple Inc.. All other trademarks are the property of their respective owners.