

FEATURED MODEL

157-106-CR BLANCOTERRA™ Single Lever Bar Faucet
in Polished Chrome

ADDITIONAL MODELS

157-106-ST Stainless (Satin Nickel)

157-106-ORB Oil Rubbed Bronze

FEATURES

- Solid brass body
- Ceramic disc cartridge
- Color coded hot & cold supply lines
- Reversible mounting hardware adapts to thick or thin mounting surfaces
- 2.2 G.P.M. flow rate
- Installation in a 1-3/8" hole

CODE/STANDARDS COMPLIANCE

ASME A112.18.1-2005

IAPMO Listed

WARRANTY

Blanco America's Kitchen faucets in Chrome and Satin Nickel feature a LIMITED LIFETIME WARRANTY to be free of all manufacturing defects under normal use. 5-YEAR LIMITED LIFETIME WARRANTY on Oil Rubbed Bronze. See our complete warranty for details.

While Blanco America endeavors to provide accurate information, all dimensions are nominal, cannot be guaranteed, and are subject to change or cancellation. Blanco America assumes no responsibility for use of superseded or voided specifications.

PRODUCT SPECIFICATION

Bar faucet to include lever handle with solid brass body and ceramic disc cartridge. Faucet dimensions to be as follows: Reach: 7"; Spout Height: 7-7/8". Hot and cold supply lines to be color coded. Reversible mounting hardware to adapt to thick or thin mounting surfaces. Bar faucet to be BLANCOTERRA™ Single Lever, Model 157-106-_____ in _____ finish.

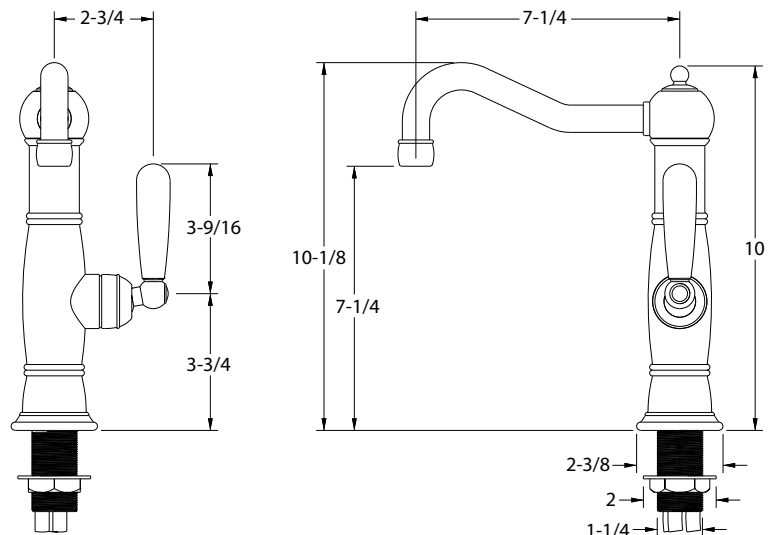
- ☐ Polished Chrome 157-106-CR
- ☐ Stainless (Satin Nickel) 157-106-ST
- ☐ Oil Rubbed Bronze 157-106-ORB



MODEL 157-106

NOMINAL DIMENSIONS

MODEL	REACH	SPOUT HEIGHT	FAUCET HEIGHT
157-106	7	7-7/8	10-15/16



JOB INFORMATION

Job Name: _____

Contact: _____

Date Specified: _____

Specifier: _____

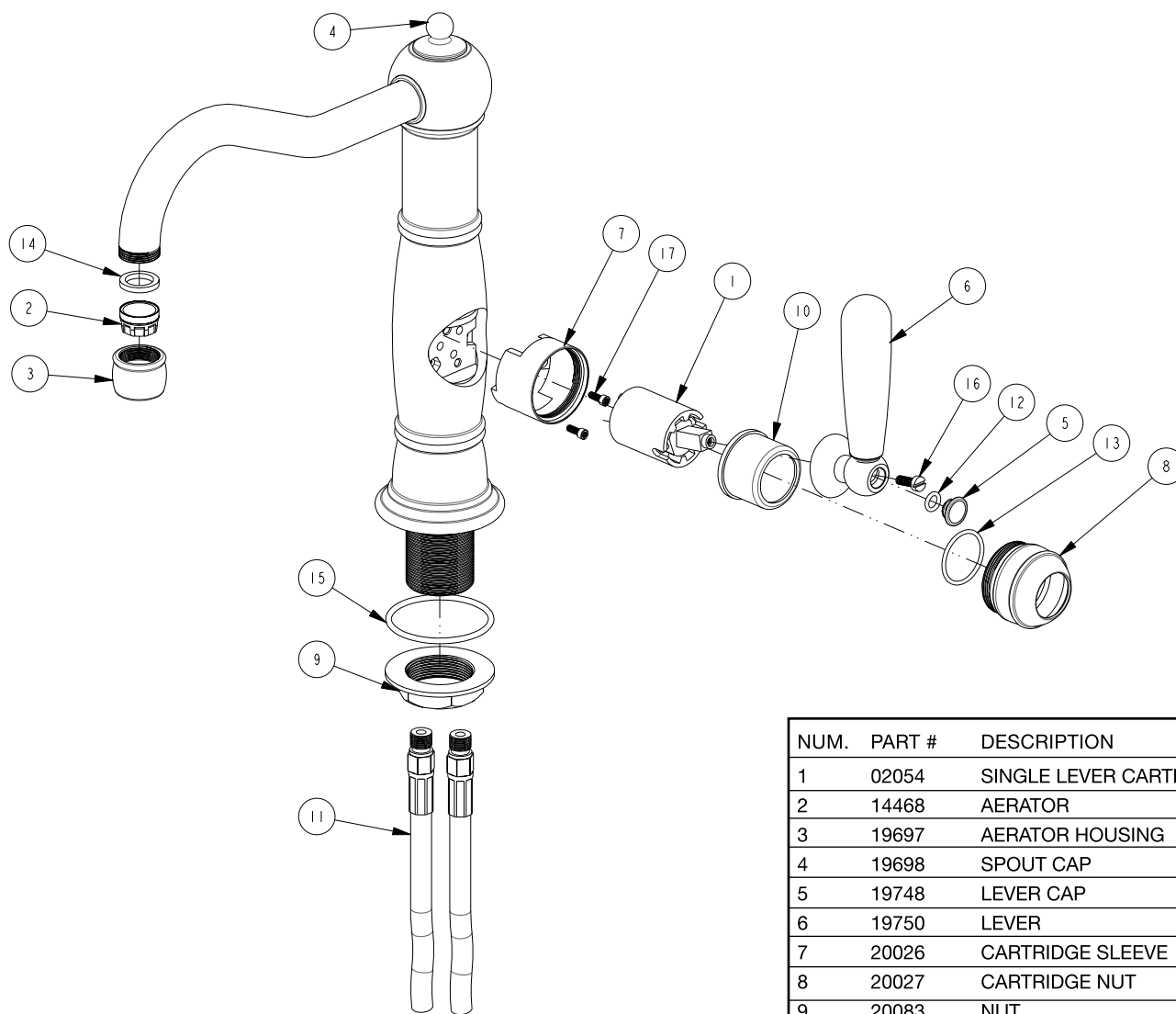
Contractor: _____

See next page for exploded parts drawing and parts list.

BLANCO AMERICA
800.451.5782
www.blancoamerica.com

BLANCOTERRA™ SINGLE LEVER

MODEL 157-106



NUM.	PART #	DESCRIPTION
1	02054	SINGLE LEVER CARTRIDGE
2	14468	AERATOR
3	19697	AERATOR HOUSING
4	19698	SPOUT CAP
5	19748	LEVER CAP
6	19750	LEVER
7	20026	CARTRIDGE SLEEVE
8	20027	CARTRIDGE NUT
9	20083	NUT
10	20183	CARTRIDGE RETAINER
11	20190	FLEX HOSE
12	91337	O-RING
13	91352	O-RING
14	91390	RUBBER WASHER
15	91794	O-RING
16	92142	CHEESE HD SCREW
17	92575	SOCKET CAP SCREW