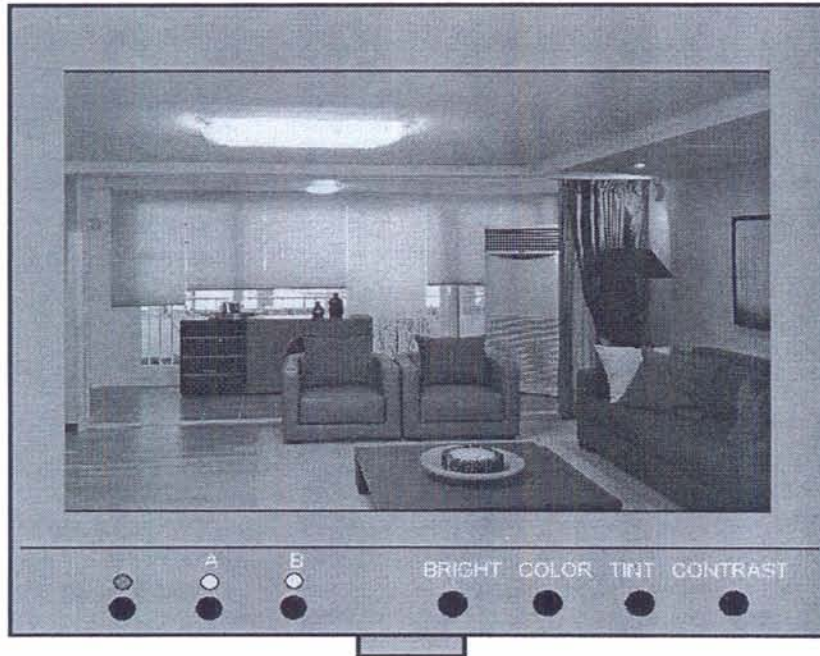




**LCD-560 Series**  
High Resolution  
5.6" TFT LCD Monitor



Model : LCD-560 (Stand Alone)

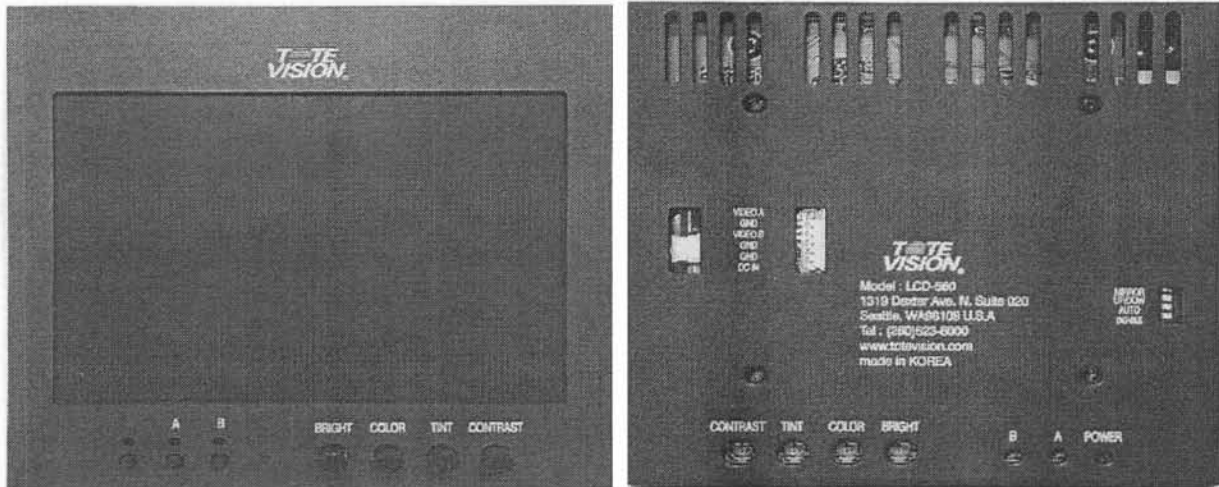


Model: LCD-560x3 (19" Rack Mount unit)

[www.totevision.com](http://www.totevision.com)

The LCD-560 Series is using high performance TFT LCD with excellent color reproduction.

Video is scaled to fit on screen in the highest resolution using a state of the art LED back light LCD panel that incorporates with precision Gamma correction to produce the best images available.



- High Resolution 5.6 inch 4:3 screen 320xRGBx234 Dots.
- Low power consumption using 21 long life LED back light
- Runs 6 hours on optional 2600 MAh rechargeable battery(model: BP-563)
- Durable metal enclosure with VESA and 1/4-20 Mount holes
- Wide viewing angle - 130° horizontal and 110° vertical provides superior visibility
- 350 candelas per square meter (cd/m<sup>2</sup>) luminance produces enhanced image quality
- 300:1 ratio of contrast between black and white luminance values with response rates less than 22 ms results in excellent quality for motion images
- Automatic NTSC/PAL format detection
- Inputs:
  - 2 BNC Composite Video PAL/NTSC
  - 2.1mm center pin D.C. power jack (open wire for LCD-560R)
- Manual Adjustment Settings
- Includes ¼-20 mounting pad for LCD-560

## Mechanical Specification

	LCD-560	LCD-560L/LX	LCD-560R
Dimensions (mm)	134x134x21	174x175x22	170x142x22
Cut out space(mm)		140x136	140x136
Mounting Hole(HxV;mm)		154x155	158x130
Approx. Weight(gm)	400	700	700
Power Consumption	10-15 VDC Approx. 5 Watts		
Operating Temperature	-20° C to 60° C Ambient		
Storage Temperature	-30° C to 80° C		

## Overview

The **LCD-560 Series** represents a state of art LCD display for broadcast and professional video applications. This is a low cost stand alone monitor and is constructed with 75mm VESA holes, ¼-20 mounting pad or flush mount for various applications.

This unit consumes low power and the monitor can be powered for over 6 hours with a 2600 MAh battery.

The TFT screen has 130 degrees viewing angle and provides excellent image reproduction.

## LCD Panel Cleaning

When cleaning the LCD Panel it is very important to use non-abrasive and ammonia free cleaning agents and a clean micro fiber cloth, or cheese cloth. Do **not** use paper towels. Paper towel fibers are coarse and may scratch the surface of the LCD screen. Paper towels may also leave streaks on the surface. Antistatic and fingerprint resistant cleaning agents are recommended.

## Operational Setup

1. Unpack the LCD-560.

Physically inspect for any damage that may have occurred during shipping. Should there be any damage, immediately contact ToteVision at 206-623-6000.

2. Connect required cables for video signal. (INPUT A only for LCD-560LX)

3. Plug the power supply into the A.C. source.

Please note that power can be supplied from a variety of DC sources, such as batteries or Vehicle power. Input power range should be 10 to 15 Volt D.C. In operation, the LCD-560 will draw approx. 0.4 amp. @ 12VDC.

4. Turn on the unit by pressing the power switch located on the front of the unit.

5. DIP Switch setting (LCD-560 L and LX version)

Mirror image and UP/Down switches affect both "A" and "B" inputs.

Mode 0 -> AUTO ON with power, Disable front power key ON

Mode 2 -> AUTO OFF, Disable power key ON

1) disable front power key    2) auto ON with power

MODE 1 -> AUTO ON, Disable OFF

MODE 3 -> AUTO OFF, Disable OFF

1) enable front power key    2) display A when power applied

6. Control wire for LCD-560R

**When Reverse/Select is a TTL low voltage, a left-to-right mirror image of the B input is displayed.**

**When Reverse/Select is a TTL high voltage, the A input is displayed.**

## Standard Accessories

- AC Adaptor for model LCD-560,L & LX
- User manual

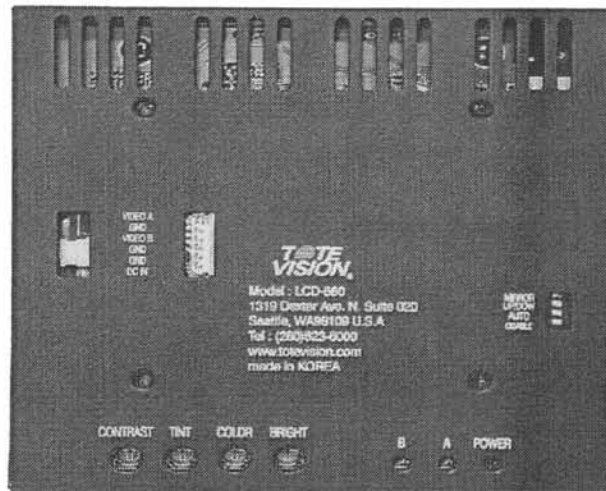
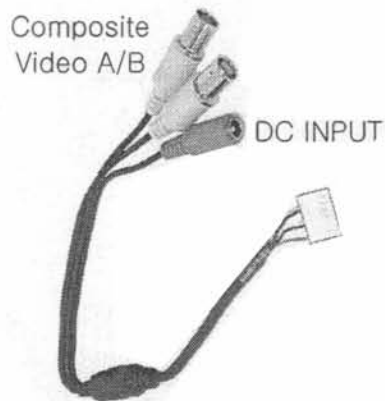
## Optional Accessories

- Custom tote bag, model TB-560

## Electrical Specifications

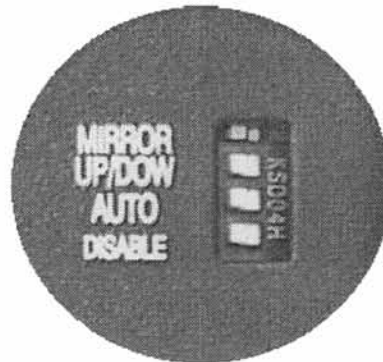
Display (Viewing Area)	5.6" (4.5"H x 3.4"V) (113.4mm x 84.7mm)
Viewing Angles	130°H x 110°V
Resolution (RGB Dots)	320H x RGB x 234V
Contrast Ratio	300:1
Gamma	2.2
Luma Linearity	Typical +/- 3% with 5 ire increments (0 to 10 ire)
Dot Pitch	0.118(H) x 0.362(V) mm
Pixel Response	22ms average
Screen Refresh Rate	50/60 frames per second
Backlight Type / Life	LED / Min. 20,000 (typical 30,000) Hours
Brightness	350 cd/m <sup>2</sup>
System	NTSC/PAL auto recognition
Inputs	2 Composite (female BNC)(75 Ohm terminated) DC12V Power IN
Controls	(front) Power, select A/B, Brightness, Color, Tint, Contrast (Back) Mirror, Up/Down, Auto power, Disable power key

## Input Connectors(BACK)

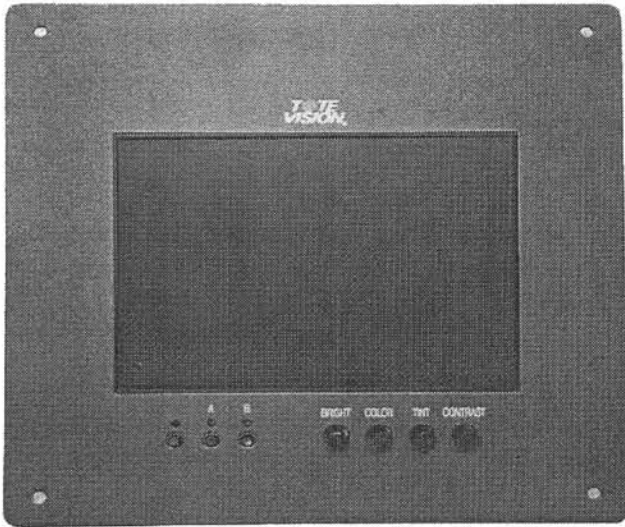


## DIP Switch Settings

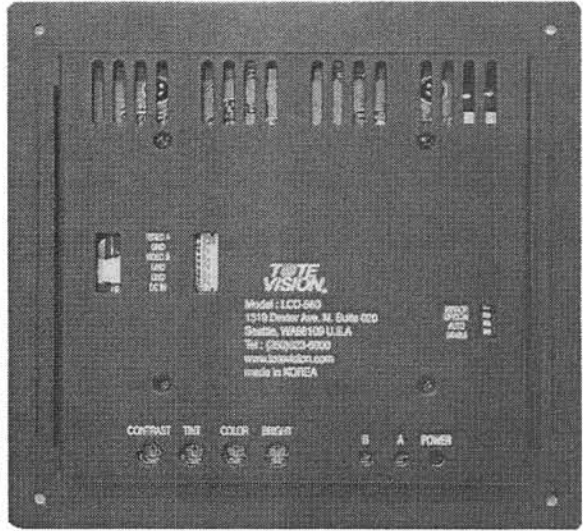
	Left	Right
Mirror image	Off	ON
UP/Down	Off	ON
AUTO ON with power	Off	ON
Disable power key	off	ON



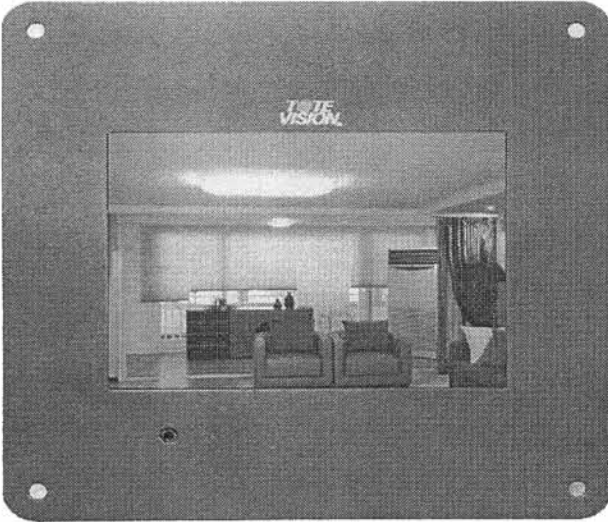
Flush Mount of LCD-560 Series



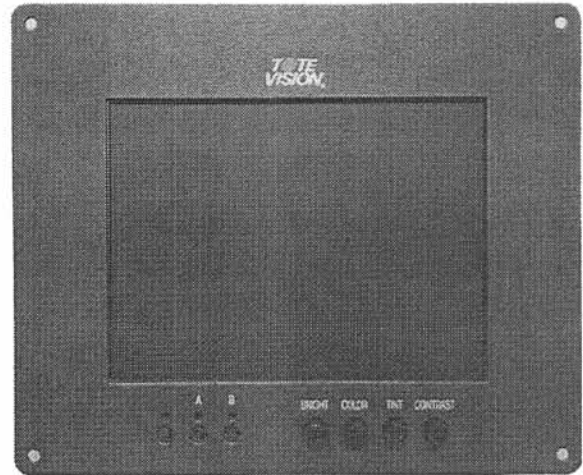
LCD-560L



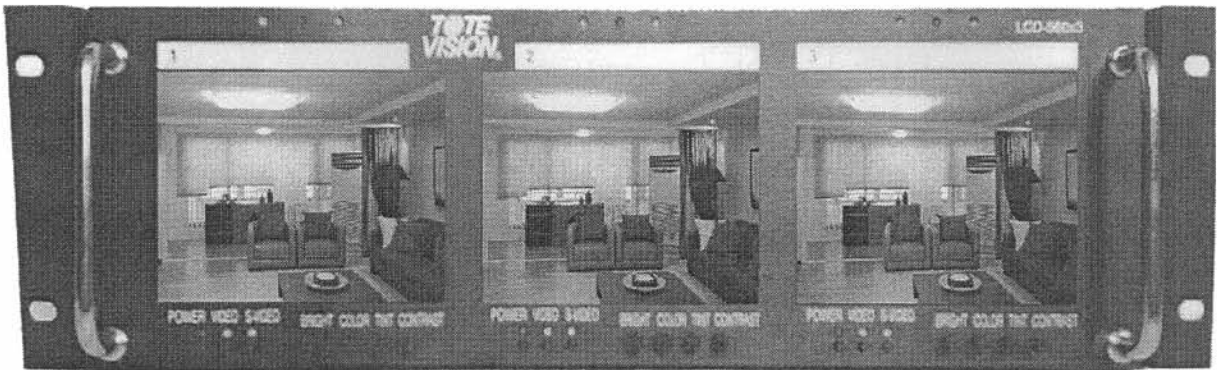
LCD-560L Back



LCD-560LX



LCD-560R



LCD-560x3(Rack mount unit)

### ONE YEAR LIMITED WARRANTY

**ToteVision** warrants to the original purchaser that this product is free from defects in workmanship and material under normal use and conditions for a period of 1 year from the date of original purchase, subject to the limitations below. Should service be required by reason of any defect or malfunction during the warranty period, **ToteVision** will repair or at its discretion replace this product, without charge (subject to verification of the defect or malfunction), upon delivery of this product to the Factory Service Center listed below with proof of date of purchase. During the warranty period **ToteVision** will repair or replace, free of charge, defective units **WHICH ARE NOT DEFECTIVE DUE TO ORDINARY WEAR AND TEAR, USER ABUSE, OR OTHER CAUSES NOT ARISING OUT OF MANUFACTURER'S DEFECTS IN MATERIALS OR WORKMANSHIP.**

Before returning this product for service:

1. If it is necessary to pack the unit in other than original carton and protectors, please insure proper packaging for good protection.
2. Enclose a photocopy of your dated sales receipt, credit card statement, or other proof of the date of purchase, a description of your complaint, your name, address and daytime telephone number. Do not use P.O. Box numbers since UPS cannot deliver to P.O. Boxes. Your warranty registration information must be on file in our office as a method of identification. If proof of original ownership is not in our records, the repair will be treated as "out-of-warranty" and your unit will be returned to you C.O.D. for repair and handling charges.
3. Ship the unit prepaid to the **ToteVision** Service Center listed below.
4. If your unit needs service after the warranty period has expired, ship it prepaid and insured to the **ToteVision** Service Center below. Enclose a description of your complaint, your name, company name, address, and daytime telephone number. You will be advised of estimated repair charges.

NOTE: This warranty is valid only if the product is used for the purpose for which it was designed. It does not cover:

- (i) products which have been damaged by negligence, misuse, accidents, abuse, acts of God, or units which have been modified or repaired by unauthorized persons,
- (ii) cracked or broken units or units damaged by excessive heat or cold, or units exposed to excessive UV light.
- (iii) products which have their serial numbers removed, altered or rendered illegible,
- (iv) the cost of shipping this product to the Factory Service Center.

No warranty, expressed or implied, as to merchantability or fitness for a particular use is made beyond this Limited Warranty. **ToteVision** will not be liable for incidental or consequential damages or lost profits arising from product defects or malfunctions. This warranty is valid only in the United States of America and does not extend to owners of the product subsequent to the original purchaser. Any applicable implied warranties are also limited to 1 year and **ToteVision** will not be liable for consequential damages. (Some states do not allow limitations on implied warranties or exclusions of consequential damages, so that these restrictions may not apply to you.) This warranty gives you specific legal rights, and you may also have other rights, which vary from state to state.

As a precondition to receiving any of the benefits of this limited warranty, your completed warranty registration information must be on file in our office. **IF YOUR INFORMATION IS NOT ON FILE WITH US, ALL WARRANTY CLAIMS WILL BE DENIED. TO PROTECT YOUR WARRANTY, MAIL YOUR REGISTRATION INFORMATION TODAY!** Submission of a unit determined not defective will result in a charge to you for testing and handling the unit. Thoroughly test your unit before submitting it for warranty claim repair.

Send unit to: **TOTEVISION SERVICE CENTER 1319 Dexter Avenue N. # 020, Seattle, WA 98109**

For further information: **call (206) 623-6000** or fax (206) 623-6609

---

#### WARRANTY REGISTRATION

**Protect your Warranty by completing and mailing this form to:**

**ToteVision, 1319 Dexter Avenue N. # 020, Seattle, WA 98109**

Model Number: \_\_\_\_\_ Serial Number: \_\_\_\_\_

Name: \_\_\_\_\_

Address: \_\_\_\_\_

City: \_\_\_\_\_ State: \_\_\_\_\_ Zip: \_\_\_\_\_

Telephone number: (\_\_\_\_\_) \_\_\_\_\_

Dealer: \_\_\_\_\_ Dealer City: \_\_\_\_\_ State: \_\_\_\_\_