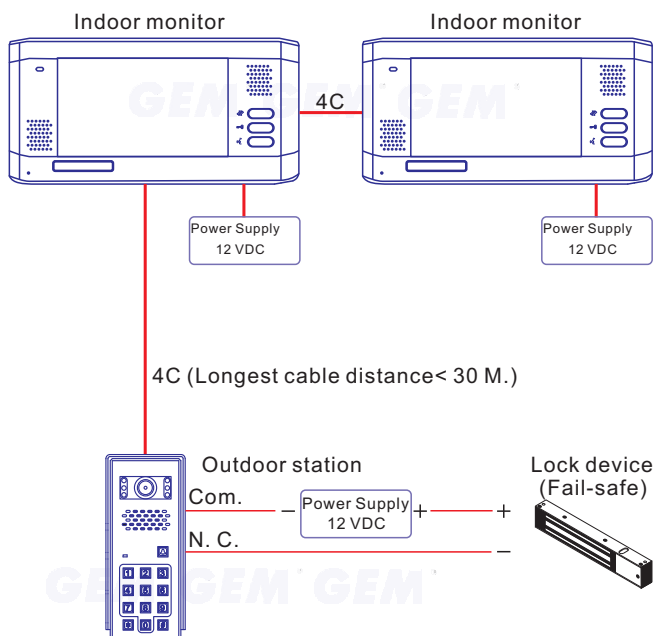


6" LCD full color screen  
2-way communication  
Crystal clear speaker system  
Clear and bright pictures  
Quick and easy connection



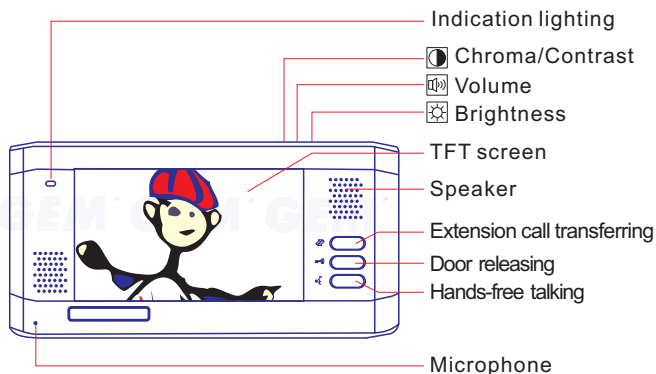
Metal external housing  
Auto keypad illumination in darkness  
40 user PIN  
Programmable lock timer(01~99s)  
Latching relay facility  
Narrow style

### ● Maximal component: 2 color video monitors + one outdoor station

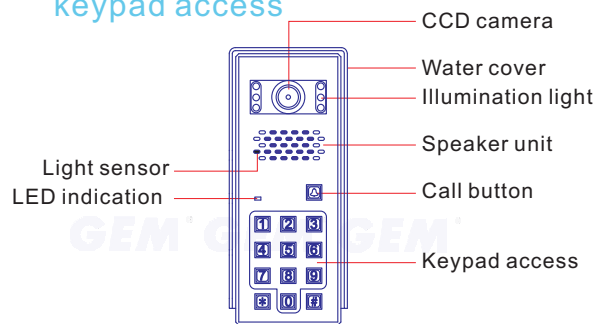


Every unit need a power supply except outdoor station.

### ● Four wires villa system indoor monitor



### ● Four wires video system with integral keypad access



### ● Specifications

- Power input : 12~18 VDC
- Stand by : 12 mA
- Camera : 1/3 CCD lens
- Mode : Dual transmission
- Temperature : -20~+55°C
- Working current : 600 mA
- Illumination : 0.05 LUX
- Talking time : 2 minutes

### ● System connection

- Normal 4C cable , cable dia. > 0.5 mm, longest cable distance < 30 M.
- Input power: 12 VDC, 800mA
- 4C wires must be connected as below:

Example: GND(black) — Audio(white)  
Video(purple) — Power+(red)

Use the normal cable:

Do not use the STP cable:



GIANNI INDUSTRIES, INC.

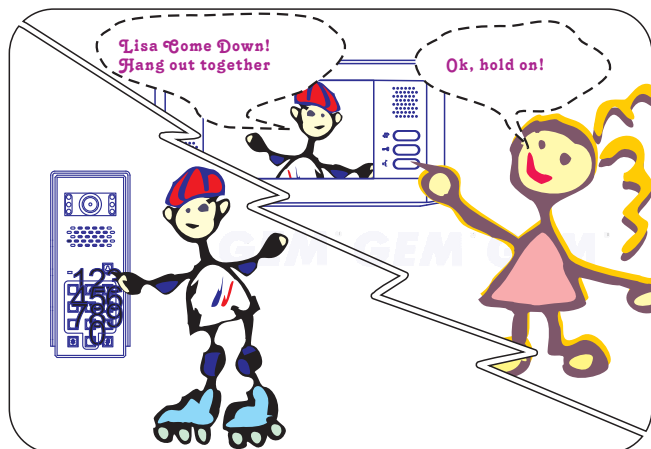
No. 13, Zhong Sing Road, Tu-Cheng Industrial Zone,  
Tu-Cheng City, Taipei, Taiwan 23678  
Tel: 886-2 2267 7986 / Fax: 886-2 2267 9876  
E-Mail: info@gianni.com.tw  
Website: gianni.tw  
Copyright 2008 Gianni industries, inc. All rights reserved.  
DM-CA-VDH-100 Ver. A Published on 2008.09.03



The products are manufactured under an ISO 9001 & QC 080000 Certified Quality Management Program environment back its product quality, performance and commitment to customer satisfaction.

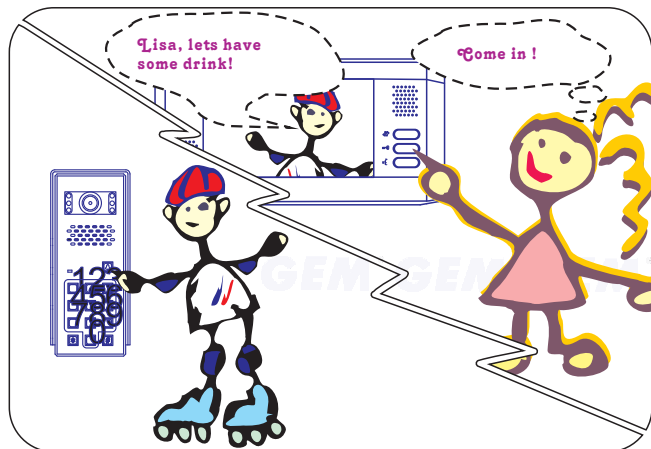
### ● Operation instruction

#### ■ Conversation



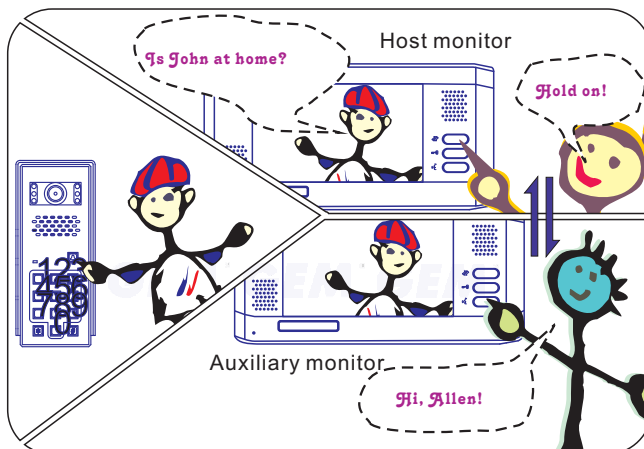
1. Visitor presses the call button.
  2. Press button to reply. (Hands-free talking)
- Other monitors should be cut off at the same time.

#### ■ Door release



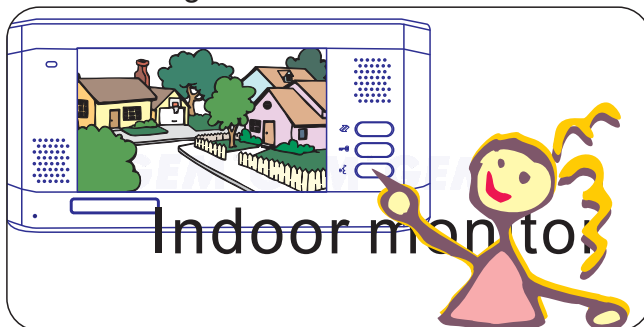
1. Visitor presses the call button.
2. Press button to reply. (Hands-free talking)
3. Press button to release the lock.

#### ■ Extension call transferring



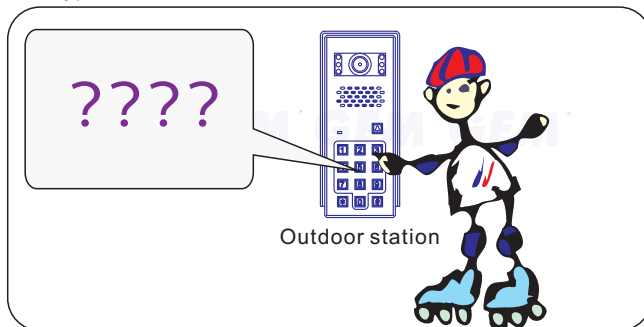
1. Visitor presses the call button.
2. Press button to reply. (Hands-free talking)
3. Press the button to transfer the auxiliary monitor.
4. Auxiliary monitor press to reply.

#### ■ Monitoring



When the system is standby, press the button to monitoring outside, other indoor monitors show system is busy. Press button again to stop monitoring.

#### ■ Keypad access control



Enter the PIN code to release the door lock.

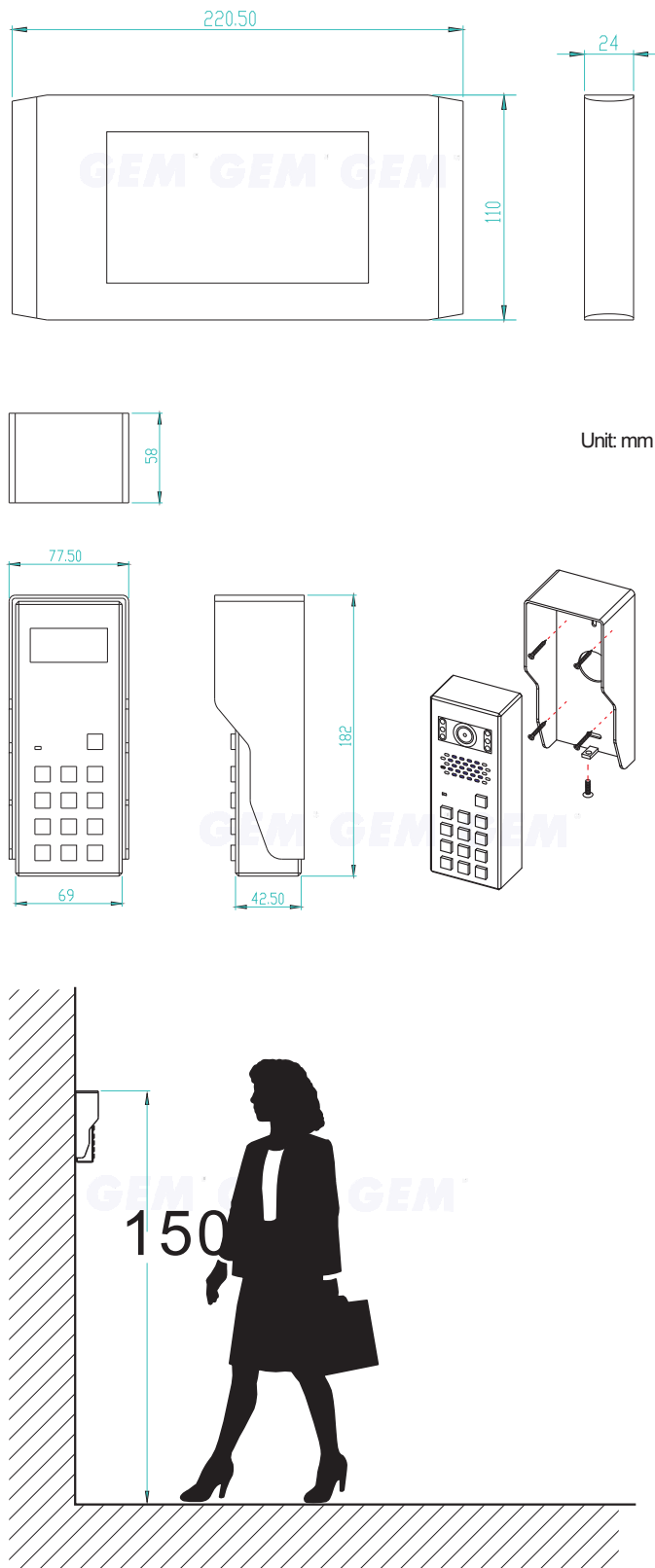
### GIANNI INDUSTRIES, INC.

No. 13, Zhong Sing Road, Tu-Cheng Industrial Zone,  
Tu-Cheng City, Taipei, Taiwan 23678  
Tel: 886-2 2267 7986 / Fax: 886-2 2267 9876  
E-Mail: info@gianni.com.tw  
Website: gianni.tw  
Copyright 2008 Gianni industries, inc. All rights reserved.  
DM-CA-VDH-100 Ver. A Published on 2008.09.03

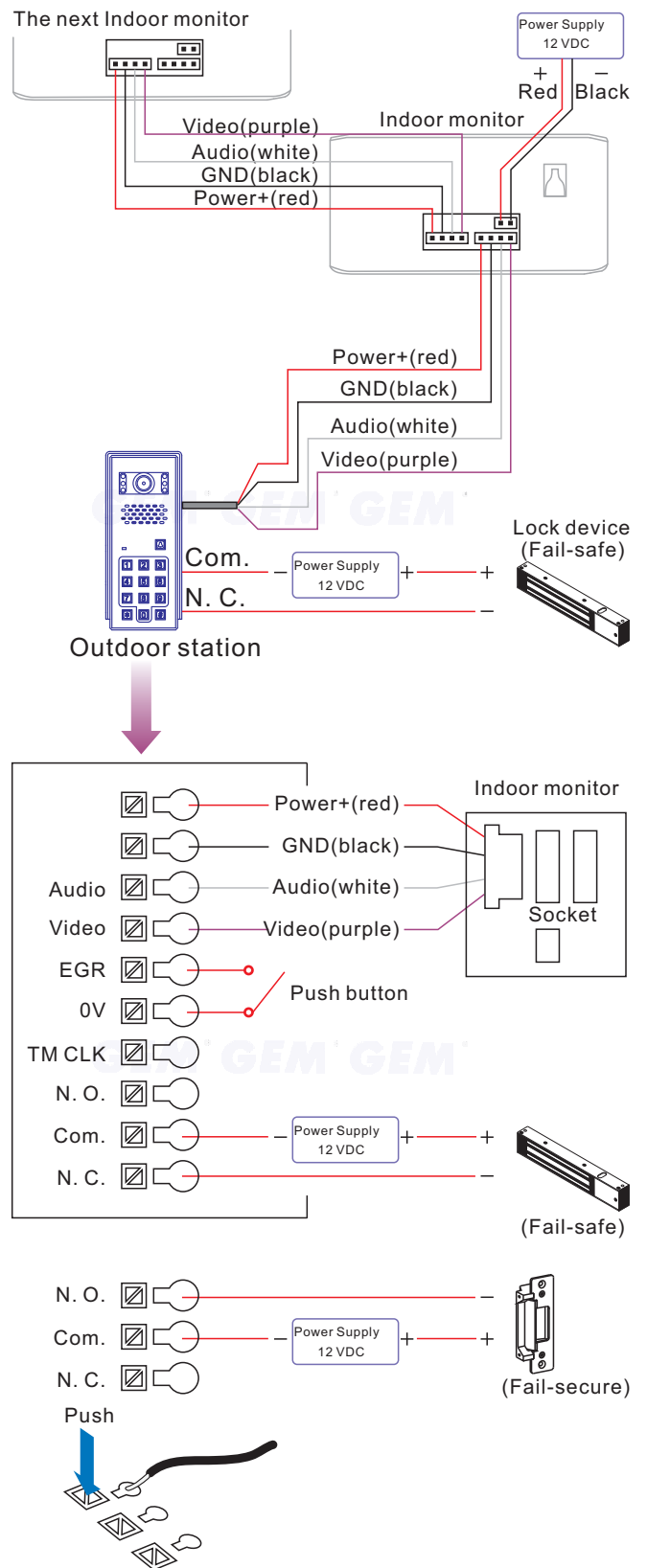


The products are manufactured under an ISO 9001 & QC 080000 Certified Quality Management Program environment back its product quality, performance and commitment to customer satisfaction.

### ● Dimension



### ● System wire diagram



GIANNI INDUSTRIES, INC.

No. 13, Zhong Sing Road, Tu-Cheng Industrial Zone,  
Tu-Cheng City, Taipei, Taiwan 23678  
Tel: 886-2 2267 7986 / Fax: 886-2 2267 9876  
E-Mail: info@gianni.com.tw  
Website: gianni.tw  
Copyright 2008 Gianni industries, inc. All rights reserved.  
DM-CA-VDH-100 Ver. A Published on 2008.09.03



The products are manufactured under an ISO 9001 & QC 080000 Certified Quality Management Program environment back its product quality, performance and commitment to customer satisfaction.

## ● Operation Instruction

The Master Code is set to 1234 as factory default.

### ■ Enter Programming Mode

Compose twice the master code (Factory master is 「1234」)

→ an audible and the LED will flash red → you are now in the "programming mode".

### ■ Exiting from the program mode

Press 「#」 to exit from the programming mode.

The system will out of the programming

### ■ Change the Master code

Enter the Programming mode, Enter the slot position code 「\*00」 → Enter the new master code 「????」 the long beep sound heard → The new Master code is set.

### ■ Add PIN codes

Enter the Programming mode, Enter the slot position code 「\*01~40」 →???? Input 4 digit PIN codes→ (beep) enrolled. Press 「#」 to exit from the programming mode, or program other operating.

Note : The codes 「0000」, 「1234」 or master code are not be used for PIN code.

### ■ Delete a PIN Code

Enter the Programming mode→ Press the slot position code of your choice to delete (example "06") → Press 「\*06」 → 「0000」 (beep)→ delete→ Press 「#」 to exit from the programming mode, or programming other operating.

### ■ Delete all PIN Codes

Enter the Programming mode→ Press 「\*88」 (The red LED will remain on.) → Press 「0000」 (The red LED turn off, beep)→Indicate that the delete all PIN codes.

### ■ Setting the relocking timer

Factory default set is 0.5 second.

Enter the Programming mode → Enter 「\*99」 → Enter the desired lock / relay operation time in a two digit format (01~99 seconds) → Press 「#」 to exit from the programming mode, or programming other operating. The lockout facility will operate.

### ■ Master Code reset to Factory 「1234」

Remove power from the unit and hold down the 「\*」 key. → Apply power whilst holding button down, the unit will then give long continuous tone. When the tone has stopped, → Press 「\*00#」 → The Master code reset to Factory 「1234」.

## ● Care and maintenance

1. Do not put the outdoor station near the magnetic area such as television, video recorder etc.
2. Do not drop, knock or shake the unit.
3. Do not put the outdoor station in hot areas, high temperatures can shorten the life of electronic device.
4. Do not attempt to open the unit, non expert handling may damage the unit.
5. Keep the indoor monitor dry, humidity and all types of liquids or moisture contains mineral that will corrode electronic circuits.
6. Do not use the wet dishcloth or the volatile cleansers to clean it.
7. The installation position of outdoor station and indoor monitor should be about 150 cm height.
8. Power must be shut off when installing.

## ● Warranty

The product is warranted against defects in material and workmanship while used in normal service for a period of 1 year from the date of sale to the original customer. The GEM policy is one of continual development and improvement; therefore GEM reserves the right to change specifications without notice.

## GIANNI INDUSTRIES, INC.

No. 13, Zhong Sing Road, Tu-Cheng Industrial Zone,  
Tu-Cheng City, Taipei, Taiwan 23678  
Tel: 886-2 2267 7986 / Fax: 886-2 2267 9876  
E-Mail: info@gianni.com.tw  
Website: gianni.tw  
Copyright 2008 Gianni industries, inc. All rights reserved.  
DM-CA-VDH-100 Ver. A Published on 2008.09.03



The products are manufactured under an ISO 9001 & QC 080000 Certified Quality Management Program environment back its product quality, performance and commitment to customer satisfaction.