



MPS515 USER'S MANUAL

Information in this document is subject to change without notice.

No part of this document may be reproduced or transmitted in any form or by any means, electronics or mechanical, including photocopying and recording or translated to another language for any purpose without the prior written consent of the manufacturer.

All brand names, logos and registered trademarks mentioned are property of their respective owners.

© 2006. All right reserved.
Version 1.0 062706

Please read this booklet and note the warning statements before using the product.

Warning! Improper use of battery might cause the battery to turn hot or explode.

Table of Contents

Introduction -----	3
Features-----	3
Package Contents-----	3
Overview -----	4
Buttons Operation-----	5
Display-----	6
On-screen-menu Operation-----	7
Power On and Off -----	8
Entering Main Menu Page -----	8
Navigation-----	9
Playing Music -----	9
Skip a Song-----	10
Fast Forward and Backward-----	10
Play Voice-----	10
Skip a Voice-----	11
Fast Forward and Backward-----	11
Setting-----	11
EQ Set-----	11
PlayMode-----	12
Contrast-----	13
Backlight-----	13
Backlight Color-----	13
Power Save-----	13
Recordset-----	14
Language-----	14
Exit-----	15
Record-----	15
Delete-----	15
About-----	16
Exit-----	16
Driver -----	17
Format the MTP Player -----	18
Synchronize MP3 and WMA Files to the Player -----	18
MTP Function being changed into USB Storage Function -----	26
USB Storage Function being changed into MTP Function -----	28
Trouble Shooting -----	31
Technical Specifications -----	33

Introduction

Thank you for choosing our digital MP3 player. You can use this versatile MP3 player not only for playing MP3 and WMA songs, but also recording voice and serving as a USB flash disk.

Features

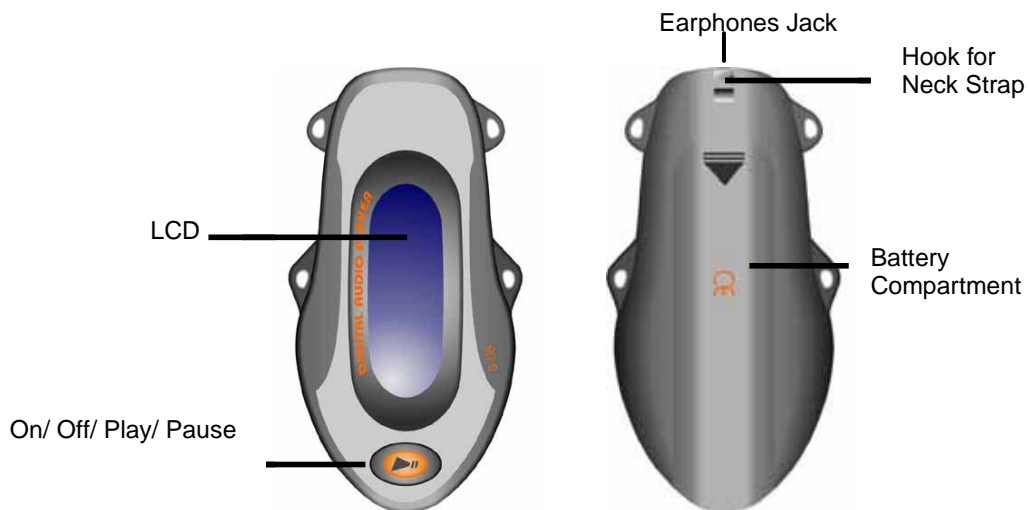
- Large LCD display with backlight
- Support MP3 (MPEG1/2 Layer2), WMA, OGG music playback
- Digital voice recorder
- USB mass storage function for data storage
- 7 EQ settings
- 1xAAA battery supports long playing time
- No driver installation is required (except Windows® 98/98SE)

Package Contents

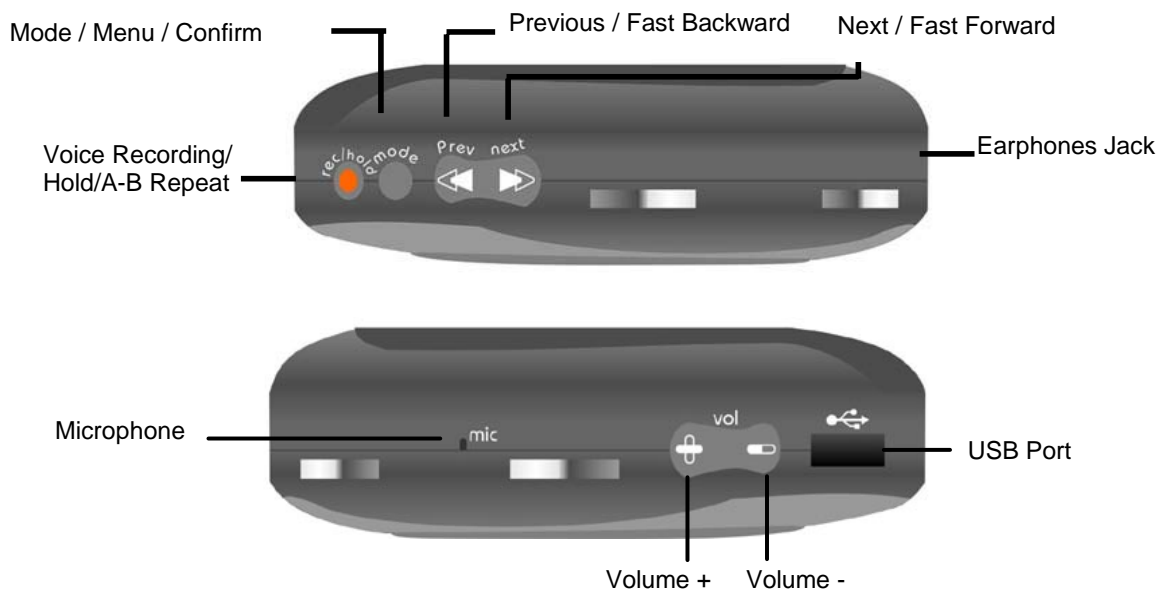
- User's manual
- Standard earphones with neck strap
- 1xAAA battery
- USB cable
- CD including the driver

Overview

Front and Back



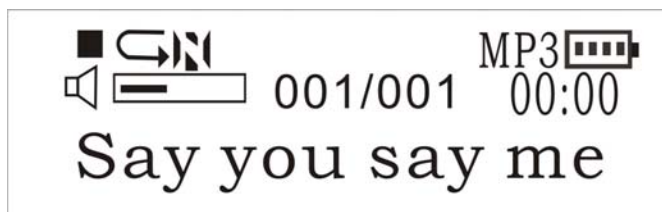
Left and Right



Buttons Operation

	Operation
EARPHONES JACK	Insert the earphones into the earphones jack
USB PORT	Connect the USB cable to the USB port of the computer for uploading the songs
MIC	Microphone for voice recording
NEXT/ FAST FORWARD	<ul style="list-style-type: none"> ● In PLAYING mode, press the button and release it immediately to jump to next song ● Under Menu or Sub-menu page, press the button and release it immediately to jump to next menu items ● In PLAYING mode, press the button and hold it to fast forward
MODE/ CONFIRM/	<ul style="list-style-type: none"> ● In STOP mode, press the button to enter the Main Menu page for changing the modes ● Under Menu or Sub-menu page, press the button to confirm to the selection of menu items
PREVIOUS/ FAST BACKWARD	<ul style="list-style-type: none"> ● In PLAYING mode, press the button and release it immediately to jump to previous song ● Under Menu or Sub-menu page, press the button and release it immediately to jump to previous menu items ● In PLAYING mode, press the button and hold it to fast backward the song
ON/ OFF/ PLAY/ PAUSE/	<ul style="list-style-type: none"> ● In IDLE mode, press and hold the button to turn on the player ● In STOP mode, press and hold the button to turn off the player ● In STOP mode, press the button to play the songs ● In PLAYING mode, press the button to pause the playing song
REC A-B Repeat HOLD	<ul style="list-style-type: none"> ● In STOP mode, press the button to enter VOICE mode, then press the button again to start voice recording ● In PLAYING mode, press the button to set Mark A, then press the button again to set Mark B, the music will be playback from Mark A to Mark B. You can press the button again to disable this function ● In PLAYING/STOP mode, press the button and hold it to lock and unlock the button
VOLUME +	Press and hold the button to increase the volume
VOLUME -	Press and hold the button to decrease the volume
DISPLAY	Display the operating status, lyric with backlight

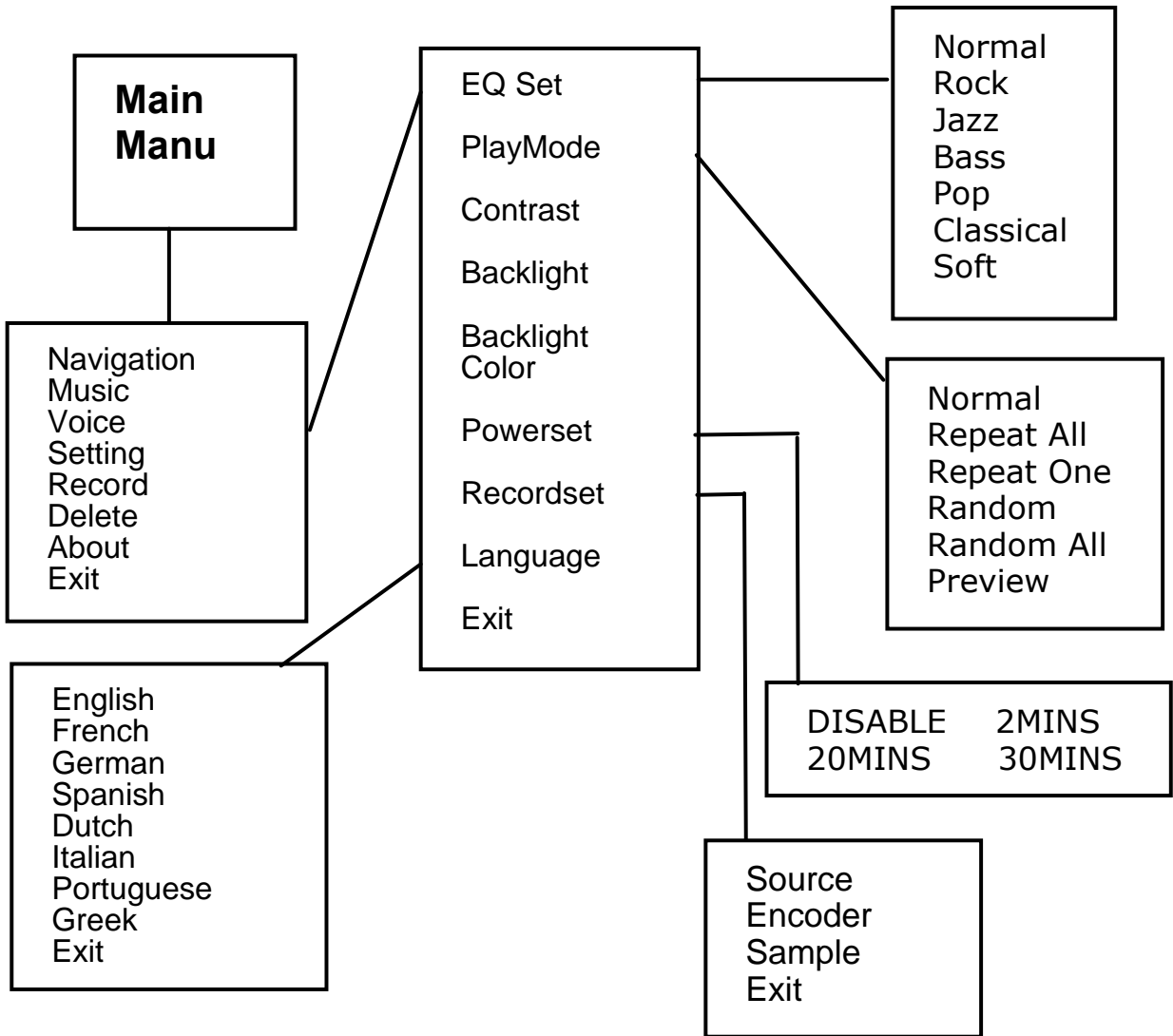
Display



Display Icon	Function
	Repeat Mode Show the current repeat mode used.
	Battery Level Show the battery level.
MP3	The Format of the Playing Music Indicate the format of the playing music, MP3 or WMA.
	Volume Show the volume of the song
Say you say me.wma	The Name of Playing Song Show the playing song currently

On-screen-menu Operation

In STOP/PLAYING mode, press the MODE/CONFIRM button to enter the Main Menu page



Power On and Off

Inserting Battery

Insert 1xAAA battery into battery compartment. Align the “+” and “-” sign as indicated on the battery slot.


Power On

Press and hold ON/OFF button to turn on the player. Release ON/OFF button until “Welcome” appears on the display.


Power Off

In STOP mode, press and hold ON/OFF button to turn off the player. Release ON/OFF button until “BYEBYE” appears on the display.

Battery Level

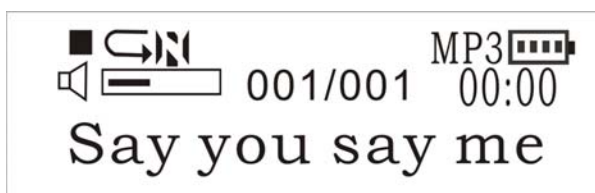
The battery icon  on the display shows the battery level.

Low Battery

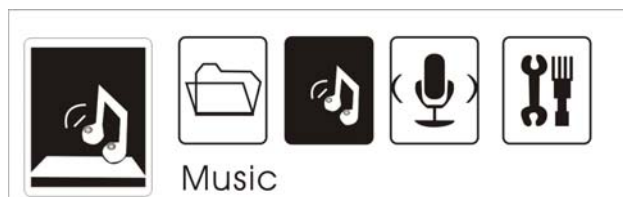
When the battery icon shows in , it indicates the battery power is running out. You should replace a new AAA battery.

Entering Main Menu Page

- 1 Switch the player into STOP mode (No music is playing). The display shows as below.



- 2 Press the MODE/CONFIRM button, then you reach the below Main Menu page. You've entered the Main Menu page.



- 3 Press NEXT button to jump to other menu items in sequence of Navigation, Music, Voice, Setting, Record, Delete, About and Exit.
- 4 Select your desired menu item and press MODE/CONFIRM button again to enter sub-menu page.

Navigation

1. After entering Main Menu page, select Navigation and press MODE/CONFIRM button to enter Multi-level folder management mode.



2. The display will enter to Root folder. Press NEXT/ PREV button to select your desired folder.
3. Press the MODE button to enter sub-folder.
4. After entering the folder, press NEXT/ PREV button to select your desired song.
5. Press PLAY button to play the songs
- 6 Press REC/HOLD button to return to previous folder.

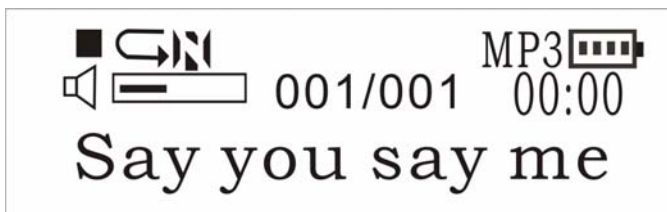
Play Music

1. After entering Main Menu page, select Play Music and press MODE/CONFIRM button to enter Playing Song mode.

Note: Only .MP3 and .WMA format will be played under Playing Song mode.



- The display will return to the following screen in STOP mode.



- Press PREV/ NEXT button to select your desired song.
- Press PLAY button to start playing selected MP3 or WMA music. If there is no MP3 and WMA files, "No Music Files" will show on the display.

Skip a Song

Press PREV/NEXT button and release it immediately to jump to next or previous song.

Fast Forward and Backward

Press PREV/NEXT button and hold it to fast forward or backward.

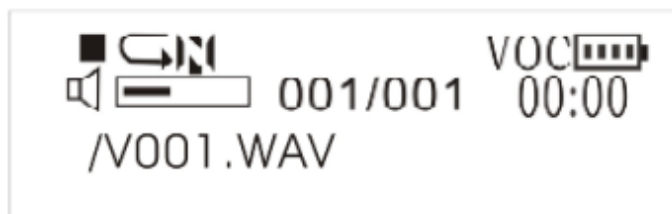
*Note: Refer to **Overview** section for detailed buttons operation.*

Play Voice

- After entering Main Menu page, select Play Voice and press MODE/CONFIRM button to enter Playing Recorded Voice mode.



- The display will return to the following screen in STOP mode.



- Press PREV/ NEXT button to select your desired voice.

4. Press PLAY button to start playing selected audio files. If there is no recorded audio file, “No VOC File” will show on the display.

Skip a Voice

Press PREV/NEXT button and release it immediately to jump to next or previous recorded voice.

Fast Forward and Backward

Press PREV/NEXT button and hold it to fast forward or backward.

*Note: Refer to **Overview** section for detailed buttons operation.*

Setting

1. After entering Main Menu page, press PREV/NEXT to select Setting Function.



2. Press MODE/CONFIRM button to enter Sys Function menu page.

EQ Set
PlayMode
Contrast
Backlight
Backlight Color
Powerset
Recordset
Language
Exit

EQ Set

1. In Setting menu, press MODE/CONFIRM button to select EQ Set to enter the EQ mode. Seven EQ modes are available: Normal, Rock, Jazz, Bass, Pop, Classical and Soft.
2. Press PREV/NEXT button to change the desired EQ mode and press MODE/CONFIRM button to confirm the EQ mode.
3. The setting of EQ mode is able to apply in Playing Song and Playing Recorded Voice mode.

The setting of **Repeat** mode is able to apply in **Playing Song** and **Playing Recorded Voice** mode.

PlayMode

In PlayMode Menu, press PREV/NEXT button to select the desired Repeat mode. Seven Repeat Modes are available: Normal, Repeat One, Repeat All, Random, Random All, Preview.

Normal

All music will be played one by one and stopped at the last music until you disable this function.

Repeat One

The playing music will be re-played until you disable this function.

Repeat All

All music will be played from the beginning to the last one and then repeated again and again until you disable this function.

Random

All music in the player will be randomly played until all music are finished playing.

Random All

All music in the player will be randomly playback until you disable this function.

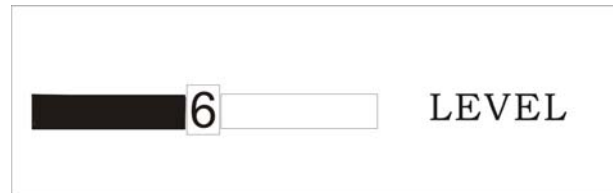
Preview

All music from the current one to the last one will play for 10 seconds one by one until you disable this function.

The setting of **Repeat** mode is able to apply in **Playing Song** and **Playing Recorded Voice** mode.

Contrast

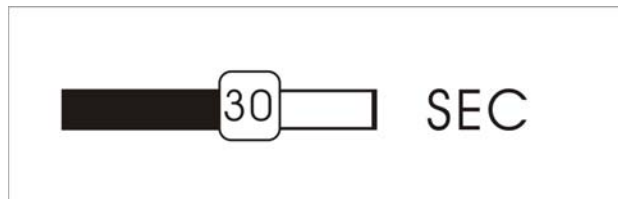
1. After entering Setting menu, select Contrast by press PREV/NEXT to increase or decrease the contrast of the display.



2. Press MODE/CONFIRM button to confirm the desired contrast rate.

Backlight

1. After entering Setting menu, select Backlight by press PREV/NEXT button to set the backlight duration. The backlight duration can be set in the range of 0 to 45 seconds.



2. Press MODE/CONFIRM button to confirm the desired backlight duration.

Backlight Color

After entering Setting menu, select Backlight Color. The backlight color can be set in seven colors.

You can press PREV/NEXT button to select your desired color, or select Auto that the backlight color will be changed in sequence once any button is pressed.

Power Save

In order to save power, it can be allowed to set a off time.

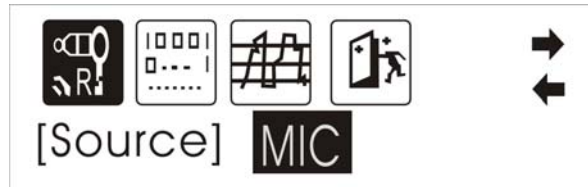
After entering Setting menu, select Power Save by pressing MODE/CONFIRM button to enter this menu. The Off Time can be set in the sequence of DISABLE, 2MINS, 5MINS, 10MINS.



You may set “DISABLE” to disable this function.

Recordset

After entering Setting menu, select Recordset by pressing MODE/CONFIRM button to enter this menu.



Press the PREVIOUS/NEXT button to select items including Source, Encoder, Sample and Exit.

Source

Only MIC mode is available in Source.

Encoder

Press MODE/CONFIRM button to select the different Encoder including IMADPCM, MSADPCM and ADPCM.

Sample

Press MODE/CONFIRM button to select the different data including 8000Hz, 11025Hz, 16000Hz, 22050Hz, 32000Hz, 44100Hz and 48000Hz.

Exit

Press MODE/CONFIRM button to select this item to get back to the Setting Menu.

Language

After entering Sys Function menu page, press PREVIOUS/NEXT to select Language Function. Languages are available as below.



Exit

Press this Exit item to get back to the Setting mode.

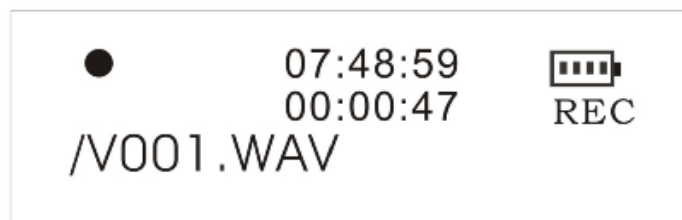


Record

1. After entering Main Menu page, select Record and press MODE/CONFIRM button to enter Recording Voice mode.



2. The following display will be shown once you've entered Record Voice mode and start record



3. Put the sound source near the built-in microphone. You are allowed to press PAUSE/PLAY button to pause or continue the recording.

When you finished the recording, press MODE/CONFIRM button and get back to the STOP mode. The recorded audio files will be automatically saved under Root Directory as default. You can check the recorded audio files by pressing PREV/NEXT button.

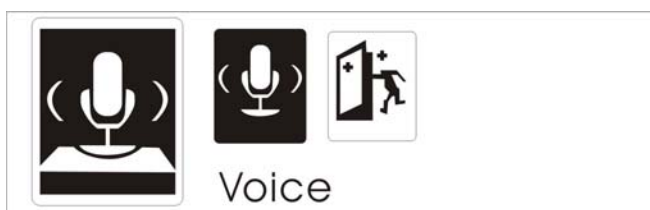
Delete

- 1, After entering Main Menu page, select “Delete” and press MODE/CONFIRM button to enter Delete function.

Note: This function is able to delete Voice file only.



- 2, The following display will be shown once you’ve entered Delete function and select Voice by pressing MODE/CONFIRM button.



- 3, Press PREVIOUS/ NEXT button to select the Voice files that you want to delete.
- 4, Press Volumn + /Volumn – to select “Yes” or “No”. If you selected “Yes”, “file deleted” will show on the display. You can press REC/HOLD button to get back to the Sub-menu.

About

After entering Setting menu page, select About item by pressing MODE/CONFIRM button. The MEM Info and the version of the firmware will be shown on the display for reference.



Exit

Press this Exit item to get back to the STOP Mode.



Driver

Windows® 98 and MAC OS

Windows® 98 (first edition) and MACOS are not supported.

Windows® 98SE

If the player is running on Windows® 98SE, please install the driver by going through the following instruction in details before using the player. The driver must be installed on your computer to make your player work properly with your computer. Please skip the following instructions for driver installation.

Step 1. Before you install the driver, please don't connect the player to the computer

Step 2. Insert the CD into your computer, click Setup.exe and the installation will start.

Step 3. Follow the on-screen instructions to complete the driver installation and restart your computer.

Step 4. Connect the player to your computer and a *Removable Disk* will appear for drag-and-drop of the music files

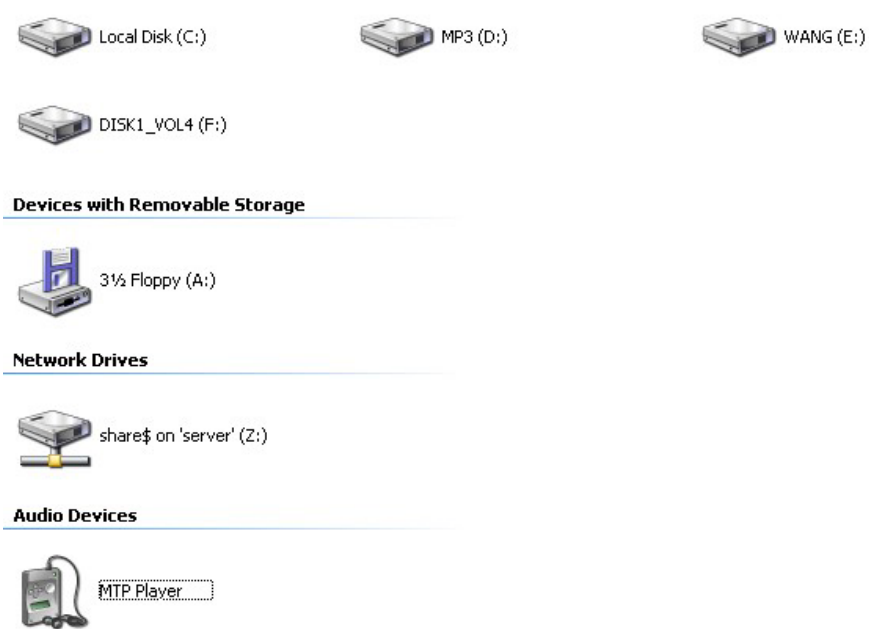
**Note* For Windows®Me/XP platform, it is unnecessary for installing driver before using.

System Requirements

- PC with Pentium class or faster processor
- 64MB RAM
- USB port
- CD-ROM drive for software installation
- 30MB free hard disk space
- Windows® 98SE

Format the MTP Player

Step 1: Click the MTP Player in My Computer by pressing the right button of the mouse and select “Format...”



Step 2: A dialog box will appear to guide how to format. Click OK to proceed.

Audio Devices



Then the MTP Player will be format accordingly.

Synchronize MP3 and WMA Files to the Player

Please operate the following procedure in *licensed Windows® XP operation system* with **Windows® Media Player 10**.

Noted: MAC OS and Windows® 98/98SE/Me are not supported for WMDRM songs playback.

Note: The player with WMDRM10 is only allowed for user to download music legally and validly from the distribution licensees of WMA songs which are posted on the corporate website of Microsoft®. Please make sure that the WMA songs are downloaded from these distribution licensees and frequently check the most updated distribution licensees on the corporate website of Microsoft®.

If the music is downloaded illegally, the songs could not be played normally.

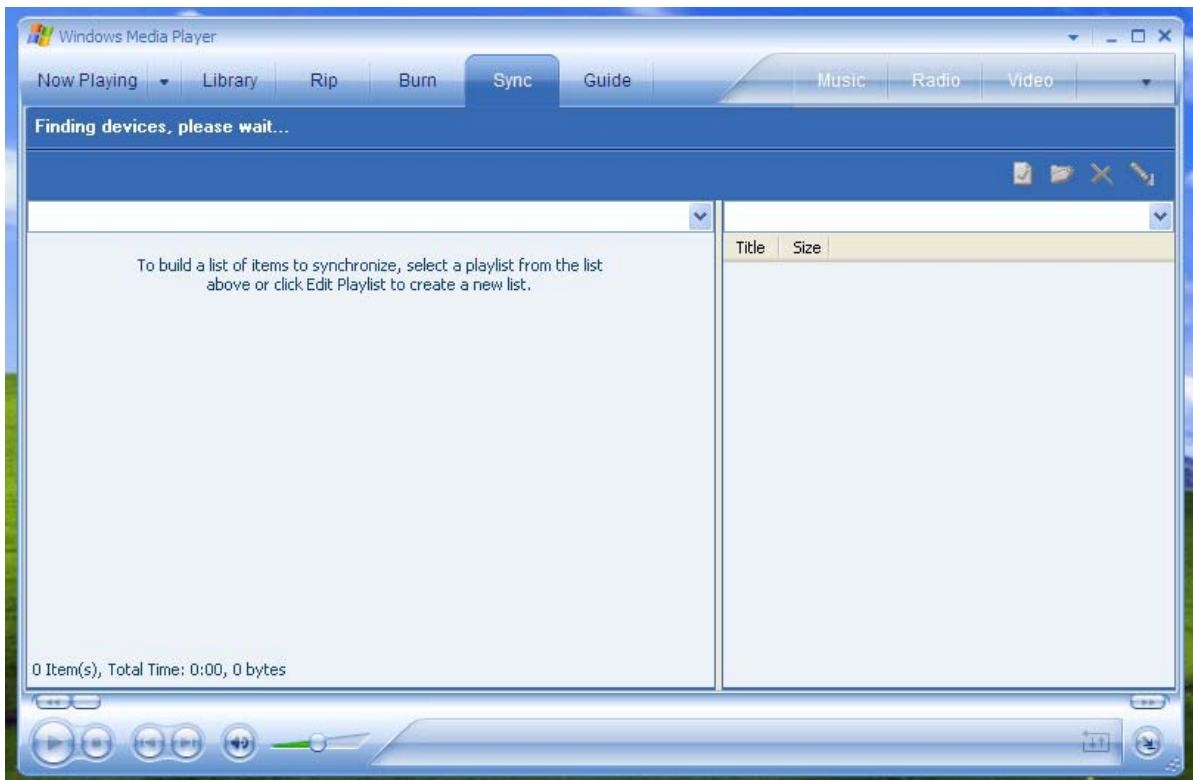
Step 1. Connect the MP3 player to the computer with USB Cable, It will show an icon at the right-bottom corner of the desktop.



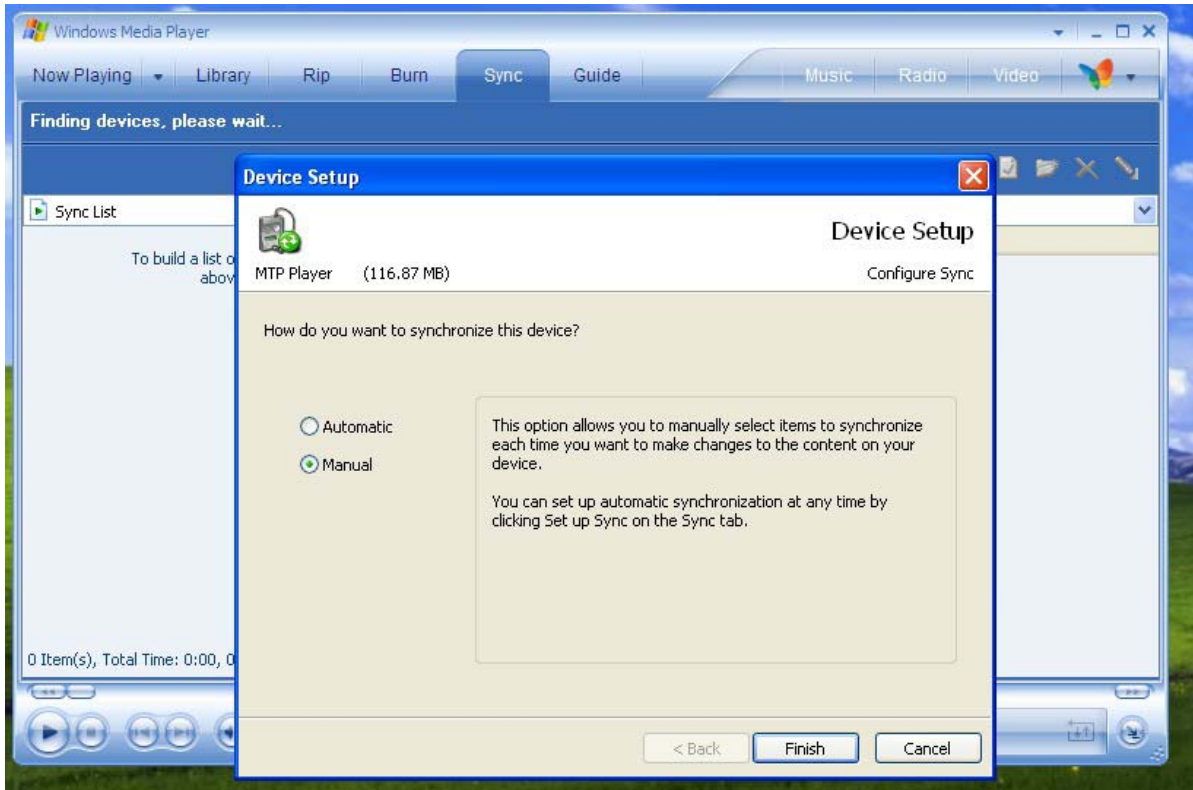
Step 2. A dialog box will appear as follows, choose the Media Player icon and click OK to proceed.



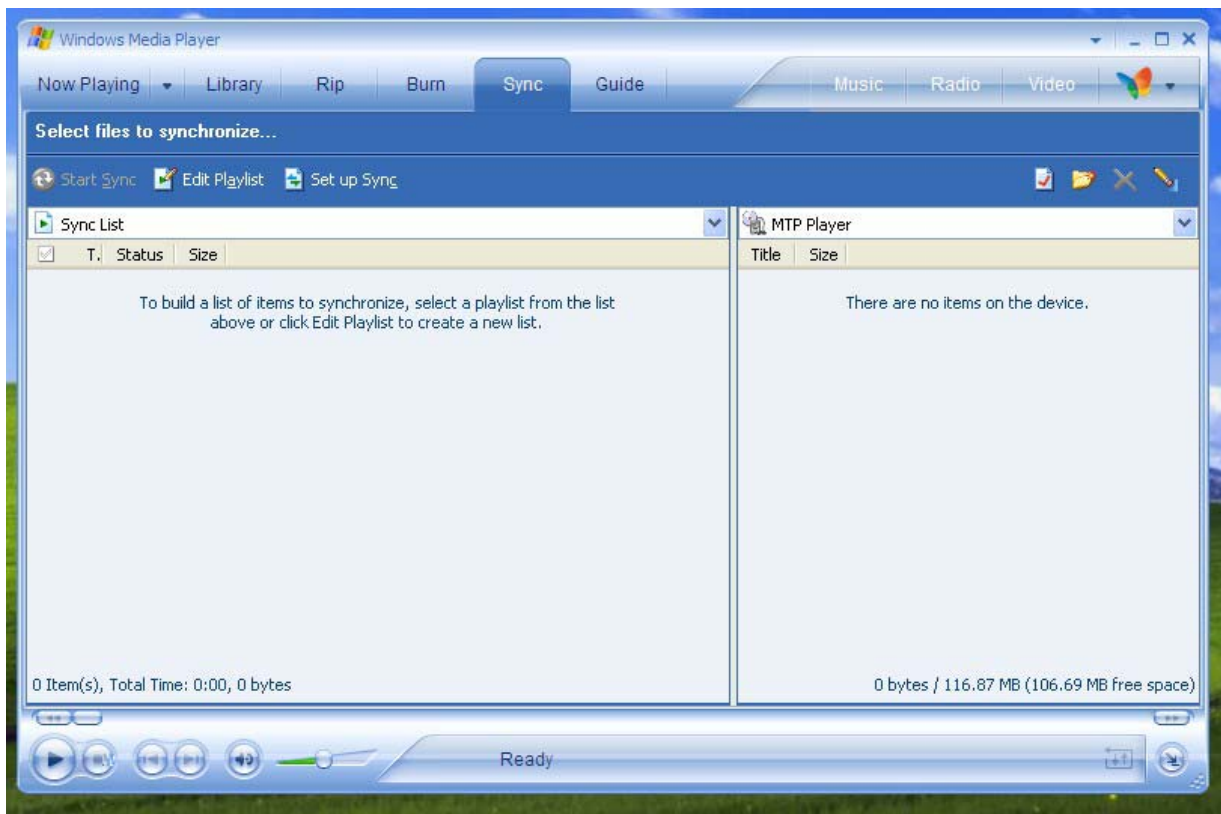
Step 3. The Media Player will find device automatically as follows



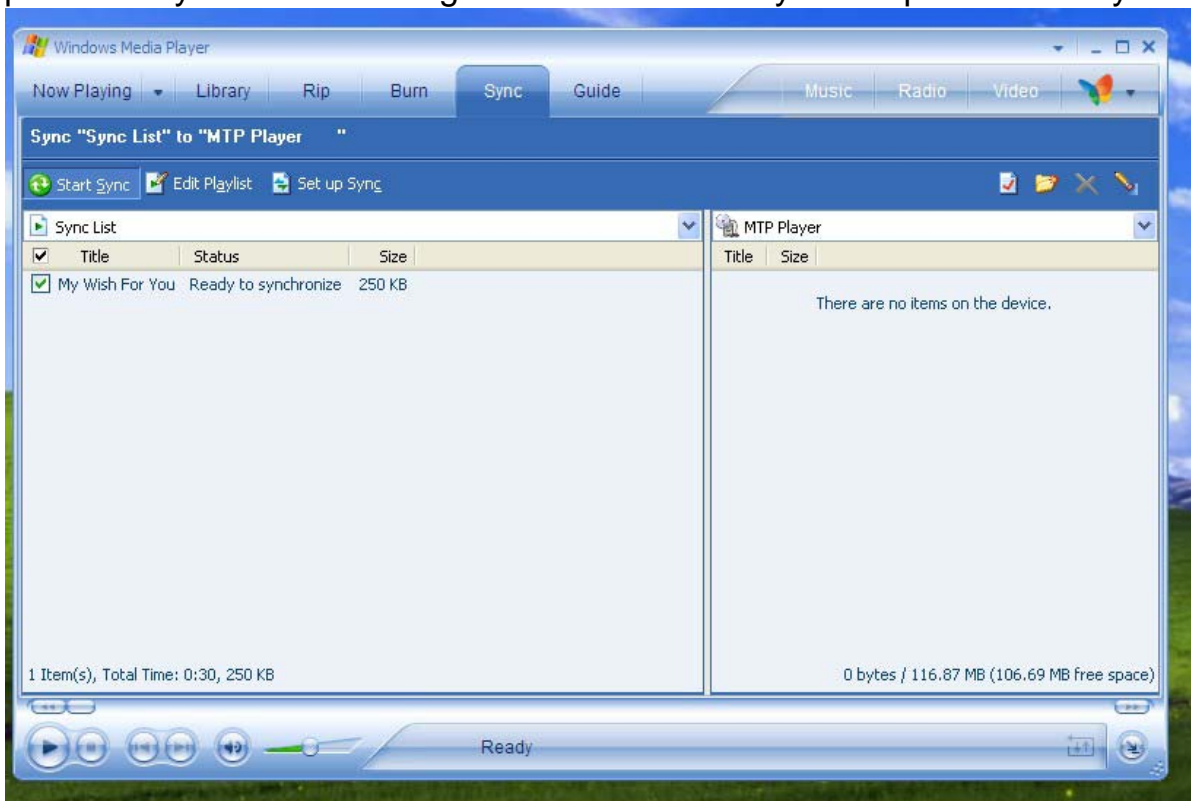
Step 4. Soon a dialog box will appear, Choose Manual and click Finish to proceed.



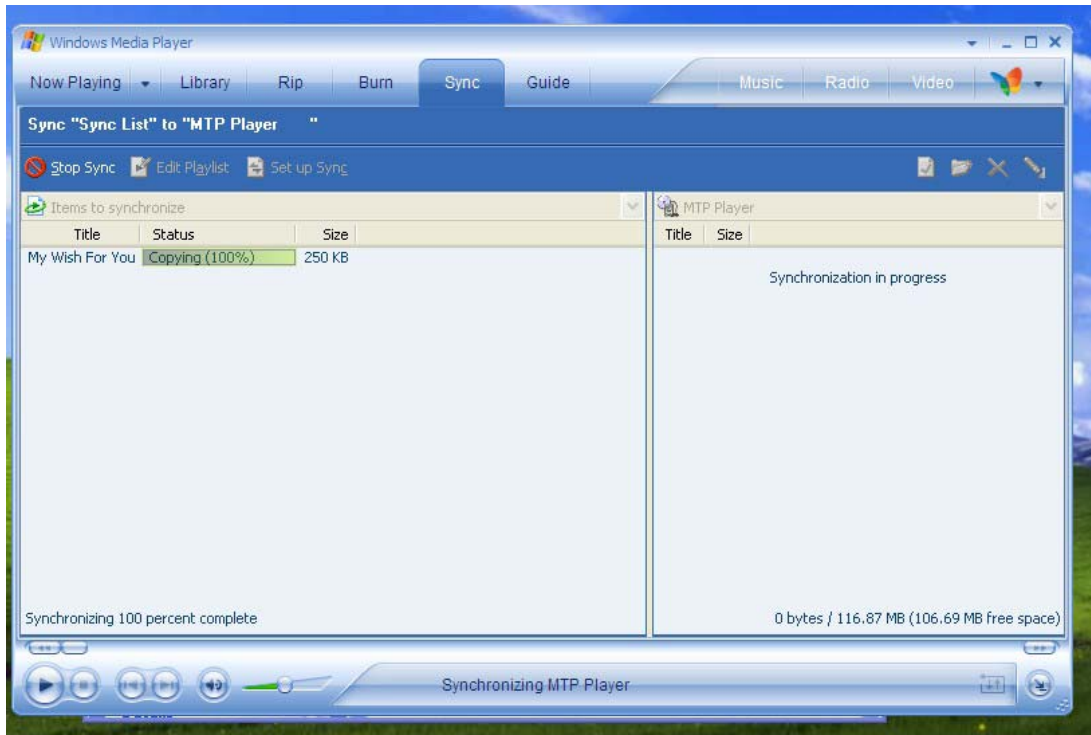
Step 5. The Media Player will enter the operation status as follows.



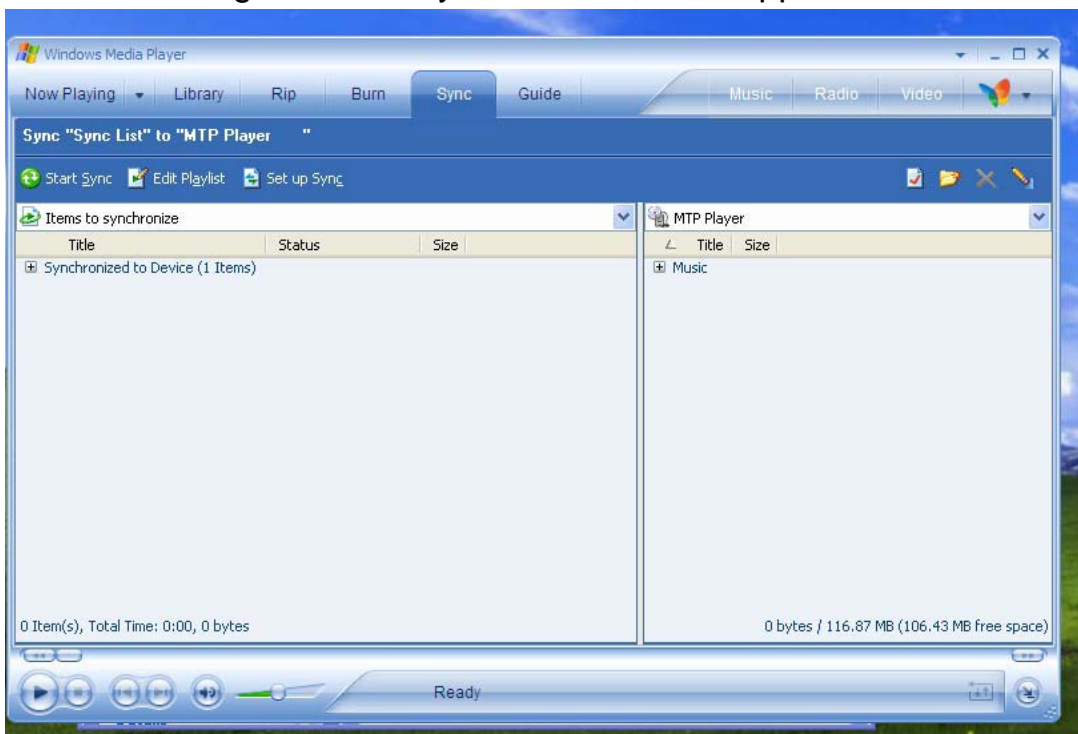
Step 6. Select your desired songs into the Media Player and press Start Sync.



Step 7. The song you selected will be synchronized into the Software of Media Player and the MP3 Player.



Step 8. Once the song has been synchronized, it will appear as follows.

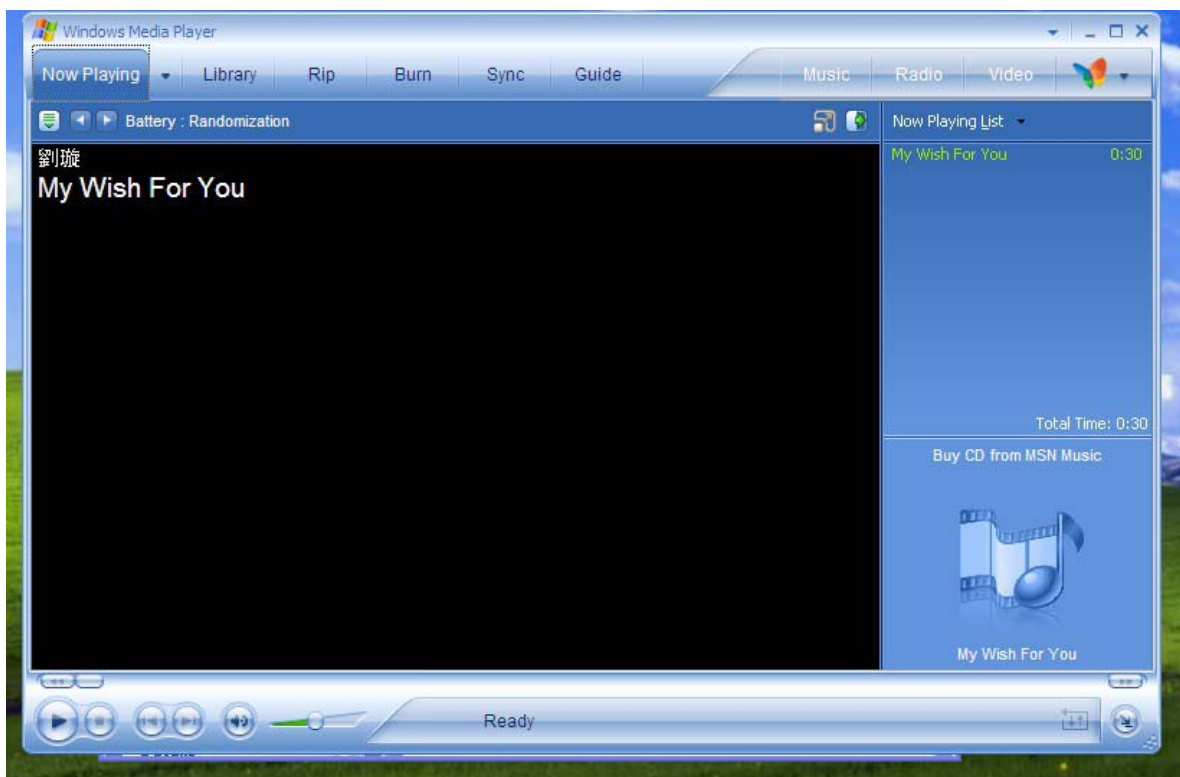


Tips: Each WMDRM song is limited by an **expiry date** or **number of times for synchronization** from the computer to the player. This limitation of the expiry dates the synchronization times depend on different distribution licensees and different songs when you purchase. The WMDRM songs should be synchronized from the computer to the player within **number of synchronization times** by the specified **expiry date**.

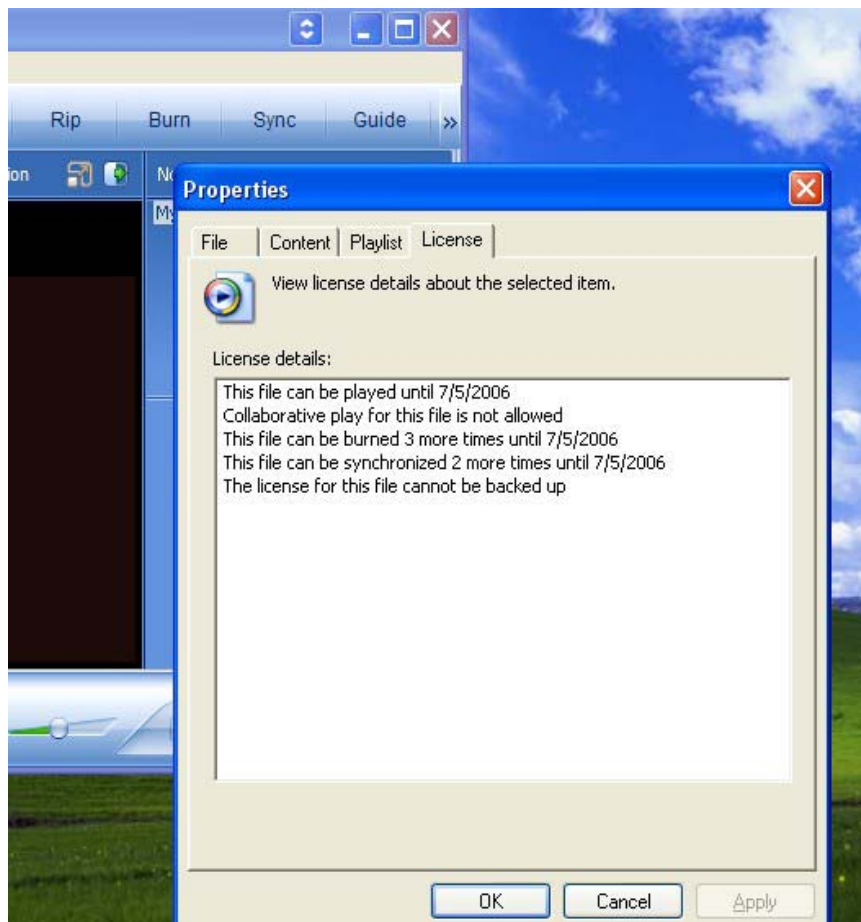
*Note: The songs cannot be played if the **synchronization time is exceeded** or **the synchronization is performed beyond the expiry date**.*

If WMDRM song cannot be played on the player normally or the synchronization cannot be done successfully from the computer to the player, please check whether the song is expired or not. Please operate the following procedure.

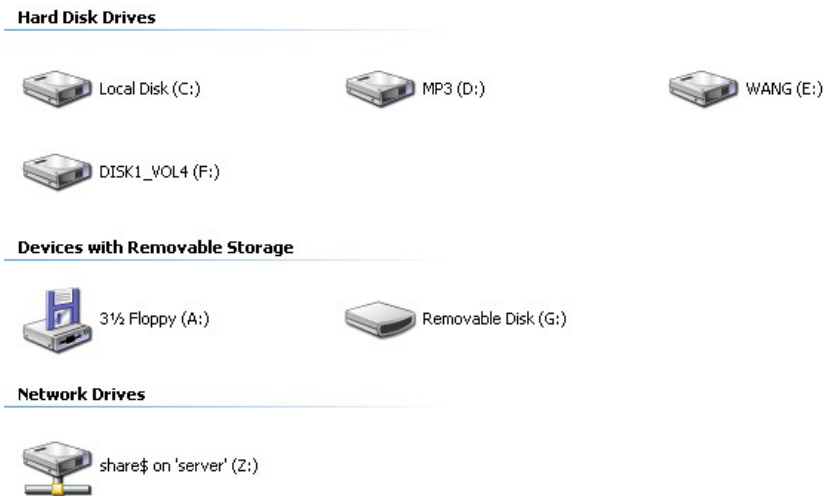
Step1: Click the song by pressing the right button of the mouse and select "Properties".



Step 2. A dialog box will appear as follows, Click the license for checking the song is expired or not.

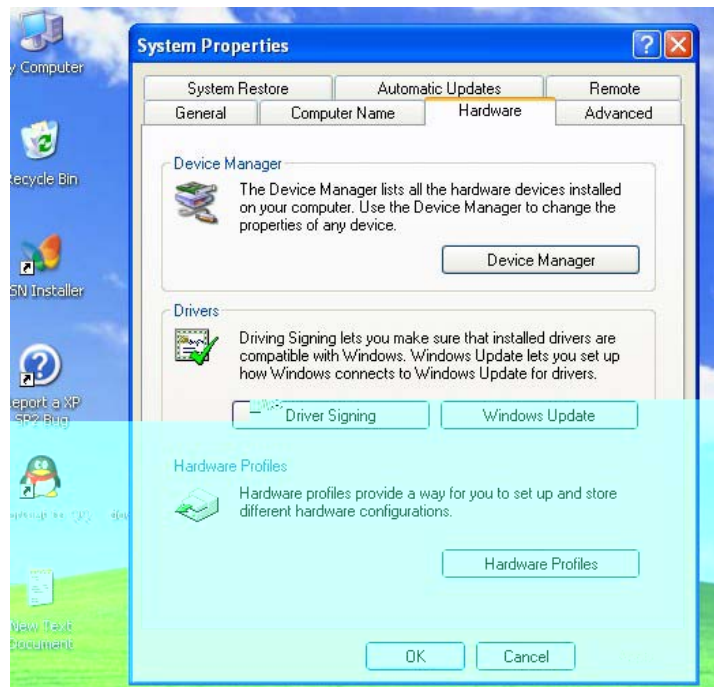


Step 5: Follow the tips of Dialog Box by clicking the “Next >” button to finish updating. The procedure should be : Install from a list or specific location (Advanced) – Don’t search. I will choose the driver to install – USB Mass Storage Device– Finish. The Removable Disk will appear in My Computer.

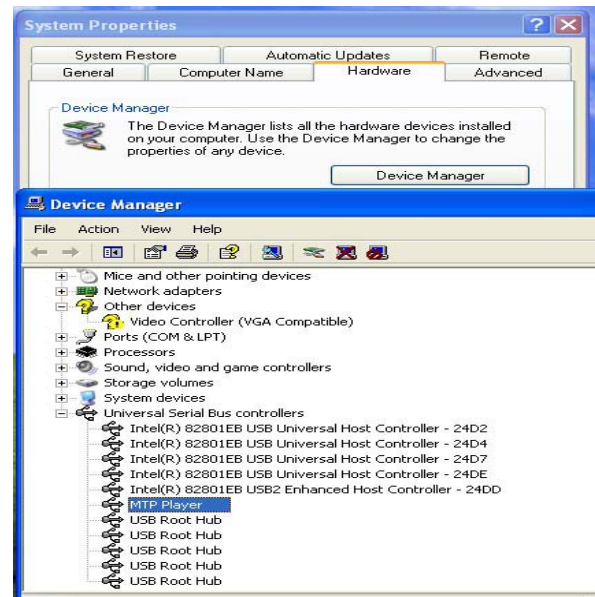


USB Storage Function being changed into MTP Function

Step 1: Click My Computer by pressing the right bottom of the mouse, choose the Hardware menu.



Step 2: Select Device Manager and pick up MTP Player on the sub-menu of Universal Serial Bus controllers.



Step 3: Click MTP Player by pressing right Button of the mouse and choose Driver menu.

Step 4: Click “Update Driver ...” to proceed.



Step 5: Follow the tips of Dialog Box by clicking the “Next >” button to finish updating. The procedure should be : Install from a list or specific location (Advanced) – Don’t search. I will choose the driver to install – MTP Player – Finish. The MTP Player will appear in My Computer.



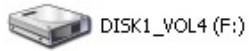
Local Disk (C:)



MP3 (D:)



WANG (E:)



DISK1_VOL4 (F:)

Devices with Removable Storage



3 1/2 Floppy (A:)

Network Drives



share\$ on 'server' (Z:)

Audio Devices



MTP Player

Trouble Shooting

Symptom	Reasons	Solution
Press the POWER button, the display does not turn on	The battery run out	Replace new battery
After turning on the player, no response is given when pressing any buttons	HOLD button is locked	Check if HOLD button is locked, press and hold Mode to unlock button
After plugging the player into the USB port of your computer, Removable Disk Drive cannot be found in My Computer	It runs in the default MTP Player status	Change the MTP Player moded into USB Storage Mode accordingly
	The software utilities of the player (included in CD) conflicts with other software drivers which were installed on your computer	<ul style="list-style-type: none"> ● Uninstall the software utilities of the player ● Restart your computer ● Re-install the software utilities again
	Your motherboard doesn't support the USB connection	Contact the manufacturer of your motherboard to upgrade the motherboard driver
The music file on the player cannot be deleted	The attribute of the music file sets as <i>Read Only</i>	Change the attribute of the music file
The playing time displays in disorder when playing a mp3 music	A mp3 music file is currently compressed in VBR format, which can vary the compression speed of a mp3 music. When the mp3 music is playing, the variable speed will cause the playing time displays in disorder	Compress the mp3 music in fix compression speed rather than variable compression speed
When the player is connected or disconnect to/from your computer, there is an unusual error on the computer	It's due to the sudden disconnection of USB port during transferring the files	It is recommended the user should not suddenly unplug the player from the USB port of computer when the files are being transferred or the internal memory is being formatted.
My player can't play the mp3 music files	Most of mp3 music files in the market are compressed in MPEG1, MPEG2, LAYER3 standard. In earlier days, some mp3 music are compressed in MPEG1	If the mp3 player can't play the mp3 music file, skip to the next song until the mp3 music files are not compressed in MPEG1 LAYER1 /MPEG1 LAYER2.

	LAYER1 and MPEG1 LAYER2. Please note our player doesn't support MPEG1 LAYER1, MPEG1 LAYER2 or an mp3 compressed in more than one compression standards.	Delete those files which can't be played in the player Change the compression standard of a mp3 music file in MPEG1 LAYER3
If the music file can't be played normally or you hear a long beep sound	The player doesn't support such compression standard of the playing music file	The player just can support MPEG1 MPEG2 LAYER3 and WMA music files
	Out of the range of compression speed	<ul style="list-style-type: none"> ● The range of MP3 compression speed: 32Kbps~384Kbps ● The range of WMA compression speed: 64Kbps~128Kbps
	Tips: If you don't know the compression standard and speed of the music file, you should use those common music players (i.e. Winamp) to check the music information.	
The computer can't detect the USB cable	No driver was installed on Windows® 98/98SE	Install driver
	Unsafely remove the USB cable	Format the internal memory

Technical Specifications

Capacity	512MB
Display	LCD display with backlight
Interface	USB 2.0 full speed
Power	1xAAA battery
File type	.MP3 (32kbps – 384kbps), .WMA (64kbps – 128kbps) for music at Constant Bit Rate .ACT and .WAV for recorded audio files .OGG Vorbis Encoded File Format
S/N ratio	90dB
Earphones output power	9mWx, 32ohm
Operating System	Windows® 98SE/Me/2000/XP MAC OS and Windows® 98 (first edition) are not supported.
Dimensions	37mm(W) x 75mm(H) x 25mm(D)
Weight	29g