



ENGLISH

OWNER'S MANUAL

LCD MONITOR

Please read this manual carefully before operating your set and retain it for future reference.

LCD MONITOR MODEL
ME20CR

www.lg.com

This unit has been engineered and manufactured to ensure your personal safety, however improper use may result in potential electrical shock or fire hazards. In order to allow the proper operation of all safeguards incorporated in this display, observe the following basic rules for its installation, use, and servicing.

On Safety

Use only the power cord supplied with the unit. If you use another power cord, make sure that it is certified by the applicable national standards when not provided by the supplier. If the power cable is faulty in any way, please contact the manufacturer or the nearest authorized repair service provider for a replacement.

The appliance coupler is used as the disconnect device.

Please make sure the device is installed near the wall outlet to which it is connected and that the outlet is easily accessible.

Operate the display only from a power source indicated in the specifications of this manual or listed on the display. If you are not sure what type of power supply you have in your home, consult with your dealer.

Overloaded AC outlets and extension cords are dangerous. So are frayed power cords and broken plugs. They may result in a shock or fire hazard. Call your service technician for replacement.

As long as this unit is connected to the AC wall outlet, it is not disconnected from the AC power source even if the unit is turned off.

Do not Open the Display:

- There are no user serviceable components inside.
- There are Dangerous High Voltages inside, even when the power is OFF.
- Contact your dealer if the display is not operating properly.

To Avoid Personal Injury :

- Do not place the display on a sloping shelf unless properly secured.
- Use only a stand recommended by the manufacturer.
- Do not drop an object on or apply impact to the product. Do not throw any toys or objects on the product screen.
It can cause injury to human, problem to product and damage the display.

To Prevent Fire or Hazards:

- Always turn the display OFF if you leave the room for more than a short period of time. Never leave the display ON when leaving the house.
- Keep children from dropping or pushing objects into the display's cabinet openings. Some internal parts carry hazardous voltages.
- Do not add accessories that have not been designed for this display.
- When the display is to be left unattended for an extended period of time, unplug it from the wall outlet.
- In the presence of thunder and lightning, never touch the power cord and signal cable because it can be very dangerous. It can cause electric shock.

On Installation

Do not allow anything to rest upon or roll over the power cord, and do not place the display where the power cord is subject to damage.

Do not use this display near water such as near a bathtub, washbowl, kitchen sink, laundry tub, in a wet basement, or near a swimming pool.

Displays are provided with ventilation openings in the cabinet to allow the release of heat generated during operation. If these openings are blocked, built-up heat can cause failures which may result in a fire hazard. Therefore, NEVER:

- Block the bottom ventilation slots by placing the display on a bed, sofa, rug, etc.
- Place the display in a built-in enclosure unless proper ventilation is provided.
- Cover the openings with cloth or other material.
- Place the display near or over a radiator or heat source.

Do not rub or strike the Active Matrix LCD with anything hard as this may scratch, mar, or damage the Active Matrix LCD permanently.

Do not press the LCD screen with your finger for a long time as this may cause some afterimages.

Some dot defects may appear as Red, Green or Blue spots on the screen. However, this will have no impact or effect on the display performance.

If possible, use the recommended resolution to obtain the best image quality for your LCD display. If used under any mode except the recommended resolution, some scaled or processed images may appear on the screen. However, this is characteristic of the fixed-resolution LCD panel.

Leaving a fixed image on the screen for a long time may cause damage to the screen and cause image burn-in. Make sure to use a screen saver on the product. Burn-in and related problems are not covered by the warranty on this product.

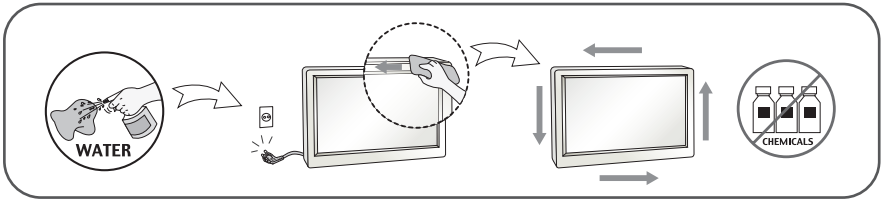
Do not shock or scratch the front and sides of the screen with metallic objects. Otherwise, it may cause damage to the screen.

Make sure the panel faces forward and hold it with both hands to move. If you drop the product, the damaged product can cause electric shock or fire. Contact an authorized the service center for repair.

Avoid high temperatures and humidity.

On Cleaning

- Unplug the display before cleaning the face of the display screen.
- Use a slightly damp (not wet) cloth. Do not use an aerosol directly on the display screen because over-spraying may cause electrical shock.
- When cleaning the product, unplug the power cord and scrub gently with a soft cloth to prevent scratching. Do not clean with a wet cloth or spray water or other liquids directly onto the product. An electric shock may occur. (Do not use chemicals such as benzene, paint thinners or alcohol)
- Spray water onto a soft cloth 2 to 4 times, and use it to clean the front frame; wipe in one direction only. Too much moisture may cause staining.



On Repacking

- Do not throw away the carton and packing materials. They make an ideal container in which to transport the unit. When shipping the unit to another location, repack it in its original material.

On Disposal (Only, Hg lamp used LCD Monitor)

- The fluorescent lamp used in this product contains a small amount of mercury.
- Do not dispose of this product with general household waste.
- Disposal of this product must be carried out in accordance to the regulations of your local authority.

!!! Thank you for selecting LGE products !!!

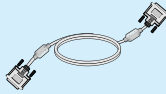
**Please make sure the following items are included with your monitor.
If any items are missing, contact your reseller.**



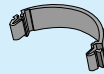
Owner's Manual/Cards



Power Cord



DVI-D Signal Cable
(This feature is not available in
all countries.)



Cable Holder

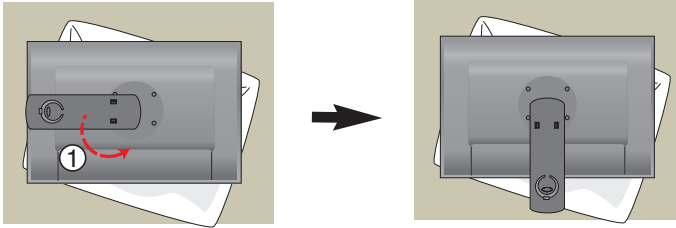
NOTE

- This accessories may look different from those shown here.
- User must use shielded signal interface cables (DVI-D cable) with ferrite cores to maintain standard compliance for the product.

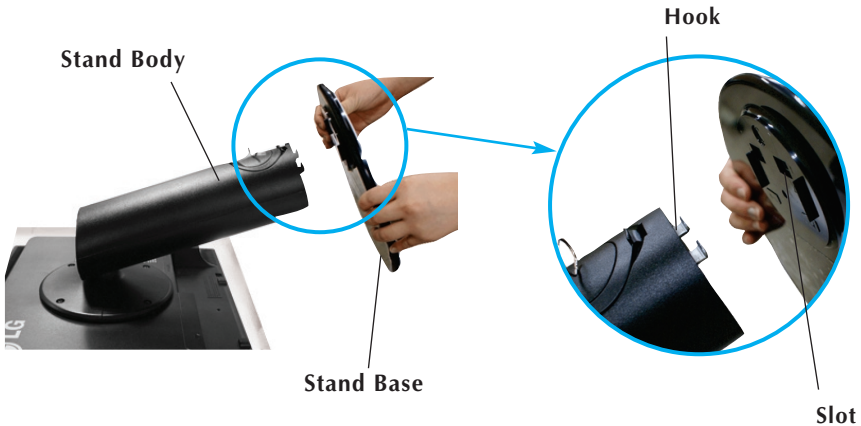
Before setting up the monitor, ensure that the power to the monitor, the computer system, and other attached devices is turned off.

Connecting the stand base or Removing the stand base

1. Place the monitor with its front facing downward on a cushion or soft cloth.
2. Rotate the Stand Body as shown in figure ①.



3. Align the hooks on the stand base with the matching slots in the base of the monitor.
4. Insert the hooks into slots.

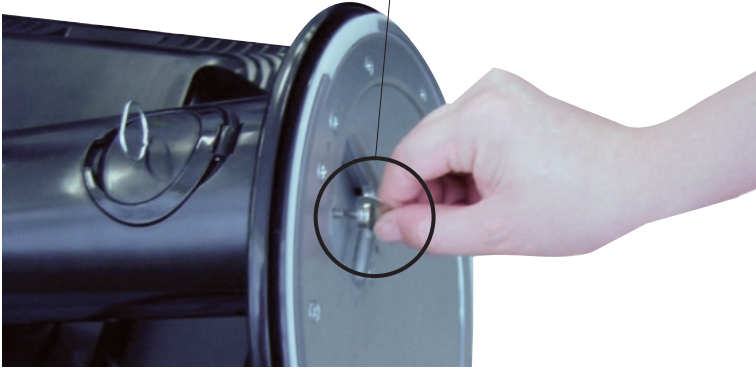


WARNING

- The tape and locking pin may only be removed from those monitors equipped with a standing base when the base is pulled up. Otherwise, you may be injured by the protruding sections of the stand.
- **Product Handling with Care** : When you lift up or move the product, Do Not hold or touch the front part of LCD panel. It will damage the panel. (Please hold the Stand Body or plastic cover of the product.)

5. Attach the monitor to the Stand Base by turning the screw to the right.

Screw : Turn the screw by using the screw handle.



6. Lift and turn the monitor to face towards the front after the connection is made to the female part of the cable you're attaching.
7. Take the screw out by turning to the left to separate the monitor and Stand Base.

IMPORTANT

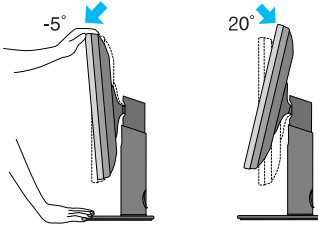
- This illustration depicts the general model of connection. Your monitor may differ from the items shown in the picture.
- Do not carry the product upside down holding only the stand base. The product may fall and get damaged or injure your foot.

Before setting up the monitor, ensure that the power to the monitor, the computer system, and other attached devices are turned off.

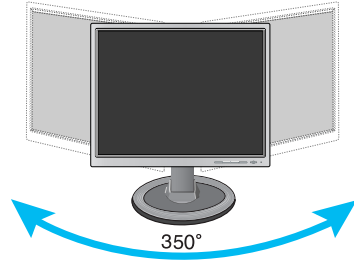
Positioning your display

1. Adjust the position of the panel in various ways for maximum comfort.

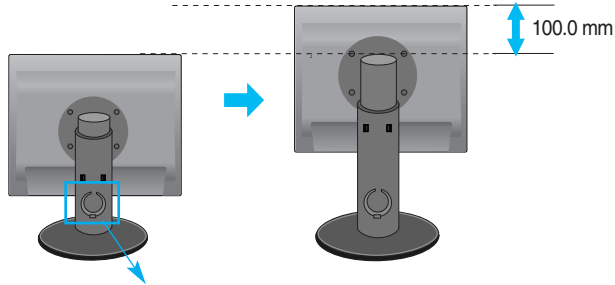
■ Tilt Range : -5° to 20°



■ Swivel : 350°



■ Height Range : maximum 100.0 mm (3.94 inch)



* Please be sure to remove the Locking pin to adjust the height.

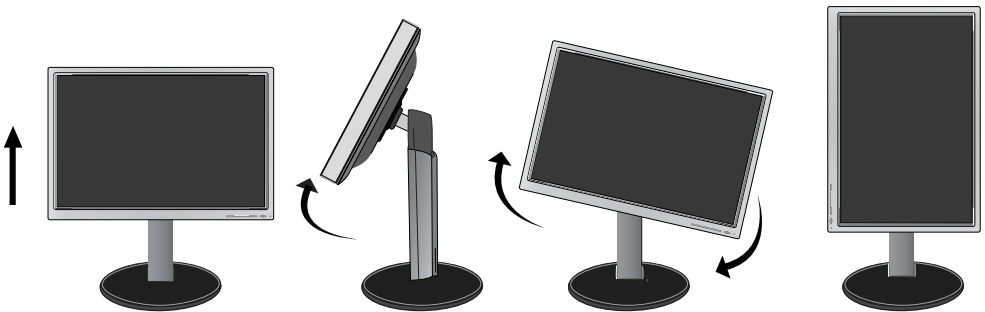
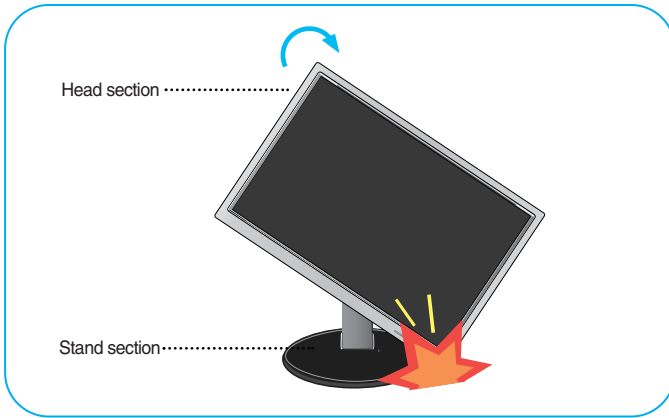
WARNING

■ You do not need to replace the Locking pin after it is removed, to adjust its height.

Using the Pivot function

-The pivot function allows you to rotate the screen 90 degrees clockwise.

1. Lift the monitor to its highest height to utilize the Pivot function.
2. Landscape & Portrait : You can rotate the panel 90° clockwise.
Please be cautious and avoid contact between the monitor head and the Stand Base when rotating the screen to access the Pivot function. If the monitor head touches the Stand Base, then the Stand Base could crack.



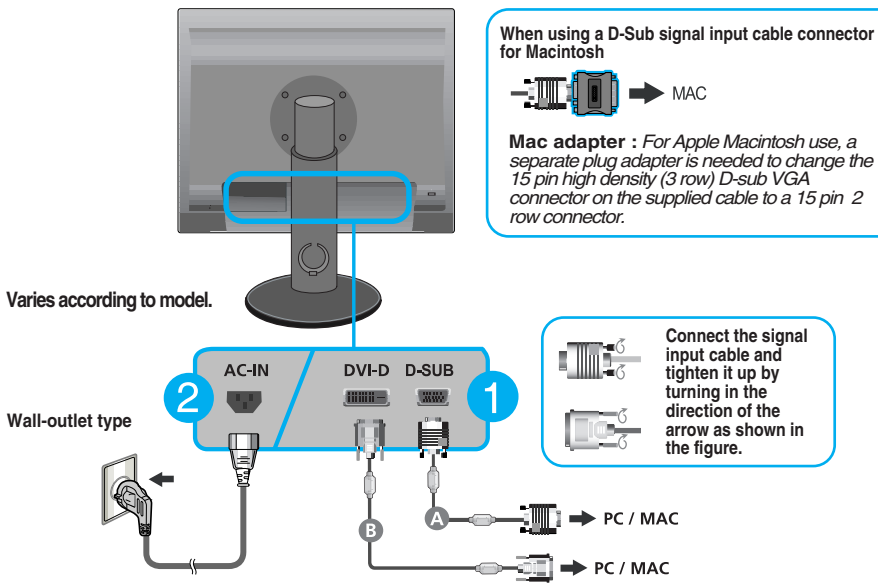
Connecting with the PC equipment


1. Before setting up the monitor, ensure that the power to the monitor, the computer system, and other attached devices is turned off.
2. Connect signal input cable ① and power cord ② in order, then tighten the screw of the signal cable.

- Ⓐ Connect D-SUB Cable
- Ⓑ Connect DVI-D Cable

NOTE

- This is a simplified representation of the rear view.
- This rear view represents a general model; your display may differ from the view as shown.
- User must use shielded signal interface cables (D-sub 15 pin cable, DVI cable) with ferrite cores to maintain standard compliance for the product.



3. Press  button on the front switch panel to turn the power on. When monitor power is turned on, the 'Self Image Setting Function' is executed automatically. (Only Analog Mode)

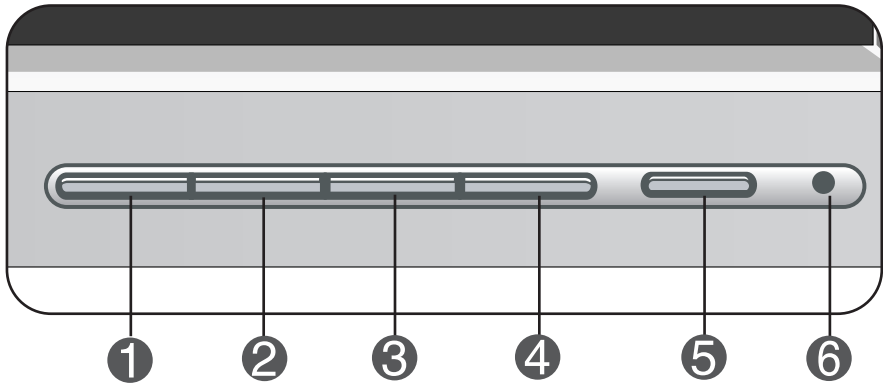
PROCESSING SELF
IMAGE SETTING

NOTE

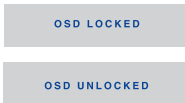
'Self Image Setting Function'? This function provides the user with optimal display settings. When the user connects the monitor for the first time, this function automatically adjusts the display to optimal settings for individual input signals.

'AUTO' Function? When you encounter problems such as blurry screen, blurred letters, screen flicker or tilted screen while using the device or after changing screen resolution, select AUTO function to improve resolution. (Only Analog Mode)

Front Panel Controls



- 1 MENU Button** Use this button to enter or exit the On Screen Display.



OSD LOCKED/UNLOCKED

This function allows you to lock the current control settings, so that they cannot be inadvertently changed. Press and hold the **MENU button** for several seconds. The message "**OSD LOCKED**" should appear.

You can unlock the OSD controls at any time by pushing the **MENU button** for several seconds. The message "**OSD UNLOCKED**" should appear.

- 2 f·ENGINE Button** Use this button to enter **f·ENGINE** menu.

For more information, refer to page 19 to 20.

- 3 INPUT Button** Use this button to select source from input.

When two input signals at least are connected, you can select the input signal (D-SUB/DVI-D) you want. When only one signal is connected, it is automatically detected. The default setting is D-Sub.

4 EXIT Button Exit the OSD(ON Screen Display).

5 Power Button Use this button to turn the display on or off.

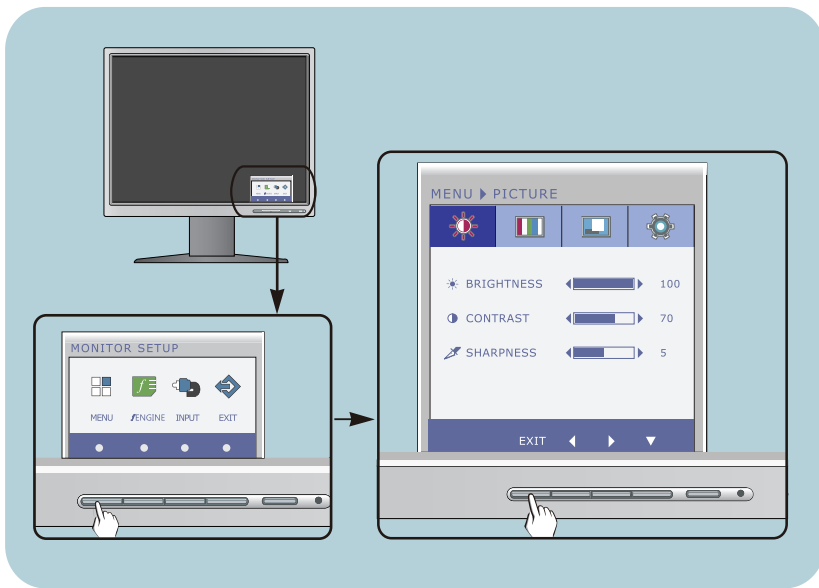
6 Power Indicator From front view, the power indicator stays blue if the display is running properly (On Mode). If the display is in Sleep Mode (Energy Saving), this indicator color changes to amber.

Screen Adjustment

Making adjustments to the image size, position and operating parameters of the display is quick and easy with the On Screen Display Control system.

A short example is given below to familiarize you with the use of the controls. The following section is an outline of the available adjustments and selections you can make using the OSD.

To make adjustments in the On Screen Display, follow these steps:



- 1 Press the discretionary button, then the main menu of the OSD appears.
- 2 To access a control, use the corresponding buttons.
- 3 Use the ◀/▶ buttons to adjust the image to the desired level.
Use the ▼ button to select other sub-menu items.
- 4 Press the **EXIT Button** to exit from the OSD.

On Screen Display(OSD) Selection and Adjustment

The following table indicates all the On Screen Display control, adjustment, and setting menus.

D-SUB : D-SUB(Analog signal) input

DVI-D : DVI-D(Digital signal) input

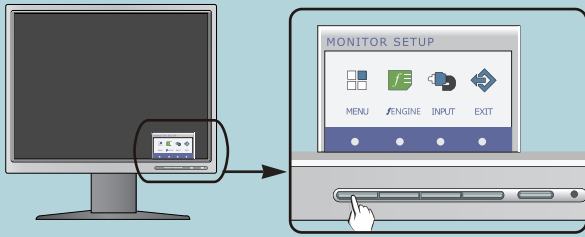
Main menu	Sub-menu	Supported input	Description
PICTURE	BRIGHTNESS CONTRAST SHARPNESS	D-SUB DVI-D	To adjust the brightness, contrast and sharpness of the screen
COLOR	COLOR TEMP (PRESET) (USER) WARM RED MEDIUM GREEN COOL BLUE	D-SUB DVI-D	To customize the color of the screen
	GAMMA DICOM GAMMA		
DISPLAY	HORIZONTAL VERTICAL	D-SUB	To adjust the position of the screen
	CLOCK PHASE AUTO	D-SUB	To improve the clarity and stability of the screen
OTHERS	LANGUAGE POWER INDICATOR	D-SUB DVI-D	To customize the screen status for a user's operating environment
	WHITE BALANCE	D-SUB	
	FACTORY RESET	D-SUB DVI-D	
f ENGINE	NORMAL MOVIE INTERNET	DSUB DVI-D	To select or customize desired image settings

NOTE

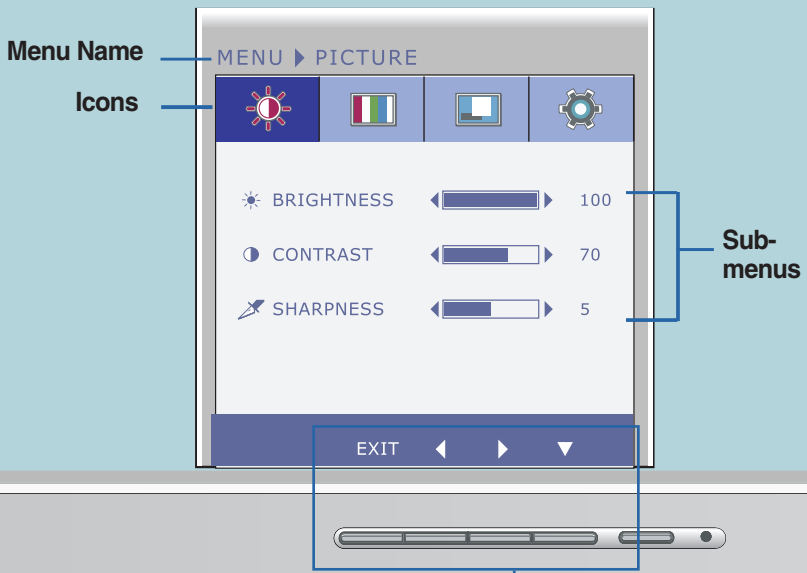
- The order of icons may differ depending on the model (13 to 20).

On Screen Display(OSD) Selection and Adjustment

You were introduced to the procedure of selecting and adjusting an item using the OSD system. Listed below are the icons, icon names, and icon descriptions of the all items shown on the Menu.



Press the **MENU** Button, then the main menu of the OSD appears.



- EXIT : Exit
- ◀▶ : Adjust (Decrease/Increase)
- ▼ : Select another sub-menu

Button Tip

NOTE

- OSD (On Screen Display) menu languages on the monitor may differ from the manual.

Main menu	Sub menu	Description
-----------	----------	-------------



PICTURE

D-SUB/DVI-D input



- | | |
|-------------------|---|
| BRIGHTNESS | To adjust the brightness of the screen. |
| CONTRAST | To adjust the contrast of the screen. |
| SHARPNESS | To adjust the clearness of the screen. |

- : Move to the upper menu
- : Decrease
- : Increase
- : Select another sub-menu

NOTE

- If you want to exit, select and press "EXIT".

Main menu	Sub menu	Description
-----------	----------	-------------



COLOR

PRESET Mode



COLOR TEMP Select either **PRESET** or **USER** to adjust the screen color.

PRESET

Select the screen color.

- **WARM** : Slightly reddish white.
- **MEDIUM** : Set the screen color to fit the sRGB standard color specification.
- **COOL** : Slightly bluish white.

USER Mode



USER

RED

Set your own red color levels.

GREEN

Set your own green color levels.

BLUE

Set your own blue color levels.

GAMMA

Set your own gamma value. :
GAMMA 0 / GAMMA 1 / GAMMA 2
 On the monitor, high gamma values display whitish images and low gamma values display blackish images.

DICOM GAMMA Use this function to set the **DICOM GAMMA**.
 When you select **DICOM GAMMA "ON"** the monitor gamma values are set for the medical characteristic and luminance keeps factory default value.

- : Move to the upper menu
- : Decrease
- : Increase
- : Select another sub-menu

NOTE

- If you want to exit, select and press "EXIT".

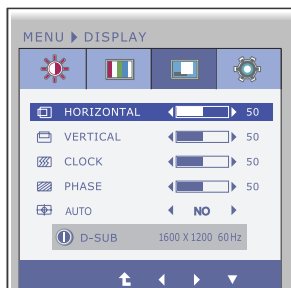
On Screen Display(OSD) Selection and Adjustment

Main menu	Sub menu	Description
-----------	----------	-------------



DISPLAY

D-SUB input

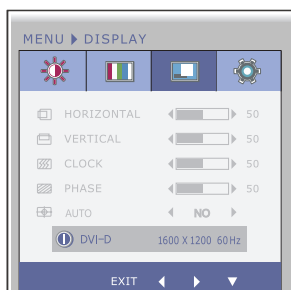


HORIZONTAL To move image left and right.

VERTICAL To move image up and down.

CLOCK To minimize any vertical bars or stripes visible on the screen background.
The horizontal screen size will also change.

DVI-D input



PHASE To adjust the focus of the display.
This item allows you to remove any horizontal noise and clear or sharpen the image of characters.

AUTO This will automatically adjust your display image to the ideal settings for the current screen resolution size (Only Analog Mode).

The best display mode is
1600 x 1200

- : Move to the upper menu
- : Decrease
- : Increase
- : Select another sub-menu

NOTE

- If you want to exit, select and press "EXIT".

Main menu	Sub menu	Description
-----------	----------	-------------



OTHERS

D-SUB input



LANGUAGE

To choose the language in which the control names are displayed.

POWER INDICATOR

Use this function to set the power indicator on the front side of the monitor to **ON** or **OFF**.

If you set **OFF**, it will be turned off. If you set **ON** at any time, the power indicator will automatically be turned on.

DVI-D input



WHITE BALANCE

If the output of the video card is different the required specifications, the color level may deteriorate due to video signal distortion. Using this function, the signal level is adjusted to fit into the standard output level of the video card in order to provide the optimal image.

Activate this function when white and black colors are present in the screen.

FACTORY RESET

Restore all factory default settings except "**LANGUAGE**."

Press the ◀, ▶ buttons to reset immediately.

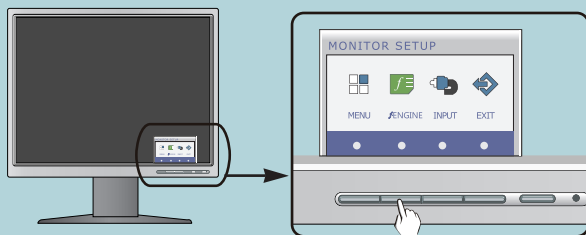
- ⬆ : Move to the upper menu
- ◀ : Decrease
- ▶ : Increase
- ⬇ : Select another sub-menu

NOTE

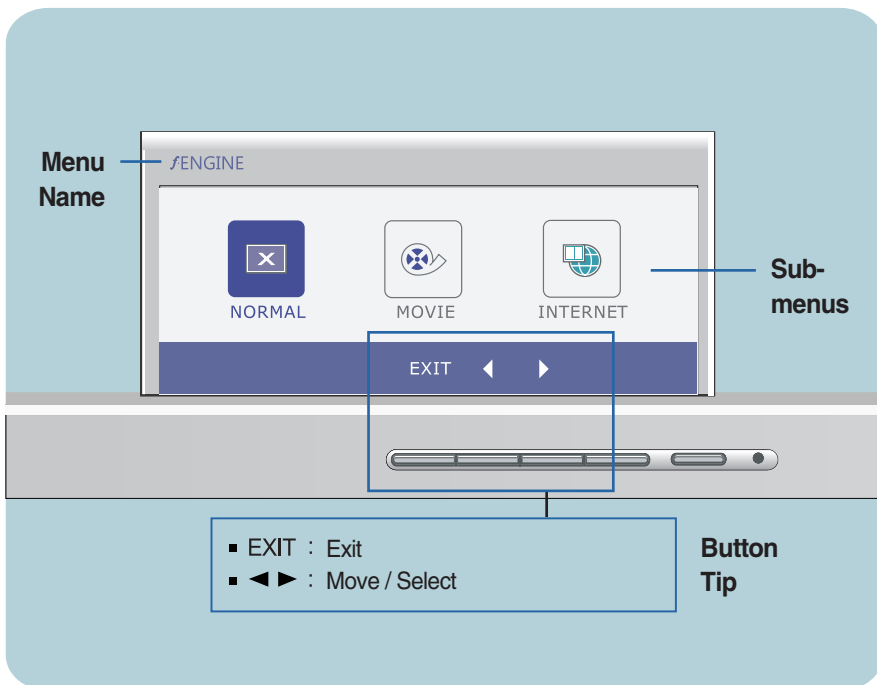
- If this does not improve the screen image, restore the factory default settings. If necessary, execute the **WHITE BALANCE** function again. This function will be enabled only when the input signal is an analog signal.
- If you want to exit, select ⬆ and press "**EXIT**".

On Screen Display(OSD) Selection and Adjustment

You were introduced to the procedure of selecting and adjusting an item using the OSD system. Listed below are the icons, icon names, and icon descriptions of the all items shown on the Menu.




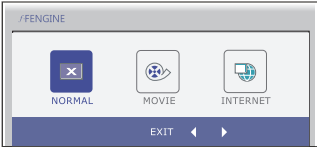
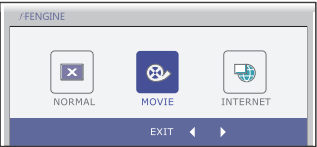
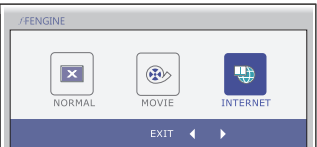
Press the *f-ENGINE* Button, then the main menu of the OSD appears.



NOTE

- OSD (On Screen Display) menu languages on the monitor may differ from the manual.

On Screen Display(OSD) Selection and Adjustment

Main menu	Sub menu	Description
		
D-SUB/DVI-D input		
	NORMAL	Select this when you want to use the product in the most general using environment.
	MOVIE	Select this when you are watching a video or movie.
	INTERNET	Select this when you are working on the document (Word etc.)

- **EXIT** : Exit
- **◀, ▶** : Move / Select

Check the following before calling for service.

No image appears	
● Is the power cord of the display connected?	• Check and see if the power cord is connected properly to the power outlet.
● Is the power indicator light on?	• Press the Power button.
● Is the power on and the power indicator blue or green?	• Adjust the brightness and the contrast.
● Is the power indicator amber?	• If the display is in power saving mode, try moving the mouse or pressing any key on the keyboard to bring up the screen. • Try to turn on the PC.
● Do you see an "OUT OF RANGE" message on the screen?	• This message appears when the signal from the PC (video card) is out of horizontal or vertical frequency range of the display. See the 'Specifications' section of this manual and configure your display again.
● Do you see a "CHECK SIGNAL CABLE" message on the screen?	• This message appears when the signal cable between your PC and your display is not connected. Check the signal cable and try again.

Do you see a "OSD LOCKED" message on the screen?	
● Do you see "OSD LOCKED" when you push MENU button?	• You can secure the current control settings, so that they cannot be inadvertently changed. You can unlock the OSD controls at any time by pushing the MENU button for several seconds: the message "OSD UNLOCKED" will appear.

Display image is incorrect

- | | |
|---|--|
| <ul style="list-style-type: none">● Display Position is incorrect. | <ul style="list-style-type: none">● Select AUTO function to adjust your display image to the ideal setting.
If the results are unsatisfactory, adjust the image position using the H position and V position icon in the on screen display. |
| <ul style="list-style-type: none">● On the screen background, vertical bars or stripes are visible. | <ul style="list-style-type: none">● Select AUTO function to adjust your display image to the ideal setting.
If the results are unsatisfactory, decrease the vertical bars or stripes using the CLOCK in the on screen display. |
| <ul style="list-style-type: none">● Any horizontal noise appearing in any image or characters are not clearly portrayed. | <ul style="list-style-type: none">● Select AUTO function to adjust your display image to the ideal setting.
If the results are unsatisfactory, decrease the horizontal bars using the PHASE in the on screen display.● Check Control Panel --> Display --> Settings and adjust the display to the recommended resolution or adjust the display image to the ideal setting. Set the color setting higher than 24 bits (true color). |

IMPORTANT

- Check **Control Panel --> Display --> Settings** and see if the frequency or the resolution were changed.
If yes, readjust the video card to the recommend resolution.
- If the recommended resolution (optimal resolution) is not selected, letters may be blurred and the screen may be dimmed, truncated or biased. Make sure to select the recommend resolution.
- The setting method can differ by computer and O/S (Operation System), and resolution mentioned above may not be supported by the video card performance. In this case, please ask to the computer or the video card manufacturer.

Display image is incorrect

- | | |
|--|---|
| <ul style="list-style-type: none">● The screen color is mono or abnormal. | <ul style="list-style-type: none">• Check if the signal cable is properly connected and use a screwdriver to fasten if necessary.• Make sure the video card is properly inserted in the slot.• Set the color setting higher than 24 bits (true color) at Control Panel - Settings. |
| <ul style="list-style-type: none">● The screen blinks. | <ul style="list-style-type: none">• Check if the screen is set to interlace mode and if yes, change it to the recommend resolution. |

Do you see an "Unrecognized monitor, Plug&Play (VESA DDC) monitor found" message?

- | | |
|---|---|
| <ul style="list-style-type: none">● Have you installed the display driver? | <ul style="list-style-type: none">• Be sure to install the display driver from the display driver CD (or diskette) that comes with your display. Or, you can also download the driver from our web site: http://www.lg.com.• Make sure to check if the video card supports Plug&Play function. |
|---|---|

Specifications

Display	51.054 cm (20.1 inch) Flat Panel Active matrix-TFT LCD Anti-Glare coating Visible diagonal size : 51.054 cm 0.255 mm x 0.255 mm (Pixel Pitch)										
Sync Input	Horizontal Freq. Vertical Freq. Input Form	28 kHz to 83 kHz (Automatic) 56 Hz to 60 Hz (Automatic) Separate Sync SOG (Sync On Green) , Digital									
Video Input	Signal Input Input Form	D-SUB Connector (Analogl) DVI-D Connector (Digital) RGB Analog (0.7 V p-p), Digital									
Resolution	Max Recommend	VESA 1600 x 1200 @ 60 Hz VESA 1600 x 1200 @ 60 Hz									
Plug&Play	DDC 2B										
Power Consumption	On Mode Sleep Mode Off Mode	: ≤ ≤ 58 W (Typ.) 1 W 1 W									
Dimensions & Weight	With Stand	Without Stand									
	Width Height Depth	Width Height Depth									
	<table border="1"> <tr> <td>Width</td> <td>44.40 cm (17.48 inch)</td> <td>44.40 cm (17.48 inch)</td> </tr> <tr> <td>Height</td> <td>43.45 cm (17.11 inch) (Min.) 53.45 cm (21.04 inch) (Max.)</td> <td>34.51 cm (13.59 inch)</td> </tr> <tr> <td>Depth</td> <td>27.01 cm (10.63 inch)</td> <td>7.06 cm (2.78 inch)</td> </tr> </table>		Width	44.40 cm (17.48 inch)	44.40 cm (17.48 inch)	Height	43.45 cm (17.11 inch) (Min.) 53.45 cm (21.04 inch) (Max.)	34.51 cm (13.59 inch)	Depth	27.01 cm (10.63 inch)	7.06 cm (2.78 inch)
Width	44.40 cm (17.48 inch)	44.40 cm (17.48 inch)									
Height	43.45 cm (17.11 inch) (Min.) 53.45 cm (21.04 inch) (Max.)	34.51 cm (13.59 inch)									
Depth	27.01 cm (10.63 inch)	7.06 cm (2.78 inch)									
	Weight(excl. packing)	8.7 kg (19.1816 lb)									
Range	Tilt Swivel Height Rotate	-5° to 20° 350° 100 mm (3.94 inch) 90°clockwise									
Power Input	AC 100-240 V~ 50 / 60 Hz 1.2 A										
Environmental Conditions	Operating Conditions										
	Temperature Humidity	10 °C to 35 °C 10 % to 80 % non-Condensing									
	Storage Conditions										
	Temperature Humidity	-20 °C to 60 °C 5 % to 90 % non-Condensing									
Stand Base	Attached (<input type="checkbox"/>), Detached (<input type="checkbox"/>)										
Power cord	Wall-outlet type or PC-outlet type										
NOTE	<ul style="list-style-type: none"> Information in this document is subject to change without notice. 										

Preset Modes (Resolution)

	Display Modes (Resolution)	Horizontal Freq. (kHz)	Vertical Freq. (Hz)
1	640 x 480	31.47	59.94
2	640 x 480	37.50	75.00
3	720 x 400	31.46	70.08
4	800 x 600	37.88	60.32
5	1024 x 768	48.36	60.00
6	1280 x 1024	63.98	60.02
7	1600 x 1024	62.11	60.00
*8	1600 x 1200	75.00	60.00

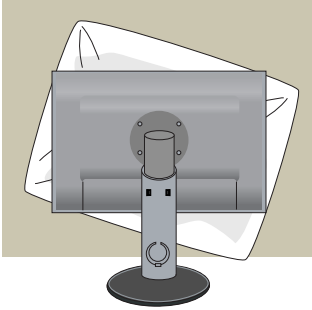
*Recommend Mode

Indicator

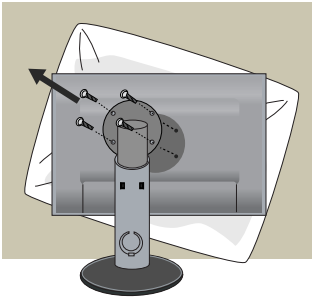
MODE	LED Color
On Mode	Blue
Sleep Mode	Amber
Off Mode	Off

Installing the Wall mount plate

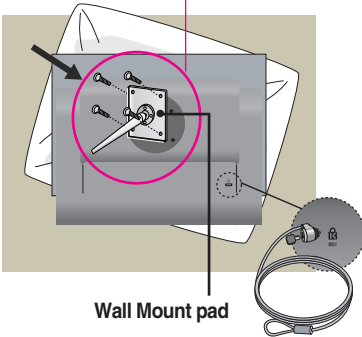
This monitor satisfies the specifications of the **Wall mount plate** or the **interchange device**.



1. After moving the product to face downward, make sure to place it on a soft cloth or a cushion to avoid surface damage.



2. Separate the head and the stand with the use of a screwdriver.



3. Install the Wall mount plate.

Wall mount plate (Separate purchase)

- Be sure to use screws and a wall mount that meet VESA standards.
- Using screws longer than those recommended might damage the product.
- Using screws that do not meet VESA standards might either damage the product or result in it coming away from the wall. We will not be held responsible for any damage resulting from failure to follow these instructions.

Kensington Security Slot

Connected to a locking cable that can be purchased separately at most computer stores.

< Screw Mounting Interface Dimension >

Hole spacing : 100 mm x 100 mm

NOTE

- VESA compatible only with respect to screw mounting interface dimensions and mounting screw specifications
- Please use VESA standard as below.
 - * 784.8 mm and under (30.9 inch)
 - Wall Mount Pad Thickness : 2.6 mm
 - Screw : ϕ 4.0 mm x Pitch 0.7 mm x Length 10 mm
 - * 787.4 mm and above (31.0 inch)
 - Please use VESA standard wall mount pad and screws.



Make sure to read the Safety Precautions before using the product.

Keep the OWNER'S MANUAL(CD) in an accessible place for future reference.

The model and serial number of the SET is located on the back and one side of the SET. Record it below should you ever need service.

MODEL _____

SERIAL _____