

L1810B

L1810B

18.1" FLATRON TFT LCD MONITOR

L1810B

L
L
L
L
L



- **Super Slim Bezel**
- **Maximum Resolution 1280 * 1024 @ 75Hz (Digital 60Hz)**
- **Dual Interface**
- **TCO '99 Low-Emission Compliant**
- **Built-in Power Brick**
- **Wall mountable**

L1810B
L1810B
L1810B
L1810B
L1810B



Digitally yours

L1810B

L1810B

18.1" FLATRON TFT LCD MONITOR

L1810B

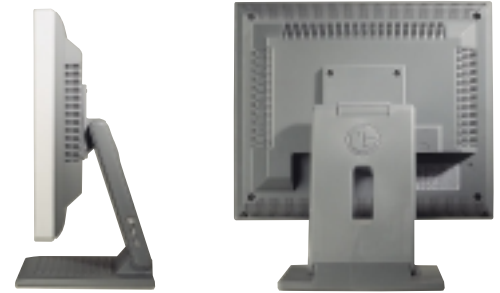
www.lg.ca



Image is everything. With the FLATRON L1810B TFT-LCD you get an 18.1" high contrast, 1280 x 1024 resolution, fine pixel pitch screen that gives you incredible clarity. All on a footprint that makes any desk look larger. So improve your image with FLATRON L1810B from LG.



Panel Type and Size	18.1" TFT Color LCD (18.1" VIS)
Display Area	14.1" x 11.3" (359 mm x 287 mm)
Maximum Resolution	1280 x 1024 @ 75Hz
Pixel Pitch	0.28 x 0.28 mm
Brightness	250 cd/m2 (Typical)
Contrast Ratio	350:1 (Typical)
Pixel Frequency	135MHz
Viewing Angle	H: 160, V: 160
Supported Colours	16.7M colours
Surface Treatment	Hard Coating 3H, Anti-Glare
Electronic Interface	LVDS
Backlighting	6 CCFL
Horizontal Frequency	30~80KHz
Vertical Frequency	56~85KHz
Video Signal Type	RGB Analog/Digital, Separate, Composite, SOG
Memory Modes	16 factory preset, 10 User Settable
Input Connector	15pin D-Sub, DVI-I
Power Supply	90 ~ 264Vac (50 ~ 60Hz), Built-in Power Brick
Dimensions (W x D x H)	Net: 406 x 223 x 431mm Gross: 460 x 277 x 520mm
Weight	Net: 7.8Kg, Gross: 10.5Kg
Wall/Arm Mount Type	Standard VESA Mounting
SECURITY PORT	Kensington Lock Port
Power Consumption:	Normal Operation Less than 53 watts Suspend/Standby Less than 3 watts Power Off Mode Less than 3 watts
VESA Plug and Play Level	DDC 2B, USB 2 Down 1Up
OSD Controls	Brightness, contrast, horizontal/vertical position, clock phase (+/-), color temp (9300K, 6500K, user), language, image size, OSD position, input select, information, auto configuration
Regulation Compliance	TCO-99, ISO 13406-2, ISO 9241-3,7,8 UL, CSA, TUV-GS, SEMCO, GOST CE, FCC-B, VCCI-2, C-TICK, EPA Energy Star
ACCESSORIES	Power Cord, Signal Cable, DVI Cable, USB Cable, Manual, Install Disk, Colorific® Software
Cabinet Colour	2 Tone (Silver Bezel, Charcoal/Black Base)
WARRANTY	3 Year Parts & Labour including Backlight
UPC#	719192165236



LG Electronics Canada Inc.

550 Matheson Blvd., Mississauga, Ontario L4Z 4G3 · 1-888-LGCANADA



Digitally yours

L1810B

L1810B

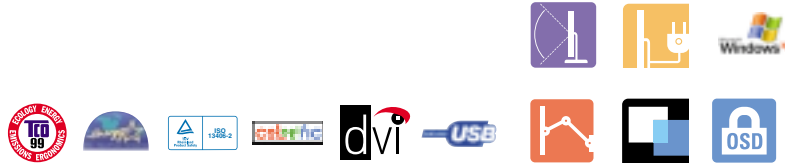
18.1" FLATRON TFT LCD MONITOR

L1810B

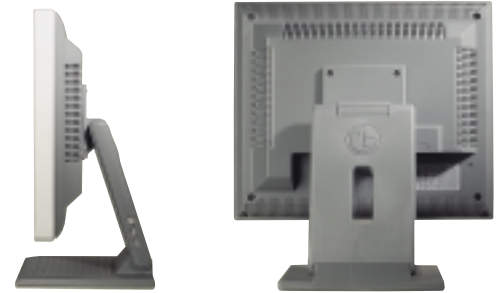
www.lg.ca



Image is everything. With the FLATRON L1810B TFT-LCD you get an 18.1" high contrast, 1280 x 1024 resolution, fine pixel pitch screen that gives you incredible clarity. All on a footprint that makes any desk look larger. So improve your image with FLATRON L1810B from LG.



Panel Type and Size	18.1" TFT Color LCD (18.1" VIS)
Display Area	14.1" x 11.3" (359 mm x 287 mm)
Maximum Resolution	1280 x 1024 @ 75Hz
Pixel Pitch	0.28 x 0.28 mm
Brightness	250 cd/m2 (Typical)
Contrast Ratio	350:1 (Typical)
Pixel Frequency	135MHz
Viewing Angle	H: 160, V: 160
Supported Colours	16.7M colours
Surface Treatment	Hard Coating 3H, Anti-Glare
Electronic Interface	LVDS
Backlighting	6 CCFL
Horizontal Frequency	30~80KHz
Vertical Frequency	56~85KHz
Video Signal Type	RGB Analog/Digital, Separate, Composite, SOG
Memory Modes	16 factory preset, 10 User Settable
Input Connector	15pin D-Sub, DVI-I
Power Supply	90 ~ 264Vac (50 ~ 60Hz), Built-in Power Brick
Dimensions (W x D x H)	Net: 405.9 x 430.6 x 222.4 mm Gross: 448 x 500 x 265 mm
Weight	Net: 7.8Kg, Gross: 10.5Kg
VESA MOUNTING COMPLIANCE	Standard VESA Mounting
SECURITY PORT	Kensington Lock Port
Power Consumption:	Normal Operation Less than 53 watts Suspend/Standby Less than 3 watts Power Off Mode Less than 3 watts
VESA Plug and Play Level	DDC 2B, USB 2 Down 1Up
OSD Controls	Brightness, contrast, horizontal/vertical position, clock phase (+/-), color temp (9300K, 6500K, user), language, image size, OSD position, input select, information, auto configuration
Regulation Compliance	TCO-99, ISO 13406-2, ISO 9241-3,7,8 UL, CSA, TUV-GS, SEMCO, GOST CE, FCC-B, VCCI-2, C-TICK, EPA Energy Star
ACCESSORIES	Power Cord, Signal Cable, DVI Cable, USB Cable, Manual, Install Disk, Colorific® Software
Cabinet Colour	2 Tone (Grey/Silver)
WARRANTY	3 Year Parts & Labour including Backlight
UPC#	719192165236



LG Electronics Canada Inc.
550 Matheson Blvd., Mississauga, Ontario L4Z 4G3 · 1-888-LGCANADA

©2002 LG Electronics Canada, Inc. All trademarks are property of their respective owners. Design and specifications subject to change without notice. 2/02



Digitally yours