



Pavilion IPS LED Backlit Monitors

User Guide

© 2012, Hewlett-Packard Development Company, L.P.

Microsoft, Windows, and Windows Vista are either trademarks or registered trademarks of Microsoft Corporation in the United States and/or other countries.

The only warranties for HP products and services are set forth in the express warranty statements accompanying such products and services. Nothing herein should be construed as constituting an additional warranty. HP shall not be liable for technical or editorial errors or omissions contained herein.


This document contains proprietary information that is protected by copyright. No part of this document may be photocopied, reproduced, or translated to another language without the prior written consent of Hewlett-Packard Company.


First Edition (October 2012)

Document Part Number: 701319-001

About This Guide

This guide provides information on monitor features, setting up the monitor, using the software and technical specifications.

 **WARNING!** Text set off in this manner indicates that failure to follow directions could result in bodily harm or loss of life.

 **CAUTION:** Text set off in this manner indicates that failure to follow directions could result in damage to equipment or loss of information.

 **NOTE:** Text set off in this manner provides important supplemental information.

Table of contents

| | |
|--|-----------|
| 1 Product Features | 1 |
| HP Pavilion IPS Monitors | 1 |
| 2 Setting Up the Monitor | 3 |
| Attaching the Monitor Base | 3 |
| Rear Components | 5 |
| Connecting the Cables | 6 |
| Front Panel Controls | 9 |
| Adjusting the Monitor | 10 |
| Turning on the Monitor | 10 |
| HP Watermark and Image Retention Policy | 11 |
| Locating the Rating Label | 11 |
| Installing a Cable Lock | 12 |
| 3 Using My Display Software | 13 |
| Installing the Software | 13 |
| Using the Software | 13 |
| 4 Finding More Information | 14 |
| Reference Guides | 14 |
| Product Support | 14 |
| Appendix A Technical Specifications | 15 |
| 20xi/20bw/20fi Models | 15 |
| 22xi/22bw/22fi Models | 16 |
| 23xi/23bw/23fi Models | 17 |
| 25xi/25bw Models | 18 |
| 27xi/27bw Models | 20 |
| Recognizing Preset Display Resolutions | 21 |
| 20" Models | 21 |
| 22", 23", 25", 27" Models | 21 |
| Power Adapters | 22 |
| Entering User Modes | 22 |
| Energy Saver Feature | 23 |

1 Product Features

HP Pavilion IPS Monitors

The LCD (liquid crystal display) monitors have an active matrix, In-Plane Switching (IPS) panel. The monitor models and features include:

- 20xi/20bw/20fi models, 50.8 cm (20-inch) diagonal viewable area display with 1600 x 900 resolution, plus full-screen support for lower resolutions; includes custom scaling for maximum image size while preserving original aspect ratio
- 22xi/22bw/20fi models, 54.6 cm (21.5-inch) diagonal viewable area display with 1920 x 1080 resolution, plus full-screen support for lower resolutions; includes custom scaling for maximum image size while preserving original aspect ratio
- 23xi/23bw/23fi models, 58.4 cm (23-inch) diagonal viewable area display with 1920 x 1080 resolution, plus full-screen support for lower resolutions; includes custom scaling for maximum image size while preserving original aspect ratio
- 25xi/25bw model, 63.5 cm (25-inch) diagonal viewable area display with 1920 x 1080 resolution, plus full-screen support for lower resolutions; includes custom scaling for maximum image size while preserving original aspect ratio
- 27xi/27bw model, 68.6cm (27-inch) diagonal viewable area display with 1920 x 1080 resolution, plus full-screen support for lower resolutions; includes custom scaling for maximum image size while preserving original aspect ratio
- LED backlight that consumes less energy than traditional CCFL backlights
- Tilt capability and wide viewing angle to allow viewing from a sitting or standing position, or moving side-to-side
- Video signal input to support VGA analog
- Video signal input to support DVI digital
- Video signal input to support high-definition multimedia interface (HDMI)
- Plug and play capability if supported by your operating system
- Security slot provision on rear of monitor for optional cable lock
- On-Screen Display (OSD) adjustments in several languages for easy setup and screen optimization
- My Display for adjusting monitor settings
- High-bandwidth digital content protection (HDCP) on DVI and HDMI (for select models with HDMI) inputs
- Software and documentation CD that includes monitor drivers and product documentation

- Energy saver feature to meet requirements for reduced power consumption
- Safety guidelines, certifications, and regulatory notices for these products are available in the *HP LCD Monitors Reference Guide* on the CD included with this monitor.

2 Setting Up the Monitor

To set up the monitor, ensure that the power is turned off to the monitor, computer system, and other attached devices, then follow the instructions below.

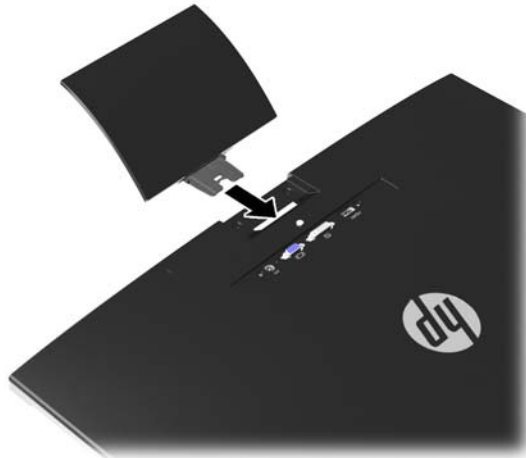
Attaching the Monitor Base

⚠ CAUTION: The screen is fragile. Avoid touching or applying pressure to the screen; doing so can cause damage.

💡 TIP: For monitor displays with glossy bezels, consider the placement of the display, because the bezel might cause interfering reflections from surrounding light and bright surfaces.

1. Lift the monitor from its box and place it face down on a flat surface.
2. Insert the stand into the slot on the back of the display head until it clicks.

Figure 2-1 Inserting the stand



3. Attach the base to the stand.


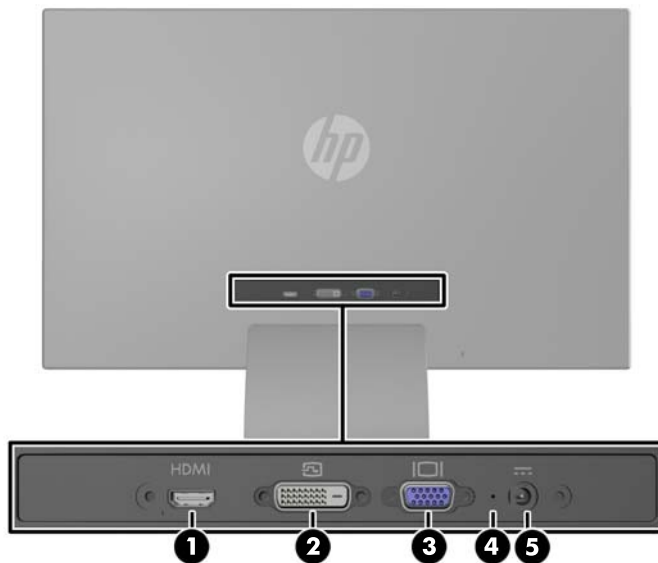
 **NOTE:** For the 25" and 27" models, tighten the screw on the bottom of the base by hand. For all other models, attach the base to the stand and the plastic hook will automatically lock.

Figure 2-2 Attaching the base



Rear Components

Figure 2-3 Rear Components




| Component | Function |
|----------------------|---|
| 1 HDMI* | Connects the HDMI cable from the computer to the monitor. |
| 2 DVI-D | Connects the DVI-D cable from the computer to the monitor. |
| 3 VGA | Connects the VGA cable from the computer to the monitor. |
| 4 DC Power LED | Illuminates when power adapter is connected to the monitor. |
| 5 DC Power Connector | Connects the DC power adapter to the monitor. |

* select models

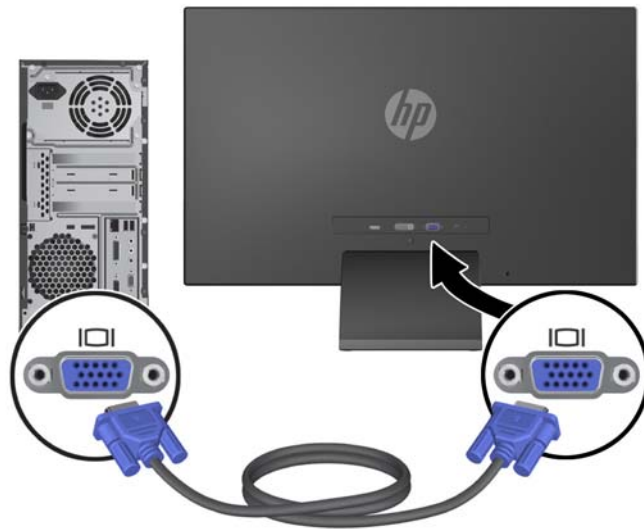
Connecting the Cables

1. Place the monitor in a convenient, well-ventilated location near the computer.
2. Connect a signal cable.

 **NOTE:** The monitor is capable of supporting analog, digital, or HDMI input. The video mode is determined by the video cable used. The monitor will automatically determine which inputs have valid video signals. The inputs can be selected by pressing the **+ / source** button on the front panel or through the On-Screen Display (OSD) feature by pressing the **Menu** button.

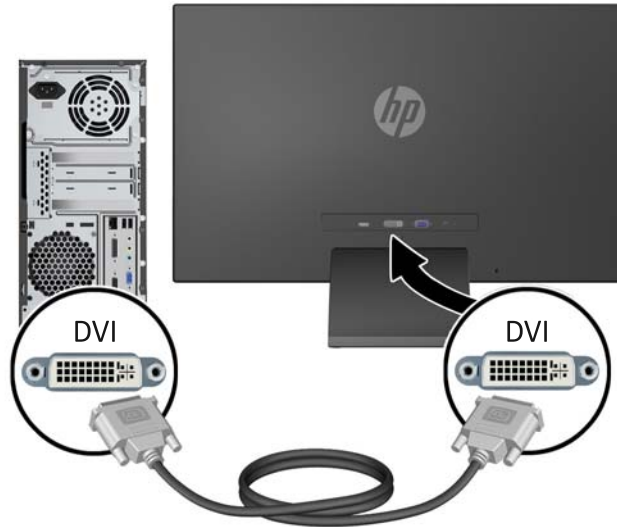
- For analog operation, use a VGA signal cable. Connect the VGA signal cable to the VGA connector on the rear of the monitor and the other end to the VGA connector on the computer.

Figure 2-4 Connecting a VGA Signal Cable (provided with select models)



- For DVI digital operation, use a DVI-D signal cable. Connect the DVI-D signal cable to the DVI connector on the rear of the monitor and the other end to the DVI connector on the computer.

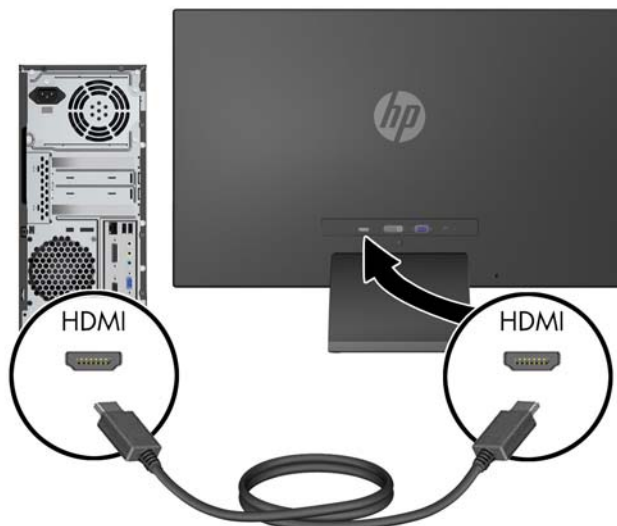
Figure 2-5 Connecting a DVI Signal Cable (provided with select models)



OR

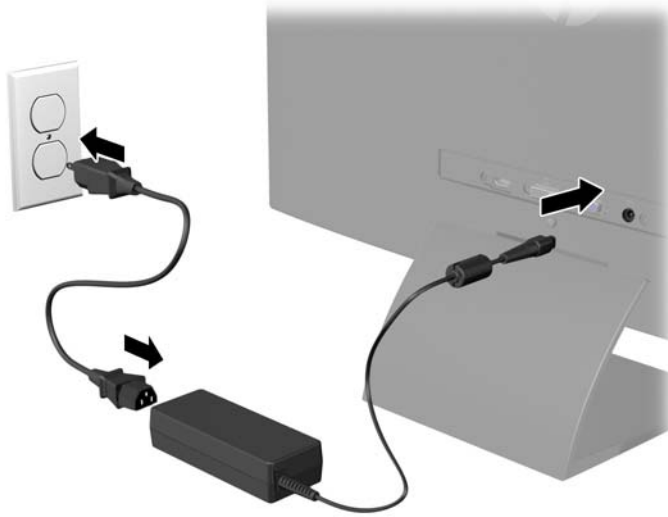
- Connect one end of the HDMI cable to the HDMI connector on the back of the monitor (select models) and the other end of the HDMI cable to the input device. The HDMI cable is not included. Connect the HDMI signal cable to the HDMI connector on the rear of the monitor and the other end to the HDMI connector on the computer.

Figure 2-6 Connecting the HDMI Cable (cable not included)



3. Connect the round end of the power supply cord to the monitor, and then connect one end of the power cord to the power supply and the other end to a grounded electrical outlet.

Figure 2-7 Connecting the Power Cable



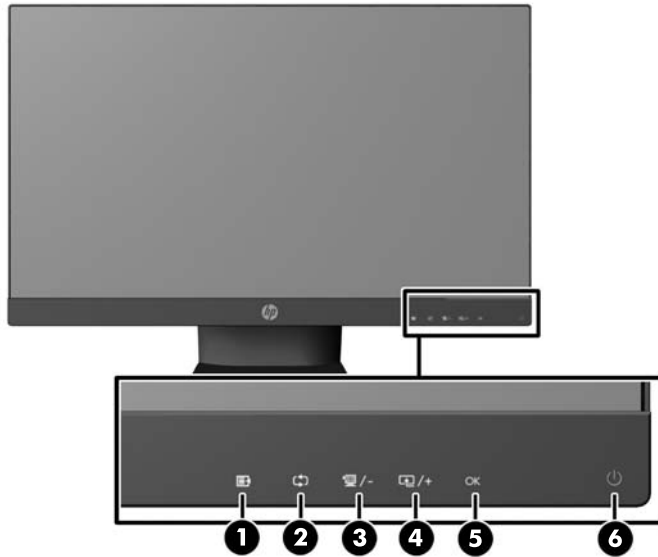
⚠ WARNING! To reduce the risk of electric shock or damage to the equipment:

Do not disable the power cord grounding plug. The grounding plug is an important safety feature. Plug the power cord into a grounded (earthed) electrical outlet that is easily accessible at all times. Disconnect power from the equipment by unplugging the power cord from the electrical outlet.

For your safety, do not place anything on power cords or cables. Arrange them so that no one may accidentally step on or trip over them. Do not pull on a cord or cable. When unplugging from the electrical outlet, grasp the cord by the plug.





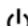
Front Panel Controls

Figure 2-8 Monitor Front Panel Controls



NOTE: The front panel controls on the HP 25xi/25bw and HP 27xi/27bw models are inactive unless they are illuminated. To activate the controls, tap on the area where the icons are located. All icons will become illuminated and active. The backlight for the icons will turn off upon exit from the OSD or when the OSD times out.

Table 2-1 Monitor Front Panel Controls

| Control | Function |
|--|--|
| 1  Menu | Opens, selects or exits the OSD menu. |
| 2  Auto adjustment | Press and hold to automatically adjust the screen image. NOTE: This item can only be used with a VGA input signal. |
| 3  Quick View/Minus | If the OSD menu is on, press to navigate backward through the OSD menu and decrease adjustment levels. If the OSD menu is inactive, press to activate the Quick View button that chooses different settings (HP Enhance+, Movie, Photo, Gaming, Text, Custom) |
| 4  Plus/source | If the OSD menu is on, press to navigate forward through the OSD menu and increase adjustment levels. If the OSD menu is inactive, press to activate the source button that chooses the video signal input (VGA, DVI, or HDMI) |
| 5 OK OK | If the OSD menu is on, press to select the highlighted menu item. |
| 6  Power | Turns the monitor on or off. |



NOTE: To view an OSD menu simulator, visit the HP Customer Self Repair Services Media Library at <http://www.hp.com/go/sml>.

Adjusting the Monitor

Tilt the monitor panel forward or backward to set it to a comfortable eye level.

Figure 2-9 Tilting the Monitor



Turning on the Monitor

1. Press the power button on the front of the monitor to turn it on.
2. Press the power button on the computer to turn it on.



CAUTION: Burn-in image damage may occur on monitors that display the same static image on screen for a prolonged period of time.* To avoid burn-in image damage on the monitor screen, you should always activate a screen saver application or turn off the monitor when it is not in use for a prolonged period of time. Image retention is a condition that may occur on all LCD screens. Monitors with a “burned-in image” are not covered under the HP warranty.

* A prolonged period of time is 12 consecutive hours of non-use.



NOTE: If pressing the power button has no effect, the Power Button Lockout feature may be enabled. To disable this feature, press and hold the monitor power button for 10 seconds.



NOTE: You can disable the power LED in the OSD menu. Press the **Menu** button on the front of the monitor, then select **Management > Bezel Power LED > Off**.

When the monitor is powered on, a Monitor Status message is displayed for five seconds. The message shows which input (VGA, DVI, or HDMI) is the current active signal, the status of the auto-switch source setting (On or Off; factory default is On), the default source signal (factory default is Auto-switch), the current preset display resolution, and the recommended preset display resolution.

The monitor automatically scans the signal inputs for an active input and uses that input for the display. If two or more inputs are active, the monitor will display the default input source. If the default source is not one of the active inputs, then the monitor will display the highest ranking priority input in the following order: DVI, HDMI, then VGA. You can change the default source in the OSD by pressing the front panel [Menu](#) button and selecting **Source Control > Default Source**.

HP Watermark and Image Retention Policy

The IPS monitor models are designed with IPS (In-Plane Switching) display technology which provides ultra-wide viewing angles and advanced image quality. IPS monitors are suitable for a wide variety of advanced image quality applications. This panel technology, however, is not suitable for applications that exhibit static, stationary or fixed images for long periods of time without the use of screen savers. These types of applications may include camera surveillance, video games, marketing logos, and templates that are displayed on the screen for a prolonged period of time. Static images may cause image retention damage that could look like stains or watermarks on the monitor's screen.

Monitors in use for 24 hours per day that result in image retention damage are not covered under the HP warranty. To avoid image retention damage, always turn off the monitor when it is not in use or use the power management setting, if supported on your system, to turn off the display when the system is idle.

Locating the Rating Label

The rating label on the monitor provides the product number and serial number. You may need these numbers when contacting HP about the monitor model. The rating label is located on the bottom of the monitor.

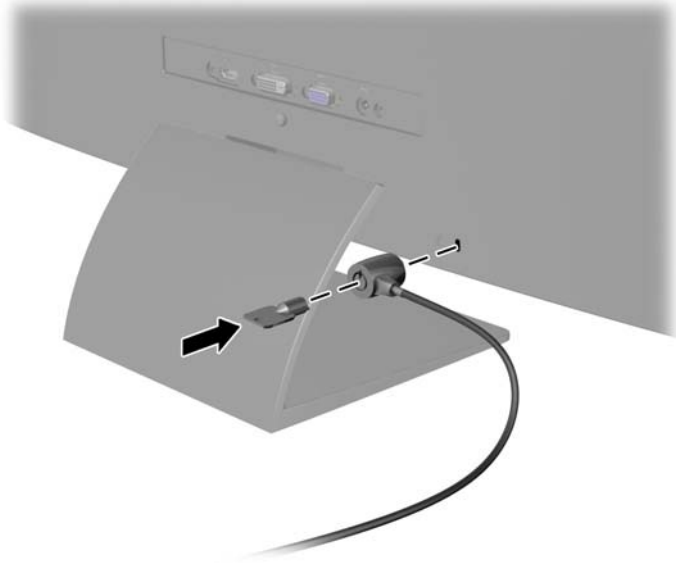
Figure 2-10 Locating the Rating Label



Installing a Cable Lock

You can secure the monitor to a fixed object with an optional cable lock available from HP.

Figure 2-11 Installing a Cable Lock



3 Using My Display Software

The CD provided with the monitor includes My Display software. Use My Display software to choose preferences for optimum viewing. You can select settings for gaming, movies, photo editing or just working on documents and spreadsheets. My Display also provides an easy way to adjust settings such as brightness, color, and contrast.

Installing the Software

To install the software:

1. Insert the CD in your computer CD drive. The CD menu displays.
2. Select the language.
3. Click **Install My Display Software**.
4. Follow the onscreen instructions.
5. Restart the computer.

Using the Software

To open the My Display software:

1. Click the **HP My Display** icon on the taskbar.

Or

Click the **Windows Start button**™ on the taskbar.

2. Click **All Programs**.
3. Click **HP My Display**.
4. Select **HP My Display**.

For additional information, refer to the onscreen **Help** within the software.

4 Finding More Information


Reference Guides

Refer to the *HP LCD Monitors Reference Guide* included on the CD with your monitor for additional information on:

- Optimizing monitor performance
- Safety and maintenance guidelines
- Installing software from the CD
- Using the OSD menu
- Downloading software from the Web
- Agency regulatory information
- Troubleshooting and recommended solutions to common problems

Product Support


For additional information on using and adjusting your monitor, go to <http://www.hp.com/support>. Select your country or region, select **Product Support & Troubleshooting**, and then enter your monitor model in the SEARCH window.

 **NOTE:** The monitor user guide, reference guide, and drivers are available at <http://www.hp.com/support>.

If the information provided in the guide or in the *HP LCD Monitors Reference Guide* do not address your questions, you can contact support. For U.S. support, go to <http://www.hp.com/go/contactHP>. For worldwide support, go to http://welcome.hp.com/country/us/en/wwcontact_us.html.


Here you can:

- Chat online with an HP technician

 **NOTE:** When support chat is not available in a particular language, it is available in English.

- E-mail support
- Find support telephone numbers
- Locate an HP service center

A Technical Specifications

 **NOTE:** All specifications represent the typical specifications provided by HP's component manufacturers; actual performance may vary either higher or lower.

20xi/20bw/20fi Models

Table A-1 20xi/20bw/20fi Models Specifications

| | | |
|--|---|-----------------------|
| Display | 50.8 cm wide screen | 20 inches wide screen |
| Type | IPS | |
| Viewable Image Size | 50.8 cm diagonal | 20-inch diagonal |
| Tilt | -5 to 25° | |
| Maximum Weight (Unpacked) | 2.8 kg | 6.2 lbs |
| Dimensions (include base) | | |
| Height | 36.6 cm | 14.5 inches |
| Depth | 17.1 cm | 6.73 inches |
| Width | 46.6 cm | 18.4 inches |
| Maximum Graphic Resolution | 1600 x 900 (60 Hz) analog input 1600 x 900 (60 Hz) digital input | |
| Optimum Graphic Resolution | 1600 x 900 (60 Hz) analog input 1600 x 900 (60 Hz) digital input | |
| Text Mode | 720 x 400 | |
| Dot Pitch | 0.277 (H) x 0.277 (V) mm | |
| Pixels Per Inch | 92 PPI | |
| Horizontal Frequency | 24 to 83 kHz | |
| Vertical Refresh Rate | 50 to 76 Hz | |
| Environmental Requirements Temperature | | |
| Operating Temperature | 5 to 35° C | 41 to 95° F |
| Storage Temperature | -20 to 60° C | -4 to 140° F |
| Relative Humidity | 20 to 70% | |
| Power Source | 100 – 240 VAC 50/60 Hz | |

Table A-1 20xi/20bw/20fi Models Specifications (continued)

| | | |
|-----------------------------|--|------------------|
| Altitude: | | |
| Operating | 0 to 5000 m | 0 to 16,400 feet |
| Storage | 0 to 12192 m | 0 to 40,000 feet |
| Measured Power Consumption: | | |
| Full Power | 22 watts | |
| Typical Settings | 20 watts | |
| Energy Star® Test Methods | 16.7 watts (115 VAC), 16.6 (230 VAC), 16.8 (100 VAC) watts | |
| Sleep | <0.5 watts | |
| Switch Off | <0.5 watts | |
| Input Terminal | One VGA connector; one DVI connector | |

22xi/22bw/22fi Models

Table A-2 22xi/22bw/22fi Models Specifications

| | | |
|----------------------------|---|-------------------------|
| Display | 54.6 cm wide screen | 21.5 inches wide screen |
| Type | IPS | |
| Viewable Image Size | 54.6 cm diagonal | 21.5-inch diagonal |
| Tilt | -5 to 25° | |
| Maximum Weight (Unpacked) | 3.0 kg | 6.61 lbs |
| Dimensions (include base) | | |
| Height | 38.5 cm | 15.2 inches |
| Depth | 17.1 cm | 6.73 inches |
| Width | 49.9 cm | 19.7 inches |
| Maximum Graphic Resolution | 1920 x 1080 (60 Hz) analog input 1920 x 1080 (60 Hz) digital input | |
| Optimum Graphic Resolution | 1920 x 1080 (60 Hz) analog input 1600 x 900 (60 Hz) digital input | |
| Text Mode | 720 x 400 | |
| Dot Pitch | 0.2480 (H) x 0.2480 (V) mm | |
| Pixels Per Inch | 102 PPI | |
| Horizontal Frequency | 24 to 94 kHz | |
| Vertical Refresh Rate | 50 to 76 Hz | |

Table A-2 22xi/22bw/22fi Models Specifications (continued)

| | | |
|--|---|------------------|
| Environmental Requirements Temperature | | |
| Operating Temperature | 5 to 35° C | 41 to 95° F |
| Storage Temperature | -20 to 60° C | -4 to 140° F |
| Relative Humidity | | |
| | 20 to 70% | |
| Power Source | | |
| | 100 – 240 VAC 50/60 Hz | |
| Altitude: | | |
| Operating | 0 to 5000 m | 0 to 16,400 feet |
| Storage | 0 to 12192 m | 0 to 40,000 feet |
| Measured Power Consumption: | | |
| Full Power | 28 watts | |
| Typical Settings | 26 watts | |
| Energy Star® Test Methods | 19.2 (115 VAC), 19.2 (230 VAC), 19.4 (100 VAC) watts | |
| Sleep | <0.5 watts | |
| Switch Off | <0.5 watts | |
| Input Terminal | | |
| | One VGA connector; one DVI connector; one HDMI connector | |

23xi/23bw/23fi Models

Table A-3 23xi/23bw/23fi Model Specifications

| | | |
|----------------------------|-----------------------------------|-----------------------|
| Display | 58.4 cm wide screen | 23 inches wide screen |
| Type | IPS | |
| Viewable Image Size | 58.4 cm diagonal | 23-inch diagonal |
| Tilt | -5 to 25° | |
| Maximum Weight (Unpacked) | 3.5 kg | 7.72 lbs |
| Dimensions (include base) | | |
| Height | 40.4 cm | 15.95 inches |
| Depth | 17.1 cm | 6.73 inches |
| Width | 53.23 cm | 20.96 inches |
| Maximum Graphic Resolution | | |
| | 1920 x 1080 (60 Hz) analog input | |
| | 1920 x 1080 (60 Hz) digital input | |
| Optimum Graphic Resolution | | |
| | 1920 x 1080 (60 Hz) analog input | |
| | 1920 x 1080 (60 Hz) digital input | |

Table A-3 23xi/23bw/23fi Model Specifications (continued)

| | | |
|--|---|------------------|
| Text Mode | 720 x 400 | |
| Dot Pitch | 0.265 (H) x 0.265 (V) mm | |
| Pixels Per Inch | 96 PPI | |
| Horizontal Frequency | 24 to 94 kHz | |
| Vertical Refresh Rate | 50 to 76 Hz | |
| Environmental Requirements Temperature | | |
| Operating Temperature | 5 to 35° C | 41 to 95° F |
| Storage Temperature | -20 to 60° C | -4 to 140° F |
| Relative Humidity | 20 to 70% | |
| Power Source | 100 – 240 VAC 50/60 Hz | |
| Altitude: | | |
| Operating | 0 to 5000 m | 0 to 16,400 feet |
| Storage | 0 to 12192 m | 0 to 40,000 feet |
| Measured Power Consumption: | | |
| Full Power | 30 watts | |
| Typical Settings | 28 watts | |
| Energy Star® Test Methods | 21.0 (115 VAC), 20.8 (230 VAC), 21.1 (100 VAC) watts | |
| Sleep | <0.5 watts | |
| Switch Off | <0.5 watts | |
| Input Terminal | One VGA connector; one DVI connector; one HDMI connector | |

25xi/25bw Models

Table A-4 25xi/25bw Models Specifications

| | | |
|---------------------------|---------------------|-----------------------|
| Display | 63.5 cm wide screen | 25 inches wide screen |
| Type | IPS | |
| Viewable Image Size | 63.5 cm diagonal | 25-inch diagonal |
| Tilt | -5 to 25° | |
| Maximum Weight (Unpacked) | 4.41 kg | 9.71 lbs |

Table A-4 25xi/25bw Models Specifications (continued)

| | | |
|--|---|------------------|
| Dimensions (include base) | | |
| Height | 42.94 cm | 16.91 inches |
| Depth | 19.23 cm | 7.57 inches |
| Width | 57.77 cm | 22.74 inches |
| Maximum Graphic Resolution | | |
| | 1920 x 1080 (60 Hz) analog input | |
| | 1920 x 1080 (60 Hz) digital input | |
| Optimum Graphic Resolution | | |
| | 1920 x 1080 (60 Hz) analog input | |
| | 1920 x 1080 (60 Hz) digital input | |
| Text Mode | 720 x 400 | |
| Dot Pitch | 0.288 (H) x 0.288 (V) mm | |
| Pixels Per Inch | 88 PPI | |
| Horizontal Frequency | 24 to 94 kHz | |
| Vertical Refresh Rate | 50 to 76 Hz | |
| Environmental Requirements Temperature | | |
| Operating Temperature | 5 to 35° C | 41 to 95° F |
| Storage Temperature | -20 to 60° C | -4 to 140° F |
| Relative Humidity | 20 to 70% | |
| Power Source | 100 – 240 VAC 50/60 Hz | |
| Altitude: | | |
| Operating | 0 to 5000 m | 0 to 16,400 feet |
| Storage | 0 to 12192 m | 0 to 40,000 feet |
| Measured Power Consumption: | | |
| Full Power | 30 watts | |
| Typical Settings | 28 watts | |
| Energy Star® Test Methods | 26.1 (115 VAC), 26 (230 VAC), 26.1 (100 VAC) watts | |
| Sleep | <0.5 watts | |
| Switch Off | <0.5 watts | |
| Input Terminal | One VGA connector; one DVI connector; one HDMI connector | |

27xi/27bw Models

Table A-5 27xi/27bw Models Specifications

| | | |
|--|---|-----------------------|
| Display | 68.6 cm wide screen | 27 inches wide screen |
| Type | IPS | |
| Viewable Image Size | 68.6 cm diagonal | 27-inch diagonal |
| Tilt | -5 to 25° | |
| Maximum Weight (Unpacked) | 5.3 kg | 11.68 lbs |
| Dimensions (include base) | | |
| Height | 45.46 cm | 17.9 inches |
| Depth | 19.24 cm | 7.58 inches |
| Width | 62.26 cm | 24.51 inches |
| Maximum Graphic Resolution | 1920 x 1080 (60 Hz) analog input 1920 x 1080 (60 Hz) digital input | |
| Optimum Graphic Resolution | 1920 x 1080 (60 Hz) analog input 1920 x 1080 (60 Hz) digital input | |
| Text Mode | 720 x 400 | |
| Dot Pitch | 0.311 (H) x 0.311 (V) mm | |
| Pixels Per Inch | 82 PPI | |
| Horizontal Frequency | 24 to 94 kHz | |
| Vertical Refresh Rate | 50 to 76 Hz | |
| Environmental Requirements Temperature | | |
| Operating Temperature | 5 to 35° C | 41 to 95° F |
| Storage Temperature | -20 to 60° C | -4 to 140° F |
| Relative Humidity | 20 to 70% | |
| Power Source | 100 – 240 VAC 50/60 Hz | |
| Altitude: | | |
| Operating | 0 to 5000 m | 0 to 16,400 feet |
| Storage | 0 to 12192 m | 0 to 40,000 feet |

Table A-5 27xi/27bw Models Specifications (continued)

| | |
|-----------------------------|---|
| Measured Power Consumption: | |
| Full Power | 35 watts |
| Typical Settings | 32 watts |
| Energy Star® Test Methods | 24.4 (115 VAC), 24.2 (230 VAC), 24.5 (100 VAC) watts |
| Sleep | <0.5 watts |
| Switch Off | <0.5 watts |
| Input Terminal | One VGA connector; one DVI connector; one HDMI connector |

Recognizing Preset Display Resolutions

The display resolutions listed below are the most commonly used modes and are set as factory defaults. This monitor automatically recognizes these preset modes and they will appear properly sized and centered on the screen.

20" Models

Table A-6 Factory Preset Modes

| Preset | Pixel Format | Horz Freq (kHz) | Vert Freq (Hz) |
|--------|--------------|-----------------|----------------|
| 1 | 640 × 480 | 31.469 | 59.94 |
| 2 | 720 × 400 | 31.469 | 70.087 |
| 3 | 800 × 600 | 37.879 | 60.317 |
| 4 | 1024 × 768 | 48.363 | 60.004 |
| 5 | 1280 × 720 | 45 | 60 |
| 6 | 1280 × 1024 | 63.981 | 60.02 |
| 7 | 1440 × 900 | 55.935 | 59.887 |
| 8 | 1600 × 900 | 60 | 60 |

22", 23", 25", 27" Models

Table A-7 Factory Preset Modes

| Preset | Pixel Format | Horz Freq (kHz) | Vert Freq (Hz) |
|--------|--------------|-----------------|----------------|
| 1 | 640 × 480 | 31.469 | 59.94 |
| 2 | 720 × 400 | 31.469 | 70.087 |
| 3 | 800 × 600 | 37.879 | 60.317 |
| 4 | 1024 × 768 | 48.363 | 60.004 |

Table A-7 Factory Preset Modes (continued)

| | | | |
|----|-------------|--------|--------|
| 5 | 1280 × 720 | 45 | 60 |
| 6 | 1280 × 1024 | 63.981 | 60.02 |
| 7 | 1440 × 900 | 55.935 | 59.887 |
| 8 | 1600 × 900 | 60 | 60 |
| 9 | 1680 × 1050 | 65.29 | 59.954 |
| 10 | 1920 × 1080 | 67.5 | 60 |

Table A-8 High Definition Video Formats

| Preset | Timing Name | Pixel Format | Horz Freq (kHz) | Vert Freq (Hz) |
|--------|-------------|--------------|-----------------|----------------|
| 1 | 480p | 720 × 480 | 31.469 | 60 |
| 2 | 576p | 720 × 576 | 31.25 | 50 |
| 3 | 720p50 | 1280 × 720 | 37.5 | 50 |
| 4 | 720p60 | 1280 × 720 | 45 | 60 |
| 5 | 1920p60 | 1920 × 1080 | 67.5 | 60 |
| 6 | 1920p50 | 1920 × 1080 | 56.25 | 50 |

Power Adapters

Table A-9 Power Adapters/Models

| Manufacturer | Model Number | Power Supply Rating | Monitor Models |
|--------------|-----------------|---------------------|--|
| LiteOn | PA-1041-71TA-LF | 40W/12V | 20xi/20bw/20fi, 22xi/22bw/22fi, and 23xi/23bw/23fi |
| APD | DA-50F19-AAAF | 50W/19V | HP 25xi/bw and HP 27xi/bw |

Entering User Modes

The video controller signal may occasionally call for a mode that is not preset if:

- You are not using a standard graphics adapter.
- You are not using a preset mode.

If this occurs, you may need to readjust the parameters of the monitor screen by using the on-screen display. Your changes can be made to any or all of these modes and saved in memory. The monitor automatically stores the new setting, then recognizes the new mode just as it does a preset mode. In addition to the factory preset modes, there are at least 10 user modes that can be entered and stored.

Energy Saver Feature

The monitors support a reduced power state. The reduced power state will be entered into if the monitor detects the absence of either the horizontal sync signal and/or the vertical sync signal. Upon detecting the absence of these signals, the monitor screen is blanked, the backlight is turned off, and the power light is turned amber. When the monitor is in the reduced power state, the monitor will utilize 0.5 watts of power. There is a brief warm up period before the monitor will return to its normal operating mode.

Refer to the computer manual for instructions on setting energy saver features (sometimes called power management features).



NOTE: The above power saver feature only works when connected to computers that have energy saver features.

By selecting the settings in the monitor's Energy Saver utility, you can also program the monitor to enter into the reduced power state at a predetermined time. When the monitor's Energy Saver utility causes the monitor to enter the reduced power state, the power light blinks amber.