

# RC AREA LUMINAIRE

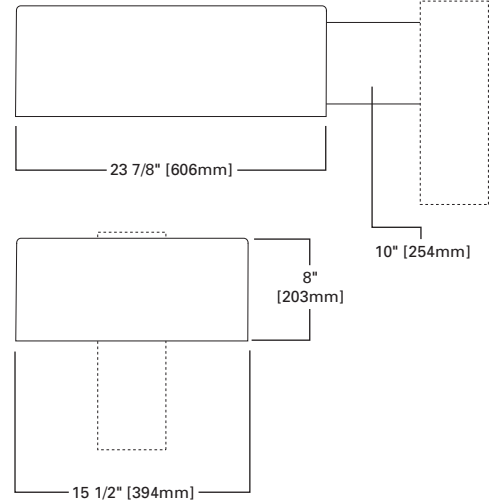
ARM-MOUNTED AREA/SITE LUMINAIRE

70-400W  
MH/HPS/SMH



STREETWORKS™

IP65 RATED



**HOUSING**

Die-cast aluminum housing and door. ANSI wattage/source label.

**LENS**

Tempered glass lens.

**REFLECTOR**

Hydroformed anodized aluminum reflector.

**SOCKET**

Mogul-base porcelain lamp socket.

**GASKET**

The optical chamber is sealed with a die-cut, dacron polyester gasket.

**BALLAST**

Removable swing-down ballast assembly available on arm mount RCL only. Ballast standard hard mounted in RCS slipfitter. Optional hard mount ballast. (RCL only).

**DOOR**

Die-cast aluminum with spring-loaded latches for toolless entry.

**SLIPFITTER (RCS)**

Optional internal slipfitter fits 1 1/4"-2 3/8" O.D. pipe.

**FINISH**

Standard polyester powder coat finish in bronze. For more color options see optional colors or consult your Streetworks representative for more information.

**ORDERING INFORMATION**

**SAMPLE NUMBER:** RCL70SP23D4

PRODUCT FAMILY	LAMP WATTAGE	LAMP TYPE <sup>3</sup>	BALLAST TYPE <sup>3</sup>	VOLTAGE <sup>3</sup>	DISTRIBUTION	OPTIONS + ACCESSORIES (See Below)
RCL=Arm Mount	70=70W	S=HPS	H=Reac./HPF	2=120V	1D=Type I MCO	
RCS=Slipfitter Mount <sup>1</sup>	10=100W	R=SMH	N=Hi. Reac./NPF	0=208V	2D=Type II MCO	
	15=150W <sup>2</sup>	M=MH	P=Hi. Reac./HPF	4=240V	3D=Type III MCO	
	17=175W		R=Reac./NPF	7=277V	AC=Area Cutoff-Type IV <sup>4</sup>	
	20=200W		W=CWA	8=480V		
	25=250W		C=CWI	W=Multi-Tap wired 120V		
	31=310W		K=10KV CWA	F=120/240 wired 120V		
	40=400W			N=240V		
	24=250/400W wired 250W			N=Multi-Tap wired 277V		
	42=400/250W wired 400W			V=Multi-Tap wired 240V		

**OPTIONS + ACCESSORIES** [Must be listed in the order shown and separated by a dash]

**OPTIONS** (add as suffix)

- 1=Single Fused, Internally Mounted (120 or 277V)
- 2=Double Fused, Internally Mounted (208, 240, or 480V)
- 4=Photocontrol Receptacle
- WH=White
- BK=Black
- AP=Grey
- V=External, Auxiliary Vandal Shield, 1/8" Thick Polycarbonate
- B=House Side Cutoff
- H=Plug-in Starter Receptacle
- P=Prismatic Drop Lens
- R=Hard Mount Ballast (for arm mount fixture only)
- T=Terminal Block
- U=U.L. Listed
- AIR=Arm Included for Round Pole
- AIS=Arm Included for Square Pole

**ACCESSORIES** (order separately)

- OA1224=TufGuard Vandal Shield
- OA1016=105-285V Photocontrol
- OA1013=Shorting Cap
- OA1027=480V Photocontrol
- OA1061=Direct Mount Plate for Square Pole
- OA1062=10" Arm for Square Pole (EPA .53)
- OA1063=Direct Mount Plate for Round Pole
- OA1064=10" Arm for Round Pole (EPA .53)
- OA1065=Wall Mount Bracket
- OA1090=Adjustable Slipfitter for 2 3/8" O.D. Vertical Tenon

**OPTIONAL COLORS** [Standard color is bronze, other finish colors available. Consult your Cooper Lighting representative]



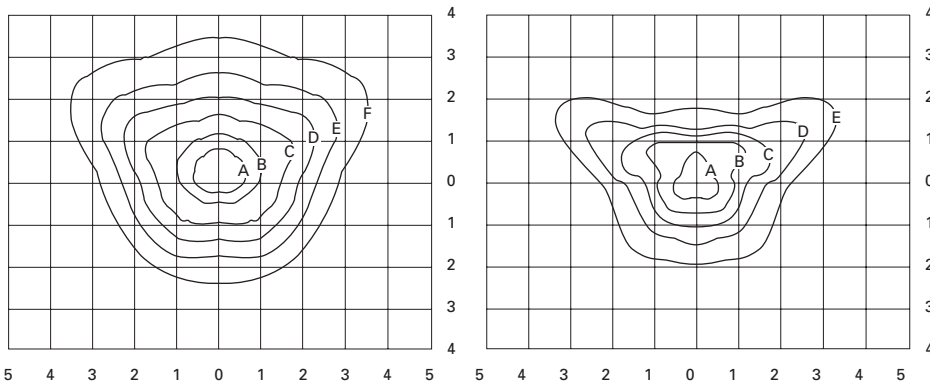
**SHIPPING DATA**

Approximate Net Weight:

46 lbs. (21 kgs.)

**NOTE:** 1 Hard mount ballast only. 2 150W HPS units are for S55 lamp. 3 Refer to technical section for lamp/ballast/voltage compatibility. 4 ED28 Lamp.

PHOTOMETRICS [Complete IES files available at [www.cooperlighting.com](http://www.cooperlighting.com)]



**RC40SAC.IES**  
400-Watt HPS  
50,000-Lumen Lamp  
Area Cutoff

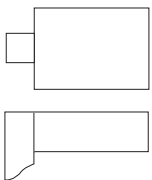
**RC40M3D.IES**  
400-Watt MH  
34,000-Lumen Lamp  
Type III

**FOOTCANDLE TABLE**

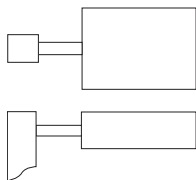
Select mounting height and read across for footcandle values of each isofootcandle line. Distance in units of mounting height.

Mounting Height	Footcandle Values for Isofootcandle Lines					
	A	B	C	D	E	F
<b>RC40SAC.IES</b>						
20'	14.40	7.20	2.88	1.44	0.72	0.28
25'	10.00	5.00	2.00	1.00	0.50	0.20
30'	7.50	3.75	1.50	0.75	0.37	0.15
<b>RC40M3D.IES</b>						
20'	14.40	7.20	2.88	1.44	0.72	0.28
25'	10.00	5.00	2.00	1.00	0.50	0.20
30'	7.50	3.75	1.50	0.75	0.37	0.15

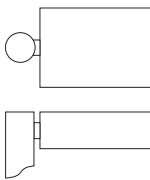
ACCESSORY & MOUNTING SYSTEMS



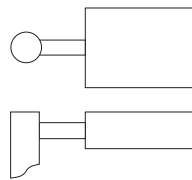
**OA1061**  
No Arm



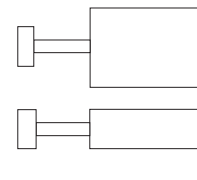
**OA1062**  
10° Arm



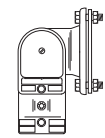
**OA1063**  
Adapter



**OA1064**  
10° Arm



**OA1065**  
Wall Bracket



**OA1090**  
Adjustable Slipfitter for Tenon Mount

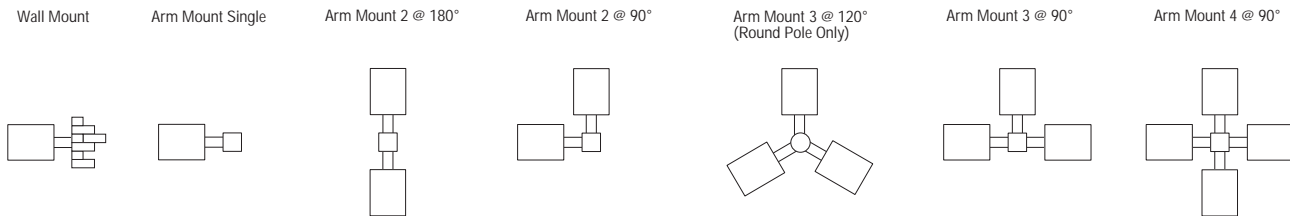
Square Pole

Round Pole

Wall mounting bracket—mounts over 4" square or round electrical box. Includes 10° arm.

**NOTE:** Standard color bronze. Other colors available. Consult Streetworks Representative.

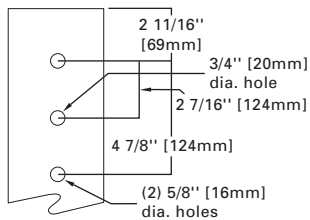
MOUNTING CONFIGURATIONS



E.P.A. TABLE	DRILL PATTERN	SINGLE					
		[W/Arm where applicable]	2 @ 180°	2 @ 90°	3 @ 90°	3 @ 120°	4 @ 90°
RCL + RCS	"M"	2.11	4.22	4.22	5.8	5.8	6.59

DRILLING PATTERNS

TYPE "M"



WALL MOUNT DRILLING

