

Gateway®



User Guide

Gateway FPD-2020 Monitor


Contents

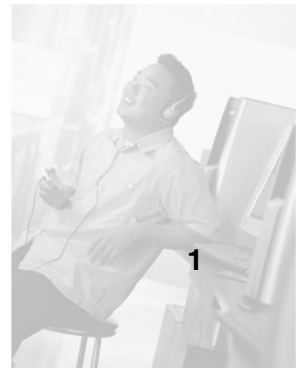
Using Your FPD 2020 Monitor	1
Connecting the monitor	2
Starting the monitor	7
Adjusting monitor settings	9
External controls	9
OSD options	11
Software controls	14
Video modes	18
Power management	19
ENERGY STAR	19
Energy declaration	19
Maintenance	20
Troubleshooting	20
No power	20
No picture	21
Display colors are wrong	22
Picture has shadows or “ghosts”	22
Color is not uniform	22
Image is not sized or centered correctly	23
The monitor has pixels that are always dark or too bright	23
Specifications	24
Safety, Regulatory, and Legal Information	25



Using Your FPD 2020 Monitor

The FPD 2020 monitor is a high-resolution color LCD with:

- 1600 × 1200 maximum resolution
 - Over 16 million colors
 - Excellent contrast and legibility
 - Space-saving and lightweight design
 - Reduced power usage
- 



Connecting the monitor



To connect the monitor:

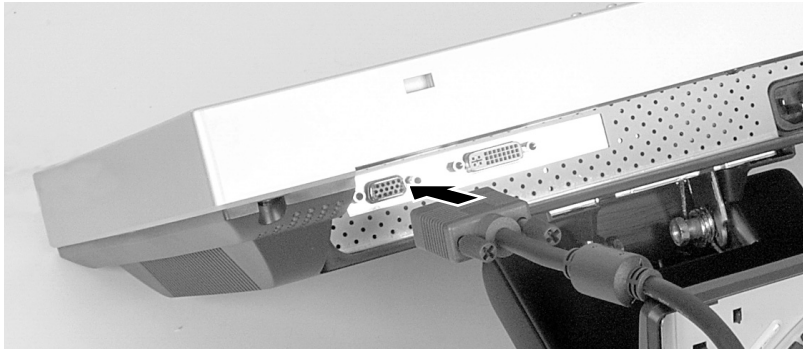
- 1 Position your computer and the monitor so you can reach the connections on each.
- 2 Lay the monitor on its back.



- 3 Connect the power cord to the power connector underneath the bottom of the screen.

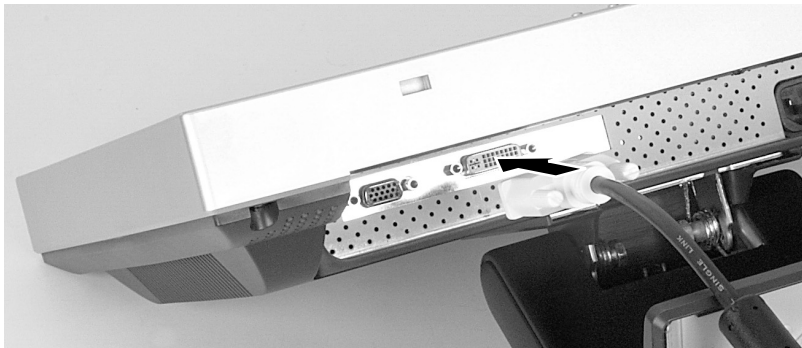


- 4 If your computer supports analog video (blue video connector), connect the analog video cable to the blue analog connector underneath the bottom of the screen.



- OR -

If your computer supports digital video (white video connector), connect the digital video cable to the white DVI connector underneath the bottom of the screen.



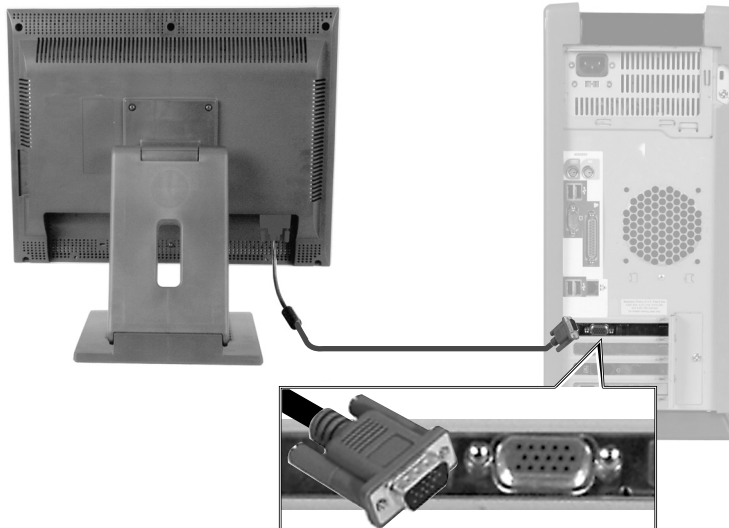
Important



Make sure that you only connect one video cable to the monitor and computer. The only way to use both connections is to share the monitor between two computers. Use the **SOURCE** button to change between computers. For more information, see “Adjusting monitor settings” on page 9.

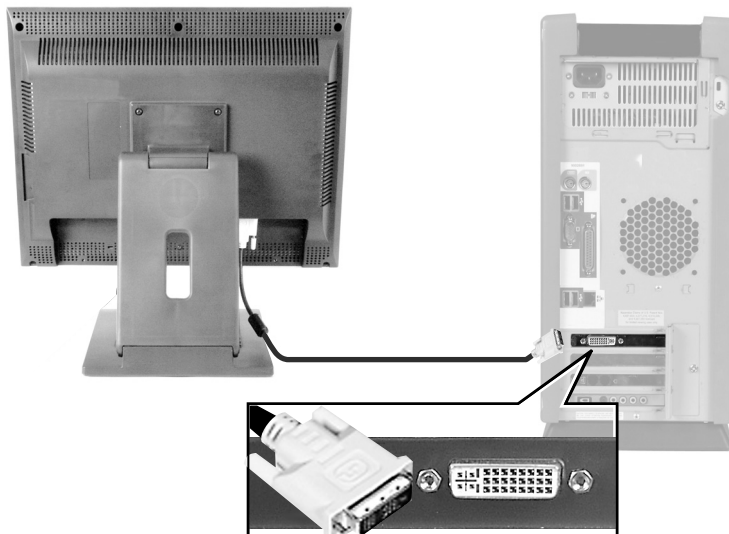
- 5 Return the monitor to its upright position.
- 6 Make sure that your computer is turned off.

- 7 If your computer supports analog video, then connect the analog video cable to the matching blue video port on the back of your computer.

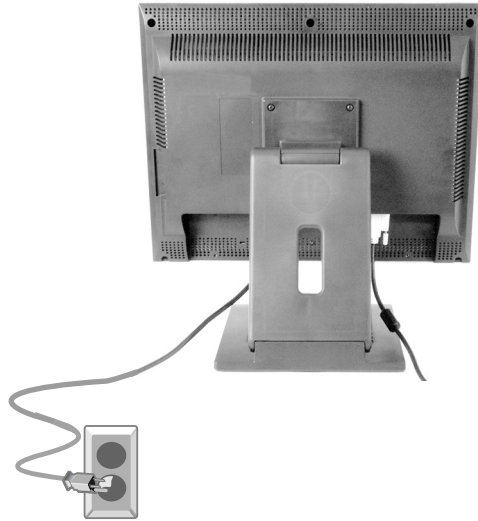


- OR -

If your computer supports digital video, then connect the digital video cable to the matching white video port on the back of your computer.



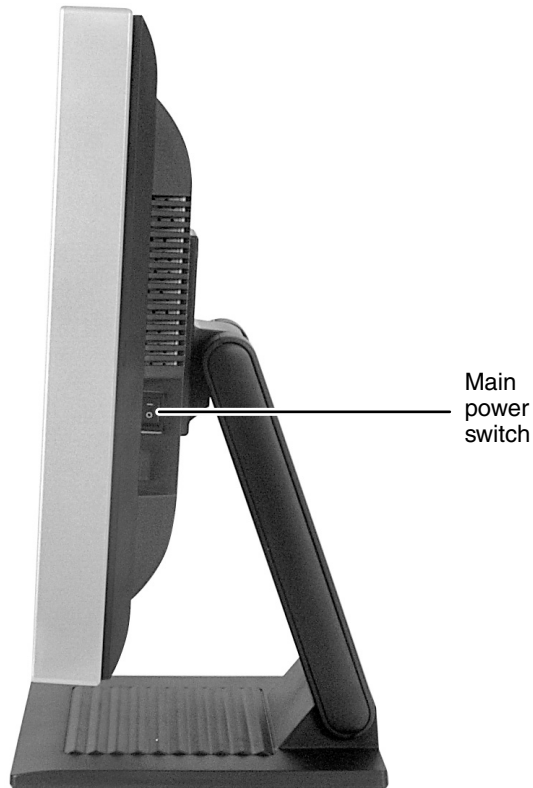
- 8 Plug the power cord into a correctly grounded electrical outlet.



Starting the monitor

 **To start the monitor:**

- 1 Press the main power switch on the right side of monitor. The power LED on the front of the monitor turns on.



Tips & Tricks



After the main power switch is on, use the power button on the front of the monitor to turn the monitor off and on. You cannot use the front power button until the main power switch is on.

- 2 Turn on your computer.



- 3 After your computer is running, the power LED on the monitor should be green. Allow about 10 seconds for the display image to appear. If the power LED is not green or you do not see a display image, check the connections. For more troubleshooting information, see “Troubleshooting” on page 20.
- 4 Adjust the tilt of the monitor for the best viewing angle.
- 5 After you see the Windows desktop, press the **AUTO** button to automatically adjust your display image to the ideal settings.
- 6 Use the on-screen display (OSD) to adjust other monitor settings. For more information, see “Adjusting monitor settings” on page 9.

Important



When adjusting the monitor settings, **always** press the **AUTO** button before entering the OSD. This will automatically adjust the display image to the ideal settings for the current screen resolution.

The best screen resolution is 1600 × 1200.

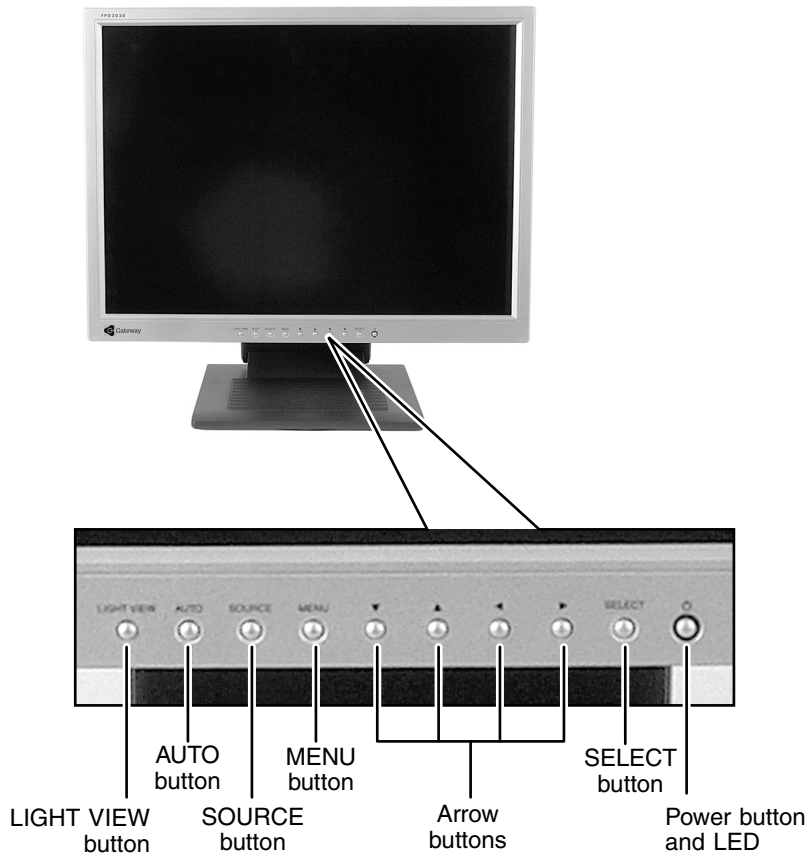


Adjusting monitor settings

Use the external controls (located on the monitor itself) and software controls (accessible in Windows) to adjust the display image. For more information about software controls, see “Software controls” on page 14.

External controls

This monitor features an on-screen display (OSD) that lets you adjust and save contrast, brightness, and other settings for the monitor. The monitor saves changes you make to the settings, even if you turn off the monitor.



- **LIGHT VIEW**
Press to select a preset viewing mode or customize one of your own. Preset modes include optimized settings for text, movies, or photos in either day or night ambient light levels.
- **AUTO**
Press to automatically optimize the monitor's image position, clock, and phase.
- **SOURCE**
Press to view the source signal or switch between computers if you have two computers connected to the monitor.
- **MENU**
Press to view the OSD. Press again to exit.
- **Arrows**
OSD active: Press to select or adjust OSD options.
OSD inactive: Press ◀ and ▶ to adjust the contrast. Press ▲ and ▼ to adjust the brightness.
- **SELECT**
Press to make a selection in the OSD.
- **Power/LED**
After the main power switch is on, use this button to turn the monitor off and on. For information about the main power button, see "Starting the monitor" on page 7.

OSD options

▶ To adjust the OSD settings:

- 1 Press the **MENU** button. The OSD menu opens.
- 2 Use the Δ and ∇ buttons to highlight a control, then press the **SELECT** button.
- 3 Use the \triangleleft \triangleright Δ ∇ buttons to adjust the control to the desired level.
- 4 Press the **SELECT** button to return to the main navigation bar on the left of the OSD menu.
- 5 When you have finished making all adjustments, press the **MENU** button to exit the OSD.

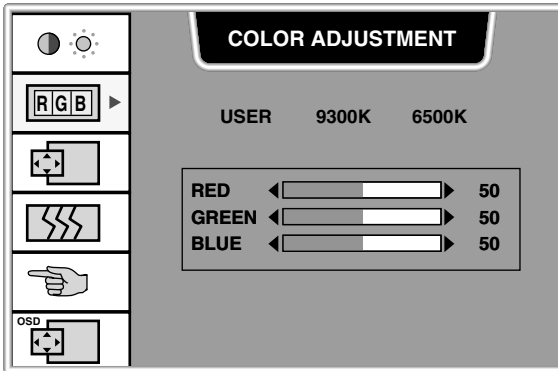


OSD menus

OSD Menu	Description
	<p>Brightness. Press the Δ and ∇ buttons to adjust the brightness of the screen. Use the lowest brightness setting you are comfortable with to maximize the life of the monitor backlights.</p> <p>You may need to readjust brightness after the monitor has warmed up.</p> <p>Contrast. Press the \triangleleft and \triangleright buttons to adjust the contrast of the screen.</p>

OSD Menu

Description

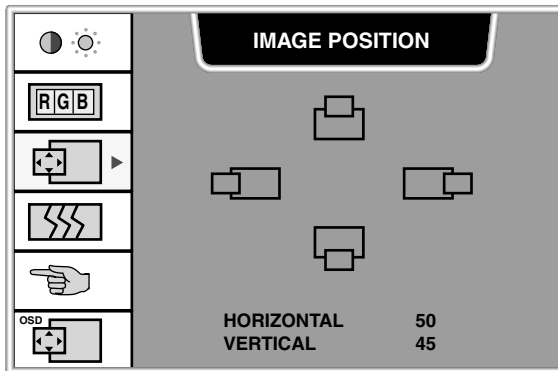


Preset. Press the ◀ and ▶ buttons to adjust the color temperature. 9300K is bluish white.

6500K is reddish white (default).

Red, Green, Blue. Press the ▾ button to move to the next color.

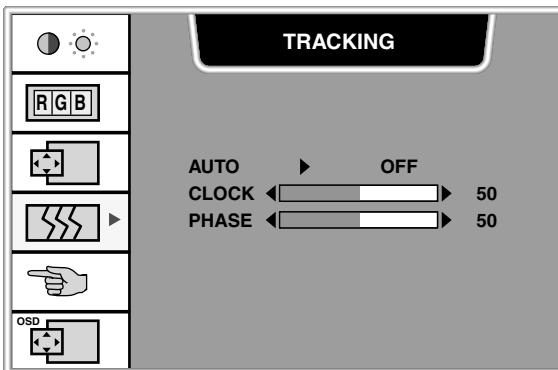
Press the ◀ and ▶ buttons to customize your color levels.



Vertical position. Press the ▲ and ▼ buttons to move the image up and down.

Horizontal position. Press the ◀ and ▶ buttons to move the image left and right.

You can also use the Auto function to configure the vertical and horizontal position automatically. For more information on the Auto function, see “External controls” on page 9.

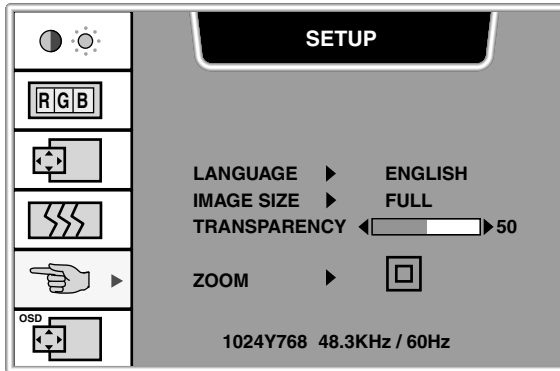


Clock. Press the ◀ and ▶ buttons to minimize any vertical bars or stripes visible on the screen background. The horizontal screen size will also change.

Phase. Press the ◀ and ▶ buttons to remove any horizontal distortion and clear or sharpen the displayed characters.

OSD Menu

Description

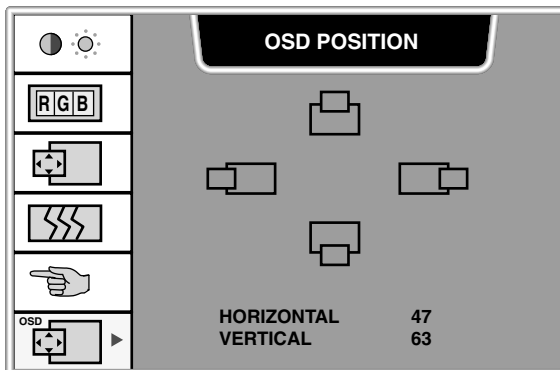


Language. Press the ◀ and ▶ buttons to change the language of the OSD menu.

Image Size. Press the ◀ and ▶ buttons to change the size of the screen display area.

Transparency. Press the ◀ and ▶ buttons to change the color intensity of the OSD menu.

Zoom. Press **SELECT** to enter the Zoom submenu, then press the ◀ and ▶ buttons to zoom in and out within the screen display area. After you zoom in, the Horizontal and Vertical controls are active. Use the ◀ and ▶ buttons to move horizontally and vertically within the zoomed area.



OSD Position. Press the ◀ ▶ ▲ ▼ buttons to adjust the OSD window position on the screen.

Software controls

Adjusting the color depth and screen resolution are two of the most basic monitor settings you may need to change.

Adjusting the color depth

Color depth is the number of colors your video card uses. Most images look best displayed with the maximum number of colors available.

Windows lets you choose from several color depth settings for the monitor. We recommend that you use the 32-bit True Color setting or the highest setting available at all times.

If the color in your images seems “false” or “jumpy,” especially after you have played a game or run a video-intensive program, check the color depth setting and return it to 32-bit True Color, if necessary.



To change the color depth:

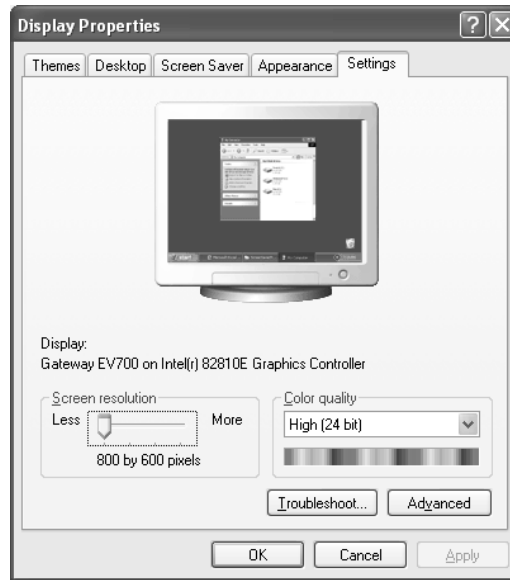
1 In Windows XP, click **Start**, then click **Control Panel**. The *Control Panel* window opens. If your Control Panel is in Category View, click **Appearance and Themes**.

- OR -

In Windows 2000, click **Start**, **Settings**, then click **Control Panel**. The *Control Panel* window opens.

2 Click/Double-click the **Display** icon. The *Display Properties* dialog box opens.

- 3 Click the **Settings** tab.



- 4 Click the arrow button to open the **Color quality** or **Colors** list, then click the color depth you want.
- 5 To save your changes in Windows XP, click **OK**, then click **Yes**.

- OR -

To save your changes in Windows 2000, click **OK**, then click **OK** again.



Help and Support



For more information about adjusting monitor settings in Windows XP, click **Start**, then click **Help and Support**.

Type the keyword **changing display settings** in the HelpSpot **Search** box Search →, then click the arrow.

Adjusting the screen resolution

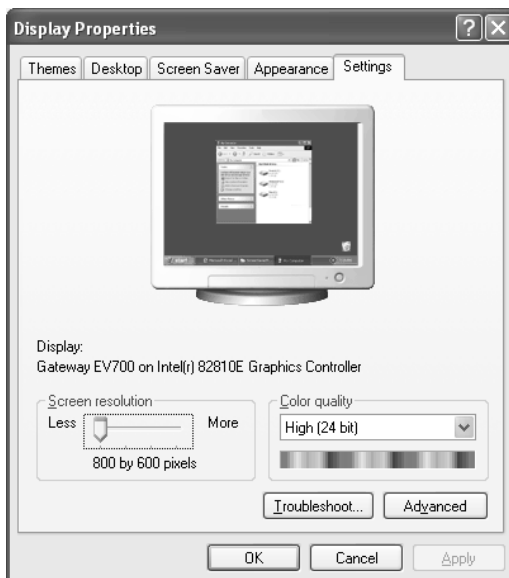
You can change the screen resolution to a size you prefer. For example, you can increase the resolution to fit more icons on your desktop, or you can decrease the resolution to make reading and identifying objects on the monitor easier. The higher the resolution, the smaller individual components of the screen (such as icons and menu bars) appear.

To change the screen resolution:

- 1 In Windows XP, click **Start**, then click **Control Panel**. The *Control Panel* window opens. If your Control Panel is in Category View, click **Appearance and Themes**.

- OR -

In Windows 2000, click **Start**, **Settings**, then click **Control Panel**. The *Control Panel* window opens.
- 2 Click/Double-click the **Display** icon. The *Display Properties* dialog box opens.
- 3 Click the **Settings** tab.



- 4 Drag the **Screen resolution** or **Screen area** slider to the size you prefer.
- 5 To save your changes in Windows XP, click **OK**, then click **Yes**.

- OR -


To save your changes in Windows 2000, click **OK**, then click **OK** again.



Help and Support



For more information about adjusting screen resolution in Windows XP, click **Start**, then click **Help and Support**.

Type the keyword **changing screen resolution** in the HelpSpot **Search** box Search , then click the arrow.

Video modes

The monitor supports several video modes.

- Best screen resolution is 1600 × 1200.

The supported video modes are:

	Screen Resolution (display mode)	Horizontal Frequency	Vertical Frequency
1	640 × 480	31.47 kHz	60 Hz
2	640 × 480	37.5 kHz	75 Hz
3	720 × 400	31.47 kHz	70 Hz
4	800 × 600	37.88 kHz	60 Hz
5	800 × 600	46.88 kHz	75 Hz
6	1024 × 768	48.36 kHz	60 Hz
7	1024 × 768	60.02 kHz	75 Hz
8	1280 × 1024	63.98 kHz	60 Hz
9	1280 × 1024	79.976 kHz	75 Hz
10	1600 × 1200 (best screen resolution)	75 kHz	60 Hz

If you do not use the best mode for the monitor, the display image may look slightly “fuzzy.”

Power management

ENERGY STAR

As an ENERGY STAR® Partner, Gateway has determined that this product meets the ENERGY STAR guidelines for energy efficiency.

This monitor complies with the EPA's International ENERGY STAR Program, which is a program designed to encourage manufacturers of computer equipment to build circuitry into their products to reduce energy consumption during time of non-use.

Energy declaration

When connected to a computer that supports the VESA Display Power Management Signaling (DPMS) Protocol, the monitor can conserve significant energy by reducing power consumption during periods of non-use. When your computer goes into the energy saving mode, the monitor will then enter the Active Off mode (different from total shut down). In the Active Off mode the Power LED will still show amber.

Use these conventions and the power can be reduced to the following levels:

VESA State	LED Indicator	Power Consumption
On	Green	<60 W
Active Off	Amber	<3 W

To “wake” the monitor when it is in Active Off mode, move the mouse or press any keyboard key.

Access the power management options in the Control Panel to change the period of time after which the monitor enters these low power states.

Maintenance

To keep the monitor in optimal working order:

- Do not block the ventilation holes.
- Do not expose the monitor to rain or use near water.
- Keep the monitor away from radiators or heat vents.
- Keep the monitor out of direct sunlight.

To clean the monitor, use a soft cloth slightly moistened with water only. Wipe the cabinet, screen, and controls.

Caution



Do not use any type of abrasive pad or glass cleaner. You will permanently scratch the screen.

Troubleshooting

If you have problems with the monitor, the information in this troubleshooting section may help you solve them.

Important



Make sure that the monitor has warmed up for approximately 30 minutes before making any judgments about the picture quality.

No power

Make sure that the power cord is connected correctly to both the back of the monitor and the wall outlet. For more information about connecting the power cord, see “Connecting the monitor” on page 2.

No picture

- Make sure that the power cord is connected correctly to both the back of the monitor and the wall outlet. For more information about connecting the power cord, see “Connecting the monitor” on page 2.
- Make sure that the video cable is connected securely to the back of the monitor and computer. For more information about connecting the video cable, see “Connecting the monitor” on page 2.
- Make sure that the monitor power buttons are turned on.
- If you have two computers connected to the monitor, press the **SOURCE** button on the front of the monitor to switch between computers. For more information about the **SOURCE** button, see “External controls” on page 9.
- If the power LED is amber:
 - Make sure that your computer is turned on.
 - Move the mouse or press any key on the keyboard to bring the monitor out of Active Off mode.
 - Restart your computer with the monitor turned on.
 - Make sure that the video cable is not damaged.
 - Check the video port and the end of the video cable for any pins that might be bent or pushed in.
- Turn off the monitor and unplug the video cable from the back of your computer. Turn the monitor back on and wait for ten seconds. If the monitor is functioning correctly, a self-diagnostic screen appears. For more information about connecting the video cable, see “Connecting the monitor” on page 2.

Display colors are wrong

- Press the **AUTO** button to automatically adjust the display image to the ideal settings.
- Restart your computer with the monitor turned on.
- Make sure that the video cable is connected securely to the back of the monitor and your computer. For more information about connecting the power cord, see “Connecting the monitor” on page 2.
- Make sure that the video cable is not damaged.
- Check the video port and the end of the video cable for any pins that might be bent or pushed in.

Picture has shadows or “ghosts”

- Press the **AUTO** button to automatically adjust the display image to the ideal settings.
- Remove any extension cables or switchboxes.
- Make sure that the video cable is connected securely to the back of the monitor and your computer. For more information about connecting the power cord, see “Connecting the monitor” on page 2.
- Make sure that the video cable is not damaged.
- Check the video port and the end of the video cable for any pins that might be bent or pushed in.

Color is not uniform

- Make sure that the monitor warms up for at least 30 minutes before making a final judgment about color uniformity or brightness.
- Press the **AUTO** button to automatically adjust the display image to the ideal settings.

Image is not sized or centered correctly

- Press the **AUTO** button to automatically adjust the display image to the ideal settings.
- Use the position controls to adjust the image. For instructions on how to adjust the display image position, see “Adjusting monitor settings” on page 9.

The monitor has pixels that are always dark or too bright

This condition is normal and inherent in the TFT technology used in active-matrix LCD screens. Gateway’s inspection standards keep these to a minimum. If you feel these pixels are unacceptably numerous or dense on your display, contact Gateway Technical Support to identify whether a repair or replacement is justified based on the number of pixels affected.

Specifications

Specifications are subject to change without notice or obligation.

Monitor	20.1-inch active-matrix TFT (Thin Film Transistor) LCD
Best screen resolution	1600 × 1200
Display colors	Over 16 million colors
Power input	AC 100-240 V 50/60 Hz 1.2 A
Power consumption	Normal operation: <60 W Active Off operation: <3 W
Dimensions	17.56 × 8.78 × 17.60 inches (W × D × H) 44.6 × 22.3 × 44.7 cm (W × D × H)
Power management	Meets EPA ENERGY STAR® and VESA DPMS requirements
Certifications	UL, cUL, EPA, NOM, and FCC Class B

Many products for Gateway and its subsidiaries are custom engineered by our suppliers to Gateway specifications and may vary from similarly marketed products.



Safety, Regulatory, and Legal Information

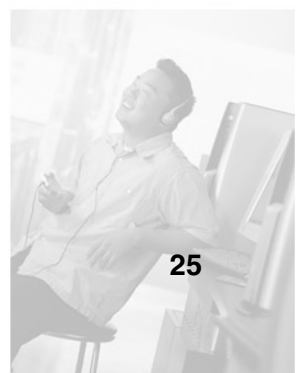
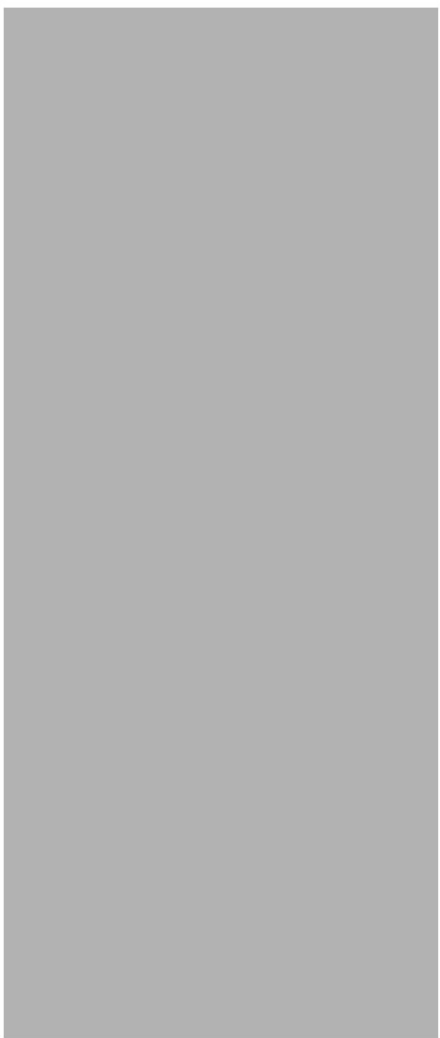
Important safety information

Your Gateway system is designed and tested to meet the latest standards for safety of information technology equipment. However, to ensure safe use of this product, it is important that the safety instructions marked on the product and in the documentation are followed.

Warning



Always follow these instructions to help guard against personal injury and damage to your Gateway system.



Setting up your system

- Read and follow all instructions marked on the product and in the documentation before you operate your system. Retain all safety and operating instructions for future use.
- Do not use this product near water or a heat source such as a radiator.
- Set up the system on a stable work surface.
- The product should only be operated from the type of power source indicated on the rating label.
- If your product has a voltage selector switch, make sure that the switch is in the proper position for your area. The voltage selector switch is set at the factory to the correct voltage.
- Openings in the monitor case are provided for ventilation. Do not block or cover these openings. Make sure you provide adequate space, at least 6 inches (15 cm), around the system for ventilation when you set up your work area. Never insert objects of any kind into the monitor ventilation openings.
- Some products are equipped with a three-wire power cord to make sure that the product is properly grounded when in use. The plug on this cord will only fit into a grounding-type outlet. This is a safety feature. If you are unable to insert the plug into an outlet, contact an electrician to install the appropriate outlet.
- If you use an extension cord with this system, make sure that the total ampere rating on the products plugged into the extension cord does not exceed the extension cord ampere rating.
- If your system is fitted with a TV Tuner, cable, or satellite receiver card, make sure that the antenna or cable system is electrically grounded to provide some protection against voltage surges and buildup of static charges.

Care during use

- Do not walk on the power cord or allow anything to rest on it.
- Do not spill anything on the system. The best way to avoid spills is to avoid eating and drinking near your system.
- Do not expose the monitor to rain or use near water. If the monitor does get exposed to moisture, unplug it and allow it to dry for 24 hours. Call Gateway Technical Support for advice on whether the monitor is safe to turn back on.
- When the monitor is turned off, a small amount of electrical current still flows through the monitor. To avoid electrical shock, always unplug all power cables and modem cables from the wall outlets before cleaning the system.
- Unplug the system from the wall outlet and refer servicing to qualified personnel if:
 - The power cord or plug is damaged.
 - Liquid has been spilled into the system.
 - The system does not operate properly when the operating instructions are followed.
 - The system was dropped or the cabinet is damaged.
 - The system performance changes.

Warning



To prevent electric shock, never remove the cover. No user serviceable parts inside. Refer servicing to qualified service personnel.

Replacement parts and accessories

Use only replacement parts and accessories recommended by Gateway.

Important



Do not use Gateway products in areas classified as hazardous locations. Such areas include patient care areas of medical and dental facilities, oxygen-laden environments, or industrial facilities.

Regulatory compliance statements

United States of America

Federal Communications Commission (FCC) Unintentional emitter per FCC Part 15

This device has been tested and found to comply with the limits for a Class B digital device, pursuant to Part 15 of the FCC rules. These limits are designed to provide reasonable protection against harmful interference in a residential installation. This equipment generates, uses, and can radiate radio frequency energy and, if not installed and used in accordance with the instructions, may cause harmful interference to radio or television reception. However, there is no guarantee that interference will not occur in a particular installation. If this equipment does cause interference to radio and television reception, which can be determined by turning the equipment off and on, the user is encouraged to try to correct the interference by one or more of the following measures:

- Reorient or relocate the receiving antenna
- Increase the separation between the equipment and receiver
- Connect the equipment to an outlet on a different circuit from that to which the receiver is connected
- Consult the dealer or an experienced radio/TV technician for help.

Compliance Accessories: The accessories associated with this equipment are: shielded video cable. These accessories are required to be used in order to ensure compliance with FCC rules.

FCC declaration of conformity

Responsible party:

Gateway Companies, Inc.
610 Gateway Drive, North Sioux City, SD 57049
(605) 232-2000 Fax: (605) 232-2023

This device complies with Part 15 of the FCC Rules. Operation of this device is subject to the following two conditions: (1) this device may not cause harmful interference, and (2) this device must accept any interference received, including interference that may cause undesired operation.

Caution



Changes or modifications not expressly approved by Gateway could void the FCC compliance and negate your authority to operate the product.

Canada

Industry Canada (IC)

Unintentional emitter per ICES-003

This digital apparatus does not exceed the Class B limits for radio noise emissions from digital apparatus as set out in the radio interference regulations of Industry Canada.

Le présent appareil numérique n'émet pas de bruits radioélectriques dépassant les limites applicables aux appareils numériques de Classe B prescrites dans le règlement sur le brouillage radioélectrique édicté par Industrie Canada.

EPA ENERGY STAR



As an ENERGY STAR® Partner, Gateway has determined that this product meets the ENERGY STAR guidelines for energy efficiency when used with a computer equipped with a Display Power Management System.

California Proposition 65 Warning

Warning



This product contains chemicals, including lead, known to the State of California to cause cancer, birth defects or reproductive harm.

Notices

Copyright © 2004 Gateway, Inc.
All Rights Reserved
14303 Gateway Place
Poway, CA 92064 USA

All Rights Reserved

This publication is protected by copyright and all rights are reserved. No part of it may be reproduced or transmitted by any means or in any form, without prior consent in writing from Gateway.

The information in this manual has been carefully checked and is believed to be accurate. However, changes are made periodically. These changes are incorporated in newer publication editions. Gateway may improve and/or change products described in this publication at any time. Due to continuing system improvements, Gateway is not responsible for inaccurate information which may appear in this manual. For the latest product updates, consult the Gateway Web site at www.gateway.com. In no event will Gateway be liable for direct, indirect, special, exemplary, incidental, or consequential damages resulting from any defect or omission in this manual, even if advised of the possibility of such damages.

In the interest of continued product development, Gateway reserves the right to make improvements in this manual and the products it describes at any time, without notices or obligation.

Trademark Acknowledgments

Gateway and the Black-and-White Spot Design are trademarks or registered trademarks of Gateway, Inc. in the U.S. and other countries. SpotShop, Spotshop.com, and Your:)Ware are trademarks of Gateway, Inc. Intel, Intel Inside logo, and Pentium are registered trademarks and MMX is a trademark of Intel Corporation. Microsoft, MS, MS-DOS, and Windows are trademarks or registered trademarks of Microsoft Corporation. All other product names mentioned herein are used for identification purposes only, and may be the trademarks or registered trademarks of their respective companies.



MAN MON FPD2020 USR GDE R2 2/04

