



# FlexScan® T765

50 cm (19 inch) Class Color Monitor

The FlexScan T765's color fidelity, high brightness, and pinpoint focus provide the extreme precision needed for CAD/CAM, animation, and other graphics intensive applications. Dual input terminals for connection of two computers along with a USB hub widen usage possibilities and simplify desktop maintenance. Finally, choosing the perfect image parameters for any application from text based to multimedia is now simpler and faster than ever with EIZO's Fine Contrast function.

## Features:

- Fine aperture grill pitch of 0.24 mm in the center, 0.25 mm at the edges.
- Recommended resolution of 1280 × 1024 / 89 Hz.
- Enhanced Fine Contrast function with Text, Browser, Picture, Graphic, Movie, and sRGB modes.
- USB Hub with one upstream, four downstream ports.
- Control of display parameters via the mouse or keyboard with ScreenManager Pro for USB software.
- Independent adjustment of foreground and background windows with Window Movie mode.
- Dual input terminals and user selectable input priority.
- TÜV ECO Circle 2000 and TCO'99 Compliance.



# FlexScan® T765

50 cm (19 inch) Class Color Monitor



## High Brightness CRT

A new flat-faced aperture grill CRT features a high maximum luminance of 230 cd/m<sup>2</sup> for brighter images and eye-catching DVD and streaming video playback.

## Fine Contrast

This EIZO exclusive feature now includes front button selectable Text, Browser, Picture, Graphic, and Movie modes, each offering different brightness, sharpness, and color temperature settings. Additionally, an sRGB mode, accessible through the OSD, offers color matching with software and other peripheral devices that also support the sRGB color space.

## USB Hub

One upstream and four downstream ports provide connection to USB compliant peripherals. For quick peripheral exchange, one downstream port is housed in a drop-down lid near the front of the monitor.

## Window Movie Mode

The brightness levels of the foreground and background windows can be adjusted independently for more comfortable viewing of DVD, streaming video, and other animated images. (Windows® 98 SE/Me/2000 only.)

## Dual Input Terminals

D-Sub and BNC × 5 input terminals support the simultaneous connection of two computers. User controlled input priority ensures the most important data is always displayed, and switching between the two PC sources is as simple as pressing a button on the front cabinet.

## TÜV ECO Circle 2000 Compliance

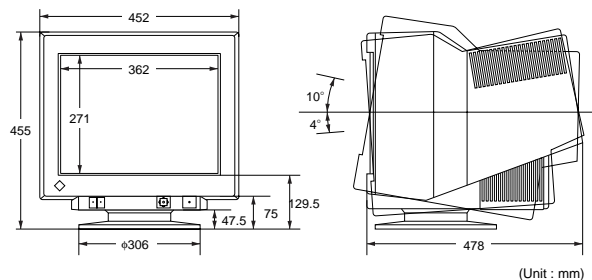
The FlexScan T765 meets the requirements for the TÜV ECO Circle 2000 mark. Other rigorous standards it complies with include TCO'99, the CE Mark, and the EPA ENERGY STAR® Program.



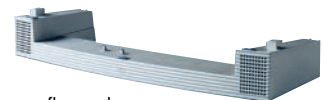
## FlexScan® T765 Specifications

CRT Size and Type	50 cm (19 inch) class, 90° deflection Tension Mask
CRT AG Pitch	0.24 mm (center) 0.25 mm (edges)
CRT Surface Treatment	Super ErgoCoat®
Scanning Frequency	H: 30 - 110 kHz, V: 50 - 160 Hz
Input Signals	RGB Analog
Input Terminal	D-Sub 15-pin and BNC × 5 (switchable)
Active Display Size	362 mm (H) × 271 mm (V) (Diagonal: 452 mm)
Recommended Resolution	1280 dots × 1024 lines flicker-free at 107 Hz (1600 dots × 1200 lines at 92 Hz addressable)
Screen Control	ScreenManager®, ScreenManager Pro for USB, One Touch Auto Adjustment Function (Auto-Sizing)
Pixel Dot Clock	280 MHz (typical)
Power Management	VESA DPMS
Power Consumption	140 watts
Power Save Mode 1	Less than 10 watts
Power Save Mode 2	Less than 3 watts
Plug & Play <sup>1</sup>	DDC 2B
Dimensions	452 mm (W) × 455 mm (H) × 478 mm (D)
Net Weight	27.5 kg
Certifications and Standards	TCO'99, TÜV ECO Circle 2000, TÜV/GS, c-Tick, CE, CB, UL 1950, CSA C22.2 No.950, FCC-B, Canadian ICES-003-B, TÜV/S, VCCI-B, EPA ENERGY STAR® Program, Energy 2000

<sup>1</sup> Only valid when computer system supports all Plug & Play functions (personal computer, graphics board, Windows® 95/98/2000). For more details, please refer to the Windows 95/98/2000, personal computer, and graphics board manuals or contact the manufacturers.



## i-Sound Sound Unit



Attachable sound unit with full range bass reflex and amplifier output of one watt per channel. This unit is sold separately from the FlexScan T765.

Specifications are subject to change without notice.

ENERGY STAR® is a U.S. registered mark. As an ENERGY STAR® Partner, Eizo Nanao Corporation has determined that this product meets the ENERGY STAR® guidelines for energy efficiency. Copyright © 2001 Eizo Nanao Corporation. All rights reserved. All product names are trademarks or registered trademarks of their respective companies. PowerManager and i-Sound, are trademarks, and FlexScan, EIZO, ScreenManager, and ErgoCoat are registered trademarks of Eizo Nanao Corporation.



**EIZO NANA O CORPORATION**

153 Shimokashiwano, Matto, Ishikawa 924-8566

Japan

Phone : +81 76 277-6792 Fax : +81 76 277-6793

<http://www.eizo.com/>