

## SyncMaster 592V/592S/794V/794S



### Install drivers



### Install programs







Notational

Power

Installation

Clean

Others

## Notational

Please read the following safety instructions as they are designed to prevent damage to property and harm to the user.

### Warning / Caution



Failure to follow directions noted by this symbol could result in bodily harm or damage to equipment.

### Notational Conventions



Prohibited



Important to read and understand at all times



Do not disassemble



Disconnect the plug from the outlet



Do not touch



Grounding to prevent an electric shock

Notational

Power

Installation

Clean

Others

## Power



When not used for extended periods of time, set your computer to a screen saver.

- If the same image is present for long periods of time, Phosphor Burnt can be occurred, or the screen may be blurred.

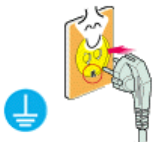




- **Do not use a damaged or loose plug.**
  - This may cause an electric shock or fire.



- **Do not pull the plug out by the wire nor touch the plug with wet hands.**
  - This may cause an electric shock or fire.



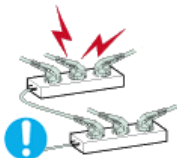
- **Use only a properly grounded plug and receptacle.**
  - An improper ground may cause electric shock or equipment damage.



- **Insert the power plug firmly so that it does not come loose.**
  - A bad connection may cause fire.



- **Do not excessively bend the plug and wire nor place heavy objects upon them, which could cause damage.**
  - This may cause an electric shock or fire.



- **Do not connect too many extension cords or plugs to an outlet.**
  - This may cause fire.



- **Do not disconnect the power cord while using the monitor.**
  - A surge may be caused by the separation and may damage the monitor.



- **Do not use the power cord when the connector or plug is dusty.**
  - If the connector or plug of the power cord is dusty, clean it with a dry cloth.
  - Using the power cord with a dusty plug or connector may cause an electric shock or fire.



## Installation



Be sure to contact an authorized [Service Center](#) when installing your set in a location with heavy dust, high or low temperatures, high humidity, and chemical substances, or where it will be operated for 24 hours continuously such as an airport, train station or etc.

Failure to do so may cause serious damage to your set.



### Put your monitor in a location with low humidity and a minimum of dust.

- Failure to do so may cause an electric shock or fire inside the monitor.



### Do not drop the monitor when moving it.

- This may cause damage to the product or human body.



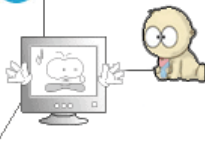
### Install the monitor base in a showcase or shelf so that the end of the base does not protrude from the showcase or shelf.

- Dropping the product may cause damage to the product or personal injury.



### Do not place the product on an unstable or small surface area.

- Place the product on an even, stable surface, as the product may fall and cause harm to someone walking by, specifically children.



### Do not place the product on the floor.

- Someone, specifically children could trip over it.



### Keep any flammable objects such as candles, insecticides or cigarettes away from the product.

- Otherwise, this may cause a fire.



### Keep any heating devices away from the power cable.

- A melted coating may lead to electric shock or fire.

### Do not install the product in places with poor ventilation, for instance, a bookshelf, closet, etc.

- Any increase in internal temperature may cause fire.





---

● **Set down the monitor carefully.**

- The monitor could be damaged or broken.



---

● **Do not place the monitor face down.**

- The CDT surface may be damaged.



---

● **Do not use the monitor without the monitor stand.**

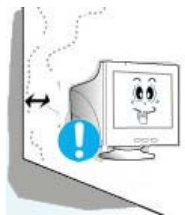
- It could break down or cause fire due to bad ventilation.
- If the monitor must be used without the supplied stand, take steps to insure proper ventilation.



---

● **When installing the product, make sure to keep it away from the wall (more than 10cm/4inch) for ventilation purposes.**

- Poor ventilation may cause an increase in the internal temperature of the product, resulting in a shortened component life and degraded performance.



---

● **Keep the plastic packaging (bag) out of children's reach.**

- The plastic packaging (bag) may cause suffocation if children play with it.



---

Notational

Power

Installation

**Clean**

Others

● **Clean**

When cleaning the monitor case or the surface of the CDT, wipe with a slightly moistened, soft fabric.

**Do not clean Flat monitor with water. Use a water-diluted mild detergent.**



(Some detergents contain significant amounts of alcohol-based solvents, which can damage (color change) or crack the monitor case. The antiglare/anti-static surface coating on the CDT may also be affected.)

Dilute the detergent (1:10 ratio) with water before using.

---





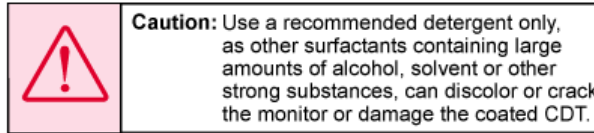
● **Do not spray water or detergent directly on the monitor.**

- This may cause damage, electric shock or fire.



● **Use the recommended detergent with a smooth cloth.**

- You may prevent the coated CDT from being damaged or the monitor cabinet from being dissolved, cracked or discolored.
- You may buy a recommended detergent at any Service Center.



● **If the connector between the plug and the pin is dusty or dirty, clean it properly with a dry cloth.**

- A dirty connector may cause an electric shock or fire.



● **Make sure to unplug the power cord before cleaning the product.**

- Otherwise, this may cause electric shock or fire.



● **Unplug the power cord from the power outlet and wipe the product using a soft, dry cloth.**

- Do not use any chemicals such as wax, benzene, alcohol, thinners, insecticide, air freshener, lubricant or detergent.



● **Contact the [Service Center](#) or [Customer Center](#) for interior cleaning once a year.**

- Keep the product's interior clean. Dust which has accumulated in the interior over an extended period of time may cause malfunction or fire.

[Notational](#)

[Power](#)

[Installation](#)

[Clean](#)

[Others](#)

● **Others**



● **Do not remove cover(or back).**

- This may cause an electric shock or fire.
- Refer servicing to qualified service personnel.

● **If your monitor does not operate normally - in particular, if there are any unusual sounds or smells coming from it - unplug it immediately and [contact an authorized dealer or service.](#)**





- This may cause an electric shock or fire.



- **Keep the product away from places exposed to oil, smoke or moisture; do not install inside a vehicle.**

- This may cause malfunction, an electric shock or fire.
- Especially avoid operating the monitor near water or outdoors where the monitor could be exposed to snow or rain.



- **If the monitor is dropped or the casing is damaged, turn the monitor off and unplug the power cord. Then contact the [Service Center](#).**

- The monitor may malfunction, causing an electric shock or fire.



- **Disconnect the plug from the outlet during storms or lightening or if it is not used for a long period of time.**

- Failure to do so may cause an electric shock or fire.



- **Do not try to move the monitor by pulling only the wire or the signal cable.**

- This may cause a breakdown, electric shock or fire due to damage to the cable.



- **Do not move the monitor right or left by pulling only the wire or the signal cable.**

- This may cause a breakdown, electric shock or fire due to damage to the cable.



- **Do not cover the vents on the monitor cabinet.**

- Bad ventilation may cause a breakdown or fire.



- **Do not place water containers, chemical products or small metal objects on the monitor.**

- This may cause malfunction, an electric shock or fire.
- If a foreign substance enters the monitor, unplug the power cord and contact the [Service Center](#).



- **Do not place any heavy objects on the monitor.**

- This may cause an electric shock or fire.





- **Keep the product away from combustible chemical sprays or inflammable substances.**

- This may cause an explosion or fire.



- **Never insert anything metallic into the monitor openings.**

- This may cause an electric shock, fire or injury.



- **Keep the monitor away from any magnetic substances.**

- This may cause discoloring or distortion of the image.



- **Watching the monitor continuously at a too close angle may result in eyesight damage.**



- **To ease eye strain, take at least a five-minute break after every hour of using the monitor.**



- **Do not install the product on an unstable, uneven surface or a location prone to vibrations.**

- Dropping the product may cause damage to the product or personal injury. Using the product in a location prone to vibrations may shorten the lifetime of the product or may catch fire.



- **When moving the monitor, turn off and unplug the power cord. Make sure that all cables, including the antenna cable and cables connected to other devices, are disconnected before moving the monitor.**

- Failure to disconnect a cable may damage it and lead to fire or an electric shock.



- **Place the product out of children's reach, as they could damage it by hanging onto it.**

- A falling product could cause physical damage even death.



- **When not using the product for an extended time period, keep the product unplugged**

- Otherwise, this may cause heat emission from the accumulated dirt or degraded insulation, leading to electric shock or fire.





• **Do not place children's favorite objects (or anything else that may be tempting) on the product.**

- Children may try to climb on the product to retrieve an object. The product could fall, causing physical damage or even death.





Unpacking

Front

Rear

Bottom

Please make sure the following items are included with your monitor.  
If any items are missing, [contact your dealer](#).  
[Contact a local dealer](#) to buy optional items.

● Unpacking

● Monitor and Stand



(Some models include a stand attached.)

● Manual



**Quick Setup Guide**



**Warranty Card**  
(Not available in all locations)



**User's Guide,  
Monitor Driver,  
Natural Color software**  
(Not available in all locations)



---

● Cable



Power Cord

---

● Stand



Stand

---

Unpacking

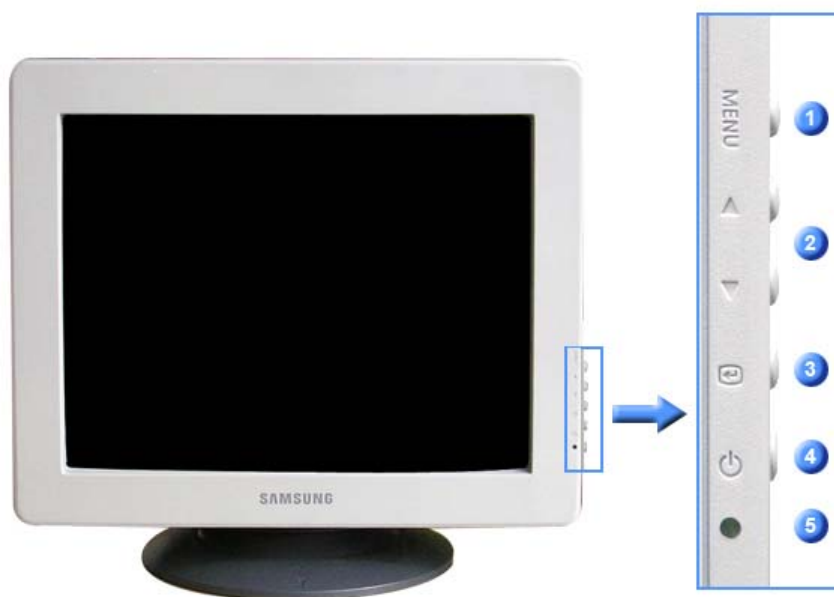
Front

Rear

Bottom

---

● Front



- |   |                             |                                                                                                              |
|---|-----------------------------|--------------------------------------------------------------------------------------------------------------|
| 1 | <b>Menu button [MENU]</b>   | Opens the OSD menu. Also used to exit the OSD menu or return to the previous menu.                           |
| 2 | <b>Adjust buttons [▲/▼]</b> | These buttons allow you to highlight and adjust items in the menu.                                           |
| 3 | <b>Enter button [⏏]</b>     | Used to select the OSD menu.                                                                                 |
| 4 | <b>Power button [⏻]</b>     | Use this button for turn the monitor on and off.                                                             |
| 5 | <b>Power indicator</b>      | This light glows green during normal operation, and blinks green once as the monitor saves your adjustments. |





See [PowerSaver](#) described in the manual for further information regarding power saving functions. For energy conservation, turn your monitor OFF when it is not needed, or when leaving it unattended for long periods.

Unpacking

Front

Rear

Bottom

## Rear



(The configuration at the back of the monitor may vary from product to product.)

- 1 Power port** Connect the power cord for your monitor to the power port on the back of the monitor.
- 2 Signal Cable** Connect the signal cable to the video port on your computer (video board, video card, or graphics card).



See [Connecting the Monitor](#) for further information regarding cable connections.

Unpacking

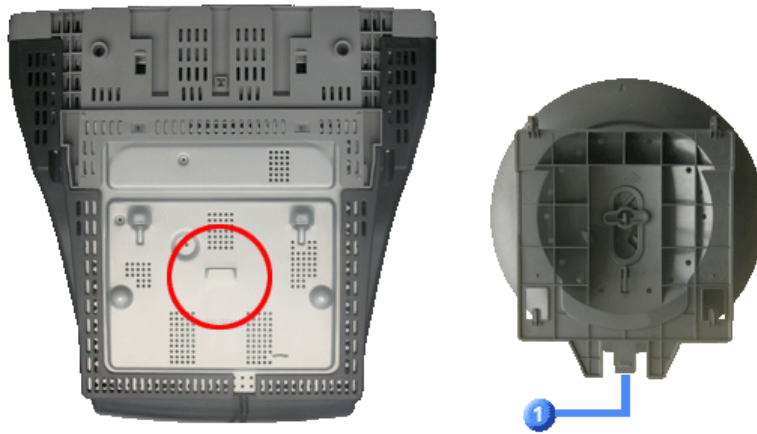
Front

Rear

Bottom

## Bottom





1

### Tilt/Swivel Base

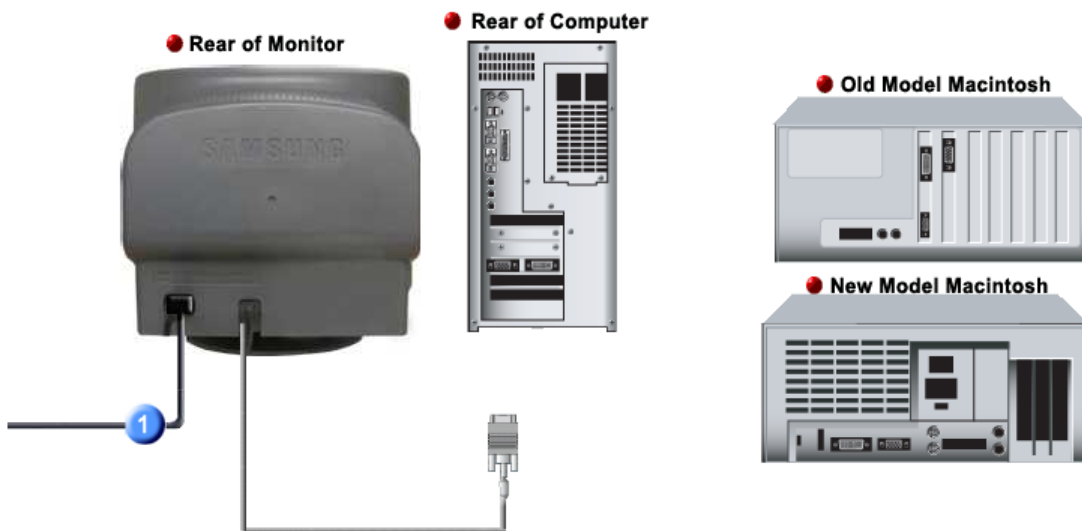
You can separate the base from the monitor.






Connecting the Monitor | Base Installation | Installing the Monitor Driver (Automatic) | Installing the Monitor Driver (Manual) | Natural Color |

## Connecting the Monitor



1. Connect the power cord for your monitor to the power port on the back of the monitor. Plug the power cord for the monitor into a nearby outlet.
- 2-1. Connecting to a computer  
Connect the signal cable to the 15-pin, D-Sub connector on the back of your computer.  

- 2-2. Connecting to a new Macintosh  
Connect the monitor to the Macintosh computer using the D-Sub connection cable.
- 2-3. Connecting to an old Macintosh  
Connect your monitor to the Macintosh using the adapter for Macintosh (sold separately).
3. Turn on your computer and monitor. If your monitor displays an image, installation is complete.



## Base Installation

[Tilt/Swivel Base](#) | [Attaching and Removing the Base](#)

### Tilt/Swivel Base

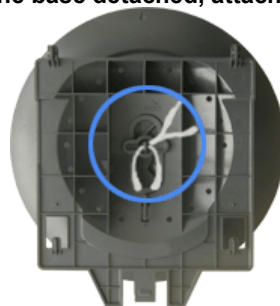
With the built-in pedestal, you can tilt and/or swivel the monitor for the most comfortable viewing angle.



The base is detachable.

### Attaching and Removing the Base

If your monitor was supplied with the base detached, attach the base as follows.



Remove the twist-tie before attaching the base to the monitor.





### Attaching the Base

1. Place the monitor upside-down on a flat work surface.
2. Align the tabs on the base with the corresponding slots on the bottom of the monitor.
3. Press the base onto the monitor until the tabs are fully engaged in the slots.
4. Push the base toward the front of the monitor until the release latch clicks into the locked position.

\* Do not bend the snap.

### Removing the Base

5. Squeeze and pull up on the release latch on the base.
6. Push the base toward the back of the monitor and lift up to remove the base.



The base will align with the monitor slots in only one position.

Connecting the Monitor

Base Installation

Installing the Monitor Driver  
(Automatic)

Installing the Monitor Driver  
(Manual)

Natural Color

### Installing the Monitor Driver(Automatic)



**When prompted by the operating system for the monitor driver, insert the CD-ROM included with this monitor. Driver installation is slightly different from one operating system to another. Follow the directions appropriate for the operating system you have.**

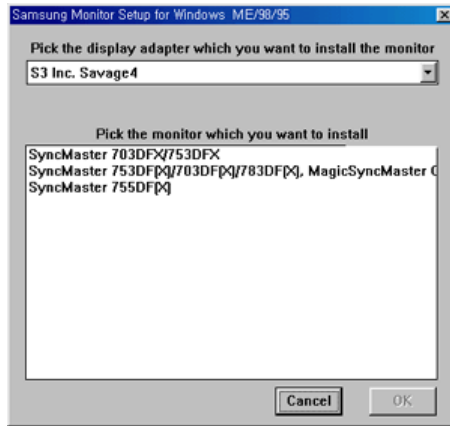
Prepare a blank disk and download the driver program file at the Internet web site shown here.

- Internet web site : <http://www.samsung.com/> (Worldwide)  
<http://www.samsung.com/monitor> (U.S.A)  
<http://www.sec.co.kr/monitor> (Korea)  
<http://www.samsungmonitor.com.cn/> (China)

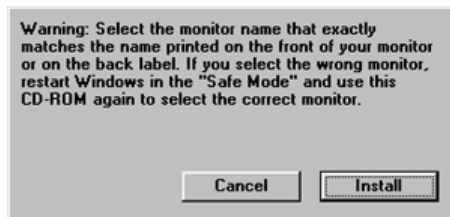
### Windows ME

1. Insert CD into the CD-ROM drive.
2. Click "**Windows ME Driver**".
3. Choose your monitor model in the model list, then click the "**OK**" button.





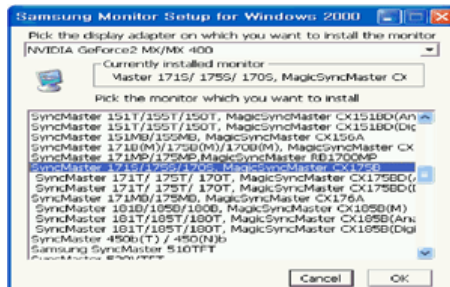
4. Click the **"Install"** button in the **"Warning"** window.



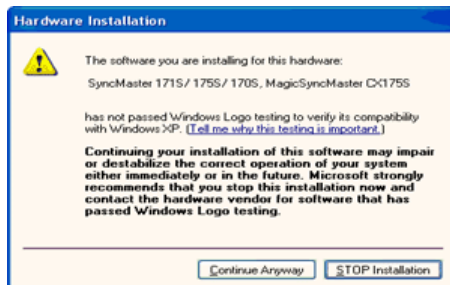
5. Monitor driver installation is completed.

## ● Windows XP/2000

1. Insert CD into the CD-ROM drive.
2. Click **"Windows XP/2000 Driver"**
3. Choose your monitor model in the model list, then click the **"OK"** button.



4. If you can see following message window, then click the **"Continue Anyway"** button. Then click **"OK"** button.



This monitor driver is under certified MS logo and this installation doesn't damage your system. The certified driver will be posted on Samsung Monitor homepage.  
<http://www.samsung.com/>.

5. Monitor driver installation is completed.



## Installing the Monitor Driver(Manual)

Windows XP | Windows 2000 | Windows Me | Windows NT | Linux



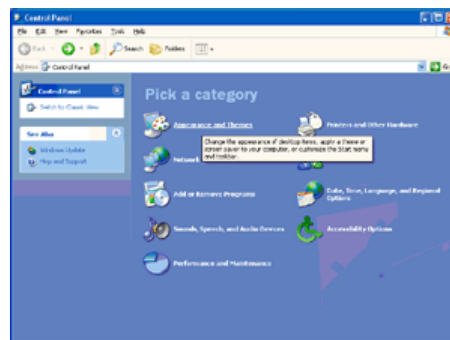
When prompted by the operating system for the monitor driver, insert the CD-ROM included with this monitor. Driver installation is slightly different from one operating system to another. Follow the directions appropriate for the operating system you have.

Prepare a blank disk and download the driver program file at the Internet web site shown here.

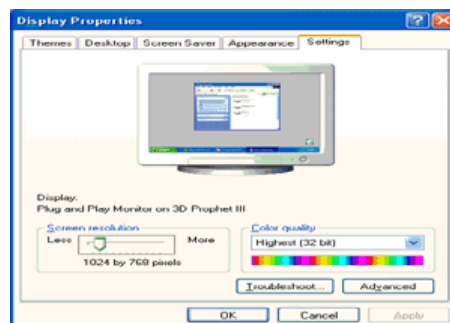
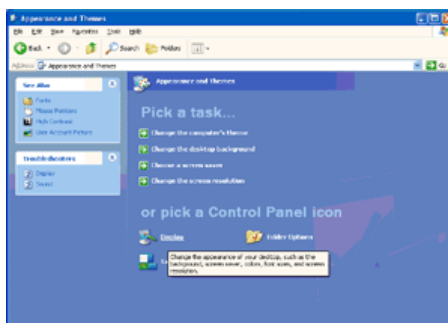
- Internet web site : <http://www.samsung.com/> (Worldwide)  
<http://www.samsung.com/monitor> (U.S.A)  
<http://www.sec.co.kr/monitor> (Korea)  
<http://www.samsungmonitor.com.cn/> (China)

## Microsoft® Windows® XP Operating System

1. Insert CD into the CD-ROM driver.
2. Click **"Start" —> "Control Panel"** then click the **"Appearance and Themes"** icon.

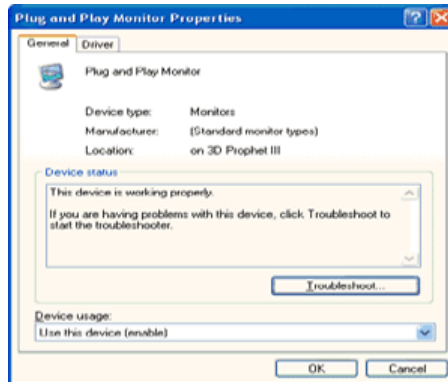
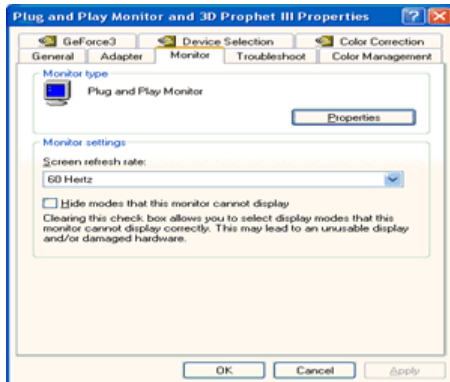


3. Click **"Display"** icon and choose the **"Settings"** tab then click **"Advanced..."**.

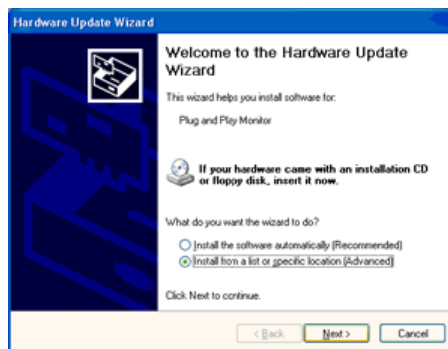
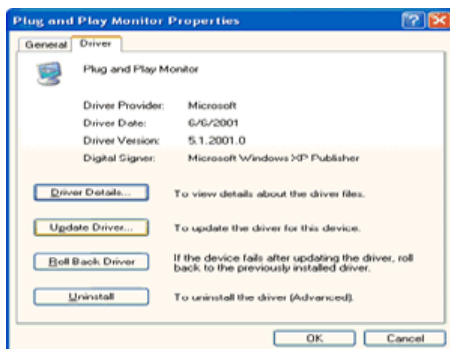


4. Click the **"Properties"** button on the **"Monitor"** tab and select **"Driver"** tab.

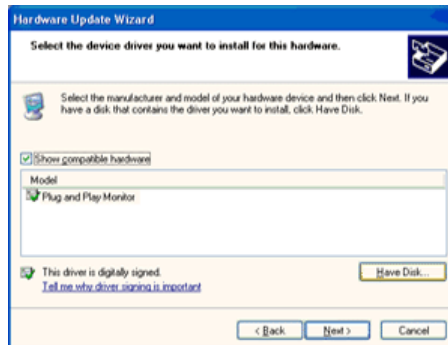
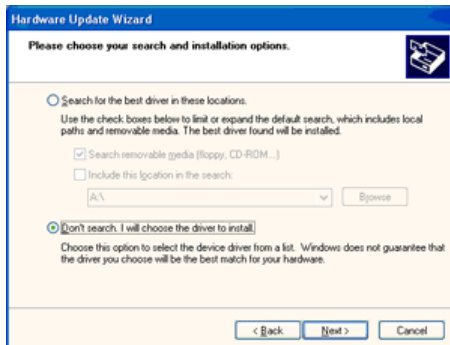




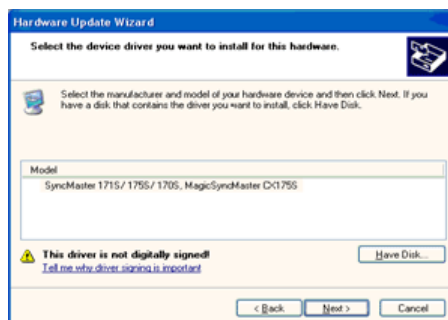
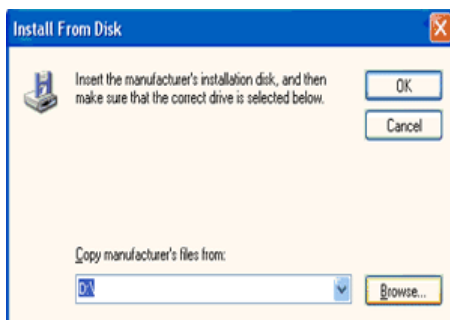
5. Click **"Update Driver.."** and select **"Install from a list or.."** then click **"Next"** button.



6. Select **"Don't search ,I will.."** then click **"Next"** and then click **"Have disk"**.

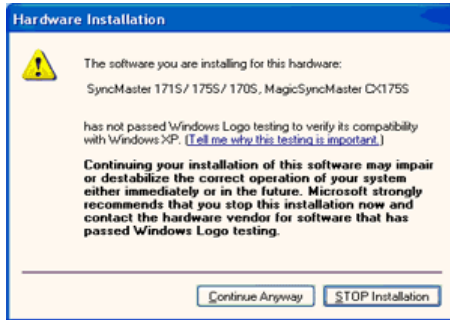


7. Click the **"Browse"** button then choose A:(D:\Driver) and choose your monitor model in the model list and click the **"Next"** button.



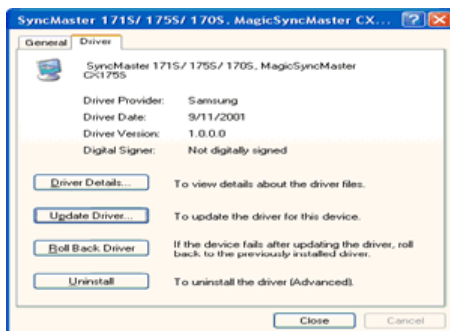
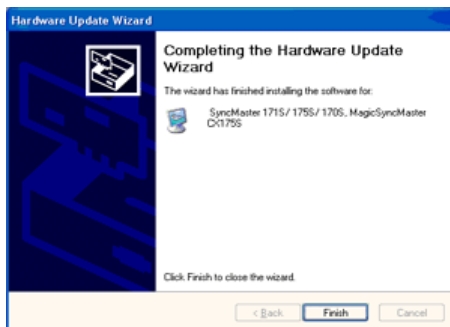
8. If you can see following message window, then click the **"Continue Anyway"** button. Then click **"OK"** button.





This monitor driver is under certified MS logo and this installation doesn't damage your system. The certified driver will be posted on Samsung Monitor homepage.  
<http://www.samsung.com/>.

9. Click the "Close" button, then click "OK" button continually.



10. Monitor driver installation is completed.

## Microsoft® Windows® 2000 Operating System



When you can see "Digital Signature Not Found" on your monitor, follow these steps.

1. Choose "OK" button on the "Insert disk" window.
2. Click the "Browse" button on the "File Needed" window.
3. Choose A:(D:\Driver) then click the "Open" button and then click "OK" button.



How to install

1. Click "Start", "Setting", "Control Panel".
2. Double click the "Display" Icon.
3. Choose the "Settings" tab and then click "Advanced..".
4. Choose "Monitor".
  - Case1: If the "Properties" button is inactive, it means your monitor is properly configured. Please stop installation
  - Case2: If the "Properties" button is active, click the "Properties" button then follow next steps continually.
5. Click "Driver" and then click on "Update Driver.." then click on the "Next" button.
6. Choose "Display a list of the known drivers for this device so that I can choose a specific driver" then click "Next" and then click "Have disk".
7. Click the "Browse" button then choose A:(D:\Driver).
8. Click the "Open" button, then click "OK" button.
9. Choose your monitor model and click the "Next" button then click "Next" button.
10. Click the "Finish" button then the "Close" button.



If you can see the "**Digital Signature Not Found**" window then click the "**Yes**" button.  
And click the "**Finish**" button then the "**Close**" button.


---

#### ● Microsoft® Windows® Millennium Operating System

1. Click "**Start**", "**Setting**", "**Control Panel**".
2. Double click "**Display**" icon.
3. Select the "**Settings**" tab and click "**Advanced Properties**" button.
4. Select the "**Monitor**" tab.
5. Click the "**Change**" button in the "**Monitor Type**" area.
6. Choose "**Specify the location of the driver**".
7. Choose "**Display a list of all the driver in a specific location..**" then click "**Next**" button.
8. Click the "**Have Disk**" button
9. Specify A:\(D:\driver) then click "**OK**" button.
10. Select "**Show all devices**" and choose the monitor that corresponds to the one you connected to your computer and click "**OK**".
11. Continue choosing "**Close**" button and "**OK**" button until you close the Display Properties dialogue box.

---

#### ● Microsoft® Windows® NT Operating System

1. Click **Start**, **Settings**, **Control Panel**, and then double-click **Display** icon.
  2. In Display Registration Information window, click Settings Tab and then click **All Display Modes**.
  3. Select a mode that you wish to use (Resolution, Number of colors and Vertical frequency) and then click **OK**.
  4. Click **Apply** button if you see the screen working normally after clicking **Test**. If the screen is not normal, change to a different mode (lower mode of resolution, colors or frequency).
-  If there is no Mode at **All Display Modes**, select the level of resolution and vertical frequency by referring to the [Preset Timing Modes](#) in the user guide.

---

#### ● Linux Operating System

To execute X-Window, you need to make the X86Config file, which is a type of system setting file.

1. Press Enter at the first and the second screen after executing the X86Config file.
2. The third screen is for **setting your mouse**.
3. Set a mouse for your computer.
4. The next screen is for **selecting a keyboard**.
5. Set a Keyboard for your computer.
6. The next screen is for **setting your monitor**.
7. First of all, set a **horizontal frequency** for your monitor. (You can enter the frequency directly.)
8. Set a **vertical frequency** for your monitor. (You can enter the frequency directly.)
9. Enter the **model name of your monitor**. This information will not affect the actual execution of X-Window.
10. You have **finished** setting up your monitor.  
**Execute** X-Window after setting other requested hardware.

#### ● Natural Color

##### ● Natural Color Software Program





One of the recent problems in using a computer is that the color of the images printed out by a printer or other images scanned by a scanner or a digital camera are not the same as those shown on the monitor.

The Natural Color S/W is the very solution for this problem. It is a color administration system developed by Samsung Electronics in association with Korea Electronics & Telecommunications Research Institute (ETRI).

This system is available only for Samsung monitors and makes the color of the images on the monitor the same as the printed or scanned images.

For more information, refer to Help (F1) in the software program.

#### **How to install the Natural Color software**

Insert the CD included with the Samsung monitor into the CD-ROM Drive. Then, the initial screen of the program Natural Color will be executed. Click Natural Color on the initial screen to install the Natural Color software.

To install the program manually, insert the CD included with the Samsung monitor into the CD-ROM Drive, click the **[Start]** button of Windows and then select **[Execute]**.

Enter D:\color\eng\setup.exe and then press the **<Enter>** key.

(If the drive where the CD is inserted is not D:\, enter the applicable drive.)

#### **How to delete the Natural Color software program**

Select **[Setting]/[Control Panel]** on the **[Start]** menu and then double-click **[Add/Delete a program]**.

Select Natural Color from the list and then click the **[Add/Delete]** button.





User Control Buttons | Direct-Access Features | OSD Functions |

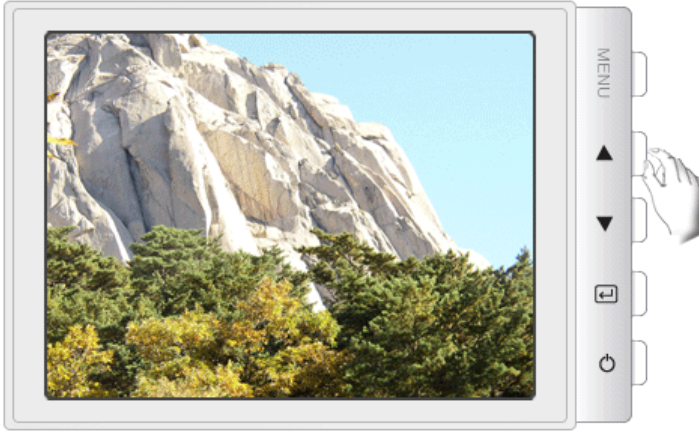



- 1 **[MENU]** Opens the OSD menu. Also use to exit the OSD menu or return to the previous menu.
- 2 **[▲/▼]** These buttons allow you to highlight and adjust items in the menu.
- 3 **[P]** Use to select the OSD menu.

User Control Buttons | Direct-Access Features | OSD Functions |

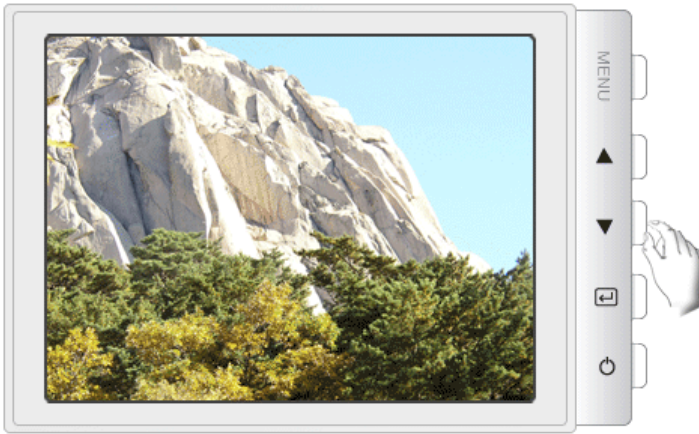
## ➔ Brightness






Menu	Description
	When OSD is not on the screen, push the button to adjust brightness.

**➔ Contrast**



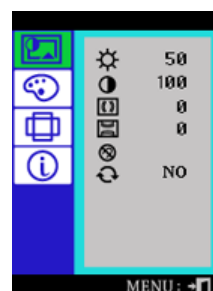
Menu	Description
	When OSD is not on the screen, push the button to adjust Contrast.



Select an icon that you want to know from the OSD menu to display a text or animation explanation of that icon.

[illegible]




















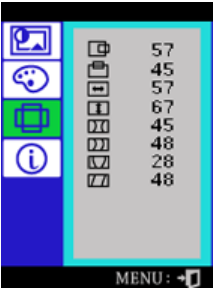
Menu	Description	Play/Stop
	<p>You can use the on-screen menus to change the brightness according to personal preference.</p> <p><b>Direct Access Feature</b> : When OSD is not on the screen, push the button to adjust brightness.</p>	
	<p>You can use the on-screen menus to change the contrast according to personal preference.</p> <p><b>Direct Access Feature</b> : When OSD is not on the screen, push the button to adjust Contrast.</p>	
	A "Moiré" pattern can appear on your screen, looking like a series of concentric circles or arcs. To eliminate this pattern, use the horizontal moire adjustments.	
	A "Moiré" pattern can appear on your screen, looking like a series of concentric circles or arcs. To eliminate this pattern, use the vertical moire adjustments.	
	The Degauss feature will remove color impurities caused by magnetic fields.	
	<p>Use the recall feature to reset these monitor settings to their original levels: Position, Size, Pincushion, Trapezoid, Parallelogram, Pinbalance, Rotation, H-Moire, and V-Moire.</p> <p><b>Note:</b> If you have selected "Yes", all settings listed above will be reset. All other settings will remain the same.</p>	

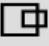















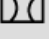


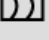





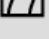




Menu	Description	Play/Stop
	Color temperature is a measure of the 'warmth' of the image colors. (6500K / 9300K)	 
	Use to adjust the monitor color setting.(Red)	 
	Use to adjust the monitor color setting.(Green)	 
	Use to adjust the monitor color setting.(Blue)	 
<b>sRGB</b>	Standard Red Green Blue (sRGB) is a defined default color space. If a monitor, printer and scanner are all calibrated to the sRGB color characteristics, then you can find color matching from each peripheral. When the monitor is in the sRGB mode, Brightness / Contrast adjustment is not available.	 



Menu	Description	Play/Stop
	Follow these instructions to change the horizontal position of the monitor's entire display.	 
	Follow these instructions to change the vetical position of the	



	monitor's entire display.	 
	Follow these instructions to change the horizontal size of the monitor's entire display.	 
	Follow these instructions to change the vertical size of the monitor's entire display.	 
	Adjust the pincushion setting when the sides of the display are bowed in or bowed out.	 
	Adjust the pinbalance setting when the sides of the display are bowed towards the left or right.	 
	Adjust the trapezoid setting when the top or bottom of the display is too large or small.	 
	Adjust the parallelogram setting when the display is leaning left or right.	 



Provides information about the display timing and sync signals polarity(user mode).  
**Note:** These screens do not allow any changes to the settings, they are for information only.







User Control Buttons | Direct-Access Features | OSD Functions |

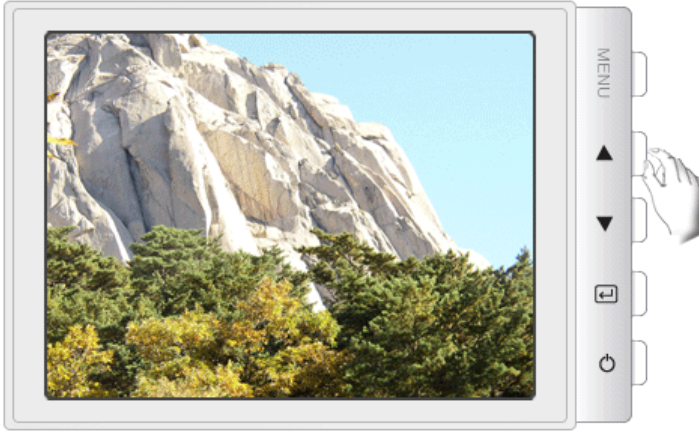



- 1 **[MENU]** Opens the OSD menu. Also use to exit the OSD menu or return to the previous menu.
- 2 **[▲/▼]** These buttons allow you to highlight and adjust items in the menu.
- 3 **[P]** Use to select the OSD menu.

User Control Buttons | Direct-Access Features | OSD Functions |

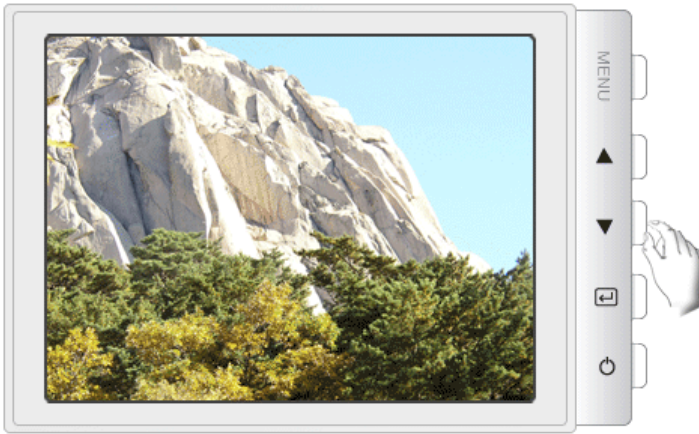
## ➔ Brightness






Menu	Description
	When OSD is not on the screen, push the button to adjust brightness.

**➔ Contrast**



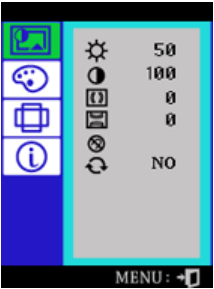
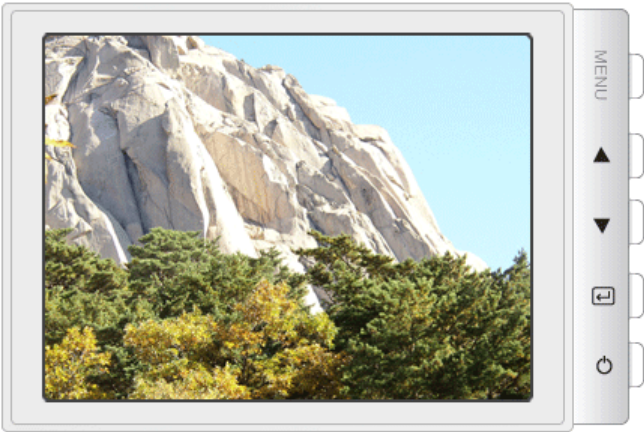
Menu	Description
	When OSD is not on the screen, push the button to adjust Contrast.



Select an icon that you want to know from the OSD menu to display a text or animation explanation of that icon.

[illegible]




















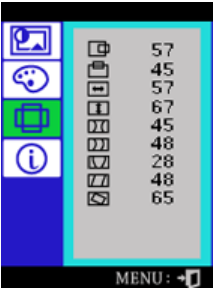
Menu	Description	Play/Stop
	<p>You can use the on-screen menus to change the brightness according to personal preference.</p> <p><b>Direct Access Feature</b> : When OSD is not on the screen, push the button to adjust brightness.</p>	
	<p>You can use the on-screen menus to change the contrast according to personal preference.</p> <p><b>Direct Access Feature</b> : When OSD is not on the screen, push the button to adjust Contrast.</p>	
	A "Moiré" pattern can appear on your screen, looking like a series of concentric circles or arcs. To eliminate this pattern, use the horizontal moire adjustments.	
	A "Moiré" pattern can appear on your screen, looking like a series of concentric circles or arcs. To eliminate this pattern, use the vertical moire adjustments.	
	The Degauss feature will remove color impurities caused by magnetic fields.	
	<p>Use the recall feature to reset these monitor settings to their original levels: Position, Size, Pincushion, Trapezoid, Parallelogram, Pinbalance, Rotation, H-Moire, and V-Moire.</p> <p><b>Note:</b> If you have selected "Yes", all settings listed above will be reset. All other settings will remain the same.</p>	











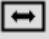





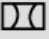


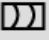


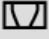


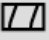


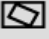




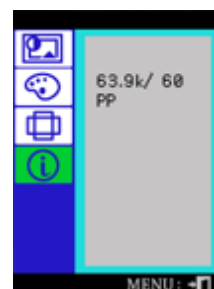
Menu	Description	Play/Stop
	Color temperature is a measure of the 'warmth' of the image colors. (6500K / 9300K)	 
	Use to adjust the monitor color setting.(Red)	 
	Use to adjust the monitor color setting.(Green)	 
	Use to adjust the monitor color setting.(Blue)	 
<b>sRGB</b>	Standard Red Green Blue (sRGB) is a defined default color space. If a monitor, printer and scanner are all calibrated to the sRGB color characteristics, then you can find color matching from each peripheral. When the monitor is in the sRGB mode, Brightness / Contrast adjustment is not available.	 



Menu	Description	Play/Stop
	Follow these instructions to change the horizontal position of the monitor's entire display.	 
	Follow these instructions to change the vetical position of the	



	monitor's entire display.	 
	Follow these instructions to change the horizontal size of the monitor's entire display.	 
	Follow these instructions to change the vertical size of the monitor's entire display.	 
	Adjust the pincushion setting when the sides of the display are bowed in or bowed out.	 
	Adjust the pinbalance setting when the sides of the display are bowed towards the left or right.	 
	Adjust the trapezoid setting when the top or bottom of the display is too large or small.	 
	Adjust the parallelogram setting when the display is leaning left or right.	 
	Adjust the rotation setting when the entire display is tilted left or right.	 



Provides information about the display timing and sync signals polarity(user mode).

**Note:** These screens do not allow any changes to the settings, they are for information only.







Before calling for service, check the information in this section to see if you can remedy any problems yourself. If you do need assistance, please call [the phone number on the Information section](#) or [contact your dealer](#).

Symptom	Check List	Solutions
No images on the screen. I cannot turn on the monitor.	Is the power cord connected properly?	Check the power cord connection and supply.
	Can you see " ? " on the screen?	Check the signal cable connection.
	If the power is on, reboot the computer to see the initial screen(the login screen), which can be seen.	If the initial screen (the login screen) appears, boot the computer in the applicable mode (the safe mode for Windows ME/XP/2000) and then change the frequency of the video card. (Refer to the <a href="#">Preset Timing Modes</a> )  Note: If the initial screen (the login screen) does not appear, <a href="#">contact a service center or your dealer</a> .
	Can you see " Hz ? " on the screen?	You can see this message when the signal from the video card exceeds the maximum resolution and frequency that the monitor can properly handle.  Adjust the maximum resolution and frequency that the monitor can handle properly.
	There is no image on the screen. Is the power indicator on the monitor blinking at 1 second intervals?	The monitor is in PowerSaver mode.  Press any key on the keyboard to activate the monitor and restore the image on the screen.
The image on the screen is shaking.	Check the monitor configuration to see if it is in Interlace Mode. (Interlace Mode: Vertical frequency 43Hz, 87Hz(i), etc)	Change the vertical frequency to Non-Interlace mode by referring to the video card manual.
	Are there any magnetic products such as a power adapter, speaker or a high	Move the monitor away from anything that can create a strong magnetic field.



	voltage wire near by?	
	Is the voltage stable?	The screen image can appear to shake or vibrate at a particular time of day due to low supply voltage.
	The screen image can also appear to shake or vibrate if there is a problem with the video card or the computer's main board.	
The screen shows strange colors or just black and white.	Is the screen displaying only one color as if looking at the screen through a cellophane paper?	Check the signal cable connection. Make sure the video card is fully inserted in it's slot.
	Have the screen colors become strange after running a program or due to a crash between applications?	Reboot the computer.
	Has the video card been set properly?	Set the video card by referring to the video card manual.
The screen suddenly has become unbalanced.	Have you changed the video card or the driver?	Adjust screen image position and size using the OSD.
	Have you adjusted the resolution or frequency on the monitor?	Adjust the resolution and frequency of the video card. (Refer to the <a href="#">Preset Timing Modes</a> ).
	The screen can be unbalanced due to the cycle of the video card signals. Readjust Position by referring to the OSD.	
The screen is out of focus or OSD cannot be adjusted.	Have you adjusted the resolution or frequency on the monitor?	Adjust the resolution and frequency of the video card. (Refer to the <a href="#">Preset Timing Modes</a> ).
The screen is partially distorted.	Are there any magnetic products such as an adapter, speaker or a high voltage wire near the monitor?	Enter the OSD and perform a "⊗".
		Keep the monitor away from any magnetic products.
LED is blinking but no images on the screen.	Is the frequency properly adjusted when checking the Display Timing on the menu?	Adjust the frequency properly by referring to the video card manual and the <a href="#">Preset Timing Modes</a> .
		(The maximum frequency per resolution may differ from product to product.)
There are only 16 colors shown on the screen. The screen colors have changed after changing the video card.	Have the Windows colors been set properly?	Windows ME/2000/XP: Set the colors properly at the <b>Control Panel → Display → Settings</b> .
	Has the video card been set properly?	Set the video card by referring to the video card manual.
There is a message that reads "Unrecognized monitor, Plug & Play (VESA DDC) monitor found".	Have you installed the monitor driver?	Install the monitor driver according to the <a href="#">Driver Installation Instructions</a> .
	See the video card manual to see if the Plug & Play (VESA DDC) function can be supported.	Install the monitor driver according to the <a href="#">Driver Installation Instructions</a> .



#### Check the following items if there is trouble with the monitor.

1. Check if the power cord and the video cables are properly connected to the computer.
2. Check if the computer beeps more than 3 times when booting.  
(If it does, request an after-service for the main board of the computer.)
3. If you installed a new video card or if you assembled the PC, check if the installed adapter (video) driver and the monitor driver.



4. Check if the scanning ratio of the video screen is set at 50Hz ~ 120 Hz.  
(Do not exceed 85 Hz when using the maximum resolution.)
5. If you have problems in installing the adapter (video) driver, boot the computer in Safe Mode, remove the Display Adapter at the "**Control Panel→System→Device Administrator**" and then reboot the computer to reinstall the adapter (video) driver.



If problems repeatedly occur, [contact an authorized service center](#).

[Check List](#)

[Q & A](#)

[Self-Test Feature Check](#)

#### Q & A

Question	Answer
How can I change the frequency?	Frequency can be changed by reconfiguring the video card.  Note that video card support can vary, depending on the version of the driver used. (Refer to the computer or the video card manual for details.)
How can I adjust the resolution?	Windows ME/XP/2000 : Set the resolution at the <b>Control Panel→Display→Settings</b> .  * Contact the video card manufacturer for details.
How can I set the Power Saving function?	Windows ME/XP/2000 : Set the function at BIOS-SETUP of the computer or the screen saver. (Refer to Windows/Computer Manual).
The monitor makes a sound when it is turned on.	This is normal as some sound may be generated when the metal case and the electromagnet, which are installed to block any electromagnetic waves, interact with each other.
How can I clean the outer case/Picture tube?	Disconnect the power cord and then clean the monitor with a soft cloth, using either a cleaning solution or plain water.  Do not leave any remains of the detergent nor scratch the case. Do not allow any water to go inside the monitor.

[Check List](#)

[Q & A](#)

[Self-Test Feature Check](#)

#### Self-Test Feature Check

[Self-Test Feature Check](#) | [Warning Messages](#) | [Environment](#) | [Useful Tips](#)

**Your monitor provides a self test feature that allows you to check whether your monitor is functioning properly.**

#### Self-Test Feature Check

1. Turn off both your computer and the monitor.
2. Unplug the video cable from the back of the computer.
3. Turn on the monitor.  
If the monitor is functioning properly, you will see a box in the illustration below.





This box appears during normal operation if the video cable becomes disconnected or damaged.

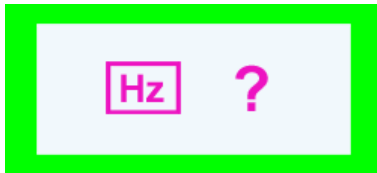
4. Turn off your monitor and reconnect the video cable; then turn on both your computer and the monitor.

If your monitor screen remains blank after using the previous procedure, check your video controller and computer system; your monitor is functioning properly.

---

### ● Warning Messages

If there is something wrong with the input signal, the message below appears on the screen or the screen goes blank although the power indicator LED is still on. The message may indicate that the monitor is out of scan range or that you need to check the signal cable.



---

### ● Environment

**The location and the position of the monitor may influence the quality and other features of the monitor.**

1. If there are any sub woofer speakers near the monitor, unplug and relocate the woofer to another room.
2. Remove all electronic devices such as radios, fans, clocks and telephones that are within 3 feet (one meter) of the monitor.
3. Degauss the monitor if any devices were removed from the area.

---

### ● Useful Tips

- A monitor recreates visual signals received from the computer. Therefore, if there is trouble with the computer or the video card, this can cause the monitor to become blank, have poor coloring, noise, unavailable video mode, etc. In this case, first check the source of the problem, and then contact a service center or your dealer.
- **Judging the monitor's working condition**

If there is no image on the screen or a "Hz ?" message comes up, disconnect the cable from the computer while the monitor is still powered on.

- If there is a message coming up on the screen or if the screen goes white, this means the monitor is in working condition.
- In this case, check the computer for trouble.





## Check List

## Q & A

## Self-Test Feature Check



Before calling for service, check the information in this section to see if you can remedy any problems yourself. If you do need assistance, please call [the phone number on the Information section](#) or [contact your dealer](#).

Symptom	Check List	Solutions
No images on the screen. I cannot turn on the monitor.	Is the power cord connected properly?	Check the power cord connection and supply.
	Can you see " ? " on the screen?	Check the signal cable connection.
	If the power is on, reboot the computer to see the initial screen(the login screen), which can be seen.	If the initial screen (the login screen) appears, boot the computer in the applicable mode (the safe mode for Windows ME/XP/2000) and then change the frequency of the video card. (Refer to the <a href="#">Preset Timing Modes</a> )  Note: If the initial screen (the login screen) does not appear, <a href="#">contact a service center or your dealer</a> .
	Can you see " Hz ? " on the screen?	You can see this message when the signal from the video card exceeds the maximum resolution and frequency that the monitor can properly handle.  Adjust the maximum resolution and frequency that the monitor can handle properly.
	There is no image on the screen. Is the power indicator on the monitor blinking at 1 second intervals?	The monitor is in PowerSaver mode.  Press any key on the keyboard to activate the monitor and restore the image on the screen.
The image on the screen is shaking.	Check the monitor configuration to see if it is in Interlace Mode. (Interlace Mode: Vertical frequency 43Hz, 87Hz(i), etc)	Change the vertical frequency to Non-Interlace mode by referring to the video card manual.
	Are there any magnetic products such as a power adapter, speaker or a high	Move the monitor away from anything that can create a strong magnetic field.



	voltage wire near by?	
	Is the voltage stable?	The screen image can appear to shake or vibrate at a particular time of day due to low supply voltage.
	The screen image can also appear to shake or vibrate if there is a problem with the video card or the computer's main board.	
The screen shows strange colors or just black and white.	Is the screen displaying only one color as if looking at the screen through a cellophane paper?	Check the signal cable connection. Make sure the video card is fully inserted in it's slot.
	Have the screen colors become strange after running a program or due to a crash between applications?	Reboot the computer.
	Has the video card been set properly?	Set the video card by referring to the video card manual.
The screen suddenly has become unbalanced.	Have you changed the video card or the driver?	Adjust screen image position and size using the OSD.
	Have you adjusted the resolution or frequency on the monitor?	Adjust the resolution and frequency of the video card. (Refer to the <a href="#">Preset Timing Modes</a> ).
	The screen can be unbalanced due to the cycle of the video card signals. Readjust Position by referring to the OSD.	
The screen is out of focus or OSD cannot be adjusted.	Have you adjusted the resolution or frequency on the monitor?	Adjust the resolution and frequency of the video card. (Refer to the <a href="#">Preset Timing Modes</a> ).
The screen is partially distorted.	Are there any magnetic products such as an adapter, speaker or a high voltage wire near the monitor?	Enter the OSD and perform a "⊗".
		Keep the monitor away from any magnetic products.
LED is blinking but no images on the screen.	Is the frequency properly adjusted when checking the Display Timing on the menu?	Adjust the frequency properly by referring to the video card manual and the <a href="#">Preset Timing Modes</a> .
		(The maximum frequency per resolution may differ from product to product.)
There are only 16 colors shown on the screen. The screen colors have changed after changing the video card.	Have the Windows colors been set properly?	Windows ME/2000/XP: Set the colors properly at the <b>Control Panel → Display → Settings</b> .
	Has the video card been set properly?	Set the video card by referring to the video card manual.
There is a message that reads "Unrecognized monitor, Plug & Play (VESA DDC) monitor found".	Have you installed the monitor driver?	Install the monitor driver according to the <a href="#">Driver Installation Instructions</a> .
	See the video card manual to see if the Plug & Play (VESA DDC) function can be supported.	Install the monitor driver according to the <a href="#">Driver Installation Instructions</a> .



#### Check the following items if there is trouble with the monitor.

1. Check if the power cord and the video cables are properly connected to the computer.
2. Check if the computer beeps more than 3 times when booting.  
(If it does, request an after-service for the main board of the computer.)
3. If you installed a new video card or if you assembled the PC, check if the installed adapter (video) driver and the monitor driver.



4. Check if the scanning ratio of the video screen is set at 50Hz ~ 160 Hz.  
(Do not exceed 60 Hz when using the maximum resolution.)
5. If you have problems in installing the adapter (video) driver, boot the computer in Safe Mode, remove the Display Adapter at the "**Control Panel→System→Device Administrator**" and then reboot the computer to reinstall the adapter (video) driver.



If problems repeatedly occur, [contact an authorized service center](#).

[Check List](#)

[Q & A](#)

[Self-Test Feature Check](#)

#### Q & A

Question	Answer
How can I change the frequency?	Frequency can be changed by reconfiguring the video card.  Note that video card support can vary, depending on the version of the driver used. (Refer to the computer or the video card manual for details.)
How can I adjust the resolution?	Windows ME/XP/2000 : Set the resolution at the <b>Control Panel→Display→Settings</b> .  * Contact the video card manufacturer for details.
How can I set the Power Saving function?	Windows ME/XP/2000 : Set the function at BIOS-SETUP of the computer or the screen saver. (Refer to Windows/Computer Manual).
The monitor makes a sound when it is turned on.	This is normal as some sound may be generated when the metal case and the electromagnet, which are installed to block any electromagnetic waves, interact with each other.
How can I clean the outer case/Picture tube?	Disconnect the power cord and then clean the monitor with a soft cloth, using either a cleaning solution or plain water.  Do not leave any remains of the detergent nor scratch the case. Do not allow any water to go inside the monitor.

[Check List](#)

[Q & A](#)

[Self-Test Feature Check](#)

#### Self-Test Feature Check

[Self-Test Feature Check](#) | [Warning Messages](#) | [Environment](#) | [Useful Tips](#)

**Your monitor provides a self test feature that allows you to check whether your monitor is functioning properly.**

#### Self-Test Feature Check

1. Turn off both your computer and the monitor.
2. Unplug the video cable from the back of the computer.
3. Turn on the monitor.  
If the monitor is functioning properly, you will see a box in the illustration below.





This box appears during normal operation if the video cable becomes disconnected or damaged.

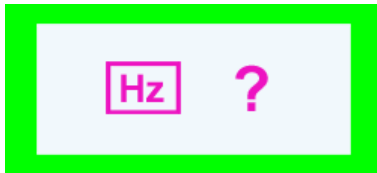
4. Turn off your monitor and reconnect the video cable; then turn on both your computer and the monitor.

If your monitor screen remains blank after using the previous procedure, check your video controller and computer system; your monitor is functioning properly.

---

### ● Warning Messages

If there is something wrong with the input signal, the message below appears on the screen or the screen goes blank although the power indicator LED is still on. The message may indicate that the monitor is out of scan range or that you need to check the signal cable.



---

### ● Environment

**The location and the position of the monitor may influence the quality and other features of the monitor.**

1. If there are any sub woofer speakers near the monitor, unplug and relocate the woofer to another room.
2. Remove all electronic devices such as radios, fans, clocks and telephones that are within 3 feet (one meter) of the monitor.
3. Degauss the monitor if any devices were removed from the area.

---

### ● Useful Tips

- A monitor recreates visual signals received from the computer. Therefore, if there is trouble with the computer or the video card, this can cause the monitor to become blank, have poor coloring, noise, unavailable video mode, etc. In this case, first check the source of the problem, and then contact a service center or your dealer.
- **Judging the monitor's working condition**

If there is no image on the screen or a "Hz ?" message comes up, disconnect the cable from the computer while the monitor is still powered on.

- If there is a message coming up on the screen or if the screen goes white, this means the monitor is in working condition.
- In this case, check the computer for trouble.





## General

## PowerSaver

## Preset Timing Modes

### General

General	
Model Name	SyncMaster 592V
Picture Tube	
Type	15" (38.1 cm) FST
Deflection angle	90 °
Dot Pitch	0.24 mm (Horizontal)
Screen type	Aluminized tri-color phosphor dot trio with black matrix. Anti-doming invar shadow mask. Glare or ESF.
Resolution	
Optimum resolution	800 x 600 @ 85 Hz
Maximum resolution	1024 x 768 @ 85 Hz
Active Display	
Horizontal	267 ± 4 mm
Vertical	200 ± 4 mm
Synchronization	
Horizontal	30 ~ 55 kHz
Vertical	50 ~ 120 Hz
Input Signal Definition	
Video Signal	RGB, Analog 0.7 Vp-p Positive at 75 Ω
Sync Signal	Separate H/V sync, TTL level, positive or negative
Display Color	
Unlimited	
Maximum Pixel Clock	
65 MHz	
Power Supply	
90 ~ 264 VAC rms (Universal Power), 60/50 Hz ± 3Hz	



Power Consumption	
Less than 55 W	
Dimensions (WxDxH)	
361 x 376 x 290 mm / 14.2 x 14.8 x 11.4 inch (After installation of Stand)	
Weight	
11.5 kg	
Environmental considerations	
Operating	Temperature 32°F ~ 104°F(0°C ~ 40°C) Humidity 10% ~ 80%, non-condensing
Storage	Temperature -4°F ~113°F (-20°C ~ 45°C) Humidity 5% ~ 95%, non-condensing
Plug and Play Capability	
This monitor can be installed on any Plug & Play compatible system. Interaction of the monitor and computer systems will provide the best operating conditions and monitor settings. In most cases, monitor installation will proceed automatically, unless the user wishes to select alternate settings.	
<b>Note: Design and specifications are subject to change without prior notice.</b>	

General | **PowerSaver** | Preset Timing Modes

## PowerSaver

This monitor has a built-in power management system called PowerSaver. This system saves energy by switching your monitor into a low-power mode when it has not been used for a certain amount of time. The monitor automatically returns to normal operation when you press a key on the keyboard. For energy conservation, turn your monitor OFF when it is not needed, or when leaving it unattended for long periods. The PowerSaver system operates with a VESA DPMS compliant video card installed in your computer. Use a software utility installed on your computer to set up this feature.

State	Normal Operation	Power-off mode
Power Indicator	Green	Green, Blinking
Power Consumption	Less than 55 W	Less than 1 W

General | **PowerSaver** | Preset Timing Modes

## Preset Timing Modes

If the signal transferred from the computer is the same as the following Preset Timing Modes, the screen will be adjusted automatically. However, if the signal differs, the screen may go blank while the power LED is on. Refer to the video card manual and adjust the screen as follows.

Display Mode	Horizontal Frequency (kHz)	Vertical Frequency (Hz)	Pixel Clock (MHz)	Sync Polarity (H/V)
VESA, 640 x 480	37.500	75.000	31.500	-/-
VESA, 640 x 480	43.269	85.000	36.000	-/-
VESA, 800 x 600	53.700	85.100	56.250	+/+





### Horizontal Frequency

The time to scan one line connecting the right edge to the left edge of the screen horizontally is called Horizontal Cycle and the inverse number of the Horizontal Cycle is called Horizontal Frequency. Unit: kHz

### Vertical Frequency

Like a fluorescent lamp, the screen has to repeat the same image many times per second to display an image to the user. The frequency of this repetition is called Vertical Frequency or Refresh Rate. Unit: Hz





## General

## PowerSaver

## Preset Timing Modes

### General

General	
Model Name	SyncMaster 794V
Picture Tube	
Type	17" (43 cm) FST
Deflection angle	90 °
Dot Pitch	0.23 mm (Horizontal)
Screen type	Aluminized tri-color phosphor dot trio with black matrix. Anti-doming invar shadow mask. Multi-layer coated with anti-static.
Resolution	
Optimum resolution	1024 x 768 @ 85 Hz
Maximum resolution	1280 x 1024 @ 60 Hz
Active Display	
Horizontal	312 ± 4 mm
Vertical	234 ± 4 mm
Synchronization	
Horizontal	30 ~ 70 kHz
Vertical	50 ~ 160 Hz
Input Signal Definition	
Video Signal	RGB, Analog 0.7 Vp-p Positive at 75 Ω
Sync Signal	Separate H/V sync, TTL level, positive or negative
Display Color	
Unlimited	
Maximum Pixel Clock	
110 MHz	
Power Supply	
100 ~ 220 VAC rms ±10% (Universal Power), 60/50Hz ±3Hz	



Power Consumption	
Less than 70 W	
Dimensions (WxDxH)	
401 x 410 x 323 mm / 15.8 x 16.1 x 12.7 inch (After installation of Stand)	
Weight	
15.0 kg	
Environmental considerations	
Operating	Temperature 32°F ~ 104°F(0°C ~ 40°C) Humidity 10% ~ 80%, non-condensing
Storage	Temperature -4°F ~113°F (-20°C ~ 45°C) Humidity 5% ~ 95%, non-condensing
Plug and Play Capability	
This monitor can be installed on any Plug & Play compatible system. Interaction of the monitor and computer systems will provide the best operating conditions and monitor settings. In most cases, monitor installation will proceed automatically, unless the user wishes to select alternate settings.	
<b>Note: Design and specifications are subject to change without prior notice.</b>	

General | **PowerSaver** | Preset Timing Modes

## PowerSaver

This monitor has a built-in power management system called PowerSaver. This system saves energy by switching your monitor into a low-power mode when it has not been used for a certain amount of time. The monitor automatically returns to normal operation when you press a key on the keyboard. For energy conservation, turn your monitor OFF when it is not needed, or when leaving it unattended for long periods. The PowerSaver system operates with a VESA DPMS compliant video card installed in your computer. Use a software utility installed on your computer to set up this feature.

State	Normal Operation	Power-off mode
Power Indicator	Green	Green, Blinking
Power Consumption	Less than 70 W	Less than 1 W

General | **PowerSaver** | Preset Timing Modes

## Preset Timing Modes

If the signal transferred from the computer is the same as the following Preset Timing Modes, the screen will be adjusted automatically. However, if the signal differs, the screen may go blank while the power LED is on. Refer to the video card manual and adjust the screen as follows.

Display Mode	Horizontal Frequency (kHz)	Vertical Frequency (Hz)	Pixel Clock (MHz)	Sync Polarity (H/V)
VESA, 640 x 480	37.500	75.000	31.500	-/-
VESA, 800 x 600	53.700	85.100	56.250	+/+
VESA, 1024 x 768	68.700	85.000	94.500	+/+





### Horizontal Frequency

The time to scan one line connecting the right edge to the left edge of the screen horizontally is called Horizontal Cycle and the inverse number of the Horizontal Cycle is called Horizontal Frequency. Unit: kHz

### Vertical Frequency

Like a fluorescent lamp, the screen has to repeat the same image many times per second to display an image to the user. The frequency of this repetition is called Vertical Frequency or Refresh Rate. Unit: Hz





■ Safety Instructions ■ Introduction ■ Setup ■ Adjusting Your Monitor ■ Troubleshooting ■ Specifications ■ **Information**

[Contact SAMSUNG WORLD-WIDE](#) | [Terms](#) | [Authority](#) | [Correct Disposal](#) |

## ● Contact SAMSUNG WORLD-WIDE



If you have any questions or comments relating to Samsung products, please contact the **SAMSUNG** customer care center.

North America		
CANADA	1-800-SAMSUNG (7267864)	<a href="http://www.samsung.com/ca">http://www.samsung.com/ca</a>
MEXICO	01-800-SAMSUNG (7267864)	<a href="http://www.samsung.com/mx">http://www.samsung.com/mx</a>
U.S.A	1-800-SAMSUNG (7267864)	<a href="http://www.samsung.com">http://www.samsung.com</a>

Latin America		
ARGENTINE	0800-333-3733	<a href="http://www.samsung.com/ar">http://www.samsung.com/ar</a>
BRAZIL	0800-124-421	<a href="http://www.samsung.com/br">http://www.samsung.com/br</a>
CHILE	800-726-7864 (SAMSUNG)	<a href="http://www.samsung.com/cl">http://www.samsung.com/cl</a>
COSTA RICA	0-800-507-7267	<a href="http://www.samsung.com/latin">http://www.samsung.com/latin</a>
ECUADOR	1-800-10-7267	<a href="http://www.samsung.com/latin">http://www.samsung.com/latin</a>
EL SALVADOR	800-6225	<a href="http://www.samsung.com/latin">http://www.samsung.com/latin</a>
GUATEMALA	1-800-299-0013	<a href="http://www.samsung.com/latin">http://www.samsung.com/latin</a>
JAMAICA	1-800-234-7267	<a href="http://www.samsung.com/latin">http://www.samsung.com/latin</a>
PANAMA	800-7267	<a href="http://www.samsung.com/latin">http://www.samsung.com/latin</a>
PUERTO RICO	1-800-682-3180	<a href="http://www.samsung.com/latin">http://www.samsung.com/latin</a>
REP. DOMINICA	1-800-751-2676	<a href="http://www.samsung.com/latin">http://www.samsung.com/latin</a>
TRINIDAD & TOBAGO	1-800-7267-864	<a href="http://www.samsung.com/latin">http://www.samsung.com/latin</a>
VENEZUELA	1-800-100-5303	<a href="http://www.samsung.com/latin">http://www.samsung.com/latin</a>

Europe		
BELGIUM	02 201 2418	<a href="http://www.samsung.com/be">http://www.samsung.com/be</a>



CZECH REPUBLIC	844 000 844	<a href="http://www.samsung.com/cz">http://www.samsung.com/cz</a>
DENMARK	38 322 887	<a href="http://www.samsung.com/dk">http://www.samsung.com/dk</a>
FINLAND	09 693 79 554	<a href="http://www.samsung.com/fi">http://www.samsung.com/fi</a>
FRANCE	08 25 08 65 65 (€ 0,15/min)	<a href="http://www.samsung.com/fr">http://www.samsung.com/fr</a>
GERMANY	01805 - 121213 (€ 0,12/Min)	<a href="http://www.samsung.de">http://www.samsung.de</a>
HUNGARY	06 40 985 985	<a href="http://www.samsung.com/hu">http://www.samsung.com/hu</a>
ITALIA	199 153 153	<a href="http://www.samsung.com/it">http://www.samsung.com/it</a>
LUXEMBURG	02 261 03 710	<a href="http://www.samsung.lu">http://www.samsung.lu</a>
NETHERLANDS	0900 20 200 88 (€ 0.10/Min)	<a href="http://www.samsung.com/nl">http://www.samsung.com/nl</a>
NORWAY	231 627 22	<a href="http://www.samsung.com/no">http://www.samsung.com/no</a>
POLAND	0 801 801 881	<a href="http://www.samsung.com/pl">http://www.samsung.com/pl</a>
PORTUGAL	80 8 200 128	<a href="http://www.samsung.com/pt">http://www.samsung.com/pt</a>
SLOVAKIA	0850 123 989	<a href="http://www.samsung.com/sk">http://www.samsung.com/sk</a>
SPAIN	902 10 11 30	<a href="http://www.samsung.com/es">http://www.samsung.com/es</a>
SWEDEN	08 585 367 87	<a href="http://www.samsung.com/se">http://www.samsung.com/se</a>
U.K	0870 242 0303	<a href="http://www.samsung.com/uk">http://www.samsung.com/uk</a>

CIS		
RUSSIA	8-800-200-0400	<a href="http://www.samsung.ru">http://www.samsung.ru</a>
UKRAINE	8-800-502-0000	<a href="http://www.samsung.com/ur">http://www.samsung.com/ur</a>

Asia Pacific		
AUSTRALIA	1300 362 603	<a href="http://www.samsung.com/au">http://www.samsung.com/au</a>
CHINA	800-810-5858, 010- 6475 1880	<a href="http://www.samsung.com/cn">http://www.samsung.com/cn</a>
HONG KONG	2862 6001	<a href="http://www.samsung.com/hk">http://www.samsung.com/hk</a>
INDIA	3030 8282, 1600 1100 11	<a href="http://www.samsung.com/in">http://www.samsung.com/in</a>
INDONESIA	0800-112-8888	<a href="http://www.samsung.com/id">http://www.samsung.com/id</a>
JAPAN	0120-327-527	<a href="http://www.samsung.com/jp">http://www.samsung.com/jp</a>
MALAYSIA	1800-88-9999	<a href="http://www.samsung.com/my">http://www.samsung.com/my</a>
PHILIPPINES	1800-10-SAMSUNG (7267864)	<a href="http://www.samsung.com/ph">http://www.samsung.com/ph</a>
SINGAPORE	1800-SAMSUNG (7267864)	<a href="http://www.samsung.com/sg">http://www.samsung.com/sg</a>
THAILAND	1800-29-3232, 02-689-3232	<a href="http://www.samsung.com/th">http://www.samsung.com/th</a>
TAIWAN	0800-329-999	<a href="http://www.samsung.com/tw">http://www.samsung.com/tw</a>
VIETNAM	1 800 588 889	<a href="http://www.samsung.com/vn">http://www.samsung.com/vn</a>

Middle East & Africa		
SOUTH AFRICA	0860 7267864 (SAMSUNG)	<a href="http://www.samsung.com/za">http://www.samsung.com/za</a>
U.A.E	800SAMSUNG (7267864)	<a href="http://www.samsung.com/mea">http://www.samsung.com/mea</a>



## Terms

### • Dot Pitch

The image on a monitor is composed of red, green and blue dots. The closer the dots, the higher the resolution. The distance between two dots of the same color is called the 'Dot Pitch'. Unit: mm

### • Vertical Frequency

The screen must be redrawn several times per second in order to create and display an image for the user. The frequency of this repetition per second is called Vertical Frequency or Refresh Rate. Unit: Hz

Example: If the same light repeats itself 60 times per second, this is regarded as 60 Hz.

### • Horizontal Frequency

The time to scan one line connecting the right edge to the left edge of the screen horizontally is called Horizontal Cycle. The inverse number of the Horizontal Cycle is called Horizontal Frequency. Unit: kHz

### • Interlace and Non-Interlace Methods

Showing the horizontal lines of the screen from the top to the bottom in order is called the Non-Interlace method while showing odd lines and then even lines in turn is called the Interlace method. The Non-Interlace method is used for the majority of monitors to ensure a clear image. The Interlace method is the same as that used in TVs.

### • Plug & Play

This is a function that provides the best quality screen for the user by allowing the computer and the monitor to exchange information automatically. This monitor follows the international standard VESA DDC for the Plug & Play function.

### • Resolution

The number of horizontal and vertical dots used to compose the screen image is called 'resolution'. This number shows the accuracy of the display. High resolution is good for performing multiple tasks as more image information can be shown on the screen.

Example: If the resolution is 1024 X 768, this means the screen is composed of 1024 horizontal dots (horizontal resolution) and 768 vertical lines (vertical resolution).

## Authority

**Information in this document is subject to change without notice.**

**© 2006 Samsung Electronics Co., Ltd. All rights reserved.**

Reproduction in any manner whatsoever without the written permission of Samsung Electronics Co., Ltd. is strictly forbidden.

Samsung Electronics Co., Ltd. shall not be liable for errors contained herein or for incidental or consequential damages in connection with the furnishing, performance, or use of this material.

*Samsung* is the registered trademark of Samsung Electronics Co., Ltd.; *Microsoft*, *Windows* and *Windows NT* are registered trademarks of Microsoft Corporation; *VESA*, *DPMS* and *DDC* are registered trademarks of Video Electronics Standard Association; the *ENERGY STAR*® name and logo are registered trademarks of the U.S. Environmental Protection Agency (EPA). All other product names mentioned herein may be the trademarks or registered trademarks of their respective owners.

### Class B

This device is a Class B digital apparatus. For Safety and EMC compliance guide, you may refer to "Regulatory" Guide.





**MÉXICO**

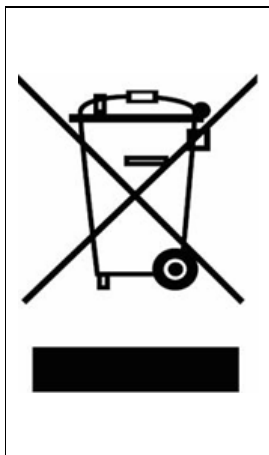
IMPORTADO POR: SAMSUNG ELECTRONICS MÉXICO. S.A. de C.V.  
Vía Lopez Portillo No. 6, Col. San Fco. Chilpan  
Tultitlán, Estado de México, C.P. 54940  
Tel: 01-55-5747-5100 / 01-800-726-7864

EXPORTADO POR: Samsung Electronics CO.,LTD.  
416, Mae tan-3dong, Yeongtong - gu,  
Suwon City, Gyeonggi-do Korea



## Correct Disposal of This Product (Waste Electrical & Electronic Equipment) - Europe only

---



**(Applicable in the European Union and other European countries with separate collection systems)**

This marking shown on the product or its literature, indicates that it should not be disposed with other household wastes at the end of its working life. To prevent possible harm to the environment or human health from uncontrolled waste disposal, please separate this from other types of wastes and recycle it responsibly to promote the sustainable reuse of material resources.

Household users should contact either the retailer where they purchased this product, or their local government office, for details of where and how they can take this item for environmentally safe recycling.

Business users should contact their supplier and check the terms and conditions of the purchase contract. This product should not be mixed with other commercial wastes for disposal.