

SyncMaster 591S/793S/793DF/795DF/797DF/997DF/793MB/795MB

INDEX



Main Page



Safety Instructions

- Notational
- Power
- Installation
- Cleaning
- Other



Introduction

- Unpacking
- Front
- Rear
- Bottom



Setup

- Connecting Your Monitor
- Installing the Monitor Driver
 - Automatic
 - Manual
- Base Installation



Troubleshooting

- Check List
- Q & A
- Self-Test Feature Check



Specifications

- General Specifications
- Preset Timing Modes
- PowerSaver



Information

- Service
- Terms
- Natural Color
- Authority

Notational

Please read the following safety instructions as they are designed to prevent damage to property and harm to the user.



Warning / Caution



Failure to follow directions noted by this symbol could result in bodily harm or damage to equipment.

Notational Conventions



Prohibited



Do not disassemble



Do not touch



Important to read and understand at all times



Disconnect the plug from the outlet



Grounding to prevent an electric shock

Power



When not used for extended periods of time, set your PC to DPMS. If using a screen saver, set it to the active screen mode.

- If the size of your monitor is small, or if the same image is present for long periods of time, you may see afterimages due to damage to the fluorescent substance on the inside of the CDT.



- **Do not use a damaged or loose plug.**

- This may cause an electric shock or fire.



- **Do not pull the plug out by the wire nor touch the plug with wet hands.**

- This may cause an electric shock or fire.



- **Use only a properly grounded plug and receptacle.**

- An improper ground may cause electric shock or equipment damage.



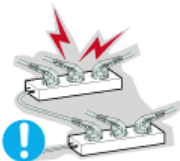
- **Do not excessively bend the plug and wire nor place heavy objects upon them, which could cause damage.**

- Failure to do so may cause an electric shock or fire.



- **Disconnect the plug from the outlet during storms or lightning or if it is not used for a long period of time.**

- Failure to do so may cause an electric shock or fire.



- **Do not connect too many extension cords or plugs to an outlet.**

- This may cause a fire.

Installation



Do not cover the vents on the monitor cabinet.

- Bad ventilation may cause a breakdown or fire.



Put your monitor in a location with low humidity and a minimum of dust.

- An electric shock or fire could result inside the monitor.



Do not drop the monitor when moving it.

- This may cause damage to the product or human body.



Place the monitor on a flat and stable surface.

- The monitor can cause injury by falling.



Set down the monitor carefully.

- It could be damaged or broken.



Do not place the monitor face down.

- The CDT surface may be damaged.



Do not use the monitor without the monitor stand.

- It could break down or cause a fire due to bad ventilation.
- If the monitor must be used without the supplied stand, take steps to insure proper ventilation.

Cleaning

When cleaning the monitor case or the surface of the CDT, wipe with a slightly moistened, soft fabric.

Do not clean Flat monitor with water. Use a water-diluted mild detergent.



(Some detergents contain significant amounts of alcohol-based solvents, which can damage (color change) or crack the monitor case. The antiglare/anti-static surface coating on the CDT may also be affected.)

Dilute the detergent (1:10 ratio) with water before using.



● **Do not spray detergent directly on the monitor.**



● **Use the recommended detergent with a smooth cloth.**

- You can prevent the coated CDT from being damaged or the monitor cabinet from being dissolved, cracked or discolored.
- You can buy a recommended detergent at any Samsung Service Center.



Caution: Use a recommended detergent only, as other surfactants containing large amounts of alcohol, solvent or other strong substances, can discolor or crack the monitor or damage the coated CDT.



● **If the connector between the plug and the pin is dusty or dirty, clean it properly with a dry cloth.**

- A dirty connector can cause an electric shock or fire.



● **Do not set a glass of water, chemicals or any small metal objects on the monitor.**

- This may cause damage, electric shock or a fire.
- If a foreign substance gets into the monitor, disconnect the plug and then [contact a service center](#).

Other



● **Do not remove cover(or back). No user serviceable parts inside.**

- This may cause an electric shock or a fire.
- Refer servicing to qualified service personnel.



● **If your monitor does not operate normally - in particular, if there are any unusual sounds or smells coming from it - unplug it immediately and contact an authorized dealer or service.**

- This may cause an electric shock or a fire.



● **Do not place any heavy objects on the monitor.**

- This may cause an electric shock or a fire.



● **For each hour of looking at the monitor, you should let your eyes rest for 5 minutes.**

- This will reduce eye fatigue.



● **Do not use or store inflammable substances near the monitor.**

- This may cause an explosion or fire.



● **Do not try to move the monitor by pulling on the wire or the signal cable.**

- This may cause a breakdown, electric shock or a fire due to damage to the cable.



● **Do not move the monitor right or left by pulling only the wire or the signal cable.**

- This may cause a breakdown, electric shock or a fire due to damage to the cable.



● **Never insert anything metallic into the monitor openings.**

- This may cause an electric shock, fire or injury.

Other



- **Keep the monitor away from any magnetic substances.**
 - This may cause discoloring or distortion of the image.

Unpacking

● **Monitor and Stand**



(Some models include a stand attached.)
Please make sure the following items are included
with your monitor. If any items are missing,
[contact your dealer.](#)

● **Power Cord**



● **Stand**



● **Quick Setup Guide**



● **Warranty Card**
(Not available in all locations)



● **User's Guide and
Driver Installation CD**



For Multimedia model

● **Multimedia Speaker Stand**



● **Sound Cables(2each)**



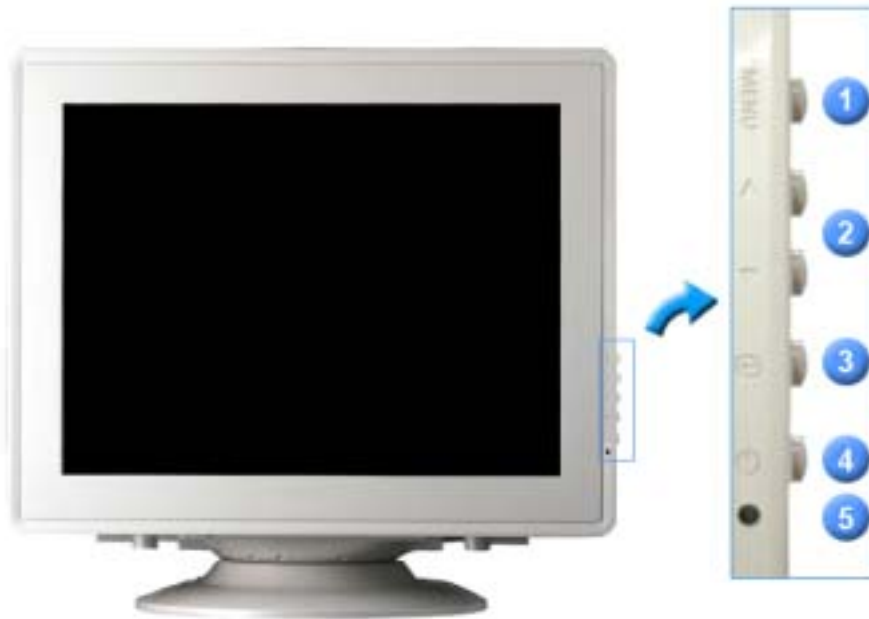
● **DC Power Cord (Option)**



● **User Guide**



Front



- | | |
|---------------------------|--|
| 1. Menu button | Opens the OSD menu. Also used to exit the OSD menu or return to the previous menu. |
| 2. Adjust buttons | These buttons allow you to highlight and adjust items in the menu. |
| 3. Enter button | Used to select the OSD menu. |
| 4. Power button | Use this button to turn the monitor on and off. |
| 5. Power indicator | This light glows green during normal operation, and blinks green once as the monitor saves your adjustments. |

Note: See [PowerSaver](#) described in the manual for further information regarding power saving functions. For energy conservation, turn your monitor OFF when it is not needed, or when leaving it unattended for long periods.

Rear

General

SyncMaster 591S/793S/793DF/795DF /797DF/997DF/793MB/795MB

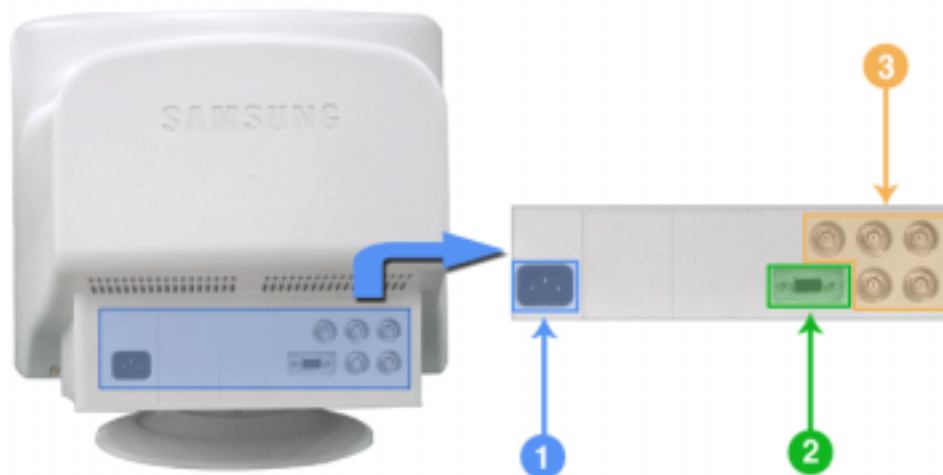


(The configuration at the back of the monitor may vary from product to product.)

- | | |
|------------------------|---|
| 1. Power port | Connect the power cord for your monitor to the power port on the back of the monitor. |
| 2. Signal Cable | Connect the signal cable to the video port on your computer, video board, video card, or graphics card. |

BNC Connectors (Option)

SyncMaster 997DF

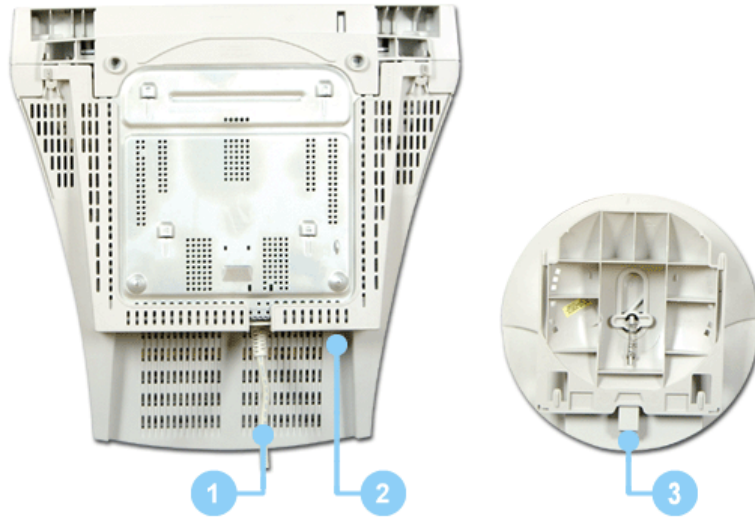


(The configuration at the back of the monitor may vary from product to product.)

- | | |
|-----------------------------------|---|
| 1. Power port | Connect the power cord for your monitor to the power port on the back of the monitor. |
| 2. Signal port | Connect the signal cable to the 15-pin D-sub connector on the back of your monitor. |
| 3. BNC Connectors (Option) | Connect the signal cable to the BNC signal port on the back of your monitor. |

Note: See [Connecting Your Monitor](#) for further information regarding cable connections.

Bottom

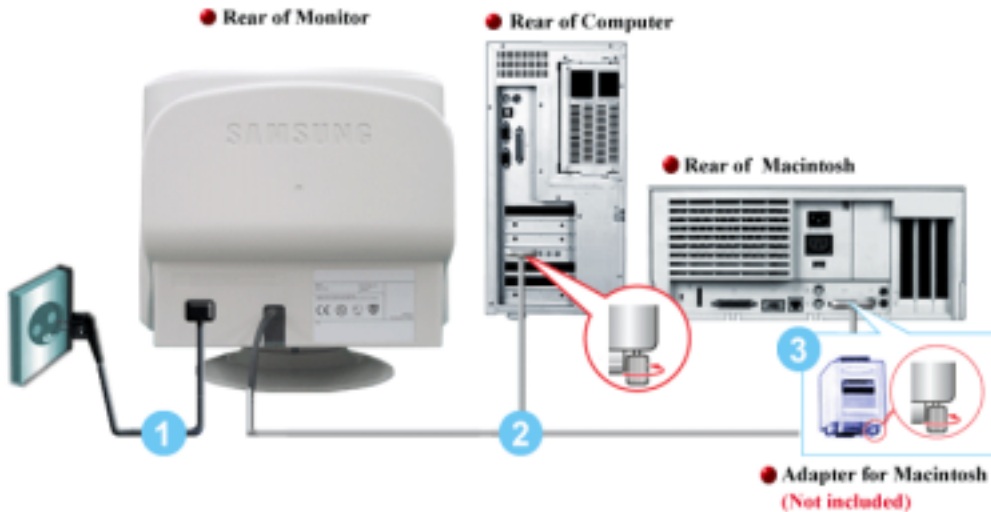


- 1. Signal Cable** Connect the signal cable to the video port on your computer, video board, video card, or graphics card.
- 2. Power port** Connect the power cord for your monitor to the power port on the back of the monitor.
- 3. Tilt/Swivel Base** You can separate the base from the monitor.

Connecting Your Monitor

SyncMaster 591S/793S/793DF/795DF /797DF/997DF/793MB/795MB

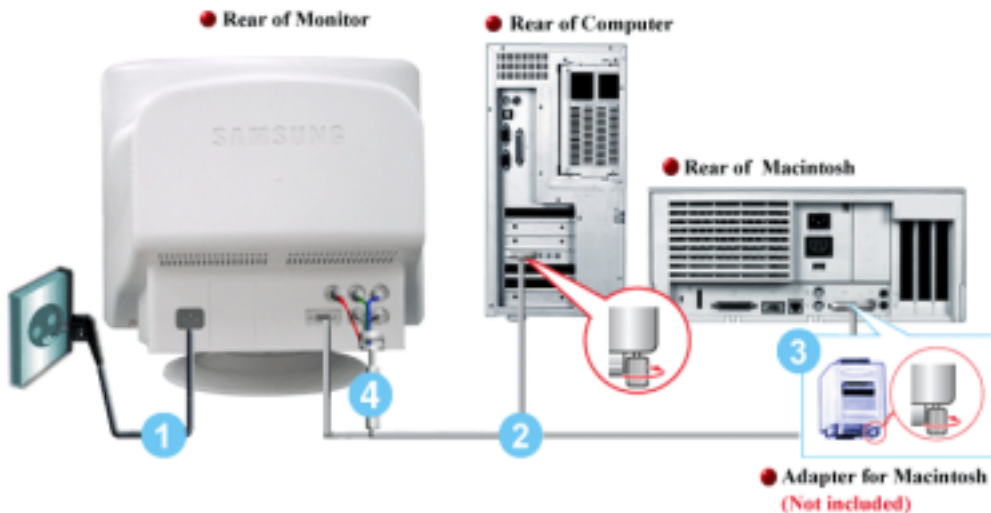
General



1. Connect the power cord for your monitor to the power port on the back of the monitor. Plug the power cord for the monitor into a nearby outlet.
2. Connect the signal cable to the video port on your computer, video board, video card, or graphics card.
3. If you are using a Macintosh computer, connect the cable to a Macintosh adapter, and set the pins on your adapter (Adapter not included). A PC-compatible computer does not need an adapter.
4. Turn on your computer and monitor. If your monitor displays an image, installation is complete.

BNC Connectors (Option)

SyncMaster 997DF



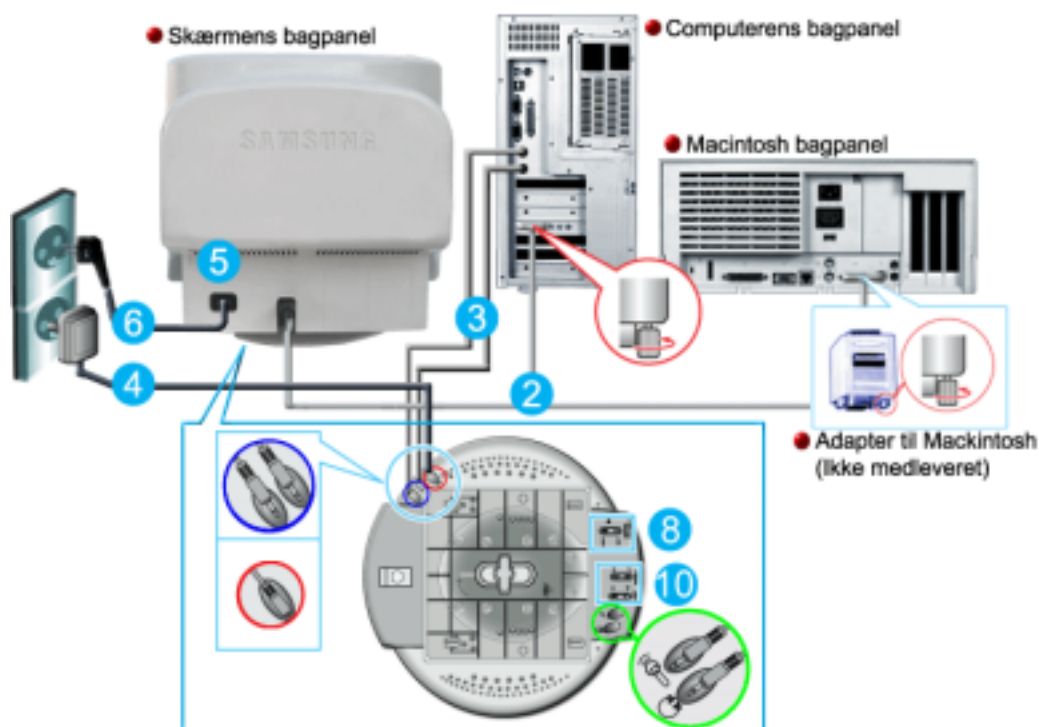
1. Connect the power cord for your monitor to the power port on the back of the monitor. Plug the power cord for the monitor into a nearby outlet.
2. Connect the end of the signal cable to your computer's video port (video board, video card or graphics card).
3. If you are using a Macintosh computer, connect the cable to a Macintosh adapter, and set the

Connecting Your Monitor

pins on your adapter (Adapter not included). A PC-compatible computer does not need an adapter.

4. When you use a BNC connector.
Connect the signal cable to the BNC signal port on the back of your monitor/computer.
5. Turn on your computer and monitor. If your monitor displays an image, installation is complete.

Opstilling-For multimedia-model

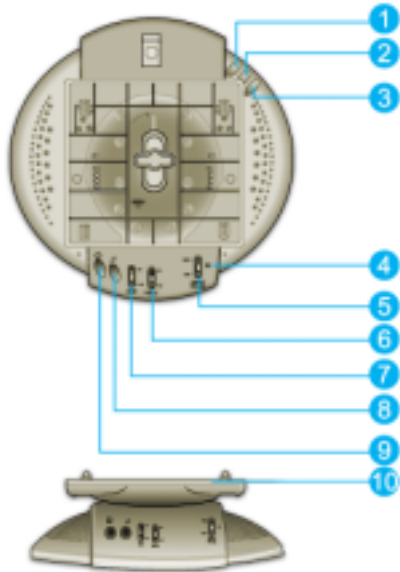


1. Sluk for computeren og fjern strømkablet.
2. Tilslut signalkablet til din computers videoport (videoboard, videokort eller grafikort).
3. Tilslut den ene ende af et lyd kabel til stereo output jacket på lyd kort eller computer. Tilslut den anden ende af kablet til stereo input jacket bag på monitoren fod.
Tilslut den ene ende af det andet lyd kabel til linie output jacket på lyd kort eller computer. Tilslut den anden af kablet til Mic By-Pass jacket bag på monitoren fod.
4. Tilslut DC strømkablet (jævnstrøm) fra fodstykket til den nærmeste stikkontakt.
5. Tilslut monitoren strømkabel til strømporten bag på monitoren.
6. Tilslut monitoren strømkabel og computerens strømkabel til et stik i nærheden.
7. Tænd for computer og monitor.
8. Drej op eller ned på ON-OFF knappen på monitoren fod, indtil den klikker.
9. Start et lydprogram, musik eller lydeffekt på din computer og juster lydstyrken ved at skru op eller ned til den ønskede lydstyrke.
10. Juster diskant og bas.

BEMÆRK: Lydforvrængning kan forekomme, hvis monitoren er placeret oven på et stort set hult kabinet, som f.eks. din computer. Hvis det sker, kan du anbringe en skriveblok eller et blad under monitoren fod. Høj lydstyrke kan også resultere i forvrængning af lyden; skru ned for lyden.

Connecting Your Monitor

Fodstykke for Multimedia højttaler



1. **Mic by-pass jack**
For transmission af din stemme, tilslut et lyd kabel fra mic by-pass jack til mic in jack på lyd kortets slot i din computer.
2. **Stereo input jack**
Tilslut et lyd kabel fra input kilden (lyd kort, computer, CD-ROM drev).
3. **DC strømkabel**
Tilsluttes til monitorens DC 12V output jack.
4. **Strømindikator**
Lyser grøn, når der er tændt for højttalerne.
5. **On/Off lydstyrke**
Tænder/slukker og justerer lydstyrken
6. **Diskant kontrolknap**
Bruges til kontrol af høje frekvenser.
7. **Bas kontrol knap**
Bruges til kontrol af lave frekvenser.
8. **Mic input jack**
For transmission af din stemme, tilslut en mikrofon til dette jack.
9. **Jack til øretelefoner**
Øretelefoner kan tilsluttes her.
10. **Aftagelig overdel til fodstykke.**

Installing the Monitor Driver

- ▶▶ Automatic
- ▶▶ Manual



When prompted by the operating system for the monitor driver, insert the CD-ROM included with this monitor. Driver installation is slightly different from one operating system to another. Follow the directions as appropriate for the operating system you have.

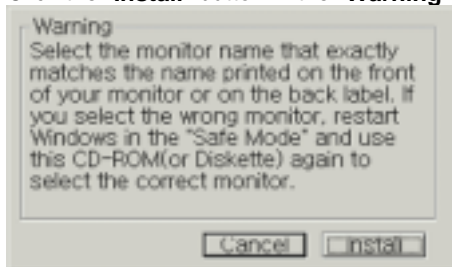
Prepare a blank disk and download the driver program file at the Internet web site shown here.

- Internet web site : <http://www.samsung-monitor.com/> (WorldWide)
- <http://www.samsungusa.com/monitor/> (USA)
- <http://www.sec.co.kr/monitor/> (Korea)
- <http://www.samsungmonitor.com.cn/> (China)

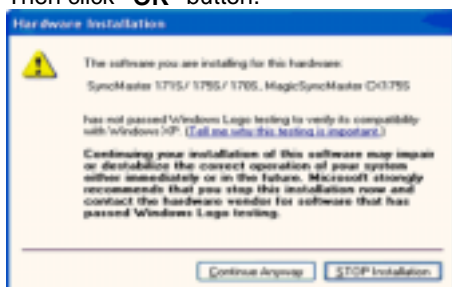
1. Insert CD into the CD-ROM driver.
2. Click "**Windows XP/2000 Driver**".
3. Choose your monitor model in the model list, then click the "**OK**" button.



4. Click the "**Install**" button in the "**Warning**" window.



5. If you can see following "**Message**" window, then click the "**Continue Anyway**" button. Then click "**OK**" button.



* This monitor driver is under certifying MS logo, and this installation don't damage your system. The certified driver will be posted on Samsung Monitor Homepage <http://www.samsung-monitor.com/>.

6. Monitor driver installation is completed.

Installing the Monitor Driver

- ▶ Automatic
- ▶ Manual

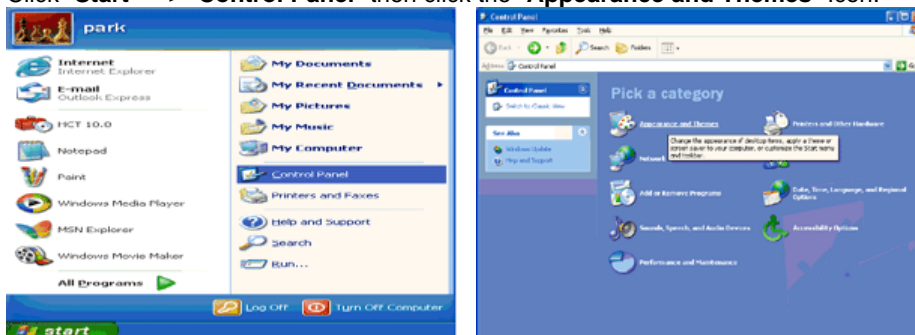
Note When prompted by the operating system for the monitor driver, insert the CD-ROM included with this monitor. Driver installation is slightly different from one operating system to another. Follow the directions as appropriate for the operating system you have.

Prepare a blank disk and download the driver program file at the Internet web site shown here.

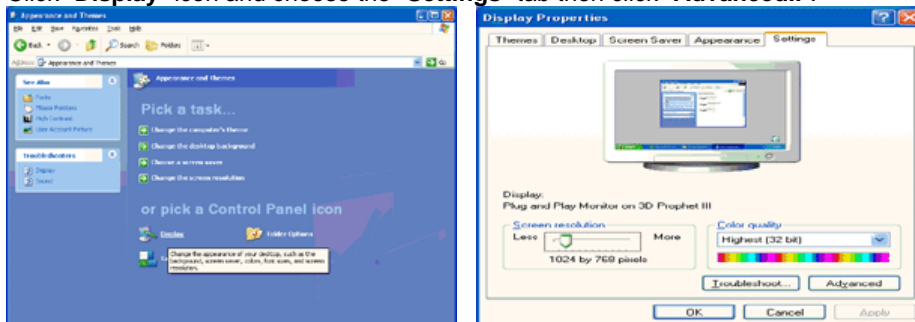
- Internet web site : <http://www.samsung-monitor.com/> (WorldWide)
<http://www.samsungusa.com/monitor/> (USA)
<http://www.sec.co.kr/monitor/> (Korea)
<http://www.samsungmonitor.com.cn/> (China)

Microsoft® Windows® XP Operating System

1. Insert CD into the CD-ROM driver.
2. Click "**Start**" → "**Control Panel**" then click the "**Appearance and Themes**" icon.

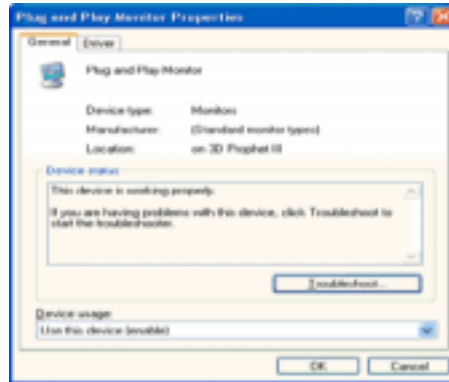
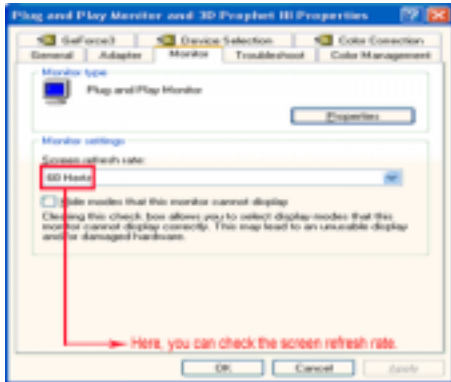


3. Click "**Display**" icon and choose the "**Settings**" tab then click "**Advanced..**".

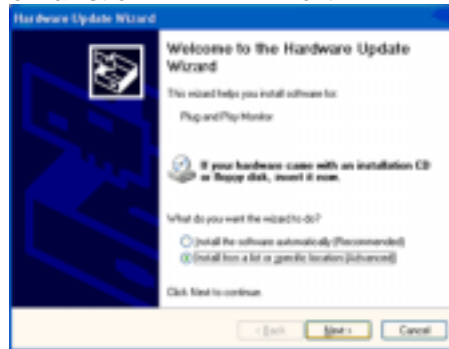
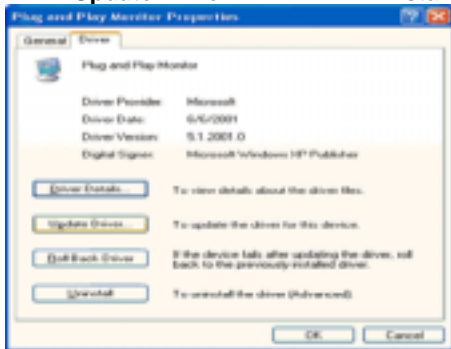


4. Click the "**Properties**" button on the "**Monitor**" tab and select "**Driver**" tab.

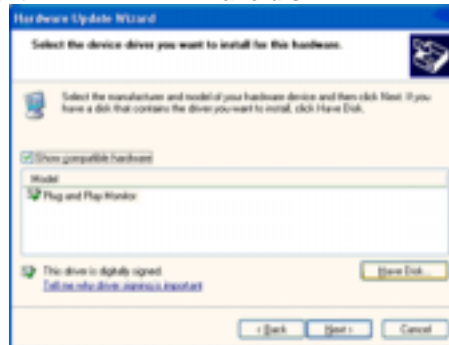
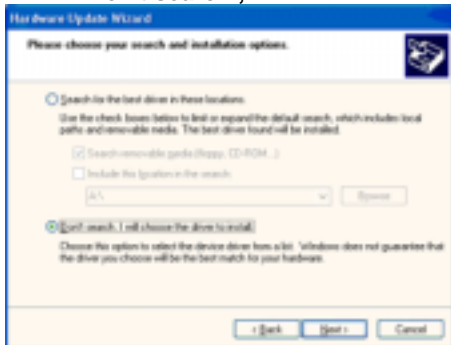
Installing the Monitor Driver



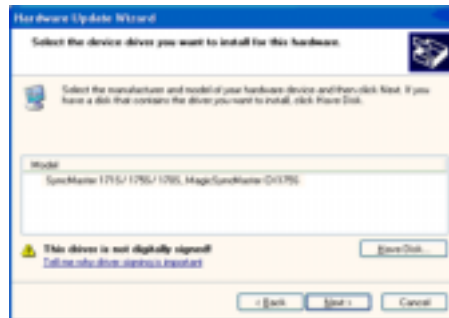
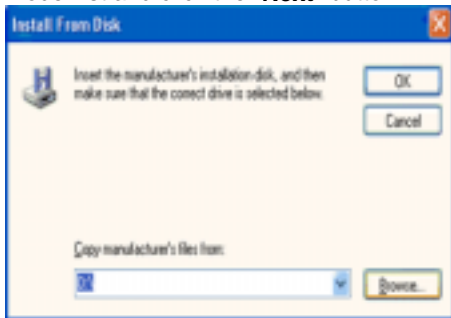
5. Click "**Update Driver..**" and select "**Install from a list or..**" then click "**Next**" button.



6. Select "**Don't search ,I will..**" then click "**Next**" and then click "**Have disk**".

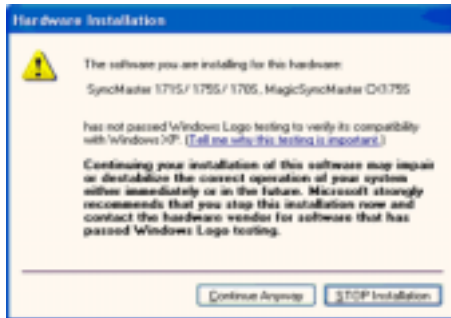


7. Click the "**Browse**" button then choose A:(D:\Driver) and choose your monitor model in the model list and click the "**Next**" button.



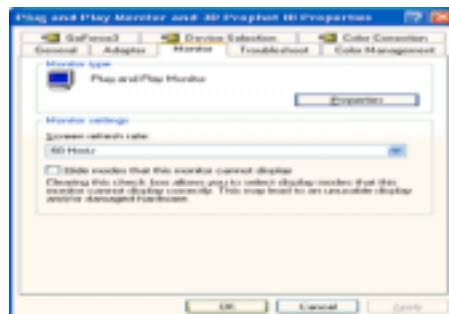
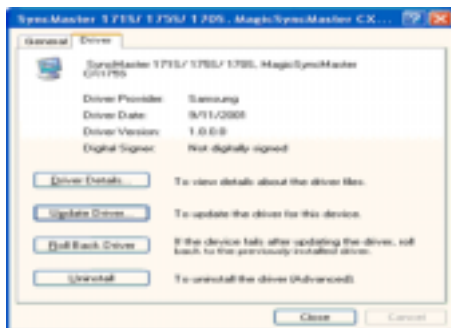
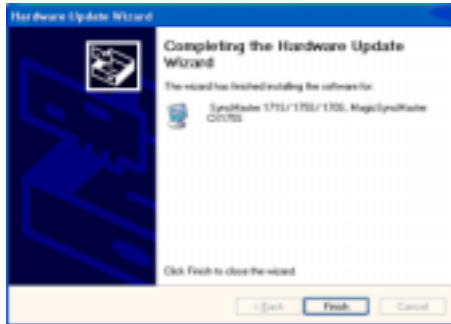
8. If you can see following "**Message**" window, then click the "**Continue Anyway**" button. Then click "**OK**" button.

Installing the Monitor Driver



This monitor driver is under certifying MS logo, and this installation don't damage your system. The certified driver will be posted on Samsung Monitor Homepage <http://www.samsung-monitor.com/>.

9. Click the "Close" button then click "OK" button continually.



10. Monitor driver installation is completed.

Microsoft® Windows® 2000 Operating System

When you can see "Digital Signature Not Found" on your monitor, follow these steps.

1. Choose "OK" button on the "Insert disk" window.
2. Click the "Browse" button on the "File Needed" window.
3. Choose A:(D:\Driver) then click the "Open" button and then click "OK" button.

Installing the Monitor Driver

How to install

1. Click **"Start"** , **"Setting"** , **"Control Panel"**.
2. Double click the **"Display"** Icon.
3. Choose the **"Settings"** tab and then click **"Advanced.."**.
4. Choose **"Monitor"**.
 - Case1: If the "Properties" button is inactive, it means your monitor is properly configured. Please stop installation
 - Case2: If the "Properties" button is active, click the "Properties" button then follow next steps continually.
5. Click **"Driver"** and then click on **"Update Driver.."** then click on the "Next" button.
6. Choose **"Display a list of the known drivers for this device so that I can choose a specific driver"** then click **"Next"** and then click **"Have disk"**.
7. Click the **"Browse"** button then choose A:(D:\Driver).
8. Click the **"Open"** button, then click **"OK"** button.
9. Choose your monitor model and click the **"Next"** button then click **"Next"** button.
10. Click the **"Finish"** button then the **"Close"** button.

If you can see the **"Digital Signature Not Found"** window then click the **"Yes"** button.
And click the **"Finish"** button then the **"Close"** button.

Microsoft® Windows® NT Operating System

1. Click **Start**, **Settings**, **Control Panel**, and then double-click **Display** icon.
2. In Display Registration Information window, click Settings Tab and then click **All Display Modes**.
3. Select a mode that you wish to use (Resolution, Number of colors and Vertical frequency) and then click **OK**.
4. Click **Apply** button if you see the screen working normally after clicking Test. If the screen is not normal, change to a different mode (lower mode of resolution, colors or frequency).

Note: If there is no Mode at **All Display Modes**, select the level of resolution and vertical frequency by referring to the [Preset Display Modes](#) in the user guide.

Linux Operating System

To execute X-Window, you need to make the X86Config file, which is a type of system setting file.

1. Press Enter at the first and the second screen after executing the X86Config file.
2. The third screen is for **setting your mouse**.
3. Set a mouse for your computer.
4. The next screen is for **selecting a keyboard**.
5. Set a Keyboard for your computer.
6. The next screen is for **setting your monitor**.
7. First of all, set a **horizontal frequency** for your monitor. (You can enter the frequency directly.)
8. Set a **vertical frequency** for your monitor. (You can enter the frequency directly.)
9. Enter the **model name of your monitor**. This information will not affect the actual execution of X-Window.
10. You have **finished** setting up your monitor.
Execute X-Window after setting other requested hardware.

Base Installation

Tilt/Swivel Base

With the built-in pedestal, you can tilt and/or swivel the monitor for the most comfortable viewing angle.



Note: The base is detachable.

Attaching and Removing the Base



Attaching the Base

1. Place the monitor upside-down on a flat work surface.
2. Align the tabs on the base with the corresponding slots on the bottom of the monitor.
3. Press the base onto the monitor until the tabs are fully engaged in the slots.
4. Push the base toward the front of the monitor until the release latch clicks into the locked position.
* Do not bend the snap.

Removing the Base

5. Squeeze and pull up on the release latch on the base.
6. Push the base toward the back of the monitor and lift up to remove the base.

Note: The base will align with the monitor slots in only one position.

Check List

Note Before calling for service, check the information in this section to see if you can remedy any problems yourself. If you do need assistance, please call the phone number on the warranty card, the phone number on the Information section or contact your dealer.

Symptom	Check List	Solutions
No images on the screen. I cannot turn on the monitor.	Is the power cord connected properly?	Check the power cord connection and supply.
	Can you see " ? " on the screen?	Check the signal cable connection.
	If the power is on, reboot the computer to see the initial screen(the login screen), which can be seen.	If the initial screen (the login screen) appears, boot the computer in the applicable mode (the safe mode for Windows XP/2000) and then change the frequency of the video card. (Refer to the Preset Display Modes) Note: If the initial screen (the login screen) does not appear, contact a service center or your dealer.
	Can you see " ? " on the screen?	You can see this message when the signal from the video card exceeds the maximum resolution and frequency that the monitor can properly handle. Adjust the maximum resolution and frequency that the monitor can properly handle.
	There is no image on the screen. Is the power indicator on the monitor blinking at 1 second intervals?	The monitor is in PowerSaver mode. Press a key on the keyboard or move the mouse to activate the monitor and restore the image on the screen.
I cannot see the On Screen Display.	Have you locked the On Screen Display (OSD) Menu to prevent changes?	Unlock the OSD by pressing the MENU button for at least 10 seconds.

Check List

Symptom	Check List	Solutions
The image on the screen is shaking.	Check the monitor configuration to see if it is in Interlace Mode. (Interlace Mode: Vertical frequency 43Hz, 87Hz(i), etc)	The signal from the video card exceeds the maximum resolution and frequency of the monitor.
	Are there any magnetic products such as a power adapter, speaker or a high voltage wire near by?	Move the monitor away from anything that can create a strong magnetic field.
	Is the voltage stable?	The screen image can appear to shake or vibrate at a particular time of day due to low supply voltage.
	The screen image can also appear to shake or vibrate if there is a problem with the video card or the computer's main board.	
The screen shows strange colors or just black and white.	Is the screen displaying only one color as if looking at the screen through a cellophane paper?	Check the signal cable connection. Make sure the video card is fully inserted in it's slot.
	Have the screen colors become strange after running a program or due to a crash between applications?	Reboot the computer.
	Has the video card been set properly?	Set the video card by referring to the video card manual.
The screen suddenly has become unbalanced.	Have you changed the video card or the driver?	Adjust screen image position and size using the OSD.
	Have you adjusted the resolution or frequency to the monitor?	Adjust the resolution and frequency at the video card. (Refer to the Preset Display Modes).
	The screen can be unbalanced due to the cycle of the video card signals. Readjust Position by referring to the OSD.	

Check List

Symptom	Check List	Solutions
The screen is out of focus or OSD cannot be adjusted.	Have you adjusted the resolution or frequency on the monitor?	Adjust the resolution and frequency of the video card. (Refer to the Preset Display Modes).
The screen is partially distorted.	Are there any magnetic products such as an adapter, speaker or a high voltage wire near the monitor?	Enter the OSD and perform a "Degauss". Keep the monitor away from any magnetic products.
LED is blinking but no images on the screen.	Is the frequency properly adjusted when checking the Display Timing on the menu?	Adjust the frequency properly by referring to the video card manual and the Preset Display Modes. (The maximum frequency per resolution may differ from product to product.)
There are only 16 colors shown on the screen. The screen colors have changed after changing the video card.	Have the Windows colors been set properly?	For Windows XP/ 2000: Set the colors properly at the Control Panel, Display, Settings .
	Has the video card been set properly?	Set the video card by referring to the video card manual.

Check the following items if there is trouble with the monitor.

1. Check if the power cord and the cable are properly connected to the computer.
2. Check if the computer beeps more than 3 times when booting.
(If it does, request an after-service for the main board of the computer.)
3. If you installed a new video card or if you assembled the PC, check if the installed the adapter (video) driver and the monitor driver.
4. Check if the scanning ratio of the video screen is set at 75Hz or 85Hz.
(Do not exceed 60Hz when using the maximum resolution.)
5. If you have problems in installing the adapter (video) driver, boot the computer in Safe Mode, remove the Display Adapter at the "**Control Panel, System, Device Administrator**" and then reboot the computer to reinstall the adapter (video) driver.

Note: If problems repeatedly occur, [contact an authorized service center](#).

Q & A

Question	Answer
How can I change the frequency?	<p>Frequency can be changed by reconfiguring the video card.</p> <p>Note that video card support can vary, depending on the version of the driver used. (Refer to the computer or the video card manual for details.)</p>
How can I adjust the resolution?	<p>Windows XP/2000: Set the resolution at the Control Panel, Display, Settings.</p> <p>* Contact the video card manufacturer for details.</p>
How can I set the Power Saving function?	<p>Windows XP/2000: Set the function at BIOS-SETUP of the computer or the screen saver. (Refer to Windows/Computer Manual).</p>
The monitor makes a sound when it is turned on.	<p>This is normal as some sound may be generated when the metal case and the electromagnet, which are installed to block any electromagnetic waves, interact with each other.</p>
How can I clean the outer case/Picture tube?	<p>Disconnect the power cord and then clean the monitor with a soft cloth, using either a cleaning solution or plain water.</p> <p>Do not leave any remains of the detergent nor scratch the case. Do not allow any water to go inside the monitor.</p>

Self-Test Feature Check

SyncMaster 591S/793S/793DF/795DF/797DF/793MB/795MB

Your monitor provides a self test feature that allows you to check whether your monitor is functioning properly.

Self-Test Feature Check

1. Turn off both your computer and the monitor.
2. Unplug the video cable from the back of the computer.
3. Turn on the monitor.

If your monitor works normally, the following screen appears.



SyncMaster 591S/793DF/795DF



SyncMaster 997DF

Failure of any of the boxes to appear indicates a problem with your monitor. This box also appears during normal operation if the video cable becomes disconnected or damaged.

4. Turn off your monitor and reconnect the video cable; then turn on both your computer and the monitor.

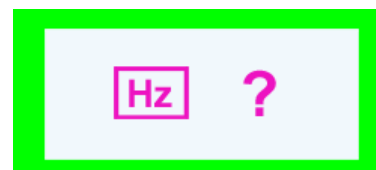
If your monitor screen remains blank after using the previous procedure, check your video controller and computer system; your monitor is functioning properly.

Warning Messages

If there is something wrong with the input signal, a message appears on the screen or the screen goes blank although the power indicator LED is still on. The message may indicate that the monitor is out of scan range or that you need to check the signal cable.



SyncMaster 591S/793DF/795DF



SyncMaster 997DF

Environment

The location and the position of the monitor may influence the quality and other features of the monitor.

1. If there are any woofer speakers near the monitor, unplug and relocate the woofer to another room.
2. Remove all electronic devices such as radios, fans, clocks and telephones that are within 3 feet (one meter) of the monitor.
3. Run the despeckling function again after moving your device.

Self-Test Feature Check

Useful Tips

- A monitor recreates visual signals received from the PC. Therefore, if there is trouble with the PC or the video card, this can cause the monitor to become blank, have poor coloring, noise, Sync. Out of Range, etc. In this case, first check the source of the problem, and then contact a service center or your dealer.
- **Judging the monitor's working condition**
If there is no image on the screen or an "Sync. Out of Range" message comes up, disconnect the cable from the computer while the monitor is still powered on.
 - If there is a message coming up on the screen or if the screen goes white, this means the monitor is in working condition.
 - In this case, check the computer for trouble.



Specifications

- ▶ **General**
- ▶ PowerSaver
- ▶ Preset Timing Modes

General	
Model Name	SyncMaster 797DF
Picture Tube	
Type	17"(43cm) DynaFlat (40.6cm viewable)
Deflection angle	90 °
Dot Pitch	0.20mm (Horizontal)
Screen type	Aluminized tri-color phosphor dot trio with black matrix. Anti-doming invar shadow mask. Multi-layer coated with anti-static.
Maximum Resolution	
1600 x 1200@76Hz	
Active Display	
Horizontal	312 ± 4 mm
Vertical	234 ± 4 mm
Synchronization	
Horizontal	30 ~ 96 kHz
Vertical	50 ~ 160 Hz
Input Signal Definition	
Video Signal	RGB, Analog 0.7 Vpp positive at 75 ohms
Sync Signal	Separate H/V sync, TTL level, positive or negative
Display Color	
Unlimited	
Maximum Pixel Clock	
250 MHz	
Power Supply	
90 ~ 264VAC rms, 60/50 Hz ± 3Hz	
Power Consumption	
Less than 90W	
Dimensions (WxDxH)	
401 x 410 x 378mm (After installation of Stand)	
Weight	
14.3kg	
Environmental considerations	
Operating Temperature 32°F ~ 104°F(0°C ~ 40°C) Humidity 10% ~ 80%, non-condensing Storage Temperature -4°F ~113°F (-20°C ~ 45°C) Humidity 5% ~ 95%, non-condensing	
Plug and Play Capability	
This monitor can be installed on any Plug & Play compatible system. Interaction of the monitor and computer systems will provide the best operating conditions and monitor settings. In most cases, monitor installation will proceed automatically, unless the user wishes to select alternate settings.	

Note: Design and specifications are subject to change without prior notice.



Specifications

- ▶ General
- ▶ **PowerSaver**
- ▶ Preset Timing Modes

This monitor has a built-in power management system called PowerSaver. This system saves energy by switching your monitor into a low-power mode when it has not been used for a certain amount of time. The monitor automatically returns to normal operation when you move the computer's mouse or press a key on the keyboard. For energy conservation, turn your monitor OFF when it is not needed, or when leaving it unattended for long periods. The PowerSaver system operates with a VESA DPMS compliant video card installed in your computer. Use a software utility installed on your computer to set up this feature.

State	Normal Operation	Power-off Mode EPA/ENERGY 2000
Power Indicator	Green	Green, Blinking
Power Consumption	Less than 90W	Less than 2.0W



This monitor is EPA ENERGY STAR[®] compliant and ENERGY2000 compliant when used with a computer equipped with VESA DPMS functionality.

As an ENERGY STAR[®] Partner, SAMSUNG has determined that this product meets the ENERGY STAR[®] guidelines for energy efficiency.



Specifications

- ▶ General
- ▶ PowerSaver
- ▶ **Preset Timing Modes**

If the signal transferred from the computer is the same as the following Preset Timing Modes, the screen will be adjusted automatically. However, if the signal differs, the screen may go blank while the power LED is on. Refer to the video card manual and adjust the screen as follows.

Table 1. Preset Timing Modes

Display Mode	Horizontal Frequency (kHz)	Vertical Frequency (Hz)	Pixel Clock (MHz)	Sync Polarity (H/V)
VESA, 640 x 480	37.500	75.000	31.500	-/-
VESA, 1024 x 768	68.677	84.997	94.500	+/+
VESA, 1280 x 1024	91.146	85.024	157.50	+/+



Horizontal Frequency

The time to scan one line connecting the right edge to the left edge of the screen horizontally is called Horizontal Cycle and the inverse number of the Horizontal Cycle is called Horizontal Frequency. Unit: kHz

Vertical Frequency

Like a fluorescent lamp, the screen has to repeat the same image many times per second to display an image to the user. The frequency of this repetition is called Vertical Frequency or Refresh Rate. Unit: Hz



Specifications

- ▶ **General**
- ▶ PowerSaver
- ▶ Preset Timing Modes

General	
Model Name	SyncMaster 795DF/795MB
Picture Tube	
Type	17"(43cm) DynaFlat (40.6cm viewable)
Deflection angle	90 °
Dot Pitch	0.20mm (Horizontal)
Screen type	Aluminized tri-color phosphor dot trio with black matrix. Anti-doming invar shadow mask. Multi-layer coated with anti-static.
Maximum Resolution	
1600 x 1200 (NI)	
Active Display	
Horizontal	312 ± 4 mm
Vertical	234 ± 4 mm
Synchronization	
Horizontal	30 ~ 85 kHz
Vertical	50 ~ 160 Hz
Input Signal Definition	
Video Signal	RGB, Analog 0.7 Vpp positive at 75 ohms
Sync Signal	Separate H/V sync, TTL level, positive or negative
Display Color	
Unlimited	
Maximum Pixel Clock	
185 MHz	
Power Supply	
90 ~ 264VAC rms, 60/50 Hz ± 3Hz	
Power Consumption	
Less than 90W	
Dimensions (WxDxH)	
401 x 410 x 378mm (After installation of Stand)	
Weight	
14.3kg	
Environmental considerations	
Operating Temperature 32°F ~ 104°F(0°C ~ 40°C) Humidity 10% ~ 80%, non-condensing Storage Temperature -4°F ~113°F (-20°C ~ 45°C) Humidity 5% ~ 95%, non-condensing	
Plug and Play Capability	
This monitor can be installed on any Plug & Play compatible system. Interaction of the monitor and computer systems will provide the best operating conditions and monitor settings. In most cases, monitor installation will proceed automatically, unless the user wishes to select alternate settings.	

Note: Design and specifications are subject to change without prior notice.



Specifications

- ▶ General
- ▶ **PowerSaver**
- ▶ Preset Timing Modes

This monitor has a built-in power management system called PowerSaver. This system saves energy by switching your monitor into a low-power mode when it has not been used for a certain amount of time. The monitor automatically returns to normal operation when you move the computer's mouse or press a key on the keyboard. For energy conservation, turn your monitor OFF when it is not needed, or when leaving it unattended for long periods. The PowerSaver system operates with a VESA DPMS compliant video card installed in your computer. Use a software utility installed on your computer to set up this feature.

State	Normal Operation	Power-off Mode EPA/ENERGY 2000
Power Indicator	Green	Green, Blinking
Power Consumption	Less than 90W	Less than 2.0W



This monitor is EPA ENERGY STAR[®] compliant and ENERGY2000 compliant when used with a computer equipped with VESA DPMS functionality.

As an ENERGY STAR[®] Partner, SAMSUNG has determined that this product meets the ENERGY STAR[®] guidelines for energy efficiency.



- ▶ General
- ▶ PowerSaver
- ▶ **Preset Timing Modes**

If the signal transferred from the computer is the same as the following Preset Timing Modes, the screen will be adjusted automatically. However, if the signal differs, the screen may go blank while the power LED is on. Refer to the video card manual and adjust the screen as follows.

Table 1. Preset Timing Modes

Display Mode	Horizontal Frequency (kHz)	Vertical Frequency (Hz)	Pixel Clock (MHz)	Sync Polarity (H/V)
VESA, 640 x 480	37.500	75.000	31.500	-/-
VESA, 1024 x 768	68.677	84.997	94.500	+/+
VESA, 1280 x 1024	79.976	75.025	135.00	+/+



Horizontal Frequency

The time to scan one line connecting the right edge to the left edge of the screen horizontally is called Horizontal Cycle and the inverse number of the Horizontal Cycle is called Horizontal Frequency. Unit: kHz

Vertical Frequency

Like a fluorescent lamp, the screen has to repeat the same image many times per second to display an image to the user. The frequency of this repetition is called Vertical Frequency or Refresh Rate. Unit: Hz



Specifications

- ▶ **General**
- ▶ PowerSaver
- ▶ Preset Timing Modes

General	
Model Name	SyncMaster 793S
Picture Tube	
Type	17"(43cm) Full square type (40.6cm viewable)
Deflection angle	90 °
Dot Pitch	0.23mm (Horizontal)
Screen type	Aluminized tri-color phosphor dot trio with black matrix. Anti-doming invar shadow mask. Multi-layer coated with anti-static.
Maximum Resolution	
1280 x 1024 (NI)	
Active Display	
Horizontal	312 ± 4 mm
Vertical	234 ± 4 mm
Synchronization	
Horizontal	30 ~ 70 kHz
Vertical	50 ~ 160 Hz
Input Signal Definition	
Video Signal	RGB, Analog 0.7 Vpp positive at 75 ohms
Sync Signal	Separate H/V sync, TTL level, positive or negative
Display Color	
Unlimited	
Maximum Pixel Clock	
110 MHz	
Power Supply	
90 ~ 264VAC rms, 60/50 Hz ± 3Hz	
Power Consumption	
Less than 90W	
Dimensions (WxDxH)	
401 x 410 x 378mm (After installation of Stand)	
Weight	
14.3kg	
Environmental considerations	
Operating Temperature 32°F ~ 104°F(0°C ~ 40°C) Humidity 10% ~ 80%, non-condensing Storage Temperature -4°F ~113°F (-20°C ~ 45°C) Humidity 5% ~ 95%, non-condensing	
Plug and Play Capability	
This monitor can be installed on any Plug & Play compatible system. Interaction of the monitor and computer systems will provide the best operating conditions and monitor settings. In most cases, monitor installation will proceed automatically, unless the user wishes to select alternate settings.	

Note: Design and specifications are subject to change without prior notice.



Specifications

- ▶ General
- ▶ **PowerSaver**
- ▶ Preset Timing Modes

This monitor has a built-in power management system called PowerSaver. This system saves energy by switching your monitor into a low-power mode when it has not been used for a certain amount of time. The monitor automatically returns to normal operation when you move the computer's mouse or press a key on the keyboard. For energy conservation, turn your monitor OFF when it is not needed, or when leaving it unattended for long periods. The PowerSaver system operates with a VESA DPMS compliant video card installed in your computer. Use a software utility installed on your computer to set up this feature.

State	Normal Operation	Power-off Mode EPA/ENERGY 2000
Power Indicator	Green	Green, Blinking
Power Consumption	Less than 90W	Less than 2W



This monitor is EPA ENERGY STAR[®] compliant and ENERGY2000 compliant when used with a computer equipped with VESA DPMS functionality.

As an ENERGY STAR[®] Partner, SAMSUNG has determined that this product meets the ENERGY STAR[®] guidelines for energy efficiency.



Specifications

- ▶ General
- ▶ PowerSaver
- ▶ **Preset Timing Modes**

If the signal transferred from the computer is the same as the following Preset Timing Modes, the screen will be adjusted automatically. However, if the signal differs, the screen may go blank while the power LED is on. Refer to the video card manual and adjust the screen as follows.

Table 1. Preset Timing Modes

Display Mode	Horizontal Frequency (kHz)	Vertical Frequency (Hz)	Pixel Clock (MHz)	Sync Polarity (H/V)
VESA, 640 x 480	37.500	75.000	31.500	-/-
VESA, 800 x 600	53.674	85.061	56.250	+/+
VESA, 1024 x 768	68.677	84.997	94.500	+/+



Horizontal Frequency

The time to scan one line connecting the right edge to the left edge of the screen horizontally is called Horizontal Cycle and the inverse number of the Horizontal Cycle is called Horizontal Frequency. Unit: kHz

Vertical Frequency

Like a fluorescent lamp, the screen has to repeat the same image many times per second to display an image to the user. The frequency of this repetition is called Vertical Frequency or Refresh Rate. Unit: Hz



Specifications

- ▶ **General**
- ▶ PowerSaver
- ▶ Preset Timing Modes

General	
Model Name	SyncMaster 793DF/793MB
Picture Tube	
Type	17"(43cm) DynaFlat (40.6cm viewable)
Deflection angle	90 °
Dot Pitch	0.20mm (Horizontal)
Screen type	Aluminized tri-color phosphor dot trio with black matrix. Anti-doming invar shadow mask. Multi-layer coated with anti-static.
Maximum Resolution	
1280 x 1024 (NI)	
Active Display	
Horizontal	312 ± 4 mm
Vertical	234 ± 4 mm
Synchronization	
Horizontal	30 ~ 70 kHz
Vertical	50 ~ 160 Hz
Input Signal Definition	
Video Signal	RGB, Analog 0.7 Vpp positive at 75 ohms
Sync Signal	Separate H/V sync, TTL level, positive or negative
Display Color	
Unlimited	
Maximum Pixel Clock	
110 MHz	
Power Supply	
90 ~ 264VAC rms, 60/50 Hz ± 3Hz	
Power Consumption	
Less than 90W	
Dimensions (WxDxH)	
401 x 410 x 378mm (After installation of Stand)	
Weight	
14.3kg	
Environmental considerations	
Operating Temperature 32°F ~ 104°F(0°C ~ 40°C) Humidity 10% ~ 80%, non-condensing Storage Temperature -4°F ~113°F (-20°C ~ 45°C) Humidity 5% ~ 95%, non-condensing	
Plug and Play Capability	
This monitor can be installed on any Plug & Play compatible system. Interaction of the monitor and computer systems will provide the best operating conditions and monitor settings. In most cases, monitor installation will proceed automatically, unless the user wishes to select alternate settings.	

Note: Design and specifications are subject to change without prior notice.



Specifications

- ▶ General
- ▶ **PowerSaver**
- ▶ Preset Timing Modes

This monitor has a built-in power management system called PowerSaver. This system saves energy by switching your monitor into a low-power mode when it has not been used for a certain amount of time. The monitor automatically returns to normal operation when you move the computer's mouse or press a key on the keyboard. For energy conservation, turn your monitor OFF when it is not needed, or when leaving it unattended for long periods. The PowerSaver system operates with a VESA DPMS compliant video card installed in your computer. Use a software utility installed on your computer to set up this feature.

State	Normal Operation	Power-off Mode EPA/ENERGY 2000
Power Indicator	Green	Green, Blinking
Power Consumption	Less than 90W	Less than 2.0W



This monitor is EPA ENERGY STAR[®] compliant and ENERGY2000 compliant when used with a computer equipped with VESA DPMS functionality.

As an ENERGY STAR[®] Partner, SAMSUNG has determined that this product meets the ENERGY STAR[®] guidelines for energy efficiency.



Specifications

- ▶ General
- ▶ PowerSaver
- ▶ **Preset Timing Modes**

If the signal transferred from the computer is the same as the following Preset Timing Modes, the screen will be adjusted automatically. However, if the signal differs, the screen may go blank while the power LED is on. Refer to the video card manual and adjust the screen as follows.

Table 1. Preset Timing Modes

Display Mode	Horizontal Frequency (kHz)	Vertical Frequency (Hz)	Pixel Clock (MHz)	Sync Polarity (H/V)
VESA, 640 x 480	37.500	75.000	31.500	-/-
VESA, 800 x 600	53.674	85.061	56.250	+/+
VESA, 1024 x 768	68.677	84.997	94.500	+/+



Horizontal Frequency

The time to scan one line connecting the right edge to the left edge of the screen horizontally is called Horizontal Cycle and the inverse number of the Horizontal Cycle is called Horizontal Frequency. Unit: kHz

Vertical Frequency

Like a fluorescent lamp, the screen has to repeat the same image many times per second to display an image to the user. The frequency of this repetition is called Vertical Frequency or Refresh Rate. Unit: Hz



Specifications

- ▶ **General**
- ▶ PowerSaver
- ▶ Preset Timing Modes

General	
Model Name	SyncMaster 591S
Picture Tube	
Type	15" (38cm) Full square type (35cm viewable)
Deflection angle	90 °
Dot Pitch	0.24mm (Horizontal)
Screen type	Aluminized tri-color phosphor dot trio with black matrix. Anti-doming invar shadow mask. Multi-layer coated with anti-static/Glare.
Maximum Resolution	
1024 x 768(NI)	
Active Display	
Horizontal	267 ± 4 mm
Vertical	200 ± 4 mm
Synchronization	
Horizontal	30 - 55 kHz
Vertical	50 ~ 120 Hz
Input Signal Definition	
Video Signal	RGB, Analog 0.7 Vpp positive at 75 ohms
Sync Signal	Separate H/V sync, TTL level, positive or negative
Display Color	
Unlimited	
Maximum Pixel Clock	
65 MHz	
Power Supply	
90 ~ 264VAC rms, 60/50 Hz ± 3Hz	
Power Consumption	
Less than 70W	
Dimensions (WxDxH)	
361 x 379.2 x 347 mm (After installation of Stand)	
Weight	
11.0 kg	
Environmental considerations	
Operating	Temperature 32°F ~ 104°F(0°C ~ 40°C) Humidity 10% ~ 80%, non-condensing
Storage	Temperature -4°F ~113°F (-20°C ~ 45°C) Humidity 5% ~ 95%, non-condensing
Plug and Play Capability	
This monitor can be installed on any Plug & Play compatible system. Interaction of the monitor and computer systems will provide the best operating conditions and monitor settings. In most cases, monitor installation will proceed automatically, unless the user wishes to select alternate settings.	

Note: Design and specifications are subject to change without prior notice.



Specifications

- ▶ General
- ▶ **PowerSaver**
- ▶ Preset Timing Modes

This monitor has a built-in power management system called PowerSaver. This system saves energy by switching your monitor into a low-power mode when it has not been used for a certain amount of time. The monitor automatically returns to normal operation when you move the computer's mouse or press a key on the keyboard. For energy conservation, turn your monitor OFF when it is not needed, or when leaving it unattended for long periods. The PowerSaver system operates with a VESA DPMS compliant video card installed in your computer. Use a software utility installed on your computer to set up this feature.

State	Normal Operation	Power-off Mode EPA/ENERGY 2000
Power Indicator	Green	Green, Blinking
Power Consumption	Less than 70W	Less than 2.0W



This monitor is EPA ENERGY STAR[®] compliant and ENERGY2000 compliant when used with a computer equipped with VESA DPMS functionality.

As an ENERGY STAR[®] Partner, SAMSUNG has determined that this product meets the ENERGY STAR[®] guidelines for energy efficiency.



Specifications

- ▶ General
- ▶ PowerSaver
- ▶ **Preset Timing Modes**

If the signal transferred from the computer is the same as the following Preset Timing Modes, the screen will be adjusted automatically. However, if the signal differs, the screen may go blank while the power LED is on. Refer to the video card manual and adjust the screen as follows.

Table 1. Preset Timing Modes

Display Mode	Horizontal Frequency (kHz)	Vertical Frequency (Hz)	Pixel Clock (MHz)	Sync Polarity (H/V)
VESA, 640 x 480	37.500	85.008	36.000	-/-
VESA, 640 x 480	43.269	75.000	31.500	-/-
VESA, 800 x 600	53.674	85.061	56.250	+/+



Horizontal Frequency

The time to scan one line connecting the right edge to the left edge of the screen horizontally is called Horizontal Cycle and the inverse number of the Horizontal Cycle is called Horizontal Frequency. Unit: kHz

Vertical Frequency

Like a fluorescent lamp, the screen has to repeat the same image many times per second to display an image to the user. The frequency of this repetition is called Vertical Frequency or Refresh Rate. Unit: Hz



Specifications

- ▶ **General**
- ▶ PowerSaver
- ▶ Preset Timing Modes

General	
Model Name	SyncMaster 997DF
Picture Tube	
Type	19"(48cm) DynaFlat (45.8cm viewable)
Deflection angle	90 °
Dot Pitch	0.20mm (Horizontal)
Screen type	Aluminized tri-color phosphor dot trio with black matrix. Anti-doming invar shadow mask. Multi-layer coated with anti-static/Glare.
Maximum Resolution	
1600 X 1200@ 76Hz	
Active Display	
Horizontal	352 ± 3 mm
Vertical	264 ± 3 mm
Synchronization	
Horizontal	30 ~ 96 kHz
Vertical	50 ~ 160 Hz
Input Signal Definition	
Video Signal	RGB, Analog 0.7 Vpp positive at 75 ohms
Sync Signal	Separate H/V sync, TTL level, positive or negative
Display Color	
Unlimited	
Maximum Pixel Clock	
250 MHz	
Power Supply	
90 ~ 264VAC rms, 60/50 Hz ± 3Hz	
Power Consumption	
Less than 110W	
Dimensions (WxDxH)	
445 x 457,5 x 416mm (After installation of Stand)	
Weight	
18,2 kg	
Environmental considerations	
Operating Temperature 32°F ~ 104°F(0°C ~ 40°C) Humidity 10% ~ 80%, non-condensing Storage Temperature -4°F ~113°F (-20°C ~ 45°C) Humidity 5% ~ 95%, non-condensing	
Plug and Play Capability	
This monitor can be installed on any Plug & Play compatible system. Interaction of the monitor and computer systems will provide the best operating conditions and monitor settings. In most cases, monitor installation will proceed automatically, unless the user wishes to select alternate settings.	

Note: Design and specifications are subject to change without prior notice.



Specifications

- ▶ General
- ▶ **PowerSaver**
- ▶ Preset Timing Modes

This monitor has a built-in power management system called PowerSaver. This system saves energy by switching your monitor into a low-power mode when it has not been used for a certain amount of time. The monitor automatically returns to normal operation when you move the computer's mouse or press a key on the keyboard. For energy conservation, turn your monitor OFF when it is not needed, or when leaving it unattended for long periods. The PowerSaver system operates with a VESA DPMS compliant video card installed in your computer. Use a software utility installed on your computer to set up this feature.

State	Normal Operation	Power-off Mode EPA/ENERGY 2000
Power Indicator	Green	Green, Blinking
Power Consumption	Less than 110W	Less than 2W



This monitor is EPA ENERGY STAR[®] compliant and ENERGY2000 compliant when used with a computer equipped with VESA DPMS functionality.

As an ENERGY STAR[®] Partner, SAMSUNG has determined that this product meets the ENERGY STAR[®] guidelines for energy efficiency.



- ▶ General
- ▶ PowerSaver
- ▶ **Preset Timing Modes**

If the signal transferred from the computer is the same as the following Preset Timing Modes, the screen will be adjusted automatically. However, if the signal differs, the screen may go blank while the power LED is on. Refer to the video card manual and adjust the screen as follows.

Table 1. Preset Timing Modes

Display Mode	Horizontal Frequency (kHz)	Vertical Frequency (Hz)	Pixel Clock (MHz)	Sync Polarity (H/V)
VESA, 640 x 480	37.500	75.000	31.500	-/-
VESA, 1024 x 768	68.677	84.997	94.500	+/+
VESA, 1280 x 1024	91.146	85.024	157.50	+/+



Horizontal Frequency

The time to scan one line connecting the right edge to the left edge of the screen horizontally is called Horizontal Cycle and the inverse number of the Horizontal Cycle is called Horizontal Frequency. Unit: kHz

Vertical Frequency

Like a fluorescent lamp, the screen has to repeat the same image many times per second to display an image to the user. The frequency of this repetition is called Vertical Frequency or Refresh Rate. Unit: Hz

Service

■ AUSTRALIA :

Samsung Electronics Australia Pty Ltd.
Customer Response Centre
7 Parkview Drive, Homebush Bay NSW 2127
Tel : 1300 362 603
<http://www.samsung.com.au/>

■ BRAZIL :

Samsung Eletronica da Amazonia Ltda.
R. Prof. Manoelito de Ornellas, 303, Terro B
Chacara Sto. Antonio, CEP : 04719-040
Sao Paulo, SP
SAC : 0800 124 421
<http://www.samsung.com.br/>

■ CANADA :

Samsung Electronics Canada Inc.
Samsung Customer Care
7037 Financial Drive
Mississauga, Ontario
L5N 6R3
1-800-SAMSUNG (1-800-726-7864)
<http://www.samsung.ca/>

■ CHILE :

SONDA S.A.
Teatinos 550, Santiago Centro, Santiago, Chile
Fono: 56-2-5605000 Fax: 56-2-5605353
56-2-800200211
<http://www.sonda.com/>
<http://www.samsung.cl/>

■ COLOMBIA :

Samsung Electronics Colombia
Cra 9 No 99A-02 Of. 106
Bogota, Colombia
Tel.: 9-800-112-112
Fax: (571) 618 - 2068
<http://www.samsung-latin.com/>
e-mail : soporte@samsung-latin.com

■ ESPAÑA :

Samsung Electronics Comercial Iberica, S.A.
Ciencias, 55-65 (Poligono Pedrosa) 08908
Hospitalet de Llobregat (Barcelona)
Tel. : (93) 261 67 00
Fax. : (93) 261 67 50
<http://samsung.es/>

■ FRANCE :

SAMSUNG ELECTRONICS FRANCE Service
Paris Nord 2
66 rue des Vanesses
BP 50116 Villepinte
95950 Roissy CDG Cedex
Tel : 08 25 08 65 65
Fax : 01 48 63 06 38
<http://www.samsungservices.com/>

■ GERMANY :

TELEPLAN Rhein-Main GmbH
Feldstr. 16
64331 Weiterstadt
T. 06151/957-1306
F. 06151/957-1732
* EURO 0.12/Min
<http://www.samsung.de/>

■ HUNGARY :

Samsung Electronics Magyar Rt.
1039, Budapest, Lehel u. 15-17.
Tel: 36 1 453 1100
Fax: 36 1 453 1101
<http://www.samsung.hu/>

■ ITALY :

Samsung Electronics Italia S.p.a.
Via C. Donat Cattin, 5
20063 Cernusco s/Naviglio (MI)
Servizio Clienti: 199.153.153
<http://www.samsung-italia.com/>

■ MEXICO :

SAMSUNG ELECTRONICS MEXICO. S.A. DE C.V.
Saturno NO.44, Col. Nueva Industrial Vallejo
Gustavo A.Madero C.P.07700, Mexico D.F. Mexico
TEL. 52-55-5747-5100
Fax. 52-55-47 52 02
RFC: SEM950215S98
<http://www.samsung.com.mx/>

■ NETHERLANDS/BELGIUM/LUXEMBOURG :

Samsung Electronics Benelux B. V.
Fleminglaan 12 2289 CP Rijiswijk, NEDERLANDS
Service and informatielijn ;
Belgium :0800-95214, <http://www.samsung.be/>
Netherlands : 0800-2295214, <http://www.samsung.nl/>

■ PANAMA :

Samsung Electronics Latinoamerica(Z.L.) S.A.
Calle 50 Edificio Plaza Credicorp, Planta Baja
Panama
Tel. : (507) 210-1122, 210-1133
Tel : 800-3278(FAST)
<http://www.samsung-latin.com/>

■ PERU

Servicio Integral Samsung
Av.Argentina 1790 Lima1. Peru
Tel: 51-1-336-8686
Fax: 51-1-336-8551
<http://www.samsungperu.com/>

■ PORTUGAL :

SAMSUNG ELECTRONICA PORTUGUESA S.A.
Rua Mário Dioniso, Nº2 - 1º Dt. 2795-140 LINDA-A-VELHA
Tel. 214 148 114/100 Fax. 214 148 133/128
Free Line 800 220 120
<http://www.samsung.pt/>

■ SOUTH AFRICA :

Samsung Electronics,5 Libertas Road, Somerset Office Park,
Bryanston Ext 16. Po Box 70006, Bryanston,2021, South Africa
Tel : 0027-11-549-1621
Fax : 0027-11-549-1629
<http://www.samsung.co.za/>

■ SWEDEN/DENMARK/NORWAY/FINLAND :

Samsung Electronics AB
Box 713
S-194 27 UPPLANDS VÄSBY
SVERIGE
Besöksadress : Johanneslundsvägen 4
Samsung support Sverige: 020-46 46 46
Samsung support Danmark : 8088-4646
Samsung support Norge: 8001-1800
Samsung support Finland: 0800-118001
Tel +46 8 590 966 00
Fax +46 8 590 966 50
<http://www.samsung.se/>

■ THAILAND :

HAI SAMSUNG SERVICE CENTER
MPA COMPLEX BUILDING,1st-2nd Floor
175 SOI SUEKSA VIDHAYA SATHON SOI 12
SILOM ROAD ,SILOM,BANGRAK
BANGKOK 10500
TEL : 0-2635-2567
FAX : 0-2635-2556

Service

- **UKRAINE :**
SAMSUNG ELECTRONICS REPRESENTATIVE OFFICE IN UKRAINE
4 Glybochitska str.
Kiev, Ukraine
Tel. 8-044-4906878
Fax 8-044-4906887
Toll-free 8-800-502-0000
<http://www.samsung.com.ua/>
- **United Kingdom :**
Samsung Electronics (UK) Ltd.
Samsung House, 225 Hook Rise South
Surbiton, Surrey KT6 7LD
Tel. : (0208) 391 0168
Fax. : (0208) 397 9949
< European Service Center & National Service >
Stafford Park 12 Telford, Shropshire, TF3 3BJ
Tel. : (0870) 242 0303
Fax. : (01952) 292 033
<http://samsungservice.co.uk/>
- **U.S.A. :**
Samsung Electronics America
Service Division
400 Valley Road, Suite 201
Mount Arlington, NJ 07856
1-800-SAMSUNG (1-800-726-7864)
<http://samsungusa.com>

IMPORTADO POR: SAMSUNG ELECTRONICS MEXICO. S.A. DE C.V.
Saturno NO.44, Col. Nueva Industrial Vallejo
Gustavo A.Madero C.P.07700, Mexico D.F. Mexico
TEL. 52-55-5747-5100

EXPORTADO POR: Samsung Electronics CO.,LTD.
416, Mae tan-3dong, Yeongtong-gu,
Suwon City, Kyoungki-Do Korea

Terms

- **Dot Pitch**

The image on a monitor is composed of red, green and blue dots. The closer the dots, the higher the resolution. The distance between two dots of the same color is called the 'Dot Pitch'.
Unit: mm

- **Vertical Frequency**

The screen must be redrawn several times per second in order to create and display an image for the user. The frequency of this repetition per second is called Vertical Frequency or Refresh Rate. Unit: Hz

Example: If the same light repeats itself 60 times per second, this is regarded as 60 Hz. In this case, flickering of the screen can be detected. To avoid this problem, there is a Flicker-free Mode using a vertical frequency over 70 Hz.

- **Horizontal Frequency**

The time to scan one line connecting the right edge to the left edge of the screen horizontally is called Horizontal Cycle. The inverse number of the Horizontal Cycle is called Horizontal Frequency. Unit: kHz

- **Interlace and Non-Interlace Methods**

Showing the horizontal lines of the screen from the top to the bottom in order is called the Non-Interlace method while showing odd lines and then even lines in turn is called the Interlace method. The Non-Interlace method is used for the majority of monitors to ensure a clear image. The Interlace method is the same as that used in TVs.

- **Plug & Play**

This is a function that provides the best quality screen for the user by allowing the computer and the monitor to exchange information automatically. This monitor follows the international standard VESA DDC for the Plug & Play function.

- **Resolution**

The number of horizontal and vertical dots used to compose the screen image is called 'resolution'. This number shows the accuracy of the display. High resolution is good for performing multiple tasks as more image information can be shown on the screen.

Example: If the resolution is 1024 X 768, this means the screen is composed of 1024 horizontal dots (horizontal resolution) and 768 vertical lines (vertical resolution).

Natural Color

● Natural Color Software Program



One of the recent problems in using a computer is that the color of the images printed out by a printer or other images scanned by a scanner or a digital camera are not the same as those shown on the monitor.

The Natural Color S/W is the very solution for this problem. It is a color administration system developed by Samsung Electronics in association with Korea Electronics & Telecommunications Research Institute (ETRI). This system is available only for Samsung monitors and makes the color of the images on the monitor the same as the printed or scanned images.

For more information, refer to Help (F1) in the software program.

How to install the Natural Color software

Insert the CD included with the Samsung monitor into the CD-ROM Drive. Then, the initial screen of the program installation will be executed. Click Natural Color on the initial screen to install the Natural Color software. To install the program manually, insert the CD included with the Samsung monitor into the CD-ROM Drive, click the [Start] button of Windows and then select [Execute].

Enter `D:\color\eng\setup.exe` and then press the key.

(If the drive where the CD is inserted is not D:\, enter the applicable drive.)

How to delete the Natural Color software program

Select [Setting]/[Control Panel] on the [Start] menu and then double-click [Add/Delete a program].

Select Natural Color from the list and then click the [Add/Delete] button.

Authority

Information in this document is subject to change without notice.

© 2004 Samsung Electronics Co., Ltd. All rights reserved.

Reproduction in any manner whatsoever without the written permission of Samsung Electronics Co., Ltd. is strictly forbidden.

Samsung Electronics Co., Ltd. shall not be liable for errors contained herein or for incidental or consequential damages in connection with the furnishing, performance, or use of this material.

Samsung is the registered trademark of Samsung Electronics Co., Ltd.; *Microsoft*, *Windows* and *Windows NT* are registered trademarks of Microsoft Corporation; *VESA*, *DPMS* and *DDC* are registered trademarks of Video Electronics Standard Association; the *ENERGY STAR* name and logo are registered trademarks of the U.S. Environmental Protection Agency (EPA). As an ENERGY STAR Partner, Samsung Electronics Co., Ltd. has determined that this product meets the ENERGY STAR guidelines for energy efficiency. All other product names mentioned herein may be the trademarks or registered trademarks of their respective owners.